

V&V Reference Report

L2 ASCDS Version : 8.4.4

Observation 9253 - L2 Version 2
Chandra X-Ray Center

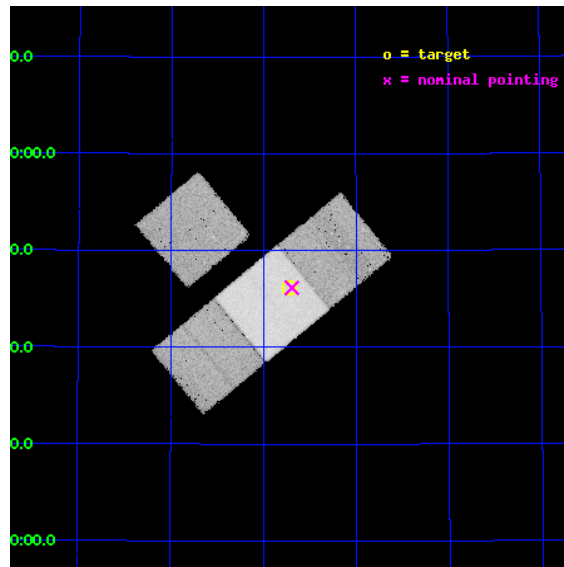
L2 Processing Date : May 9 2012

Contents

1	Front	2
2	OBI	3
2.1	OBI	3
2.1.1	Images	3
2.1.2	Bias	3
2.1.3	Parameters	4
2.1.4	Events	4
2.2	Compared Parameters	5
2.3	Aspect	6
2.4	Star Slots	9
2.4.1	Slot 3	9
2.4.2	Slot 4	10
2.4.3	Slot 5	11
2.4.4	Slot 6	12
2.4.5	Slot 7	13
2.5	FID Slots	14
2.5.1	Slot 0	14
2.5.2	Slot 1	15
2.5.3	Slot 2	16
A	Summary	17
A.1	Status	17
A.2	Comments	17

1 Front

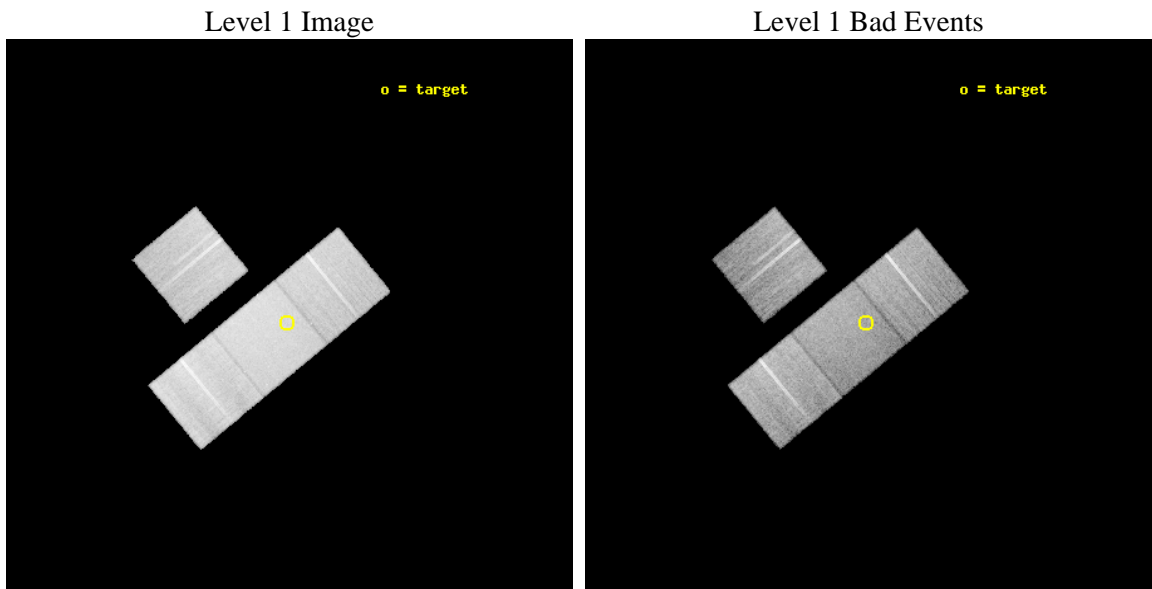
seq_num	701694	Sequence number
obs_id	9253	Observation id
title	Orientation effects in the X-ray and multi-wavelength properties of high-z, 3CRR quasars.	Proposal title
observer	Dr. Belinda Wilkes	Principal investigator
object	3CRR 266	Source name
dtcycle	0	
cycle	P	events from which exps? Prim/Second/Both
ra_targ	176.430833	Observer's specified target RA [deg]
dec_targ	49.768694	Observer's specified target Dec [deg]
ra_nom	176.42338968925	Nominal RA [deg]
dec_nom	49.769344971647	Nominal Dec [deg]
roll_nom	140.49162339387	Nominal Roll [deg]
revision	2	Processing version of data
ontime	18476.000142097	Sum of GTIs [s]
livetime	18234.597598408	Livetime [s]
ontime3	18476.000142097	Sum of GTIs [s]
ontime6	18476.000142097	Sum of GTIs [s]
ontime7	18476.000142097	Sum of GTIs [s]
ontime8	18476.000142097	Sum of GTIs [s]
l2events	176813	Number of level 2 events



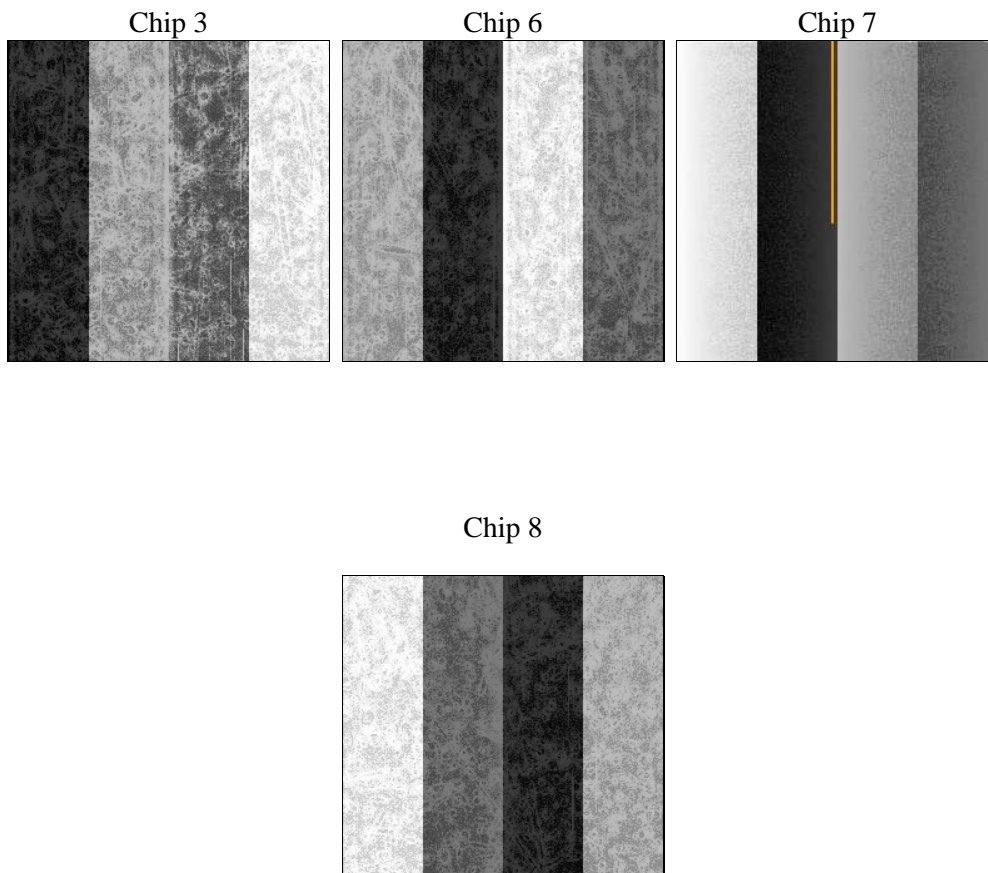
2 OBI

2.1 OBI

2.1.1 Images



2.1.2 Bias



2.1.3 Parameters

obi_num	1	Obi number	sched_exp_time	18433.428000	[s] Scheduled observation exposure time
ascdsver	8.4.4	Processing system revision	ontime	18476.000142097	Sum of GTIs [s]
caldbver	4.4.9	 	ontime3	18476.000142097	Sum of GTIs [s]
date	2012-05-09T21:19:06	Date and time of file creation	ontime6	18476.000142097	Sum of GTIs [s]
revision	2	Processing version of data	ontime7	18476.000142097	Sum of GTIs [s]
			ontime8	18476.000142097	Sum of GTIs [s]
			l1events	845707	Number of level 1 events

2.1.4 Events

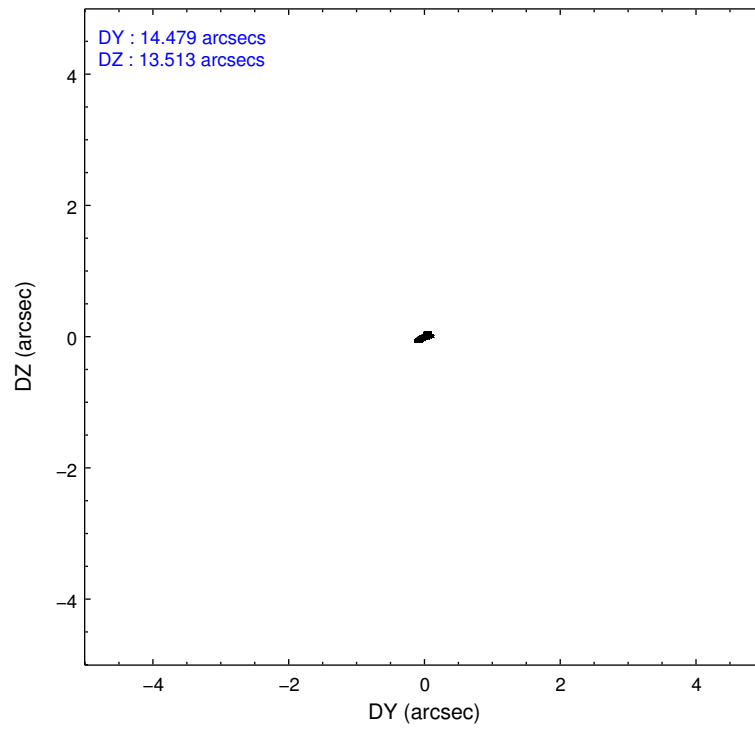
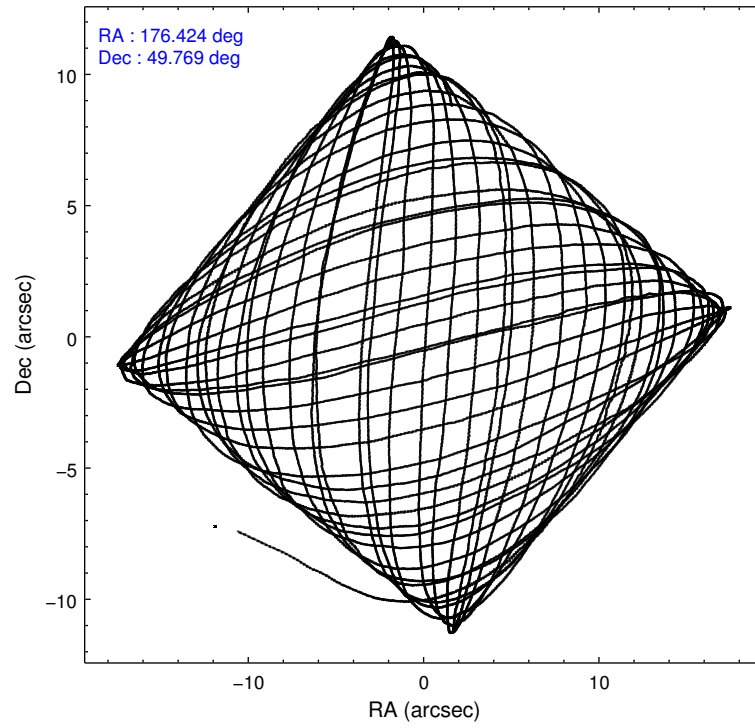
	ccd 3	ccd 6	ccd 7	ccd 8
level 1 events	174210	187386	250560	233551
rejected events	149367	160940	143425	178916
rejected %	85%	85%	57%	76%

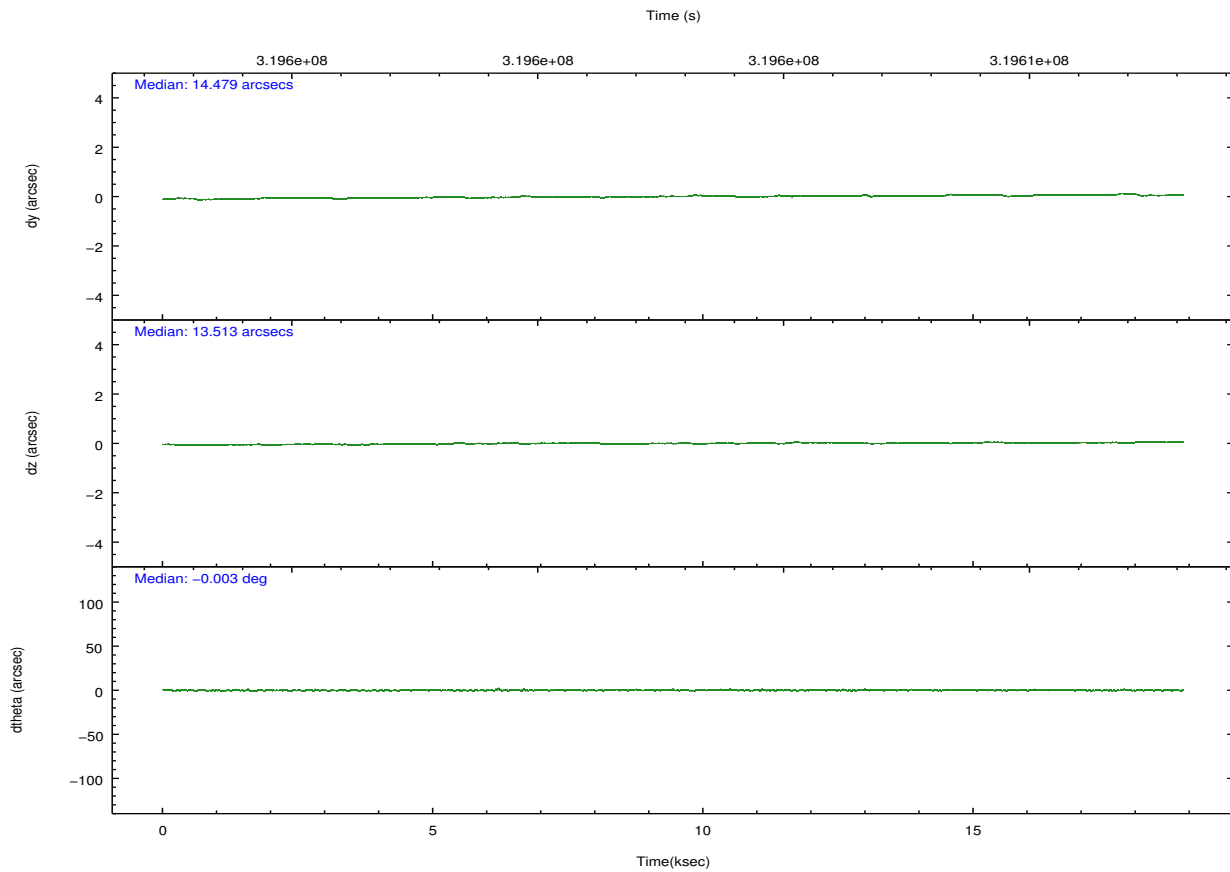
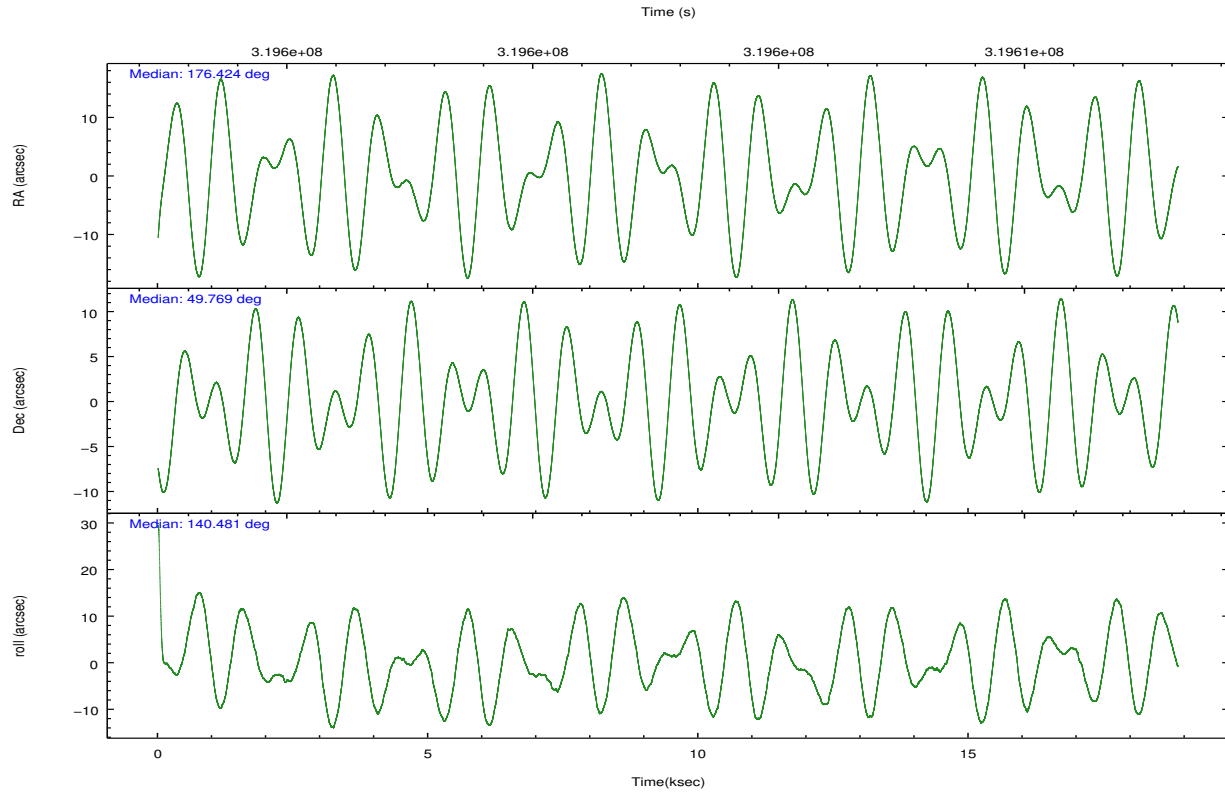
	ccd 3	ccd 6	ccd 7	ccd 8
grade 0 events	11733	11303	9555	18422
	6%	6%	3%	7%
grade 1 events	133	114	247	187
	0%	0%	0%	0%
grade 2 events	4720	5735	21744	11962
	2%	3%	8%	5%
grade 3 events	2173	2159	8910	5402
	1%	1%	3%	2%
grade 4 events	2208	2246	9029	5091
	1%	1%	3%	2%
grade 5 events	8307	8649	22957	11332
	4%	4%	9%	4%
grade 6 events	4015	5009	57928	13761
	2%	2%	23%	5%
grade 7 events	140921	152171	120190	167394
	80%	81%	47%	71%

2.2 Compared Parameters

Parameter	Planned	Actual	Parameter	Planned	Actual
Instrument	ACIS	ACIS	Obspar format version number	7	7
Detector	ACIS-3678	ACIS-3678	Obspar file type	PREDICTED	ACTUAL
Grating	NONE	NONE	Obspar update status	NONE	UPDATED
Data mode	FAINT	FAINT	CCD I0 on	N	N
Observation mode	POINTING	POINTING	CCD I1 on	N	N
[deg] Pointing RA	176.465237	176.4233896892455	CCD I2 on	N	N
[deg] Pointing Dec	49.765189	49.76934497164703	CCD I3 on	O1	Y
[deg] Pointing Roll	140.303030	140.4916233938739	CCD S0 on	N	N
[mm] SIM focus pos	-0.684267	-0.6828225247311905	CCD S1 on	N	N
[mm] SIM defocus	0	0.001444936568705701	CCD S2 on	O3	Y
[mm] SIM translation stage pos	-190.132523	-190.1425803651734	CCD S3 on	Y	Y
[mm] SIM translation stage offset	0	0.01005778216563158	CCD S4 on	O2	Y
[s] Observation start time (MET)	319593763.184000	319592767.39974	CCD S5 on	N	N
Observation start date	2008-02-17T00:01:38	2008-02-16T23:46:07	Number of optional ACIS chips dropped	0	0
[s] Observation end time (MET)	319612196.184000	319612421.26319	On-chip summing requested	N	N
Observation end date	2008-02-17T05:08:51	2008-02-17T05:13:41	Subarray requested	NONE	NONE
Read mode	TIMED	TIMED	Alternating exposures requested	N	N
			[s] Primary exposure time	0.000000	3.1

2.3 Aspect



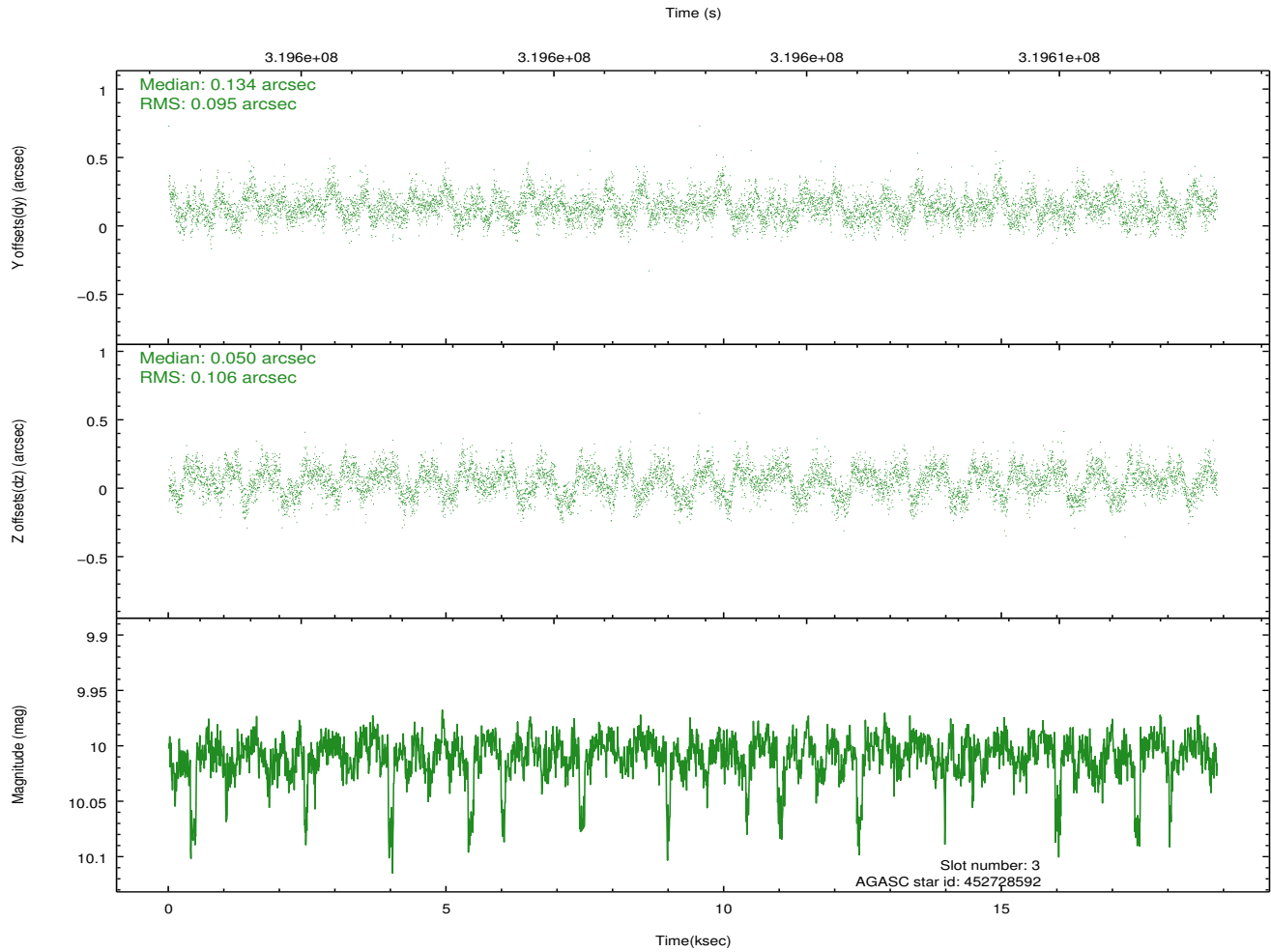
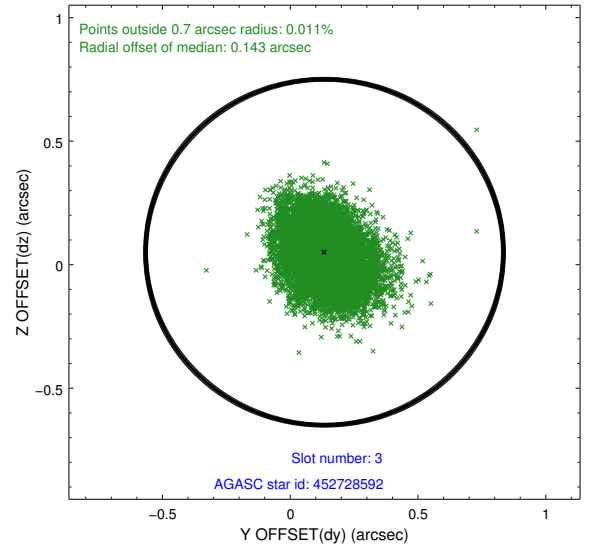
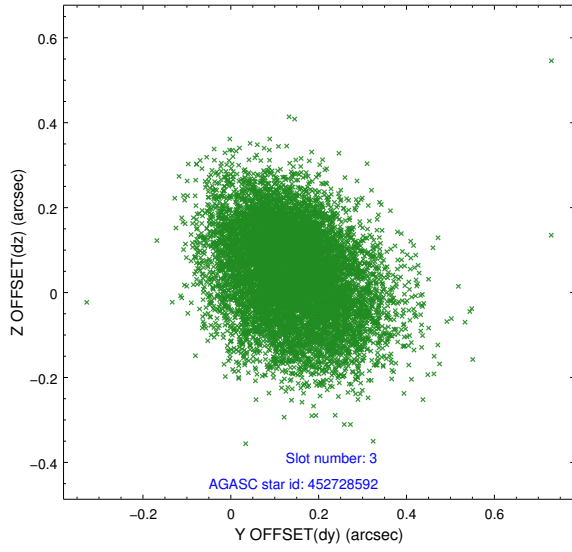


Slot Statistics

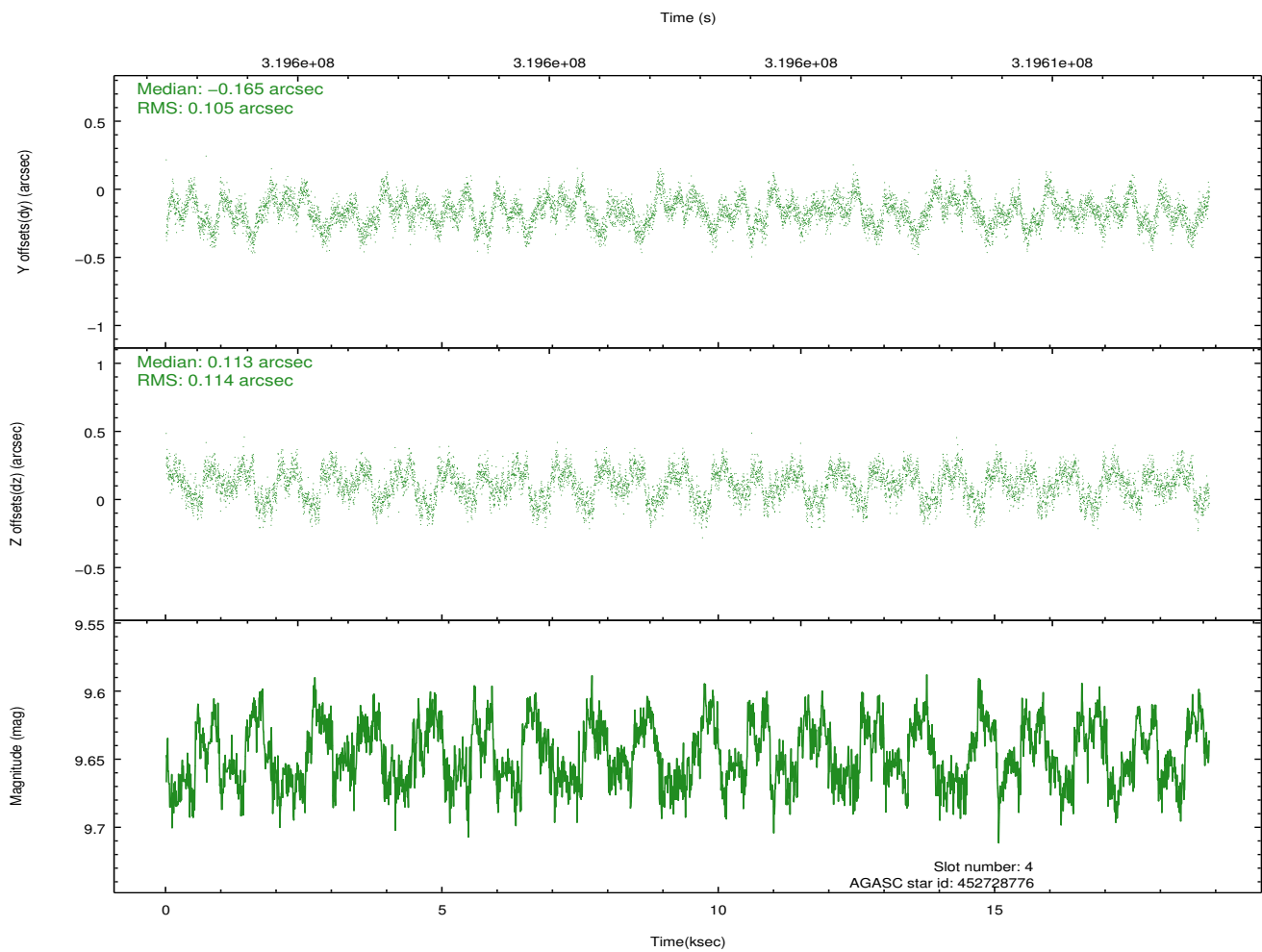
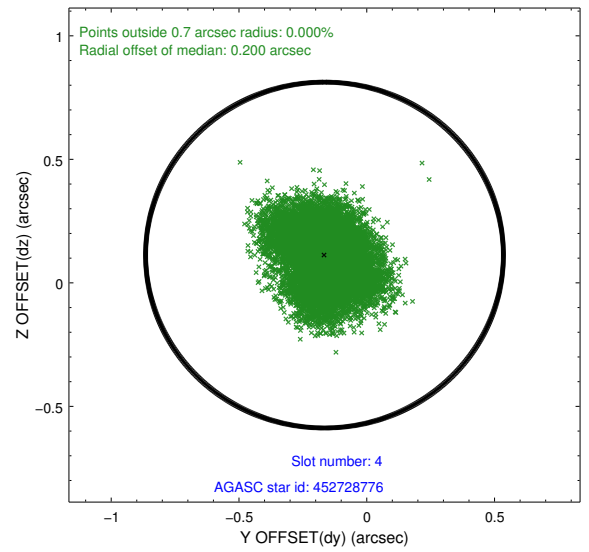
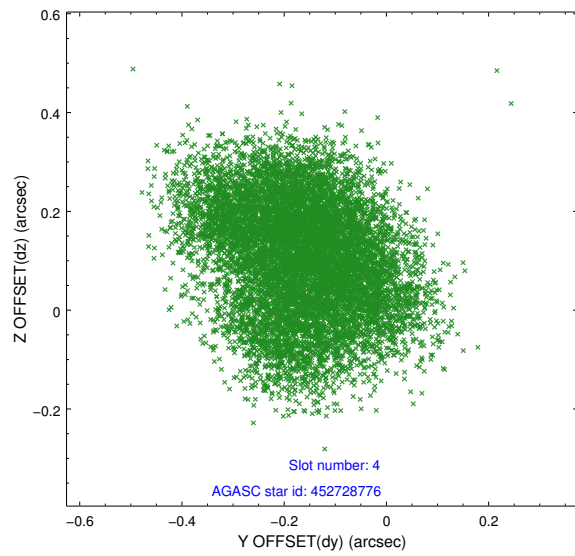
slot	status	id	mag	n_pts	med_dy	med_dz	dr1	dr2	ra	dec	mean_y	mean_z
0	FID	ACIS-S-2	7.10	4603	-0.064	-0.068	0.007	0.012	0.000000	0.000000	-767.51	-1734.86
1	FID	ACIS-S-4	7.19	4603	0.191	0.049	0.006	0.012	0.000000	0.000000	2145.94	173.50
2	FID	ACIS-S-5	7.23	4603	-0.158	0.028	0.007	0.011	0.000000	0.000000	-1820.16	167.43
3	GUIDE	452728592	10.01	9190	0.134	0.050	0.152	0.244	176.825883	49.137809	-2094.67	1193.95
4	GUIDE	452728776	9.65	9184	-0.165	0.113	0.170	0.256	176.447311	49.864240	259.94	-247.05
5	GUIDE	452729448	9.92	9192	0.020	-0.020	0.154	0.251	176.866360	49.208100	-2005.25	939.99
6	GUIDE	452731824	9.45	9182	-0.112	-0.276	0.127	0.212	176.163449	49.903259	856.92	63.70
7	GUIDE	452736584	8.01	9205	0.119	0.133	0.145	0.203	176.535690	50.563566	1712.88	-2313.65

2.4 Star Slots

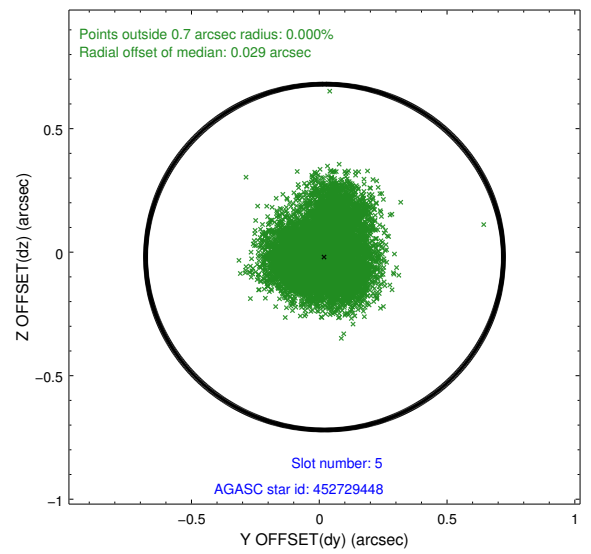
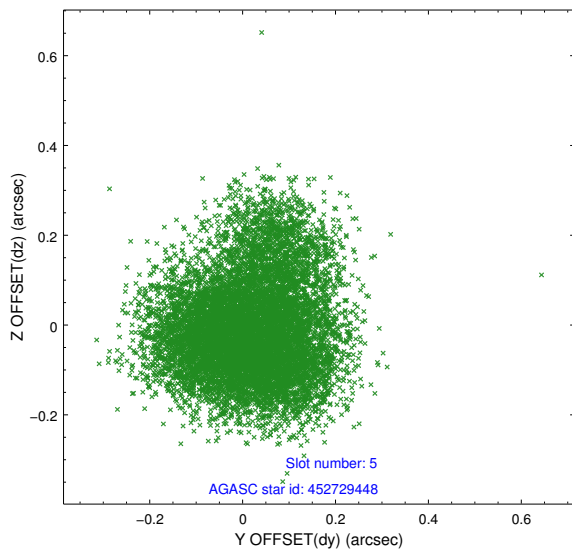
2.4.1 Slot 3



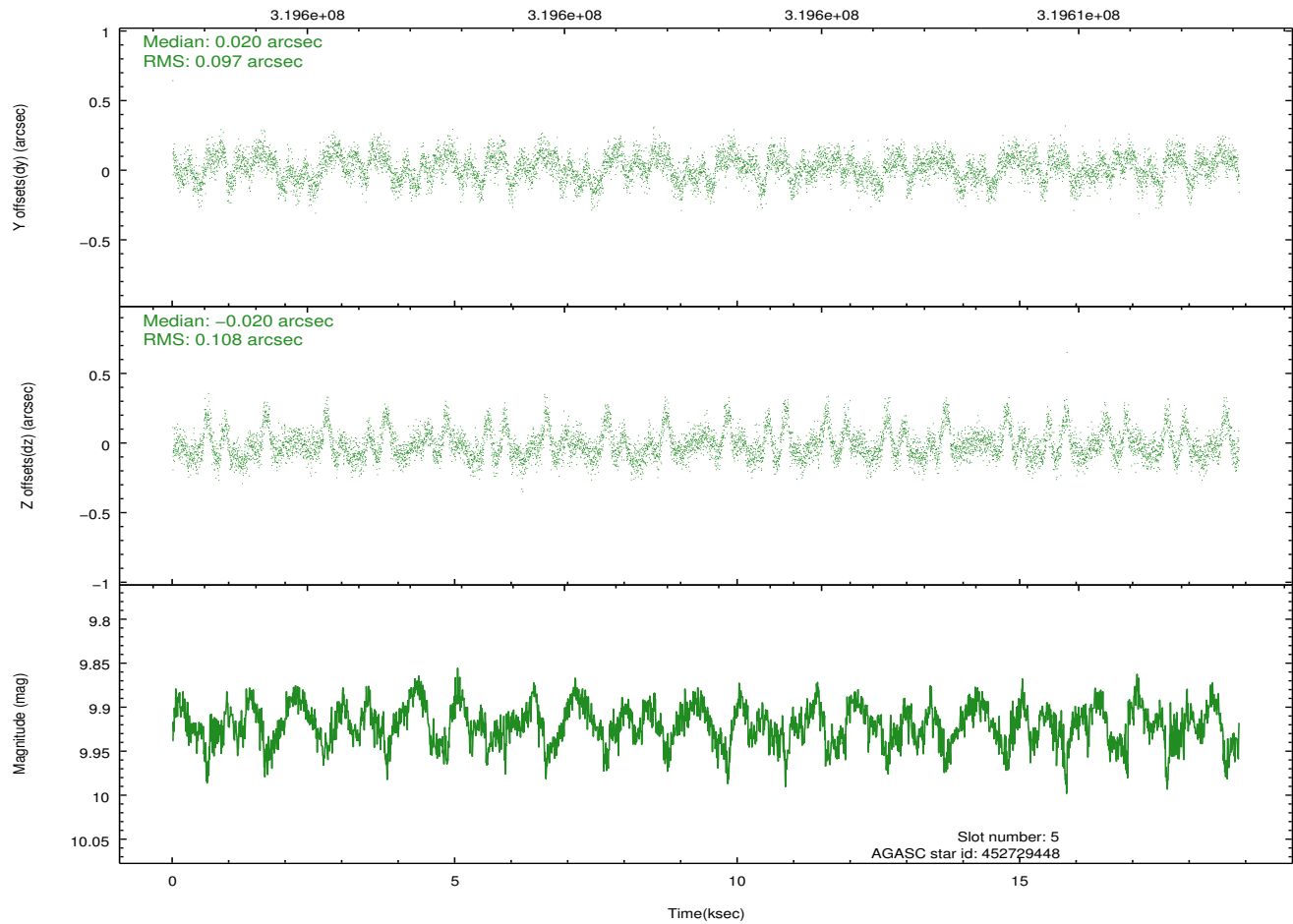
2.4.2 Slot 4



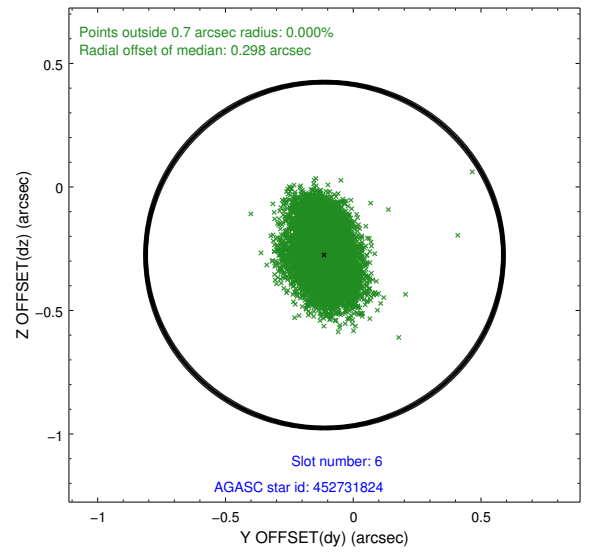
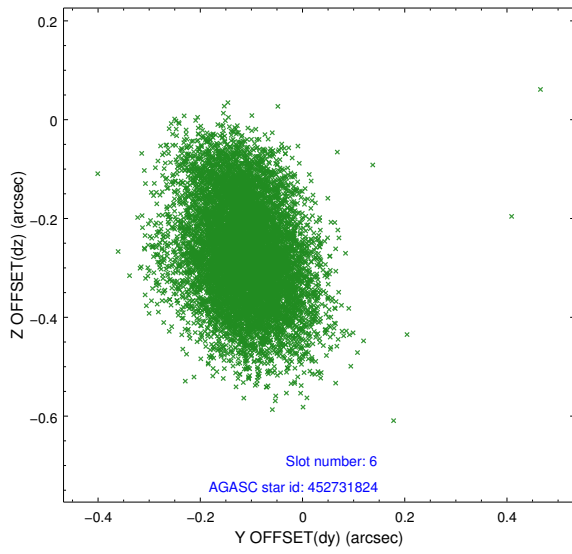
2.4.3 Slot 5



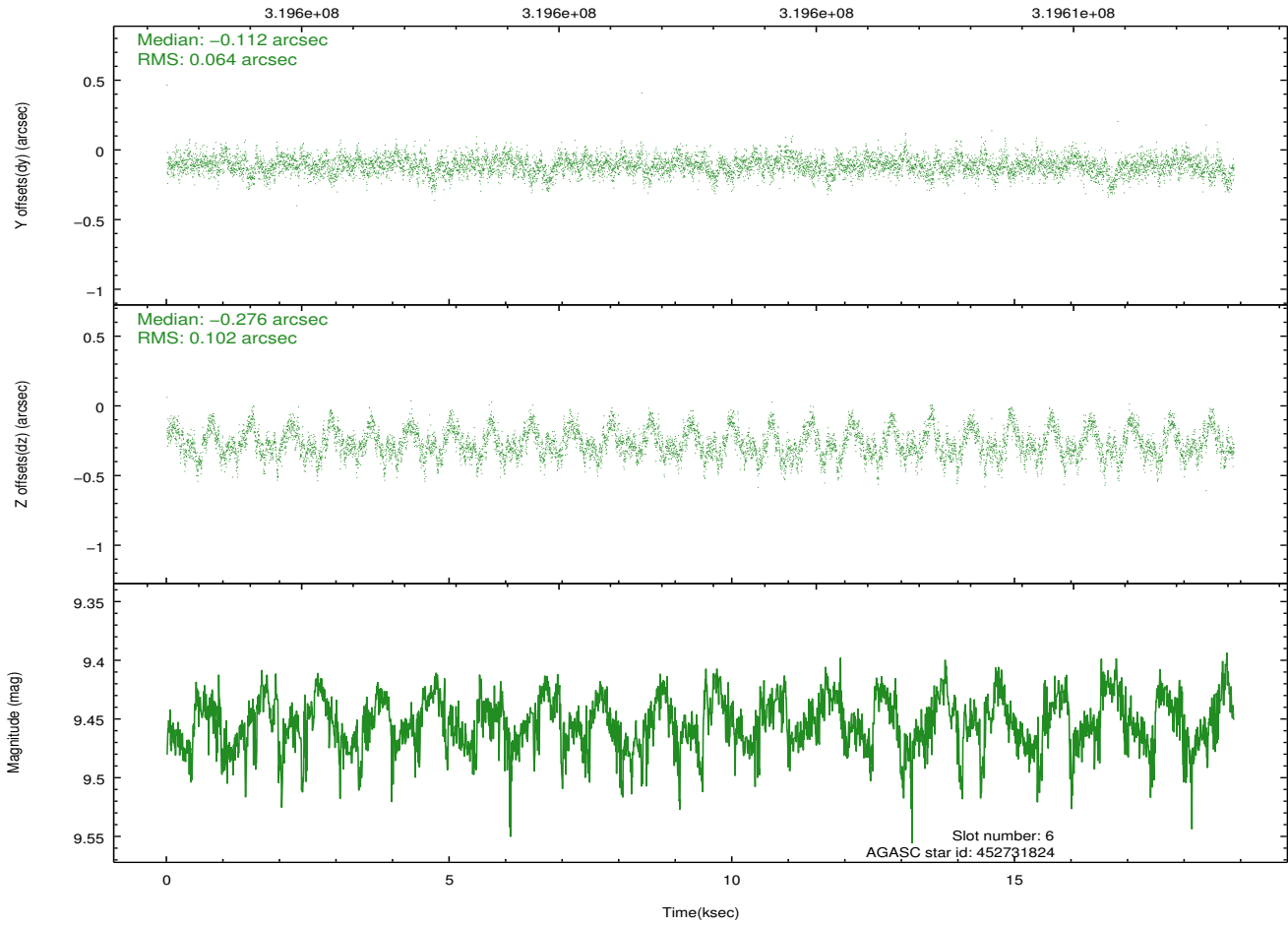
Time (s)



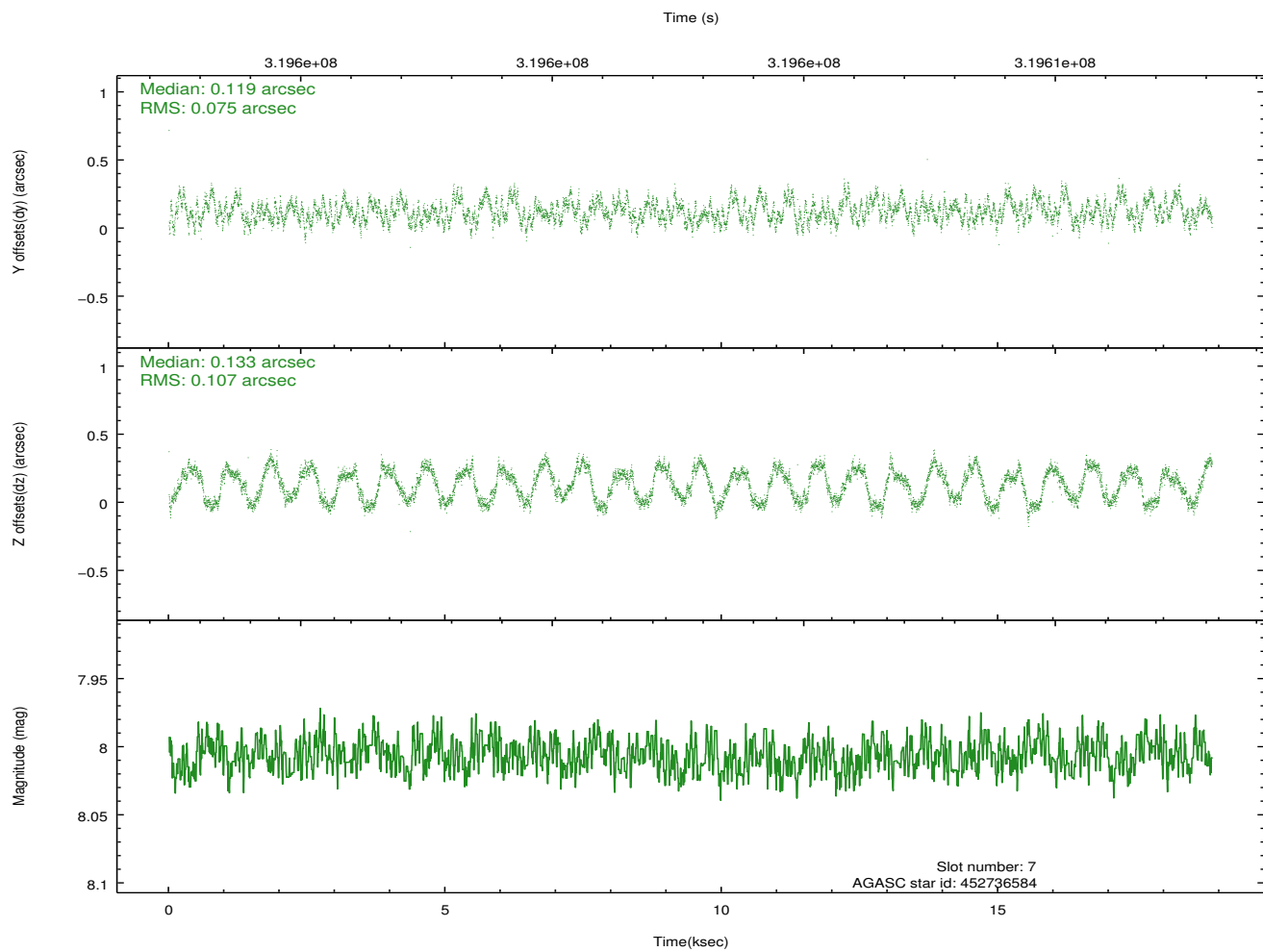
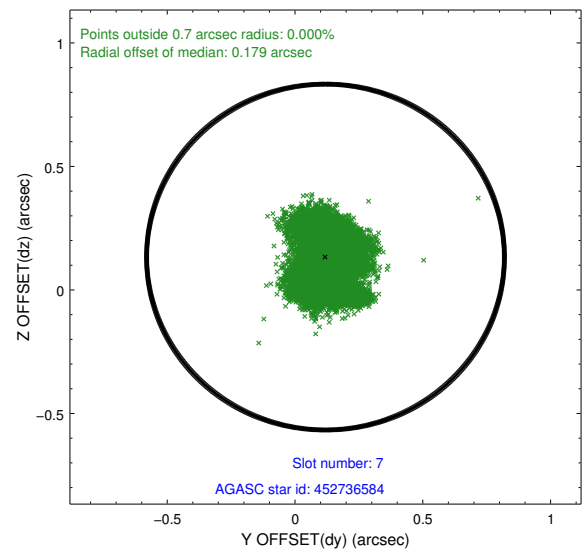
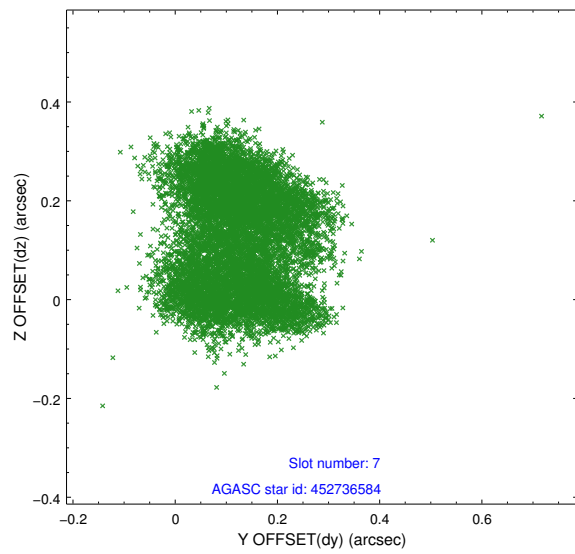
2.4.4 Slot 6



Time (s)

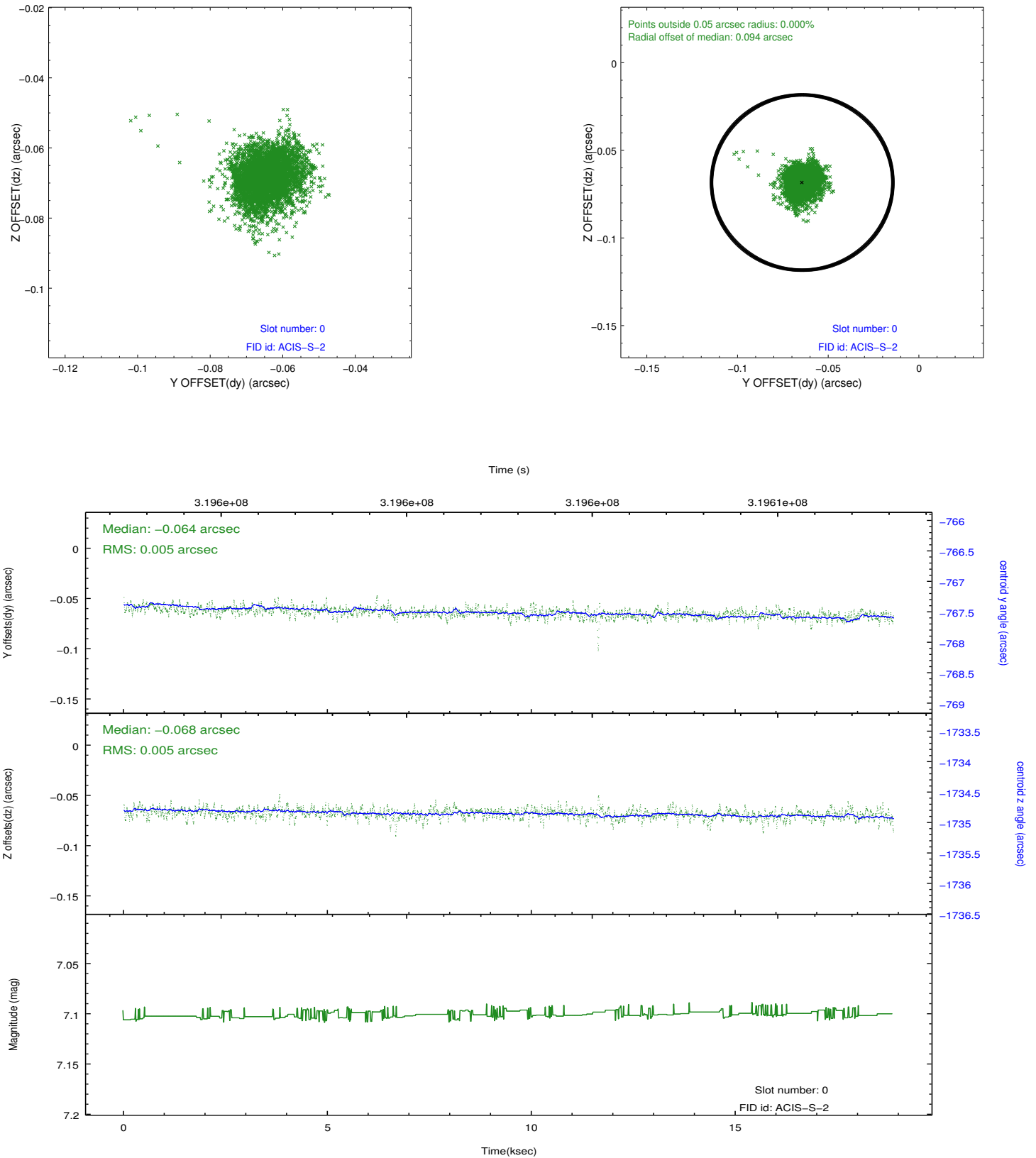


2.4.5 Slot 7

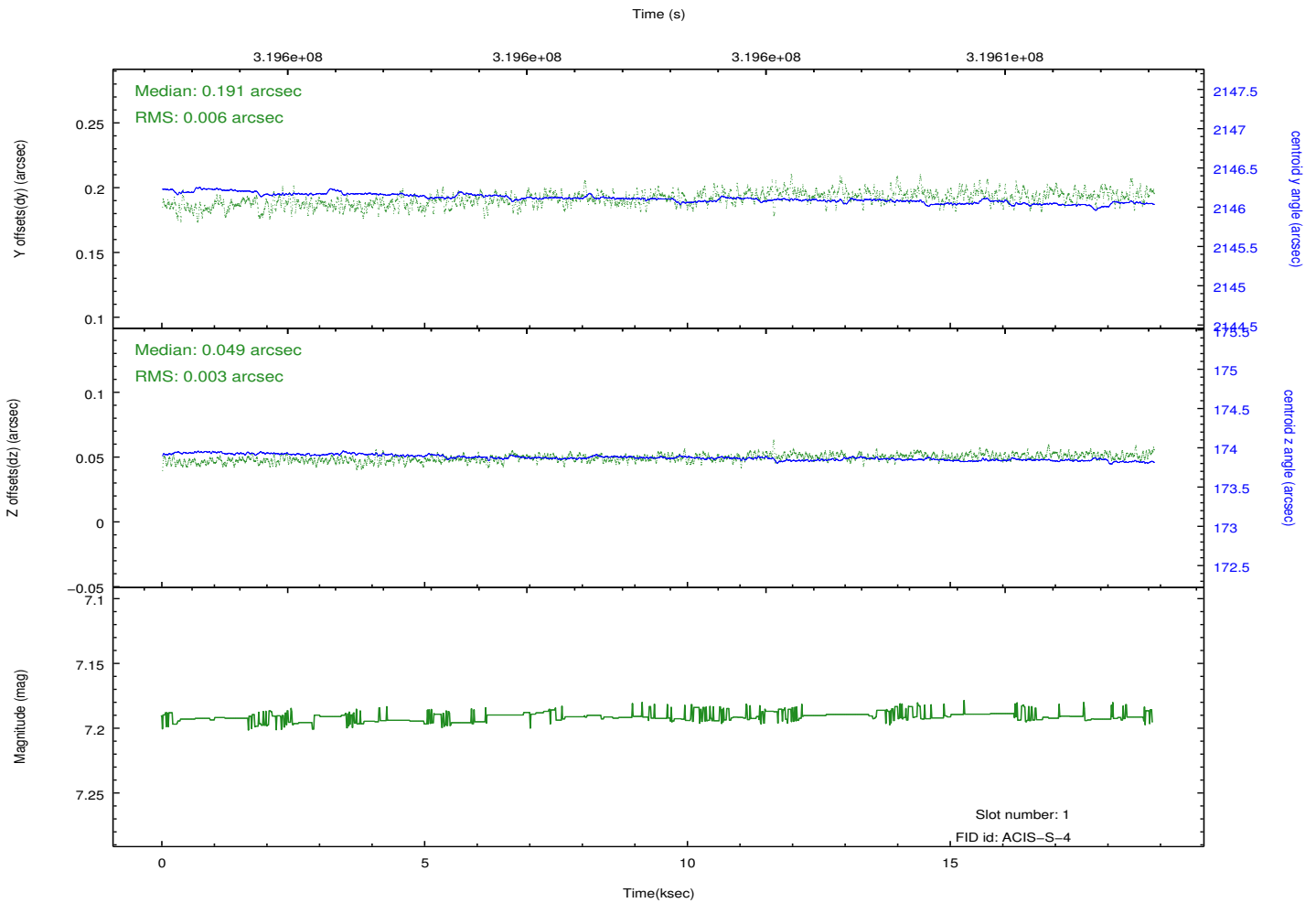
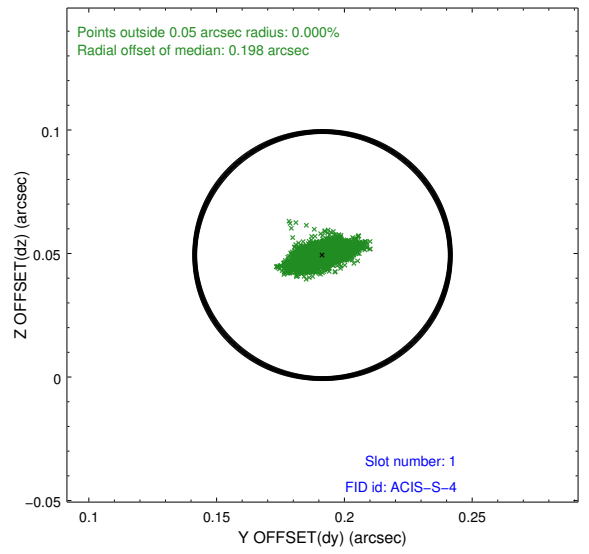
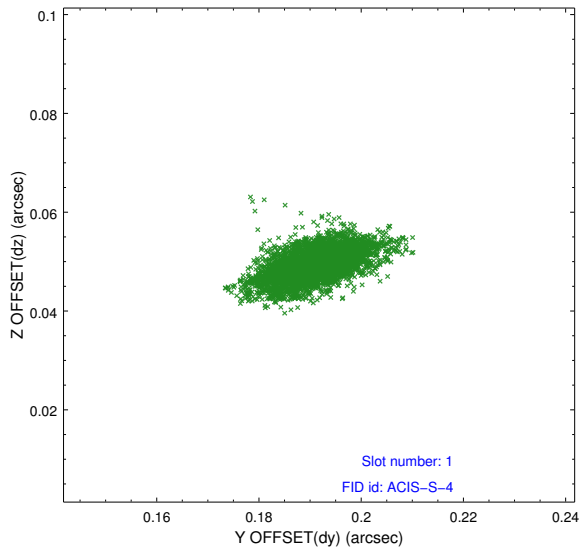


2.5 FID Slots

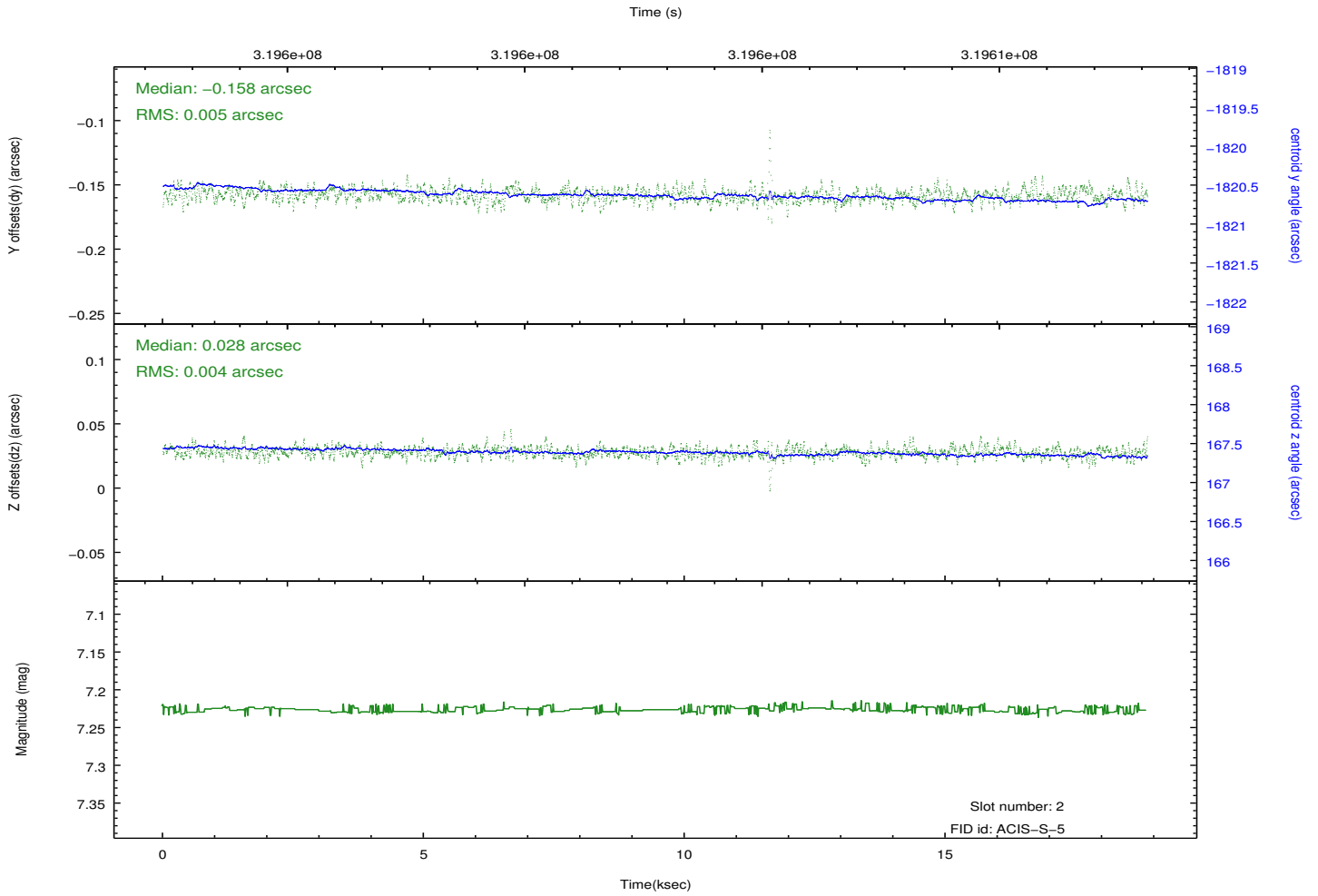
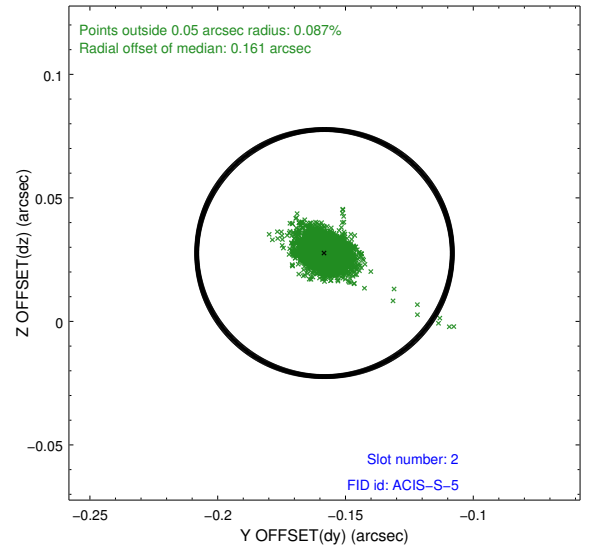
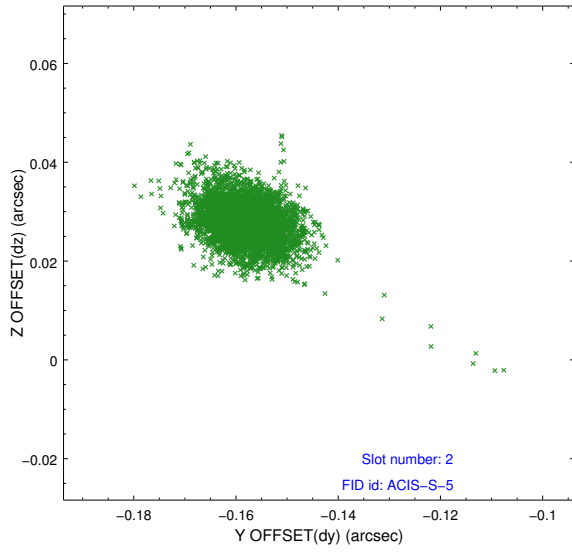
2.5.1 Slot 0



2.5.2 Slot 1



2.5.3 Slot 2



A Summary

A.1 Status

V&V Scientist	Beth Sundheim
V&V Date (YYYY-MM-DD)	2012.05.14
V&V Edition	1
V&V Disposition and Status	OK
V&V Charge Time	18.4760001

A.2 Comments