

# V&V Reference Report

## L2 ASCDS Version : 8.4.4

Observation 9263 - L2 Version 2  
Chandra X-Ray Center

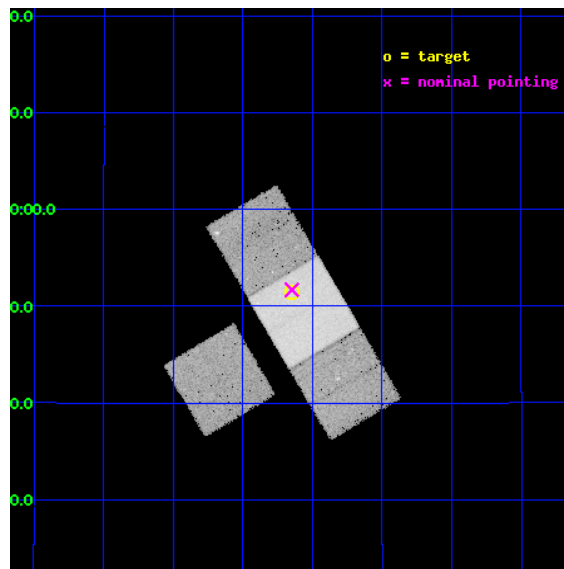
L2 Processing Date : May 9 2012

## Contents

<b>1</b>	<b>Front</b>	<b>2</b>
<b>2</b>	<b>OBI</b>	<b>3</b>
2.1	OBI . . . . .	3
2.1.1	Images . . . . .	3
2.1.2	Bias . . . . .	3
2.1.3	Parameters . . . . .	4
2.1.4	Events . . . . .	4
2.2	Compared Parameters . . . . .	5
2.3	Aspect . . . . .	6
2.4	Star Slots . . . . .	9
2.4.1	Slot 3 . . . . .	9
2.4.2	Slot 4 . . . . .	10
2.4.3	Slot 5 . . . . .	11
2.4.4	Slot 6 . . . . .	12
2.4.5	Slot 7 . . . . .	13
2.5	FID Slots . . . . .	14
2.5.1	Slot 0 . . . . .	14
2.5.2	Slot 1 . . . . .	15
2.5.3	Slot 2 . . . . .	16
<b>A</b>	<b>Summary</b>	<b>17</b>
A.1	Status . . . . .	17
A.2	Comments . . . . .	17

# 1 Front

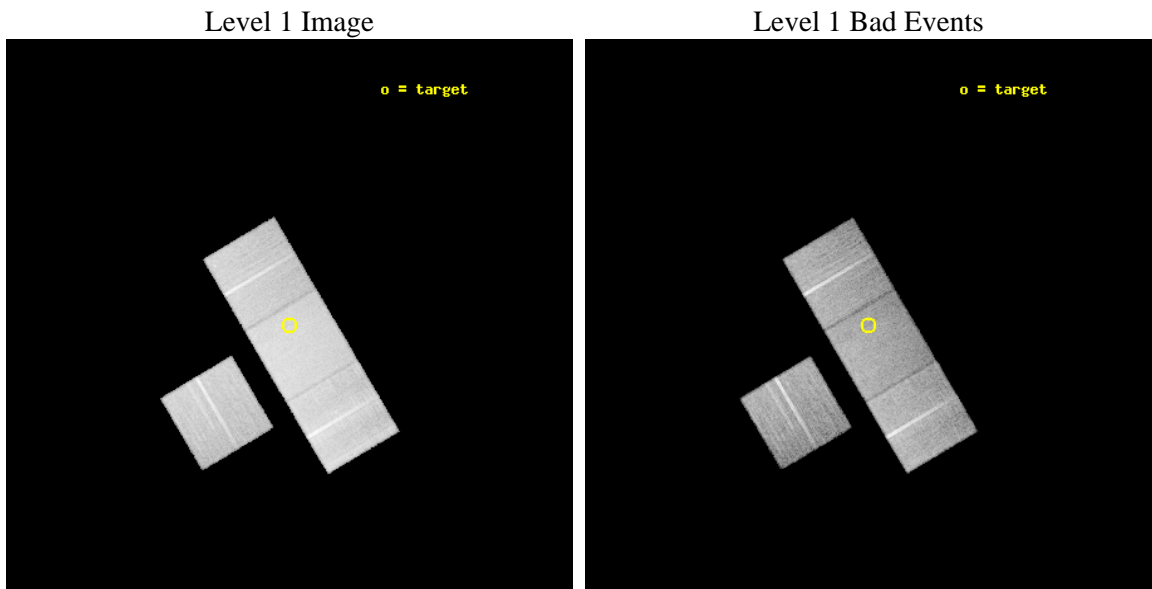
seq_num	701704	Sequence number
obs_id	9263	Observation id
title	Orientation effects in the X-ray and multi-wavelength properties of high-z, 3CRR quasars.	Proposal title
observer	Dr. Belinda Wilkes	Principal investigator
object	4C13.66	Source name
dtcycle	0	&#160
cycle	P	events from which exps? Prim/Second/Both
ra_targ	270.412083	Observer's specified target RA [deg]
dec_targ	13.85675	Observer's specified target Dec [deg]
ra_nom	270.41196422619	Nominal RA [deg]
dec_nom	13.861598039032	Nominal Dec [deg]
roll_nom	59.449715546896	Nominal Roll [deg]
revision	2	Processing version of data
ontime	20165.500155091	Sum of GTIs [s]
livetime	19902.02304994	Livetime [s]
ontime3	20165.500155091	Sum of GTIs [s]
ontime6	20162.359194815	Sum of GTIs [s]
ontime7	20165.500155091	Sum of GTIs [s]
ontime8	20165.500155091	Sum of GTIs [s]
l2events	175532	Number of level 2 events



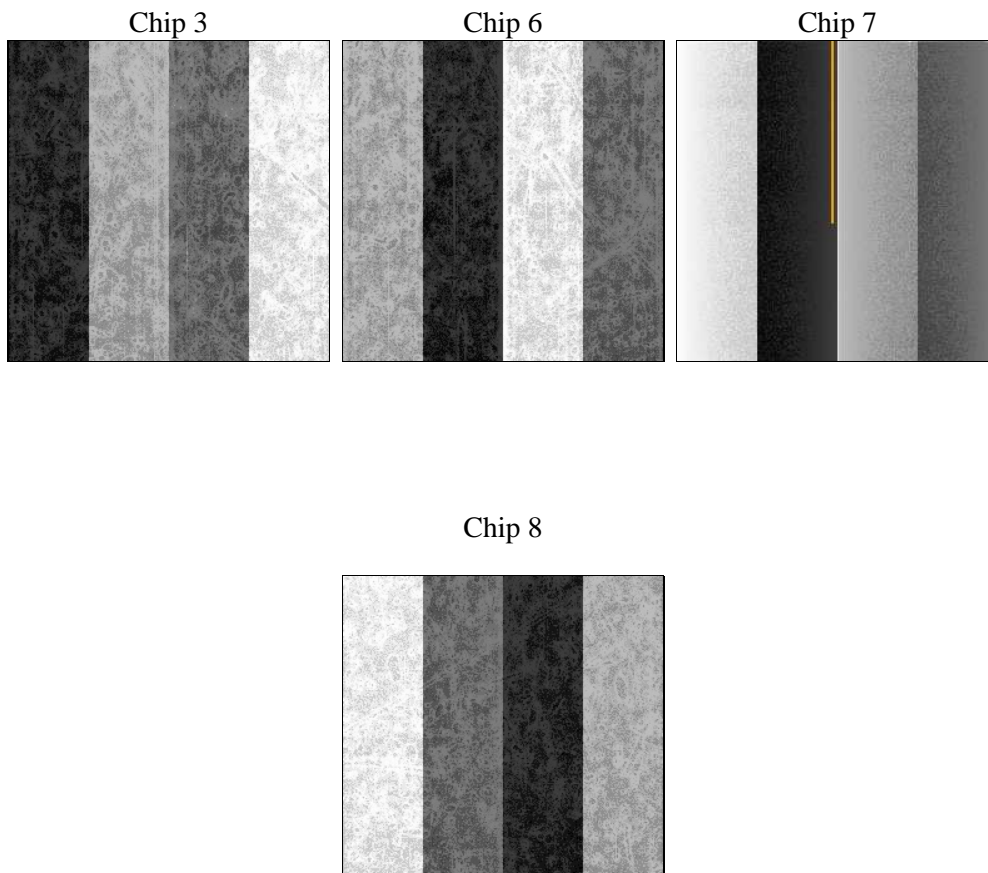
## 2 OBI

### 2.1 OBI

#### 2.1.1 Images



#### 2.1.2 Bias



### 2.1.3 Parameters

obi_num	0	Obi number	sched_exp_time	20000.000000	[s] Scheduled observation exposure time
ascdsver	8.4.4	Processing system revision	ontime	20165.500155091	Sum of GTIs [s]
caldsver	4.4.9	&#160	ontime3	20165.500155091	Sum of GTIs [s]
date	2012-05-09T03:29:45	Date and time of file creation	ontime6	20162.359194815	Sum of GTIs [s]
revision	2	Processing version of data	ontime7	20165.500155091	Sum of GTIs [s]
			ontime8	20165.500155091	Sum of GTIs [s]
			l1events	900082	Number of level 1 events

### 2.1.4 Events

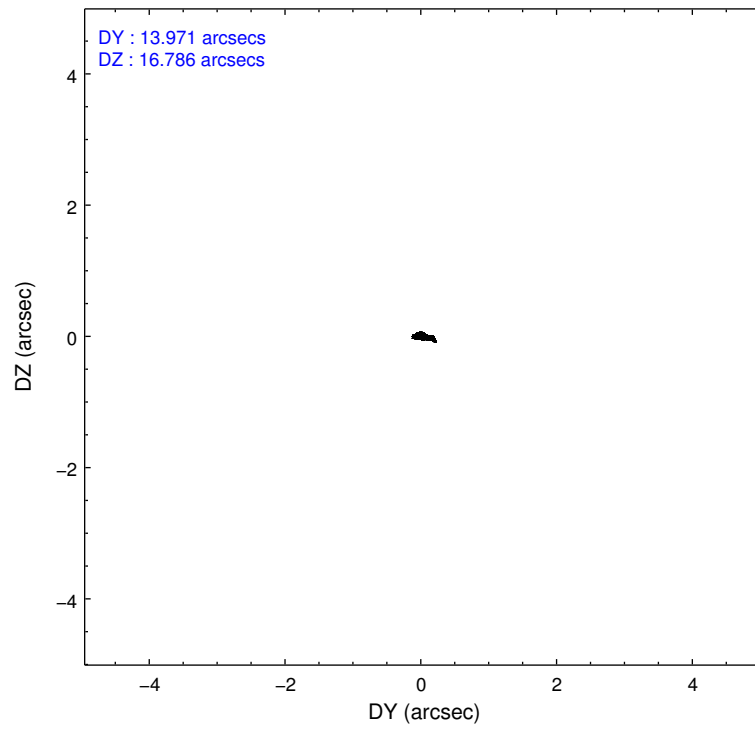
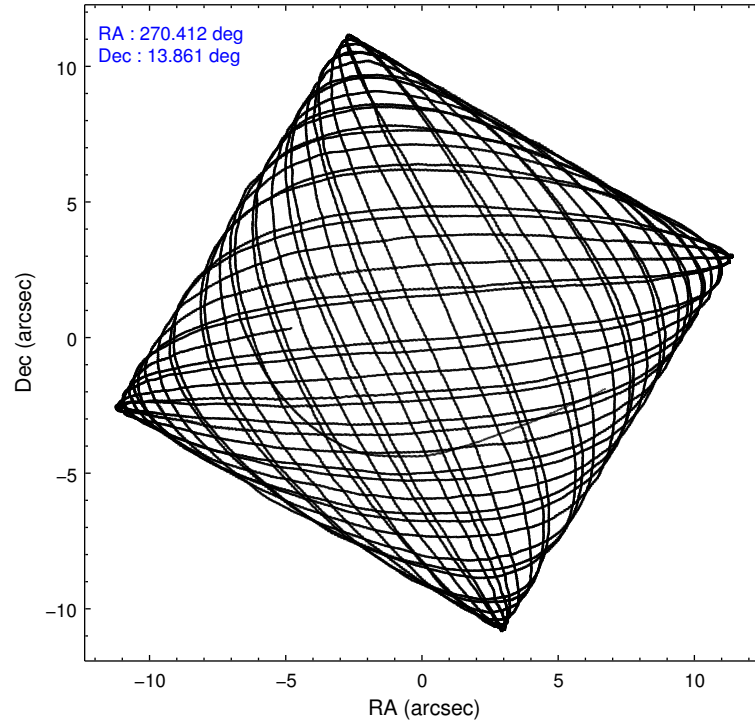
	ccd 3	ccd 6	ccd 7	ccd 8
level 1 events	185622	196734	268019	249707
rejected events	162410	172710	156419	193190
rejected %	87%	87%	58%	77%

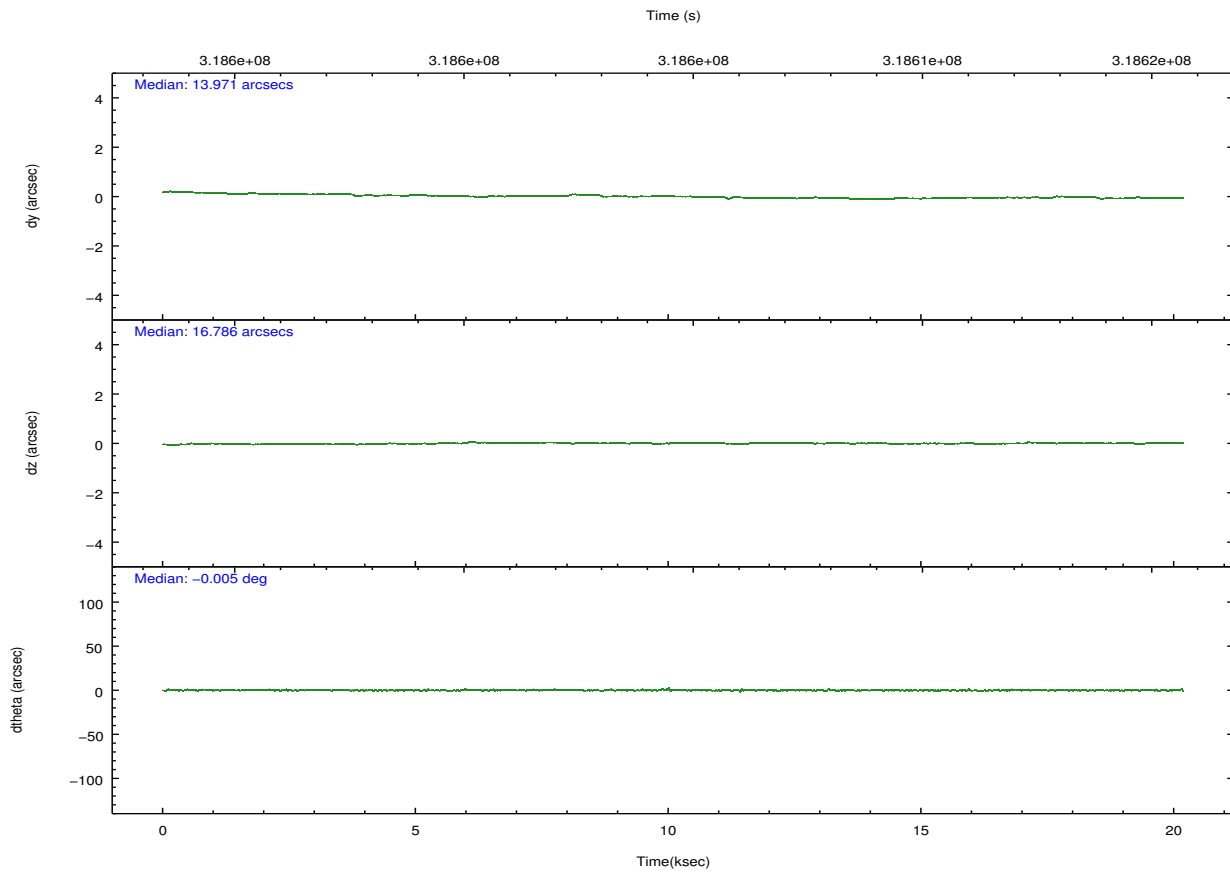
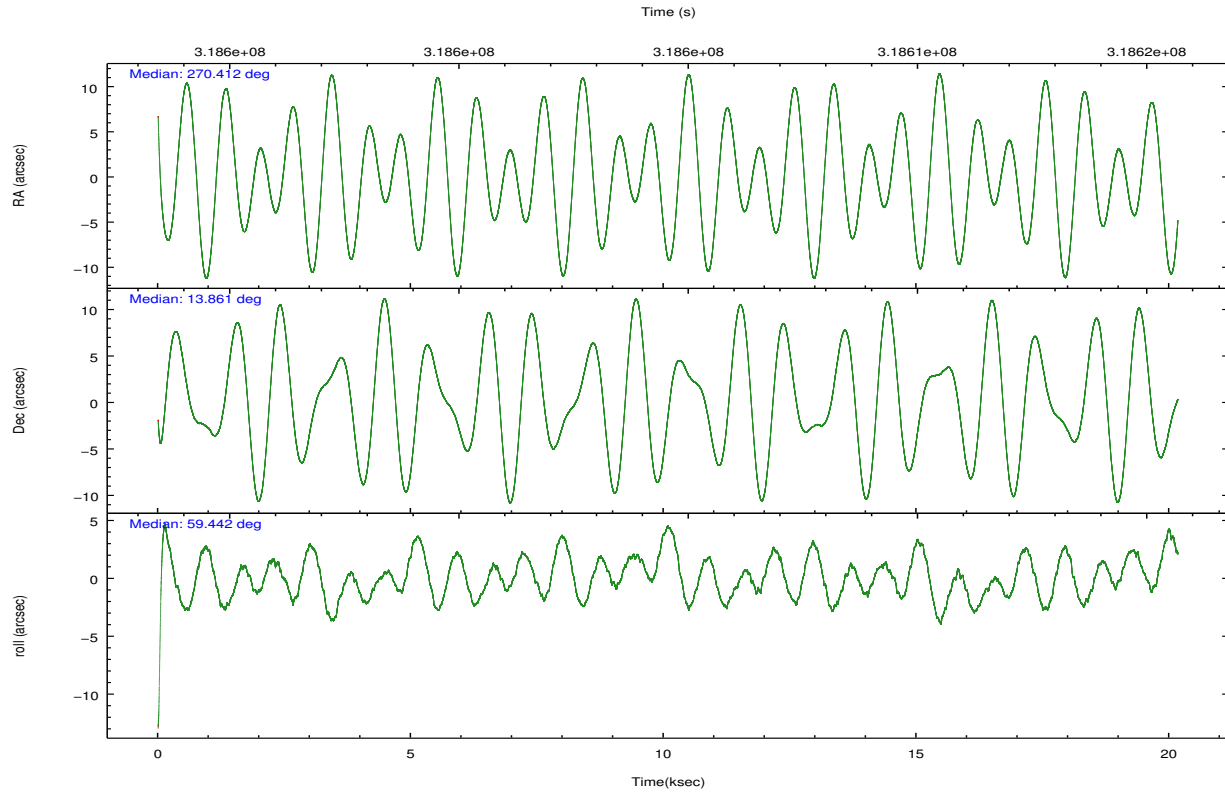
	ccd 3	ccd 6	ccd 7	ccd 8
grade 0 events	10120	9549	9409	17929
	5%	4%	3%	7%
grade 1 events	113	104	299	182
	0%	0%	0%	0%
grade 2 events	4625	5358	22847	12647
	2%	2%	8%	5%
grade 3 events	2146	2180	9490	6162
	1%	1%	3%	2%
grade 4 events	2191	2091	9425	5730
	1%	1%	3%	2%
grade 5 events	9107	9585	24856	12253
	4%	4%	9%	4%
grade 6 events	4179	4909	60661	14228
	2%	2%	22%	5%
grade 7 events	153141	162958	131032	180576
	82%	82%	48%	72%

## 2.2 Compared Parameters

Parameter	Planned	Actual	Parameter	Planned	Actual
Instrument	ACIS	ACIS	Obspar format version number	7	7
Detector	ACIS-3678	ACIS-3678	Obspar file type	PREDICTED	ACTUAL
Grating	NONE	NONE	Obspar update status	NONE	UPDATED
Data mode	FAINT	FAINT	CCD I0 on	N	N
Observation mode	POINTING	POINTING	CCD I1 on	N	N
[deg] Pointing RA	270.412103	270.4119642261855	CCD I2 on	N	N
[deg] Pointing Dec	13.834264	13.86159803903194	CCD I3 on	O1	Y
[deg] Pointing Roll	59.293066	59.44971554689638	CCD S0 on	N	N
[mm] SIM focus pos	-0.684267	-0.6828225247311905	CCD S1 on	N	N
[mm] SIM defocus	0	0.001444936568705701	CCD S2 on	O3	Y
[mm] SIM translation stage pos	-190.132523	-190.1425803651734	CCD S3 on	Y	Y
[mm] SIM translation stage offset	0	0.01005778216563158	CCD S4 on	O2	Y
[s] Observation start time (MET)	318594647.184000	318593695.23874	CCD S5 on	N	N
Observation start date	2008-02-05T10:29:42	2008-02-05T10:14:55	Number of optional ACIS chips dropped	0	0
[s] Observation end time (MET)	318614647.184000	318615746.06481	On-chip summing requested	N	N
Observation end date	2008-02-05T16:03:02	2008-02-05T16:22:26	Subarray requested	NONE	NONE
Read mode	TIMED	TIMED	Alternating exposures requested	N	N
			[s] Primary exposure time	0.000000	3.1

## 2.3 Aspect



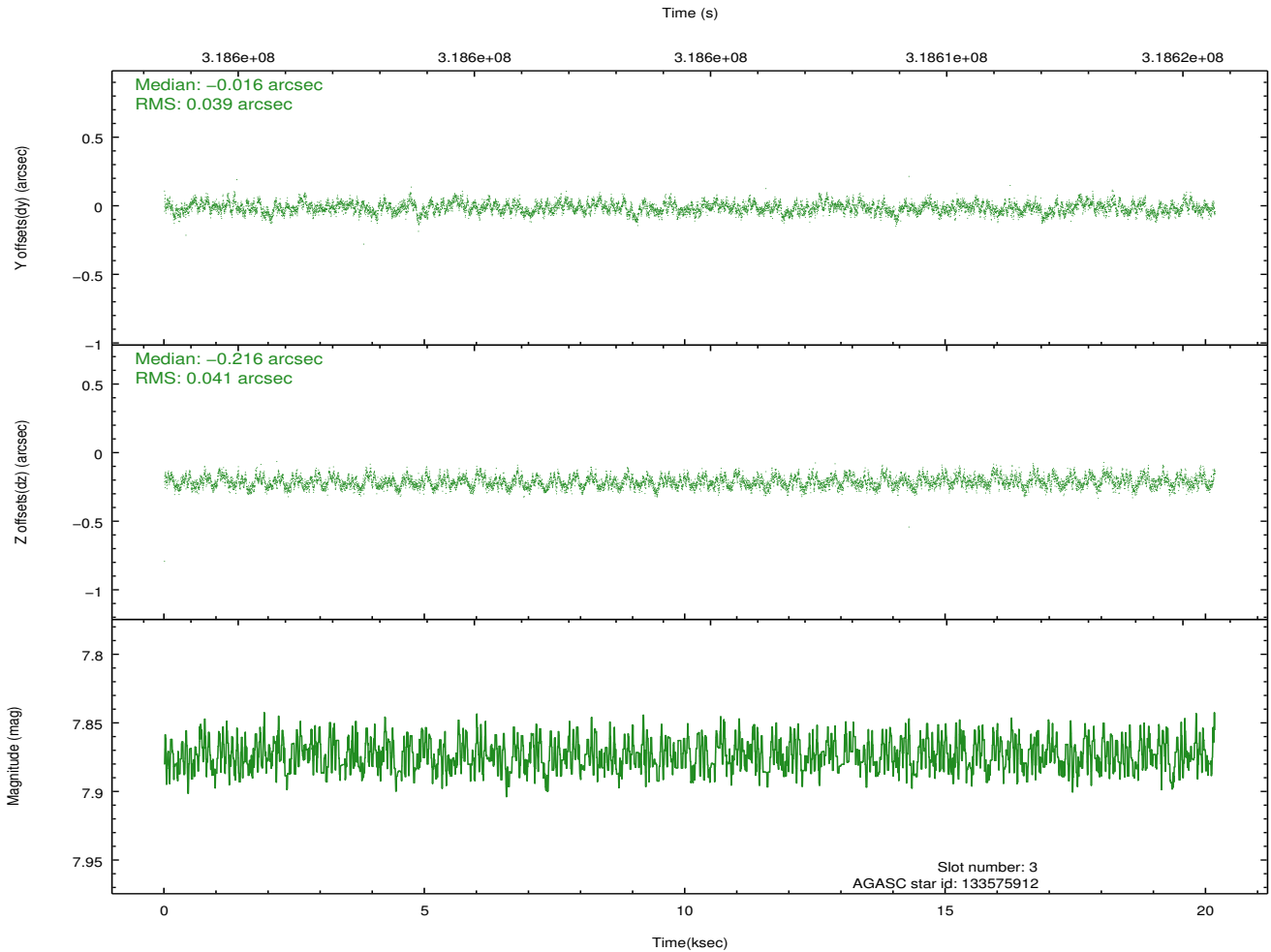
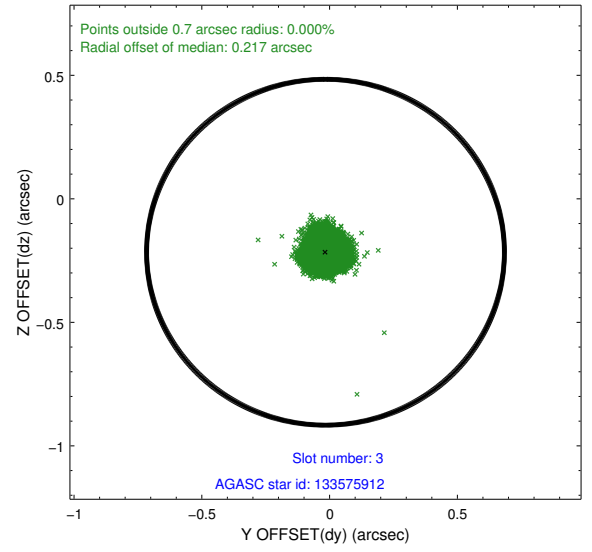
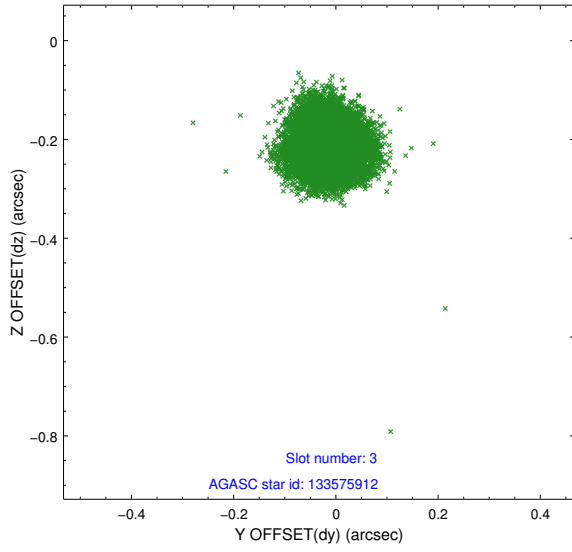


### Slot Statistics

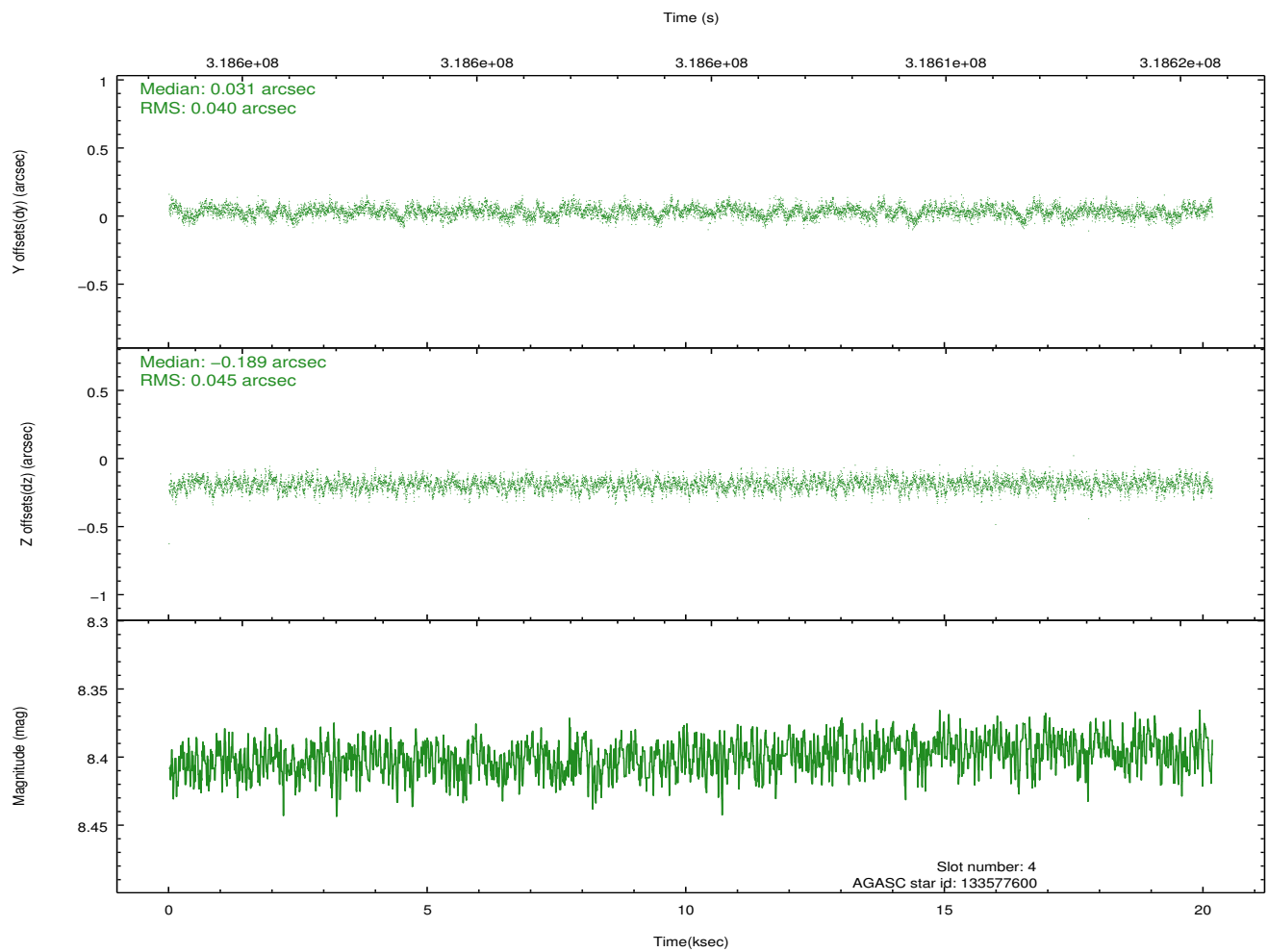
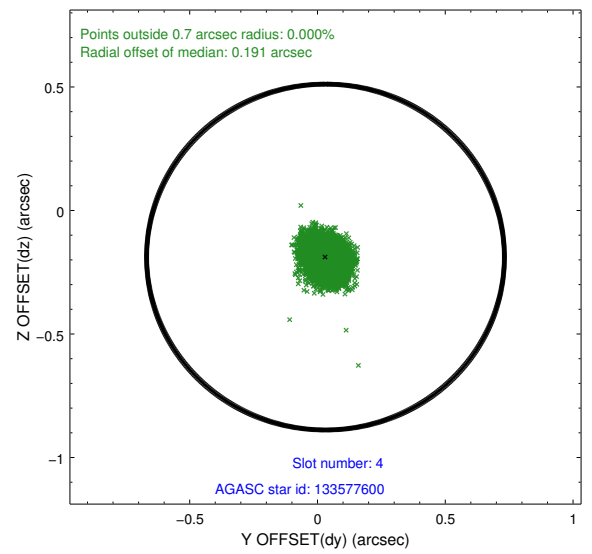
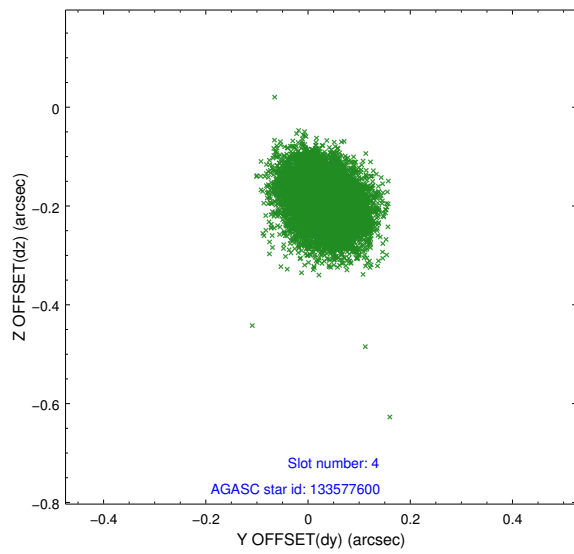
slot	status	id	mag	n_pts	med_dy	med_dz	dr1	dr2	ra	dec	mean_y	mean_z
0	FID	ACIS-S-1	7.18	4921	0.106	-0.090	0.009	0.016	0.000000	0.000000	929.20	-1733.89
1	FID	ACIS-S-5	7.22	4921	-0.159	0.067	0.008	0.014	0.000000	0.000000	-1819.93	163.67
2	FID	ACIS-S-6	7.32	4921	0.032	0.035	0.007	0.012	0.000000	0.000000	394.52	807.77
3	GUIDE	133575912	7.87	9833	-0.016	-0.216	0.061	0.094	269.740491	13.872019	-1079.23	2088.93
4	GUIDE	133577600	8.40	9839	0.031	-0.189	0.063	0.103	269.796975	13.904995	-876.47	1979.57
5	GUIDE	133695840	7.91	9840	-0.119	0.138	0.069	0.108	270.896343	14.092592	1664.66	-977.58
6	GUIDE	133703320	6.82	9841	-0.229	-0.144	0.055	0.084	270.280132	14.120009	649.38	921.39
7	GUIDE	133702544	9.16	9835	0.334	0.409	0.089	0.142	270.328055	13.142322	-2291.36	-1018.45

## 2.4 Star Slots

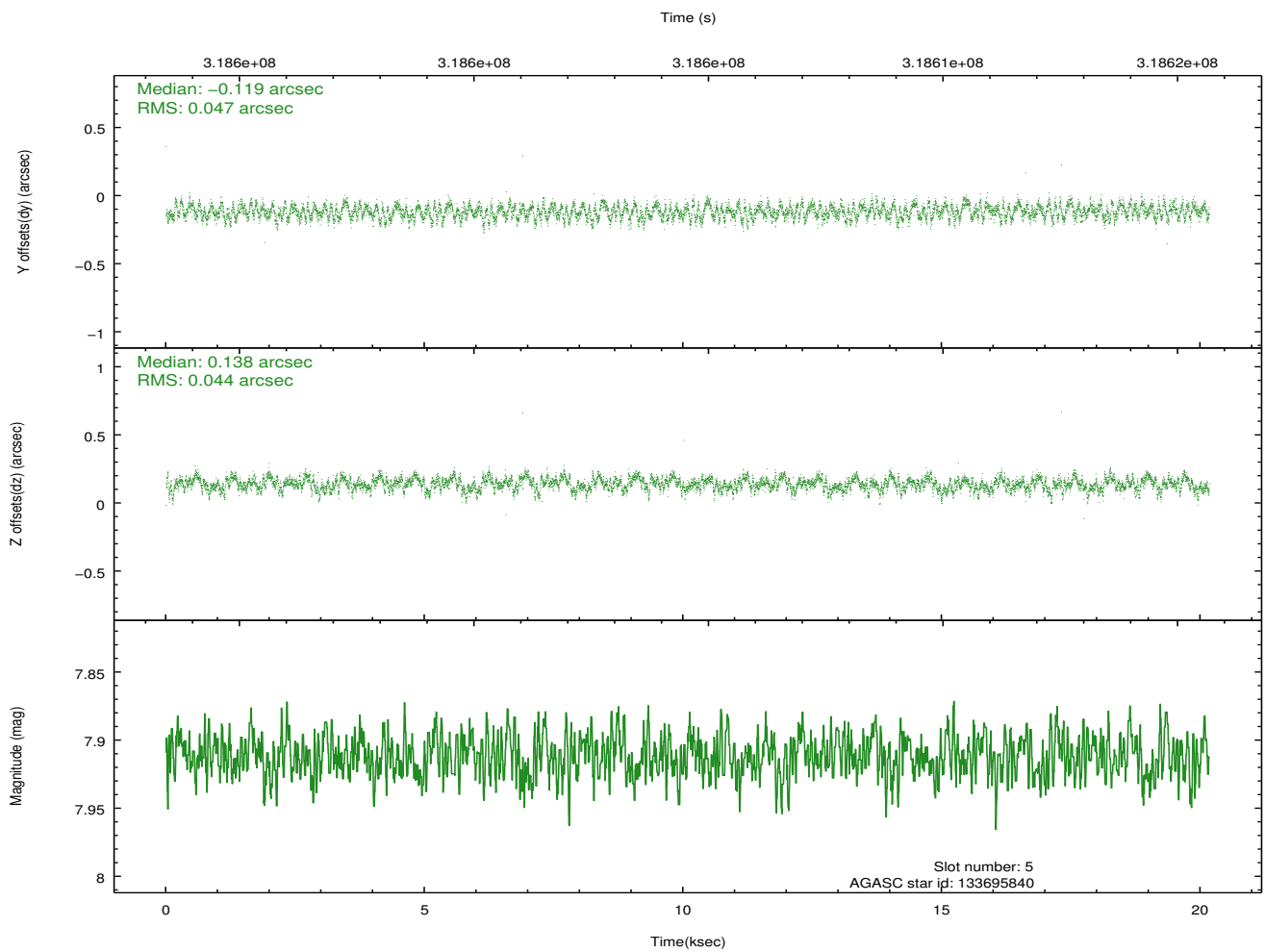
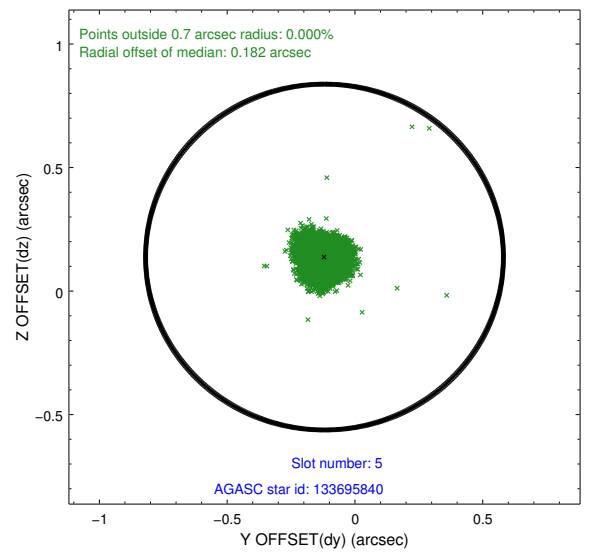
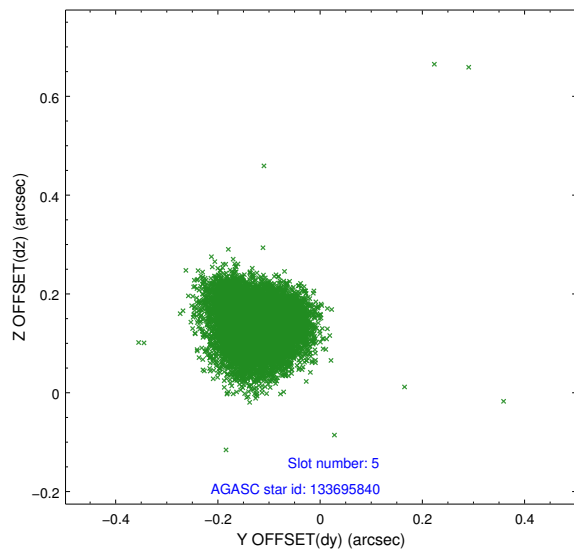
### 2.4.1 Slot 3



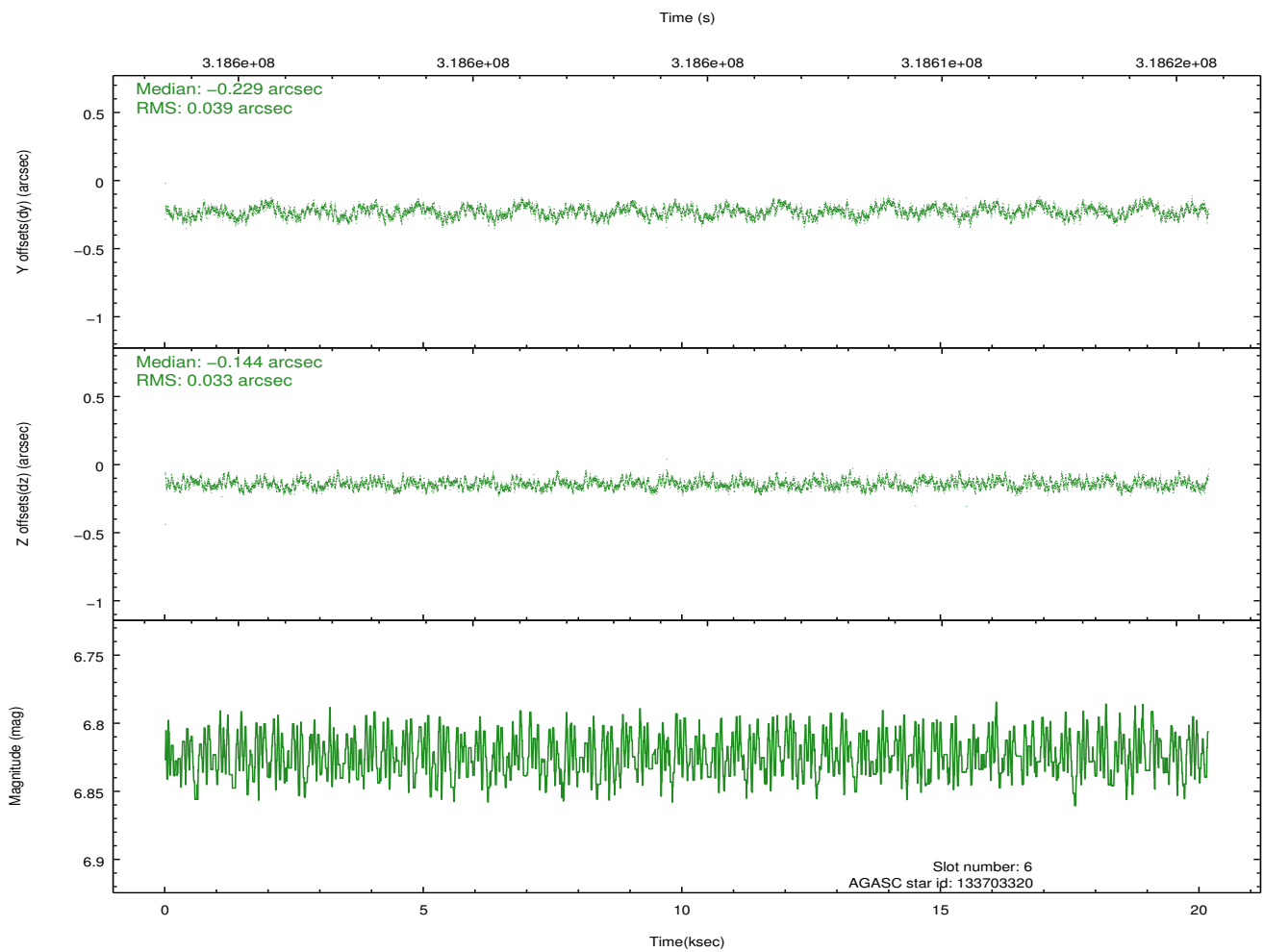
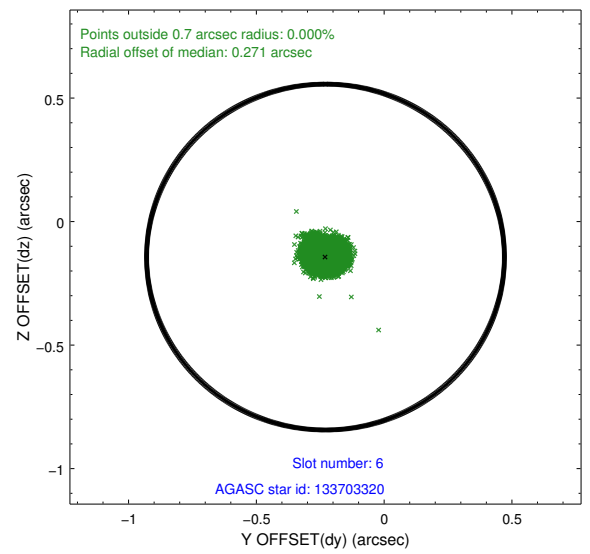
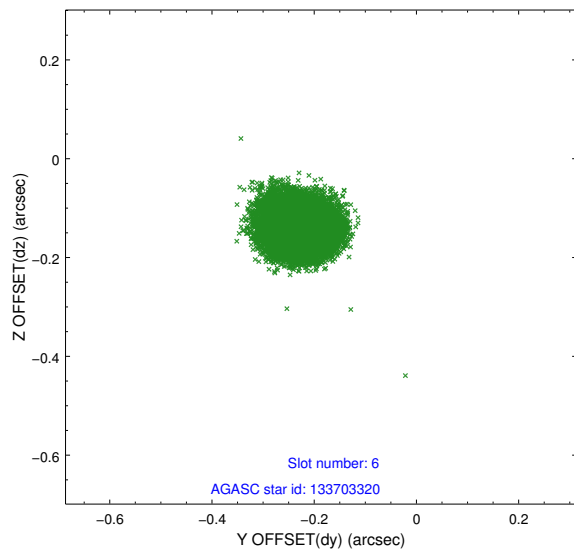
## 2.4.2 Slot 4



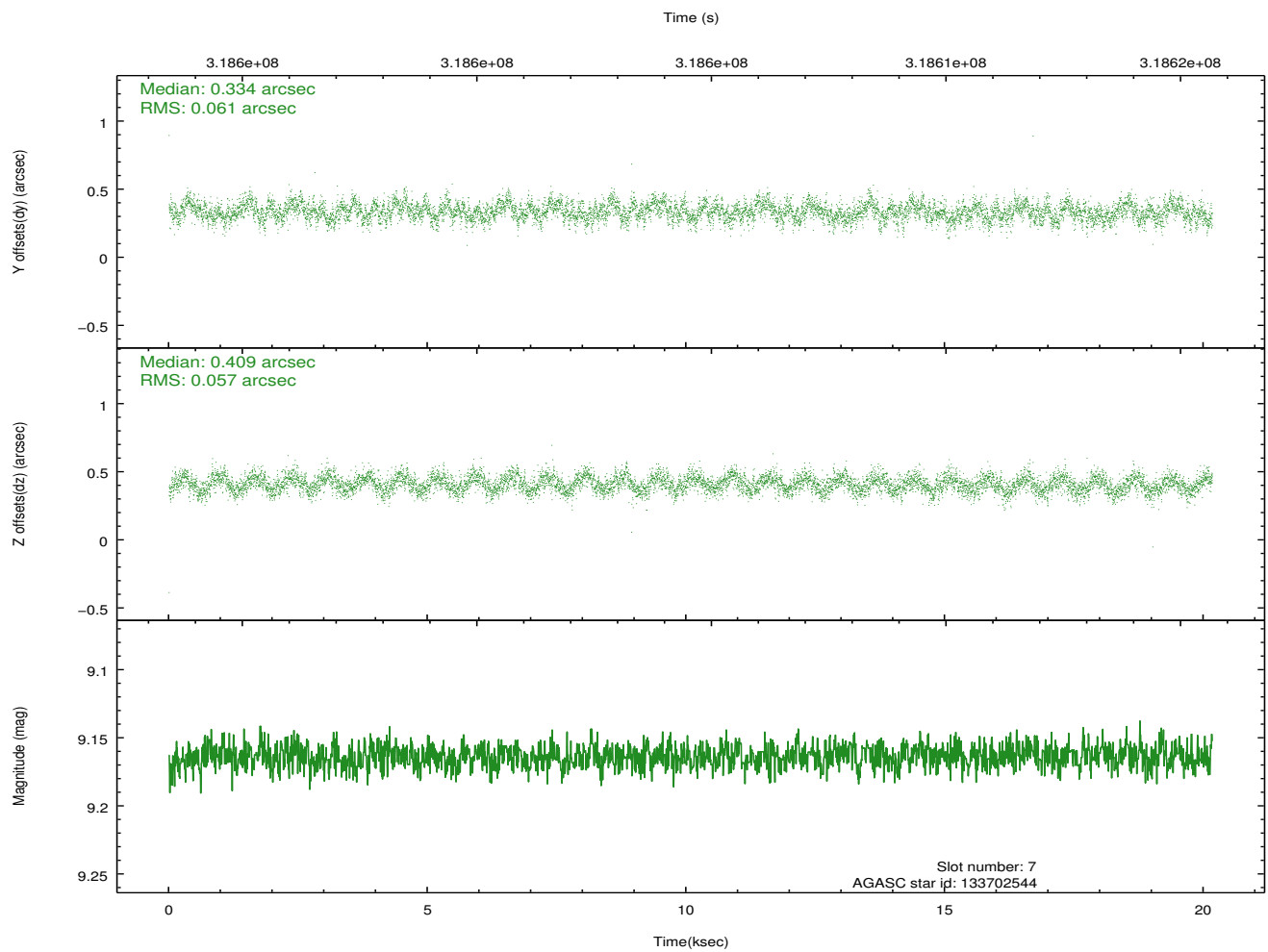
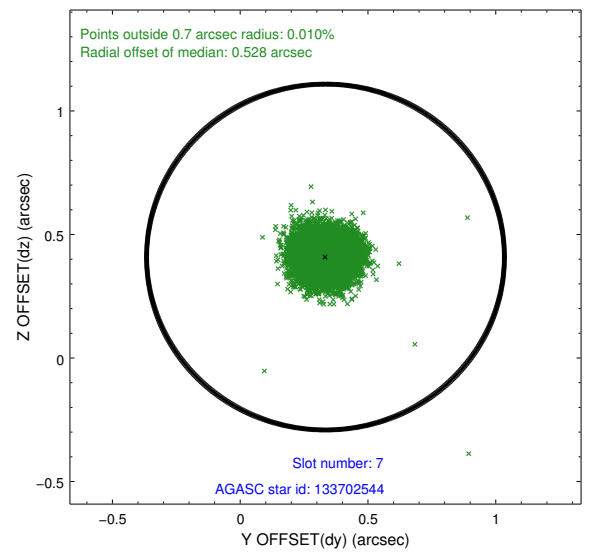
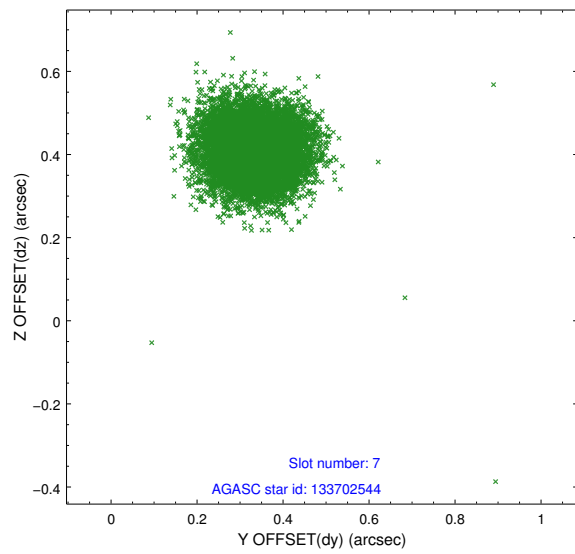
### 2.4.3 Slot 5



## 2.4.4 Slot 6

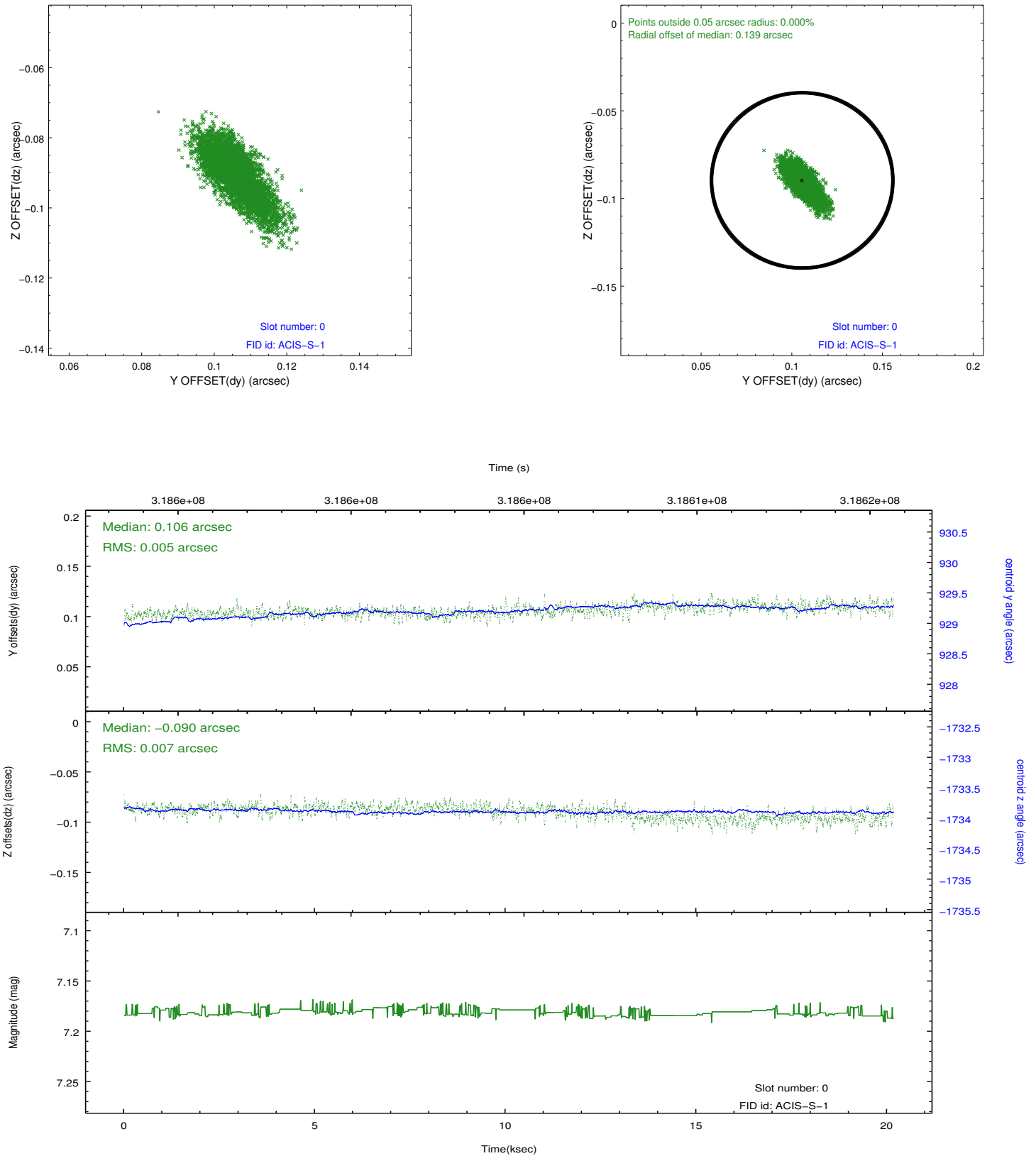


## 2.4.5 Slot 7

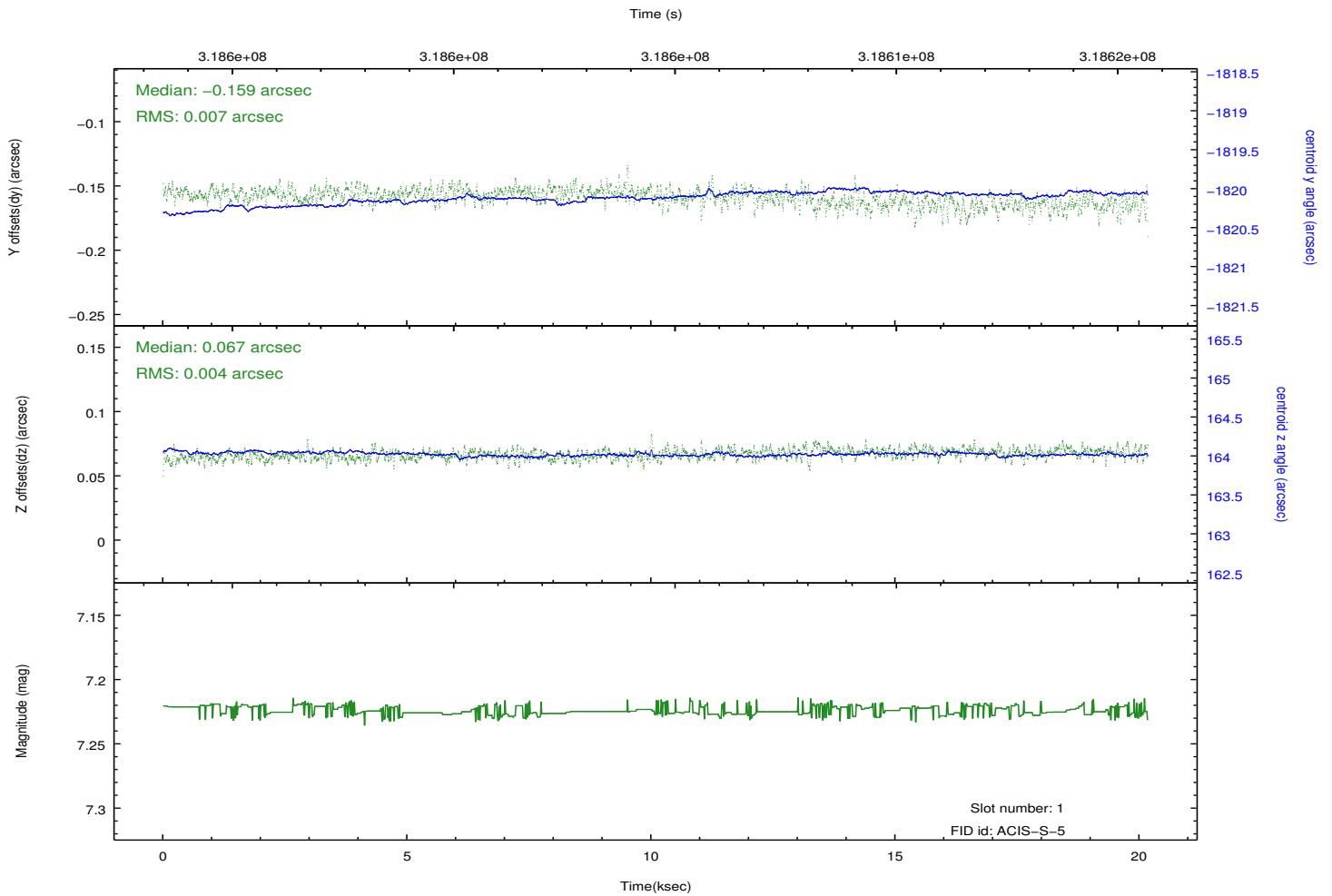
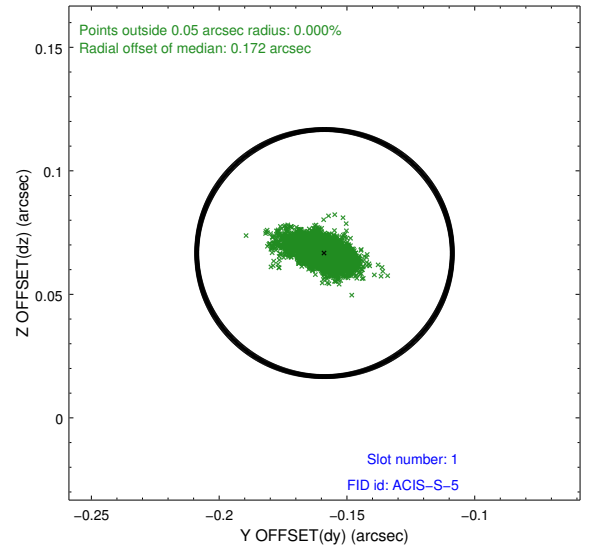
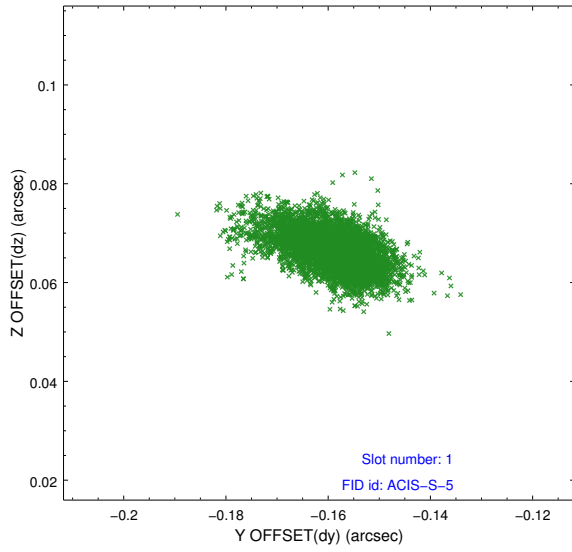


## 2.5 FID Slots

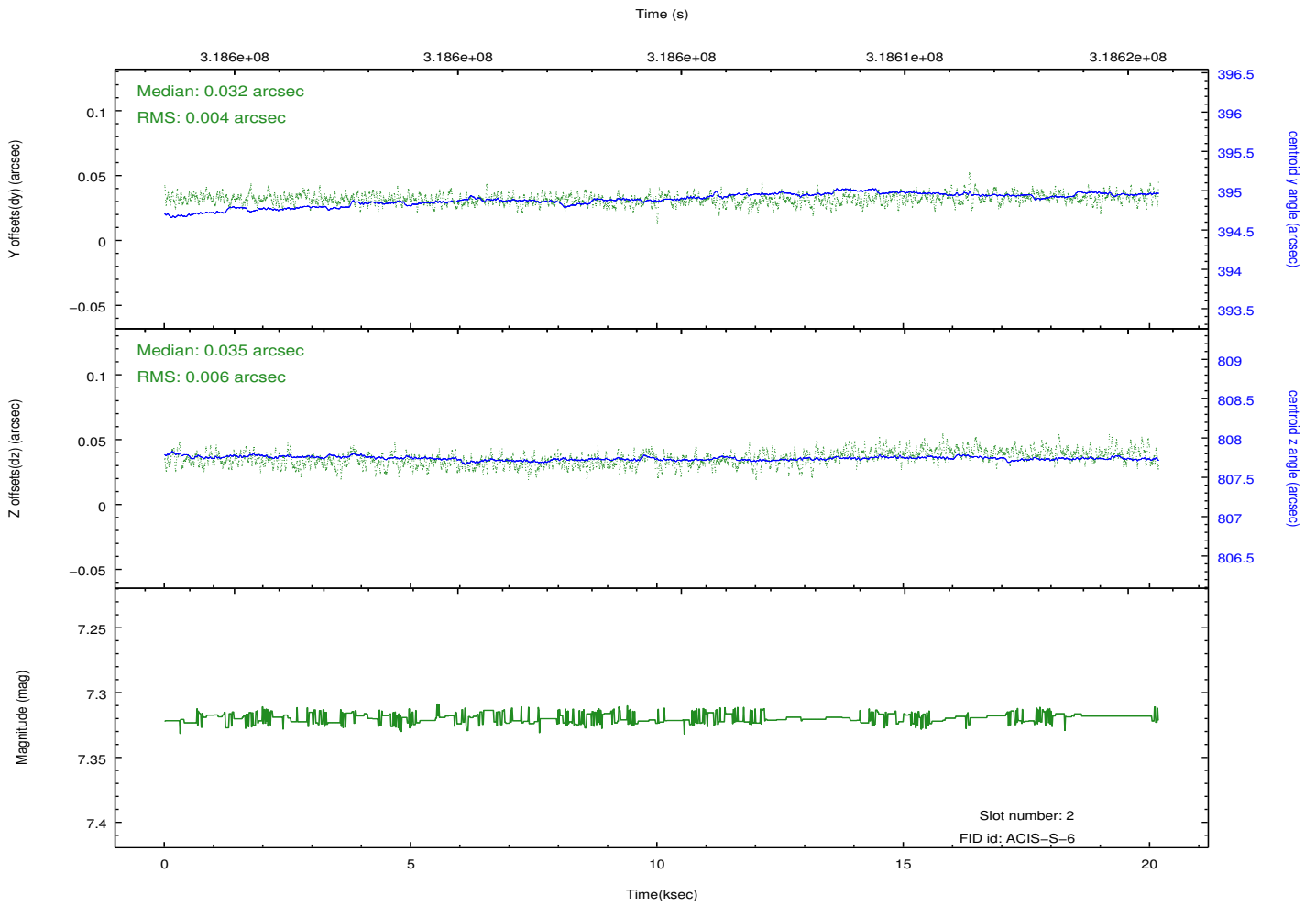
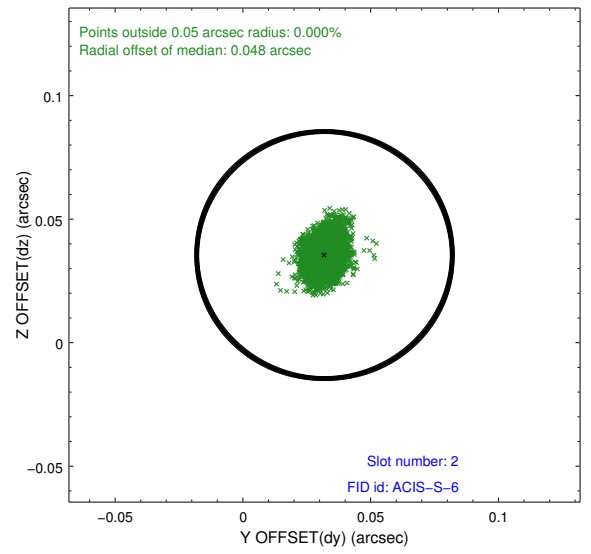
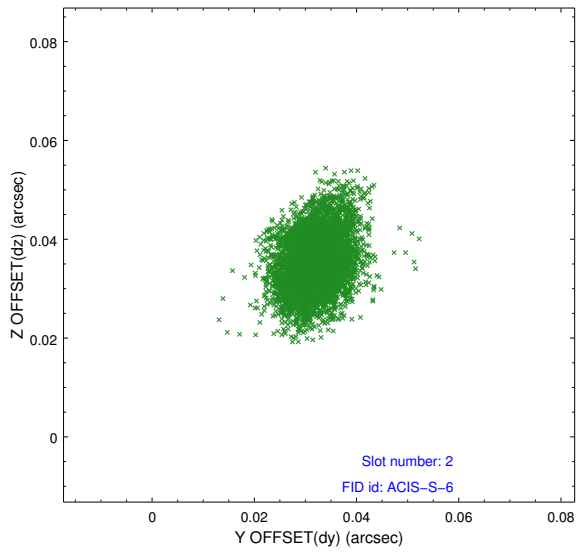
### 2.5.1 Slot 0



## 2.5.2 Slot 1



### 2.5.3 Slot 2



## **A Summary**

### **A.1 Status**

V&V Scientist	Jen Lauer
V&V Date (YYYY-MM-DD)	2012.05.10
V&V Edition	1
V&V Disposition and Status	OK
V&V Charge Time	20.1655001

### **A.2 Comments**