

V&V Reference Report

L2 ASCDS Version : 8.4.4

Observation 9593 - L2 Version 3
Chandra X-Ray Center

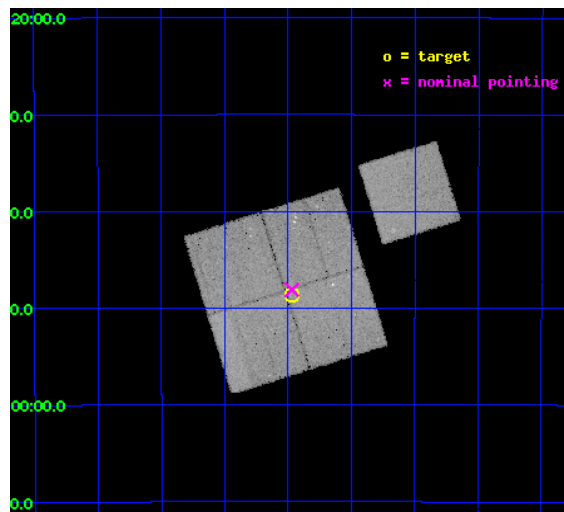
L2 Processing Date : May 23 2012

Contents

1	Front	2
2	OBI	3
2.1	OBI	3
2.1.1	Images	3
2.1.2	Bias	3
2.1.3	Parameters	4
2.1.4	Events	4
2.2	Compared Parameters	5
2.3	Aspect	6
2.4	Star Slots	9
2.4.1	Slot 3	9
2.4.2	Slot 4	10
2.4.3	Slot 5	11
2.4.4	Slot 6	12
2.4.5	Slot 7	13
2.5	FID Slots	14
2.5.1	Slot 0	14
2.5.2	Slot 1	15
2.5.3	Slot 2	16
A	Summary	17
A.1	Status	17
A.2	Comments	17

1 Front

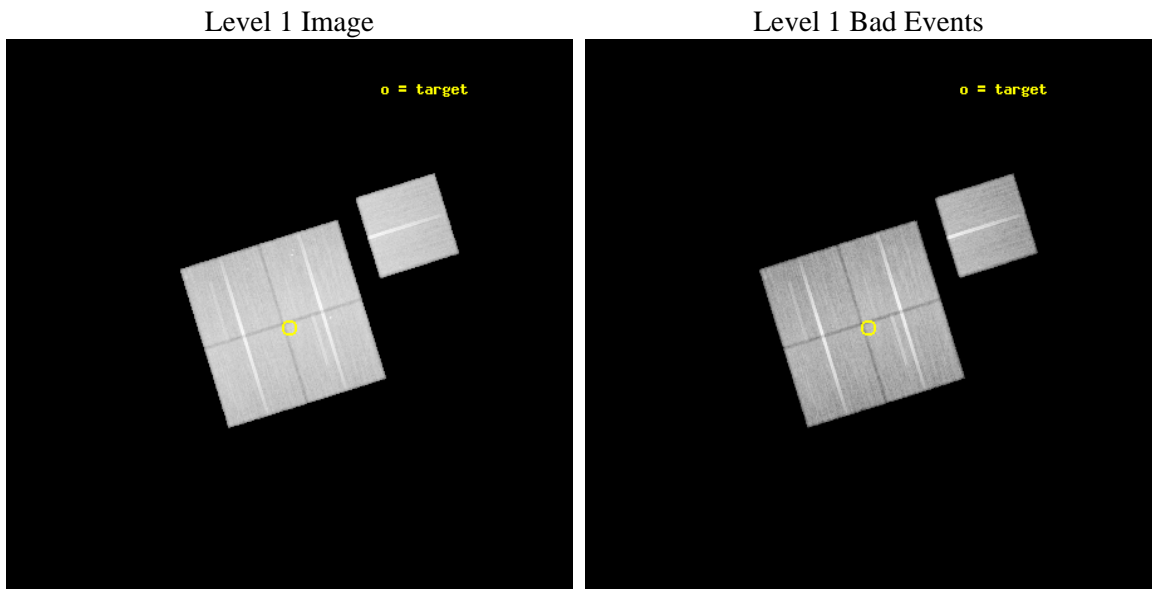
seq_num	900737	Sequence number
obs_id	9593	Observation id
title	The Chandra Deep Field-South Survey: A Public Chandra Legacy	Propo
observer	Dr. Harvey Tananbaum	Principal investigator
object	Chandra Deep Field-South	Source name
dtcycle	0	
cycle	P	events from which exps? Prim/Second/Both
ra_targ	53.1175	Observer's specified target RA [deg]
dec_targ	-27.81	Observer's specified target Dec [deg]
ra_nom	53.117509643077	Nominal RA [deg]
dec_nom	-27.801914852964	Nominal Dec [deg]
roll_nom	72.708693401624	Nominal Roll [deg]
revision	3	Processing version of data
ontime	47045.320487976	Sum of GTIs [s]
livetime	46430.63874154	Livetime [s]
ontime0	47038.915446997	Sum of GTIs [s]
ontime1	47045.238407969	Sum of GTIs [s]
ontime2	47038.997527003	Sum of GTIs [s]
ontime3	47045.320487976	Sum of GTIs [s]
ontime6	47035.733386934	Sum of GTIs [s]
l2events	162210	Number of level 2 events



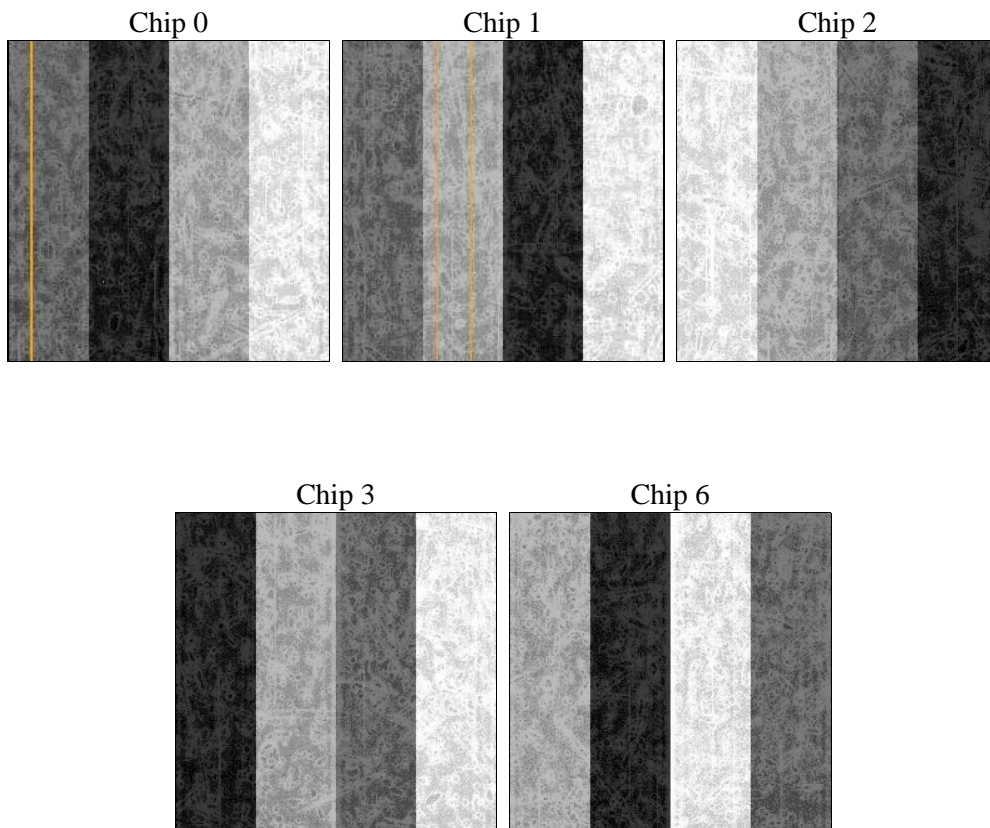
2 OBI

2.1 OBI

2.1.1 Images



2.1.2 Bias



2.1.3 Parameters

obi_num	0	Obi number	sched_exp_time	47000.000000	[s] Scheduled observation exposure time
ascdsver	8.4.4	Processing system revision	ontime	47045.320487976	Sum of GTIs [s]
caldbver	4.4.9	 	ontime0	47038.915446997	Sum of GTIs [s]
date	2012-05-23T14:53:20	Date and time of file creation	ontime1	47045.238407969	Sum of GTIs [s]
revision	3	Processing version of data	ontime2	47038.997527003	Sum of GTIs [s]
			ontime3	47045.320487976	Sum of GTIs [s]
			ontime6	47035.733386934	Sum of GTIs [s]
			l1events	1861172	Number of level 1 events

2.1.4 Events

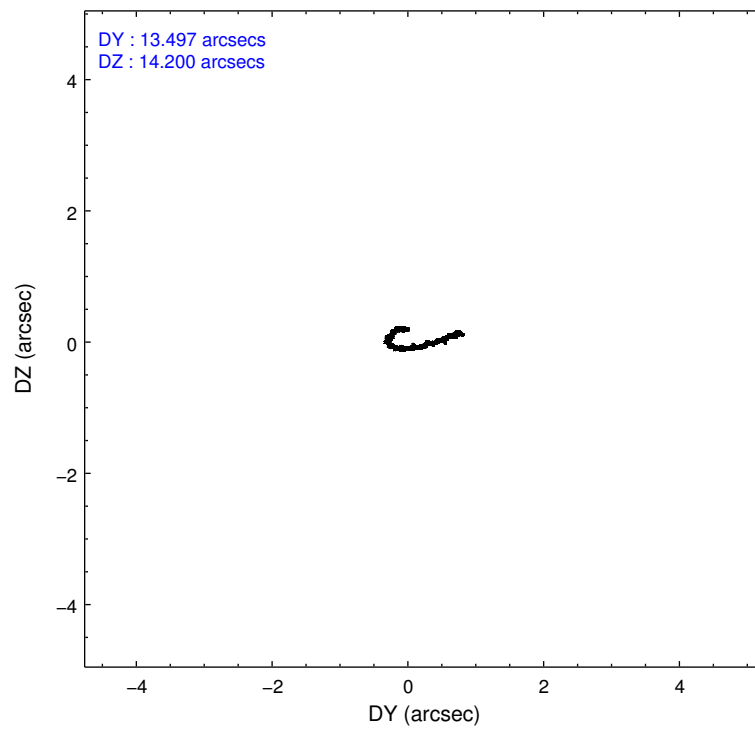
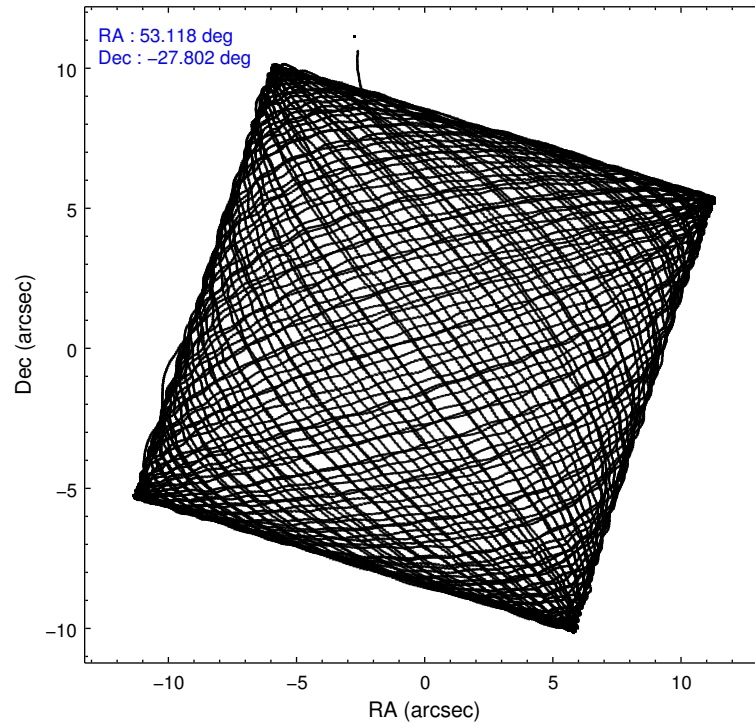
	ccd 0	ccd 1	ccd 2	ccd 3	ccd 6
level 1 events	354456	353087	401972	374204	377453
rejected events	316121	310209	363704	337563	338422
rejected %	89%	87%	90%	90%	89%

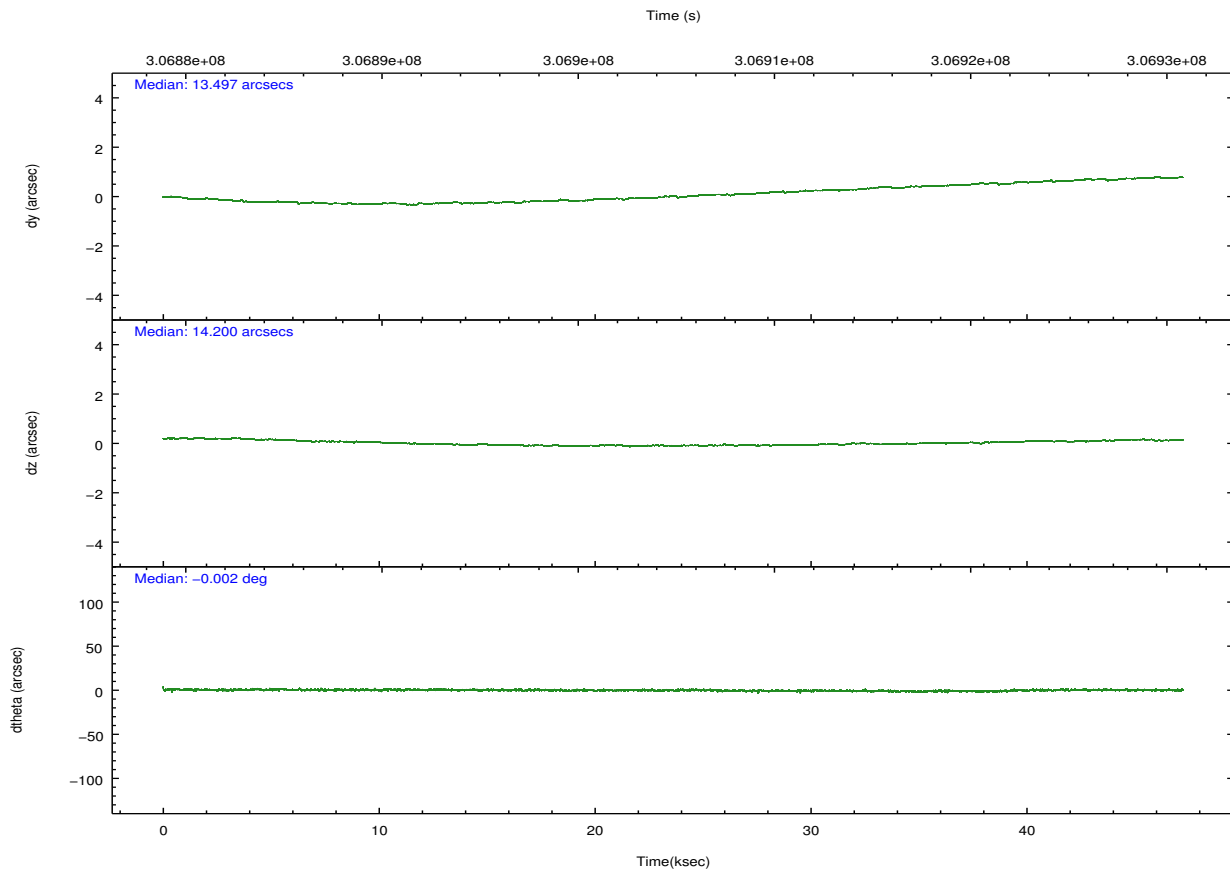
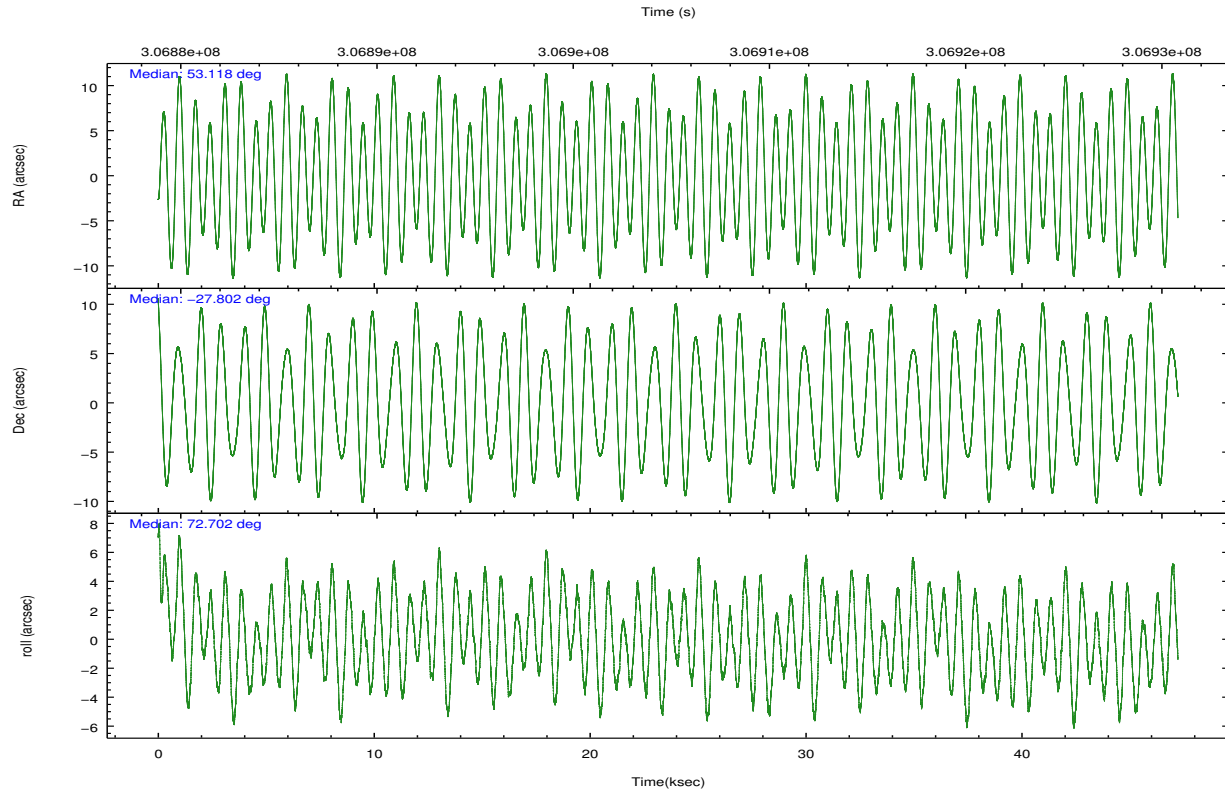
	ccd 0	ccd 1	ccd 2	ccd 3	ccd 6
grade 0 events	13507	15359	14277	13098	13776
	3%	4%	3%	3%	3%
grade 1 events	204	194	215	224	187
	0%	0%	0%	0%	0%
grade 2 events	9196	9678	9080	7955	8294
	2%	2%	2%	2%	2%
grade 3 events	4314	4622	3917	4279	4279
	1%	1%	0%	1%	1%
grade 4 events	3999	4472	3999	4086	4219
	1%	1%	0%	1%	1%
grade 5 events	13233	14471	12193	15150	15082
	3%	4%	3%	4%	3%
grade 6 events	7321	8750	6995	7227	8465
	2%	2%	1%	1%	2%
grade 7 events	302682	295541	351296	322185	323151
	85%	83%	87%	86%	85%

2.2 Compared Parameters

Parameter	Planned	Actual	Parameter	Planned	Actual
Instrument	ACIS	ACIS	Obspar format version number	7	7
Detector	ACIS-01236	ACIS-01236	Obspar file type	PREDICTED	ACTUAL
Grating	NONE	NONE	Obspar update status	NONE	UPDATED
Data mode	VFAINT	VFAINT	Number of optional ACIS chips dropped	0	0
Observation mode	POINTING	POINTING	On-chip summing requested	N	N
[deg] Pointing RA	53.124460	53.11750964307714	Subarray requested	NONE	NONE
[deg] Pointing Dec	-27.828719	-27.80191485296386	Alternating exposures requested	N	N
[deg] Pointing Roll	72.503244	72.7086934016244	[s] Primary exposure time	0.000000	3.1
[mm] SIM focus pos	-0.782348	-0.7809083437167272			
[mm] SIM defocus	0	0.001439871863259334			
[mm] SIM translation stage pos	-233.592463	-233.5874344608287			
[mm] SIM translation stage offset	0	-0.005018542100998502			
[s] Observation start time (MET)	306881439.184000	306880485.13516			
Observation start date	2007-09-22T20:49:34	2007-09-22T20:34:45			
[s] Observation end time (MET)	306928439.184000	306929315.62501			
Observation end date	2007-09-23T09:52:54	2007-09-23T10:08:35			
Read mode	TIMED	TIMED			

2.3 Aspect





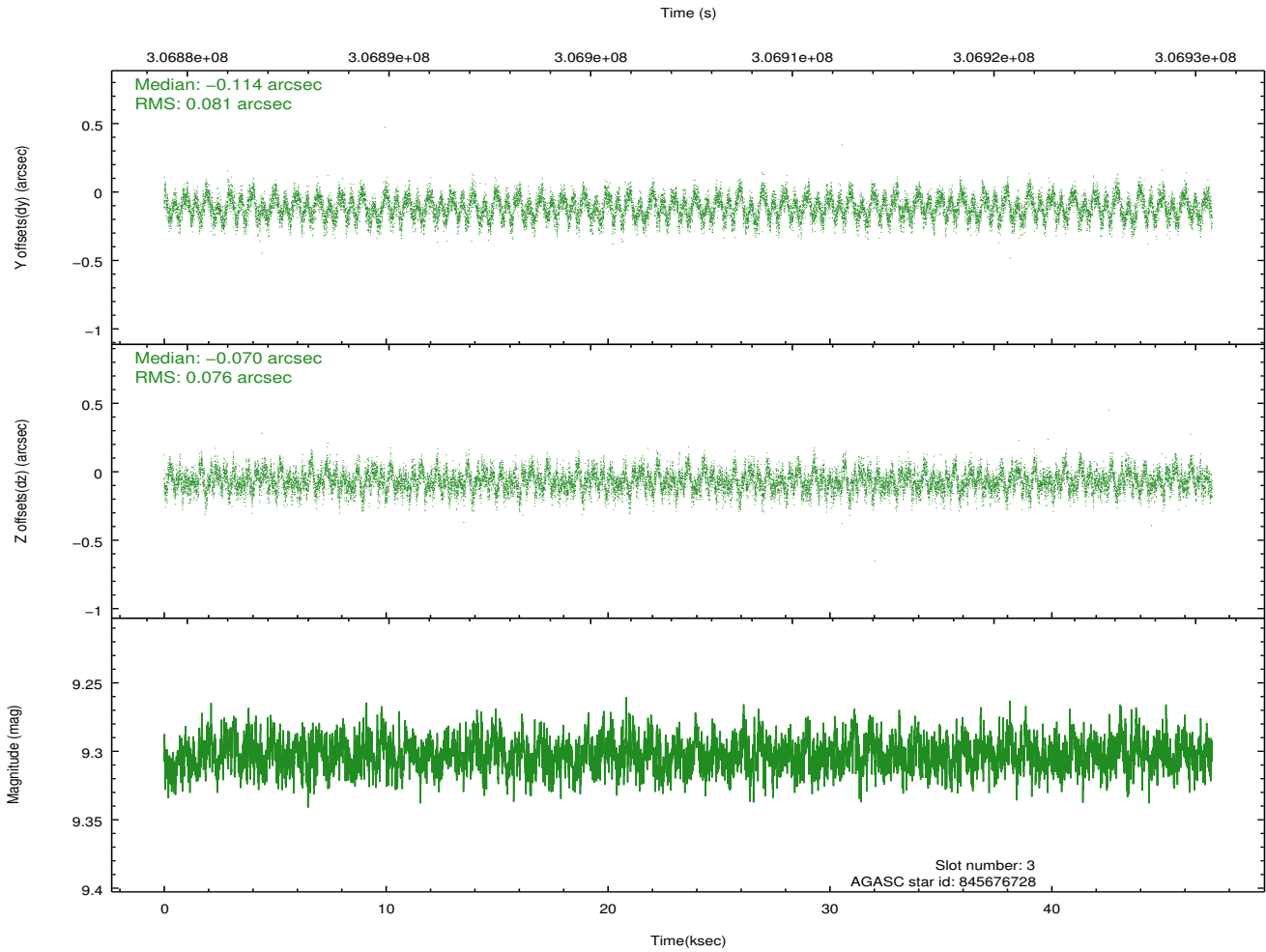
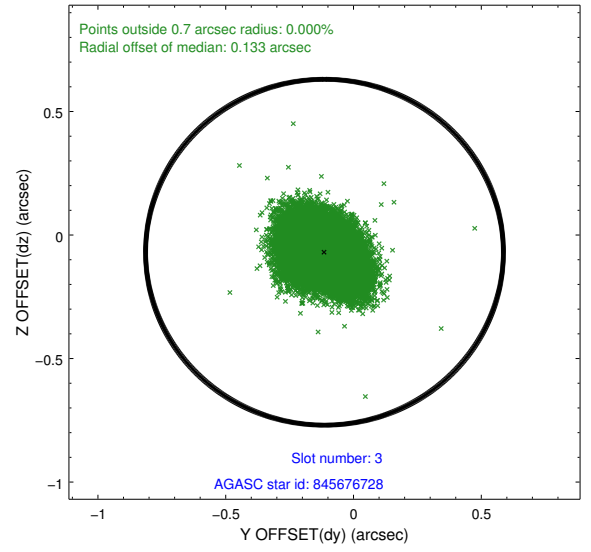
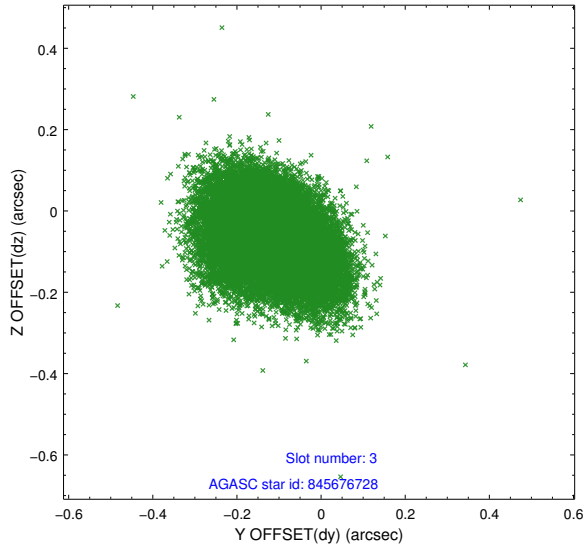
Slot Statistics

slot	status	id	mag	n_pts	med_dy	med_dz	dr1	dr2	ra	dec	mean_y	mean_z
0	FID	ACIS-I-1	7.12	11518	-0.017	0.044	0.012	0.021	0.000000	0.000000	925.88	-837.75
1	FID	ACIS-I-4	7.05	11518	0.169	0.001	0.009	0.016	0.000000	0.000000	2146.10	1062.02
2	FID	ACIS-I-5	7.11	11520	-0.251	0.025	0.010	0.018	0.000000	0.000000	-1822.37	1059.88
3	GUIDE	845676728	9.30	23023	-0.114	-0.070	0.119	0.189	52.877179	-27.664318	326.63	929.85
4	GUIDE	845676936	9.49	23015	-0.011	0.002	0.164	0.246	52.843773	-27.880153	-445.82	795.83
5	GUIDE	845683408	9.21	23014	0.190	-0.105	0.087	0.143	52.484531	-28.338862	-2366.19	1379.95
6	GUIDE	845816224	10.23	22856	0.076	0.054	0.152	0.240	53.578992	-28.631005	-2324.99	-2239.03
7	GUIDE	845808968	9.92	22998	-0.129	0.156	0.220	0.351	54.016598	-27.589085	1669.04	-2458.14

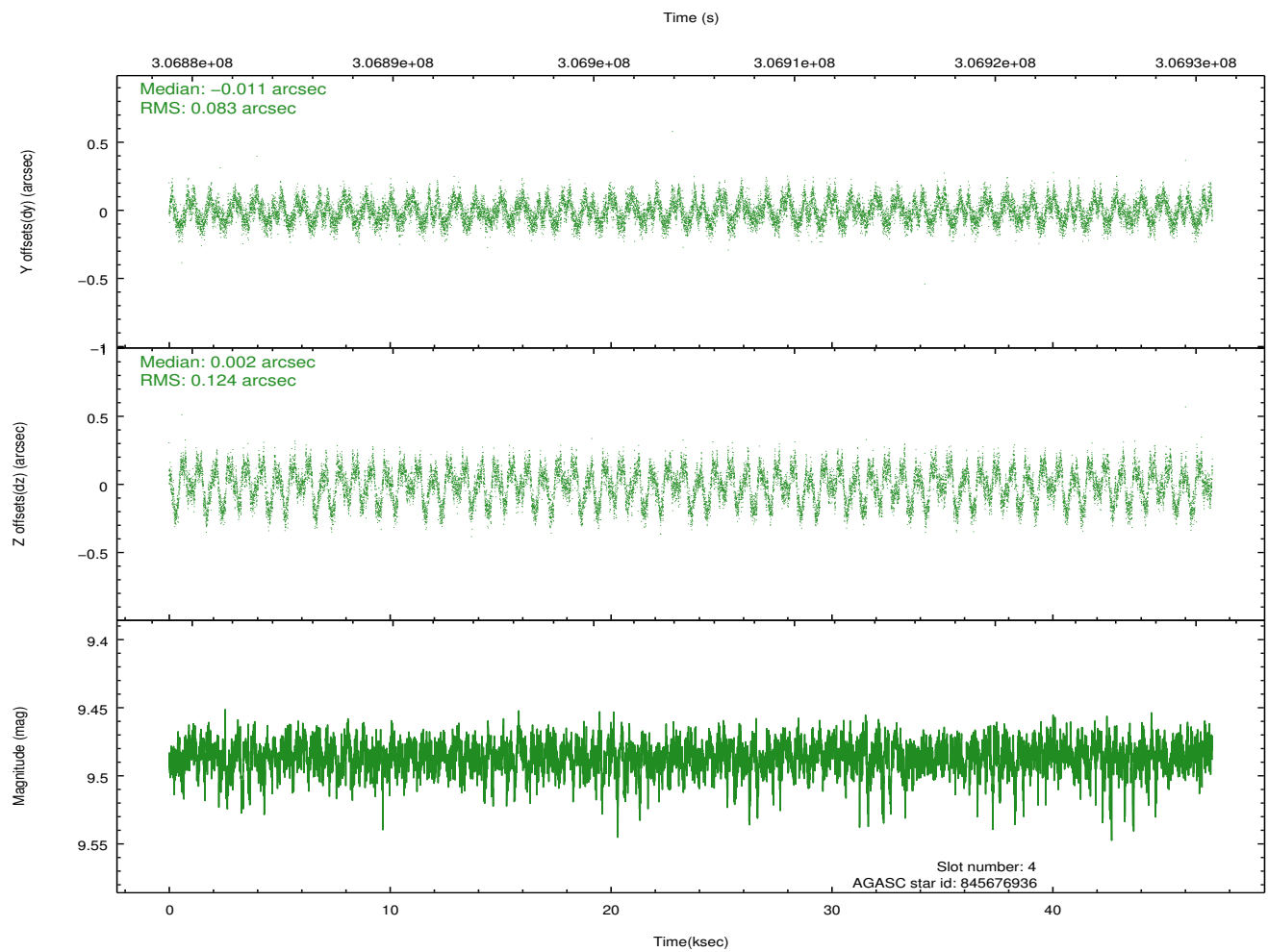
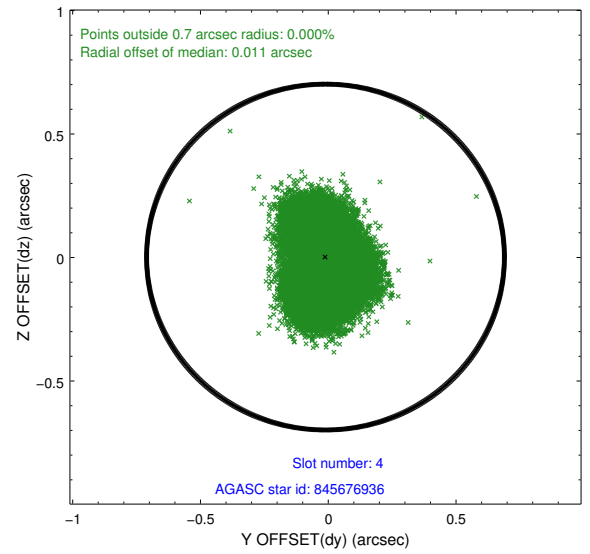
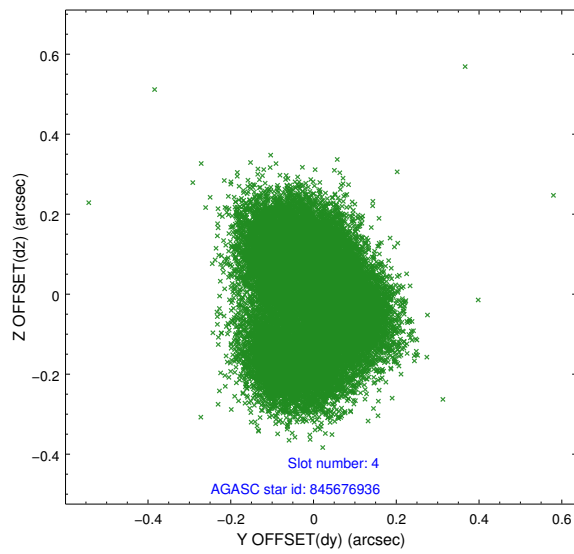
∞

2.4 Star Slots

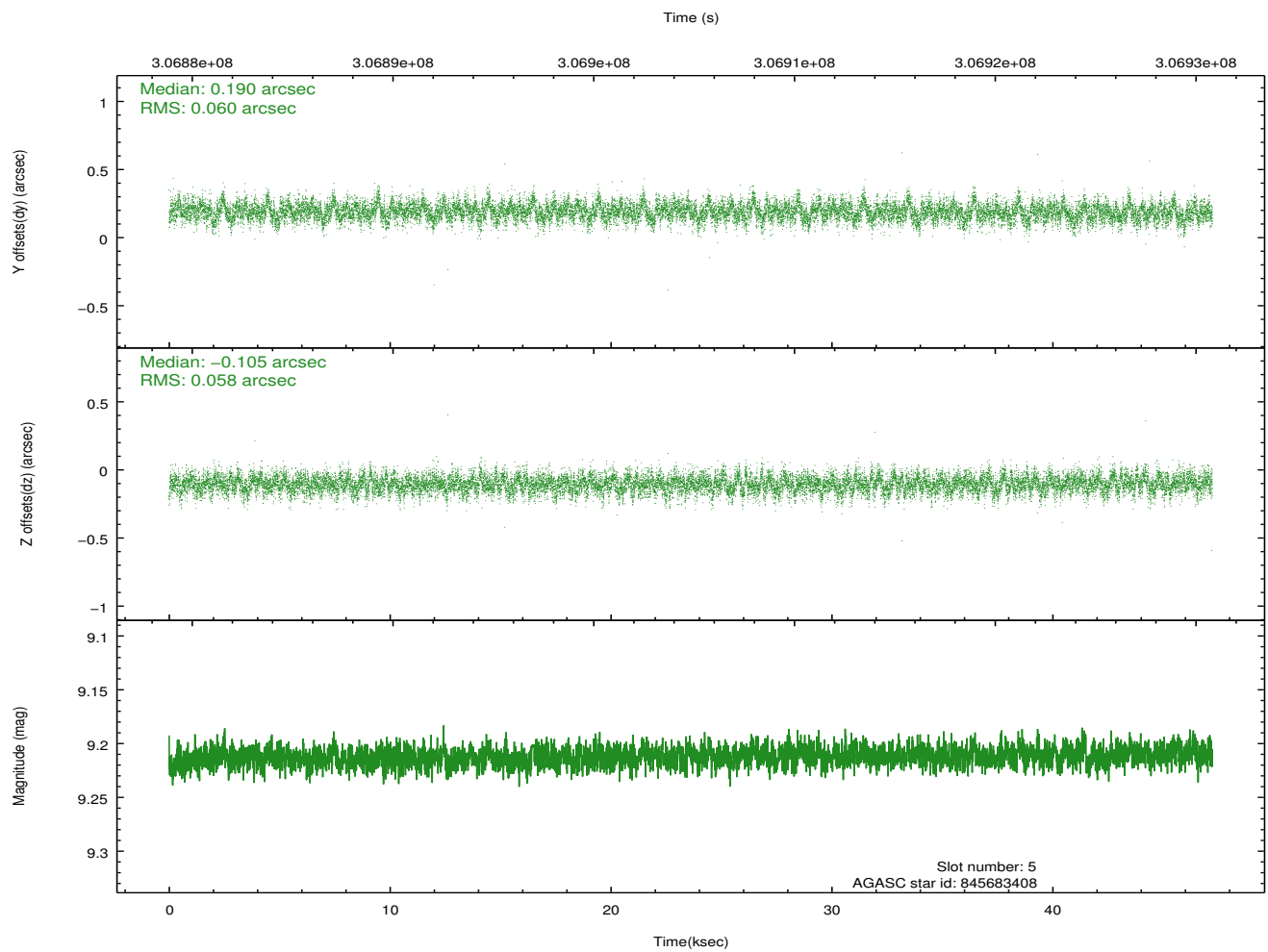
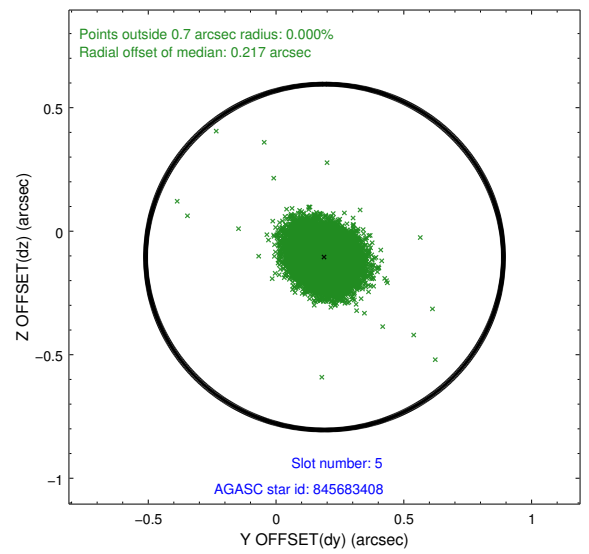
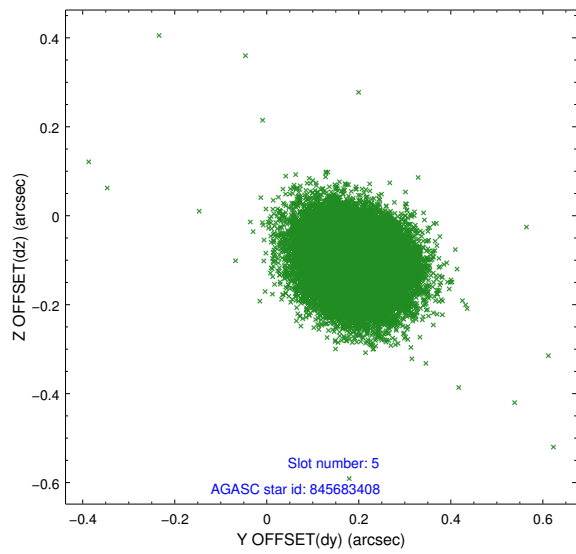
2.4.1 Slot 3



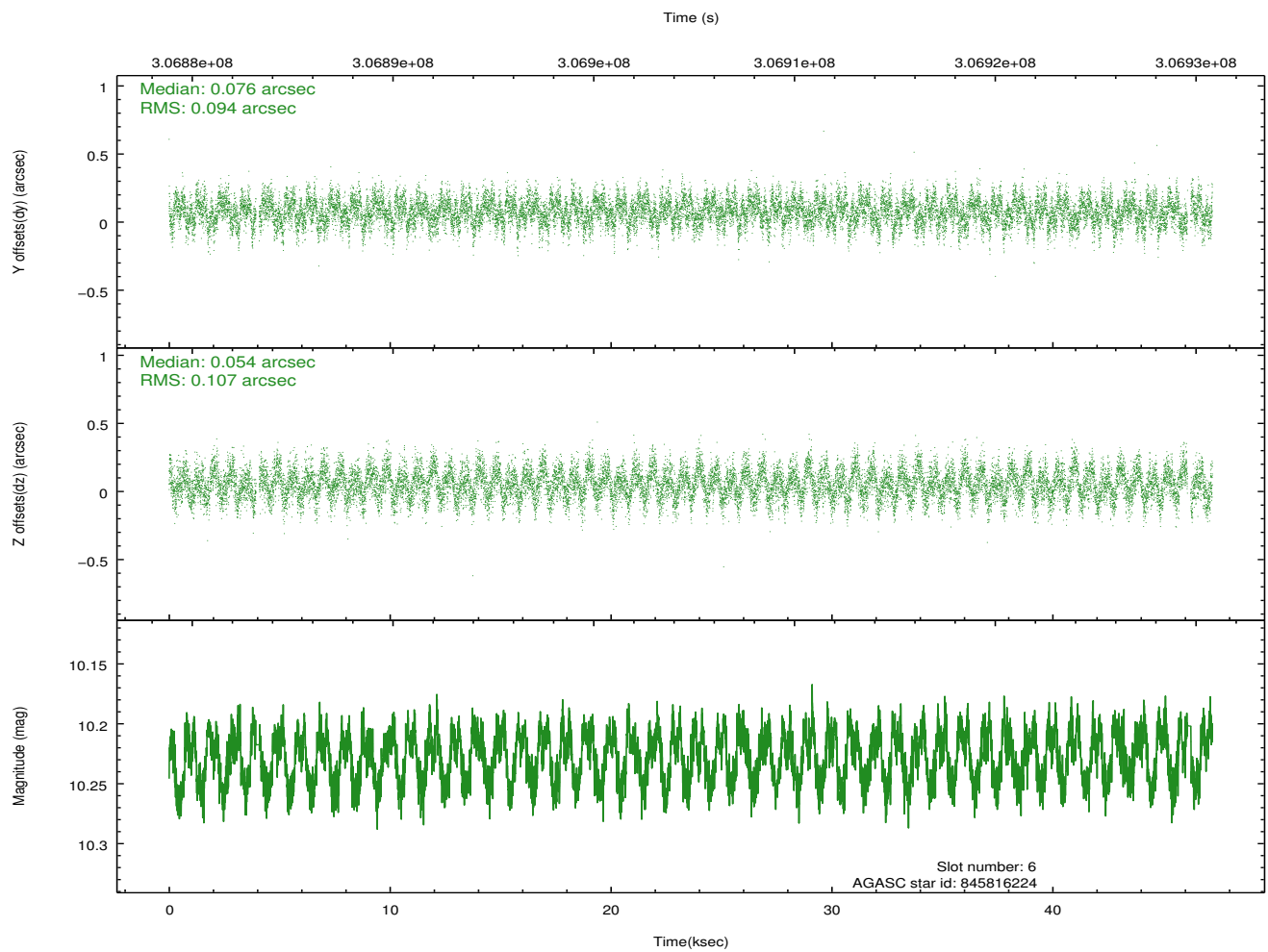
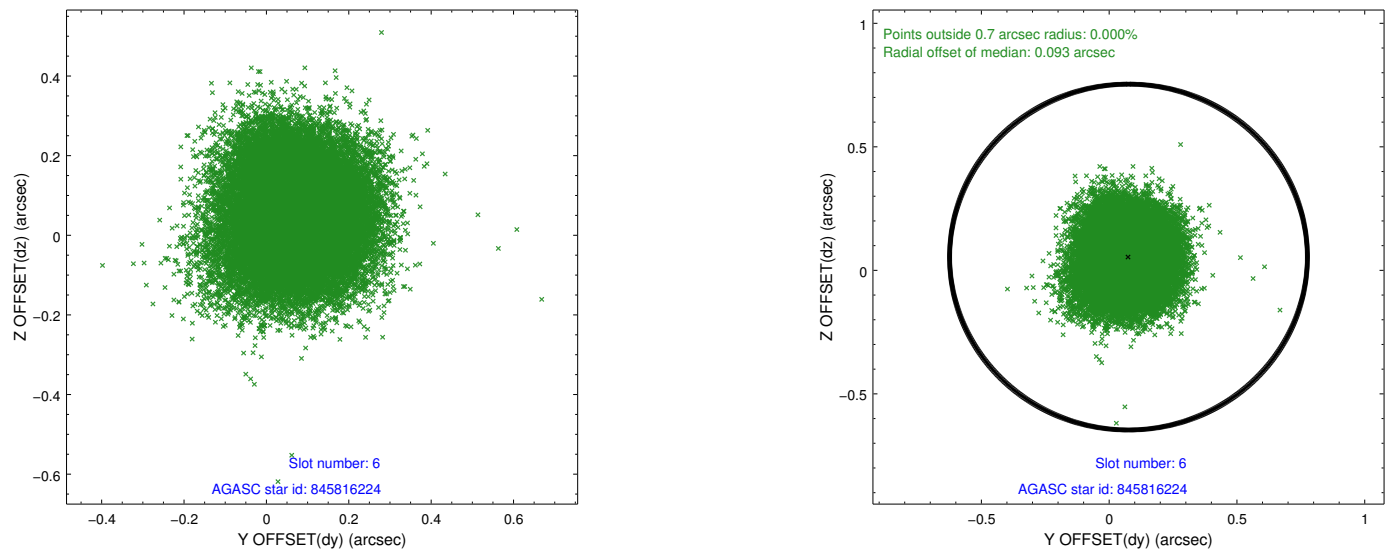
2.4.2 Slot 4



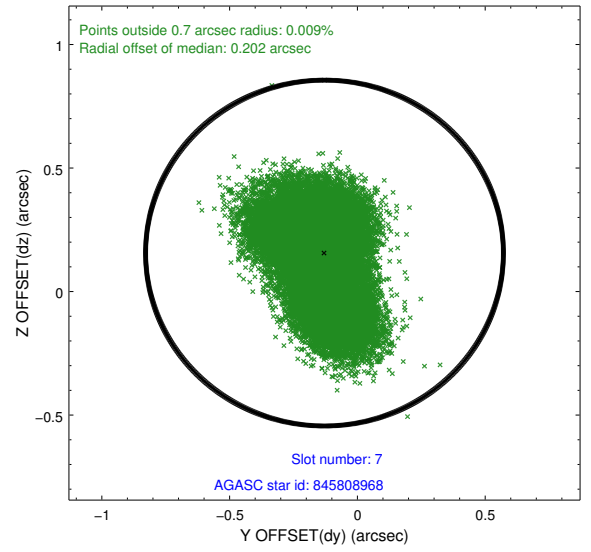
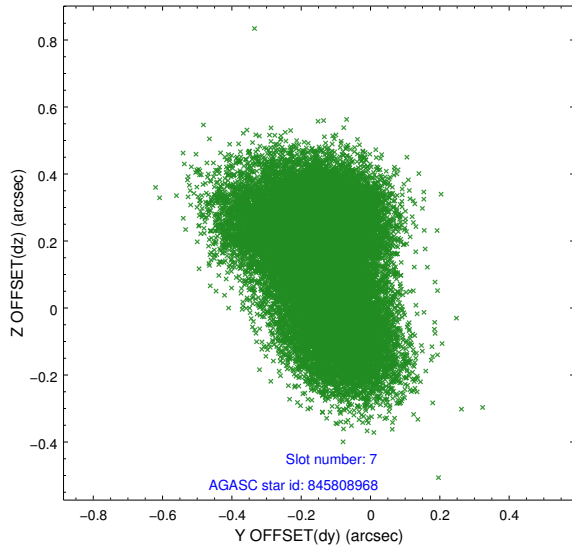
2.4.3 Slot 5



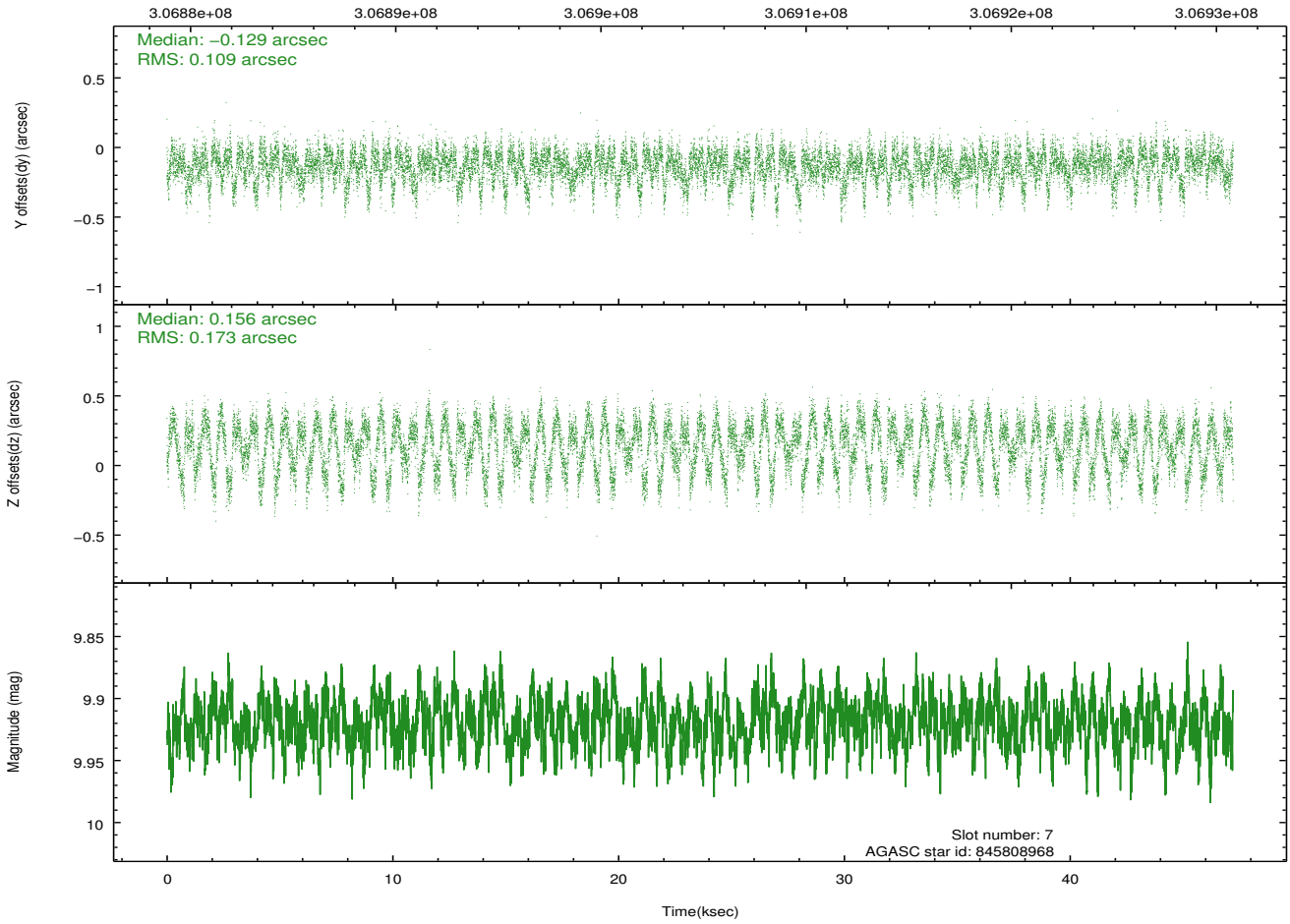
2.4.4 Slot 6



2.4.5 Slot 7

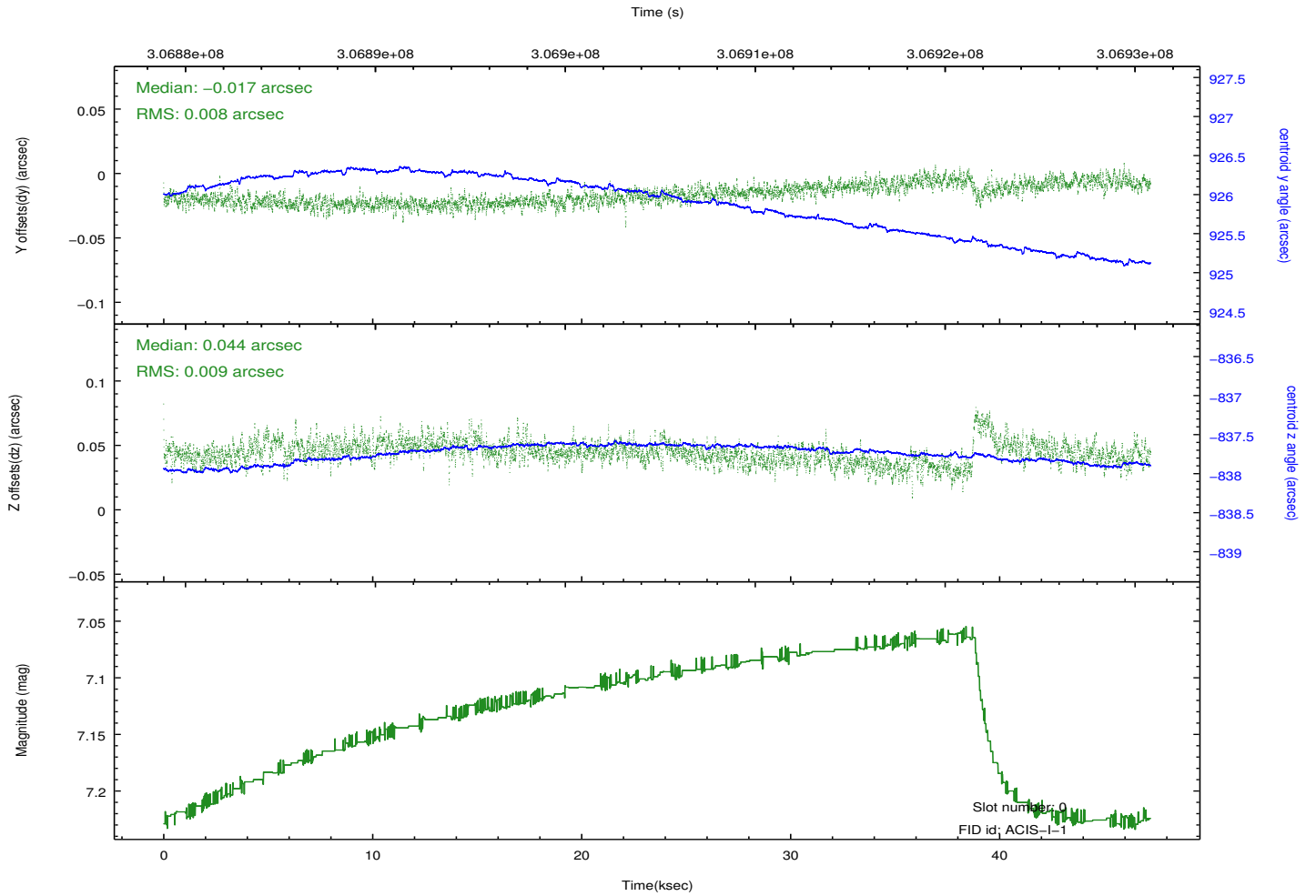
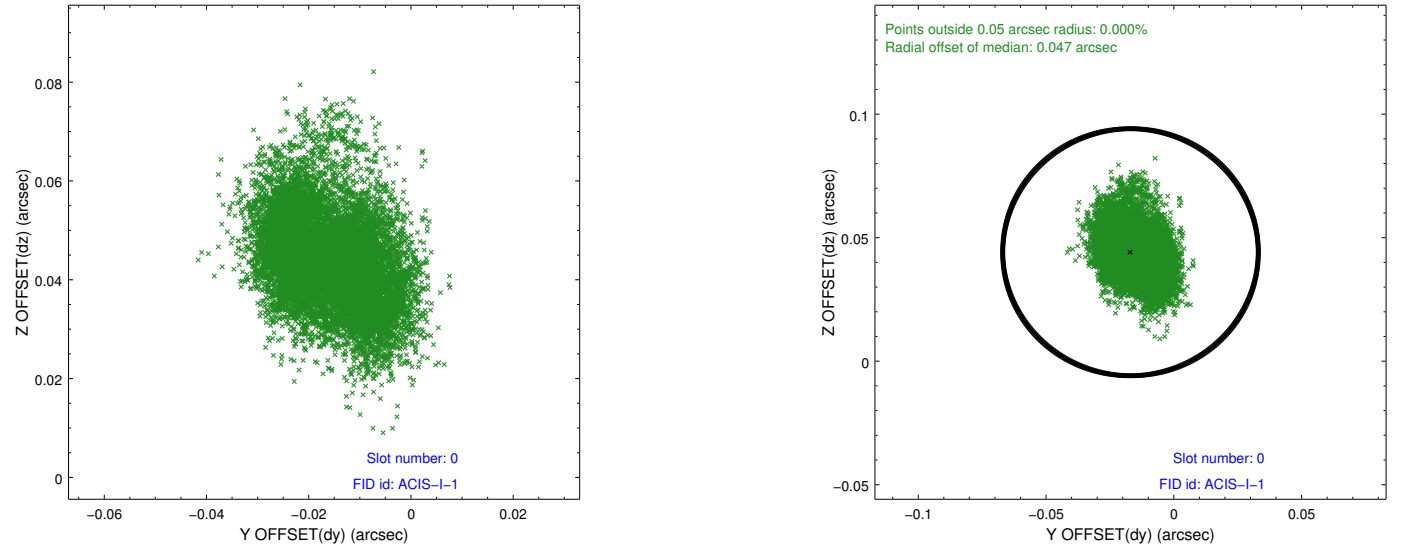


Time (s)

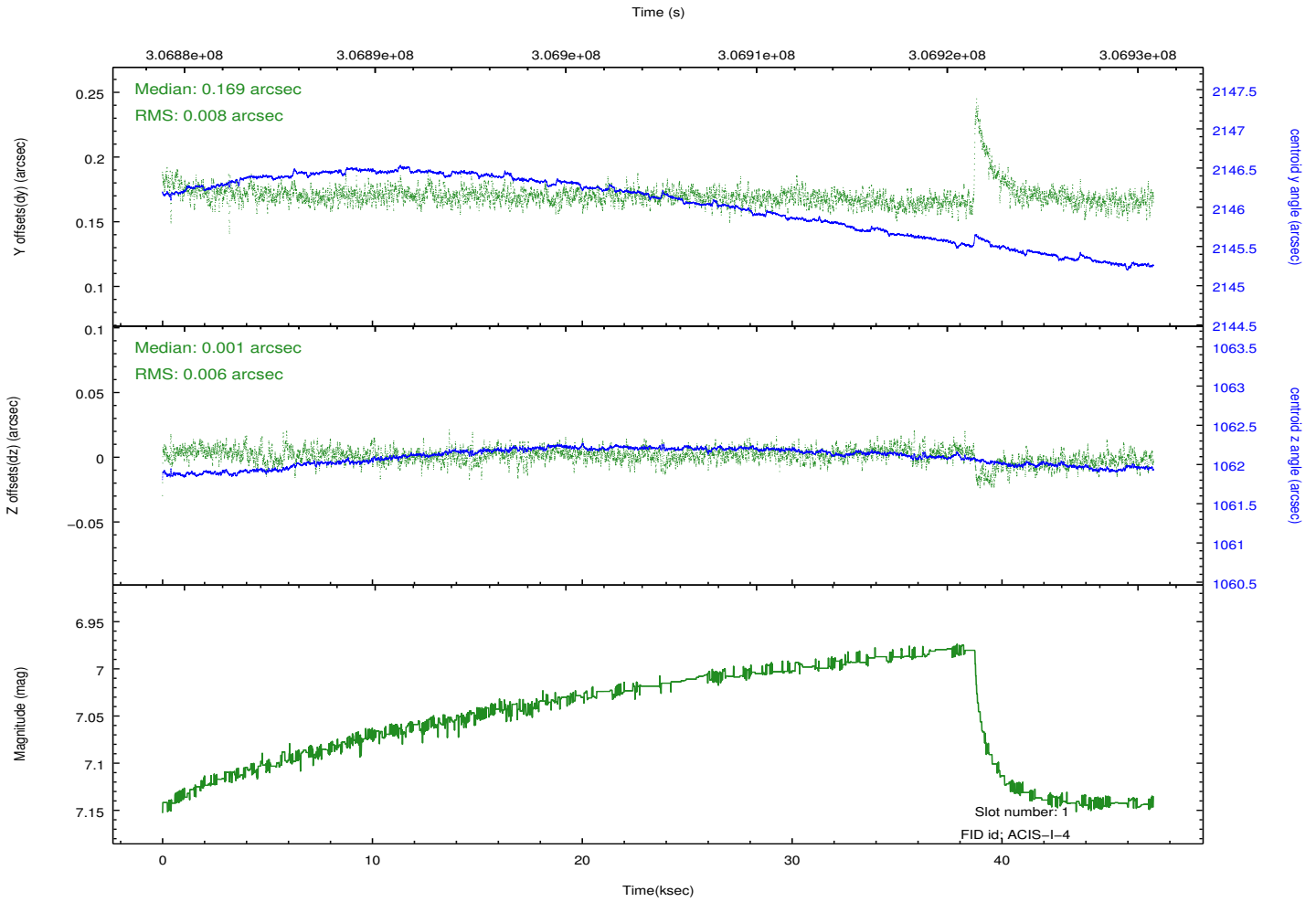
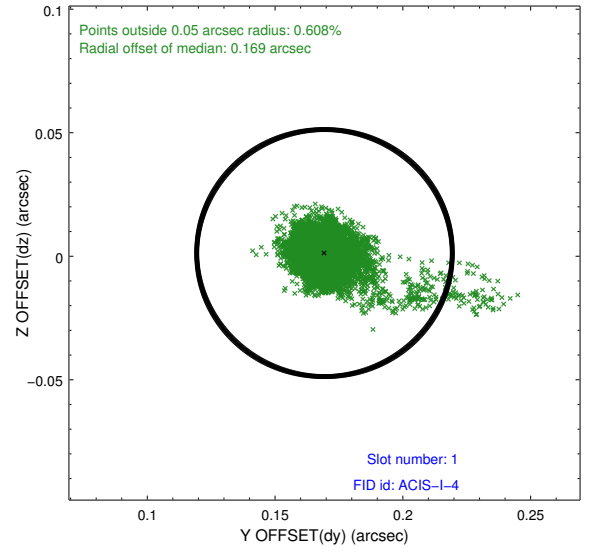
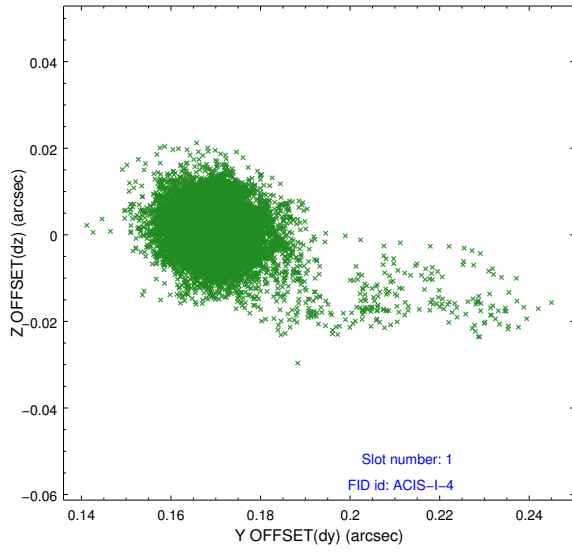


2.5 FID Slots

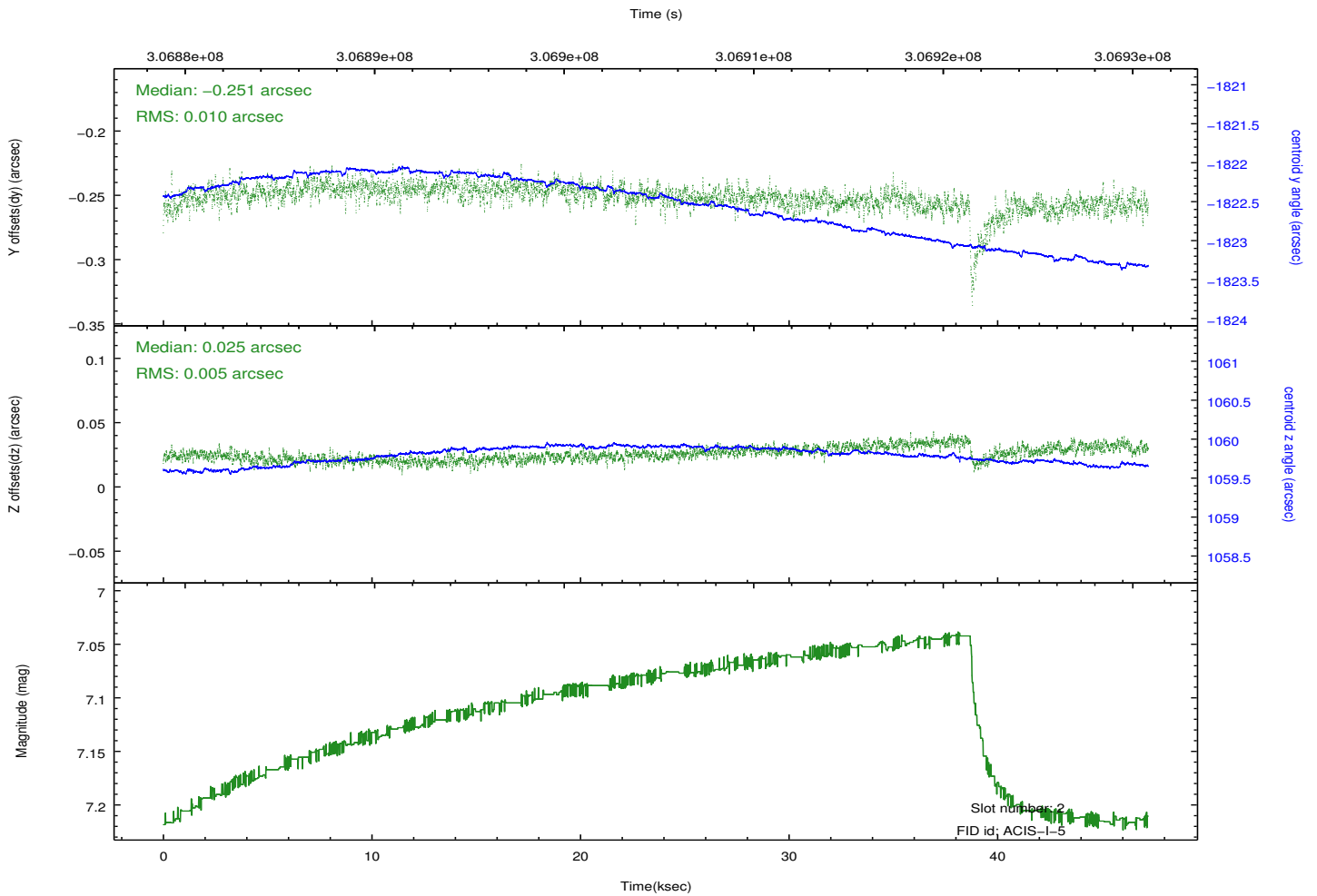
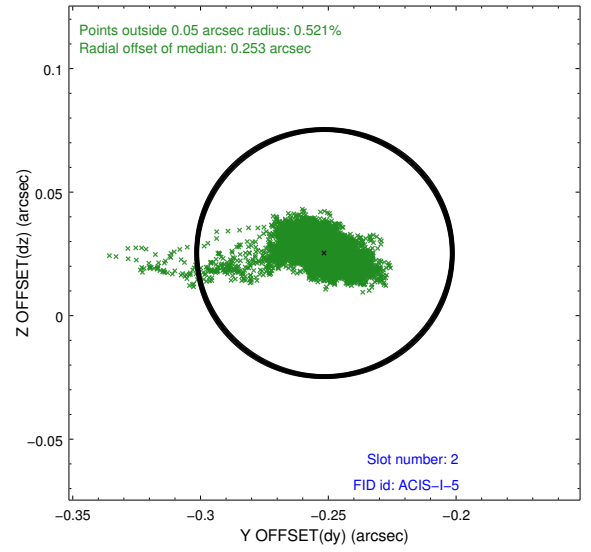
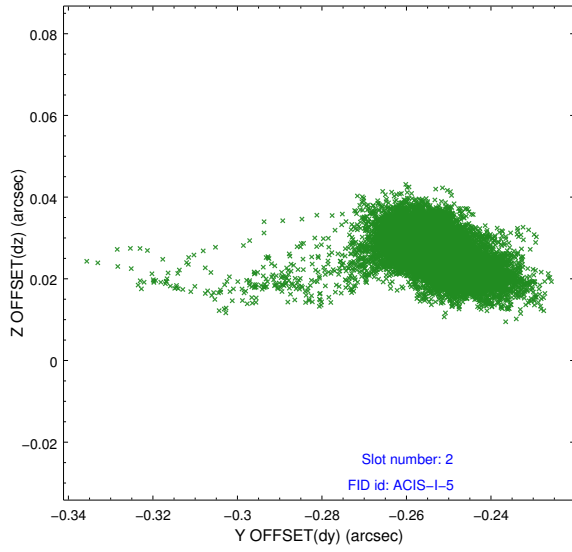
2.5.1 Slot 0



2.5.2 Slot 1



2.5.3 Slot 2



A Summary

A.1 Status

V&V Scientist	Joy Nichols
V&V Date (YYYY-MM-DD)	2012.05.31
V&V Edition	1
V&V Disposition and Status	OK
V&V Charge Time	47.0456003

A.2 Comments

The detector housing of ACIS was cooled during this observation as a test. The cooler temperatures caused migration of the fid light positions as a function of the temperature. The aspect pipeline now does a fid light correction for the ACIS detector housing temperature variation and the aspect solution is acceptable.