

V&V Reference Report

L2 ASCDS Version : 8.4.4

Observation 9853 - L2 Version 2
Chandra X-Ray Center

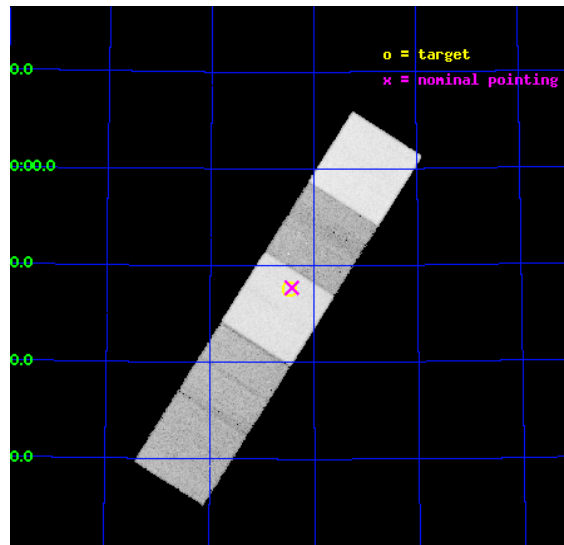
L2 Processing Date : May 14 2012

Contents

1	Front	2
2	OBI	3
2.1	OBI	3
2.1.1	Images	3
2.1.2	Bias	3
2.1.3	Parameters	4
2.1.4	Events	4
2.2	Compared Parameters	5
2.3	Aspect	6
2.4	Star Slots	9
2.4.1	Slot 3	9
2.4.2	Slot 4	10
2.4.3	Slot 5	11
2.4.4	Slot 6	12
2.4.5	Slot 7	13
2.5	FID Slots	14
2.5.1	Slot 0	14
2.5.2	Slot 1	15
2.5.3	Slot 2	16
A	Summary	17
A.1	Status	17
A.2	Comments	17

1 Front

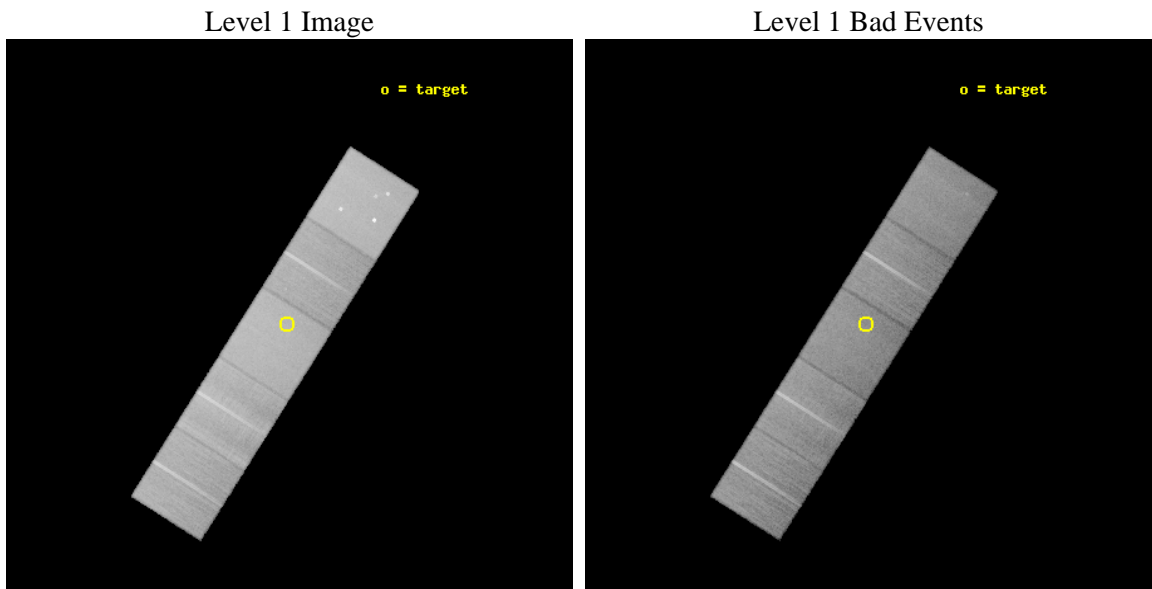
seq_num	501017	Sequence number
obs_id	9853	Observation id
title	An Unexpected Re-Brightening in SHB 080503: Afterglow or mini-Supernova	Proposal title
observer	Professor Nathaniel Butler	Principal investigator
object	SHB 080503	Source name
dtcycle	0	
cycle	P	events from which exps? Prim/Second/Both
ra_targ	286.62	Observer's specified target RA [deg]
dec_targ	68.793194	Observer's specified target Dec [deg]
ra_nom	286.60798920458	Nominal RA [deg]
dec_nom	68.795312827529	Nominal Dec [deg]
roll_nom	122.34090611315	Nominal Roll [deg]
revision	2	Processing version of data
ontime	30175.400232077	Sum of GTIs [s]
livetime	29781.136413238	Livetime [s]
ontime5	30175.400232077	Sum of GTIs [s]
ontime6	30175.400232077	Sum of GTIs [s]
ontime7	30175.400232077	Sum of GTIs [s]
ontime8	30169.11827141	Sum of GTIs [s]
ontime9	30172.259261668	Sum of GTIs [s]
l2events	447412	Number of level 2 events



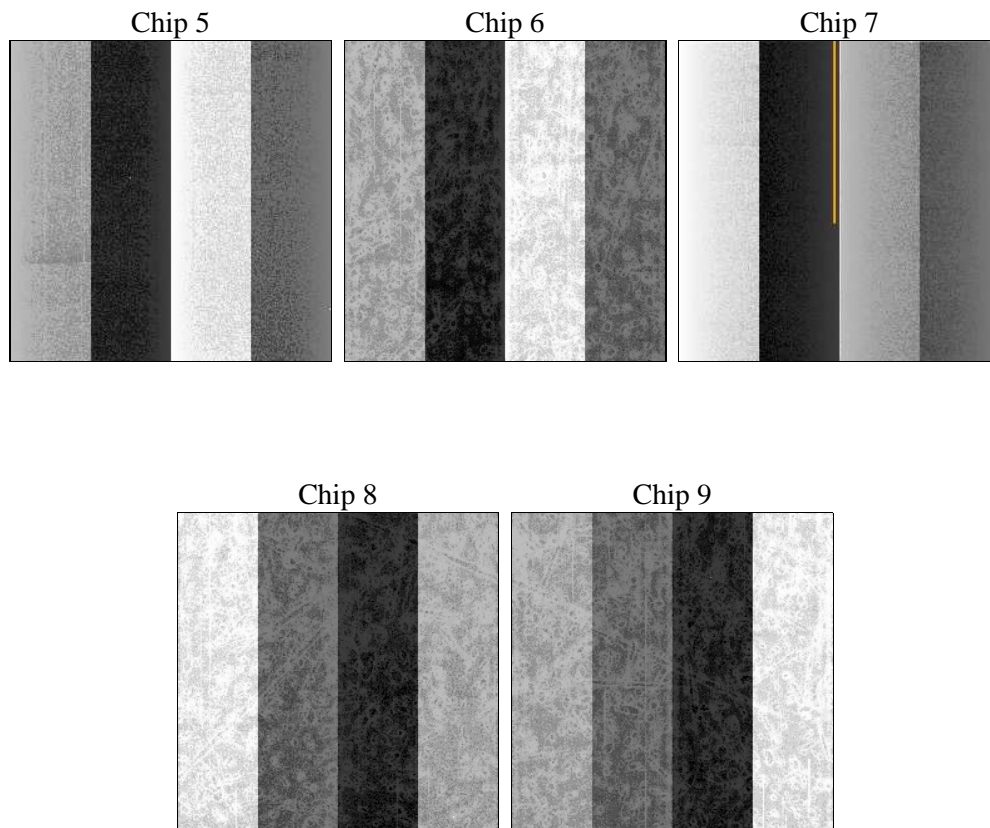
2 OBI

2.1 OBI

2.1.1 Images



2.1.2 Bias



2.1.3 Parameters

obi_num	0	Obi number	sched_exp_time	30000.000000	[s] Scheduled observation exposure time
ascdsver	8.4.4	Processing system revision	ontime	30175.400232077	Sum of GTIs [s]
caldbver	4.4.9	 	ontime5	30175.400232077	Sum of GTIs [s]
date	2012-05-14T03:26:34	Date and time of file creation	ontime6	30175.400232077	Sum of GTIs [s]
revision	2	Processing version of data	ontime7	30175.400232077	Sum of GTIs [s]
			ontime8	30169.11827141	Sum of GTIs [s]
			ontime9	30172.259261668	Sum of GTIs [s]
			l1events	1793029	Number of level 1 events

2.1.4 Events

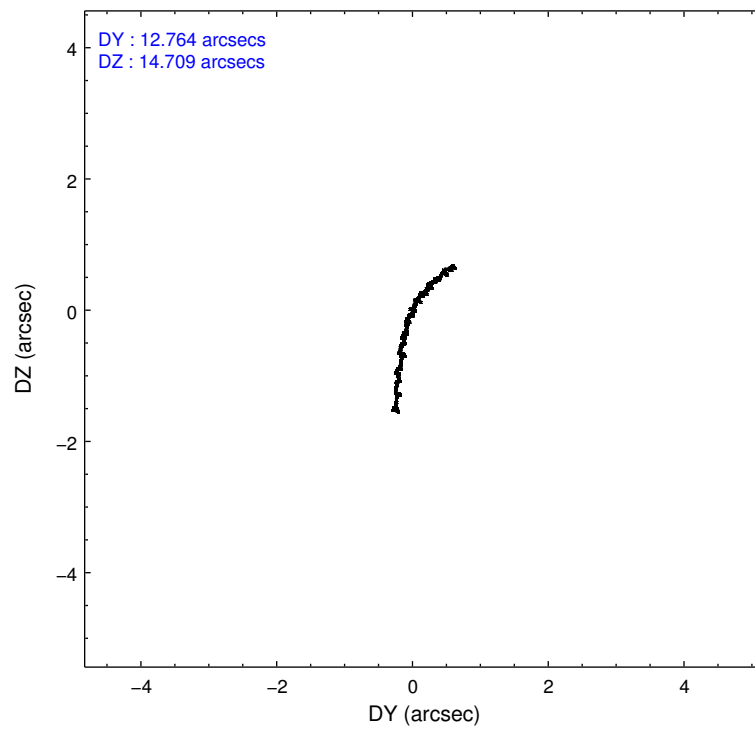
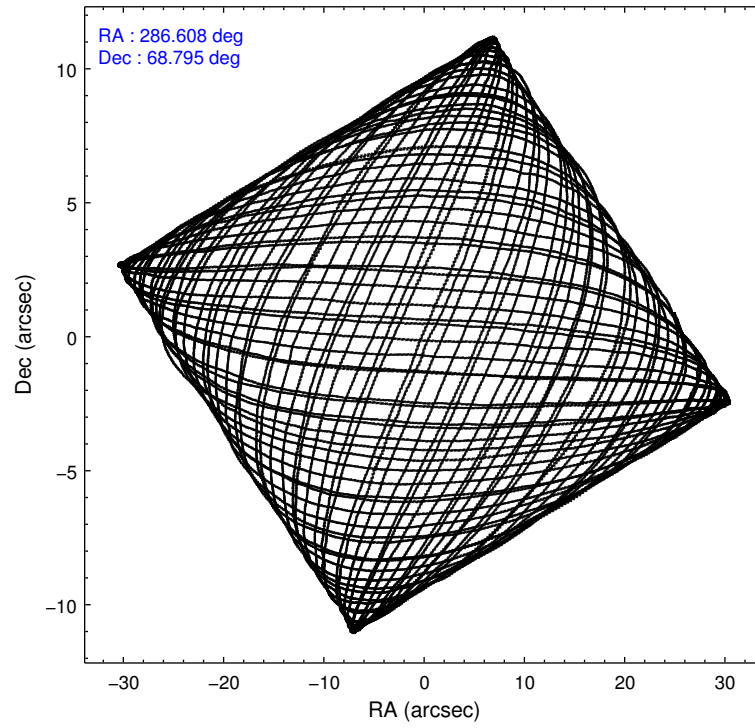
	ccd 5	ccd 6	ccd 7	ccd 8	ccd 9
level 1 events	448612	289223	396496	367205	291493
rejected events	241046	254608	233904	282433	255520
rejected %	53%	88%	58%	76%	87%

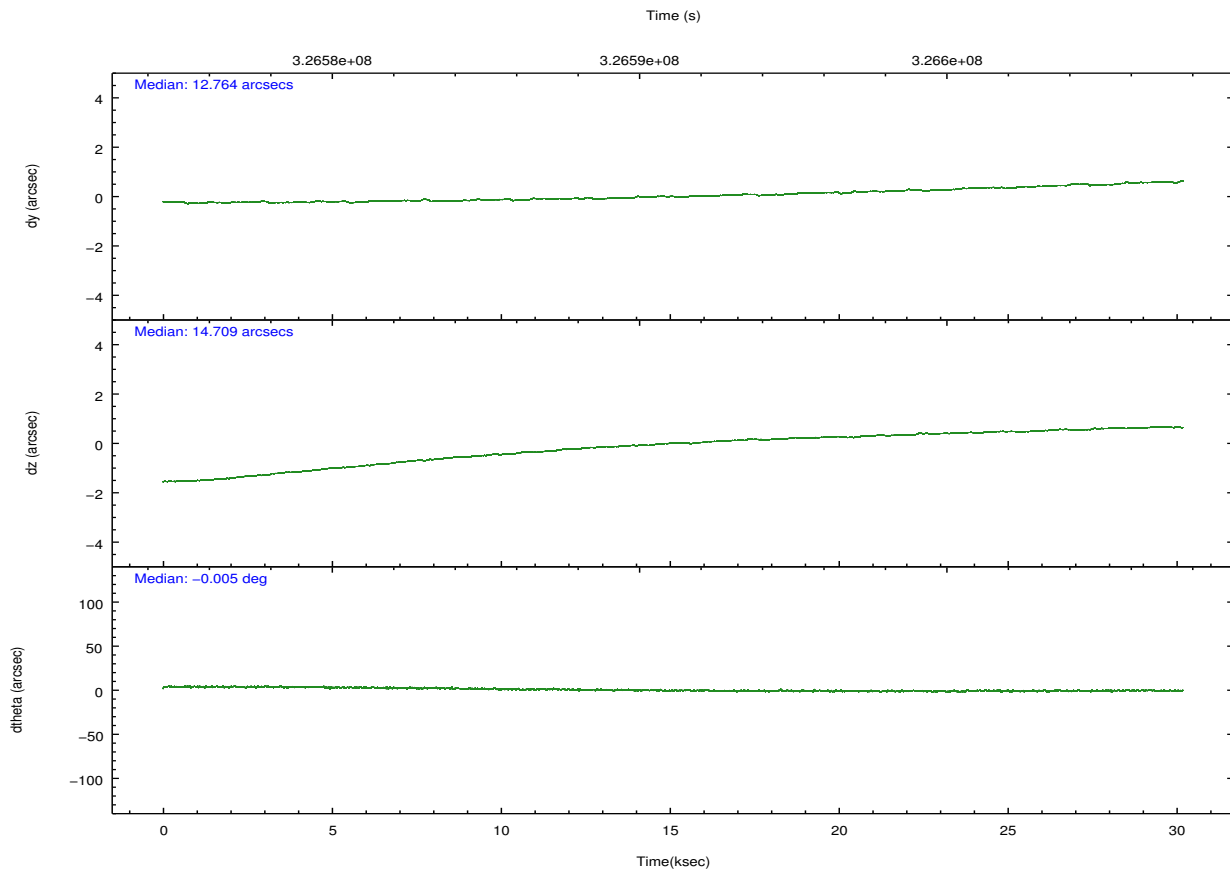
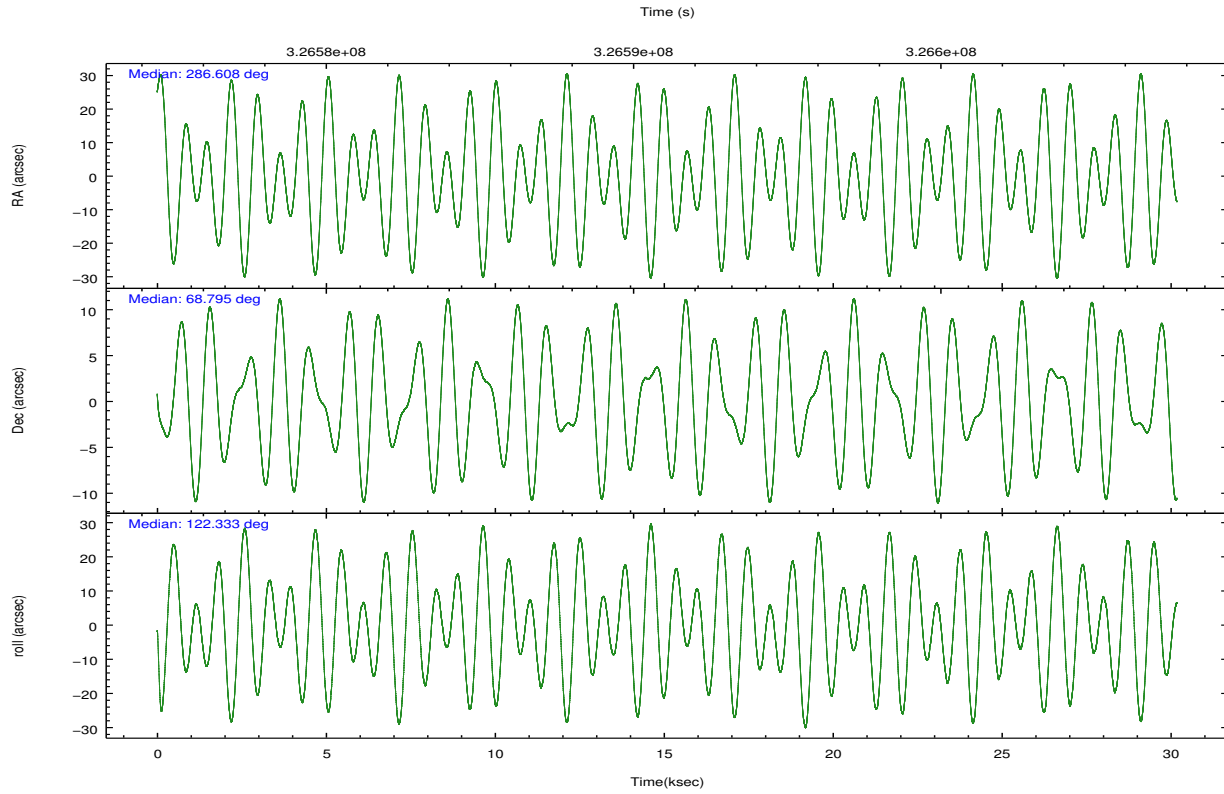
	ccd 5	ccd 6	ccd 7	ccd 8	ccd 9
grade 0 events	24286	13514	13976	26568	14808
	5%	4%	3%	7%	5%
grade 1 events	904	167	413	309	181
	0%	0%	0%	0%	0%
grade 2 events	61371	7830	33087	18978	7533
	13%	2%	8%	5%	2%
grade 3 events	7344	3271	13565	9117	3484
	1%	1%	3%	2%	1%
grade 4 events	7052	3148	13392	8465	3291
	1%	1%	3%	2%	1%
grade 5 events	31596	13742	37296	18146	14917
	7%	4%	9%	4%	5%
grade 6 events	108545	7006	89345	22039	7029
	24%	2%	22%	6%	2%
grade 7 events	207514	240545	195422	263583	240250
	46%	83%	49%	71%	82%

2.2 Compared Parameters

Parameter	Planned	Actual	Parameter	Planned	Actual
Instrument	ACIS	ACIS	Obspar format version number	7	7
Detector	ACIS-56789	ACIS-56789	Obspar file type	PREDICTED	ACTUAL
Grating	NONE	NONE	Obspar update status	NONE	UPDATED
Data mode	VFAINT	VFAINT	CCD I0 on	N	N
Observation mode	POINTING	POINTING	CCD I1 on	N	N
[deg] Pointing RA	286.675348	286.6079892045831	CCD I2 on	N	N
[deg] Pointing Dec	68.782937	68.79531282752856	CCD I3 on	N	N
[deg] Pointing Roll	122.121475	122.3409061131511	CCD S0 on	N	N
[mm] SIM focus pos	-0.684267	-0.6828225247311905	CCD S1 on	O1	Y
[mm] SIM defocus	0	0.001444936568705701	CCD S2 on	Y	Y
[mm] SIM translation stage pos	-190.132523	-190.1425803651734	CCD S3 on	Y	Y
[mm] SIM translation stage offset	0	0.01005778216563158	CCD S4 on	Y	Y
[s] Observation start time (MET)	326576173.184000	326575103.61443	CCD S5 on	O2	Y
Observation start date	2008-05-07T19:35:08	2008-05-07T19:18:23	Number of optional ACIS chips dropped	0	0
[s] Observation end time (MET)	326606173.184000	326606999.05348	On-chip summing requested	N	N
Observation end date	2008-05-08T03:55:08	2008-05-08T04:09:59	Subarray requested	NONE	NONE
Read mode	TIMED	TIMED	Alternating exposures requested	N	N
			[s] Primary exposure time	0.000000	3.1

2.3 Aspect



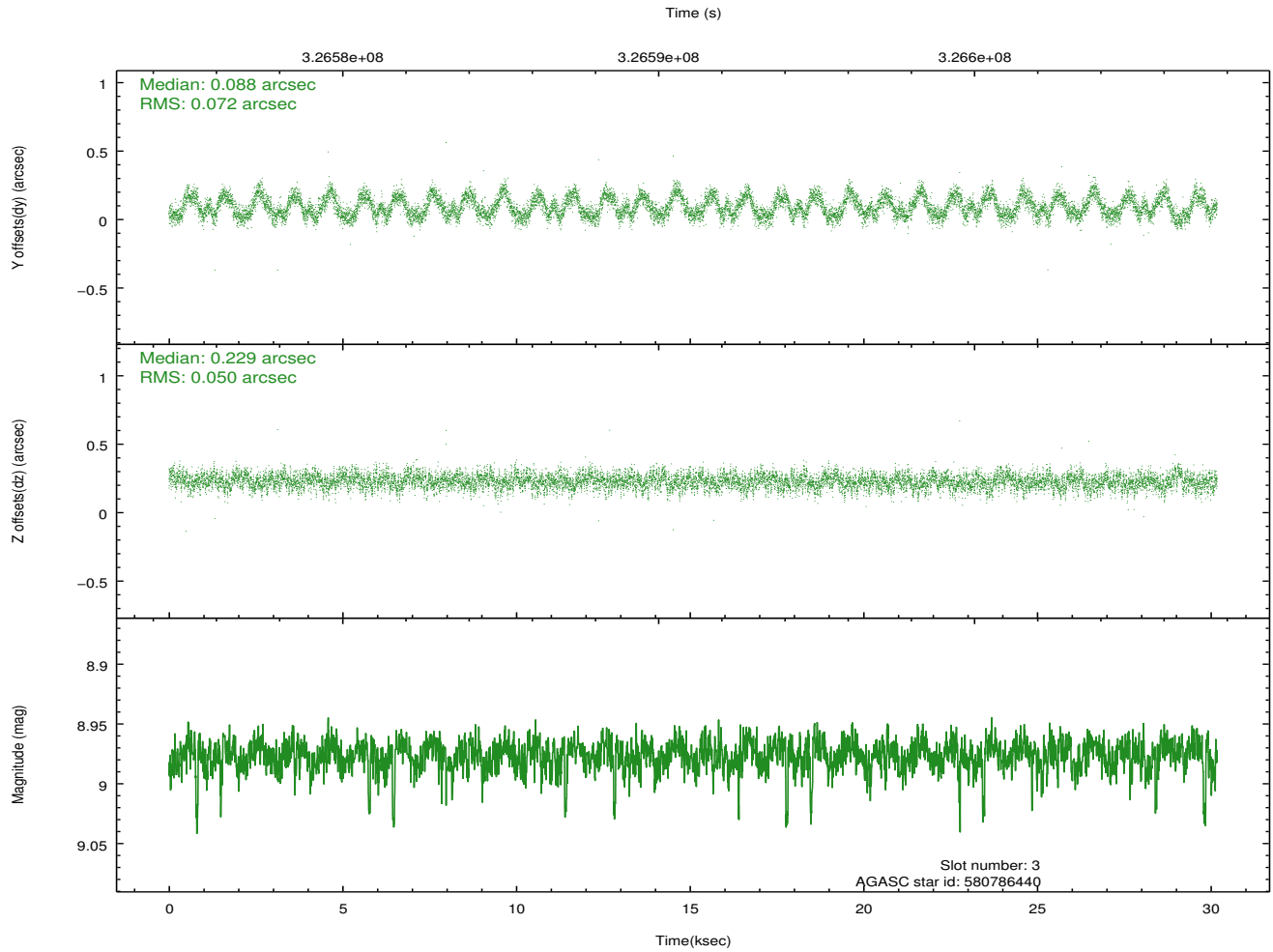
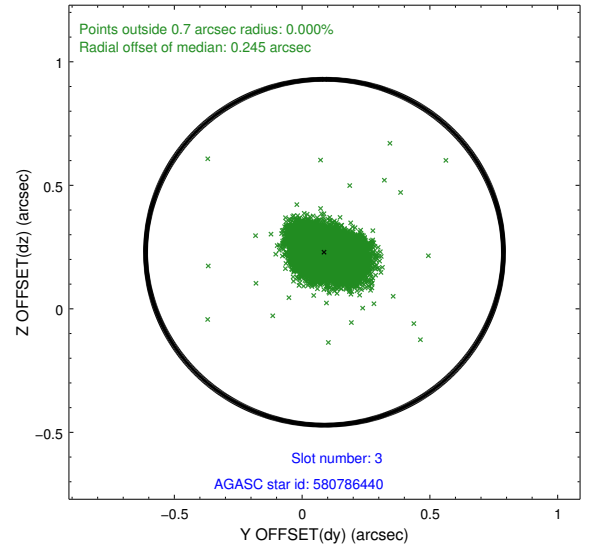
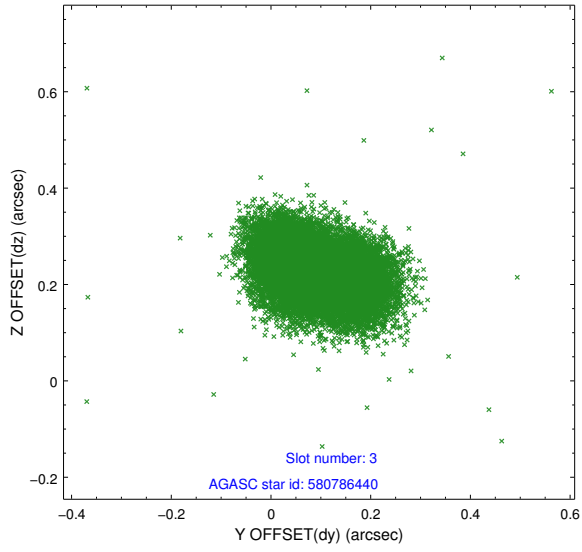


Slot Statistics

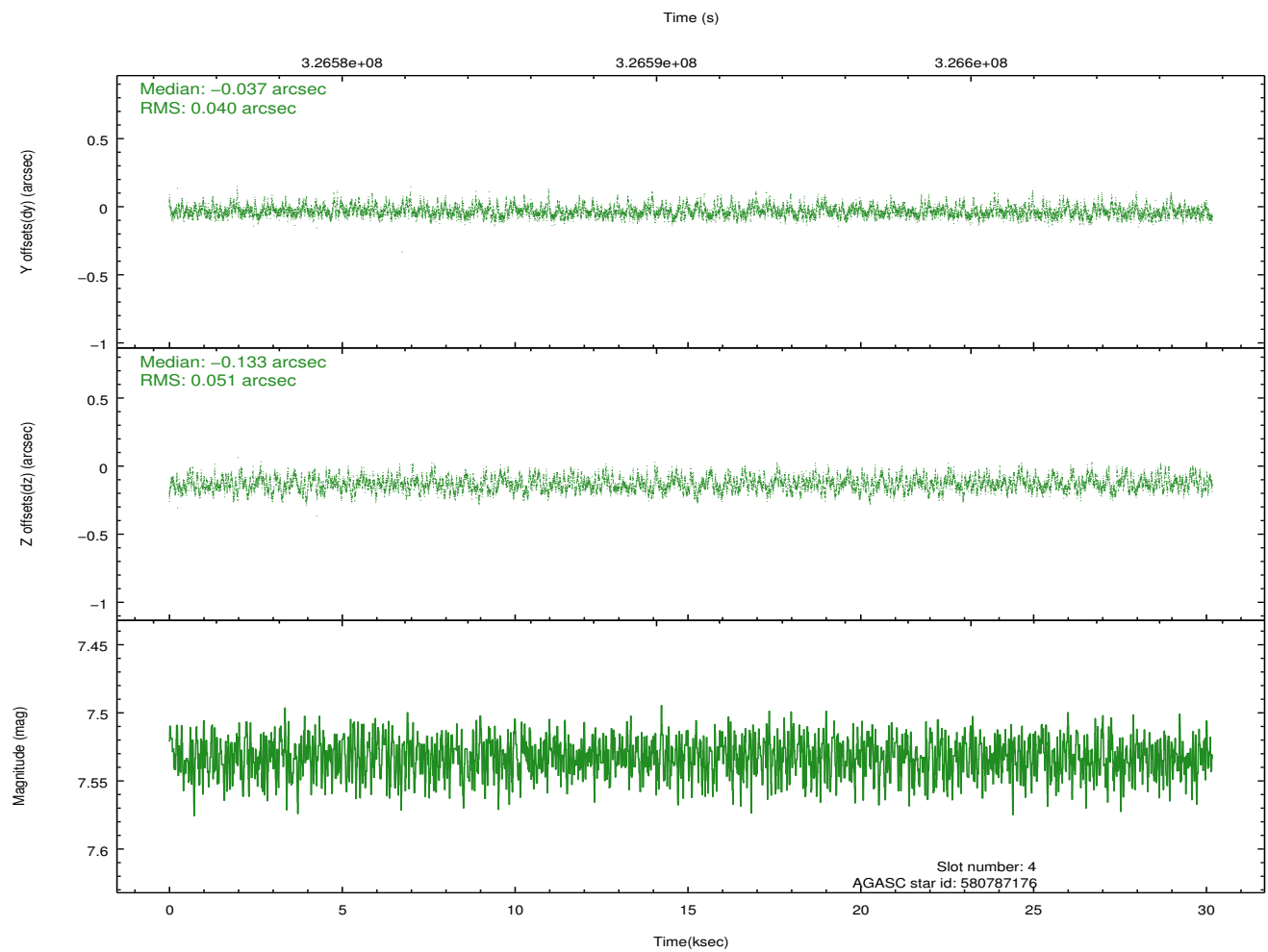
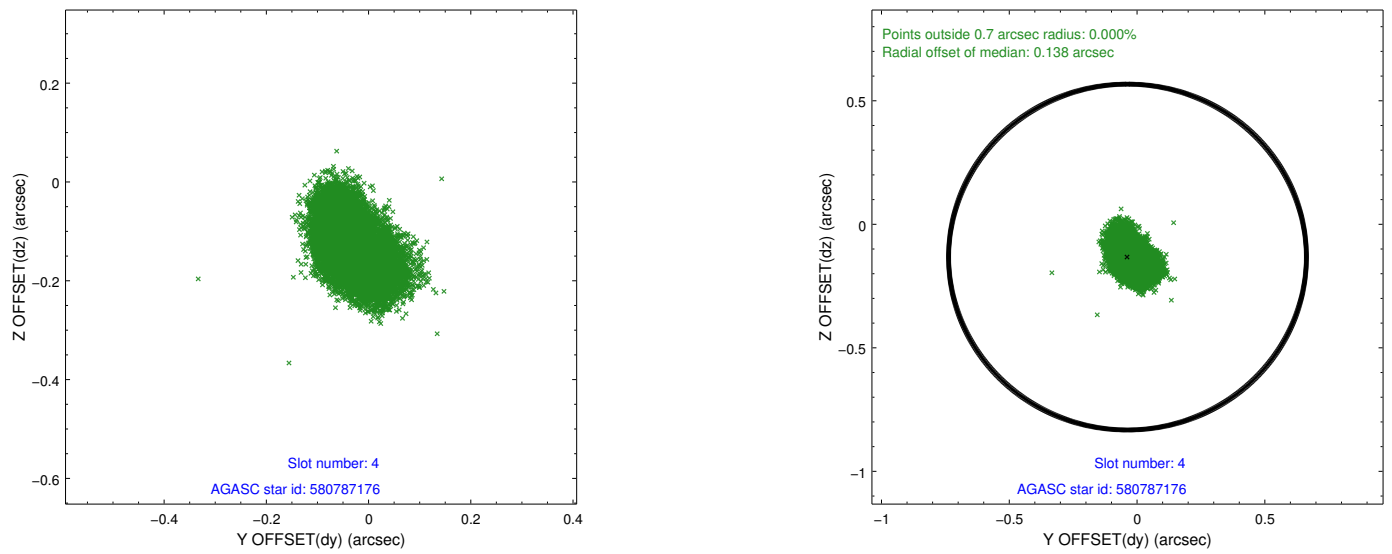
slot	status	id	mag	n_pts	med_dy	med_dz	dr1	dr2	ra	dec	mean_y	mean_z
0	FID	ACIS-S-2	6.89	7362	-0.004	-0.016	0.017	0.028	0.000000	0.000000	-765.71	-1735.86
1	FID	ACIS-S-5	7.01	7360	-0.069	0.001	0.020	0.030	0.000000	0.000000	-1818.95	166.04
2	FID	ACIS-S-6	7.11	7362	0.046	0.022	0.033	0.050	0.000000	0.000000	395.83	810.07
3	GUIDE	580786440	8.98	14708	0.088	0.229	0.093	0.147	287.304436	69.196667	837.84	-1474.79
4	GUIDE	580787176	7.53	14720	-0.037	-0.133	0.068	0.114	285.679069	68.325171	-682.32	1992.31
5	GUIDE	580789680	9.44	14706	0.175	-0.016	0.096	0.158	286.742402	68.176896	-1896.00	1084.52
6	GUIDE	580789800	7.62	14719	-0.172	0.036	0.055	0.087	287.412870	69.093082	446.77	-1398.72
7	GUIDE	580794080	8.00	14722	-0.065	-0.119	0.062	0.099	284.693780	68.950915	1909.26	1826.40

2.4 Star Slots

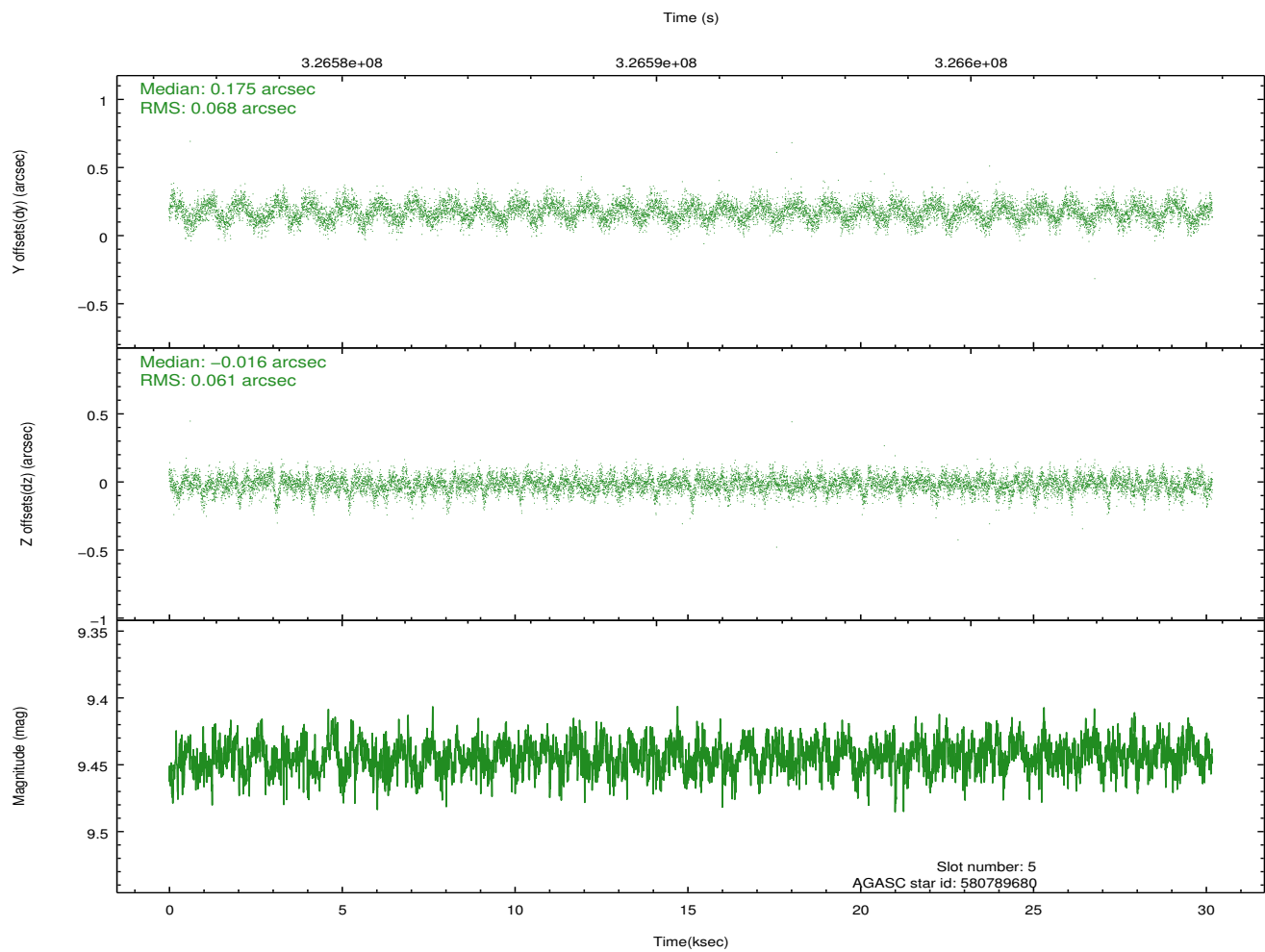
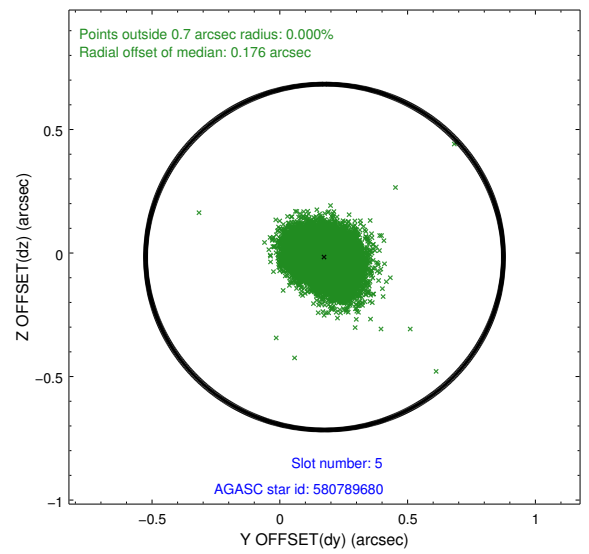
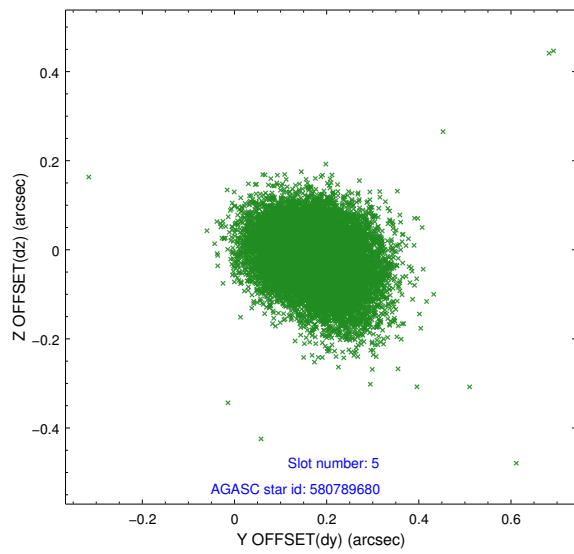
2.4.1 Slot 3



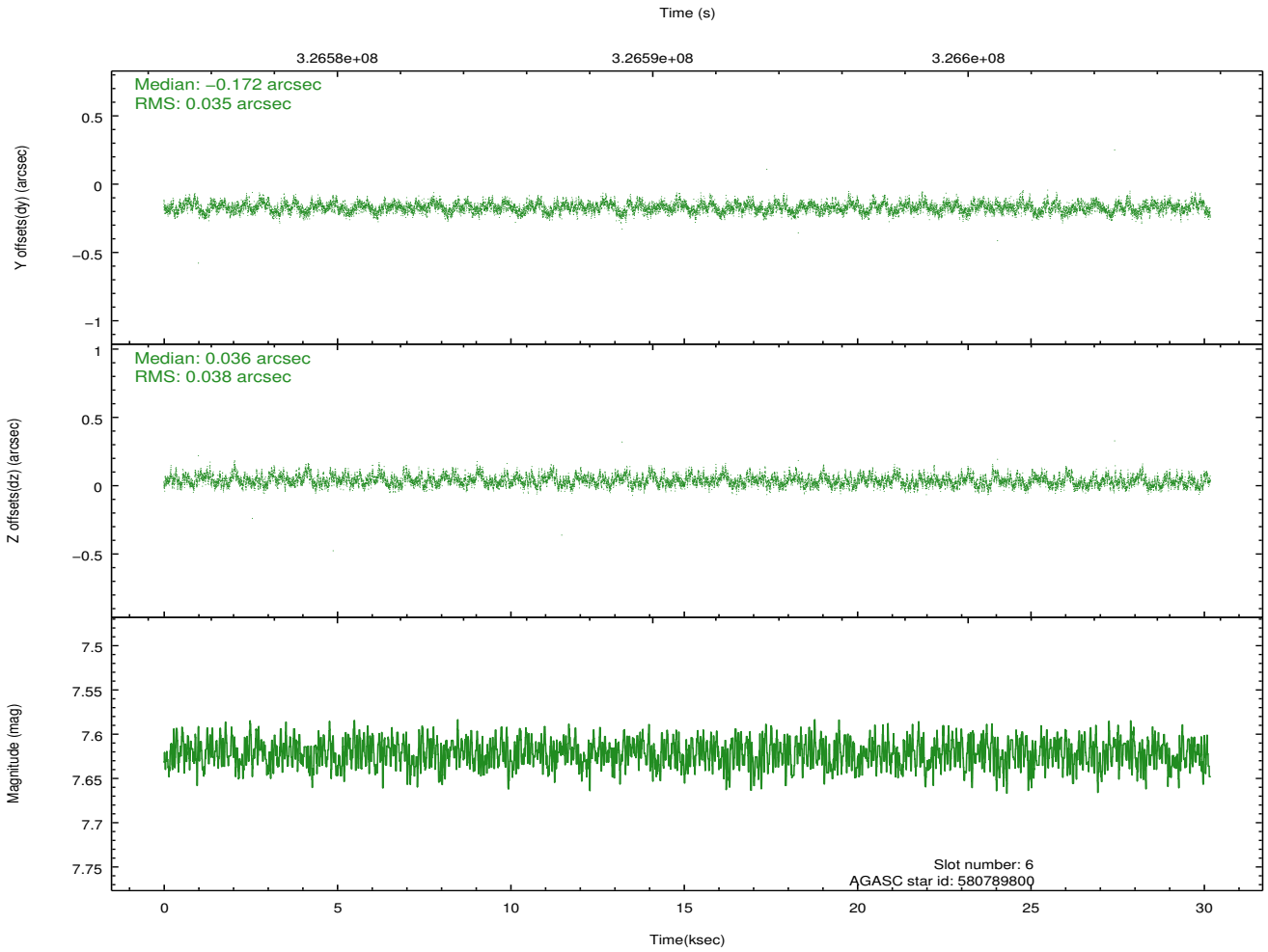
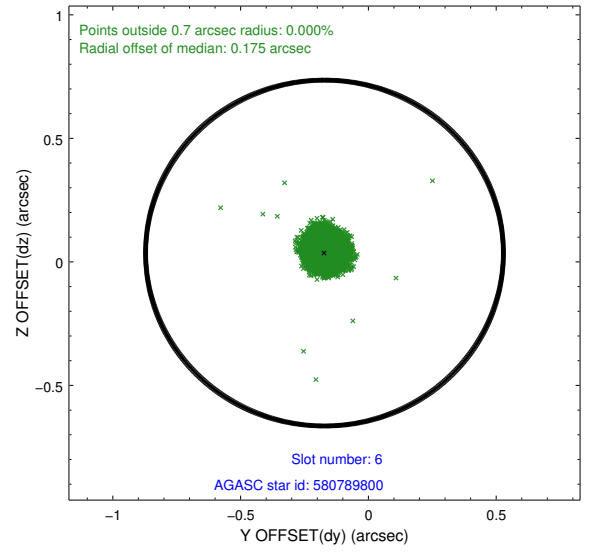
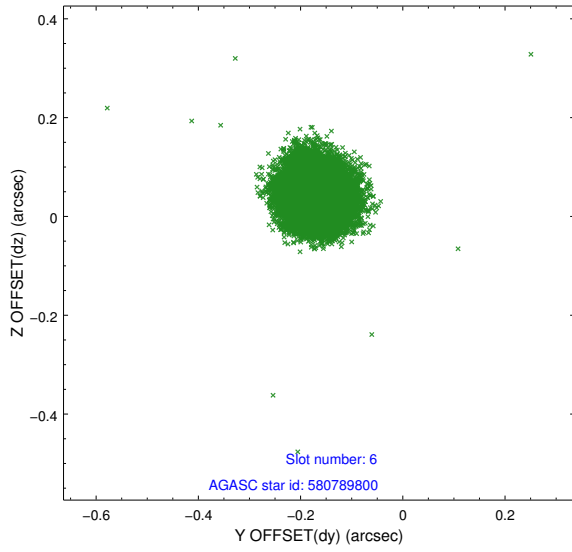
2.4.2 Slot 4



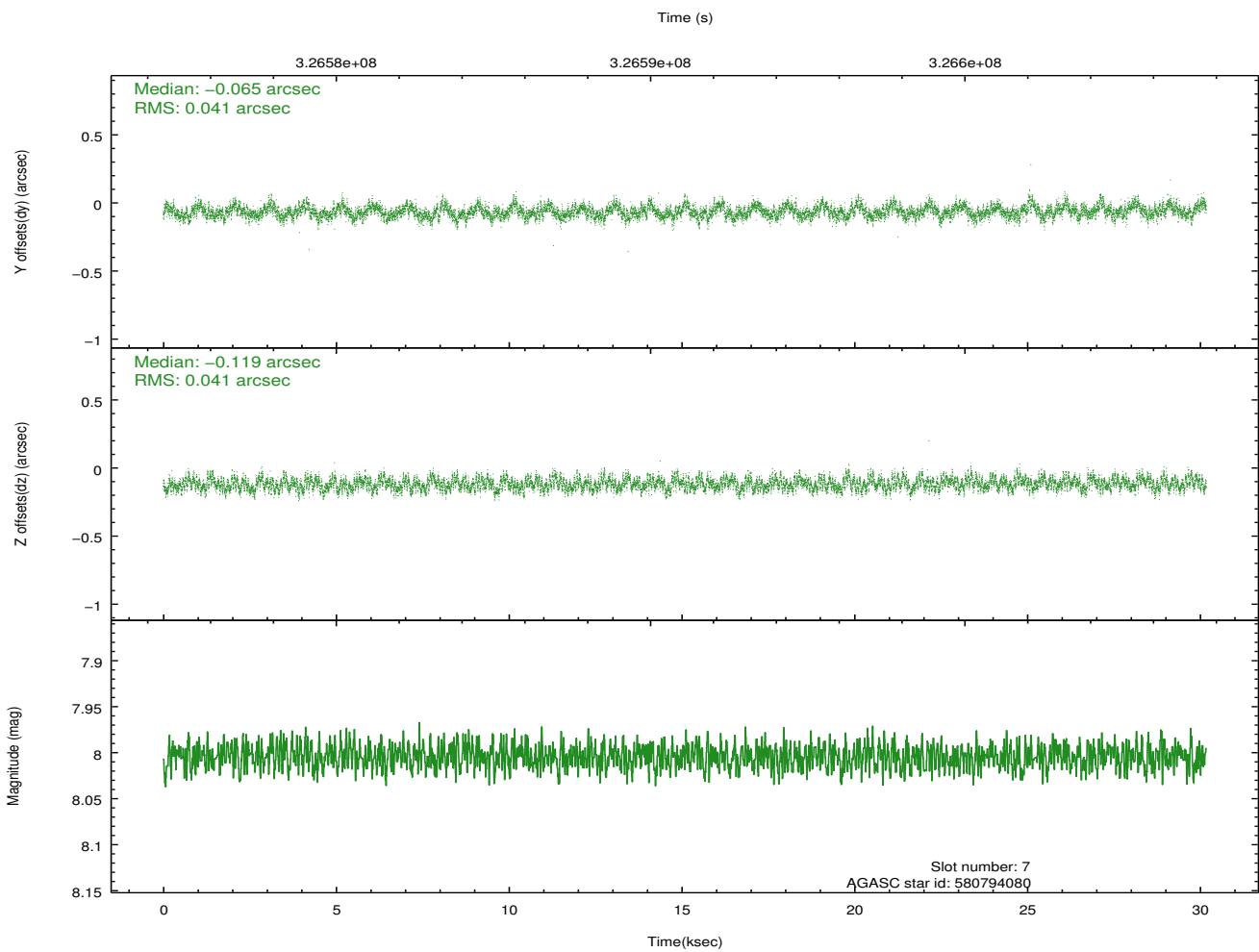
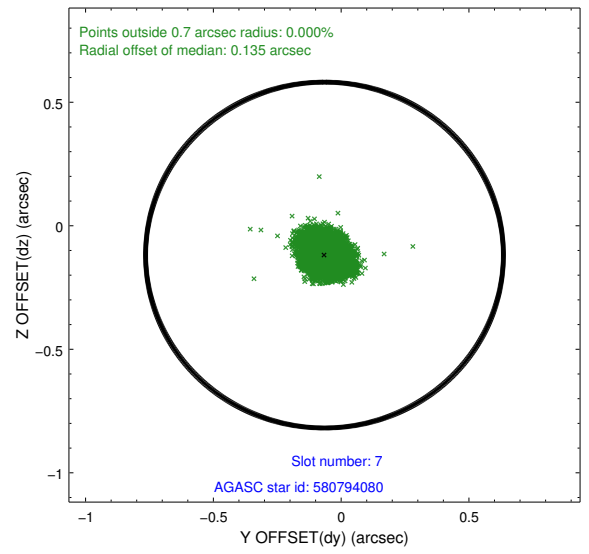
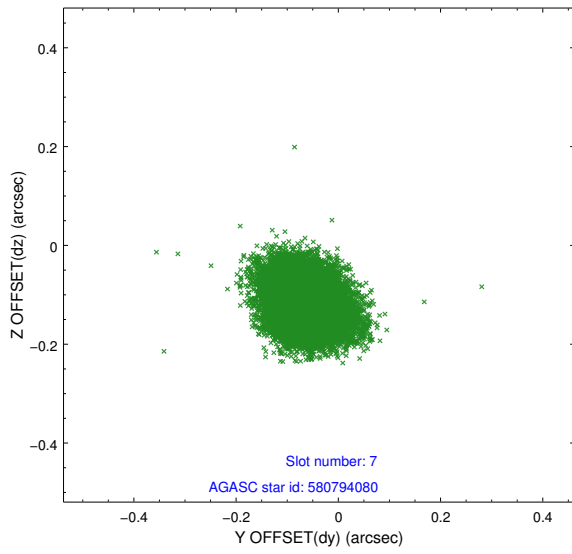
2.4.3 Slot 5



2.4.4 Slot 6

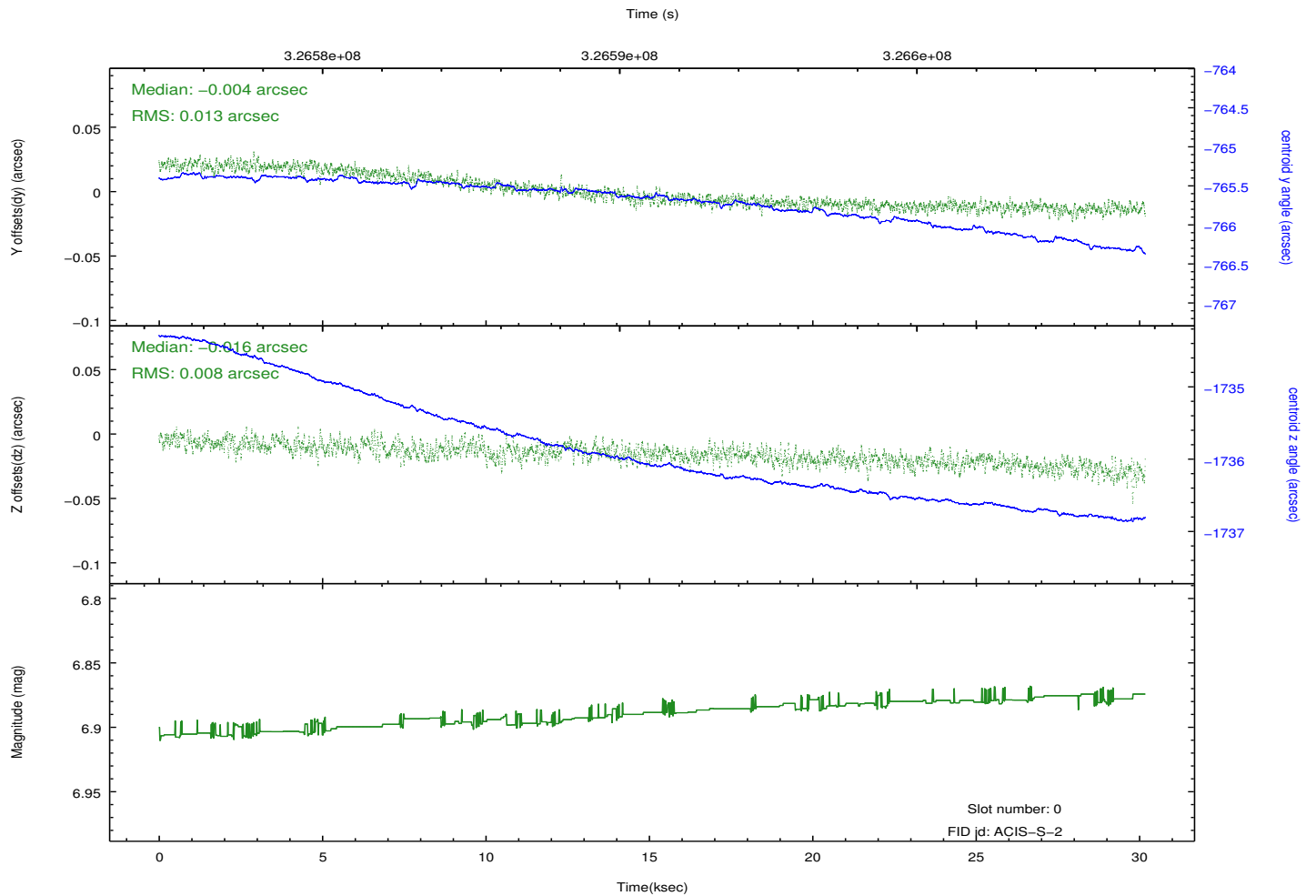
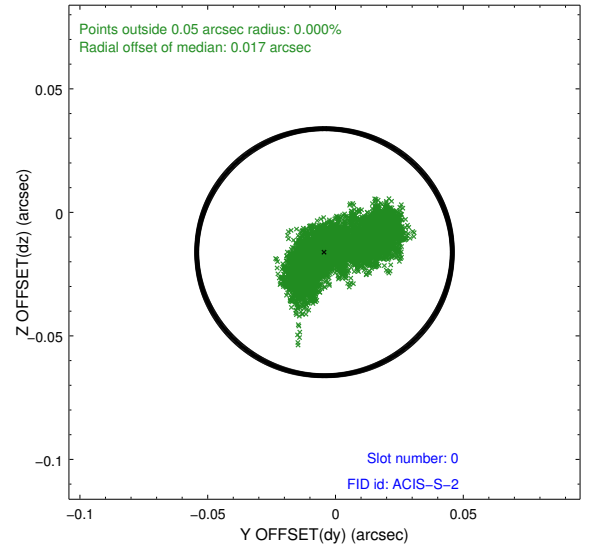
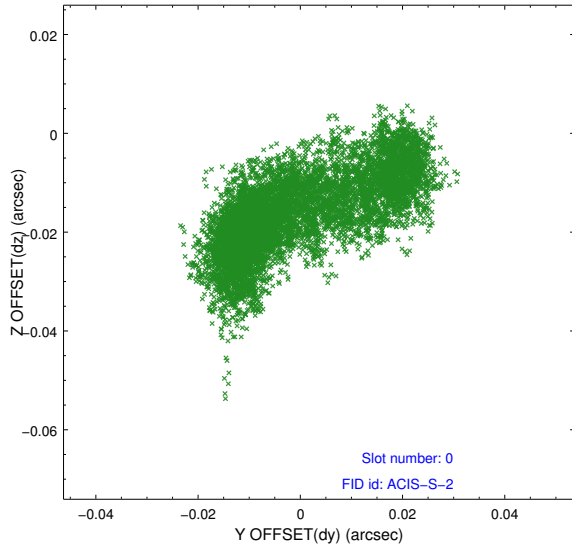


2.4.5 Slot 7

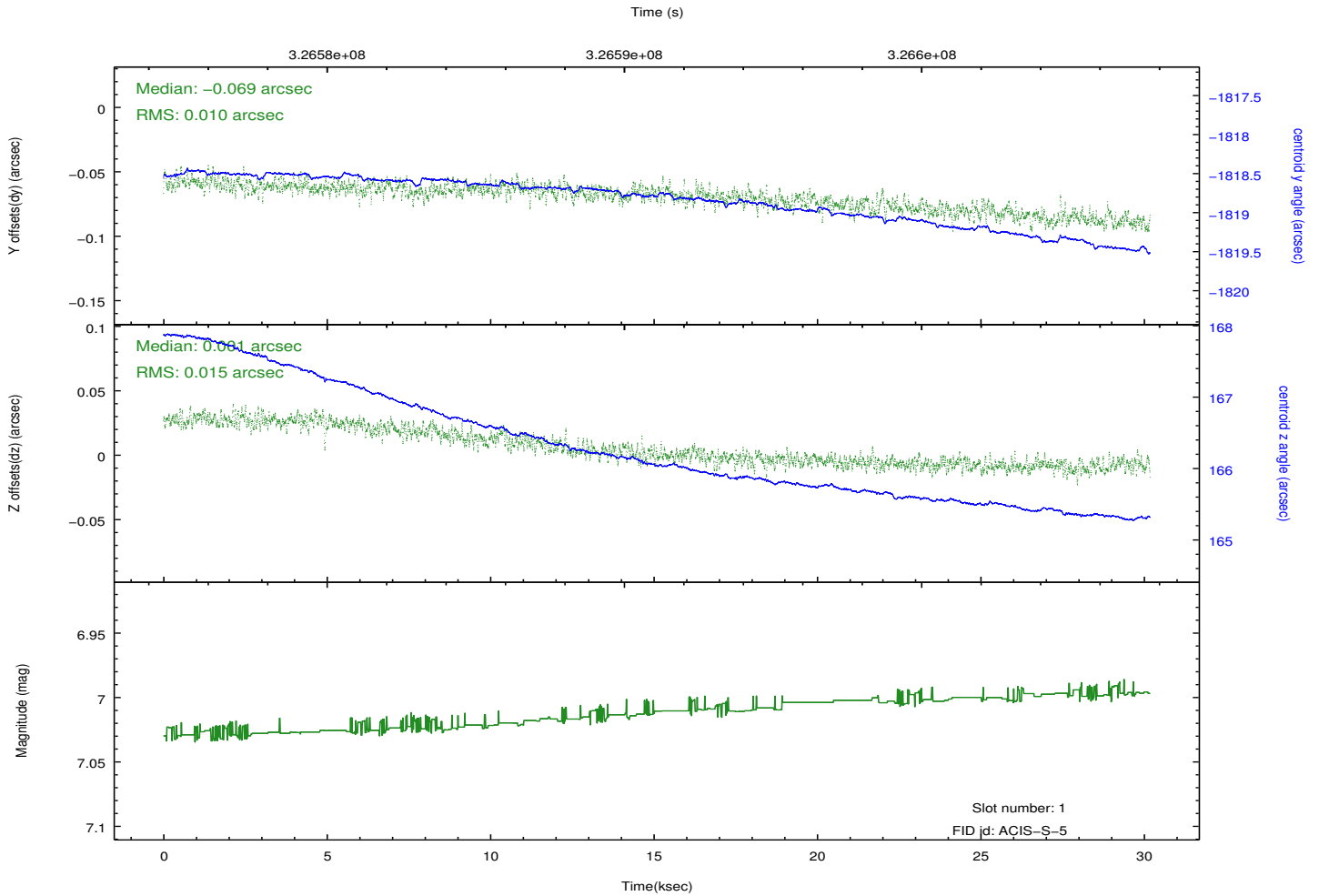
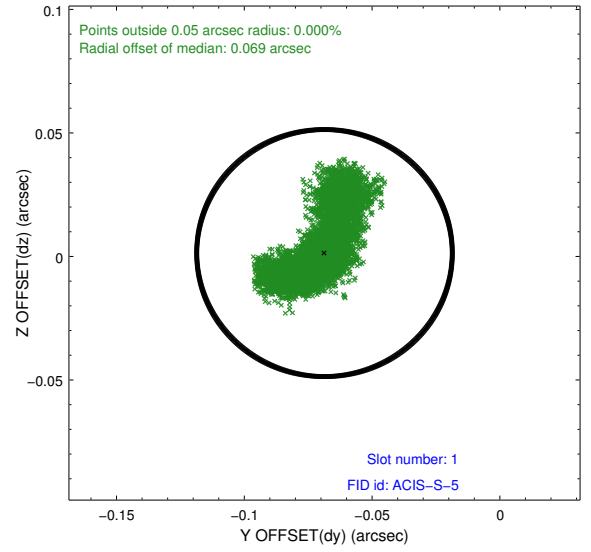
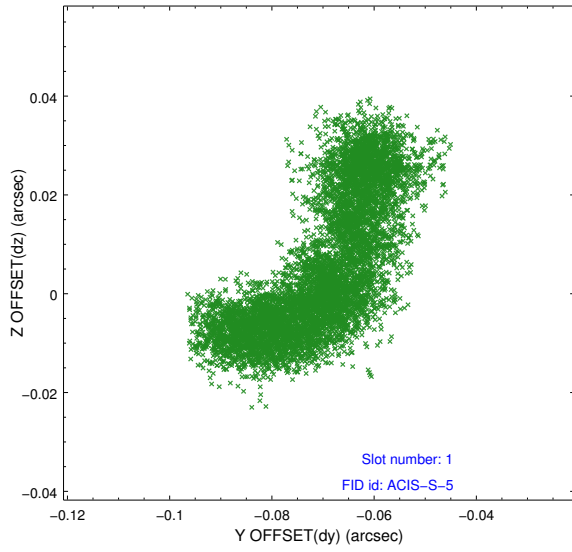


2.5 FID Slots

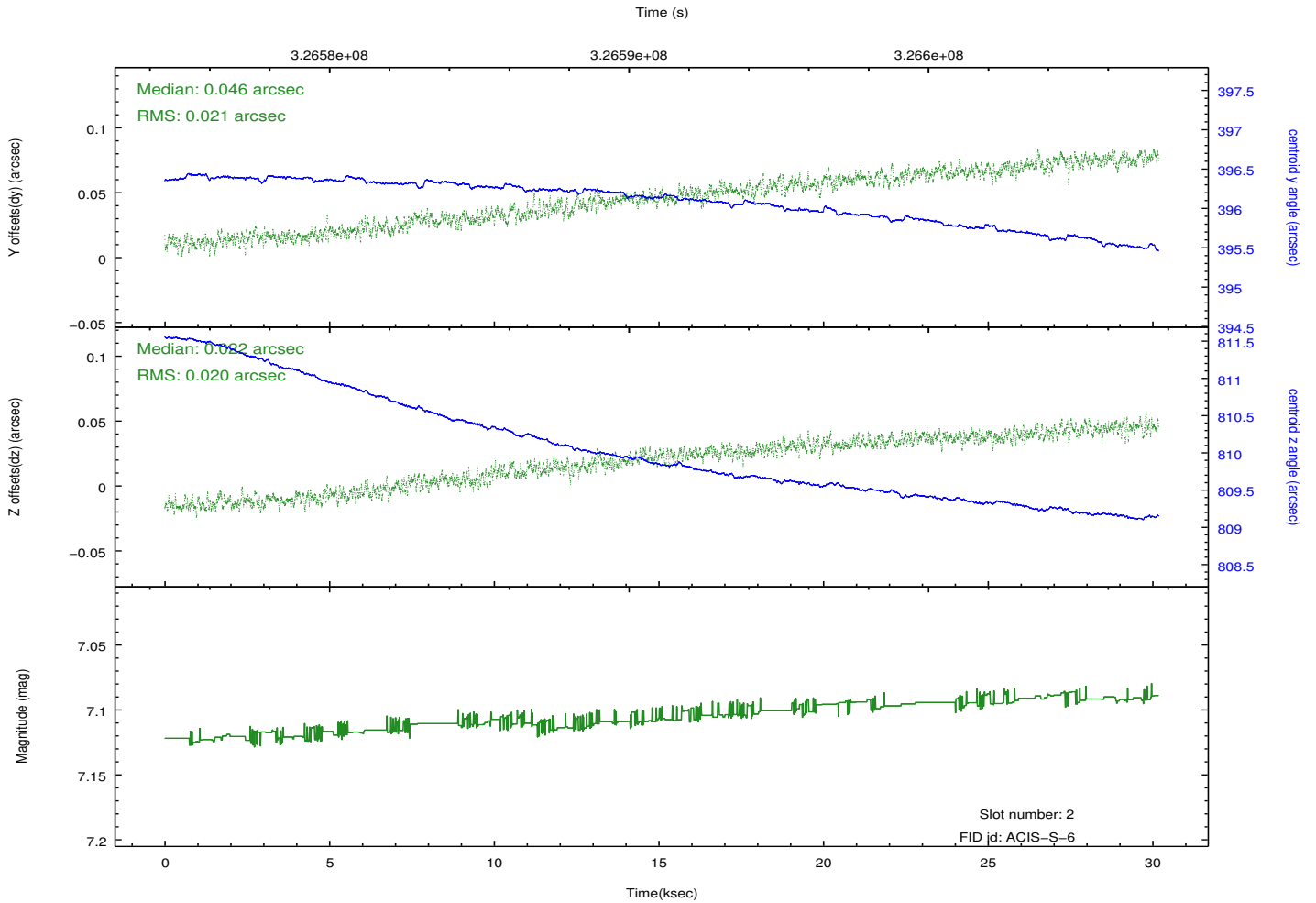
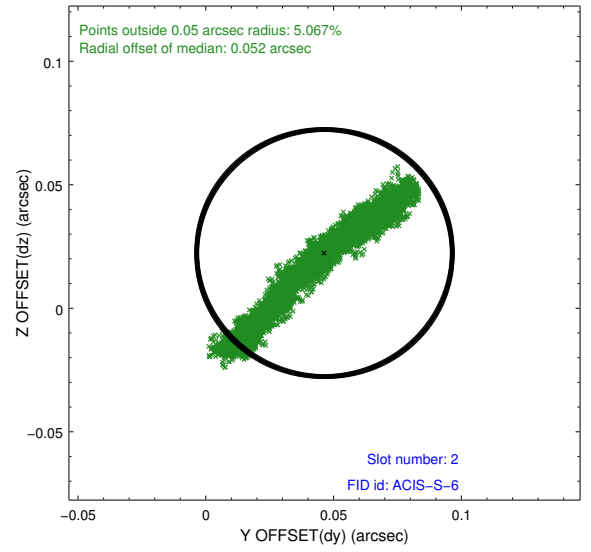
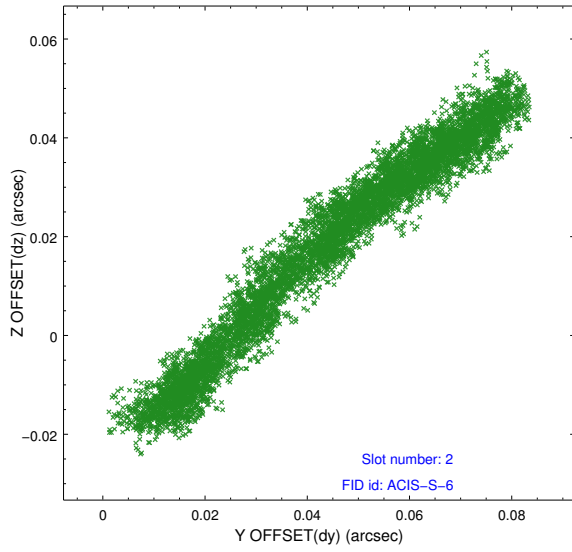
2.5.1 Slot 0



2.5.2 Slot 1



2.5.3 Slot 2



A Summary

A.1 Status

V&V Scientist	Jen Lauer
V&V Date (YYYY-MM-DD)	2012.05.16
V&V Edition	1
V&V Disposition and Status	OK
V&V Charge Time	30.1754002

A.2 Comments