

# V&V Reference Report

## L2 ASCDS Version : 8.4.5

Observation 9913 - L2 Version 2  
Chandra X-Ray Center

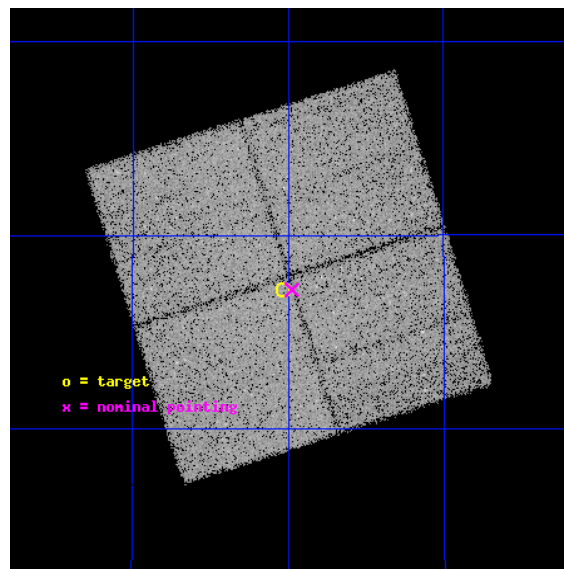
L2 Processing Date : Jun 15 2012

## Contents

<b>1</b>	<b>Front</b>	<b>2</b>
<b>2</b>	<b>OBI</b>	<b>3</b>
2.1	OBI . . . . .	3
2.1.1	Images . . . . .	3
2.1.2	Bias . . . . .	3
2.1.3	Parameters . . . . .	4
2.1.4	Events . . . . .	4
2.2	Compared Parameters . . . . .	5
2.3	Aspect . . . . .	6
2.4	Star Slots . . . . .	9
2.4.1	Slot 3 . . . . .	9
2.4.2	Slot 4 . . . . .	10
2.4.3	Slot 5 . . . . .	11
2.4.4	Slot 6 . . . . .	12
2.4.5	Slot 7 . . . . .	13
2.5	FID Slots . . . . .	14
2.5.1	Slot 0 . . . . .	14
2.5.2	Slot 1 . . . . .	15
2.5.3	Slot 2 . . . . .	16
<b>A</b>	<b>Summary</b>	<b>17</b>
A.1	Status . . . . .	17
A.2	Comments . . . . .	17

# 1 Front

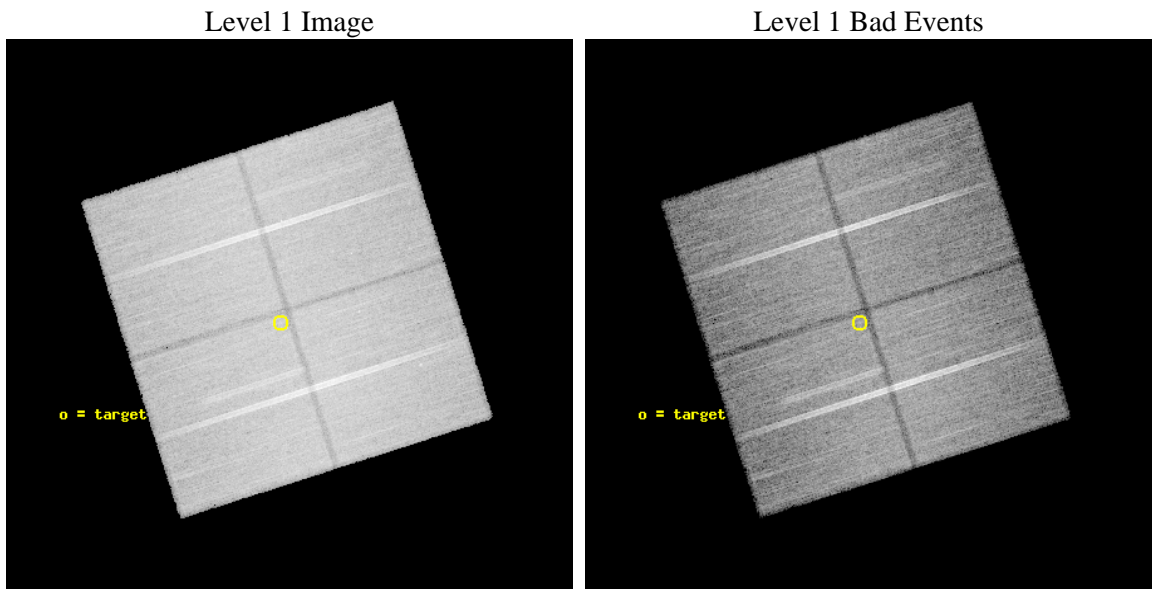
seq_num	200529	Sequence number
obs_id	9913	Observation id
title	Activity and Rotation in the Zero Age Main Sequence cluster h Per	&#160
observer	Dr Giuseppina Micela	Principal investigator
object	h Per	Source name
dtcycle	0	&#160
cycle	P	events from which exps? Prim/Second/Both
ra_targ	34.759167	Observer's specified target RA [deg]
dec_targ	57.12	Observer's specified target Dec [deg]
ra_nom	34.744271082006	Nominal RA [deg]
dec_nom	57.120060516283	Nominal Dec [deg]
roll_nom	162.38267831458	Nominal Roll [deg]
revision	2	Processing version of data
ontime	37162.800285816	Sum of GTIs [s]
livetime	36677.240941226	Livetime [s]
ontime0	37162.800285816	Sum of GTIs [s]
ontime1	37162.800285816	Sum of GTIs [s]
ontime2	37162.800285816	Sum of GTIs [s]
ontime3	37162.800285816	Sum of GTIs [s]
l2events	174025	Number of level 2 events



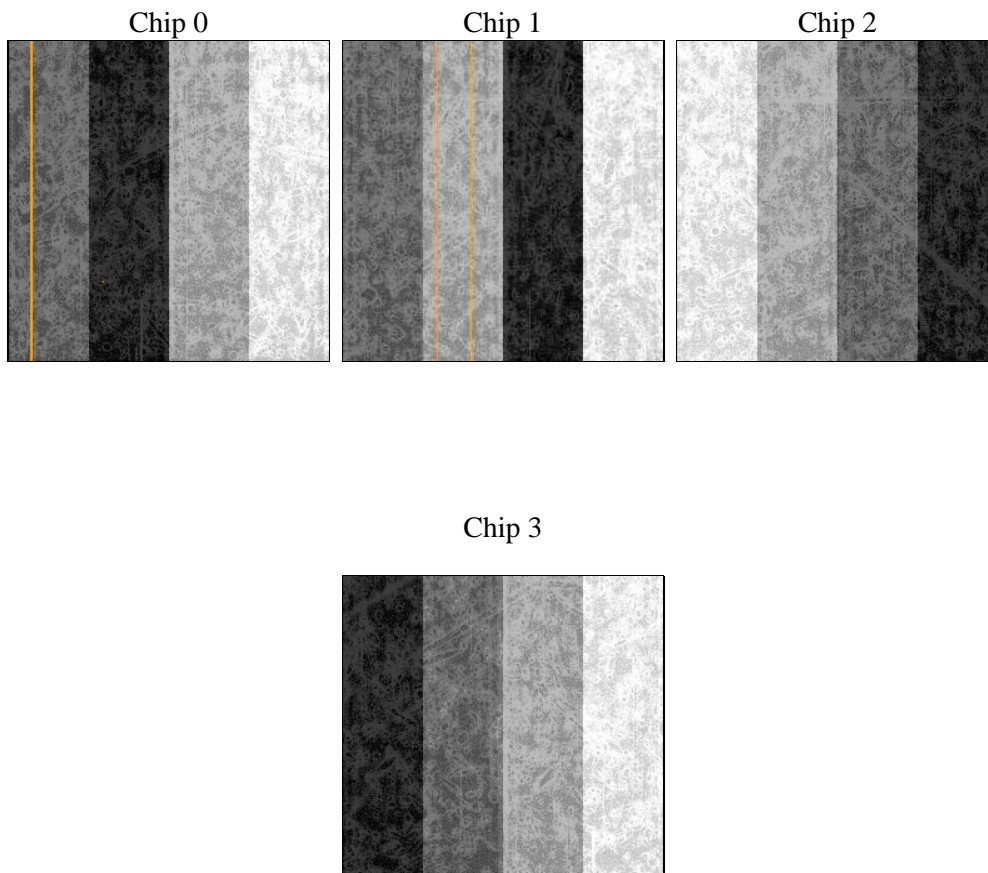
## 2 OBI

### 2.1 OBI

#### 2.1.1 Images



#### 2.1.2 Bias



### 2.1.3 Parameters

obi_num	0	Obi number	sched_exp_time	37000.000000	[s] Scheduled observation exposure time
ascdsver	8.4.5	Processing system revision	ontime	37162.800285816	Sum of GTIs [s]
caldsver	4.4.10	&#160	ontime0	37162.800285816	Sum of GTIs [s]
date	2012-06-15T14:43:00	Date and time of file creation	ontime1	37162.800285816	Sum of GTIs [s]
revision	2	Processing version of data	ontime2	37162.800285816	Sum of GTIs [s]
			ontime3	37162.800285816	Sum of GTIs [s]
			l1events	1520245	Number of level 1 events

### 2.1.4 Events

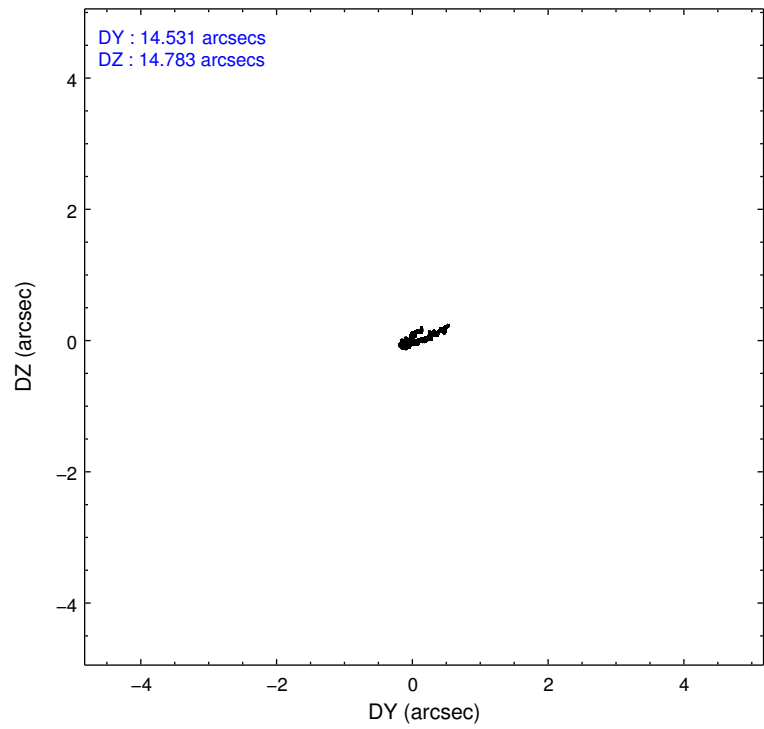
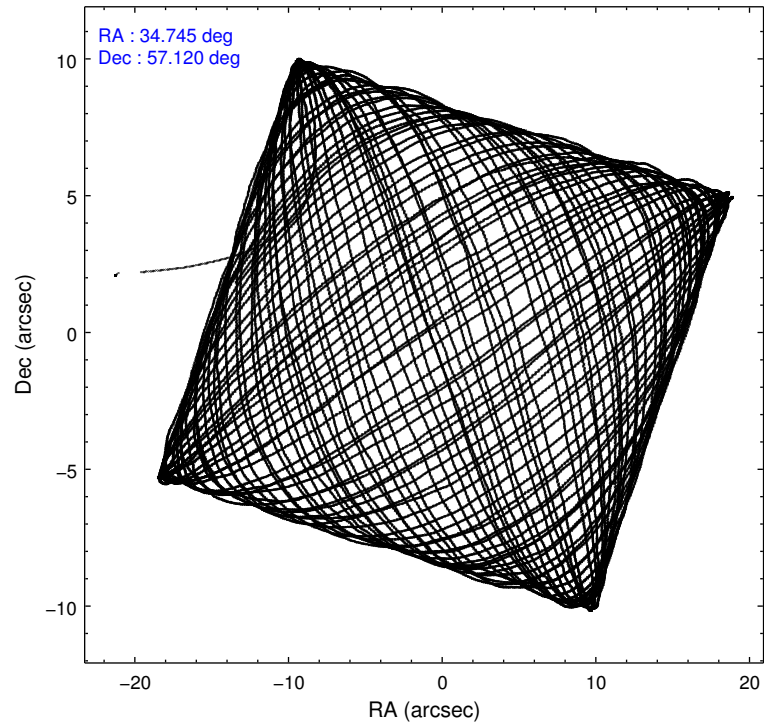
	ccd 0	ccd 1	ccd 2	ccd 3
level 1 events	364178	370594	391419	394054
rejected events	312952	317617	343344	344481
rejected %	85%	85%	87%	87%

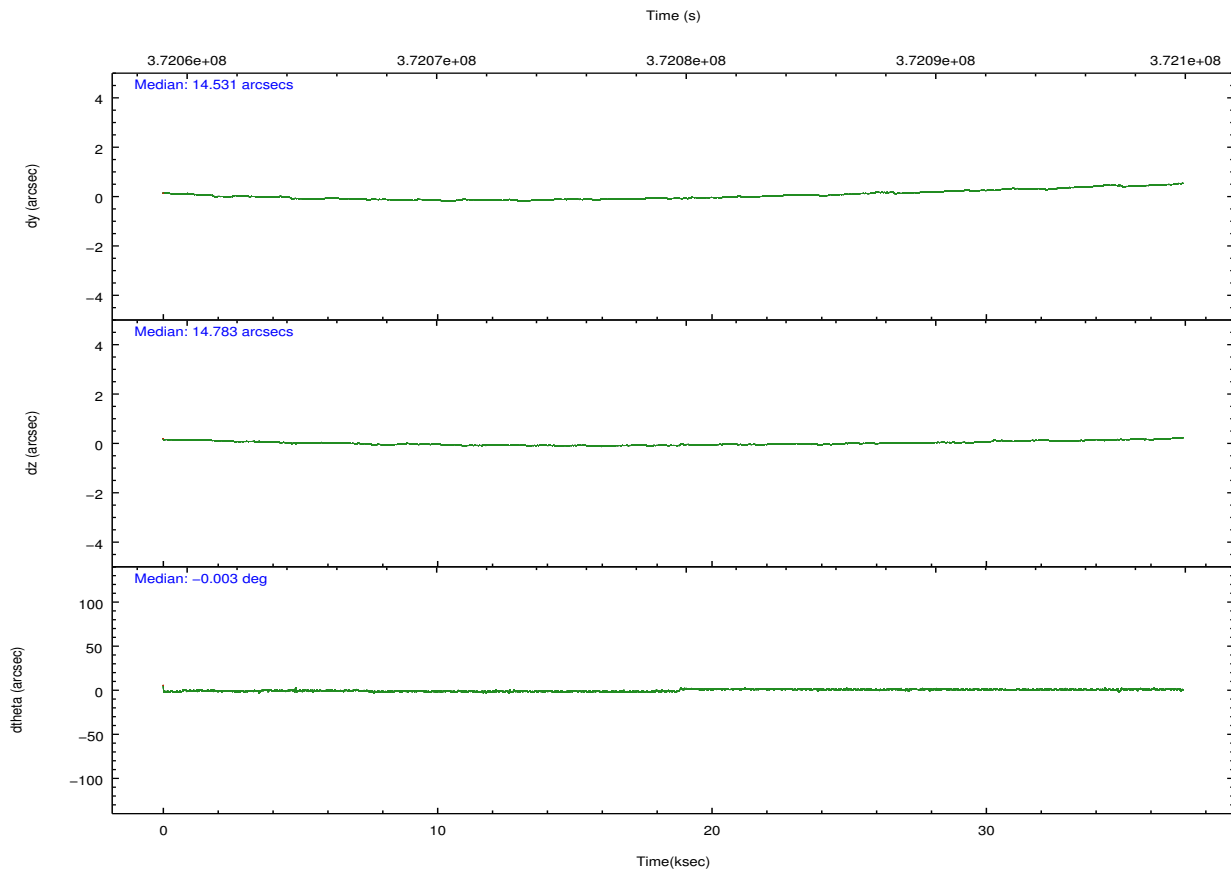
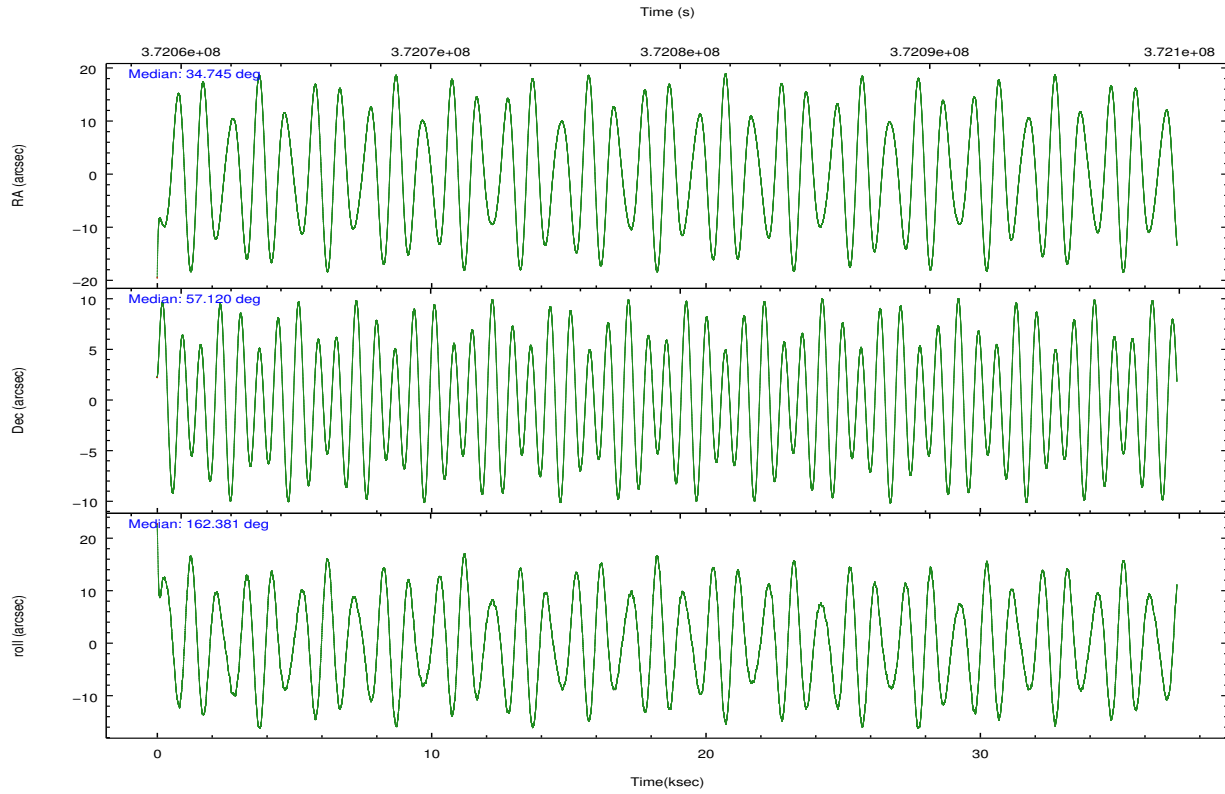
	ccd 0	ccd 1	ccd 2	ccd 3
grade 0 events	22715	20937	21470	22385
	6%	5%	5%	5%
grade 1 events	229	219	289	285
	0%	0%	0%	0%
grade 2 events	11541	12760	10391	10200
	3%	3%	2%	2%
grade 3 events	4640	4857	4317	4496
	1%	1%	1%	1%
grade 4 events	4300	4769	4478	4489
	1%	1%	1%	1%
grade 5 events	17291	18082	16382	19184
	4%	4%	4%	4%
grade 6 events	8755	10398	8077	8743
	2%	2%	2%	2%
grade 7 events	294707	298572	326015	324272
	80%	80%	83%	82%

## 2.2 Compared Parameters

Parameter	Planned	Actual	Parameter	Planned	Actual
Instrument	ACIS	ACIS	Obspar format version number	7	7
Detector	ACIS-0123	ACIS-0123	Obspar file type	PREDICTED	ACTUAL
Grating	NONE	NONE	Obspar update status	NONE	UPDATED
Data mode	FAINT	FAINT	Number of optional ACIS chips dropped	0	0
Observation mode	POINTING	POINTING	On-chip summing requested	N	N
[deg] Pointing RA	34.793725	34.74427108200604	Subarray requested	NONE	NONE
[deg] Pointing Dec	57.126048	57.12006051628255	Alternating exposures requested	N	N
[deg] Pointing Roll	162.132453	162.3826783145838	[s] Primary exposure time	0.000000	3.1
[mm] SIM focus pos	-0.782348	-0.7809083437167272			
[mm] SIM defocus	0	0.001439871863259334			
[mm] SIM translation stage pos	-233.592463	-233.5874344608287			
[mm] SIM translation stage offset	0	-0.005018542100998502			
[s] Observation start time (MET)	372061061.184000	372059869.11472			
Observation start date	2009-10-16T06:16:35	2009-10-16T05:57:49			
[s] Observation end time (MET)	372098061.184000	372098949.80419			
Observation end date	2009-10-16T16:33:15	2009-10-16T16:49:09			
Read mode	TIMED	TIMED			

## 2.3 Aspect



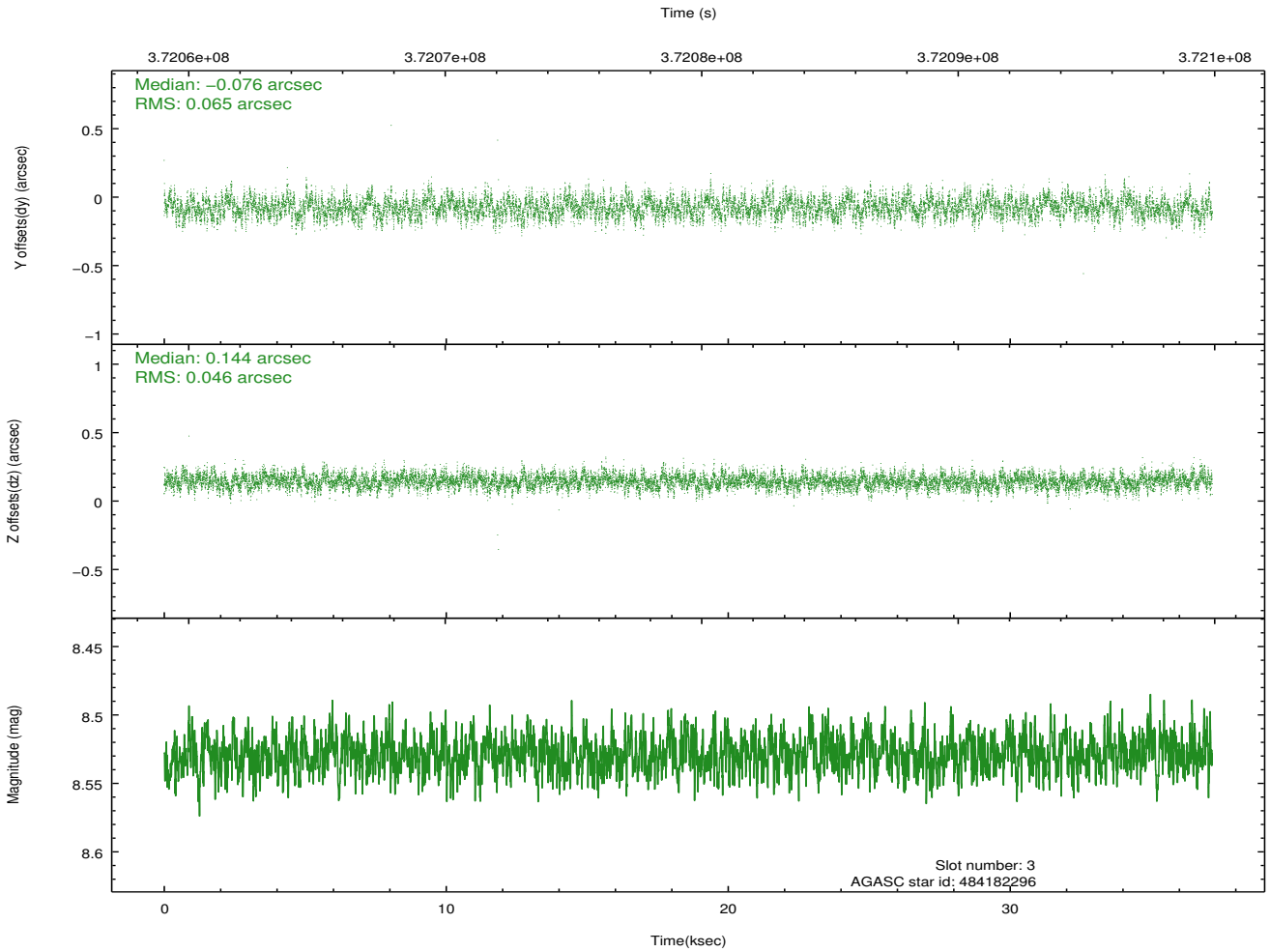
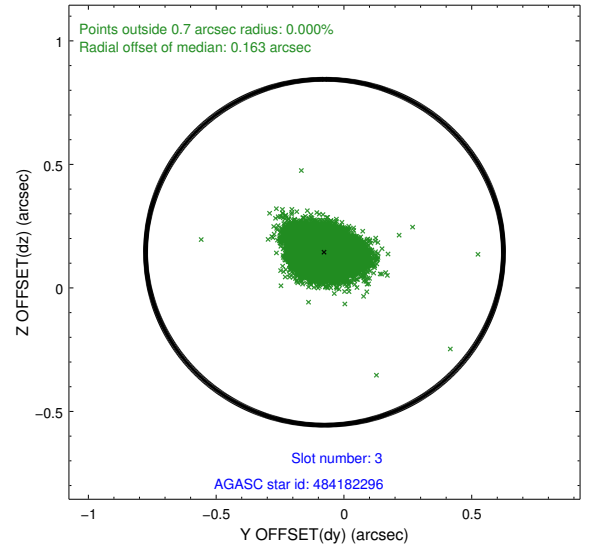
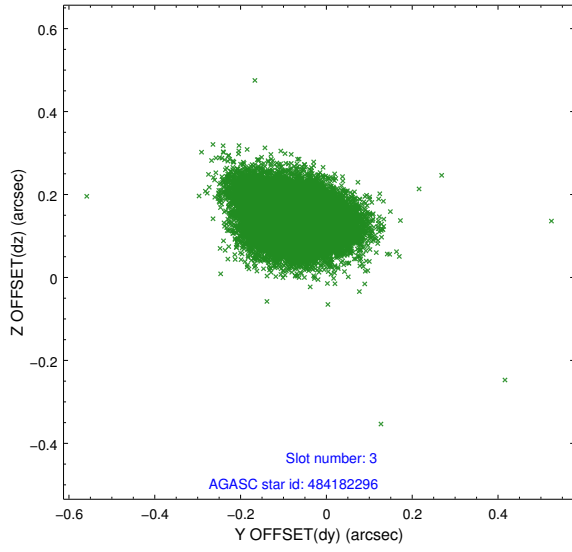


### Slot Statistics

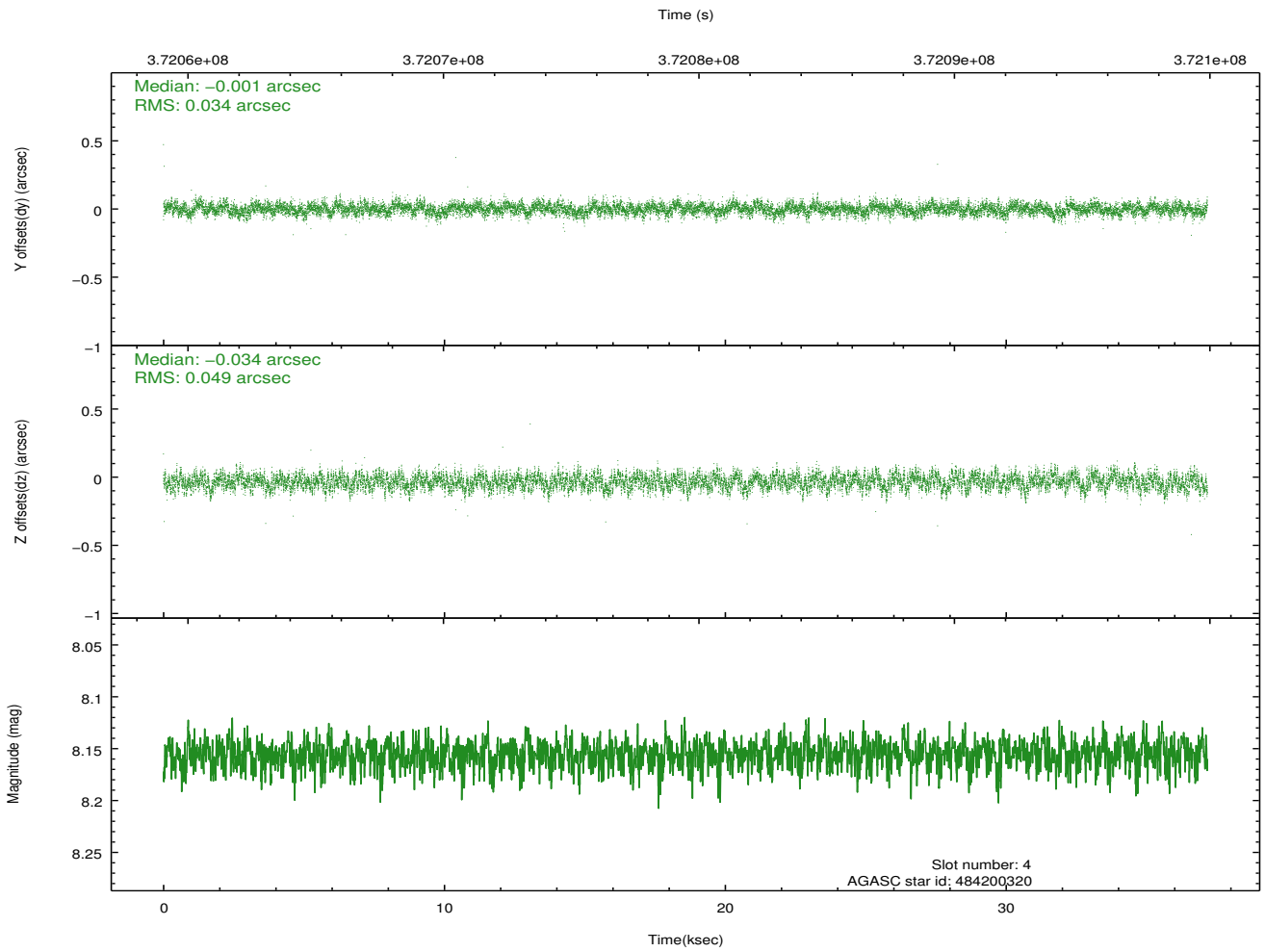
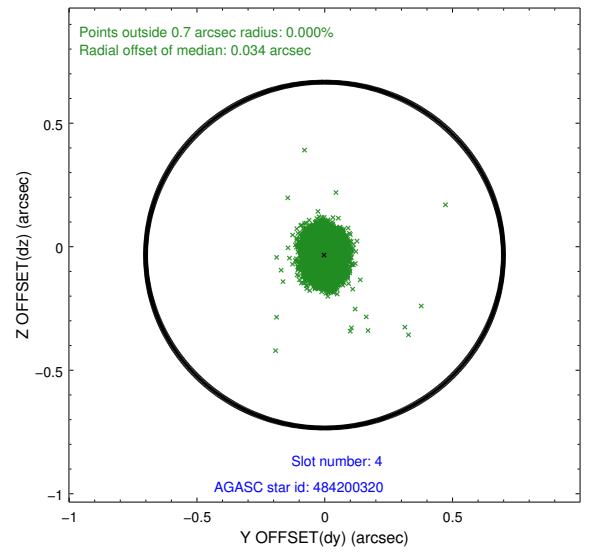
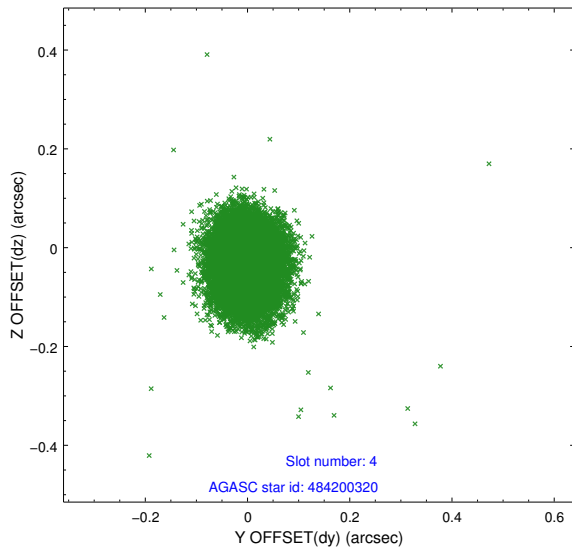
slot	status	id	mag	n_pts	med_dy	med_dz	dr1	dr2	ra	dec	mean_y	mean_z
0	FID	ACIS-I-1	7.05	9067	-0.001	0.012	0.017	0.027	0.000000	0.000000	924.89	-838.36
1	FID	ACIS-I-4	6.98	9066	0.144	0.016	0.015	0.024	0.000000	0.000000	2145.07	1061.45
2	FID	ACIS-I-5	7.05	9067	-0.240	0.043	0.009	0.020	0.000000	0.000000	-1823.34	1059.30
3	GUIDE	484182296	8.53	18121	-0.076	0.144	0.084	0.139	33.914203	57.763321	2315.12	-1675.20
4	GUIDE	484200320	8.16	18125	-0.001	-0.034	0.062	0.101	34.602507	56.559914	-267.52	2056.98
5	GUIDE	484201016	8.52	18124	-0.009	0.087	0.080	0.125	34.366863	57.365646	1054.40	-568.46
6	GUIDE	484204112	7.90	18127	0.136	-0.232	0.070	0.112	34.518005	56.479546	-191.55	2382.39
7	GUIDE	484190192	7.94	18127	-0.048	0.036	0.060	0.100	35.725949	56.623216	-2308.48	1144.97

## 2.4 Star Slots

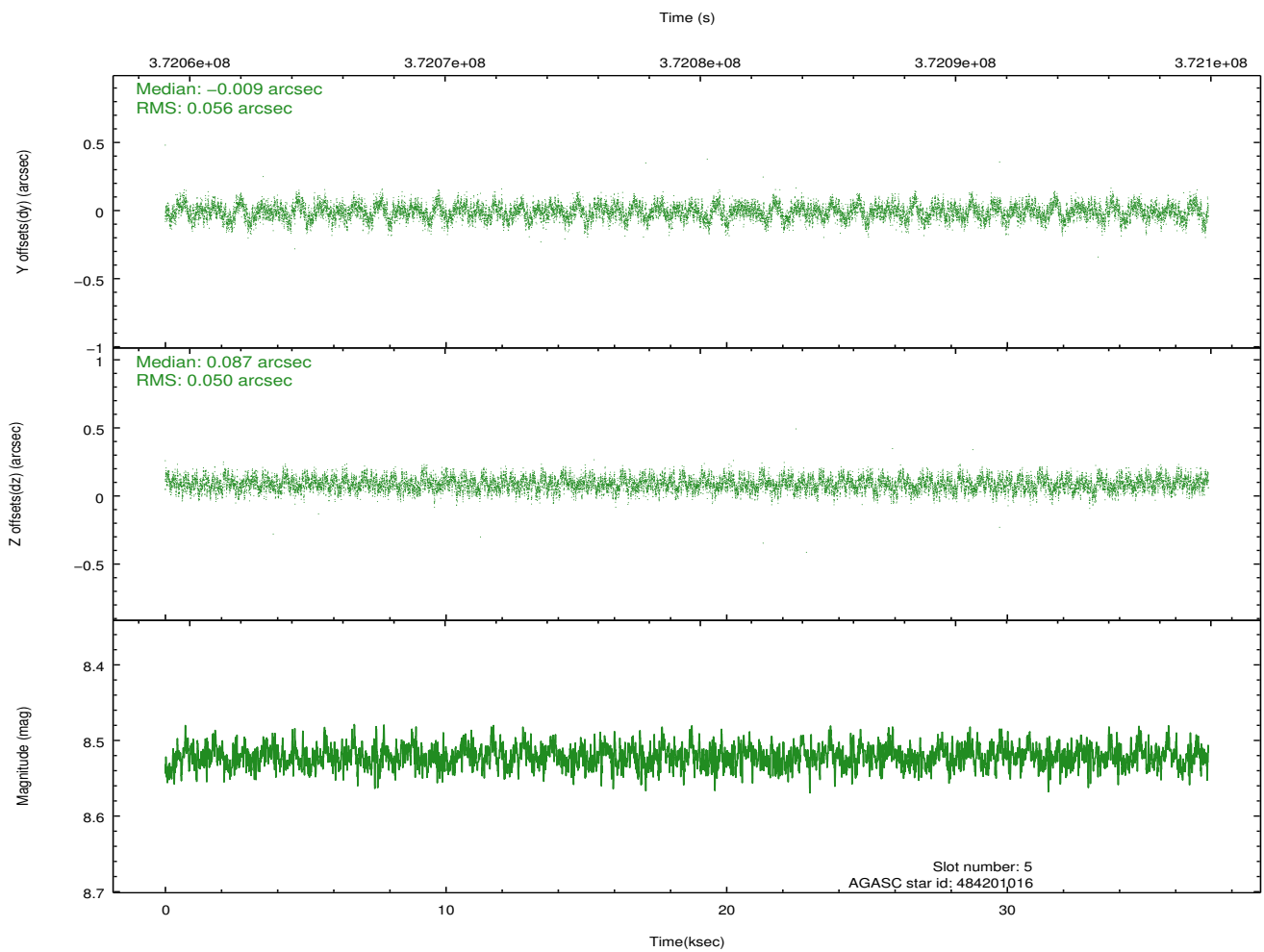
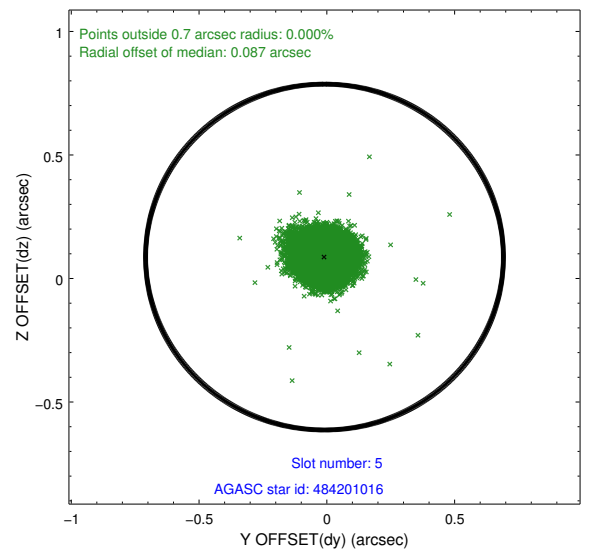
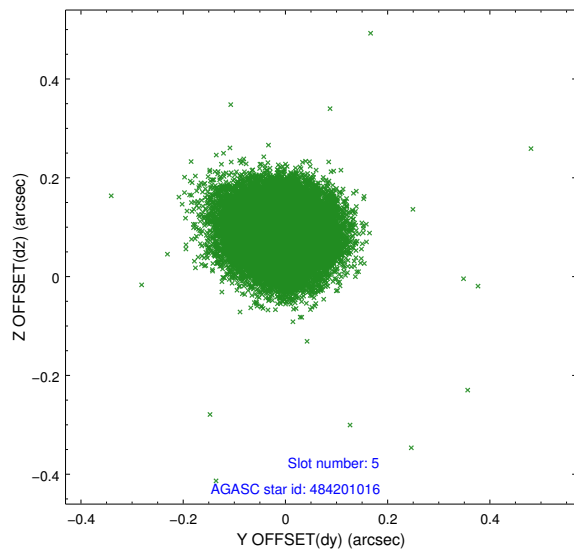
### 2.4.1 Slot 3



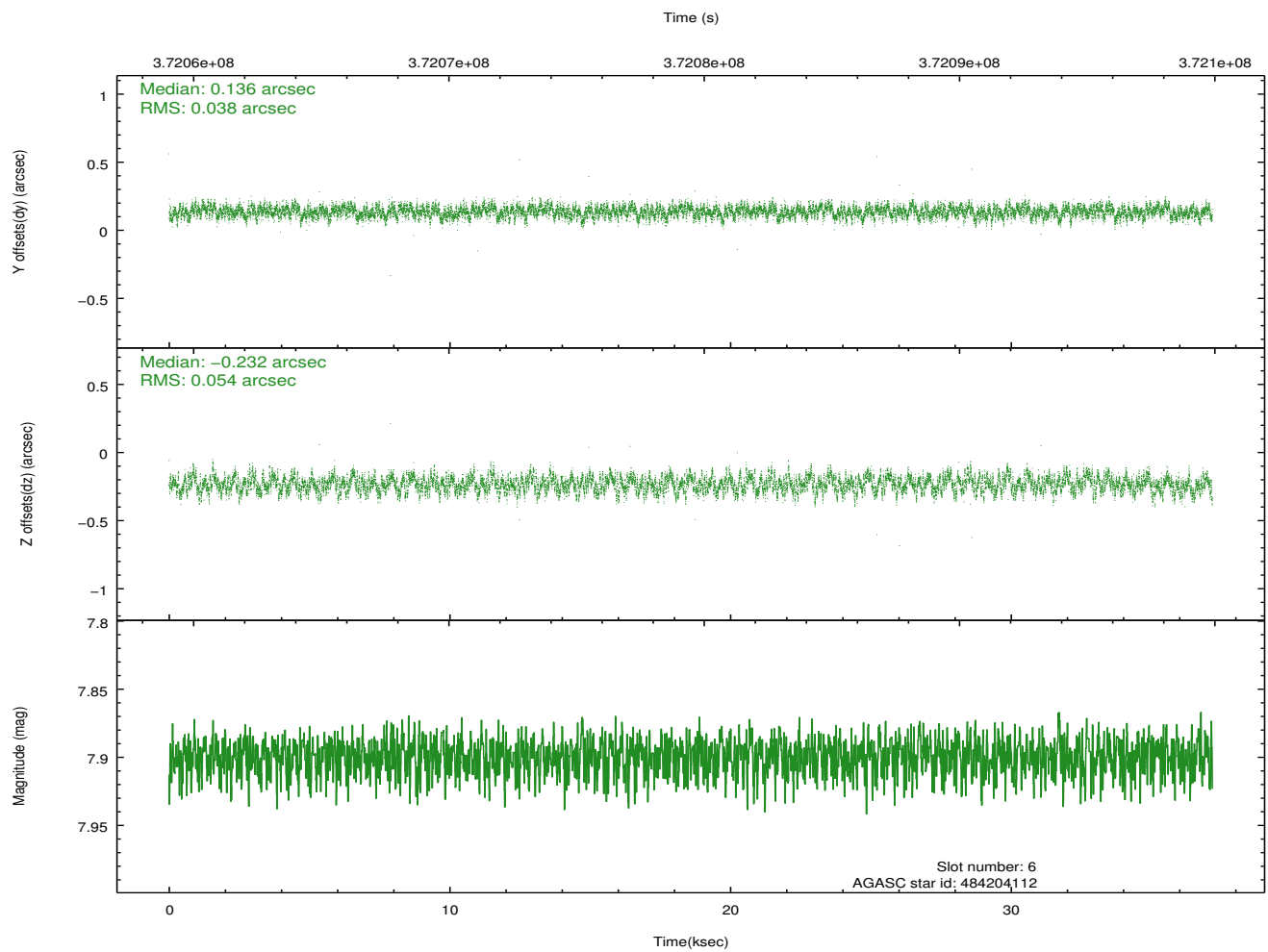
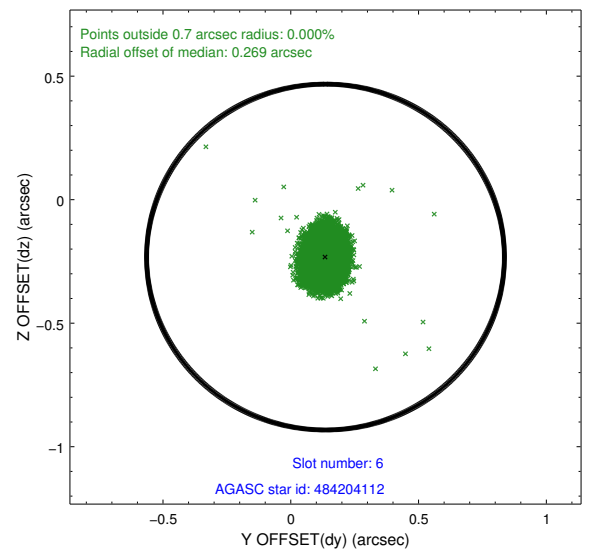
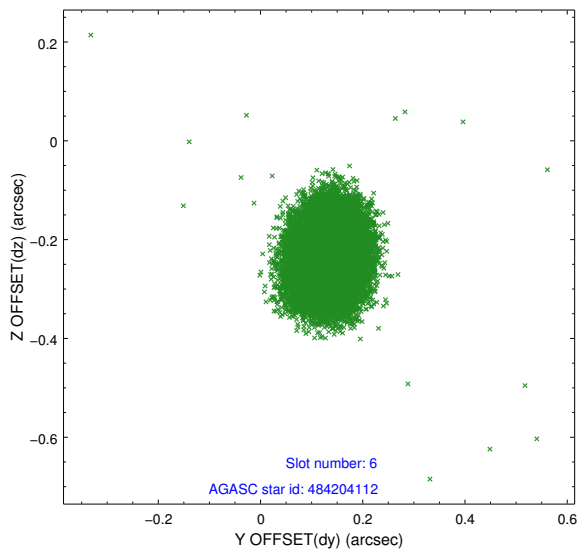
### 2.4.2 Slot 4



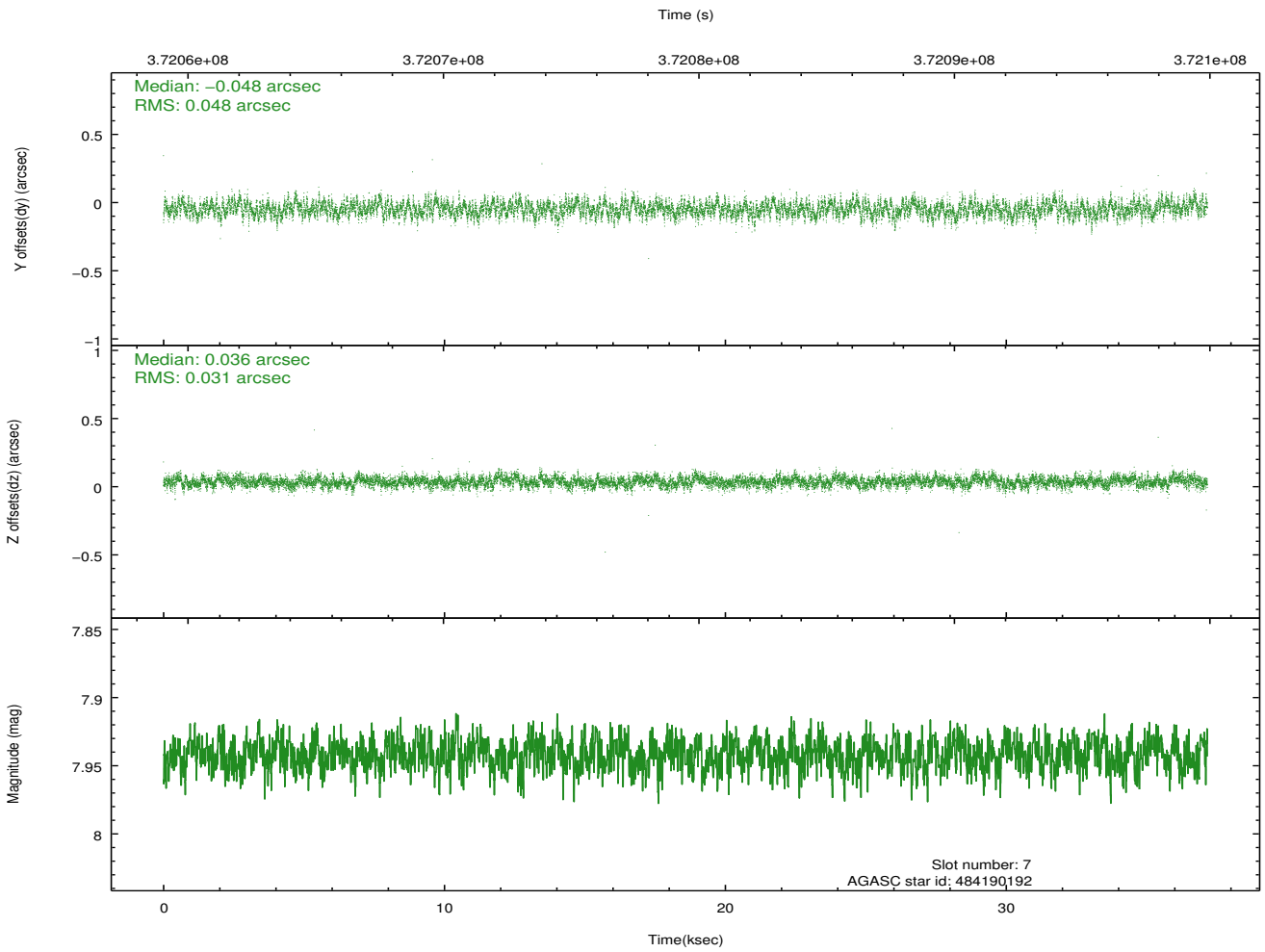
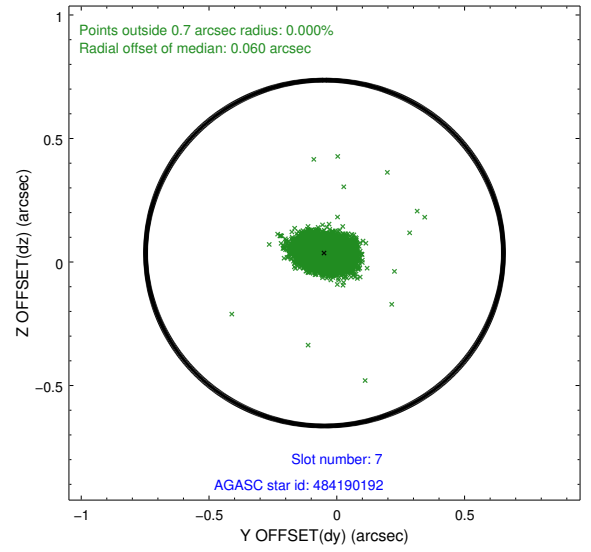
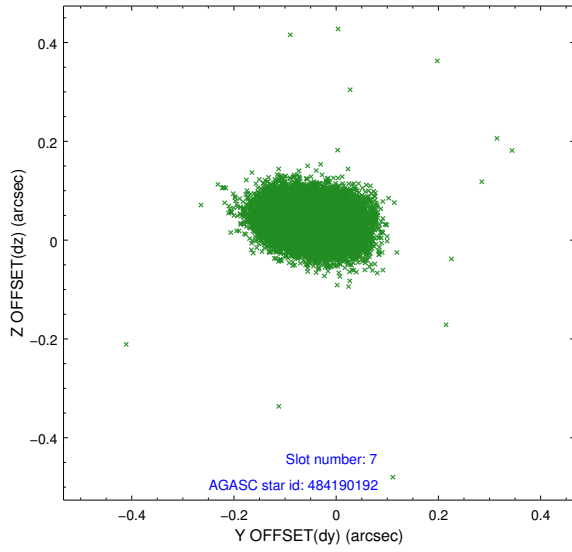
### 2.4.3 Slot 5



## 2.4.4 Slot 6

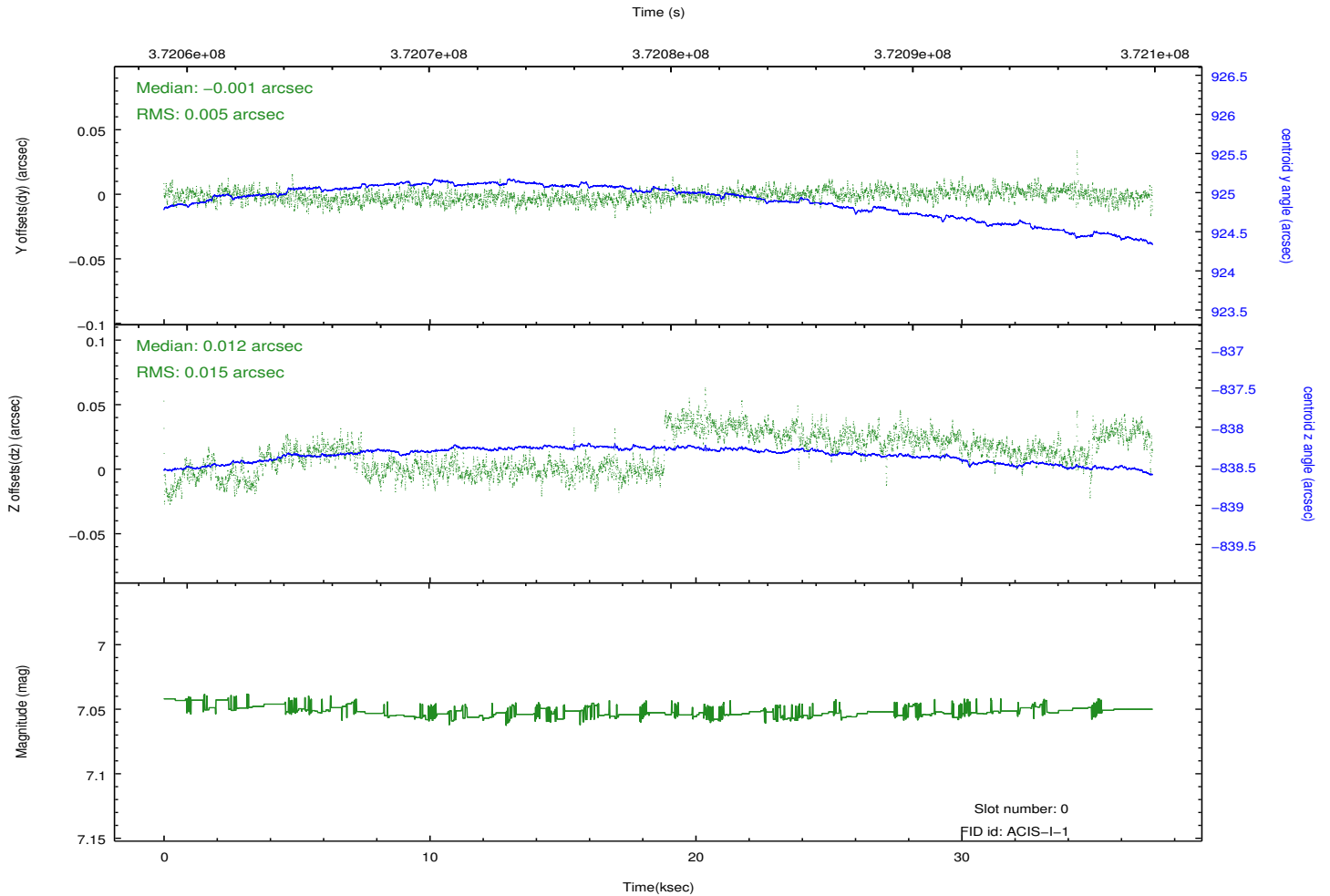
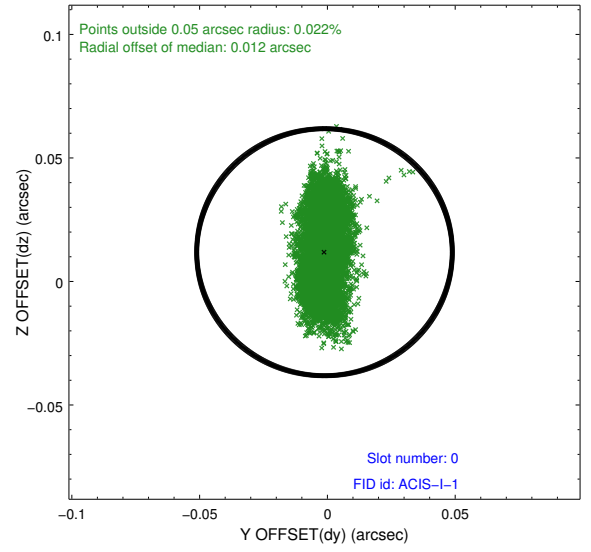
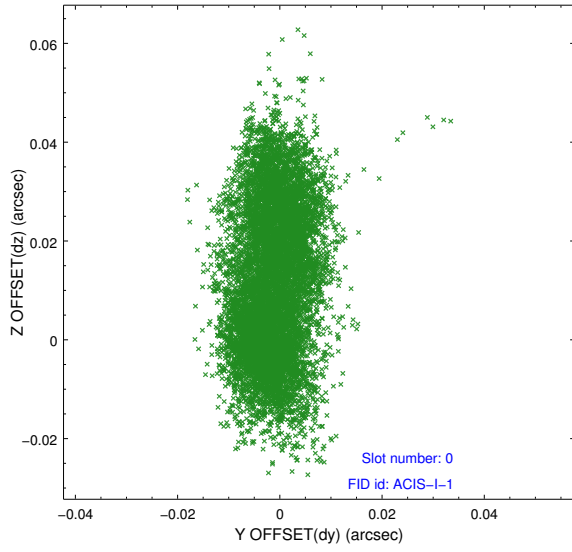


### 2.4.5 Slot 7

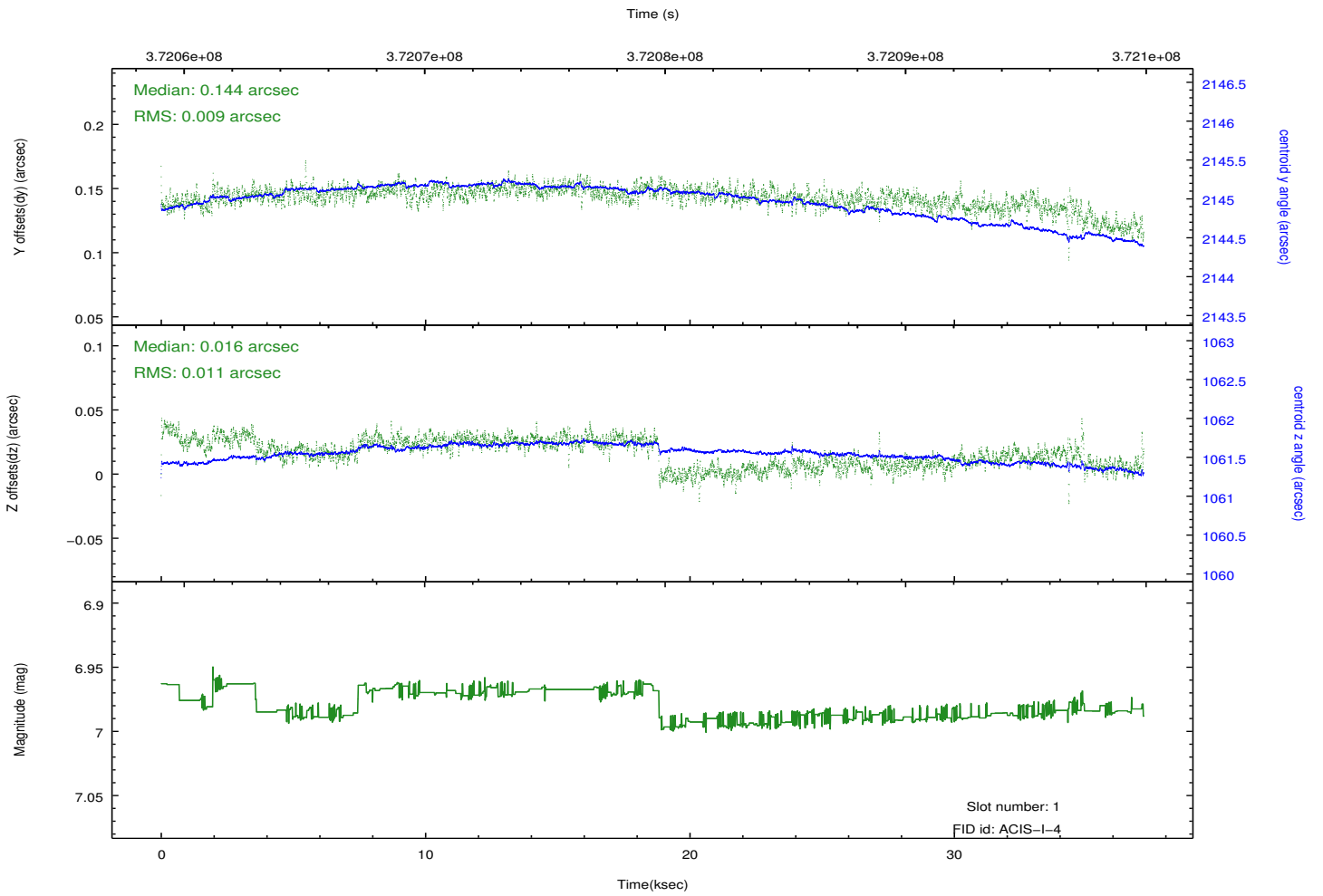
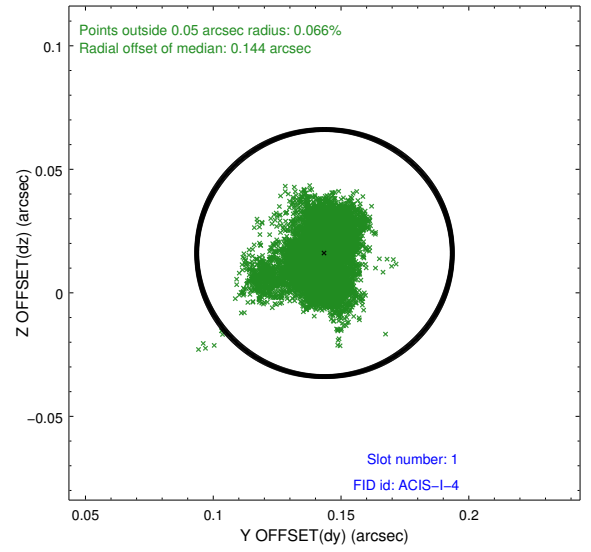
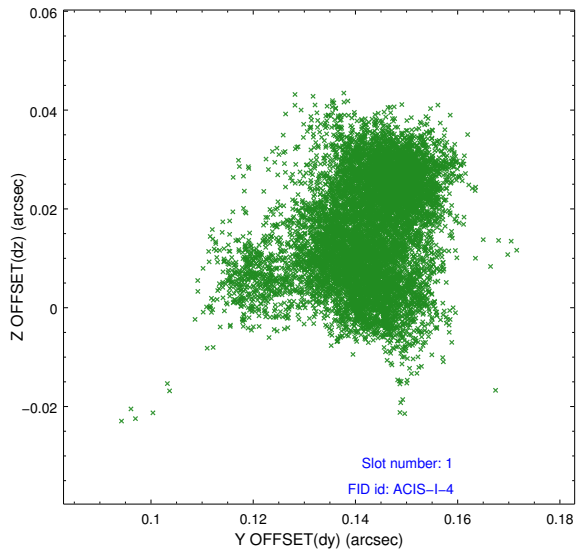


## 2.5 FID Slots

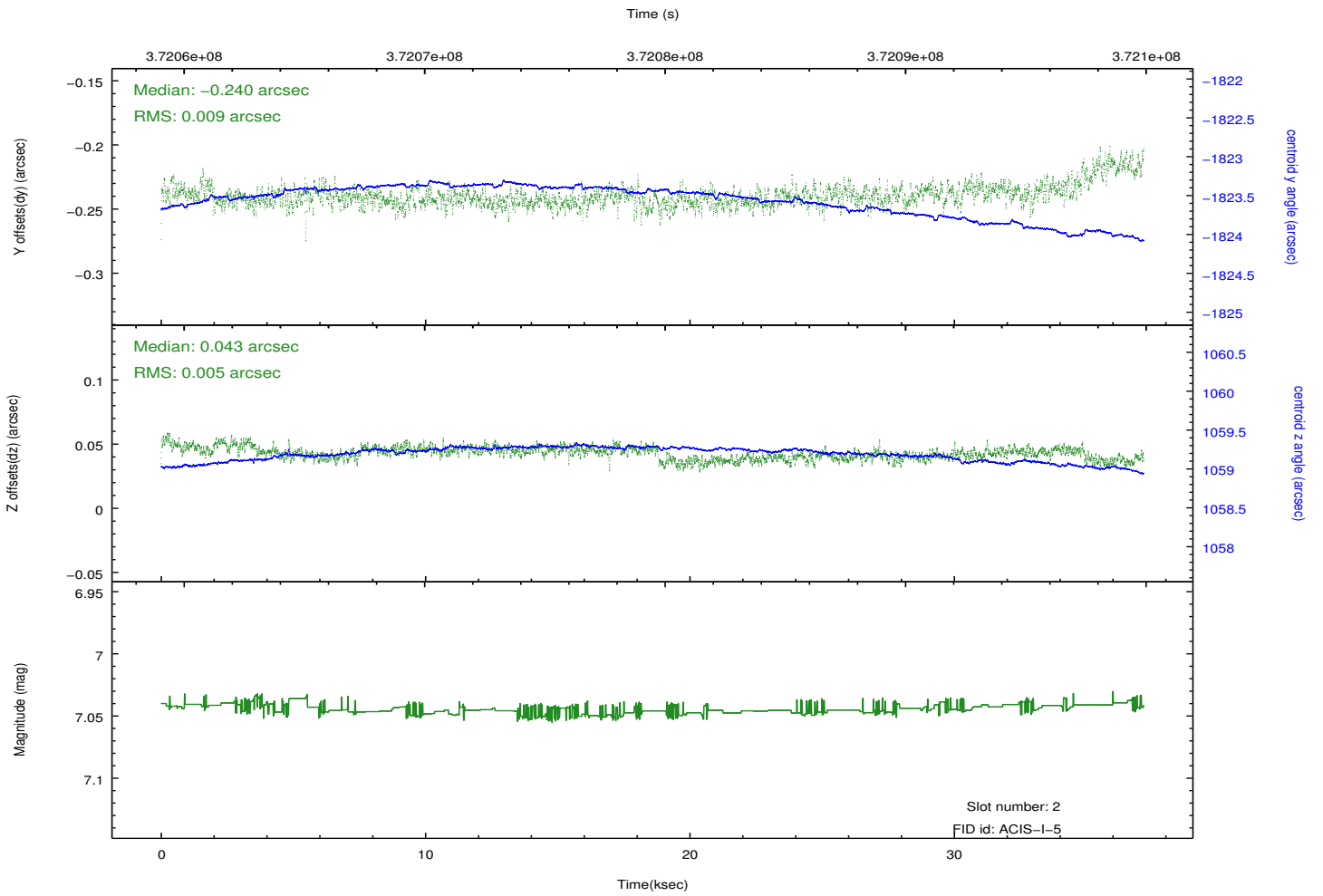
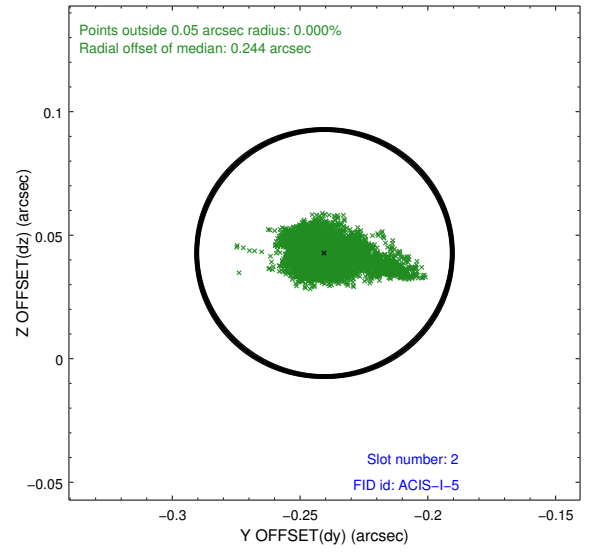
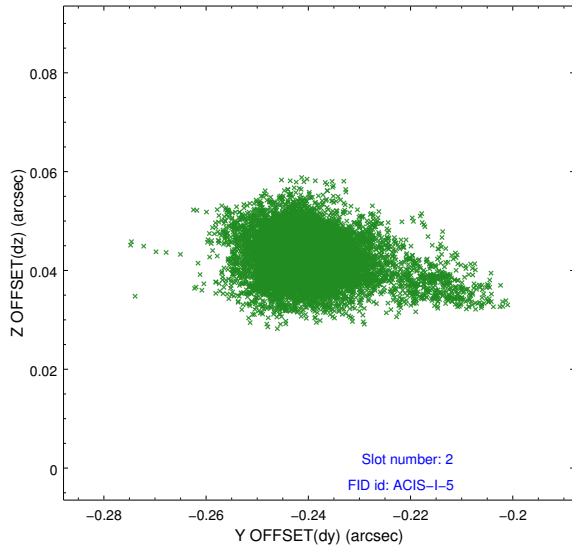
### 2.5.1 Slot 0



## 2.5.2 Slot 1



### 2.5.3 Slot 2



# A Summary

## A.1 Status

V&V Scientist	Jen Lauer
V&V Date (YYYY-MM-DD)	2012.06.19
V&V Edition	1
V&V Disposition and Status	OK
V&V Charge Time	37.162800285816

## A.2 Comments