

# V&V Reference Report

## L2 ASCDS Version : 8.4.4

Observation 10394 - L2 Version 2  
Chandra X-Ray Center

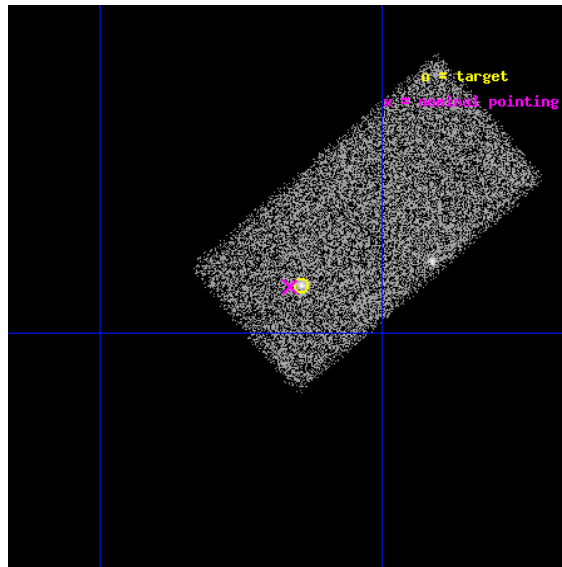
L2 Processing Date : May 24 2012

## Contents

<b>1</b>	<b>Front</b>	<b>2</b>
<b>2</b>	<b>OBI</b>	<b>3</b>
2.1	OBI . . . . .	3
2.1.1	Images . . . . .	3
2.1.2	Bias . . . . .	3
2.1.3	Parameters . . . . .	4
2.1.4	Events . . . . .	4
2.2	Compared Parameters . . . . .	5
2.3	Aspect . . . . .	6
2.4	Star Slots . . . . .	9
2.4.1	Slot 3 . . . . .	9
2.4.2	Slot 4 . . . . .	10
2.4.3	Slot 5 . . . . .	11
2.4.4	Slot 6 . . . . .	12
2.4.5	Slot 7 . . . . .	13
2.5	FID Slots . . . . .	14
2.5.1	Slot 0 . . . . .	14
2.5.2	Slot 1 . . . . .	15
2.5.3	Slot 2 . . . . .	16
<b>A</b>	<b>Summary</b>	<b>17</b>
A.1	Status . . . . .	17
A.2	Comments . . . . .	17

# 1 Front

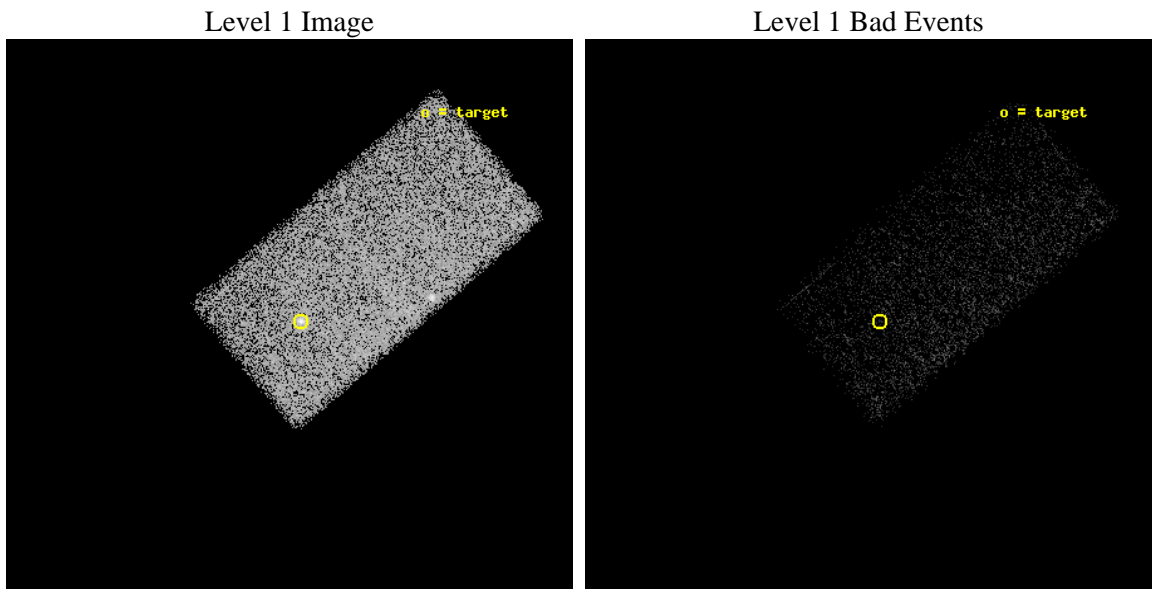
seq_num	701937	Sequence number
obs_id	10394	Observation id
title	A Complete Census of AGN Activity in Luminous Infrared Galaxies	Pr
observer	Dr David Alexander	Principal investigator
object	NGC838	Source name
dtcycle	0	&#160
cycle	P	events from which exps? Prim/Second/Both
ra_targ	32.410833	Observer's specified target RA [deg]
dec_targ	-10.146111	Observer's specified target Dec [deg]
ra_nom	32.415718396252	Nominal RA [deg]
dec_nom	-10.146851688676	Nominal Dec [deg]
roll_nom	319.46837115113	Nominal Roll [deg]
revision	2	Processing version of data
ontime	14202.0	Sum of GTIs [s]
livetime	13823.78134247	Livetime [s]
ontime7	14202.0	Sum of GTIs [s]
l2events	28483	Number of level 2 events



## 2 OBI

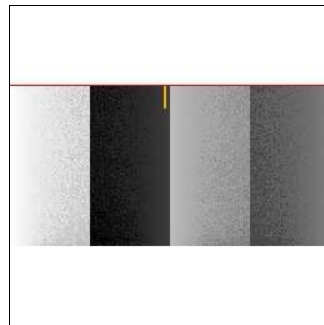
### 2.1 OBI

#### 2.1.1 Images



#### 2.1.2 Bias

Chip 7



### 2.1.3 Parameters

obi_num	0	Obi number	sched_exp_time	14038.469000	[s] Scheduled observation exposure time
ascdsver	8.4.4	Processing system revision	ontime	14202.0	Sum of GTIs [s]
caldbver	4.4.9	&#160	ontime7	14202.0	Sum of GTIs [s]
date	2012-05-24T15:45:52	Date and time of file creation	l1events	60366	Number of level 1 events
revision	2	Processing version of data			

### 2.1.4 Events

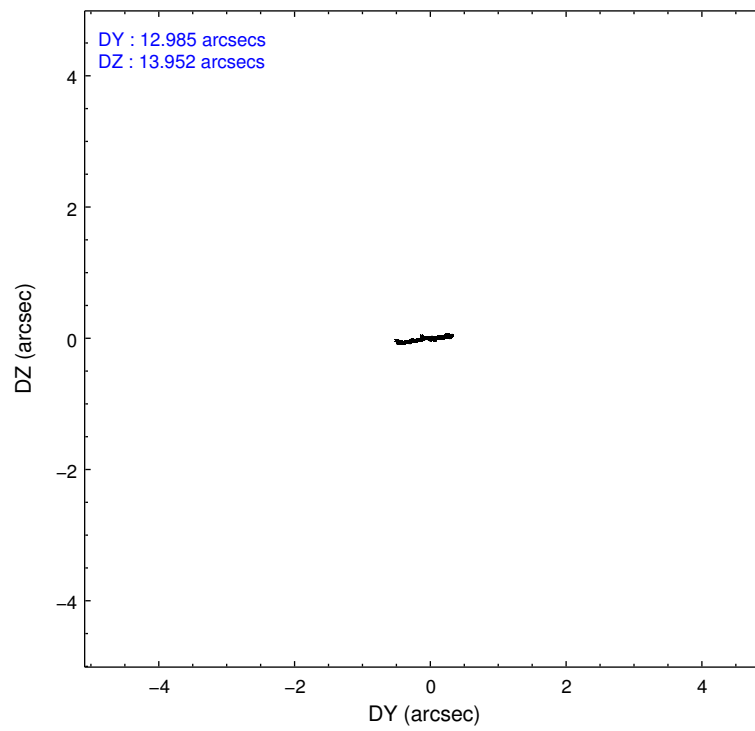
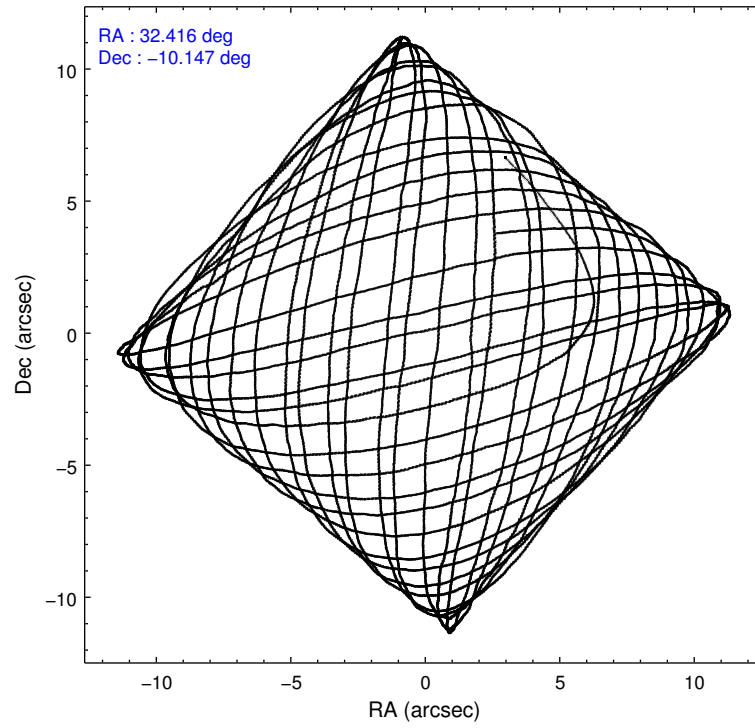
	<b>ccd 7</b>
level 1 events	60366
rejected events	30891
rejected %	<b>51%</b>

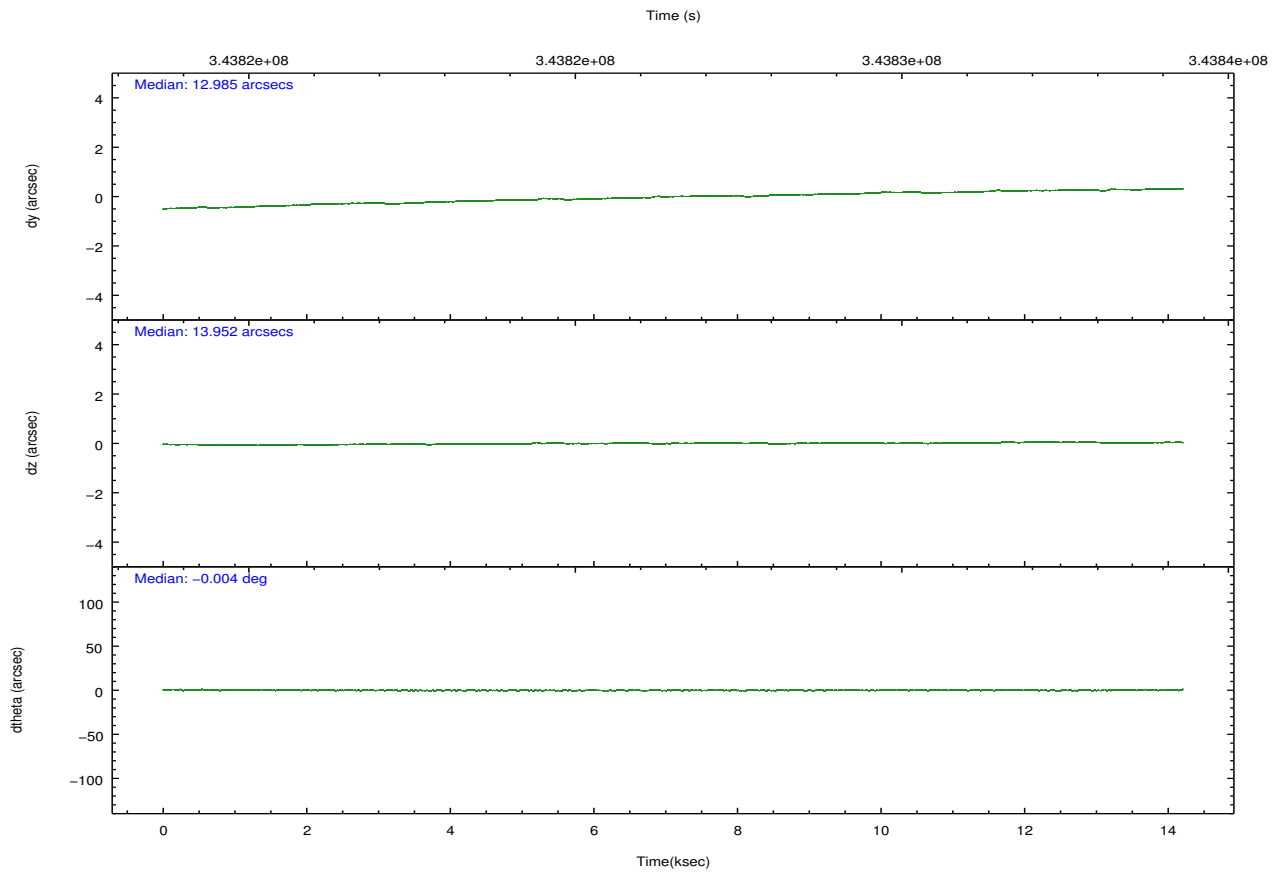
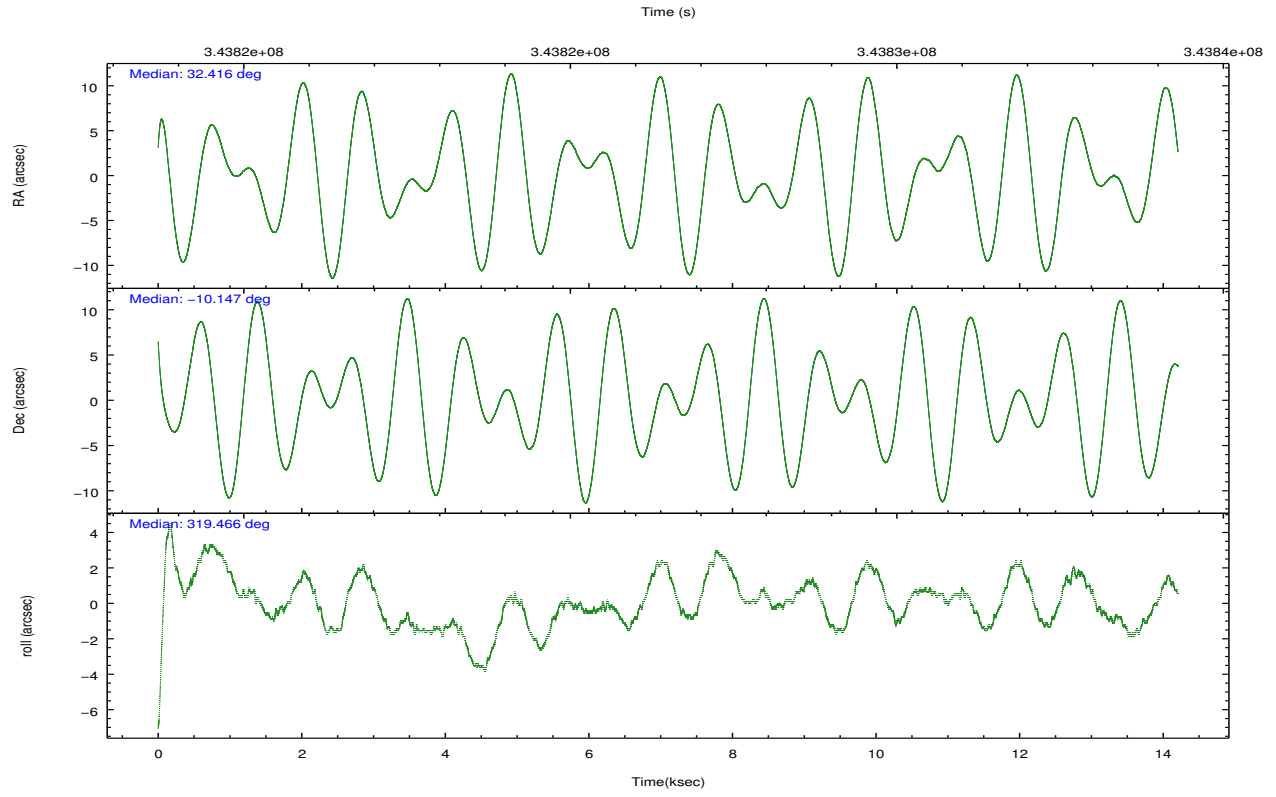
	<b>ccd 7</b>
grade 0 events	3755
	6%
grade 1 events	85
	0%
grade 2 events	6930
	11%
grade 3 events	3378
	5%
grade 4 events	3276
	5%
grade 5 events	6439
	10%
grade 6 events	14502
	24%
grade 7 events	22001
	36%

## 2.2 Compared Parameters

Parameter	Planned	Actual	Parameter	Planned	Actual
Instrument	ACIS	ACIS	Obspar format version number	7	7
Detector	ACIS-7	ACIS-7	Obspar file type	PREDICTED	ACTUAL
Grating	NONE	NONE	Obspar update status	NONE	UPDATED
Data mode	VFAINT	VFAINT	Number of optional ACIS chips dropped	0	0
Observation mode	POINTING	POINTING	On-chip summing requested	N	N
[deg] Pointing RA	32.388321	32.41571839625165	Subarray requested	CUSTOM	1/2
[deg] Pointing Dec	-10.142226	-10.14685168867647	Subarray start row	257	257
[deg] Pointing Roll	319.306923	319.4683711511271	Subarray row count	512	512
[mm] SIM focus pos	-0.684267	-0.6828225247311905	Alternating exposures requested	N	N
[mm] SIM defocus	0	0.001444936568705701	[s] Primary exposure time	0.000000	1.5
[mm] SIM translation stage pos	-190.132523	-190.145094680475			
[mm] SIM translation stage offset	0	0.01257209746719923			
[s] Observation start time (MET)	343819558.184000	343818223.10775			
Observation start date	2008-11-23T09:24:53	2008-11-23T09:03:43			
[s] Observation end time (MET)	343833597.184000	343833817.45852			
Observation end date	2008-11-23T13:18:52	2008-11-23T13:23:37			
Read mode	TIMED	TIMED			

## 2.3 Aspect



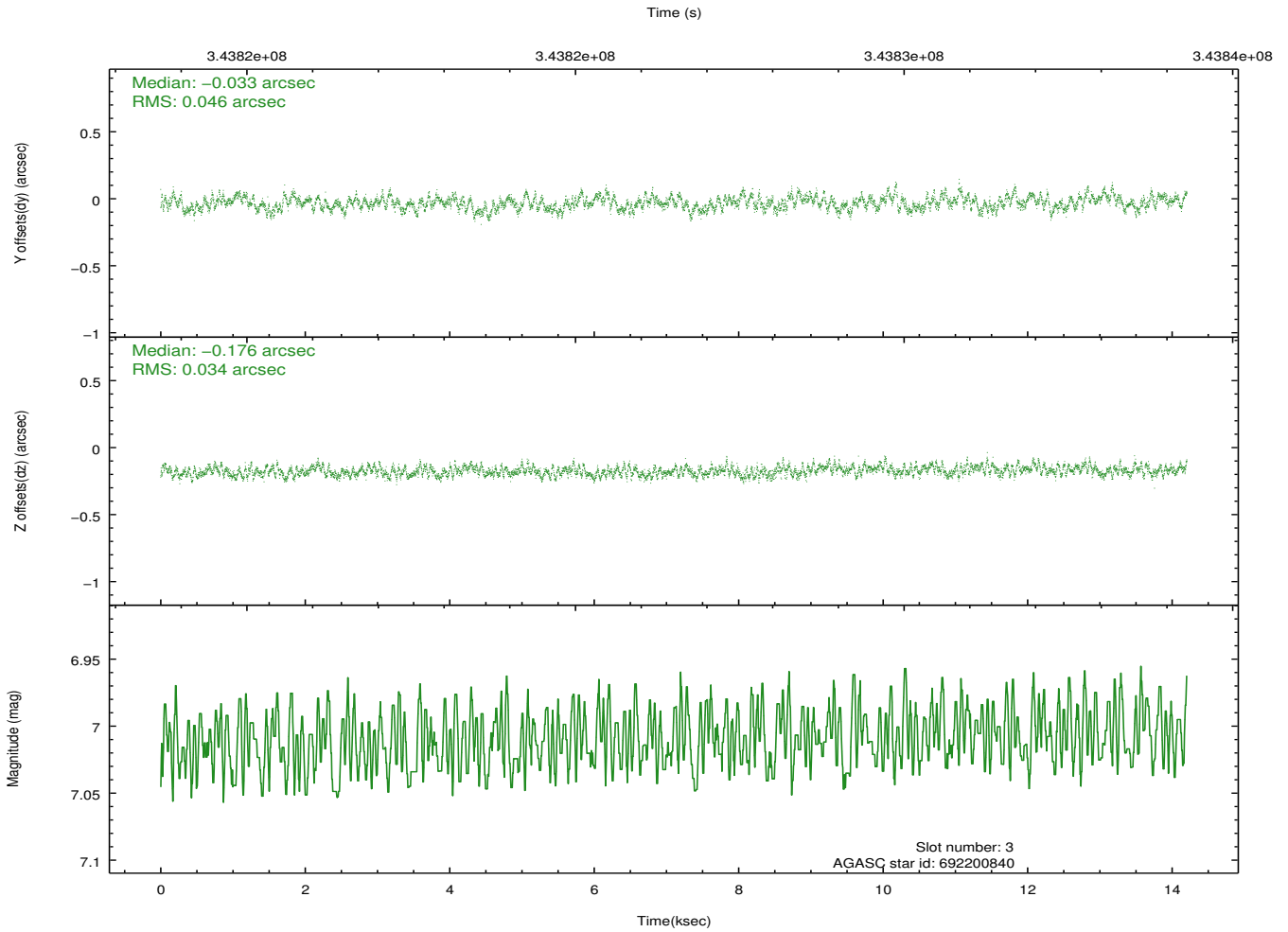
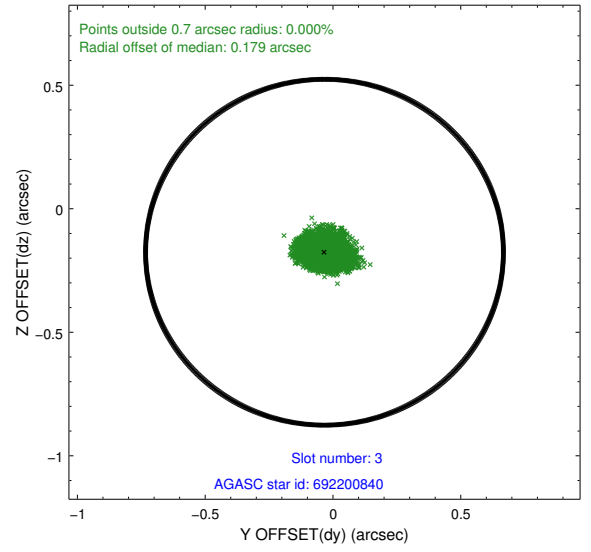
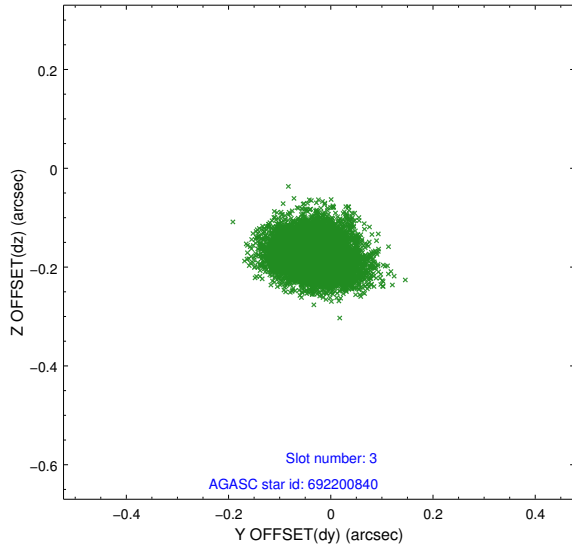


### Slot Statistics

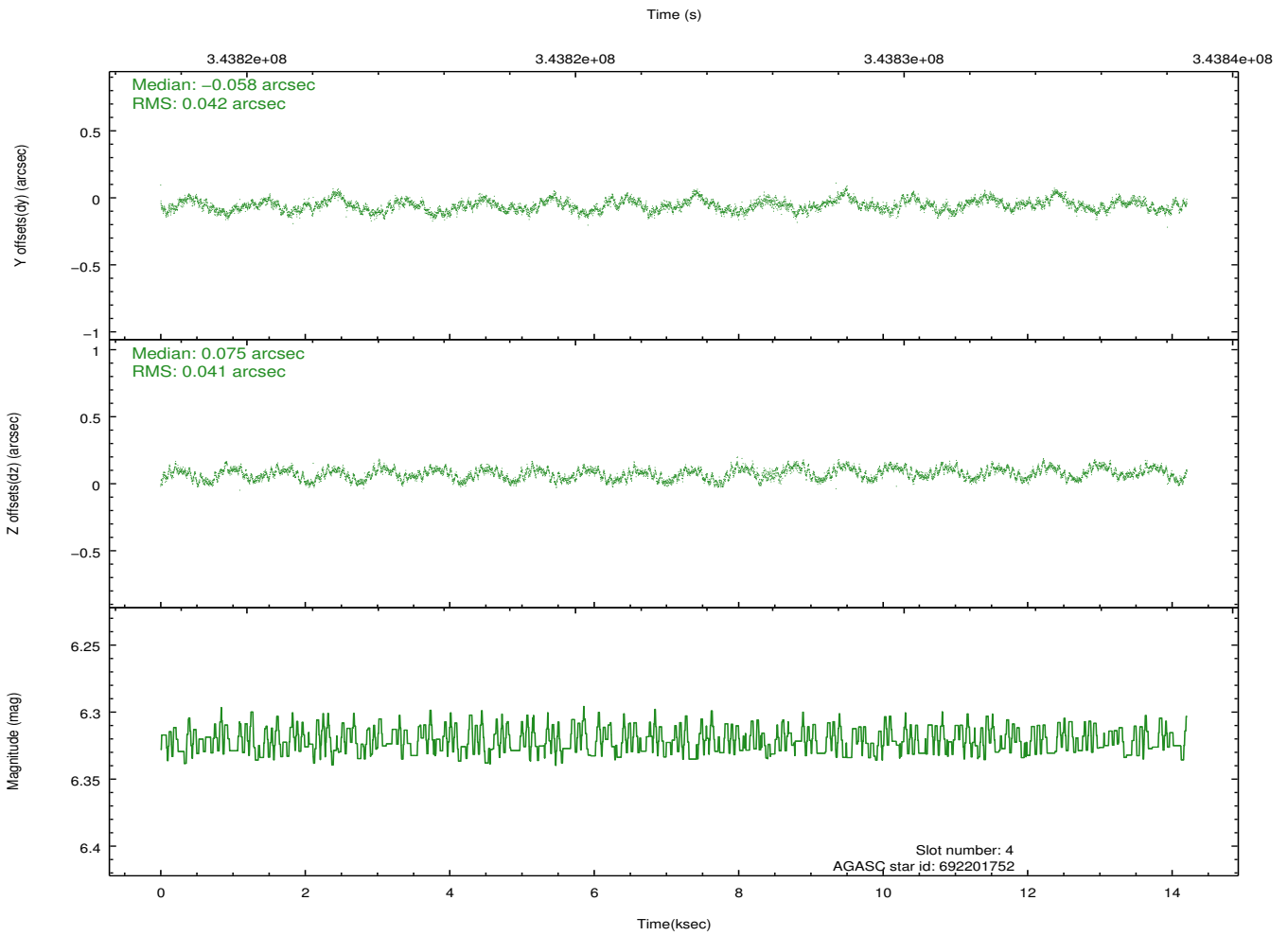
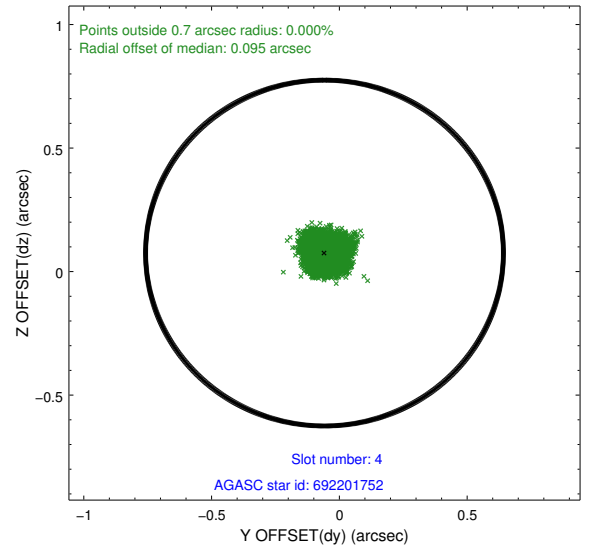
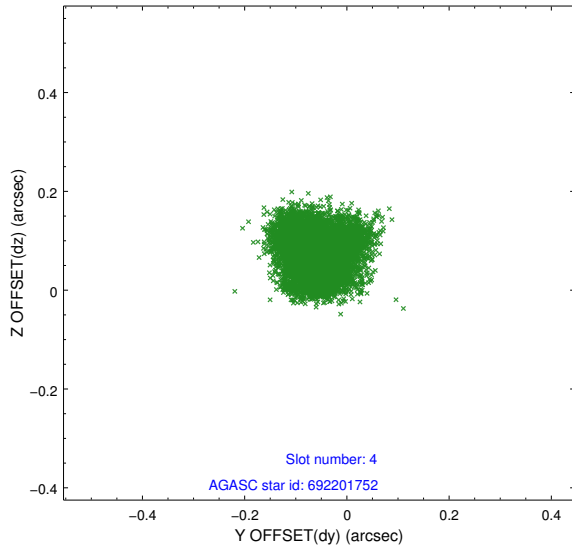
slot	status	id	mag	n_pts	med_dy	med_dz	dr1	dr2	ra	dec	mean_y	mean_z
0	FID	ACIS-S-2	6.94	3465	-0.031	-0.044	0.009	0.014	0.000000	0.000000	-765.88	-1735.24
1	FID	ACIS-S-4	7.03	3465	0.156	0.027	0.010	0.017	0.000000	0.000000	2147.43	172.98
2	FID	ACIS-S-5	7.07	3465	-0.157	0.026	0.009	0.015	0.000000	0.000000	-1818.44	167.02
3	GUIDE	692200840	7.01	6931	-0.033	-0.176	0.061	0.097	31.544710	-10.276216	-1948.01	-2317.22
4	GUIDE	692201752	6.32	6931	-0.058	0.075	0.064	0.097	31.523790	-10.212592	-2154.52	-2192.68
5	GUIDE	692205768	8.18	6926	0.092	0.020	0.062	0.101	32.434117	-10.419931	774.82	-652.47
6	GUIDE	692207400	8.26	6930	-0.031	-0.016	0.071	0.116	32.382891	-9.868805	-656.06	733.86
7	GUIDE	692207496	7.36	6930	0.024	0.098	0.072	0.116	32.082363	-10.041338	-1058.33	-431.58

## 2.4 Star Slots

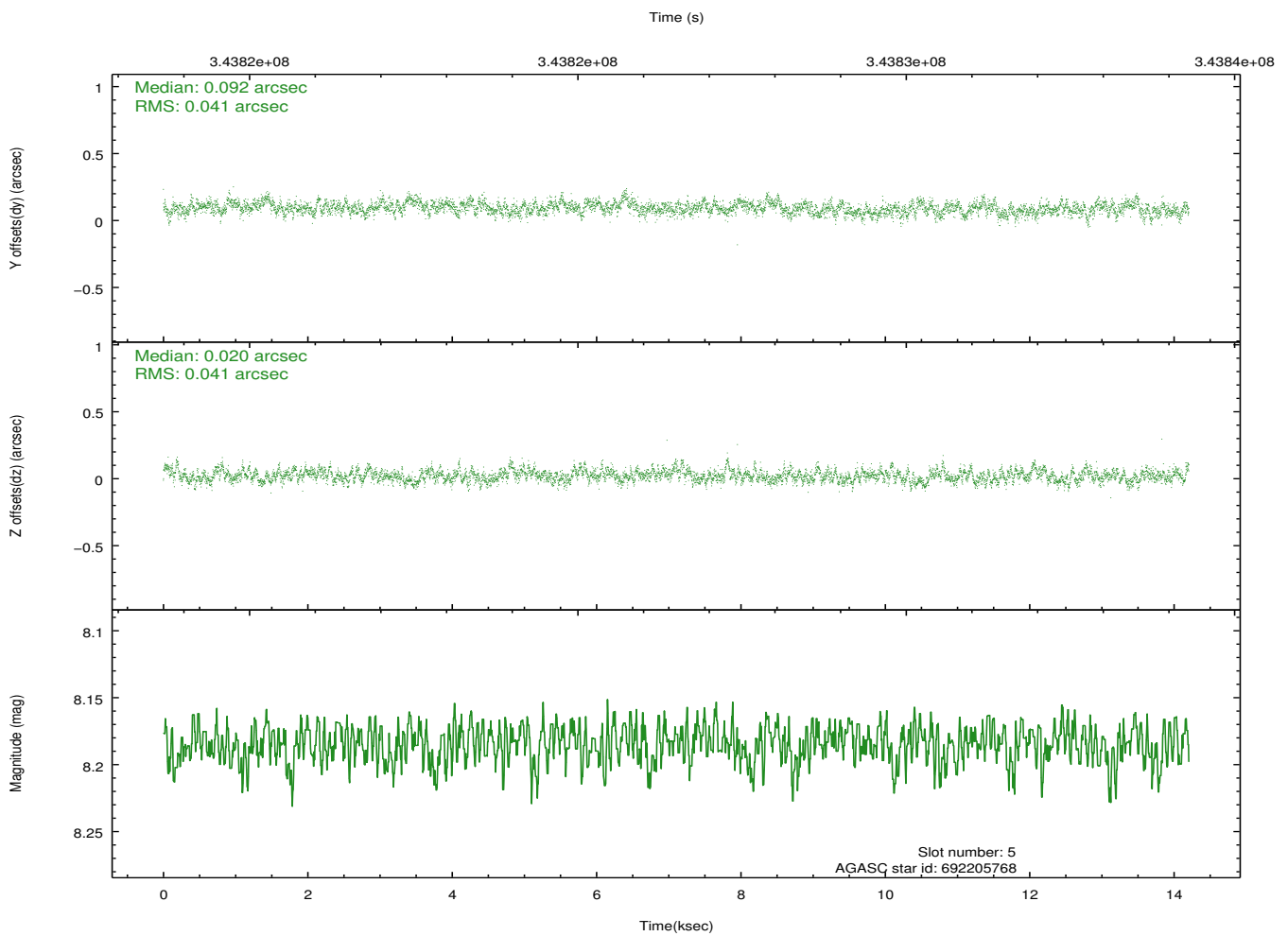
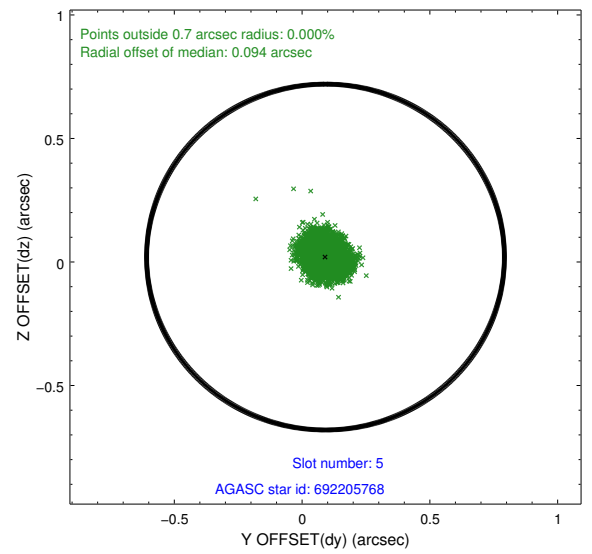
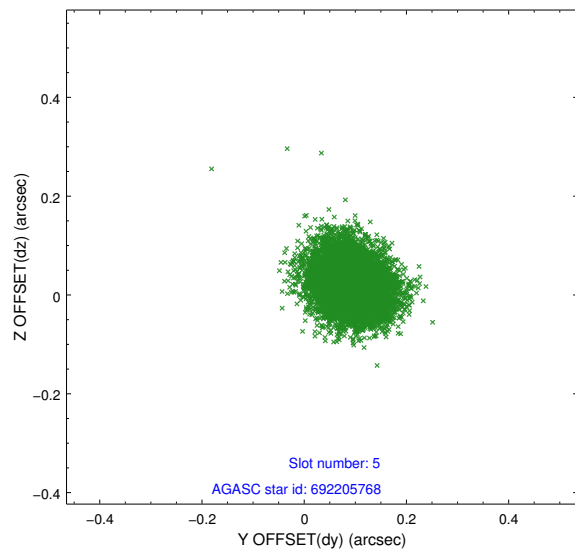
### 2.4.1 Slot 3



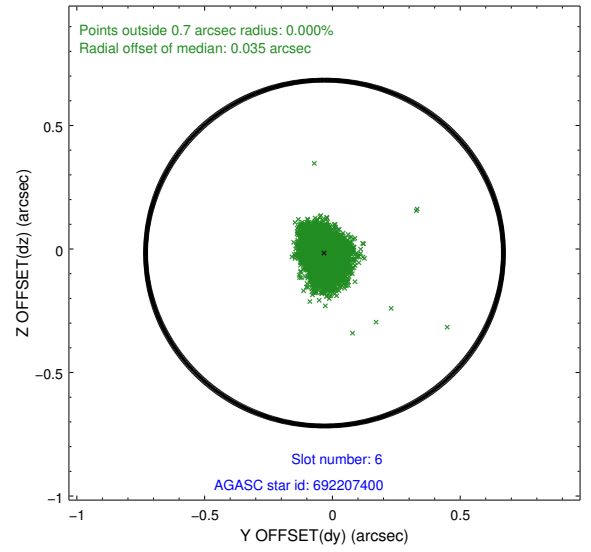
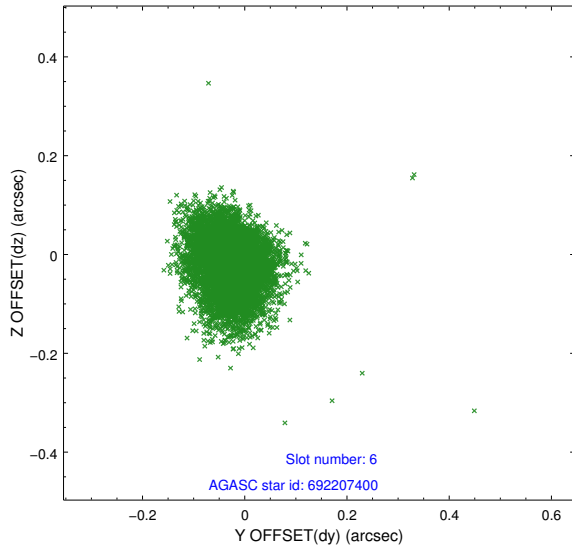
### 2.4.2 Slot 4



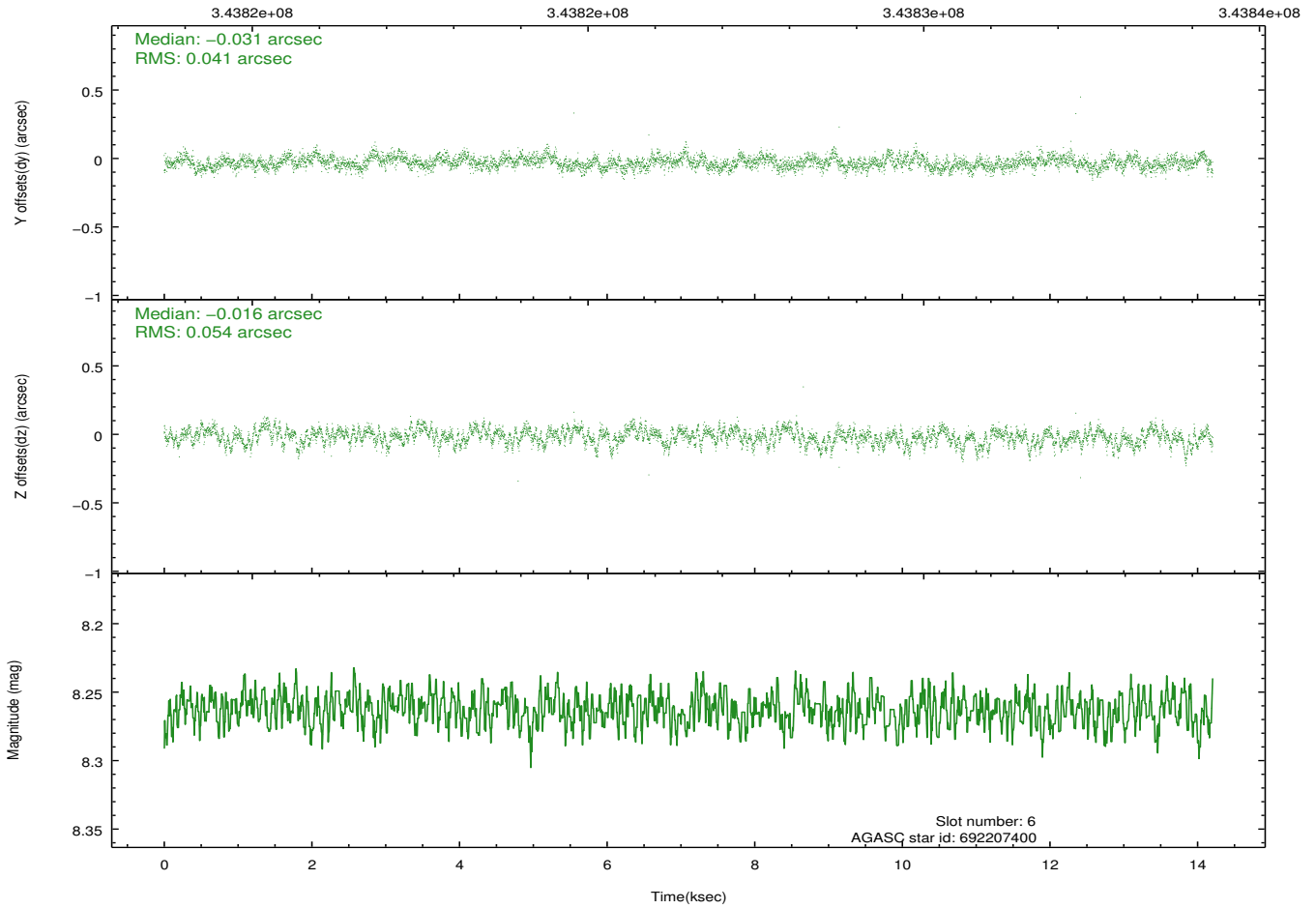
### 2.4.3 Slot 5



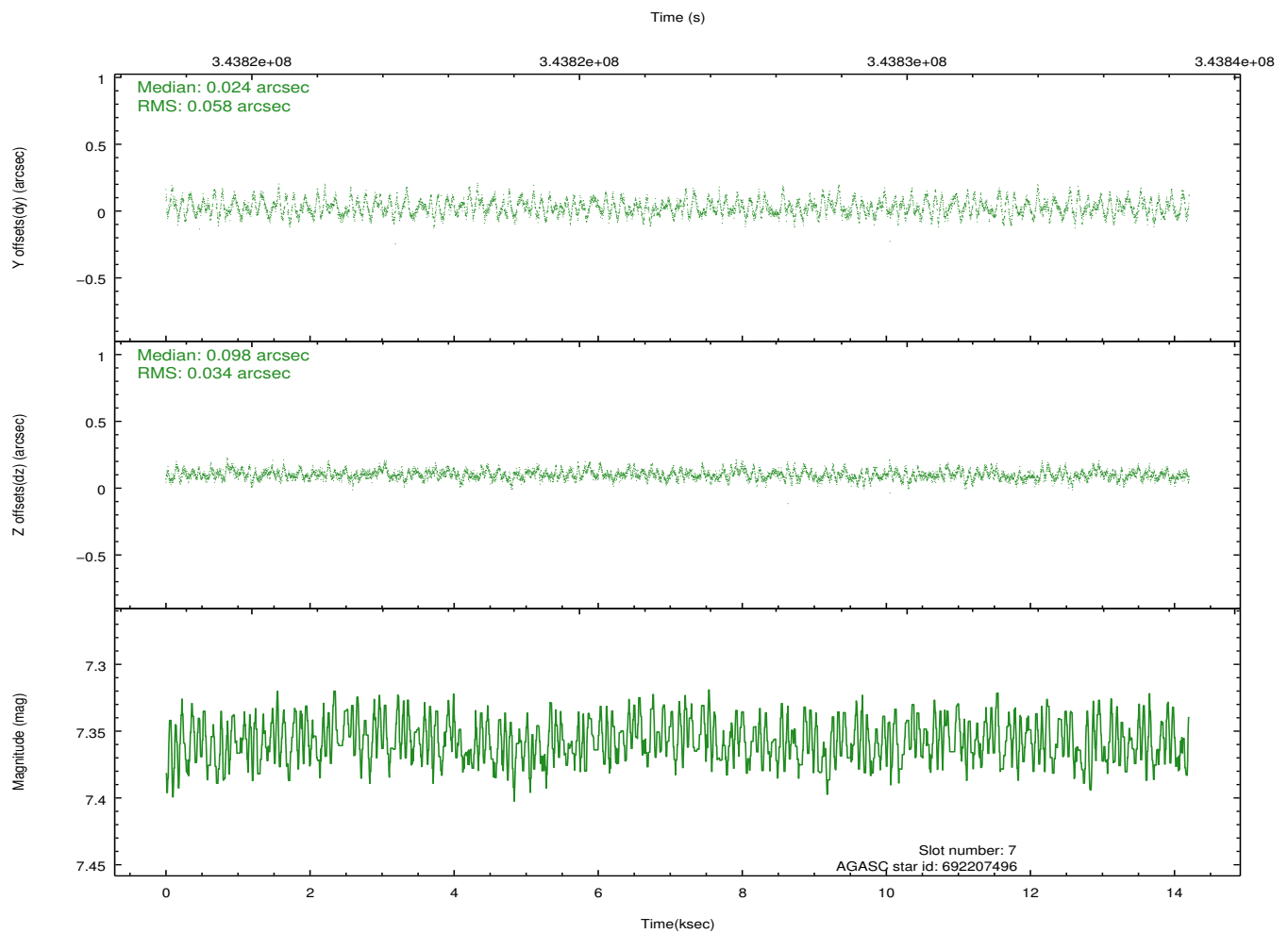
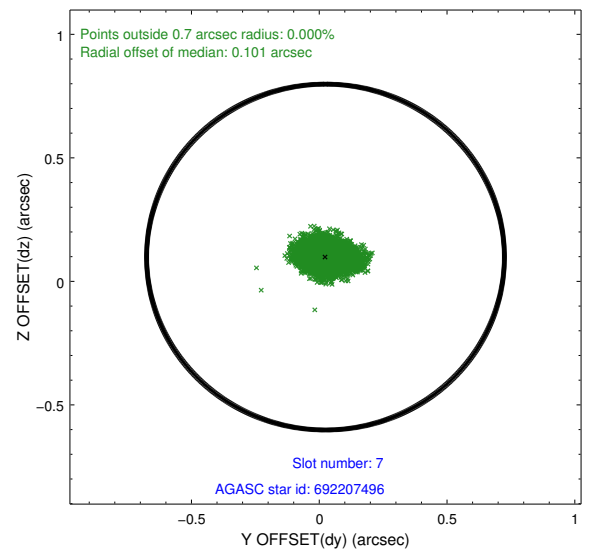
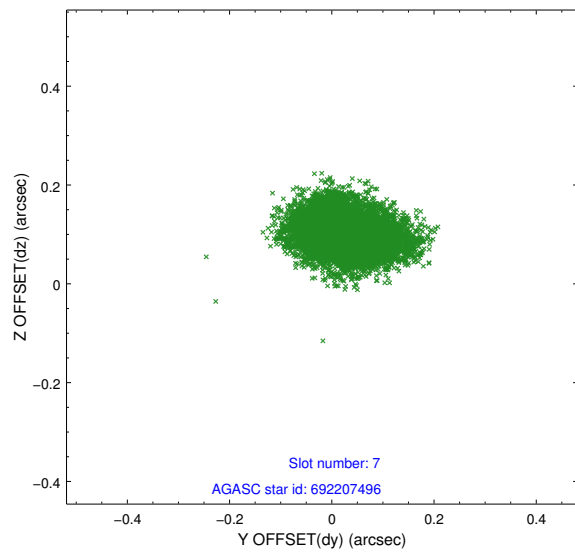
## 2.4.4 Slot 6



Time (s)

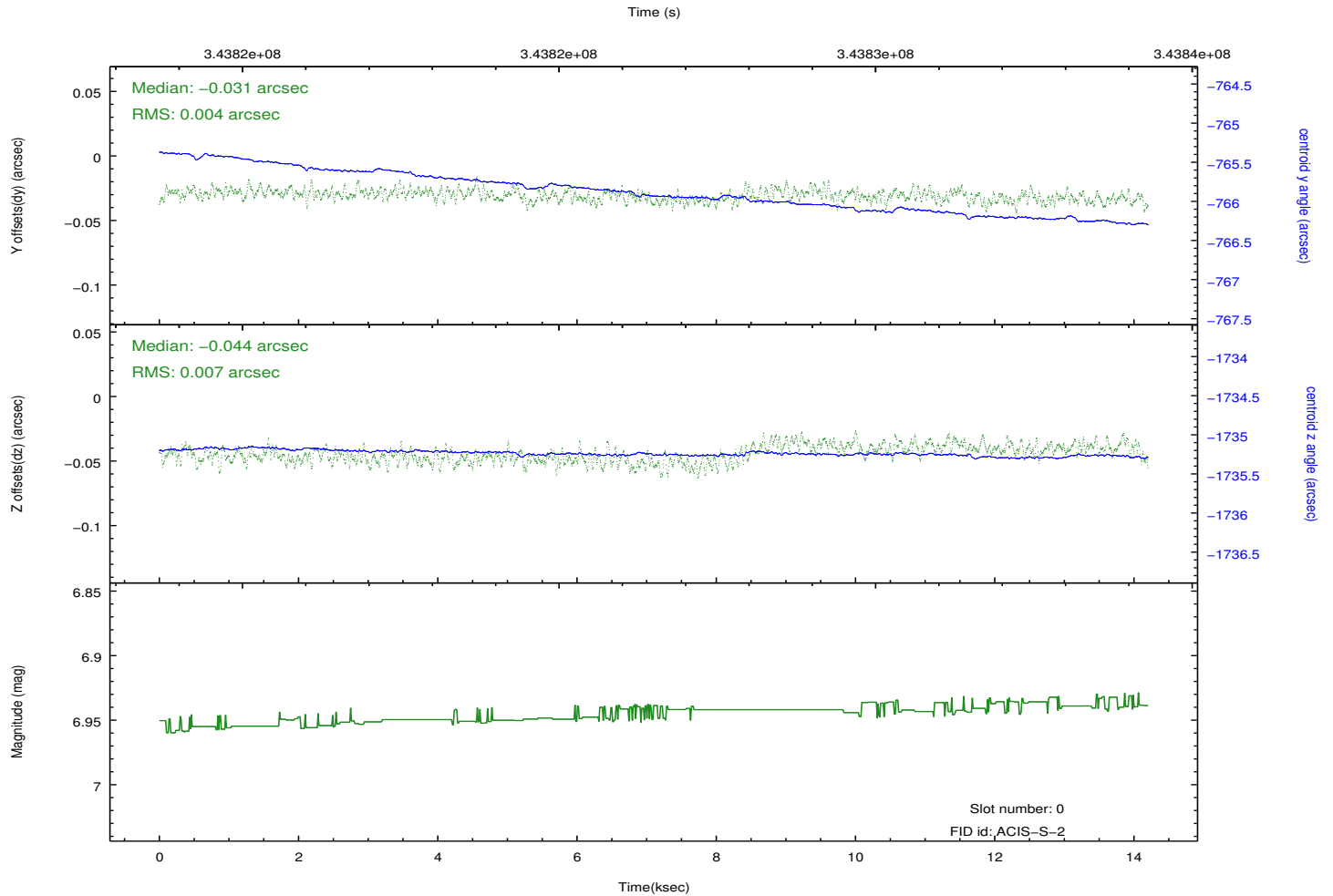
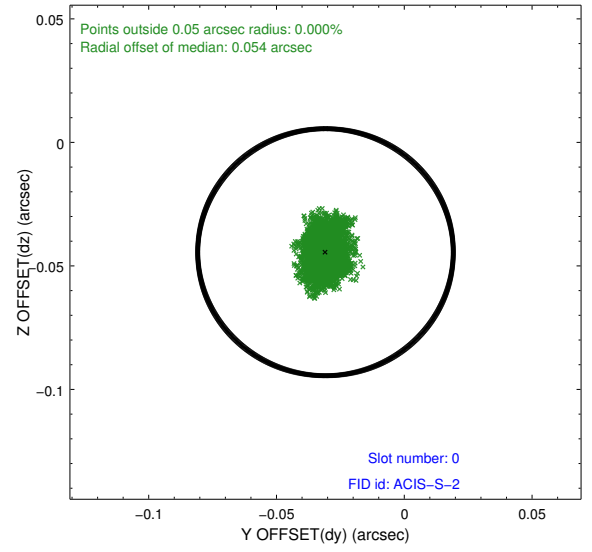
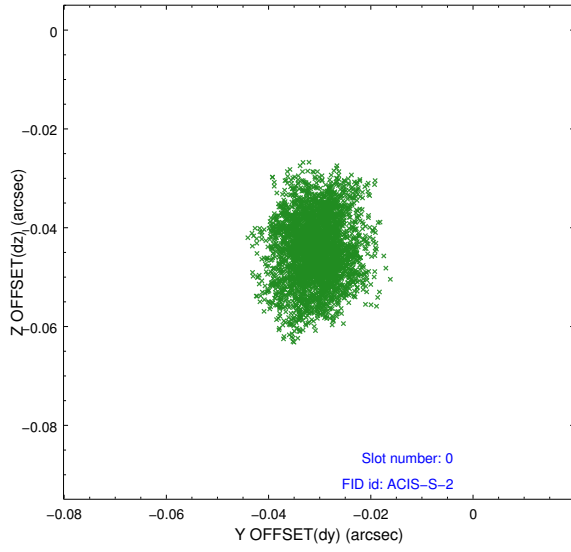


## 2.4.5 Slot 7

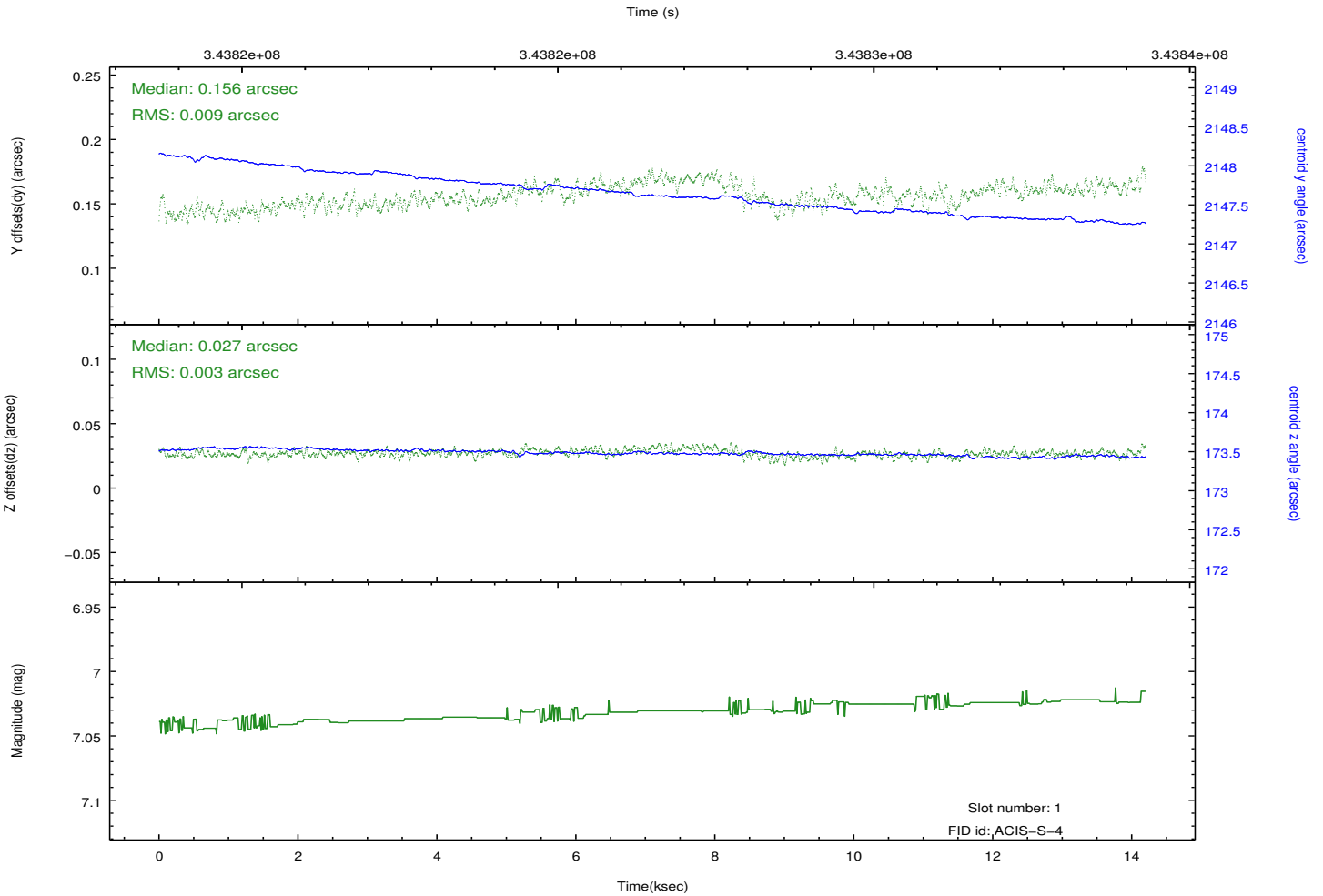
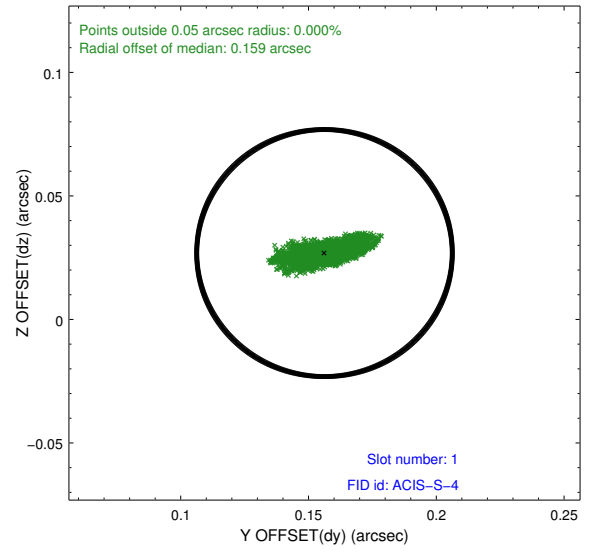
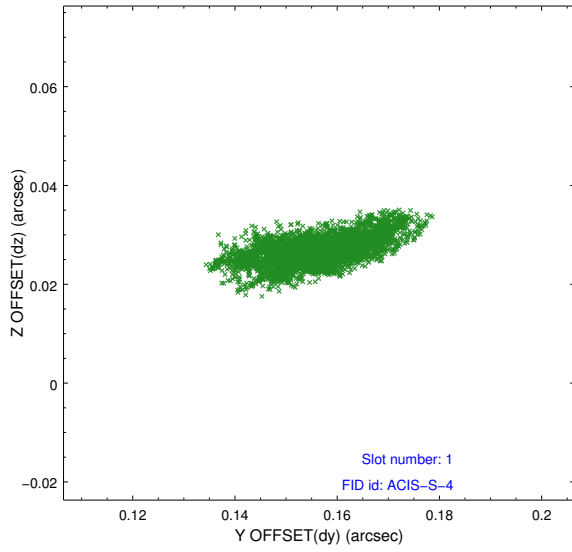


## 2.5 FID Slots

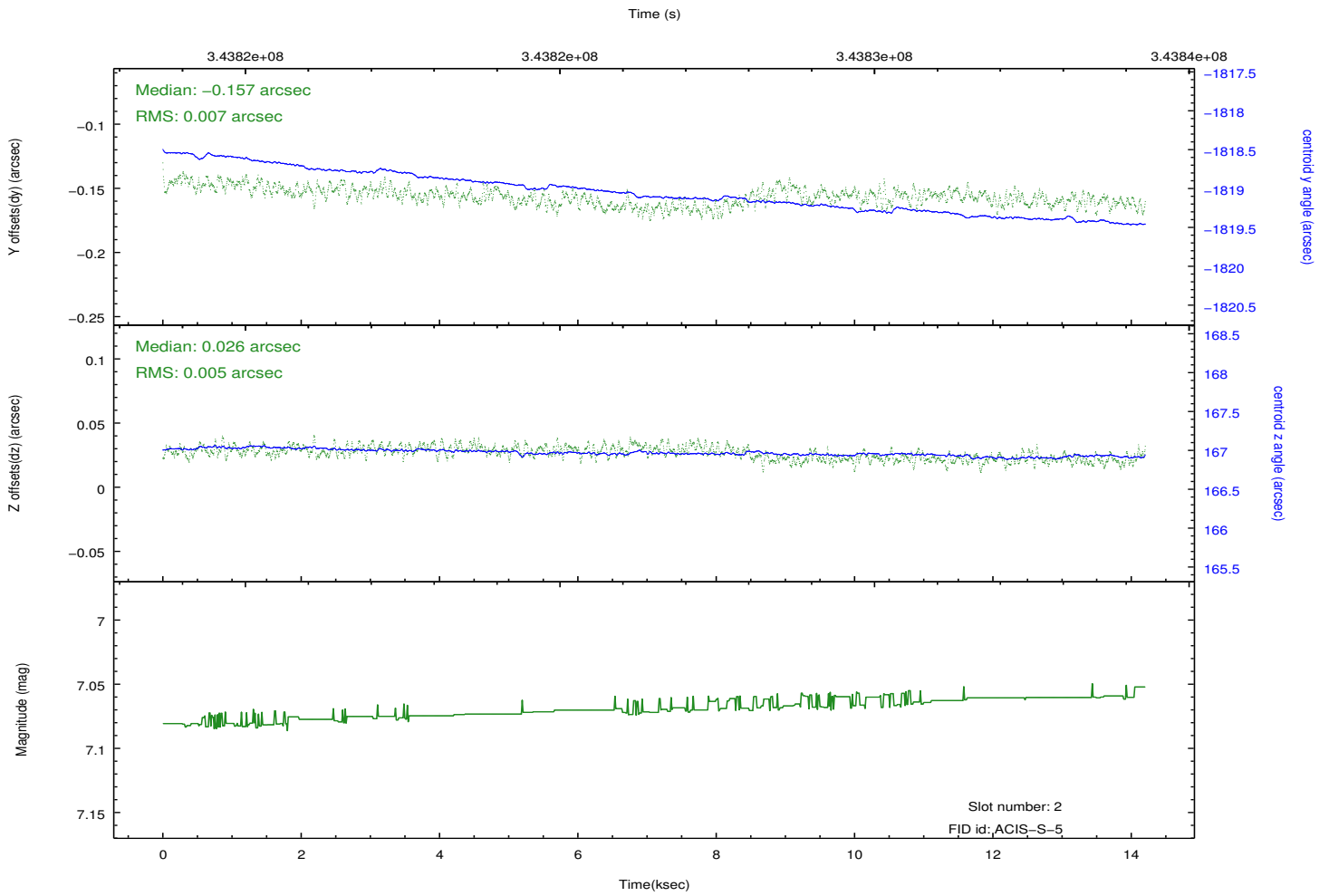
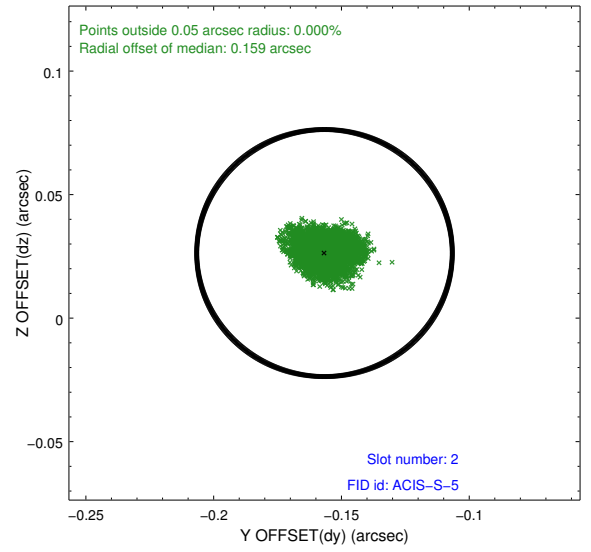
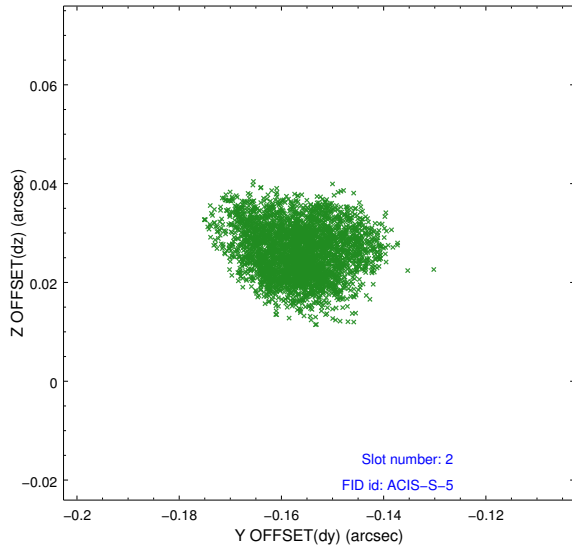
### 2.5.1 Slot 0



## 2.5.2 Slot 1



### 2.5.3 Slot 2



# A Summary

## A.1 Status

V&V Scientist	Beth Sundheim
V&V Date (YYYY-MM-DD)	2012.05.31
V&V Edition	1
V&V Disposition and Status	OK
V&V Charge Time	14.202

## A.2 Comments