

V&V Reference Report

L2 ASCDS Version : 8.4.5

Observation 10444 - L2 Version 2
Chandra X-Ray Center

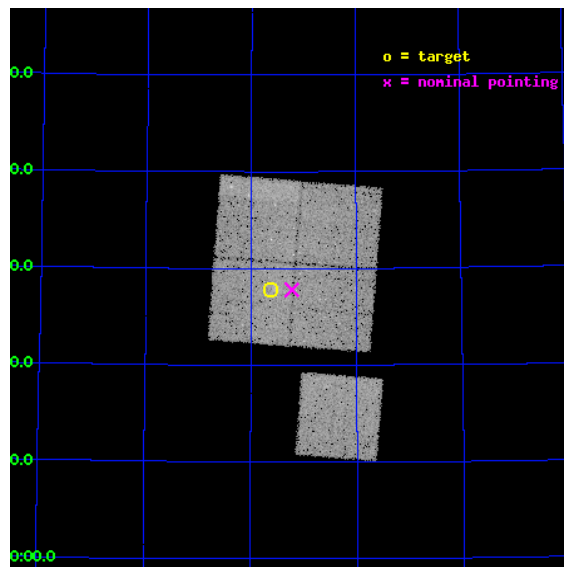
L2 Processing Date : Jun 9 2012

Contents

1	Front	2
2	OBI	3
2.1	OBI	3
2.1.1	Images	3
2.1.2	Bias	3
2.1.3	Parameters	4
2.1.4	Events	4
2.2	Compared Parameters	5
2.3	Aspect	6
2.4	Star Slots	9
2.4.1	Slot 3	9
2.4.2	Slot 4	10
2.4.3	Slot 5	11
2.4.4	Slot 6	12
2.4.5	Slot 7	13
2.5	FID Slots	14
2.5.1	Slot 0	14
2.5.2	Slot 1	15
2.5.3	Slot 2	16
A	Summary	17
A.1	Status	17
A.2	Comments	17

1 Front

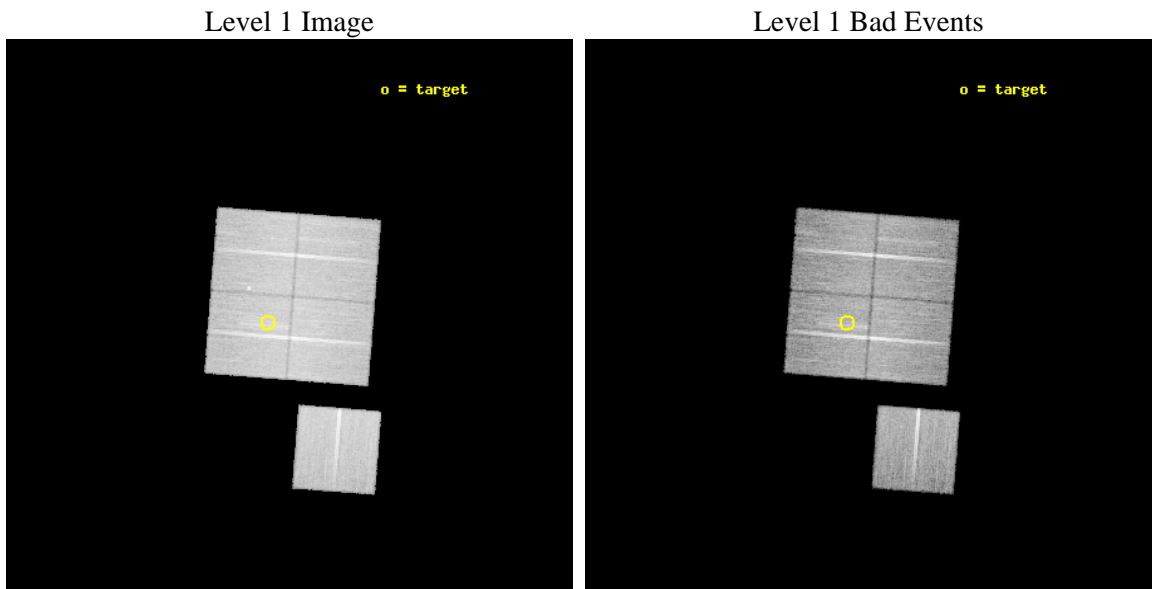
seq_num	800805	Sequence number
obs_id	10444	Observation id
title	Local versus Large Scale : The Active Galaxy Population in High-Redshift Clusters	Proposal title
observer	Prof Lori Lubin	Principal investigator
object	RX J1821.6+6827	Source name
dtcycle	0	
cycle	P	events from which exps? Prim/Second/Both
ra_targ	275.40875	Observer's specified target RA [deg]
dec_targ	68.464444	Observer's specified target Dec [deg]
ra_nom	275.30591870764	Nominal RA [deg]
dec_nom	68.463372069679	Nominal Dec [deg]
roll_nom	184.50434056154	Nominal Roll [deg]
revision	2	Processing version of data
ontime	22536.959193051	Sum of GTIs [s]
livetime	22242.497229726	Livetime [s]
ontime0	22533.818242669	Sum of GTIs [s]
ontime1	22540.100173354	Sum of GTIs [s]
ontime2	22533.818252683	Sum of GTIs [s]
ontime3	22536.959193051	Sum of GTIs [s]
ontime6	22540.100173354	Sum of GTIs [s]
l2events	84690	Number of level 2 events



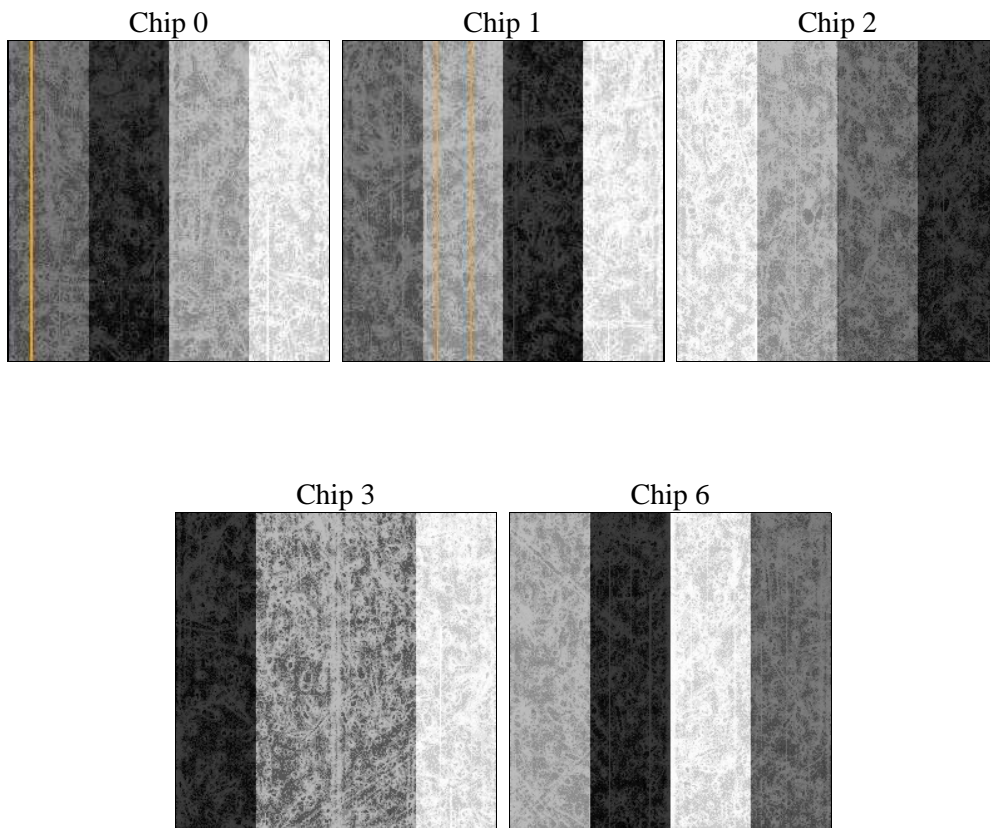
2 OBI

2.1 OBI

2.1.1 Images



2.1.2 Bias



2.1.3 Parameters

obi_num	0	Obi number	sched_exp_time	22500.000000	[s] Scheduled observation exposure time
ascdsver	8.4.5	Processing system revision	ontime	22536.959193051	Sum of GTIs [s]
caldbver	4.4.10	 	ontime0	22533.818242669	Sum of GTIs [s]
date	2012-06-09T22:08:03	Date and time of file creation	ontime1	22540.100173354	Sum of GTIs [s]
revision	2	Processing version of data	ontime2	22533.818252683	Sum of GTIs [s]
			ontime3	22536.959193051	Sum of GTIs [s]
			ontime6	22540.100173354	Sum of GTIs [s]
			l1events	972498	Number of level 1 events

2.1.4 Events

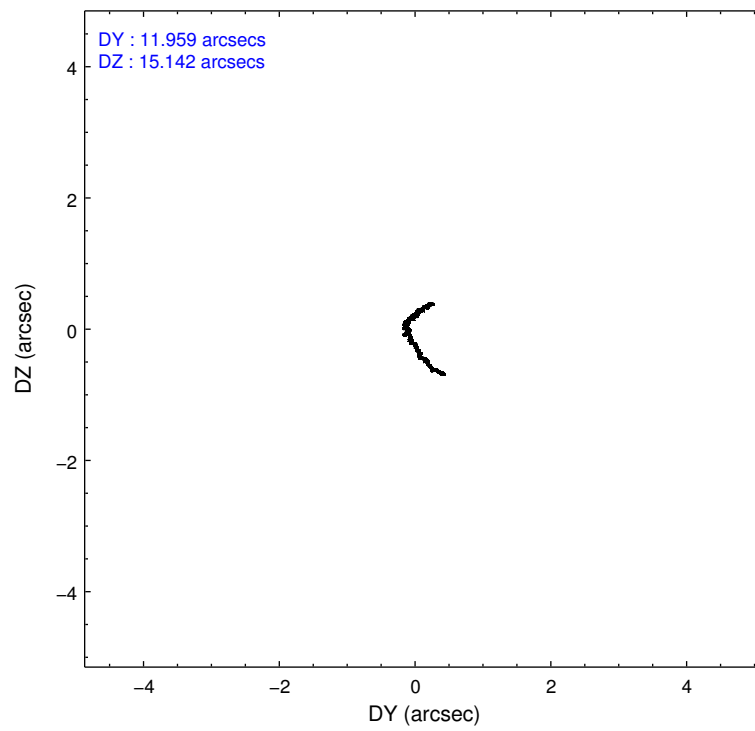
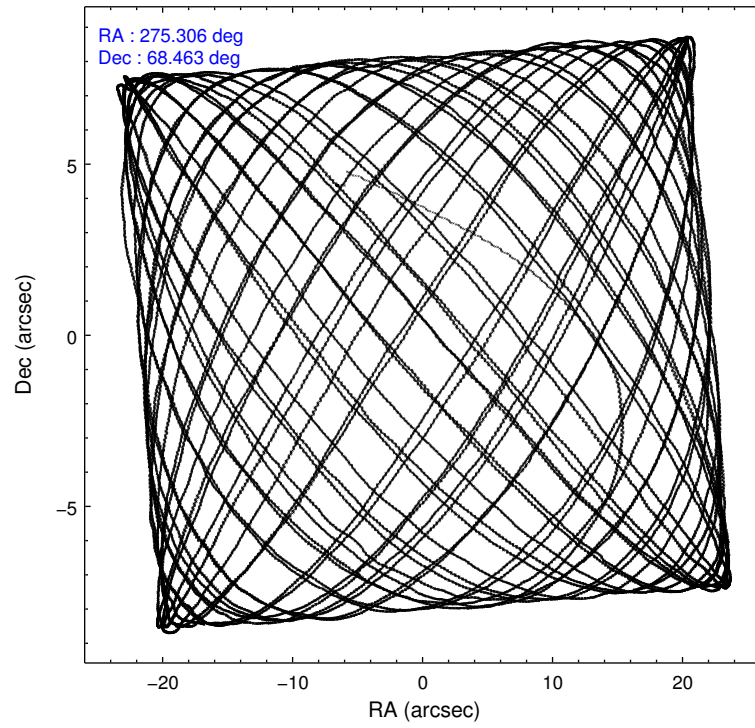
	ccd 0	ccd 1	ccd 2	ccd 3	ccd 6
level 1 events	184811	189133	204294	197033	197227
rejected events	164862	165331	184675	177786	177228
rejected %	89%	87%	90%	90%	89%

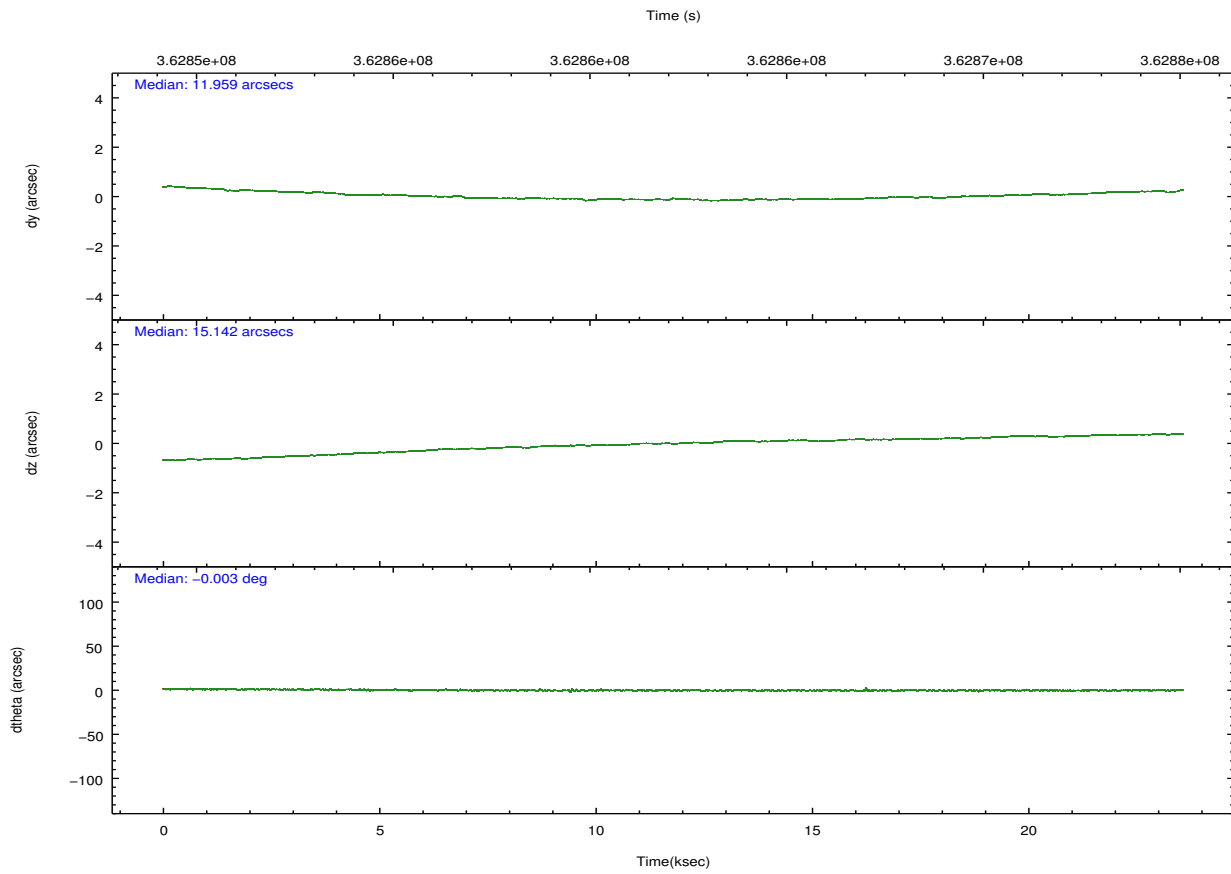
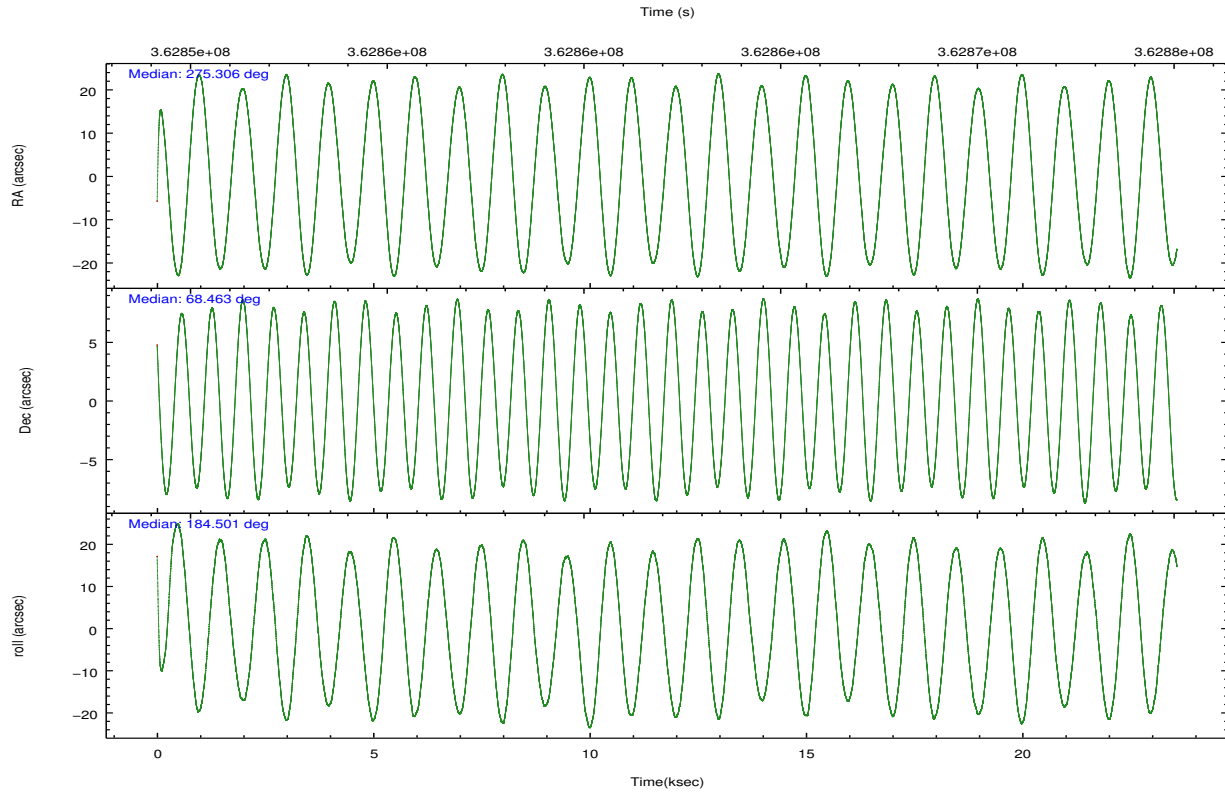
	ccd 0	ccd 1	ccd 2	ccd 3	ccd 6
grade 0 events	6943	9228	7037	6880	6882
	3%	4%	3%	3%	3%
grade 1 events	98	149	112	112	88
	0%	0%	0%	0%	0%
grade 2 events	4899	5383	4645	4302	4489
	2%	2%	2%	2%	2%
grade 3 events	2156	2301	2092	2075	2207
	1%	1%	1%	1%	1%
grade 4 events	2076	2335	2138	2110	2076
	1%	1%	1%	1%	1%
grade 5 events	7099	7814	6862	8236	7760
	3%	4%	3%	4%	3%
grade 6 events	3879	4558	3712	3886	4348
	2%	2%	1%	1%	2%
grade 7 events	157661	157365	177696	169432	169377
	85%	83%	86%	85%	85%

2.2 Compared Parameters

Parameter	Planned	Actual	Parameter	Planned	Actual
Instrument	ACIS	ACIS	Obspar format version number	7	7
Detector	ACIS-01236	ACIS-01236	Obspar file type	PREDICTED	ACTUAL
Grating	NONE	NONE	Obspar update status	NONE	UPDATED
Data mode	VFAINT	VFAINT	CCD I0 on	Y	Y
Observation mode	POINTING	POINTING	CCD I1 on	Y	Y
[deg] Pointing RA	275.367573	275.3059187076415	CCD I2 on	Y	Y
[deg] Pointing Dec	68.479044	68.46337206967942	CCD I3 on	Y	Y
[deg] Pointing Roll	184.238295	184.5043405615422	CCD S0 on	N	N
[mm] SIM focus pos	-0.782348	-0.7809083437167272	CCD S1 on	N	N
[mm] SIM defocus	0	0.001439871863259334	CCD S2 on	O1	Y
[mm] SIM translation stage pos	-227.592463	-227.5933067819097	CCD S3 on	N	N
[mm] SIM translation stage offset	-6	-5.999146221020027	CCD S4 on	N	N
[s] Observation start time (MET)	362851397.184000	362849370.35295	CCD S5 on	N	N
Observation start date	2009-07-01T16:02:11	2009-07-01T15:29:30	Number of optional ACIS chips dropped	0	0
[s] Observation end time (MET)	362873897.184000	362874489.51671	On-chip summing requested	N	N
Observation end date	2009-07-01T22:17:11	2009-07-01T22:28:09	Subarray requested	NONE	NONE
Read mode	TIMED	TIMED	Alternating exposures requested	N	N
			[s] Primary exposure time	0.000000	3.1

2.3 Aspect



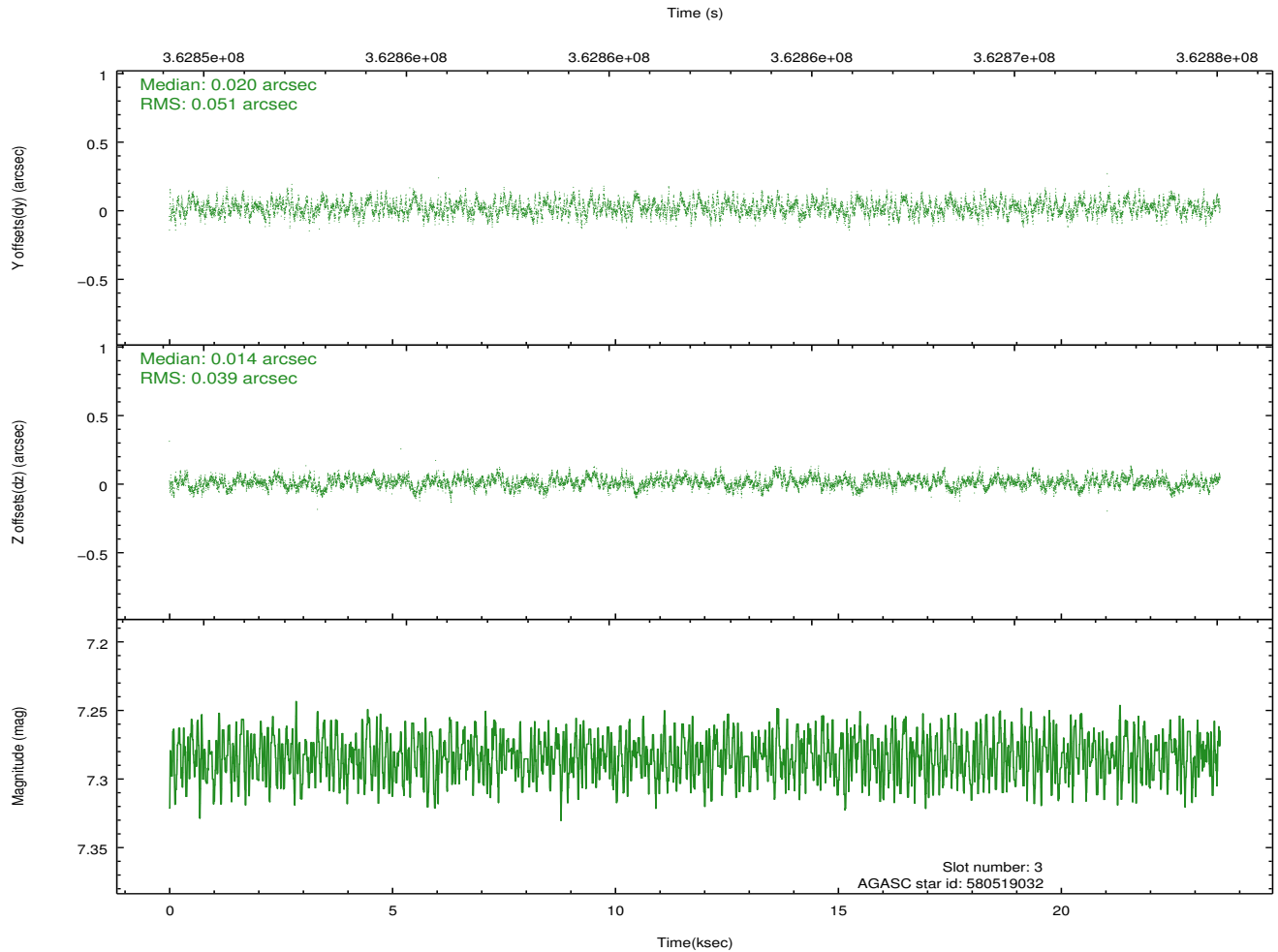
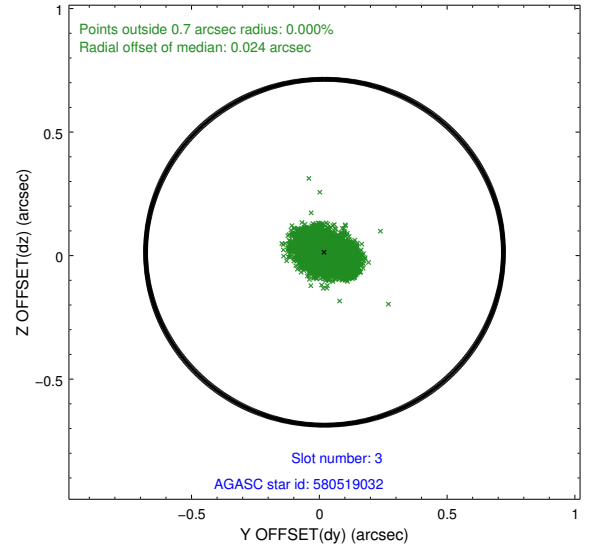
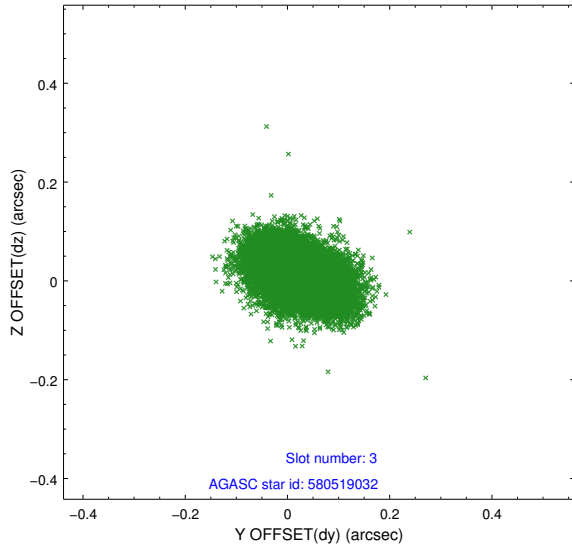


Slot Statistics

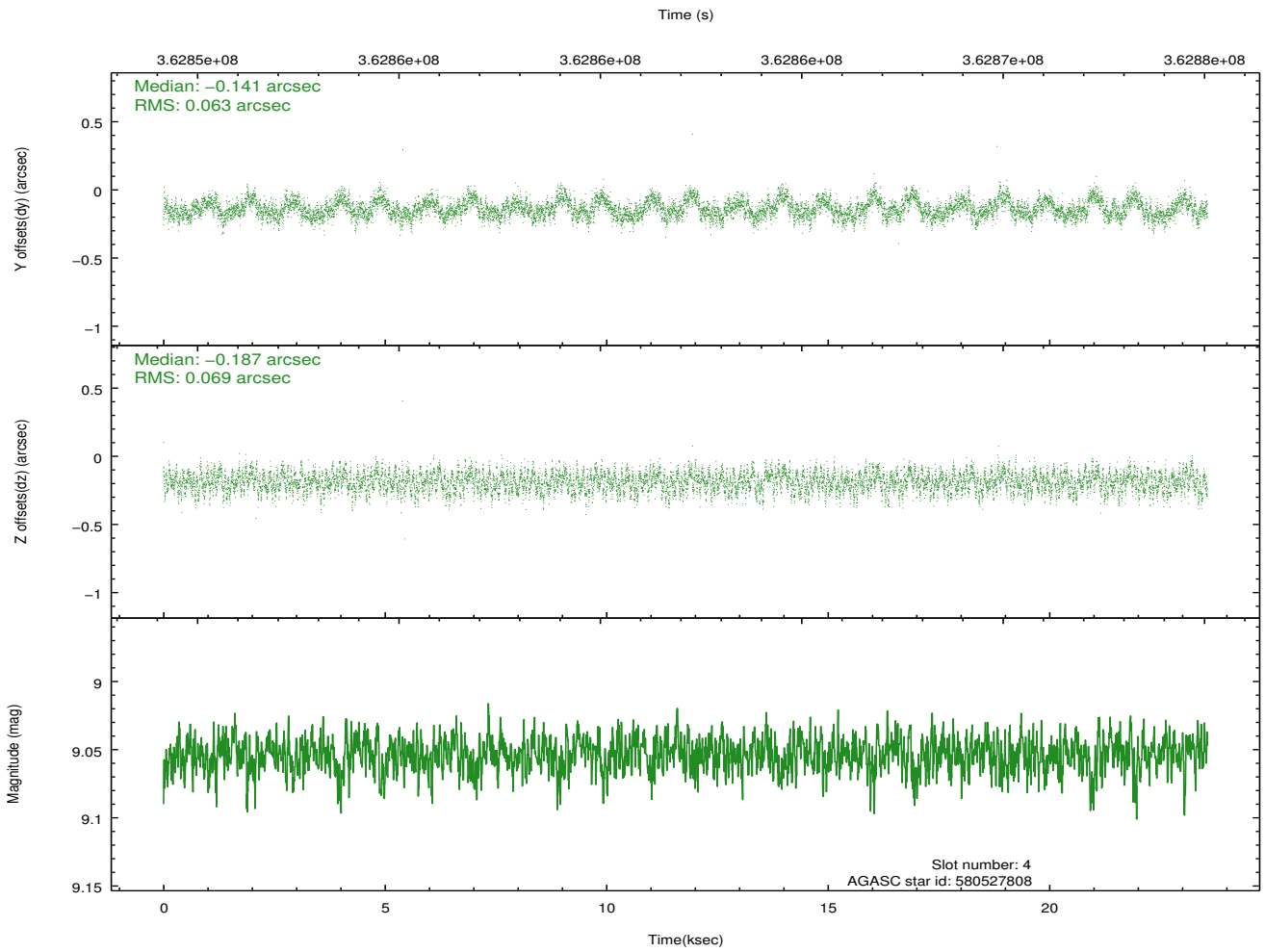
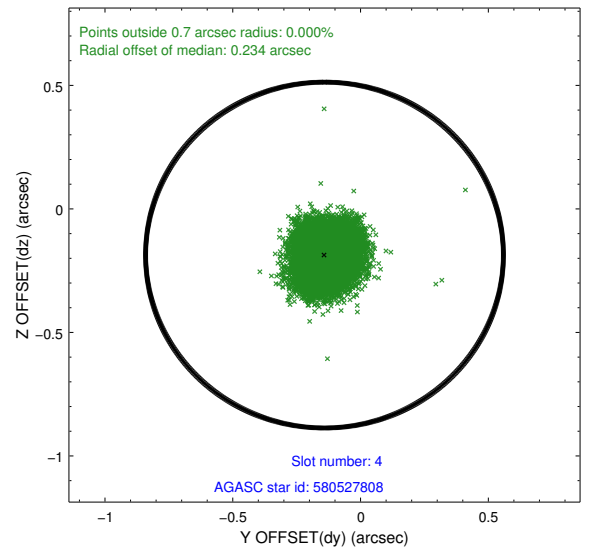
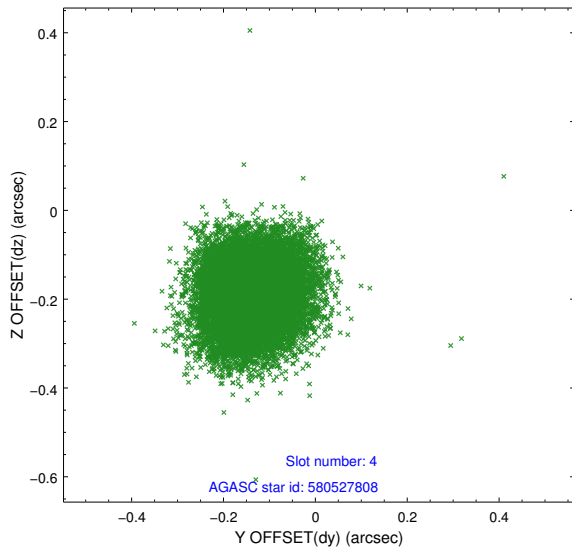
slot	status	id	mag	n_pts	med_dy	med_dz	dr1	dr2	ra	dec	mean_y	mean_z
0	FID	ACIS-I-1	7.03	5749	0.072	-0.023	0.008	0.015	0.000000	0.000000	927.53	-961.82
1	FID	ACIS-I-5	7.03	5749	-0.211	0.078	0.008	0.014	0.000000	0.000000	-1820.82	935.63
2	FID	ACIS-I-6	7.04	5749	0.047	0.015	0.008	0.013	0.000000	0.000000	392.85	1580.27
3	GUIDE	580519032	7.28	11497	0.020	0.014	0.068	0.112	274.244756	68.741454	1391.20	-1062.63
4	GUIDE	580527808	9.05	11489	-0.141	-0.187	0.100	0.157	275.209269	67.917117	363.20	2001.17
5	GUIDE	580662600	9.26	11426	0.139	0.131	0.088	0.143	276.240612	68.272757	-1105.69	818.79
6	GUIDE	580664400	9.08	11483	0.107	0.157	0.112	0.175	276.105004	69.097914	-1109.14	-2156.95
7	GUIDE	580532080	9.01	11482	-0.127	-0.104	0.108	0.170	274.203828	68.121720	1650.66	1152.72

2.4 Star Slots

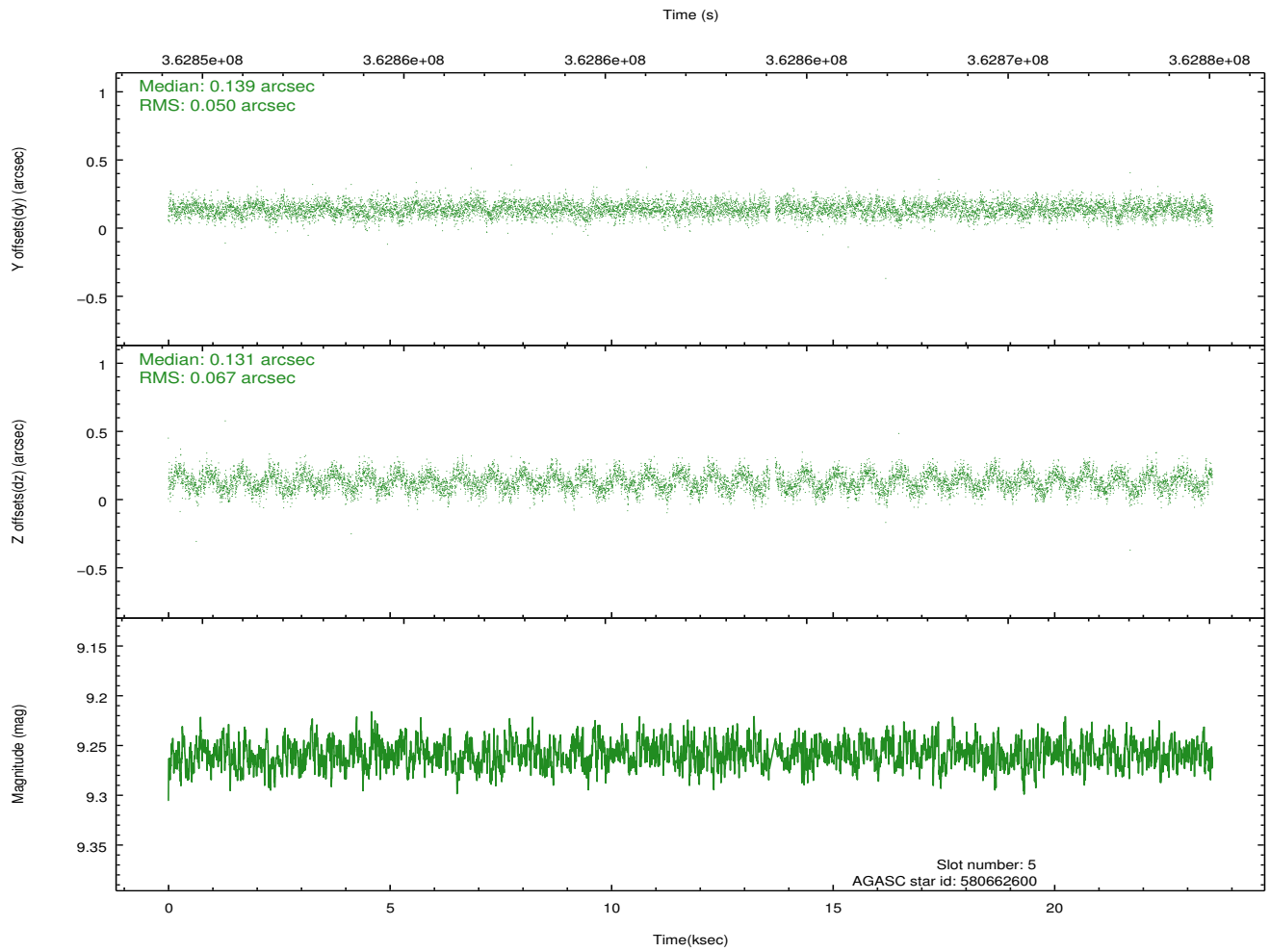
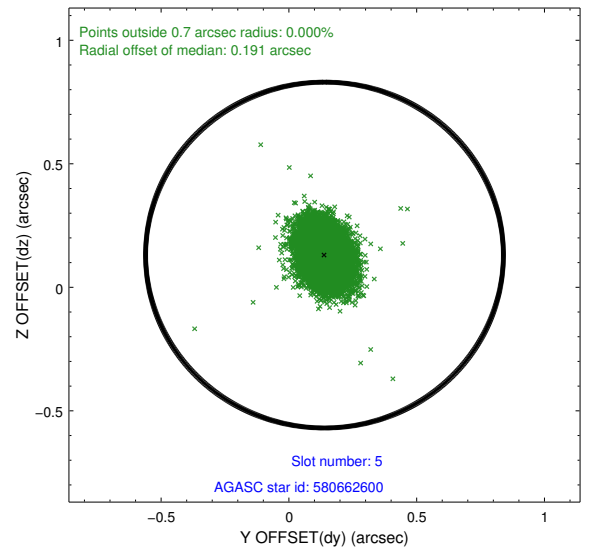
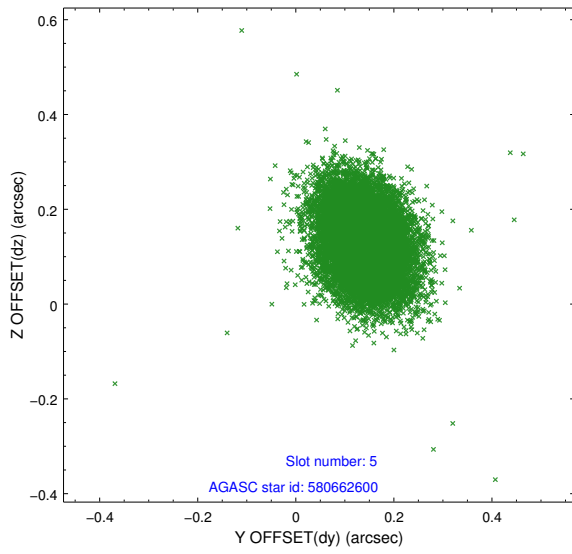
2.4.1 Slot 3



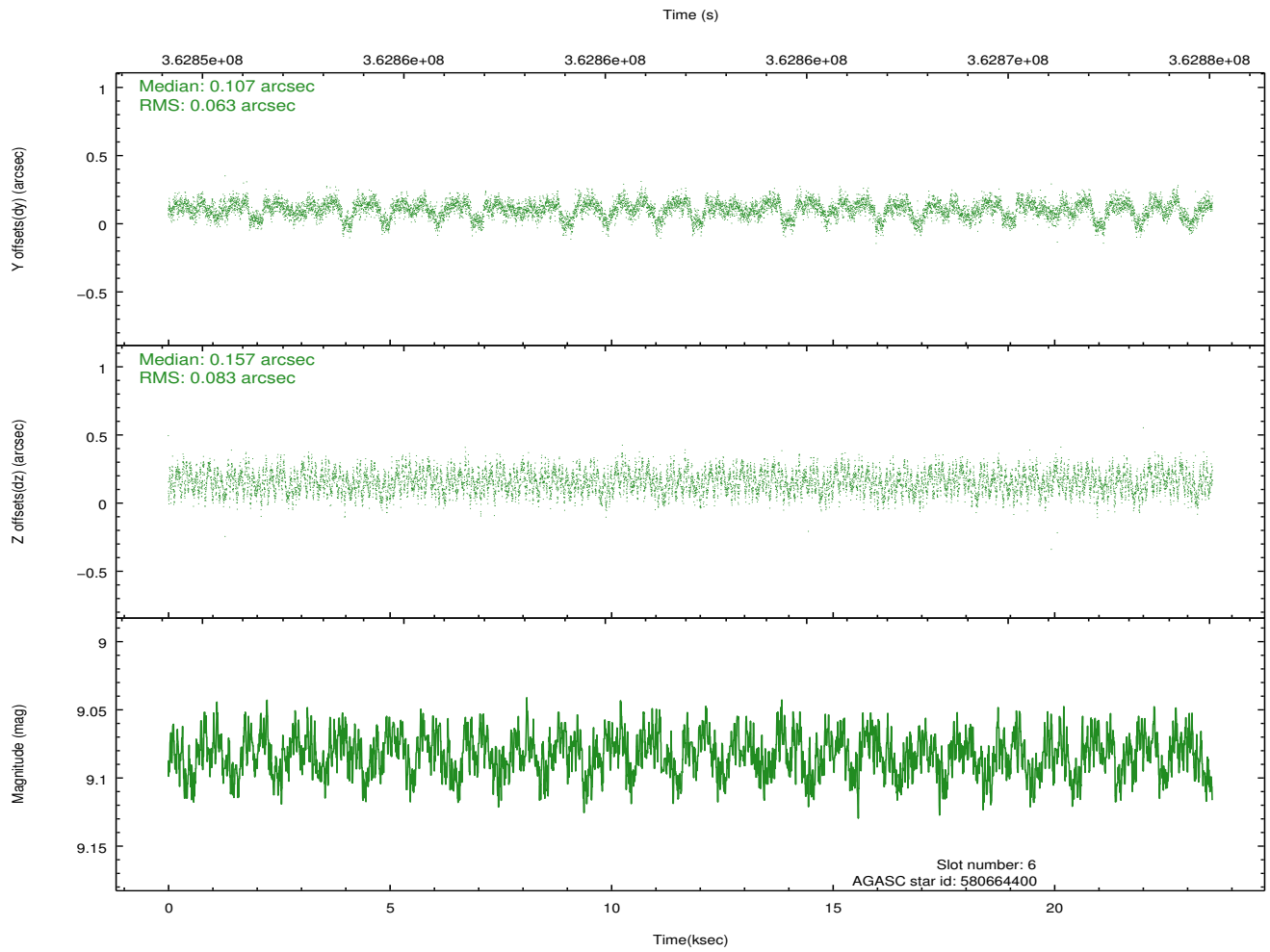
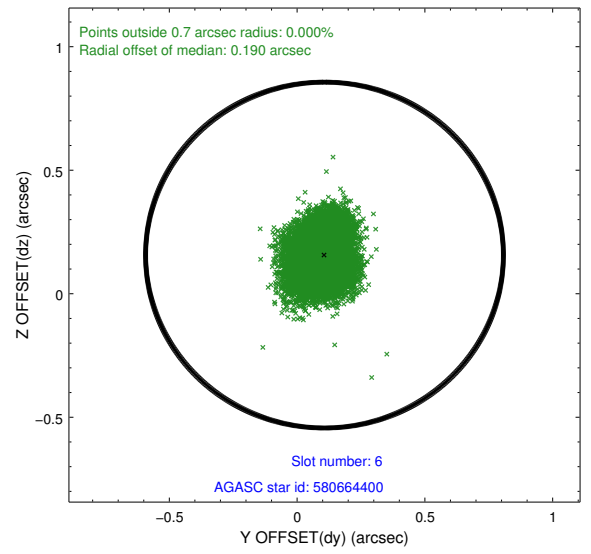
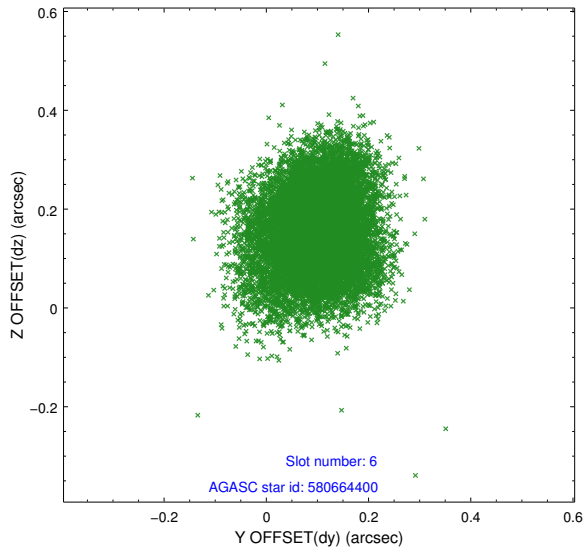
2.4.2 Slot 4



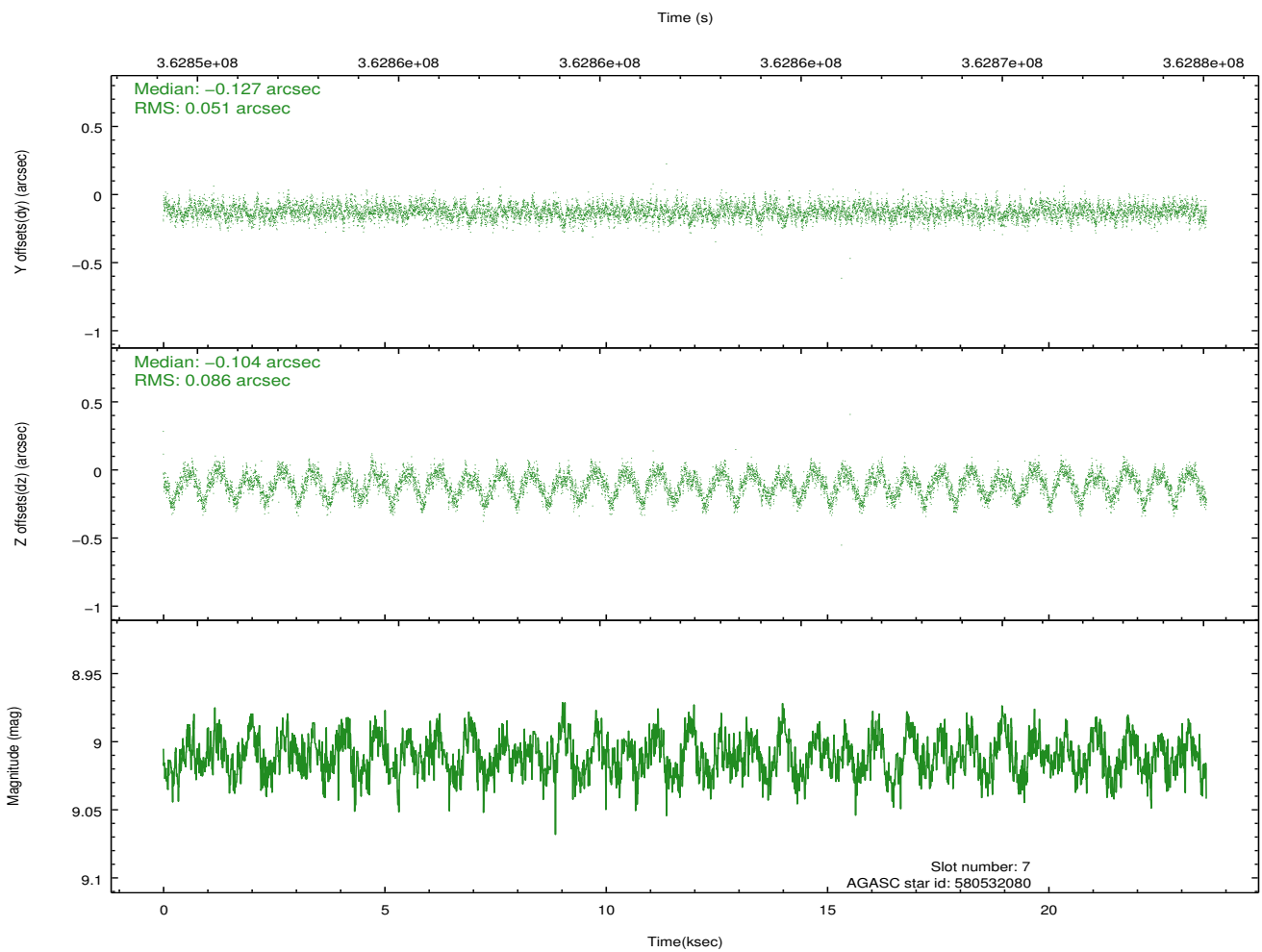
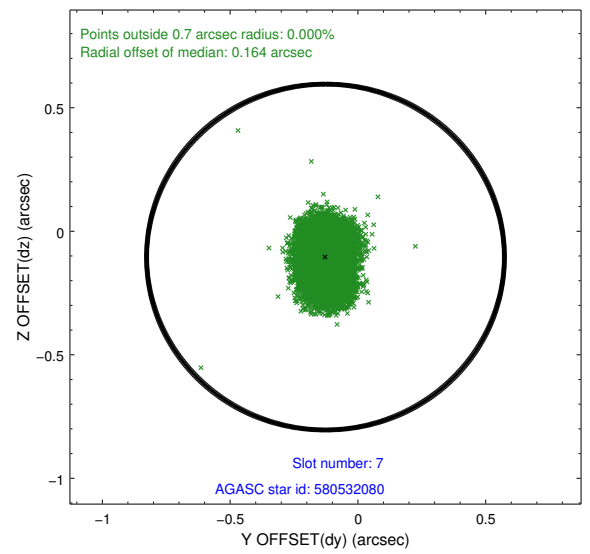
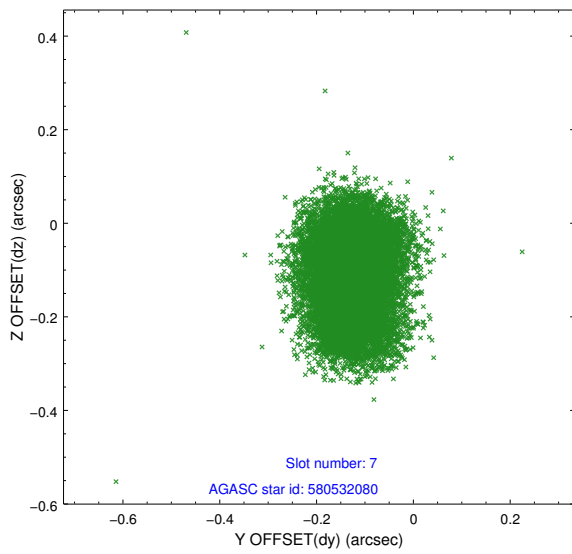
2.4.3 Slot 5



2.4.4 Slot 6

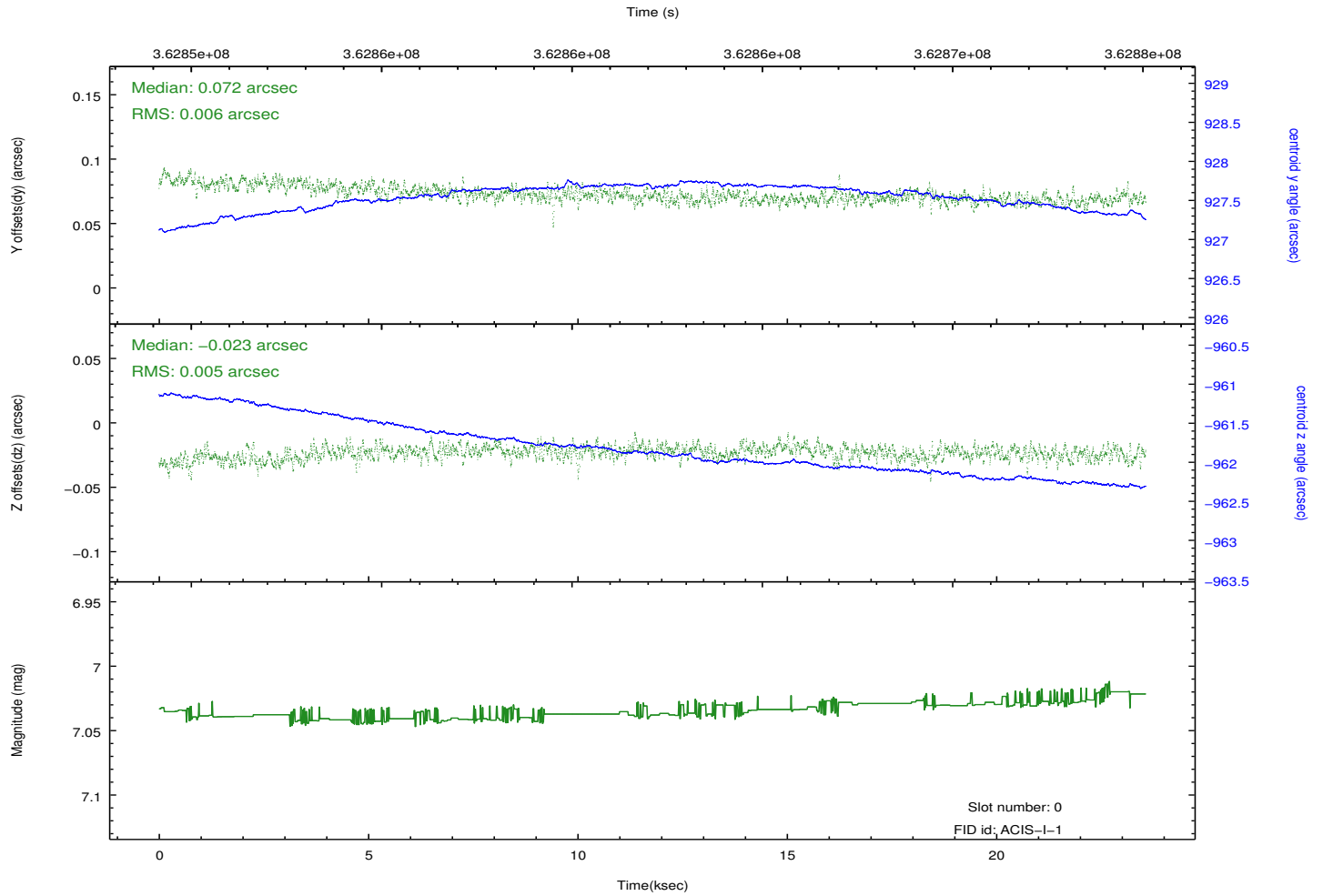
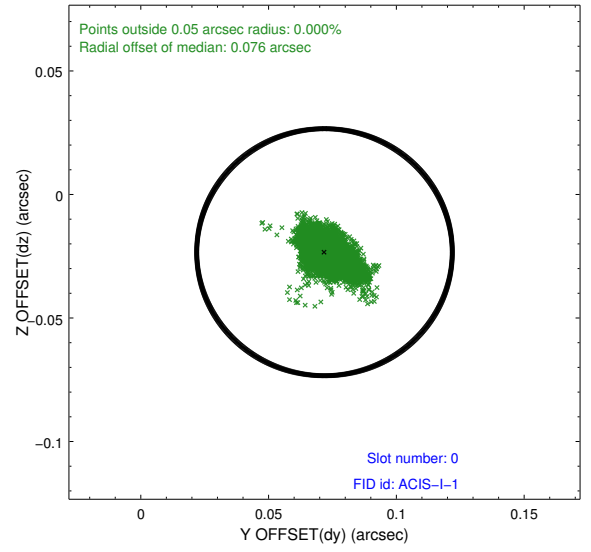
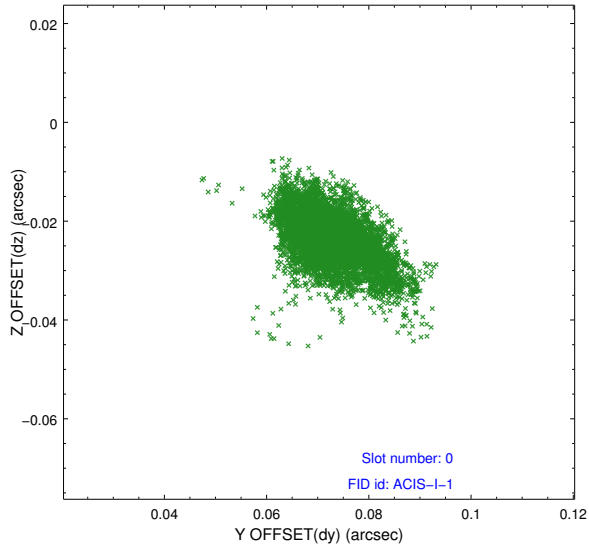


2.4.5 Slot 7

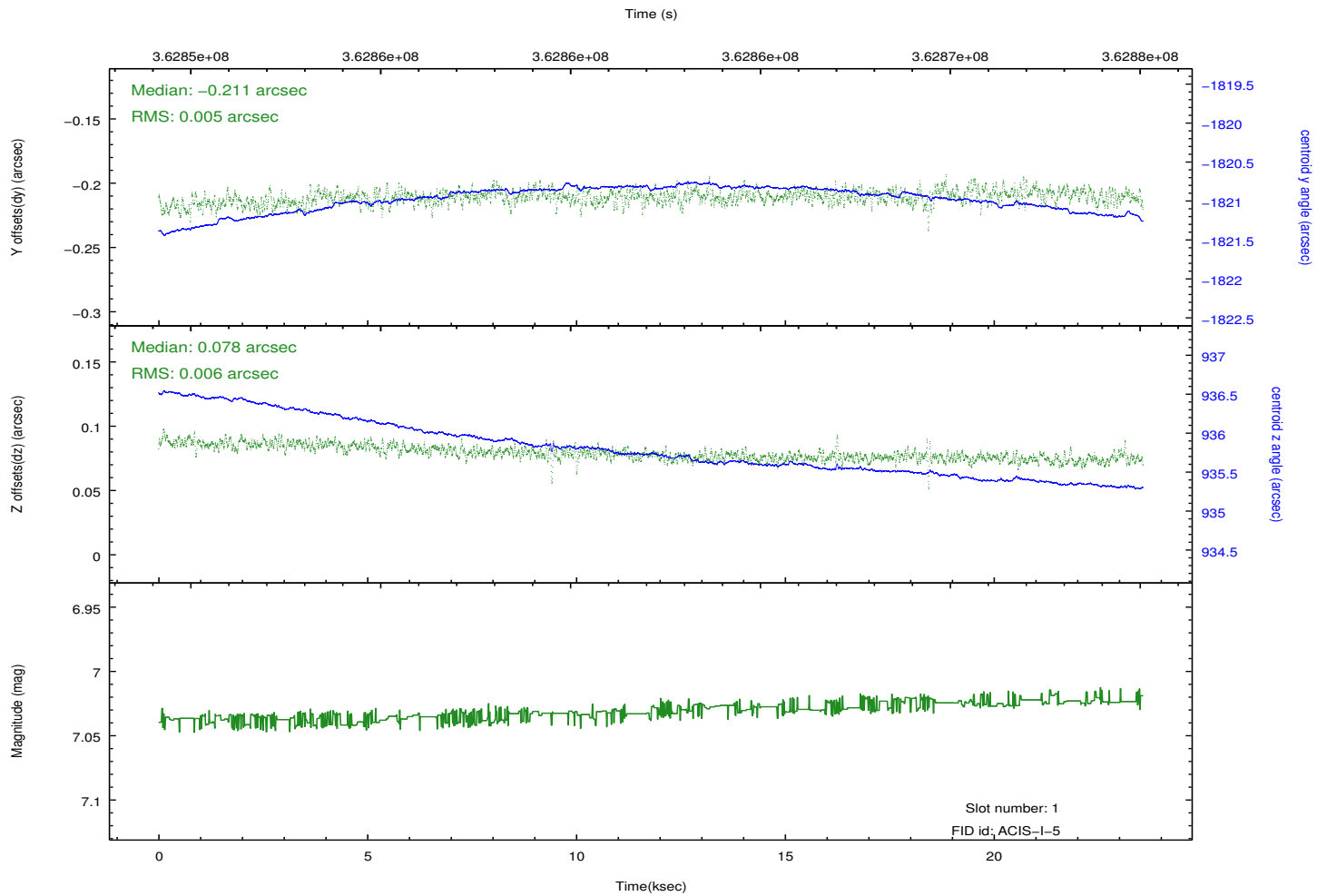
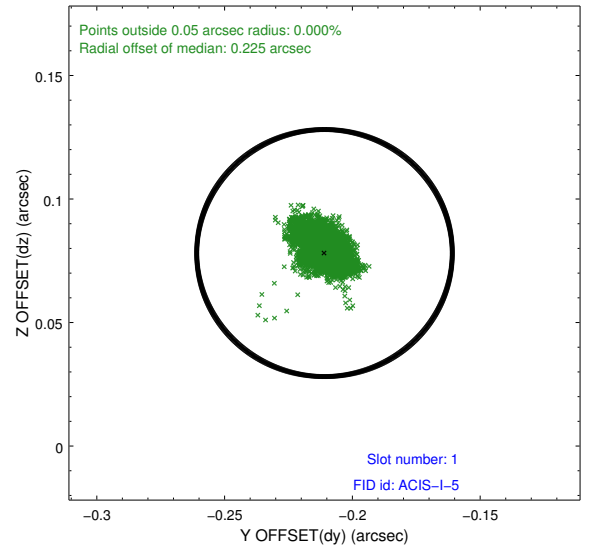
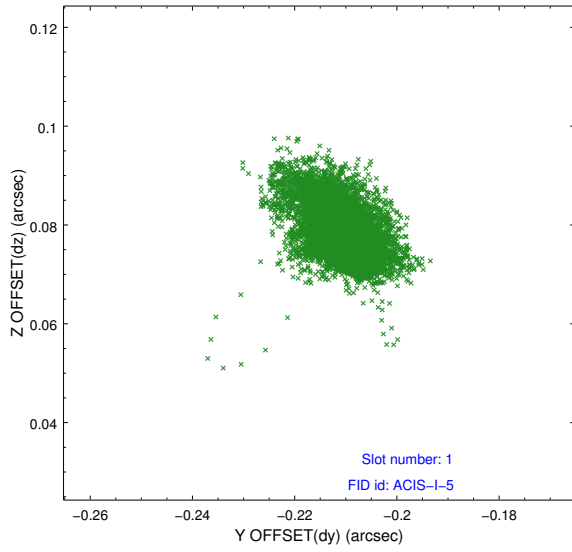


2.5 FID Slots

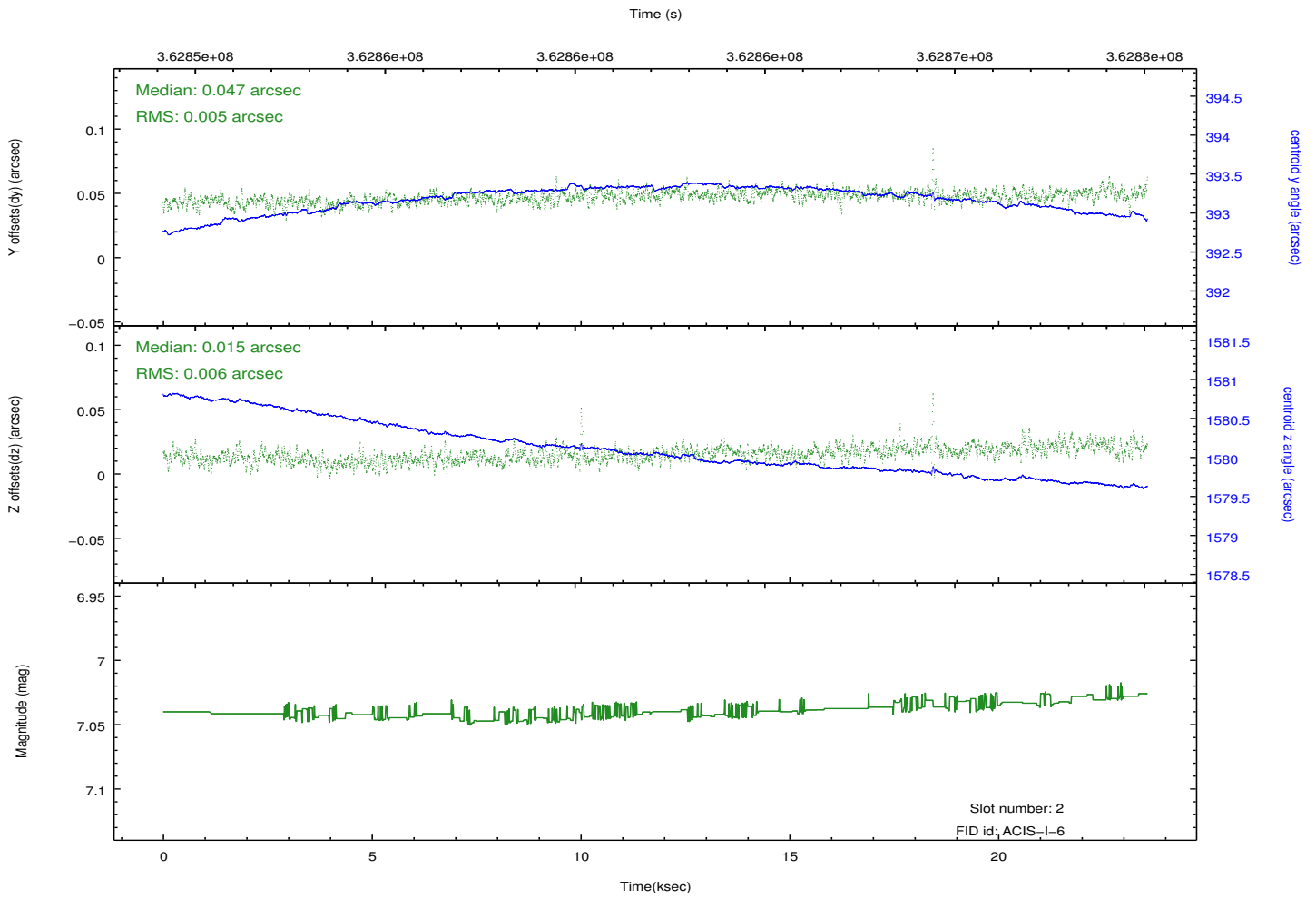
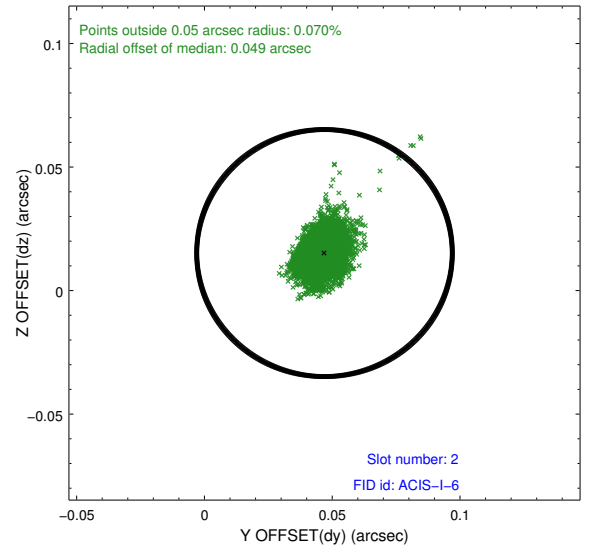
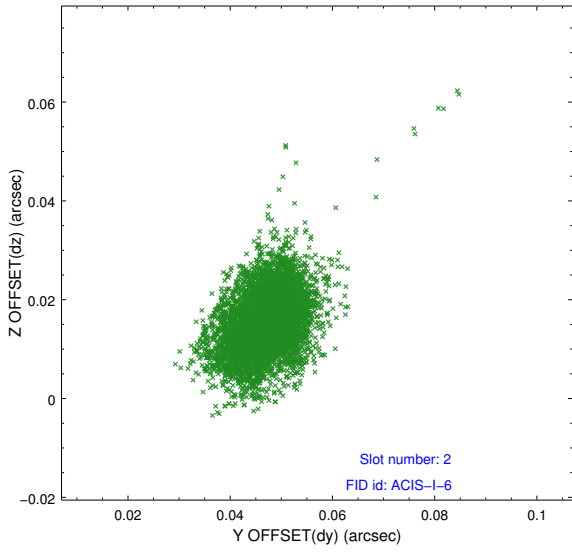
2.5.1 Slot 0



2.5.2 Slot 1



2.5.3 Slot 2



A Summary

A.1 Status

V&V Scientist	Jen Lauer
V&V Date (YYYY-MM-DD)	2012.06.13
V&V Edition	1
V&V Disposition and Status	OK
V&V Charge Time	22.5369591

A.2 Comments

Joint Proposal: NRAO