

V&V Reference Report

L2 ASCDS Version : 8.4.5

Observation 10884 - L2 Version 3
Chandra X-Ray Center

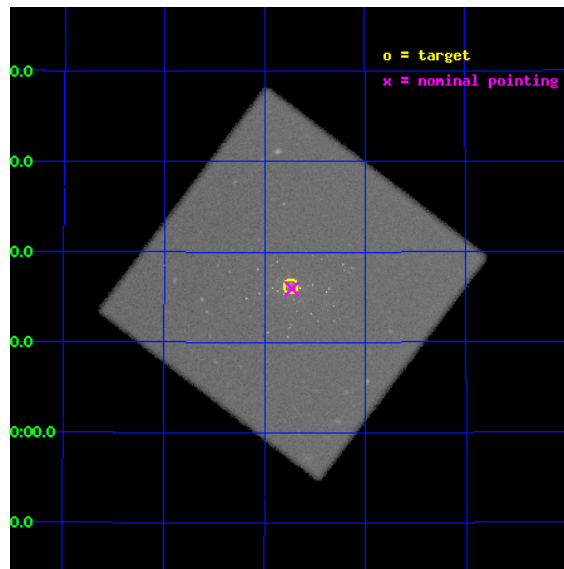
L2 Processing Date : Aug 13 2012

Contents

1	Front	2
2	OBI	3
2.1	OBI	3
2.1.1	Images	3
2.1.2	Parameters	4
2.1.3	Events	4
2.2	Compared Parameters	5
2.3	Aspect	6
2.4	Star Slots	9
2.4.1	Slot 3	9
2.4.2	Slot 4	10
2.4.3	Slot 5	11
2.4.4	Slot 6	12
2.4.5	Slot 7	13
2.5	FID Slots	14
2.5.1	Slot 0	14
2.5.2	Slot 1	15
2.5.3	Slot 2	16
A	Summary	17
A.1	Status	17
A.2	Comments	17

1 Front

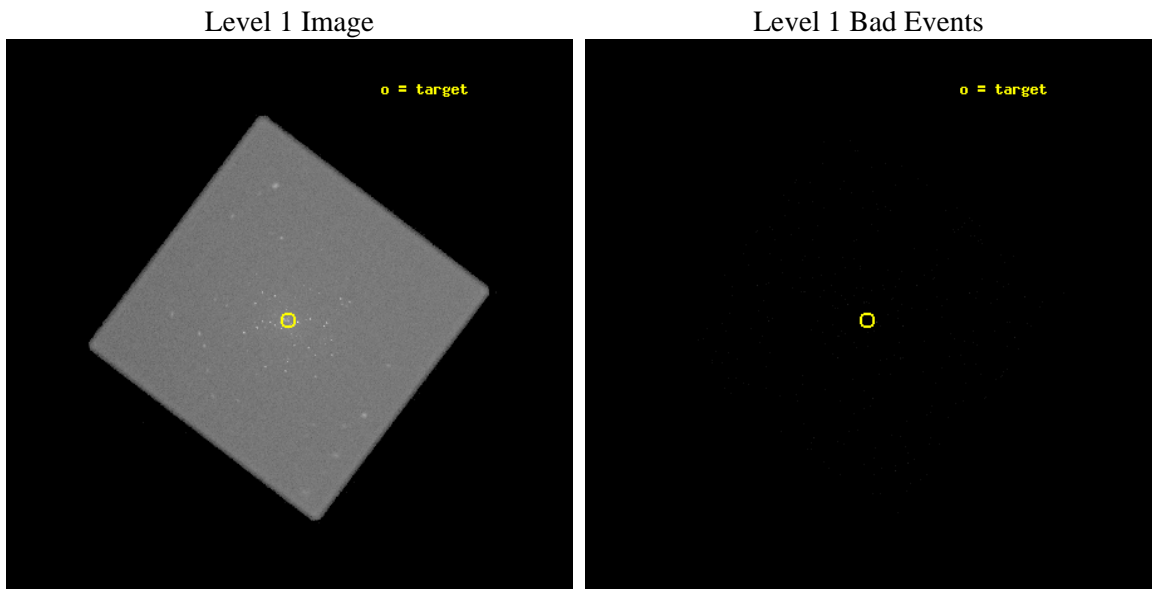
seq_num	300261	Sequence number
obs_id	10884	Observation id
title	Resolving short supersoft source states of optical novae in the core of M31	Proposal title
observer	Dr. Wolfgang Pietsch	Principal investigator
object	M31	Source name
ra_targ	10.684583	Observer's specified target RA [deg]
dec_targ	41.269278	Observer's specified target Dec [deg]
ra_nom	10.681864699454	Nominal RA [deg]
dec_nom	41.265577120553	Nominal Dec [deg]
roll_nom	262.24870652504	Nominal Roll [deg]
revision	3	Processing version of data
ontime	18586.582187295	[s]
livetime	18358.938596956	Ontime multiplied by DTCOR
l2events	1453667	Number of level 2 events



2 OBI

2.1 OBI

2.1.1 Images



2.1.2 Parameters

obi_num	1	Obi number	sched_exp_time	18400.000000	[s] Scheduled observation exposure time
ascdsver	8.4.5	Processing system revision	ontime	18586.582187295	[s]
caldbver	4.5.1.1	 	l1events	2162291	Number of level 1 events
date	2012-08-13T17:59:04	Date and time of file creation			
revision	3	Processing version of data			

2.1.3 Events

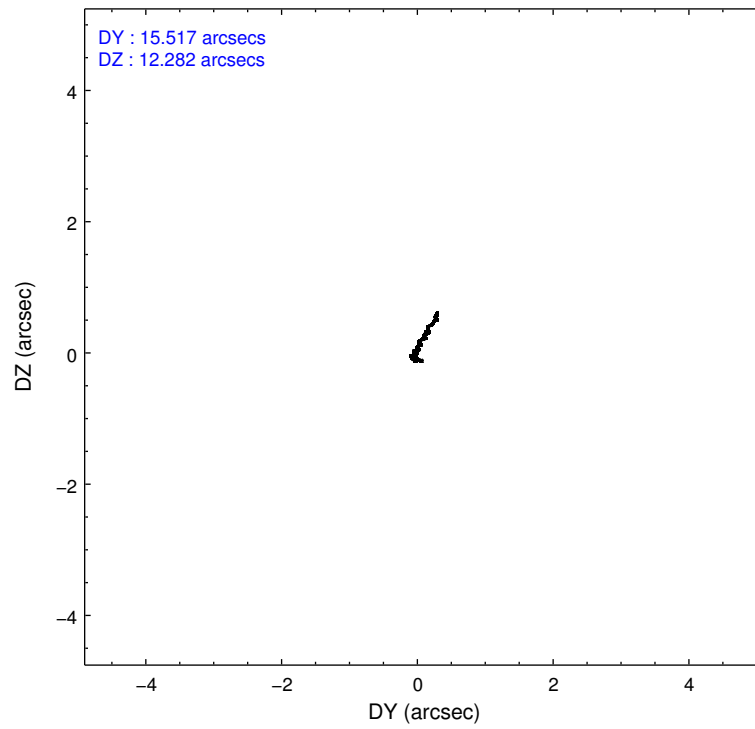
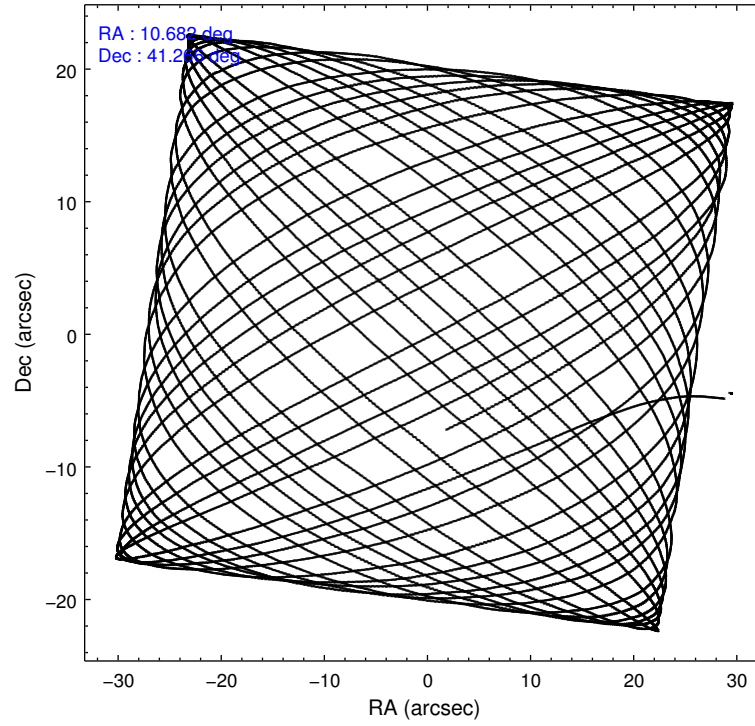
Level 1 Events

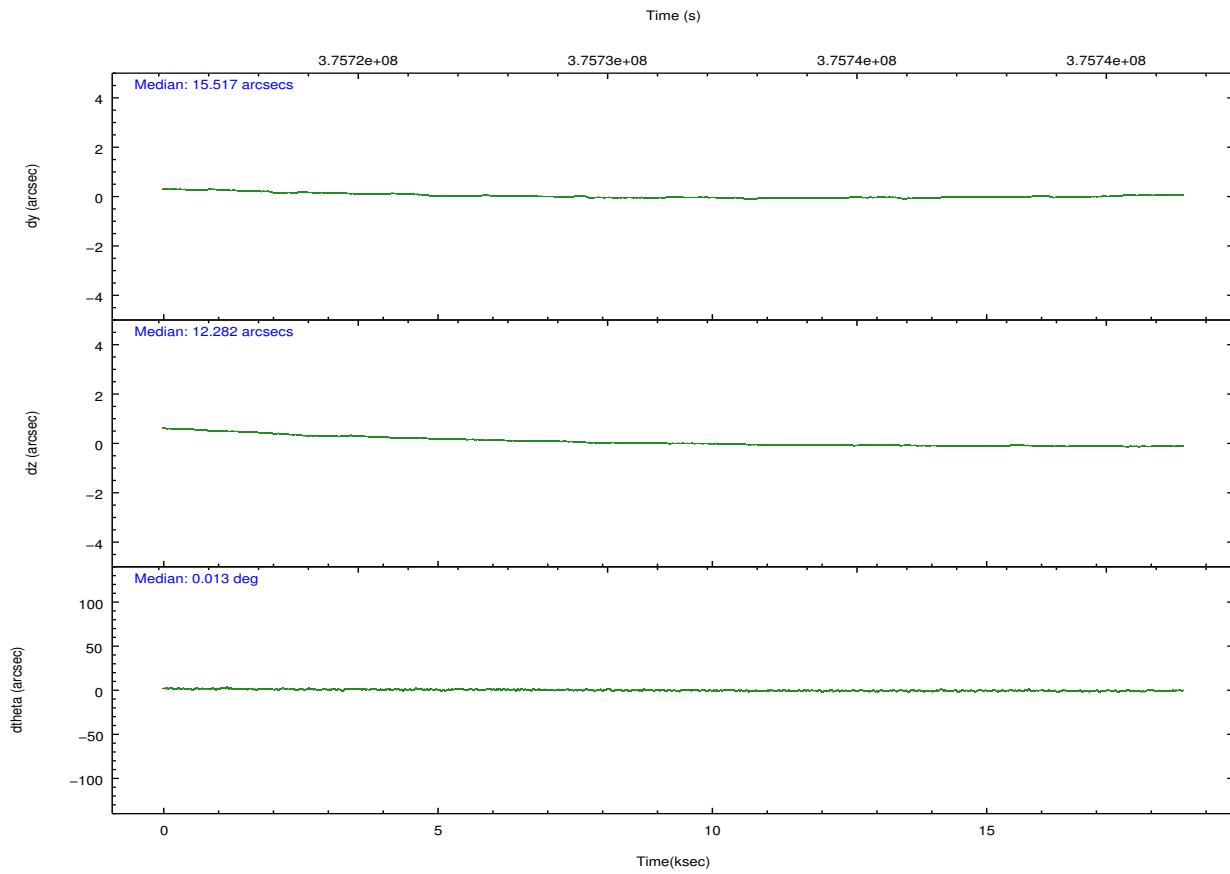
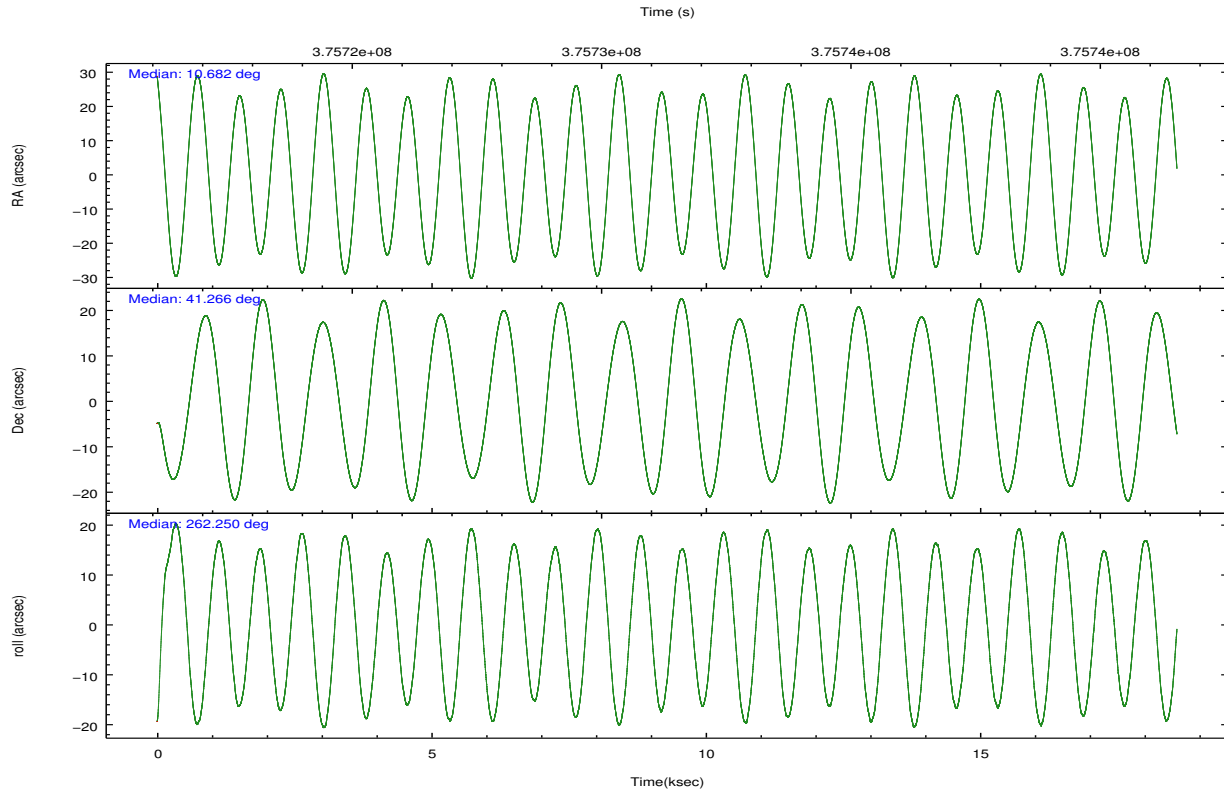
	segment 0
level 1 events	2162291
rejected events	77847
rejected %	3%

2.2 Compared Parameters

Parameter	Planned	Actual	Parameter	Planned	Actual
Instrument	HRC	HRC	Obspar format version number	7	7
Detector	HRC-I	HRC-I	Obspar file type	PREDICTED	ACTUAL
Grating	NONE	NONE	Obspar update status	NONE	UPDATED
Data mode	OBSERVING	OBSERVING			
Observation mode	POINTING	POINTING			
[deg] Pointing RA	10.667352	10.68186469945402			
[deg] Pointing Dec	41.290530	41.26557712055349			
[deg] Pointing Roll	262.353774	262.2487065250431			
[mm] SIM focus pos	-1.040293	-1.038866356238299			
[mm] SIM defocus	0	0.001426264420575141			
[mm] SIM translation stage pos	126.985494	126.9829799899862			
[mm] SIM translation stage offset	0	0.002508901615314585			
[s] Observation start time (MET)	375722193.184000	375721349.69924			
Observation start date	2009-11-27T15:15:27	2009-11-27T15:02:29			
[s] Observation end time (MET)	375740593.184000	375741623.17526			
Observation end date	2009-11-27T20:22:07	2009-11-27T20:40:23			

2.3 Aspect



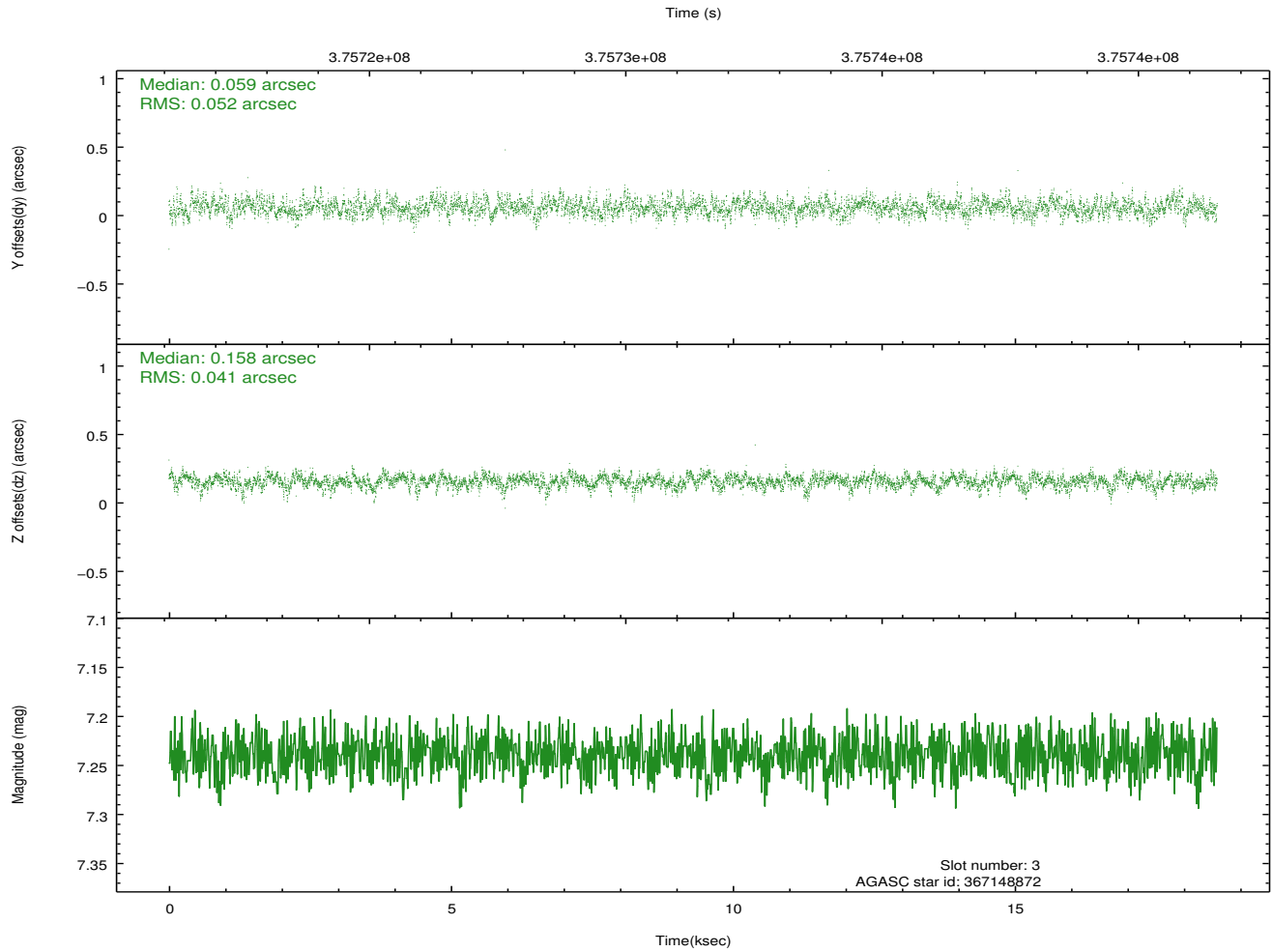
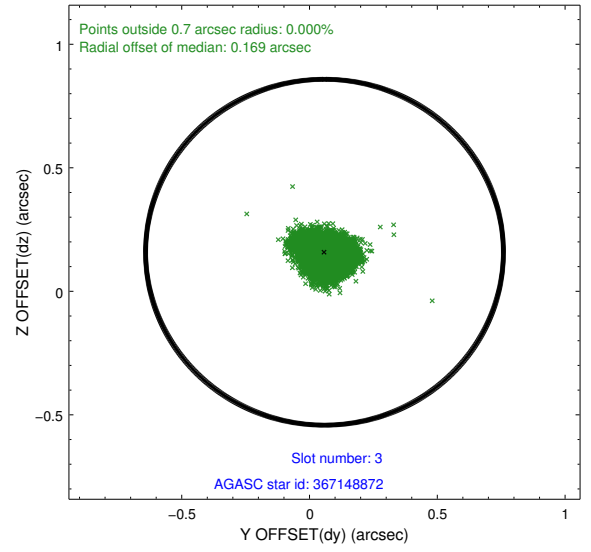
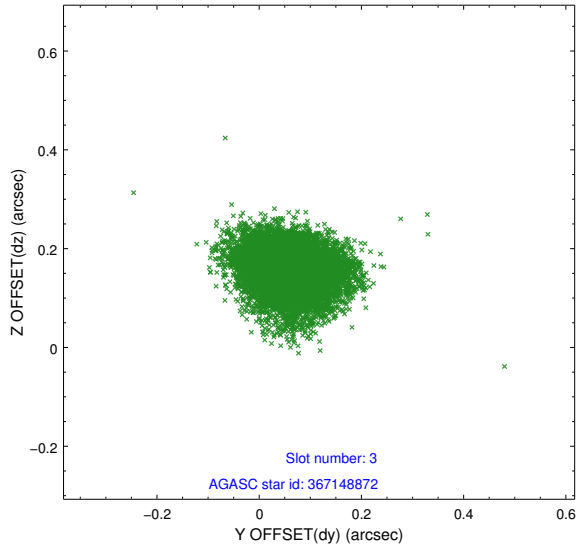


Slot Statistics

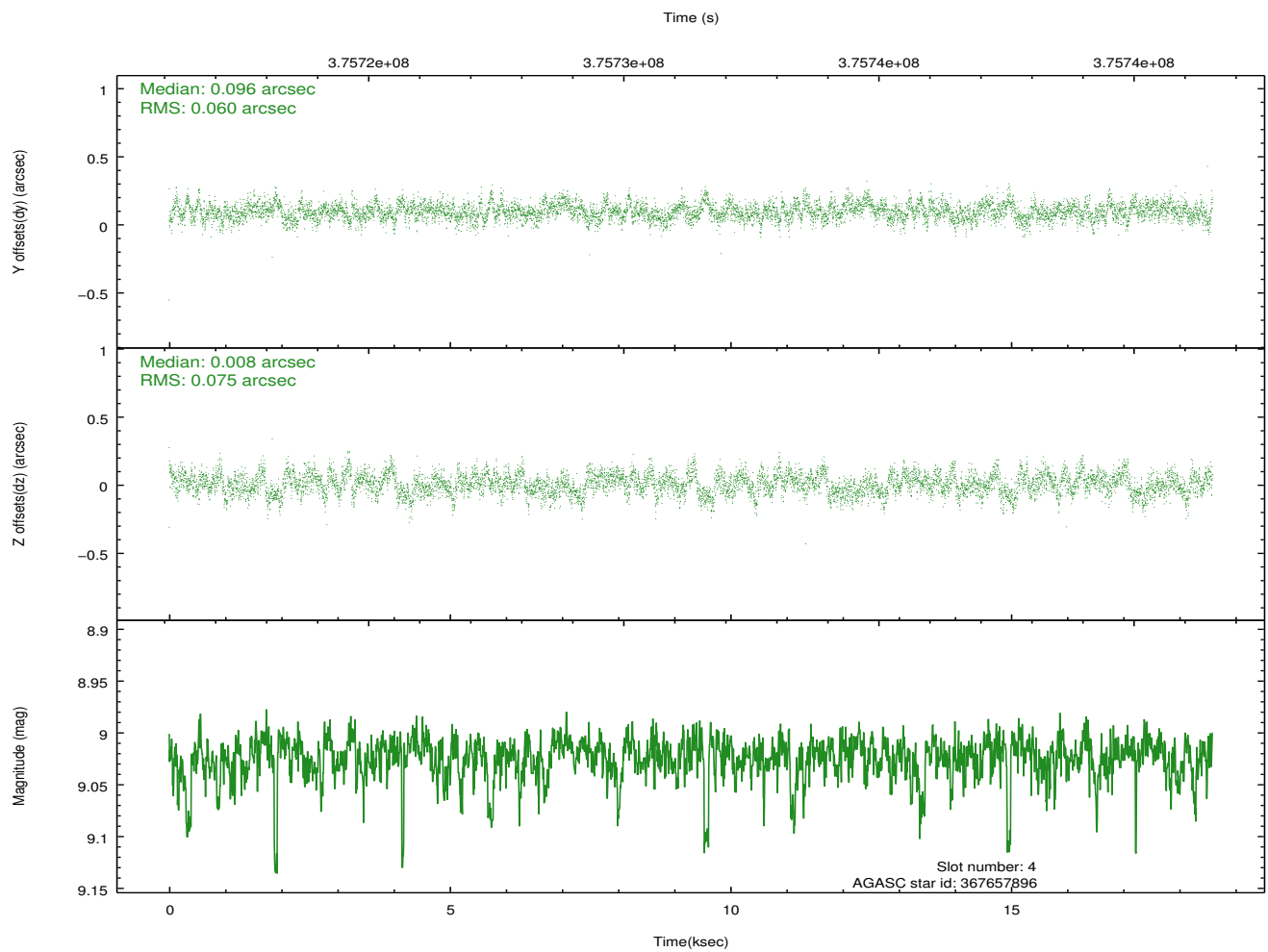
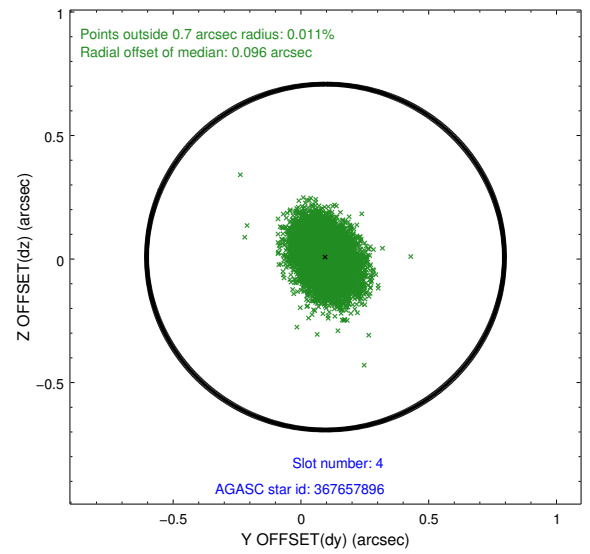
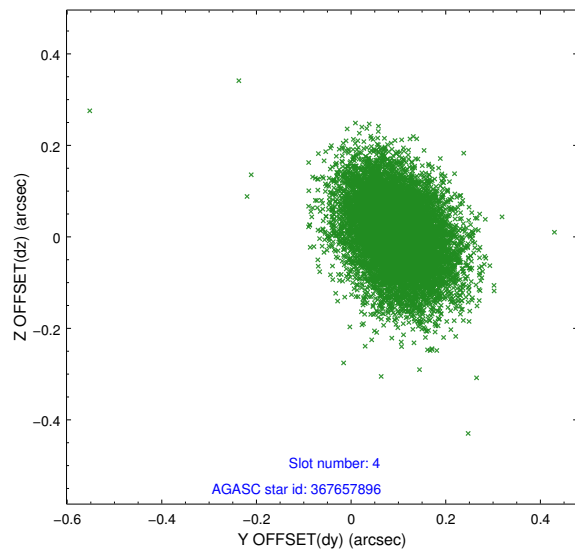
slot	status	id	mag	n_pts	med_dy	med_dz	dr1	dr2	ra	dec	mean_y	mean_z
0	FID	HRC-I-1	6.99	4534	-0.118	-0.026	0.008	0.013	0.000000	0.000000	-771.59	-1300.33
1	FID	HRC-I-2	7.02	4534	0.191	-0.090	0.008	0.012	0.000000	0.000000	841.18	-1302.38
2	FID	HRC-I-4	7.01	4533	0.043	0.024	0.007	0.011	0.000000	0.000000	1271.72	1001.44
3	GUIDE	367148872	7.24	9065	0.059	0.158	0.070	0.115	10.505940	40.688258	2207.92	-148.11
4	GUIDE	367657896	9.02	9045	0.096	0.008	0.100	0.167	11.197765	41.313576	-276.94	1409.91
5	GUIDE	367663272	9.29	9043	-0.032	0.104	0.111	0.183	10.656279	41.699429	-1454.46	-225.72
6	GUIDE	367674552	8.85	9062	0.044	-0.076	0.089	0.147	11.016238	41.570845	-1126.98	796.91
7	GUIDE	367146304	6.25	9066	-0.169	-0.193	0.068	0.107	11.154952	40.679362	1999.84	1611.77

2.4 Star Slots

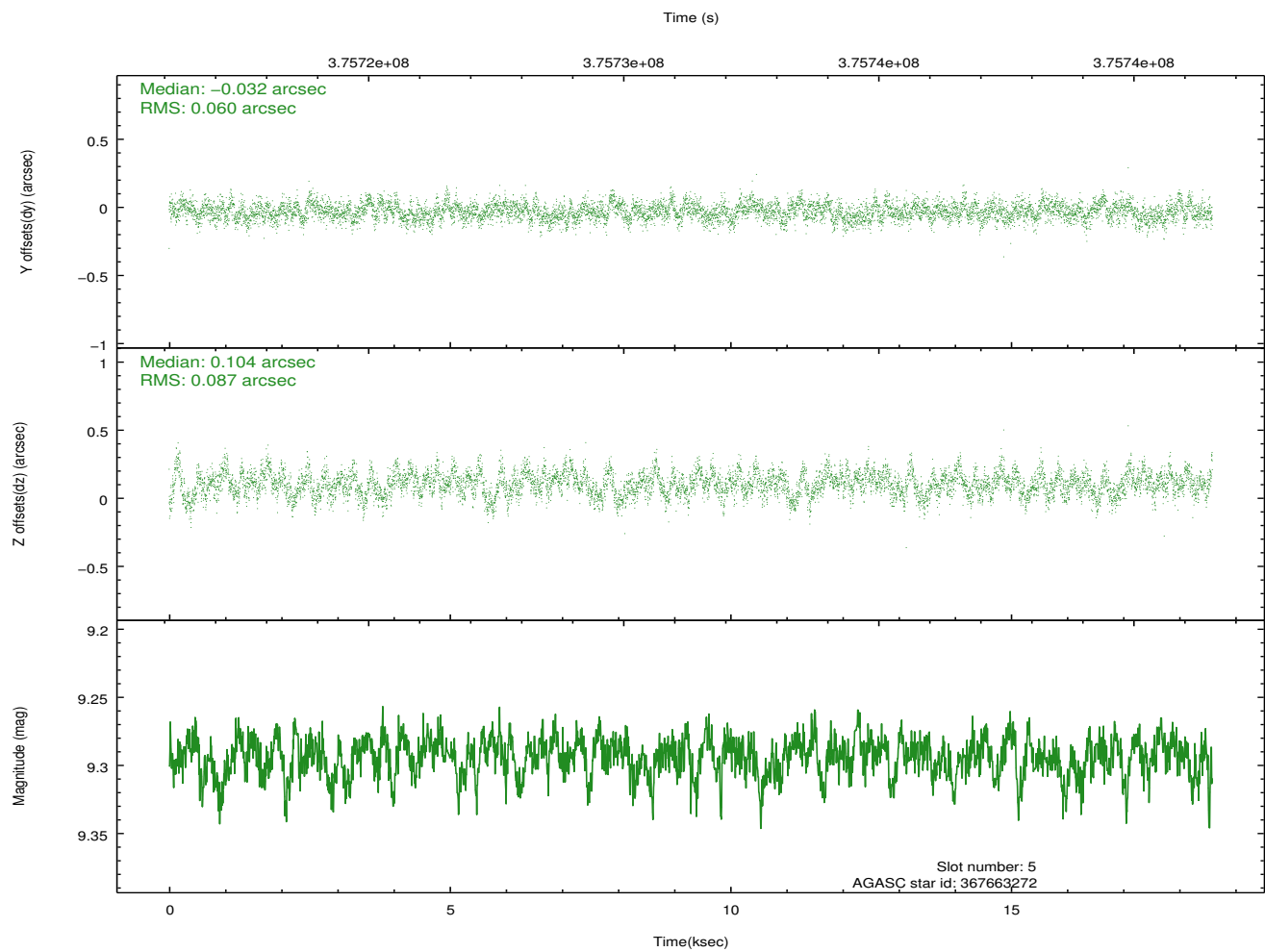
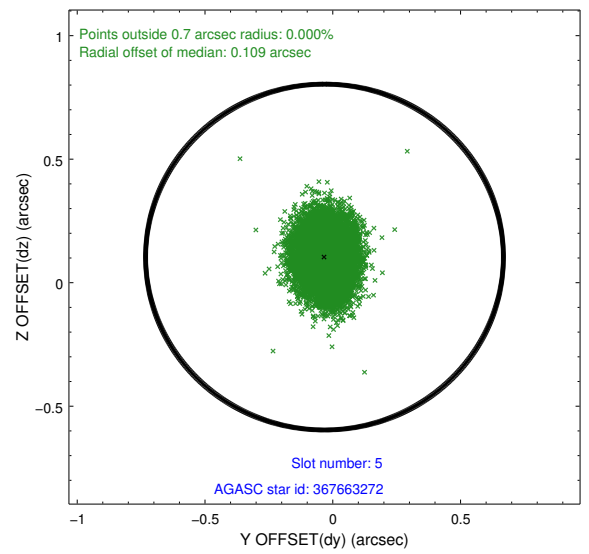
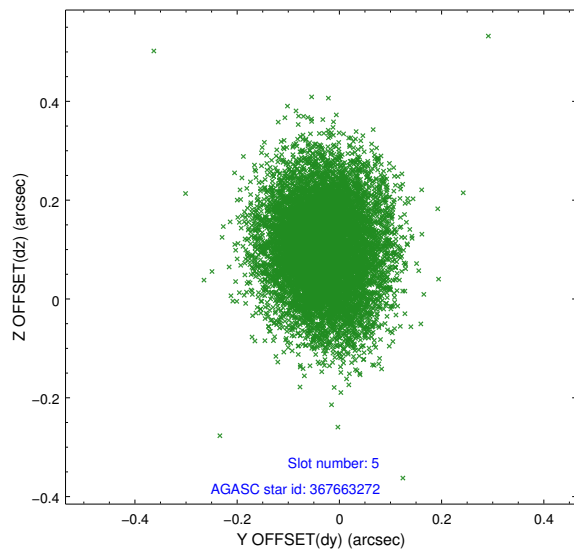
2.4.1 Slot 3



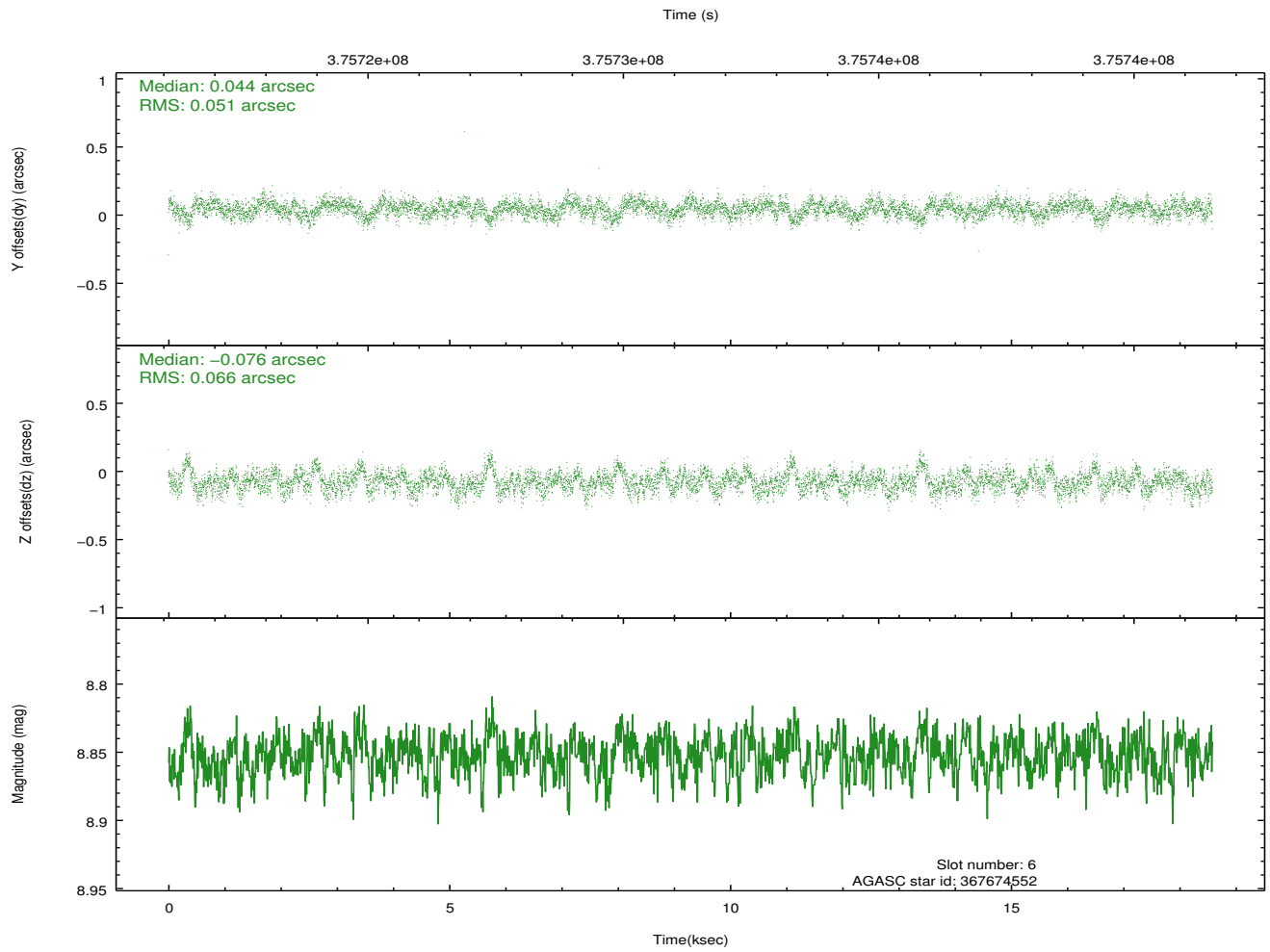
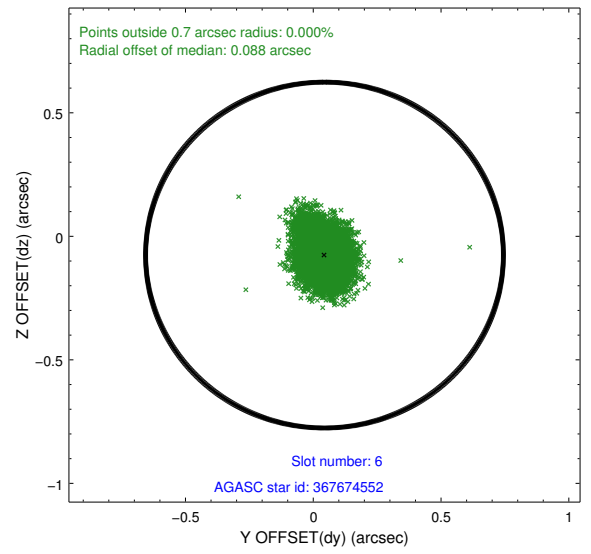
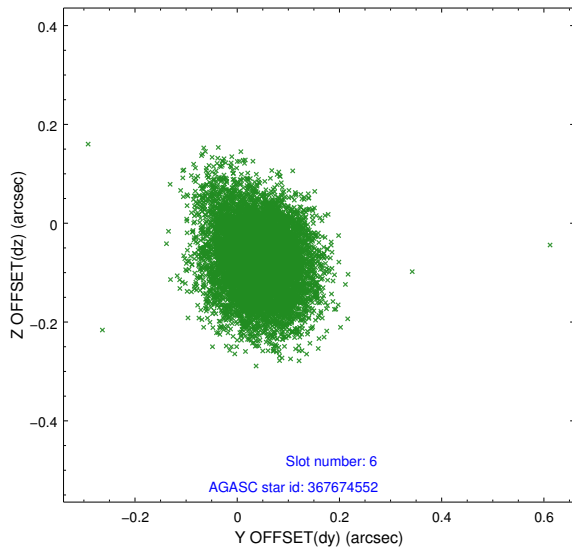
2.4.2 Slot 4



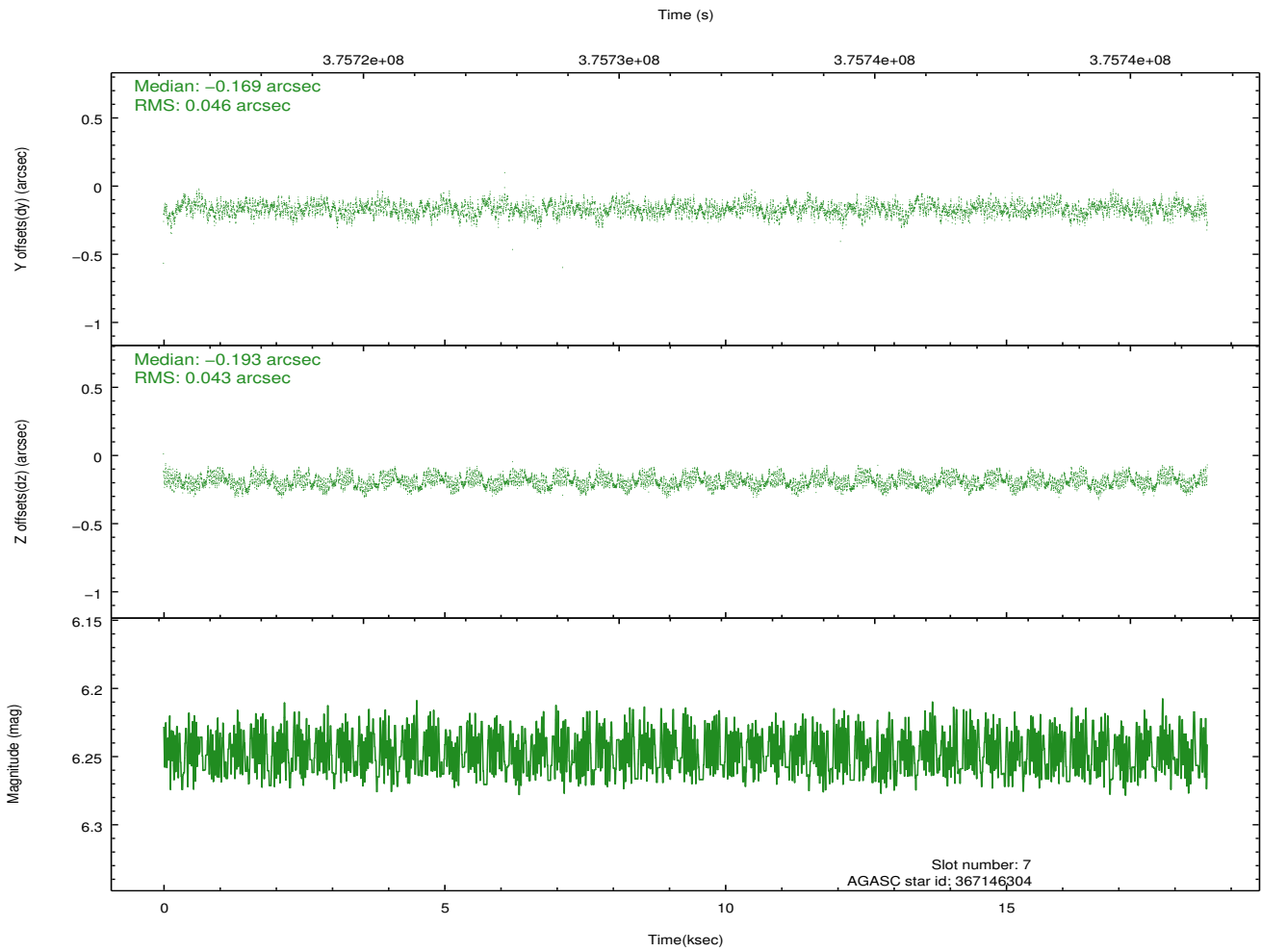
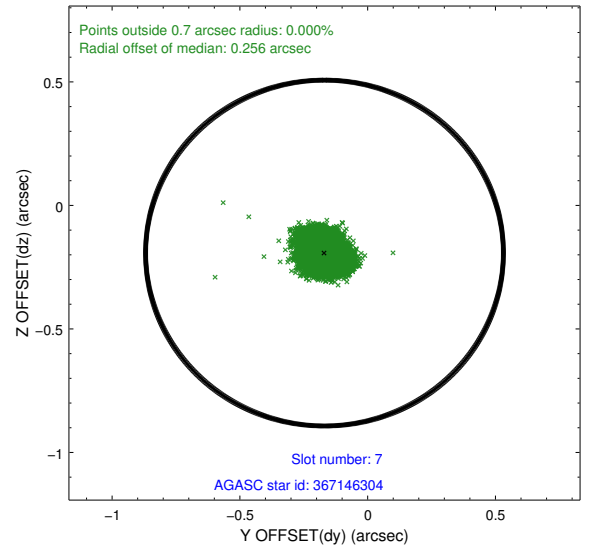
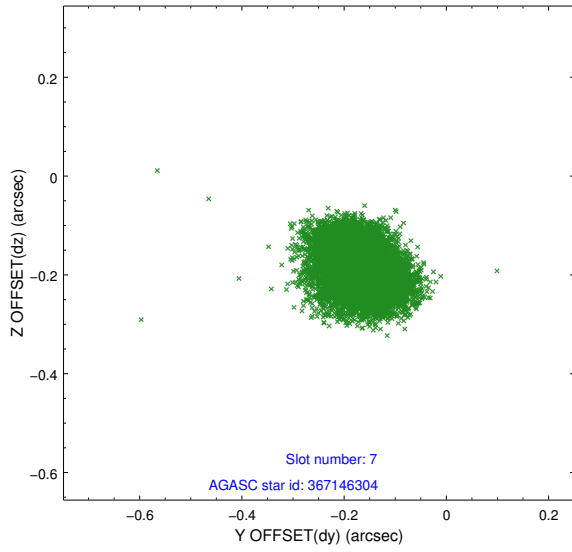
2.4.3 Slot 5



2.4.4 Slot 6

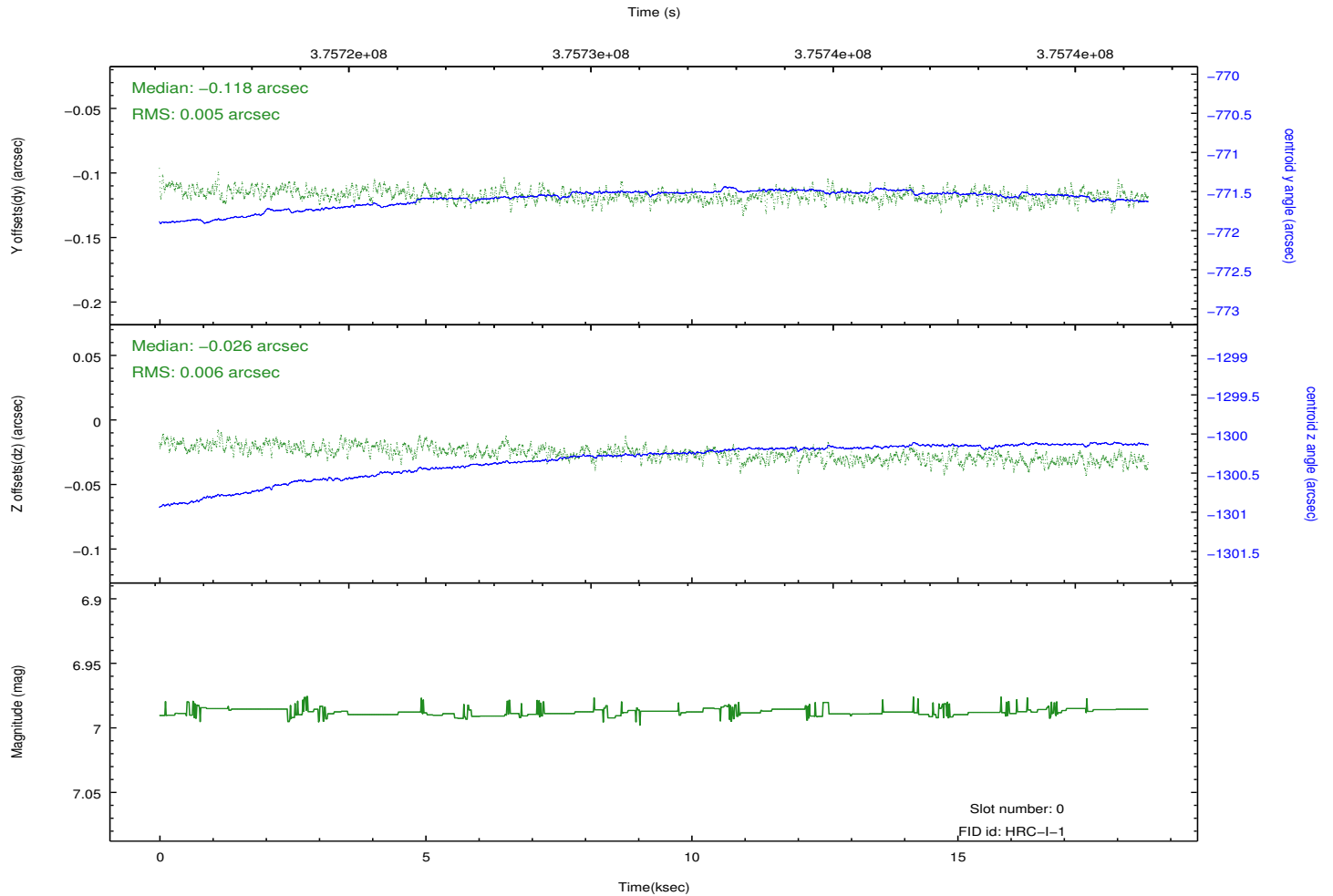
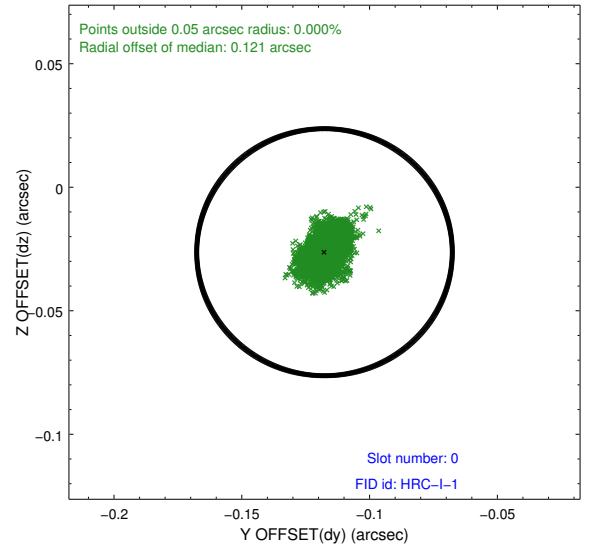
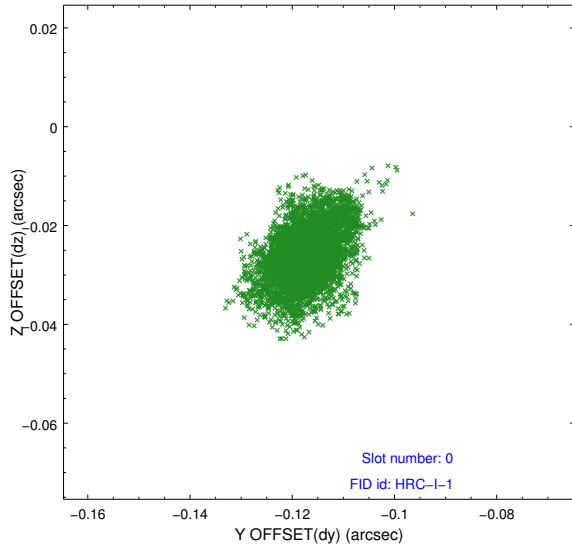


2.4.5 Slot 7

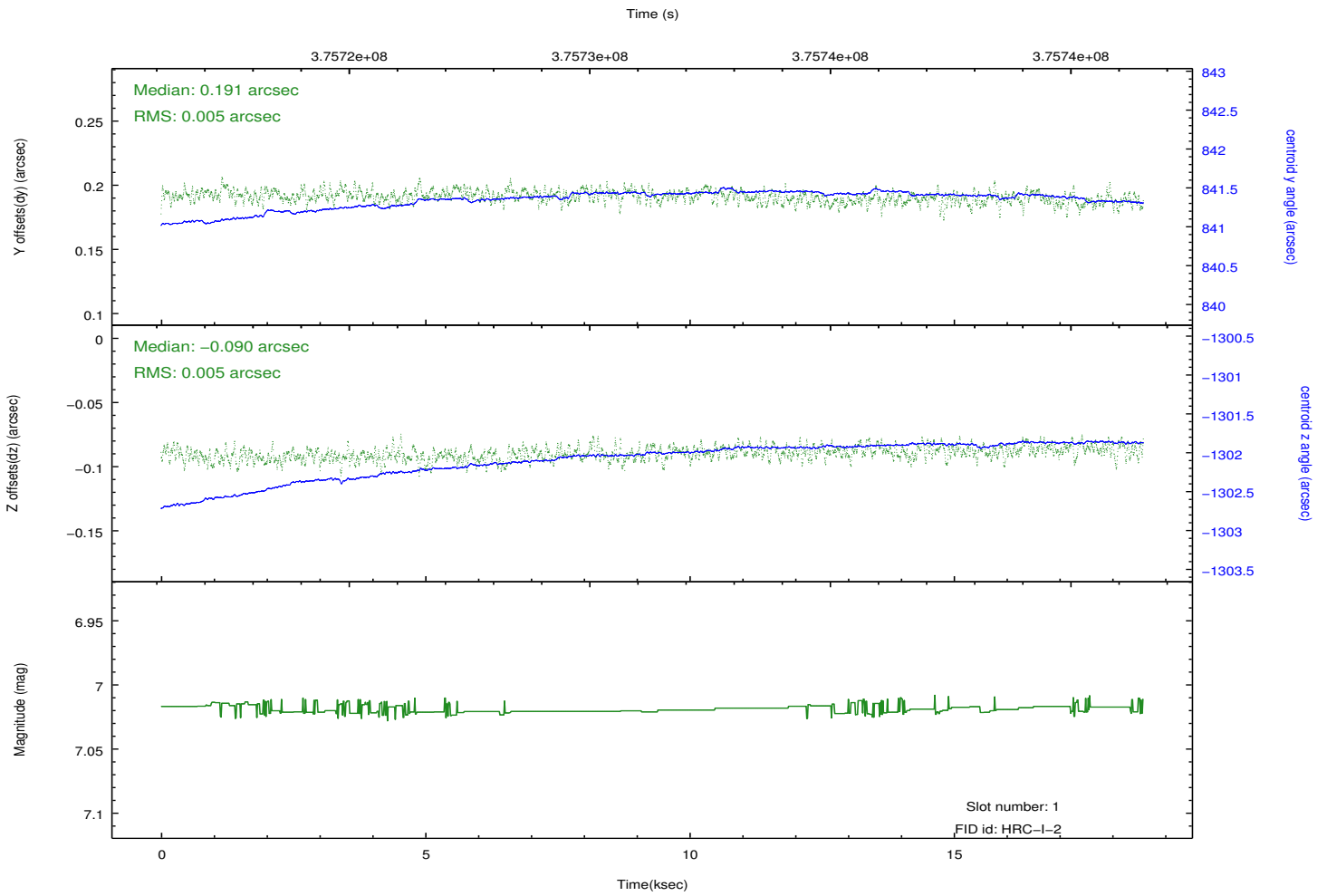
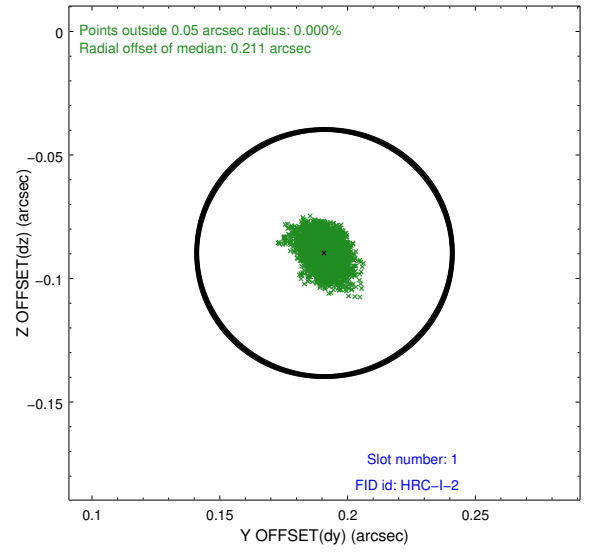
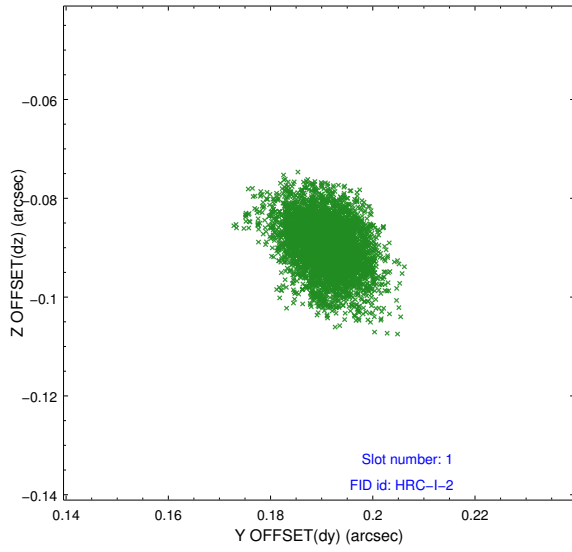


2.5 FID Slots

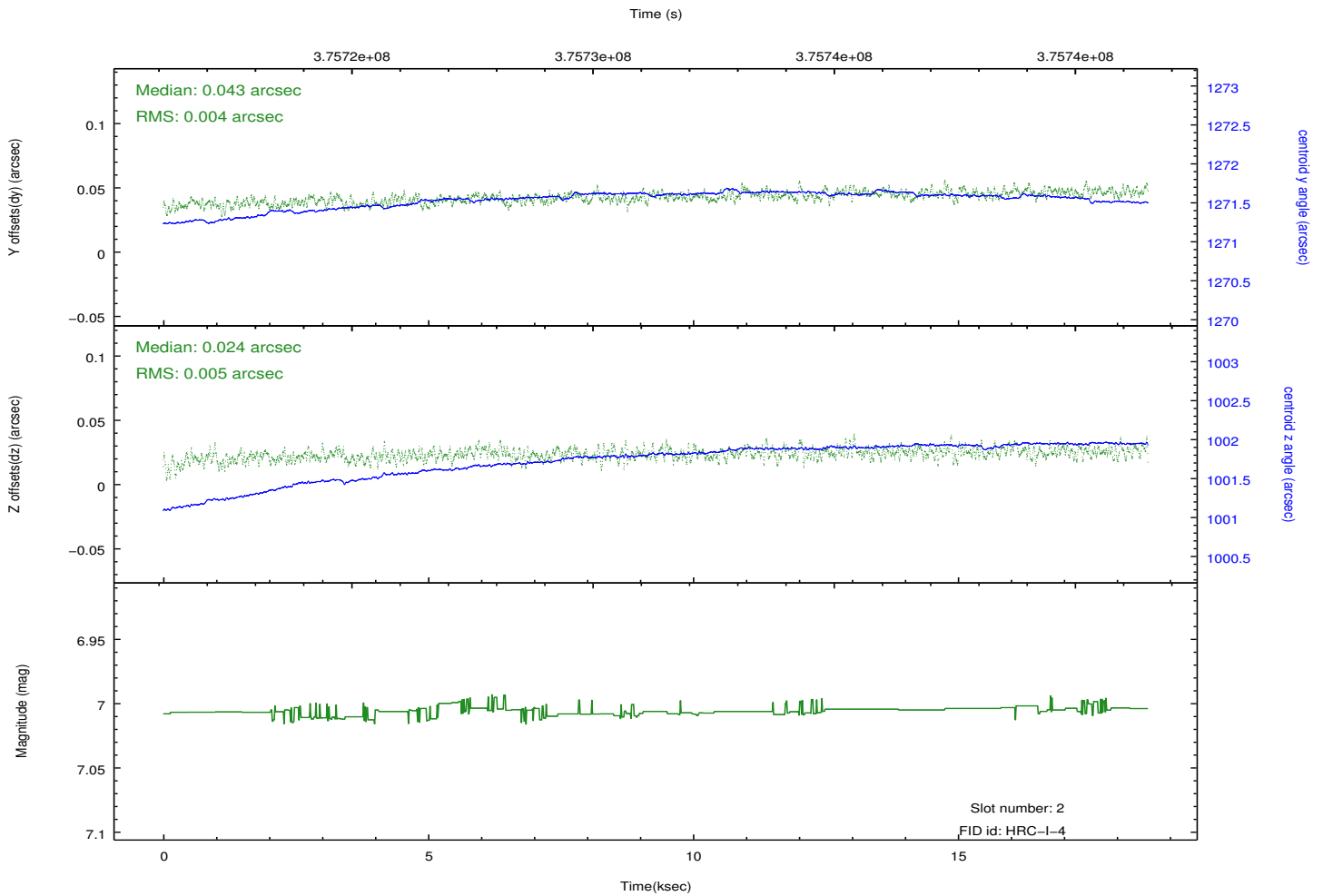
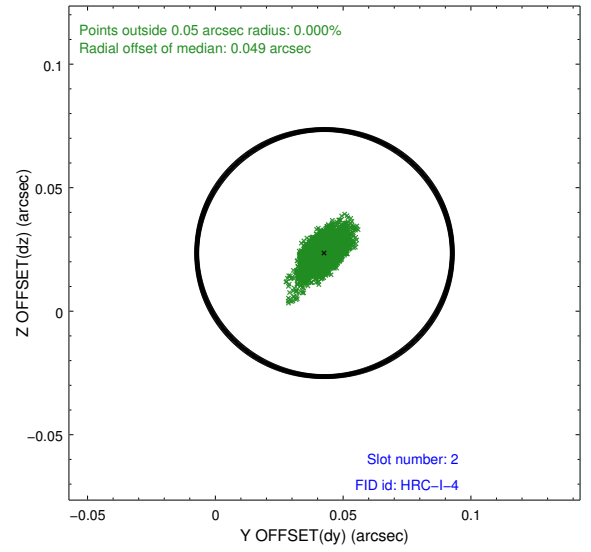
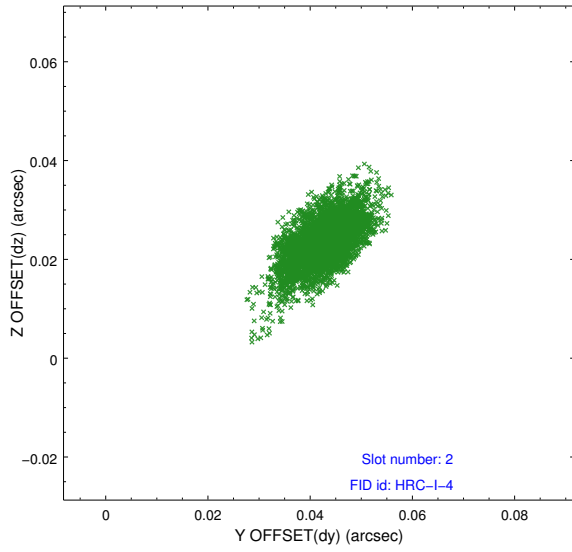
2.5.1 Slot 0



2.5.2 Slot 1



2.5.3 Slot 2



A Summary

A.1 Status

V&V Scientist	Jen Lauer
V&V Date (YYYY-MM-DD)	2012.08.22
V&V Edition	1
V&V Disposition and Status	OK
V&V Charge Time	18.586582187772

A.2 Comments

Joint proposal with XMM.