

V&V Reference Report

L2 ASCDS Version : 8.4.5

Observation 10954 - L2 Version 2
Chandra X-Ray Center

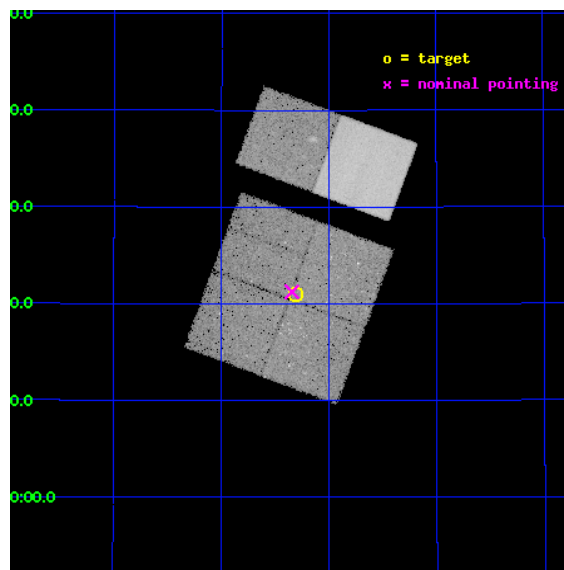
L2 Processing Date : Jun 21 2012

Contents

1	Front	2
2	OBI	3
2.1	OBI	3
2.1.1	Images	3
2.1.2	Bias	3
2.1.3	Parameters	4
2.1.4	Events	4
2.2	Compared Parameters	5
2.3	Aspect	6
2.4	Star Slots	9
2.4.1	Slot 3	9
2.4.2	Slot 4	10
2.4.3	Slot 5	11
2.4.4	Slot 6	12
2.4.5	Slot 7	13
2.5	FID Slots	14
2.5.1	Slot 0	14
2.5.2	Slot 1	15
2.5.3	Slot 2	16
A	Summary	17
A.1	Status	17
A.2	Comments	17

1 Front

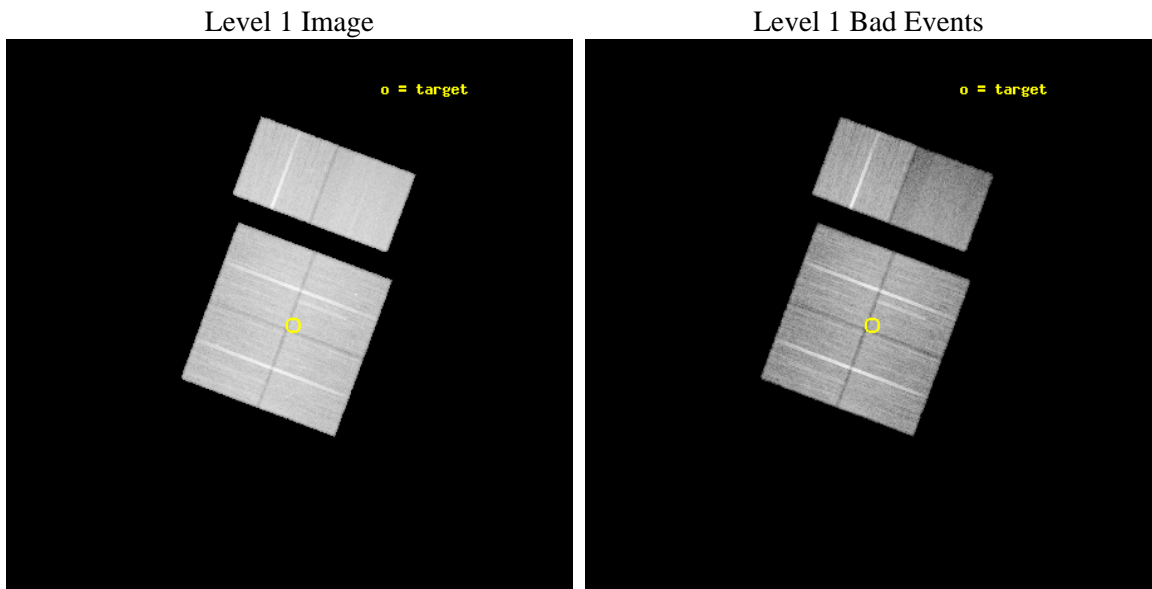
seq_num	200586	Sequence number
obs_id	10954	Observation id
title	The Chandra Cygnus OB2 Survey	Proposal title
observer	Dr. Jeremy Drake	Principal investigator
object	Cygnus OB2	Source name
dtycle	0	
cycle	P	events from which exps? Prim/Second/Both
ra_targ	308.577413	Observer's specified target RA [deg]
dec_targ	41.349125	Observer's specified target Dec [deg]
ra_nom	308.58592841506	Nominal RA [deg]
dec_nom	41.354071301486	Nominal Dec [deg]
roll_nom	20.4275806086	Nominal Roll [deg]
revision	2	Processing version of data
ontime	29540.881223559	Sum of GTIs [s]
liveltime	29166.816798124	Livetime [s]
ontime0	29540.758223176	Sum of GTIs [s]
ontime1	29547.281104147	Sum of GTIs [s]
ontime2	29544.081153929	Sum of GTIs [s]
ontime3	29540.881223559	Sum of GTIs [s]
ontime6	29544.204273939	Sum of GTIs [s]
ontime7	29547.404224157	Sum of GTIs [s]
l2events	213971	Number of level 2 events



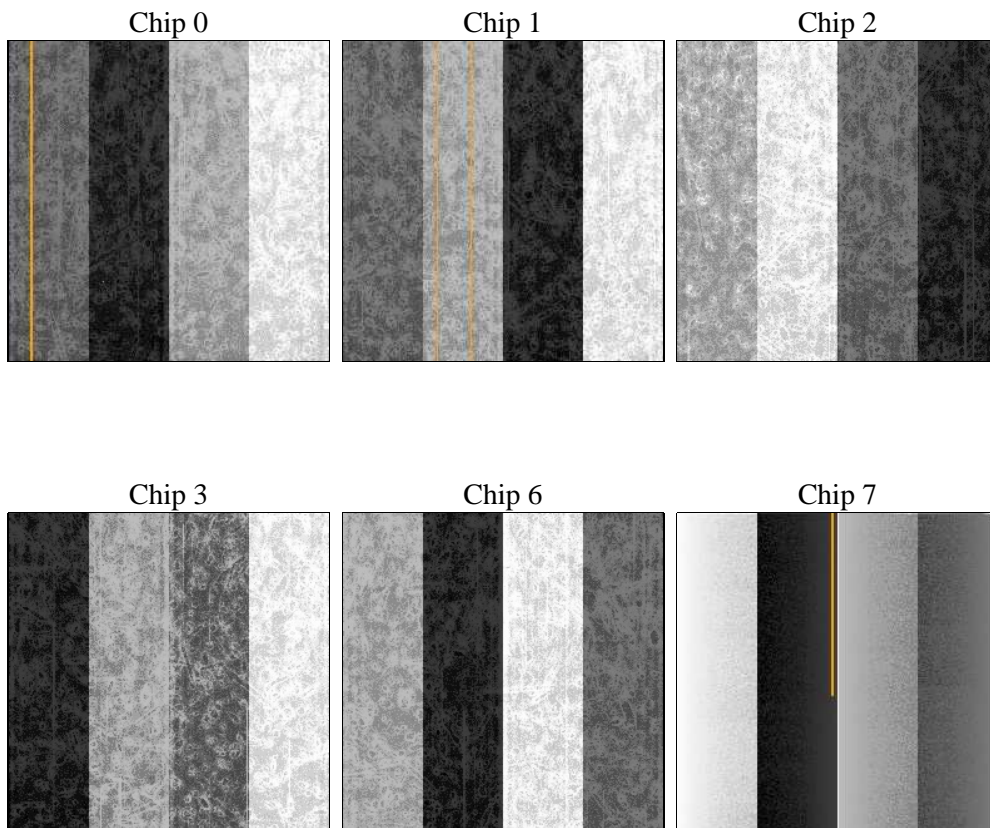
2 OBI

2.1 OBI

2.1.1 Images



2.1.2 Bias



2.1.3 Parameters

obi_num	0	Obi number	sched_exp_time	29500.000000	[s] Scheduled observation exposure time
ascdsver	8.4.5	Processing system revision	ontime	29540.881223559	Sum of GTIs [s]
caldbver	4.4.10	 	ontime0	29540.758223176	Sum of GTIs [s]
date	2012-06-21T02:54:18	Date and time of file creation	ontime1	29547.281104147	Sum of GTIs [s]
revision	2	Processing version of data	ontime2	29544.081153929	Sum of GTIs [s]
			ontime3	29540.881223559	Sum of GTIs [s]
			ontime6	29544.204273939	Sum of GTIs [s]
			ontime7	29547.404224157	Sum of GTIs [s]
			l1events	1301621	Number of level 1 events

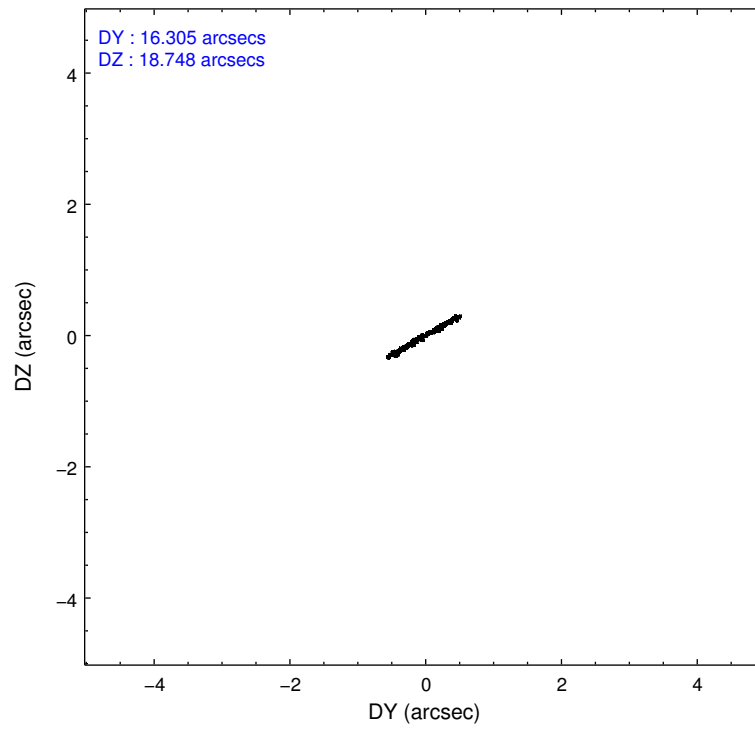
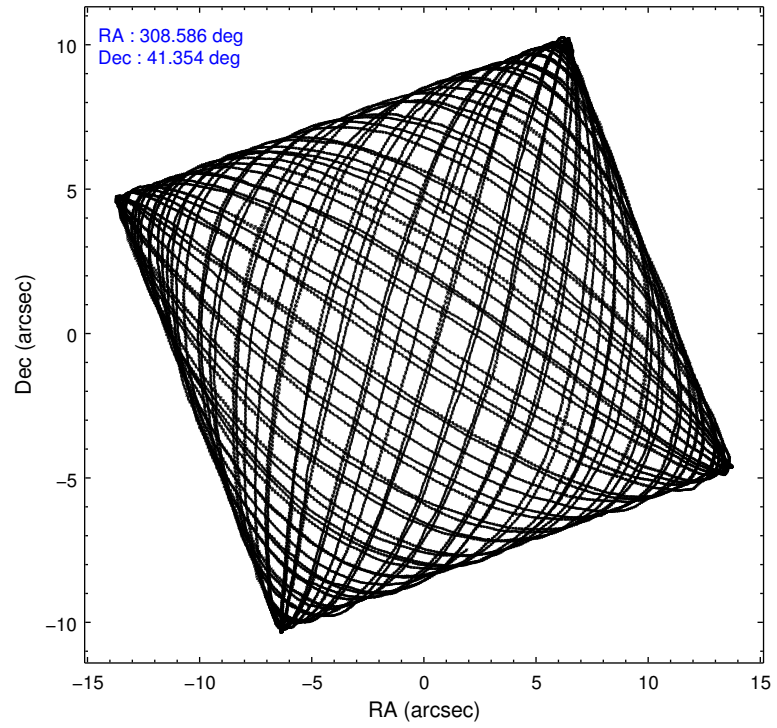
2.1.4 Events

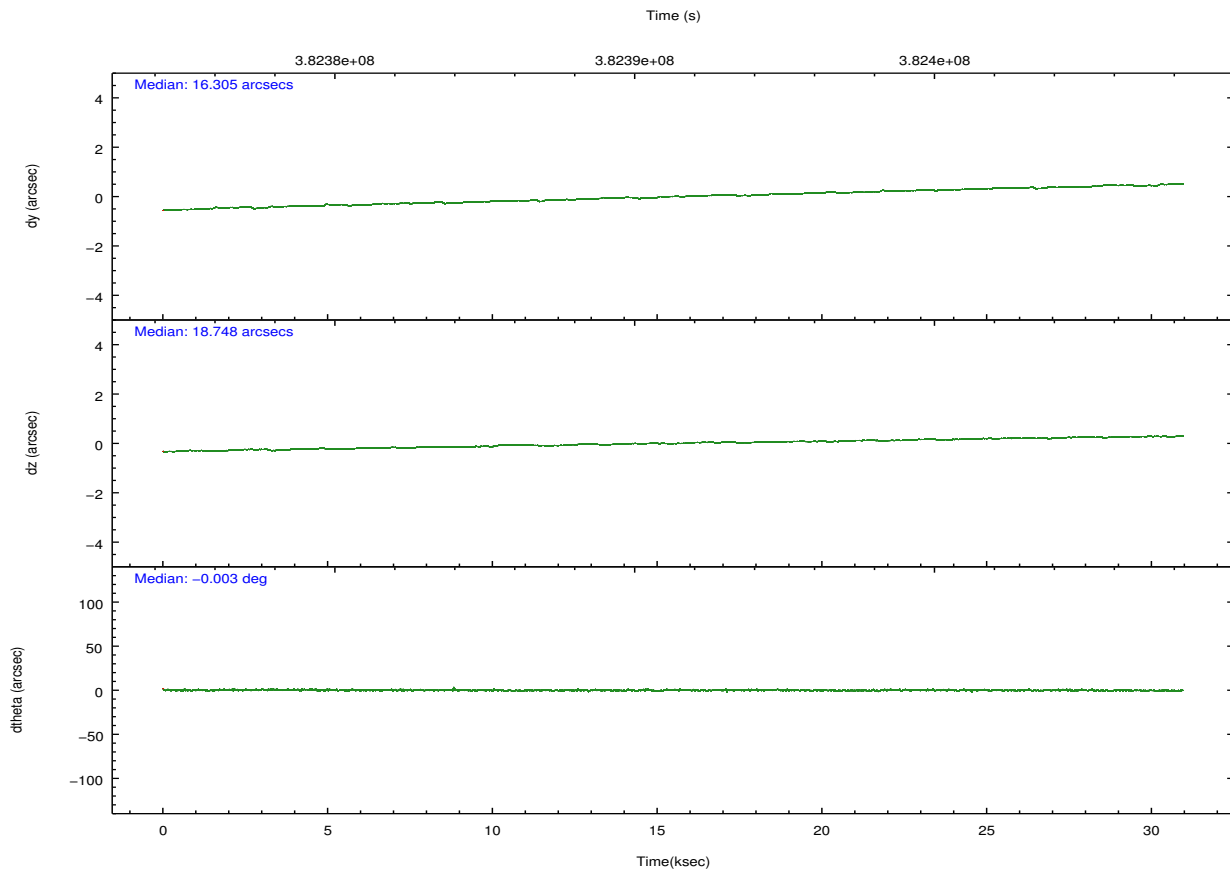
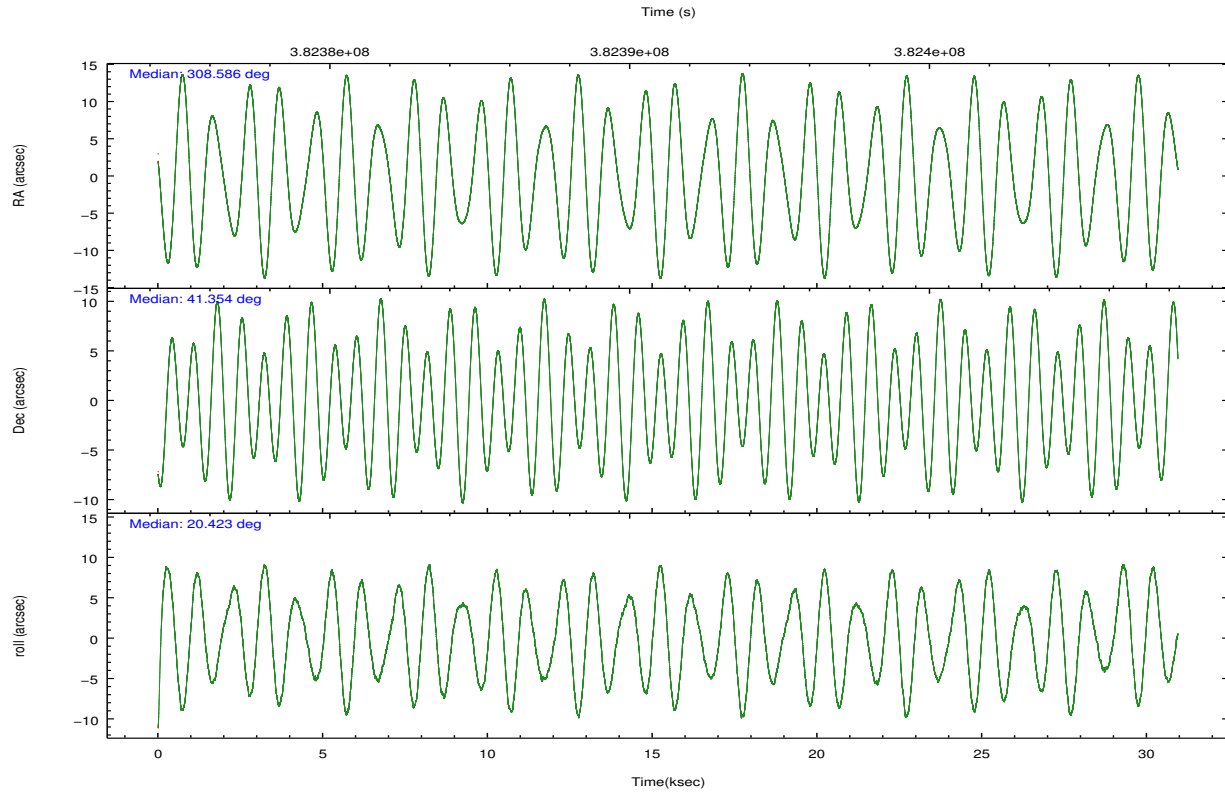
	ccd 0	ccd 1	ccd 2	ccd 3	ccd 6	ccd 7		ccd 0	ccd 1	ccd 2	ccd 3	ccd 6	ccd 7
level 1 events	201140	206869	221971	219956	227918	223767	grade 0 events	9404	10938	9714	11488	9997	11448
rejected events	176953	179566	197975	193948	202446	112847		4%	5%	4%	5%	4%	5%
rejected %	87%	86%	89%	88%	88%	50%	grade 1 events	124	122	143	147	131	354
								0%	0%	0%	0%	0%	0%
							grade 2 events	5658	5862	5531	5162	5491	23907
								2%	2%	2%	2%	2%	10%
							grade 3 events	2488	2769	2345	2613	2549	10415
								1%	1%	1%	1%	1%	4%
							grade 4 events	2421	2732	2467	2465	2555	10204
								1%	1%	1%	1%	1%	4%
							grade 5 events	7111	7651	6642	8196	8385	23656
								3%	3%	2%	3%	3%	10%
							grade 6 events	4218	5002	3942	4286	4887	54958
								2%	2%	1%	1%	2%	24%
							grade 7 events	169716	171793	191187	185599	193923	88825
								84%	83%	86%	84%	85%	39%

2.2 Compared Parameters

Parameter	Planned	Actual	Parameter	Planned	Actual
Instrument	ACIS	ACIS	Obspar format version number	7	7
Detector	ACIS-012367	ACIS-012367	Obspar file type	PREDICTED	ACTUAL
Grating	NONE	NONE	Obspar update status	NONE	UPDATED
Data mode	VFAINT	VFAINT	CCD I0 on	Y	Y
Observation mode	POINTING	POINTING	CCD I1 on	Y	Y
[deg] Pointing RA	308.562717	308.5859284150559	CCD I2 on	Y	Y
[deg] Pointing Dec	41.332806	41.35407130148594	CCD I3 on	Y	Y
[deg] Pointing Roll	20.234228	20.42758060860049	CCD S0 on	N	N
[mm] SIM focus pos	-0.782348	-0.7809083437167272	CCD S1 on	N	N
[mm] SIM defocus	0	0.001439871863259334	CCD S2 on	O2	Y
[mm] SIM translation stage pos	-233.592463	-233.5874344608287	CCD S3 on	O1	Y
[mm] SIM translation stage offset	0	-0.005018542100998502	CCD S4 on	N	N
[s] Observation start time (MET)	382377266.184000	382375629.02321	CCD S5 on	N	N
Observation start date	2010-02-12T15:53:20	2010-02-12T15:27:09	Number of optional ACIS chips dropped	0	0
[s] Observation end time (MET)	382406766.184000	382408202.49986	On-chip summing requested	N	N
Observation end date	2010-02-13T00:05:00	2010-02-13T00:30:02	Subarray requested	NONE	NONE
Read mode	TIMED	TIMED	Alternating exposures requested	N	N
			[s] Primary exposure time	0.000000	3.2

2.3 Aspect



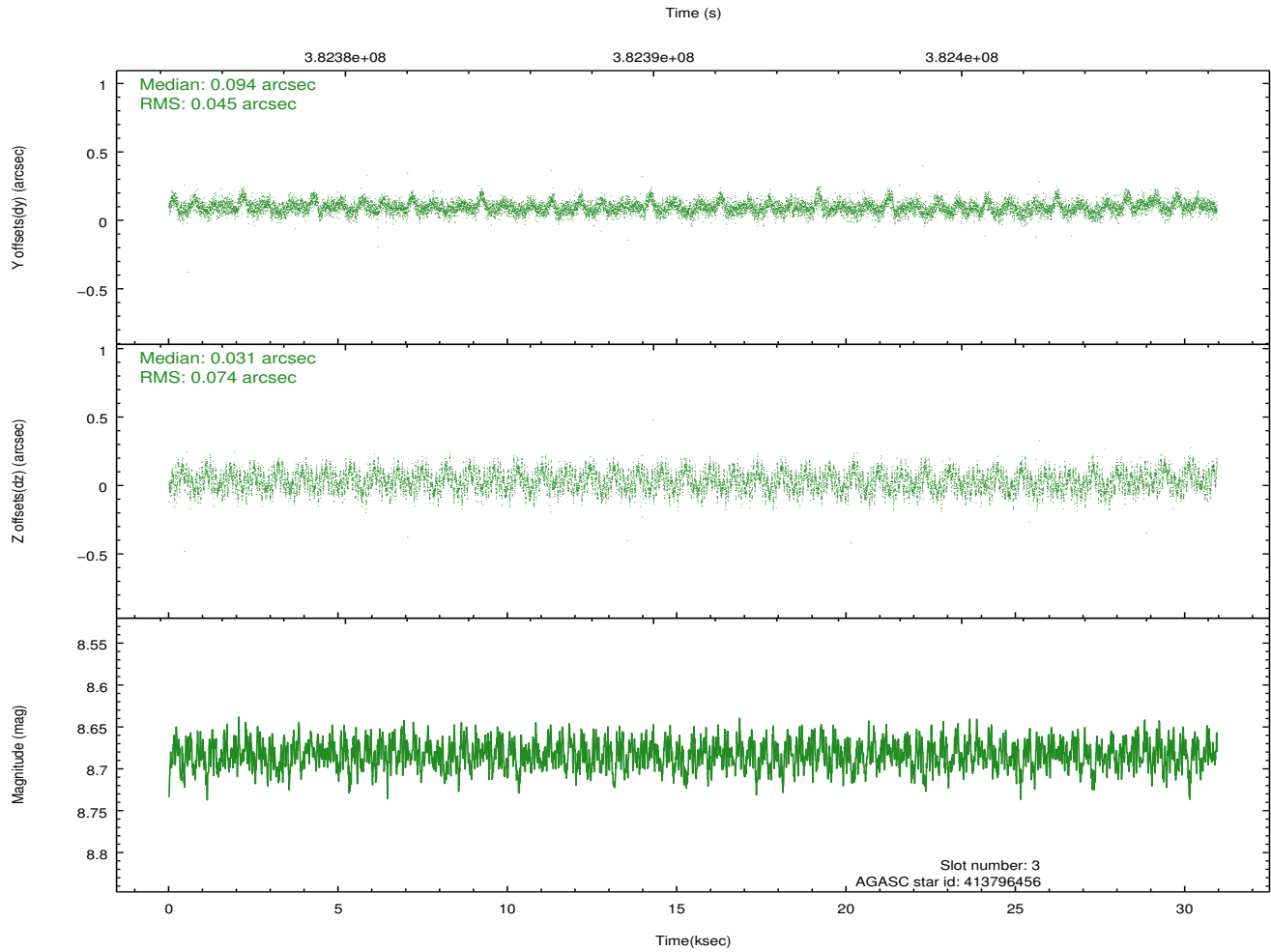
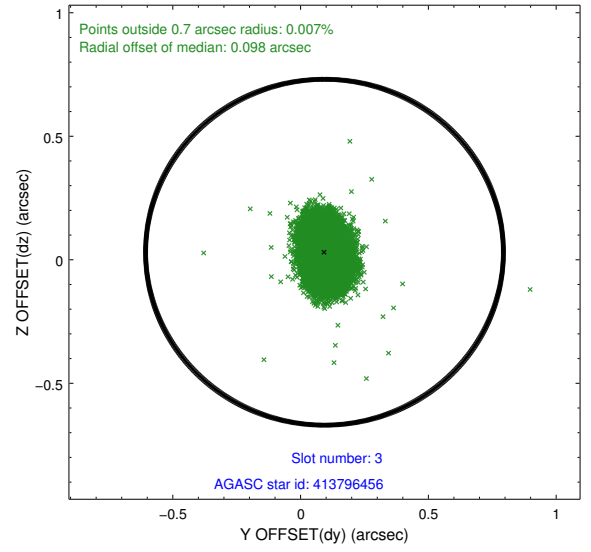
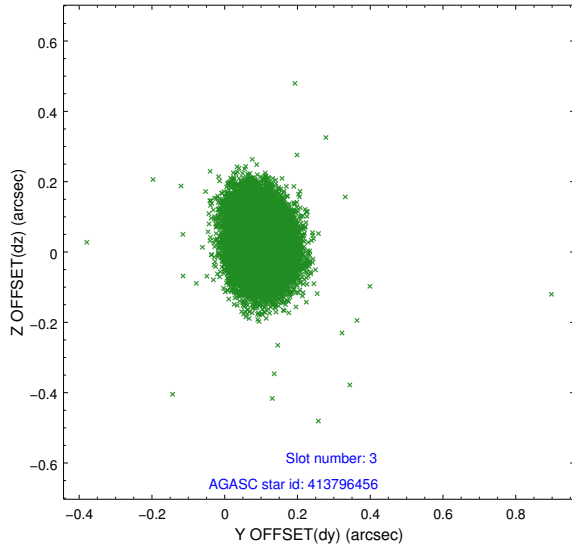


Slot Statistics

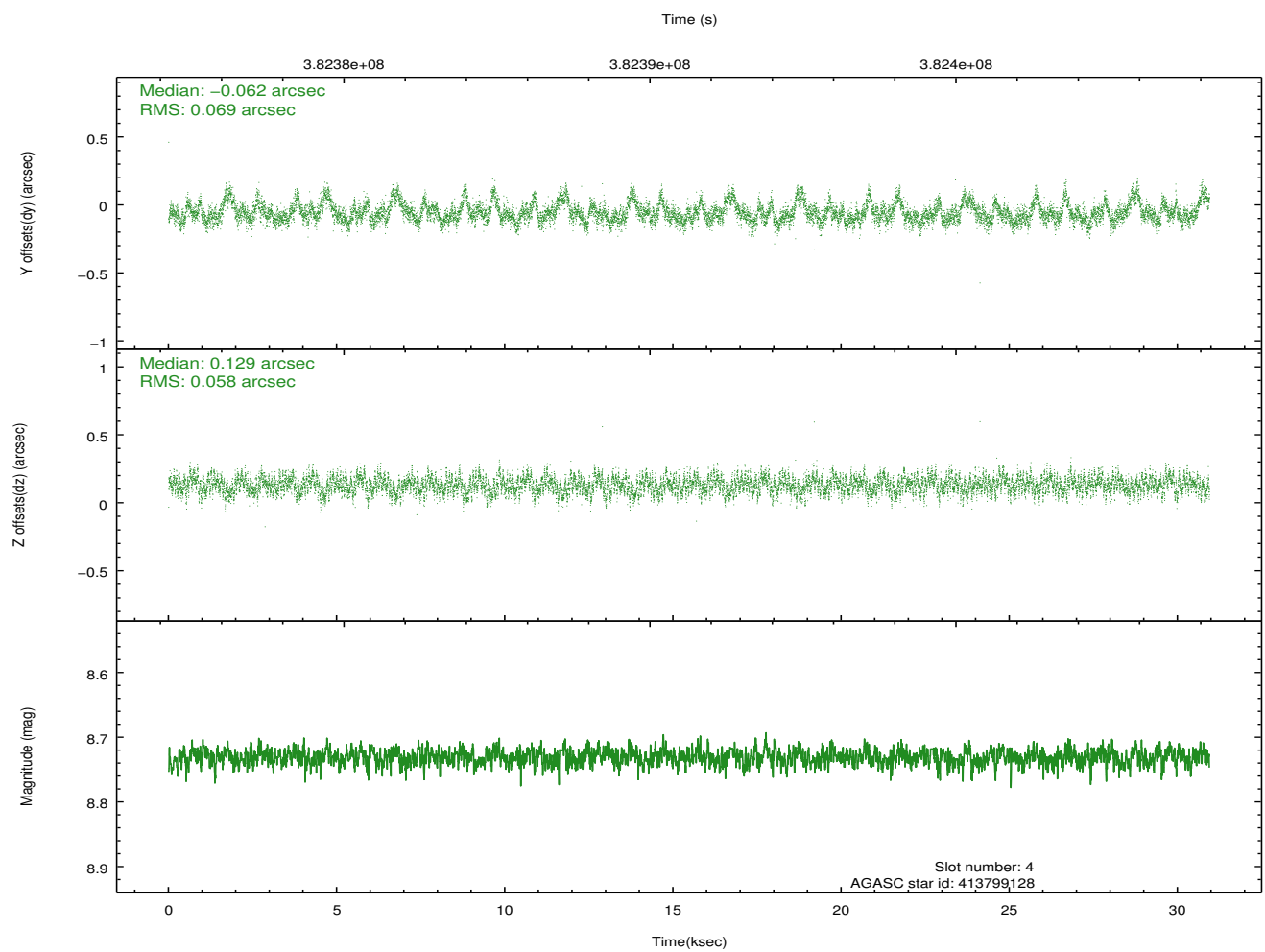
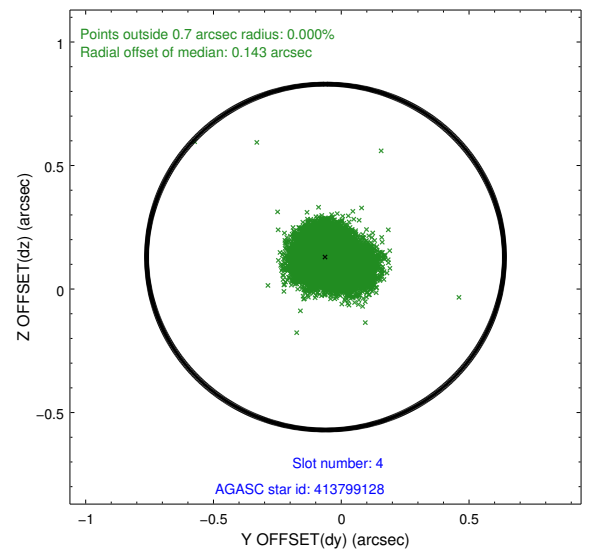
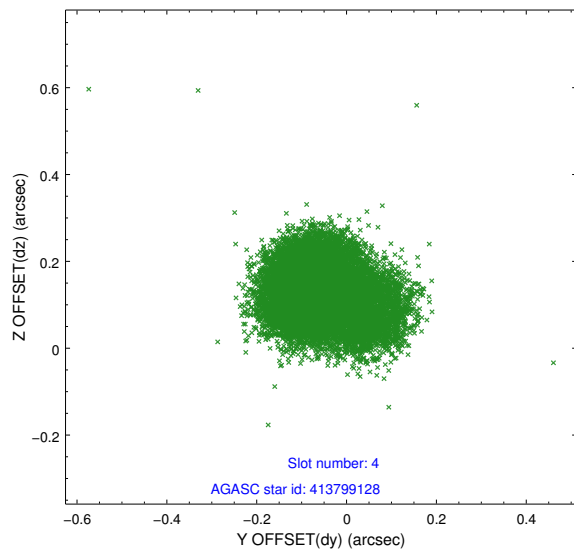
slot	status	id	mag	n_pts	med_dy	med_dz	dr1	dr2	ra	dec	mean_y	mean_z
0	FID	ACIS-I-1	7.00	7548	-0.028	0.003	0.011	0.021	0.000000	0.000000	923.11	-842.42
1	FID	ACIS-I-4	6.95	7549	0.160	0.035	0.017	0.025	0.000000	0.000000	2143.35	1057.39
2	FID	ACIS-I-5	6.99	7545	-0.227	0.033	0.013	0.020	0.000000	0.000000	-1825.03	1055.27
3	GUIDE	413796456	8.68	15086	0.094	0.031	0.093	0.145	308.312084	40.613132	-1537.90	-2193.09
4	GUIDE	413799128	8.73	15087	-0.062	0.129	0.094	0.160	307.948219	41.110579	-1838.12	-168.65
5	GUIDE	414327224	7.99	15090	0.010	0.022	0.074	0.120	309.355439	41.393115	2087.70	-526.99
6	GUIDE	413798232	8.29	15089	0.027	-0.001	0.097	0.155	309.116117	41.044272	1052.65	-1489.82
7	GUIDE	414324232	8.31	15084	-0.080	-0.176	0.065	0.107	308.637806	41.996627	1015.09	2172.82

2.4 Star Slots

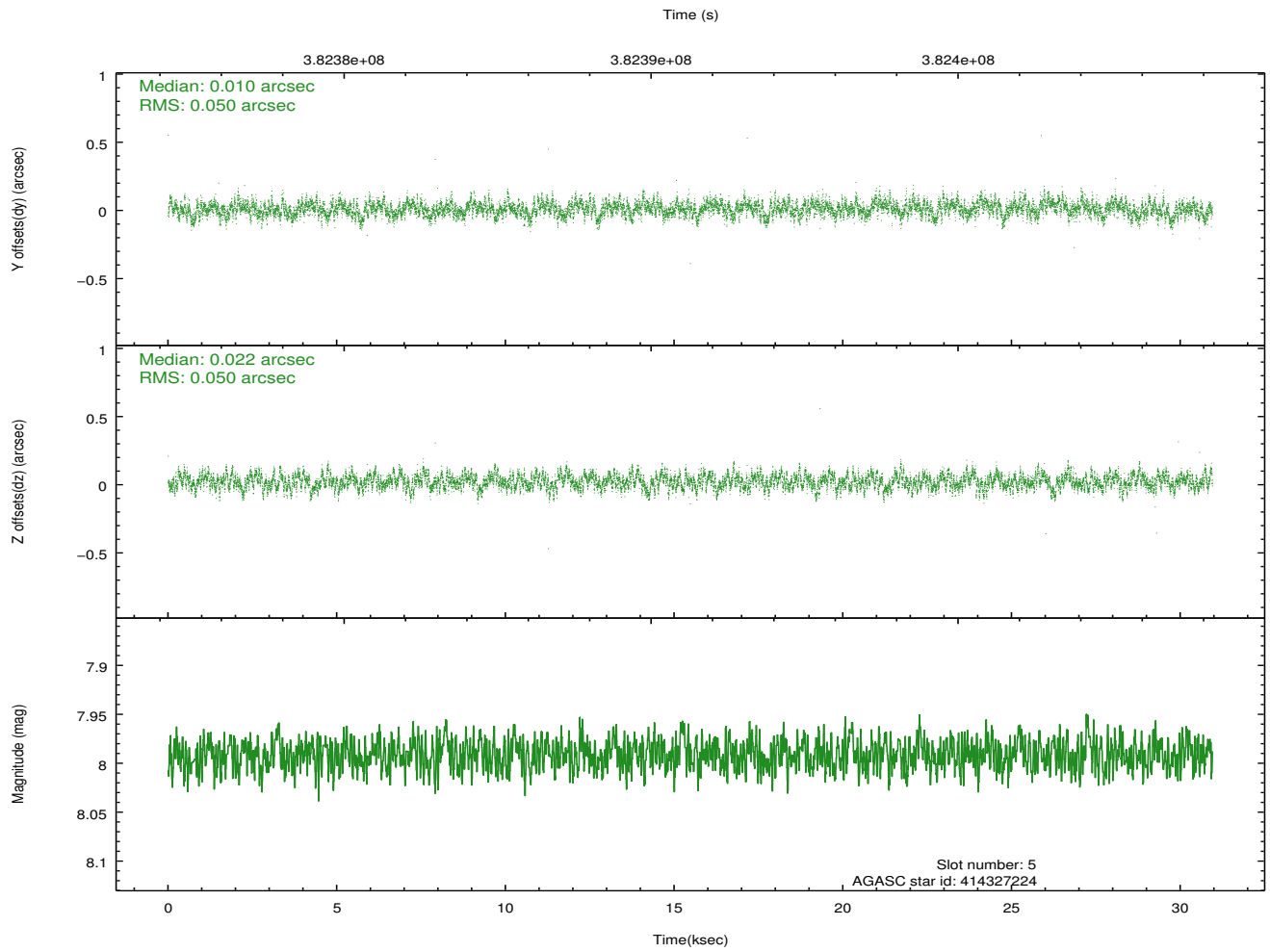
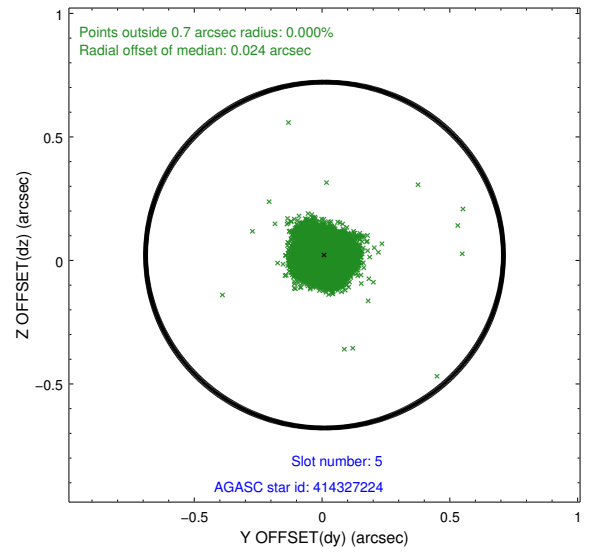
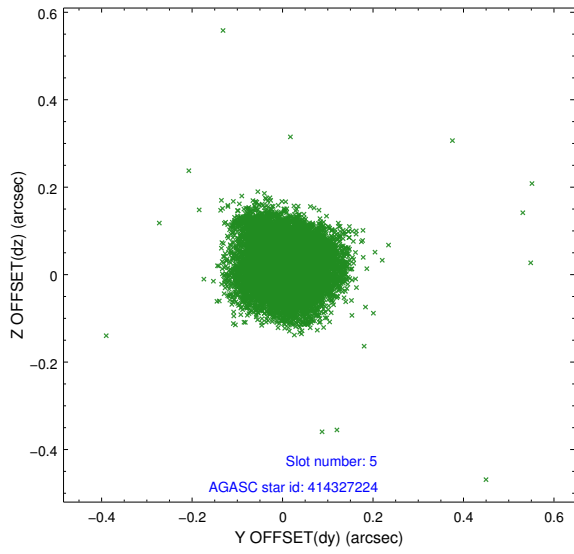
2.4.1 Slot 3



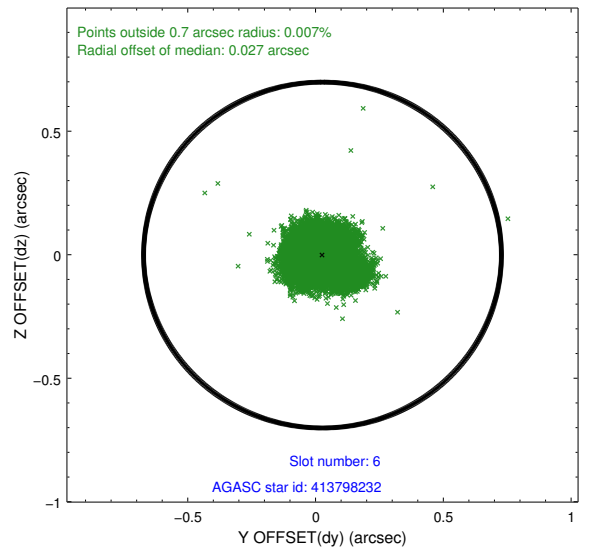
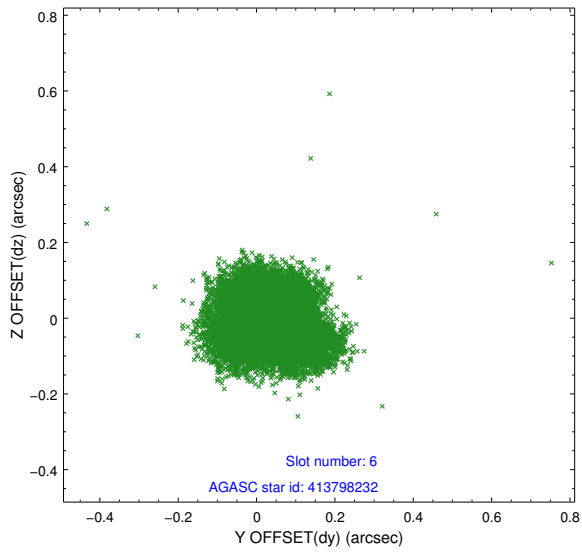
2.4.2 Slot 4



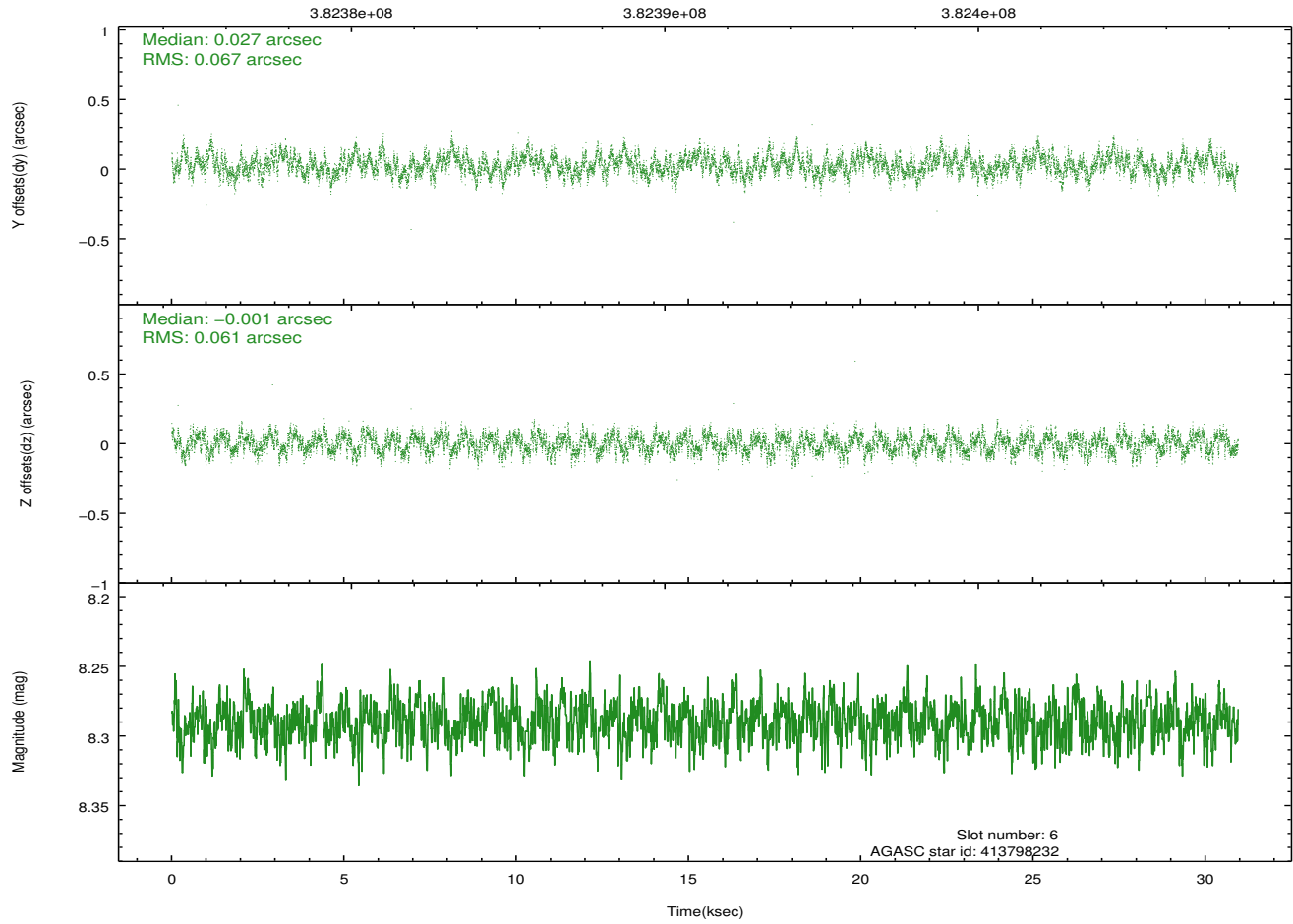
2.4.3 Slot 5



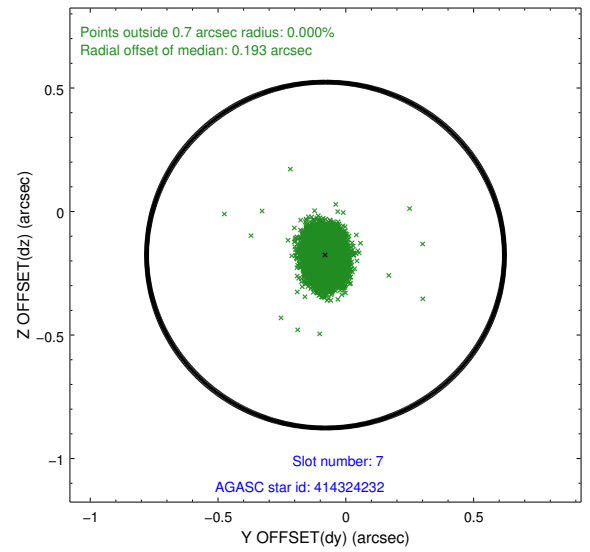
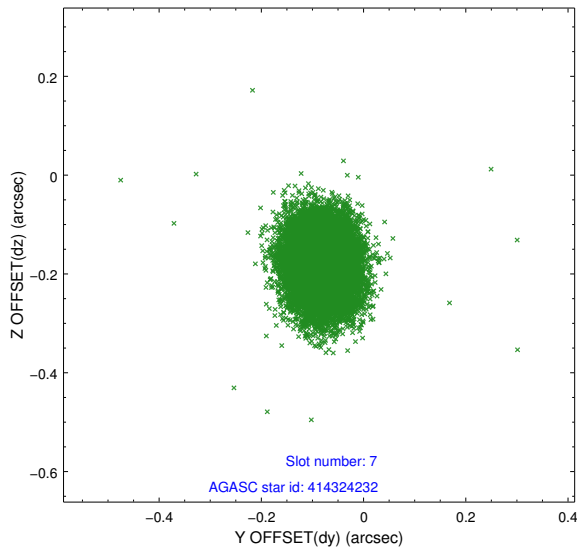
2.4.4 Slot 6



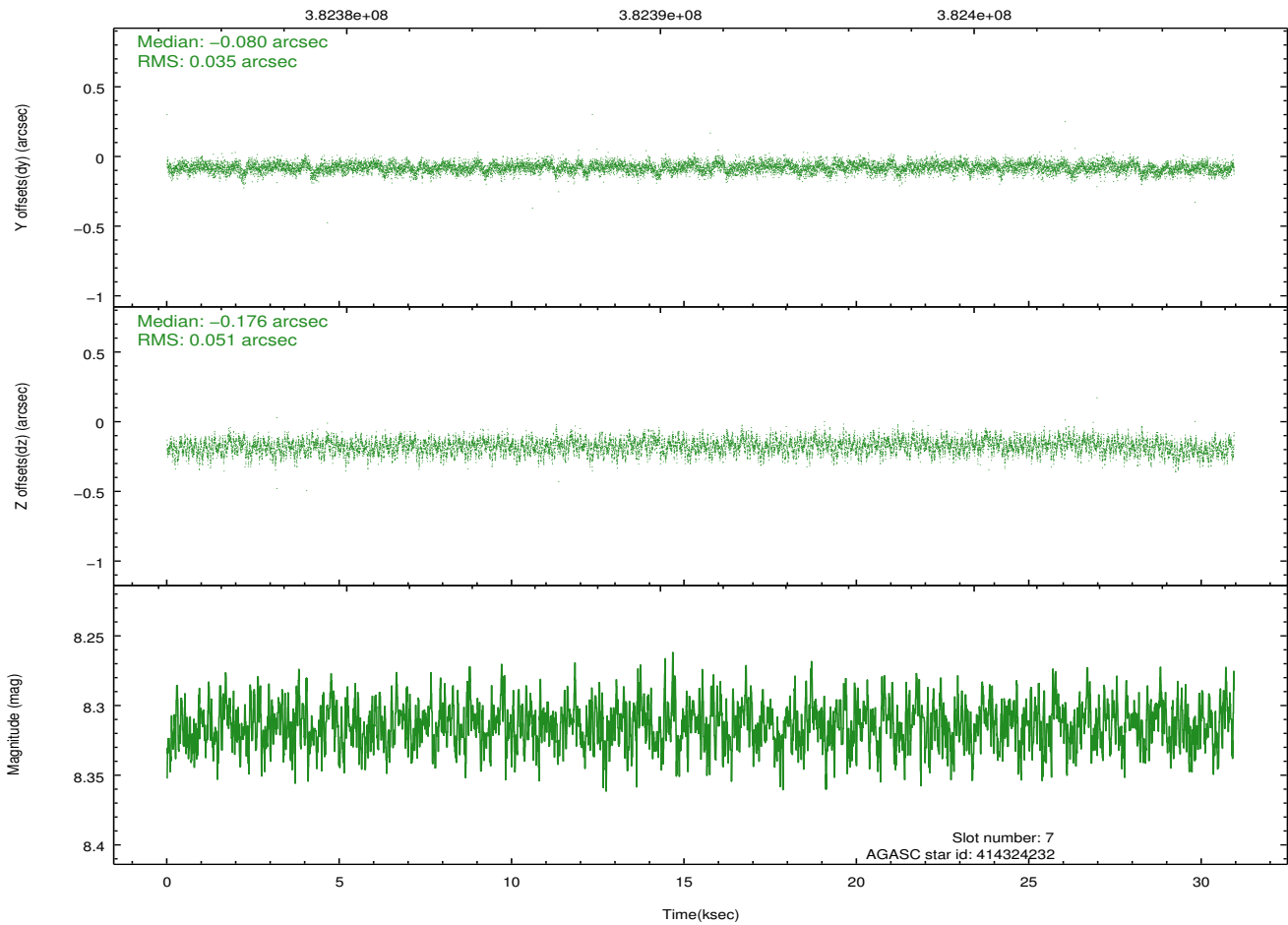
Time (s)



2.4.5 Slot 7

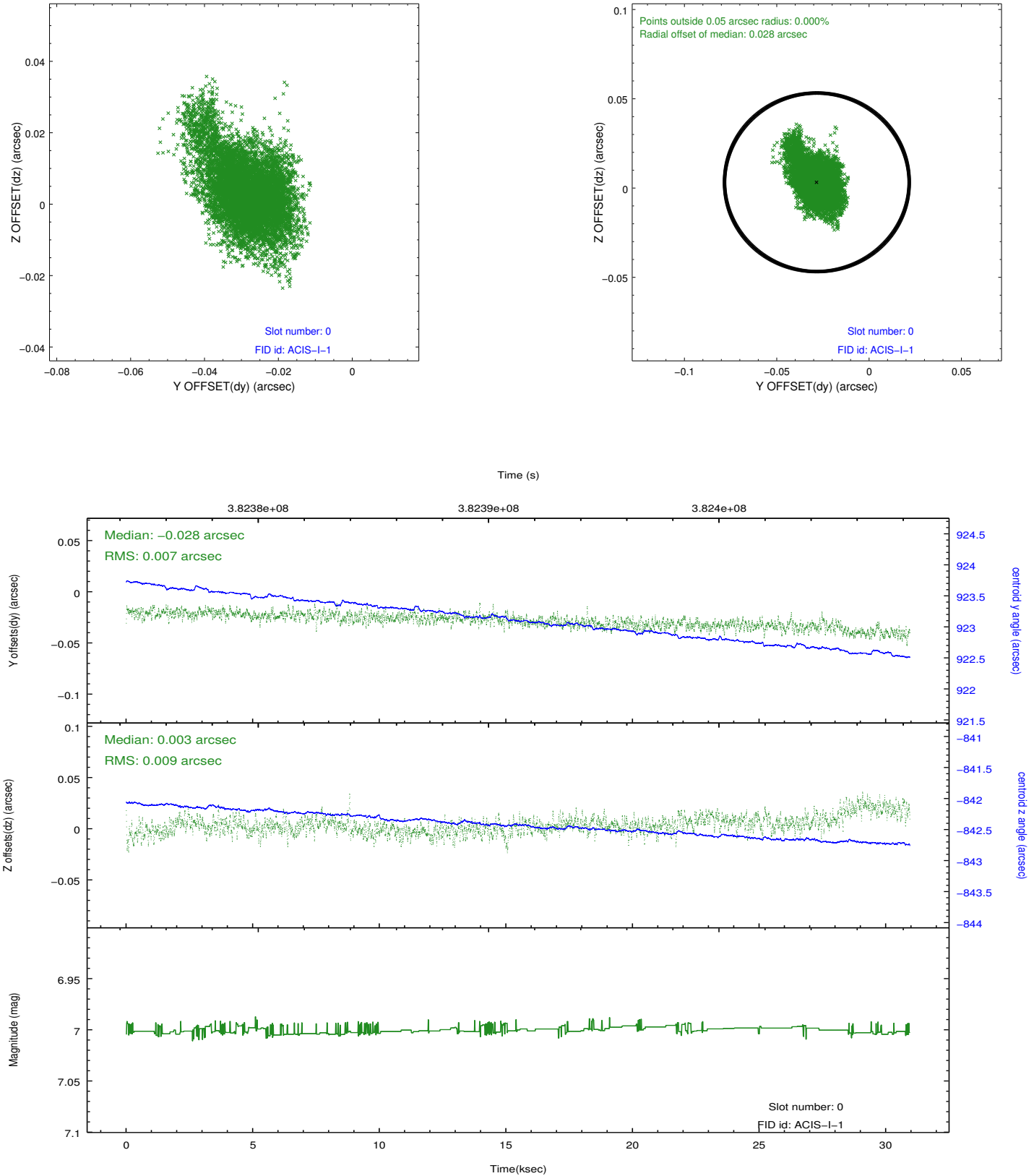


Time (s)

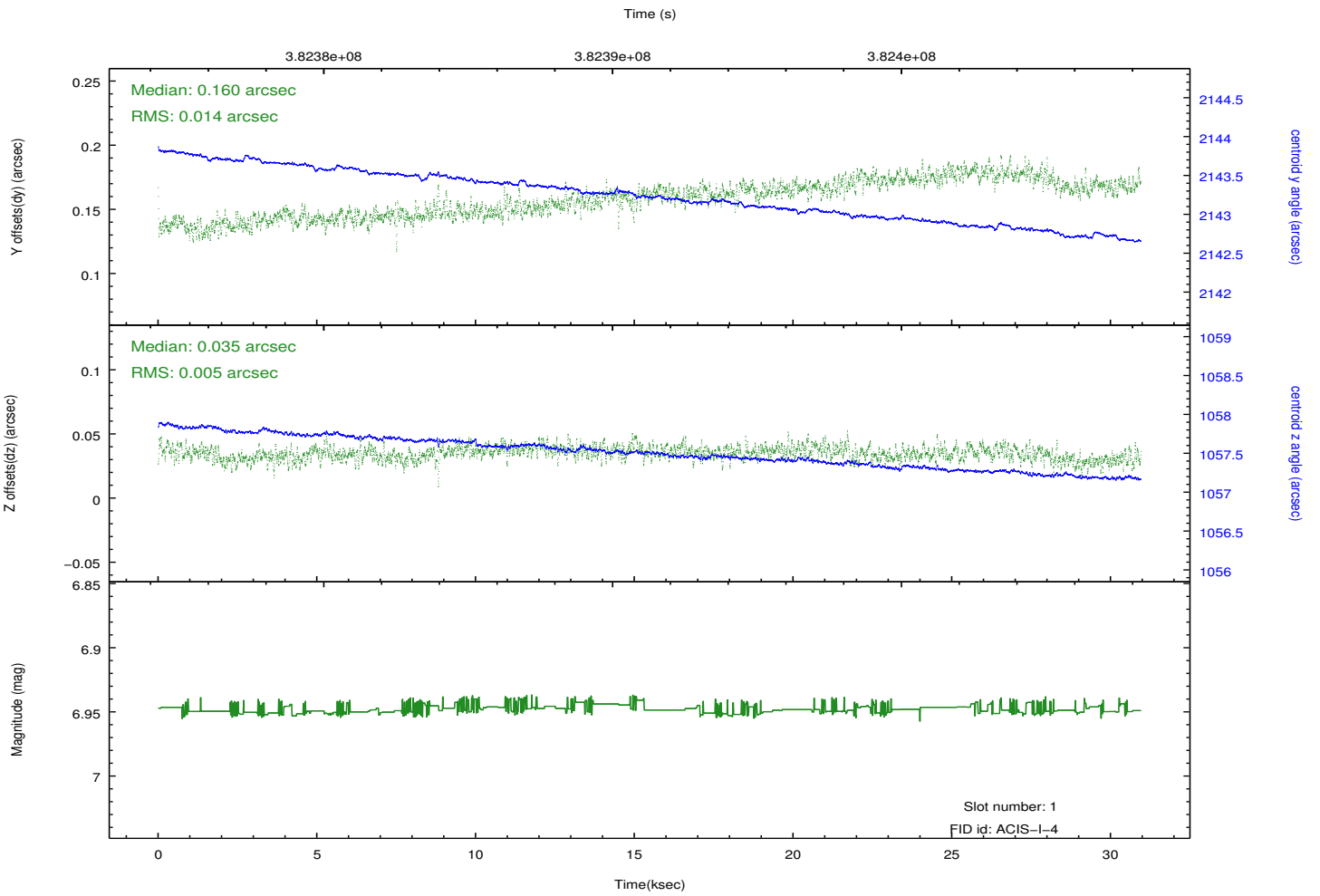
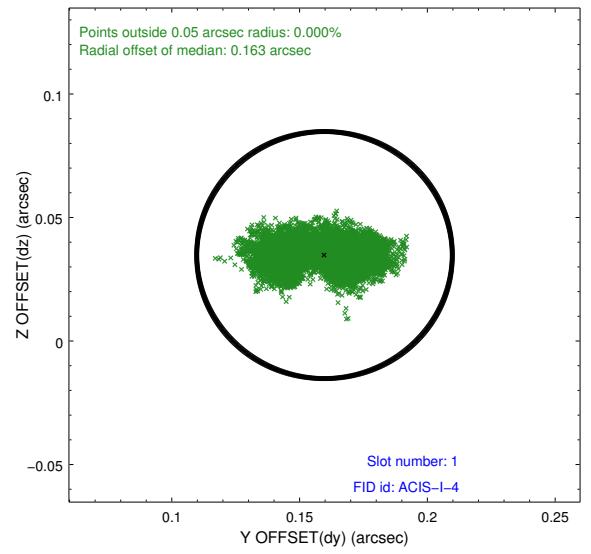
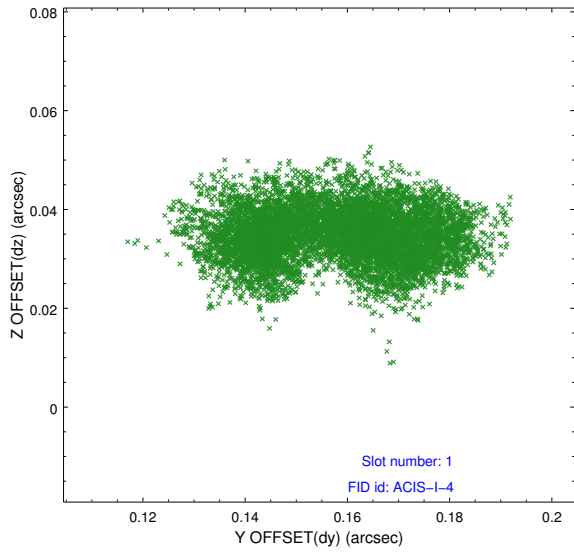


2.5 FID Slots

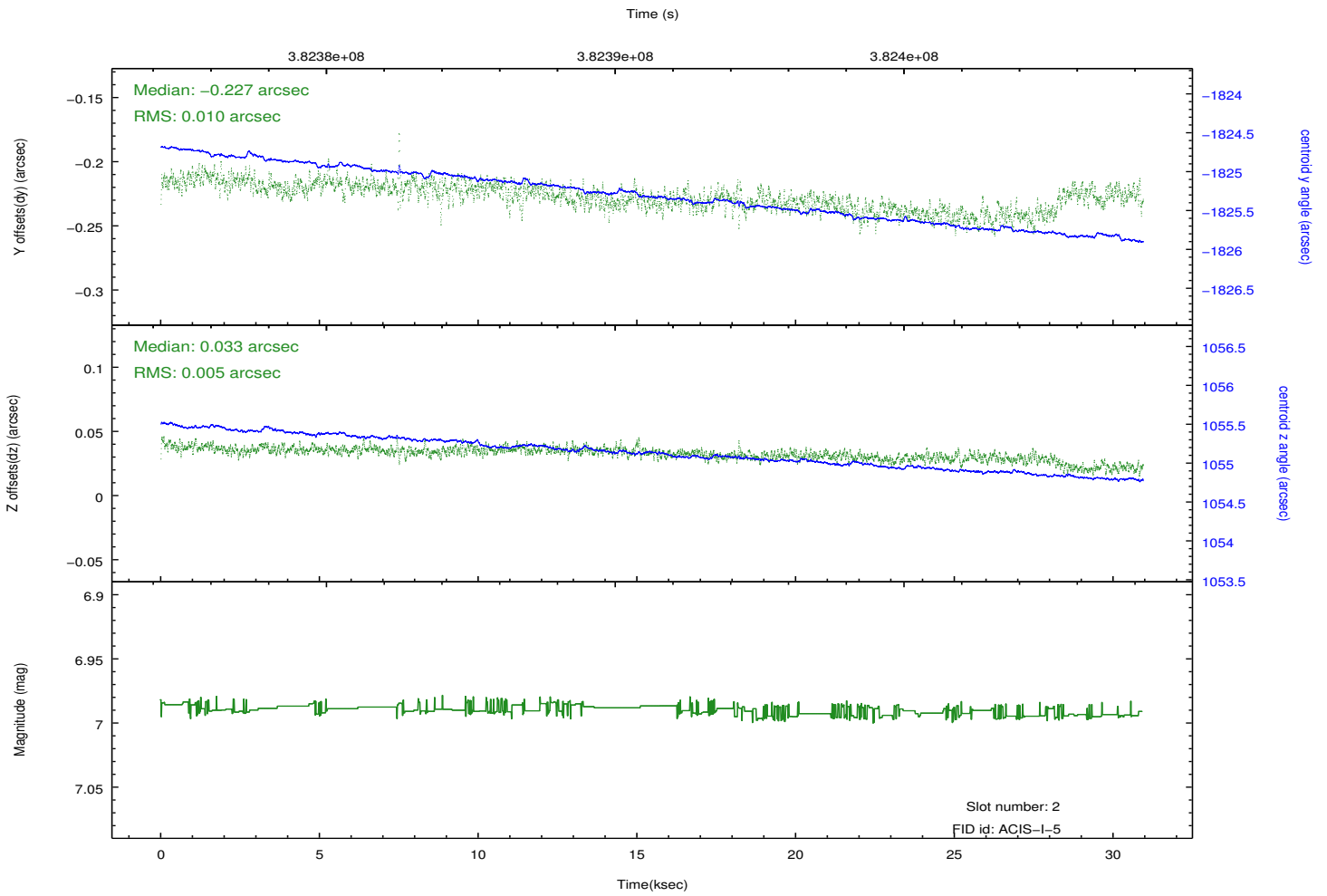
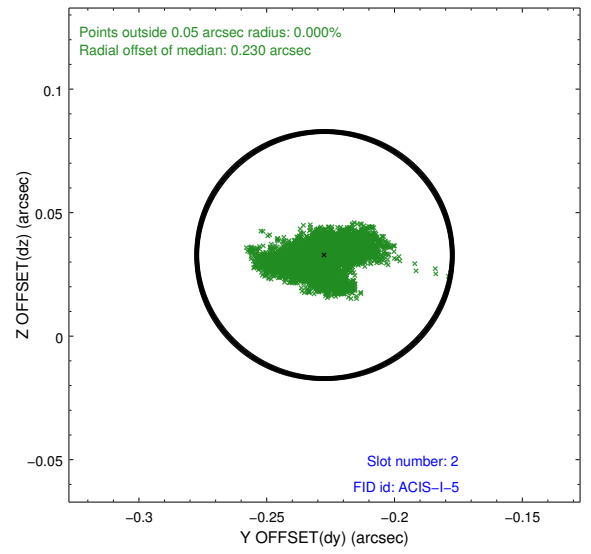
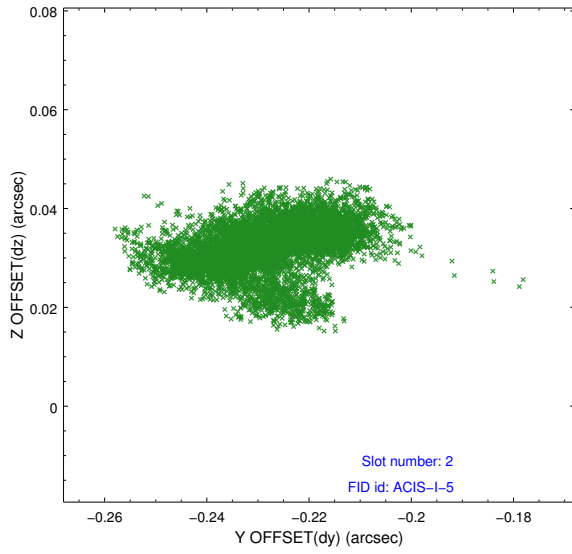
2.5.1 Slot 0



2.5.2 Slot 1



2.5.3 Slot 2



A Summary

A.1 Status

V&V Scientist	Jen Lauer
V&V Date (YYYY-MM-DD)	2012.06.27
V&V Edition	1
V&V Disposition and Status	OK
V&V Charge Time	29.5408812

A.2 Comments

Roll angle preference met.