

V&V Reference Report

L2 ASCDS Version : 8.4.5

Observation 11014 - L2 Version 2
Chandra X-Ray Center

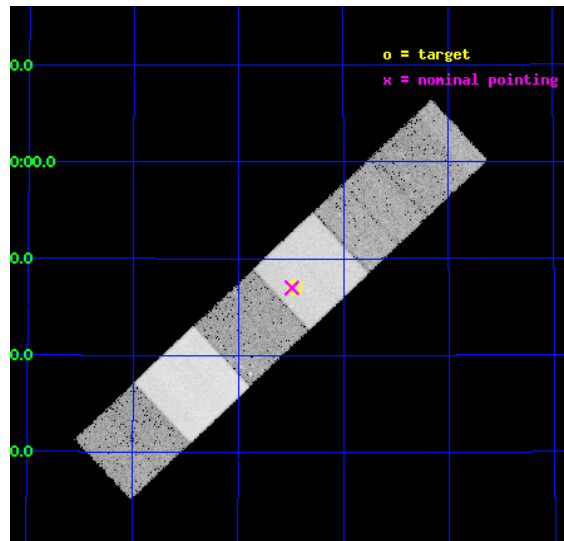
L2 Processing Date : Jun 17 2012

Contents

1	Front	2
2	OBI	3
2.1	OBI	3
2.1.1	Images	3
2.1.2	Bias	3
2.1.3	Parameters	4
2.1.4	Events	4
2.2	Compared Parameters	5
2.3	Aspect	6
2.4	Star Slots	9
2.4.1	Slot 3	9
2.4.2	Slot 4	10
2.4.3	Slot 5	11
2.4.4	Slot 6	12
2.4.5	Slot 7	13
2.5	FID Slots	14
2.5.1	Slot 0	14
2.5.2	Slot 1	15
2.5.3	Slot 2	16
A	Summary	17
A.1	Status	17
A.2	Comments	17

1 Front

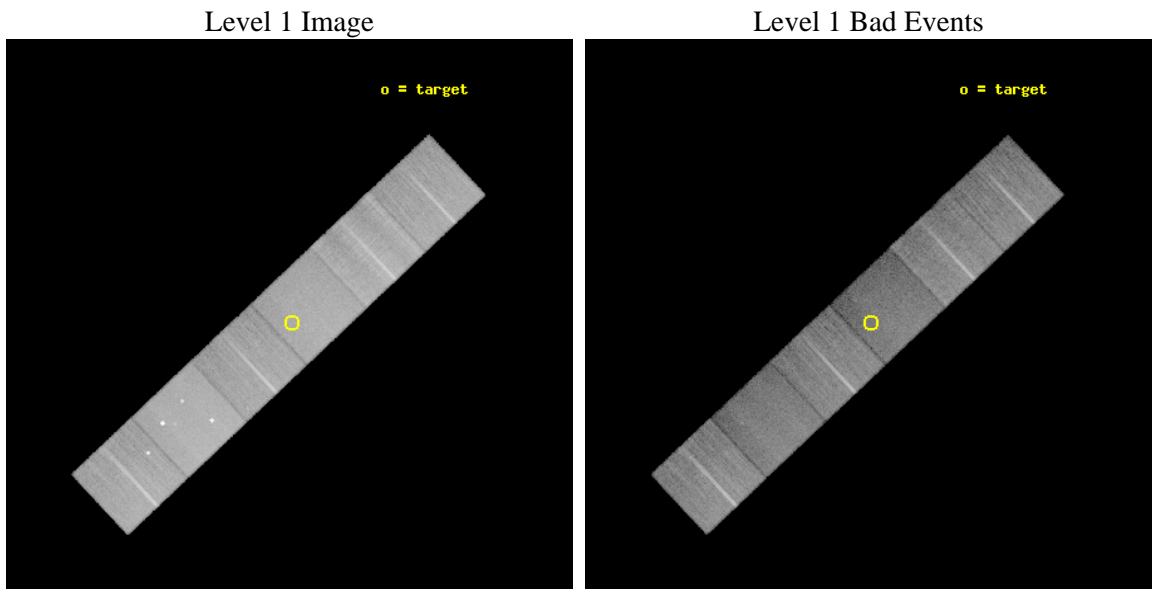
seq_num	200643	Sequence number
obs_id	11014	Observation id
title	Exploring a New Stellar X-ray Frontier: Investigating the X-ray Emissions of RR Lyr Variables	Proposal title
observer	Dr. Edward Guinan	Principal investigator
object	RR Lyr	Source name
dtcycle	0	
cycle	P	events from which exps? Prim/Second/Both
ra_targ	291.36625	Observer's specified target RA [deg]
dec_targ	42.784333	Observer's specified target Dec [deg]
ra_nom	291.37273061734	Nominal RA [deg]
dec_nom	42.783350051522	Nominal Dec [deg]
roll_nom	316.7260269675	Nominal Roll [deg]
revision	2	Processing version of data
ontime	20220.619260907	Sum of GTIs [s]
livetime	19964.57360443	Livetime [s]
ontime4	20220.66030091	Sum of GTIs [s]
ontime5	20220.578220904	Sum of GTIs [s]
ontime6	20220.537180901	Sum of GTIs [s]
ontime7	20220.619260907	Sum of GTIs [s]
ontime8	20217.255170584	Sum of GTIs [s]
ontime9	20220.455100894	Sum of GTIs [s]
l2events	277481	Number of level 2 events



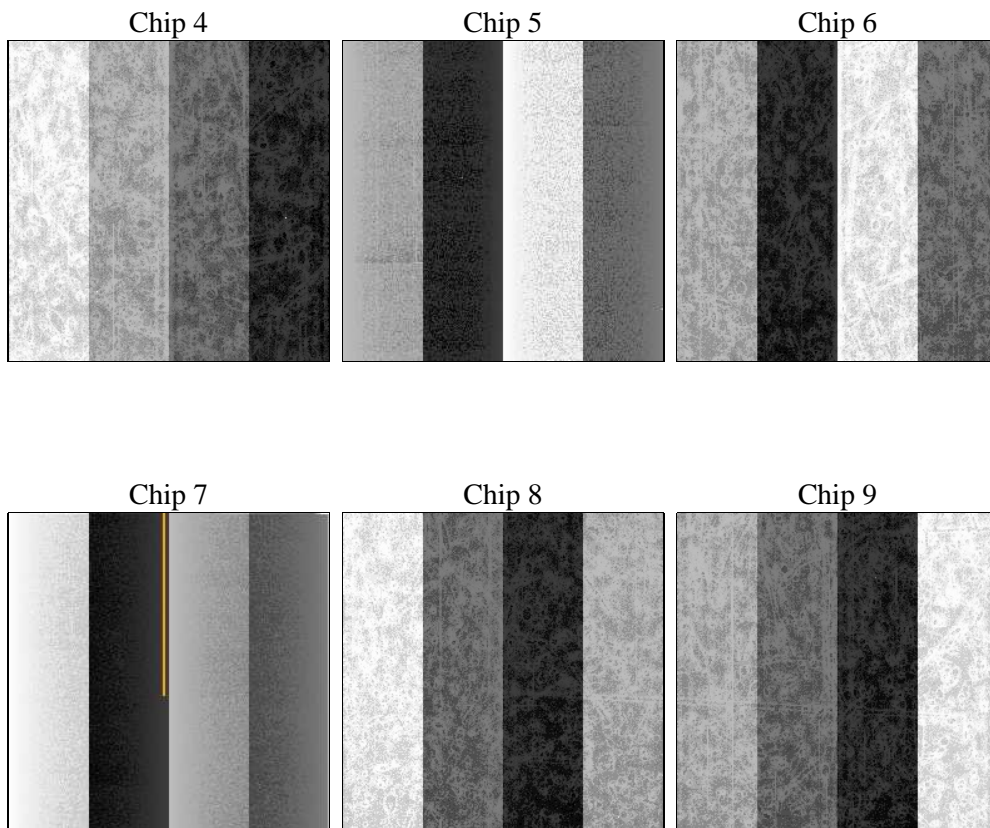
2 OBI

2.1 OBI

2.1.1 Images



2.1.2 Bias



2.1.3 Parameters

obi_num	1	Obi number	sched_exp_time	20000.000000	[s] Scheduled observation exposure time
ascdsver	8.4.5	Processing system revision	ontime	20220.619260907	Sum of GTIs [s]
caldbver	4.4.10	 	ontime4	20220.66030091	Sum of GTIs [s]
date	2012-06-17T06:38:25	Date and time of file creation	ontime5	20220.578220904	Sum of GTIs [s]
revision	2	Processing version of data	ontime6	20220.537180901	Sum of GTIs [s]
			ontime7	20220.619260907	Sum of GTIs [s]
			ontime8	20217.255170584	Sum of GTIs [s]
			ontime9	20220.455100894	Sum of GTIs [s]
			l1events	1247233	Number of level 1 events

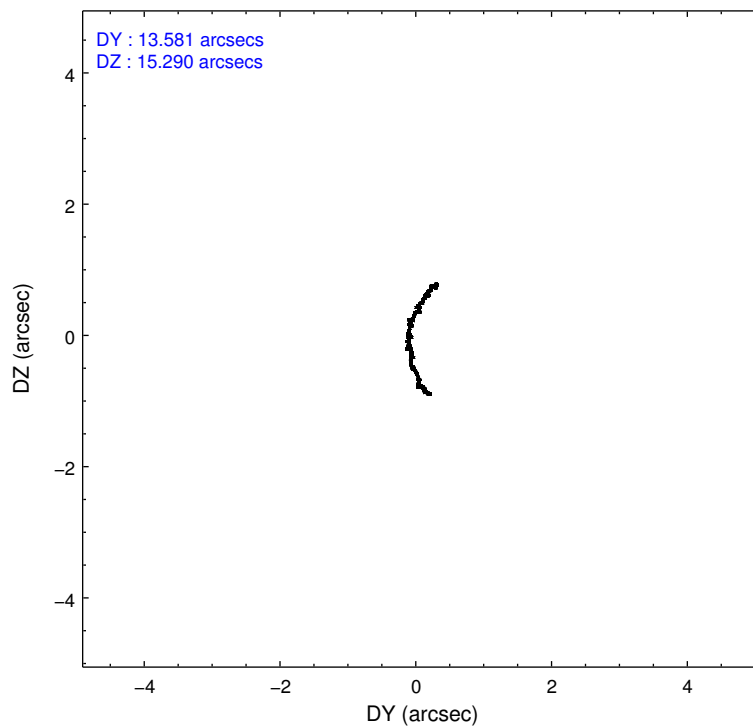
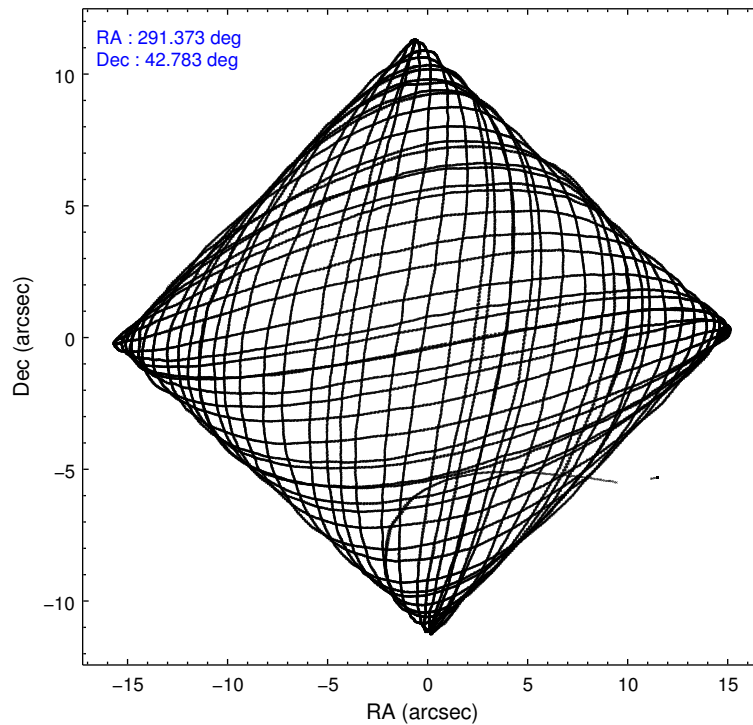
2.1.4 Events

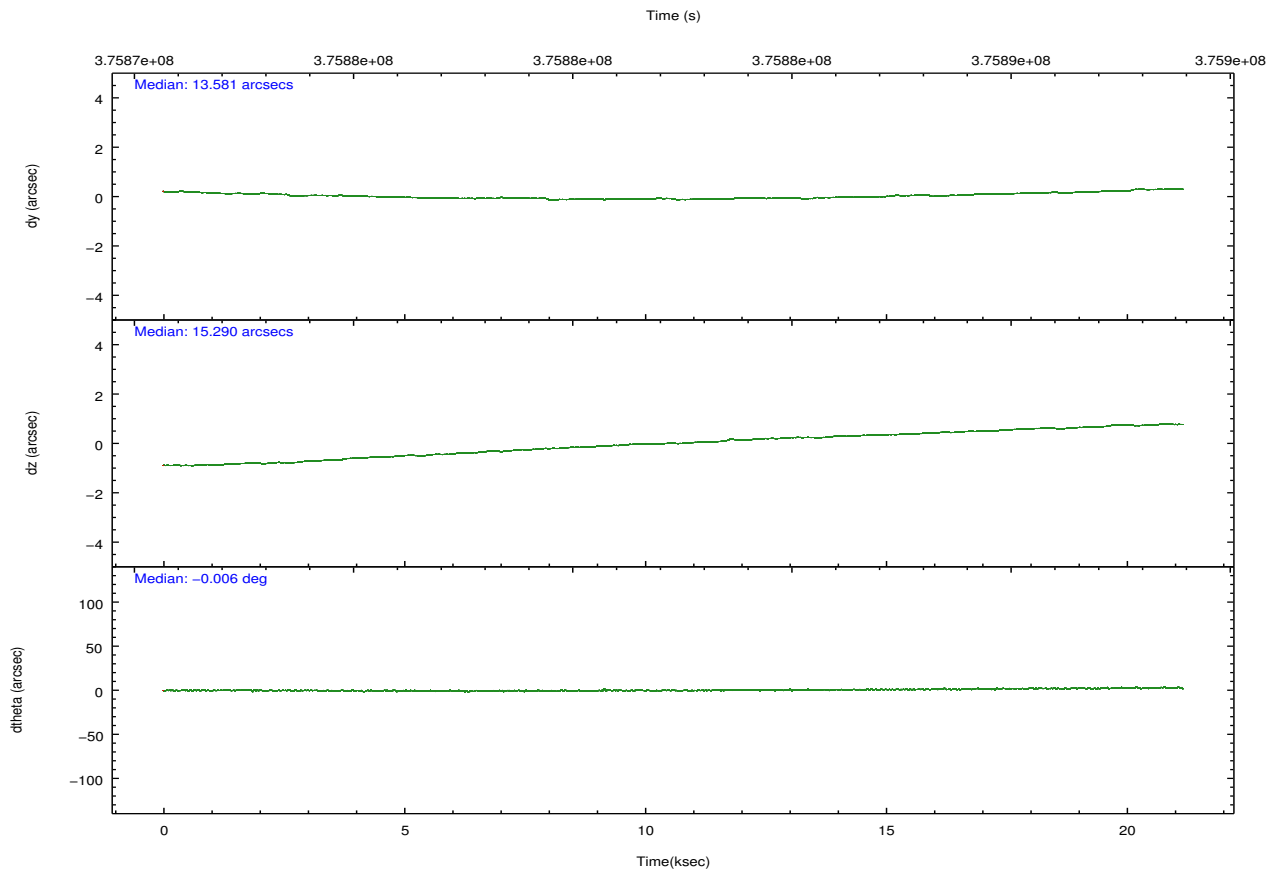
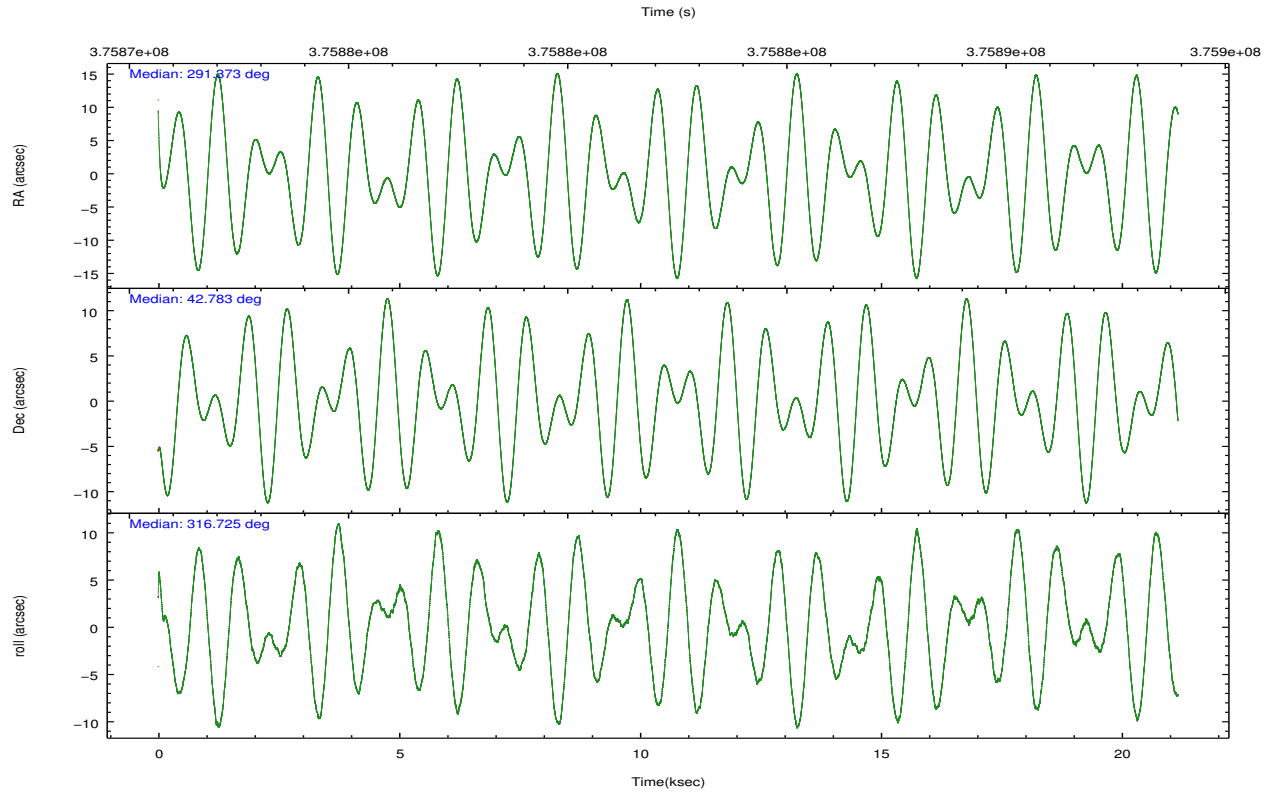
	ccd 4	ccd 5	ccd 6	ccd 7	ccd 8	ccd 9		ccd 4	ccd 5	ccd 6	ccd 7	ccd 8	ccd 9
level 1 events	206390	258290	176974	202325	228193	175061	grade 0 events	10977	14676	6647	8763	17690	7613
rejected events	183200	125407	158126	110046	170184	154984		5%	5%	3%	4%	7%	4%
rejected %	88%	48%	89%	54%	74%	88%	grade 1 events	238	510	110	287	203	101
								0%	0%	0%	0%	0%	0%
							grade 2 events	4884	43063	4234	18884	13373	4289
								2%	16%	2%	9%	5%	2%
							grade 3 events	2093	5085	1941	8280	6264	2102
								1%	1%	1%	4%	2%	1%
							grade 4 events	1961	4863	1920	8188	5714	2005
								0%	1%	1%	4%	2%	1%
							grade 5 events	7419	19708	7388	20979	10777	8259
								3%	7%	4%	10%	4%	4%
							grade 6 events	3280	65217	4107	48181	14973	4069
								1%	25%	2%	23%	6%	2%
							grade 7 events	175538	105168	150627	88763	159199	146623
								85%	40%	85%	43%	69%	83%

2.2 Compared Parameters

Parameter	Planned	Actual	Parameter	Planned	Actual
Instrument	ACIS	ACIS	Obspar format version number	7	7
Detector	ACIS-456789	ACIS-456789	Obspar file type	PREDICTED	ACTUAL
Grating	NONE	NONE	Obspar update status	NONE	UPDATED
Data mode	FAINT	FAINT	Number of optional ACIS chips dropped	0	0
Observation mode	POINTING	POINTING	On-chip summing requested	N	N
[deg] Pointing RA	291.336343	291.3727306173375	Subarray requested	NONE	NONE
[deg] Pointing Dec	42.789264	42.78335005152249	Alternating exposures requested	N	N
[deg] Pointing Roll	316.594112	316.7260269675047	[s] Primary exposure time	0.000000	3.2
[mm] SIM focus pos	-0.684267	-0.6828225247311905			
[mm] SIM defocus	0	0.001444936568705701			
[mm] SIM translation stage pos	-190.132523	-190.1400660498719			
[mm] SIM translation stage offset	0	0.00754346686406393			
[s] Observation start time (MET)	375872685.184000	375870758.31927			
Observation start date	2009-11-29T09:03:39	2009-11-29T08:32:38			
[s] Observation end time (MET)	375892685.184000	375893360.08291			
Observation end date	2009-11-29T14:36:59	2009-11-29T14:49:20			
Read mode	TIMED	TIMED			

2.3 Aspect



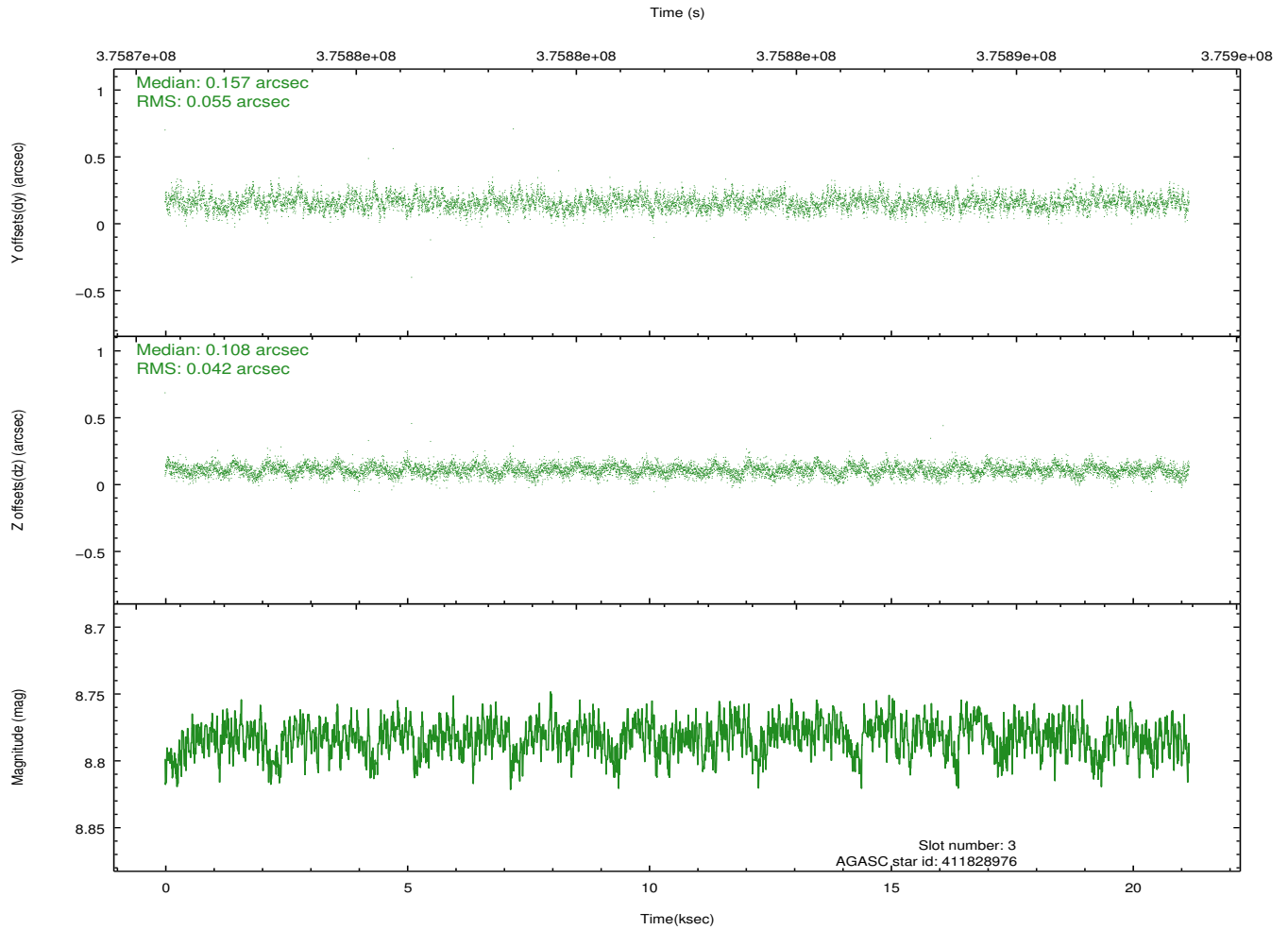
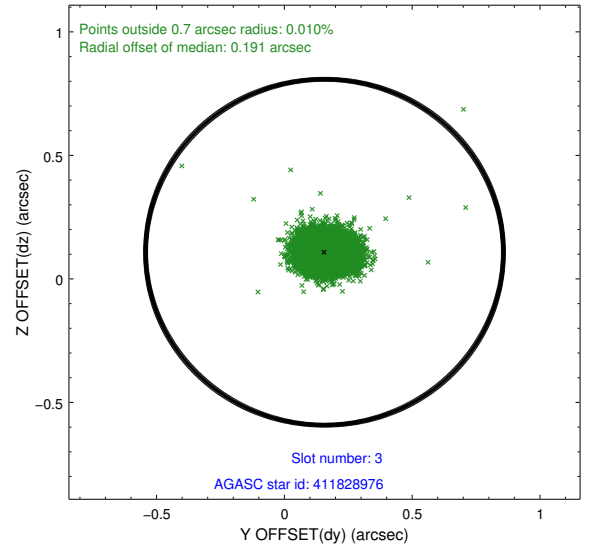
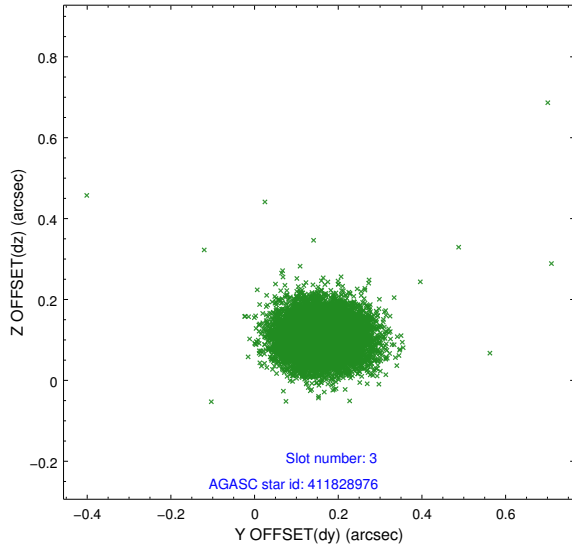


Slot Statistics

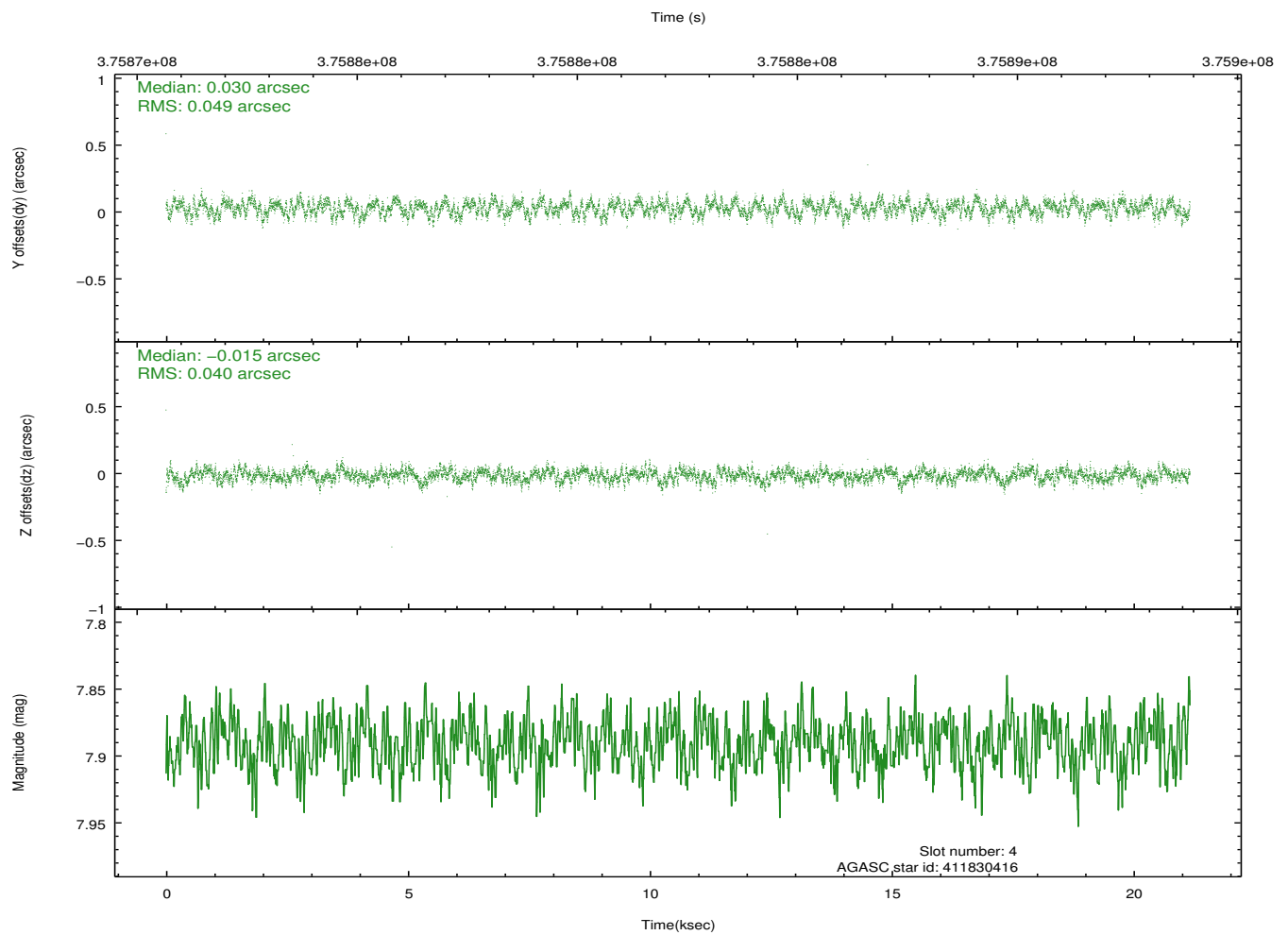
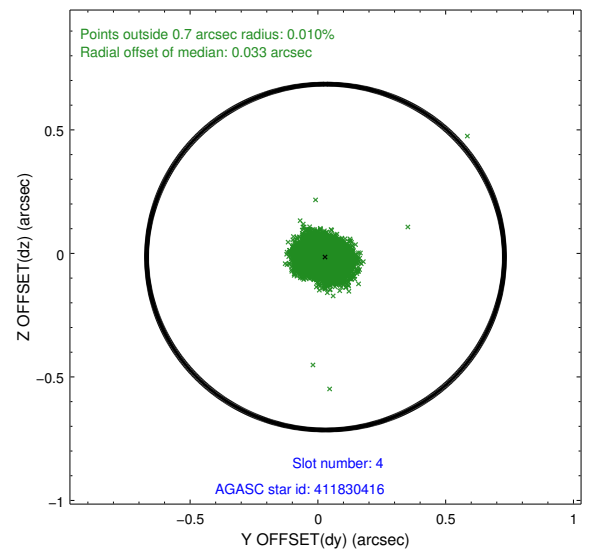
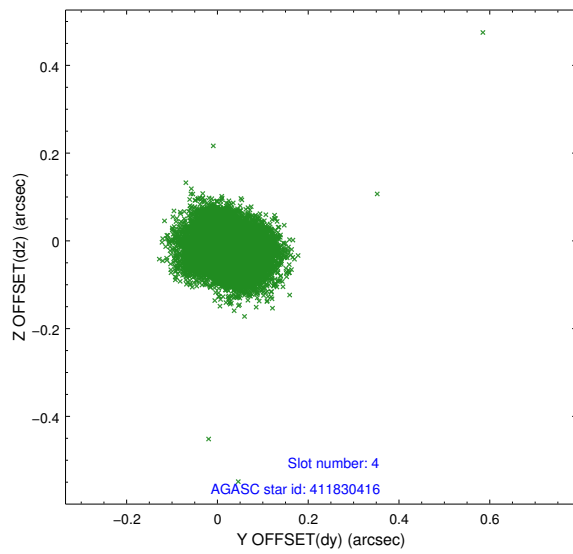
slot	status	id	mag	n_pts	med_dy	med_dz	dr1	dr2	ra	dec	mean_y	mean_z
0	FID	ACIS-S-1	6.95	5163	0.060	-0.045	0.026	0.042	0.000000	0.000000	929.58	-1732.31
1	FID	ACIS-S-5	6.98	5163	-0.148	0.030	0.009	0.018	0.000000	0.000000	-1819.56	165.12
2	FID	ACIS-S-6	7.09	5164	0.064	0.029	0.023	0.035	0.000000	0.000000	394.93	809.29
3	GUIDE	411828976	8.78	10312	0.157	0.108	0.072	0.118	292.329397	42.641417	2265.97	1432.00
4	GUIDE	411830416	7.89	10324	0.030	-0.015	0.067	0.106	291.988482	42.776643	1278.37	1157.86
5	GUIDE	411834560	7.46	10327	-0.079	0.065	0.071	0.113	290.751565	42.974191	-1579.93	-570.58
6	GUIDE	412353568	7.99	10322	-0.089	-0.021	0.069	0.113	291.202869	43.521801	-2065.54	1676.58
7	GUIDE	411832176	7.82	5162	-0.057	-0.272	0.062	0.097	291.366307	42.784360	69.91	39.67

2.4 Star Slots

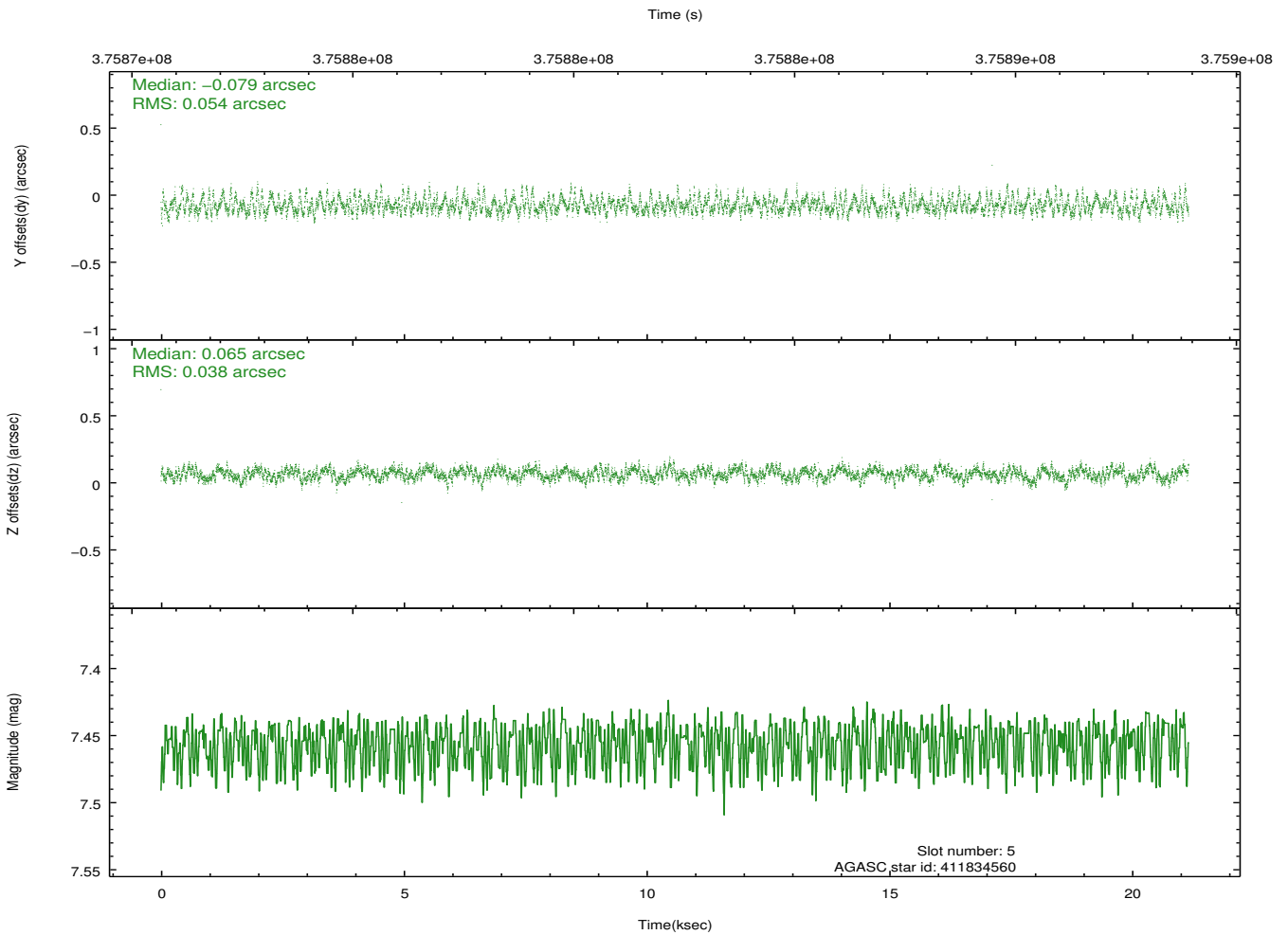
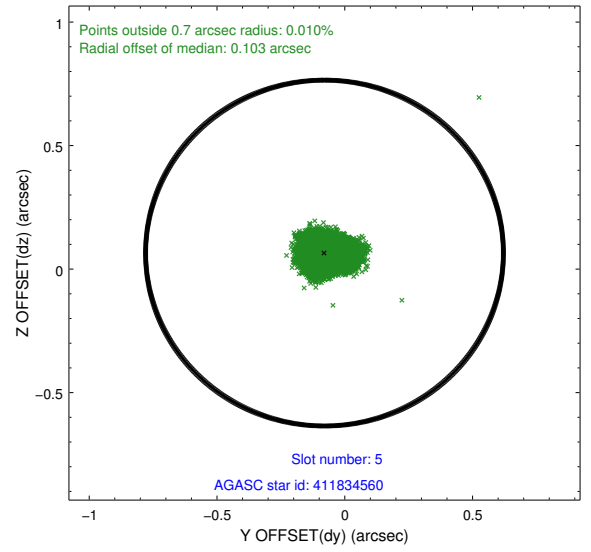
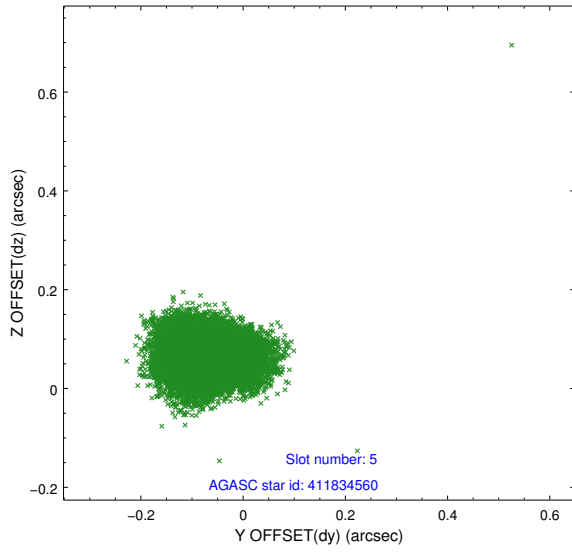
2.4.1 Slot 3



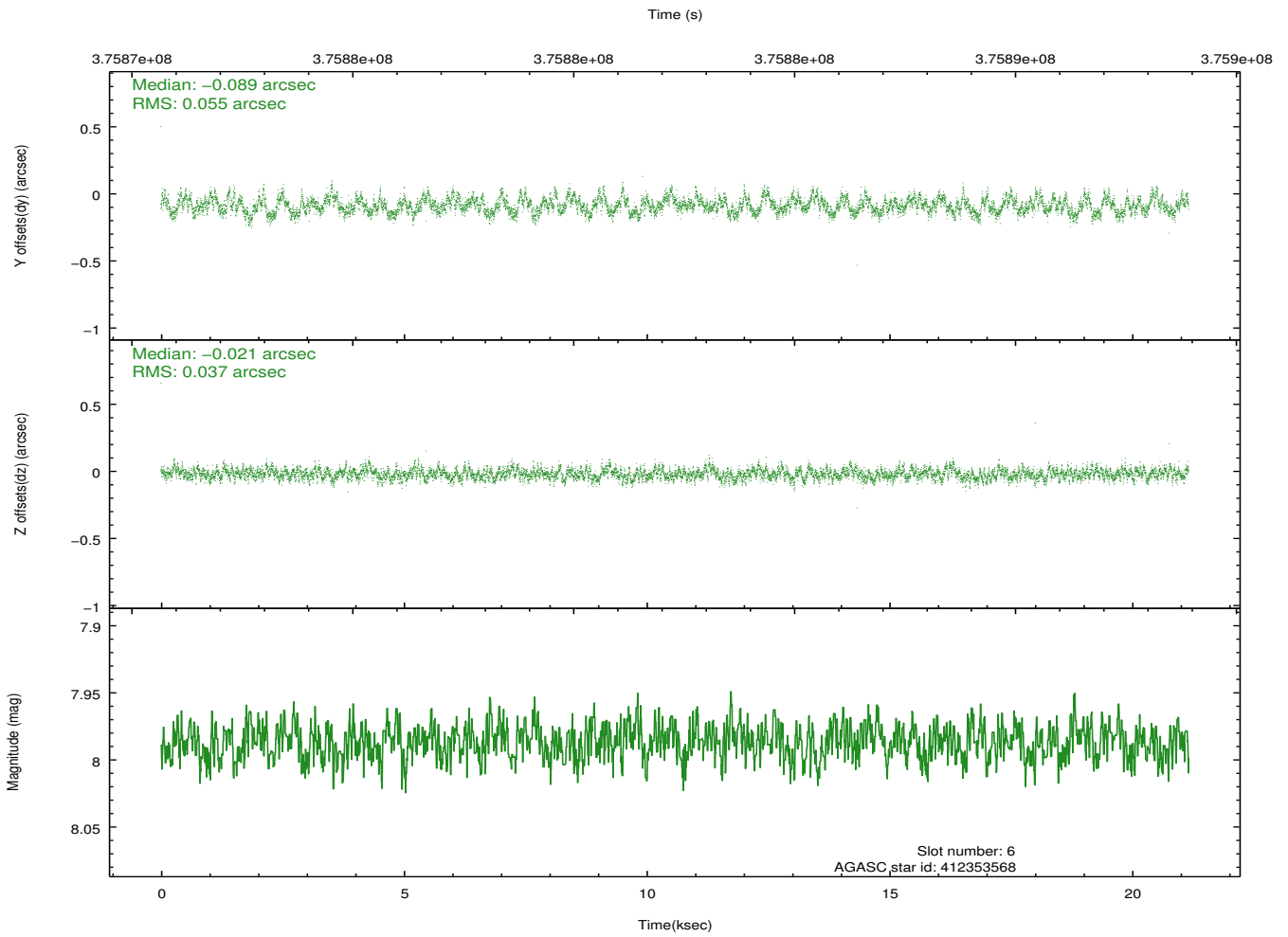
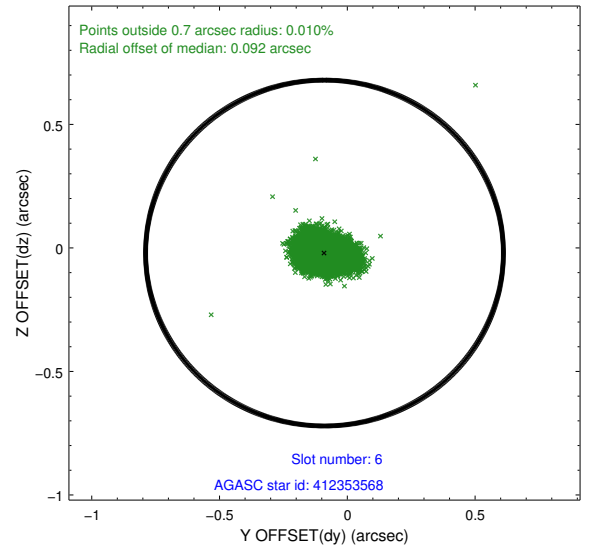
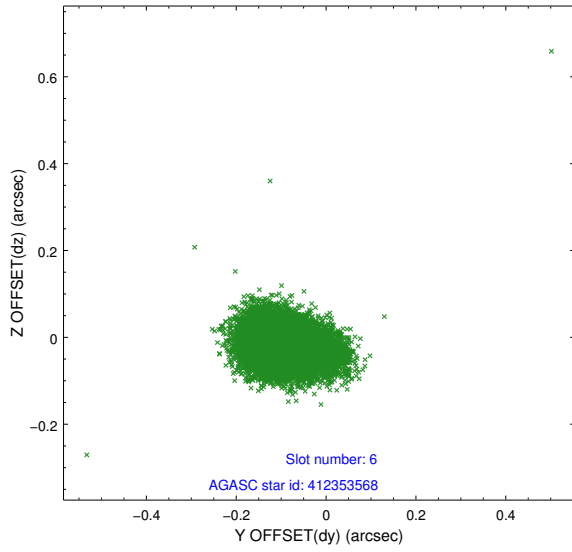
2.4.2 Slot 4



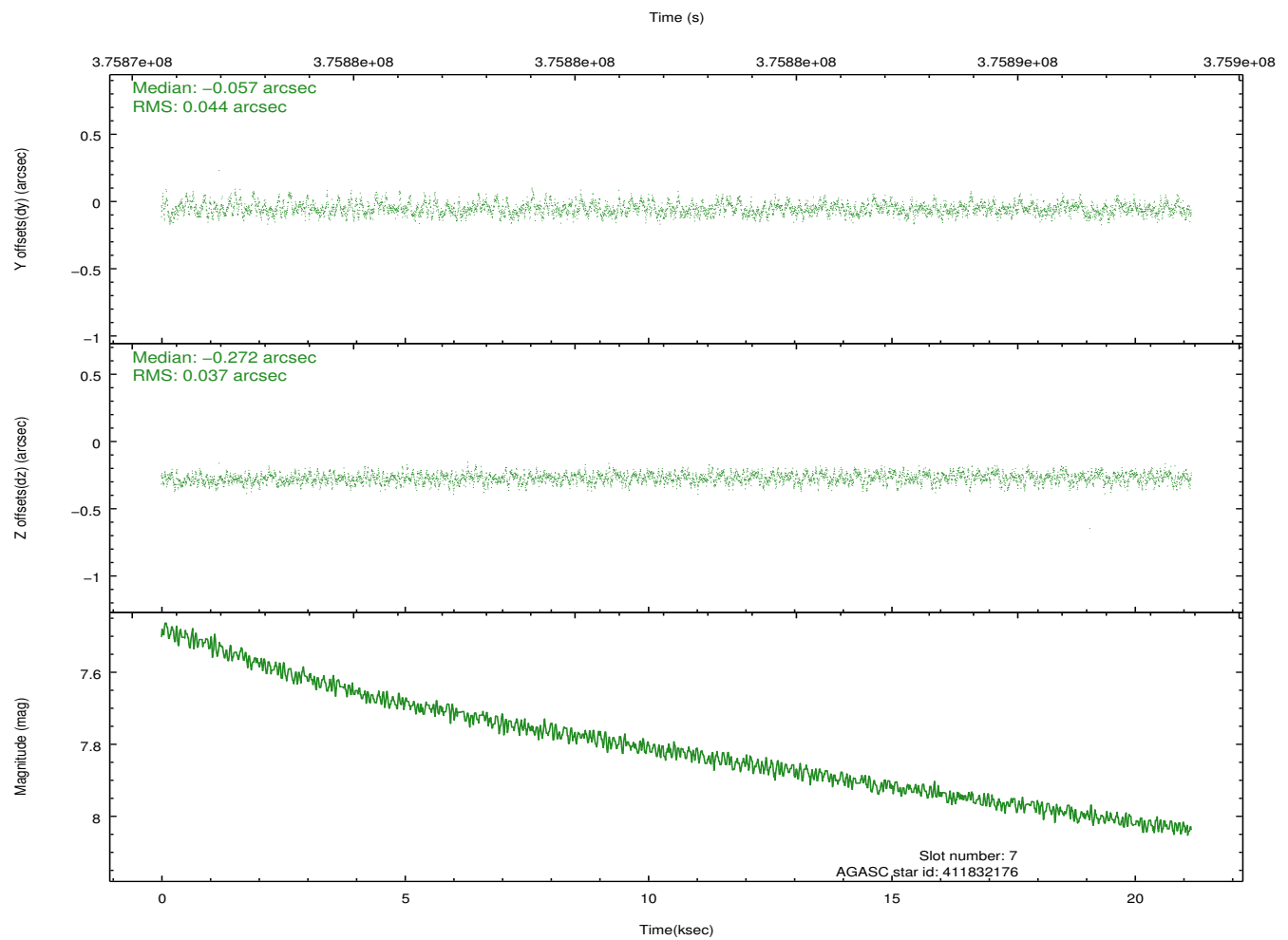
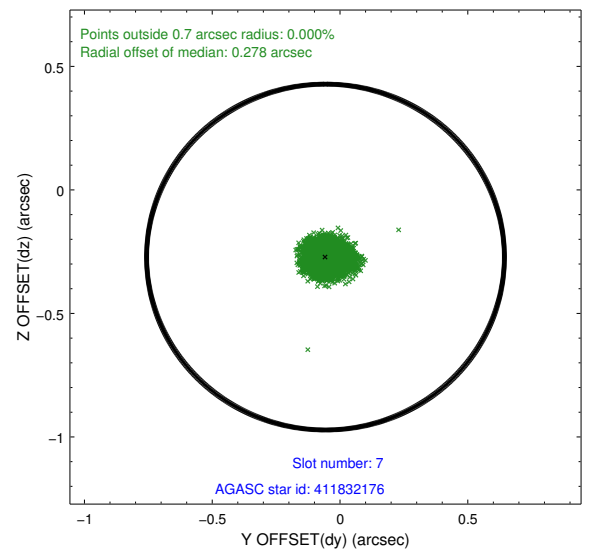
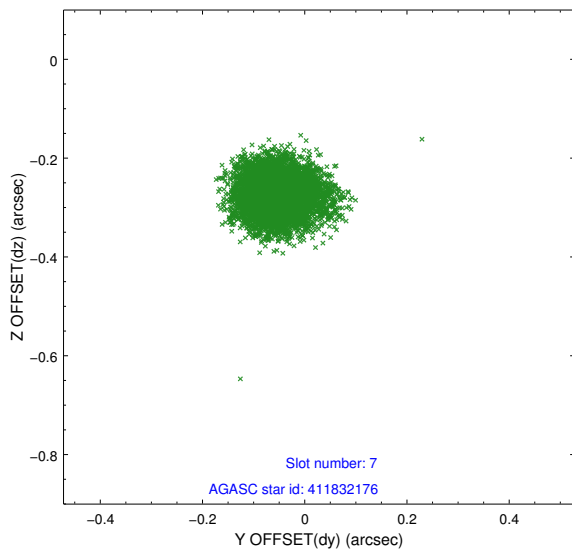
2.4.3 Slot 5



2.4.4 Slot 6

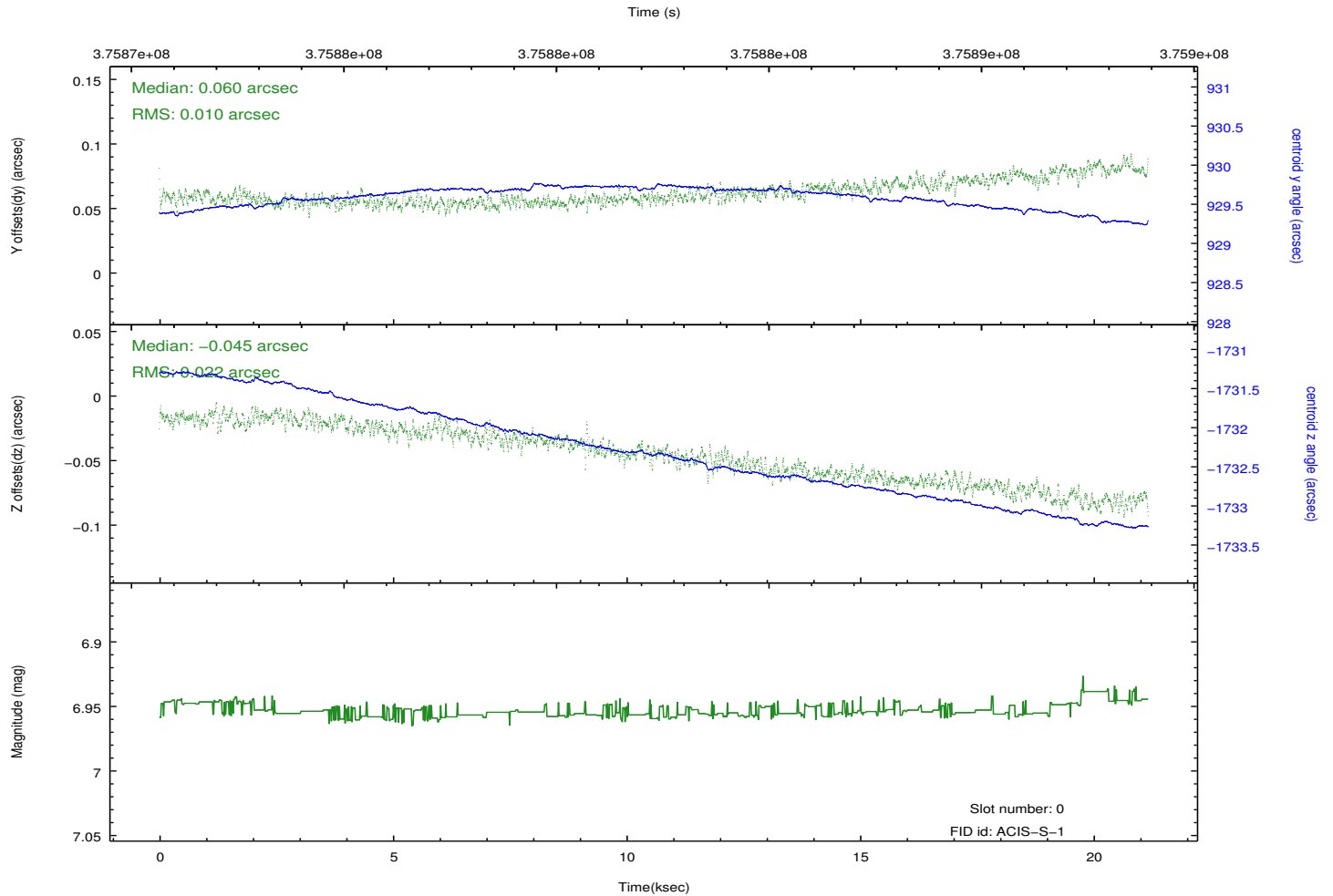
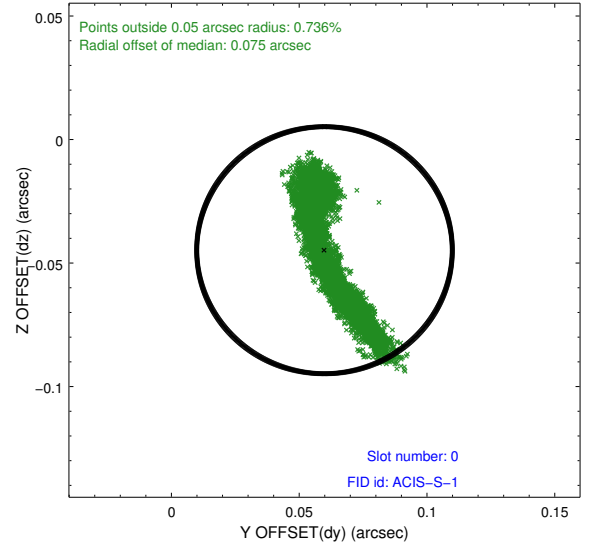
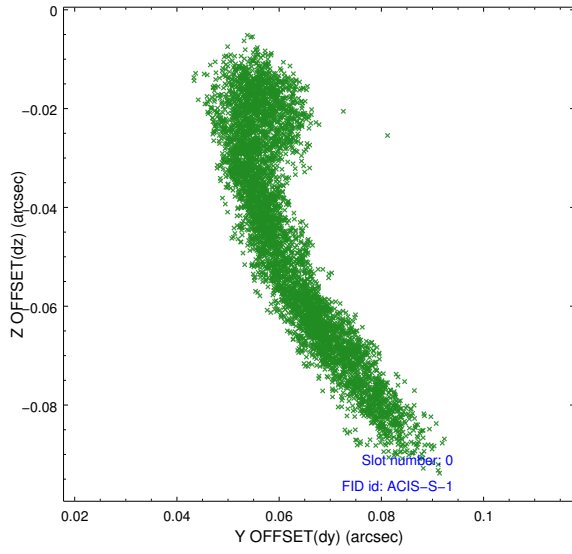


2.4.5 Slot 7

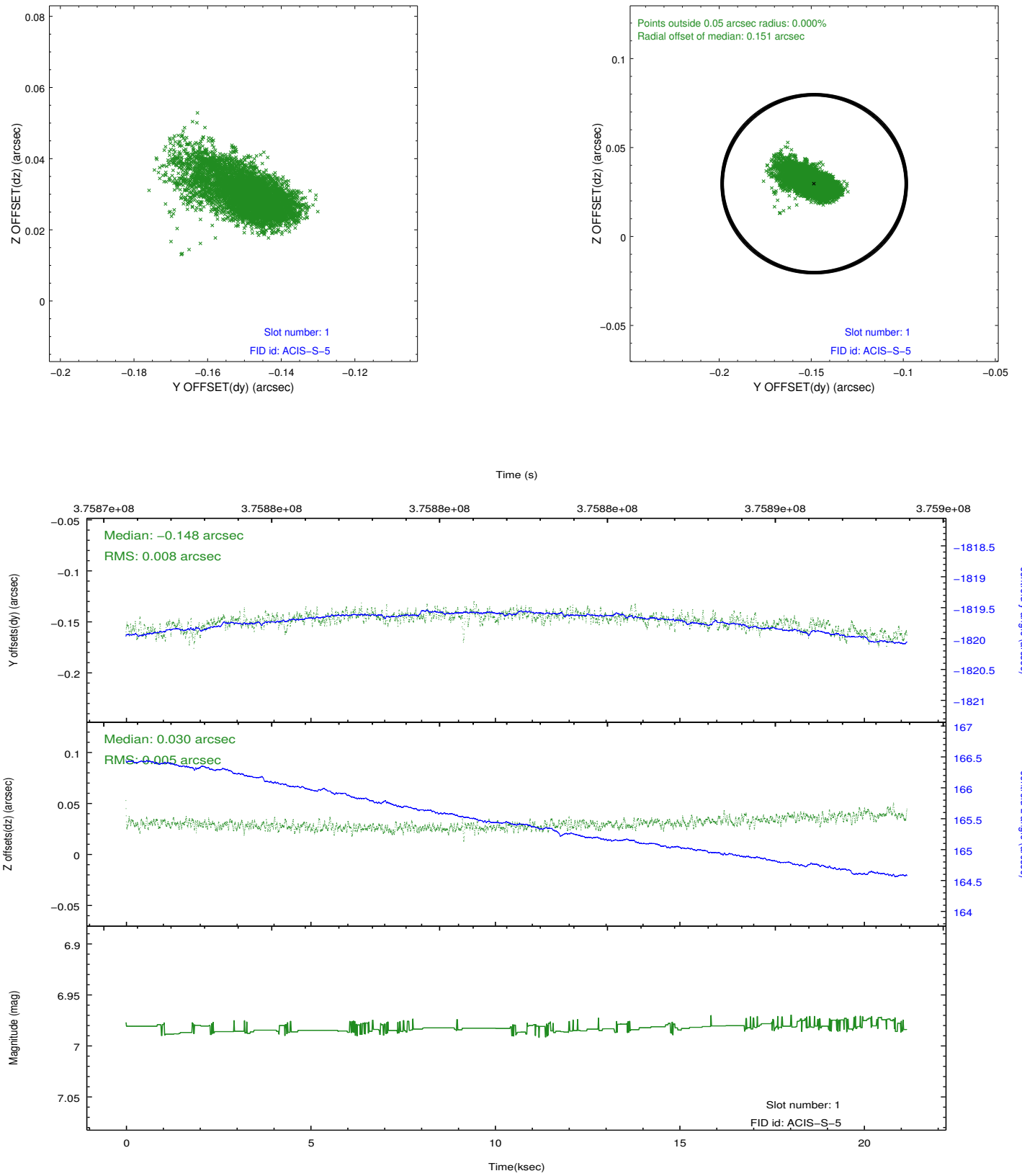


2.5 FID Slots

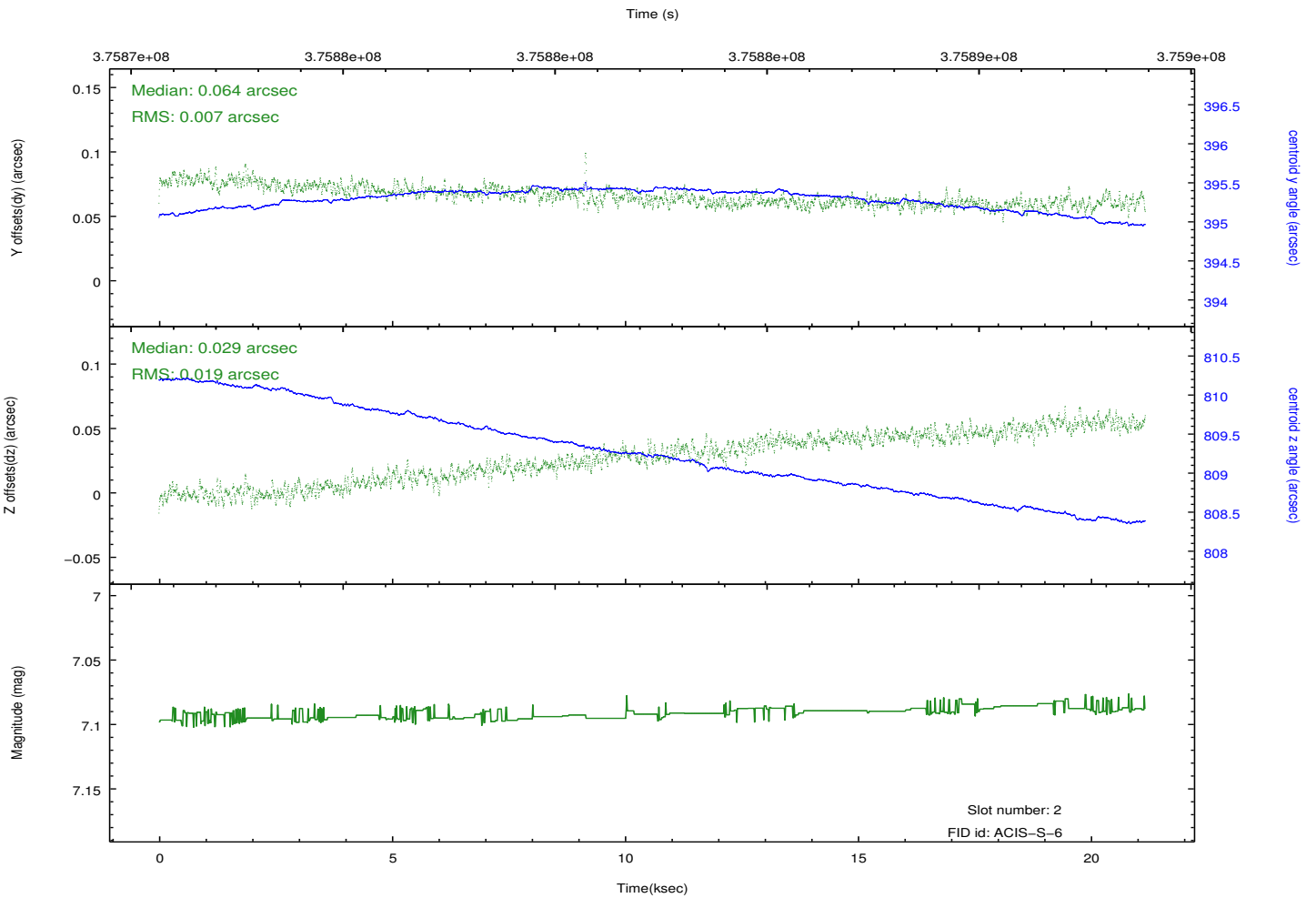
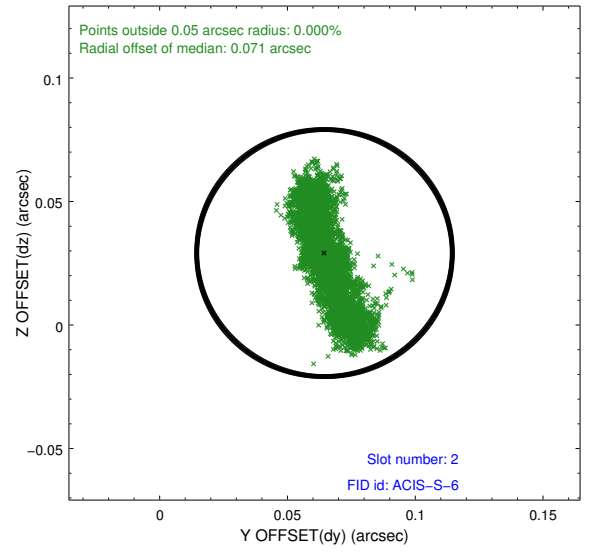
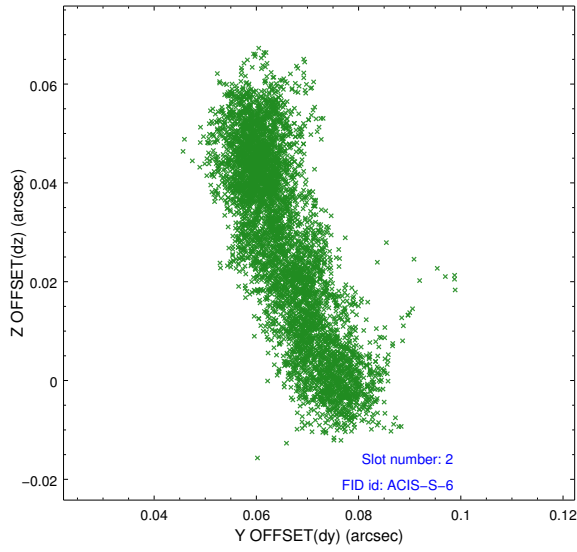
2.5.1 Slot 0



2.5.2 Slot 1



2.5.3 Slot 2



A Summary

A.1 Status

V&V Scientist	Jen Lauer
V&V Date (YYYY-MM-DD)	2012.06.20
V&V Edition	1
V&V Disposition and Status	OK
V&V Charge Time	20.217599924743

A.2 Comments

Optical photometry of target star in guide star slot 7.