

V&V Reference Report

L2 ASCDS Version : 8.4.5

Observation 11274 - L2 Version 2
Chandra X-Ray Center

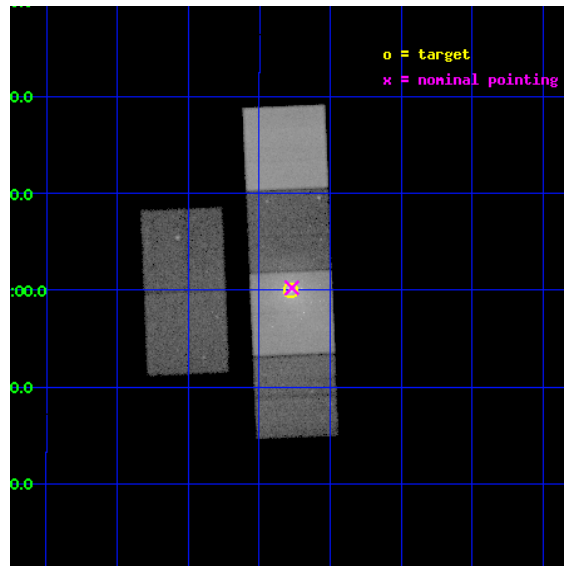
L2 Processing Date : Jun 22 2012

Contents

1	Front	2
2	OBI	3
2.1	OBI	3
2.1.1	Images	3
2.1.2	Bias	3
2.1.3	Parameters	4
2.1.4	Events	4
2.2	Compared Parameters	5
2.3	Aspect	6
2.4	Star Slots	9
2.4.1	Slot 3	9
2.4.2	Slot 4	10
2.4.3	Slot 5	11
2.4.4	Slot 6	12
2.4.5	Slot 7	13
2.5	FID Slots	14
2.5.1	Slot 0	14
2.5.2	Slot 1	15
2.5.3	Slot 2	16
A	Summary	17
A.1	Status	17
A.2	Comments	17

1 Front

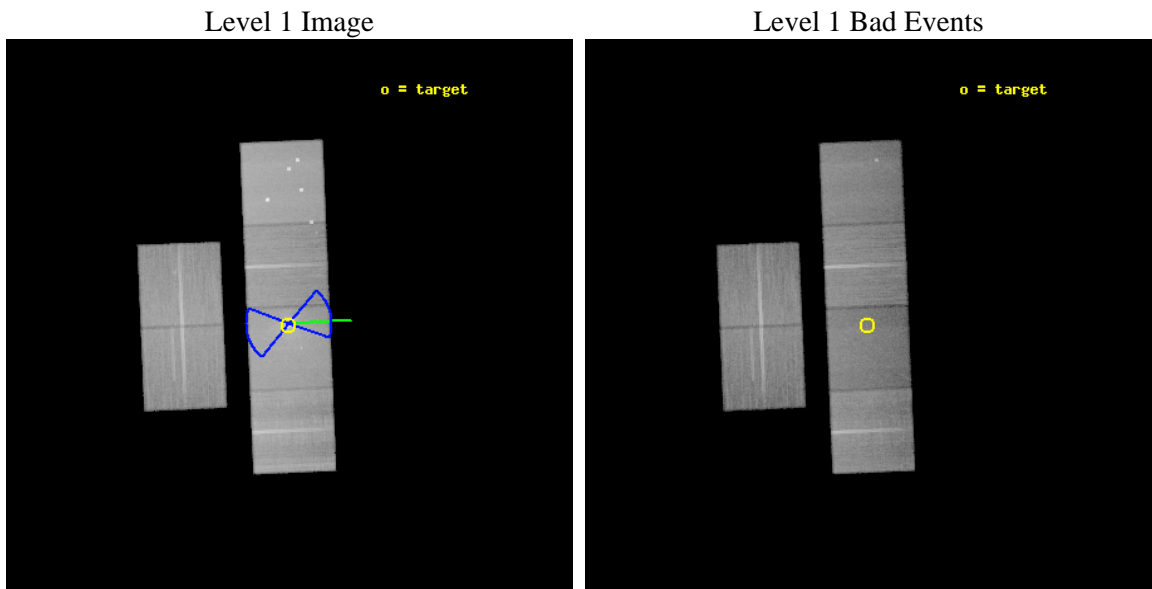
seq_num	600793	Sequence number
obs_id	11274	Observation id
title	A new look at the X-ray binary richest galaxy	Proposal title
observer	Dr Thomas Maccarone	Principal investigator
object	NGC 4472	Source name
dtcycle	0	
cycle	P	events from which exps? Prim/Second/Both
ra_targ	187.445	Observer's specified target RA [deg]
dec_targ	7.999972	Observer's specified target Dec [deg]
ra_nom	187.44260062466	Nominal RA [deg]
dec_nom	8.0041999770706	Nominal Dec [deg]
roll_nom	87.588300910427	Nominal Roll [deg]
revision	2	Processing version of data
ontime	40179.19985038	Sum of GTIs [s]
livetime	39670.426628865	Livetime [s]
ontime2	40179.19985038	Sum of GTIs [s]
ontime3	40172.717789829	Sum of GTIs [s]
ontime5	40179.19985038	Sum of GTIs [s]
ontime6	40179.19985038	Sum of GTIs [s]
ontime7	40179.19985038	Sum of GTIs [s]
ontime8	40175.958809614	Sum of GTIs [s]
l2events	626044	Number of level 2 events



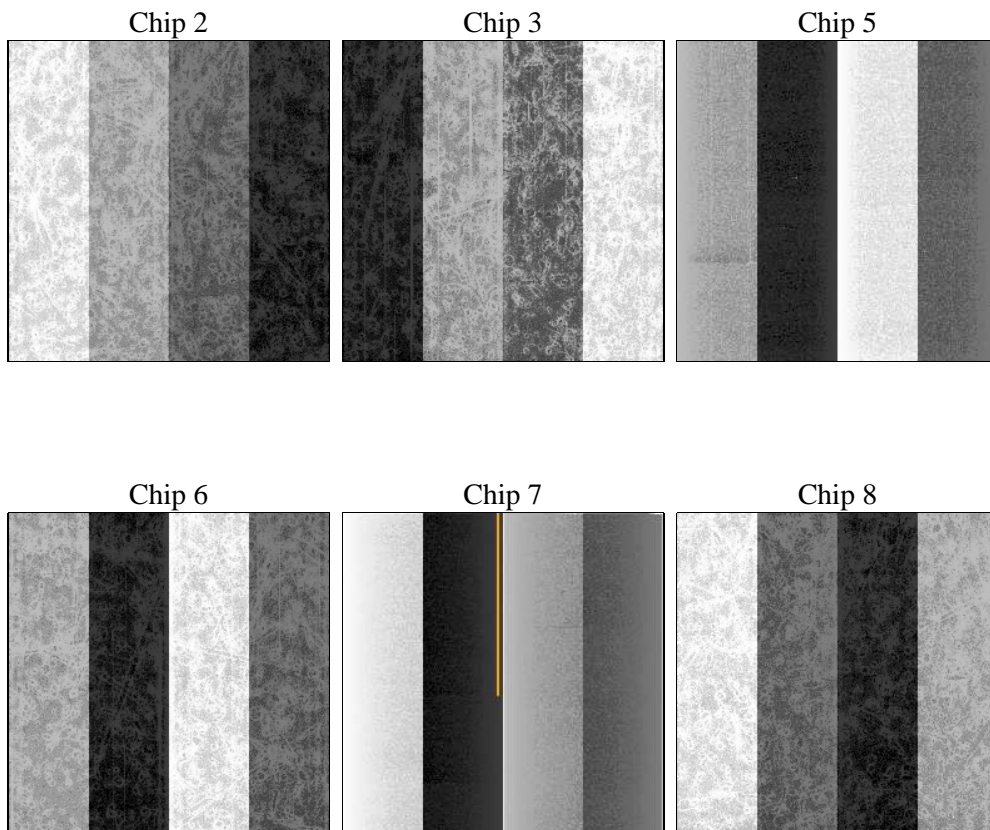
2 OBI

2.1 OBI

2.1.1 Images



2.1.2 Bias



2.1.3 Parameters

obi_num	0	Obi number	sched_exp_time	40000.000000	[s] Scheduled observation exposure time
ascdsver	8.4.5	Processing system revision	ontime	40179.19985038	Sum of GTIs [s]
caldbver	4.4.10	 	ontime2	40179.19985038	Sum of GTIs [s]
date	2012-06-22T03:48:05	Date and time of file creation	ontime3	40172.717789829	Sum of GTIs [s]
revision	2	Processing version of data	ontime5	40179.19985038	Sum of GTIs [s]
			ontime6	40179.19985038	Sum of GTIs [s]
			ontime7	40179.19985038	Sum of GTIs [s]
			ontime8	40175.958809614	Sum of GTIs [s]
			l1events	2510215	Number of level 1 events

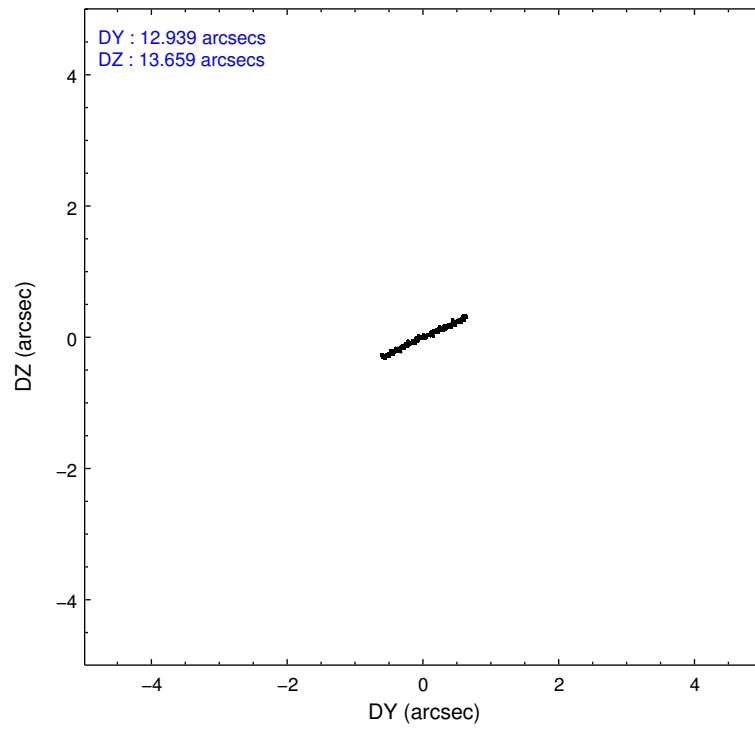
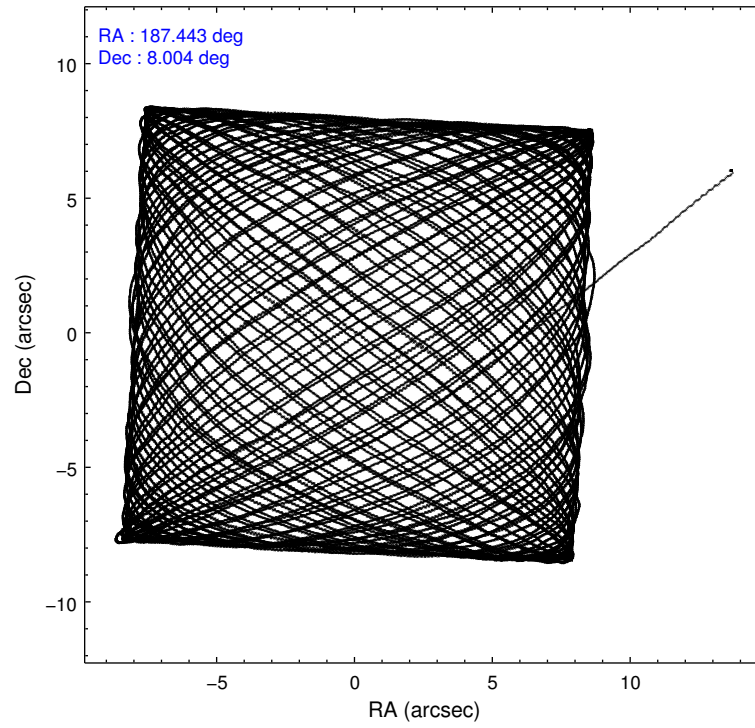
2.1.4 Events

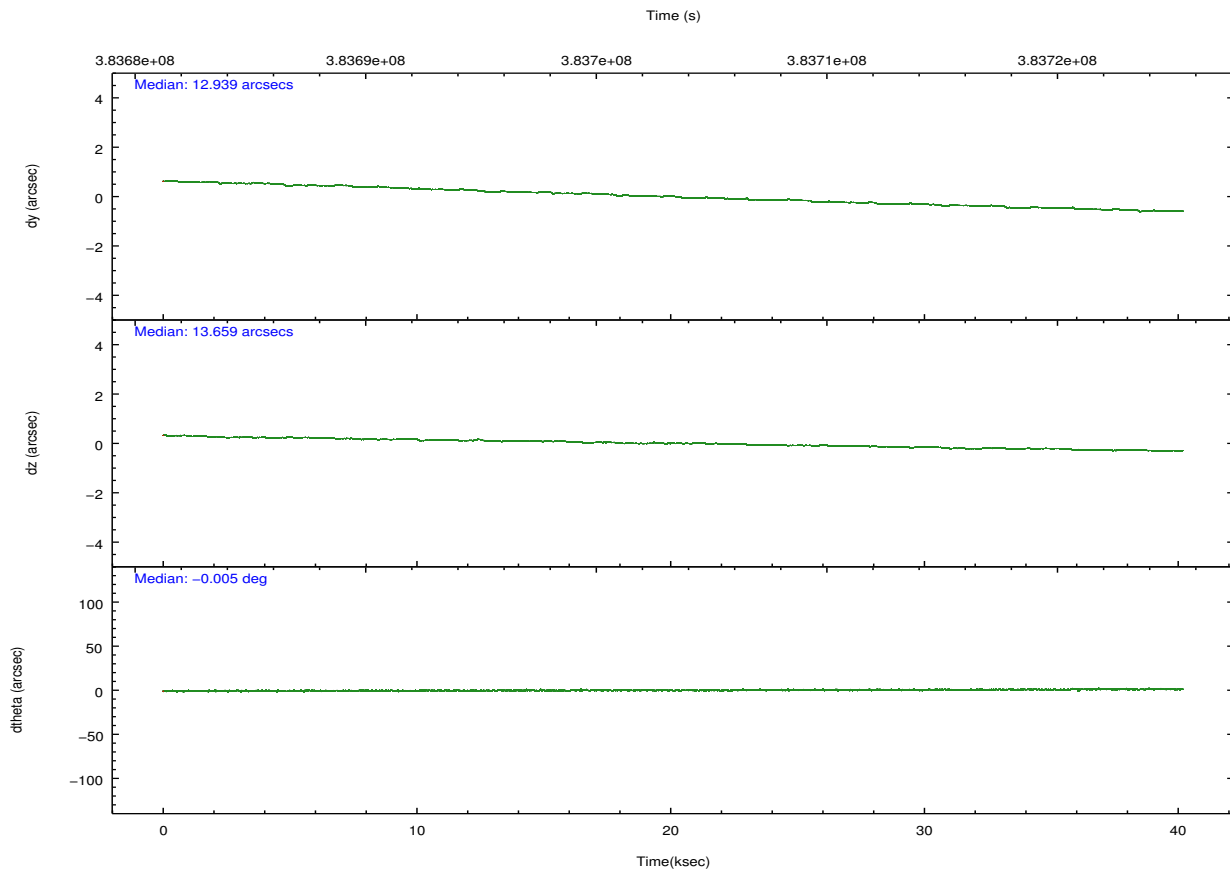
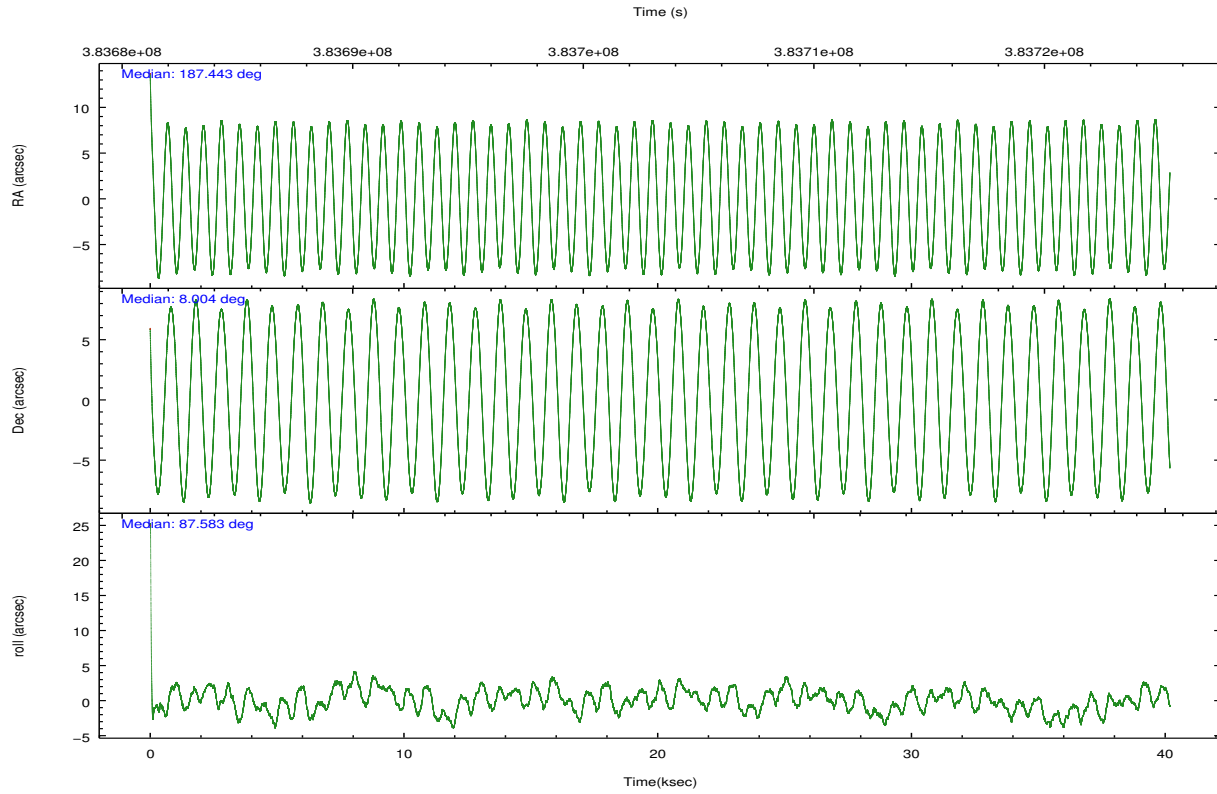
	ccd 2	ccd 3	ccd 5	ccd 6	ccd 7	ccd 8		ccd 2	ccd 3	ccd 5	ccd 6	ccd 7	ccd 8
level 1 events	361755	330287	524893	355632	492129	445519	grade 0 events	14118	13454	41397	18248	44449	37230
rejected events	325159	295838	263028	313417	227009	331727		3%	4%	7%	5%	9%	8%
rejected %	89%	89%	50%	88%	46%	74%	grade 1 events	229	189	1096	202	592	404
								0%	0%	0%	0%	0%	0%
							grade 2 events	8908	7563	77231	8756	61796	26679
								2%	2%	14%	2%	12%	5%
							grade 3 events	3795	3890	9739	3954	26686	12309
								1%	1%	1%	1%	5%	2%
							grade 4 events	3877	3692	9106	3924	26219	11400
								1%	1%	1%	1%	5%	2%
							grade 5 events	12999	14605	38518	14810	42754	21309
								3%	4%	7%	4%	8%	4%
							grade 6 events	6873	6791	131625	8418	111360	29322
								1%	2%	25%	2%	22%	6%
							grade 7 events	310956	280103	216181	297320	178273	306866
								85%	84%	41%	83%	36%	68%

2.2 Compared Parameters

Parameter	Planned	Actual	Parameter	Planned	Actual
Instrument	ACIS	ACIS	Obspar format version number	7	7
Detector	ACIS-235678	ACIS-235678	Obspar file type	PREDICTED	ACTUAL
Grating	NONE	NONE	Obspar update status	NONE	UPDATED
Data mode	FAINT	FAINT	CCD I0 on	N	N
Observation mode	POINTING	POINTING	CCD I1 on	N	N
[deg] Pointing RA	187.455724	187.4426006246588	CCD I2 on	O2	Y
[deg] Pointing Dec	7.980142	8.004199977070627	CCD I3 on	O1	Y
[deg] Pointing Roll	87.429842	87.58830091042657	CCD S0 on	N	N
[deg] Roll angle	75.000000	75.000000	CCD S1 on	O3	Y
[deg] Roll tolerance	35.000000	35.000000	CCD S2 on	Y	Y
Roll constraint allows 180D rotation	Y	Y	CCD S3 on	Y	Y
[mm] SIM focus pos	-0.684267	-0.6828225247311905	CCD S4 on	Y	Y
[mm] SIM defocus	0	0.001444936568705701	CCD S5 on	N	N
[mm] SIM translation stage pos	-190.132523	-190.1400660498719	Number of optional ACIS chips dropped	0	0
[mm] SIM translation stage offset	0	0.00754346686406393	On-chip summing requested	N	N
[s] Observation start time (MET)	383683418.184000	383681776.85193	Subarray requested	NONE	NONE
Observation start date	2010-02-27T18:42:32	2010-02-27T18:16:16	Alternating exposures requested	N	N
[s] Observation end time (MET)	383723418.184000	383723884.87906	[s] Primary exposure time	0.000000	3.2
Observation end date	2010-02-28T05:49:12	2010-02-28T05:58:04			
Read mode	TIMED	TIMED			

2.3 Aspect



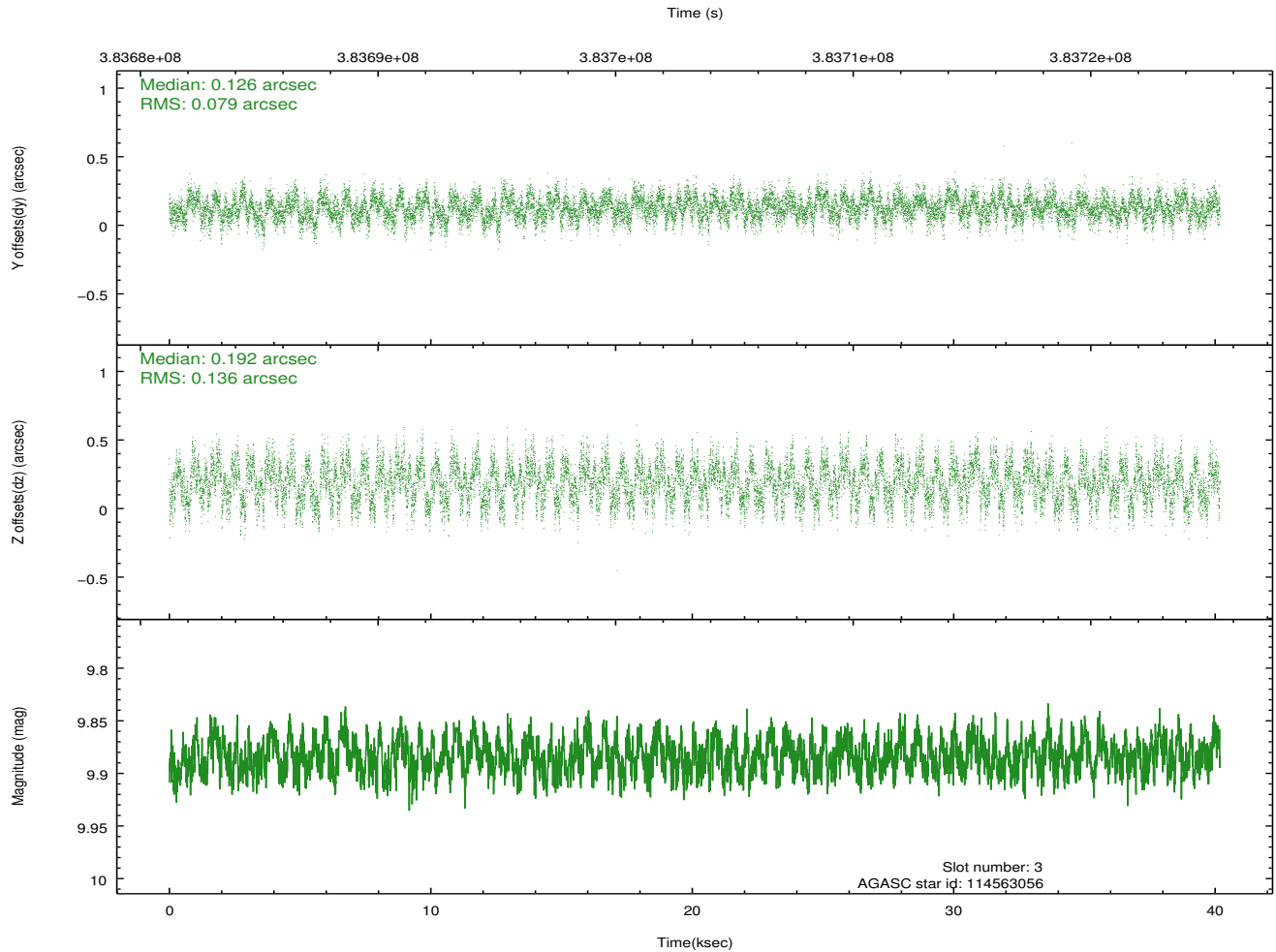
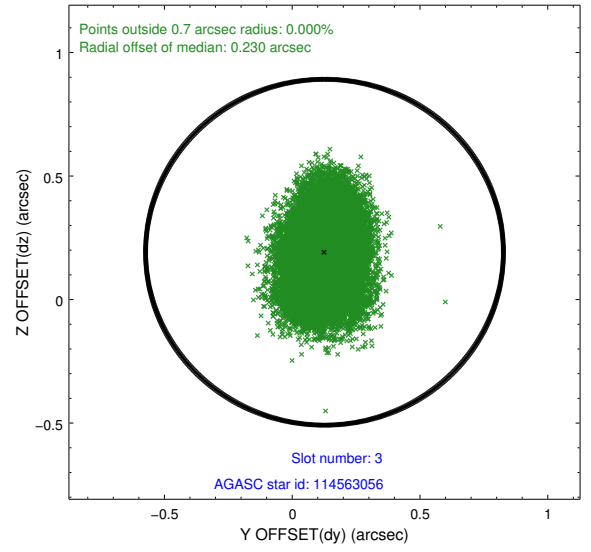
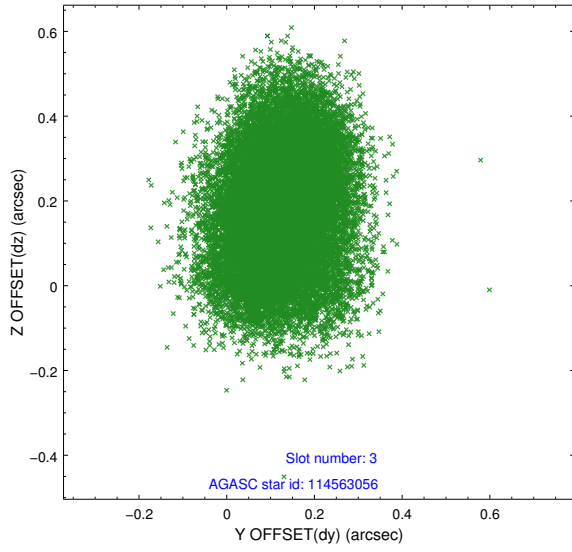


Slot Statistics

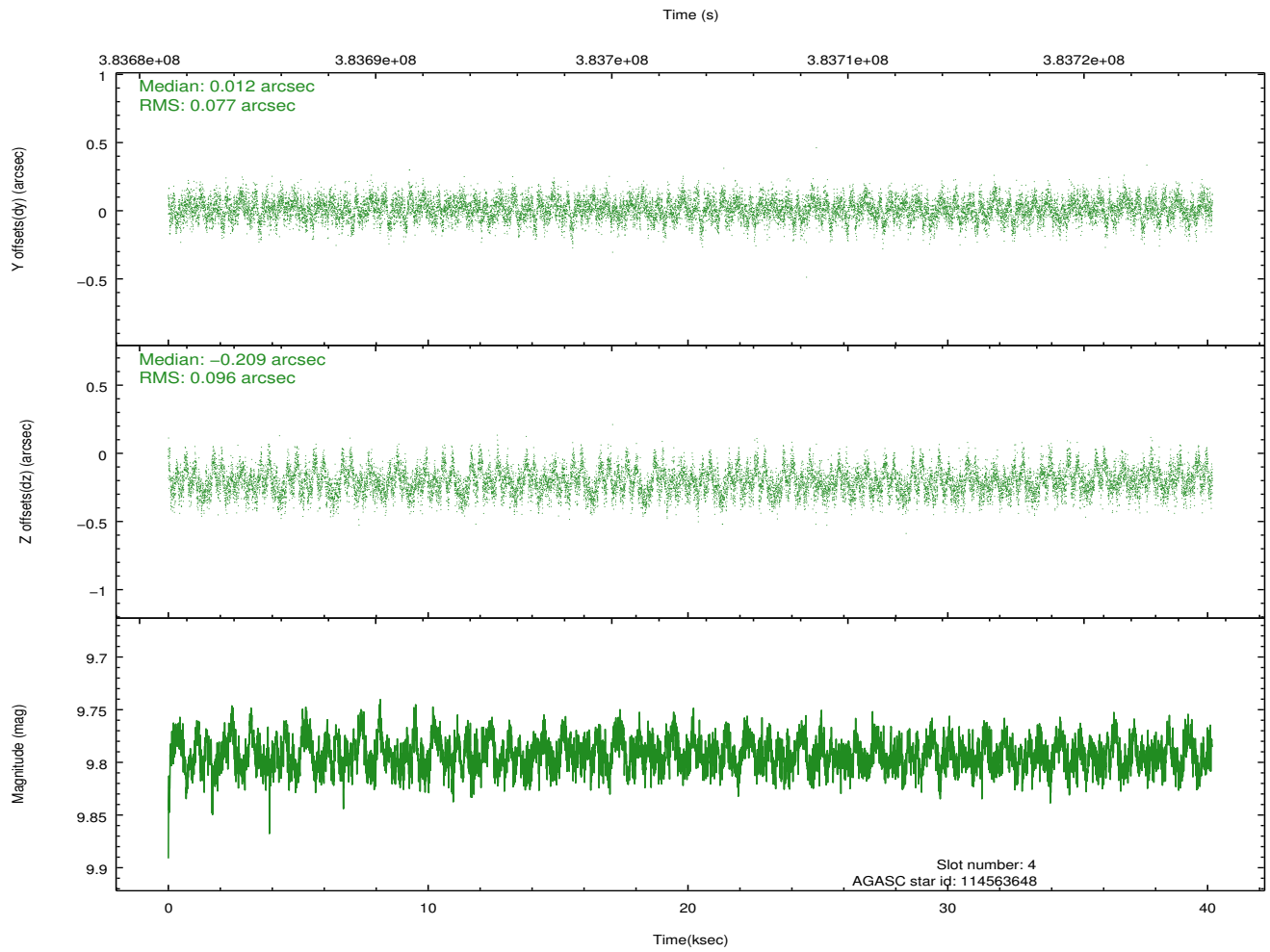
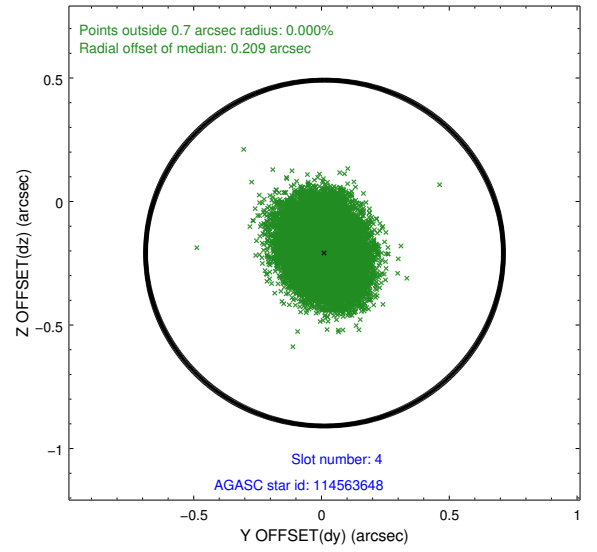
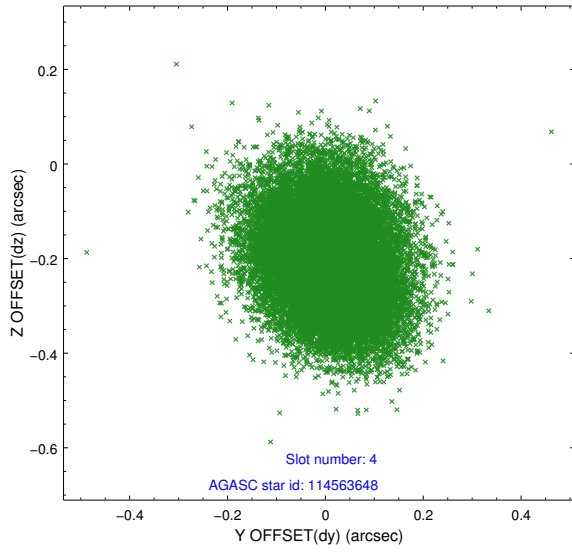
slot	status	id	mag	n_pts	med_dy	med_dz	dr1	dr2	ra	dec	mean_y	mean_z
0	FID	ACIS-S-1	7.02	9803	0.063	-0.017	0.009	0.019	0.000000	0.000000	930.23	-1730.65
1	FID	ACIS-S-4	7.02	9799	0.100	-0.014	0.025	0.045	0.000000	0.000000	2147.70	173.49
2	FID	ACIS-S-5	7.05	9802	-0.190	0.043	0.023	0.039	0.000000	0.000000	-1818.87	167.17
3	GUIDE	114563056	9.88	19565	0.126	0.192	0.169	0.271	188.043188	7.639178	-1130.61	-2148.48
4	GUIDE	114563648	9.79	19578	0.012	-0.209	0.133	0.213	187.009208	7.938475	-220.15	1583.66
5	GUIDE	114565064	9.99	19575	0.159	0.182	0.226	0.351	187.898151	7.788605	-616.92	-1606.91
6	GUIDE	114565400	6.32	19605	-0.326	-0.294	0.089	0.131	186.925333	8.610343	2182.74	1987.64
7	GUIDE	38672824	10.30	19549	0.047	0.144	0.176	0.300	187.947451	7.308408	-2335.37	-1862.17

2.4 Star Slots

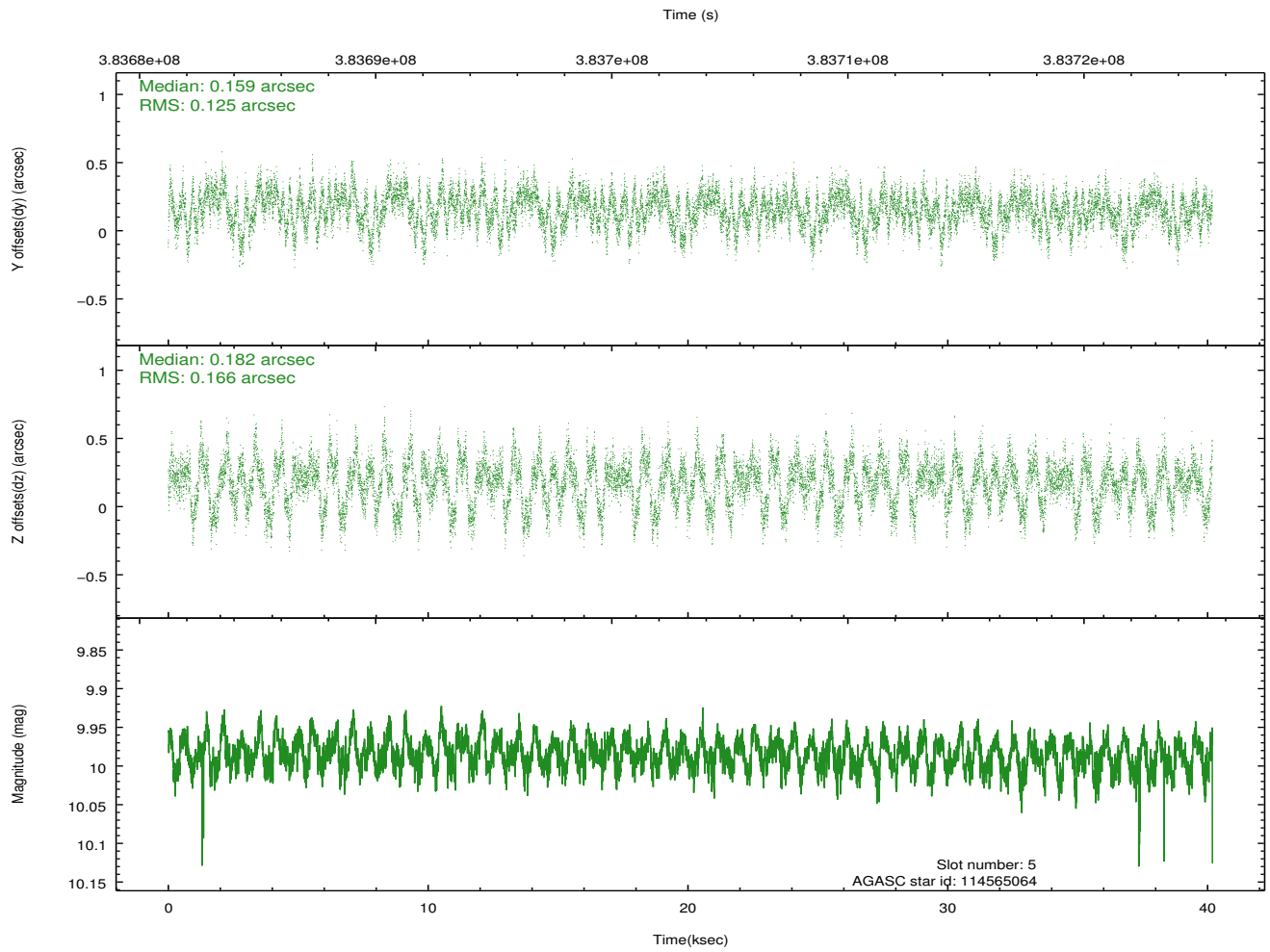
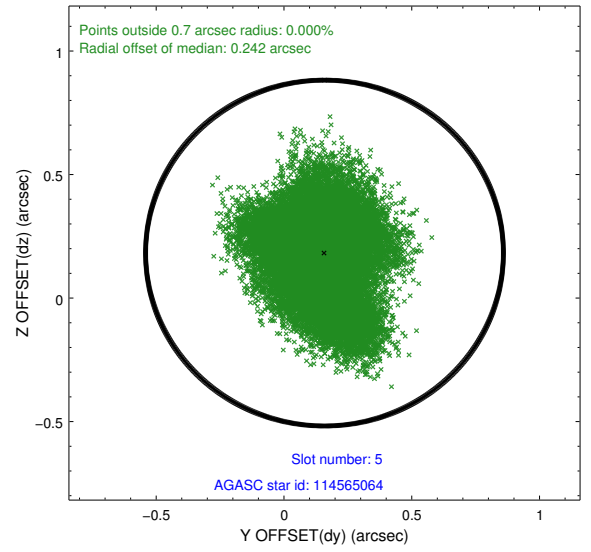
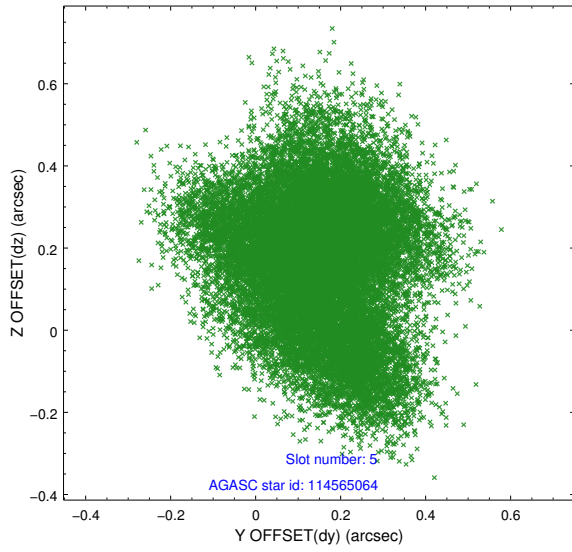
2.4.1 Slot 3



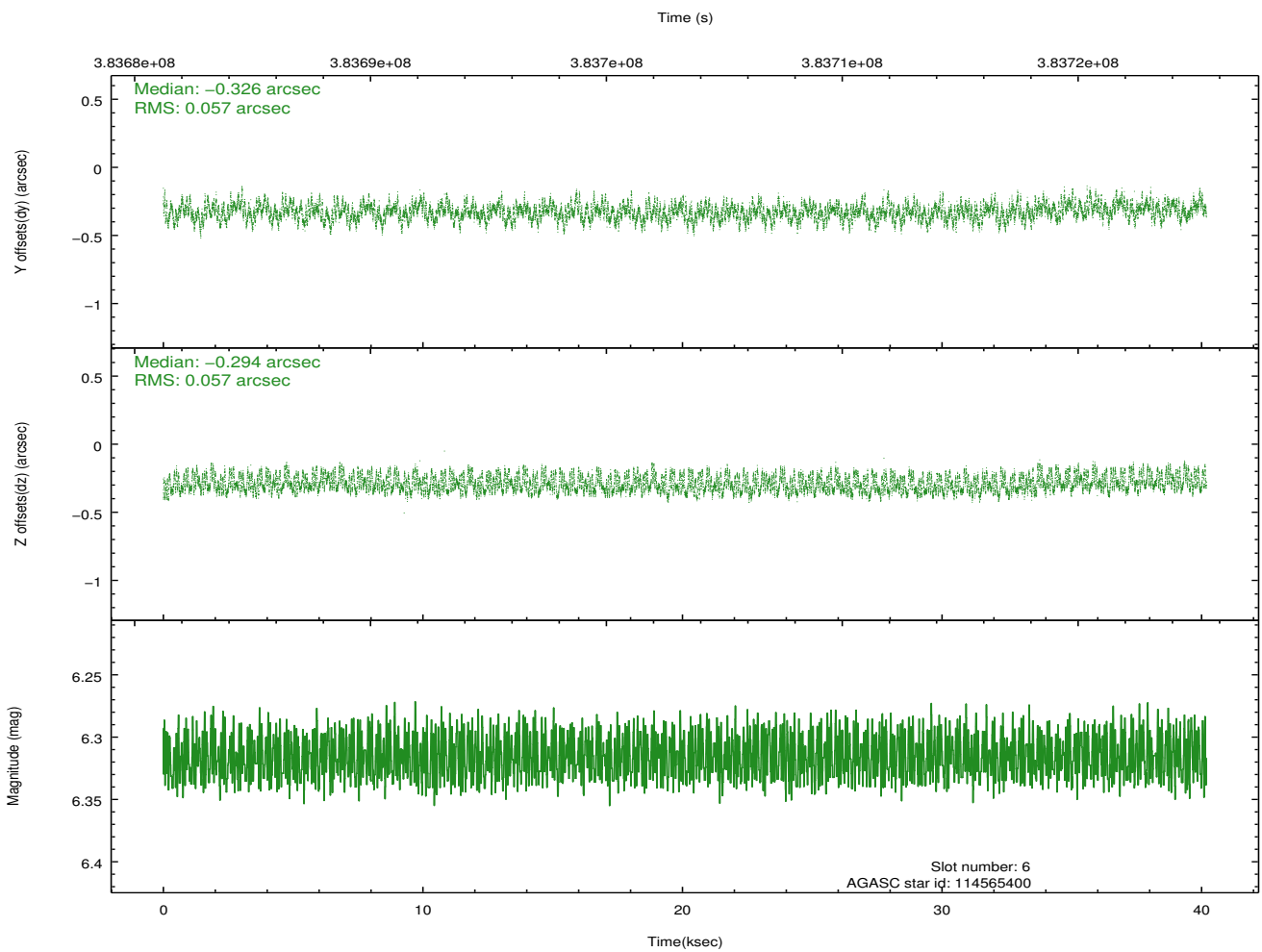
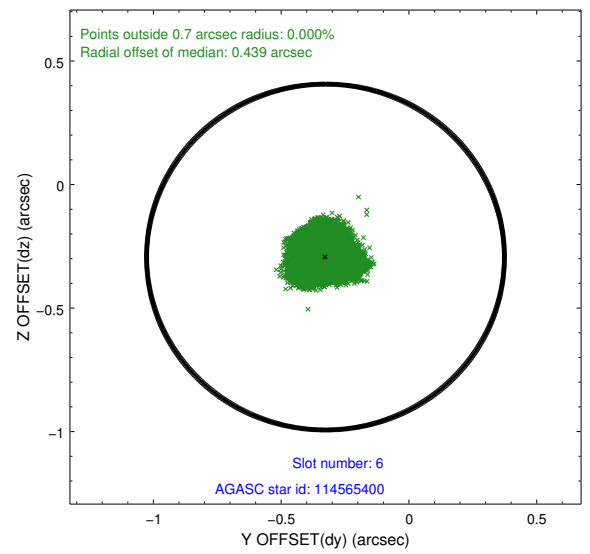
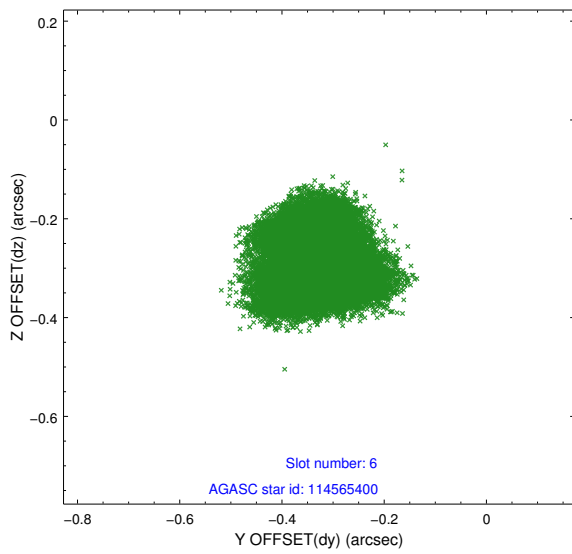
2.4.2 Slot 4



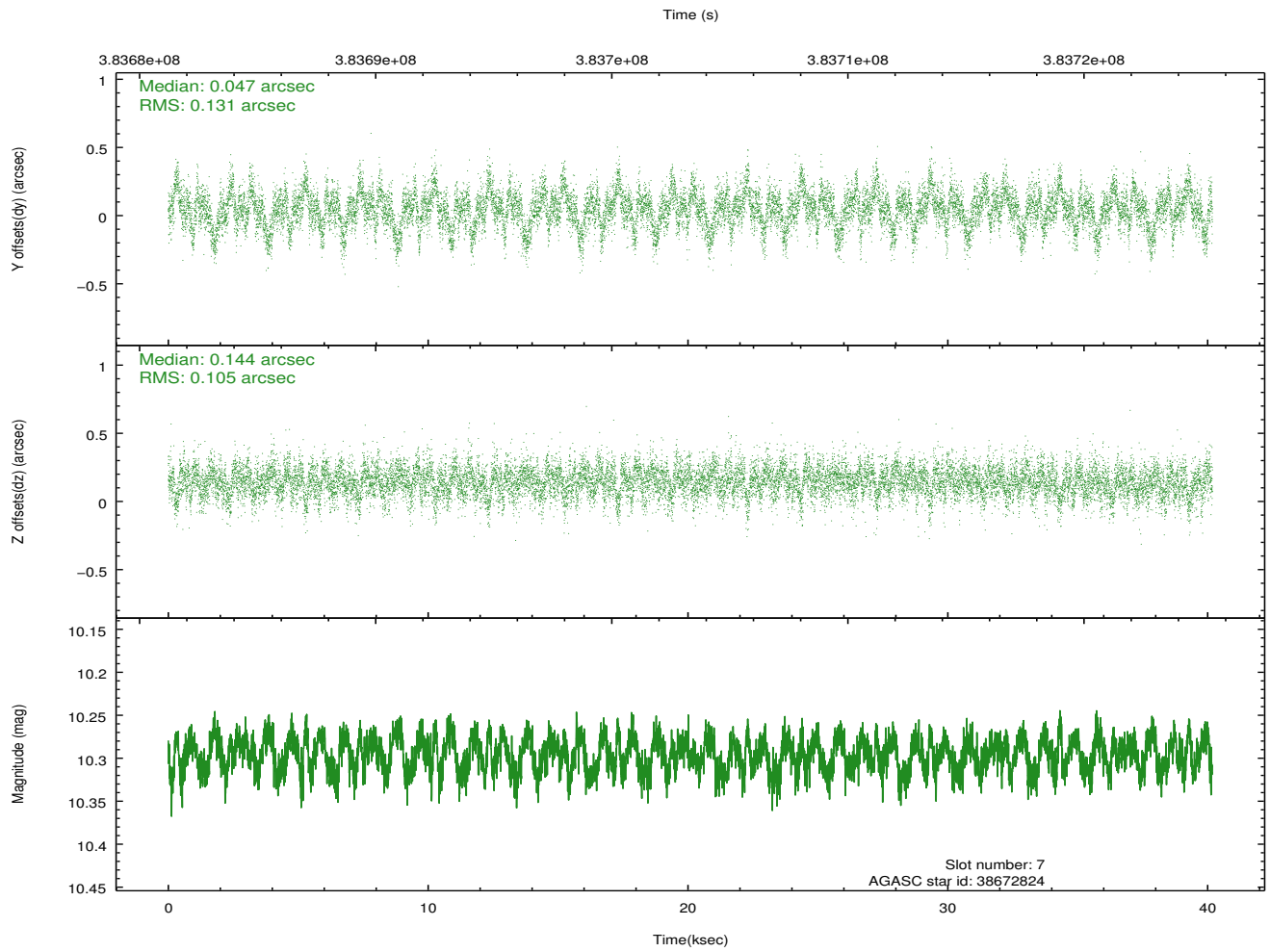
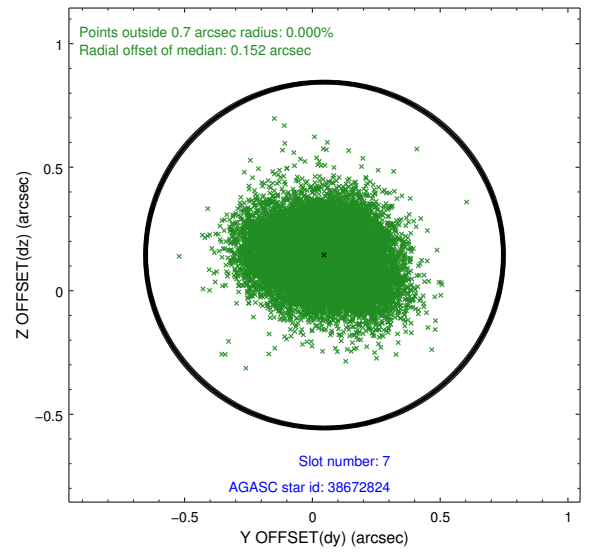
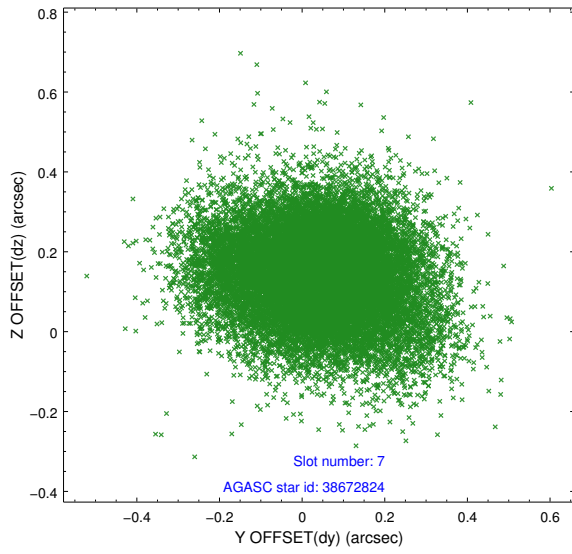
2.4.3 Slot 5



2.4.4 Slot 6

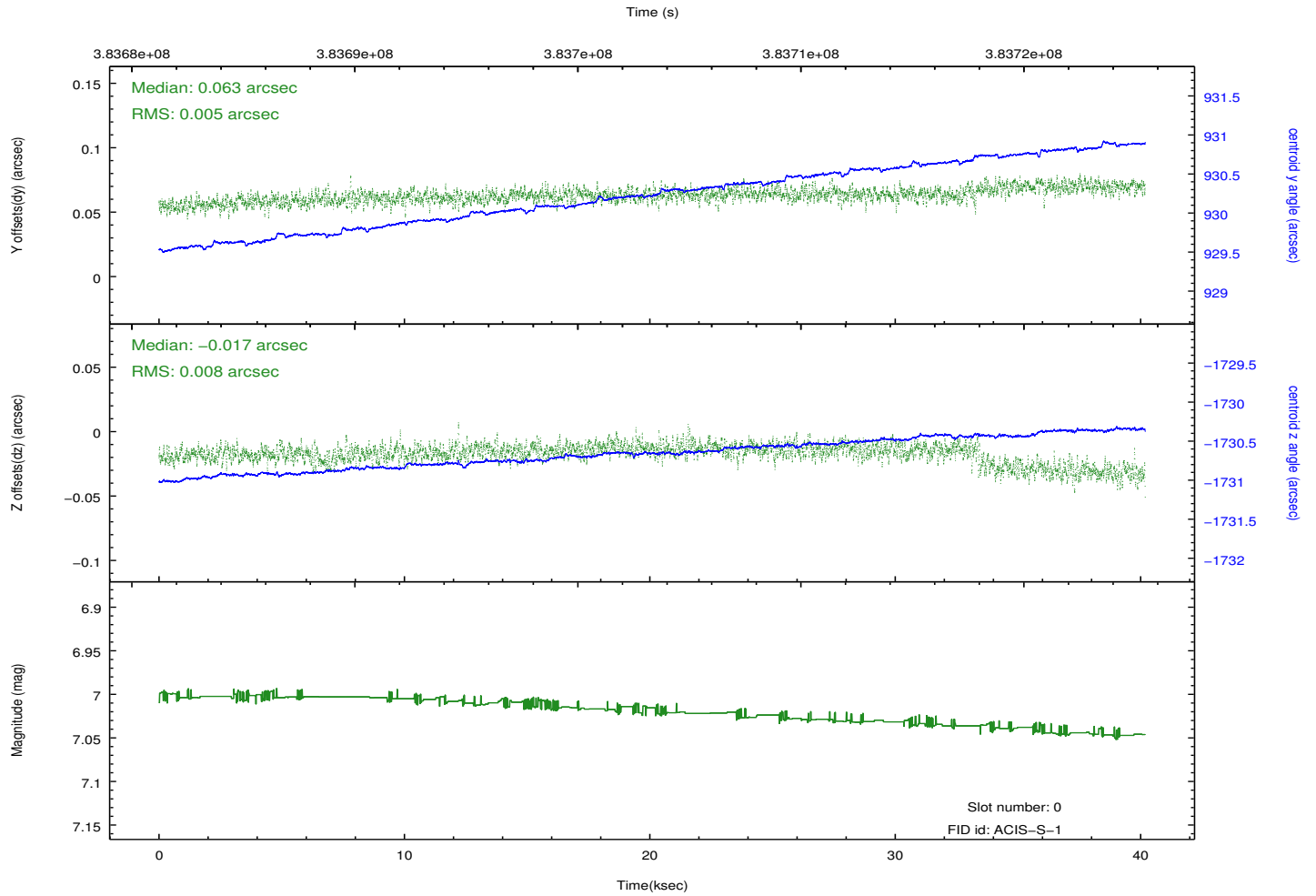
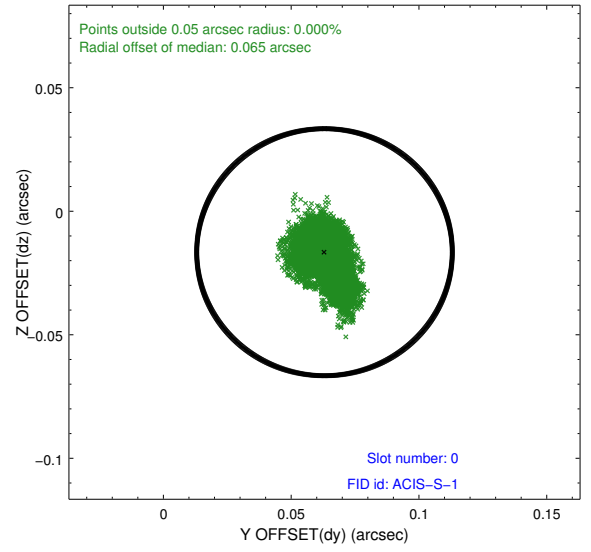
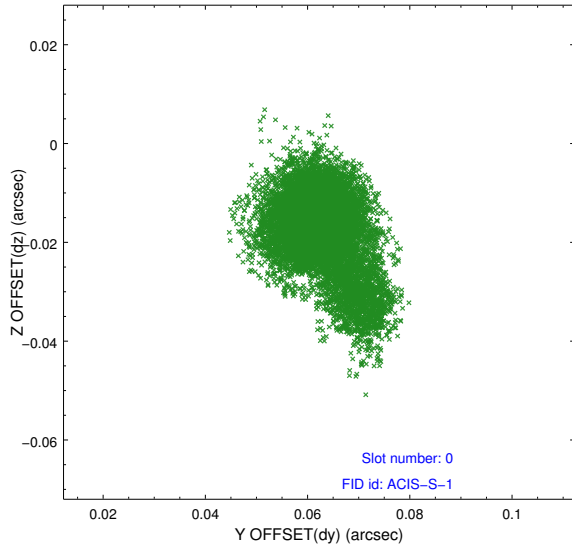


2.4.5 Slot 7

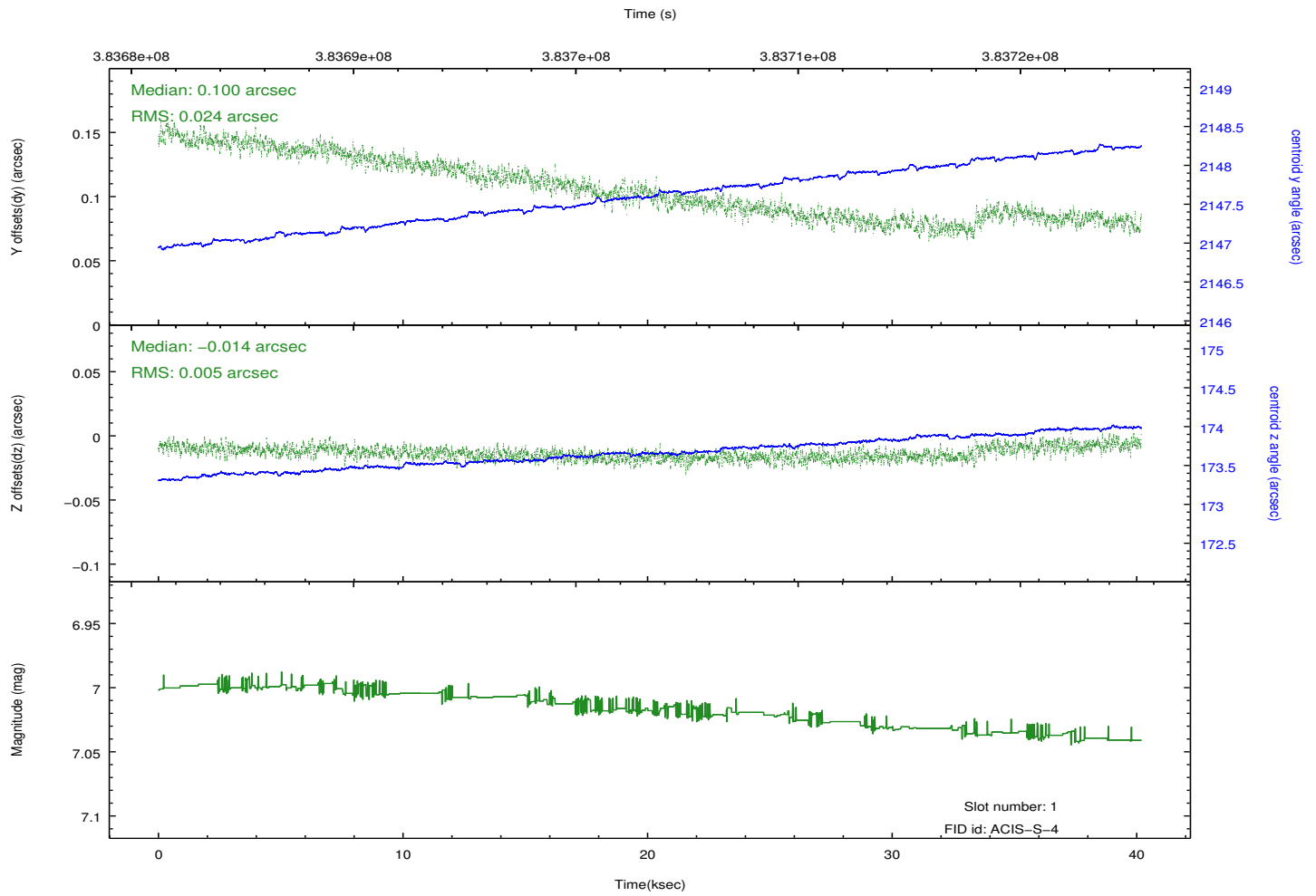
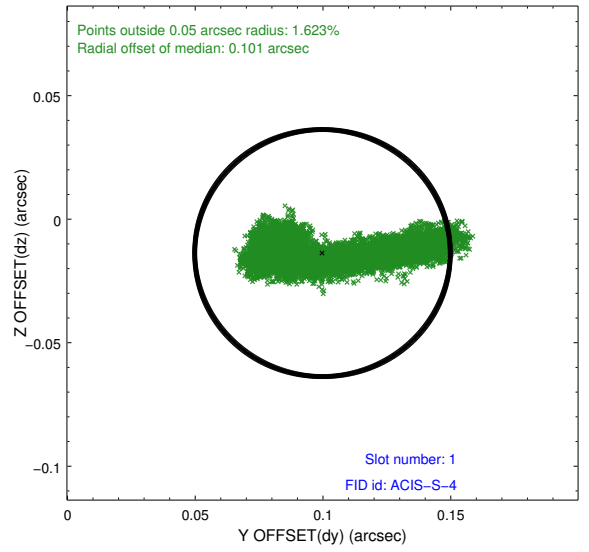
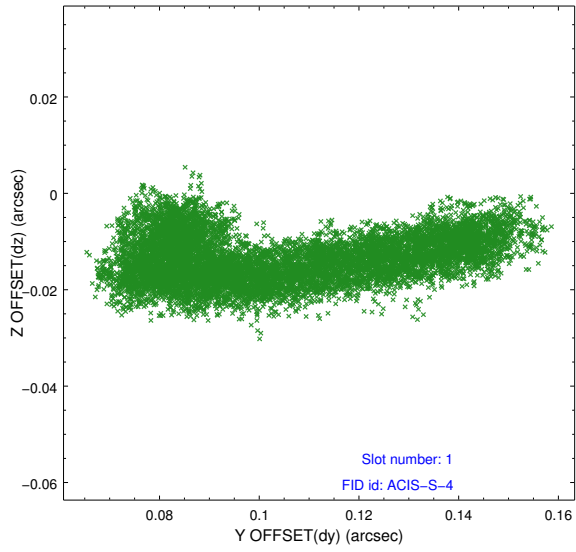


2.5 FID Slots

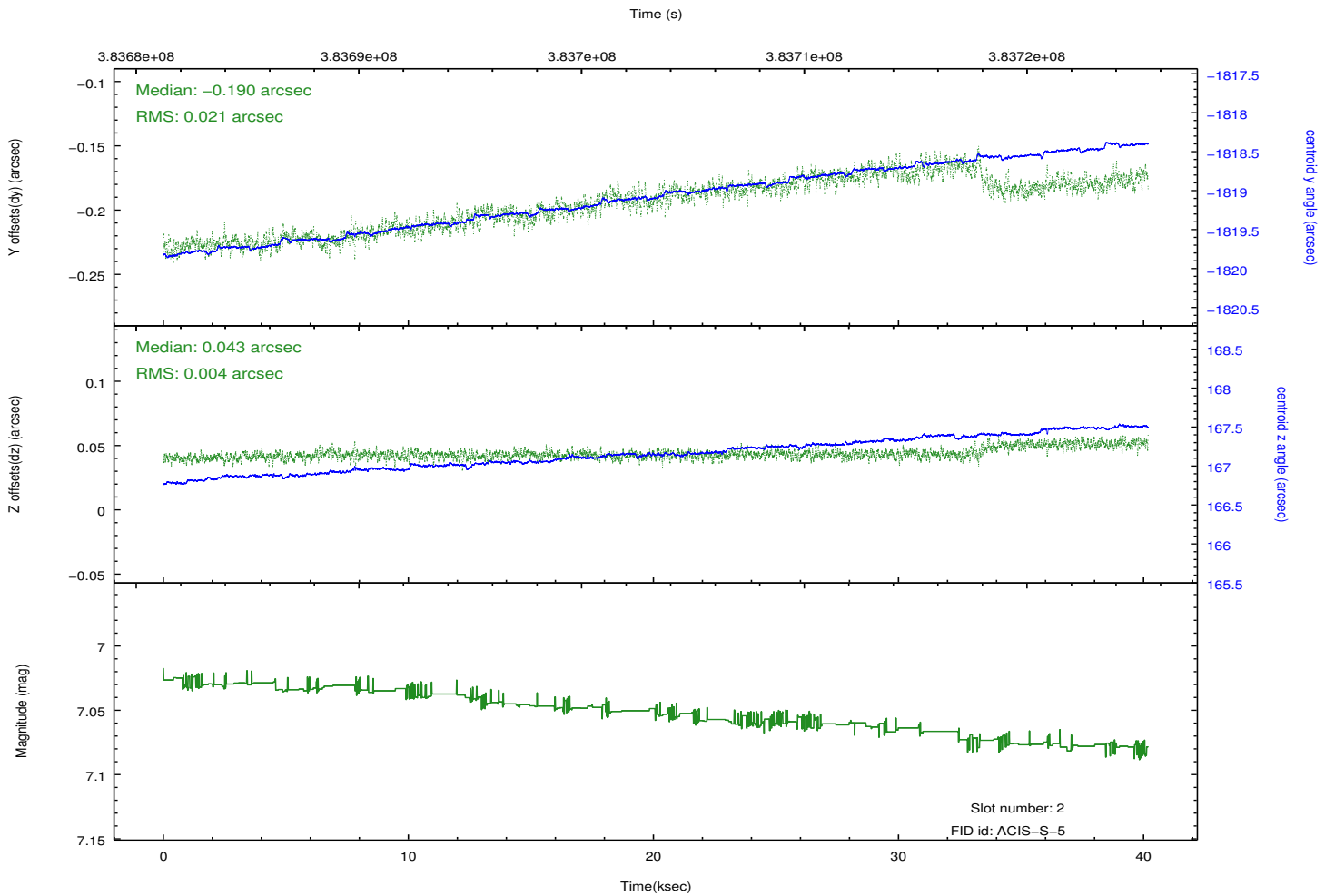
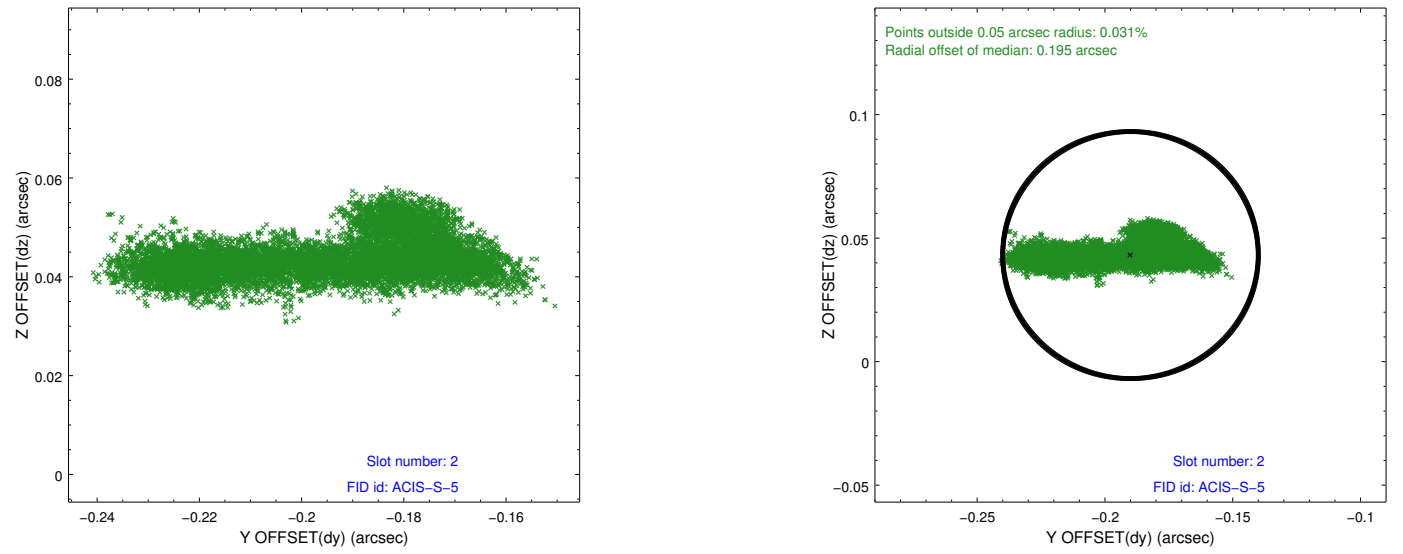
2.5.1 Slot 0



2.5.2 Slot 1



2.5.3 Slot 2



A Summary

A.1 Status

V&V Scientist	Beth Sundheim
V&V Date (YYYY-MM-DD)	2012.06.28
V&V Edition	1
V&V Disposition and Status	OK
V&V Charge Time	40.17919985038

A.2 Comments

Roll preference met.