

V&V Reference Report

L2 ASCDS Version : 8.4.5

Observation 11784 - L2 Version 2
Chandra X-Ray Center

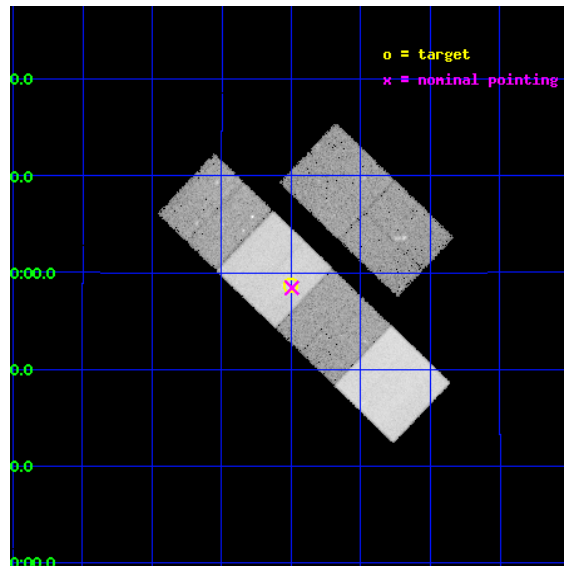
L2 Processing Date : Jun 24 2012

Contents

1	Front	2
2	OBI	3
2.1	OBI	3
2.1.1	Images	3
2.1.2	Bias	3
2.1.3	Parameters	4
2.1.4	Events	4
2.2	Compared Parameters	5
2.3	Aspect	6
2.4	Star Slots	9
2.4.1	Slot 3	9
2.4.2	Slot 4	10
2.4.3	Slot 5	11
2.4.4	Slot 6	12
2.4.5	Slot 7	13
2.5	FID Slots	14
2.5.1	Slot 0	14
2.5.2	Slot 1	15
2.5.3	Slot 2	16
A	Summary	17
A.1	Status	17
A.2	Comments	17

1 Front

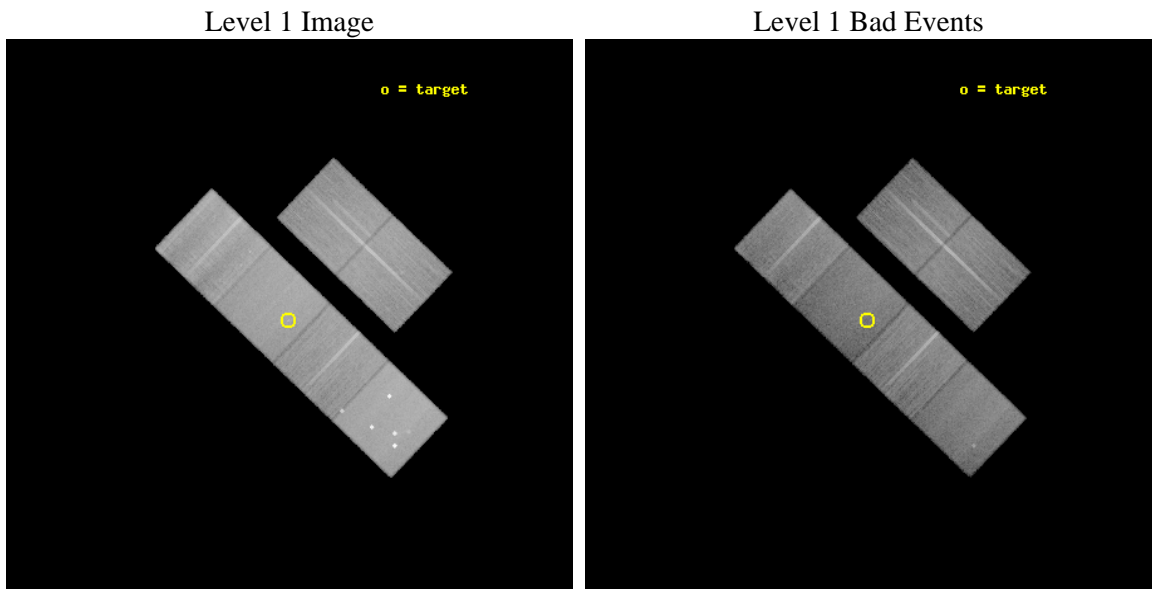
seq_num	900919	Sequence number
obs_id	11784	Observation id
title	COMBH: Chandra Observations of M-sigma Black Holes	Proposal title
observer	Dr. Kayhan Gultekin	Principal investigator
object	NGC4459	Source name
dtycycle	0	
cycle	P	events from which exps? Prim/Second/Both
ra_targ	187.25	Observer's specified target RA [deg]
dec_targ	13.978556	Observer's specified target Dec [deg]
ra_nom	187.24875328302	Nominal RA [deg]
dec_nom	13.973876885986	Nominal Dec [deg]
roll_nom	223.80418195198	Nominal Roll [deg]
revision	2	Processing version of data
ontime	30175.999887645	Sum of GTIs [s]
livetime	29793.893207262	Livetime [s]
ontime2	30175.999887645	Sum of GTIs [s]
ontime3	30172.758837342	Sum of GTIs [s]
ontime5	30175.999887645	Sum of GTIs [s]
ontime6	30172.758847356	Sum of GTIs [s]
ontime7	30175.999887645	Sum of GTIs [s]
ontime8	30175.999887645	Sum of GTIs [s]
l2events	381887	Number of level 2 events



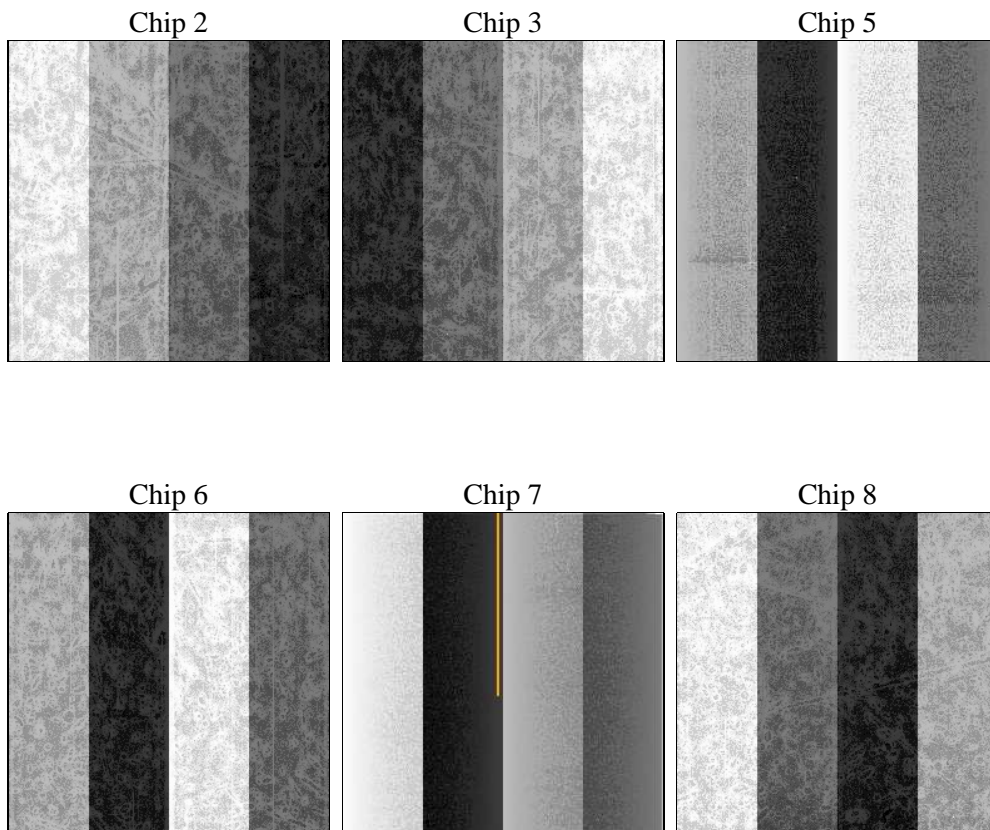
2 OBI

2.1 OBI

2.1.1 Images



2.1.2 Bias



2.1.3 Parameters

obi_num	0	Obi number	sched_exp_time	30000.000000	[s] Scheduled observation exposure time
ascdsver	8.4.5	Processing system revision	ontime	30175.999887645	Sum of GTIs [s]
caldbver	4.4.10	 	ontime2	30175.999887645	Sum of GTIs [s]
date	2012-06-24T21:50:47	Date and time of file creation	ontime3	30172.758837342	Sum of GTIs [s]
revision	2	Processing version of data	ontime5	30175.999887645	Sum of GTIs [s]
			ontime6	30172.758847356	Sum of GTIs [s]
			ontime7	30175.999887645	Sum of GTIs [s]
			ontime8	30175.999887645	Sum of GTIs [s]
			l1events	1653317	Number of level 1 events

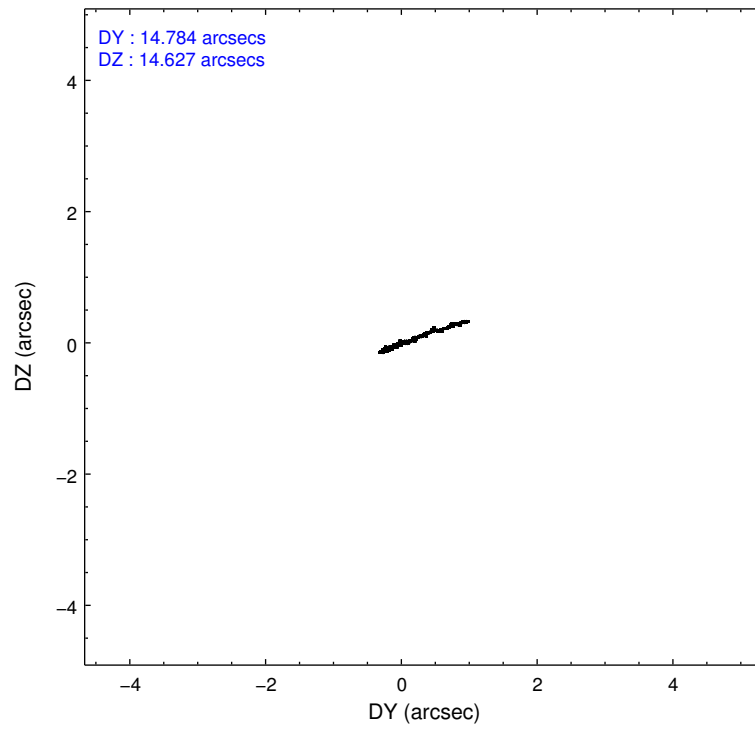
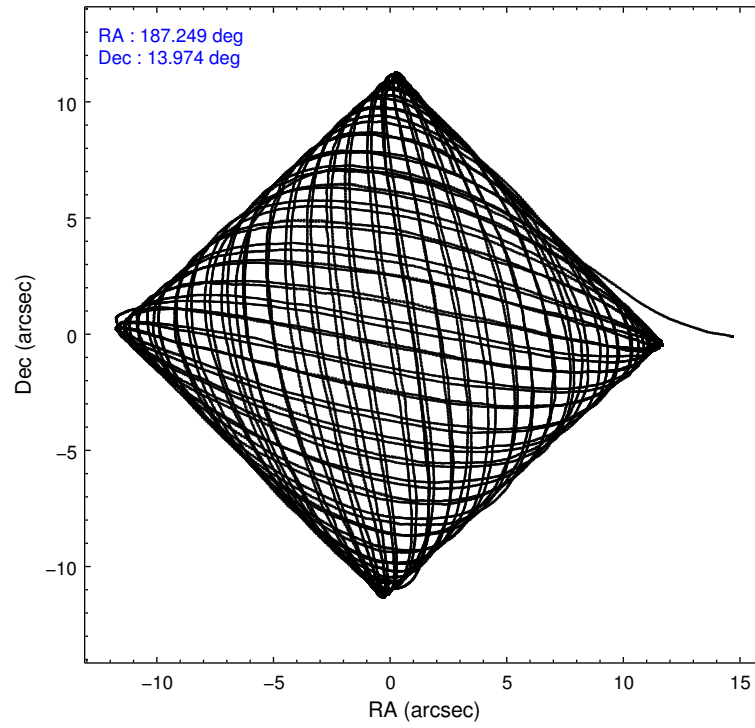
2.1.4 Events

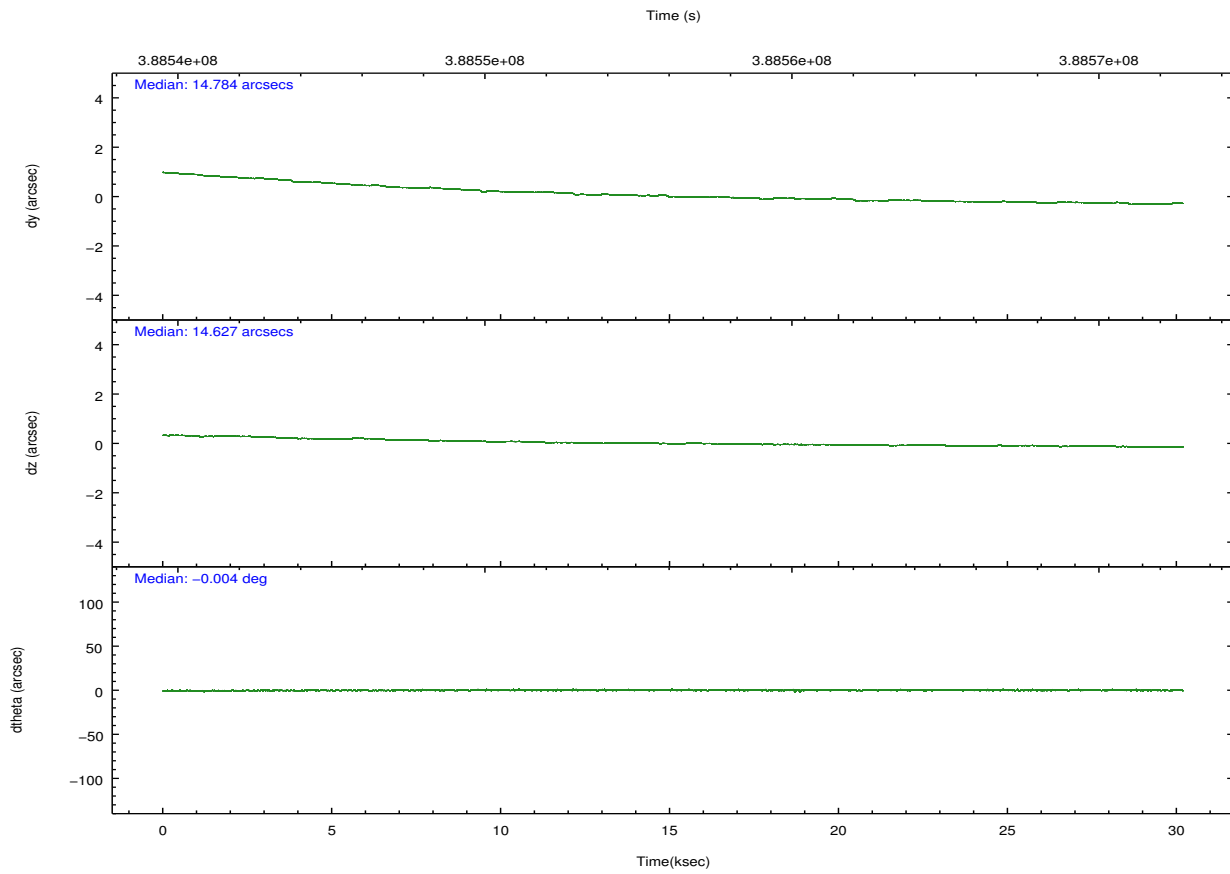
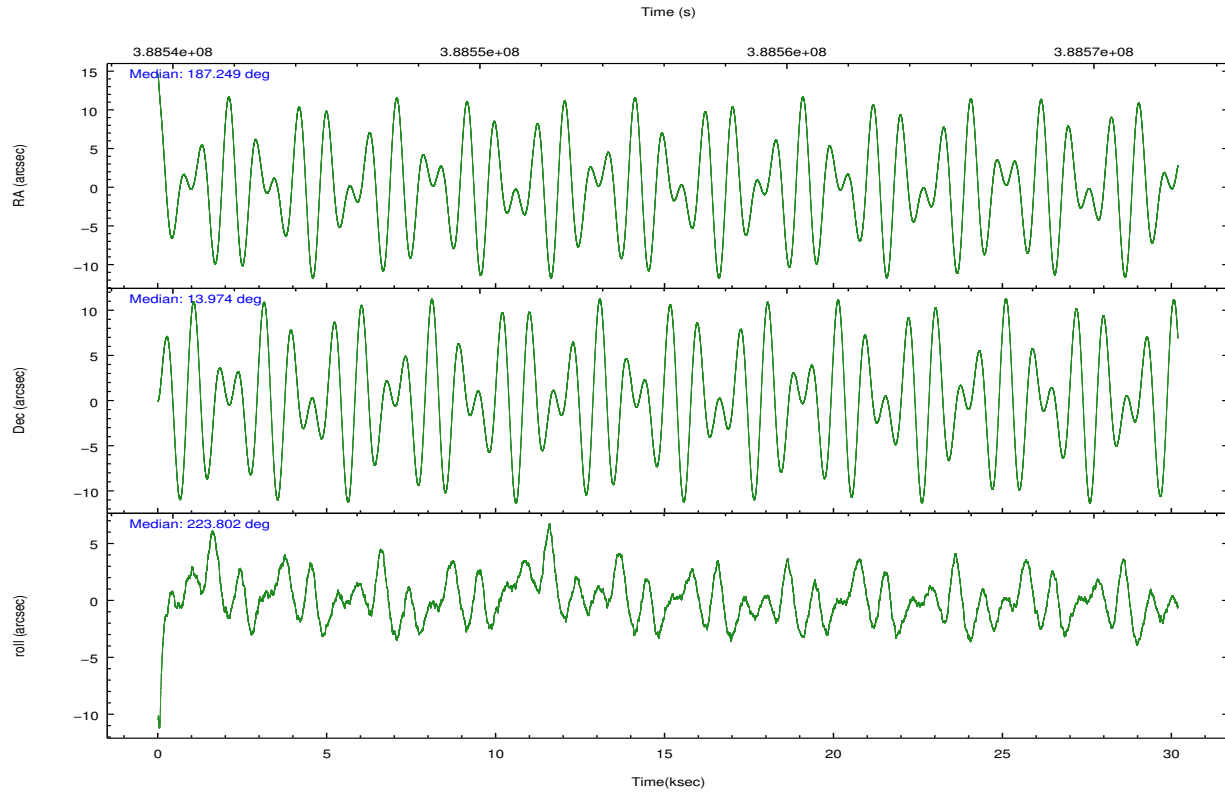
	ccd 2	ccd 3	ccd 5	ccd 6	ccd 7	ccd 8		ccd 2	ccd 3	ccd 5	ccd 6	ccd 7	ccd 8
level 1 events	241634	225044	374090	233744	283566	295239	grade 0 events	10385	9351	41111	11350	12989	24047
rejected events	215578	200907	175773	205646	154666	217755		4%	4%	10%	4%	4%	8%
rejected %	89%	89%	46%	87%	54%	73%	grade 1 events	143	139	1148	142	331	234
								0%	0%	0%	0%	0%	0%
							grade 2 events	6089	5118	55256	5948	26887	17870
								2%	2%	14%	2%	9%	6%
							grade 3 events	2594	2657	6615	2735	11707	8487
								1%	1%	1%	1%	4%	2%
							grade 4 events	2655	2663	6465	2755	11467	7743
								1%	1%	1%	1%	4%	2%
							grade 5 events	9031	10064	25756	10407	28622	14937
								3%	4%	6%	4%	10%	5%
							grade 6 events	4609	4641	90816	5605	67199	20086
								1%	2%	24%	2%	23%	6%
							grade 7 events	206128	190411	146923	194802	124364	201835
								85%	84%	39%	83%	43%	68%

2.2 Compared Parameters

Parameter	Planned	Actual	Parameter	Planned	Actual
Instrument	ACIS	ACIS	Obspar format version number	7	7
Detector	ACIS-235678	ACIS-235678	Obspar file type	PREDICTED	ACTUAL
Grating	NONE	NONE	Obspar update status	NONE	UPDATED
Data mode	FAINT	FAINT	CCD I0 on	N	N
Observation mode	POINTING	POINTING	CCD I1 on	N	N
[deg] Pointing RA	187.256236	187.248753283016	CCD I2 on	O1	Y
[deg] Pointing Dec	14.000217	13.97387688598582	CCD I3 on	O2	Y
[deg] Pointing Roll	223.645748	223.8041819519805	CCD S0 on	N	N
[mm] SIM focus pos	-0.684267	-0.6828225247311905	CCD S1 on	Y	Y
[mm] SIM defocus	0	0.001444936568705701	CCD S2 on	Y	Y
[mm] SIM translation stage pos	-190.132523	-190.1400660498719	CCD S3 on	Y	Y
[mm] SIM translation stage offset	0	0.00754346686406393	CCD S4 on	Y	Y
[s] Observation start time (MET)	388541219.184000	388539846.59864	CCD S5 on	N	N
Observation start date	2010-04-25T00:05:53	2010-04-24T23:44:06	Number of optional ACIS chips dropped	0	0
[s] Observation end time (MET)	388571219.184000	388572124.36278	On-chip summing requested	N	N
Observation end date	2010-04-25T08:25:53	2010-04-25T08:42:04	Subarray requested	NONE	NONE
Read mode	TIMED	TIMED	Alternating exposures requested	N	N
			[s] Primary exposure time	0.000000	3.2

2.3 Aspect



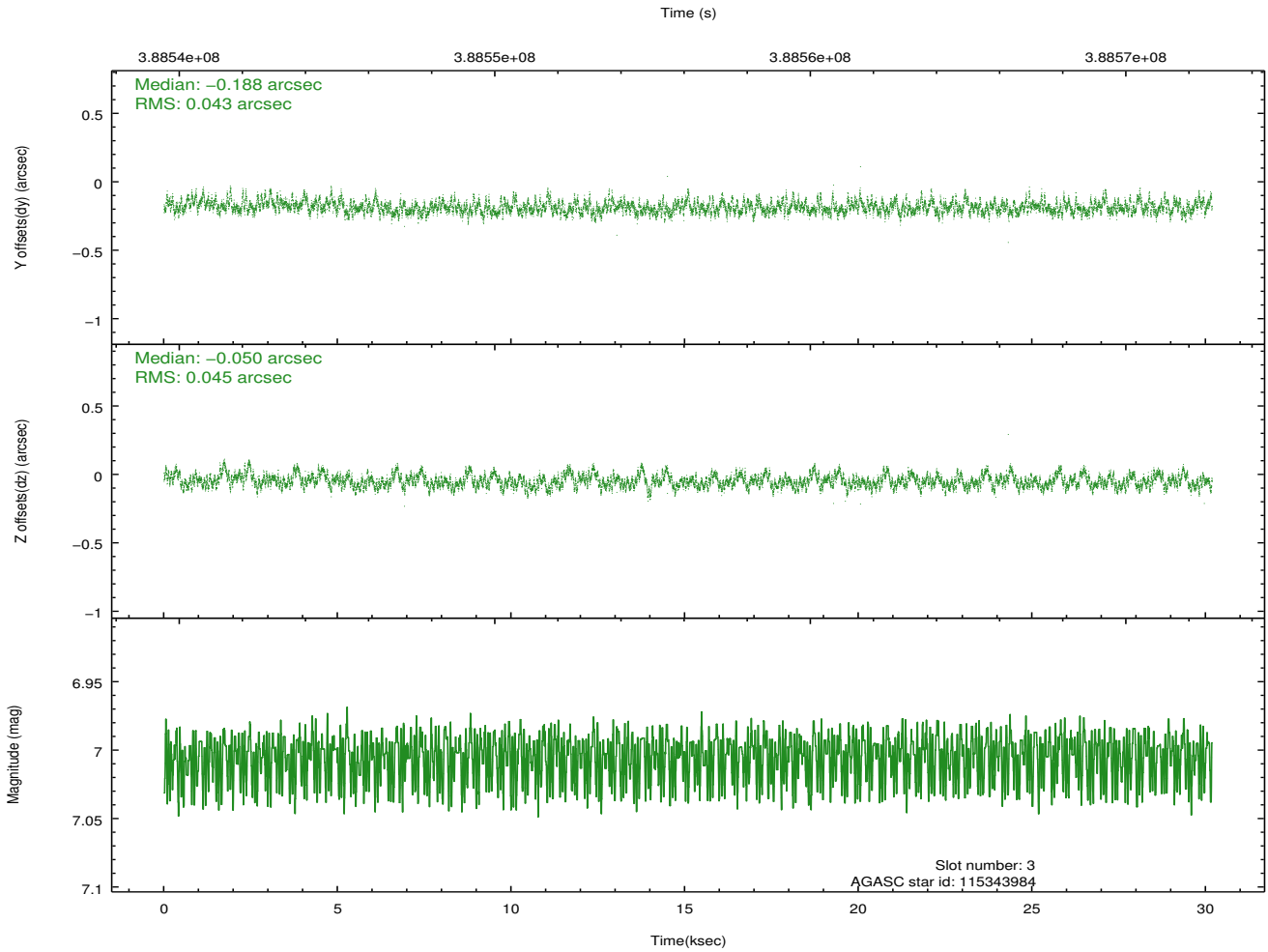
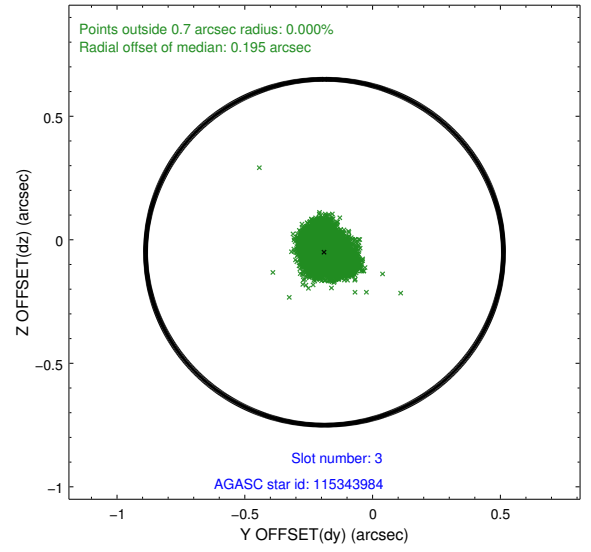
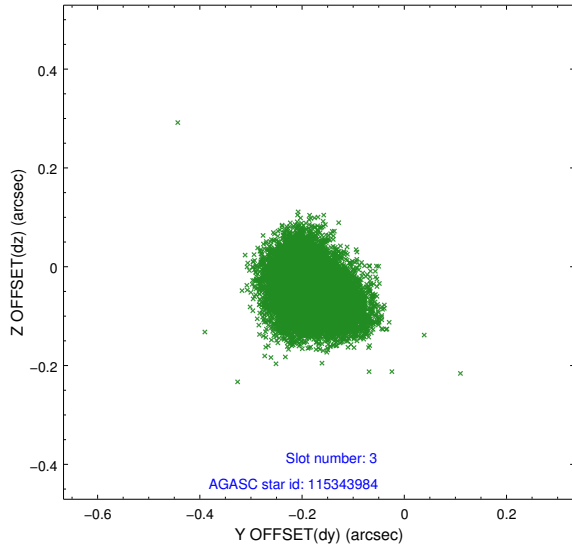


Slot Statistics

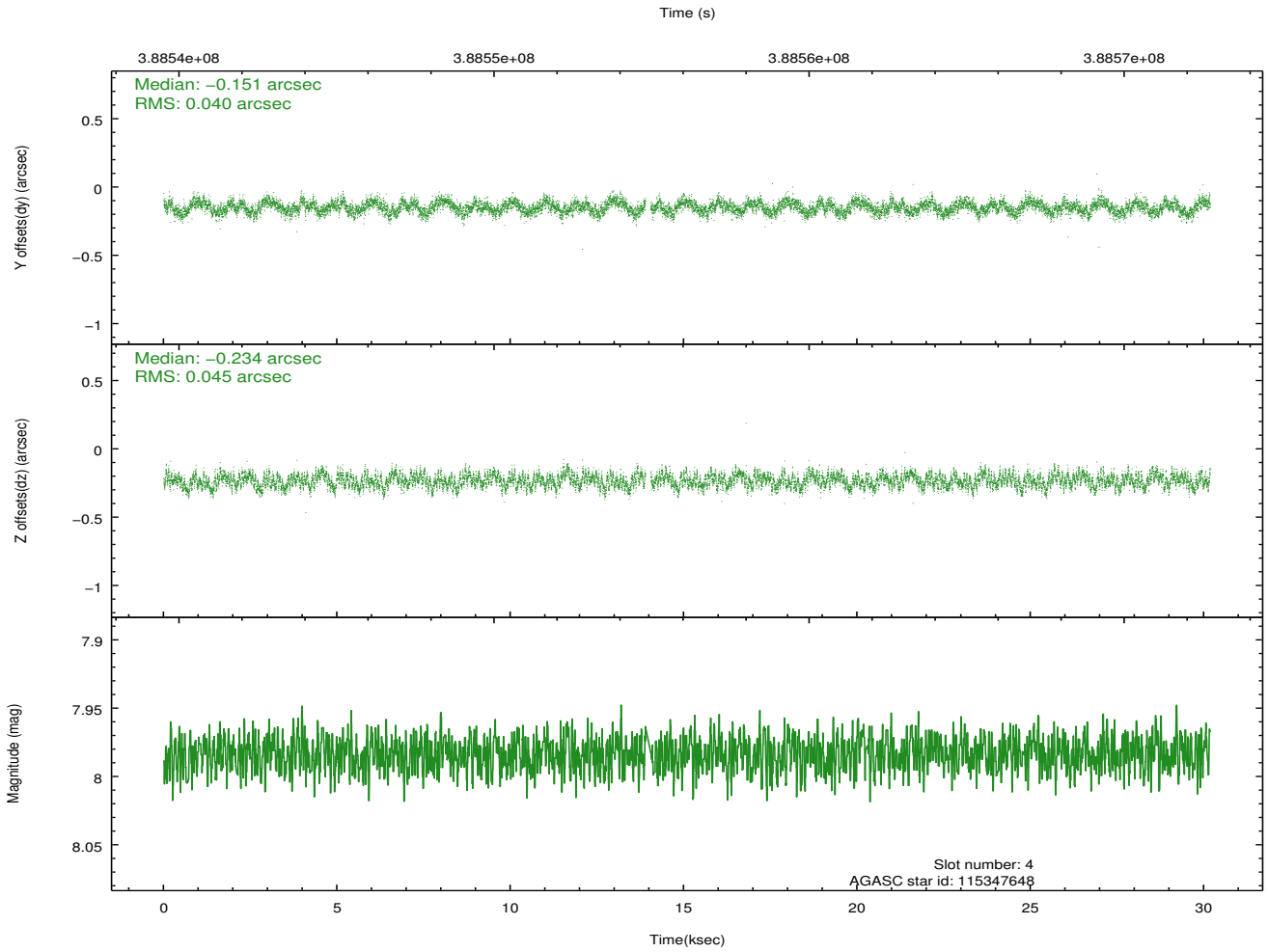
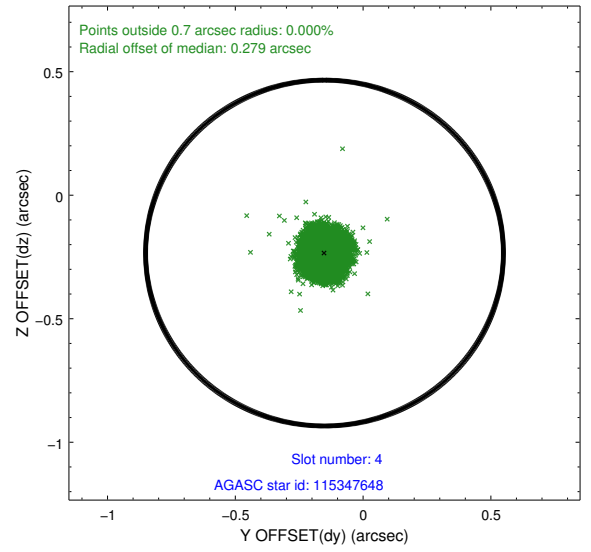
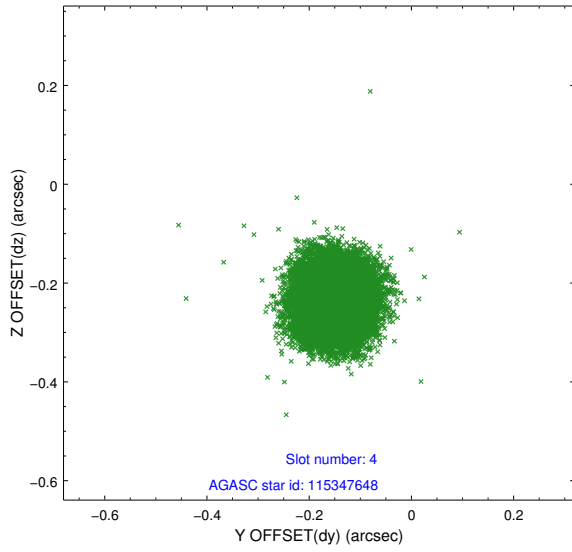
slot	status	id	mag	n_pts	med_dy	med_dz	dr1	dr2	ra	dec	mean_y	mean_z
0	FID	ACIS-S-2	6.99	7362	-0.099	-0.055	0.012	0.021	0.000000	0.000000	-767.96	-1736.09
1	FID	ACIS-S-4	7.07	7362	0.227	0.062	0.009	0.028	0.000000	0.000000	2145.60	172.45
2	FID	ACIS-S-5	7.10	7362	-0.161	0.001	0.012	0.041	0.000000	0.000000	-1820.78	166.12
3	GUIDE	115343984	7.00	14722	-0.188	-0.050	0.066	0.107	187.445111	14.650185	-2090.72	-1239.79
4	GUIDE	115347648	7.98	14647	-0.151	-0.234	0.065	0.100	187.273687	13.950334	79.85	171.75
5	GUIDE	115349328	8.74	14715	0.028	-0.036	0.082	0.129	186.721628	14.043786	1242.10	-1403.38
6	GUIDE	115350296	9.08	14712	0.122	0.122	0.085	0.136	187.140806	13.950701	415.36	-149.28
7	GUIDE	115348424	9.47	14707	0.185	0.196	0.145	0.228	187.199498	13.087929	2411.43	2239.92

2.4 Star Slots

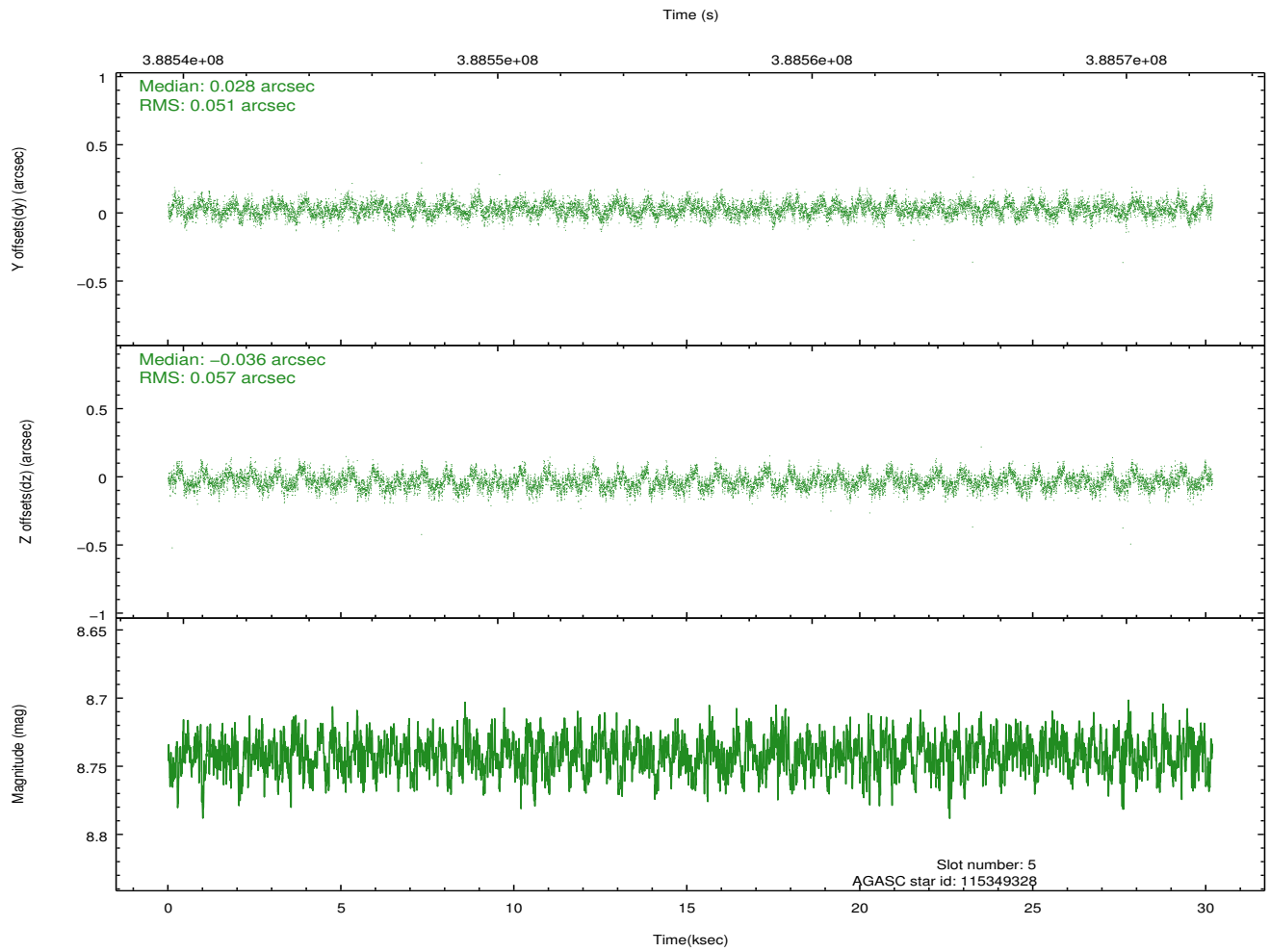
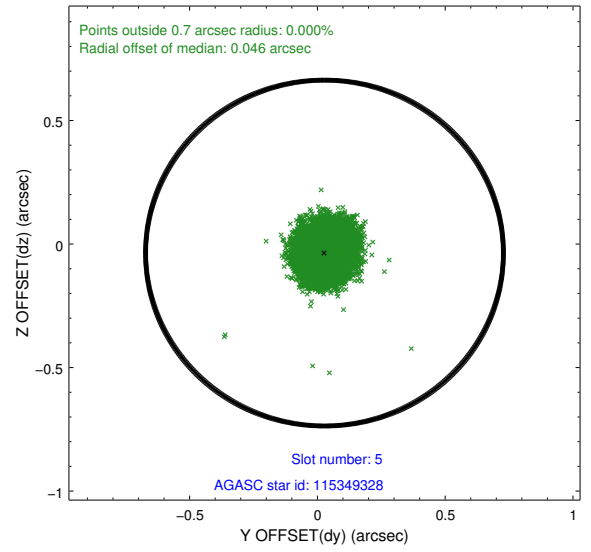
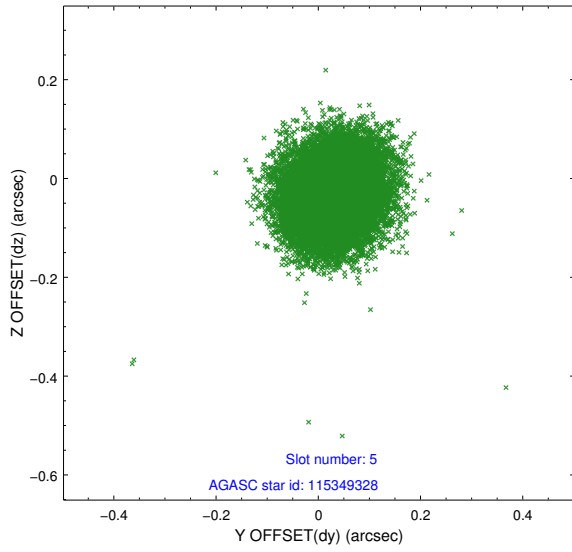
2.4.1 Slot 3



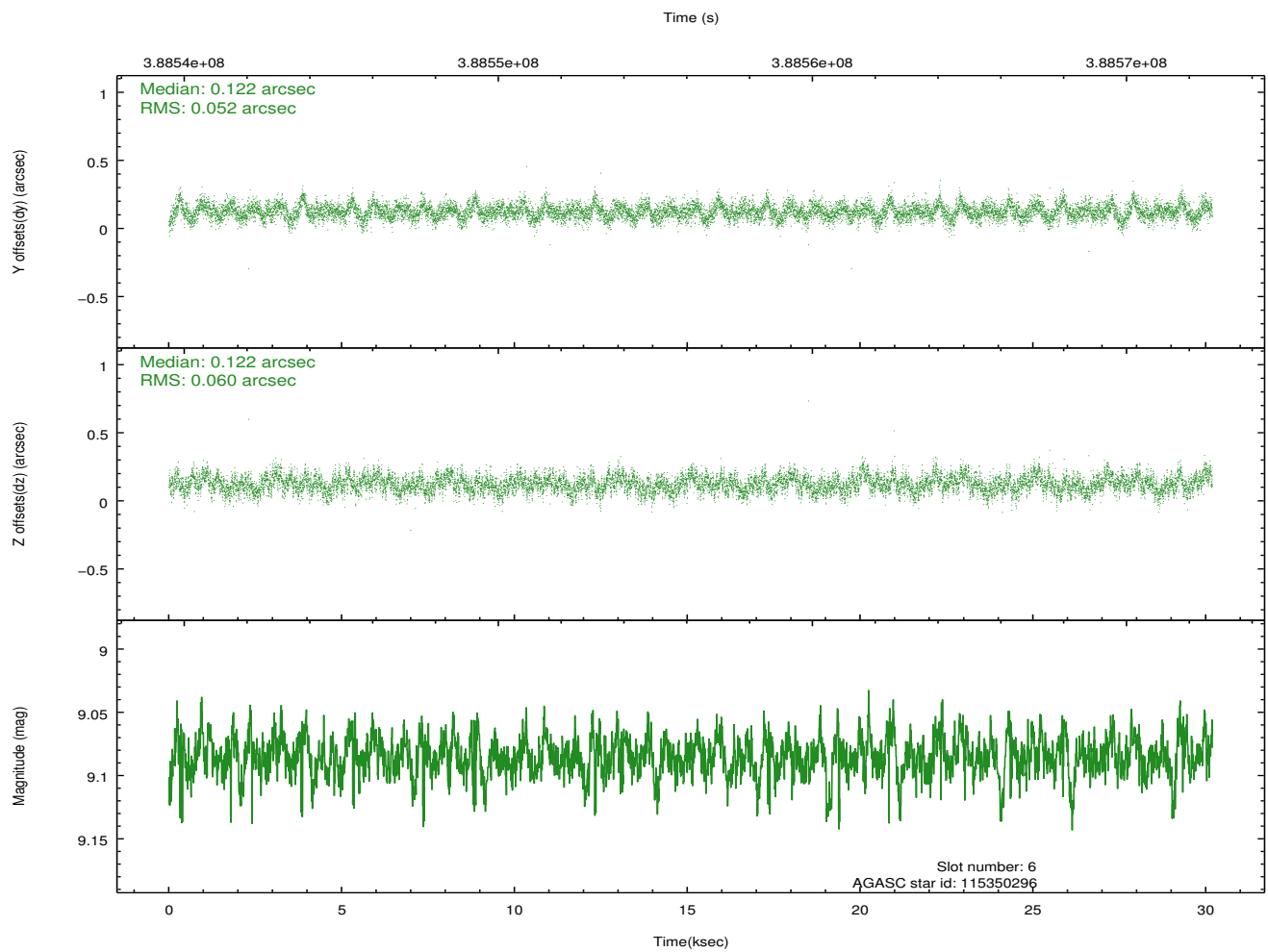
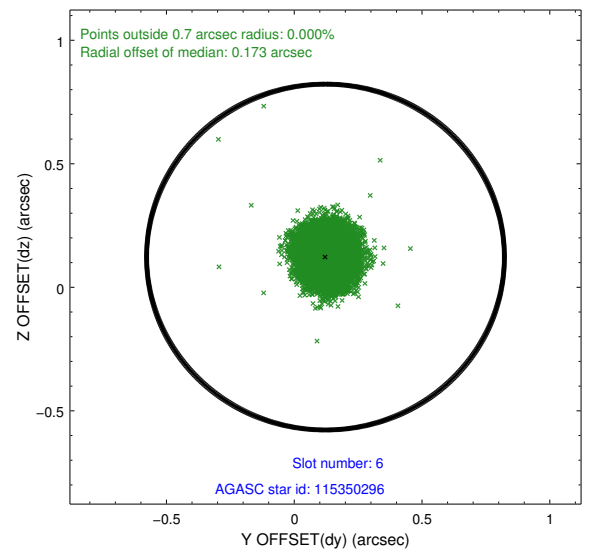
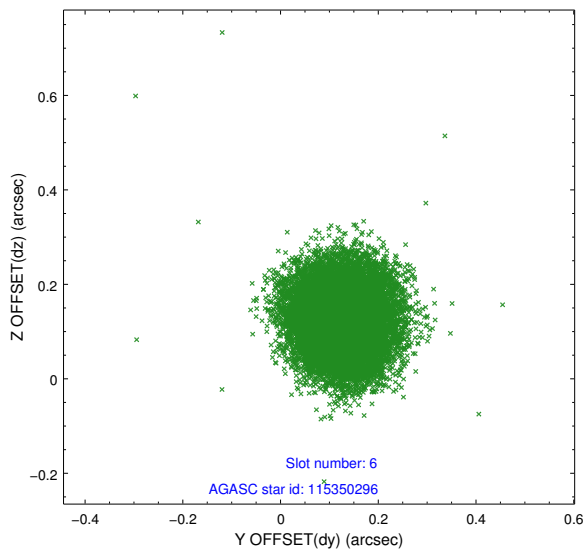
2.4.2 Slot 4



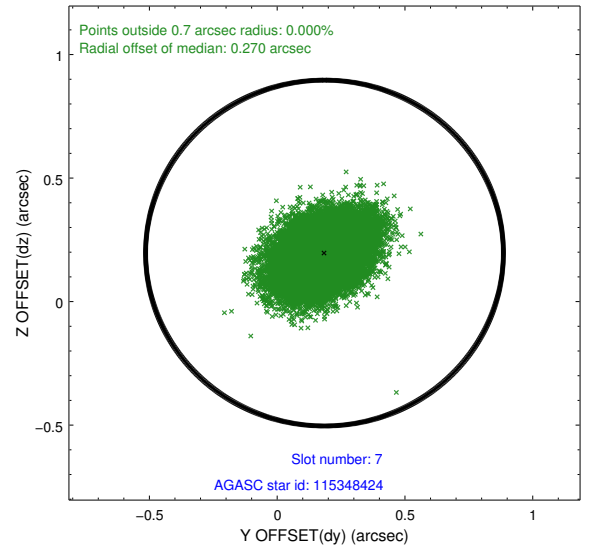
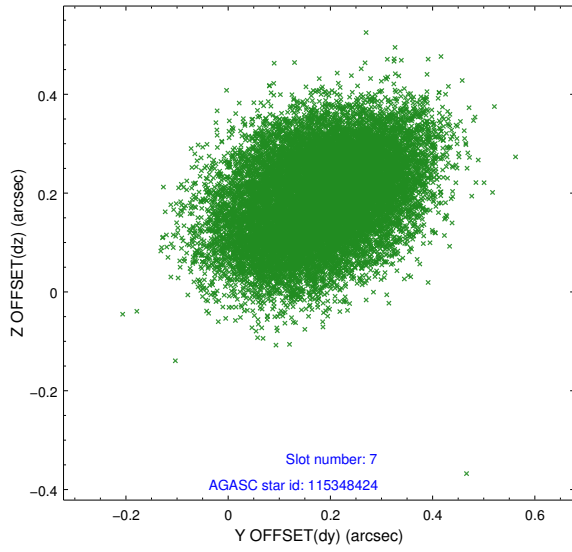
2.4.3 Slot 5



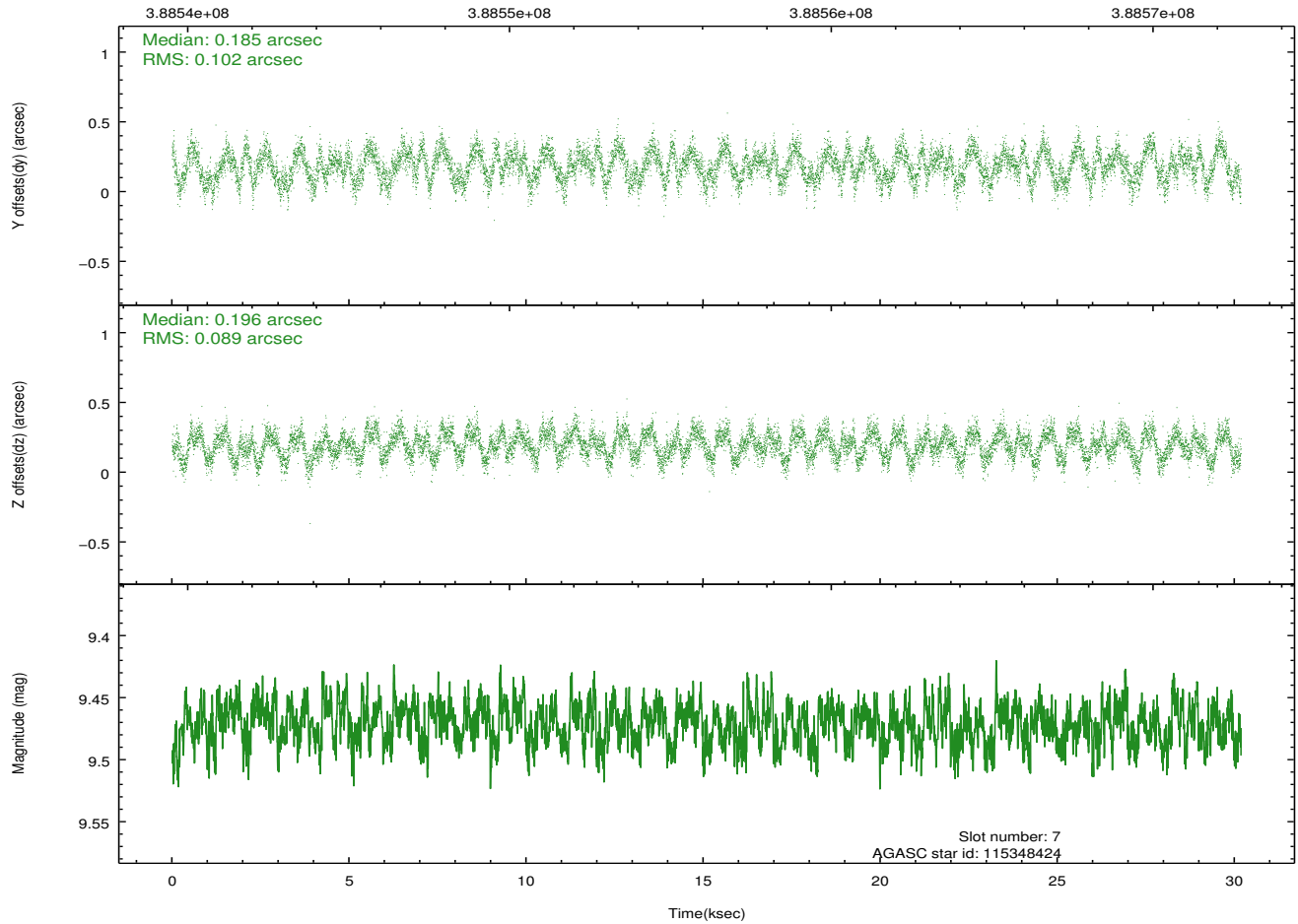
2.4.4 Slot 6



2.4.5 Slot 7

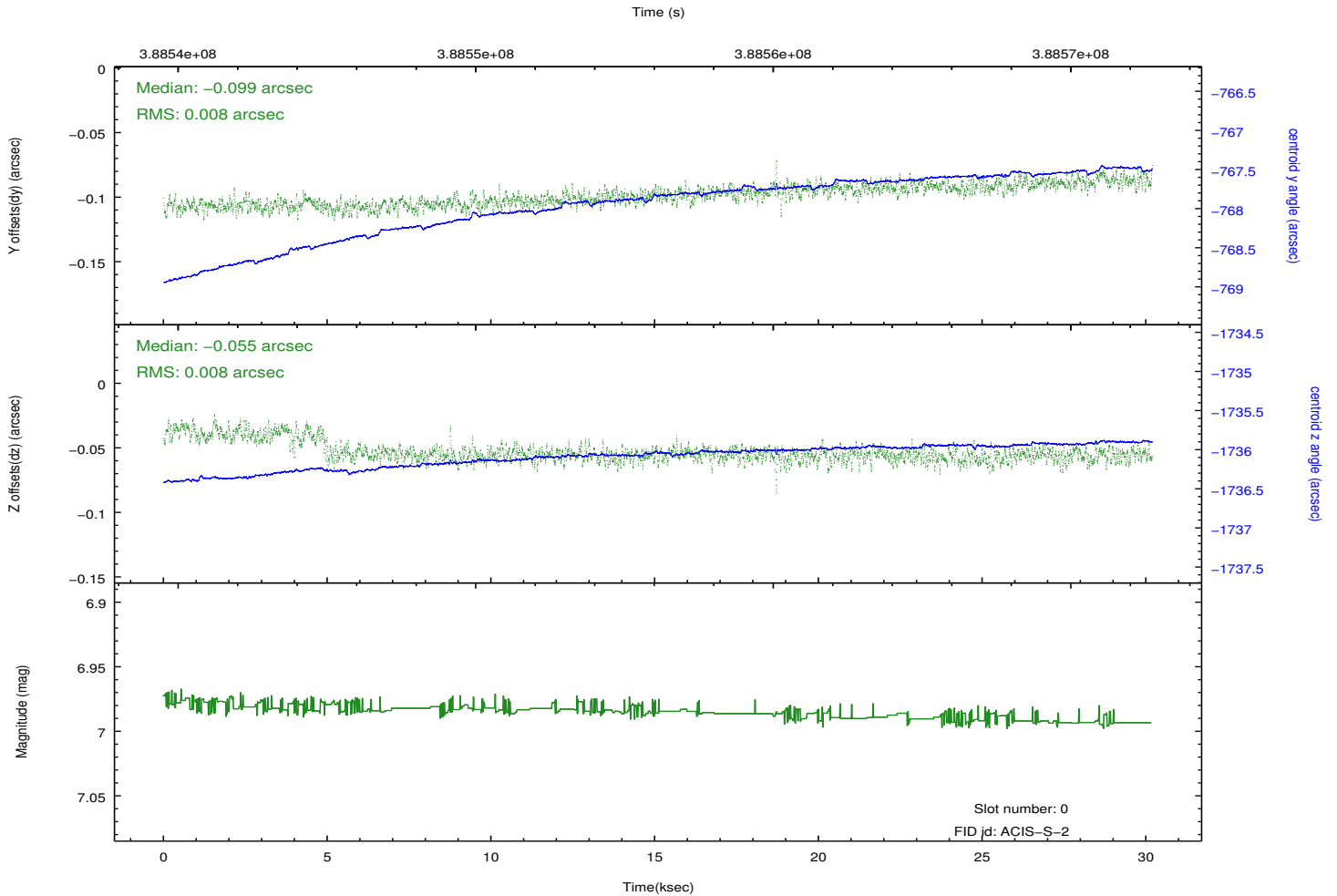
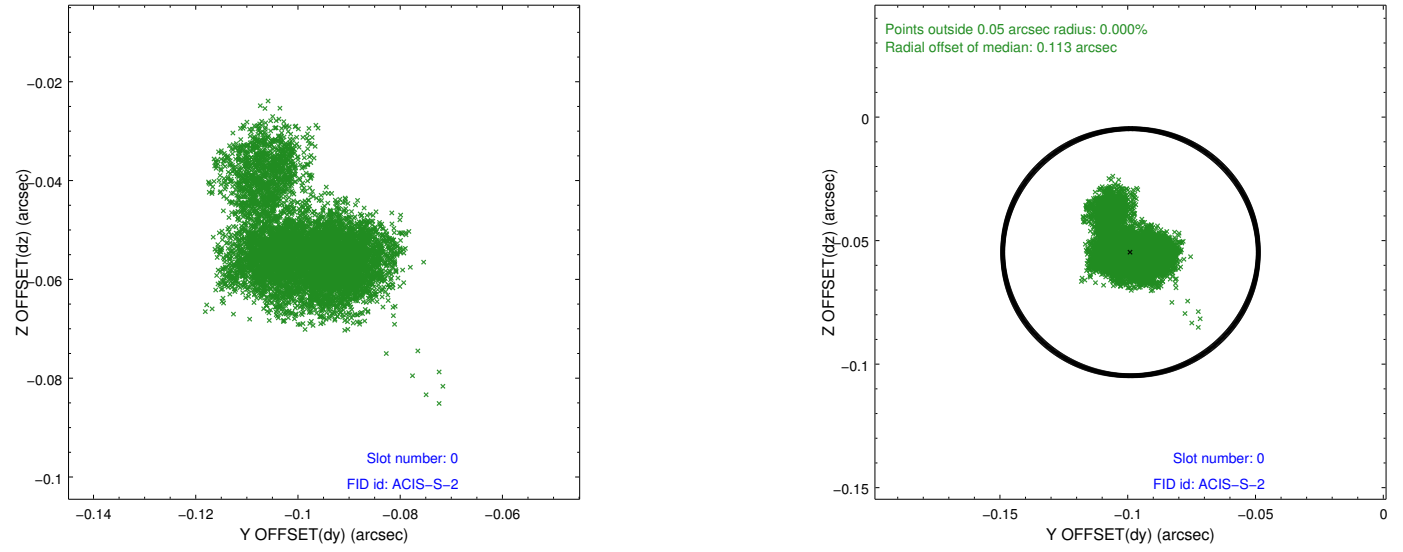


Time (s)

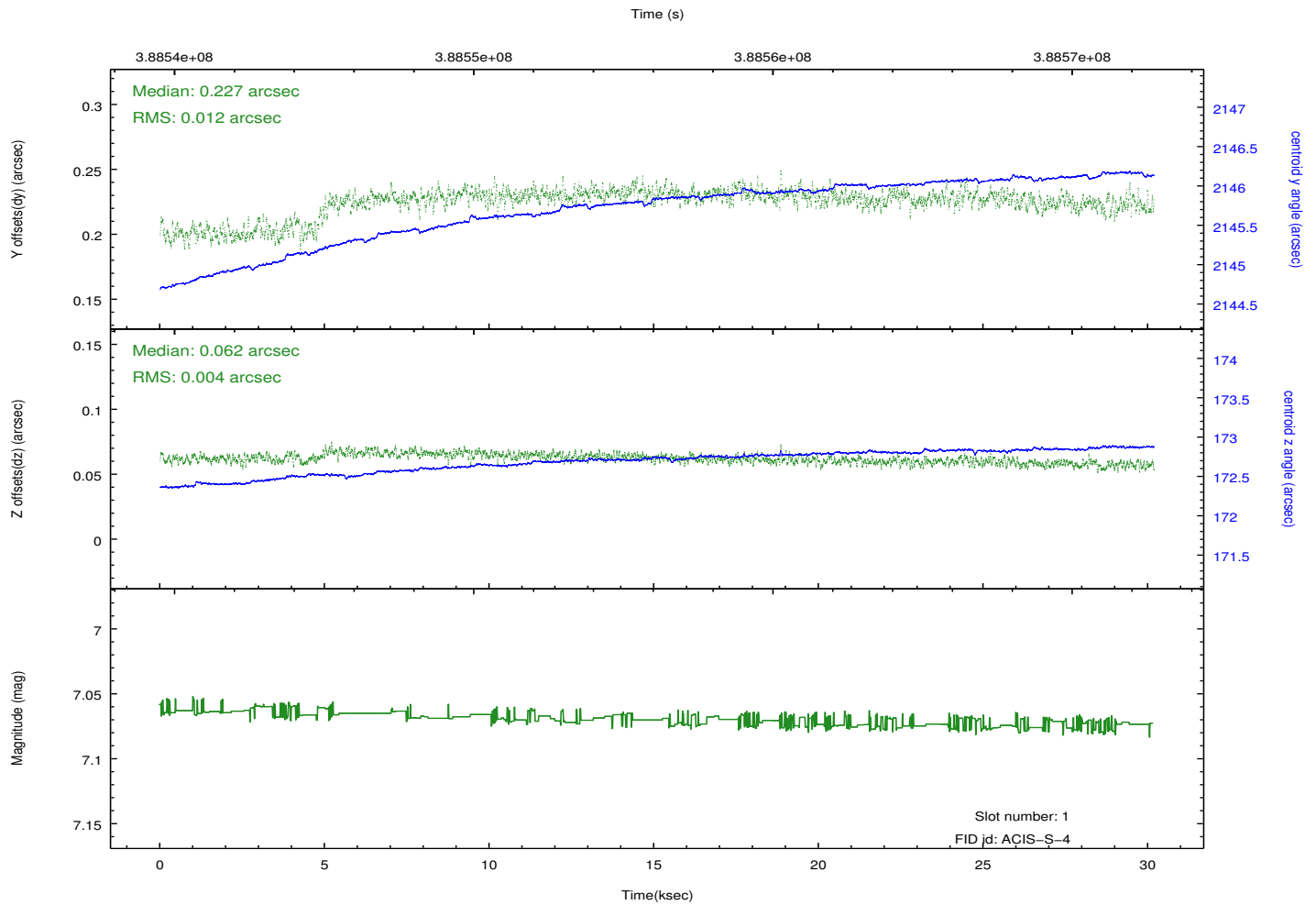
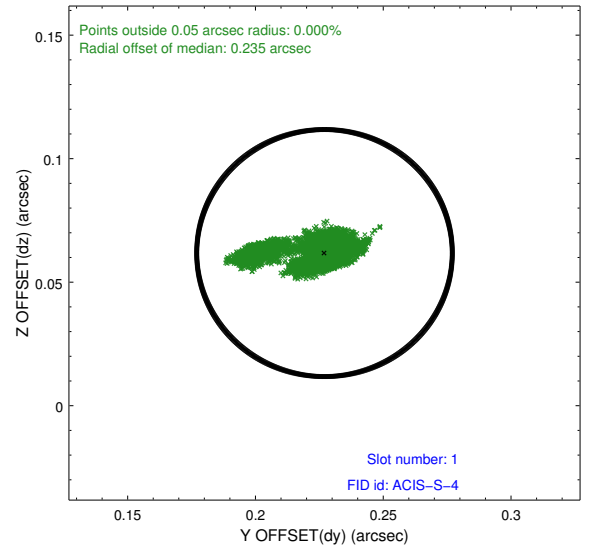
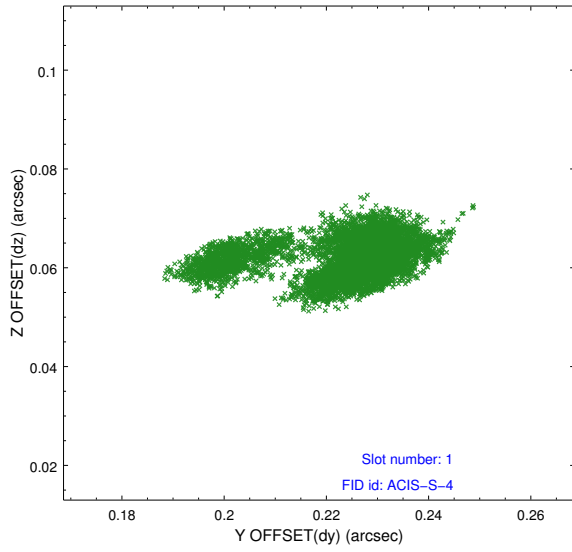


2.5 FID Slots

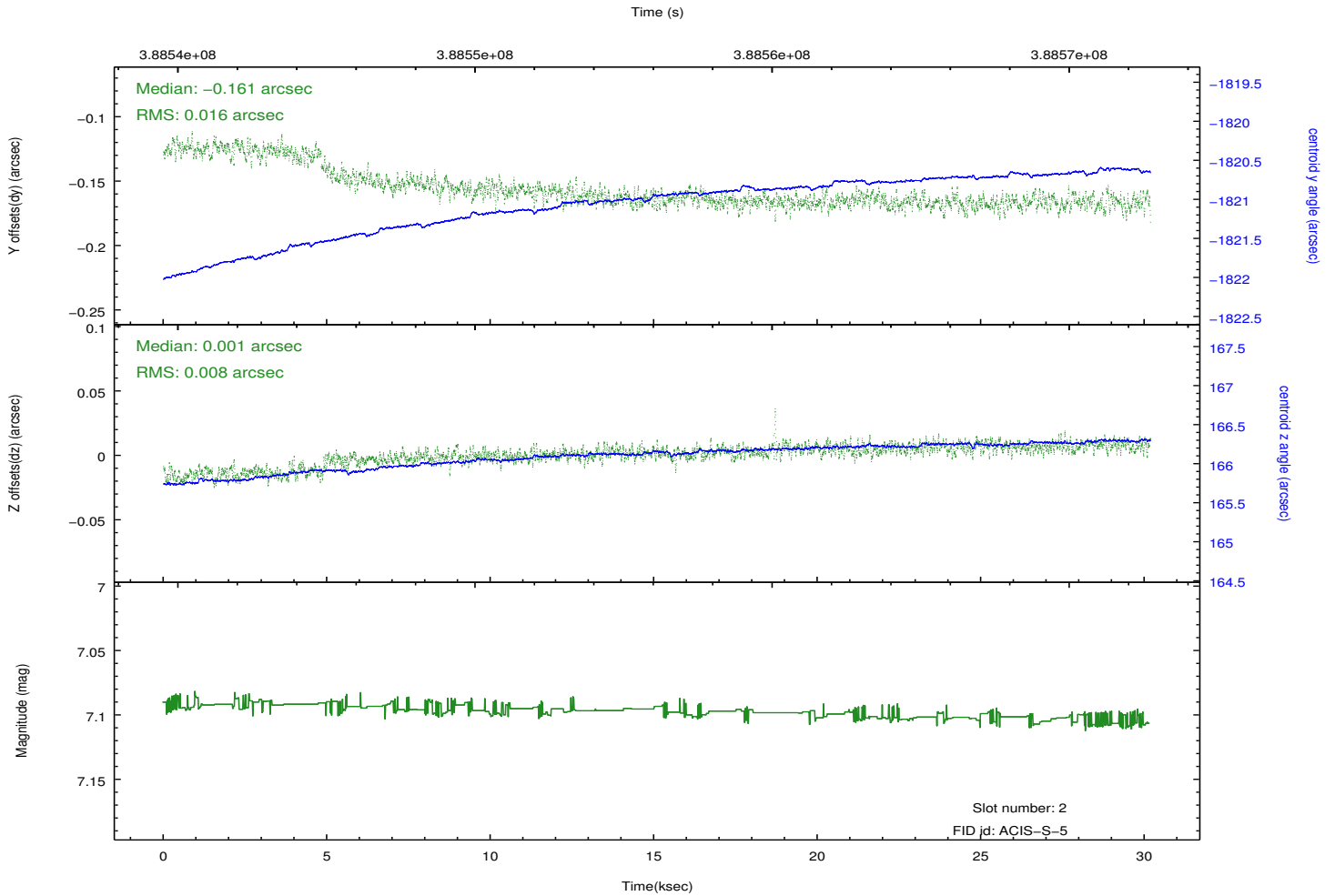
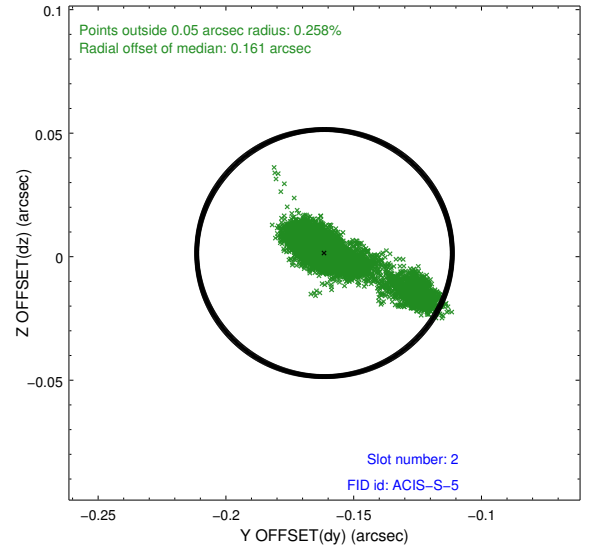
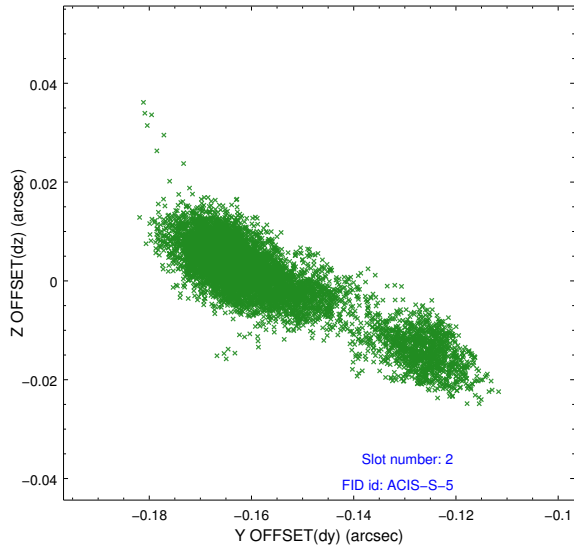
2.5.1 Slot 0



2.5.2 Slot 1



2.5.3 Slot 2



A Summary

A.1 Status

V&V Scientist	Beth Sundheim
V&V Date (YYYY-MM-DD)	2012.07.02
V&V Edition	1
V&V Disposition and Status	OK
V&V Charge Time	30.175999887645

A.2 Comments

Joint proposal with NRAO.