

# V&V Reference Report

## L2 ASCDS Version : 8.4.5

Observation 11834 - L2 Version 2  
Chandra X-Ray Center

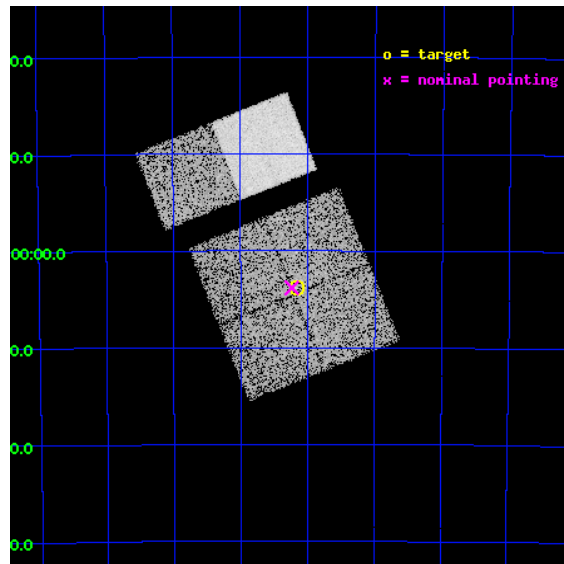
L2 Processing Date : Jun 25 2012

## Contents

<b>1</b>	<b>Front</b>	<b>2</b>
<b>2</b>	<b>OBI</b>	<b>3</b>
2.1	OBI . . . . .	3
2.1.1	Images . . . . .	3
2.1.2	Bias . . . . .	3
2.1.3	Parameters . . . . .	4
2.1.4	Events . . . . .	4
2.2	Compared Parameters . . . . .	5
2.3	Aspect . . . . .	6
2.4	Star Slots . . . . .	9
2.4.1	Slot 3 . . . . .	9
2.4.2	Slot 4 . . . . .	10
2.4.3	Slot 5 . . . . .	11
2.4.4	Slot 6 . . . . .	12
2.4.5	Slot 7 . . . . .	13
2.5	FID Slots . . . . .	14
2.5.1	Slot 0 . . . . .	14
2.5.2	Slot 1 . . . . .	15
2.5.3	Slot 2 . . . . .	16
<b>A</b>	<b>Summary</b>	<b>17</b>
A.1	Status . . . . .	17
A.2	Comments . . . . .	17

# 1 Front

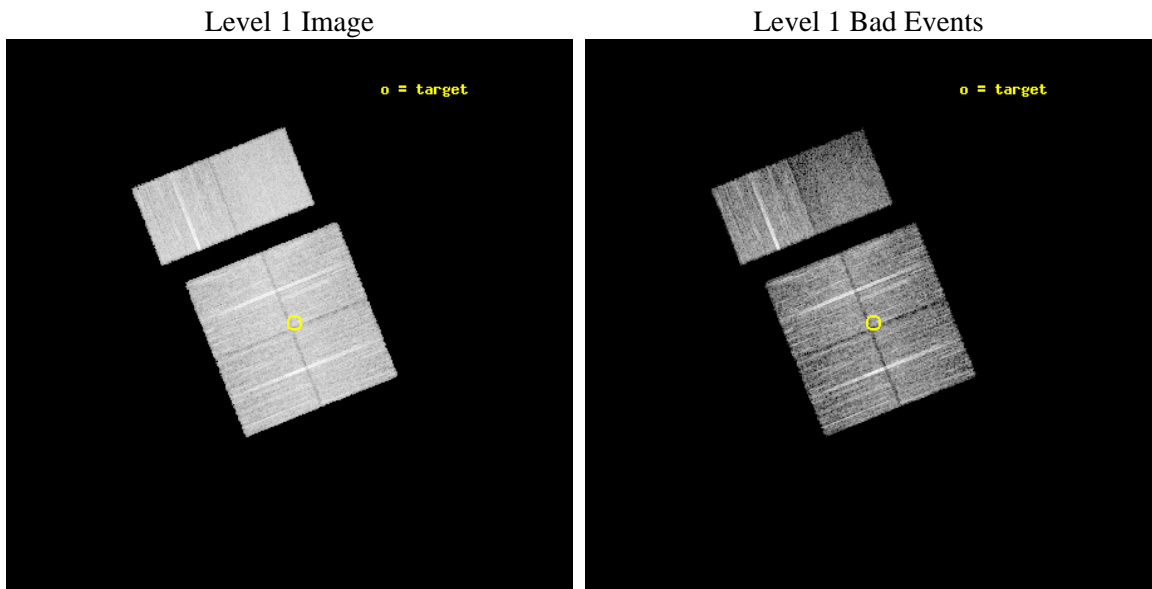
seq_num	501351	Sequence number
obs_id	11834	Observation id
title	Snap-shot survey of unidentified galactic GeV sources	Proposal tit
observer	Professor Gordon Garmire	Principal investigator
object	0FGL J1413.1-6203	Source name
dtycycle	0	&#160
cycle	P	events from which exps? Prim/Second/Both
ra_targ	213.291667	Observer's specified target RA [deg]
dec_targ	-62.063056	Observer's specified target Dec [deg]
ra_nom	213.3089757235	Nominal RA [deg]
dec_nom	-62.063711275728	Nominal Dec [deg]
roll_nom	338.29167559545	Nominal Roll [deg]
revision	2	Processing version of data
ontime	10051.199962616	Sum of GTIs [s]
livetime	9923.9256165833	Livetime [s]
ontime0	10047.958982289	Sum of GTIs [s]
ontime1	10051.199962616	Sum of GTIs [s]
ontime2	10051.199962616	Sum of GTIs [s]
ontime3	10051.199962616	Sum of GTIs [s]
ontime6	10051.199962616	Sum of GTIs [s]
ontime7	10051.199962616	Sum of GTIs [s]
l2events	68429	Number of level 2 events



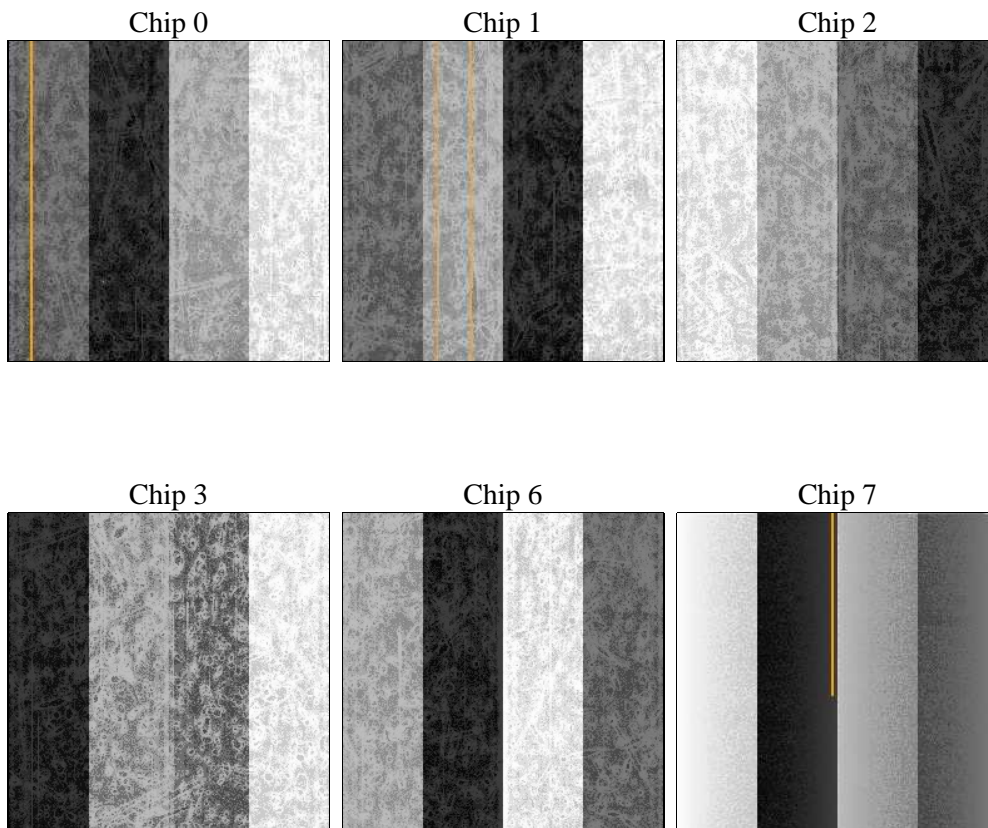
## 2 OBI

### 2.1 OBI

#### 2.1.1 Images



#### 2.1.2 Bias



### 2.1.3 Parameters

obi_num	0	Obi number	sched_exp_time	10000.000000	[s] Scheduled observation exposure time
ascdsver	8.4.5	Processing system revision	ontime	10051.199962616	Sum of GTIs [s]
caldbver	4.4.10	&#160	ontime0	10047.958982289	Sum of GTIs [s]
date	2012-06-26T00:13:08	Date and time of file creation	ontime1	10051.199962616	Sum of GTIs [s]
revision	2	Processing version of data	ontime2	10051.199962616	Sum of GTIs [s]
			ontime3	10051.199962616	Sum of GTIs [s]
			ontime6	10051.199962616	Sum of GTIs [s]
			ontime7	10051.199962616	Sum of GTIs [s]
			l1events	419252	Number of level 1 events

### 2.1.4 Events

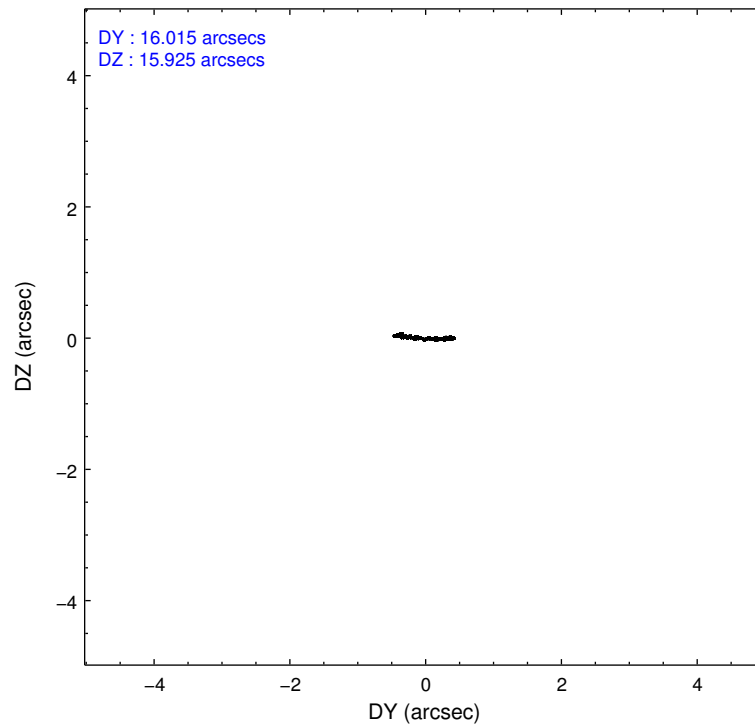
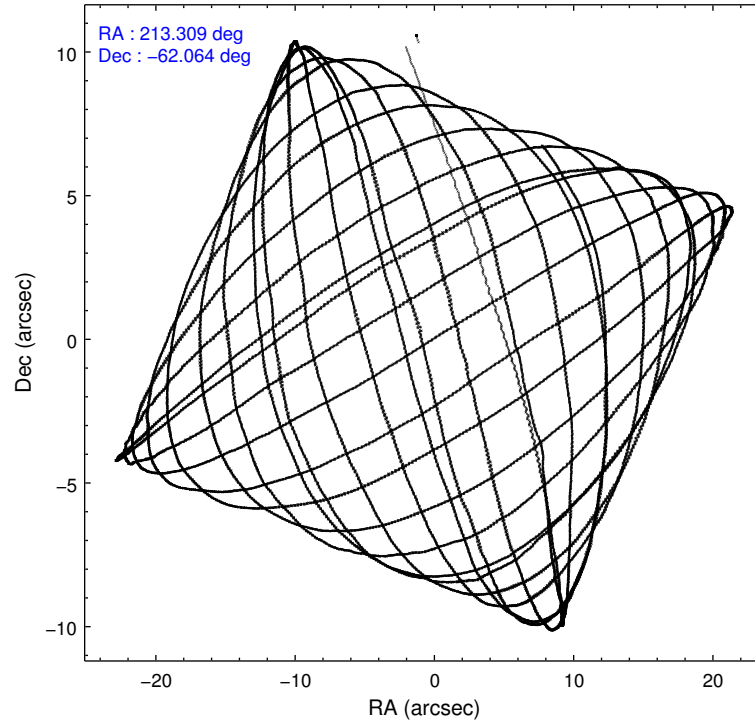
	ccd 0	ccd 1	ccd 2	ccd 3	ccd 6	ccd 7
level 1 events	65340	64839	74051	68622	72829	73571
rejected events	57678	56409	66088	60890	64640	37428
rejected %	88%	86%	89%	88%	88%	50%

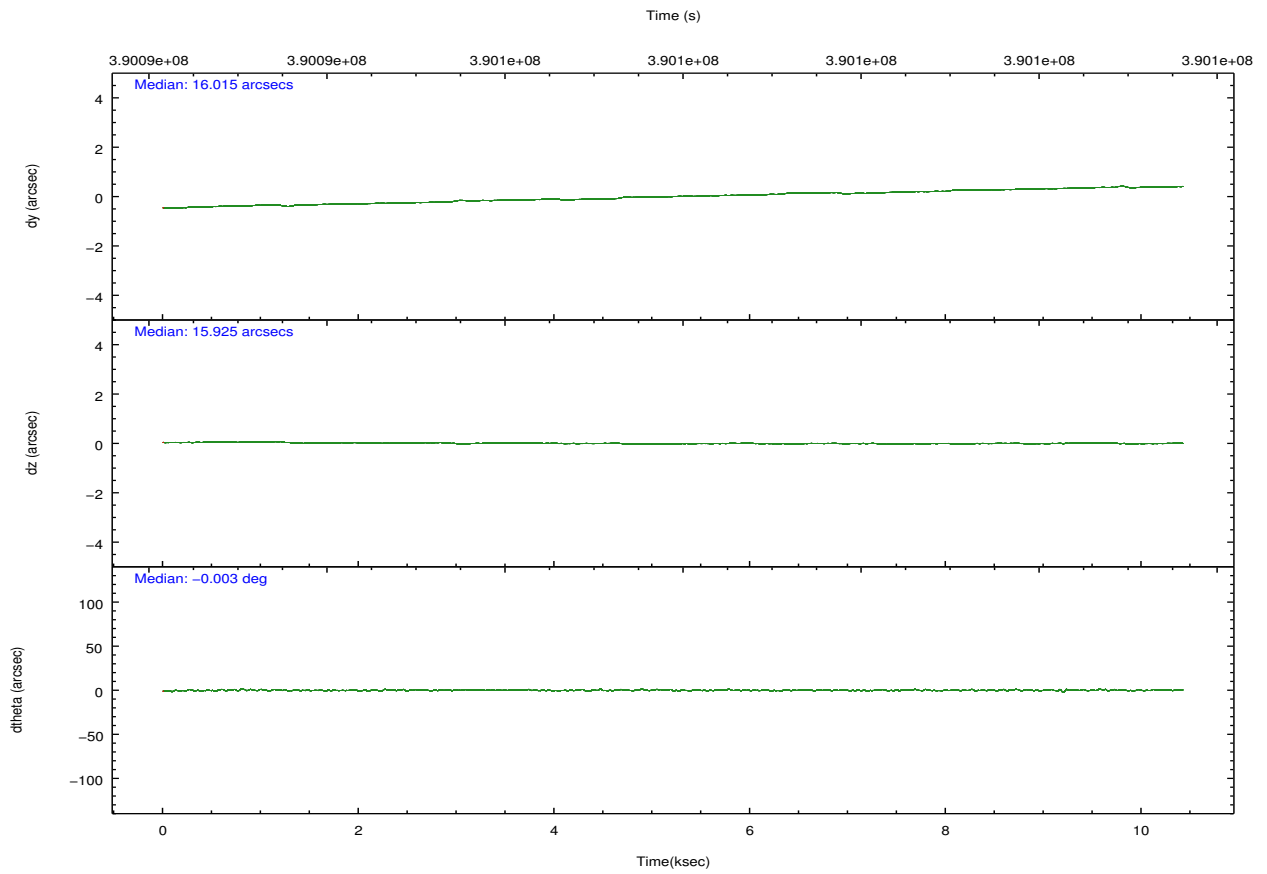
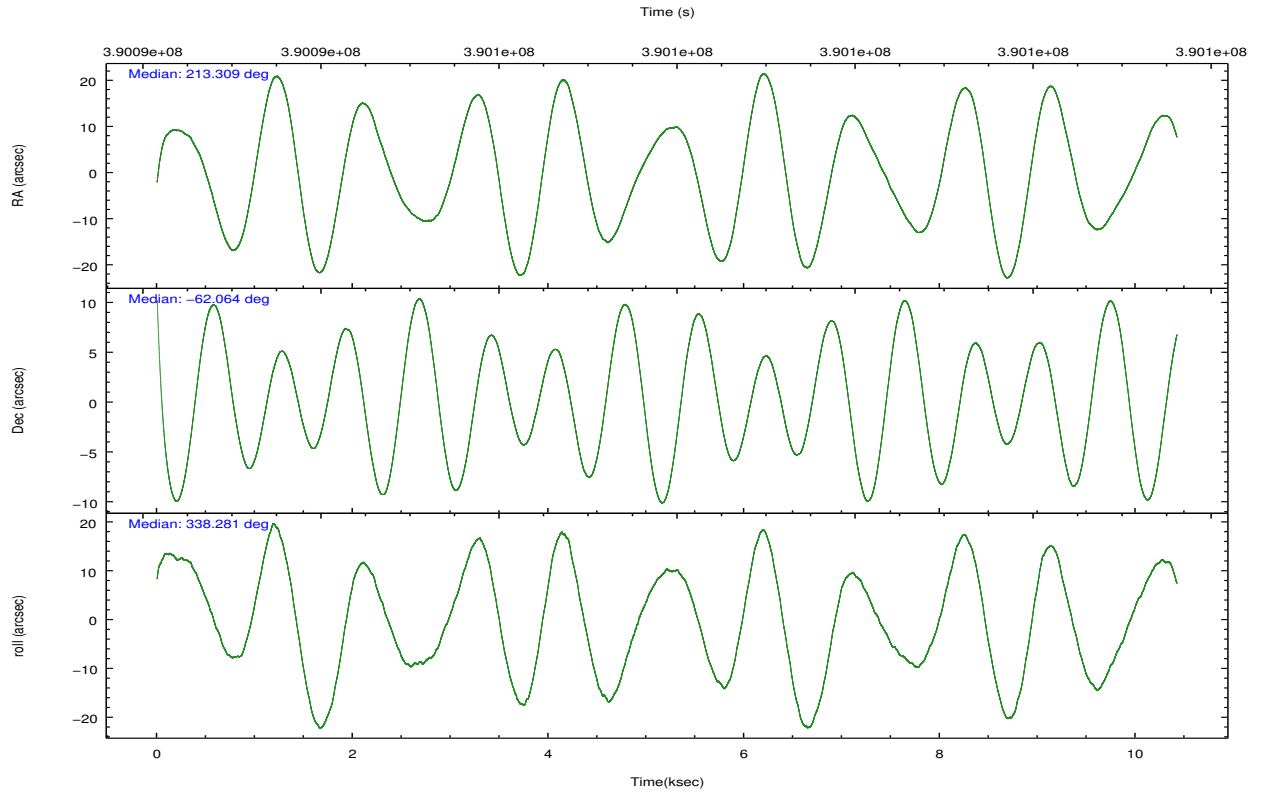
	ccd 0	ccd 1	ccd 2	ccd 3	ccd 6	ccd 7
grade 0 events	3033	3216	3180	3187	3157	3604
	4%	4%	4%	4%	4%	4%
grade 1 events	47	39	46	49	57	112
	0%	0%	0%	0%	0%	0%
grade 2 events	1822	1834	1909	1564	1799	7820
	2%	2%	2%	2%	2%	10%
grade 3 events	782	942	755	778	817	3332
	1%	1%	1%	1%	1%	4%
grade 4 events	725	810	800	790	819	3340
	1%	1%	1%	1%	1%	4%
grade 5 events	2324	2522	2219	2716	2703	7770
	3%	3%	2%	3%	3%	10%
grade 6 events	1304	1633	1321	1422	1602	18068
	1%	2%	1%	2%	2%	24%
grade 7 events	55303	53843	63821	58116	61875	29525
	84%	83%	86%	84%	84%	40%

## 2.2 Compared Parameters

Parameter	Planned	Actual	Parameter	Planned	Actual
Instrument	ACIS	ACIS	Obspar format version number	7	7
Detector	ACIS-012367	ACIS-012367	Obspar file type	PREDICTED	ACTUAL
Grating	NONE	NONE	Obspar update status	NONE	UPDATED
Data mode	VFAINT	VFAINT	CCD I0 on	Y	Y
Observation mode	POINTING	POINTING	CCD I1 on	Y	Y
[deg] Pointing RA	213.250819	213.3089757234973	CCD I2 on	Y	Y
[deg] Pointing Dec	-62.067749	-62.06371127572772	CCD I3 on	Y	Y
[deg] Pointing Roll	338.031599	338.2916755954494	CCD S0 on	N	N
[mm] SIM focus pos	-0.782348	-0.7809083437167272	CCD S1 on	N	N
[mm] SIM defocus	0	0.001439871863259334	CCD S2 on	O2	Y
[mm] SIM translation stage pos	-233.592463	-233.5874344608287	CCD S3 on	O1	Y
[mm] SIM translation stage offset	0	-0.005018542100998502	CCD S4 on	N	N
[s] Observation start time (MET)	390093101.184000	390091973.42757	CCD S5 on	N	N
Observation start date	2010-05-12T23:10:35	2010-05-12T22:52:53	Number of optional ACIS chips dropped	0	0
[s] Observation end time (MET)	390103101.184000	390103954.14068	On-chip summing requested	N	N
Observation end date	2010-05-13T01:57:15	2010-05-13T02:12:34	Subarray requested	NONE	NONE
Read mode	TIMED	TIMED	Alternating exposures requested	N	N
			[s] Primary exposure time	0.000000	3.2

## 2.3 Aspect



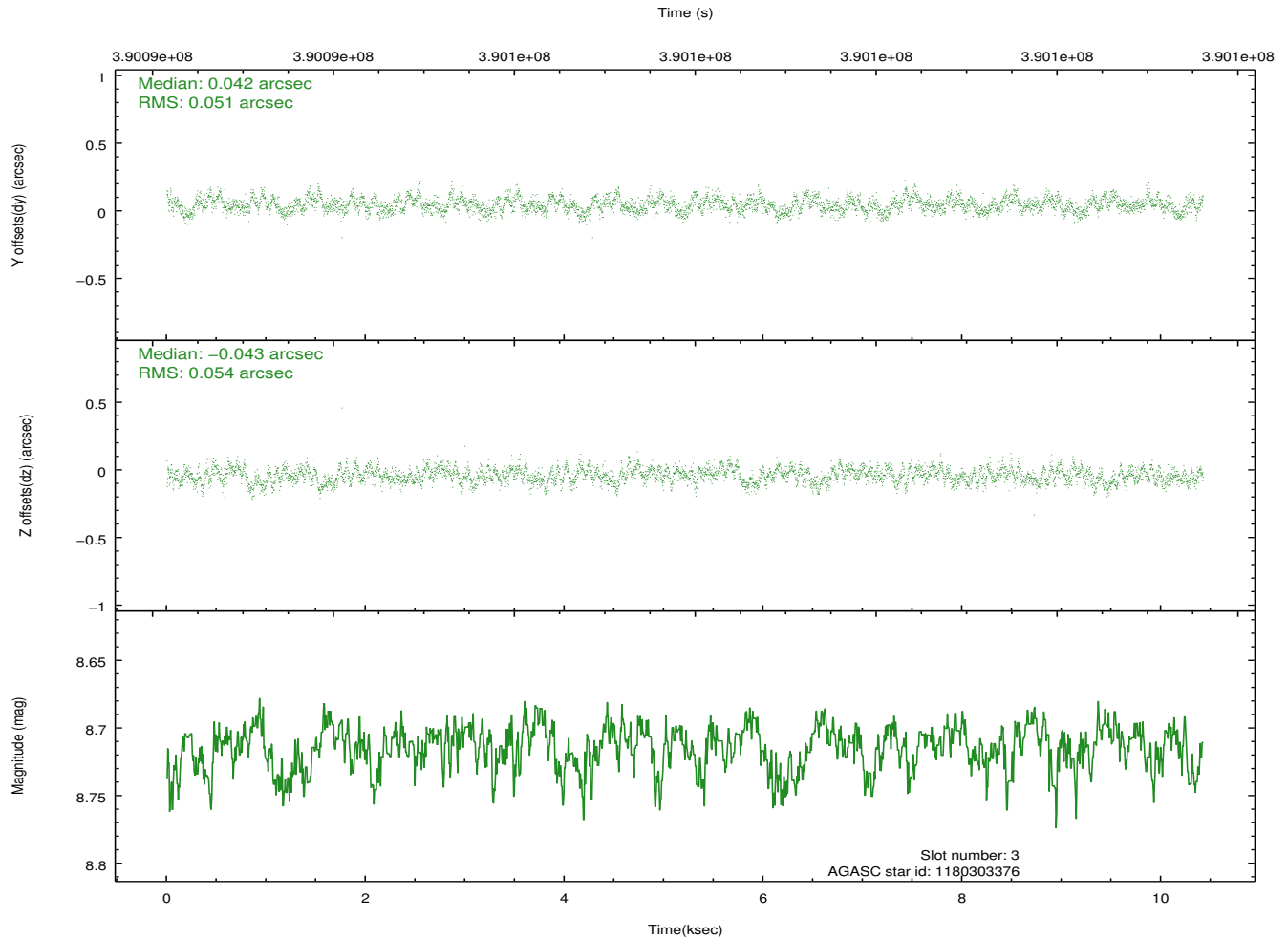
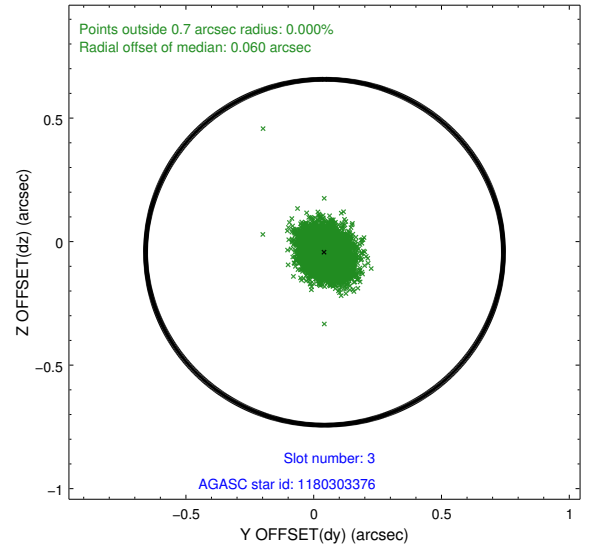
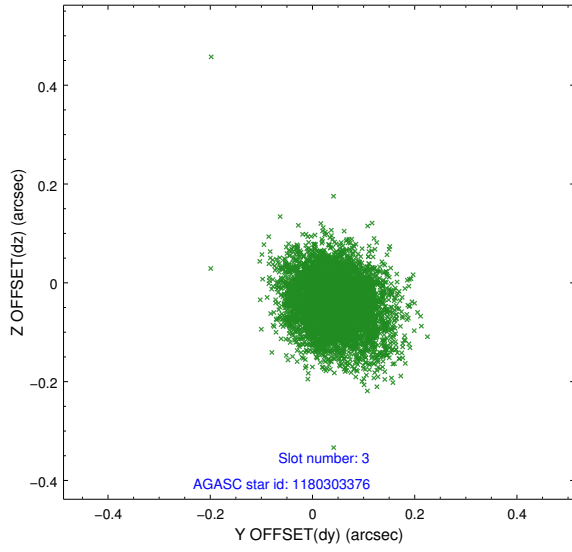


### Slot Statistics

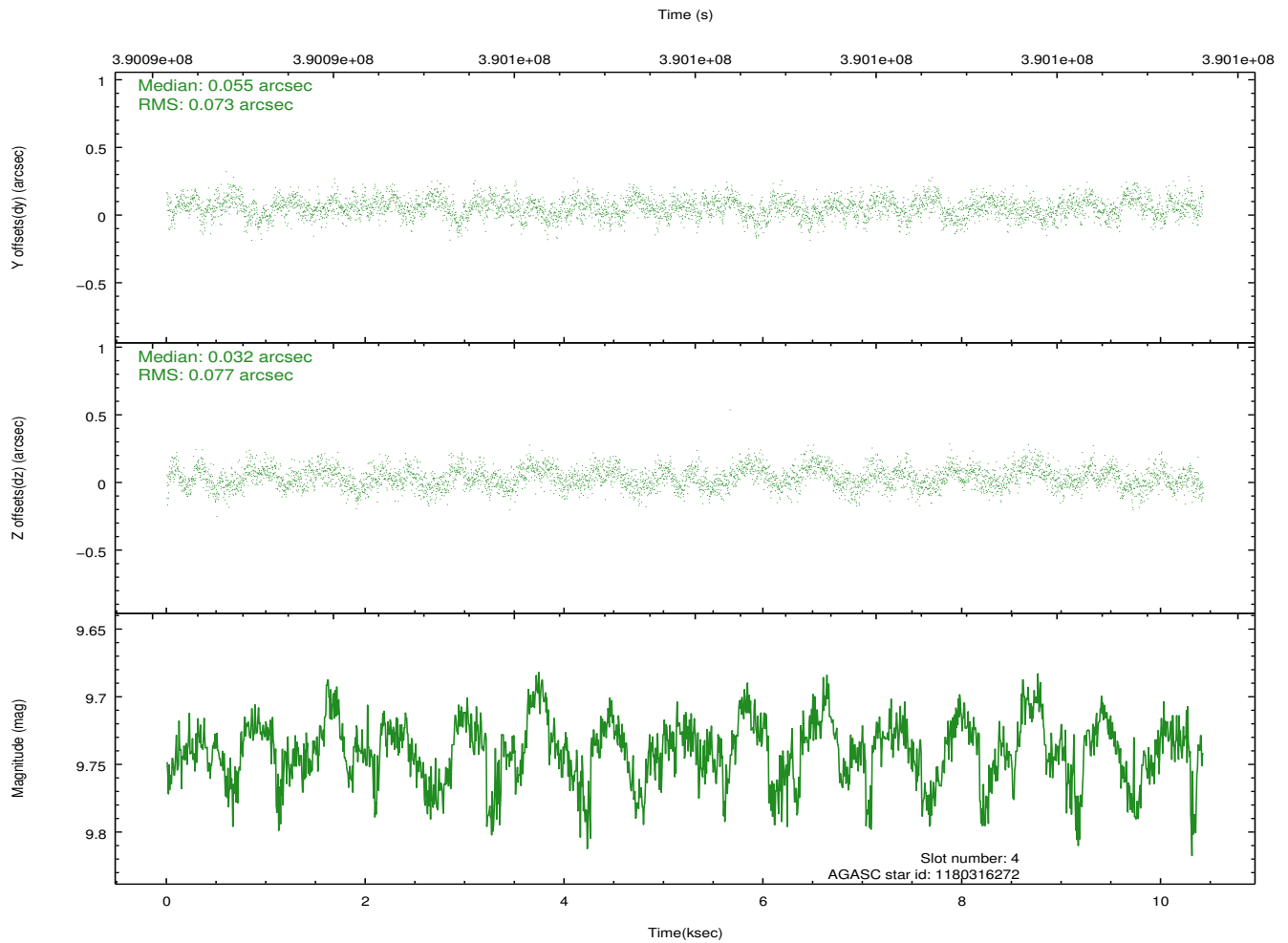
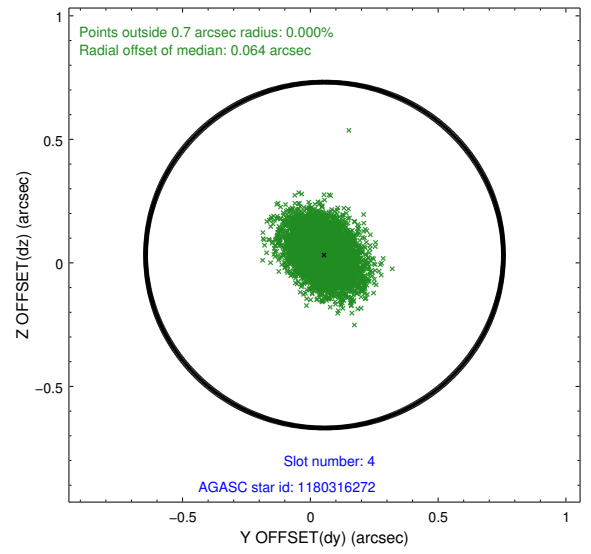
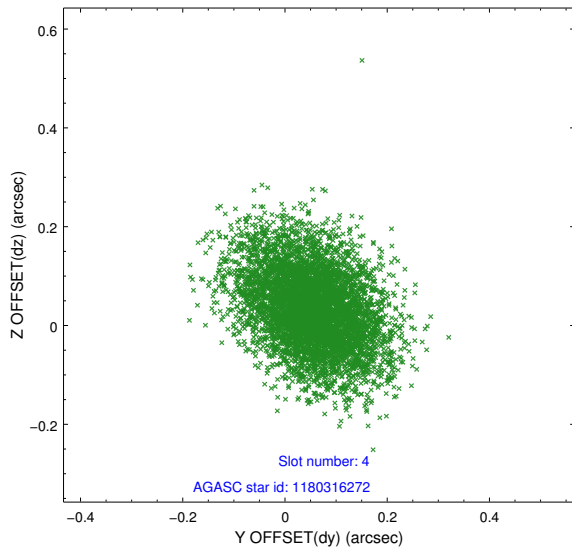
slot	status	id	mag	n_pts	med_dy	med_dz	dr1	dr2	ra	dec	mean_y	mean_z
0	FID	ACIS-I-1	7.02	2542	-0.001	-0.088	0.010	0.018	0.000000	0.000000	923.44	-839.62
1	FID	ACIS-I-4	6.94	2543	0.145	0.085	0.014	0.020	0.000000	0.000000	2143.88	1060.12
2	FID	ACIS-I-5	7.01	2543	-0.241	0.074	0.011	0.018	0.000000	0.000000	-1824.19	1058.47
3	GUIDE	1180303376	8.71	5077	0.042	-0.043	0.079	0.127	213.435748	-61.467916	-513.03	2121.28
4	GUIDE	1180316272	9.74	5082	0.055	0.032	0.112	0.186	212.637961	-61.369627	-1919.11	1931.07
5	GUIDE	1180828960	9.13	5079	0.063	0.018	0.110	0.183	214.129373	-62.709043	2212.28	-1606.67
6	GUIDE	1180850744	9.54	5072	0.049	0.166	0.129	0.208	212.559831	-62.378080	-648.52	-1473.24
7	GUIDE	1180829280	9.54	5060	-0.209	-0.169	0.094	0.156	213.199834	-61.923875	-274.21	447.73

## 2.4 Star Slots

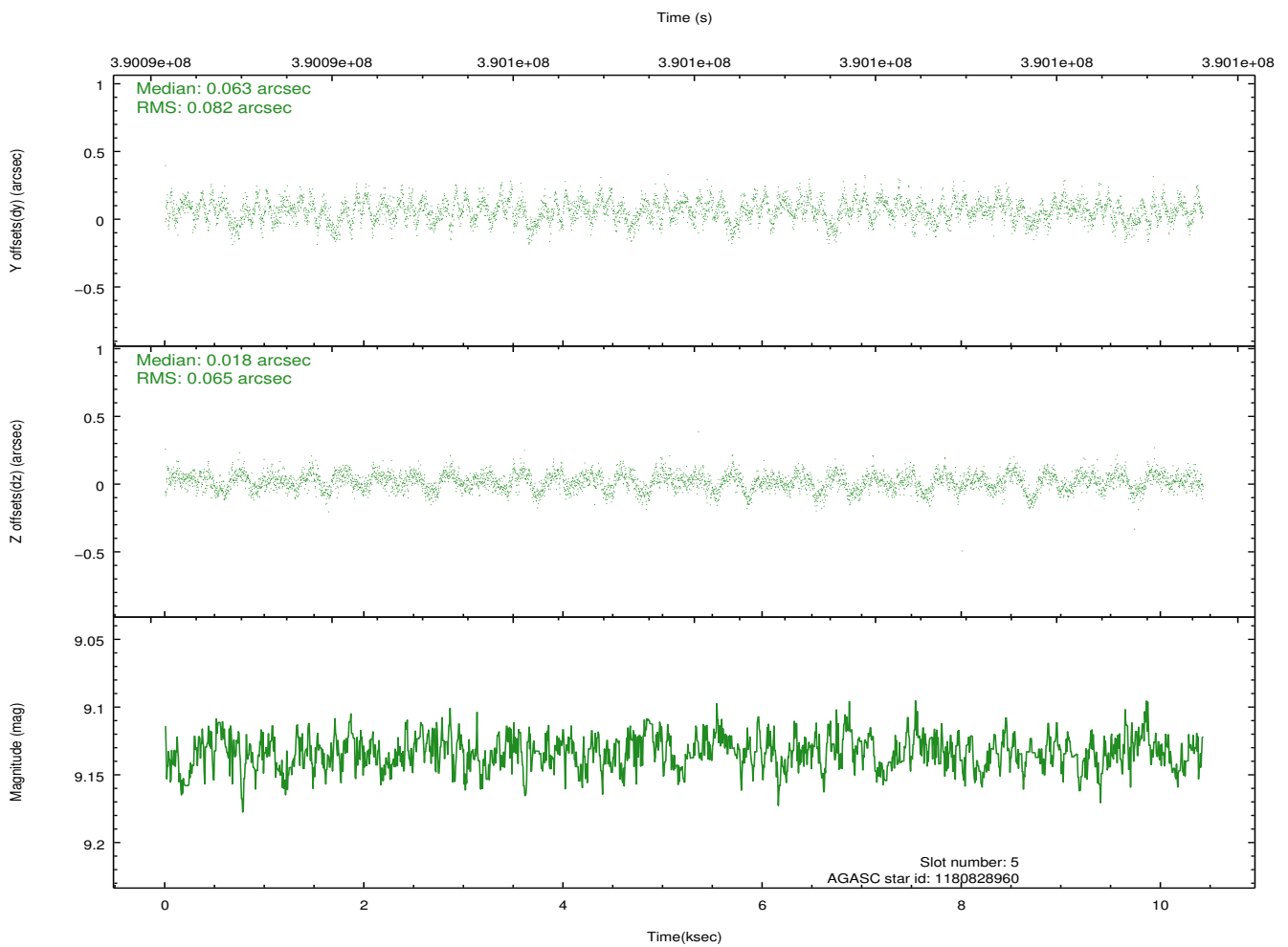
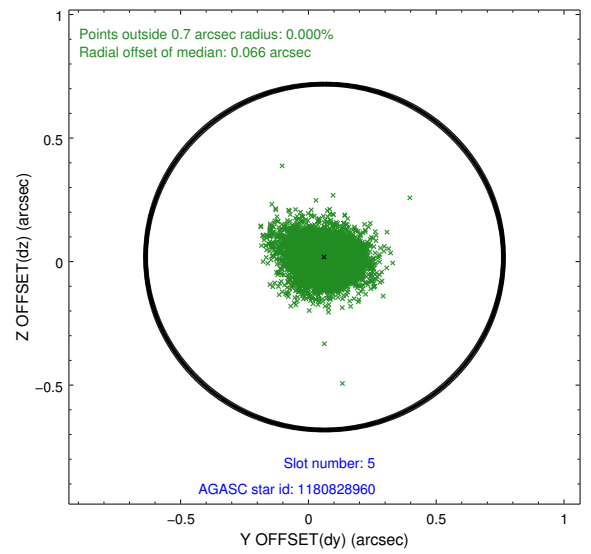
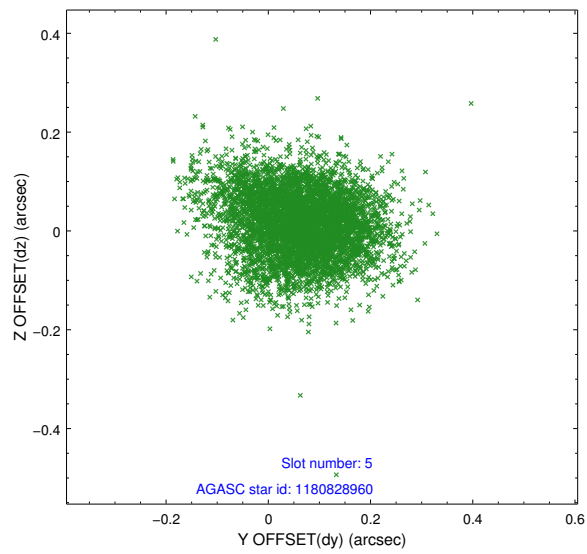
### 2.4.1 Slot 3



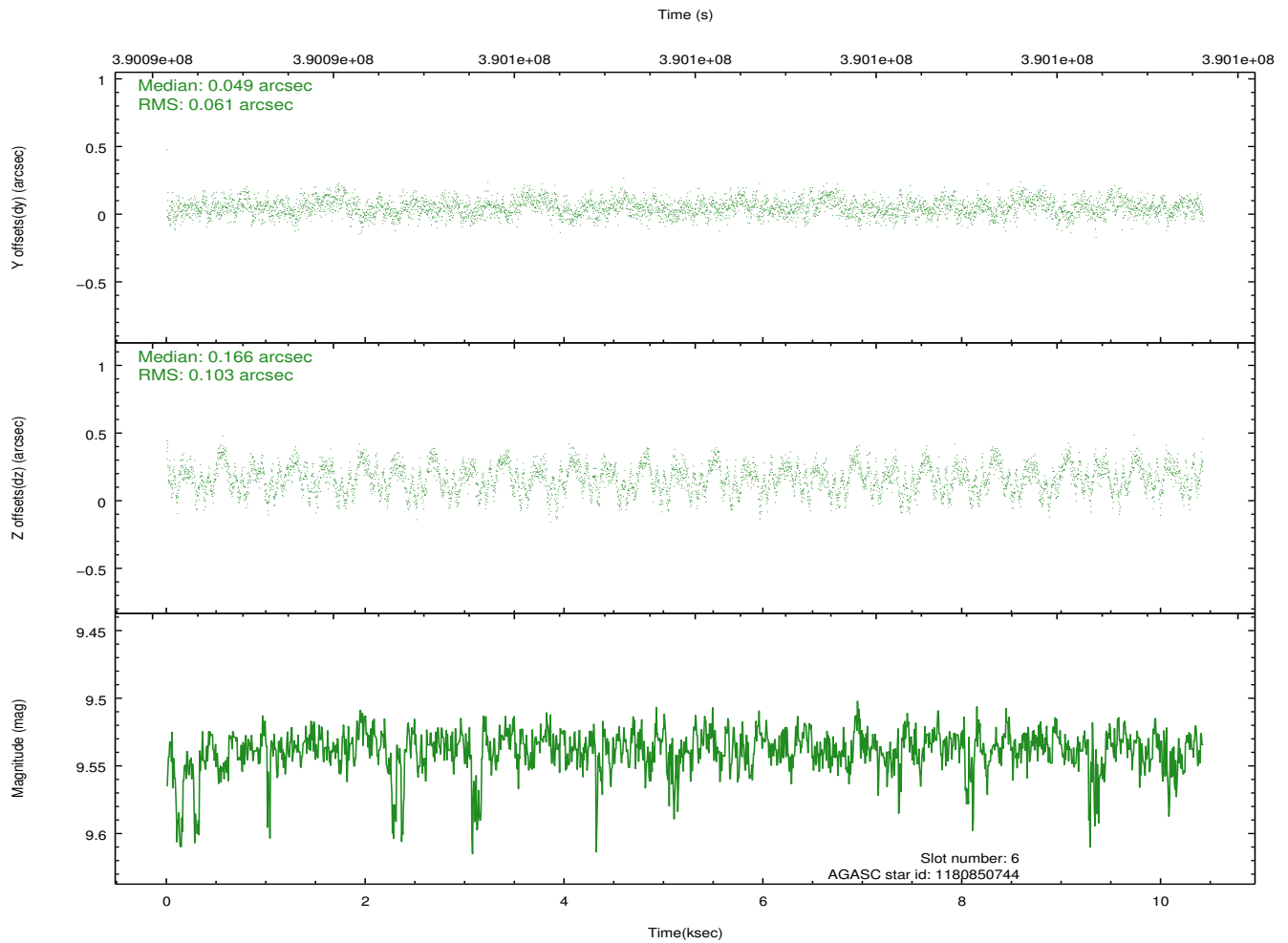
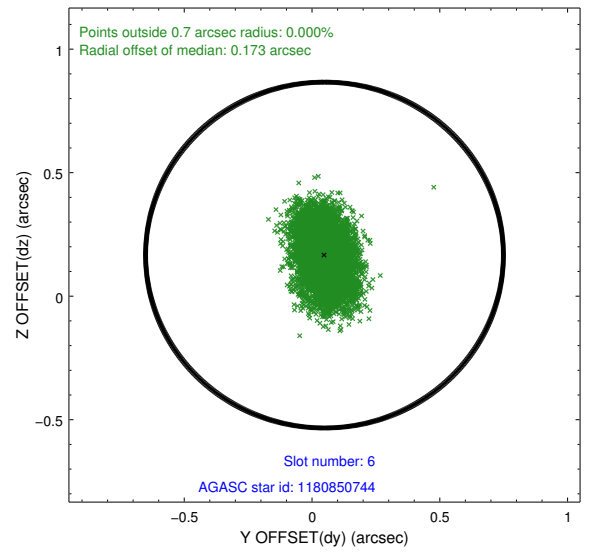
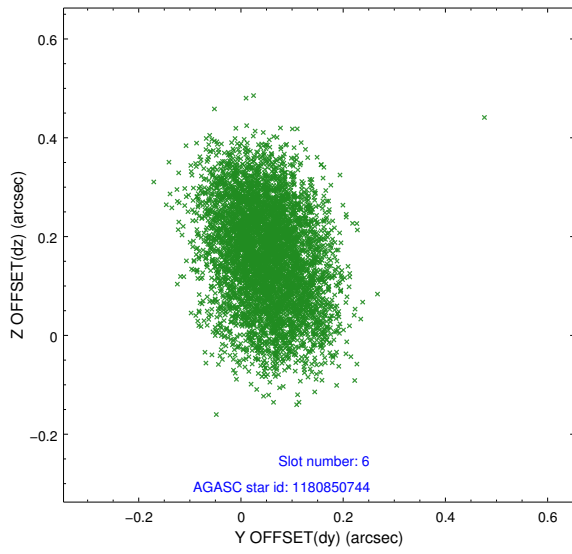
### 2.4.2 Slot 4



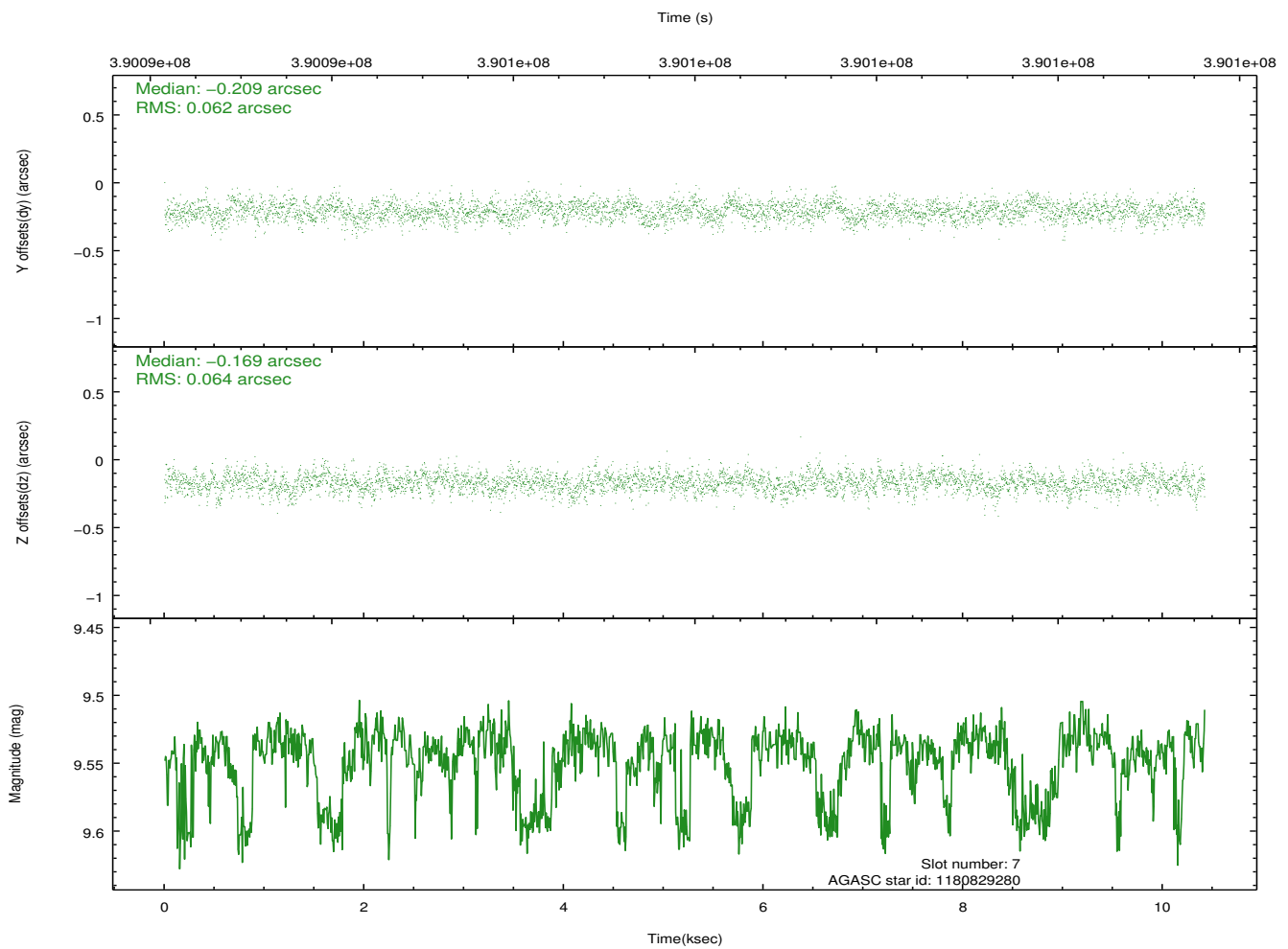
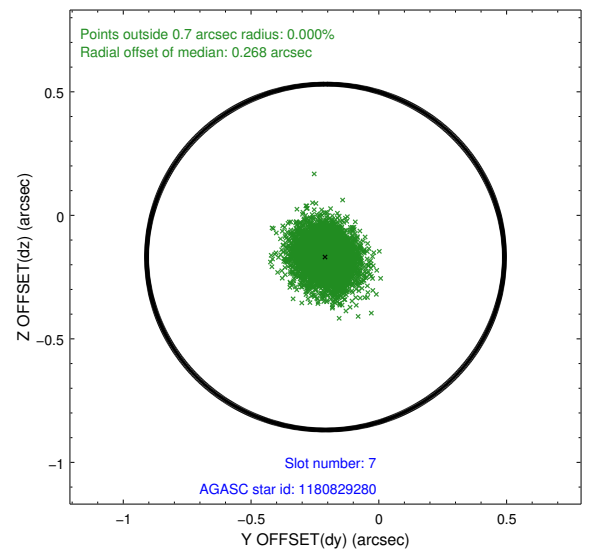
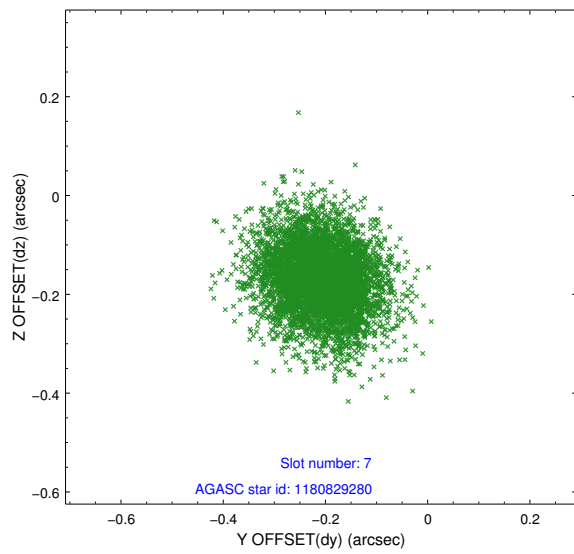
### 2.4.3 Slot 5



### 2.4.4 Slot 6

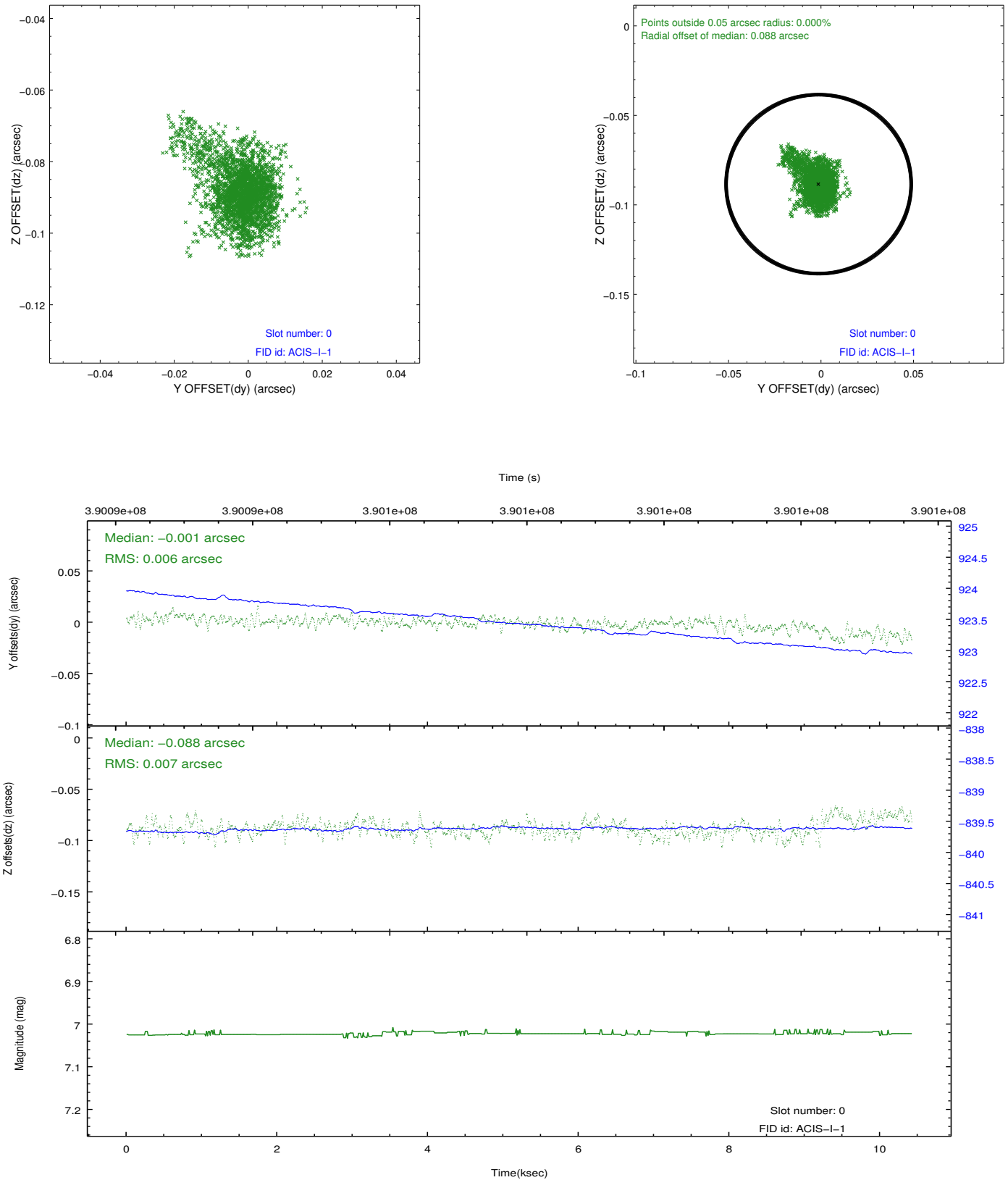


## 2.4.5 Slot 7

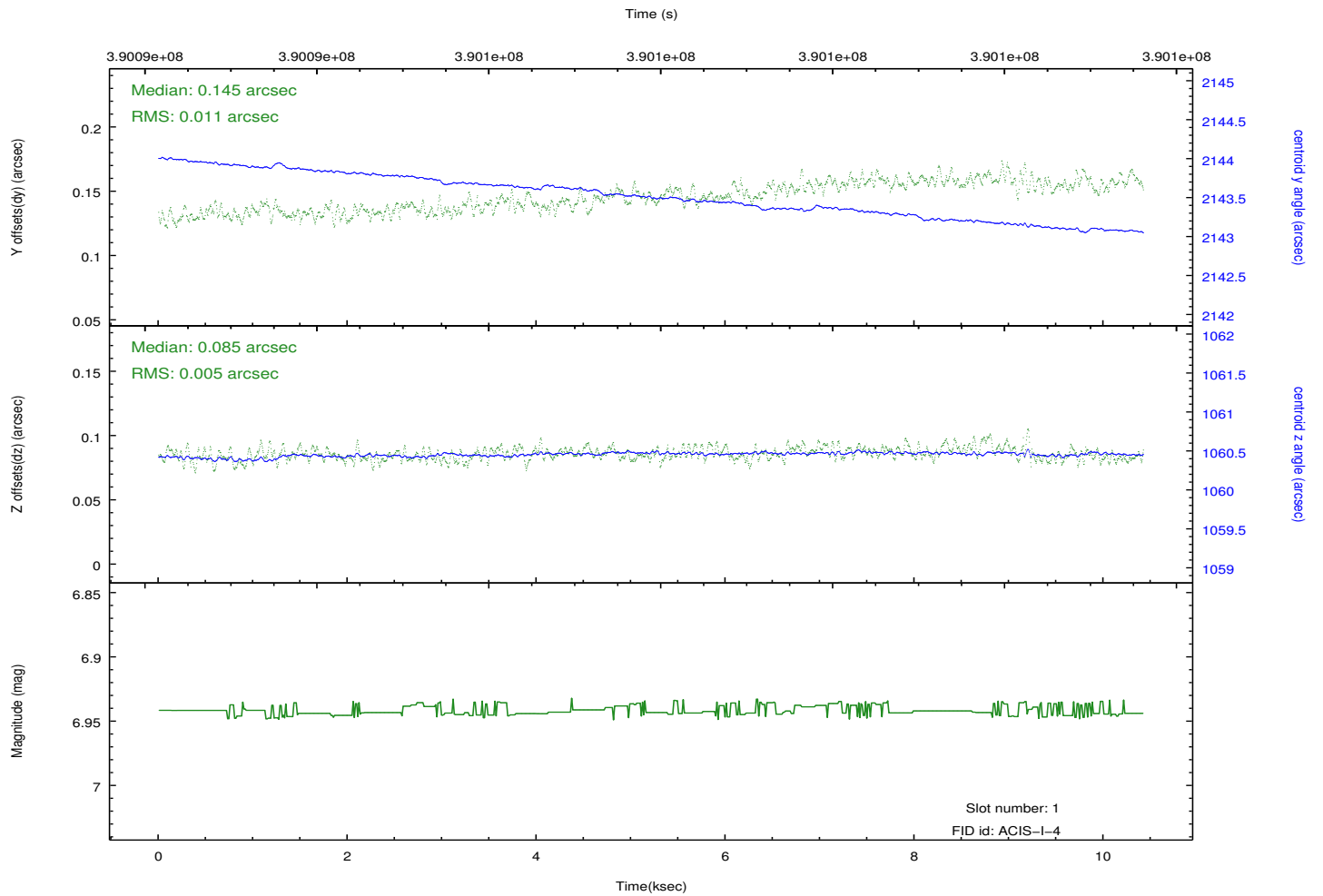
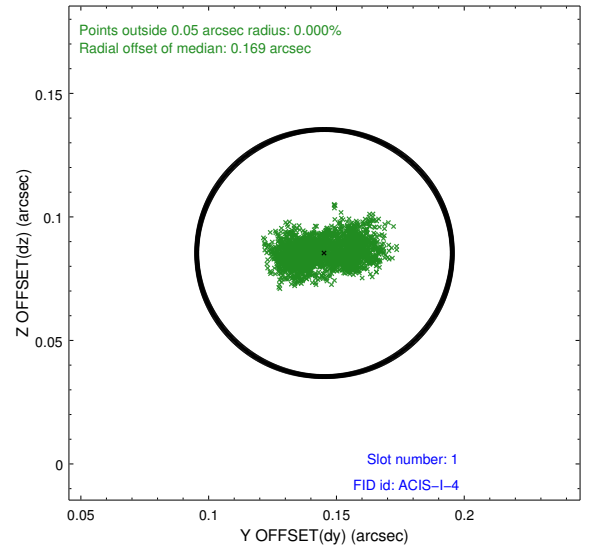
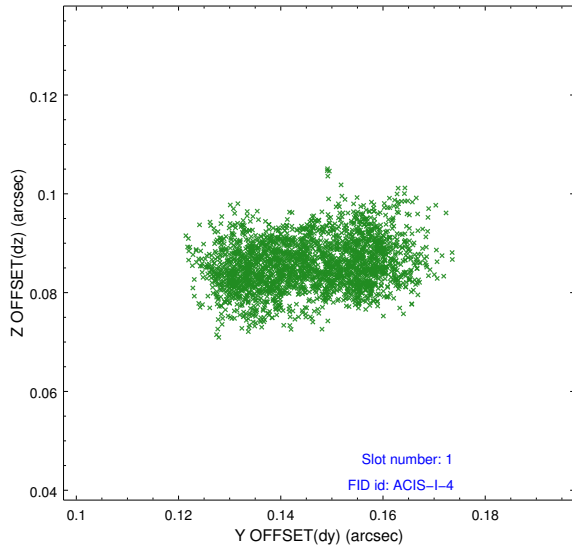


## 2.5 FID Slots

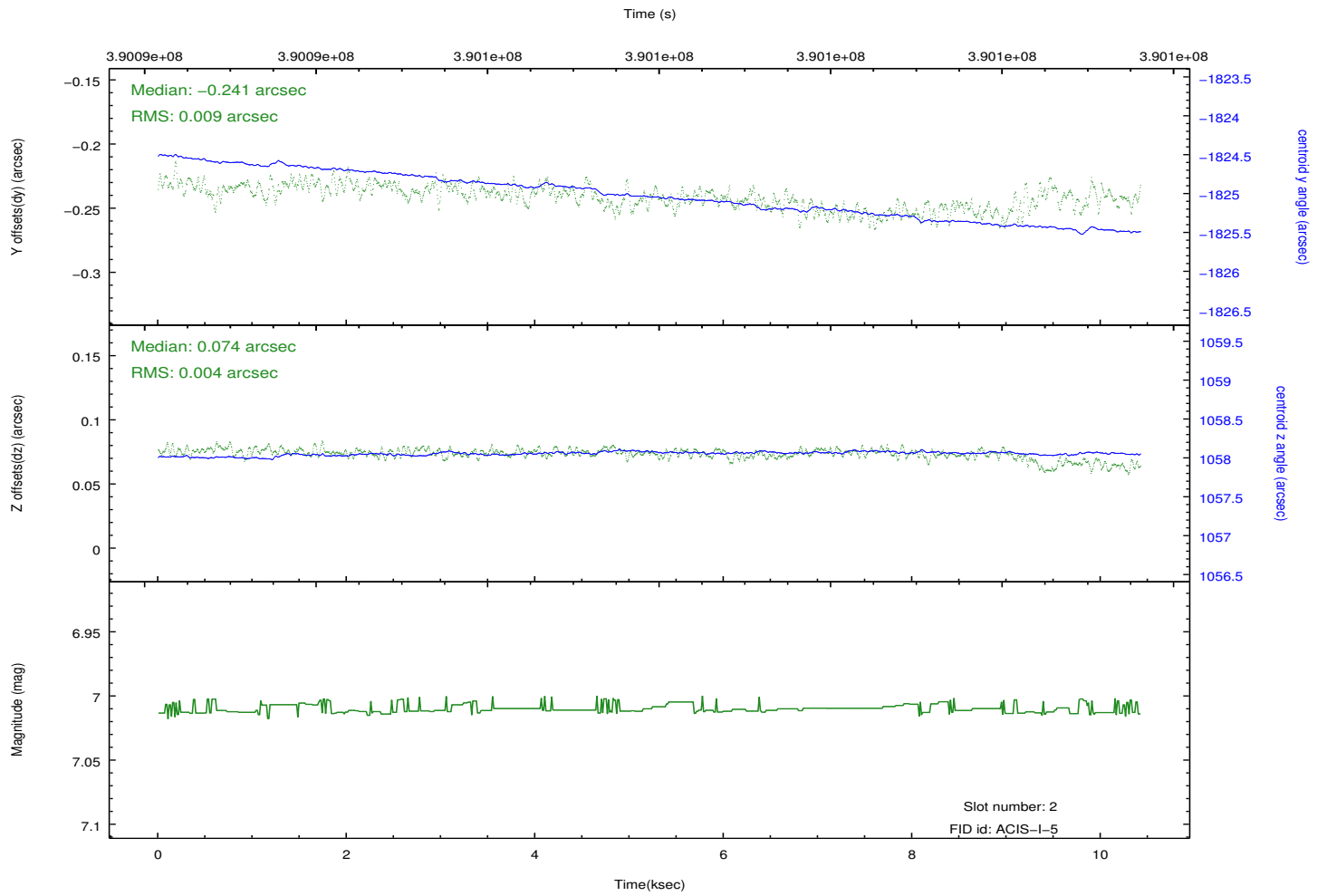
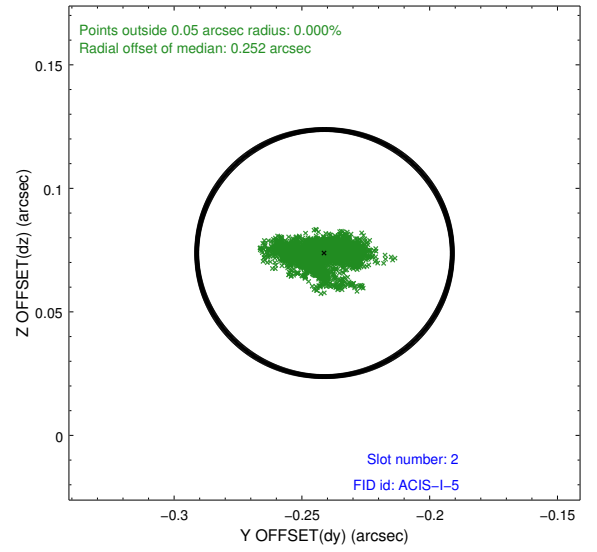
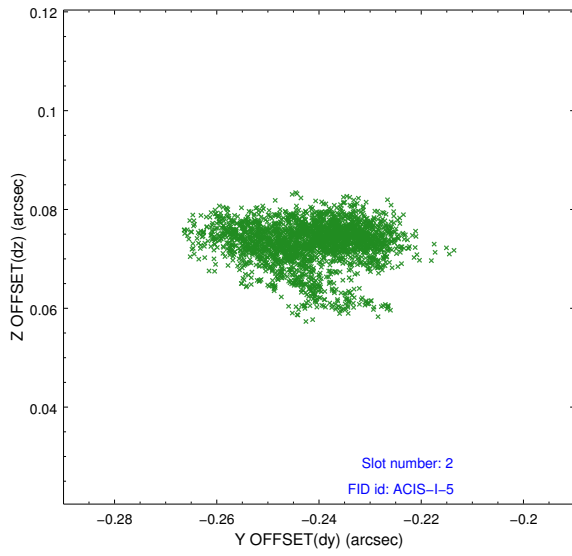
### 2.5.1 Slot 0



## 2.5.2 Slot 1



### 2.5.3 Slot 2



# A Summary

## A.1 Status

V&V Scientist	Beth Sundheim
V&V Date (YYYY-MM-DD)	2012.07.03
V&V Edition	1
V&V Disposition and Status	OK
V&V Charge Time	10.051199962616

## A.2 Comments