

V&V Reference Report

L2 ASCDS Version : 8.4.5

Observation 12024 - L2 Version 2
Chandra X-Ray Center

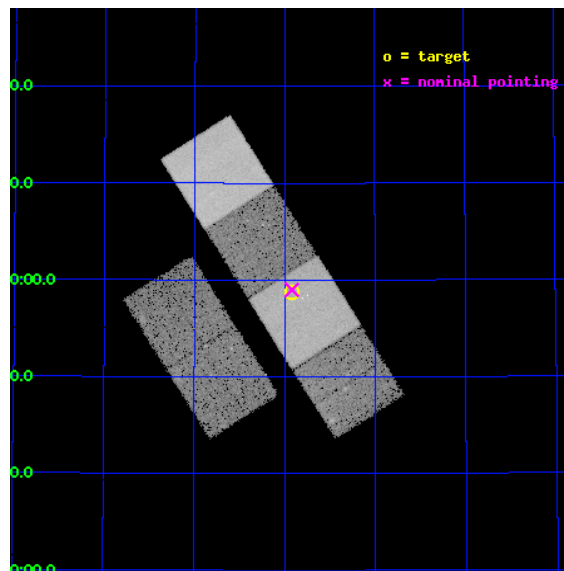
L2 Processing Date : Jun 17 2012

Contents

1	Front	2
2	OBI	3
2.1	OBI	3
2.1.1	Images	3
2.1.2	Bias	3
2.1.3	Parameters	4
2.1.4	Events	4
2.2	Compared Parameters	5
2.3	Aspect	6
2.4	Star Slots	9
2.4.1	Slot 3	9
2.4.2	Slot 4	10
2.4.3	Slot 5	11
2.4.4	Slot 6	12
2.4.5	Slot 7	13
2.5	FID Slots	14
2.5.1	Slot 0	14
2.5.2	Slot 1	15
2.5.3	Slot 2	16
A	Summary	17
A.1	Status	17
A.2	Comments	17

1 Front

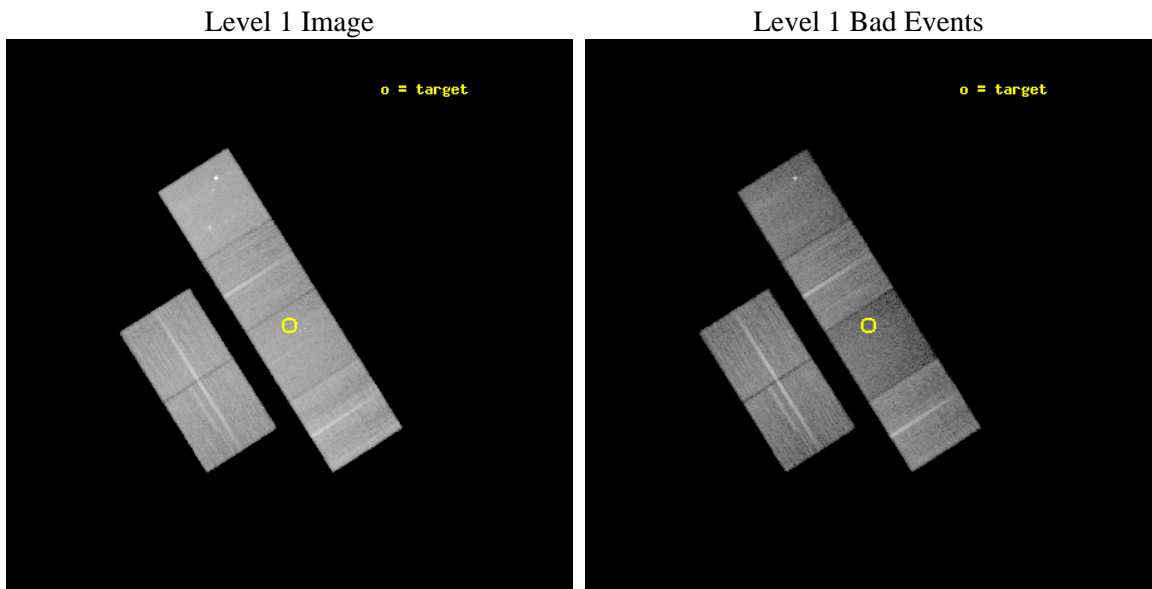
seq_num	501344	Sequence number
obs_id	12024	Observation id
title	Search for Long GRB Jet Breaks	Proposal title
observer	Professor Gordon Garmire	Principal investigator
object	GRB 091020	Source name
dtcycle	0	
cycle	P	events from which exps? Prim/Second/Both
ra_targ	175.73005	Observer's specified target RA [deg]
dec_targ	50.97839	Observer's specified target Dec [deg]
ra_nom	175.7301487428	Nominal RA [deg]
dec_nom	50.983250855195	Nominal Dec [deg]
roll_nom	57.656558921958	Nominal Roll [deg]
revision	2	Processing version of data
ontime	20150.399924994	Sum of GTIs [s]
livetime	19895.243428029	Livetime [s]
ontime2	20147.158894718	Sum of GTIs [s]
ontime3	20140.67689395	Sum of GTIs [s]
ontime5	20150.399924994	Sum of GTIs [s]
ontime6	20150.399924994	Sum of GTIs [s]
ontime7	20150.399924994	Sum of GTIs [s]
ontime8	20147.15905416	Sum of GTIs [s]
l2events	237893	Number of level 2 events



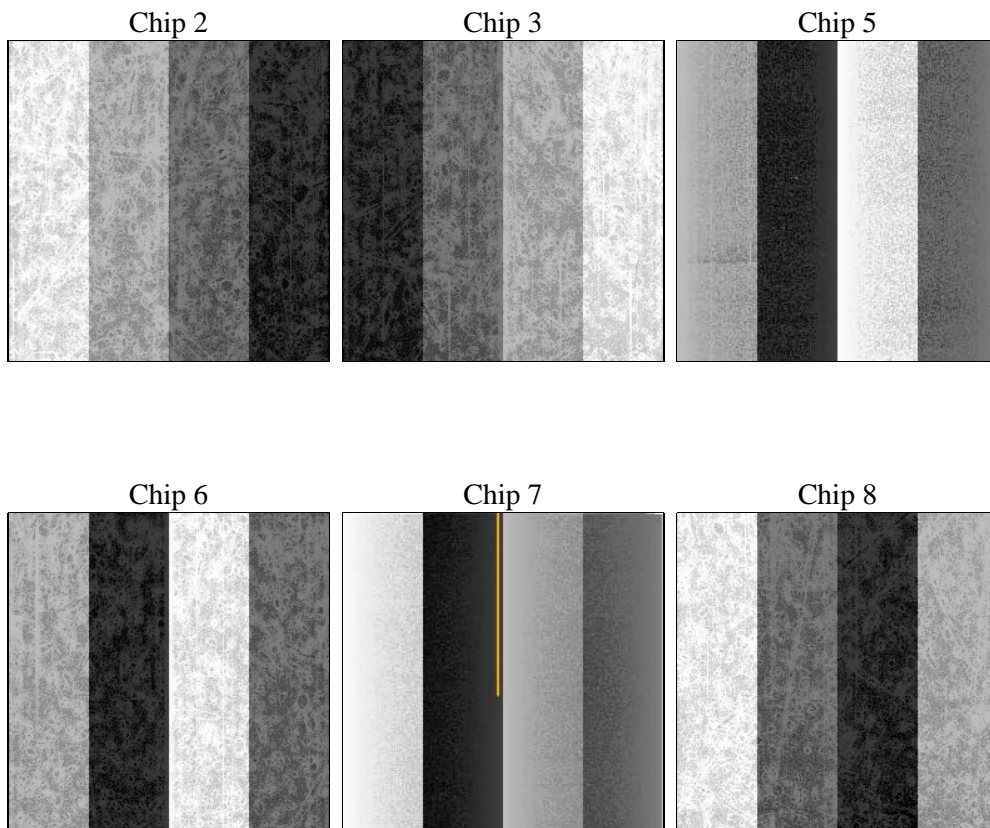
2 OBI

2.1 OBI

2.1.1 Images



2.1.2 Bias



2.1.3 Parameters

obi_num	1	Obi number	sched_exp_time	20000.000000	[s] Scheduled observation exposure time
ascdsver	8.4.5	Processing system revision	ontime	20150.399924994	Sum of GTIs [s]
caldsver	4.4.10	 	ontime2	20147.158894718	Sum of GTIs [s]
date	2012-06-17T05:20:38	Date and time of file creation	ontime3	20140.67689395	Sum of GTIs [s]
revision	2	Processing version of data	ontime5	20150.399924994	Sum of GTIs [s]
			ontime6	20150.399924994	Sum of GTIs [s]
			ontime7	20150.399924994	Sum of GTIs [s]
			ontime8	20147.15905416	Sum of GTIs [s]
			l1events	1067706	Number of level 1 events

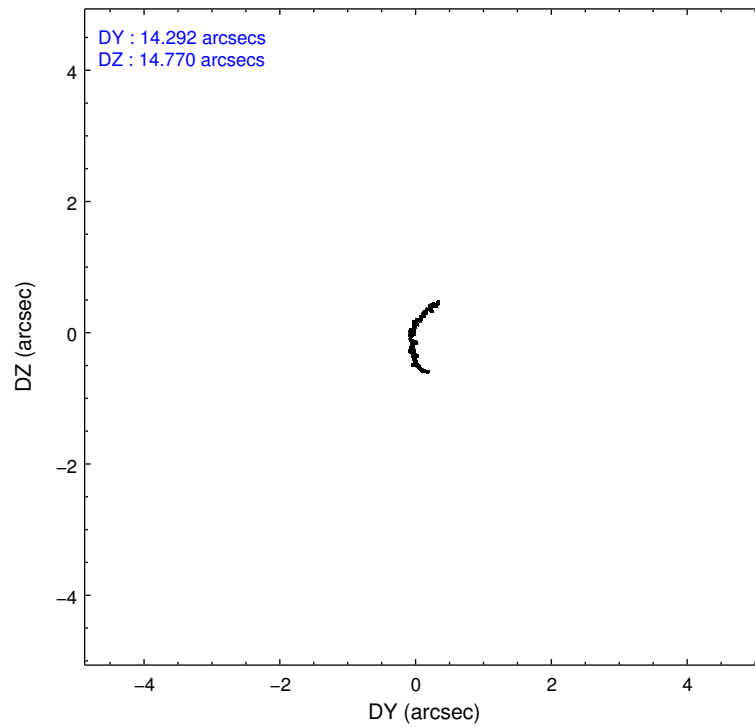
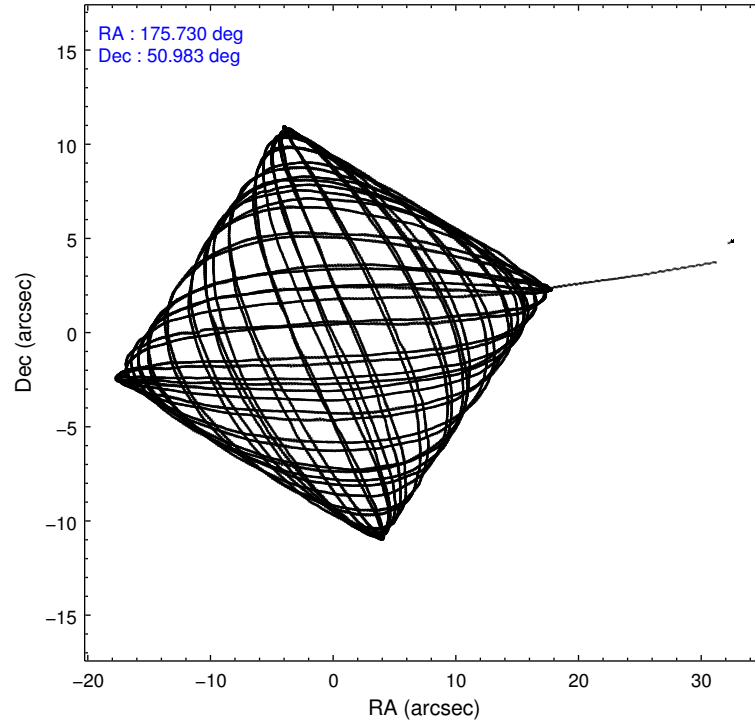
2.1.4 Events

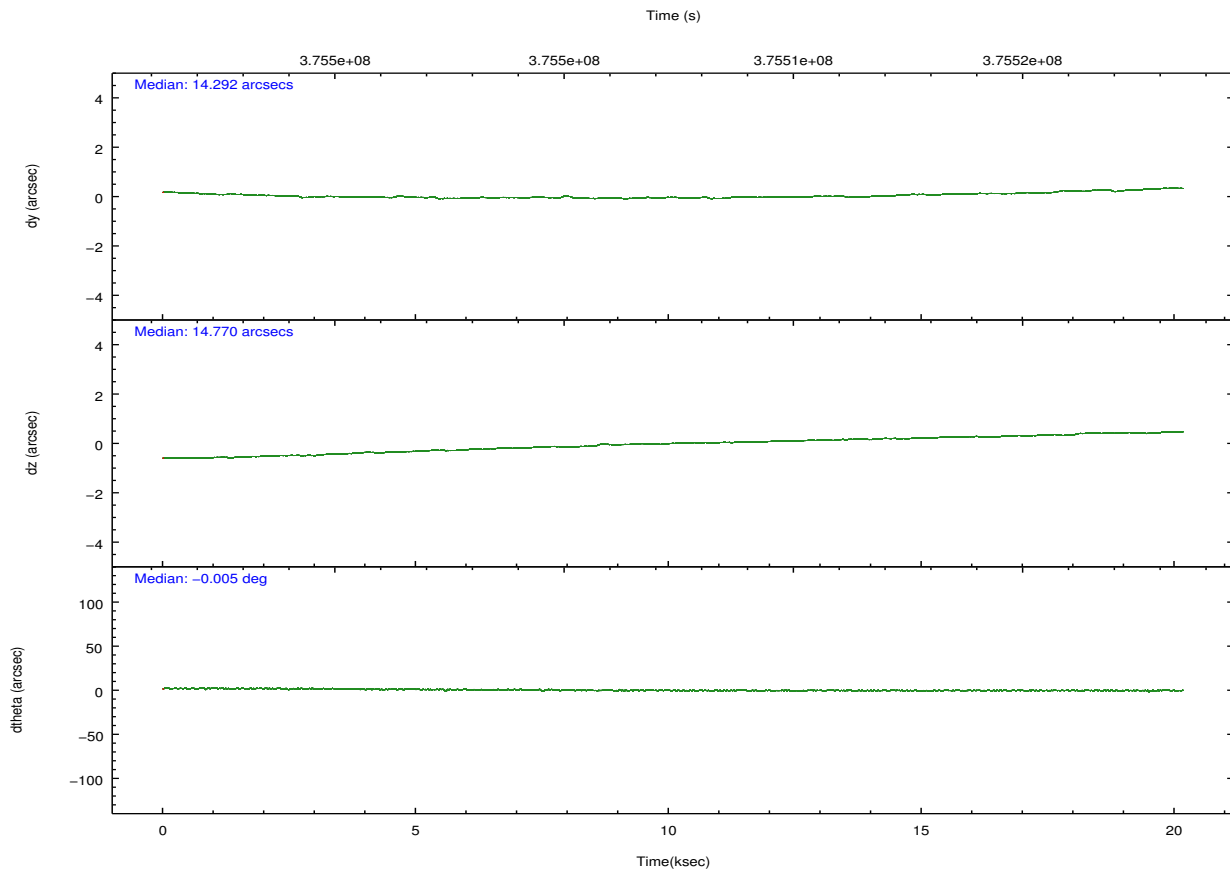
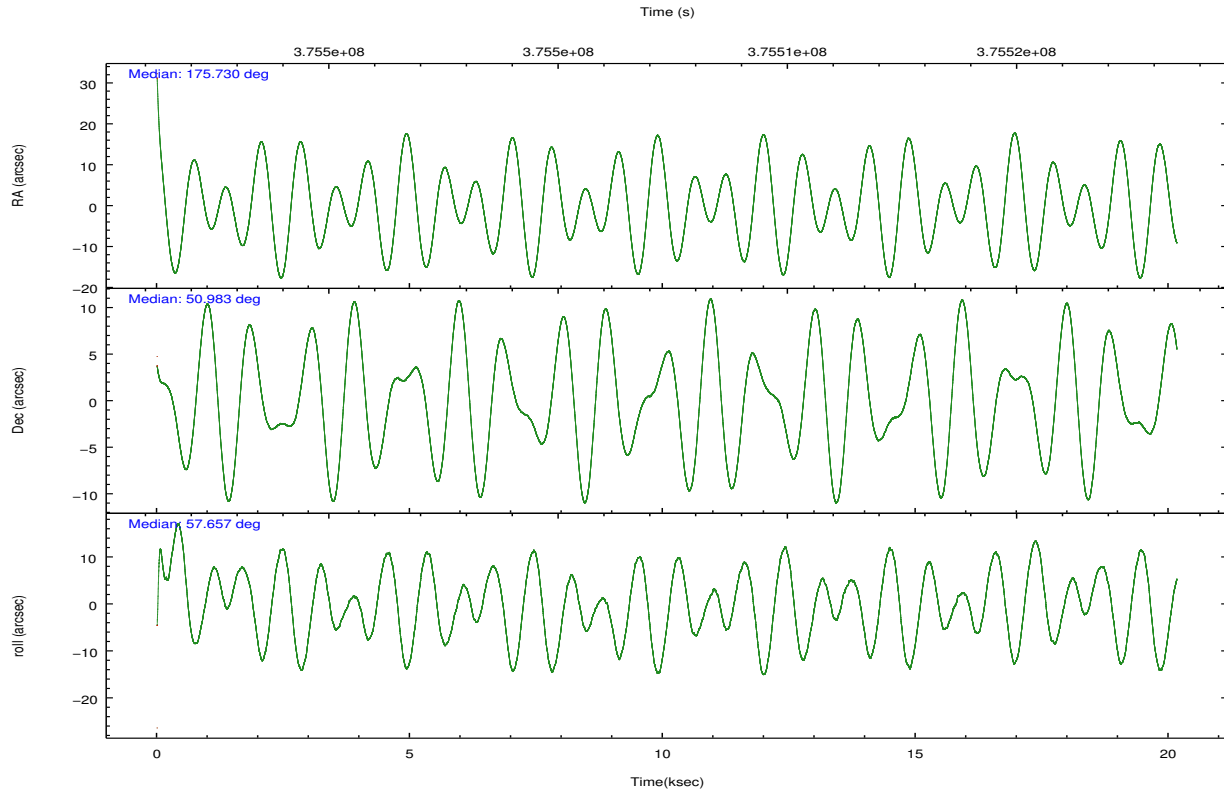
	ccd 2	ccd 3	ccd 5	ccd 6	ccd 7	ccd 8		ccd 2	ccd 3	ccd 5	ccd 6	ccd 7	ccd 8
level 1 events	172910	156228	212689	160368	160902	204609	grade 0 events	5801	5748	11898	6131	8202	14673
rejected events	156937	141085	100141	143599	81792	151515		3%	3%	5%	3%	5%	7%
rejected %	90%	90%	47%	89%	50%	74%	grade 1 events	112	103	1558	94	206	181
								0%	0%	0%	0%	0%	0%
							grade 2 events	3909	3233	35018	3703	16977	12585
								2%	2%	16%	2%	10%	6%
							grade 3 events	1654	1660	4652	1817	7344	6058
								0%	1%	2%	1%	4%	2%
							grade 4 events	1689	1661	4576	1717	7289	5433
								0%	1%	2%	1%	4%	2%
							grade 5 events	4791	5715	16442	5777	16835	8834
								2%	3%	7%	3%	10%	4%
							grade 6 events	2923	2847	56419	3403	39310	14432
								1%	1%	26%	2%	24%	7%
							grade 7 events	152031	135261	82126	137726	64739	142413
								87%	86%	38%	85%	40%	69%

2.2 Compared Parameters

Parameter	Planned	Actual	Parameter	Planned	Actual
Instrument	ACIS	ACIS	Obspar format version number	7	7
Detector	ACIS-235678	ACIS-235678	Obspar file type	PREDICTED	ACTUAL
Grating	NONE	NONE	Obspar update status	NONE	UPDATED
Data mode	VFAINT	VFAINT	CCD I0 on	N	N
Observation mode	POINTING	POINTING	CCD I1 on	N	N
[deg] Pointing RA	175.728964	175.7301487428027	CCD I2 on	O2	Y
[deg] Pointing Dec	50.955909	50.98325085519529	CCD I3 on	O3	Y
[deg] Pointing Roll	57.500847	57.6565589219581	CCD S0 on	N	N
[mm] SIM focus pos	-0.684267	-0.6828225247311905	CCD S1 on	O1	Y
[mm] SIM defocus	0	0.001444936568705701	CCD S2 on	O5	Y
[mm] SIM translation stage pos	-190.132523	-190.1425803651734	CCD S3 on	Y	Y
[mm] SIM translation stage offset	0	0.01005778216563158	CCD S4 on	O4	Y
[s] Observation start time (MET)	375497457.184000	375496394.98789	CCD S5 on	N	N
Observation start date	2009-11-25T00:49:51	2009-11-25T00:33:14	Number of optional ACIS chips dropped	0	0
[s] Observation end time (MET)	375517457.184000	375518242.35149	On-chip summing requested	N	N
Observation end date	2009-11-25T06:23:11	2009-11-25T06:37:22	Subarray requested	NONE	NONE
Read mode	TIMED	TIMED	Alternating exposures requested	N	N
			[s] Primary exposure time	0.000000	3.2

2.3 Aspect



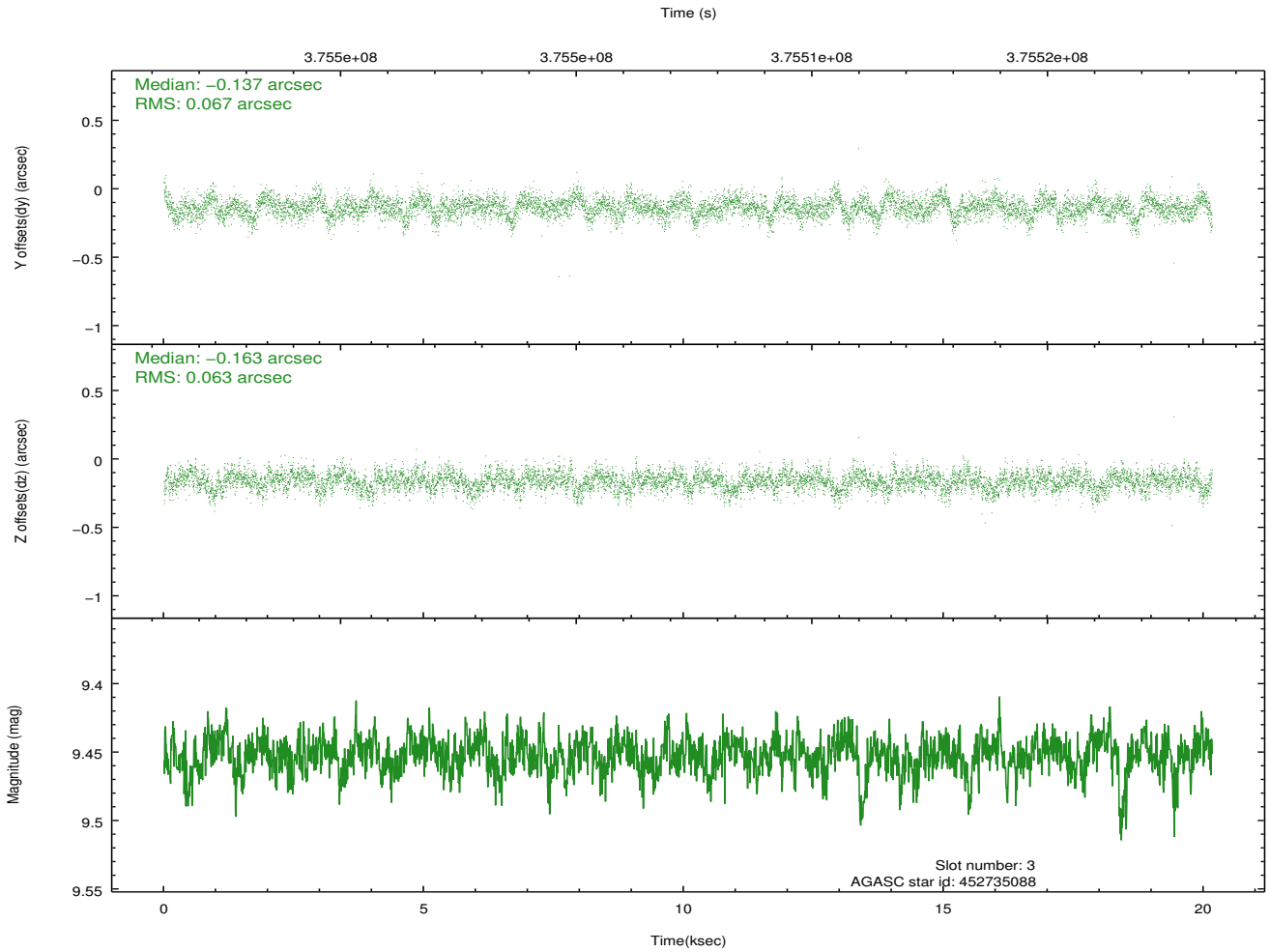
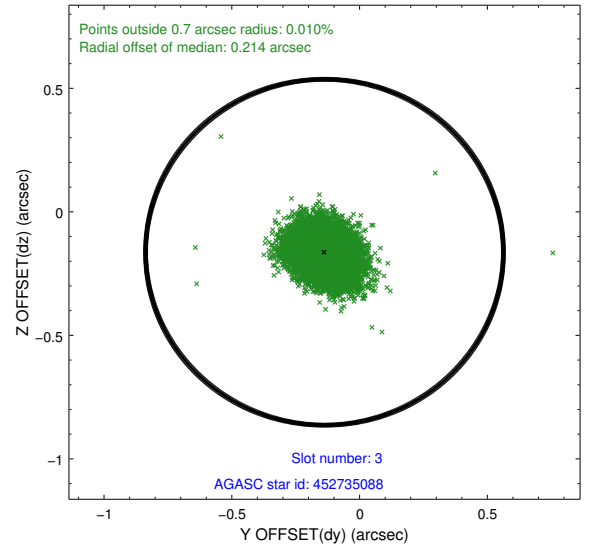
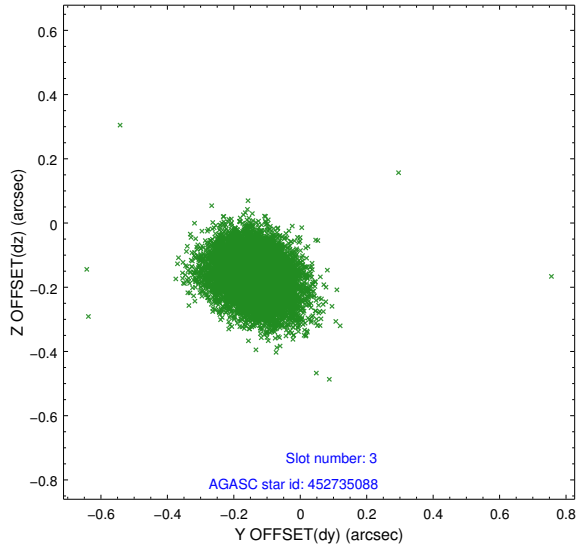


Slot Statistics

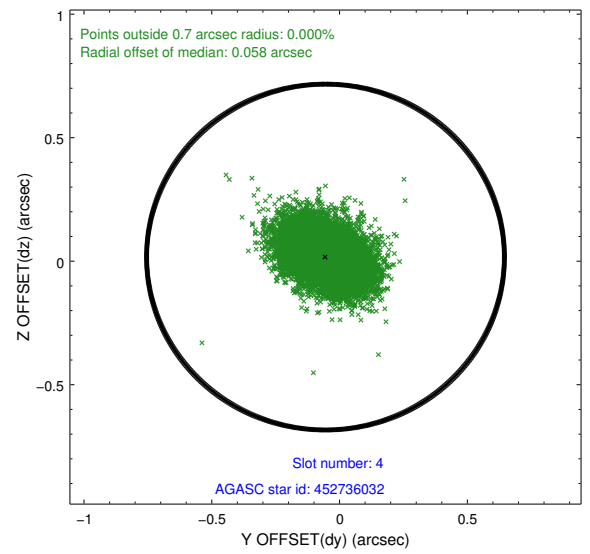
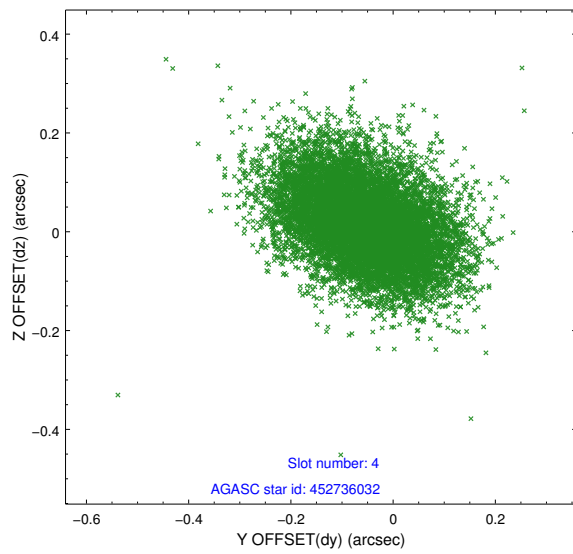
slot	status	id	mag	n_pts	med_dy	med_dz	dr1	dr2	ra	dec	mean_y	mean_z
0	FID	ACIS-S-2	6.96	4919	-0.087	-0.050	0.012	0.020	0.000000	0.000000	-767.35	-1736.11
1	FID	ACIS-S-4	7.05	4919	0.235	0.056	0.007	0.012	0.000000	0.000000	2146.14	172.32
2	FID	ACIS-S-5	7.08	4918	-0.179	0.004	0.011	0.018	0.000000	0.000000	-1820.07	166.11
3	GUIDE	452735088	9.45	9815	-0.137	-0.163	0.095	0.158	176.087412	51.094482	858.28	-414.16
4	GUIDE	452736032	9.81	9701	-0.055	0.017	0.124	0.204	176.666602	51.160729	1771.30	-1381.62
5	GUIDE	452736224	9.05	9832	-0.120	0.070	0.114	0.189	176.764586	50.971809	1323.65	-1941.14
6	GUIDE	452736584	8.00	9834	-0.026	0.311	0.064	0.103	176.535690	50.563566	-190.89	-2308.83
7	GUIDE	452738872	9.29	9824	0.335	-0.229	0.100	0.161	175.827129	50.610480	-927.29	-857.24

2.4 Star Slots

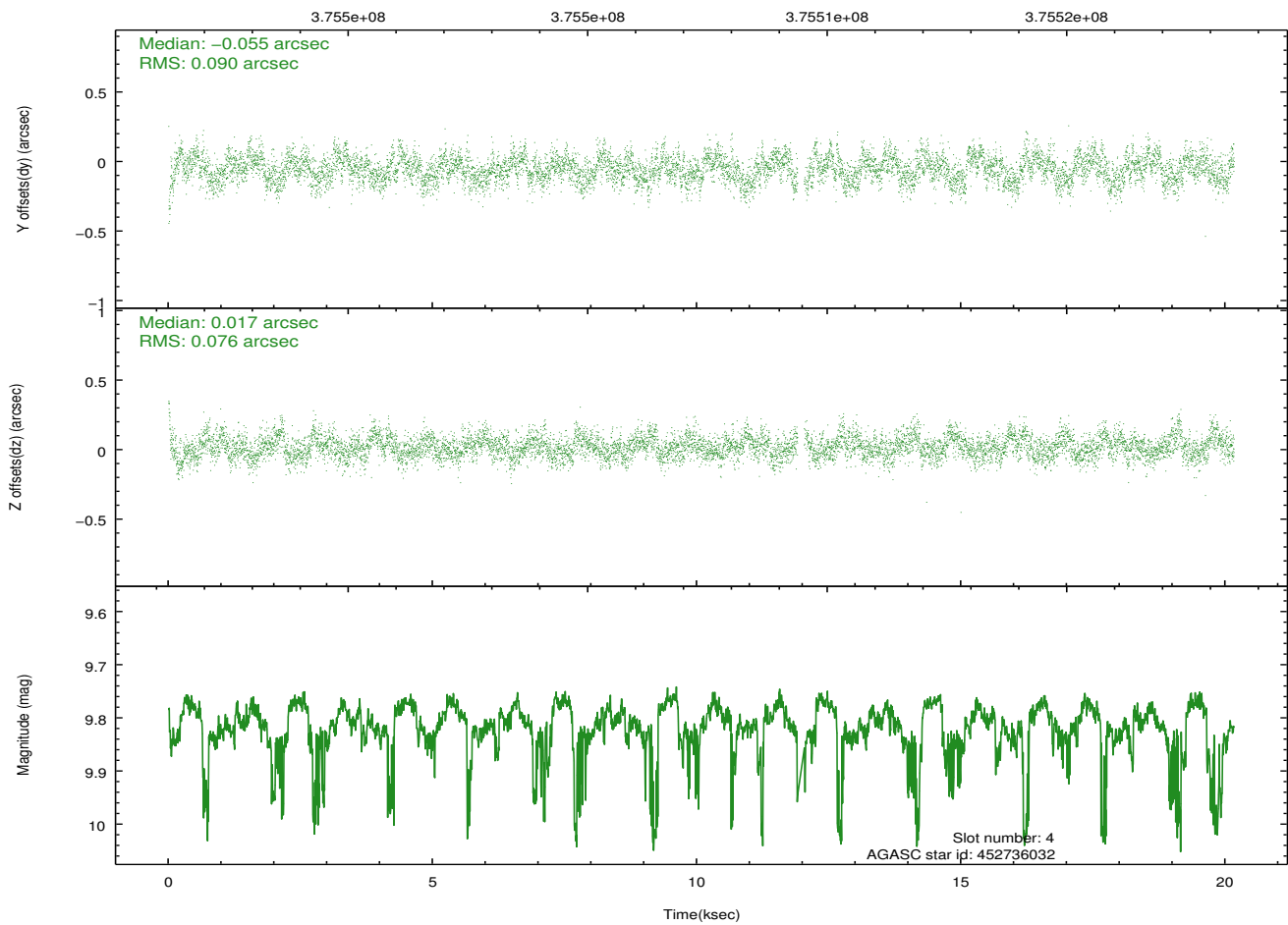
2.4.1 Slot 3



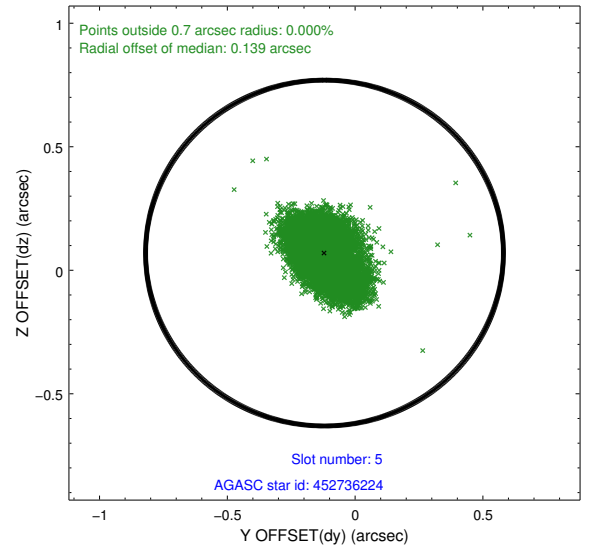
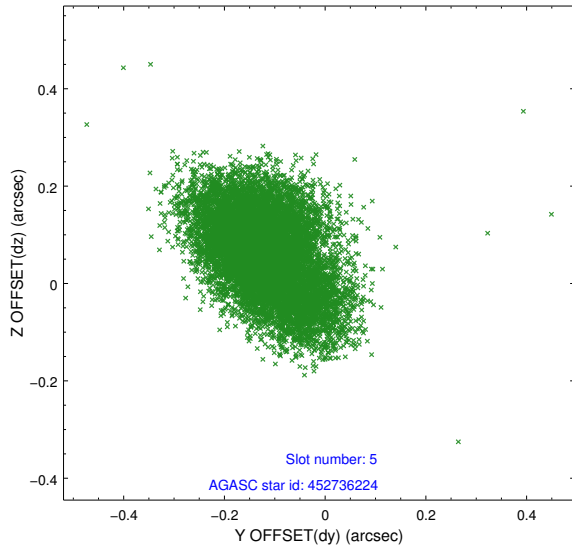
2.4.2 Slot 4



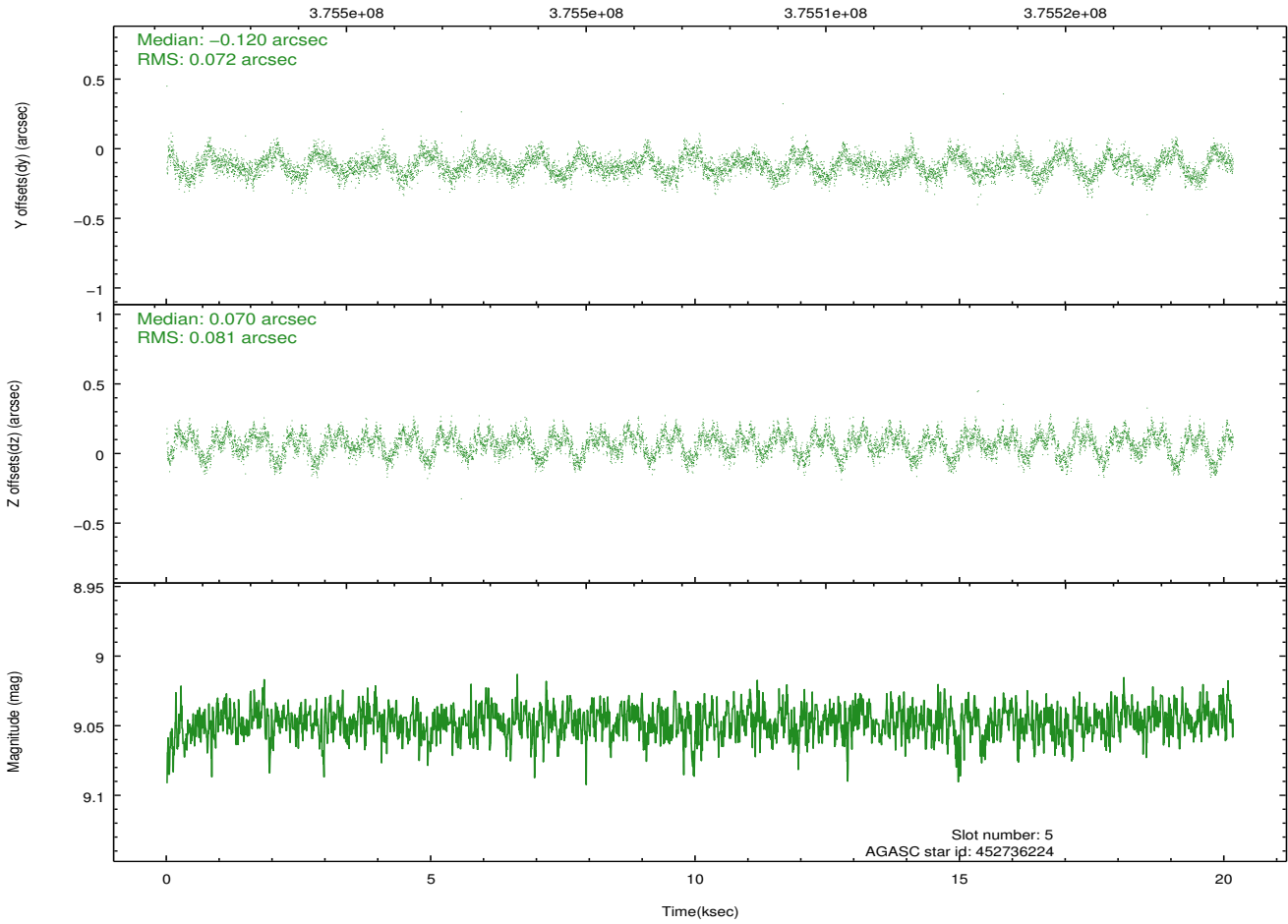
Time (s)



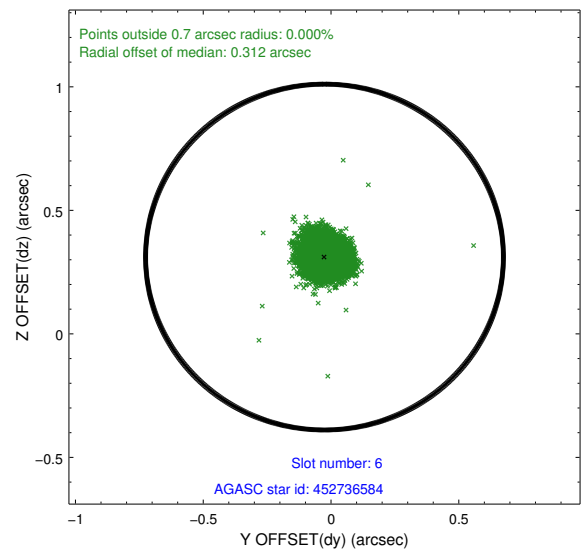
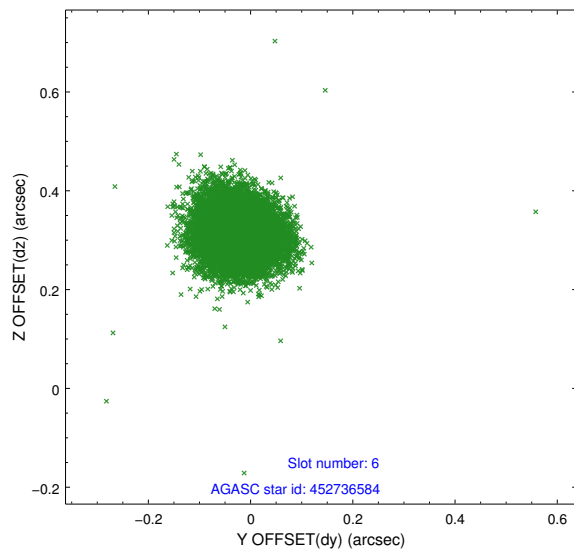
2.4.3 Slot 5



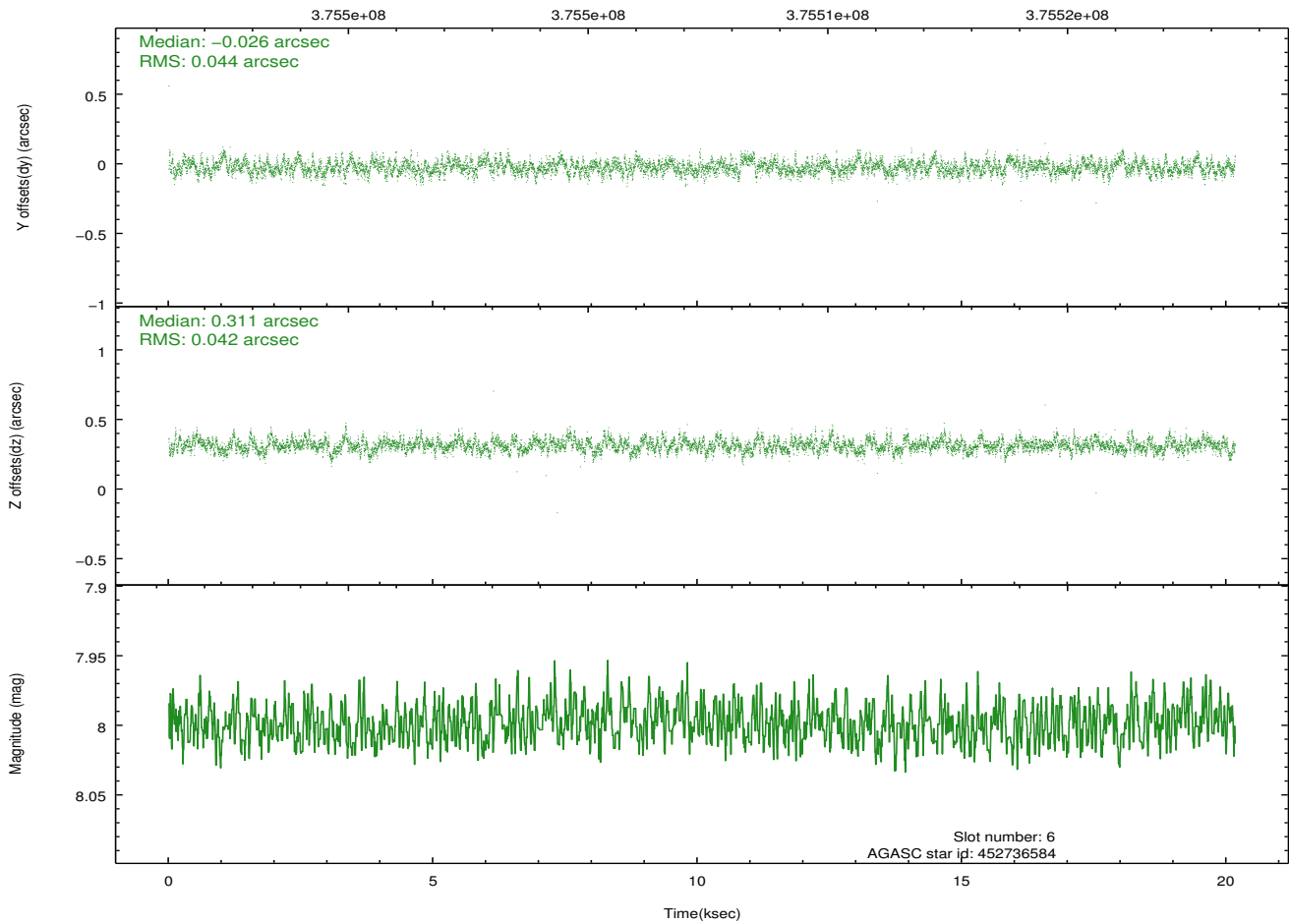
Time (s)



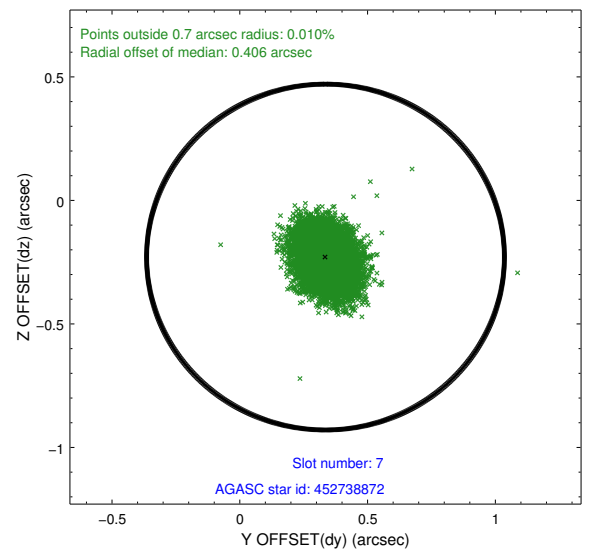
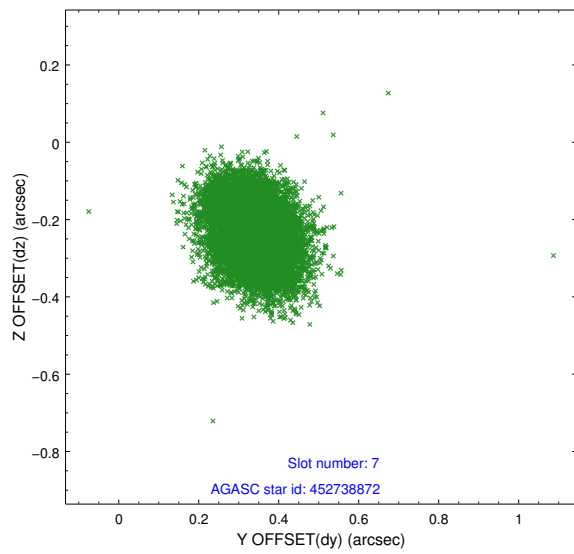
2.4.4 Slot 6



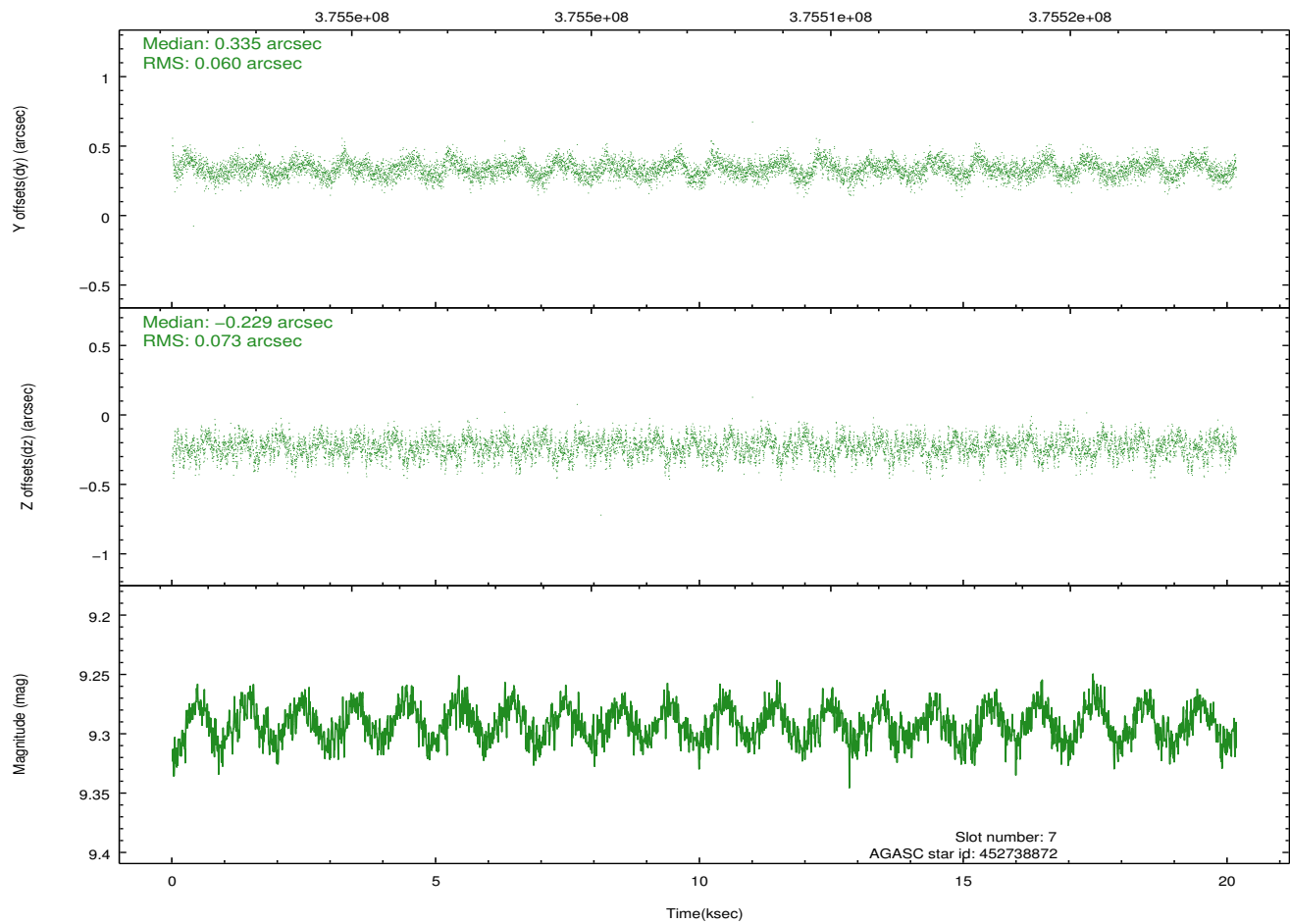
Time (s)



2.4.5 Slot 7

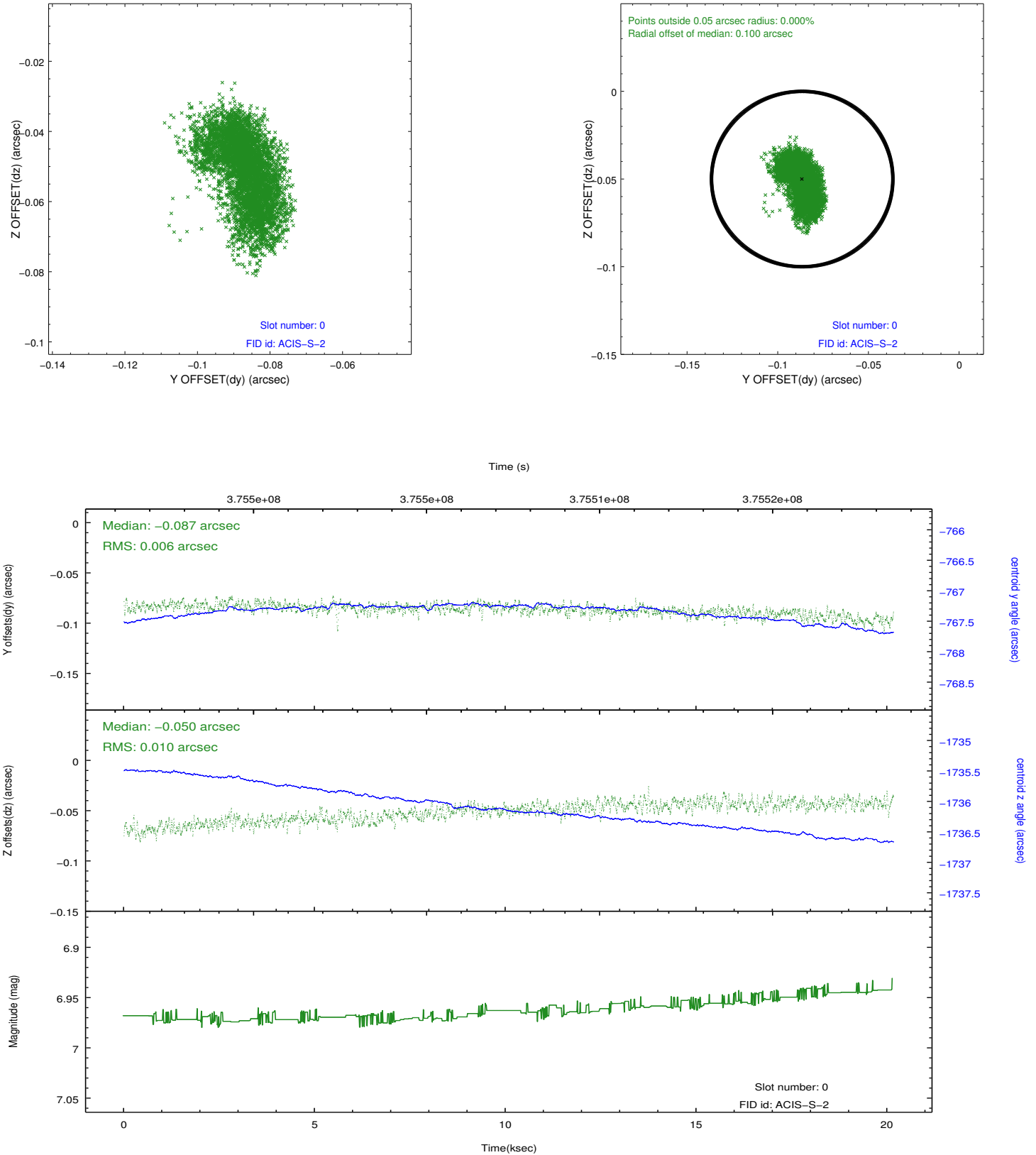


Time (s)

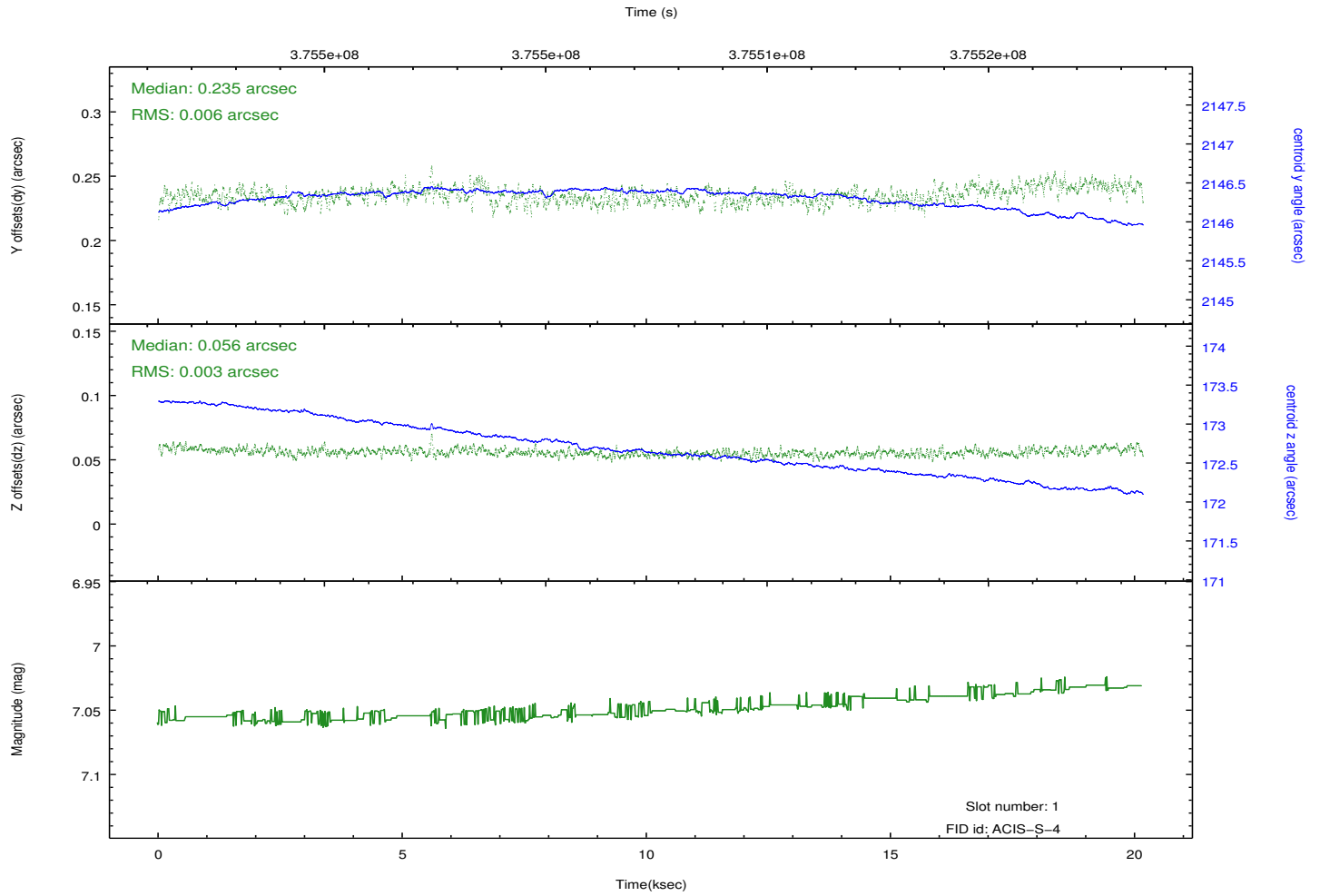
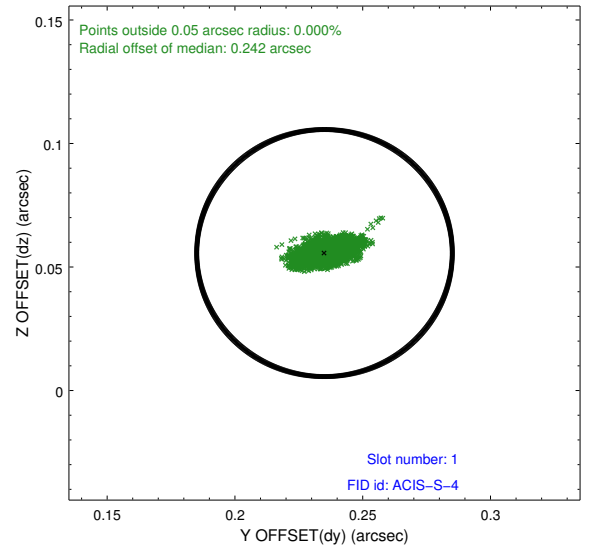
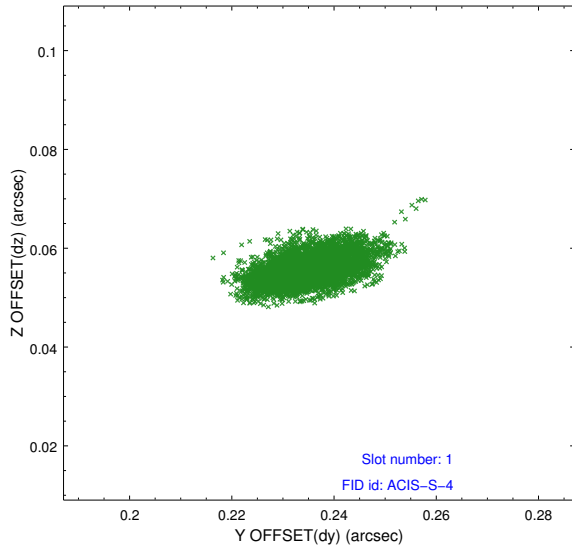


2.5 FID Slots

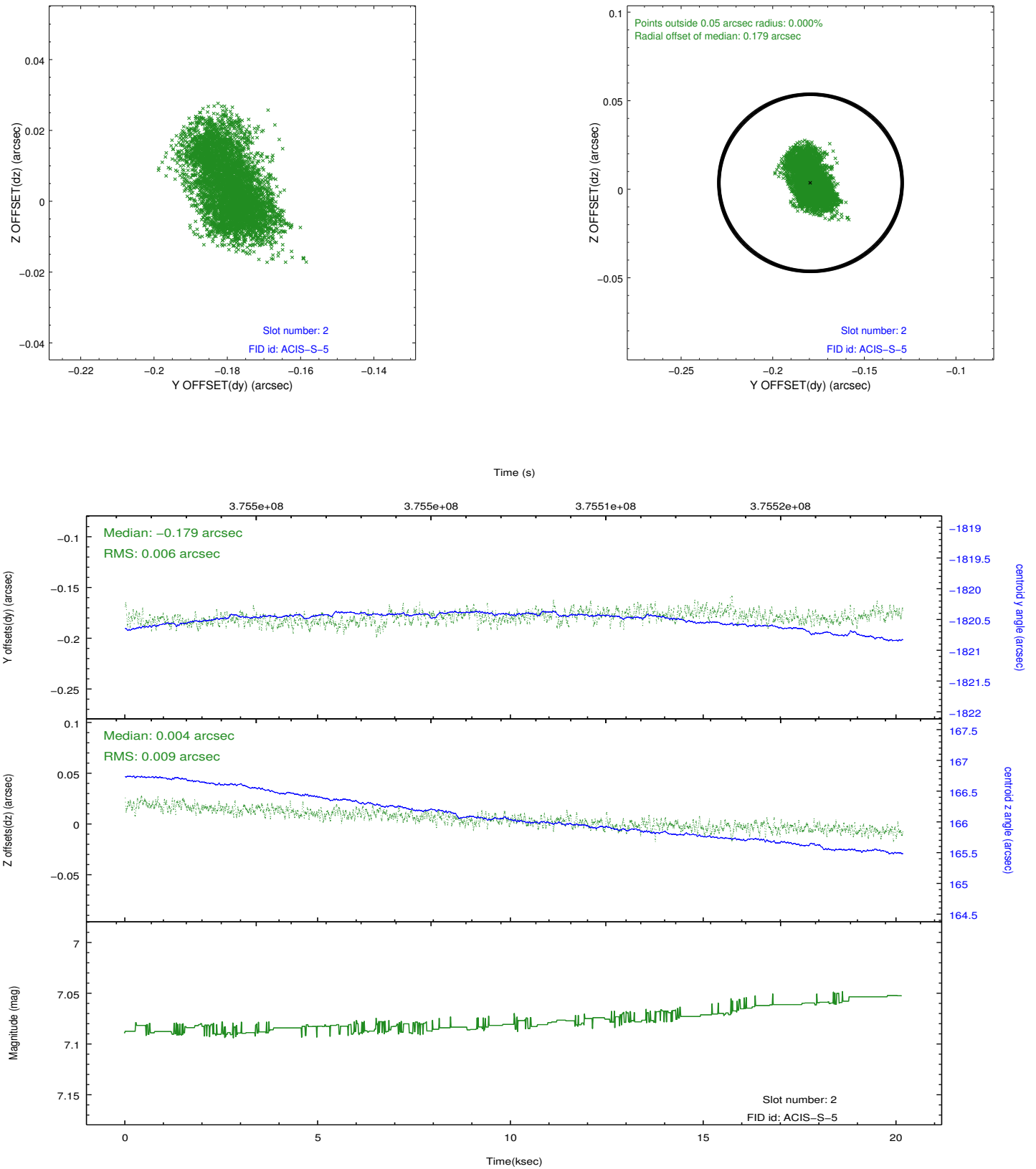
2.5.1 Slot 0



2.5.2 Slot 1



2.5.3 Slot 2



A Summary

A.1 Status

V&V Scientist	Beth Sundheim
V&V Date (YYYY-MM-DD)	2012.06.20
V&V Edition	1
V&V Disposition and Status	OK
V&V Charge Time	20.150399924994

A.2 Comments