

V&V Reference Report

L2 ASCDS Version : 8.4.5

Observation 12254 - L2 Version 3
Chandra X-Ray Center

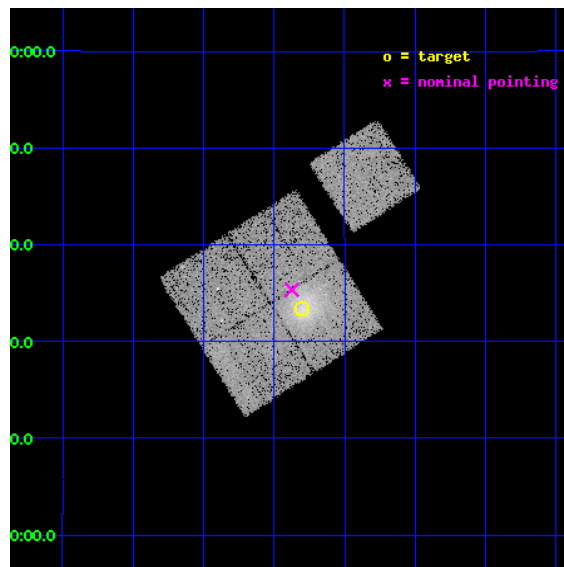
L2 Processing Date : Jul 7 2012

Contents

1	Front	2
2	OBI	3
2.1	OBI	3
2.1.1	Images	3
2.1.2	Bias	3
2.1.3	Parameters	4
2.1.4	Events	4
2.2	Compared Parameters	5
2.3	Aspect	6
2.4	Star Slots	9
2.4.1	Slot 4	9
2.4.2	Slot 5	10
2.4.3	Slot 6	11
2.4.4	Slot 7	12
2.5	FID Slots	13
2.5.1	Slot 0	13
2.5.2	Slot 1	14
2.5.3	Slot 2	15
A	Summary	16
A.1	Status	16
A.2	Comments	16

1 Front

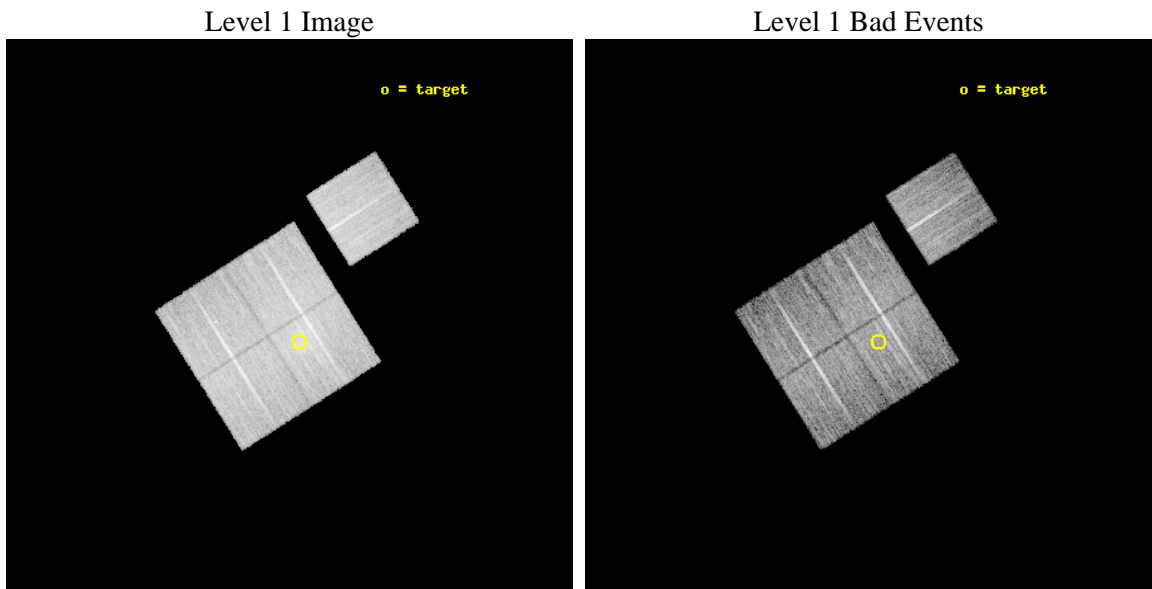
seq_num	800974	Sequence number
obs_id	12254	Observation id
title	Extending X-ray and Sunyaev-Zel'dovich effect calibrations to low mass galaxy clusters	Proposal title
observer	Dr Ben Maughan	Principal investigator
object	A1553	Source name
dtcycle	0	
cycle	P	events from which exps? Prim/Second/Both
ra_targ	187.7	Observer's specified target RA [deg]
dec_targ	10.556	Observer's specified target Dec [deg]
ra_nom	187.71852844753	Nominal RA [deg]
dec_nom	10.589090750862	Nominal Dec [deg]
roll_nom	57.642296891603	Nominal Roll [deg]
revision	3	Processing version of data
ontime	14052.300108075	Sum of GTIs [s]
liveltime	13868.69646201	Livetime [s]
ontime0	14052.284596682	Sum of GTIs [s]
ontime1	14052.300108075	Sum of GTIs [s]
ontime2	14052.300108075	Sum of GTIs [s]
ontime3	14052.300108075	Sum of GTIs [s]
ontime6	14049.102596283	Sum of GTIs [s]
l2events	64407	Number of level 2 events



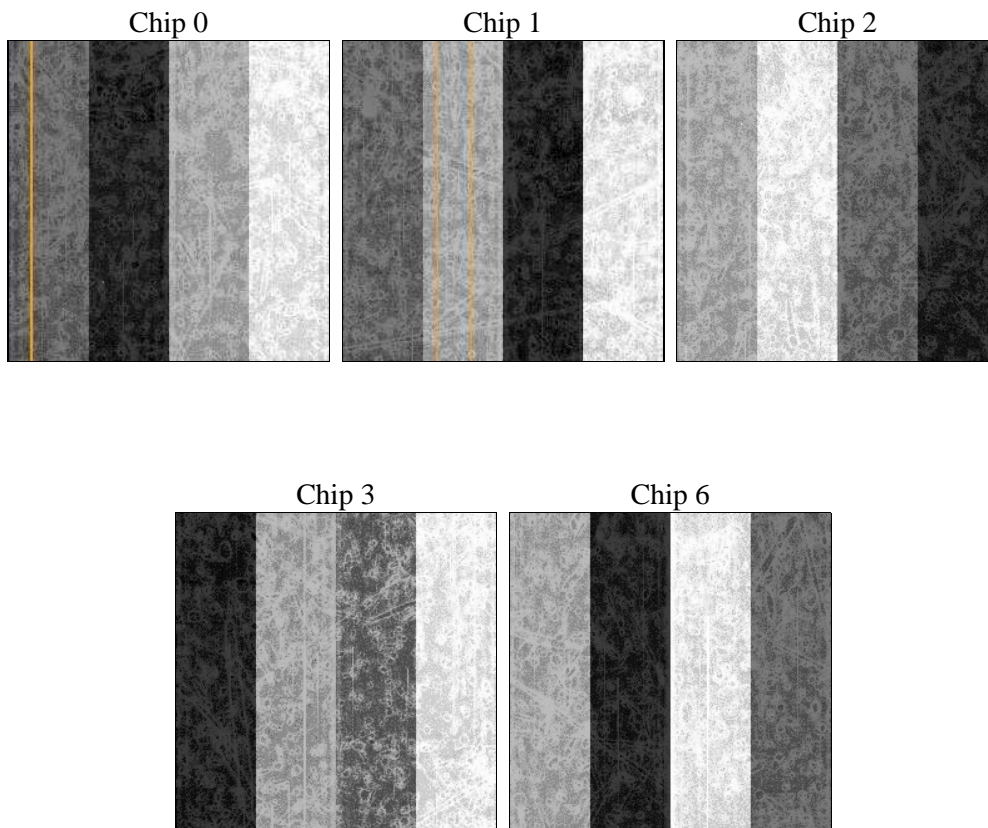
2 OBI

2.1 OBI

2.1.1 Images



2.1.2 Bias



2.1.3 Parameters

obi_num	0	Obi number	sched_exp_time	14000.839000	[s] Scheduled observation exposure time
ascdsver	8.4.5	Processing system revision	ontime	14052.300108075	Sum of GTIs [s]
caldbver	4.5.0	 	ontime0	14052.284596682	Sum of GTIs [s]
date	2012-07-07T11:59:33	Date and time of file creation	ontime1	14052.300108075	Sum of GTIs [s]
revision	3	Processing version of data	ontime2	14052.300108075	Sum of GTIs [s]
			ontime3	14052.300108075	Sum of GTIs [s]
			ontime6	14049.102596283	Sum of GTIs [s]
			l1events	503864	Number of level 1 events

2.1.4 Events

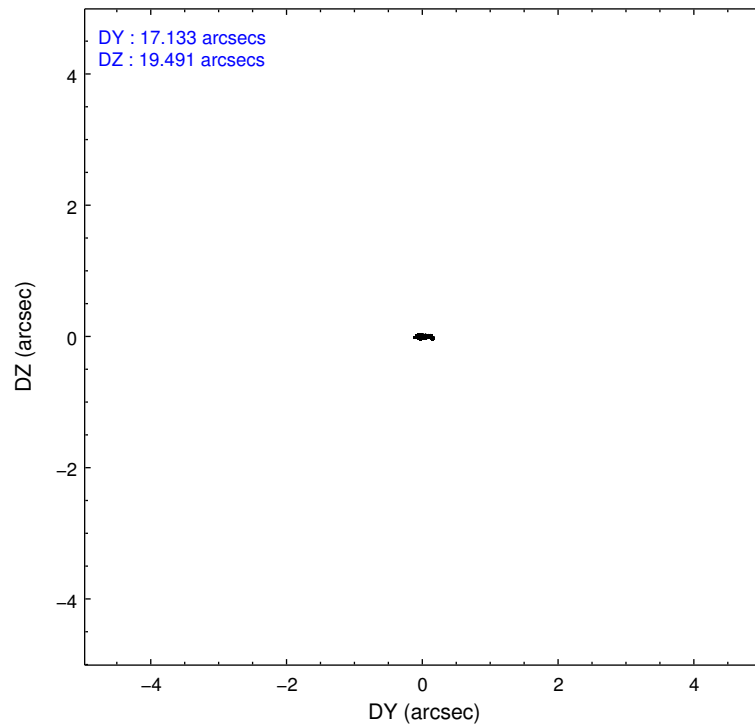
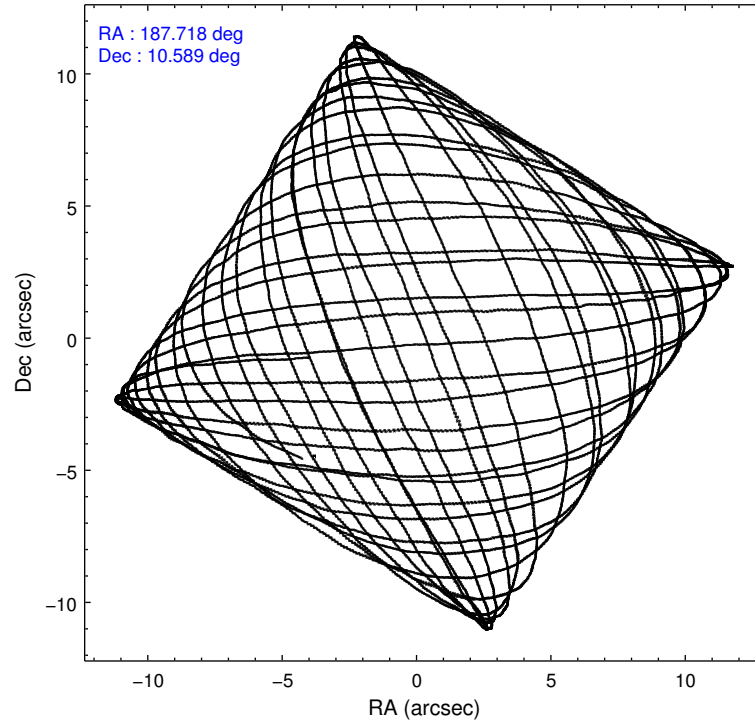
	ccd 0	ccd 1	ccd 2	ccd 3	ccd 6
level 1 events	89859	96050	103446	111838	102671
rejected events	77235	81959	90701	89724	89990
rejected %	85%	85%	87%	80%	87%

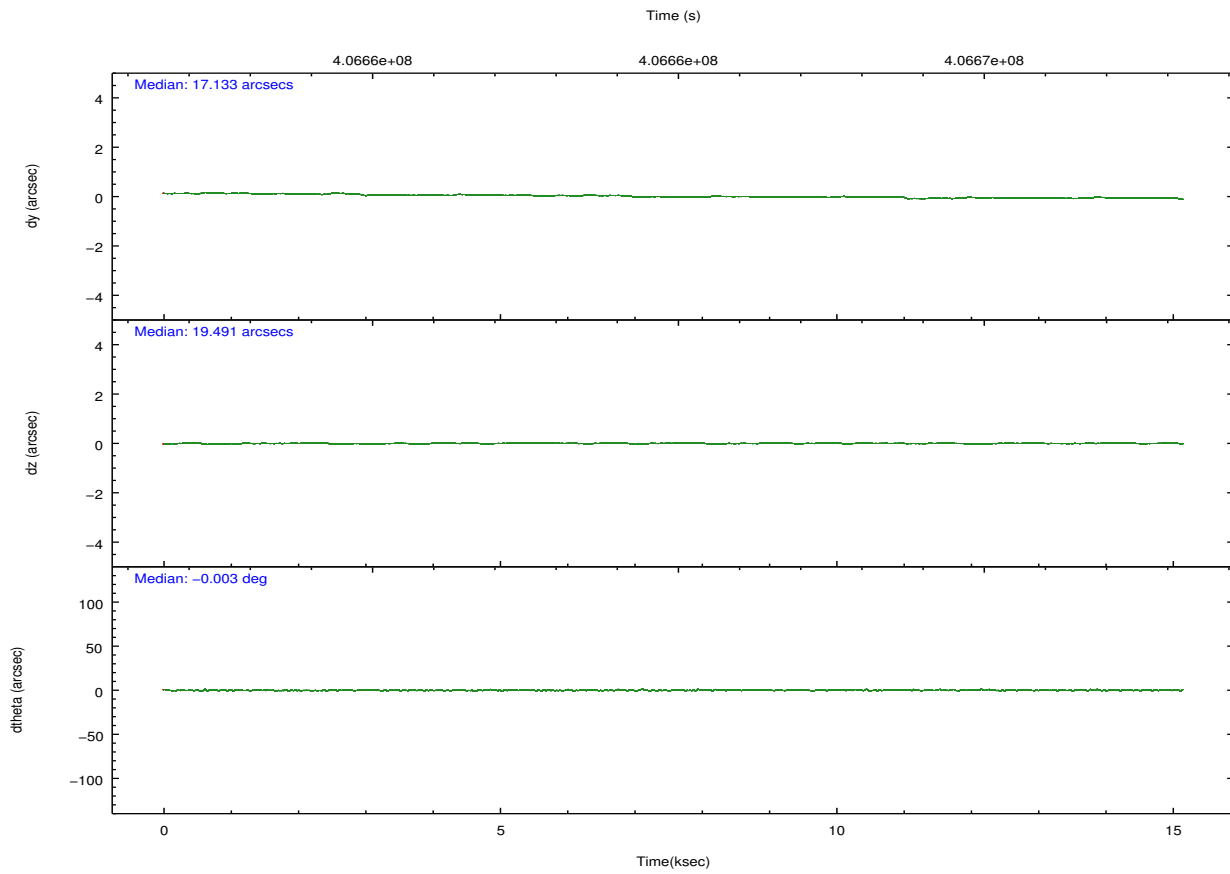
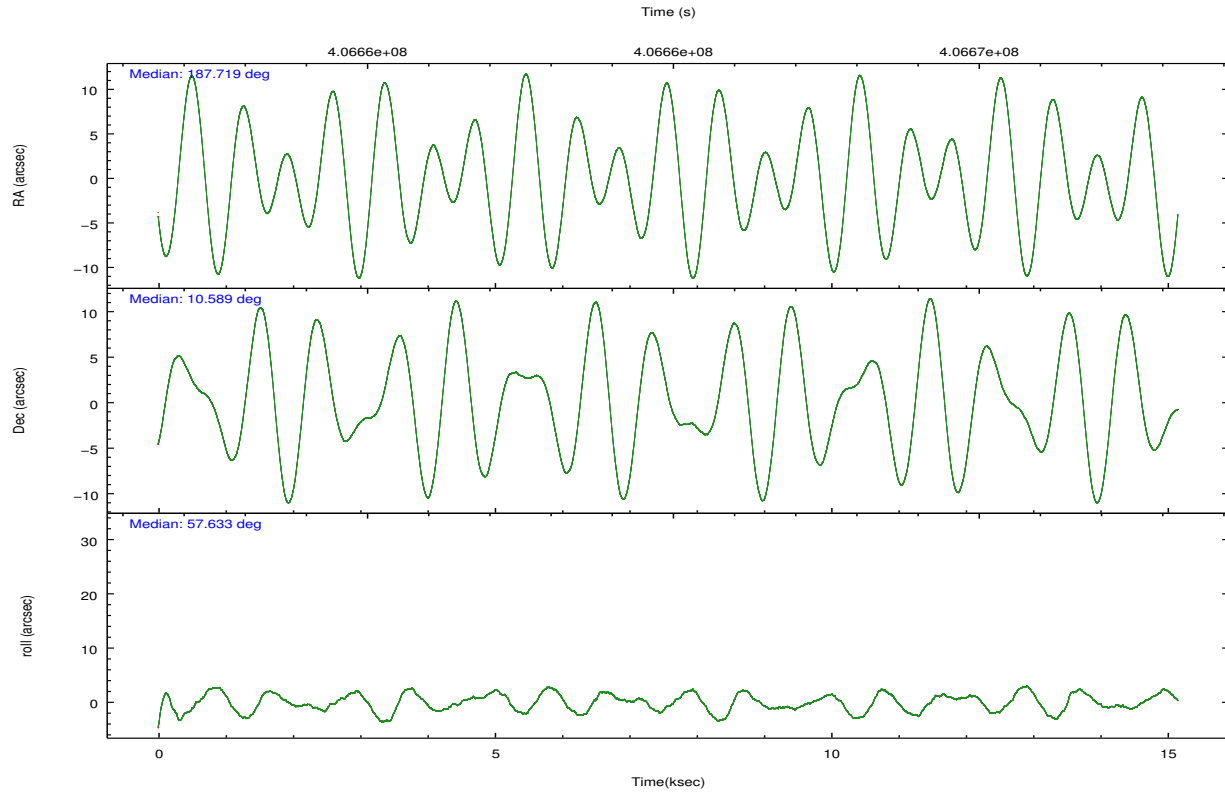
	ccd 0	ccd 1	ccd 2	ccd 3	ccd 6
grade 0 events	4991	5830	5363	13237	4930
	5%	6%	5%	11%	4%
grade 1 events	69	58	85	106	48
	0%	0%	0%	0%	0%
grade 2 events	2955	3033	2901	3467	2709
	3%	3%	2%	3%	2%
grade 3 events	1236	1302	1190	1427	1355
	1%	1%	1%	1%	1%
grade 4 events	1187	1365	1191	1527	1157
	1%	1%	1%	1%	1%
grade 5 events	4107	4378	4004	4695	4495
	4%	4%	3%	4%	4%
grade 6 events	2267	2567	2105	2462	2538
	2%	2%	2%	2%	2%
grade 7 events	73047	77517	86607	84917	85439
	81%	80%	83%	75%	83%

2.2 Compared Parameters

Parameter	Planned	Actual	Parameter	Planned	Actual
Instrument	ACIS	ACIS	Obspar format version number	7	7
Detector	ACIS-01236	ACIS-01236	Obspar file type	PREDICTED	ACTUAL
Grating	NONE	NONE	Obspar update status	NONE	UPDATED
Data mode	VFAINT	VFAINT	Number of optional ACIS chips dropped	0	0
Observation mode	POINTING	POINTING	On-chip summing requested	N	N
[deg] Pointing RA	187.717522	187.7185284475327	Subarray requested	NONE	NONE
[deg] Pointing Dec	10.561607	10.58909075086224	Alternating exposures requested	N	N
[deg] Pointing Roll	57.433801	57.64229689160331	[s] Primary exposure time	0.000000	3.1
[mm] SIM focus pos	-0.782348	-0.7809083437167272			
[mm] SIM defocus	0	0.001439871863259334			
[mm] SIM translation stage pos	-228.092463	-228.0961698422217			
[mm] SIM translation stage offset	-5.5	-5.496283160708032			
[s] Observation start time (MET)	406658485.184000	406657075.12592			
Observation start date	2010-11-20T16:40:19	2010-11-20T16:17:55			
[s] Observation end time (MET)	406672486.184000	406672725.85173			
Observation end date	2010-11-20T20:33:40	2010-11-20T20:38:45			
Read mode	TIMED	TIMED			

2.3 Aspect



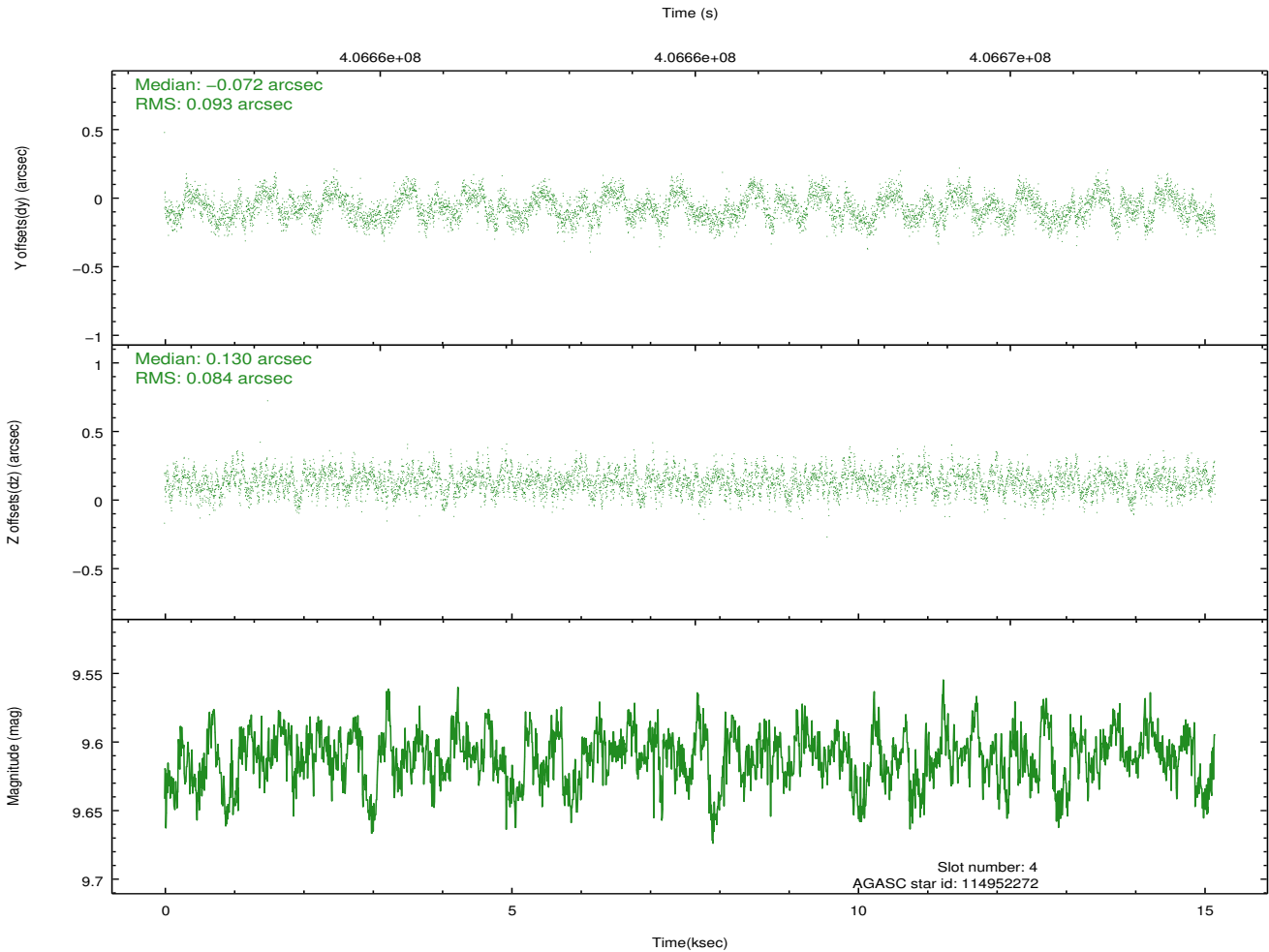
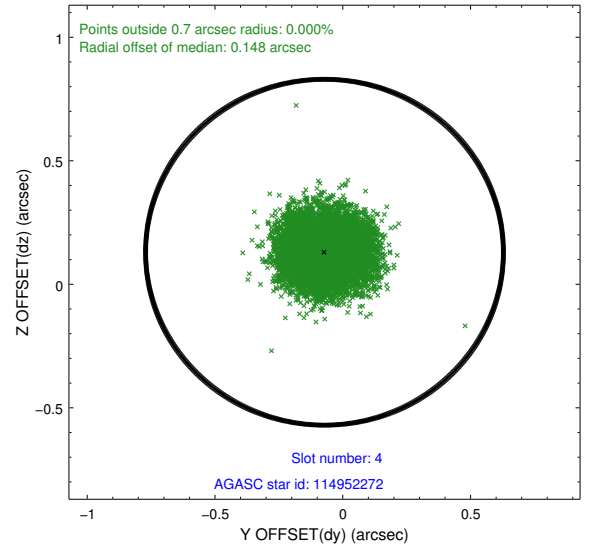
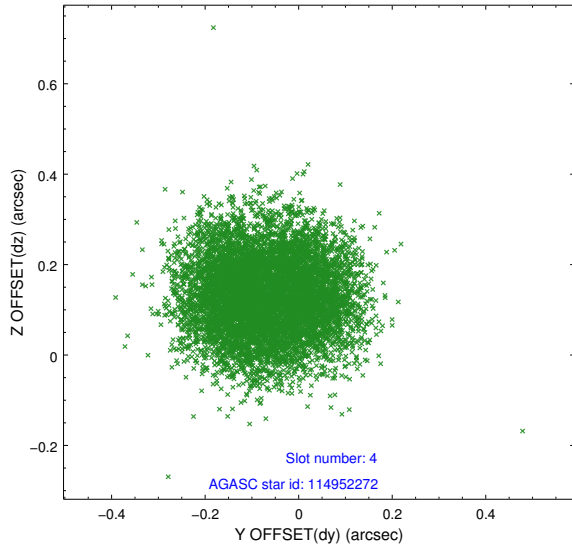


Slot Statistics

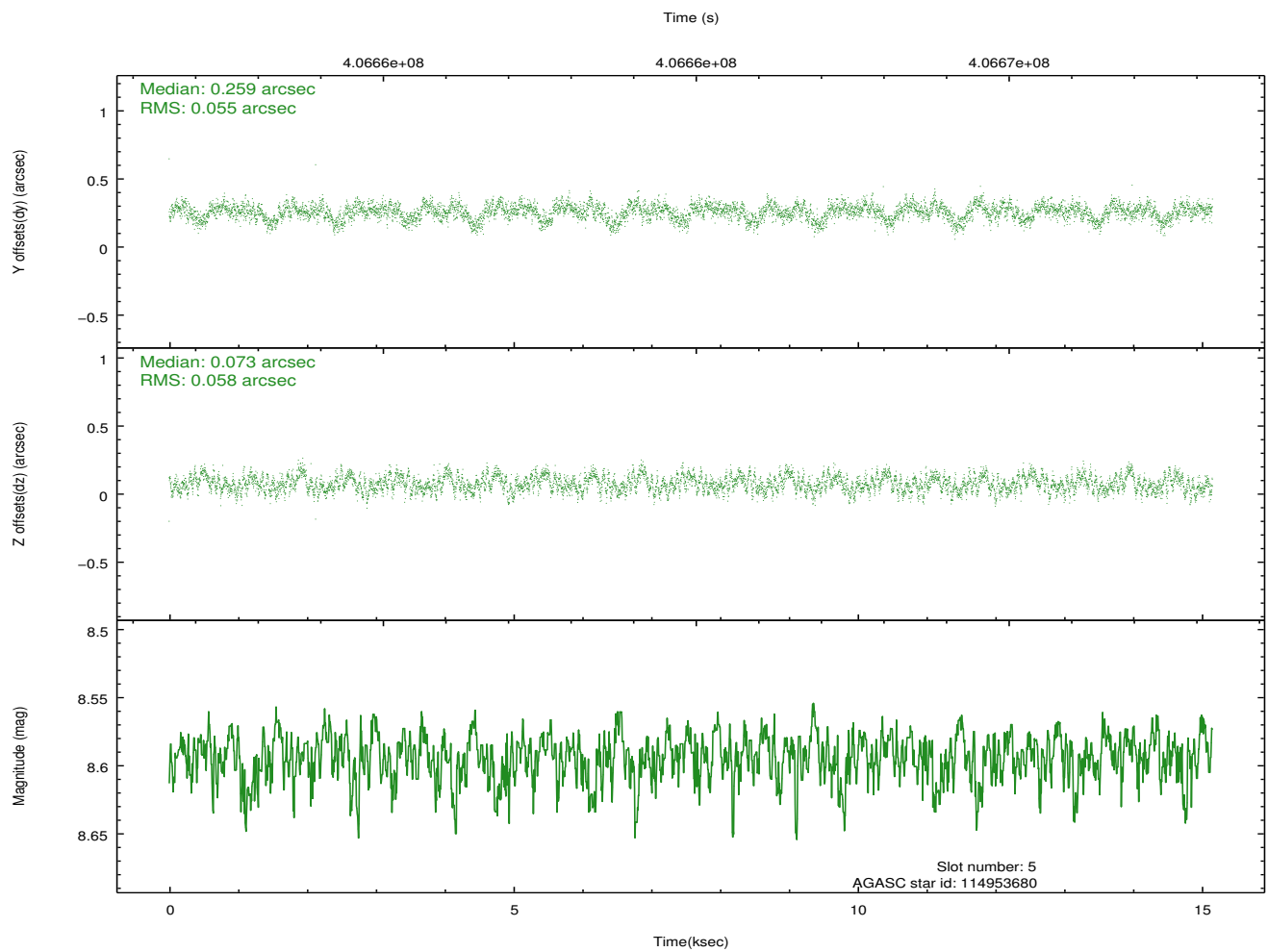
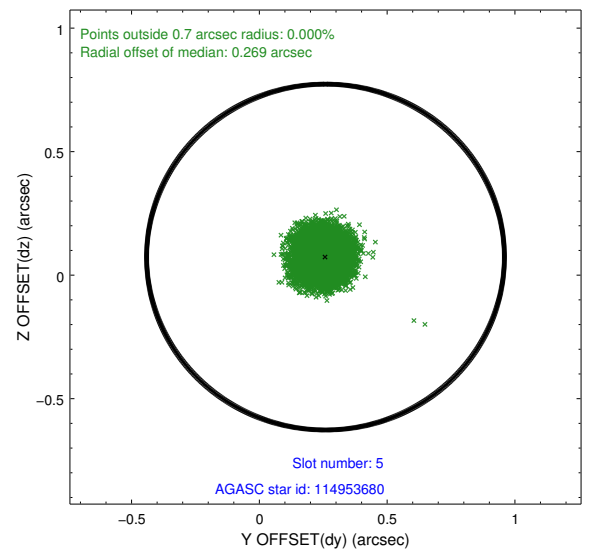
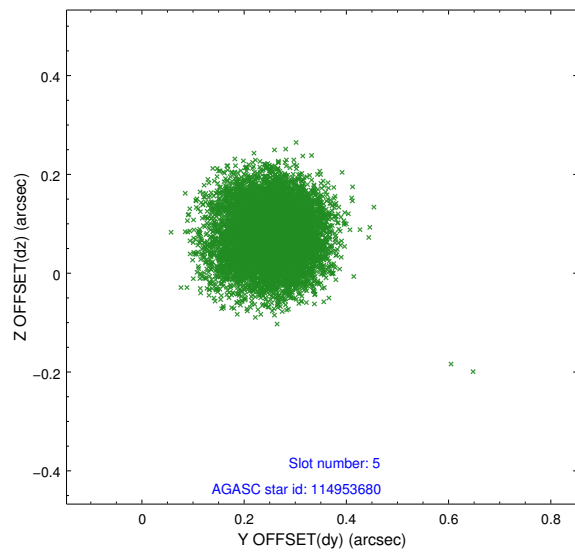
slot	status	id	mag	n_pts	med_dy	med_dz	dr1	dr2	ra	dec	mean_y	mean_z
0	FID	ACIS-I-1	7.01	3696	0.112	-0.037	0.006	0.011	0.000000	0.000000	922.27	-956.03
1	FID	ACIS-I-5	7.00	3696	-0.248	0.110	0.007	0.012	0.000000	0.000000	-1826.06	941.37
2	FID	ACIS-I-6	7.00	3696	0.045	-0.002	0.007	0.011	0.000000	0.000000	387.38	1586.15
3	OMITTED		0.00	0	0.000	0.000	0.000	0.000	0.000000	0.000000	0.00	0.00
4	GUIDE	114952272	9.61	7381	-0.072	0.130	0.136	0.207	188.040724	10.470216	339.66	-1140.64
5	GUIDE	114953680	8.59	7387	0.259	0.073	0.086	0.135	187.904378	10.267361	-537.37	-1126.86
6	GUIDE	114957272	8.84	7388	-0.136	-0.409	0.090	0.139	187.367706	11.138889	1086.72	2160.45
7	GUIDE	114957816	6.25	7392	-0.050	0.205	0.069	0.113	188.261994	10.295673	233.31	-2138.63

2.4 Star Slots

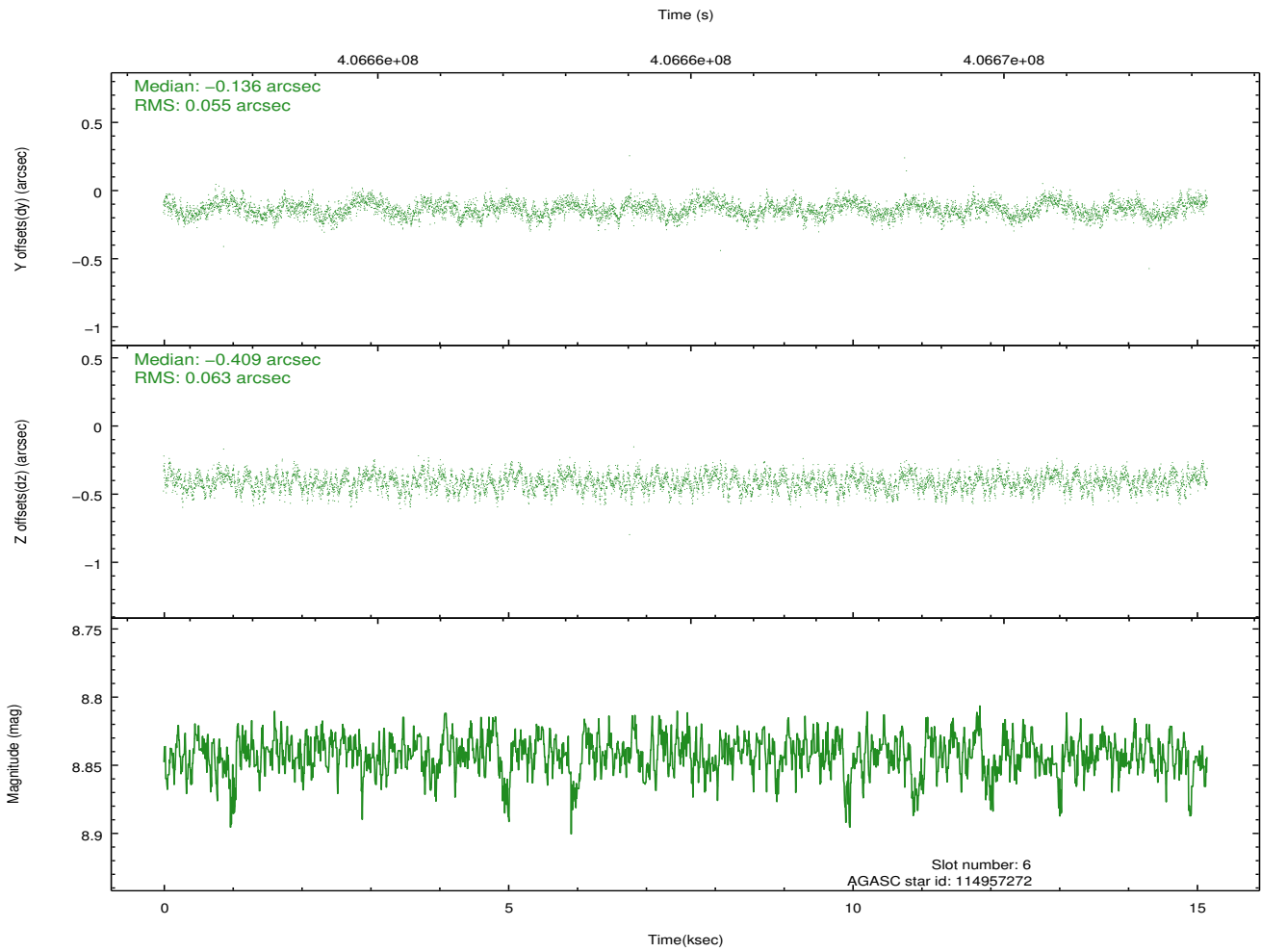
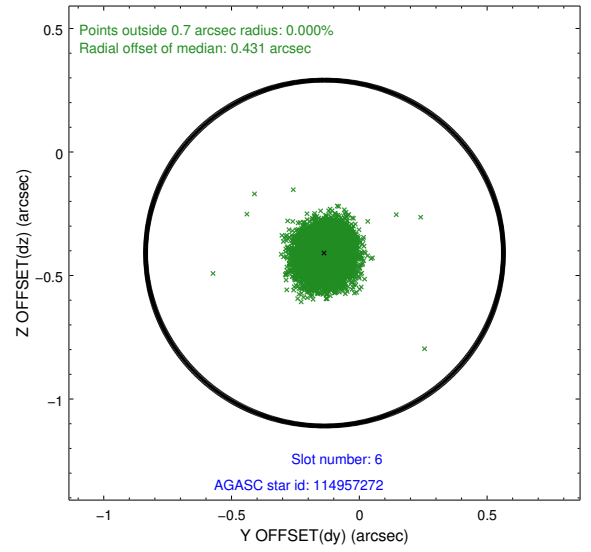
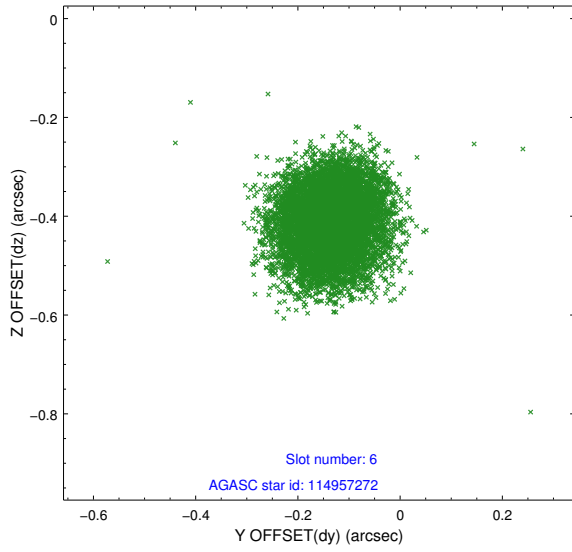
2.4.1 Slot 4



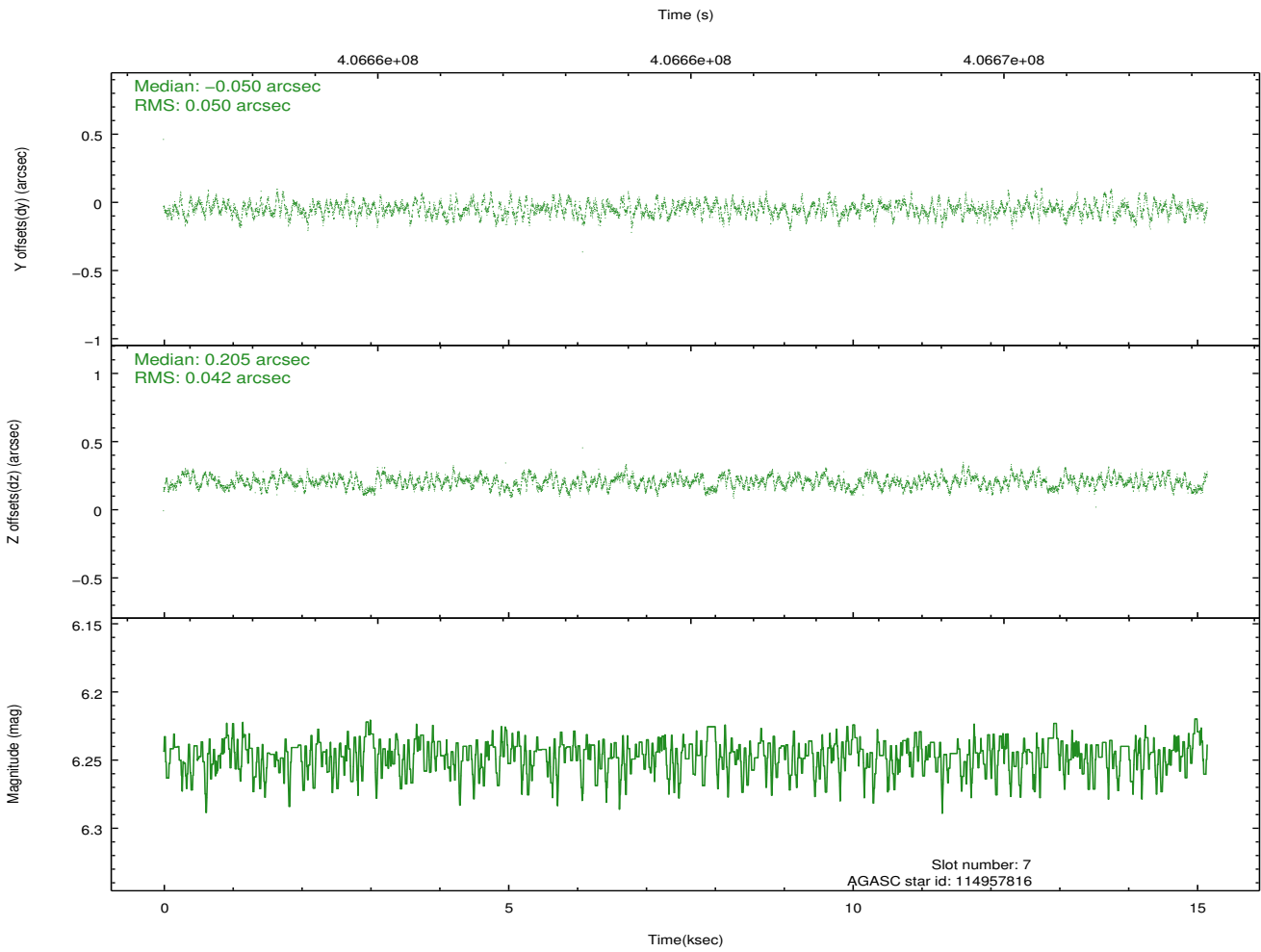
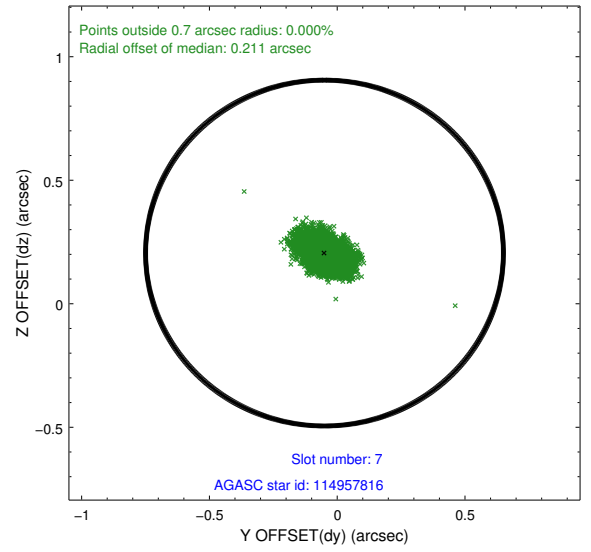
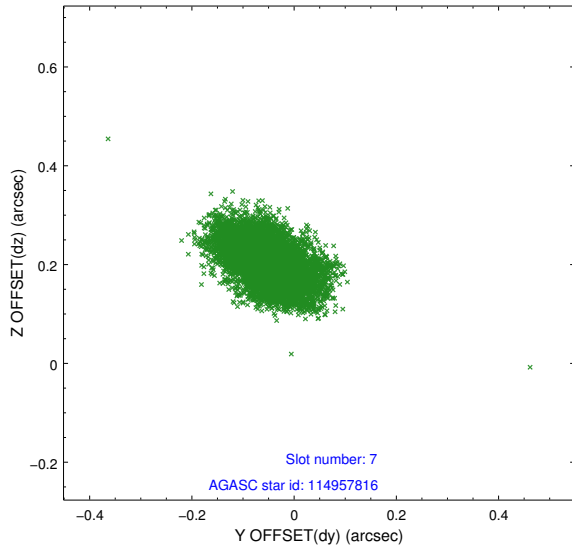
2.4.2 Slot 5



2.4.3 Slot 6

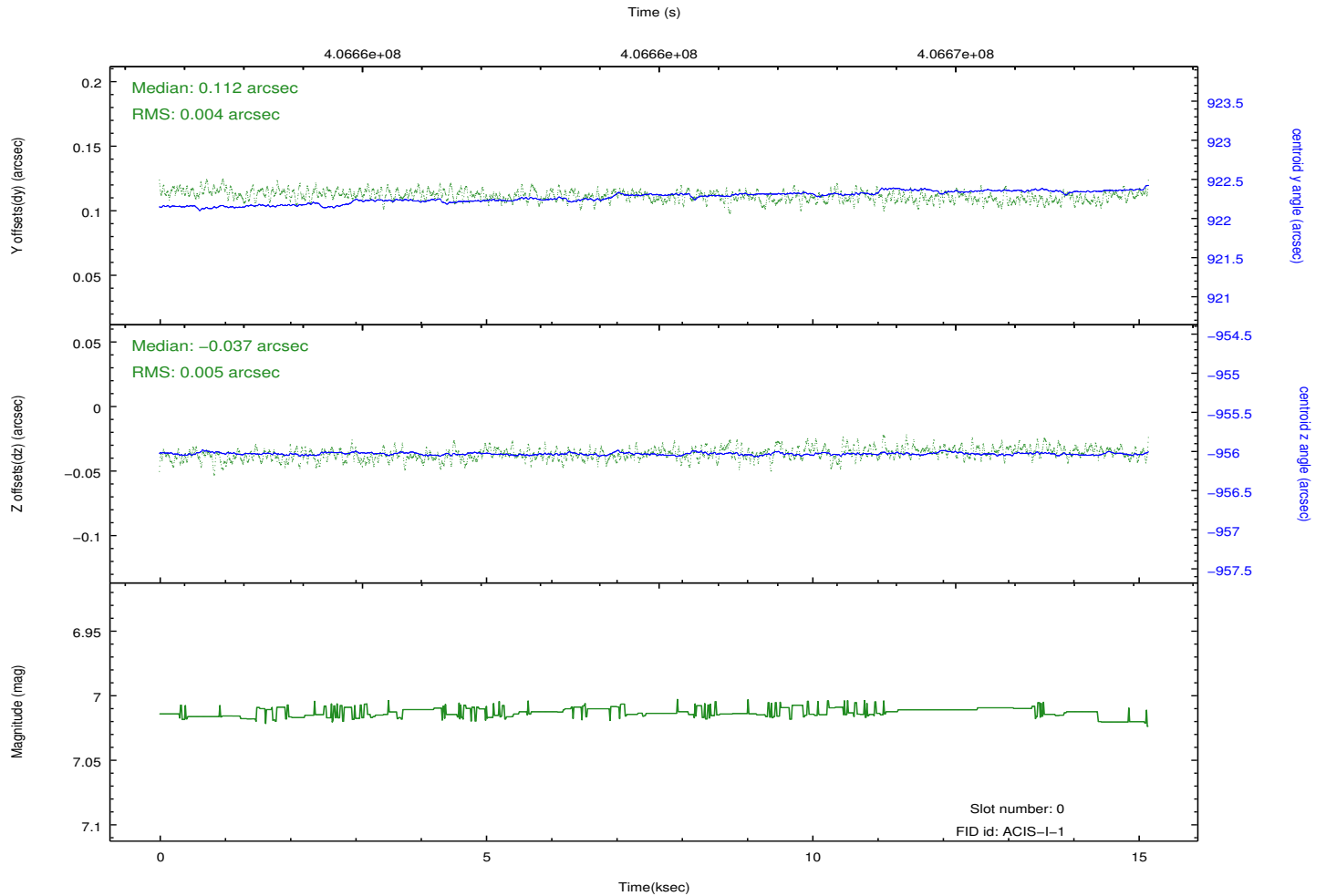
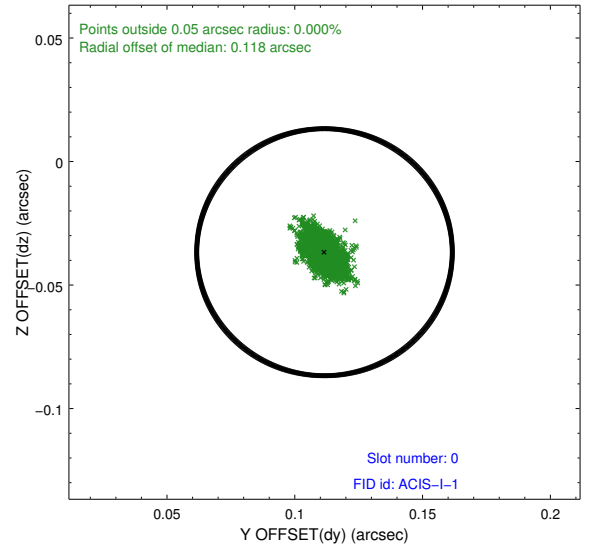
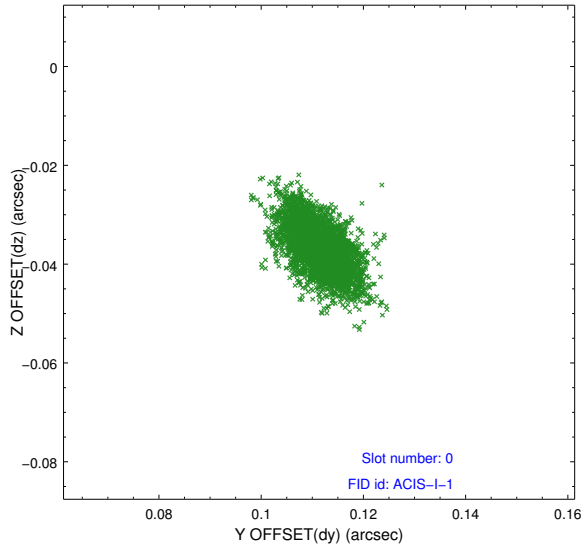


2.4.4 Slot 7

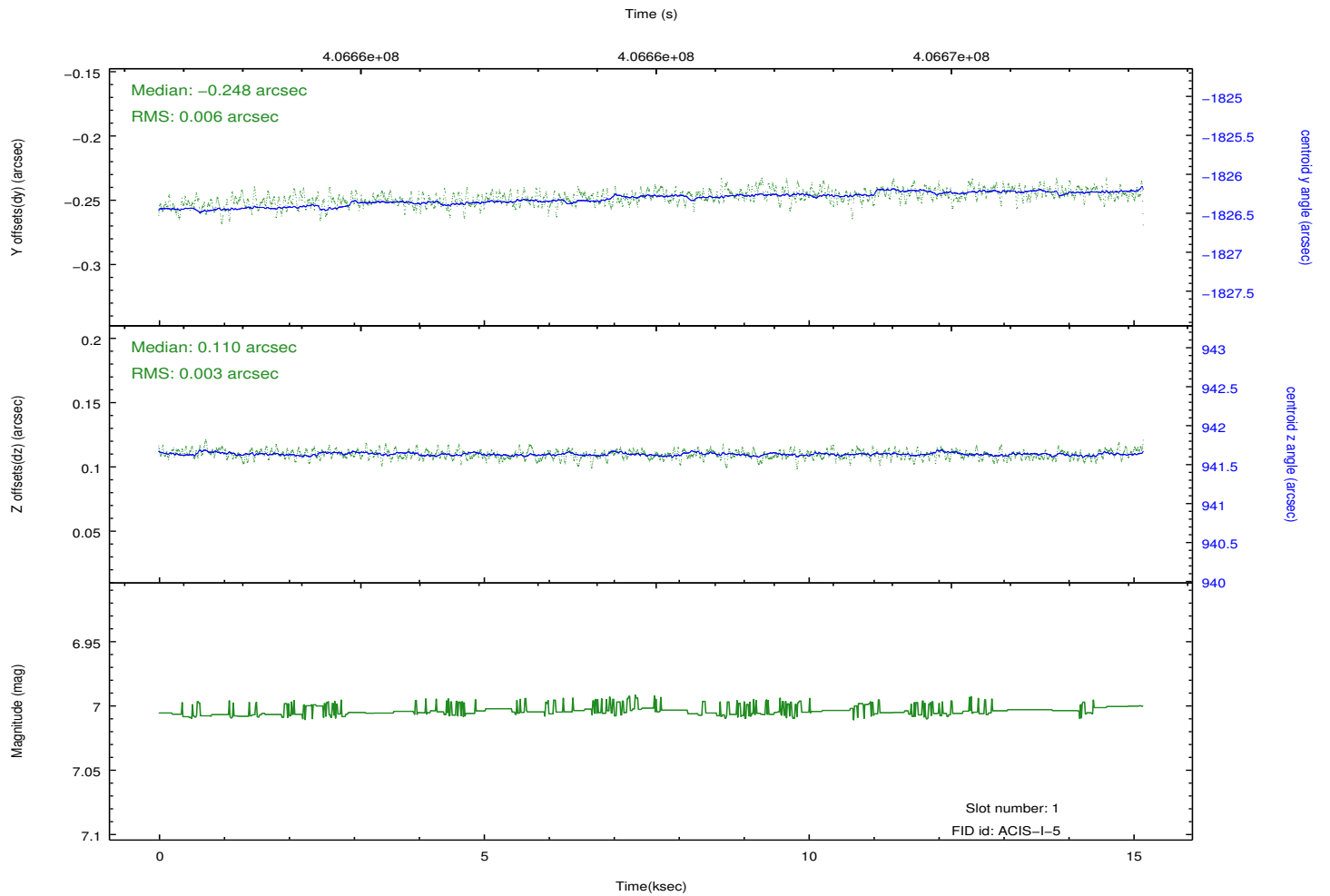
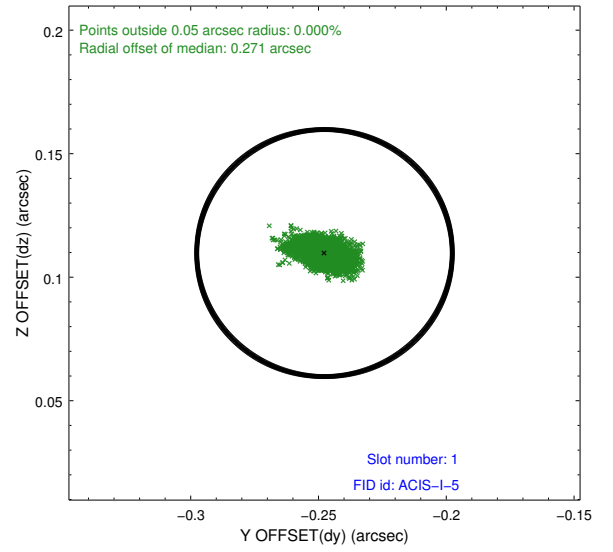
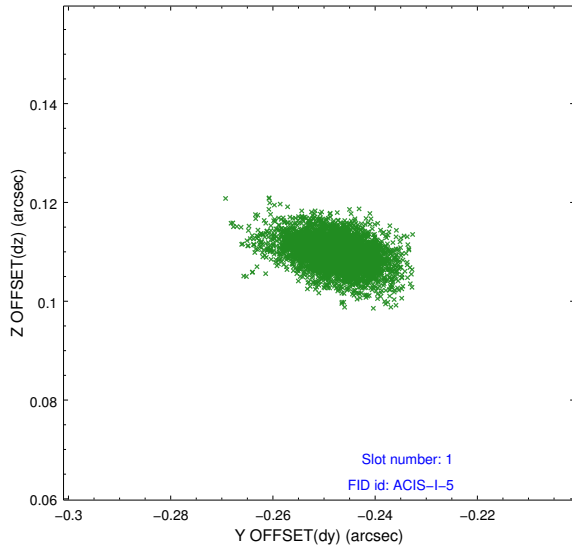


2.5 FID Slots

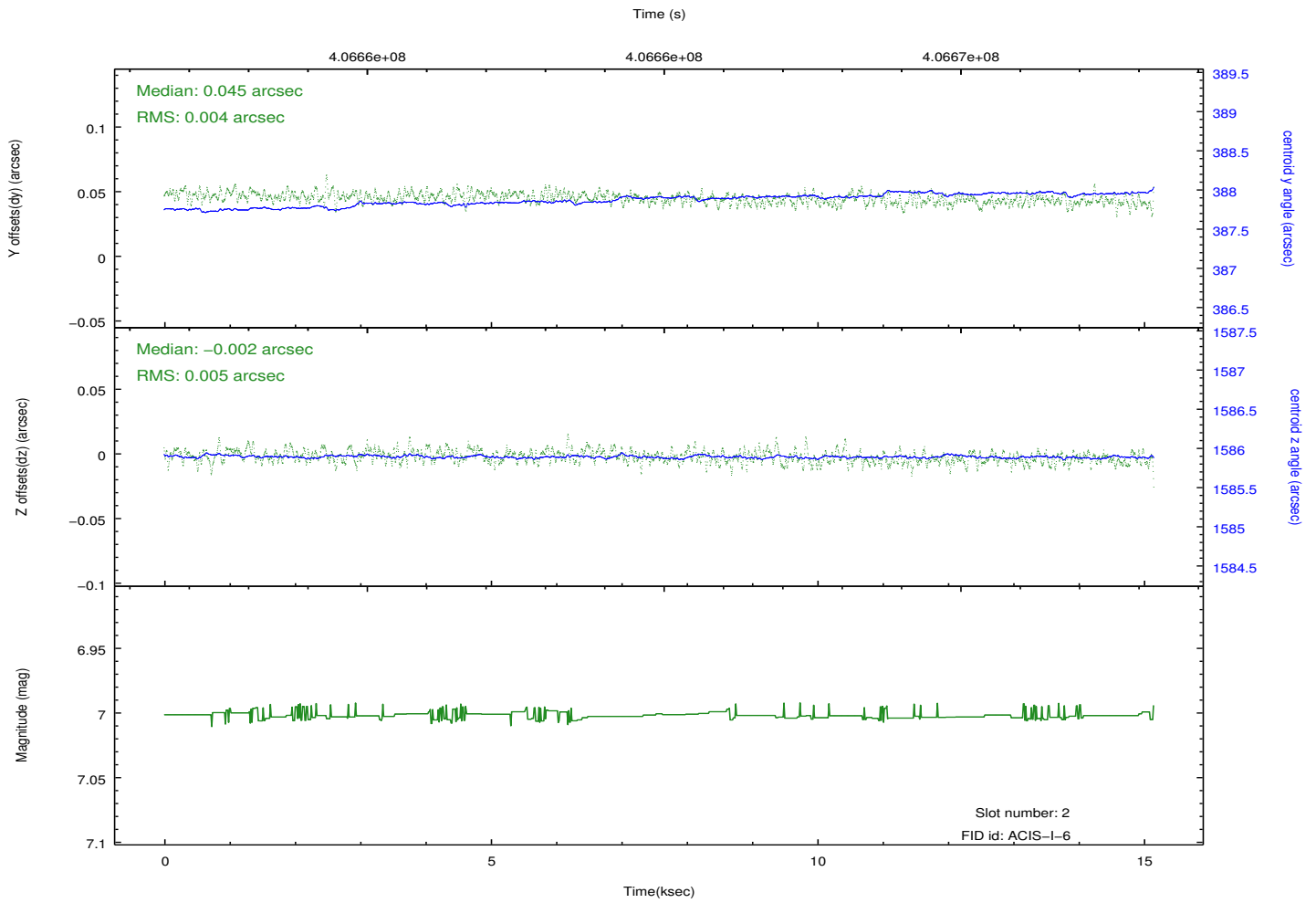
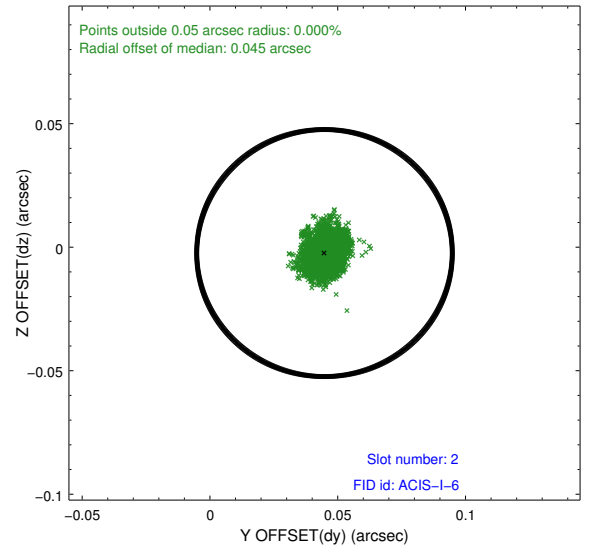
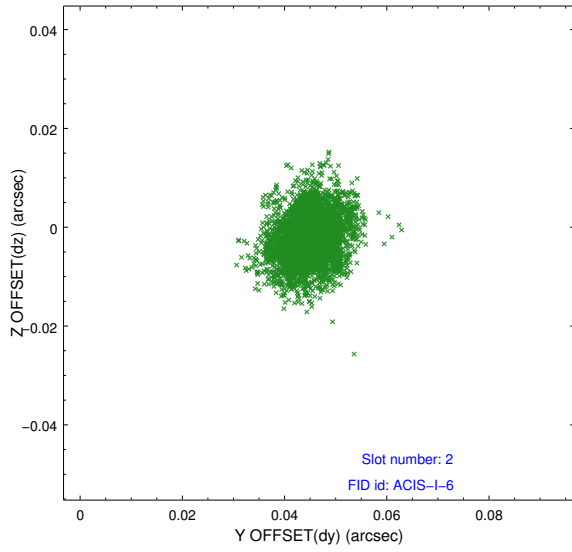
2.5.1 Slot 0



2.5.2 Slot 1



2.5.3 Slot 2



A Summary

A.1 Status

V&V Scientist	Jen Lauer
V&V Date (YYYY-MM-DD)	2012.07.17
V&V Edition	1
V&V Disposition and Status	OK
V&V Charge Time	14.052300108075

A.2 Comments

The guide star in slot 3 was removed from the aspect solution due to poor data quality. The aspect solution is improved by the removal of this guide star from the solution.