

V&V Reference Report

L2 ASCDS Version : 8.4.4

Observation 14424 - L2 Version 1
Chandra X-Ray Center

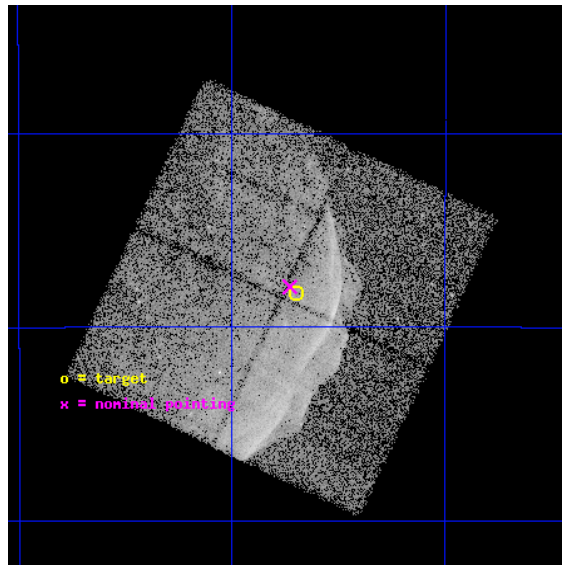
L2 Processing Date : Apr 27 2012

Contents

1	Front	2
2	OBI	3
2.1	OBI	3
2.1.1	Images	3
2.1.2	Bias	3
2.1.3	Parameters	4
2.1.4	Events	4
2.2	Compared Parameters	5
2.3	Aspect	6
2.4	Star Slots	9
2.4.1	Slot 3	9
2.4.2	Slot 4	10
2.4.3	Slot 5	11
2.4.4	Slot 6	12
2.4.5	Slot 7	13
2.5	FID Slots	14
2.5.1	Slot 0	14
2.5.2	Slot 1	15
2.5.3	Slot 2	16
A	Summary	17
A.1	Status	17
A.2	Comments	17

1 Front

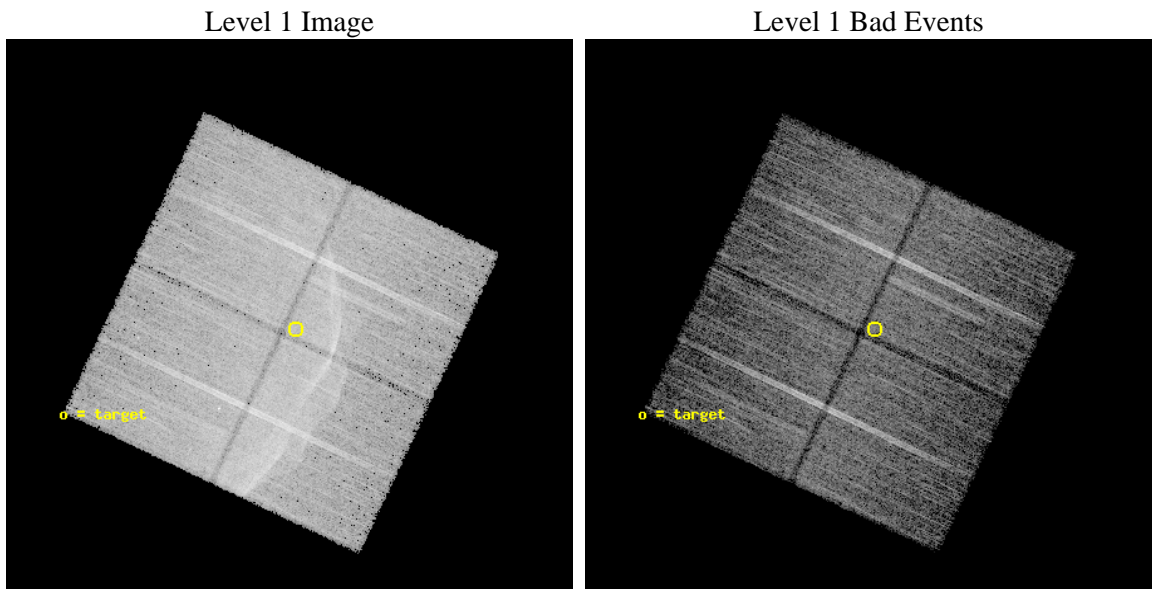
seq_num	501571	Sequence number
obs_id	14424	Observation id
title	SN1006: SHOCK PHYSICS, COSMIC-RAY ACCELERATION, AND SN IA EXPLOSIONS	
observer	Dr. P. Winkler	Principal investigator
object	SN1006 W	Source name
dtcycle	0	
cycle	P	events from which exps? Prim/Second/Both
ra_targ	225.424083	Observer's specified target RA [deg]
dec_targ	-41.970822	Observer's specified target Dec [deg]
ra_nom	225.43205412068	Nominal RA [deg]
dec_nom	-41.965336254257	Nominal Dec [deg]
roll_nom	25.314018630616	Nominal Roll [deg]
revision	1	Processing version of data
ontime	25726.900197864	Sum of GTIs [s]
livetime	25390.75930691	Livetime [s]
ontime0	25720.566447854	Sum of GTIs [s]
ontime1	25726.889498413	Sum of GTIs [s]
ontime2	25720.618187249	Sum of GTIs [s]
ontime3	25726.900197864	Sum of GTIs [s]
l2events	149692	Number of level 2 events



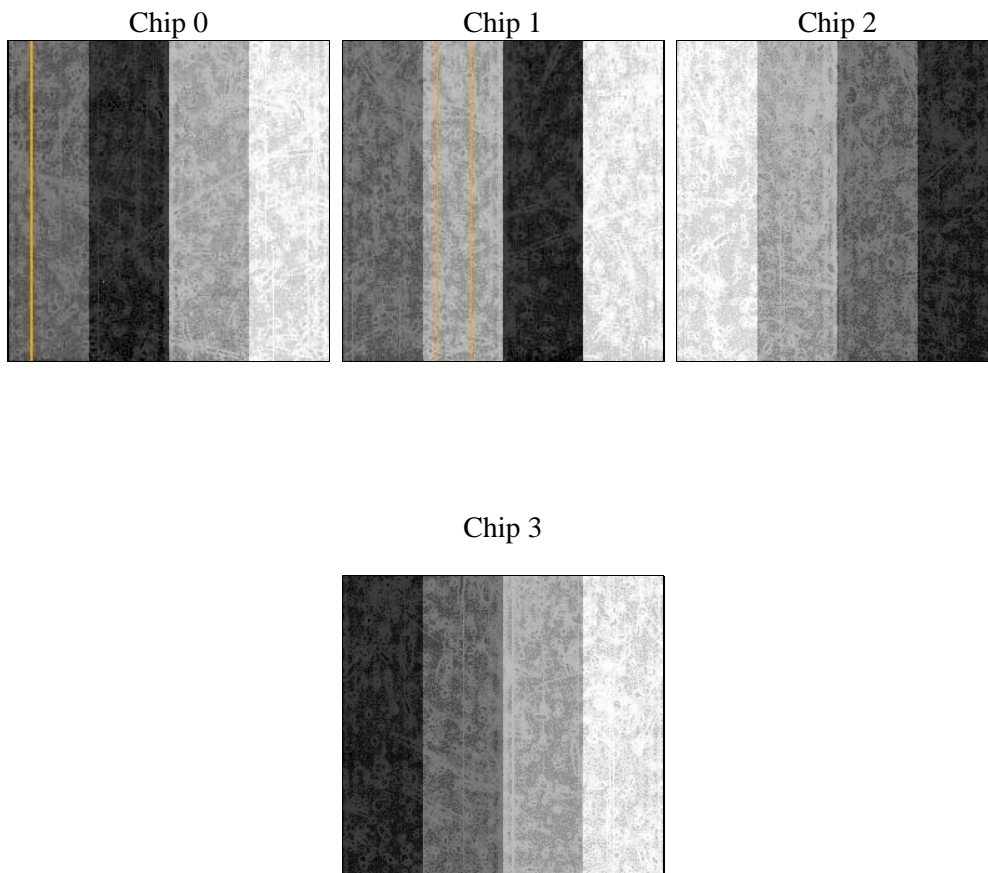
2 OBI

2.1 OBI

2.1.1 Images



2.1.2 Bias



2.1.3 Parameters

obi_num	0	Obi number	sched_exp_time	25636.358000	[s] Scheduled observation exposure time
ascdsver	8.4.4	Processing system revision	ontime	25726.900197864	Sum of GTIs [s]
caldsver	4.4.9	 	ontime0	25720.566447854	Sum of GTIs [s]
date	2012-04-27T20:48:42	Date and time of file creation	ontime1	25726.889498413	Sum of GTIs [s]
revision	1	Processing version of data	ontime2	25720.618187249	Sum of GTIs [s]
			ontime3	25726.900197864	Sum of GTIs [s]
			l1events	663223	Number of level 1 events

2.1.4 Events

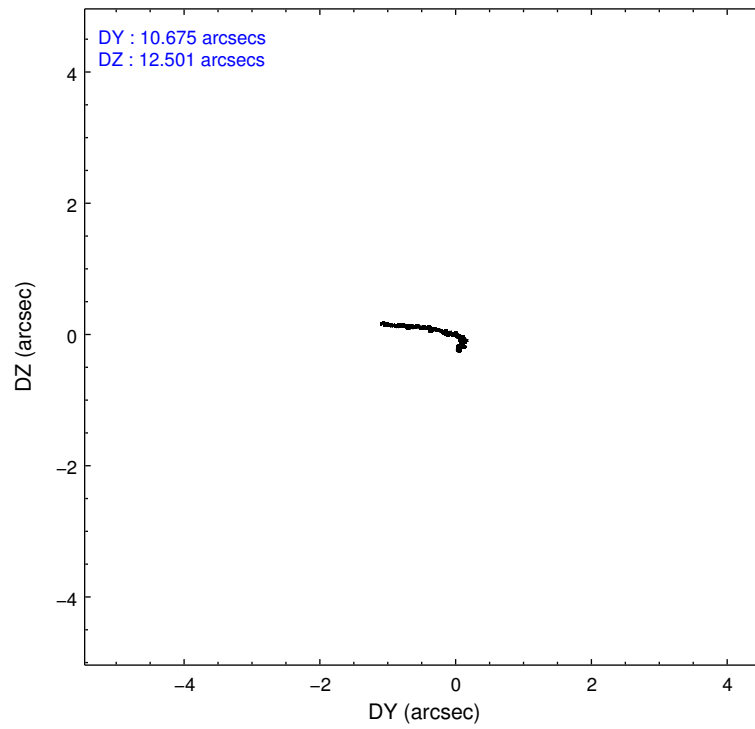
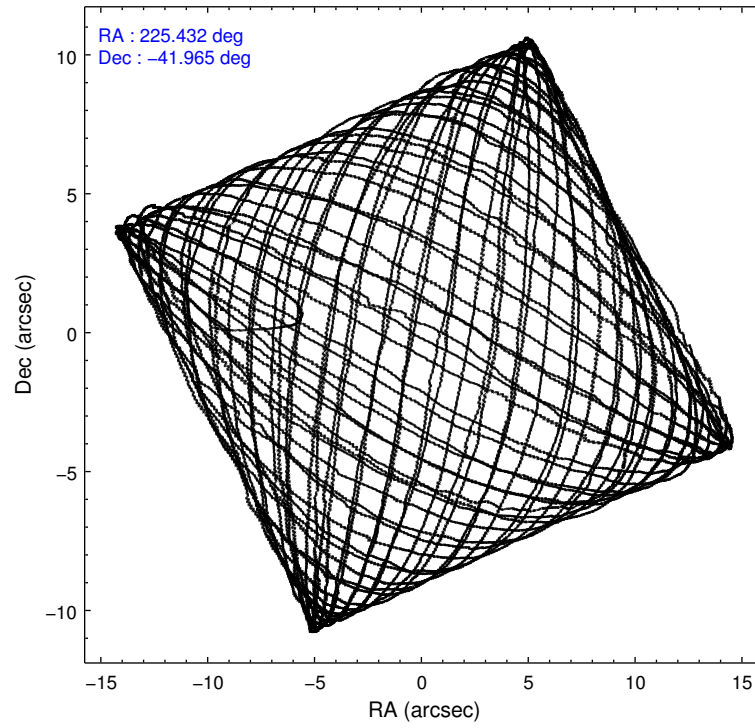
	ccd 0	ccd 1	ccd 2	ccd 3
level 1 events	157367	183188	165805	156863
rejected events	118104	118460	134240	125524
rejected %	75%	64%	80%	80%

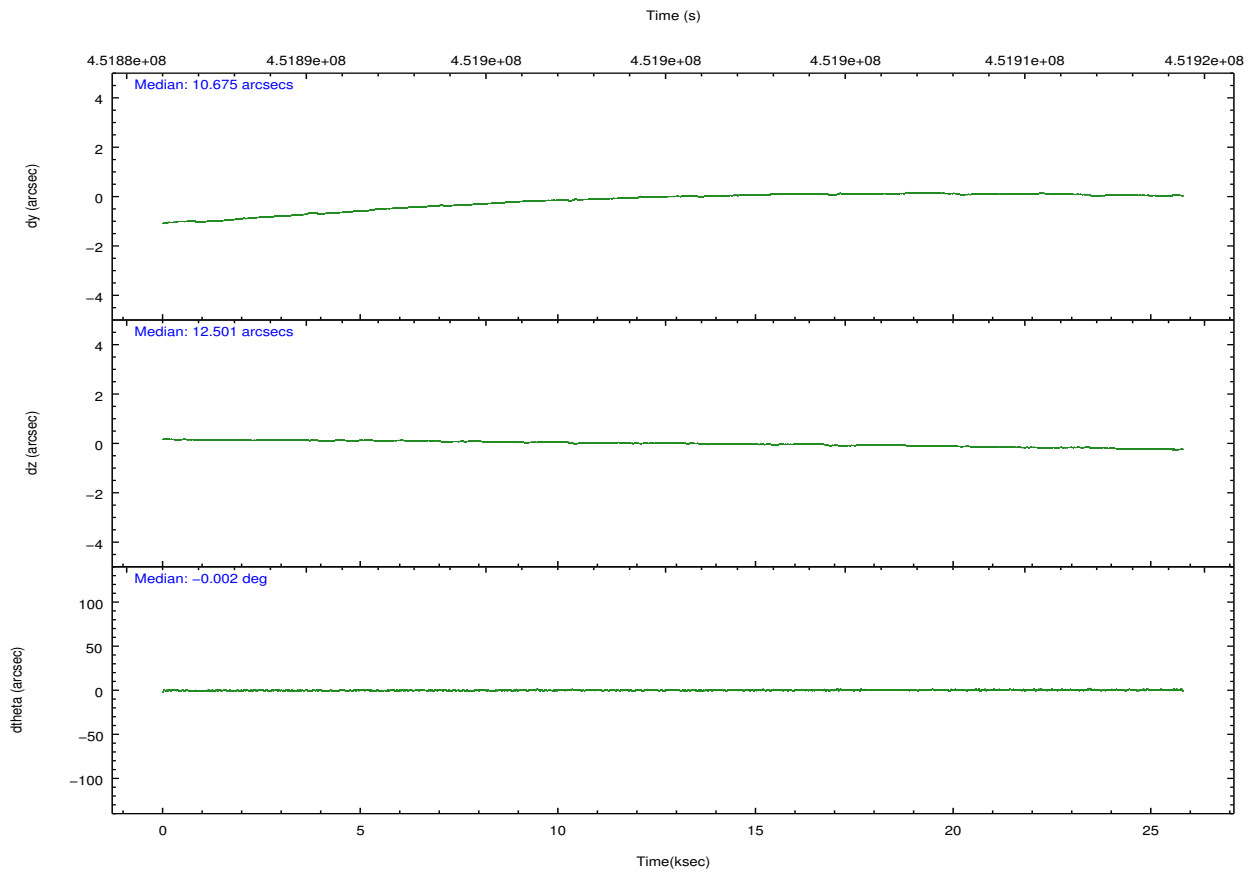
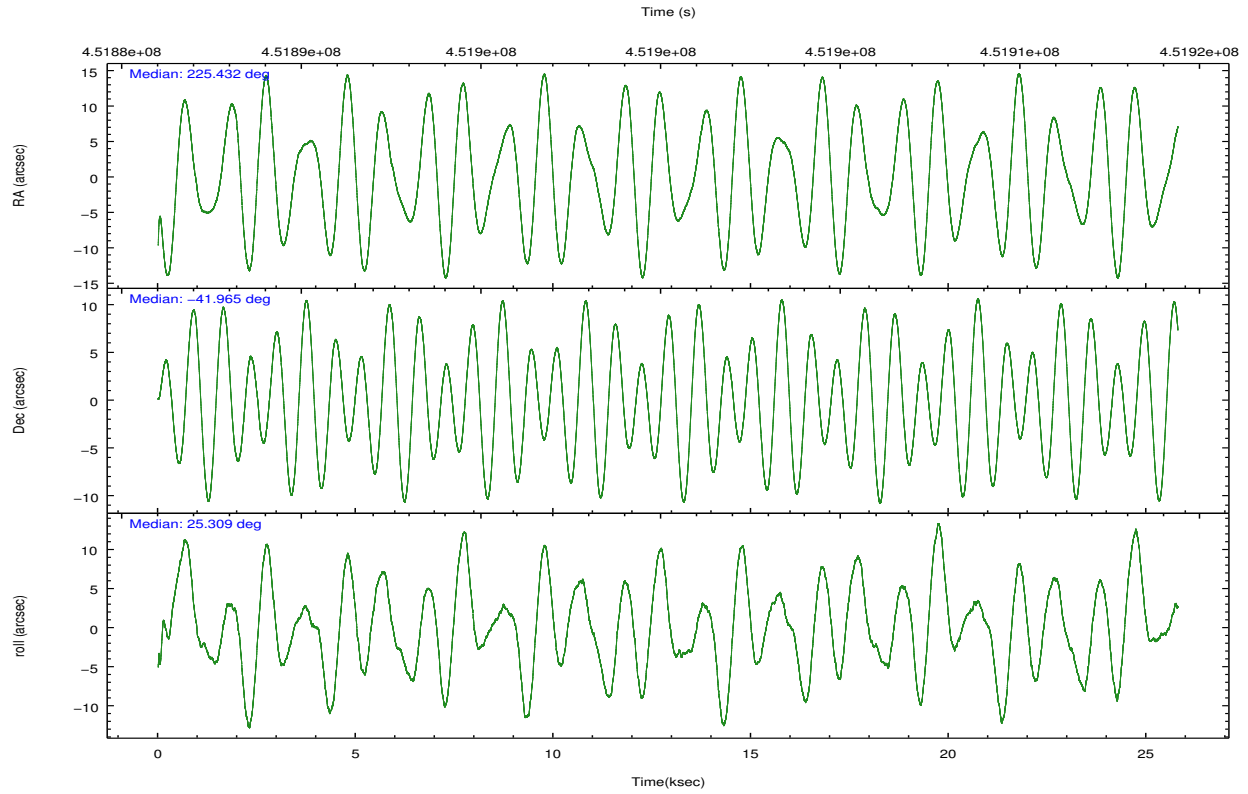
	ccd 0	ccd 1	ccd 2	ccd 3
grade 0 events	25201	45294	19190	18585
	16%	24%	11%	11%
grade 1 events	145	233	125	137
	0%	0%	0%	0%
grade 2 events	6038	8760	5059	5042
	3%	4%	3%	3%
grade 3 events	2354	3005	1977	2107
	1%	1%	1%	1%
grade 4 events	2084	2968	1961	2071
	1%	1%	1%	1%
grade 5 events	6391	7259	6385	7548
	4%	3%	3%	4%
grade 6 events	3590	4707	3382	3539
	2%	2%	2%	2%
grade 7 events	111564	110962	127726	117834
	70%	60%	77%	75%

2.2 Compared Parameters

Parameter	Planned	Actual	Parameter	Planned	Actual
Instrument	ACIS	ACIS	Obspar format version number	7	7
Detector	ACIS-0123	ACIS-0123	Obspar file type	PREDICTED	ACTUAL
Grating	NONE	NONE	Obspar update status	NONE	UPDATED
Data mode	VFAINT	VFAINT	Number of optional ACIS chips dropped	0	0
Observation mode	POINTING	POINTING	On-chip summing requested	N	N
[deg] Pointing RA	225.411157	225.4320541206793	Subarray requested	NONE	NONE
[deg] Pointing Dec	-41.988015	-41.96533625425685	Alternating exposures requested	N	N
[deg] Pointing Roll	25.091353	25.31401863061604	[s] Primary exposure time	0.000000	3.1
[mm] SIM focus pos	-0.782348	-0.7809083437167272			
[mm] SIM defocus	0	0.001439871863259334			
[mm] SIM translation stage pos	-233.592463	-233.5874344608287			
[mm] SIM translation stage offset	0	-0.005018542100998502			
[s] Observation start time (MET)	451887474.184000	451886432.41947			
Observation start date	2012-04-27T04:16:48	2012-04-27T04:00:32			
[s] Observation end time (MET)	451913110.184000	451913347.38339			
Observation end date	2012-04-27T11:24:04	2012-04-27T11:29:07			
Read mode	TIMED	TIMED			

2.3 Aspect



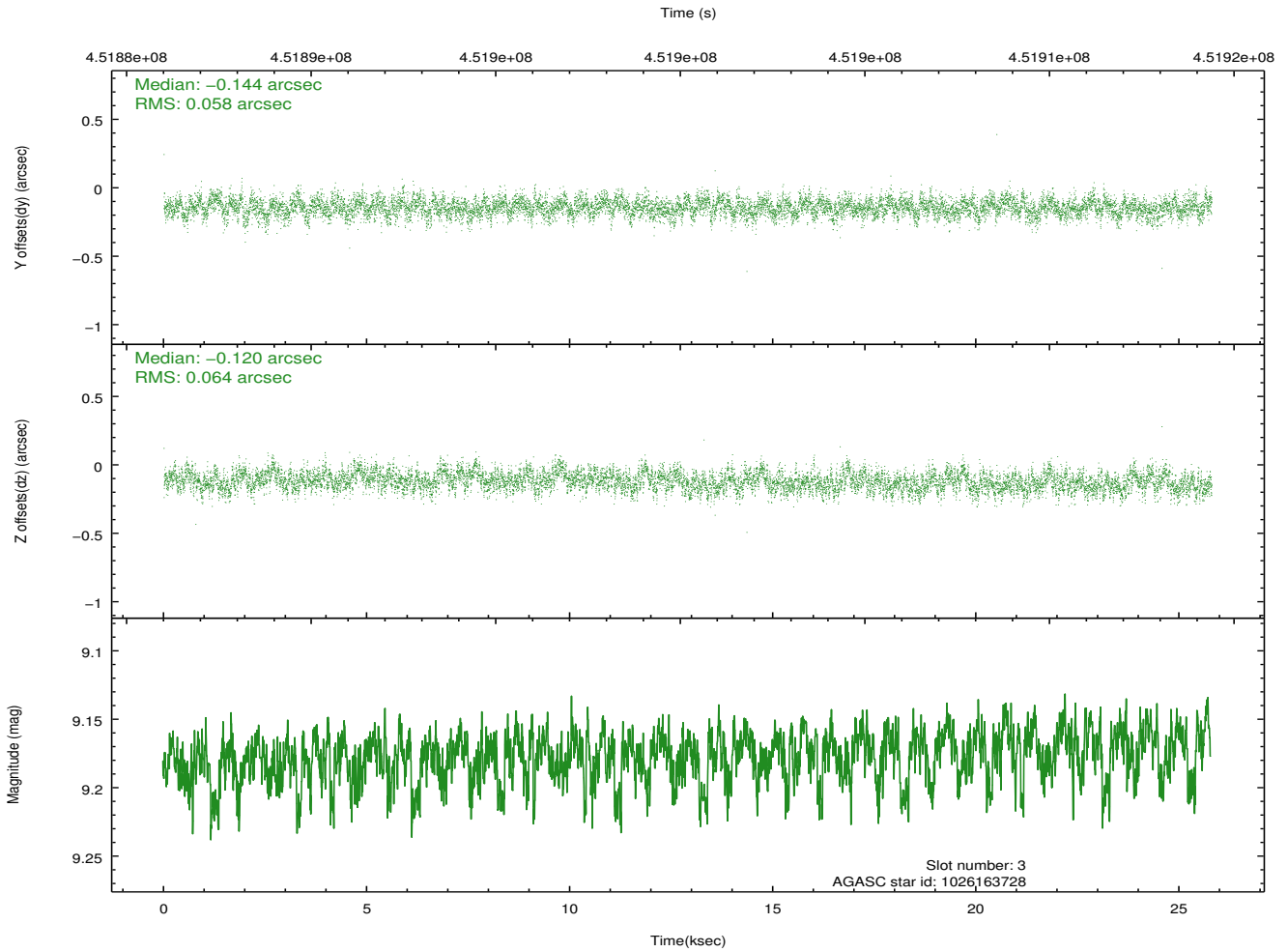
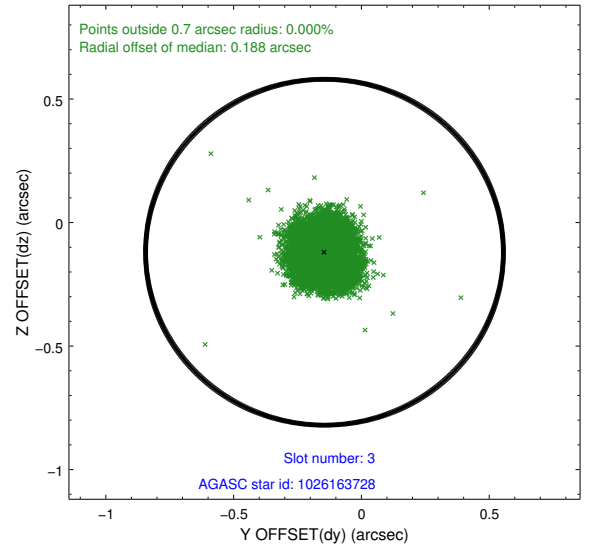
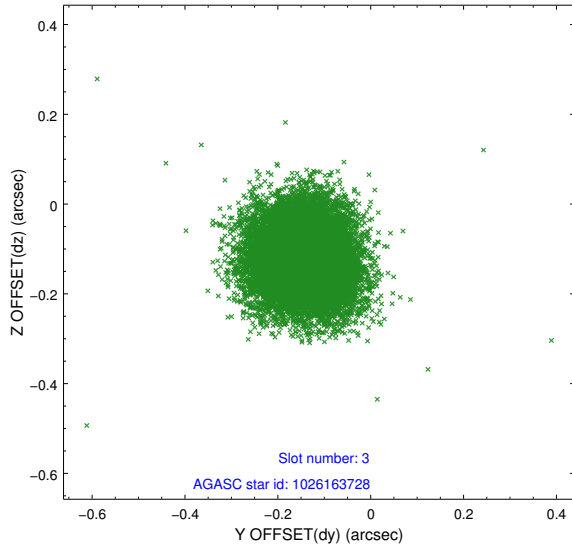


Slot Statistics

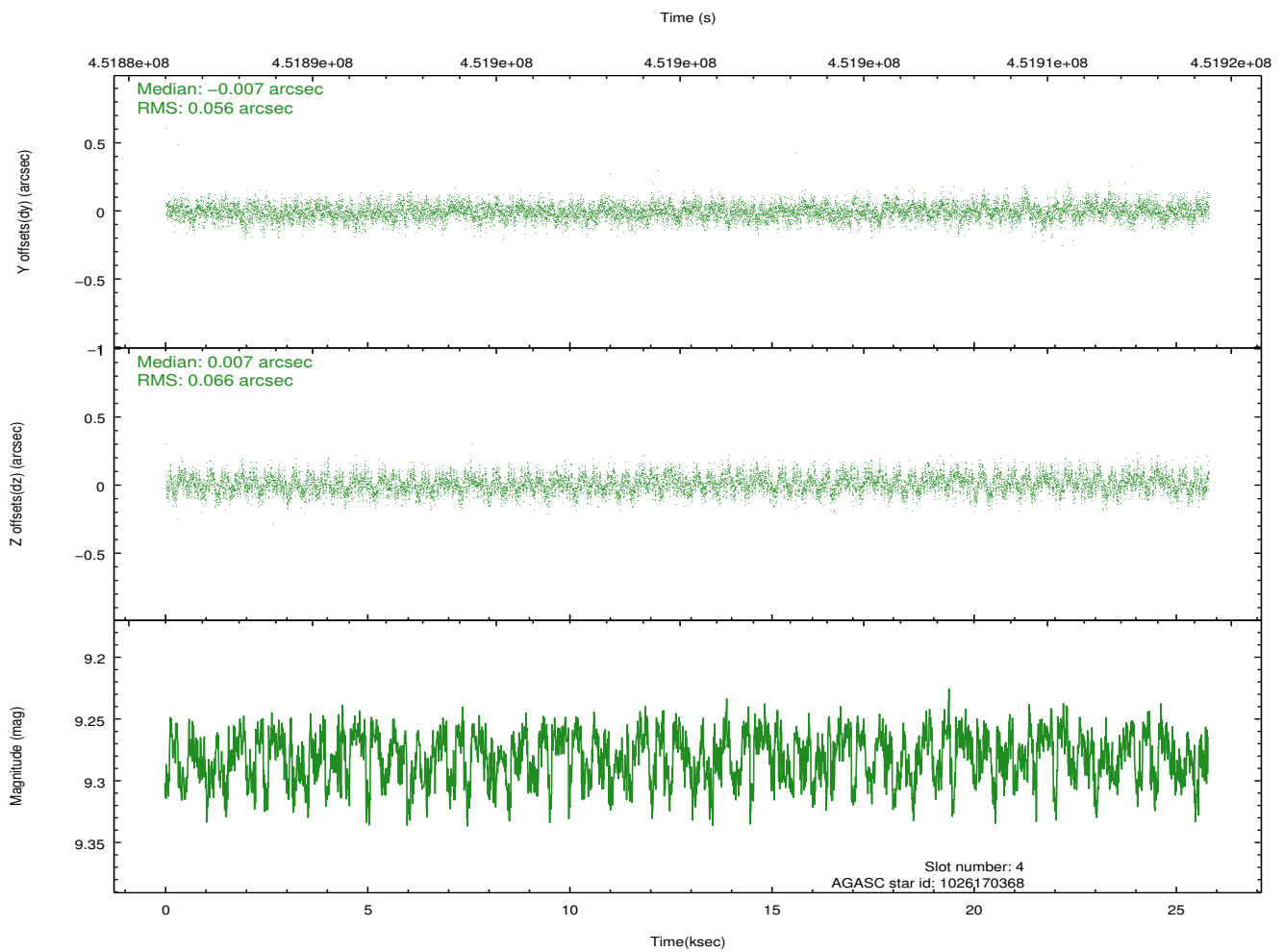
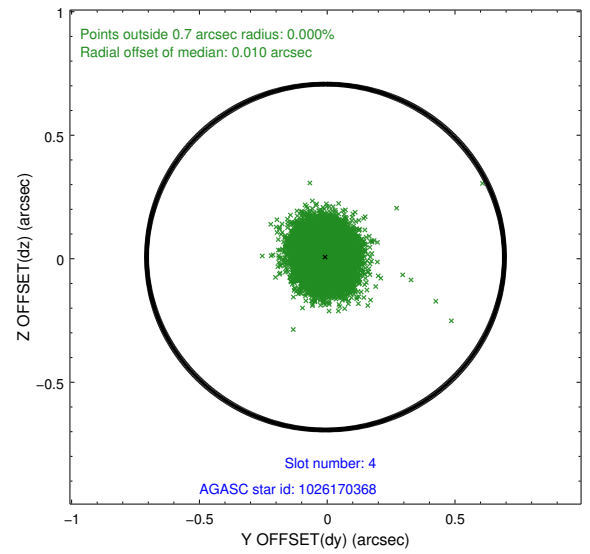
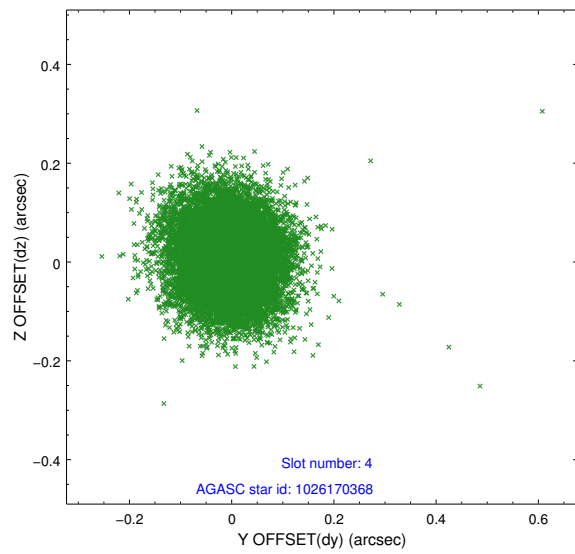
slot	status	id	mag	n_pts	med_dy	med_dz	dr1	dr2	ra	dec	mean_y	mean_z
0	FID	ACIS-I-1	7.05	6293	0.081	-0.030	0.015	0.022	0.000000	0.000000	929.18	-836.06
1	FID	ACIS-I-5	7.03	6293	-0.205	0.090	0.016	0.026	0.000000	0.000000	-1819.14	1061.51
2	FID	ACIS-I-6	7.04	6292	0.034	0.010	0.009	0.014	0.000000	0.000000	394.57	1706.05
3	GUIDE	1026163728	9.18	12577	-0.144	-0.120	0.092	0.148	225.377558	-41.568164	558.97	1406.96
4	GUIDE	1026170368	9.28	12573	-0.007	0.007	0.092	0.149	225.763429	-42.291155	386.74	-1387.68
5	GUIDE	1026170800	9.00	12583	0.140	0.103	0.092	0.147	225.400024	-42.381702	-627.17	-1271.02
6	GUIDE	1026185256	9.30	12578	-0.114	0.004	0.115	0.188	226.095983	-42.018643	1609.37	-883.10
7	GUIDE	1026035416	9.62	12570	0.128	0.006	0.109	0.179	224.848895	-41.855673	-1164.58	1065.92

2.4 Star Slots

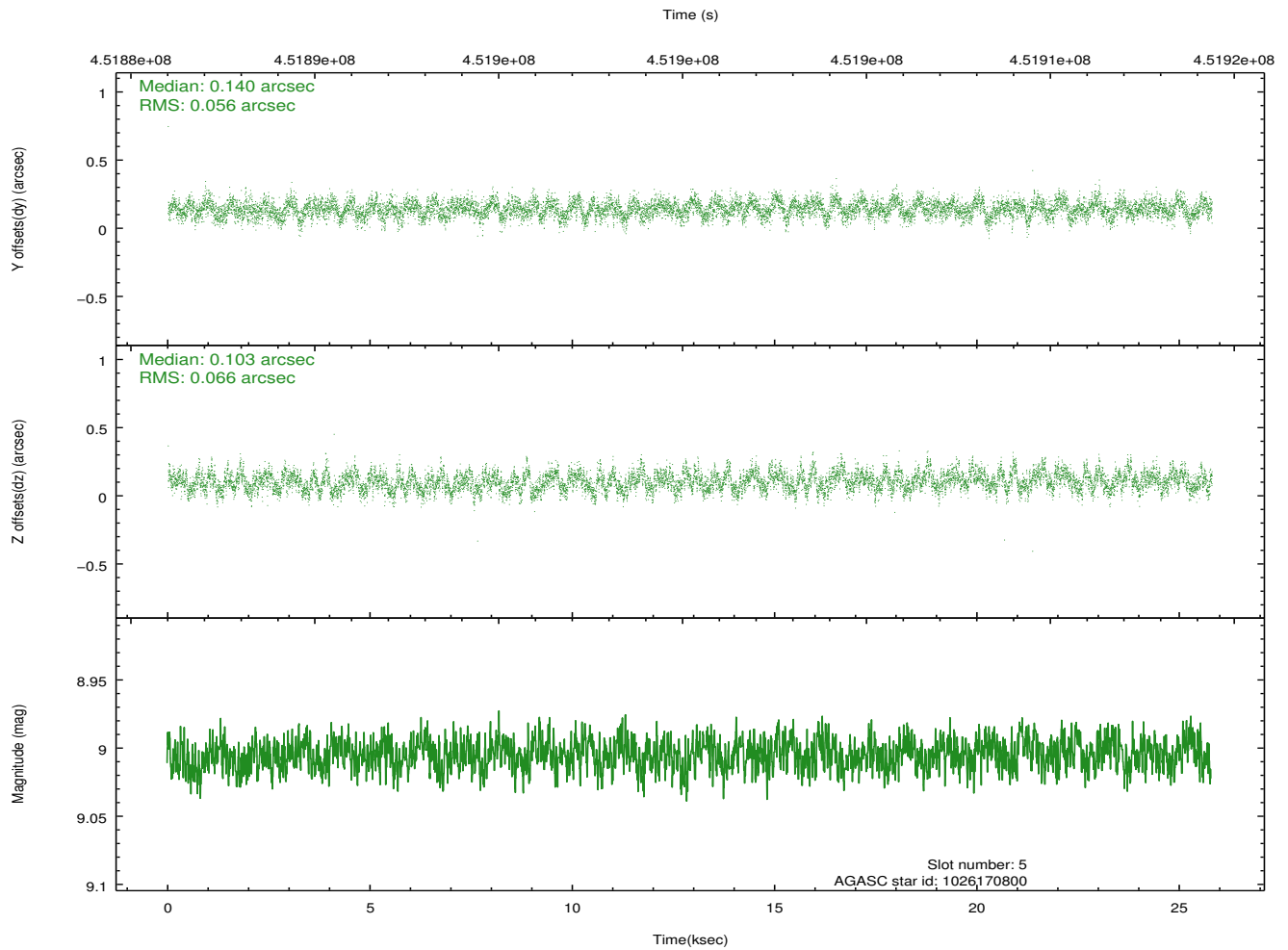
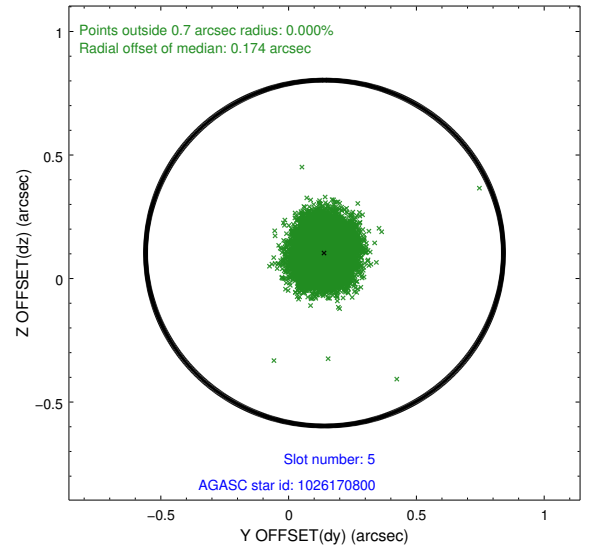
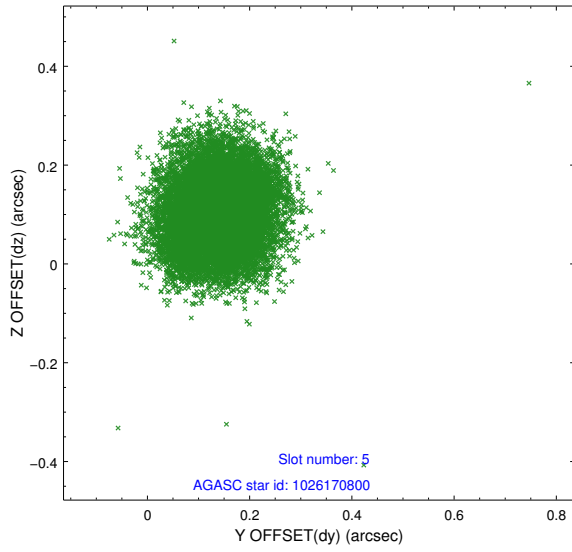
2.4.1 Slot 3



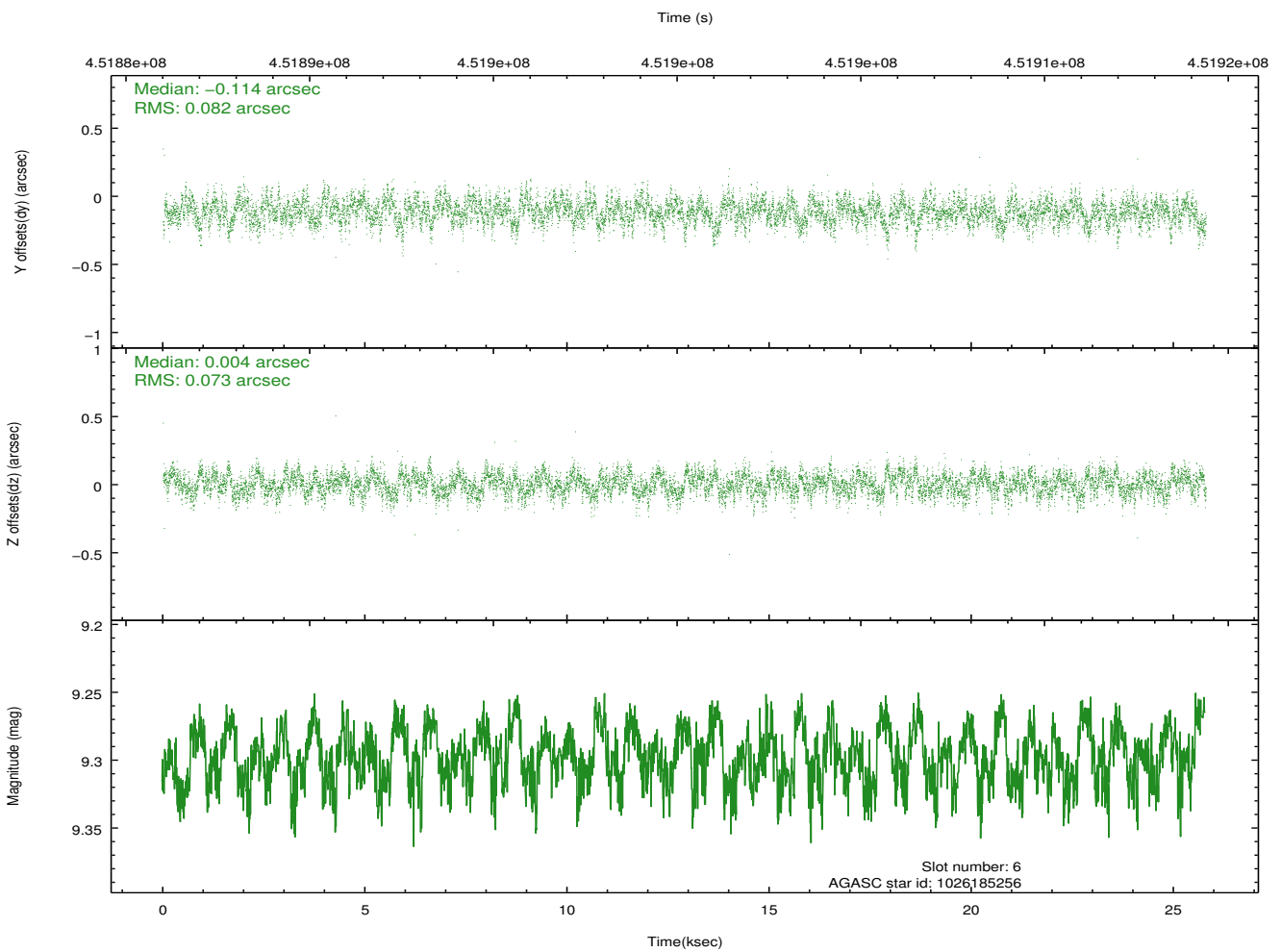
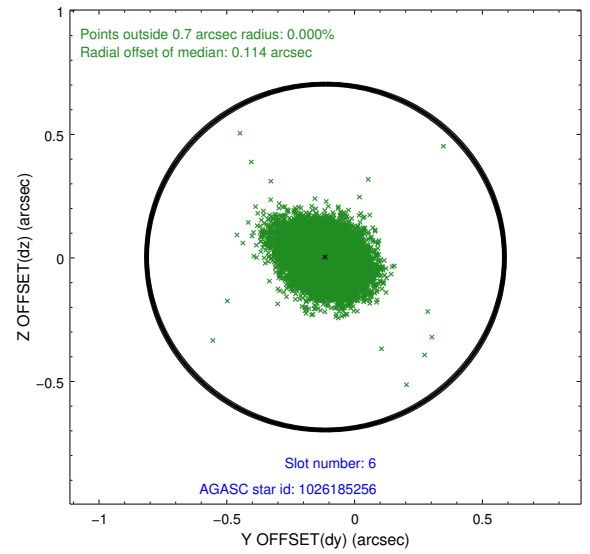
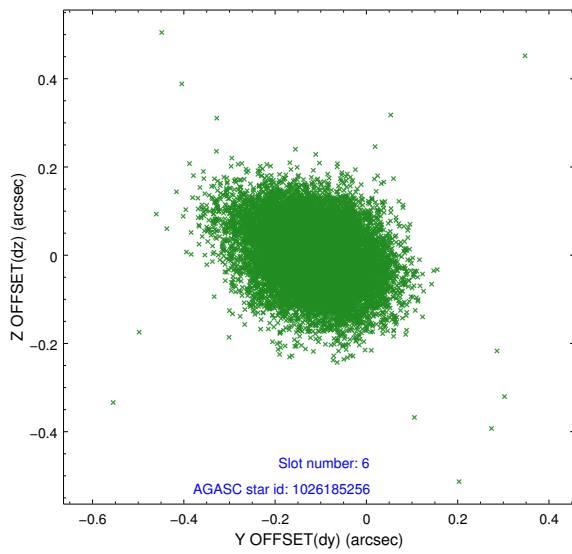
2.4.2 Slot 4



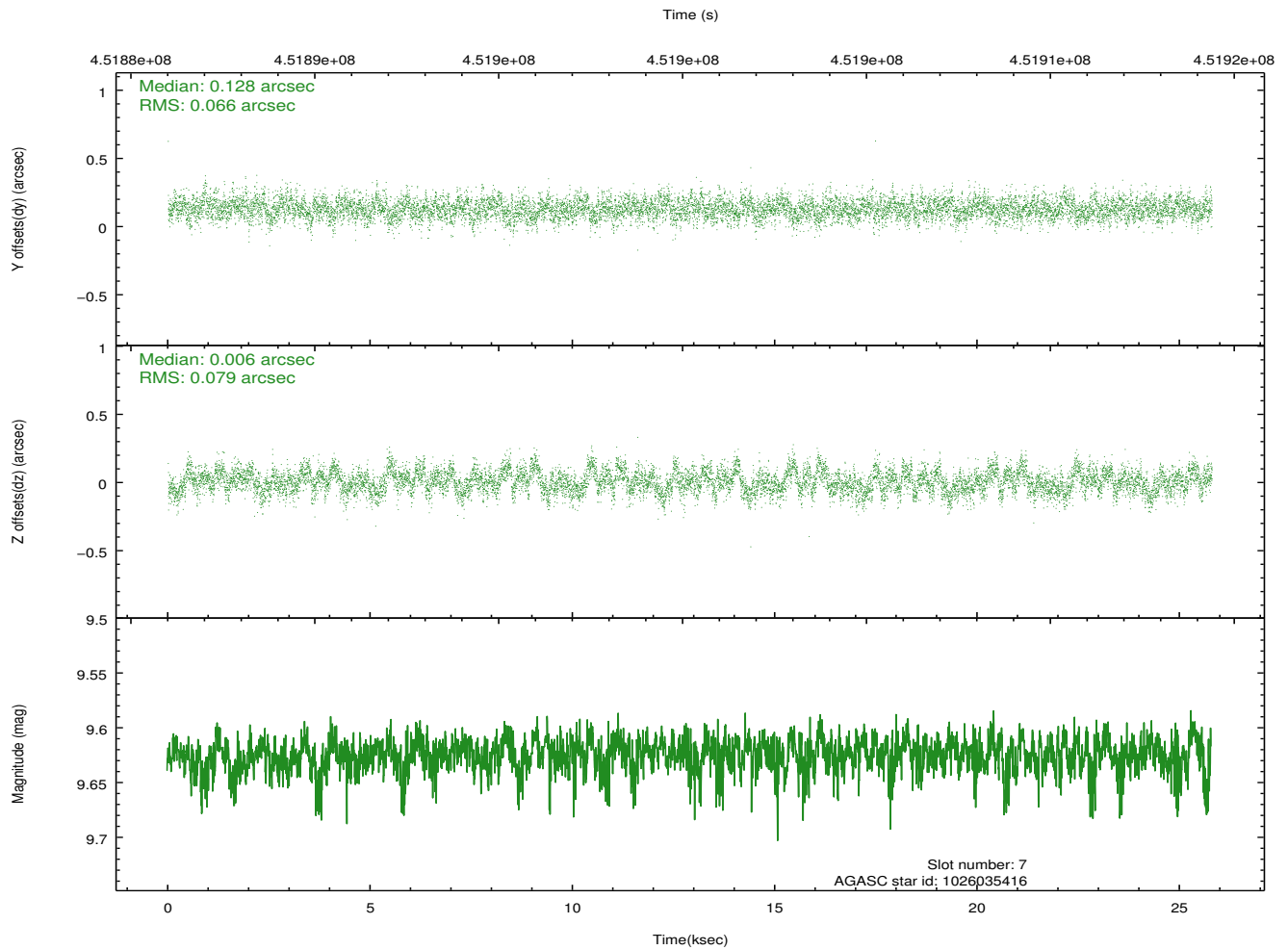
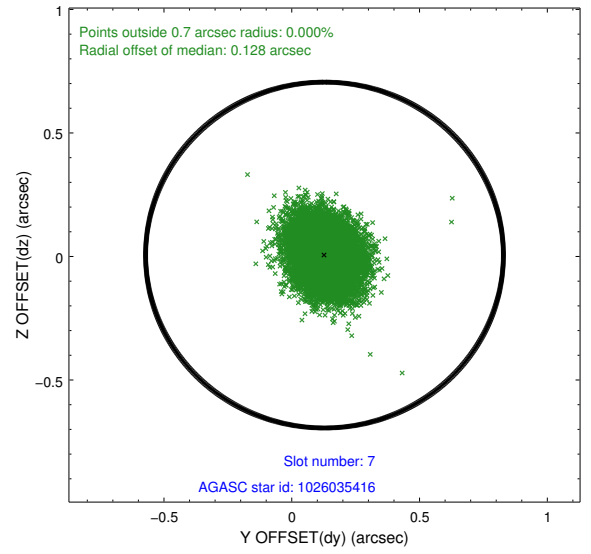
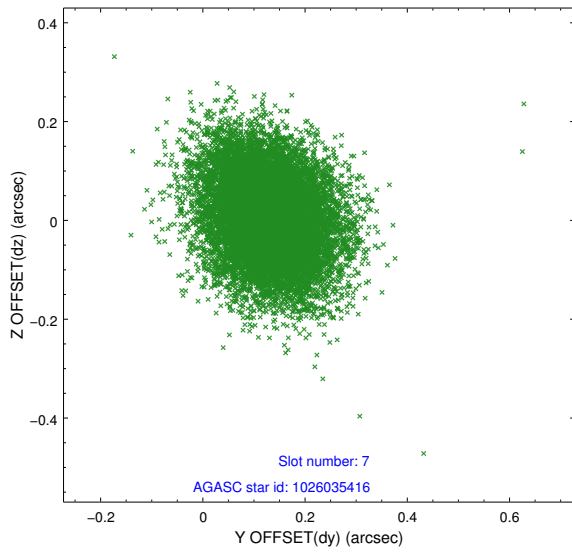
2.4.3 Slot 5



2.4.4 Slot 6

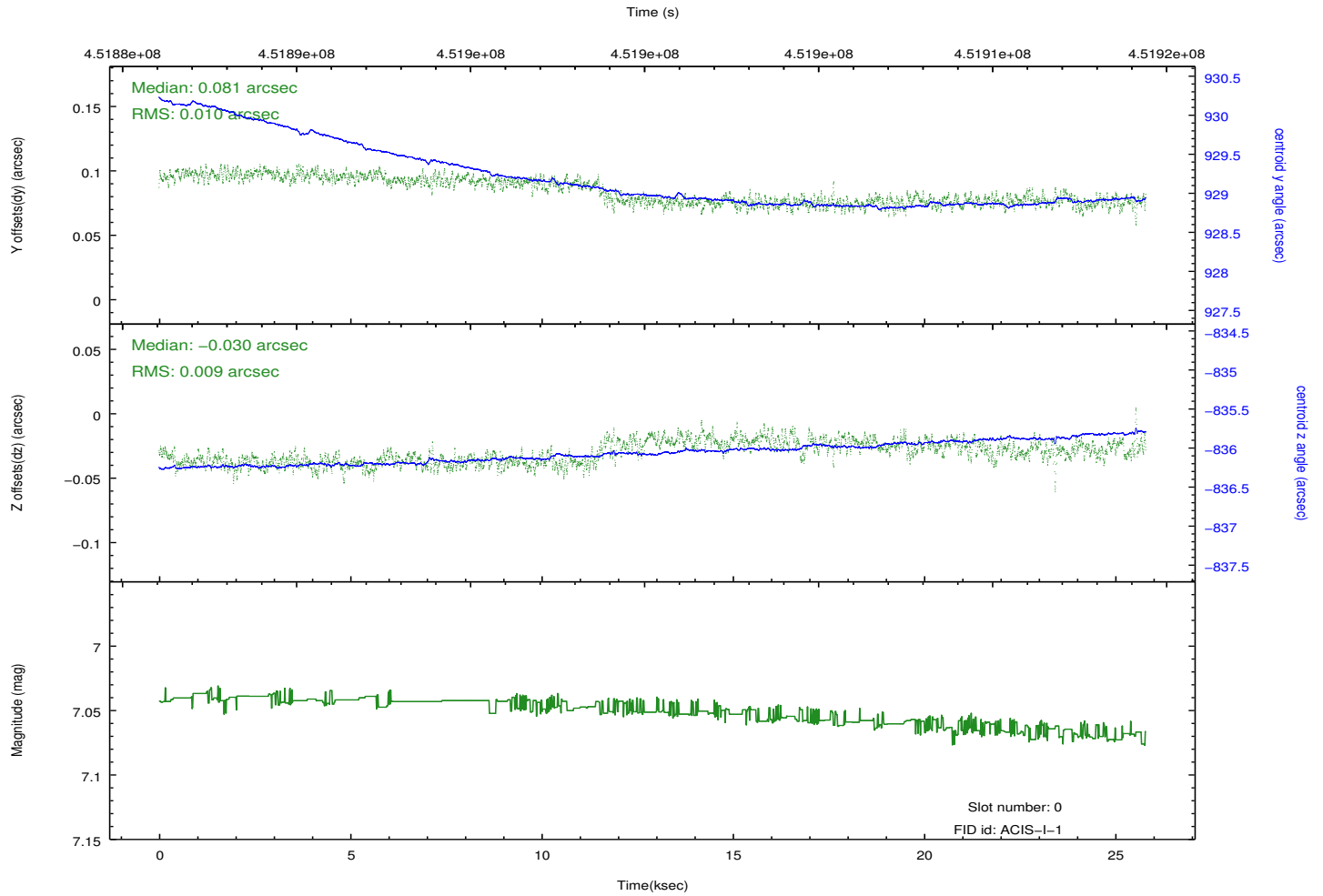
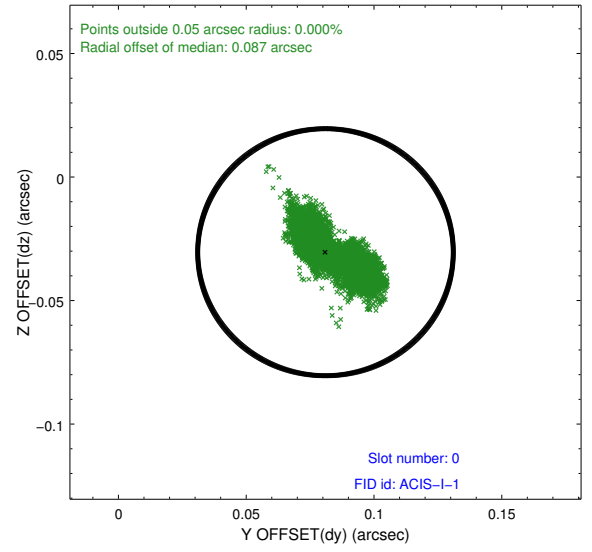
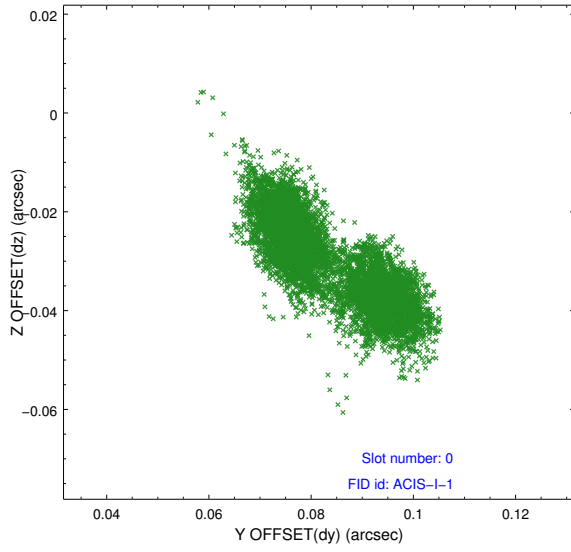


2.4.5 Slot 7

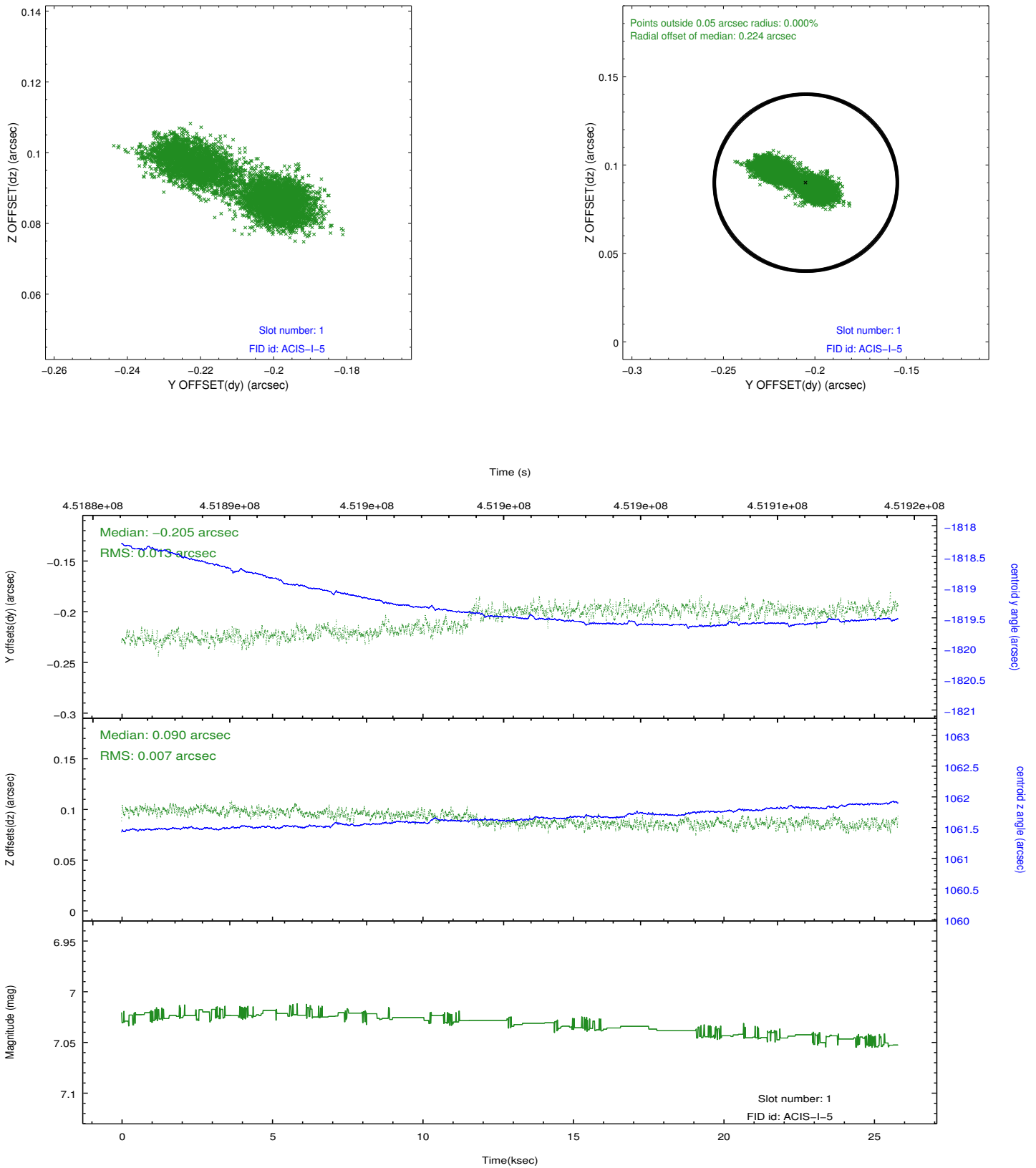


2.5 FID Slots

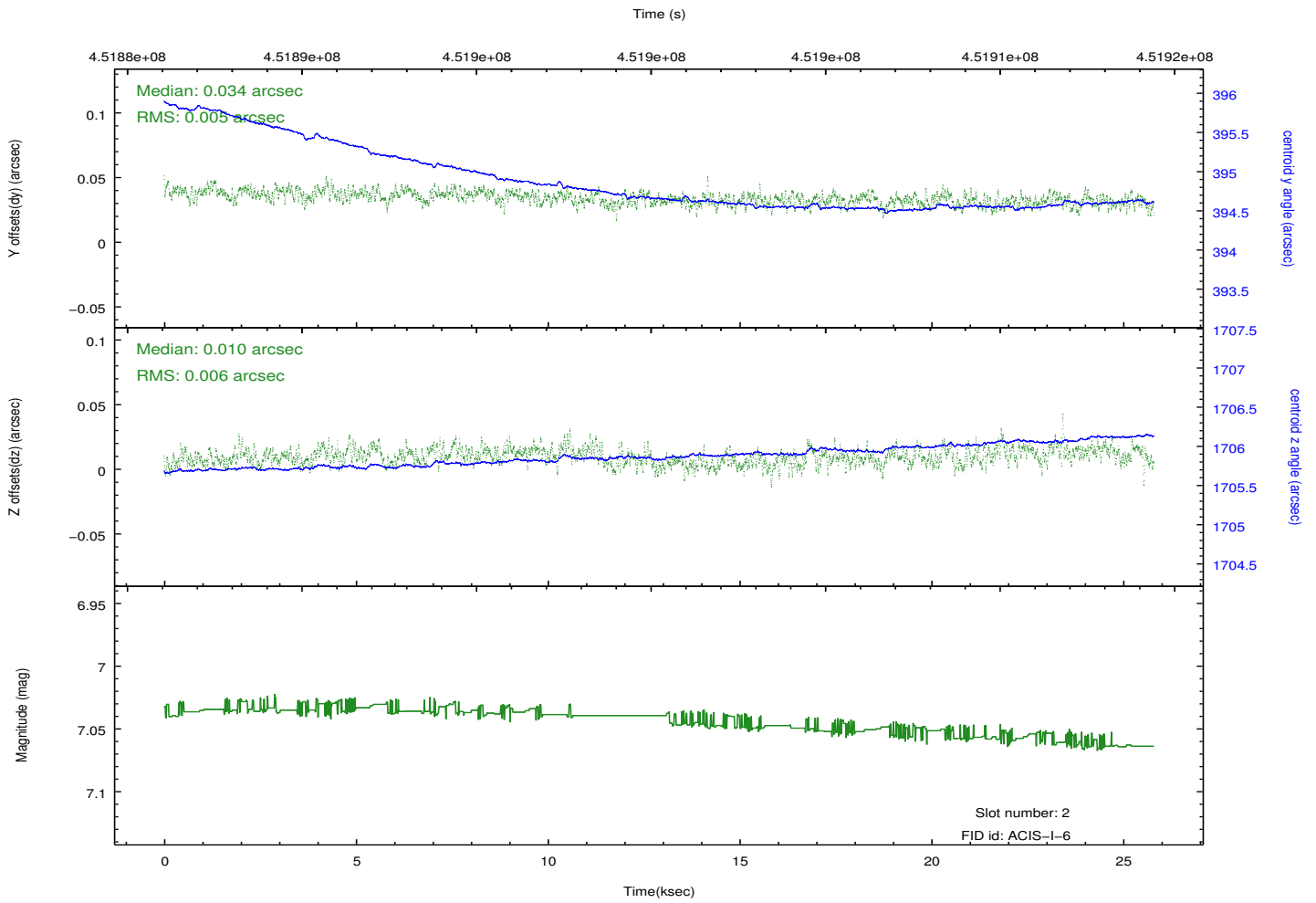
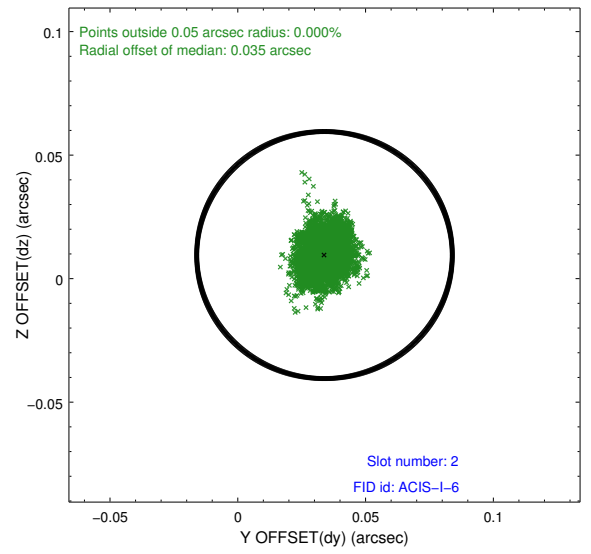
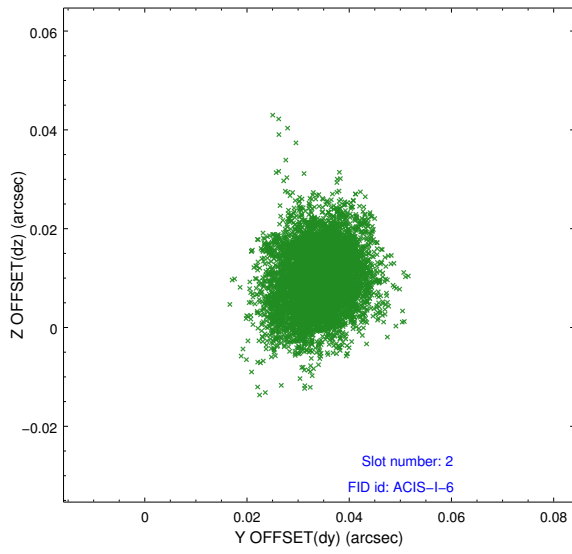
2.5.1 Slot 0



2.5.2 Slot 1



2.5.3 Slot 2



A Summary

A.1 Status

V&V Scientist	Joy Nichols
V&V Date (YYYY-MM-DD)	2012.04.30
V&V Edition	1
V&V Disposition and Status	OK
V&V Charge Time	25.726900197864

A.2 Comments