

V&V Reference Report

L2 ASCDS Version : 10.2.4

Observation 16044 - L2 Version 1
Chandra X-Ray Center

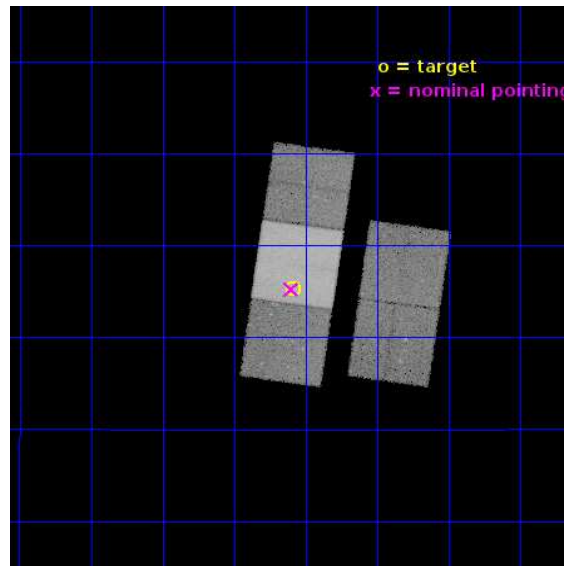
L2 Processing Date : Oct 13 2014

Contents

1	Front	2
2	OBI	3
2.1	OBI	3
2.1.1	Images	3
2.1.2	Bias	3
2.1.3	Parameters	4
2.1.4	Events	4
2.2	Compared Parameters	5
2.3	Aspect	6
2.4	Star Slots	9
2.4.1	Slot 3	9
2.4.2	Slot 4	10
2.4.3	Slot 5	11
2.4.4	Slot 6	12
2.4.5	Slot 7	13
2.5	FID Slots	14
2.5.1	Slot 0	14
2.5.2	Slot 1	15
2.5.3	Slot 2	16
A	Summary	17
A.1	Status	17
A.2	Comments	17

1 Front

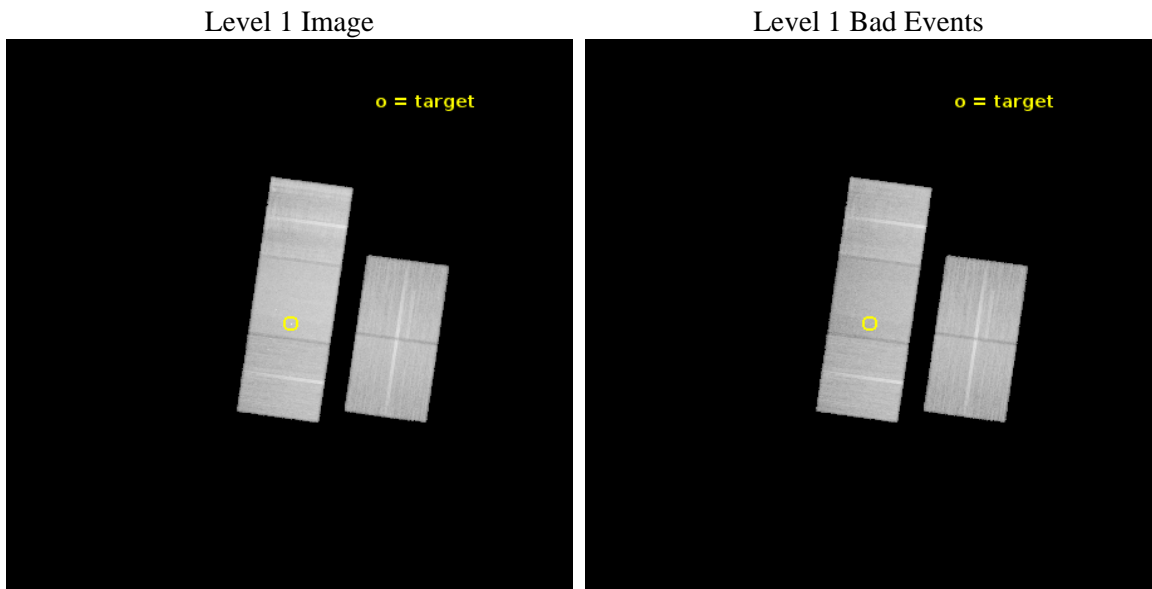
seq_num	702938	Sequence number
obs_id	16044	Observation id
title	Jet-driven outflows in radio galaxies	Proposal title
observer	Dr Martin Hardcastle	Principal investigator
object	3C459	Source name
dtcycle	0	
cycle	P	events from which exps? Prim/Second/Both
ra_targ	349.146667	Observer's specified target RA [deg]
dec_targ	4.088389	Observer's specified target Dec [deg]
ra_nom	349.14948258273	Nominal RA [deg]
dec_nom	4.0870487734881	Nominal Dec [deg]
roll_nom	278.04355308176	Nominal Roll [deg]
revision	1	Processing version of data
ontime	59960.200461149	Sum of GTIs [s]
livetime	59176.776300067	Livetime [s]
ontime2	59953.918350399	Sum of GTIs [s]
ontime3	59957.059430718	Sum of GTIs [s]
ontime6	59960.200461149	Sum of GTIs [s]
ontime7	59960.200461149	Sum of GTIs [s]
ontime8	59957.059400916	Sum of GTIs [s]
l2events	299776	Number of level 2 events



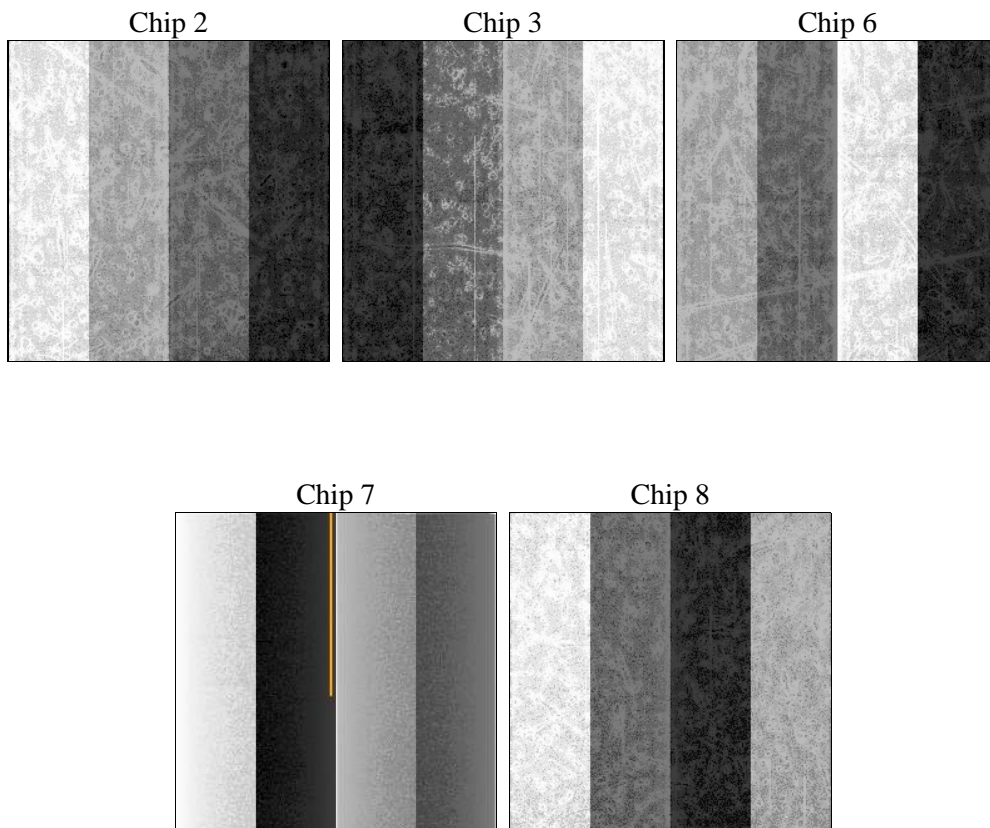
2 OBI

2.1 OBI

2.1.1 Images



2.1.2 Bias



2.1.3 Parameters

obi_num	0	Obi number	sched_exp_time	59894.000000	[s] Scheduled observation exposure time
ascdsver	10.2.4	Processing system revision	ontime	59960.200461149	Sum of GTIs [s]
caldsver	4.6.3	 	ontime2	59953.918350399	Sum of GTIs [s]
date	2014-10-13T12:31:15	Date and time of file creation	ontime3	59957.059430718	Sum of GTIs [s]
revision	1	Processing version of data	ontime6	59960.200461149	Sum of GTIs [s]
			ontime7	59960.200461149	Sum of GTIs [s]
			ontime8	59957.059400916	Sum of GTIs [s]
			l1events	1737212	Number of level 1 events

2.1.4 Events

	ccd 2	ccd 3	ccd 6	ccd 7	ccd 8
level 1 events	293015	298652	317578	418049	409918
rejected events	259306	265760	279908	239173	301004
rejected %	88%	88%	88%	57%	73%

	ccd 2	ccd 3	ccd 6	ccd 7	ccd 8
grade 0 events	11727	11286	12513	15159	30944
	4%	3%	3%	3%	7%
grade 1 events	160	187	171	513	309
	0%	0%	0%	0%	0%
grade 2 events	8052	7286	8716	37169	25951
	2%	2%	2%	8%	6%
grade 3 events	3526	3512	3715	14696	11579
	1%	1%	1%	3%	2%
grade 4 events	3605	3587	3707	14531	10882
	1%	1%	1%	3%	2%
grade 5 events	13492	16182	15946	42619	23118
	4%	5%	5%	10%	5%
grade 6 events	6801	7223	9020	97332	29559
	2%	2%	2%	23%	7%
grade 7 events	245652	249389	263790	196030	277576
	83%	83%	83%	46%	67%

2.2 Compared Parameters

Parameter	Planned	Actual	Parameter	Planned	Actual
Instrument	ACIS	ACIS	Obspar format version number	7	7
Detector	ACIS-23678	ACIS-23678	Obspar file type	PREDICTED	ACTUAL
Grating	NONE	NONE	Obspar update status	NONE	UPDATED
Data mode	VFAINT	VFAINT	CCD I0 on	N	N
Observation mode	POINTING	POINTING	CCD I1 on	N	N
[deg] Pointing RA	349.132242	349.1494825827298	CCD I2 on	O3	Y
[deg] Pointing Dec	4.108435	4.087048773488142	CCD I3 on	O2	Y
[deg] Pointing Roll	277.888146	278.0435530817551	CCD S0 on	N	N
[mm] SIM focus pos	-0.684267	-0.6828225247311905	CCD S1 on	N	N
[mm] SIM defocus	0	0.001444936568705701	CCD S2 on	Y	Y
[mm] SIM translation stage pos	-190.132523	-190.1400660498719	CCD S3 on	Y	Y
[mm] SIM translation stage offset	0	0.00754346686406393	CCD S4 on	O1	Y
[s] Observation start time (MET)	529478470.184000	529477380.17587	CCD S5 on	N	N
Observation start date	2014-10-12T05:20:03	2014-10-12T05:03:00	Number of optional ACIS chips dropped	0	0
[s] Observation end time (MET)	529538364.184000	529539569.49182	On-chip summing requested	N	N
Observation end date	2014-10-12T21:58:17	2014-10-12T22:19:29	Subarray requested	NONE	NONE
Read mode	TIMED	TIMED	Alternating exposures requested	N	N
			[s] Primary exposure time	0.000000	3.1

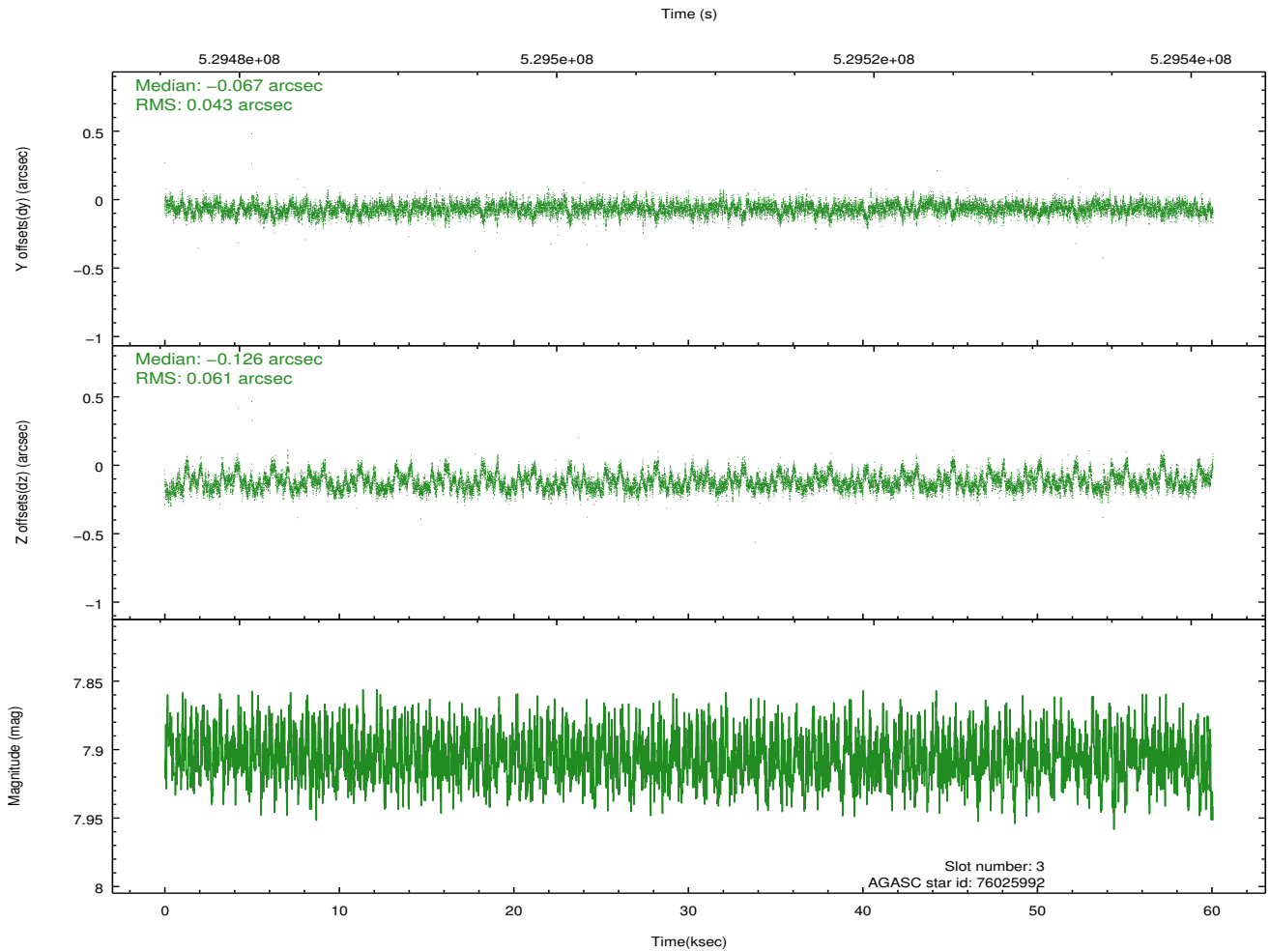
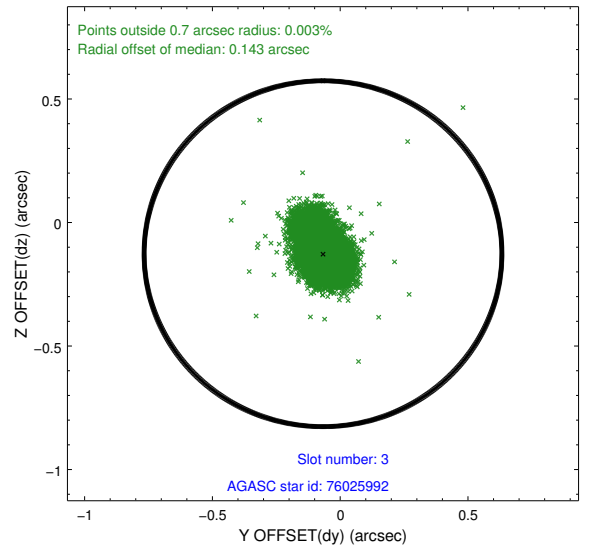
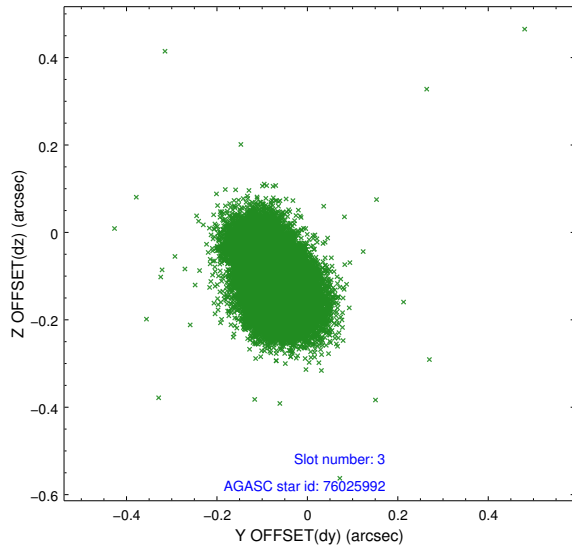
2.3 Aspect

Slot Statistics

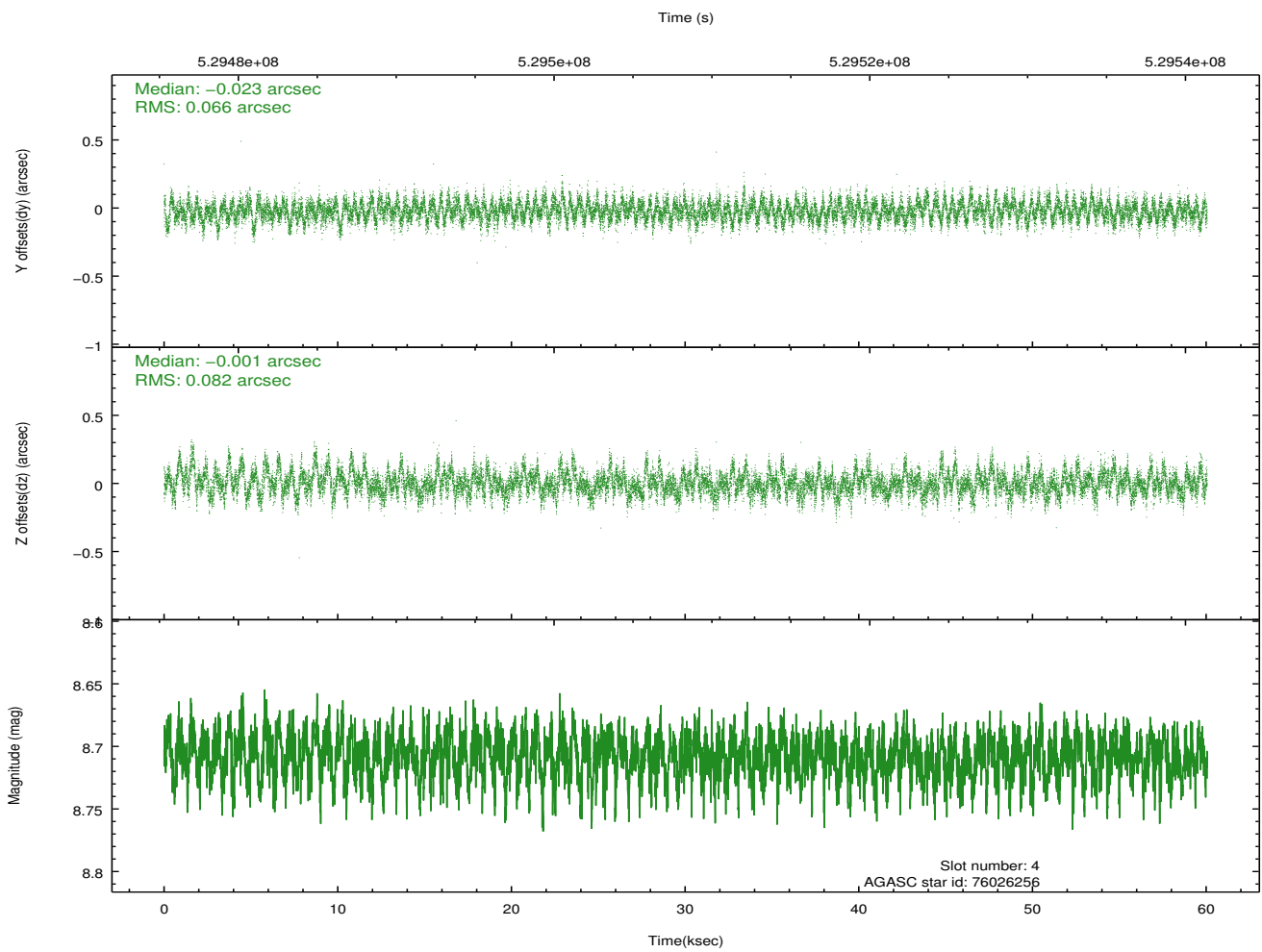
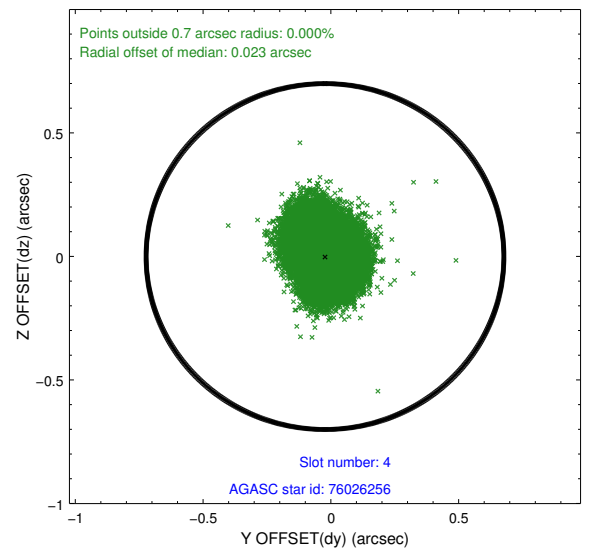
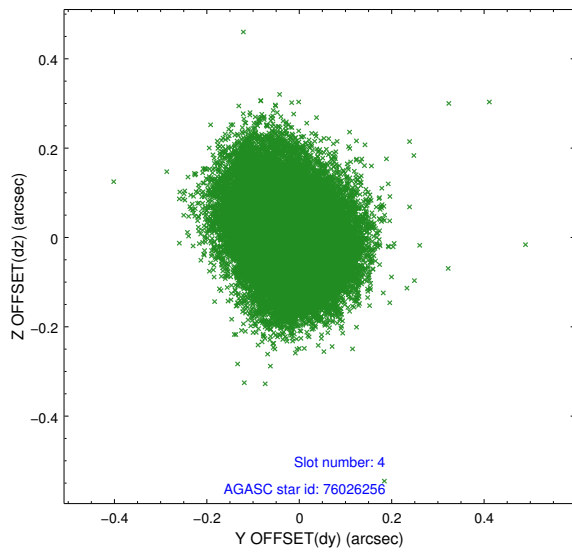
slot	status	id	mag	n_pts	med_dy	med_dz	dr1	dr2	ra	dec	mean_y	mean_z
0	FID	ACIS-S-1	7.11	14648	0.082	-0.024	0.024	0.066	0.000000	0.000000	920.04	-1736.76
1	FID	ACIS-S-5	7.14	14648	-0.224	0.039	0.033	0.069	0.000000	0.000000	-1829.30	160.86
2	FID	ACIS-S-6	7.25	14648	0.117	-0.001	0.062	0.074	0.000000	0.000000	385.62	804.78
3	GUIDE	76025992	7.90	29290	-0.067	-0.126	0.076	0.135	349.212168	3.945484	620.78	204.06
4	GUIDE	76026256	8.71	29281	-0.023	-0.001	0.111	0.184	349.252062	4.461253	-1198.50	600.52
5	GUIDE	76027832	9.27	29286	-0.027	-0.076	0.150	0.232	349.314522	3.617945	1840.25	407.12
6	GUIDE	76027872	9.05	29276	0.018	0.025	0.131	0.205	349.328073	4.451723	-1127.54	866.16
7	GUIDE	76029928	9.65	29255	0.095	0.168	0.213	0.320	348.752949	3.944188	399.07	-1429.37

2.4 Star Slots

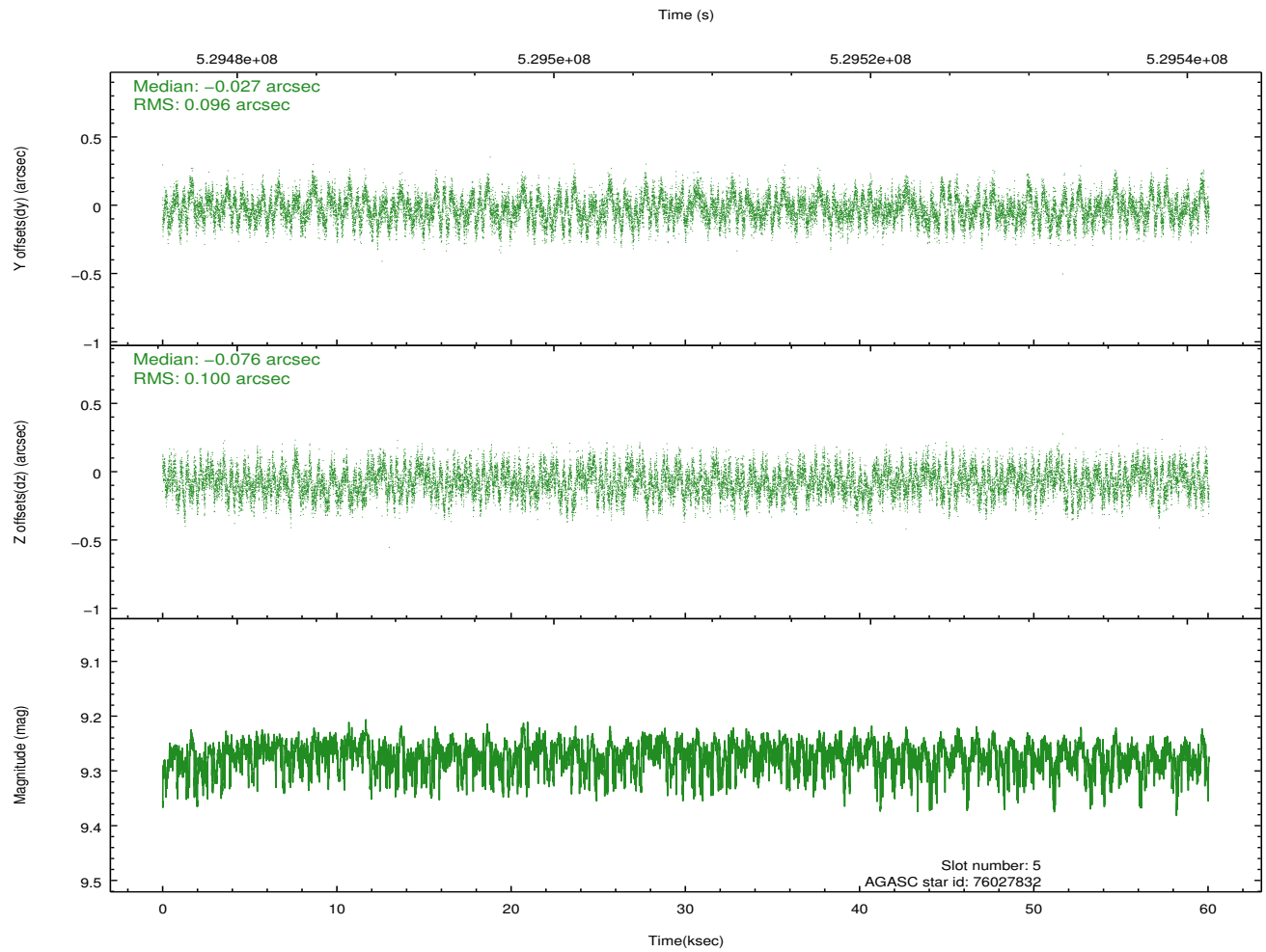
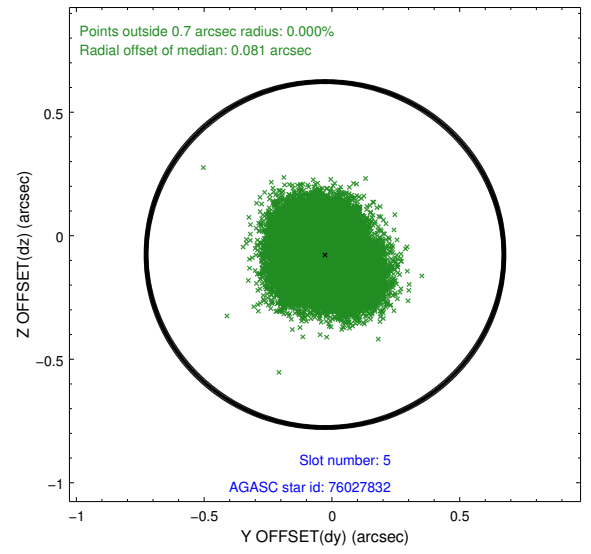
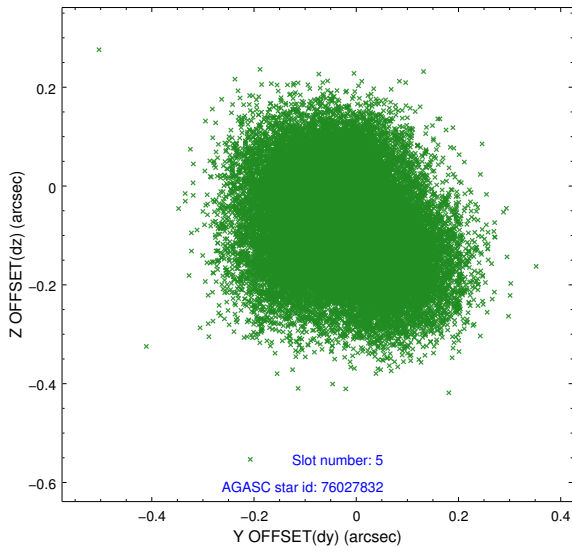
2.4.1 Slot 3



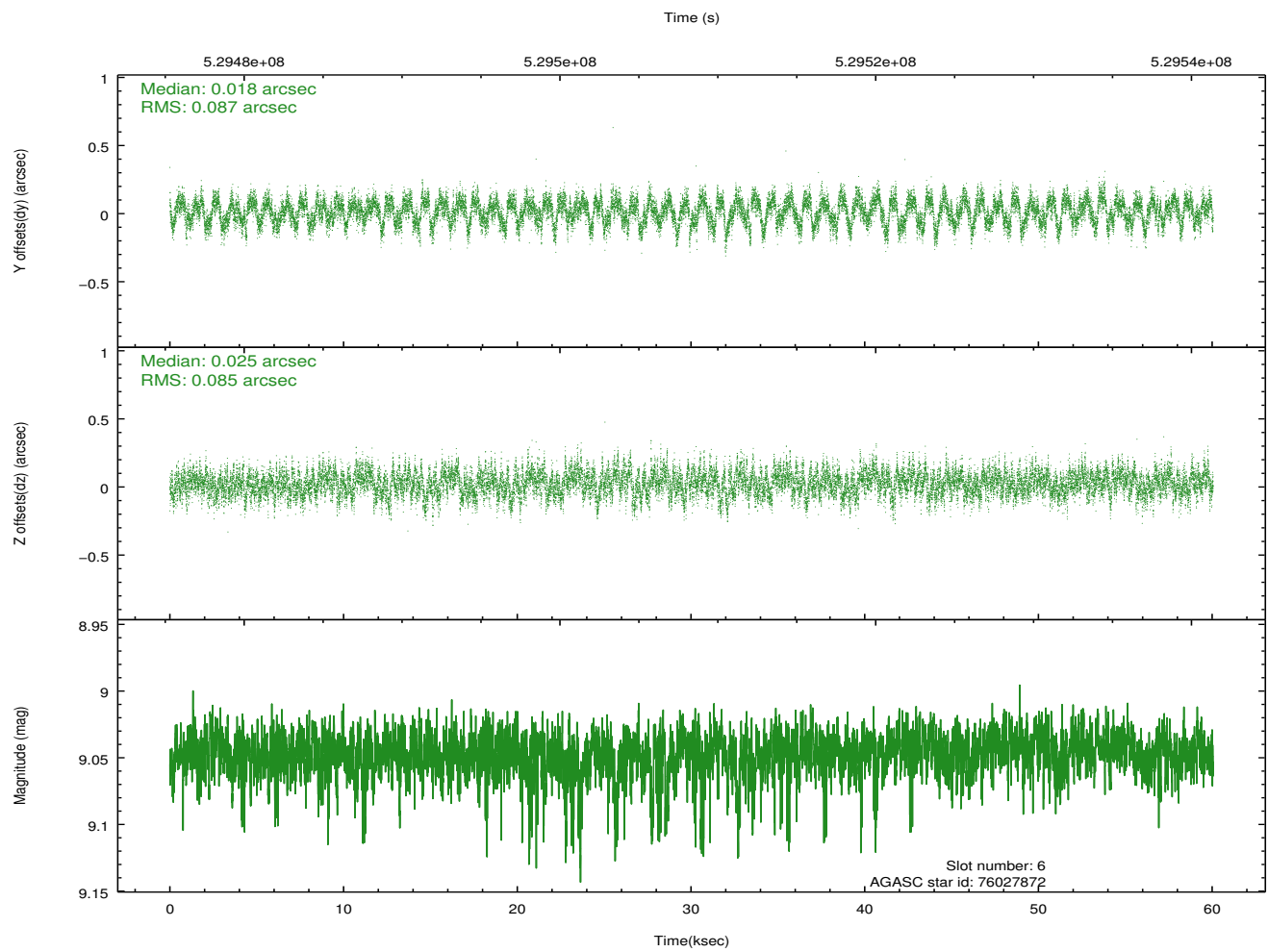
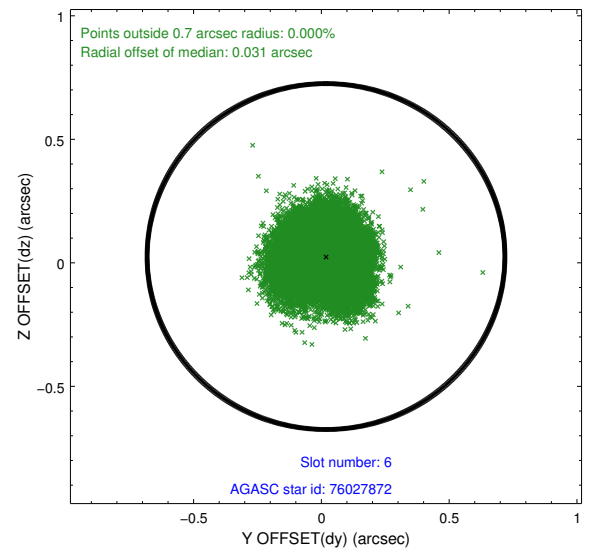
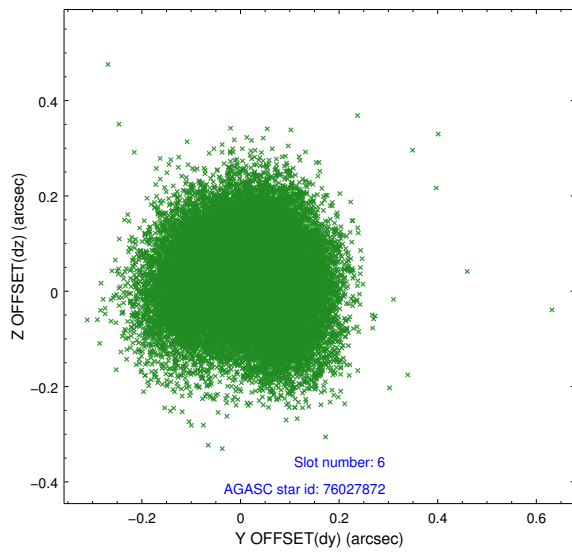
2.4.2 Slot 4



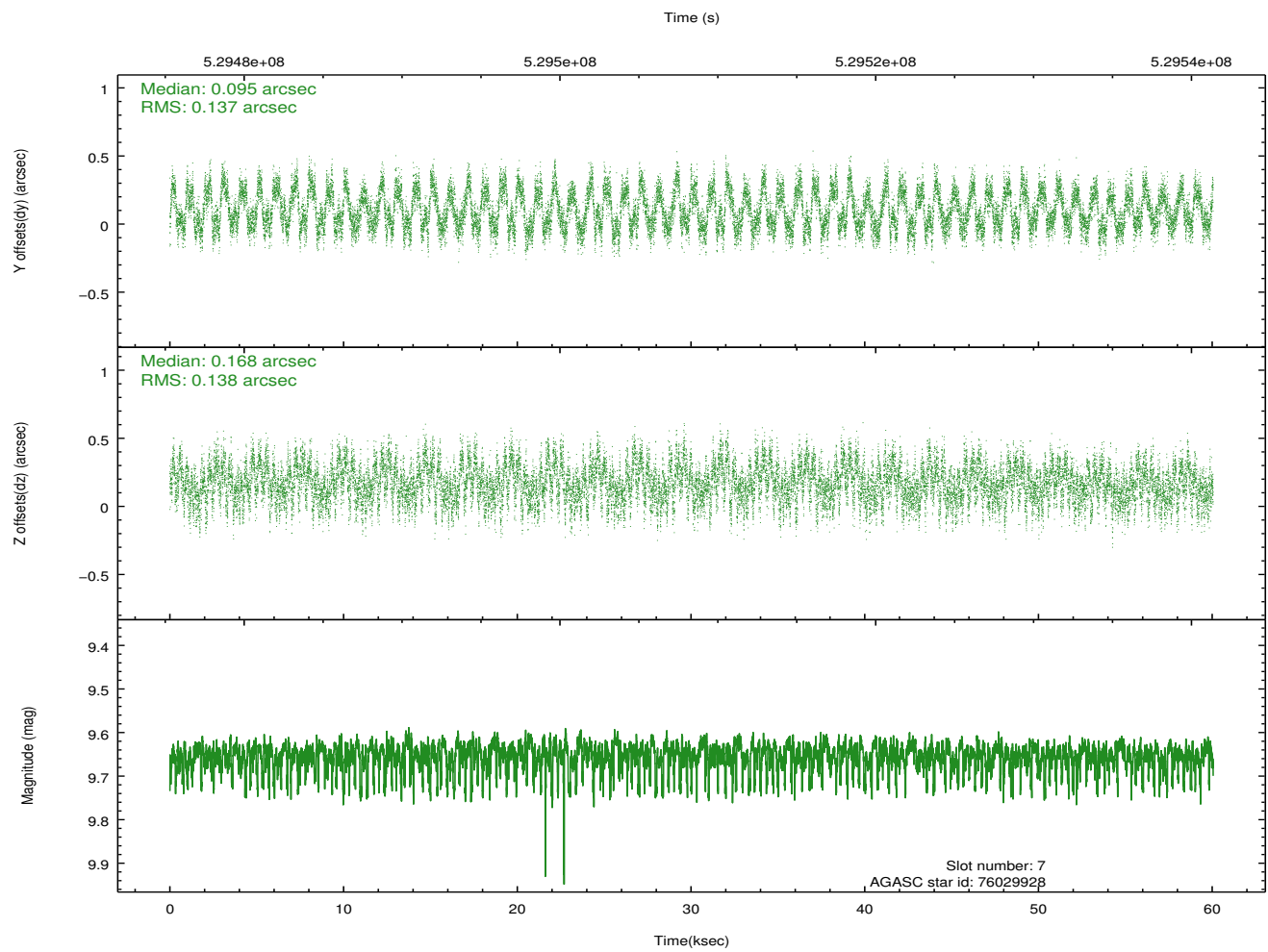
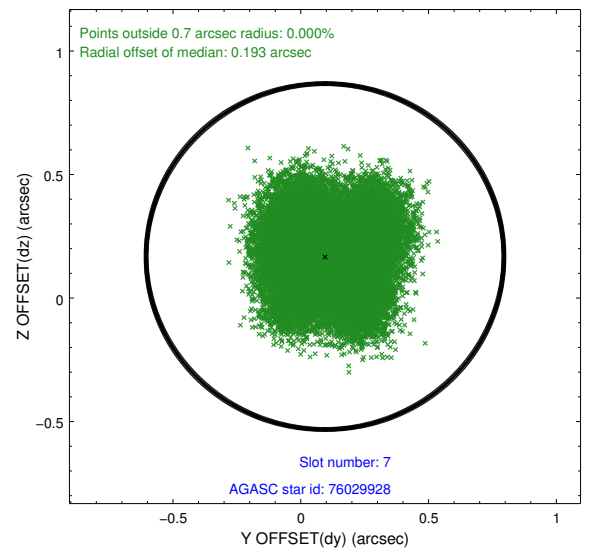
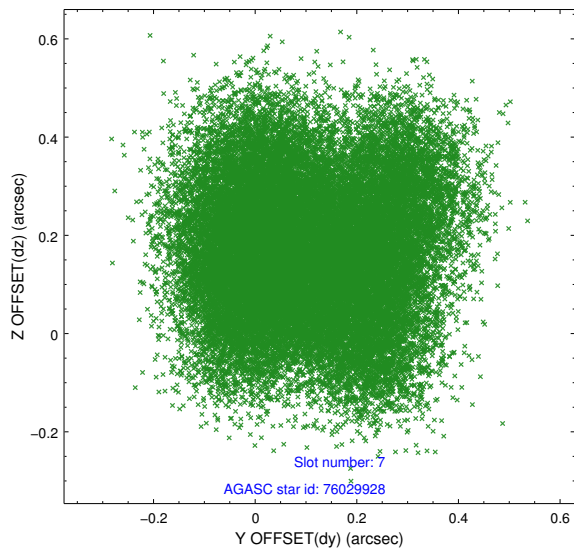
2.4.3 Slot 5



2.4.4 Slot 6

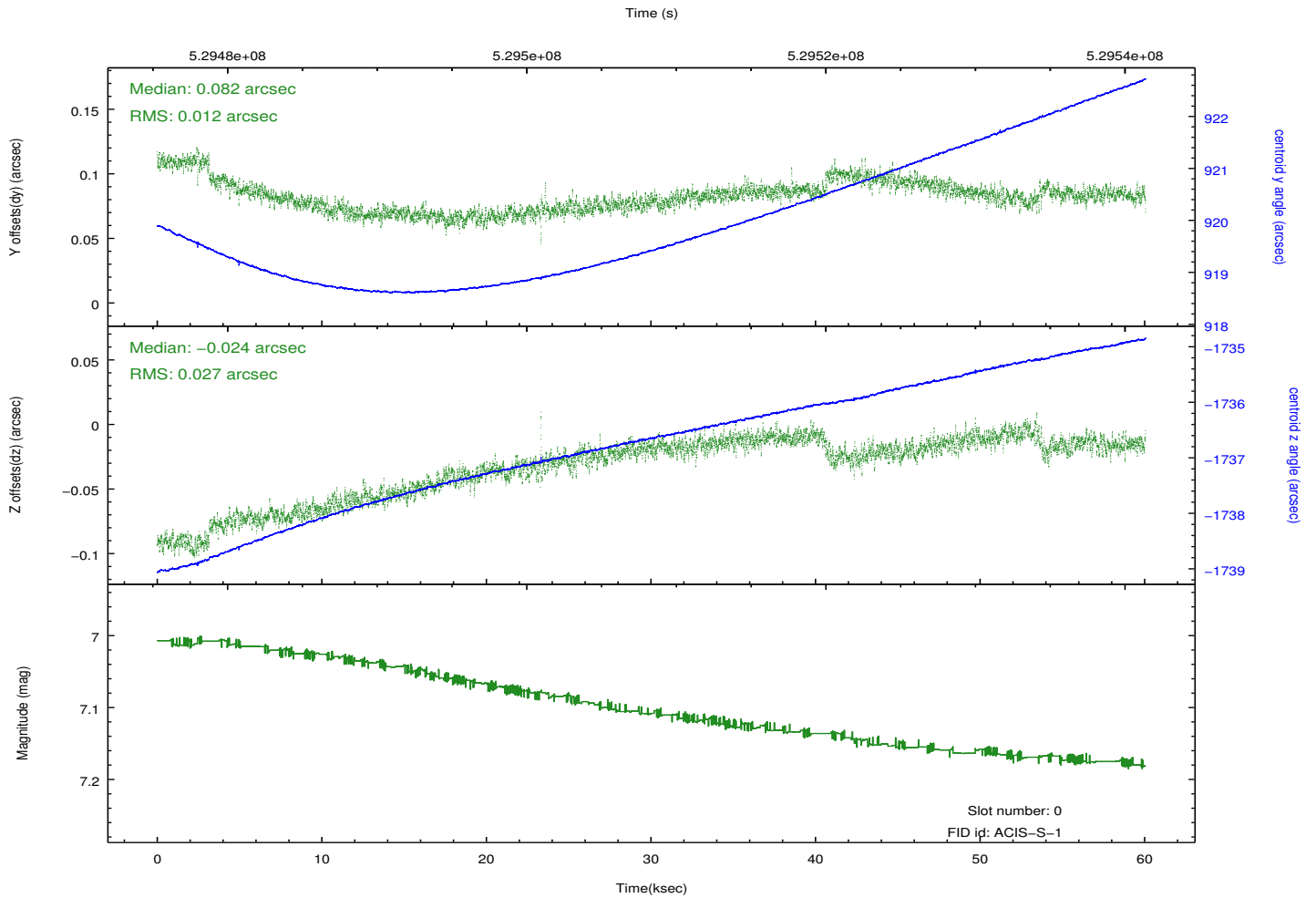
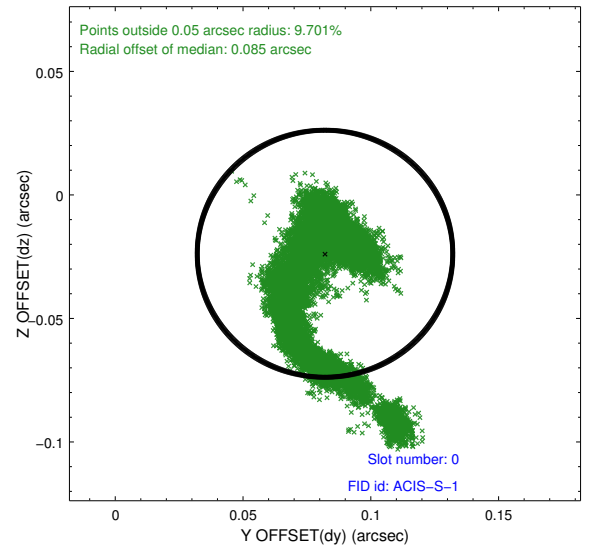
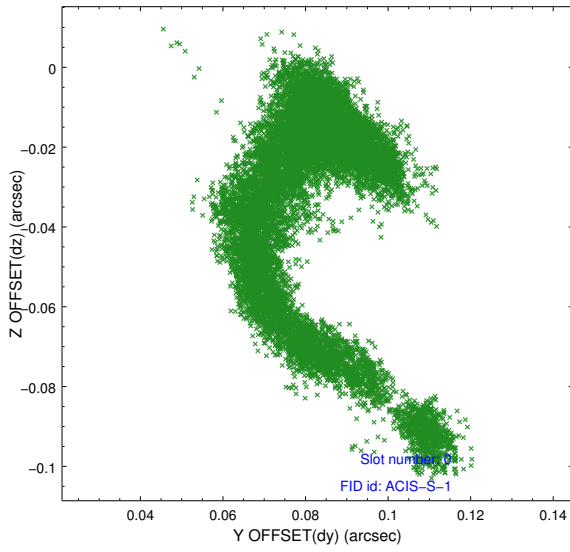


2.4.5 Slot 7

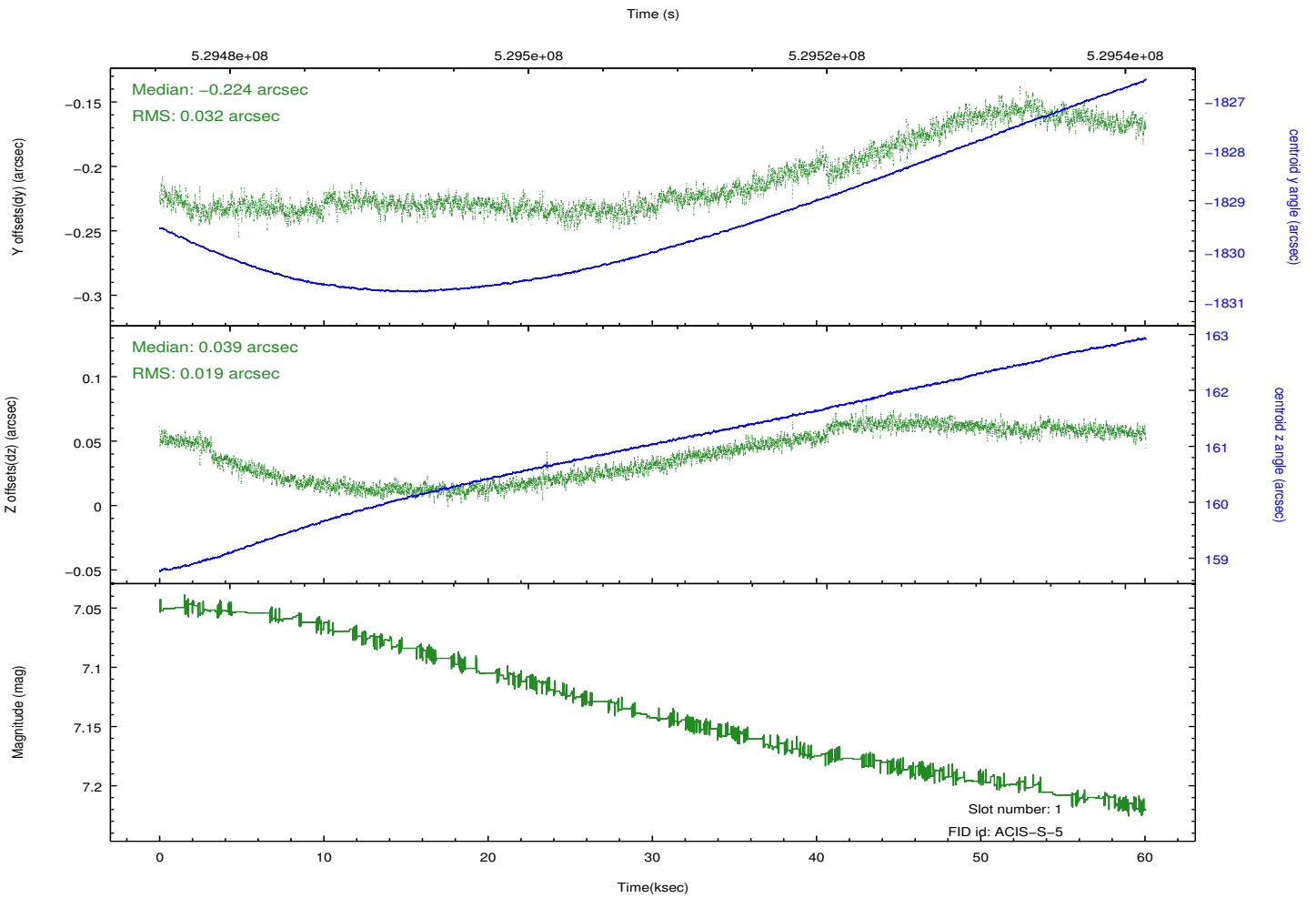
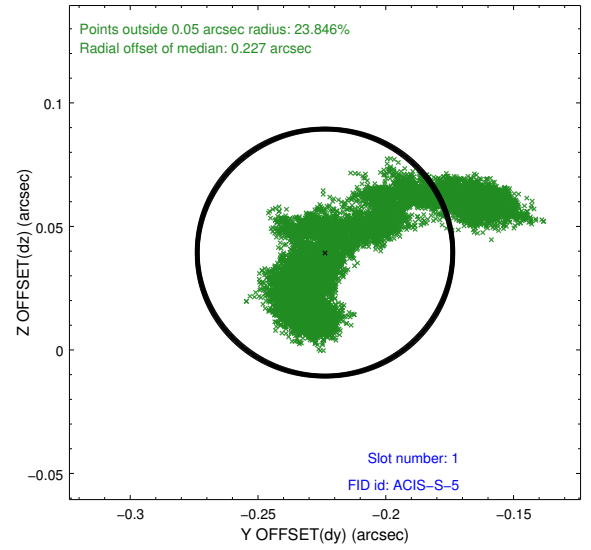
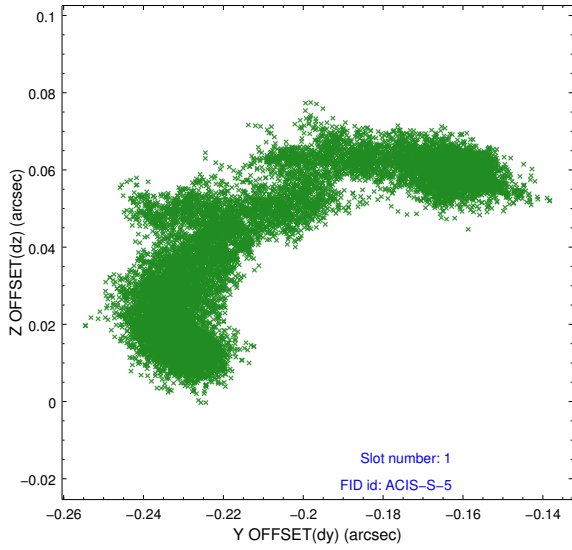


2.5 FID Slots

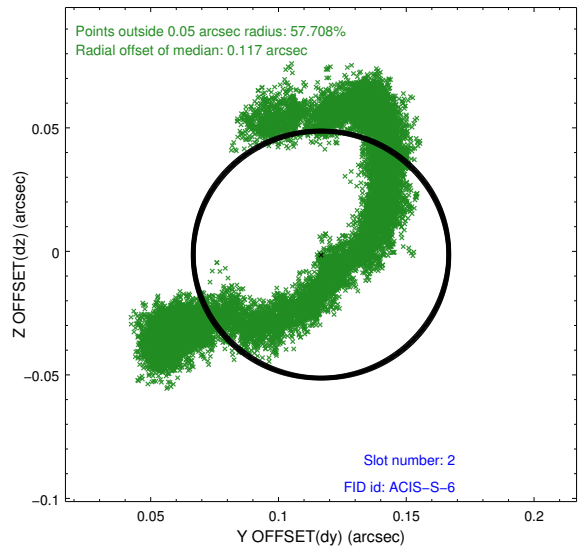
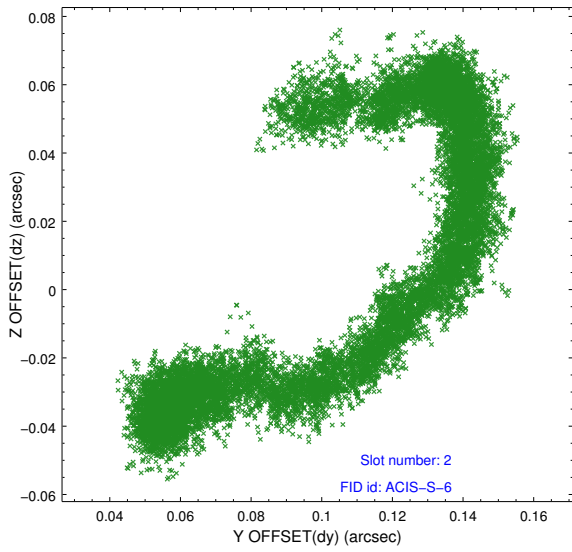
2.5.1 Slot 0



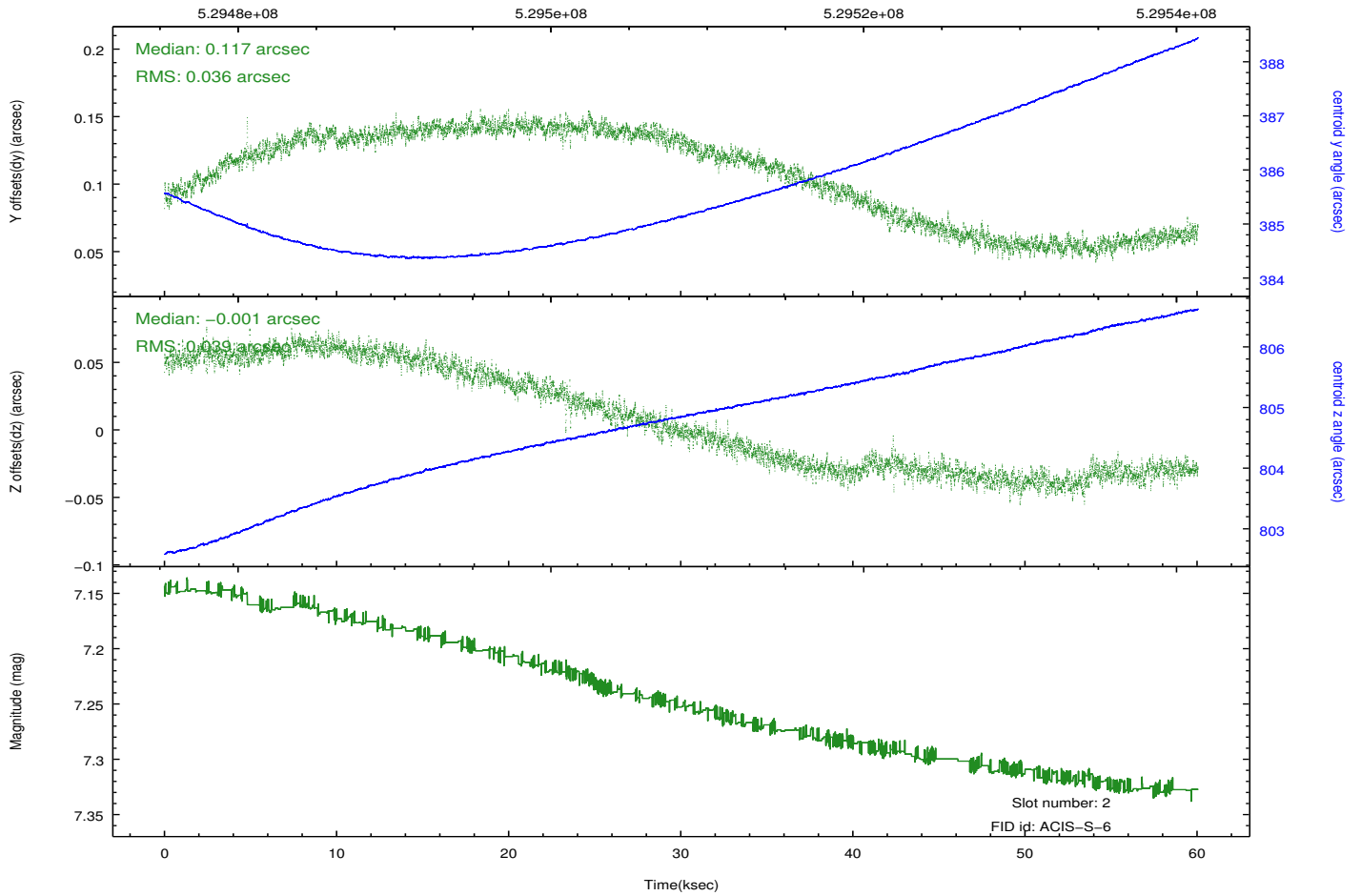
2.5.2 Slot 1



2.5.3 Slot 2



Time (s)



A Summary

A.1 Status

V&V Scientist	Beth Sundheim
V&V Date (YYYY-MM-DD)	2014.10.13
V&V Edition	1
V&V Disposition and Status	OK
V&V Charge Time	59.960200461149

A.2 Comments