

V&V Reference Report

L2 ASCDS Version : 10.3.3

Observation 17584 - L2 Version 1
Chandra X-Ray Center

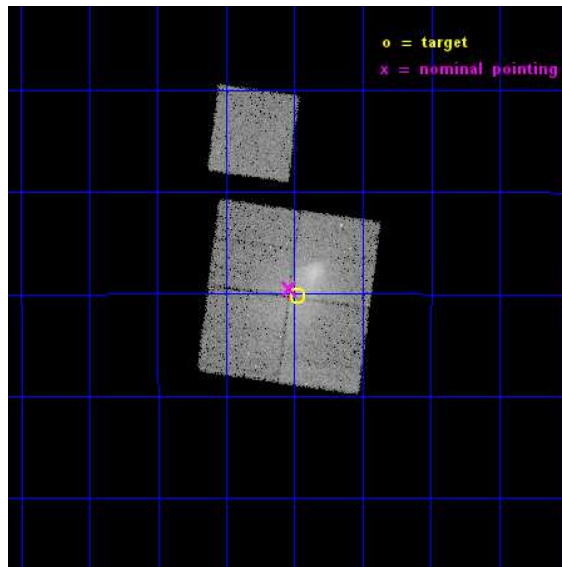
L2 Processing Date : Jan 26 2015

Contents

1	Front	2
2	OBI	3
2.1	OBI	3
2.1.1	Images	3
2.1.2	Bias	3
2.1.3	Parameters	4
2.1.4	Events	4
2.2	Compared Parameters	5
2.3	Aspect	6
2.4	Star Slots	9
2.4.1	Slot 3	9
2.4.2	Slot 4	10
2.4.3	Slot 5	11
2.4.4	Slot 6	12
2.4.5	Slot 7	13
2.5	FID Slots	14
2.5.1	Slot 0	14
2.5.2	Slot 1	15
2.5.3	Slot 2	16
A	Summary	17
A.1	Status	17
A.2	Comments	17

1 Front

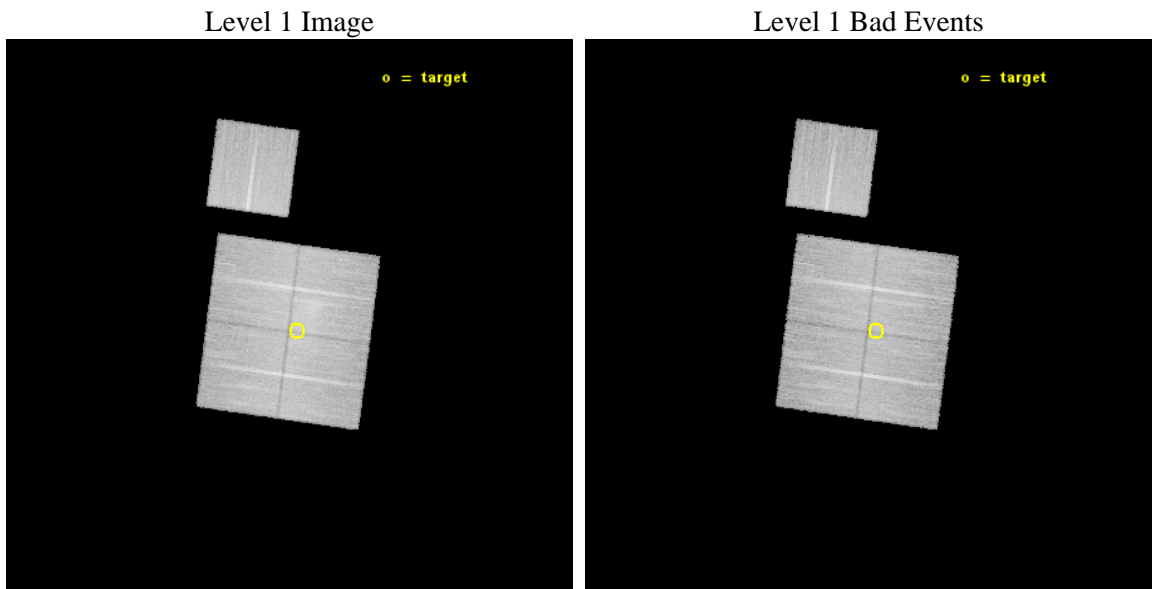
seq_num	801476	Sequence number
obs_id	17584	Observation id
title	Abell 3411: Confronting the Relic Shock Acceleration Mystery	Propo
observer	Dr Reinout van Weeren	Principal investigator
object	Abell 3411	Source name
dtcycle	0	
cycle	P	events from which exps? Prim/Second/Both
ra_targ	130.49375	Observer's specified target RA [deg]
dec_targ	-17.503472	Observer's specified target Dec [deg]
ra_nom	130.5091353796	Nominal RA [deg]
dec_nom	-17.491472476222	Nominal Dec [deg]
roll_nom	7.7133175179694	Nominal Roll [deg]
revision	1	Processing version of data
ontime	32568.600250602	Sum of GTIs [s]
livetime	32143.067511673	Livetime [s]
ontime0	32568.600250602	Sum of GTIs [s]
ontime1	32568.600250602	Sum of GTIs [s]
ontime2	32562.318140388	Sum of GTIs [s]
ontime3	32568.600250602	Sum of GTIs [s]
ontime6	32565.459230423	Sum of GTIs [s]
l2events	107806	Number of level 2 events



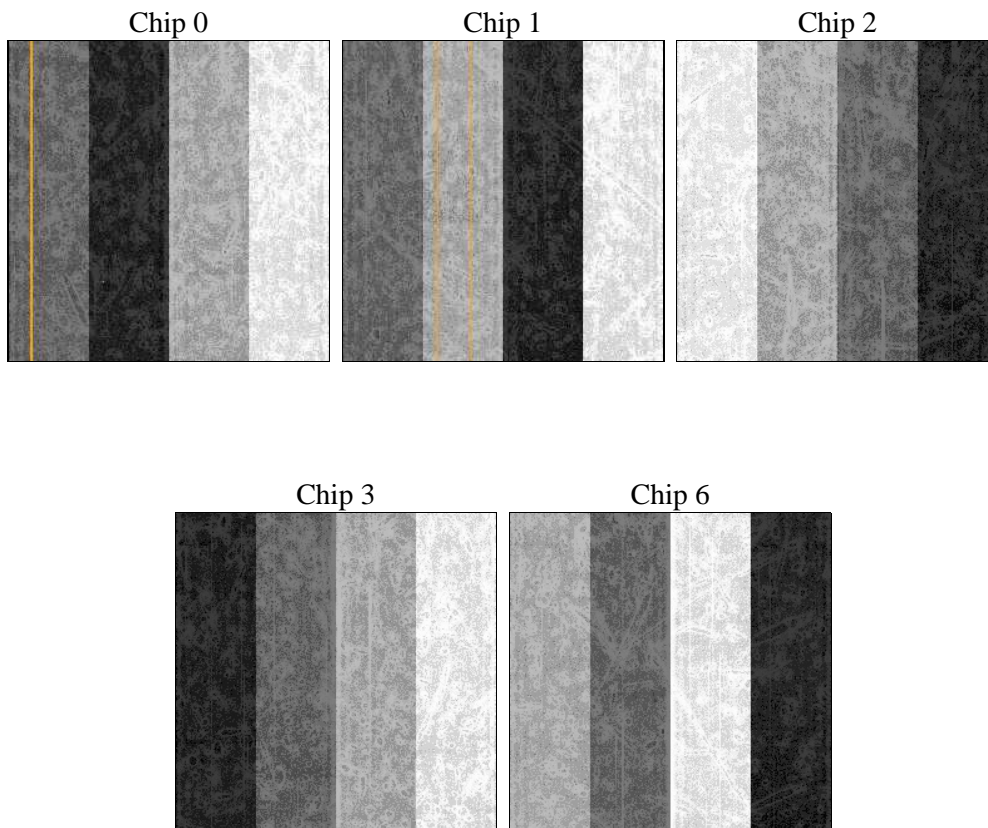
2 OBI

2.1 OBI

2.1.1 Images



2.1.2 Bias



2.1.3 Parameters

obi_num	0	Obi number	sched_exp_time	32488.000000	[s] Scheduled observation exposure time
ascdsver	10.3.3	Processing system revision	ontime	32568.600250602	Sum of GTIs [s]
caldbver	4.6.6	 	ontime0	32568.600250602	Sum of GTIs [s]
date	2015-01-26T15:39:20	Date and time of file creation	ontime1	32568.600250602	Sum of GTIs [s]
revision	1	Processing version of data	ontime2	32562.318140388	Sum of GTIs [s]
			ontime3	32568.600250602	Sum of GTIs [s]
			ontime6	32565.459230423	Sum of GTIs [s]
			l1events	800916	Number of level 1 events

2.1.4 Events

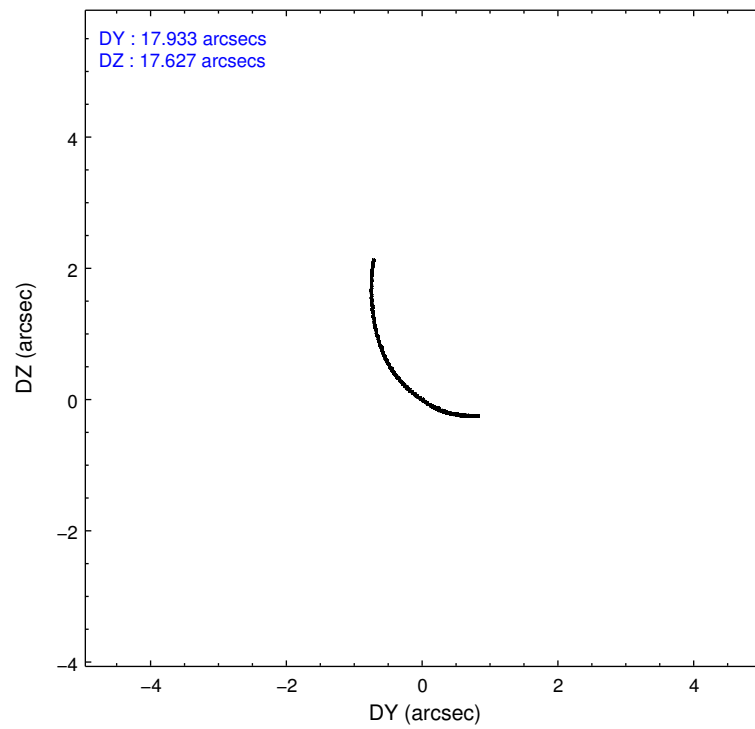
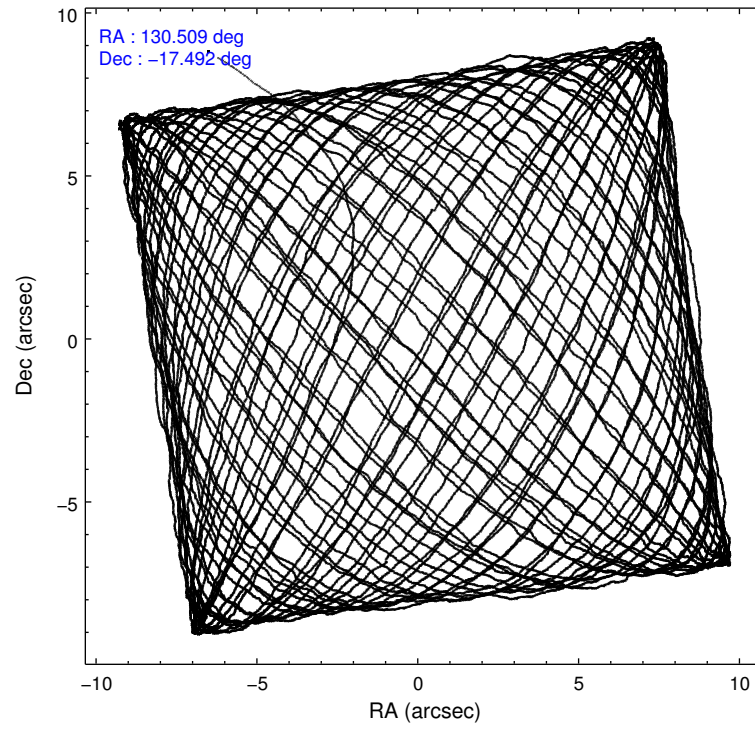
	ccd 0	ccd 1	ccd 2	ccd 3	ccd 6
level 1 events	150409	156315	161734	171939	160519
rejected events	127366	128981	139756	139852	141265
rejected %	84%	82%	86%	81%	88%

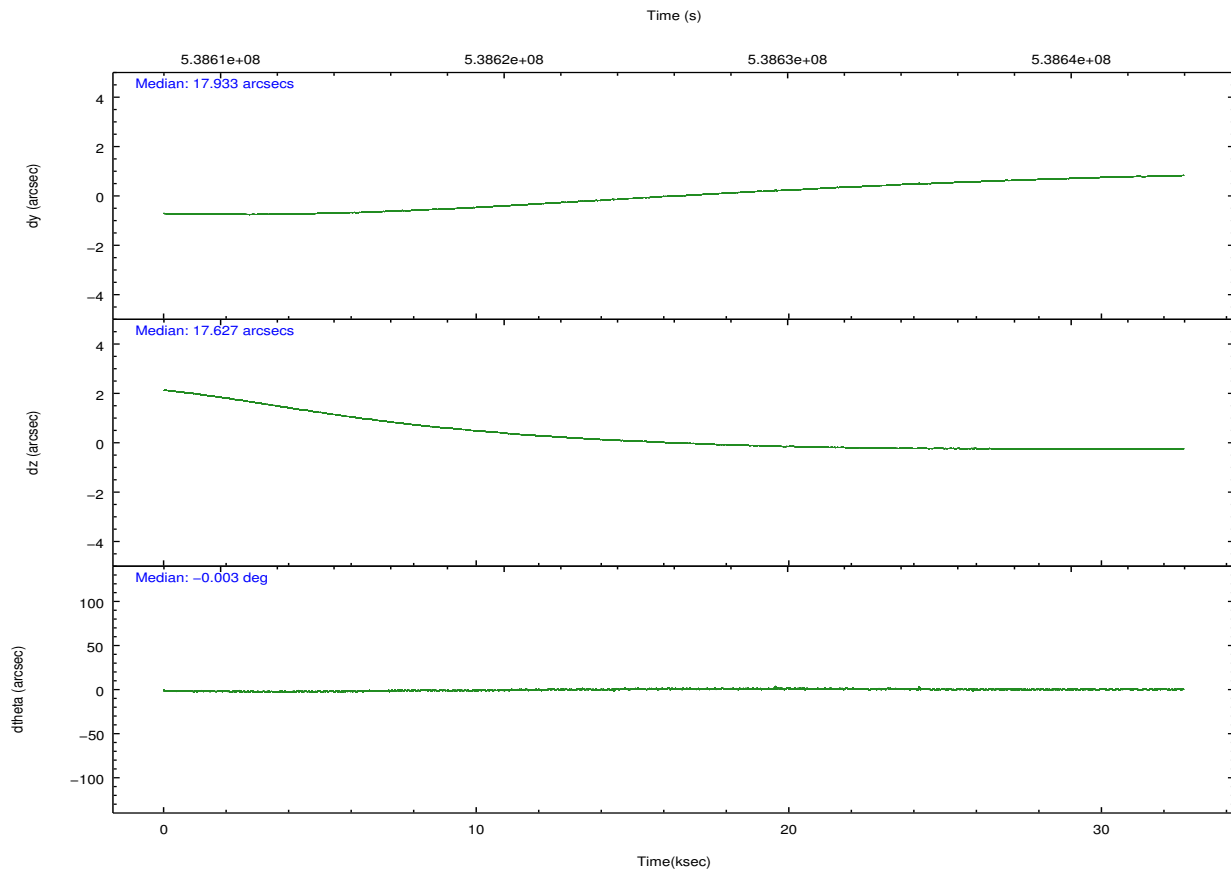
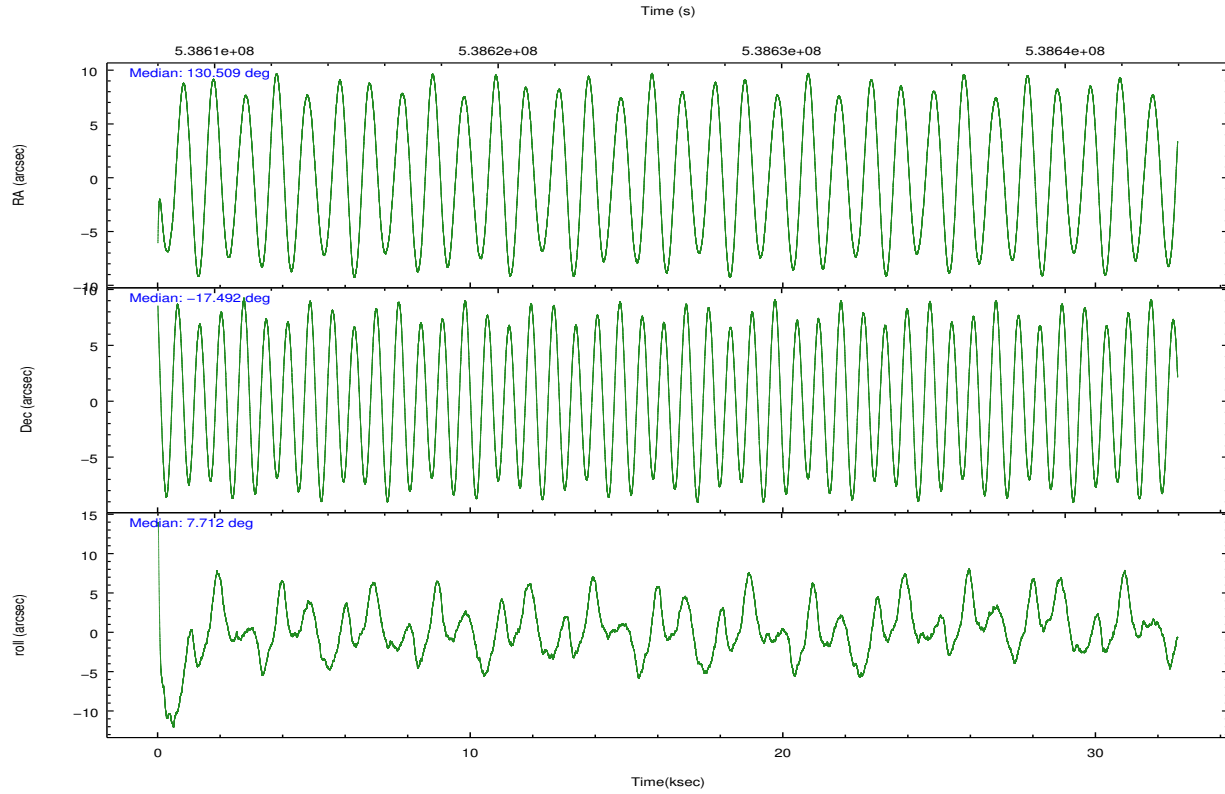
	ccd 0	ccd 1	ccd 2	ccd 3	ccd 6
grade 0 events	9792	12297	9485	17816	6407
	6%	7%	5%	10%	3%
grade 1 events	90	101	114	125	83
	0%	0%	0%	0%	0%
grade 2 events	5146	5735	4956	5386	4321
	3%	3%	3%	3%	2%
grade 3 events	2058	2224	1936	2296	2026
	1%	1%	1%	1%	1%
grade 4 events	2012	2256	1977	2336	1985
	1%	1%	1%	1%	1%
grade 5 events	7565	8103	7197	8522	8072
	5%	5%	4%	4%	5%
grade 6 events	4039	4830	3628	4258	4516
	2%	3%	2%	2%	2%
grade 7 events	119707	120769	132441	131200	133109
	79%	77%	81%	76%	82%

2.2 Compared Parameters

Parameter	Planned	Actual	Parameter	Planned	Actual
Instrument	ACIS	ACIS	Obspar format version number	7	7
Detector	ACIS-01236	ACIS-01236	Obspar file type	PREDICTED	ACTUAL
Grating	NONE	NONE	Obspar update status	NONE	UPDATED
Data mode	VFAINT	VFAINT	CCD I0 on	Y	Y
Observation mode	POINTING	POINTING	CCD I1 on	Y	Y
[deg] Pointing RA	130.486328	130.509135379603	CCD I2 on	Y	Y
[deg] Pointing Dec	-17.508445	-17.49147247622225	CCD I3 on	Y	Y
[deg] Pointing Roll	7.497764	7.713317517969417	CCD S0 on	N	N
[mm] SIM focus pos	-0.782348	-0.7809083437167272	CCD S1 on	N	N
[mm] SIM defocus	0	0.001439871863259334	CCD S2 on	O2	Y
[mm] SIM translation stage pos	-233.592463	-233.5874344608287	CCD S3 on	O1	N
[mm] SIM translation stage offset	0	-0.005018542100998502	CCD S4 on	N	N
[s] Observation start time (MET)	538609806.184000	538608578.83453	CCD S5 on	N	N
Observation start date	2015-01-25T21:48:59	2015-01-25T21:29:38	Number of optional ACIS chips dropped	1	1
[s] Observation end time (MET)	538642294.184000	538643001.41146	On-chip summing requested	N	N
Observation end date	2015-01-26T06:50:27	2015-01-26T07:03:21	Subarray requested	NONE	NONE
Read mode	TIMED	TIMED	Alternating exposures requested	N	N
			[s] Primary exposure time	0.000000	3.1

2.3 Aspect



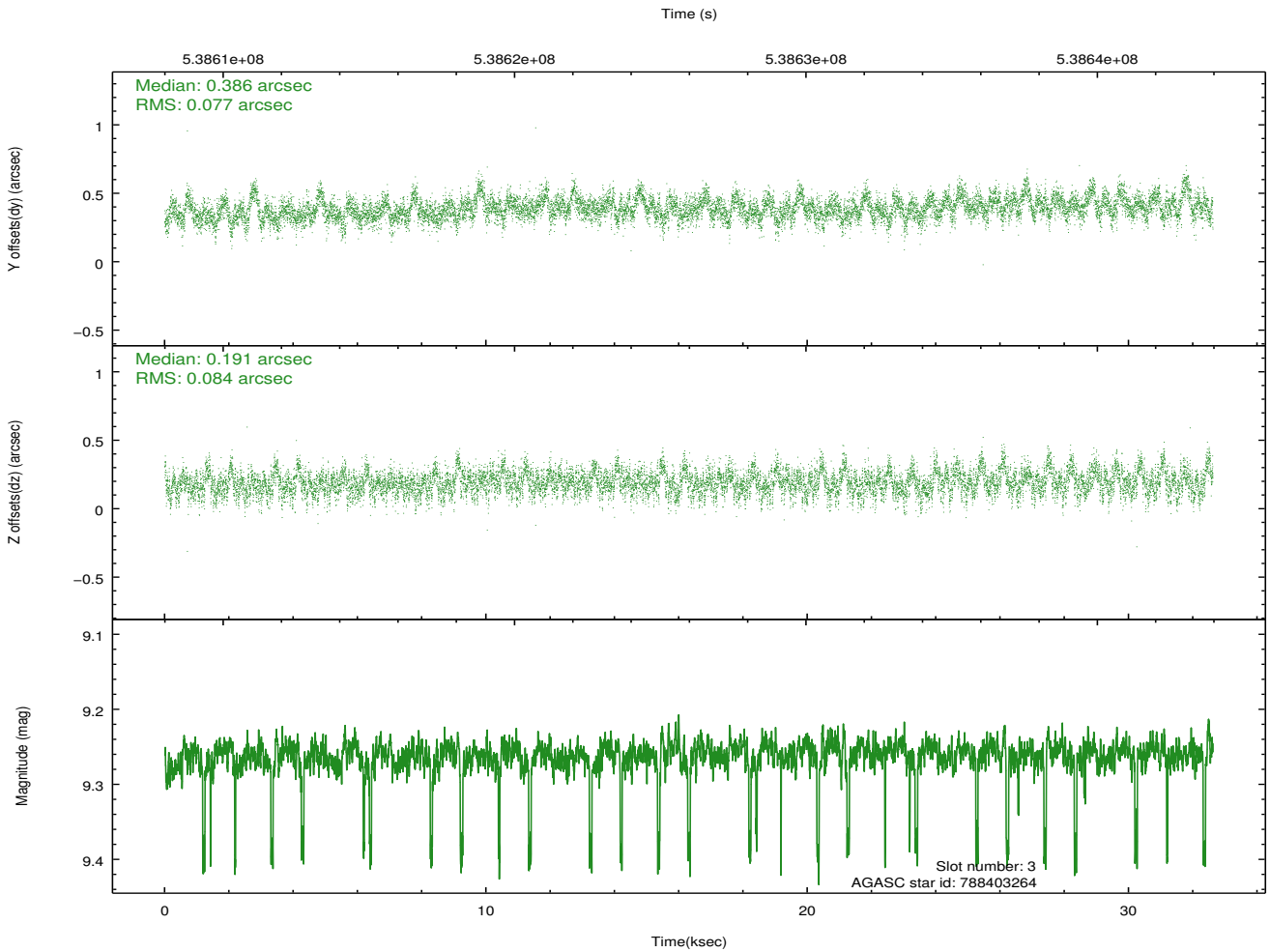
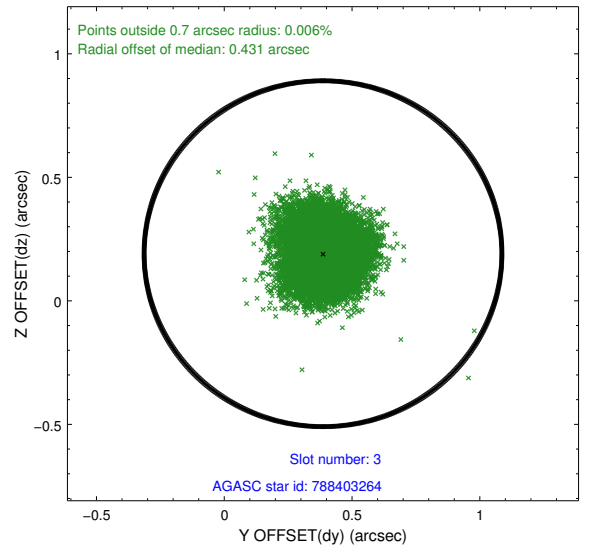
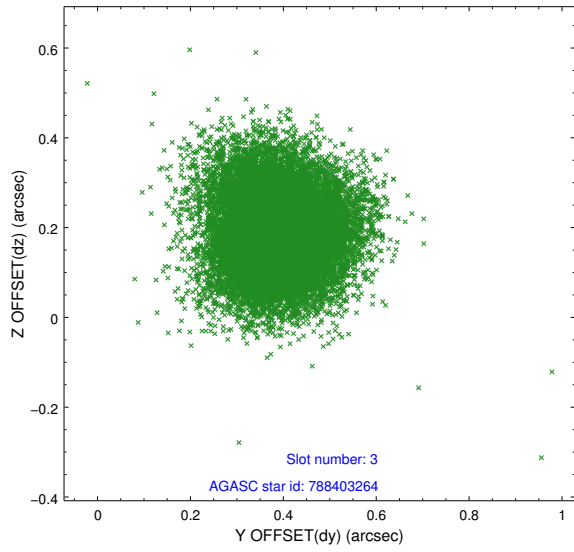


Slot Statistics

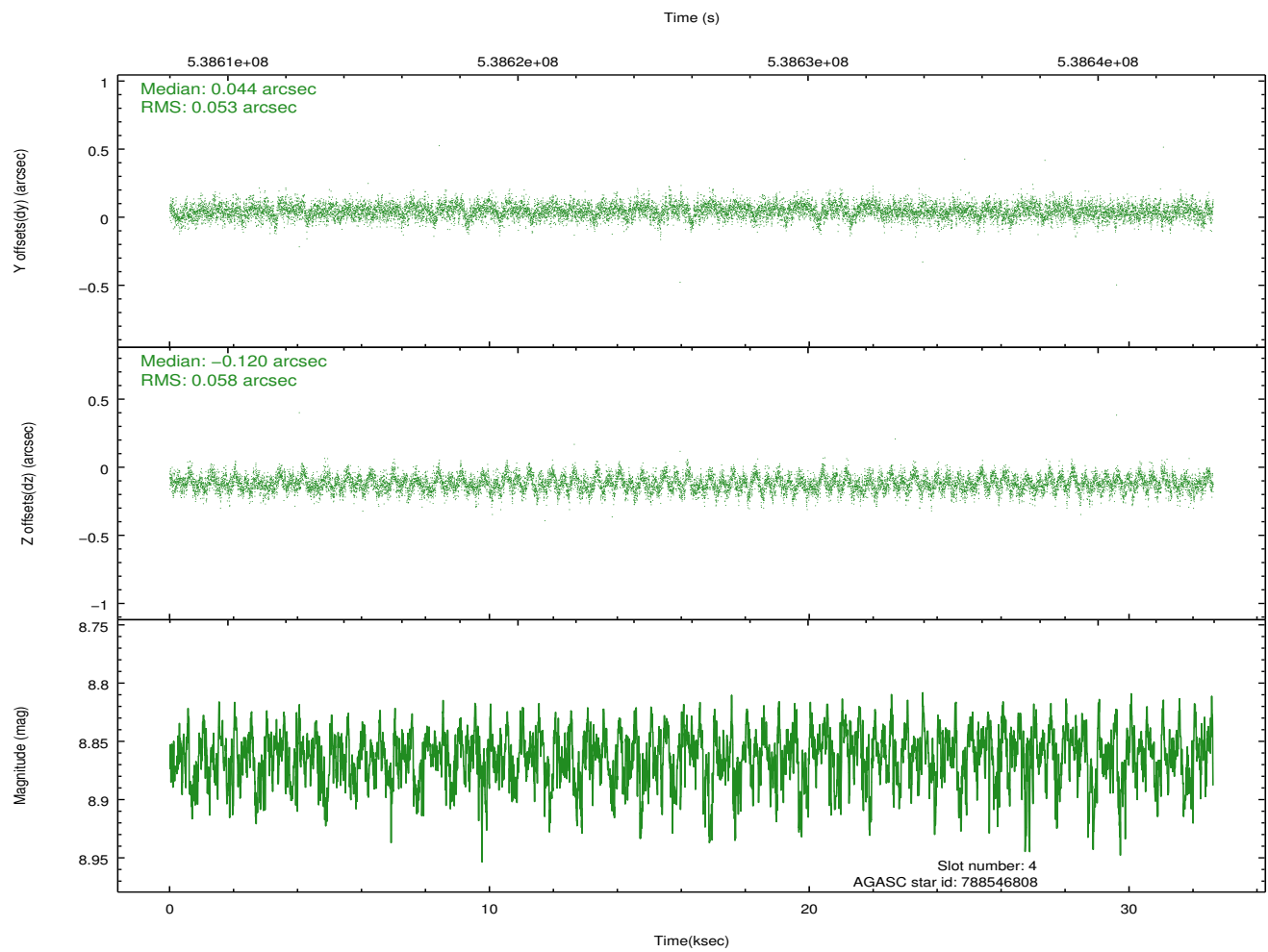
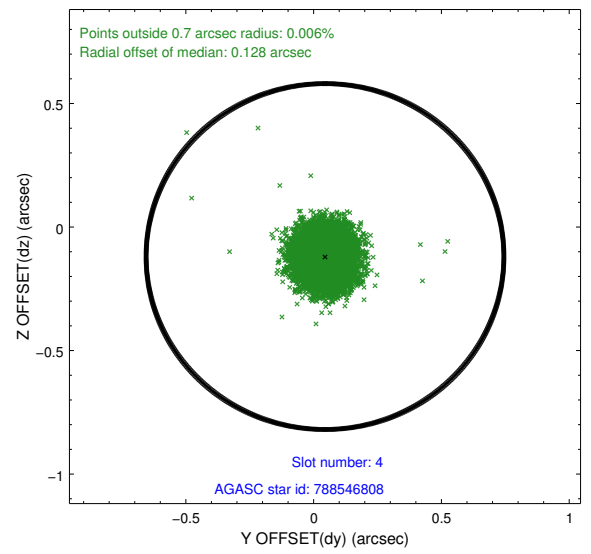
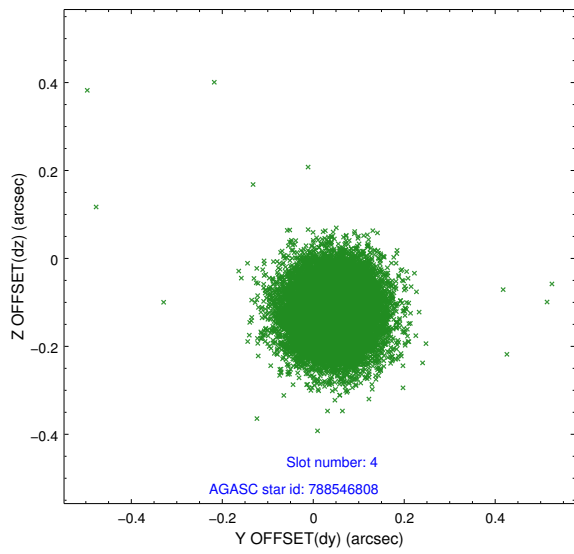
slot	status	used	id	mag	n_pts	med_dy	med_dz	dr1	dr2	ra	dec	mean_y	mean_z
0	FID		ACIS-I-1	7.11	7955	0.064	0.005	0.026	0.040	0.000000	0.000000	921.54	-841.61
1	FID		ACIS-I-5	7.10	7957	-0.296	0.050	0.016	0.028	0.000000	0.000000	-1826.93	1055.84
2	FID		ACIS-I-6	7.12	7957	0.142	0.014	0.015	0.024	0.000000	0.000000	387.05	1700.41
3	GUIDE	used	788403264	9.26	15900	0.386	0.191	0.121	0.197	129.988745	-17.706292	-1784.47	-485.27
4	GUIDE	used	788546808	8.86	15899	0.044	-0.120	0.083	0.134	131.022424	-17.370468	1890.96	249.50
5	GUIDE	used	788548808	8.67	15903	-0.217	0.012	0.101	0.165	130.875619	-17.230270	1457.87	816.96
6	GUIDE	used	788552496	8.77	15903	-0.097	-0.010	0.079	0.130	131.035975	-16.946195	2140.95	1757.39
7	GUIDE	used	788552320	8.47	15909	-0.118	-0.068	0.085	0.138	130.958057	-17.020554	1839.77	1525.54

2.4 Star Slots

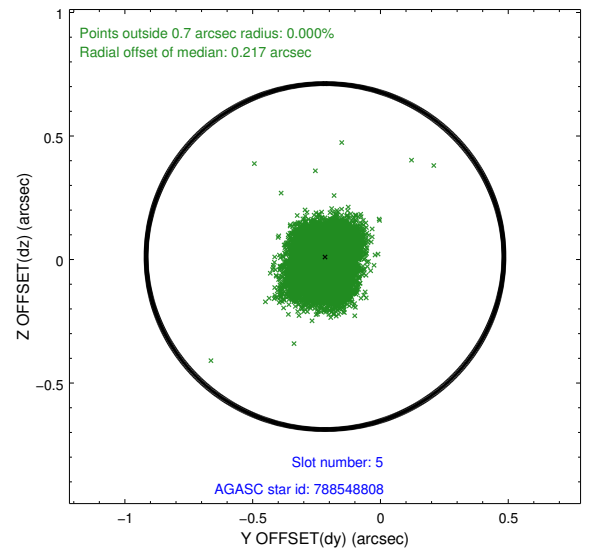
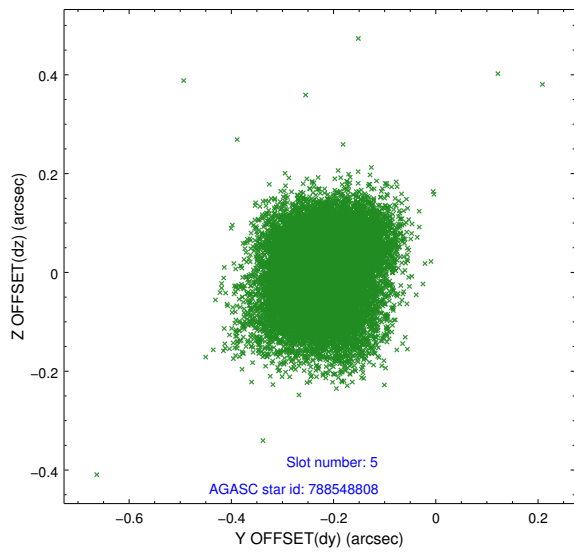
2.4.1 Slot 3



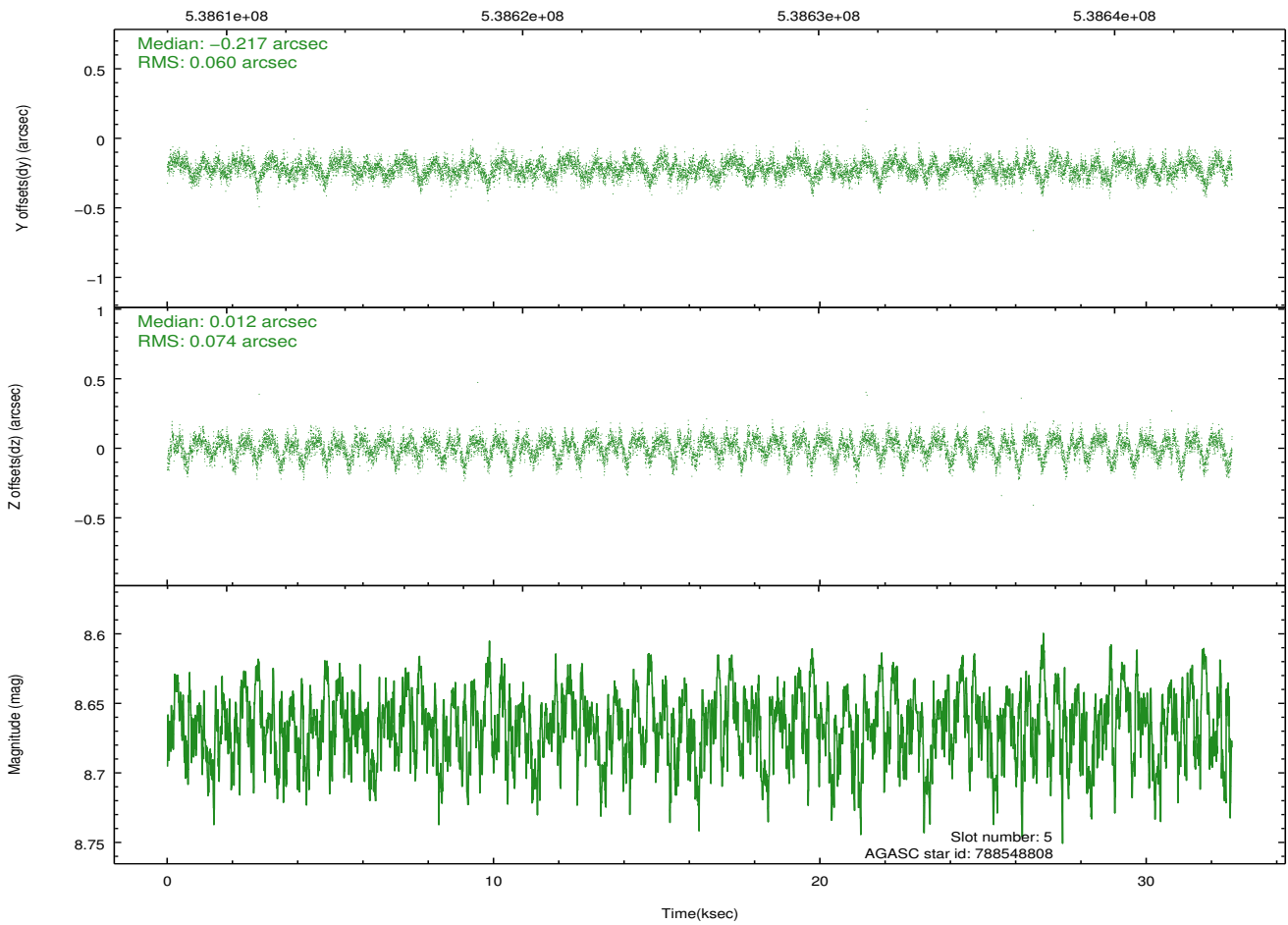
2.4.2 Slot 4



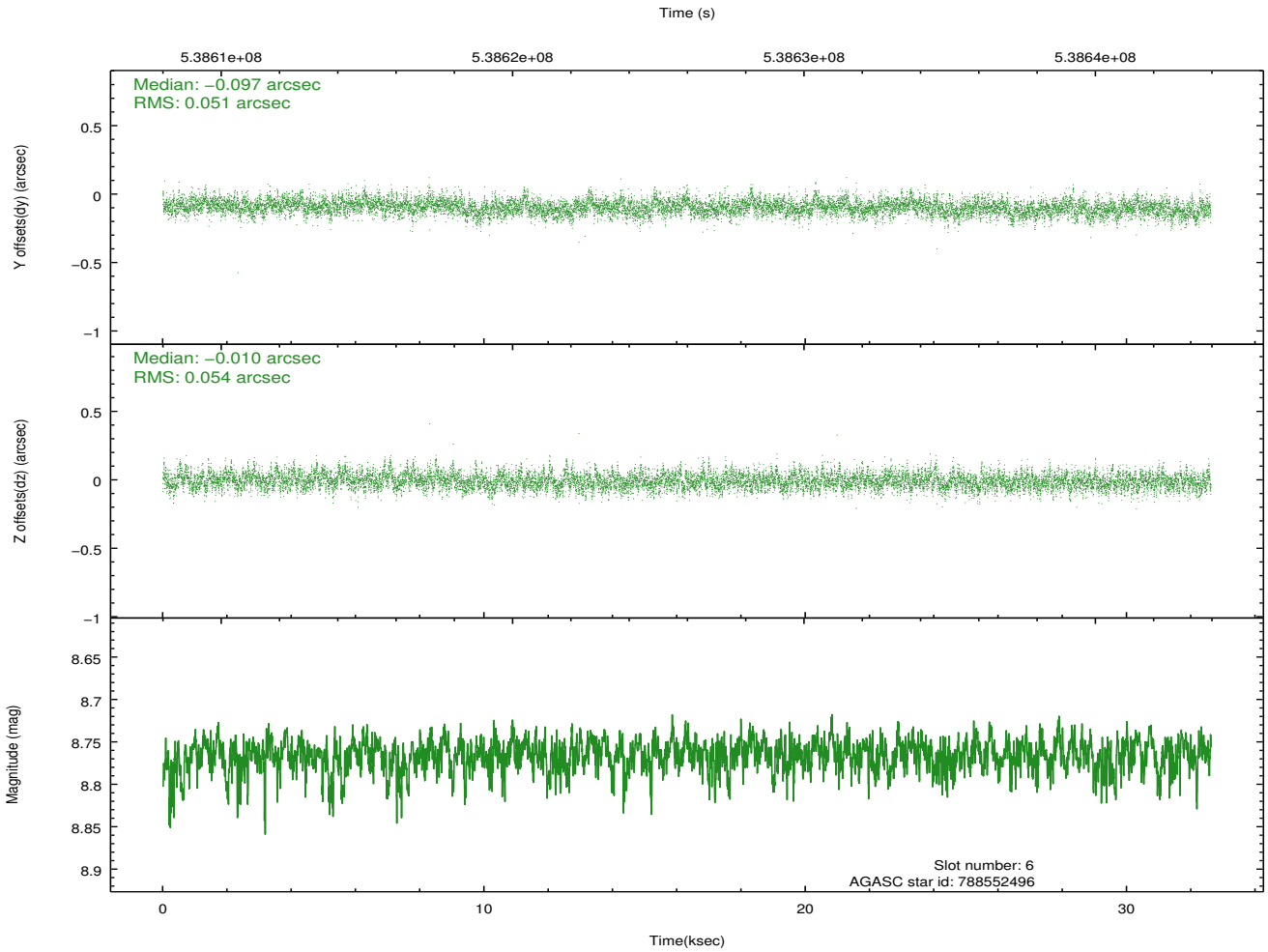
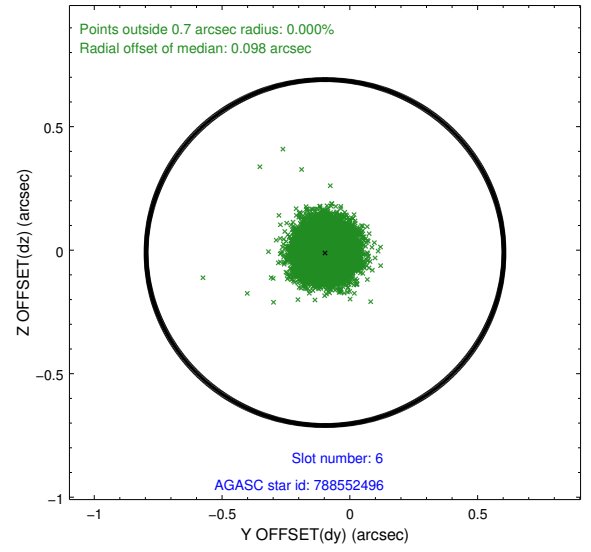
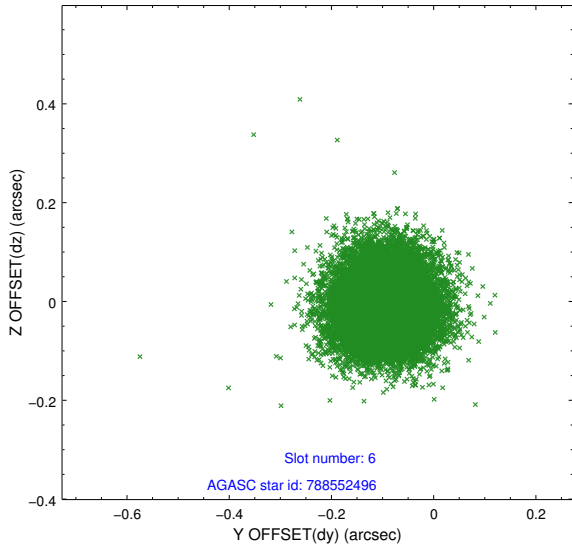
2.4.3 Slot 5



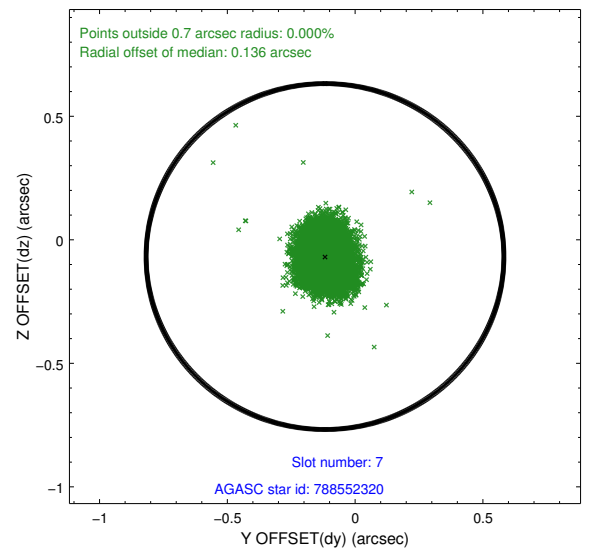
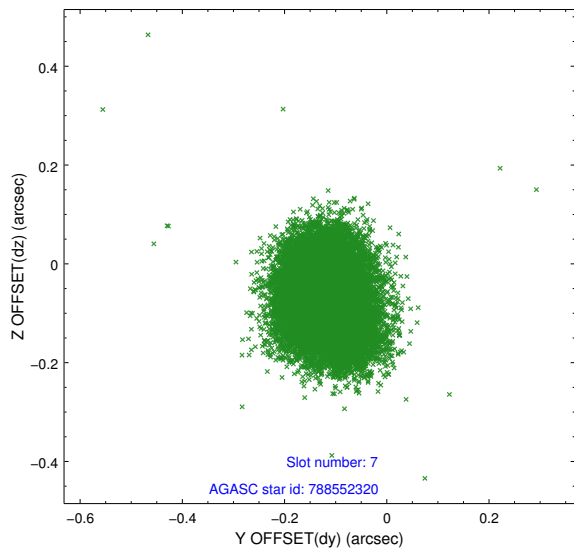
Time (s)



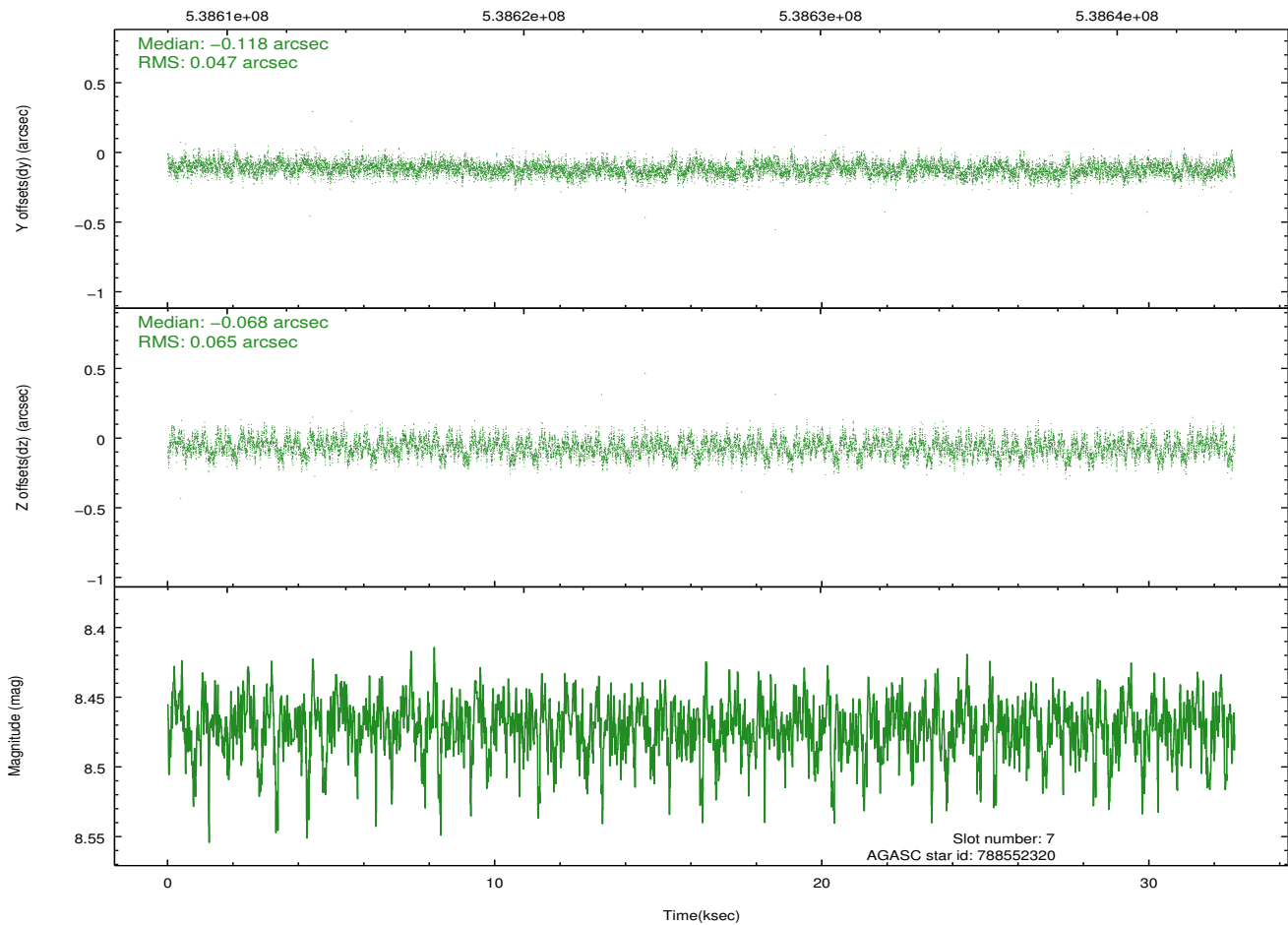
2.4.4 Slot 6



2.4.5 Slot 7

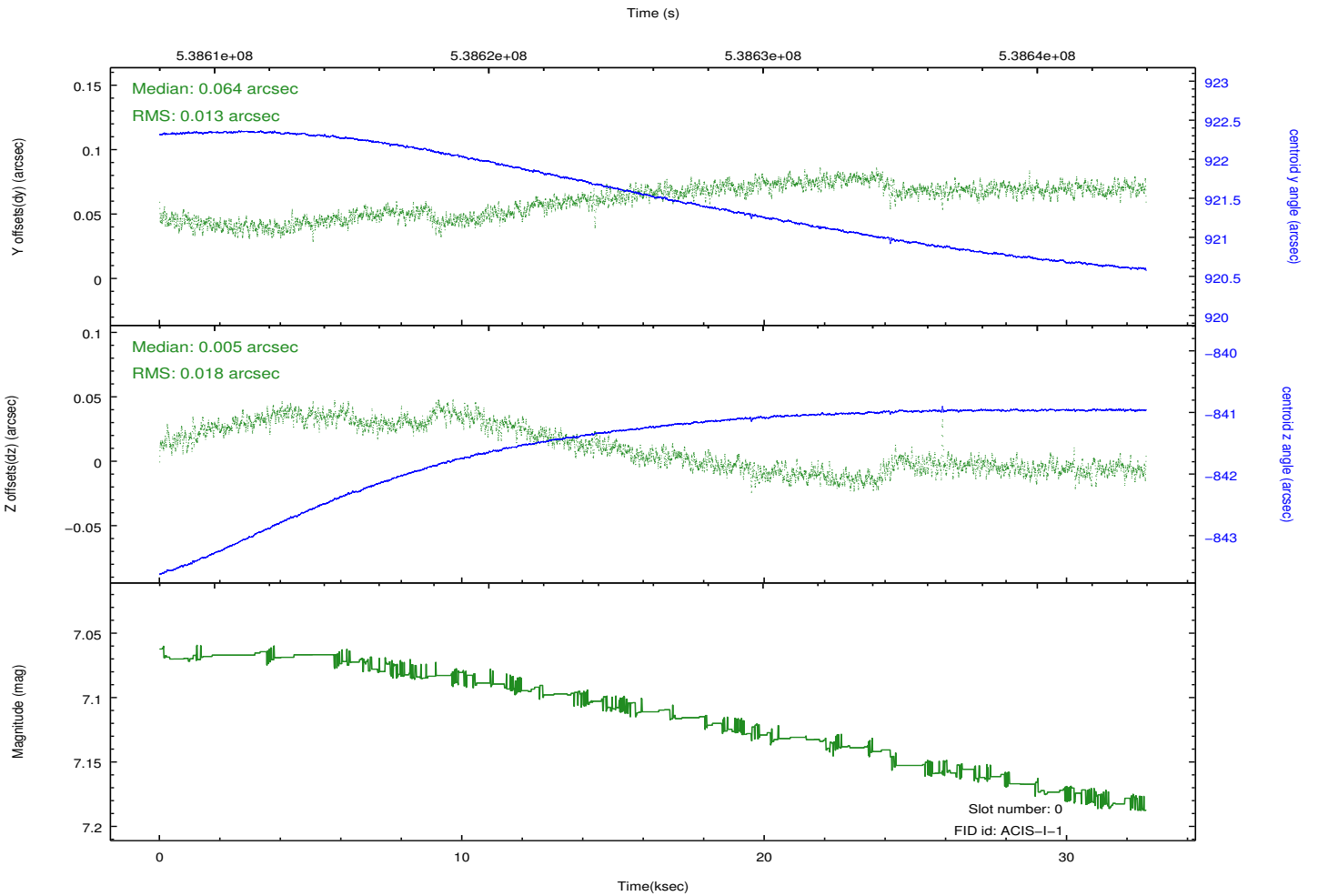
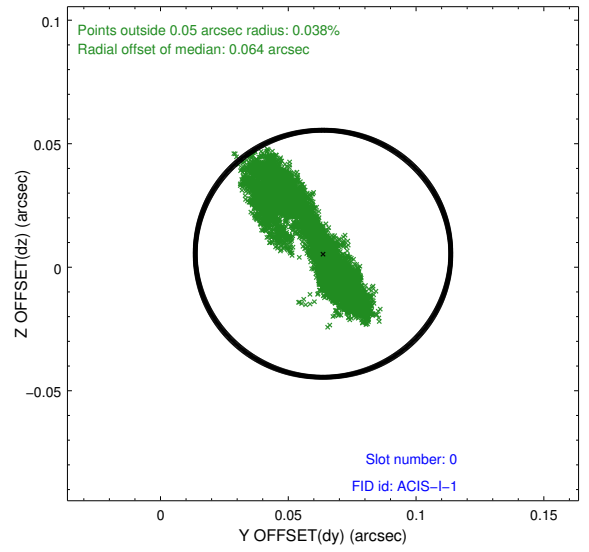
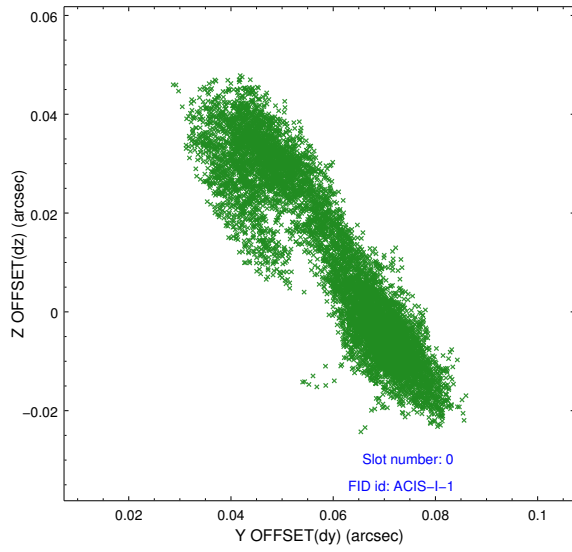


Time (s)

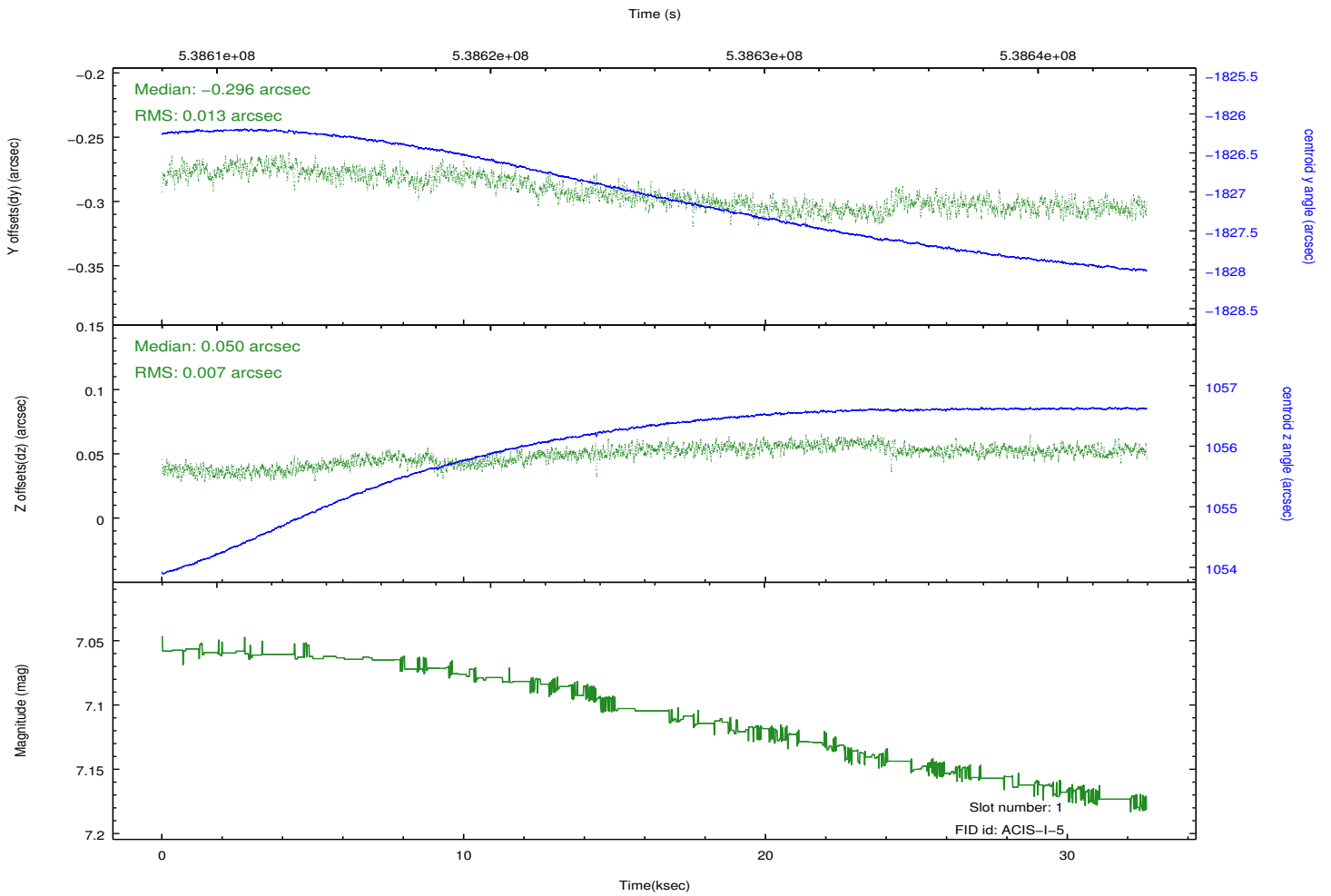
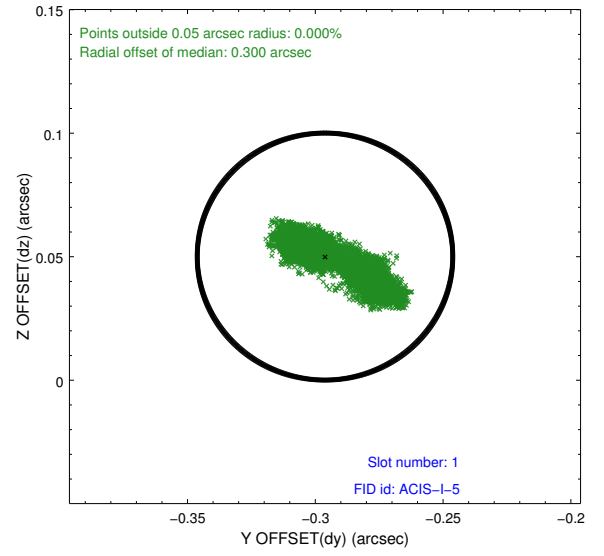
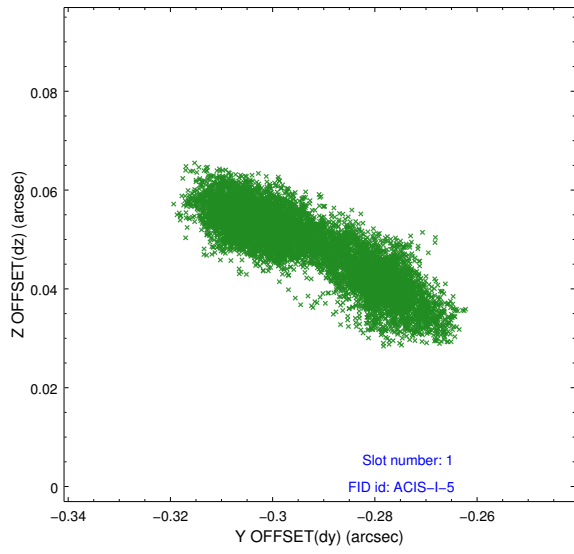


2.5 FID Slots

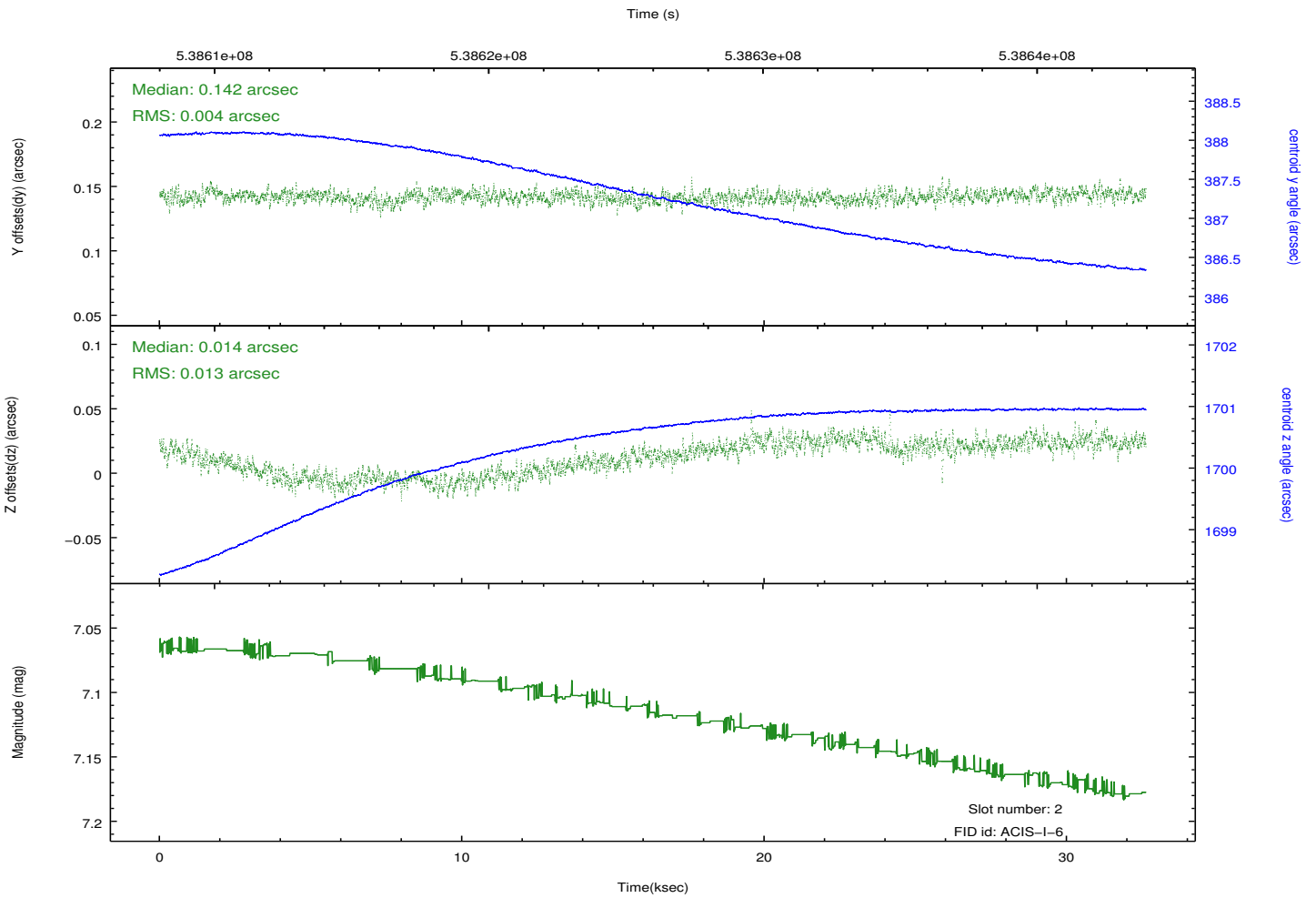
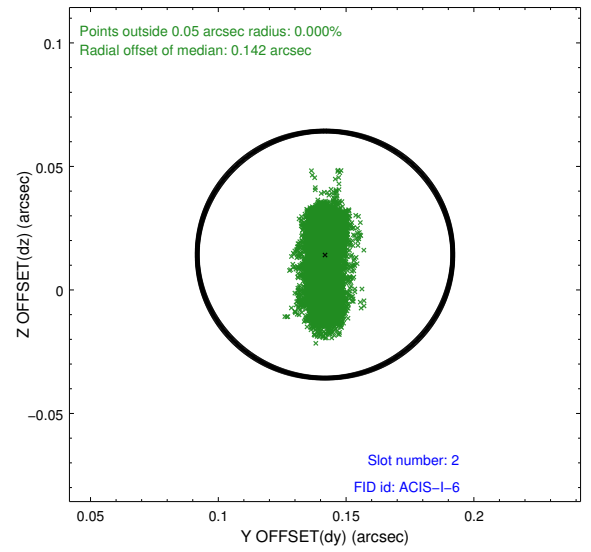
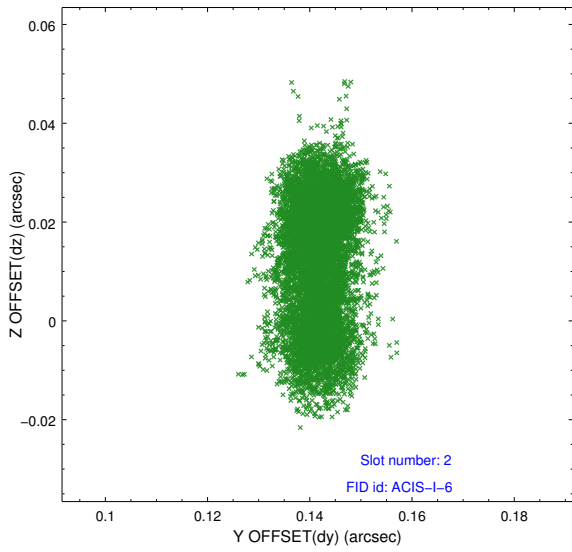
2.5.1 Slot 0



2.5.2 Slot 1



2.5.3 Slot 2



A Summary

A.1 Status

V&V Scientist	Jen Lauer
V&V Date (YYYY-MM-DD)	2015.01.26
V&V Edition	1
V&V Disposition and Status	OK
V&V Charge Time	32.568600250602

A.2 Comments

Joint Proposal: NRAO