

V&V Reference Report

L2 ASCDS Version : 8.4.5

Observation 1954 - L2 Version 3
Chandra X-Ray Center

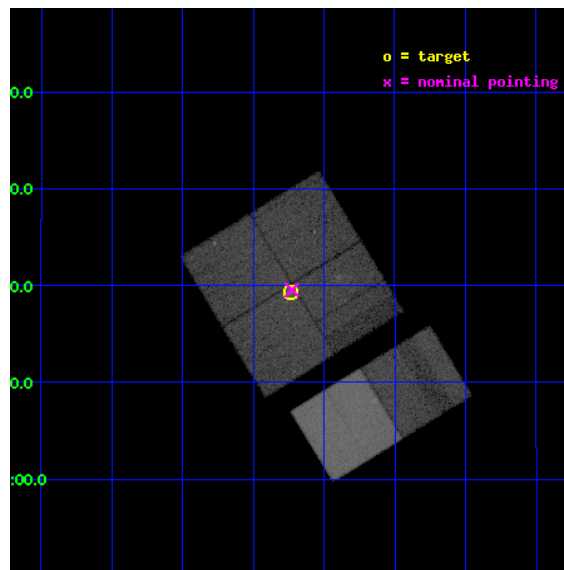
L2 Processing Date : Sep 17 2012

Contents

1	Front	2
2	OBI	3
2.1	OBI	3
2.1.1	Images	3
2.1.2	Bias	3
2.1.3	Parameters	4
2.1.4	Events	4
2.2	Compared Parameters	5
2.3	Aspect	6
2.4	Star Slots	9
2.4.1	Slot 3	9
2.4.2	Slot 4	10
2.4.3	Slot 5	11
2.4.4	Slot 6	12
2.4.5	Slot 7	13
2.5	FID Slots	14
2.5.1	Slot 0	14
2.5.2	Slot 1	15
2.5.3	Slot 2	16
A	Summary	17
A.1	Status	17
A.2	Comments	17

1 Front

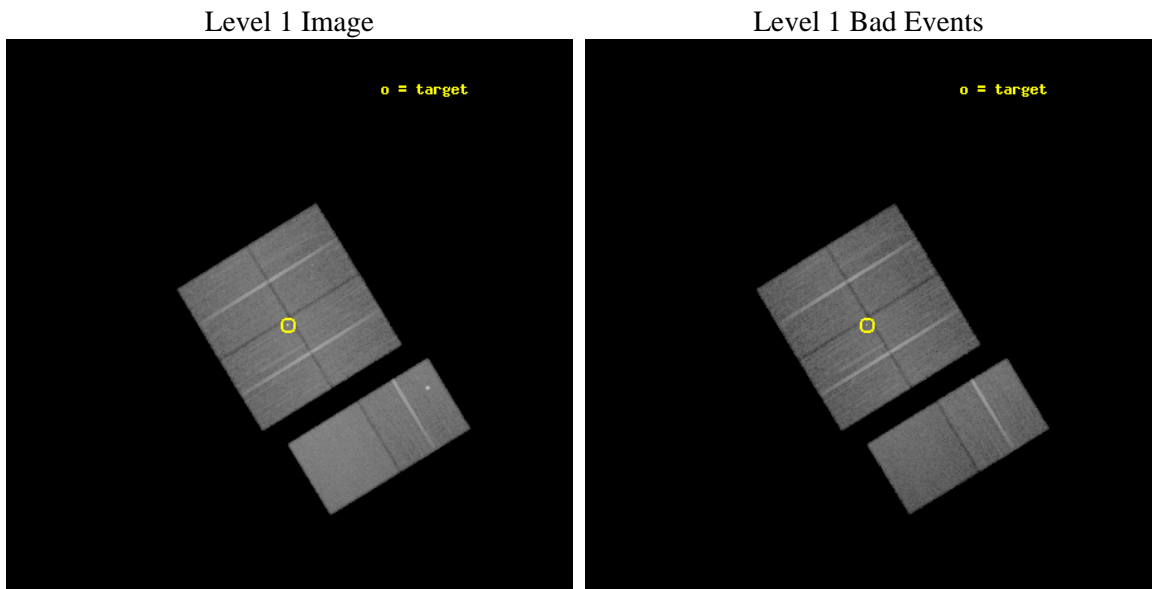
seq_num	500131	Sequence number
obs_id	1954	Observation id
title	THE PROPER MOTION OF THE SOFT GAMMA REPEATER SGR1900+14	Proposal t
observer	Dr Kevin Hurley	Principal investigator
object	SGR1900+14	Source name
dtcycle	0	
cycle	P	events from which exps? Prim/Second/Both
ra_targ	286.809583	Observer's specified target RA [deg]
dec_targ	9.32225	Observer's specified target Dec [deg]
ra_nom	286.80677968052	Nominal RA [deg]
dec_nom	9.3261147970653	Nominal Dec [deg]
roll_nom	148.56315771344	Nominal Roll [deg]
revision	3	Processing version of data
ontime	30144.000028059	Sum of GTIs [s]
livetime	29762.298549166	Livetime [s]
ontime0	30140.759047821	Sum of GTIs [s]
ontime1	30144.000028059	Sum of GTIs [s]
ontime2	30140.759057805	Sum of GTIs [s]
ontime3	30144.000028059	Sum of GTIs [s]
ontime6	30144.000028059	Sum of GTIs [s]
ontime7	30144.000028059	Sum of GTIs [s]
l2events	265725	Number of level 2 events



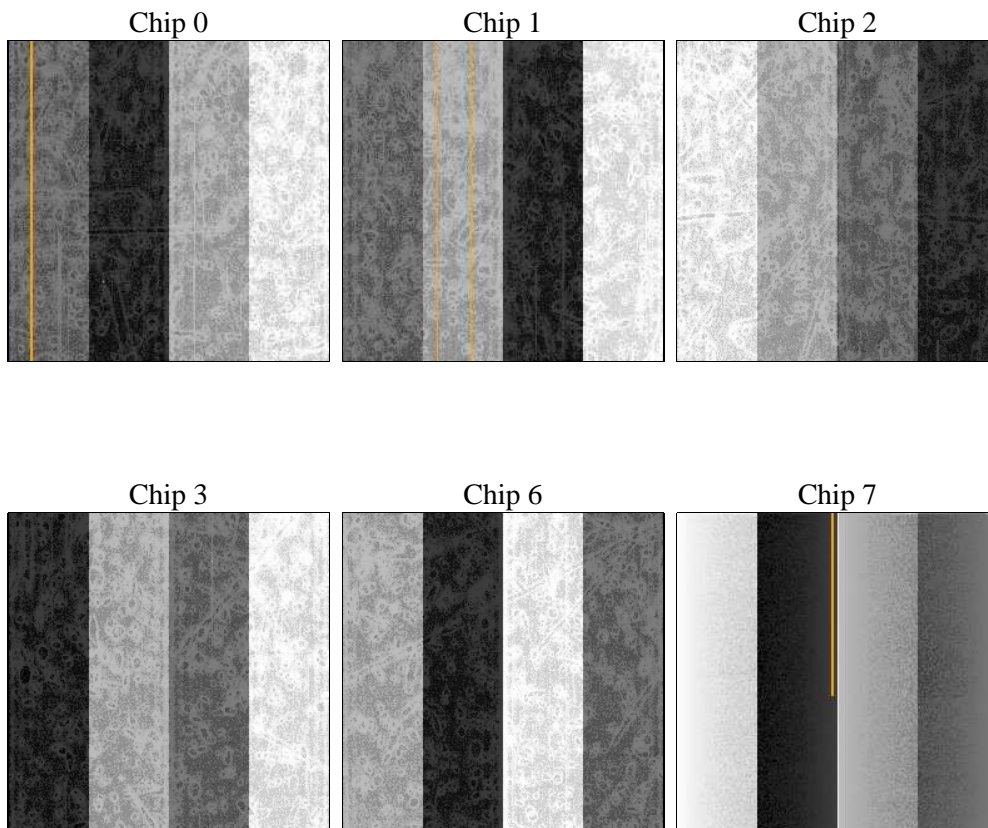
2 OBI

2.1 OBI

2.1.1 Images



2.1.2 Bias



2.1.3 Parameters

obi_num	0	Obi number	sched_exp_time	30000.000000	[s] Scheduled observation exposure time
ascdsver	8.4.5	Processing system revision	ontime	30144.000028059	Sum of GTIs [s]
caldbver	4.5.1.1	 	ontime0	30140.759047821	Sum of GTIs [s]
date	2012-09-17T22:29:37	Date and time of file creation	ontime1	30144.000028059	Sum of GTIs [s]
revision	3	Processing version of data	ontime2	30140.759057805	Sum of GTIs [s]
			ontime3	30144.000028059	Sum of GTIs [s]
			ontime6	30144.000028059	Sum of GTIs [s]
			ontime7	30144.000028059	Sum of GTIs [s]
			l1events	1356394	Number of level 1 events

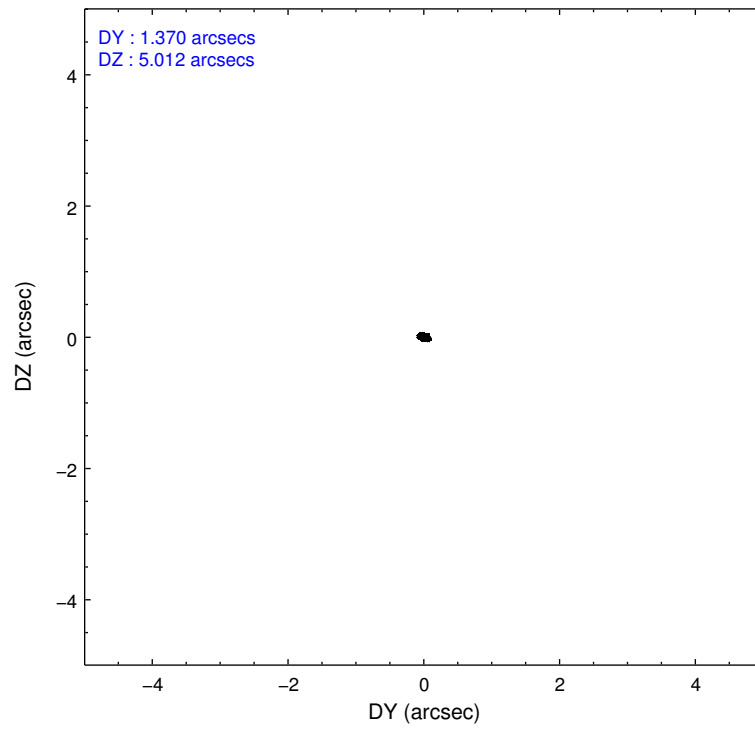
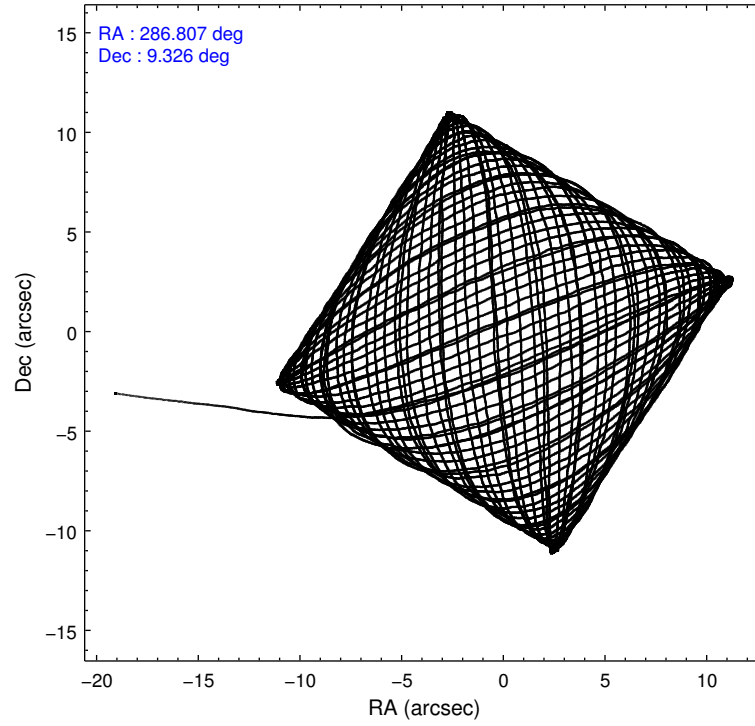
2.1.4 Events

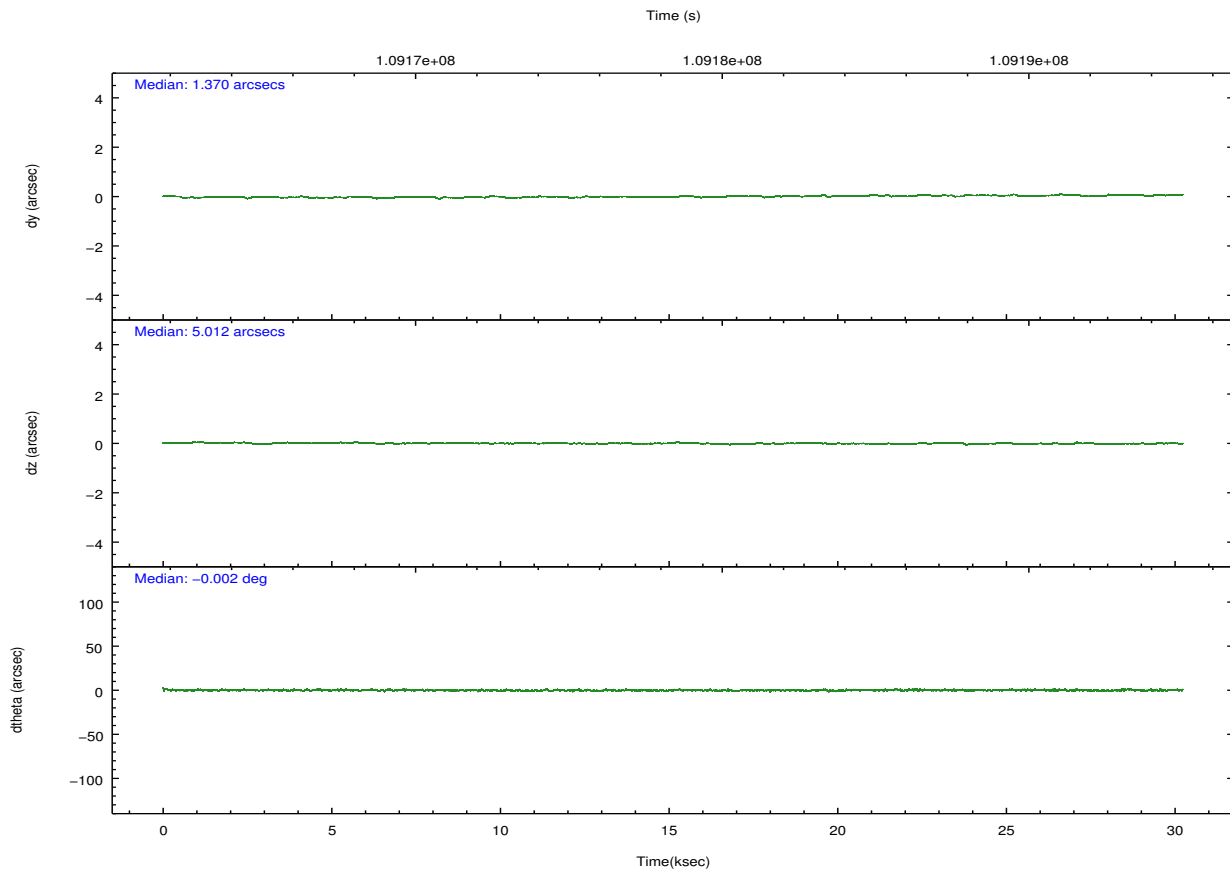
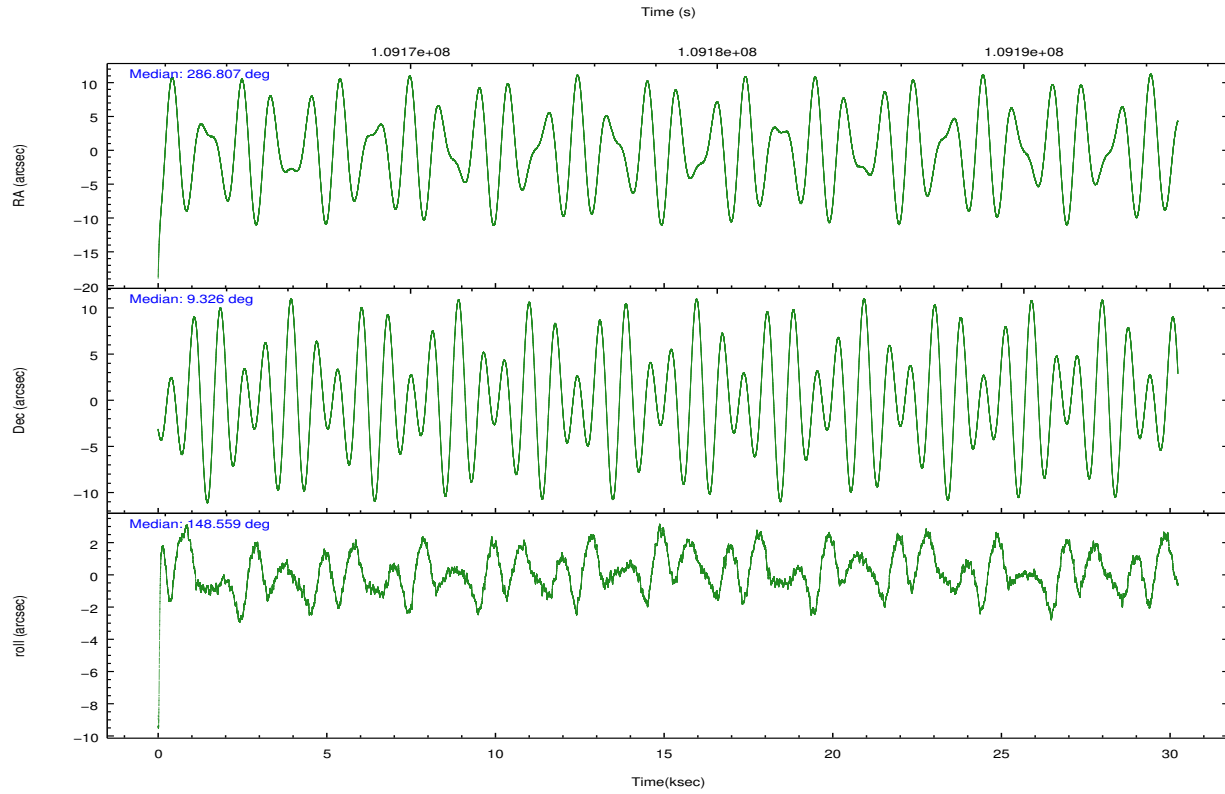
	ccd 0	ccd 1	ccd 2	ccd 3	ccd 6	ccd 7		ccd 0	ccd 1	ccd 2	ccd 3	ccd 6	ccd 7
level 1 events	199905	206499	217280	229369	234040	269301	grade 0 events	15255	14791	14174	19057	19254	10860
rejected events	166434	171810	185861	189703	196062	151424		7%	7%	6%	8%	8%	4%
rejected %	83%	83%	85%	82%	83%	56%	grade 1 events	109	105	120	589	167	264
								0%	0%	0%	0%	0%	0%
							grade 2 events	7989	8662	7410	9041	8205	22911
								3%	4%	3%	3%	3%	8%
							grade 3 events	2549	2778	2315	2764	2529	10624
								1%	1%	1%	1%	1%	3%
							grade 4 events	2483	2581	2443	2960	2477	10677
								1%	1%	1%	1%	1%	3%
							grade 5 events	7181	7933	6803	8140	8616	24199
								3%	3%	3%	3%	3%	8%
							grade 6 events	5505	6175	5431	6199	5865	63849
								2%	2%	2%	2%	2%	23%
							grade 7 events	158834	163474	178584	180619	186927	125917
								79%	79%	82%	78%	79%	46%

2.2 Compared Parameters

Parameter	Planned	Actual	Parameter	Planned	Actual
Instrument	ACIS	ACIS	Obspar format version number	7	7
Detector	ACIS-012367	ACIS-012367	Obspar file type	PREDICTED	ACTUAL
Grating	NONE	NONE	Obspar update status	NONE	UPDATED
Data mode	FAINT	FAINT	Number of optional ACIS chips dropped	0	0
Observation mode	POINTING	POINTING	On-chip summing requested	N	N
[deg] Pointing RA	286.834595	286.806779680524	Subarray requested	NONE	NONE
[deg] Pointing Dec	9.325439	9.326114797065282	Alternating exposures requested	N	N
[deg] Pointing Roll	148.349965	148.5631577134373	[s] Primary exposure time	0.000000	3.2
[mm] SIM focus pos	-0.782348	-0.7809083437167272			
[mm] SIM defocus	0	0.001439871863259334			
[mm] SIM translation stage pos	-233.592463	-233.5874344608287			
[mm] SIM translation stage offset	0	-0.005018542100998502			
[s] Observation start time (MET)	109163428.184000	109162244.511			
Observation start date	2001-06-17T11:09:24	2001-06-17T10:50:44			
[s] Observation end time (MET)	109193428.184000	109193827.83723			
Observation end date	2001-06-17T19:29:24	2001-06-17T19:37:07			
Read mode	TIMED	TIMED			

2.3 Aspect



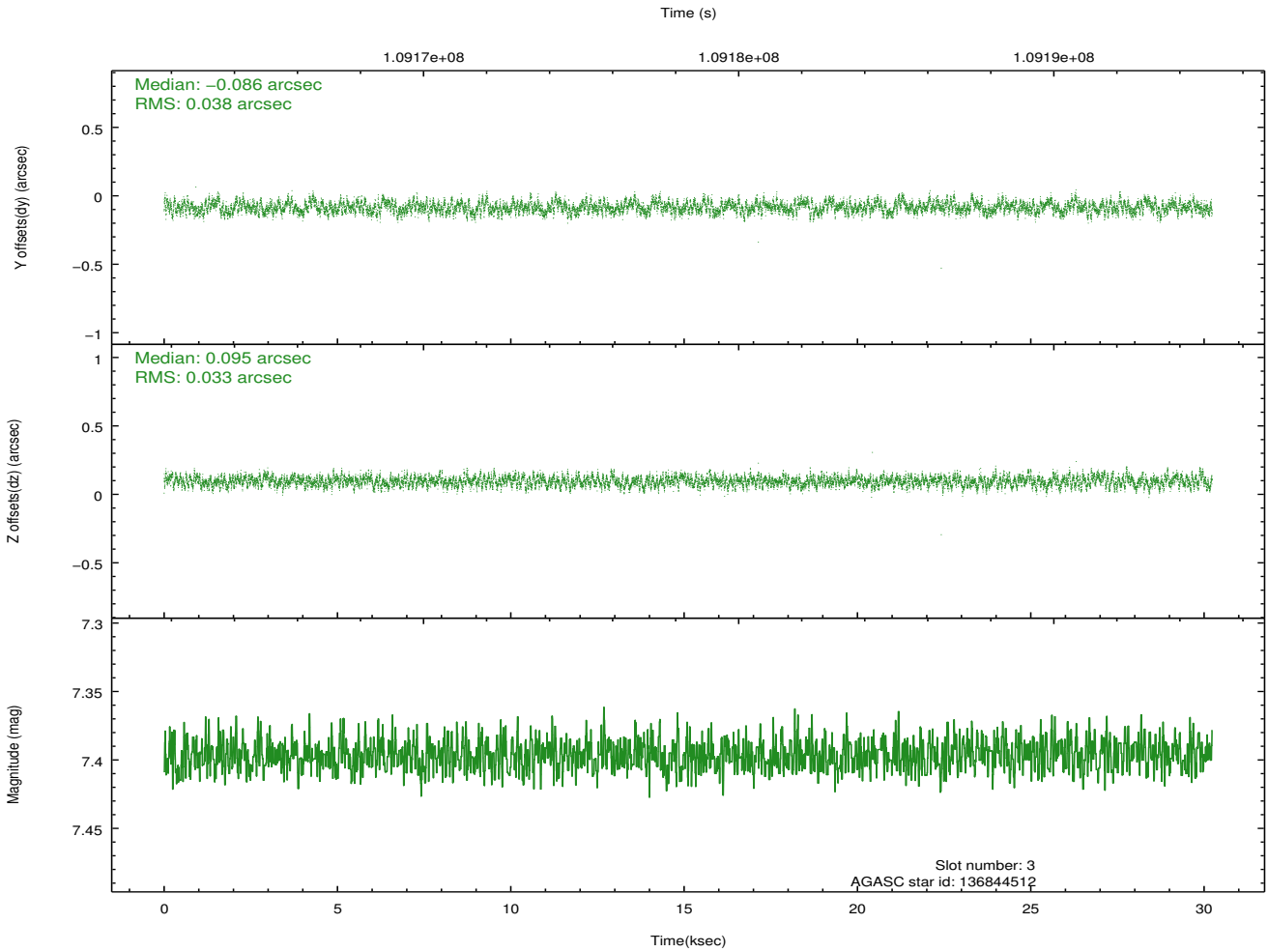
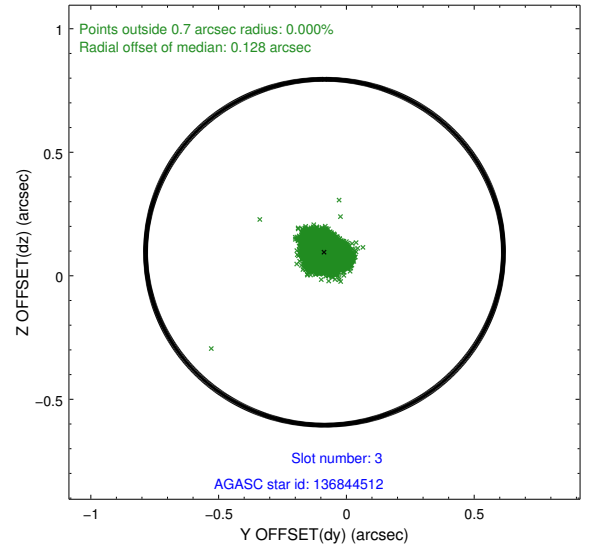
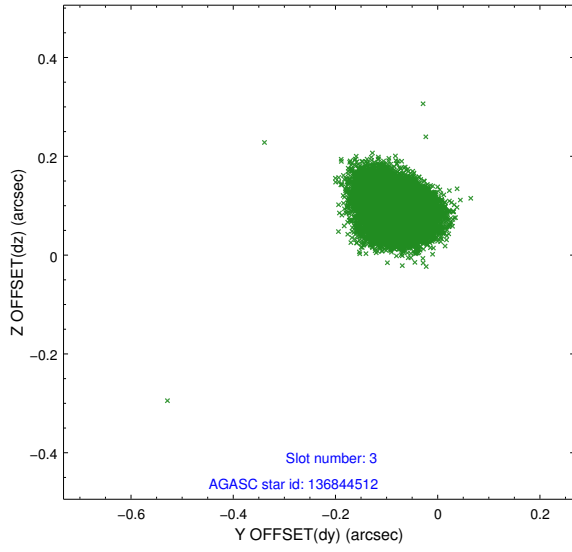


Slot Statistics

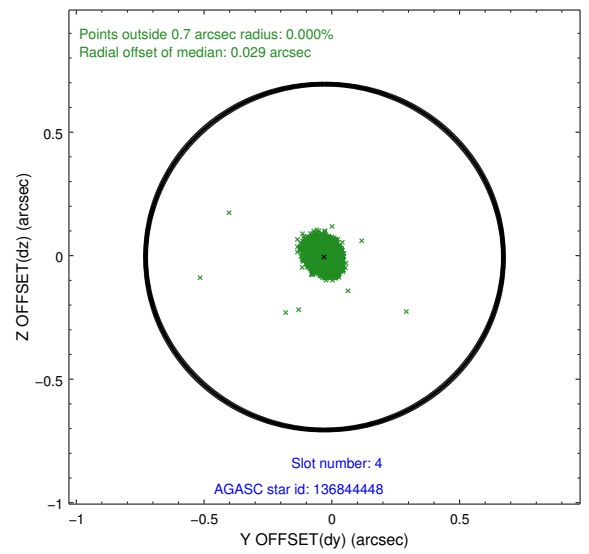
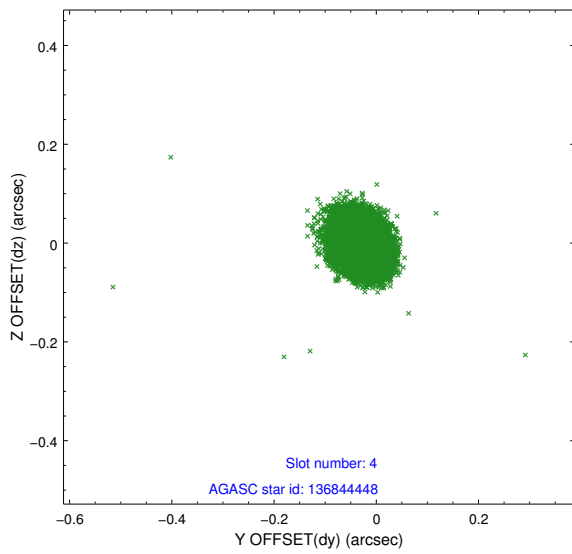
slot	status	id	mag	n_pts	med_dy	med_dz	dr1	dr2	ra	dec	mean_y	mean_z
0	FID	ACIS-I-1	7.25	7372	-0.037	0.048	0.009	0.016	0.000000	0.000000	938.43	-828.30
1	FID	ACIS-I-4	7.19	7372	-0.022	0.008	0.008	0.013	0.000000	0.000000	2158.53	1071.43
2	FID	ACIS-I-5	7.23	7374	-0.040	0.015	0.007	0.012	0.000000	0.000000	-1809.48	1069.37
3	GUIDE	136844512	7.40	14746	-0.086	0.095	0.054	0.085	286.436543	9.770401	2042.67	-622.72
4	GUIDE	136844448	7.81	14744	-0.029	-0.006	0.042	0.069	286.569231	9.582775	1287.86	-294.31
5	GUIDE	136315920	8.22	14743	0.027	-0.130	0.066	0.103	286.430663	9.097145	791.06	1452.58
6	GUIDE	136316696	7.90	14745	0.089	0.059	0.060	0.097	287.190166	9.367792	-994.99	-792.67
7	GUIDE	136316048	8.25	14746	-0.001	-0.017	0.058	0.091	286.616424	9.034888	110.97	1297.46

2.4 Star Slots

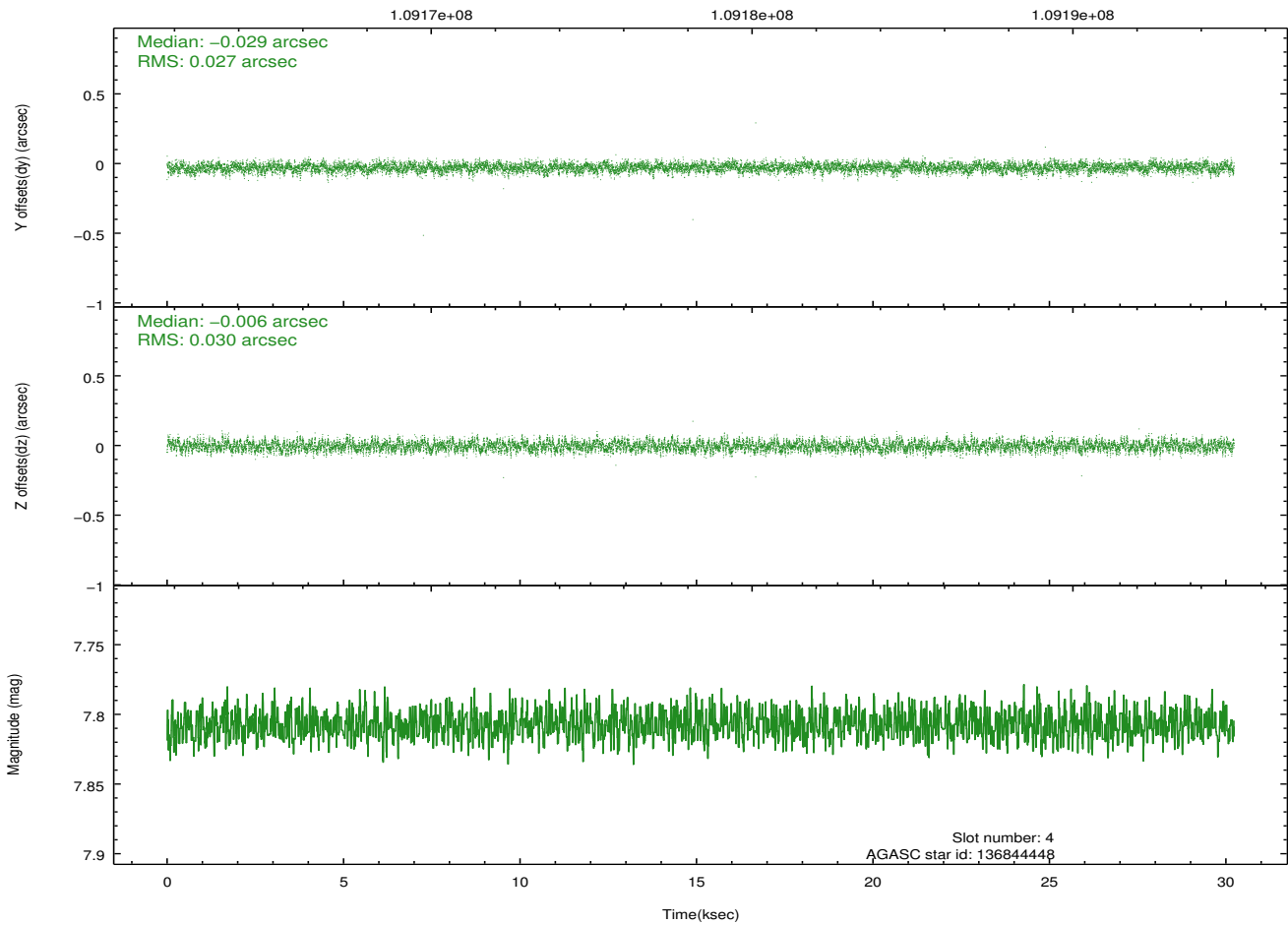
2.4.1 Slot 3



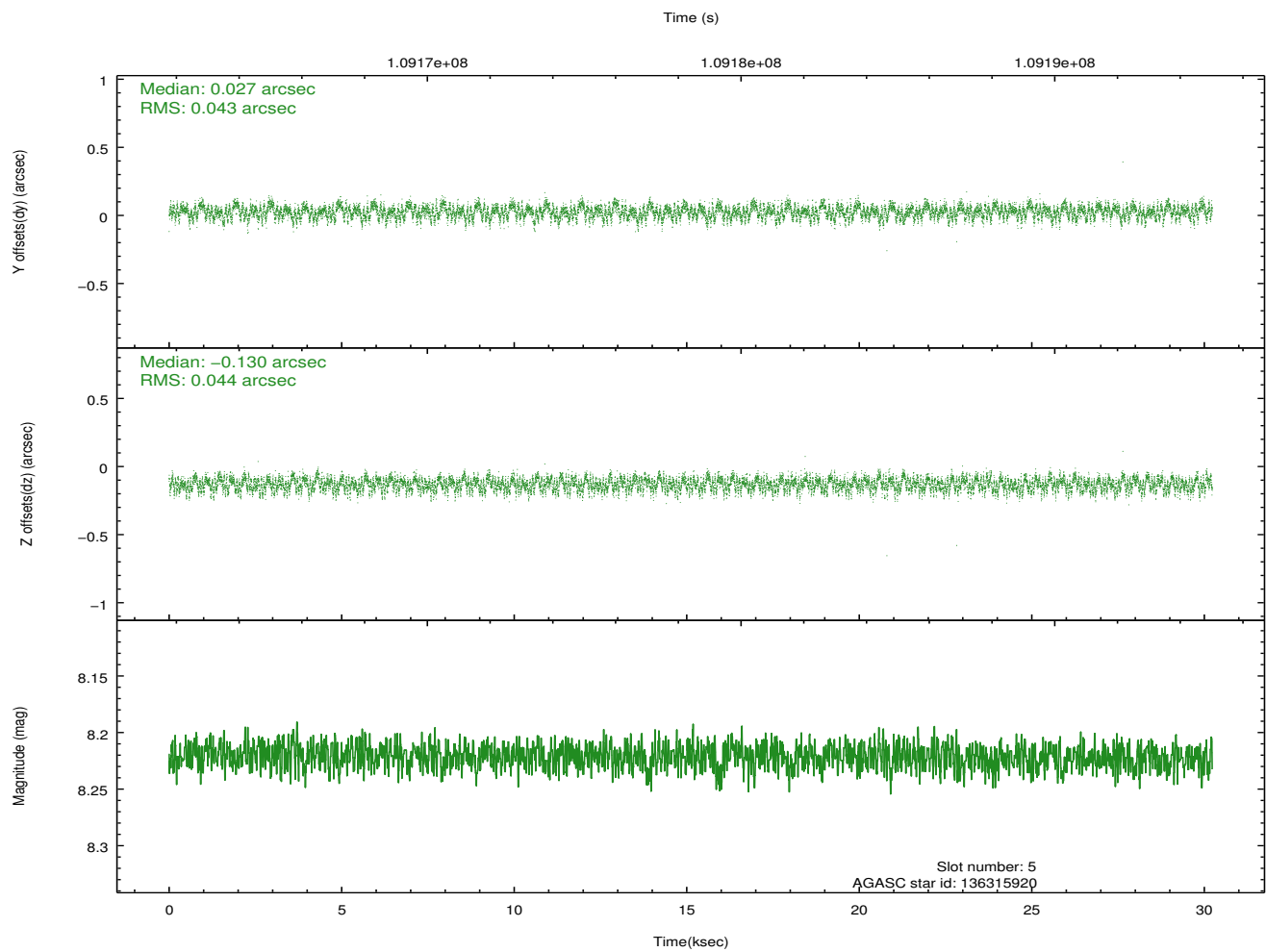
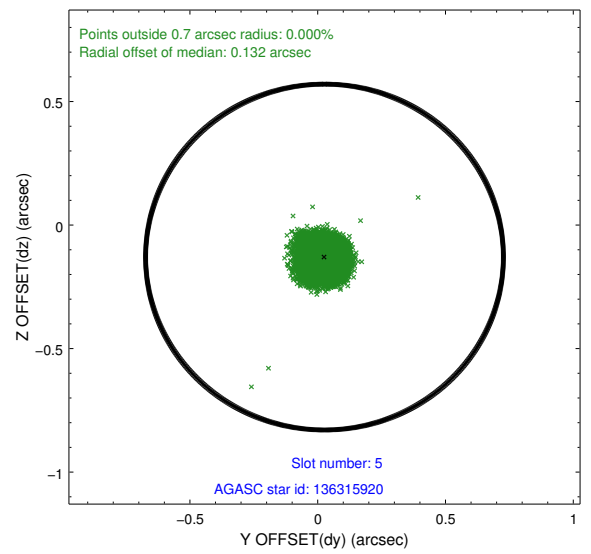
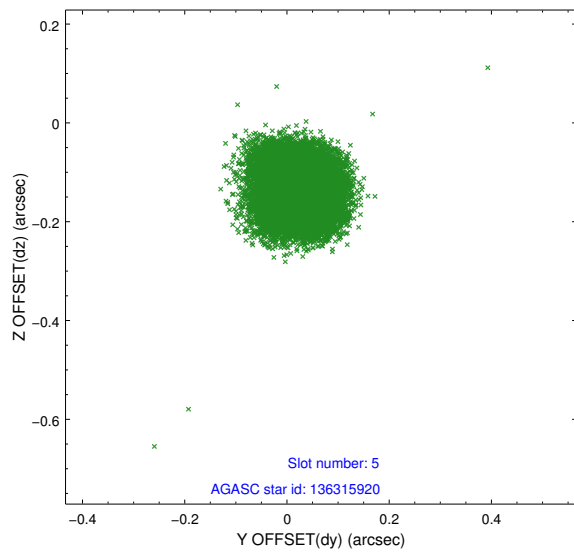
2.4.2 Slot 4



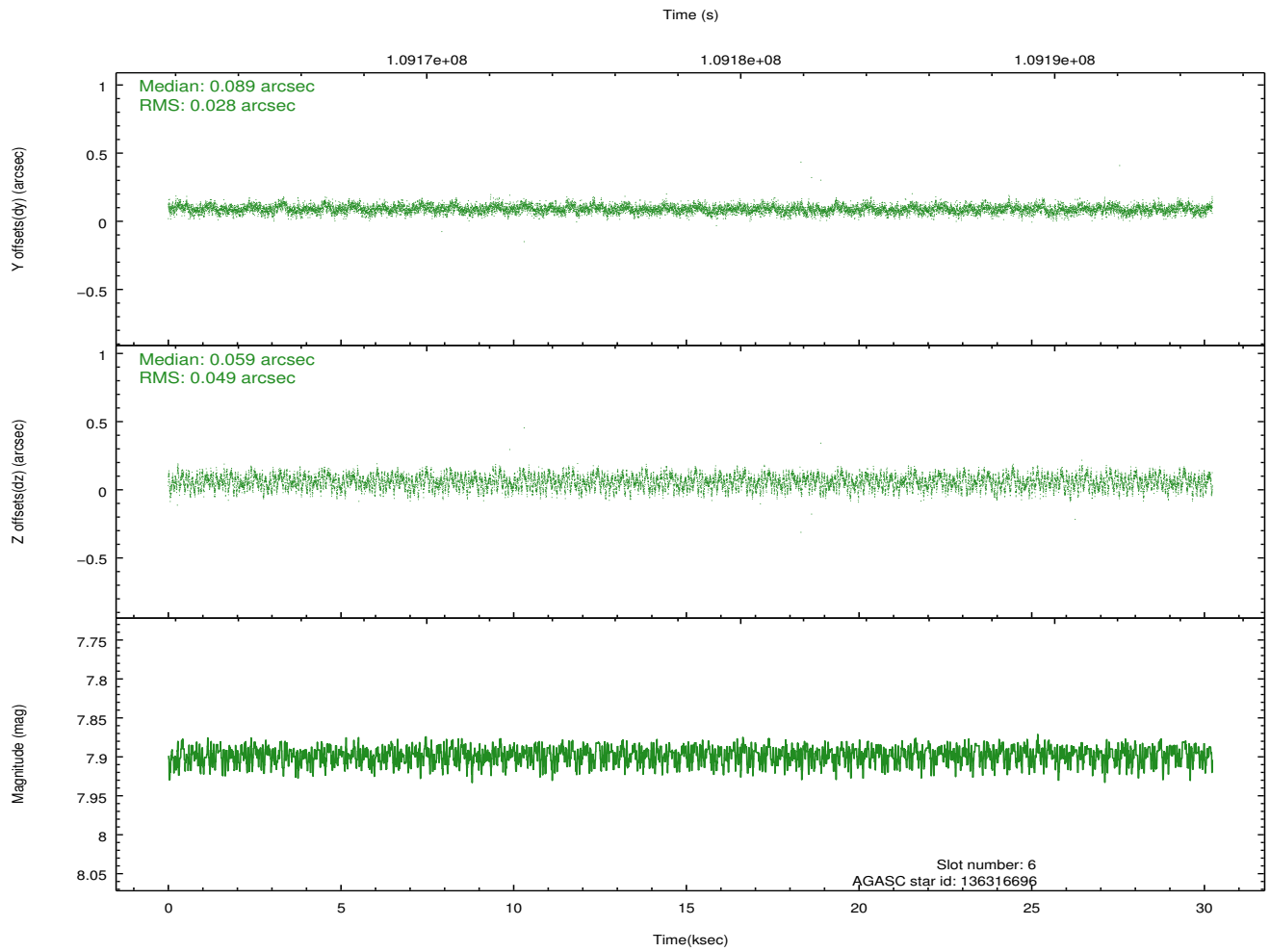
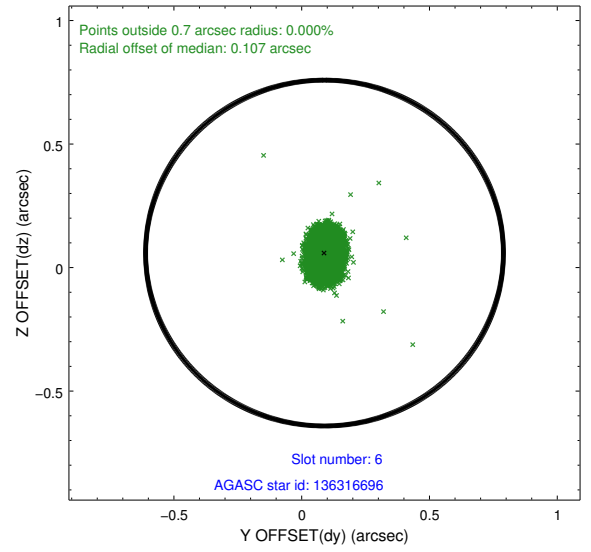
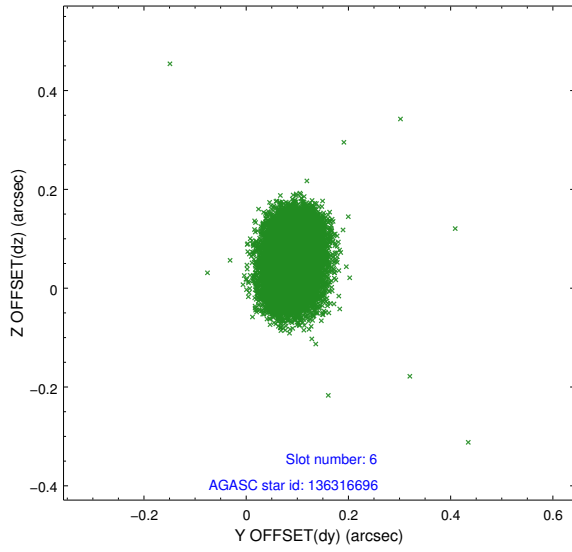
Time (s)



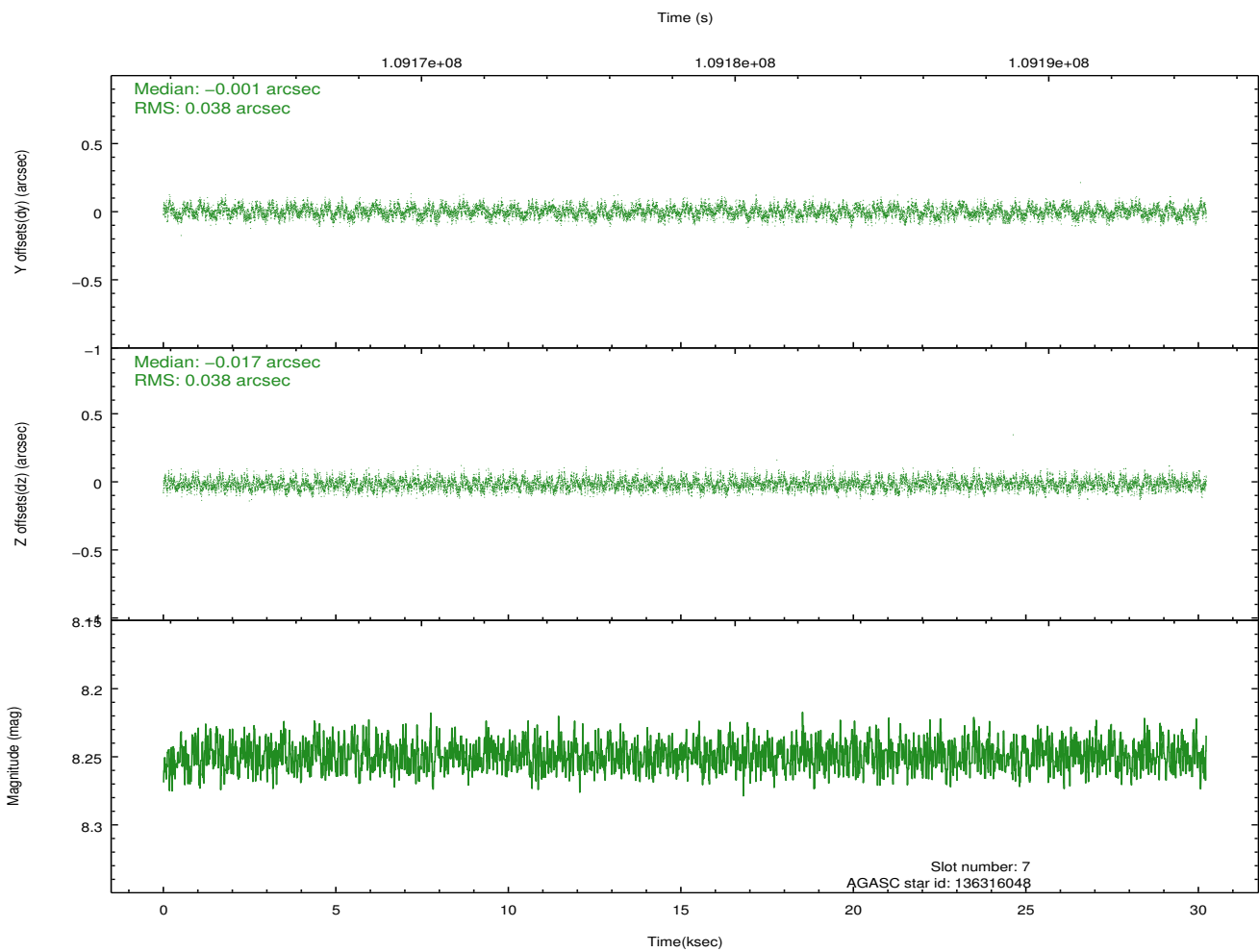
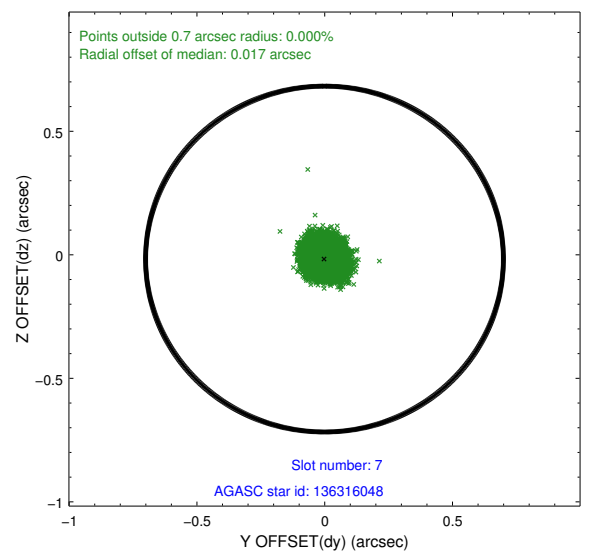
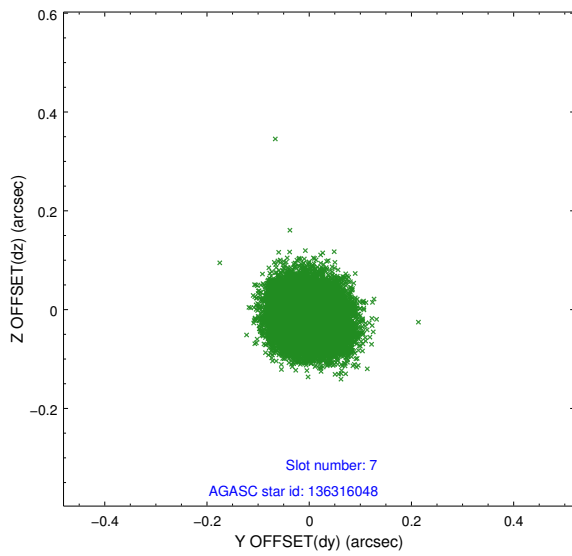
2.4.3 Slot 5



2.4.4 Slot 6

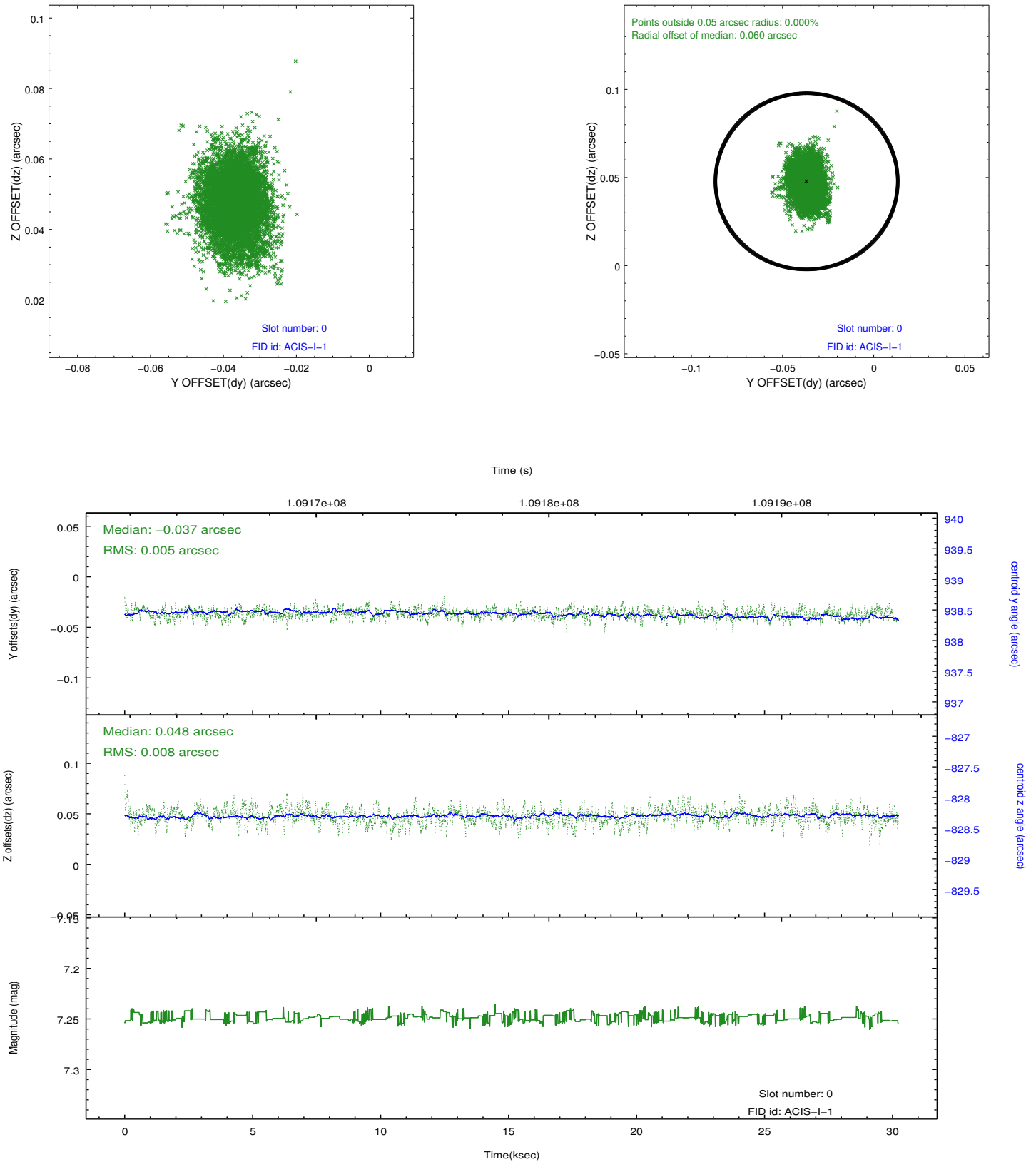


2.4.5 Slot 7

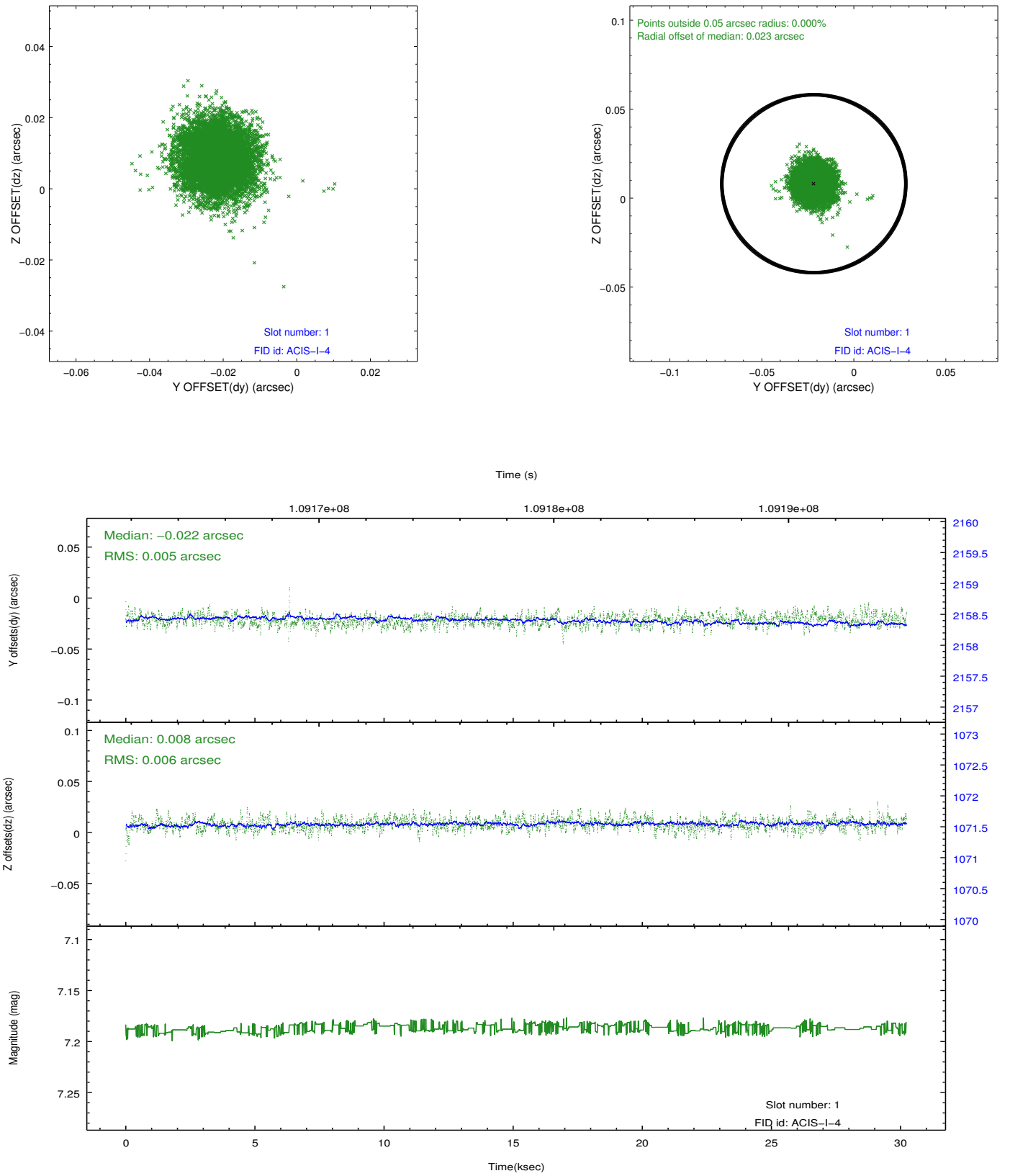


2.5 FID Slots

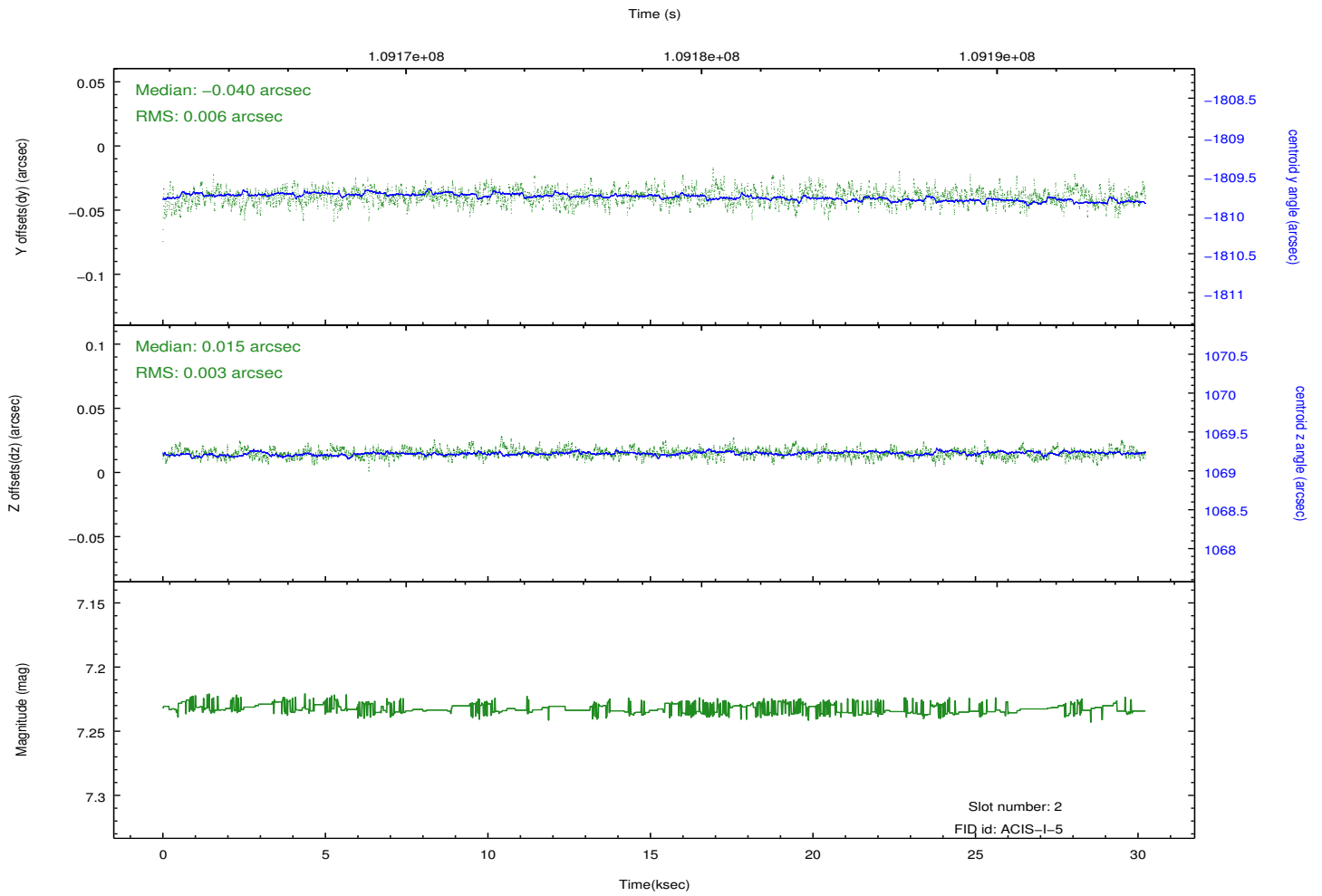
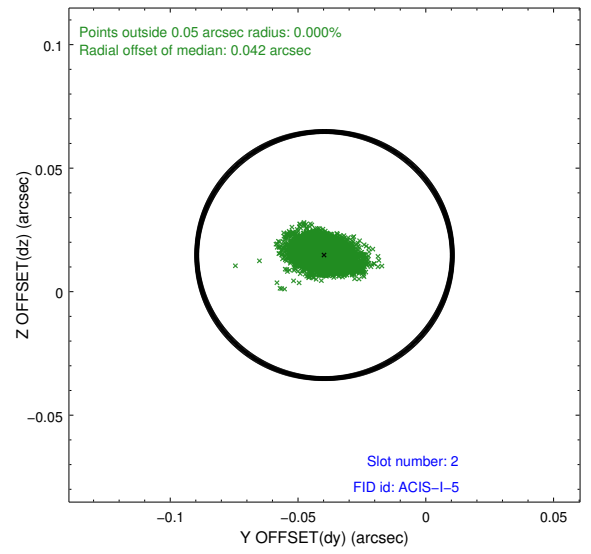
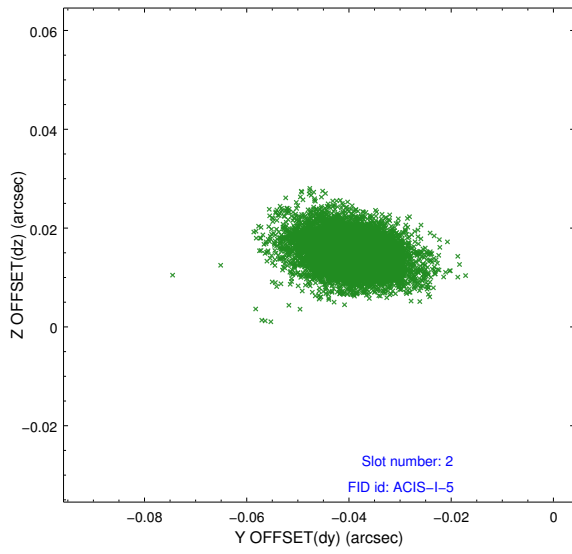
2.5.1 Slot 0



2.5.2 Slot 1



2.5.3 Slot 2



A Summary

A.1 Status

V&V Scientist	Beth Sundheim
V&V Date (YYYY-MM-DD)	2012.09.20
V&V Edition	1
V&V Disposition and Status	OK
V&V Charge Time	30.1

A.2 Comments

Charge time for this observation remains at previous value of 30.1 ksec.