

V&V Reference Report

L2 ASCDS Version : 8.4.5

Observation 2564 - L2 Version 3
Chandra X-Ray Center

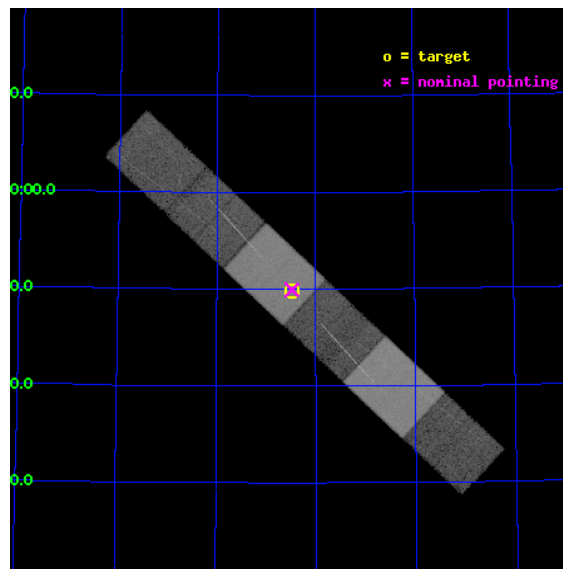
L2 Processing Date : Oct 4 2012

Contents

1	Front	2
2	OBI	3
2.1	OBI	3
2.1.1	Images	3
2.1.2	Bias	3
2.1.3	Parameters	4
2.1.4	Events	4
2.2	Compared Parameters	5
2.3	Aspect	6
2.4	Star Slots	9
2.4.1	Slot 3	9
2.4.2	Slot 4	10
2.4.3	Slot 5	11
2.4.4	Slot 6	12
2.4.5	Slot 7	13
2.5	FID Slots	14
2.5.1	Slot 0	14
2.5.2	Slot 1	15
2.5.3	Slot 2	16
3	Gratings	17
3.1	HEG Arm	17
3.2	MEG Arm	19
A	Summary	21
A.1	Status	21
A.2	Comments	21

1 Front

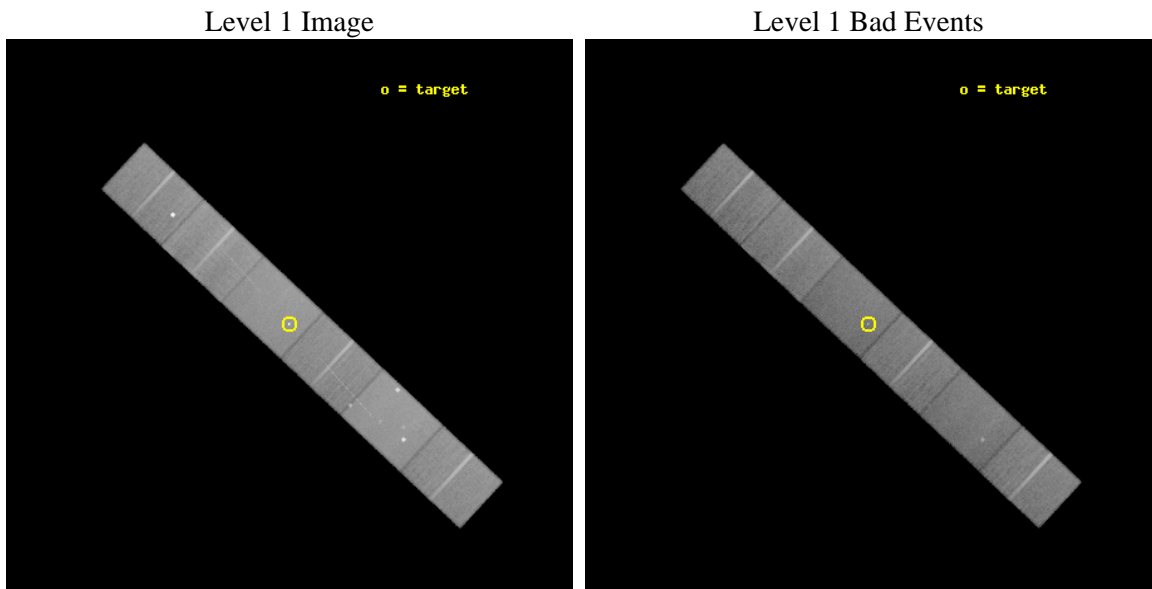
seq_num	200172	Sequence number
obs_id	2564	Observation id
title	A TALE OF TWO G STARS	Proposal title
observer	Dr. Thomas Ayres	Principal investigator
object	24 URSAE MAJORIS	Source name
dtcycle	0	
cycle	P	events from which exps? Prim/Second/Both
ra_targ	143.62	Observer's specified target RA [deg]
dec_targ	69.830278	Observer's specified target Dec [deg]
ra_nom	143.61978056822	Nominal RA [deg]
dec_nom	69.832499263196	Nominal Dec [deg]
roll_nom	223.05682897581	Nominal Roll [deg]
revision	3	Processing version of data
ontime	45102.5	Sum of GTIs [s]
livetime	44374.055504832	Livetime [s]
ontime4	45102.5	Sum of GTIs [s]
ontime5	45102.5	Sum of GTIs [s]
ontime6	45102.5	Sum of GTIs [s]
ontime7	45102.5	Sum of GTIs [s]
ontime8	45102.5	Sum of GTIs [s]
ontime9	45102.5	Sum of GTIs [s]
l2events	338461	Number of level 2 events



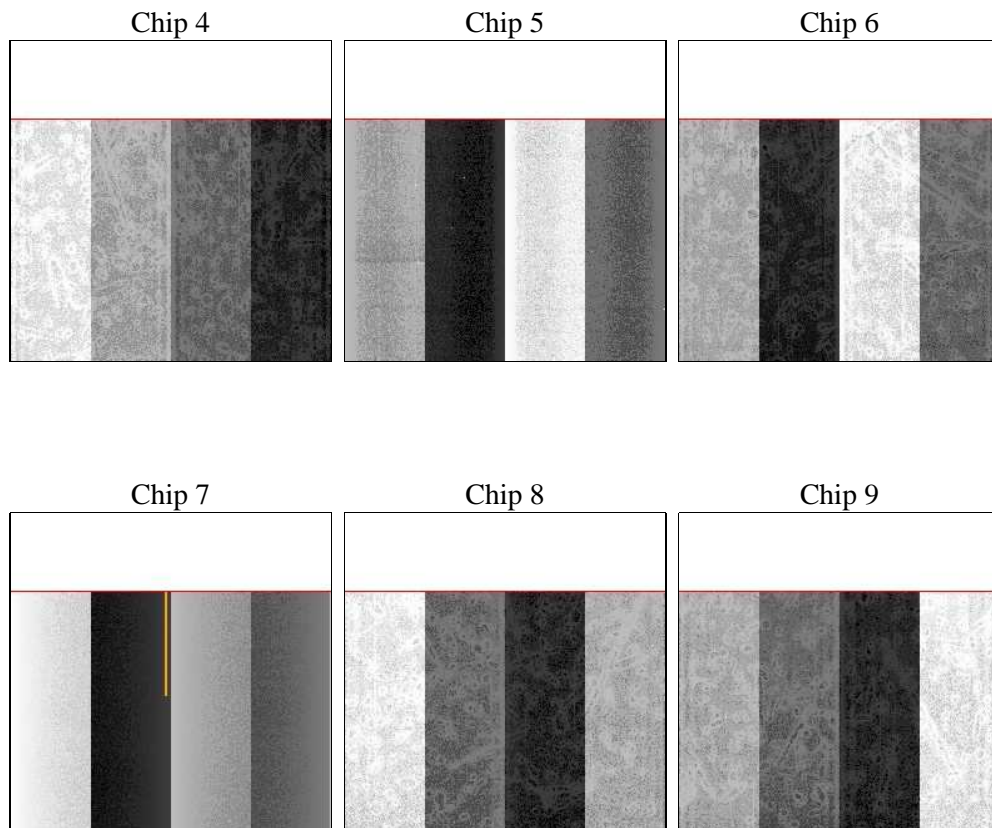
2 OBI

2.1 OBI

2.1.1 Images



2.1.2 Bias



2.1.3 Parameters

obi_num	1	Obi number	sched_exp_time	45000.000000	[s] Scheduled observation exposure time
ascdsver	8.4.5	Processing system revision	ontime	45102.5	Sum of GTIs [s]
caldbver	4.5.2	 	ontime4	45102.5	Sum of GTIs [s]
date	2012-10-04T18:13:33	Date and time of file creation	ontime5	45102.5	Sum of GTIs [s]
revision	3	Processing version of data	ontime6	45102.5	Sum of GTIs [s]
			ontime7	45102.5	Sum of GTIs [s]
			ontime8	45102.5	Sum of GTIs [s]
			ontime9	45102.5	Sum of GTIs [s]
			l1events	1536690	Number of level 1 events

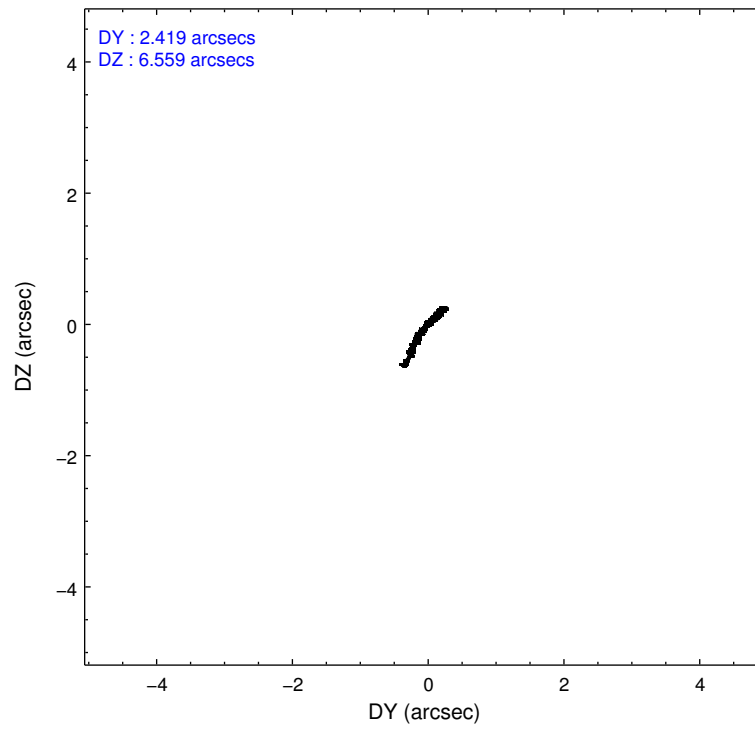
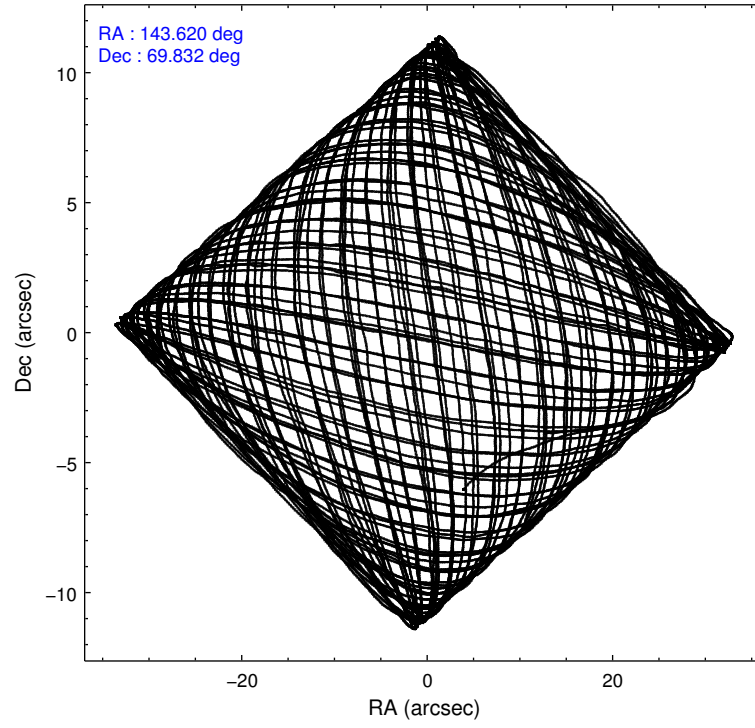
2.1.4 Events

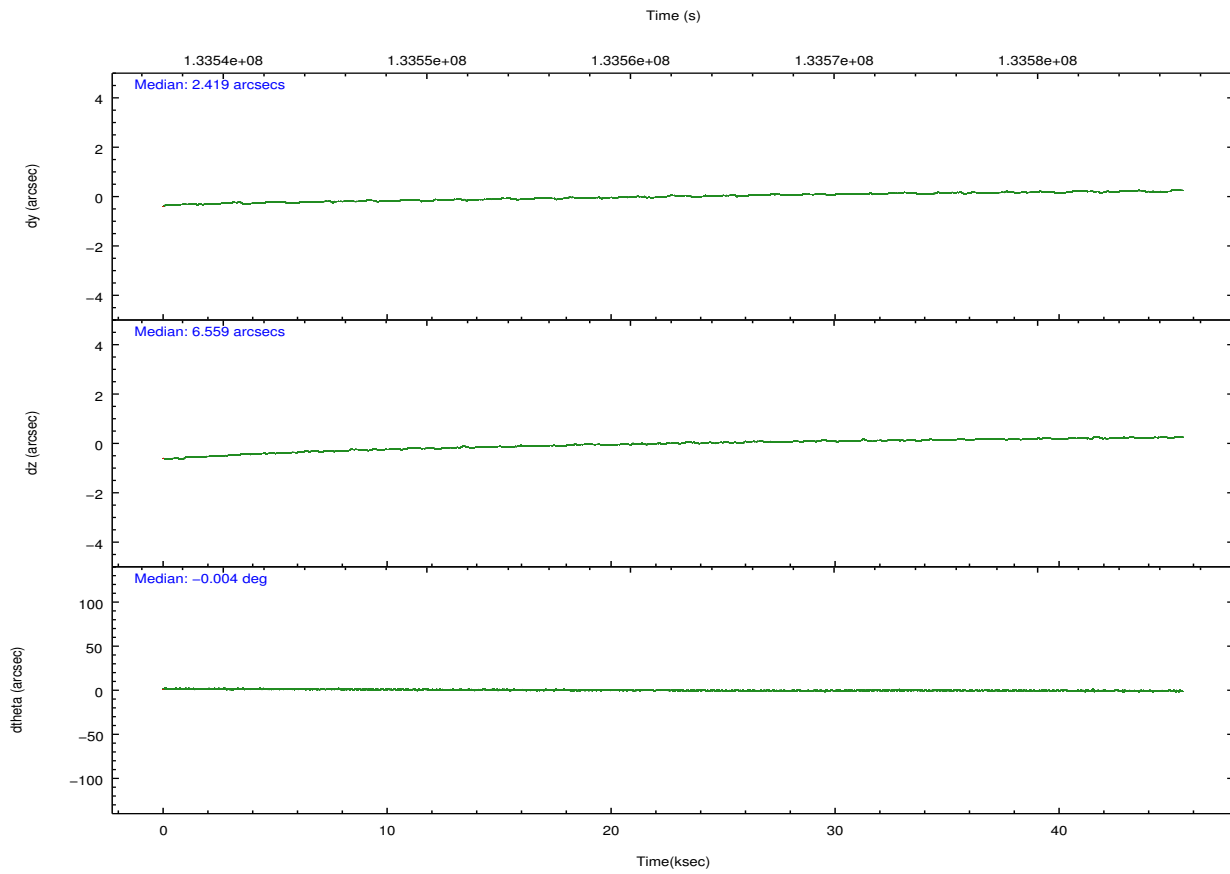
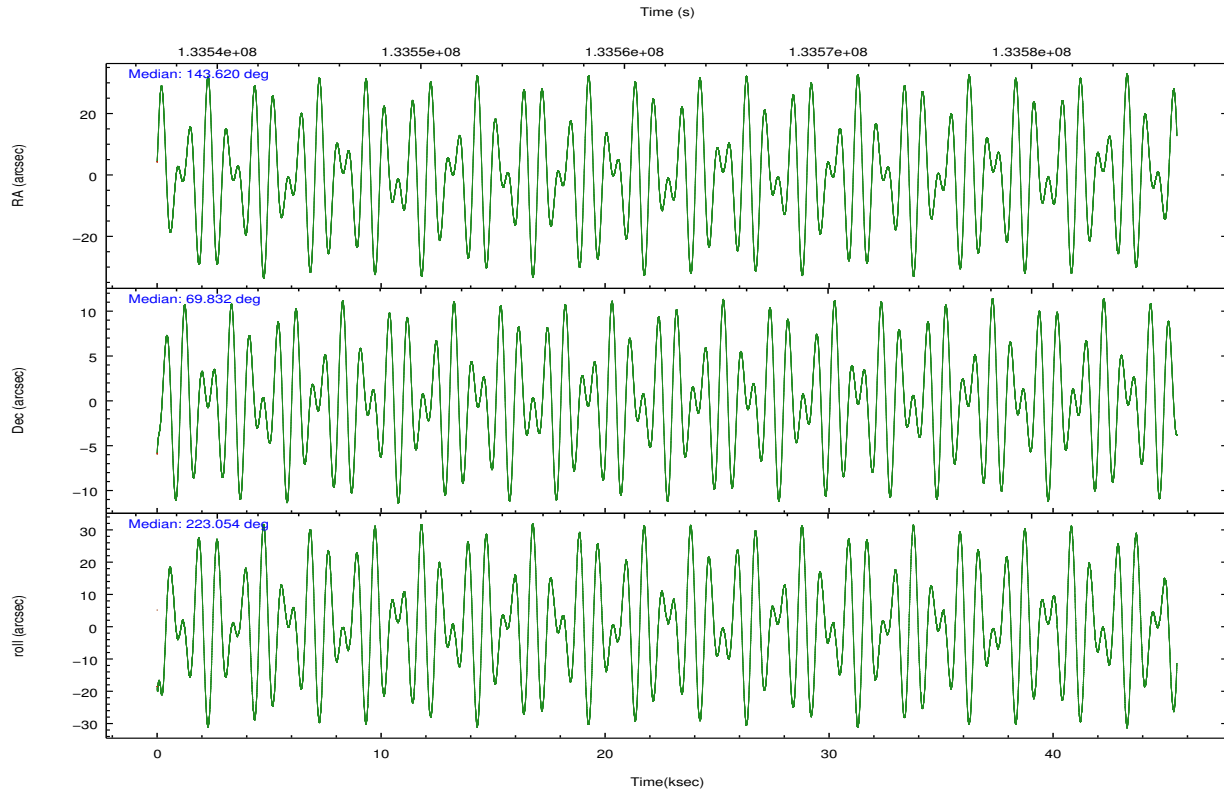
	ccd 4	ccd 5	ccd 6	ccd 7	ccd 8	ccd 9		ccd 4	ccd 5	ccd 6	ccd 7	ccd 8	ccd 9
level 1 events	235375	310008	216487	278126	269234	227460	grade 0 events	10339	25755	11094	11944	18776	24552
rejected events	209186	161267	190337	158315	212461	185707		4%	8%	5%	4%	6%	10%
rejected %	88%	52%	87%	56%	78%	81%	grade 1 events	108	1484	79	292	145	99
								0%	0%	0%	0%	0%	0%
							grade 2 events	6231	38916	5066	24790	11639	7020
								2%	12%	2%	8%	4%	3%
							grade 3 events	2574	6940	2635	11396	6382	2695
								1%	2%	1%	4%	2%	1%
							grade 4 events	2519	7022	2596	11302	5839	2503
								1%	2%	1%	4%	2%	1%
							grade 5 events	7609	23567	8934	26551	11482	9208
								3%	7%	4%	9%	4%	4%
							grade 6 events	4530	70142	4761	60401	14139	4986
								1%	22%	2%	21%	5%	2%
							grade 7 events	201465	136182	181322	131450	200832	176397
								85%	43%	83%	47%	74%	77%

2.2 Compared Parameters

Parameter	Planned	Actual	Parameter	Planned	Actual
Instrument	ACIS	ACIS	Obspar format version number	7	7
Detector	ACIS-456789	ACIS-456789	Obspar file type	PREDICTED	ACTUAL
Grating	HETG	HETG	Obspar update status	NONE	UPDATED
Data mode	FAINT	FAINT	Number of optional ACIS chips dropped	0	0
Observation mode	POINTING	POINTING	On-chip summing requested	N	N
[deg] Pointing RA	143.641831	143.6197805682177	Subarray requested	CUSTOM	CUSTOM
[deg] Pointing Dec	69.858654	69.83249926319593	Subarray start row	1	1
[deg] Pointing Roll	222.879507	223.0568289758114	Subarray row count	774	774
[mm] SIM focus pos	-0.684267	-0.6828225247311905	Alternating exposures requested	N	N
[mm] SIM defocus	0	0.001444936568705701	[s] Primary exposure time	0.000000	2.5
[mm] SIM translation stage pos	-187.132523	-187.1254020033014			
[mm] SIM translation stage offset	-3	-3.007120579706367			
[s] Observation start time (MET)	133539858.184000	133538727.83178			
Observation start date	2002-03-26T14:23:14	2002-03-26T14:05:27			
[s] Observation end time (MET)	133584858.184000	133585336.12117			
Observation end date	2002-03-27T02:53:14	2002-03-27T03:02:16			
Read mode	TIMED	TIMED			

2.3 Aspect



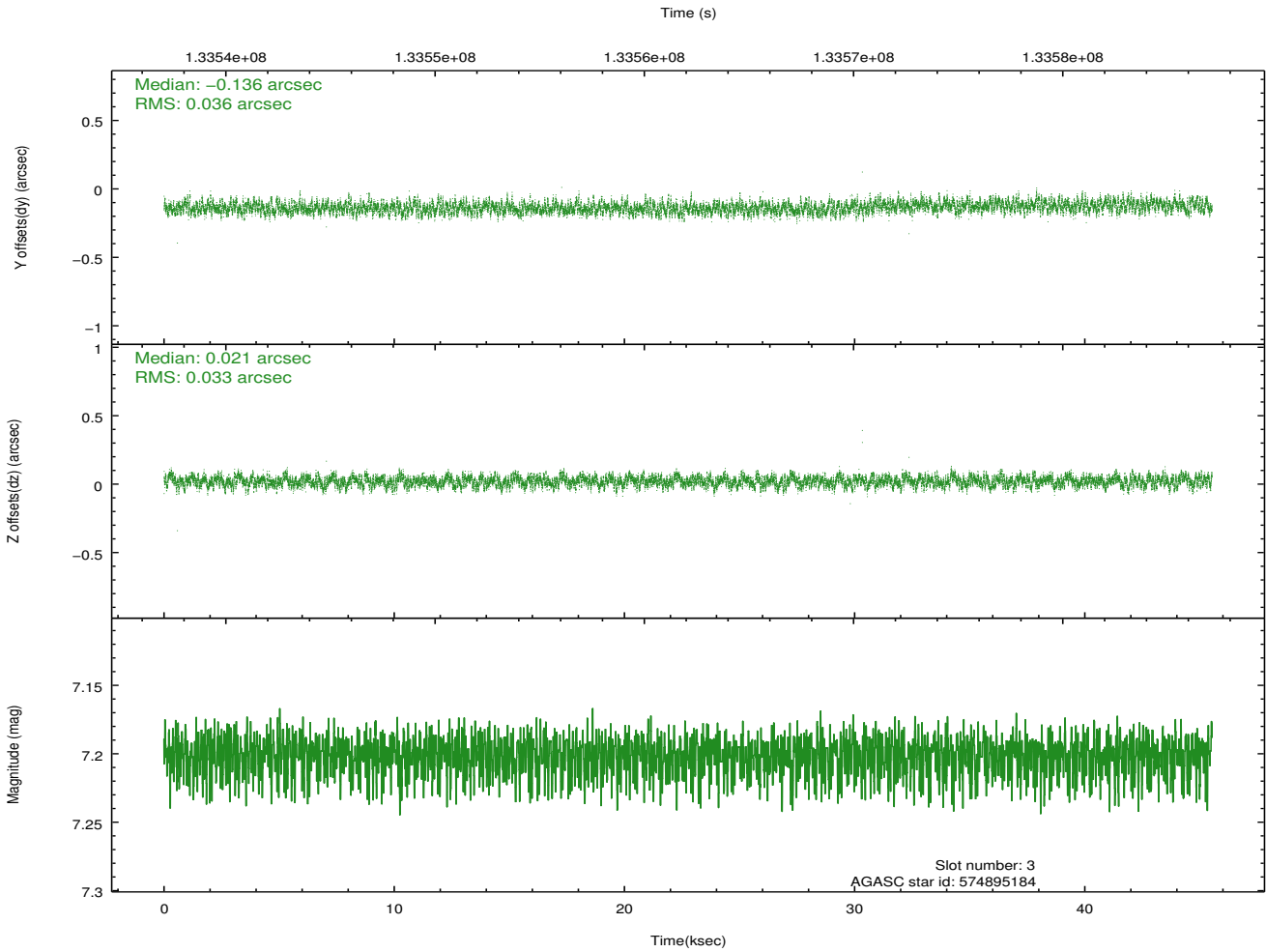
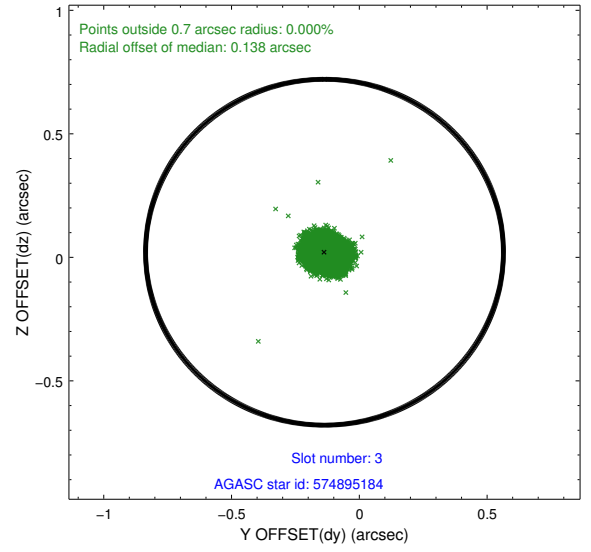
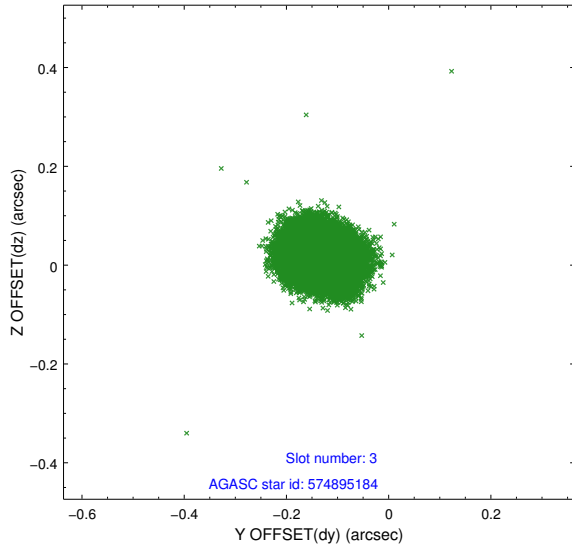


Slot Statistics

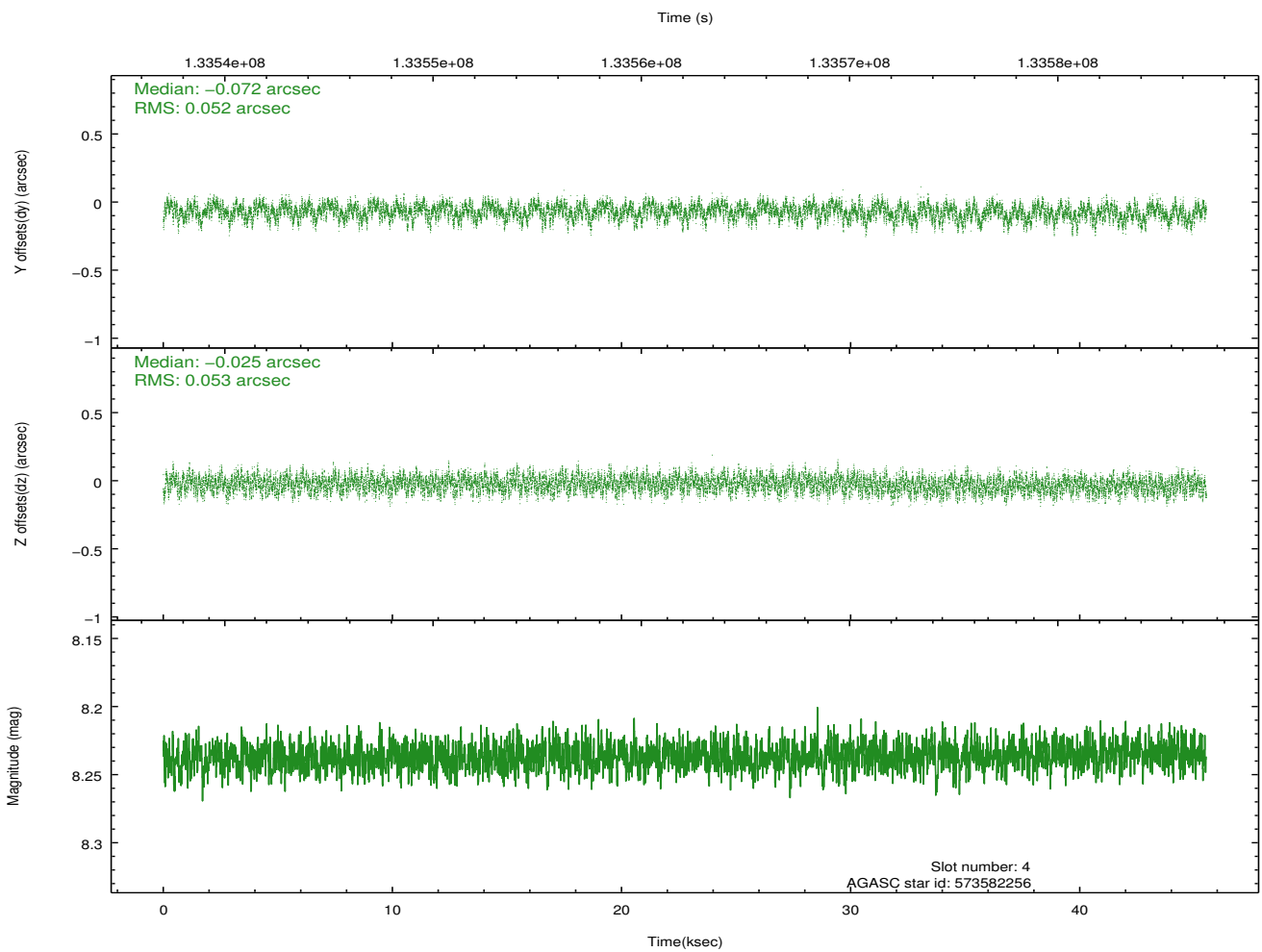
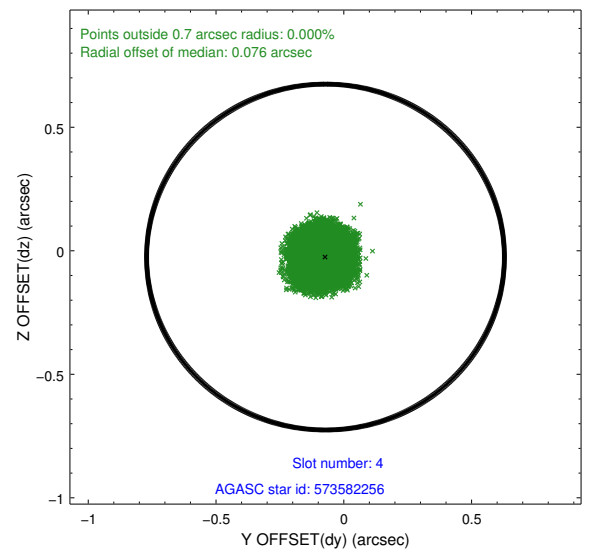
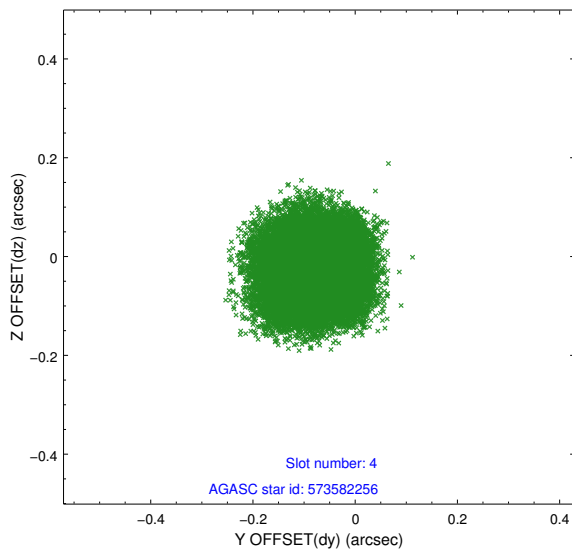
slot	status	id	mag	n_pts	med_dy	med_dz	dr1	dr2	ra	dec	mean_y	mean_z
0	FID	ACIS-S-2	7.10	11105	-0.037	-0.063	0.012	0.021	0.000000	0.000000	-754.86	-1789.80
1	FID	ACIS-S-4	7.19	11104	0.001	0.034	0.015	0.023	0.000000	0.000000	2158.45	118.77
2	FID	ACIS-S-5	7.23	11105	0.005	0.036	0.013	0.023	0.000000	0.000000	-1807.67	112.43
3	GUIDE	574895184	7.20	22207	-0.136	0.021	0.053	0.083	144.571194	70.266109	-1831.70	-312.93
4	GUIDE	573582256	8.24	22203	-0.072	-0.025	0.081	0.125	143.901691	69.156997	1474.41	2076.69
5	GUIDE	574896672	9.34	22191	-0.038	0.048	0.076	0.121	144.520516	70.337168	-1956.92	-543.92
6	GUIDE	573583384	9.42	22193	0.111	-0.047	0.120	0.191	142.247635	69.383402	2445.69	36.17
7	GUIDE	573578552	9.47	22193	0.140	0.006	0.116	0.193	141.668881	69.706297	2151.58	-1303.47

2.4 Star Slots

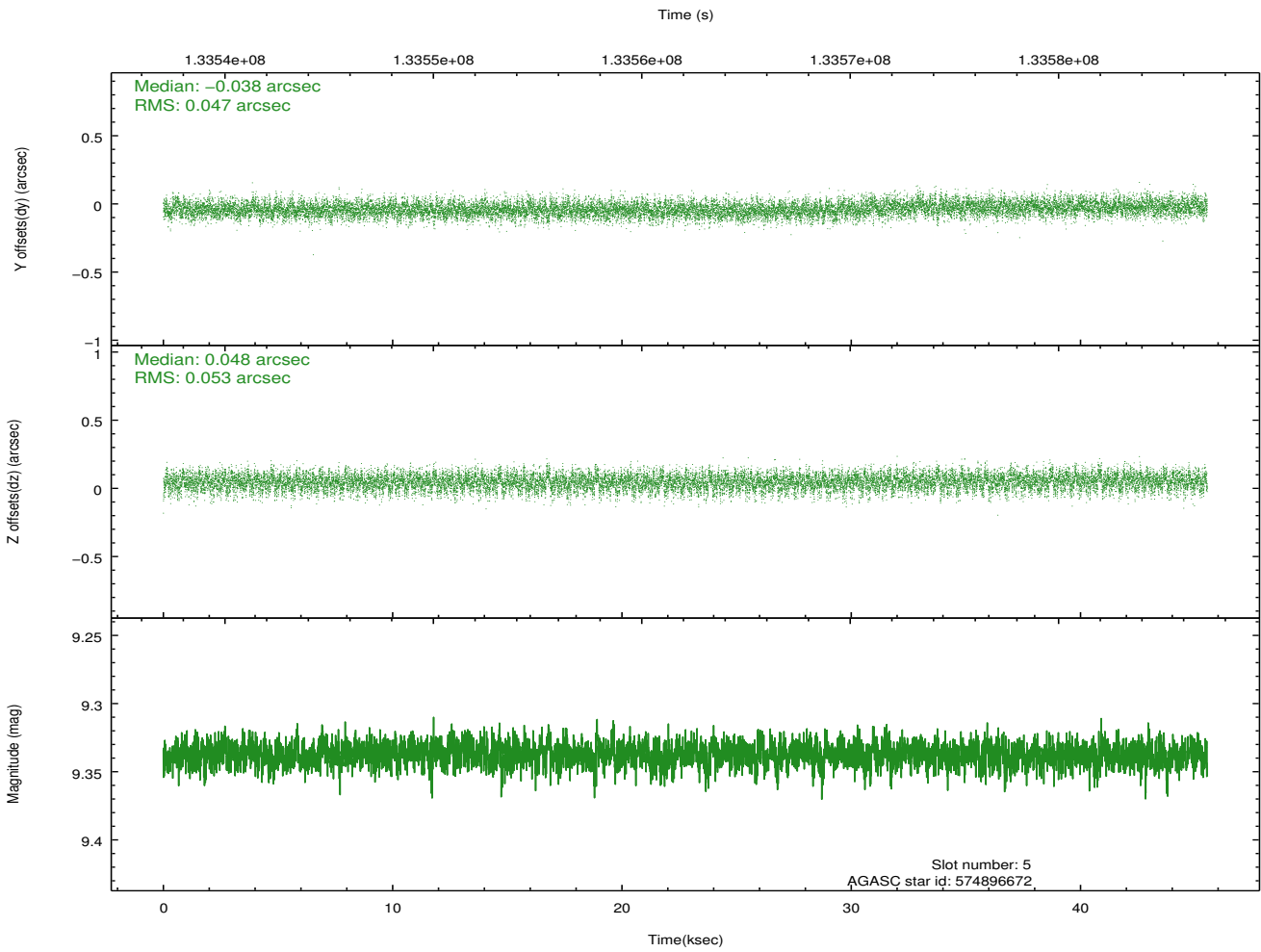
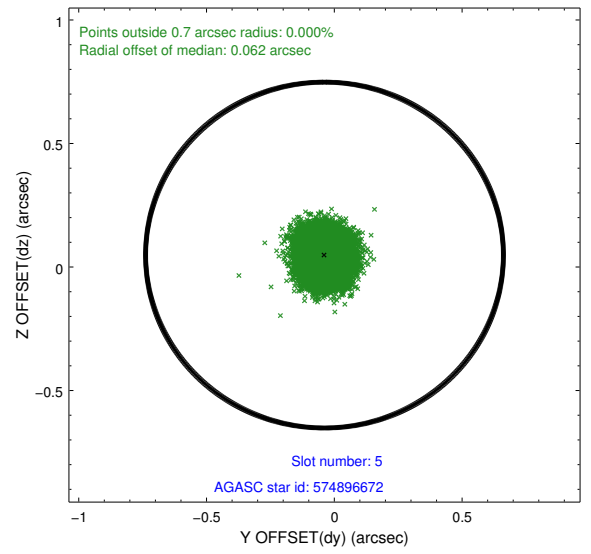
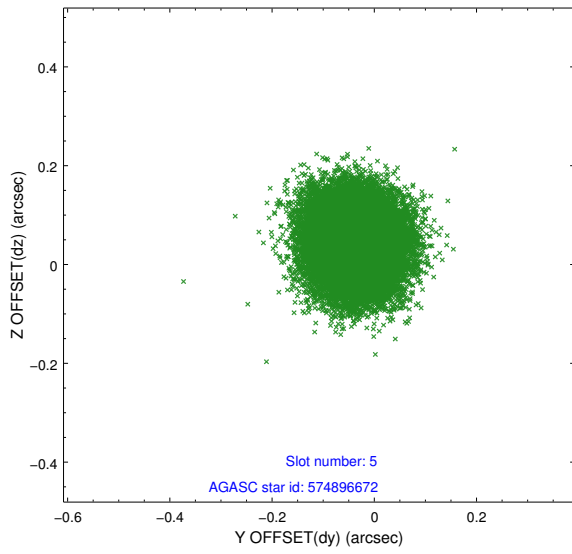
2.4.1 Slot 3



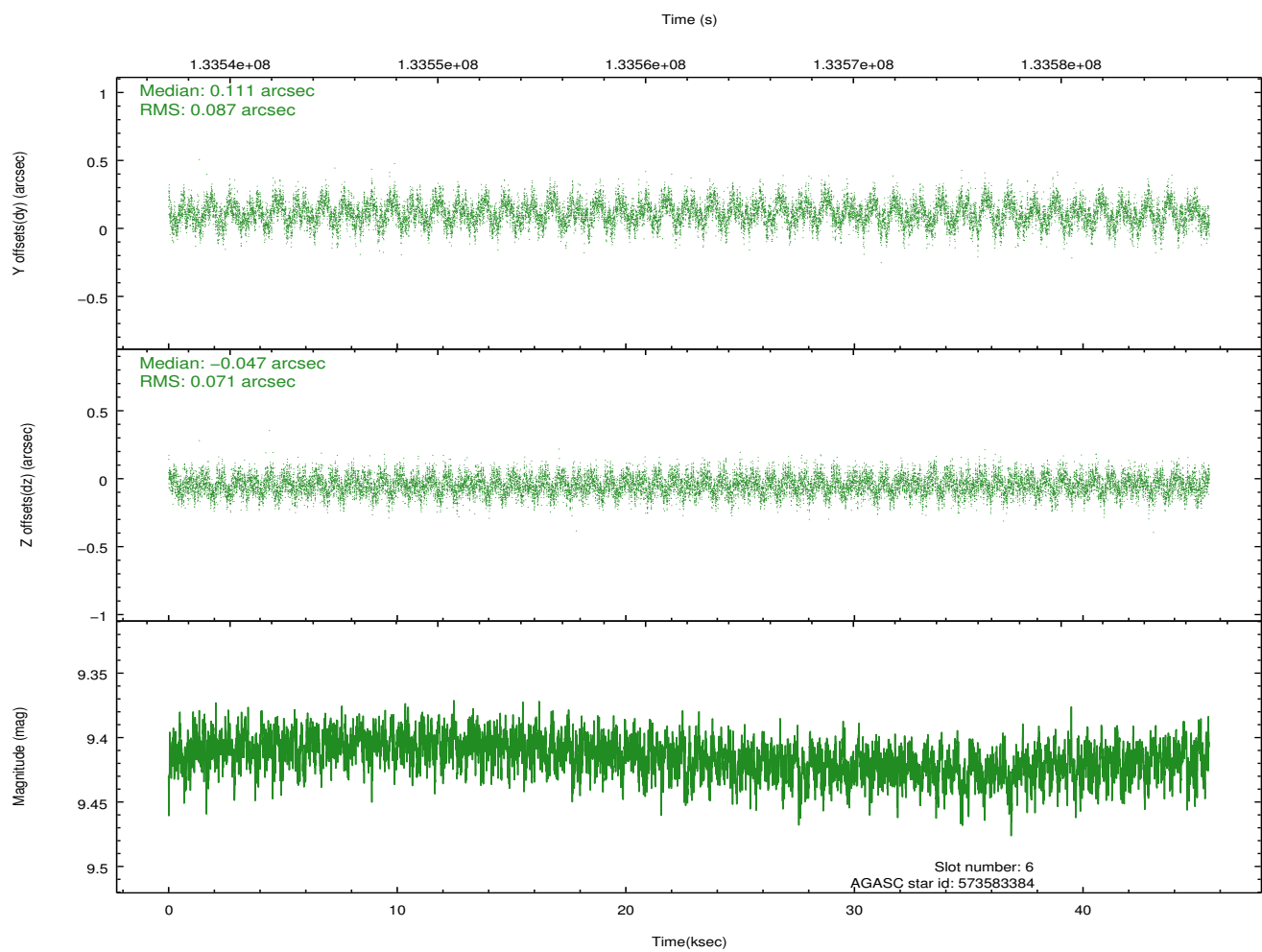
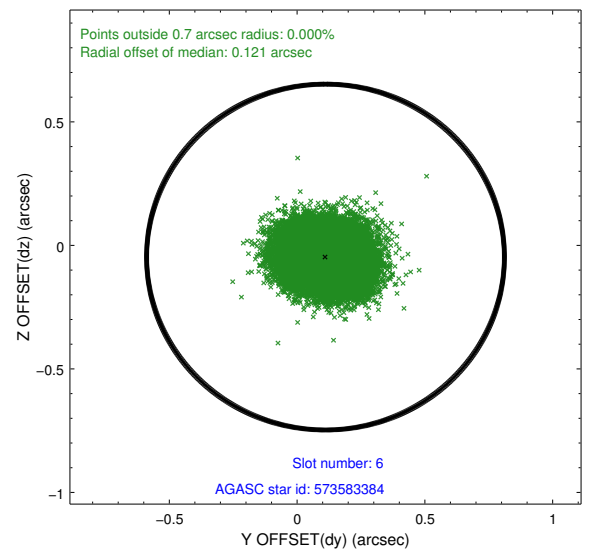
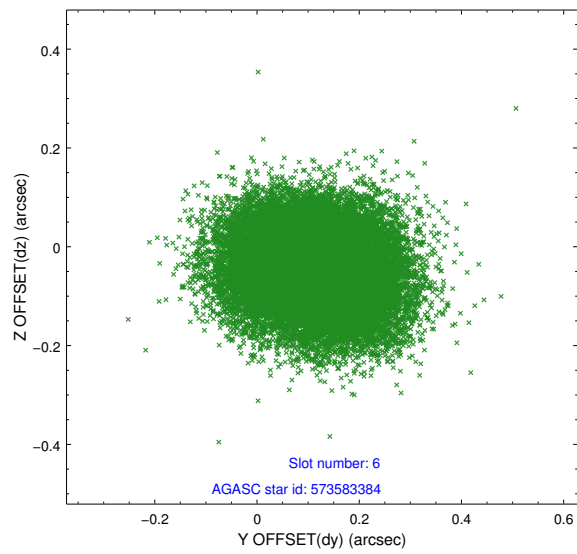
2.4.2 Slot 4



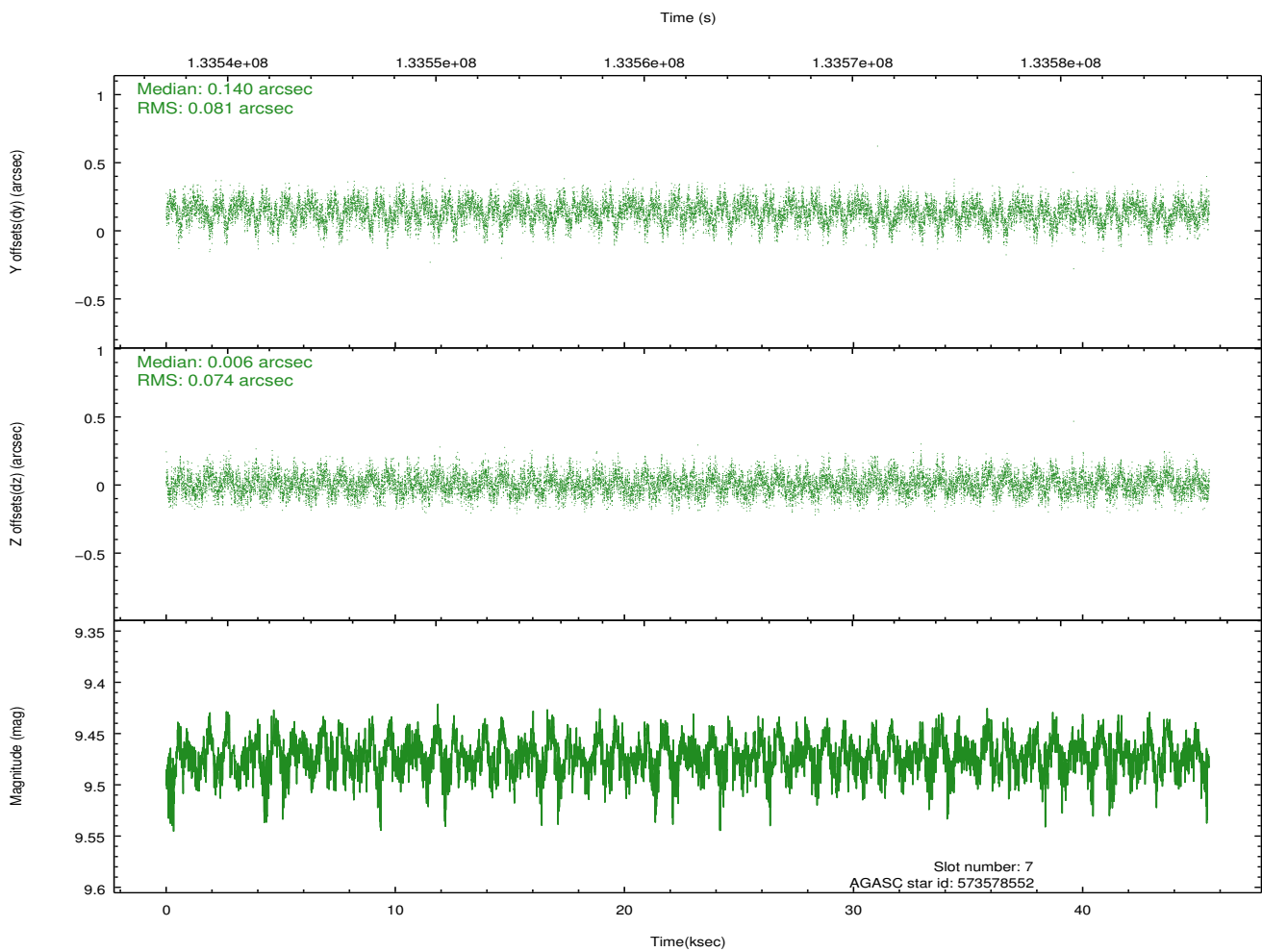
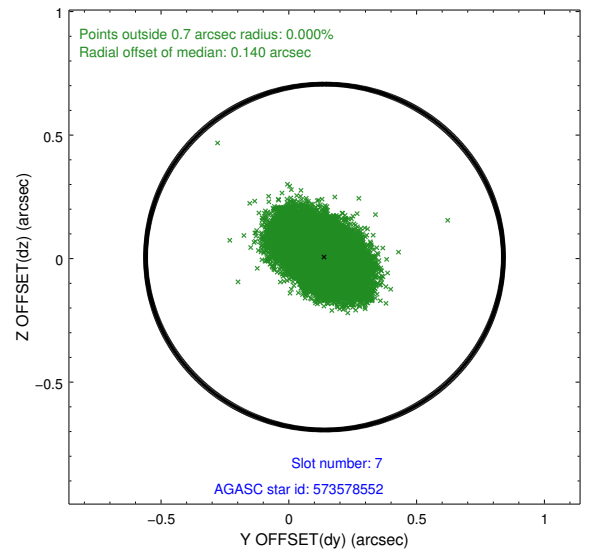
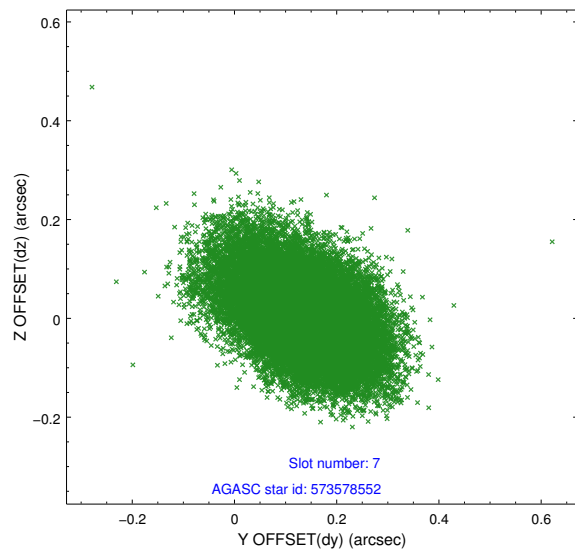
2.4.3 Slot 5



2.4.4 Slot 6

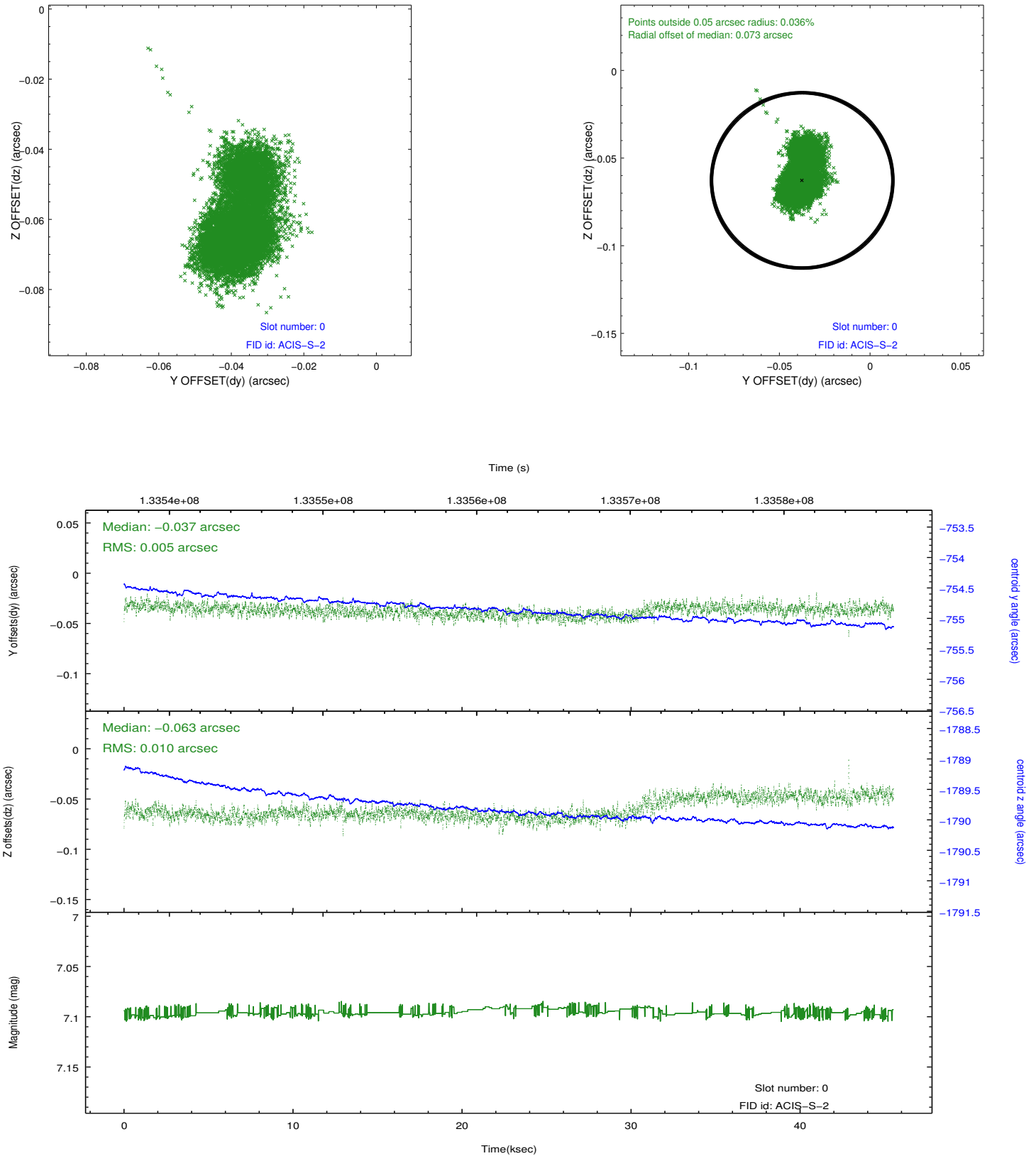


2.4.5 Slot 7

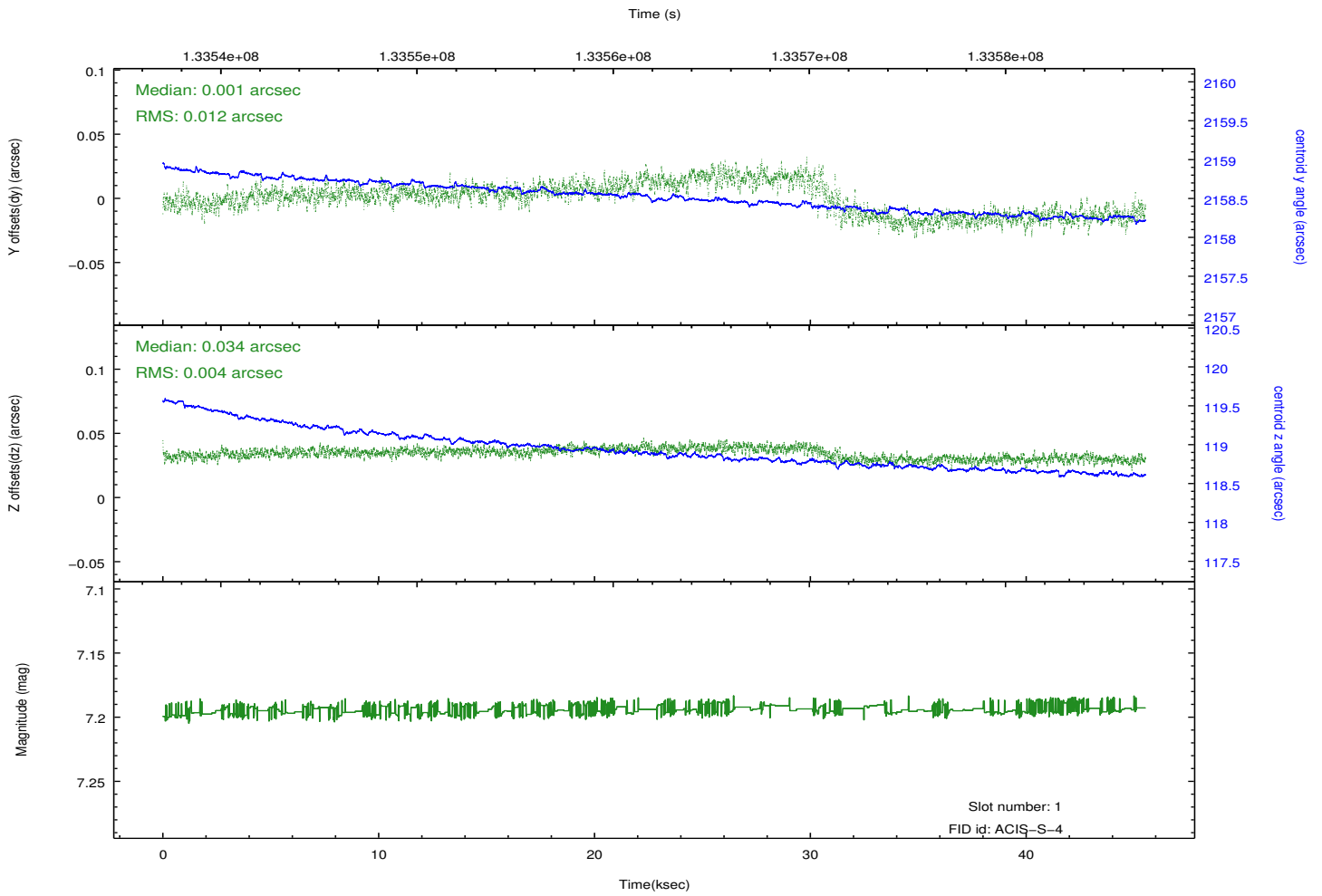
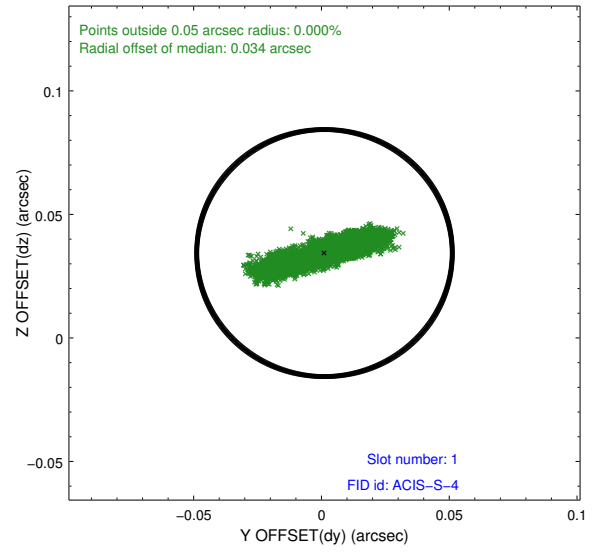
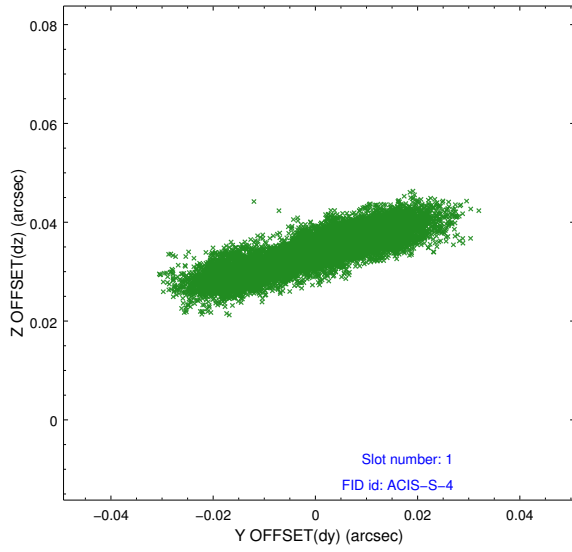


2.5 FID Slots

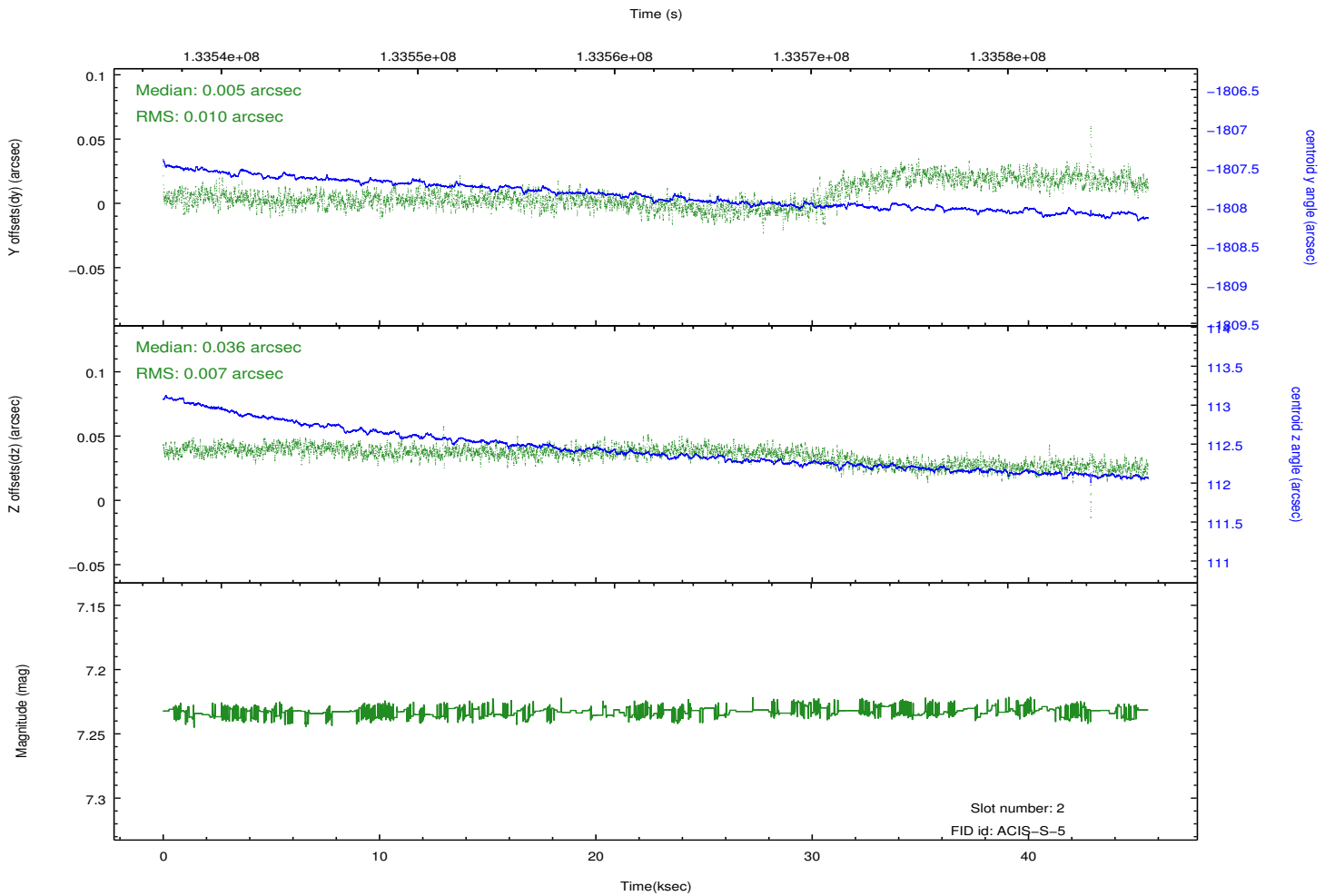
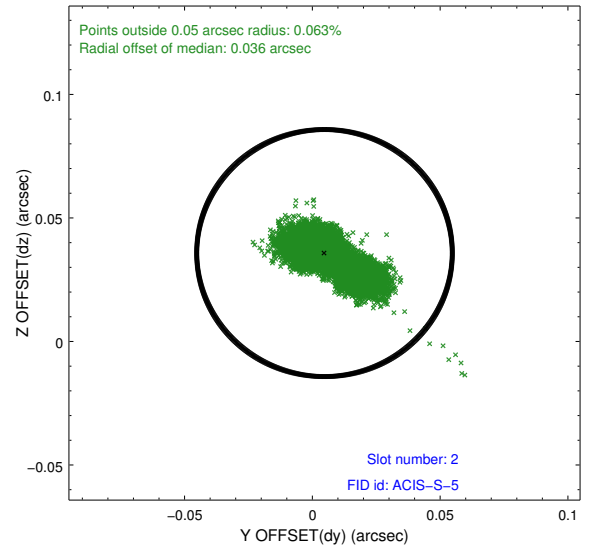
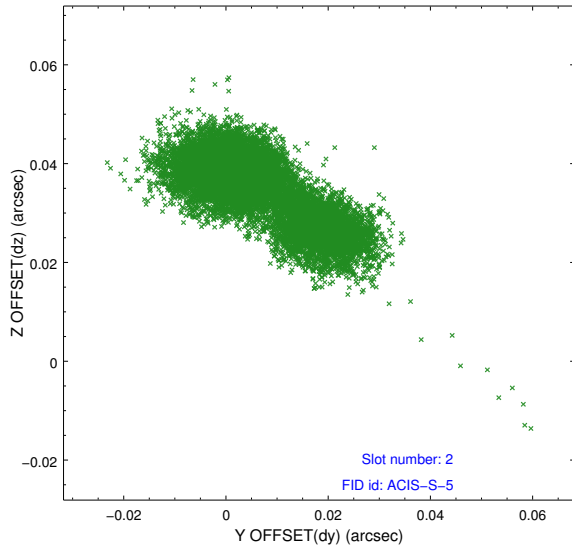
2.5.1 Slot 0



2.5.2 Slot 1



2.5.3 Slot 2

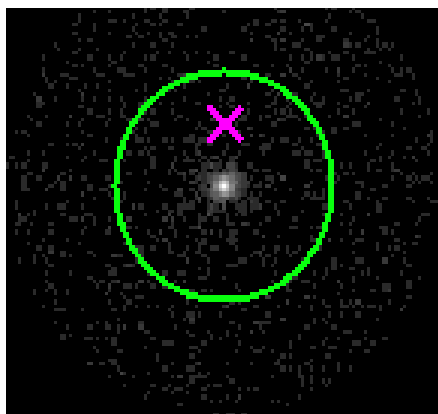


3 Gratings

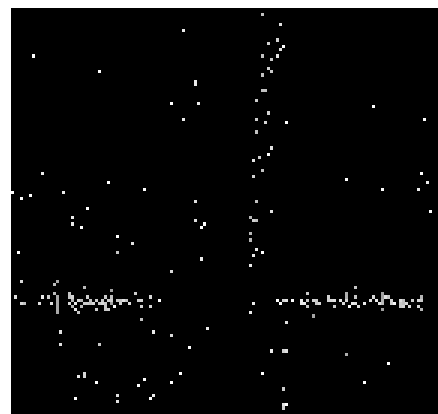
3.1 HEG Arm



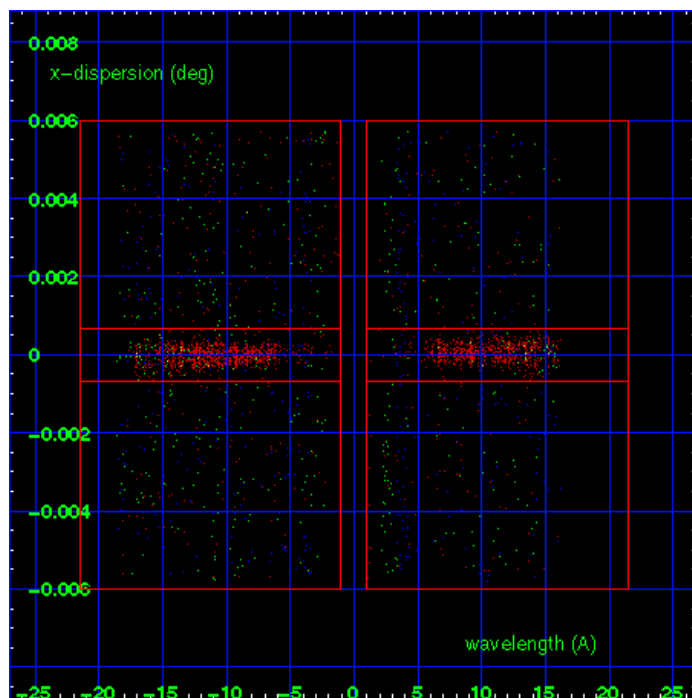
HEG Order Sort 123



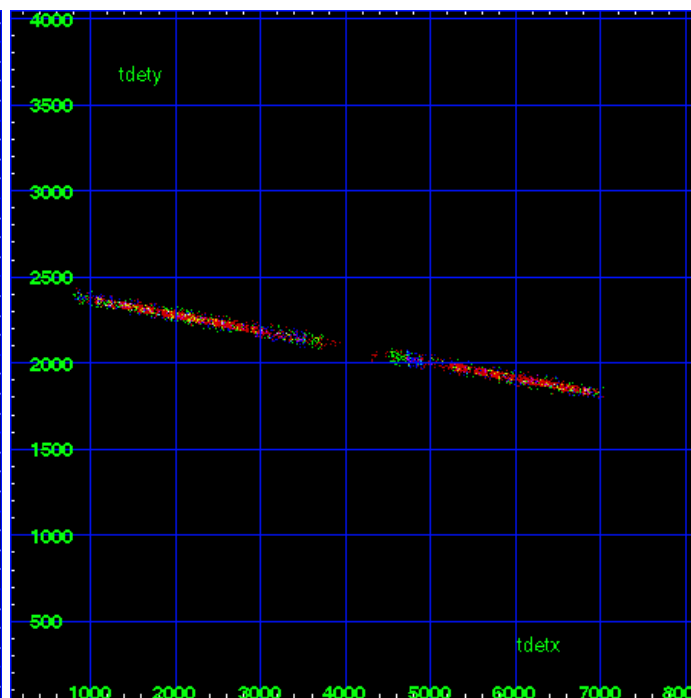
HEG Zero Order



HEG Order Sort ALL

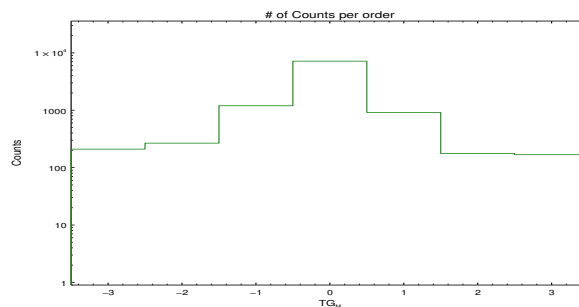


Spot Image HEG

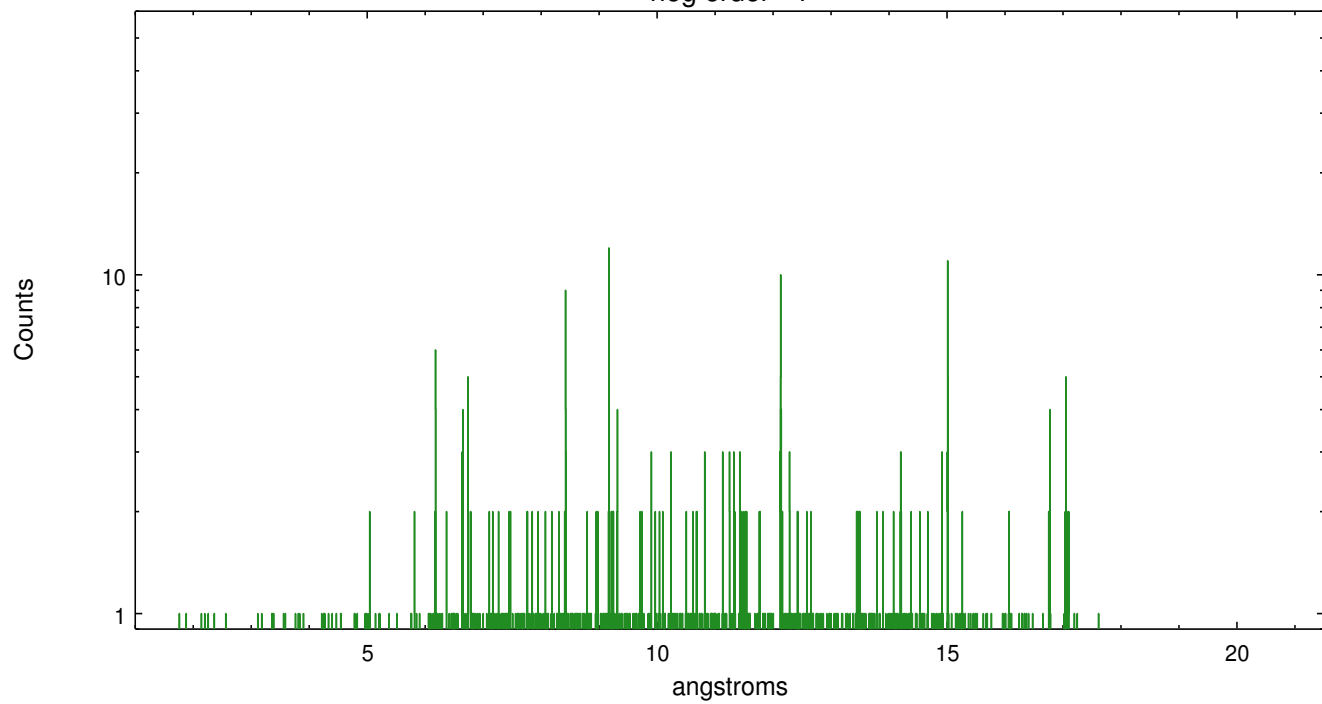


Full Detector HEG

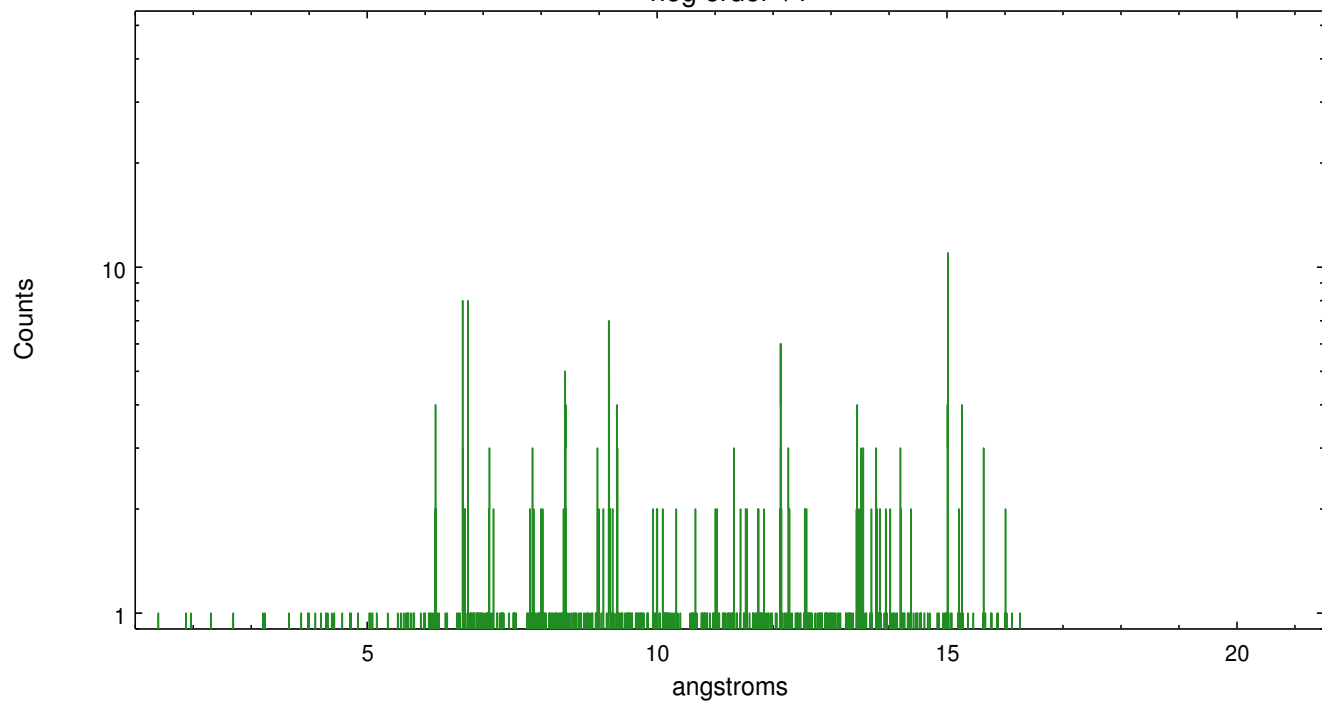
	order -3	order -2	order -1	order 0	order 1	order 2	order 3
Events	210	267	1197	7162	915	176	168



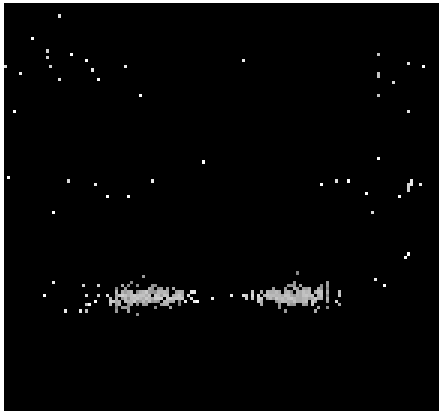
heg order -1



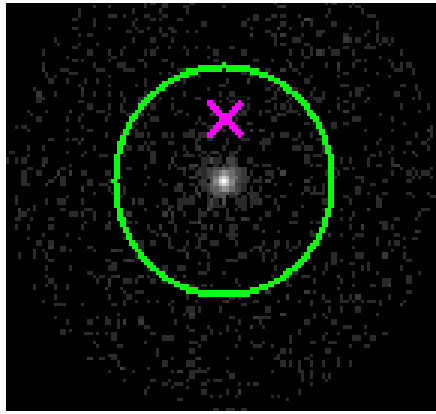
heg order +1



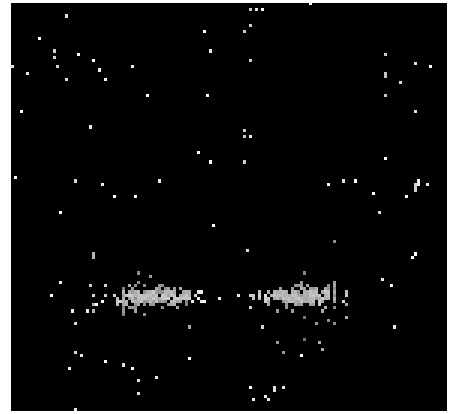
3.2 MEG Arm



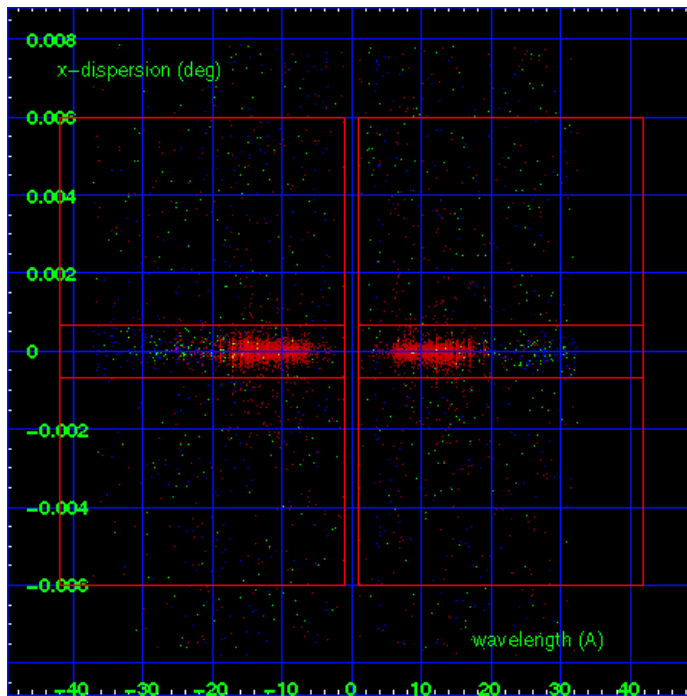
MEG Order Sort 123



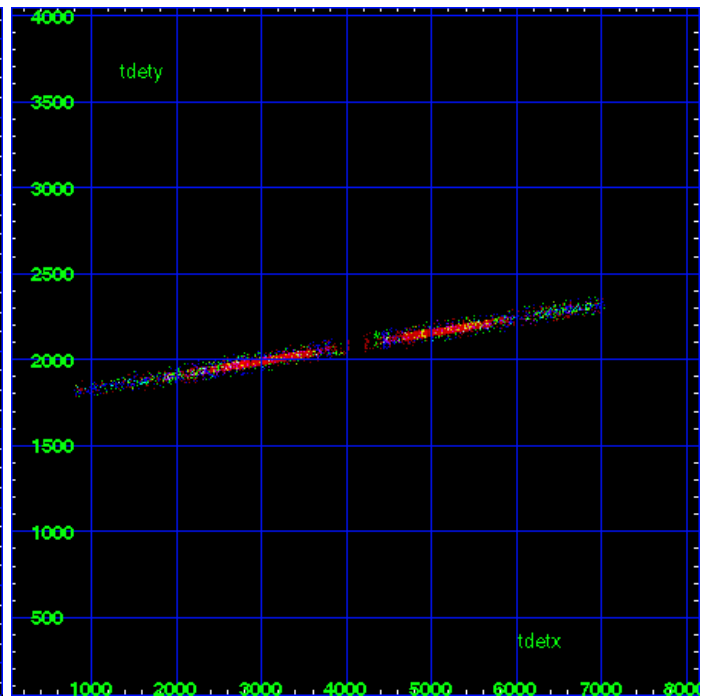
MEG Zero Order



MEG Order Sort ALL

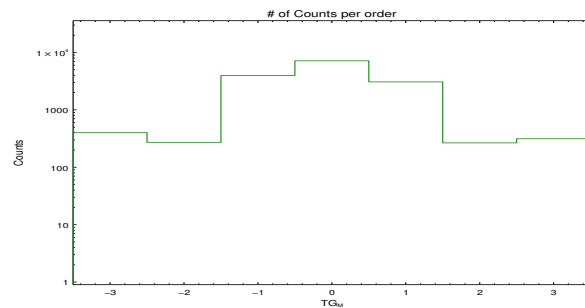


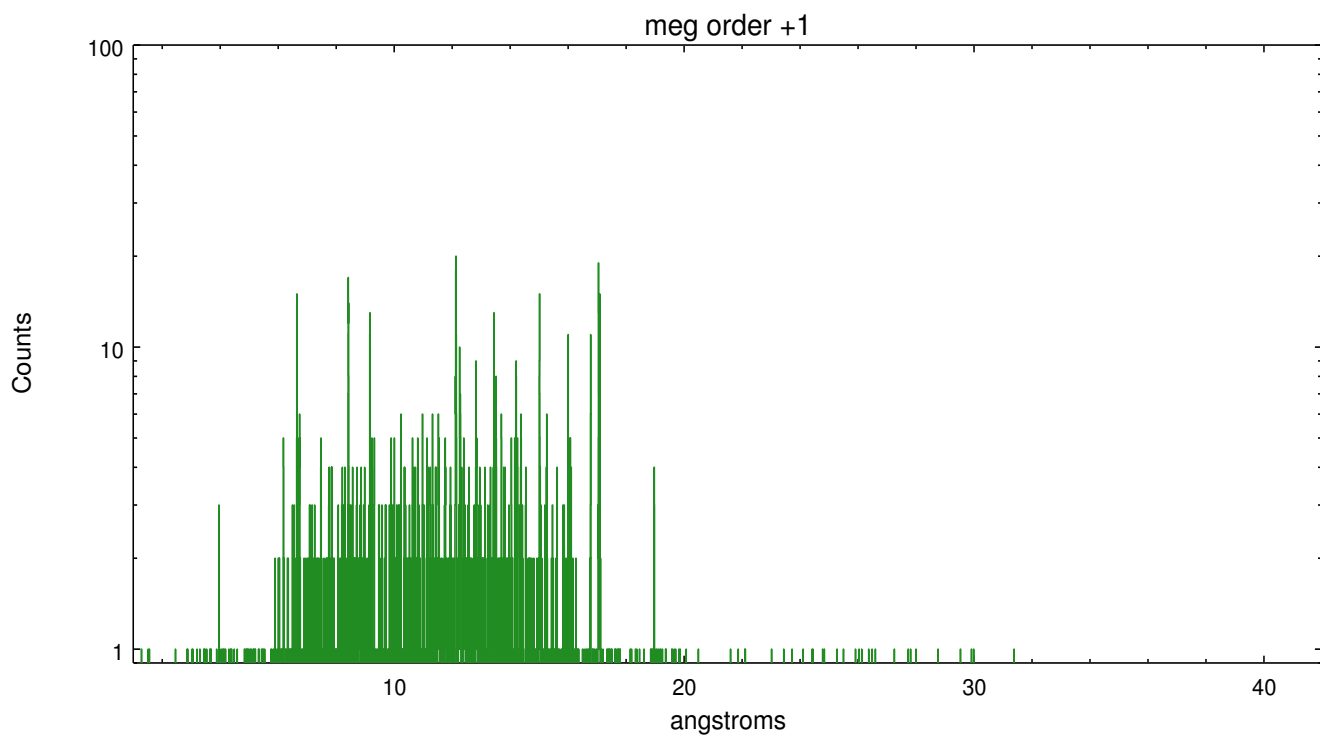
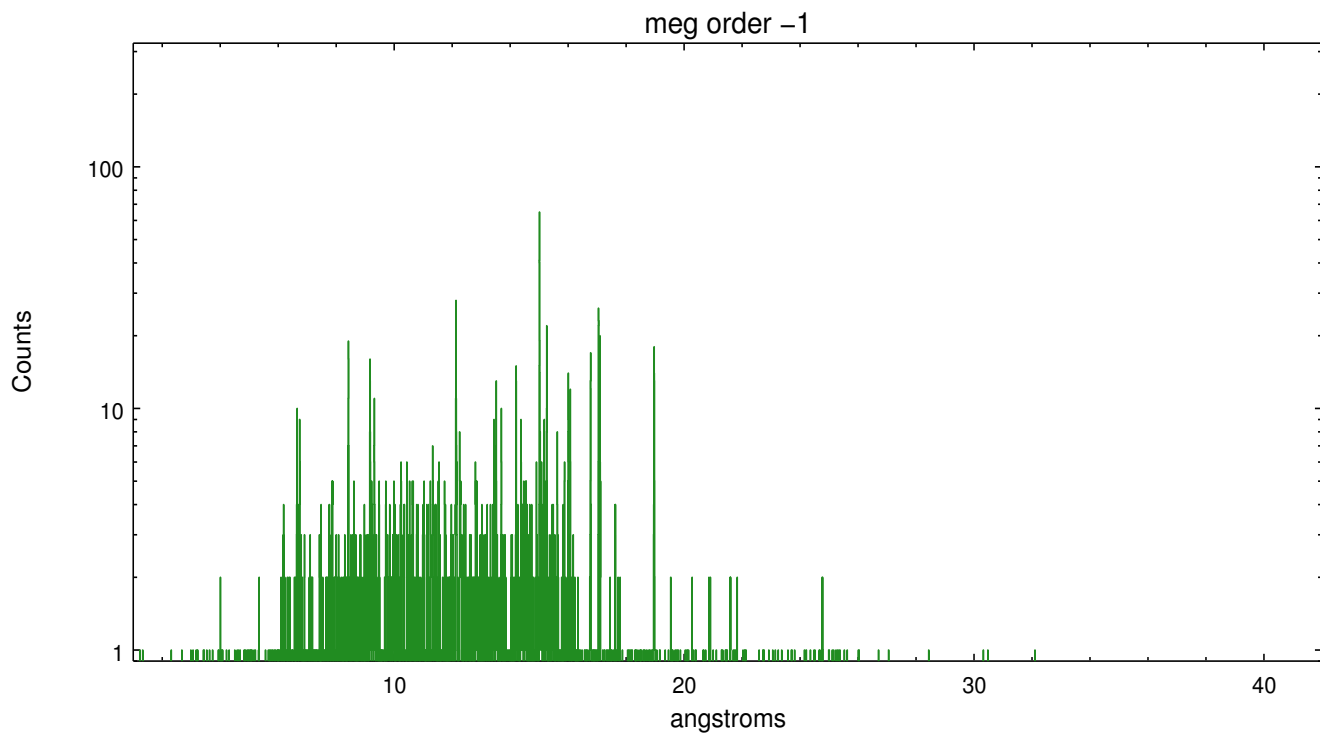
Spot Image MEG



Full Detector MEG

	order -3	order -2	order -1	order 0	order 1	order 2	order 3
Events	401	272	3955	7162	3072	266	314





A Summary

A.1 Status

V&V Scientist	Joy Nichols
V&V Date (YYYY-MM-DD)	2012.10.09
V&V Edition	1
V&V Disposition and Status	OK
V&V Charge Time	45.105

A.2 Comments