

V&V Reference Report

L2 ASCDS Version : 8.4.5

Observation 2804 - L2 Version 3
Chandra X-Ray Center

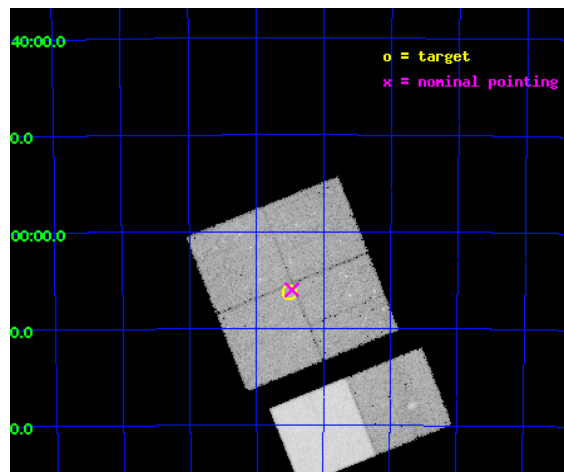
L2 Processing Date : Oct 17 2012

Contents

1	Front	2
2	OBI	3
2.1	OBI	3
2.1.1	Images	3
2.1.2	Bias	3
2.1.3	Parameters	4
2.1.4	Events	4
2.2	Compared Parameters	5
2.3	Aspect	6
2.4	Star Slots	9
2.4.1	Slot 3	9
2.4.2	Slot 4	10
2.4.3	Slot 5	11
2.4.4	Slot 6	12
2.4.5	Slot 7	13
2.5	FID Slots	14
2.5.1	Slot 0	14
2.5.2	Slot 1	15
2.5.3	Slot 2	16
A	Summary	17
A.1	Status	17
A.2	Comments	17

1 Front

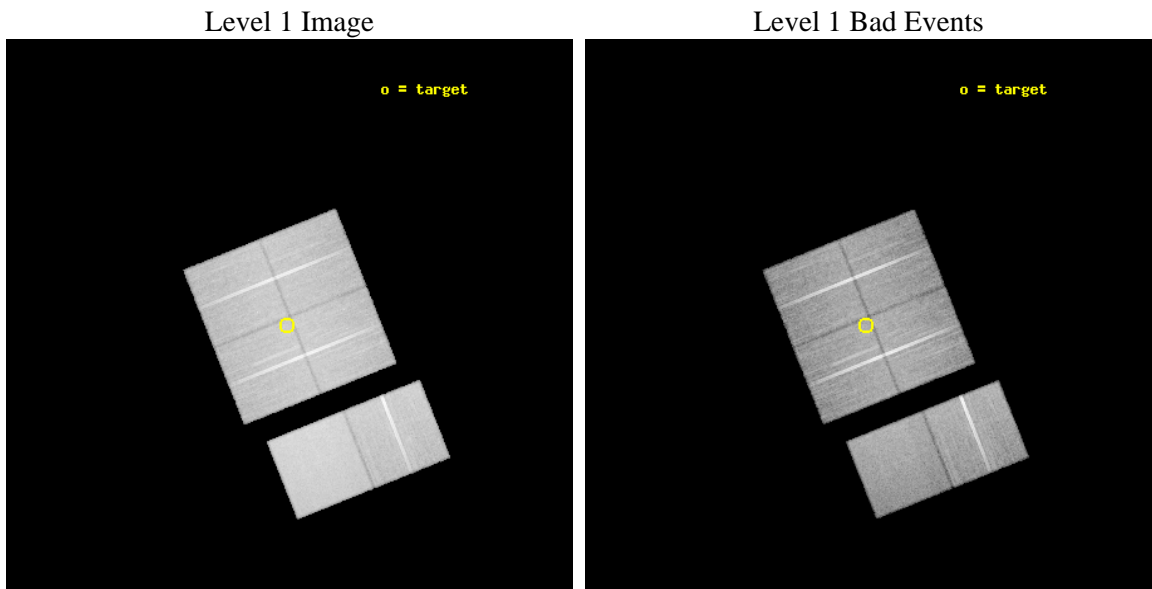
seq_num	500254	Sequence number
obs_id	2804	Observation id
title	A CHANDRA SURVEY FOR COMPACT OBJECTS IN SUPERNOVA REMNANTS	Proposa
observer	Prof. Shrinivas Kulkarni	Principal investigator
object	G309.8+0.0	Source name
dtycle	0	
cycle	P	events from which exps? Prim/Second/Both
ra_targ	207.625	Observer's specified target RA [deg]
dec_targ	-62.103611	Observer's specified target Dec [deg]
ra_nom	207.61797763934	Nominal RA [deg]
dec_nom	-62.100333738584	Nominal Dec [deg]
roll_nom	158.20870597498	Nominal Roll [deg]
revision	3	Processing version of data
ontime	39676.799852192	Sum of GTIs [s]
livetime	39174.388321963	Livetime [s]
ontime0	39667.07699132	Sum of GTIs [s]
ontime1	39676.799852192	Sum of GTIs [s]
ontime2	39676.799852192	Sum of GTIs [s]
ontime3	39676.799852192	Sum of GTIs [s]
ontime6	39676.799852192	Sum of GTIs [s]
ontime7	39676.799852192	Sum of GTIs [s]
l2events	279638	Number of level 2 events



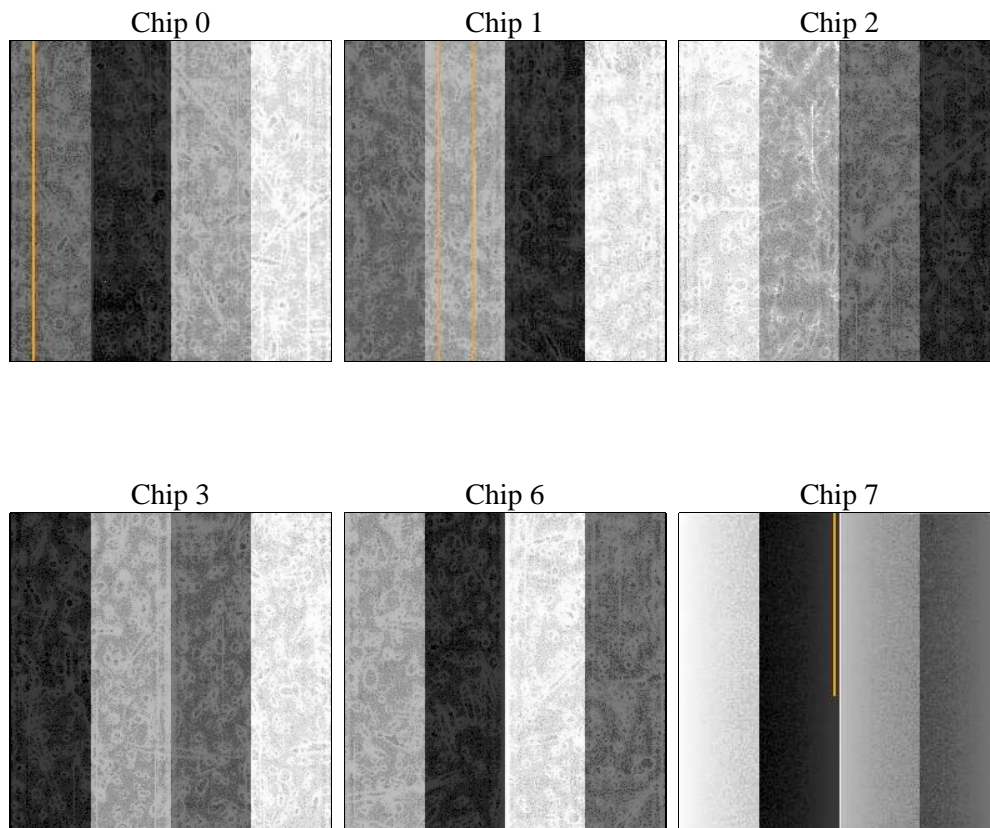
2 OBI

2.1 OBI

2.1.1 Images



2.1.2 Bias



2.1.3 Parameters

obi_num	1	Obi number	sched_exp_time	39500.000000	[s] Scheduled observation exposure time
ascdsver	8.4.5	Processing system revision	ontime	39676.799852192	Sum of GTIs [s]
caldbver	4.5.2	 	ontime0	39667.07699132	Sum of GTIs [s]
date	2012-10-17T13:21:36	Date and time of file creation	ontime1	39676.799852192	Sum of GTIs [s]
revision	3	Processing version of data	ontime2	39676.799852192	Sum of GTIs [s]
			ontime3	39676.799852192	Sum of GTIs [s]
			ontime6	39676.799852192	Sum of GTIs [s]
			ontime7	39676.799852192	Sum of GTIs [s]
			l1events	1564202	Number of level 1 events

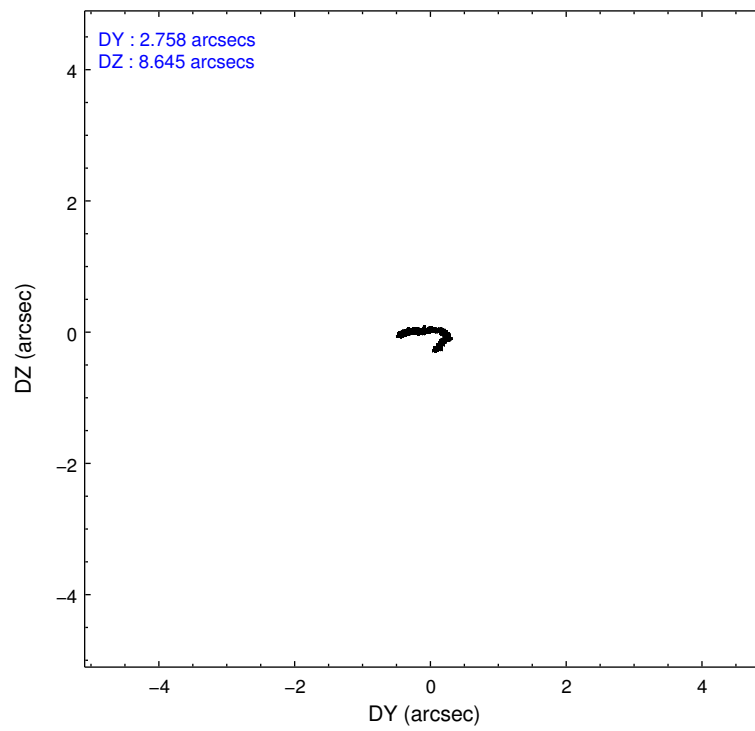
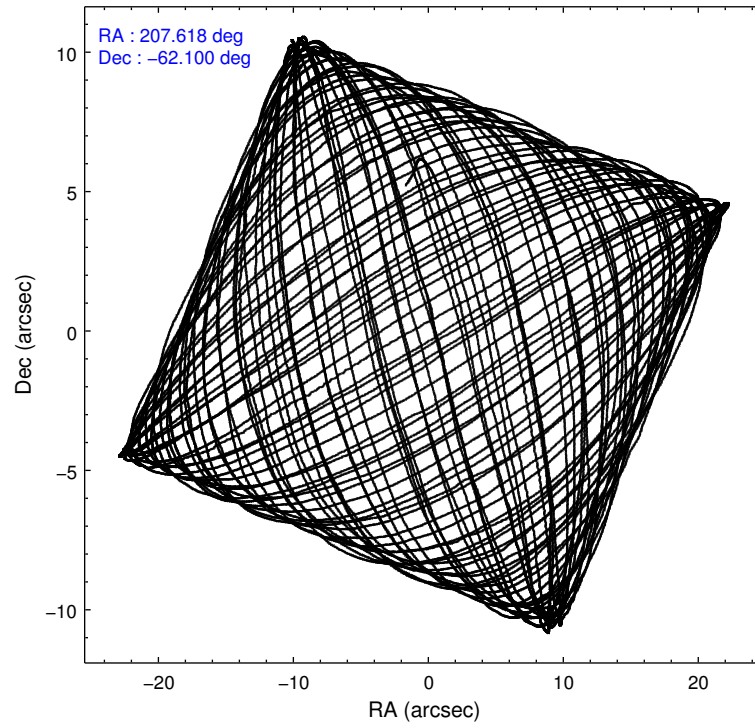
2.1.4 Events

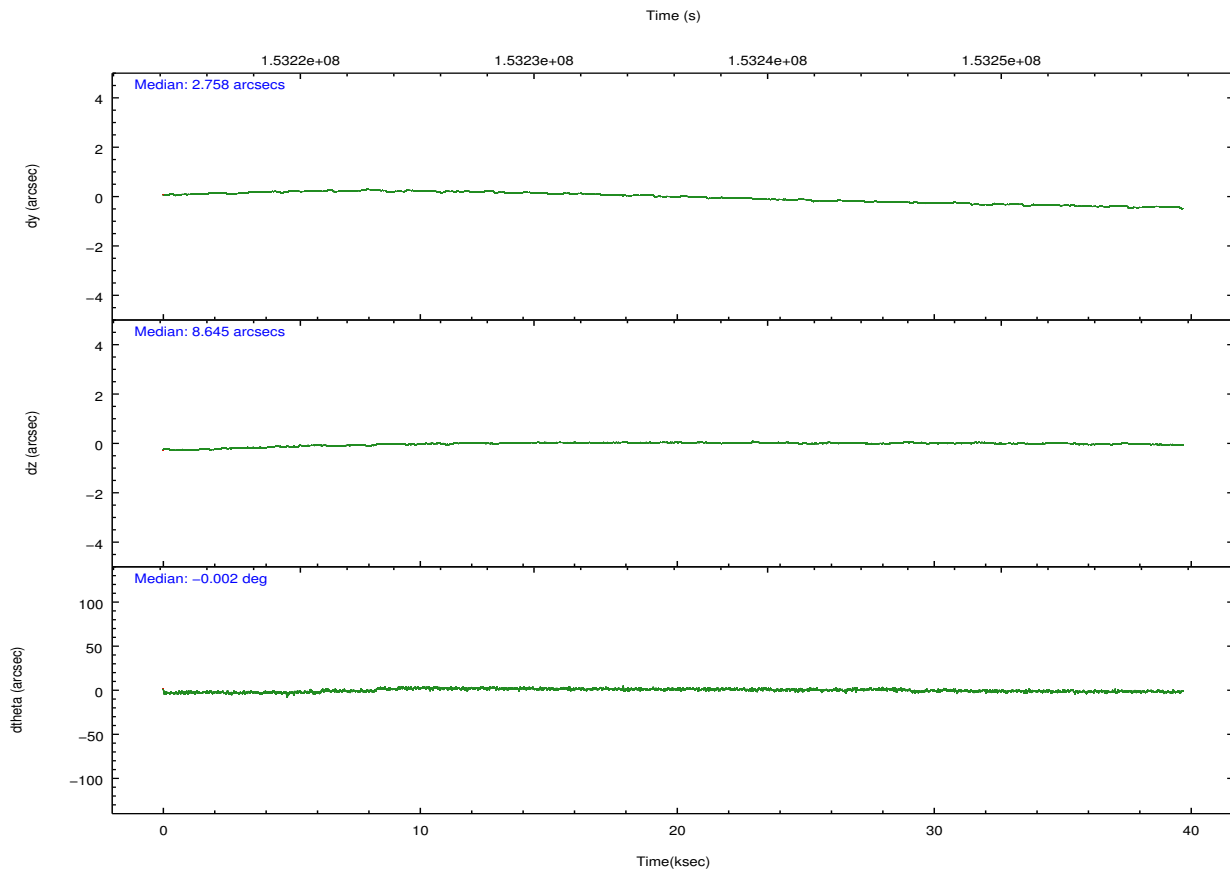
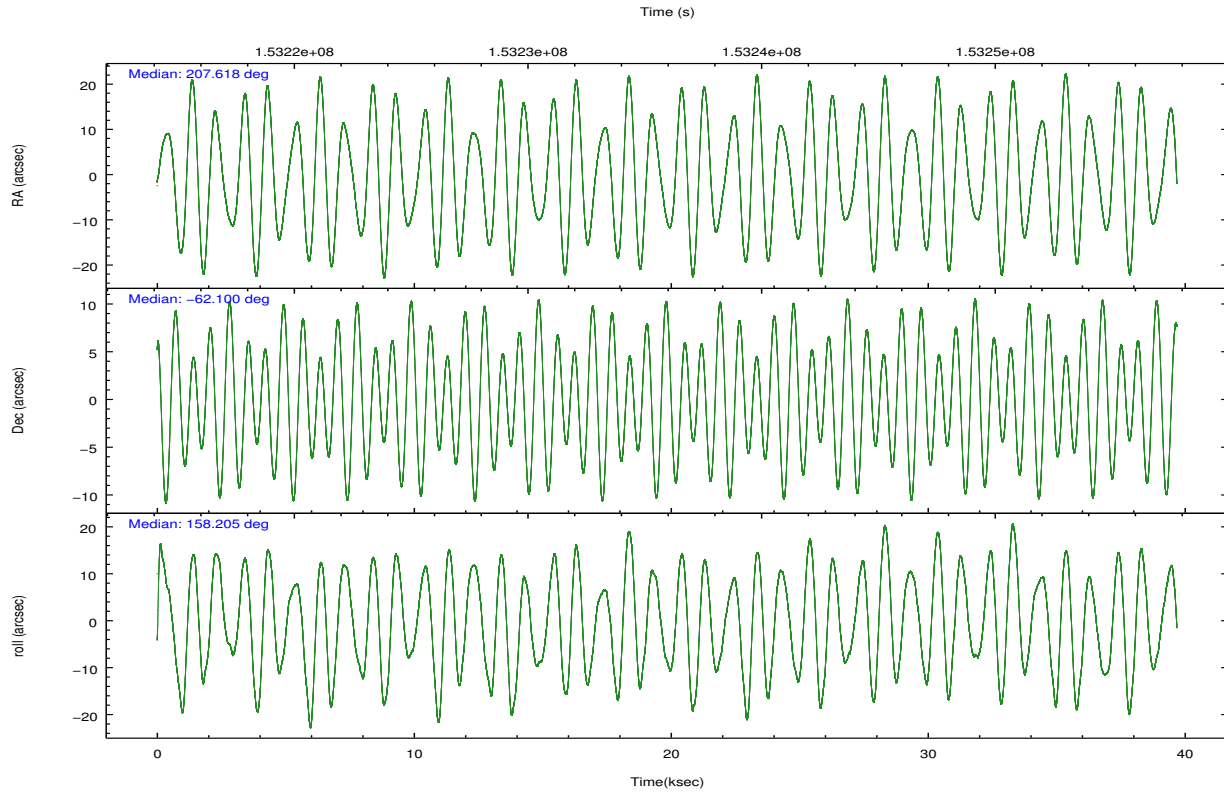
	ccd 0	ccd 1	ccd 2	ccd 3	ccd 6	ccd 7		ccd 0	ccd 1	ccd 2	ccd 3	ccd 6	ccd 7
level 1 events	228960	231675	256399	249403	265342	332423	grade 0 events	14987	15294	16506	15842	13926	13468
rejected events	196425	197062	222936	216801	232968	192913		6%	6%	6%	6%	5%	4%
rejected %	85%	85%	86%	86%	87%	58%	grade 1 events	146	129	159	160	127	288
								0%	0%	0%	0%	0%	0%
							grade 2 events	6443	7109	6271	5862	6368	27622
								2%	3%	2%	2%	2%	8%
							grade 3 events	3094	3162	2896	2972	3024	12645
								1%	1%	1%	1%	1%	3%
							grade 4 events	2782	3087	2928	2976	2977	12733
								1%	1%	1%	1%	1%	3%
							grade 5 events	9500	9939	9180	10555	11361	31703
								4%	4%	3%	4%	4%	9%
							grade 6 events	5358	6100	4993	5083	6208	73592
								2%	2%	1%	2%	2%	22%
							grade 7 events	186650	186855	213466	205953	221351	160372
								81%	80%	83%	82%	83%	48%

2.2 Compared Parameters

Parameter	Planned	Actual	Parameter	Planned	Actual
Instrument	ACIS	ACIS	Obspar format version number	7	7
Detector	ACIS-012367	ACIS-012367	Obspar file type	PREDICTED	ACTUAL
Grating	NONE	NONE	Obspar update status	NONE	UPDATED
Data mode	FAINT	FAINT	Number of optional ACIS chips dropped	0	0
Observation mode	POINTING	POINTING	On-chip summing requested	N	N
[deg] Pointing RA	207.675850	207.6179776393439	Subarray requested	NONE	NONE
[deg] Pointing Dec	-62.096325	-62.1003337385841	Alternating exposures requested	N	N
[deg] Pointing Roll	158.051176	158.2087059749819	[s] Primary exposure time	0.000000	3.2
[mm] SIM focus pos	-0.782348	-0.7809083437167272			
[mm] SIM defocus	0	0.001439871863259334			
[mm] SIM translation stage pos	-233.592463	-233.5874344608287			
[mm] SIM translation stage offset	0	-0.005018542100998502			
[s] Observation start time (MET)	153216290.184000	153215135.50253			
Observation start date	2002-11-09T08:03:46	2002-11-09T07:45:35			
[s] Observation end time (MET)	153255790.184000	153256475.29175			
Observation end date	2002-11-09T19:02:06	2002-11-09T19:14:35			
Read mode	TIMED	TIMED			

2.3 Aspect



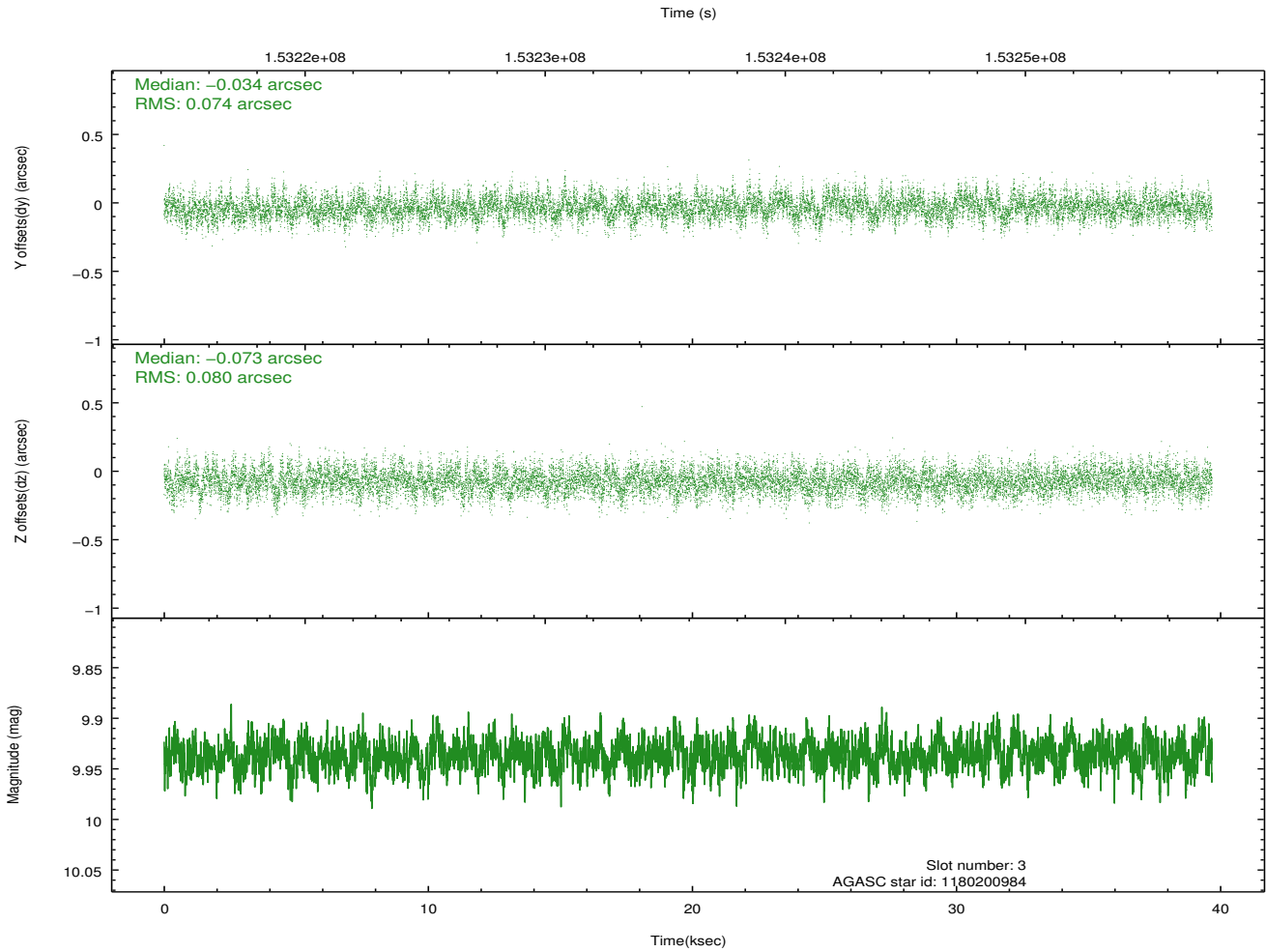
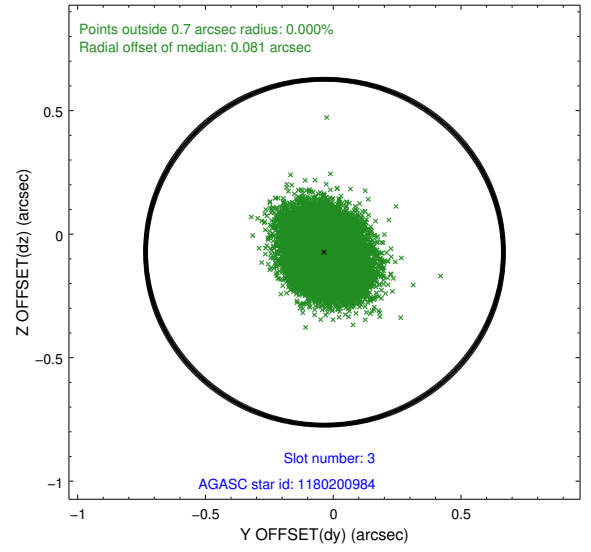
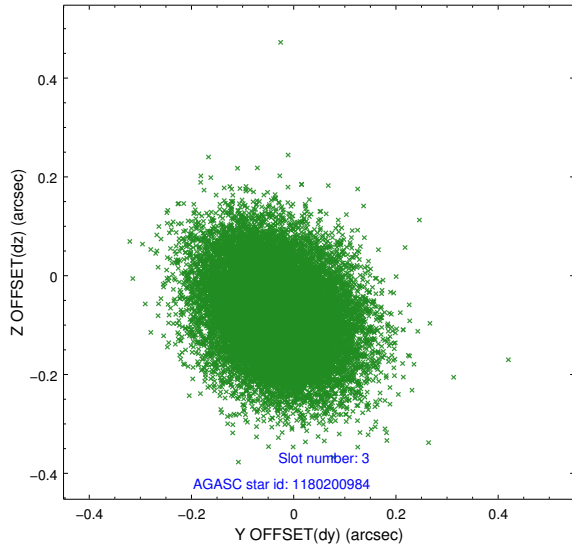


Slot Statistics

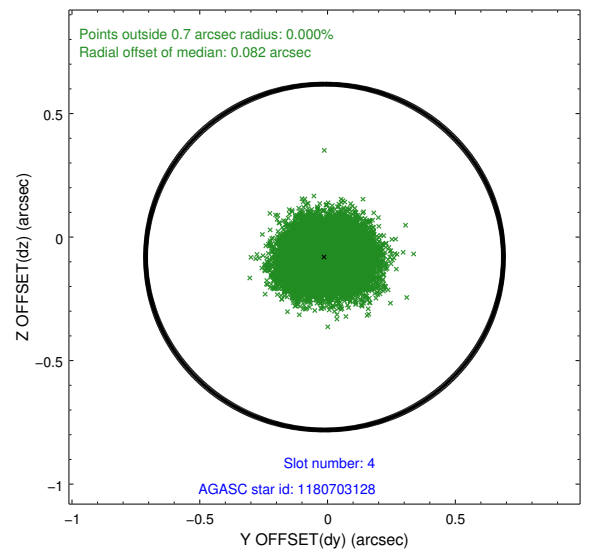
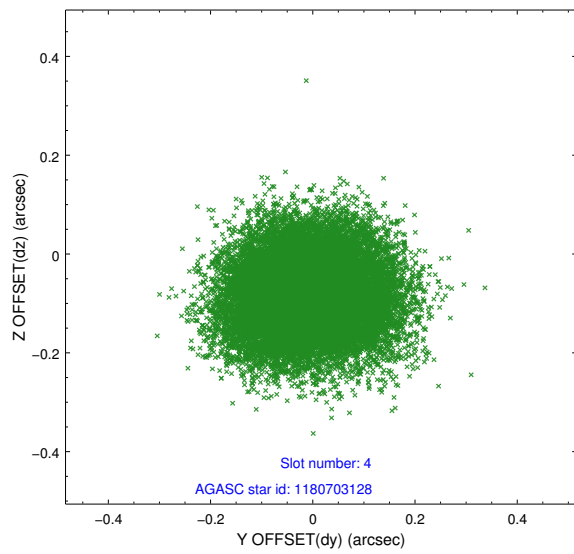
slot	status	id	mag	n_pts	med_dy	med_dz	dr1	dr2	ra	dec	mean_y	mean_z
0	FID	ACIS-I-1	7.24	9679	-0.099	0.077	0.014	0.029	0.000000	0.000000	936.99	-831.97
1	FID	ACIS-I-2	7.16	9679	-0.042	-0.052	0.014	0.028	0.000000	0.000000	-757.03	-838.56
2	FID	ACIS-I-4	7.19	9679	0.042	0.041	0.011	0.044	0.000000	0.000000	2157.00	1067.80
3	GUIDE	1180200984	9.94	19345	-0.034	-0.073	0.115	0.190	208.201209	-61.640684	-221.67	-1853.21
4	GUIDE	1180703128	9.64	19340	-0.012	-0.081	0.114	0.183	206.377509	-62.050312	2085.17	686.19
5	GUIDE	1180711952	8.06	19355	-0.012	-0.037	0.074	0.125	208.267354	-62.888019	-1967.49	2285.55
6	GUIDE	1180724504	9.31	19348	0.101	0.098	0.095	0.154	205.862671	-62.438910	2323.84	2313.06
7	GUIDE	1180206152	10.25	18847	-0.041	0.091	0.193	0.329	207.069069	-61.392677	1915.25	-1953.17

2.4 Star Slots

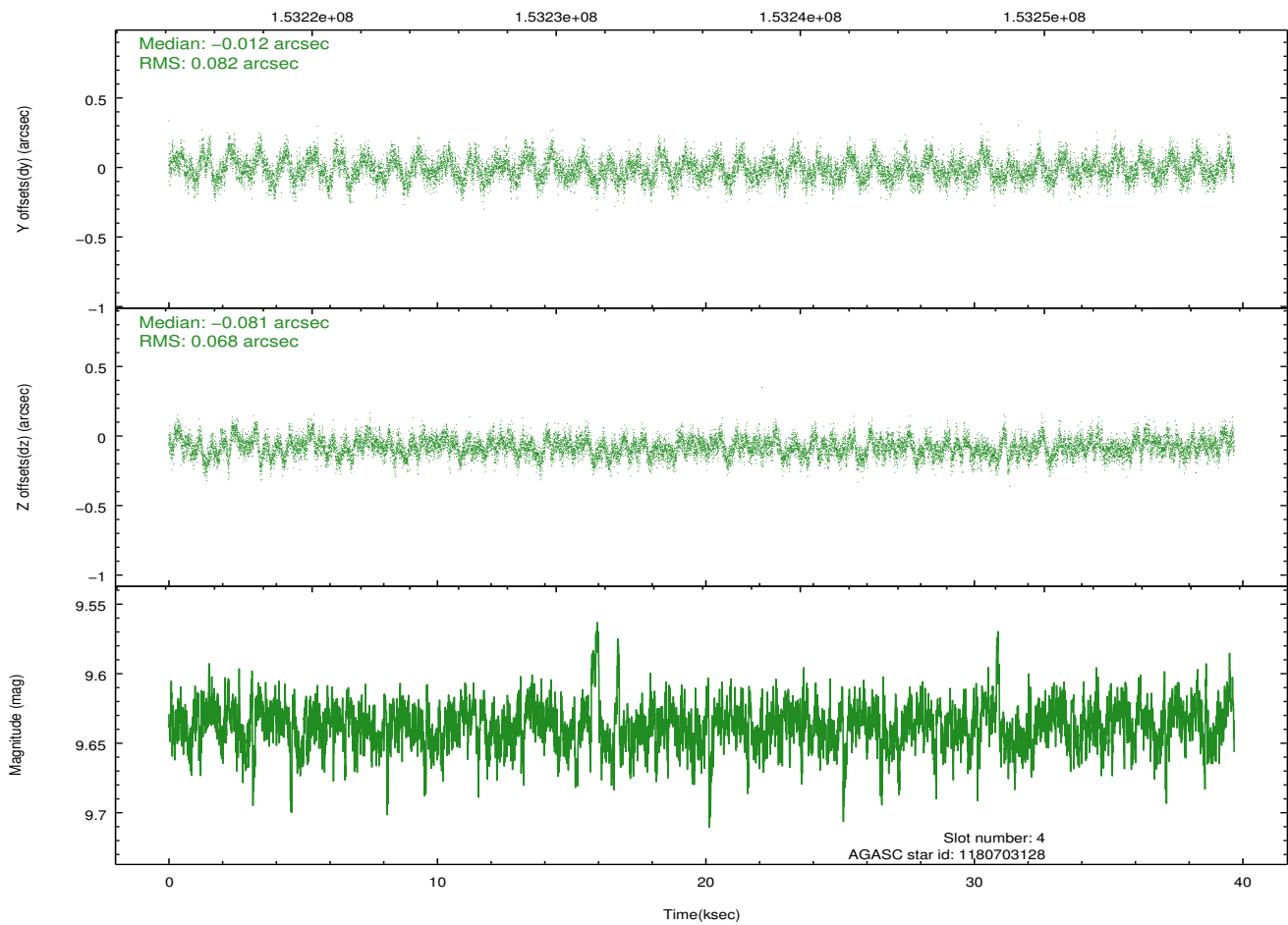
2.4.1 Slot 3



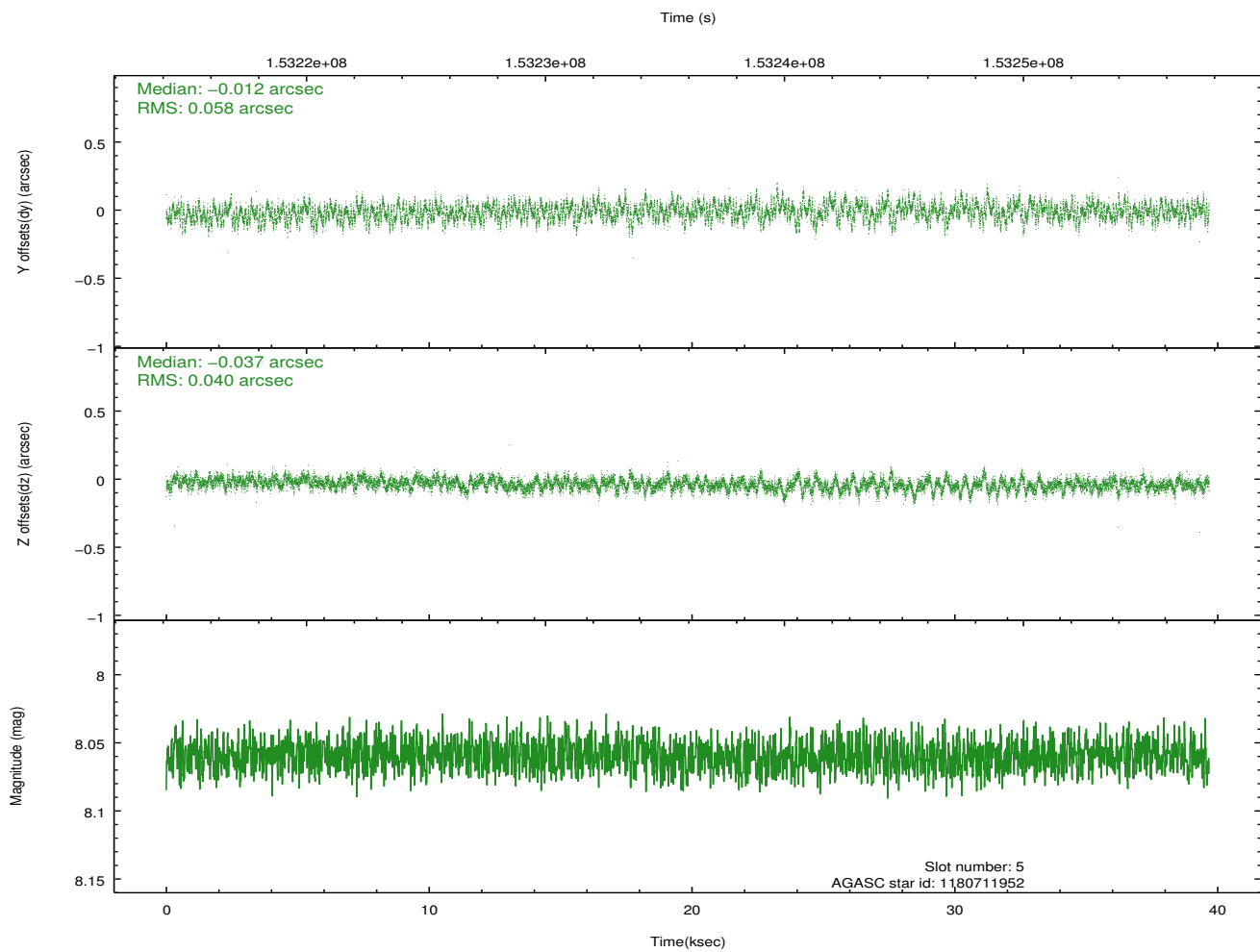
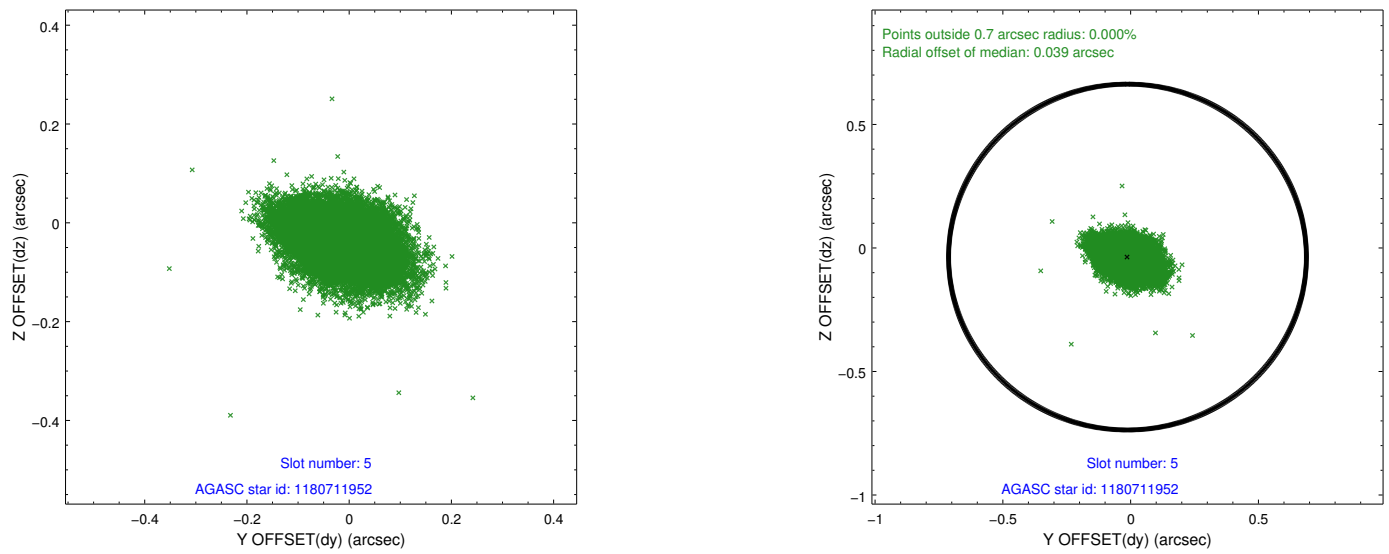
2.4.2 Slot 4



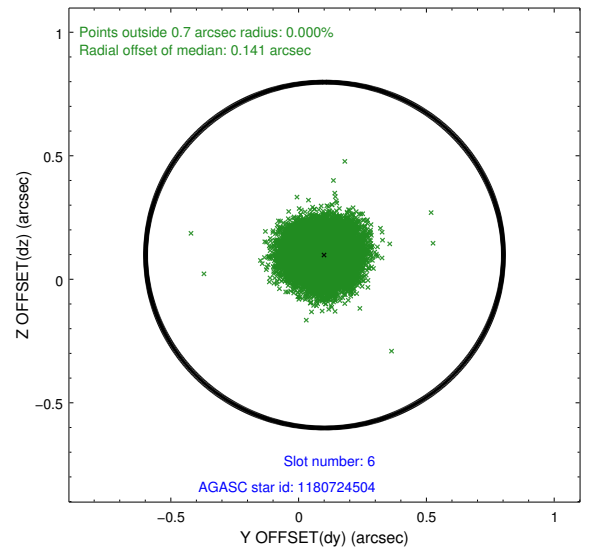
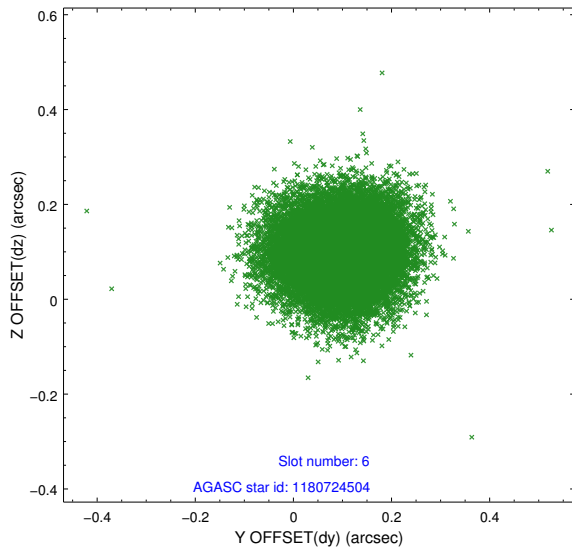
Time (s)



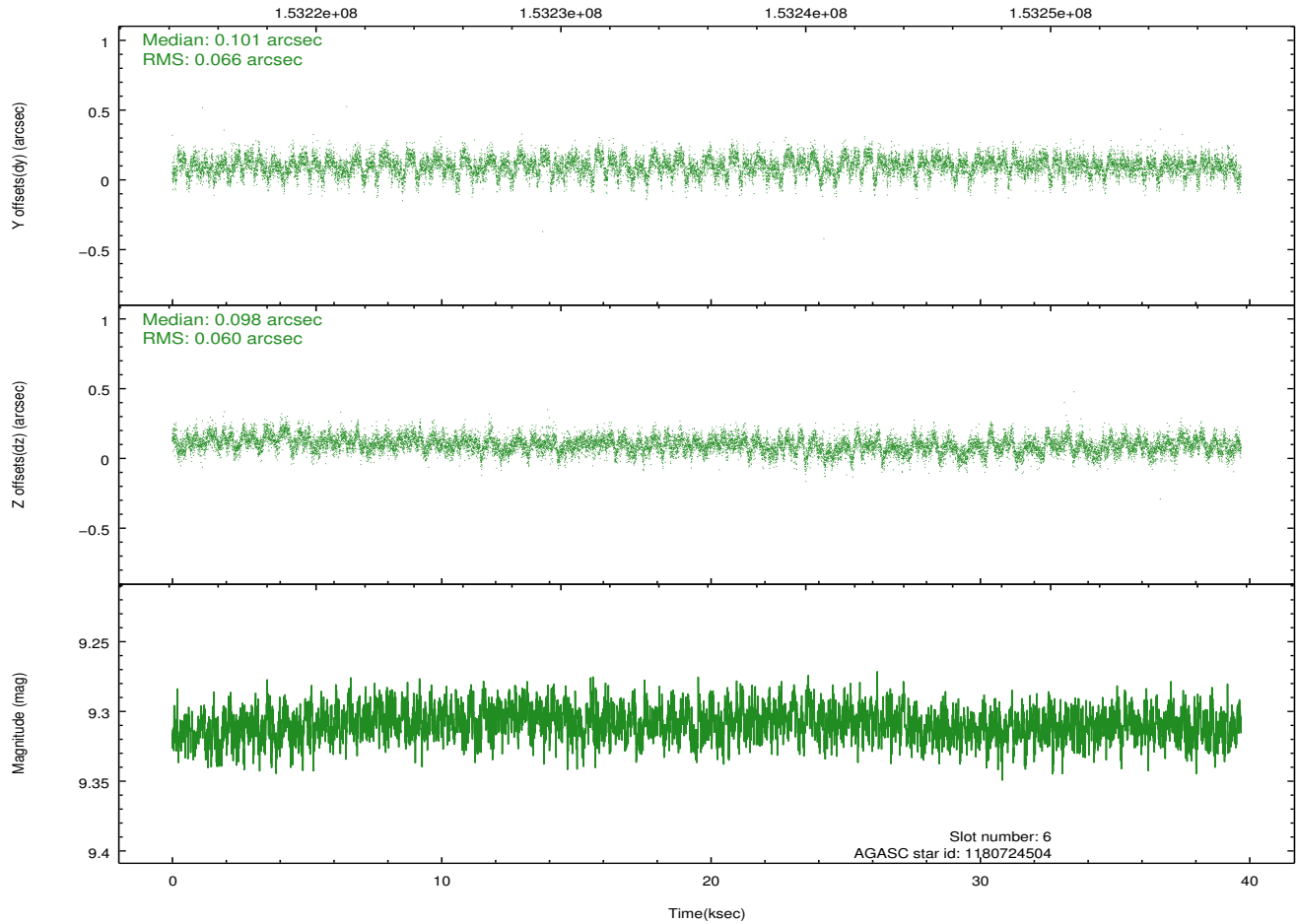
2.4.3 Slot 5



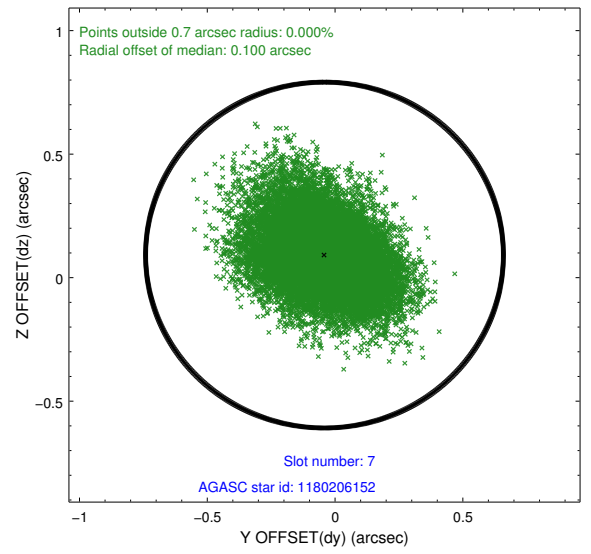
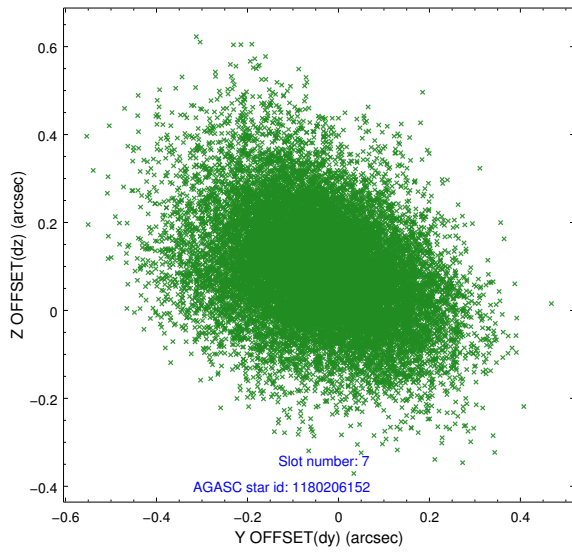
2.4.4 Slot 6



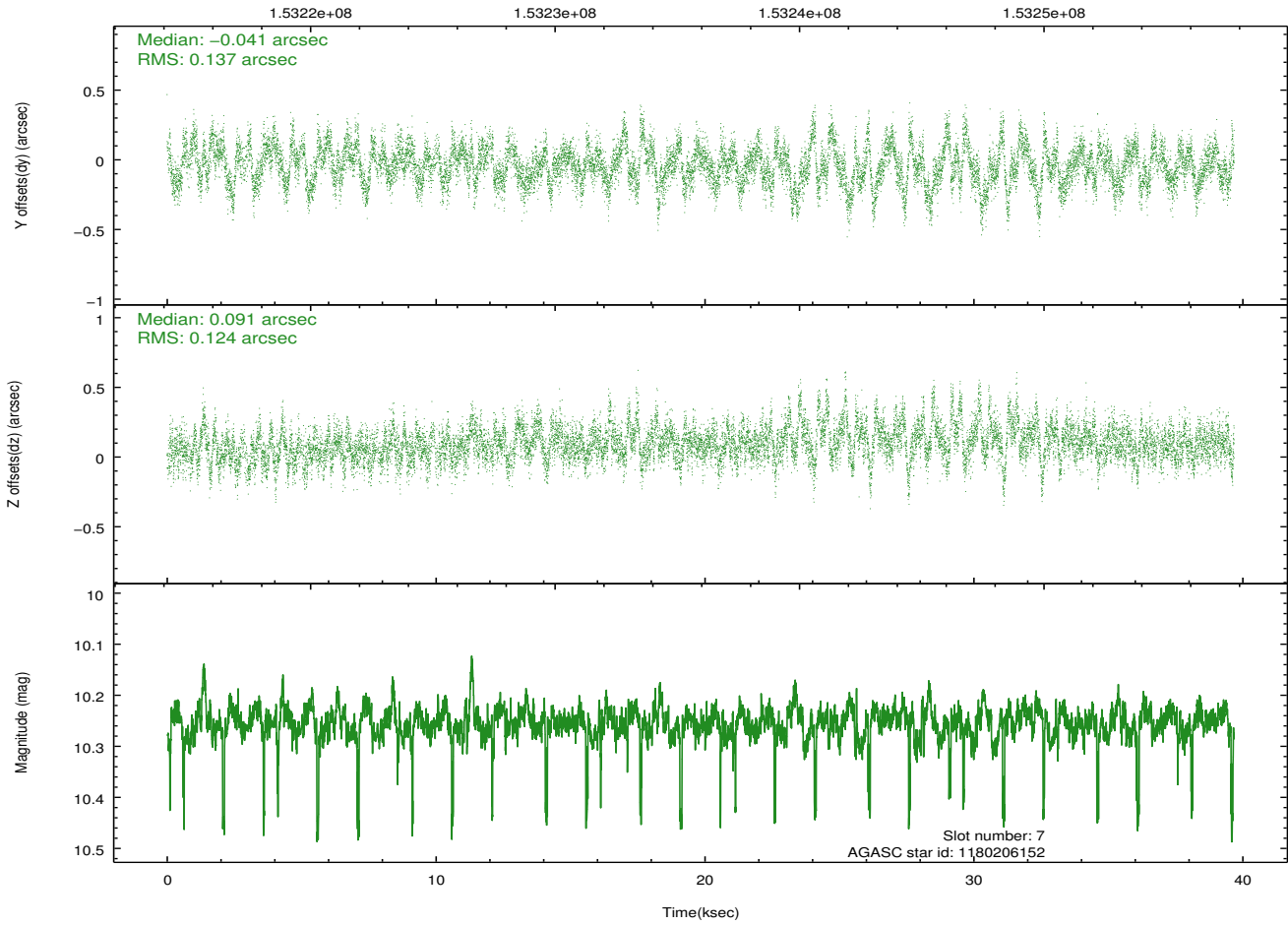
Time (s)



2.4.5 Slot 7

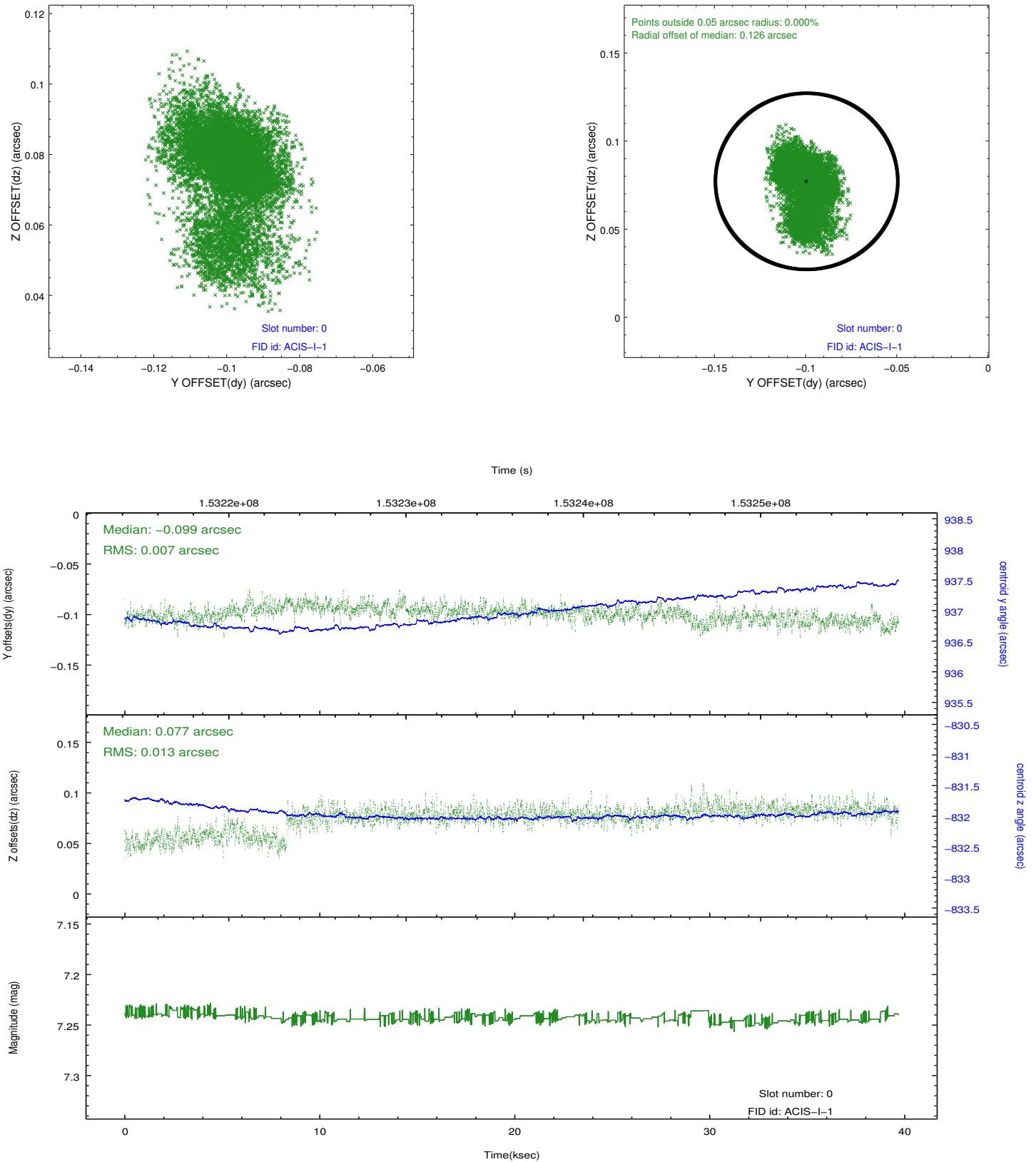


Time (s)

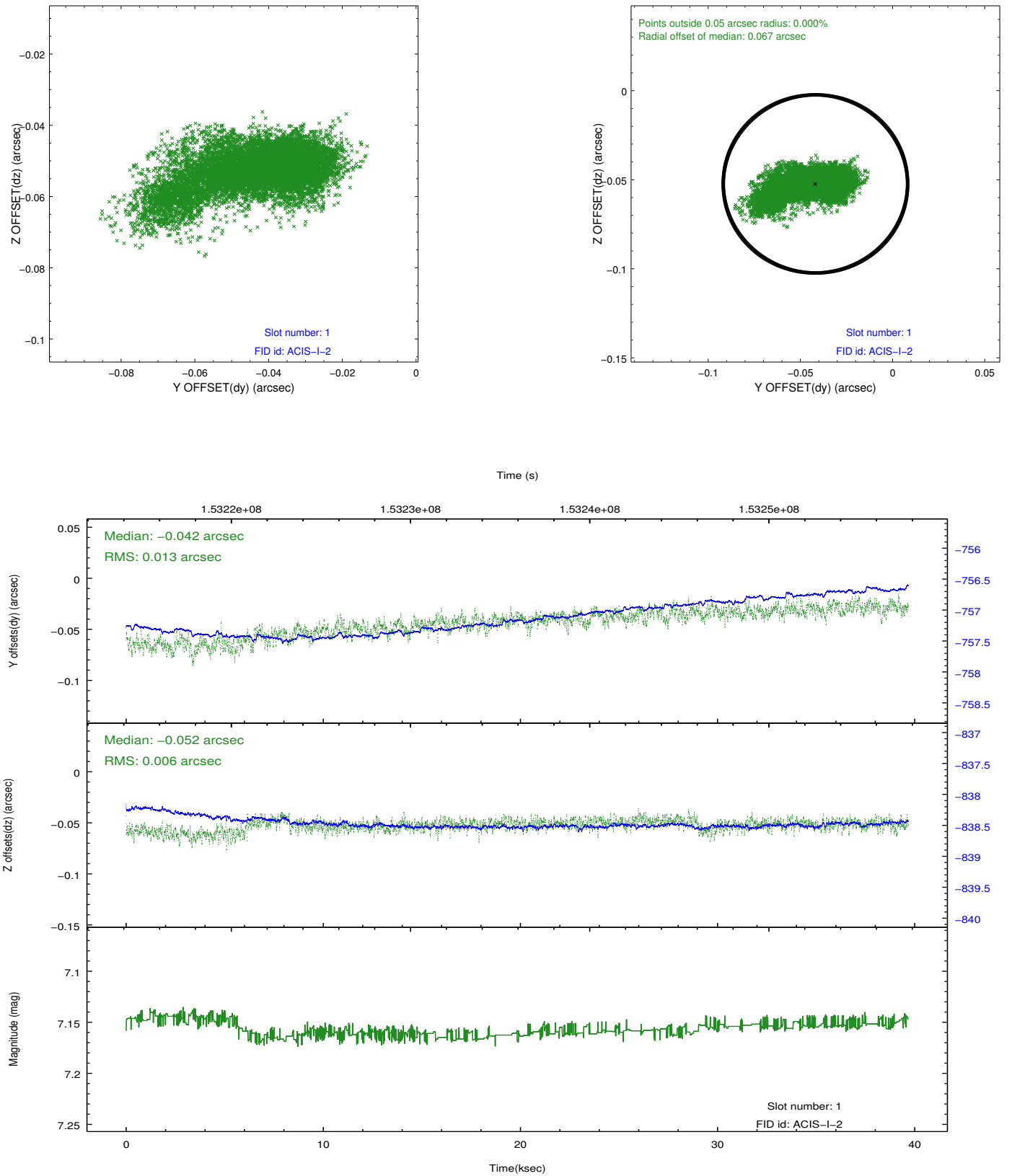


2.5 FID Slots

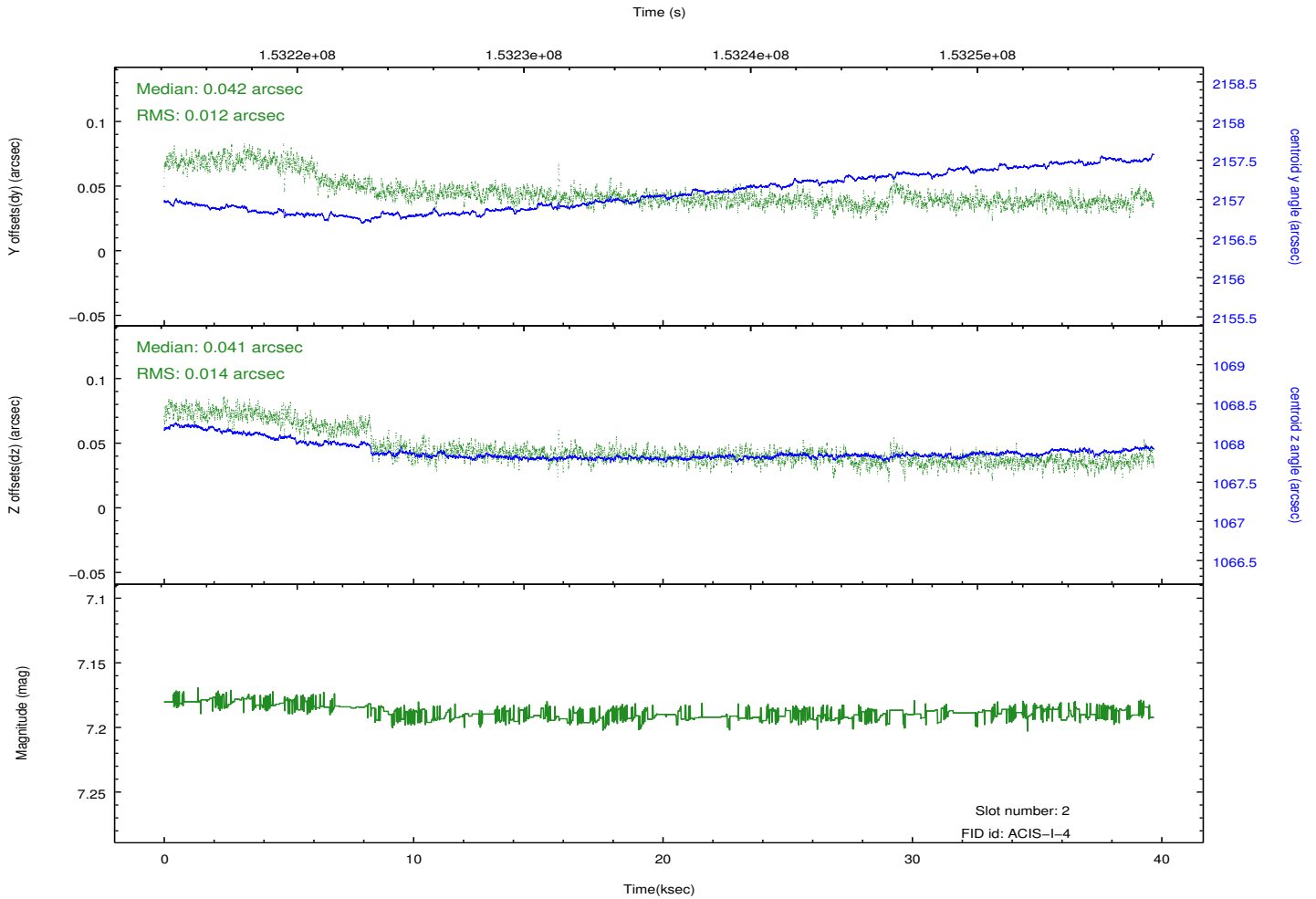
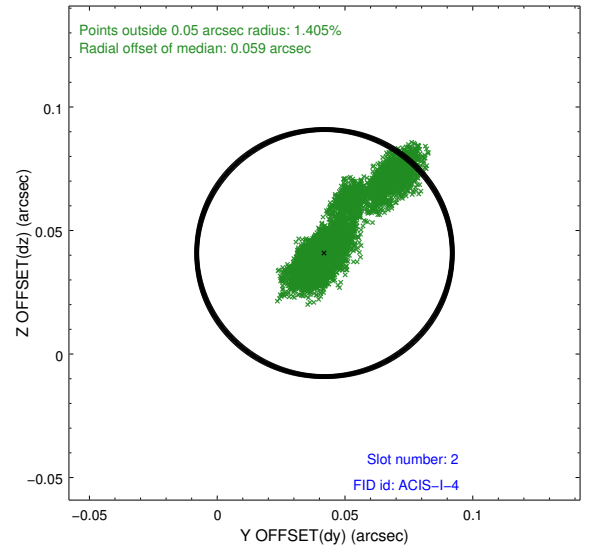
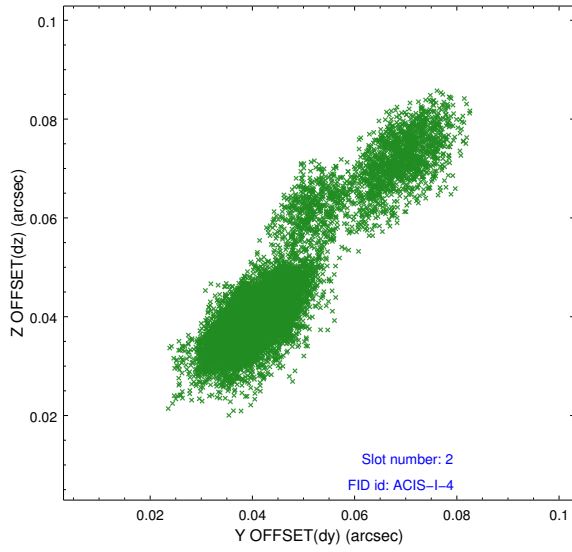
2.5.1 Slot 0



2.5.2 Slot 1



2.5.3 Slot 2



A Summary

A.1 Status

V&V Scientist	Jen Lauer
V&V Date (YYYY-MM-DD)	2012.10.26
V&V Edition	1
V&V Disposition and Status	OK
V&V Charge Time	39.676

A.2 Comments