

V&V Reference Report

L2 ASCDS Version : 8.4.5

Observation 2824 - L2 Version 3
Chandra X-Ray Center

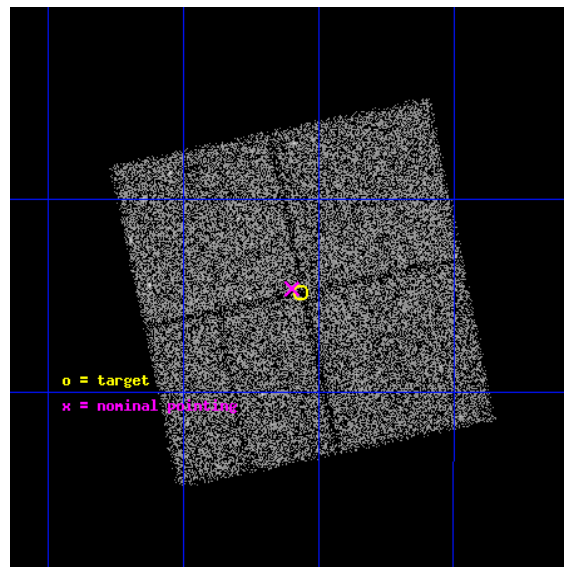
L2 Processing Date : Oct 9 2012

Contents

1	Front	2
2	OBI	3
2.1	OBI	3
2.1.1	Images	3
2.1.2	Bias	3
2.1.3	Parameters	4
2.1.4	Events	4
2.2	Compared Parameters	5
2.3	Aspect	6
2.4	Star Slots	9
2.4.1	Slot 3	9
2.4.2	Slot 4	10
2.4.3	Slot 5	11
2.4.4	Slot 6	12
2.4.5	Slot 7	13
2.5	FID Slots	14
2.5.1	Slot 0	14
2.5.2	Slot 1	15
2.5.3	Slot 2	16
A	Summary	17
A.1	Status	17
A.2	Comments	17

1 Front

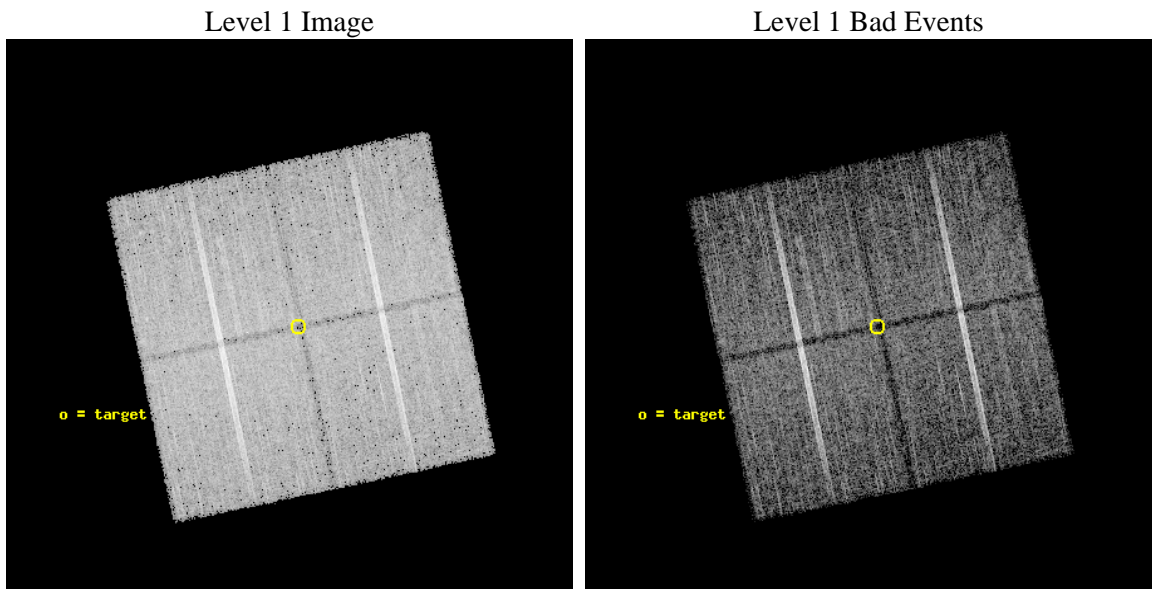
seq_num	500274	Sequence number
obs_id	2824	Observation id
title	LOCALIZATION OF OPTICALLY-DARK GAMMA-RAY BURSTS BY CHANDRA AND HST	
observer	Dr. george Ricker	Principal investigator
object	GRB020531	Source name
dtcycle	0	
cycle	P	events from which exps? Prim/Second/Both
ra_targ	228.767083	Observer's specified target RA [deg]
dec_targ	-19.413472	Observer's specified target Dec [deg]
ra_nom	228.77472116627	Nominal RA [deg]
dec_nom	-19.410906285197	Nominal Dec [deg]
roll_nom	258.10273997326	Nominal Roll [deg]
revision	3	Processing version of data
ontime	20078.290358961	Sum of GTIs [s]
livetime	19815.952713998	Livetime [s]
ontime0	20087.713259637	Sum of GTIs [s]
ontime1	20090.854199946	Sum of GTIs [s]
ontime2	20075.149378836	Sum of GTIs [s]
ontime3	20078.290358961	Sum of GTIs [s]
l2events	53861	Number of level 2 events



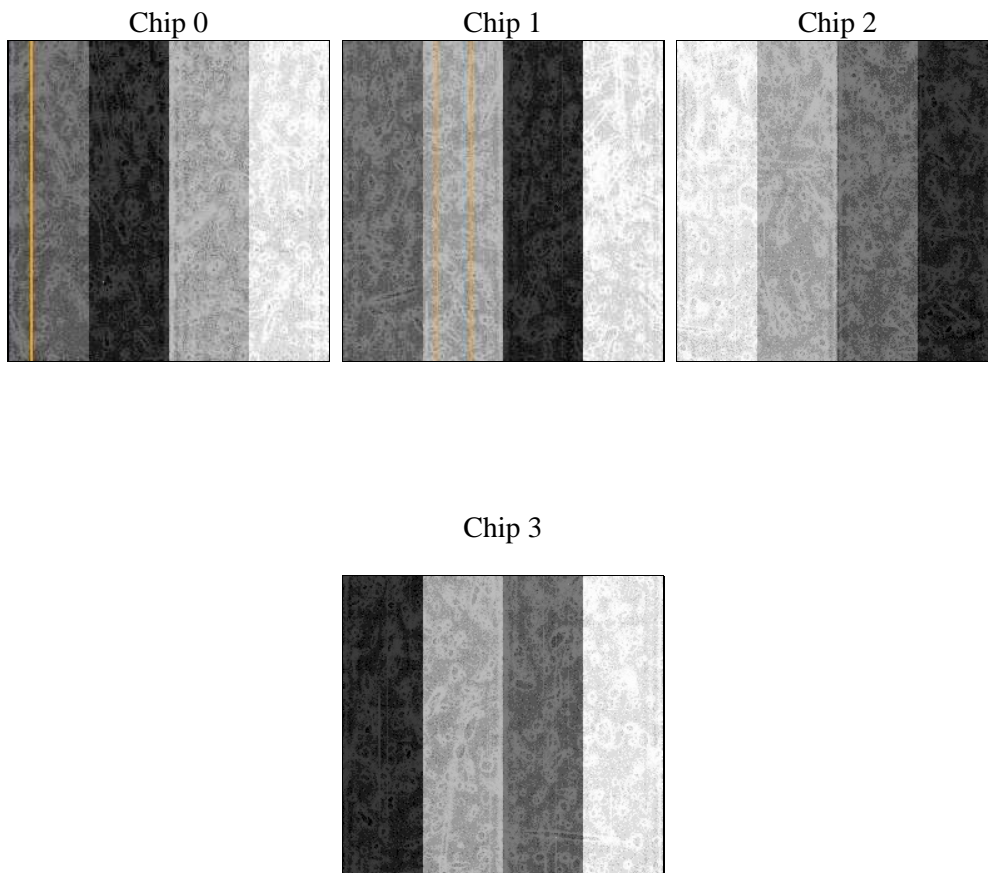
2 OBI

2.1 OBI

2.1.1 Images



2.1.2 Bias



2.1.3 Parameters

obi_num	0	Obi number	sched_exp_time	20000.000000	[s] Scheduled observation exposure time
ascdsver	8.4.5	Processing system revision	ontime	20078.290358961	Sum of GTIs [s]
caldbver	4.5.2	 	ontime0	20087.713259637	Sum of GTIs [s]
date	2012-10-09T02:20:09	Date and time of file creation	ontime1	20090.854199946	Sum of GTIs [s]
revision	3	Processing version of data	ontime2	20075.149378836	Sum of GTIs [s]
			ontime3	20078.290358961	Sum of GTIs [s]
			l1events	538692	Number of level 1 events

2.1.4 Events

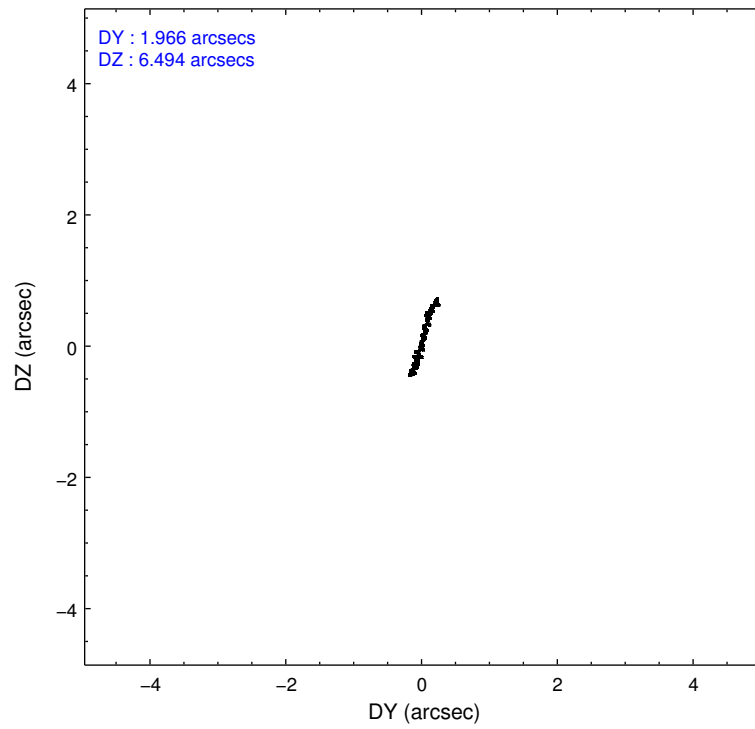
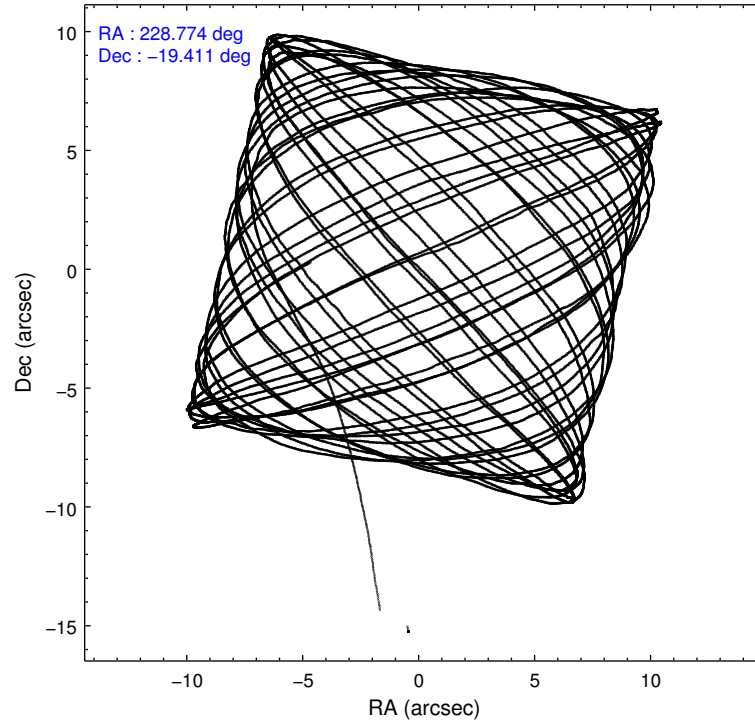
	ccd 0	ccd 1	ccd 2	ccd 3
level 1 events	128069	130276	139272	141075
rejected events	112420	113729	123775	125724
rejected %	87%	87%	88%	89%

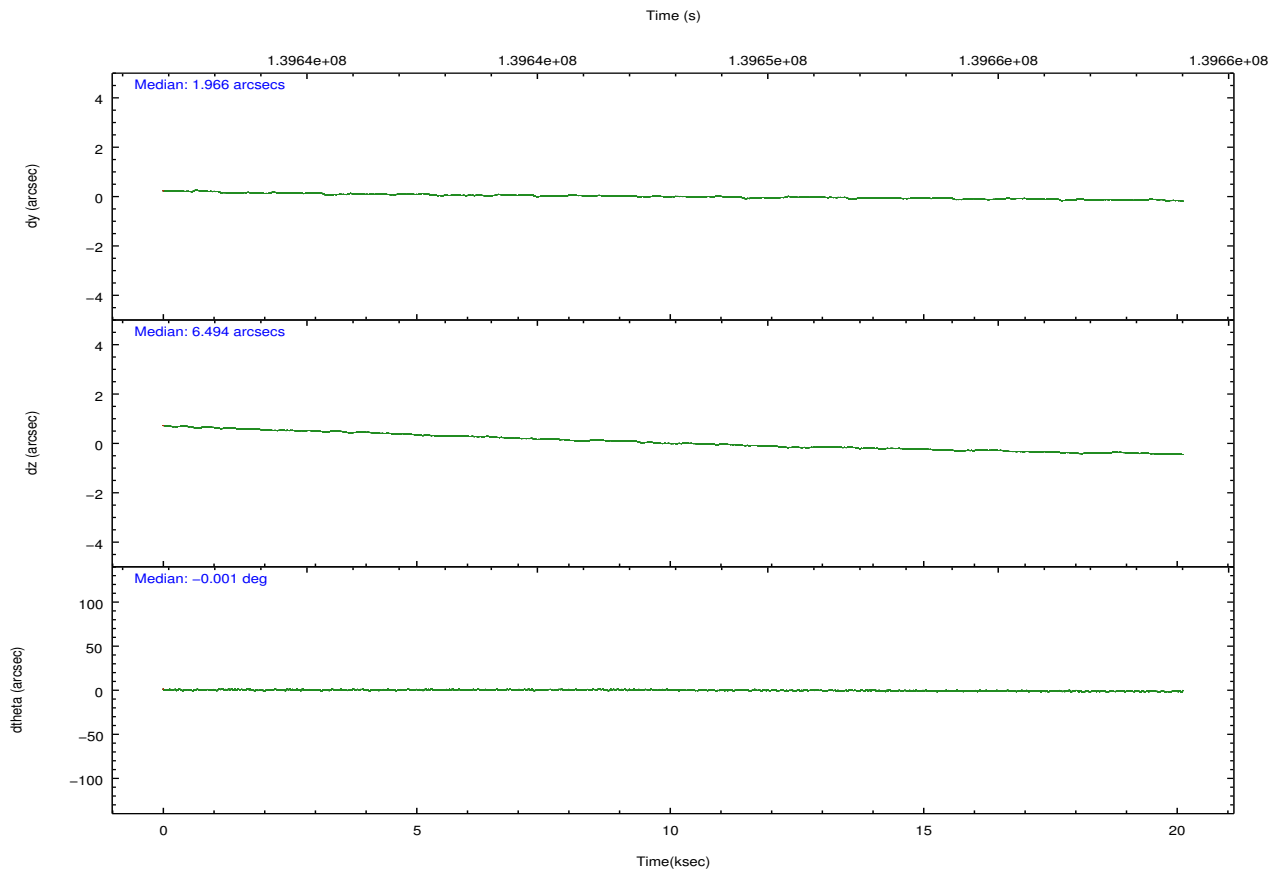
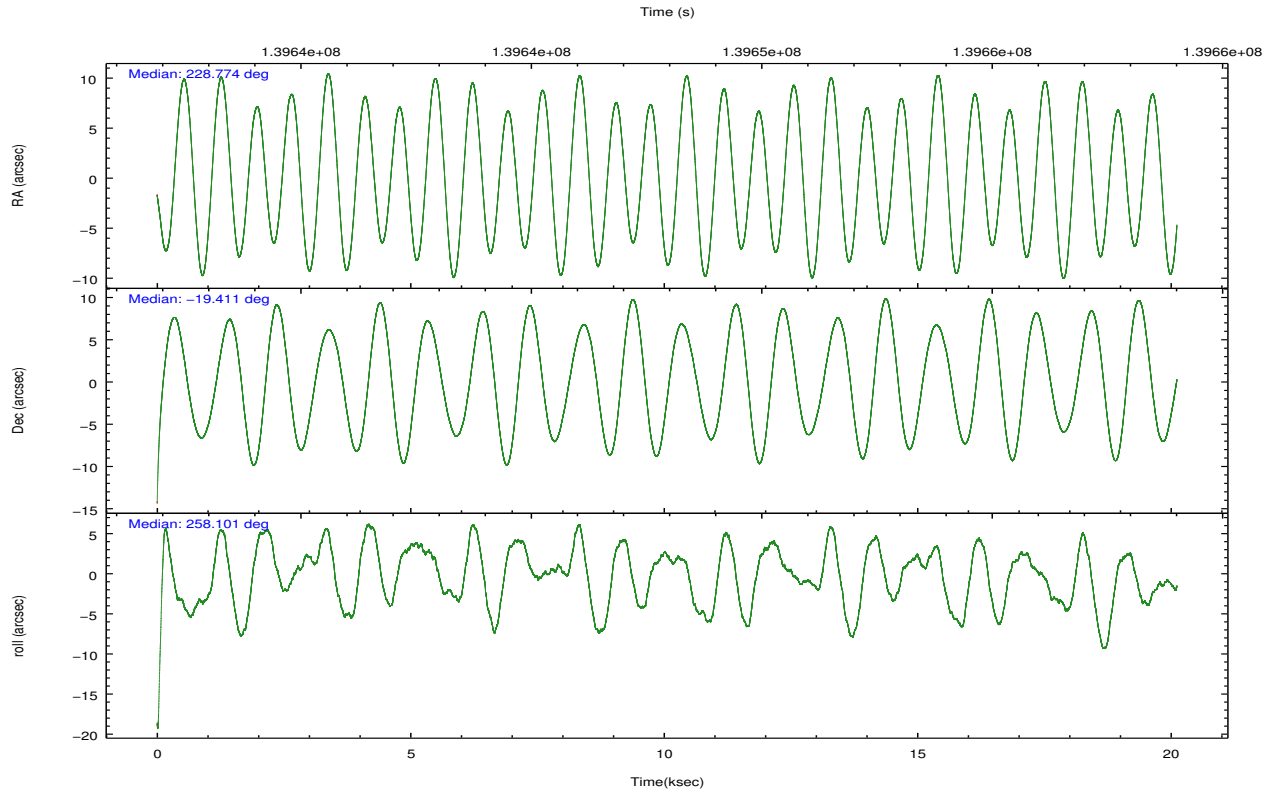
	ccd 0	ccd 1	ccd 2	ccd 3
grade 0 events	11129	11215	11494	11263
	8%	8%	8%	7%
grade 1 events	81	73	74	85
	0%	0%	0%	0%
grade 2 events	4801	4749	4788	4435
	3%	3%	3%	3%
grade 3 events	2141	2121	1907	1981
	1%	1%	1%	1%
grade 4 events	1978	2168	1934	1866
	1%	1%	1%	1%
grade 5 events	4903	5374	4641	5365
	3%	4%	3%	3%
grade 6 events	3938	4145	3788	3900
	3%	3%	2%	2%
grade 7 events	99098	100431	110646	112180
	77%	77%	79%	79%

2.2 Compared Parameters

Parameter	Planned	Actual	Parameter	Planned	Actual
Instrument	ACIS	ACIS	Obspar format version number	7	7
Detector	ACIS-0123	ACIS-0123	Obspar file type	PREDICTED	ACTUAL
Grating	NONE	NONE	Obspar update status	NONE	UPDATED
Data mode	VFAINT	VFAINT	Number of optional ACIS chips dropped	0	0
Observation mode	POINTING	POINTING	On-chip summing requested	N	N
[deg] Pointing RA	228.765634	228.7747211662735	Subarray requested	NONE	NONE
[deg] Pointing Dec	-19.384883	-19.41090628519658	Alternating exposures requested	N	N
[deg] Pointing Roll	257.891048	258.1027399732592	[s] Primary exposure time	0.000000	3.1
[mm] SIM focus pos	-0.782348	-0.7809083437167272			
[mm] SIM defocus	0	0.001439871863259334			
[mm] SIM translation stage pos	-233.592463	-233.5874344608287			
[mm] SIM translation stage offset	0	-0.005018542100998502			
[s] Observation start time (MET)	139638001.184000	139636821.5676			
Observation start date	2002-06-05T04:18:57	2002-06-05T04:00:21			
[s] Observation end time (MET)	139658001.184000	139658656.11849			
Observation end date	2002-06-05T09:52:17	2002-06-05T10:04:16			
Read mode	TIMED	TIMED			

2.3 Aspect



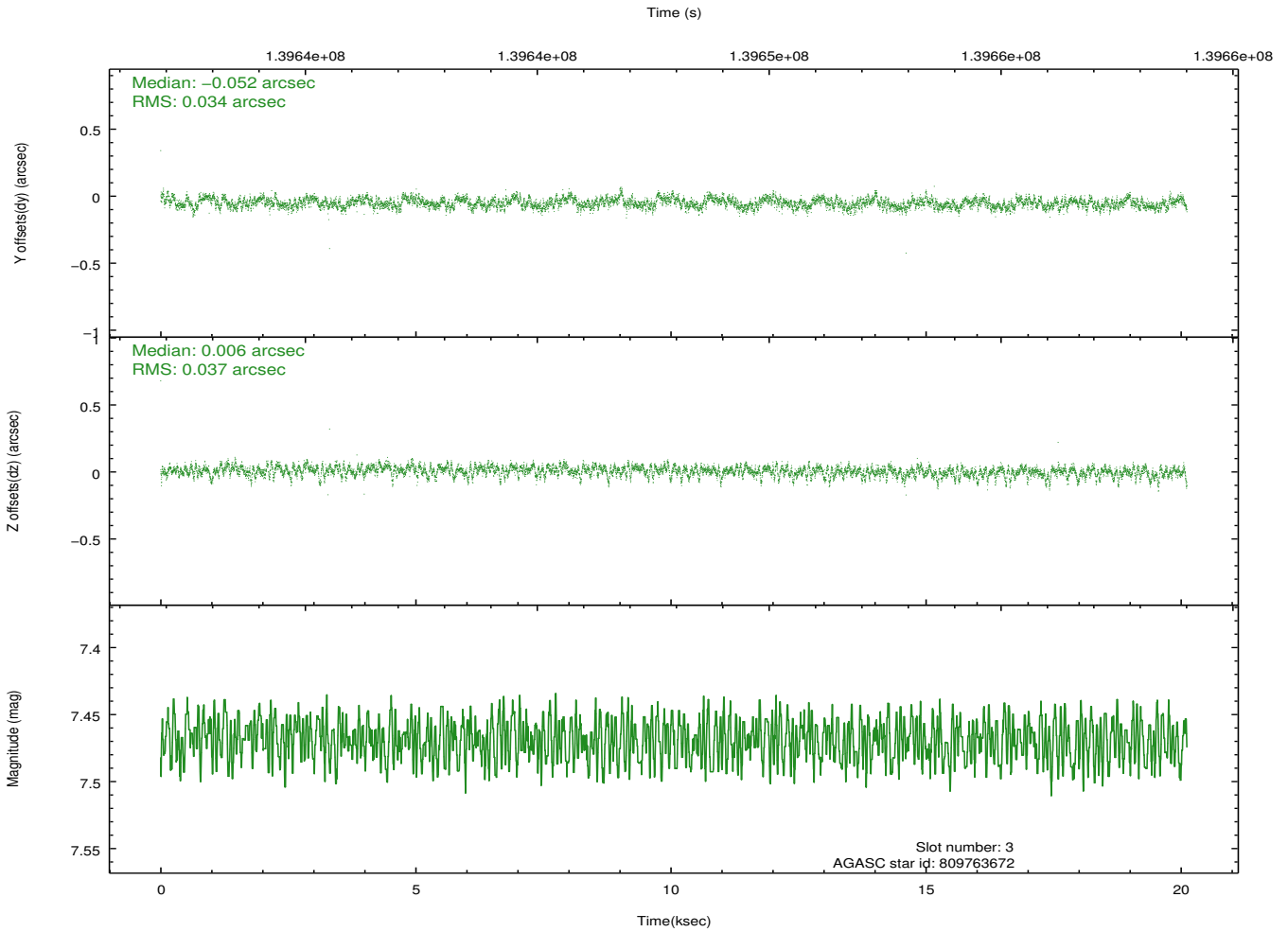
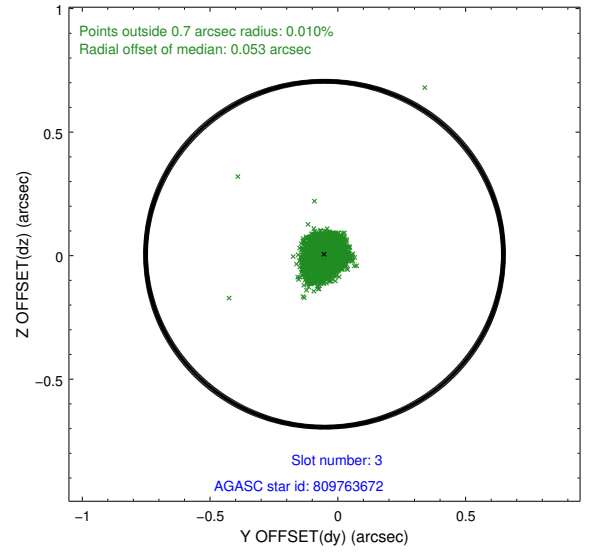
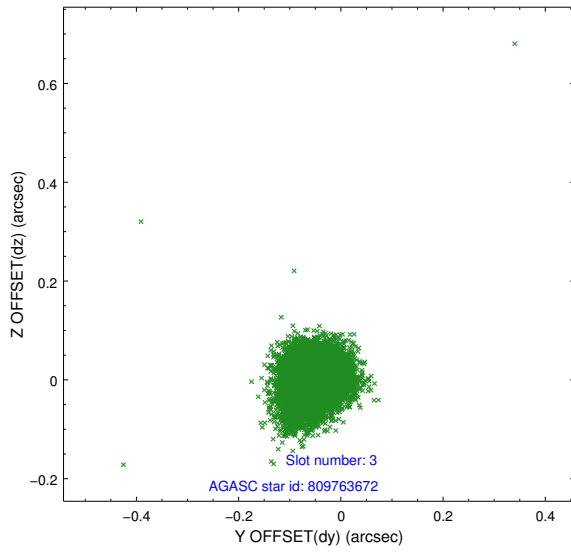


Slot Statistics

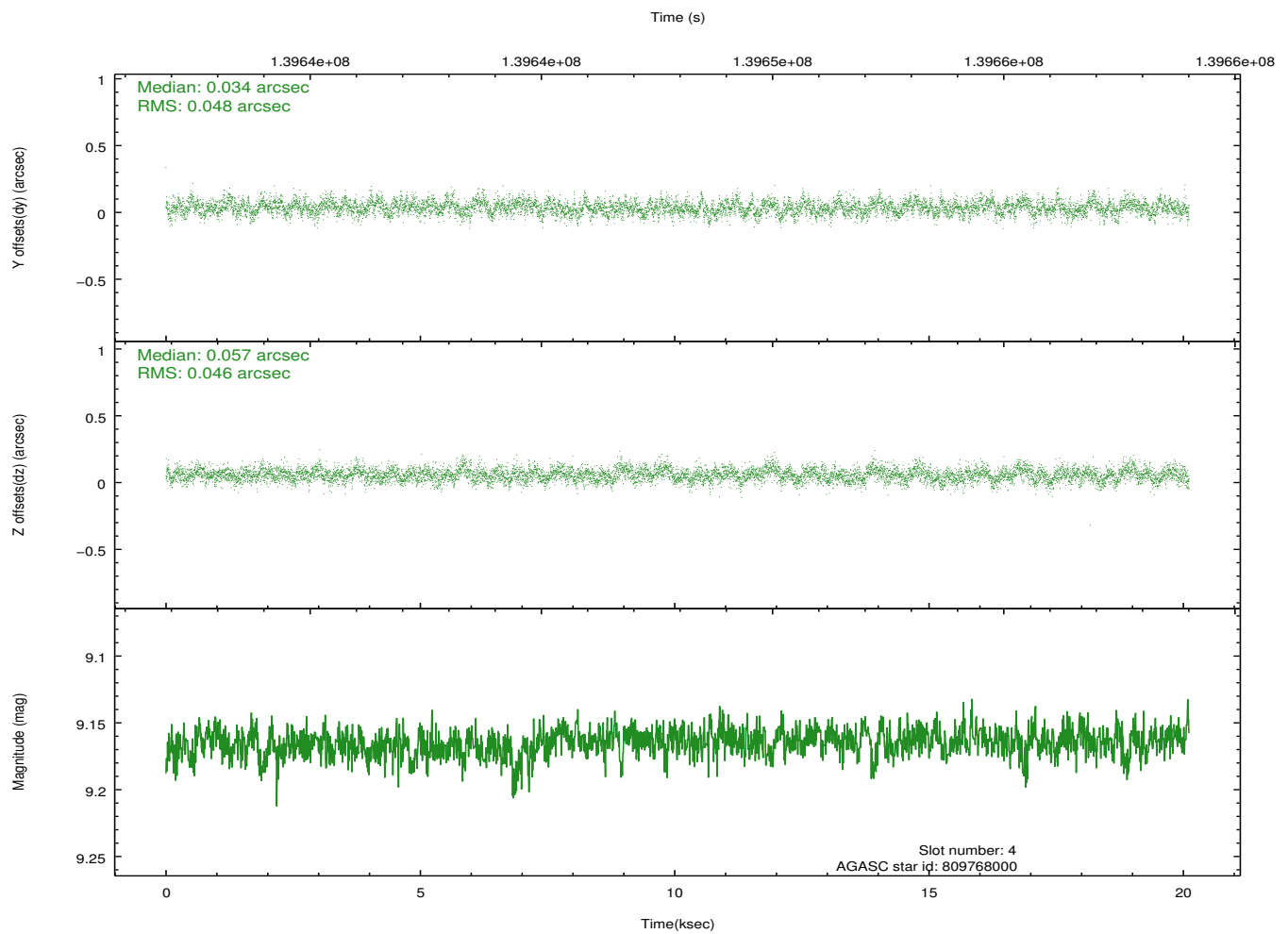
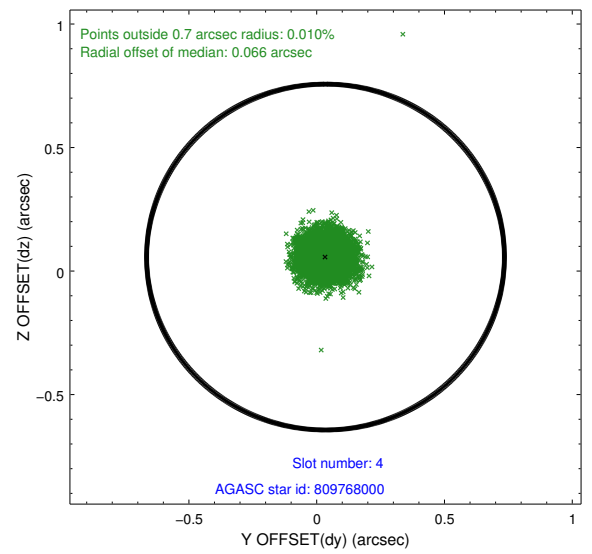
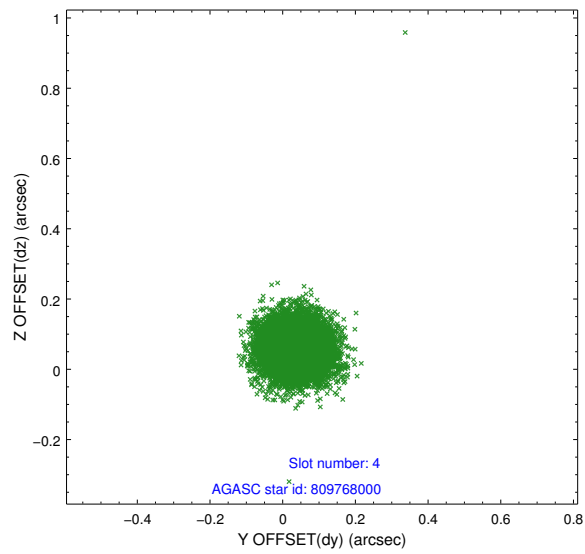
slot	status	id	mag	n_pts	med_dy	med_dz	dr1	dr2	ra	dec	mean_y	mean_z
0	FID	ACIS-I-1	7.24	4907	-0.012	0.020	0.014	0.023	0.000000	0.000000	937.82	-829.93
1	FID	ACIS-I-5	7.23	4905	-0.039	0.041	0.012	0.022	0.000000	0.000000	-1810.18	1067.54
2	FID	ACIS-I-6	7.26	4906	-0.039	0.010	0.020	0.029	0.000000	0.000000	403.19	1712.18
3	GUIDE	809763672	7.47	9813	-0.052	0.006	0.051	0.086	228.584213	-18.953335	-1390.12	-928.95
4	GUIDE	809768000	9.16	9812	0.034	0.057	0.070	0.113	228.679264	-19.407220	139.15	-269.01
5	GUIDE	809765760	8.74	9811	0.057	0.042	0.080	0.123	229.188364	-20.001489	1871.40	1865.30
6	GUIDE	809763472	9.73	9811	-0.005	0.002	0.122	0.197	229.511835	-18.885739	-2285.70	2110.49
7	GUIDE	809763216	9.38	9807	-0.040	-0.108	0.107	0.174	228.184095	-18.817707	-1578.72	-2364.28

2.4 Star Slots

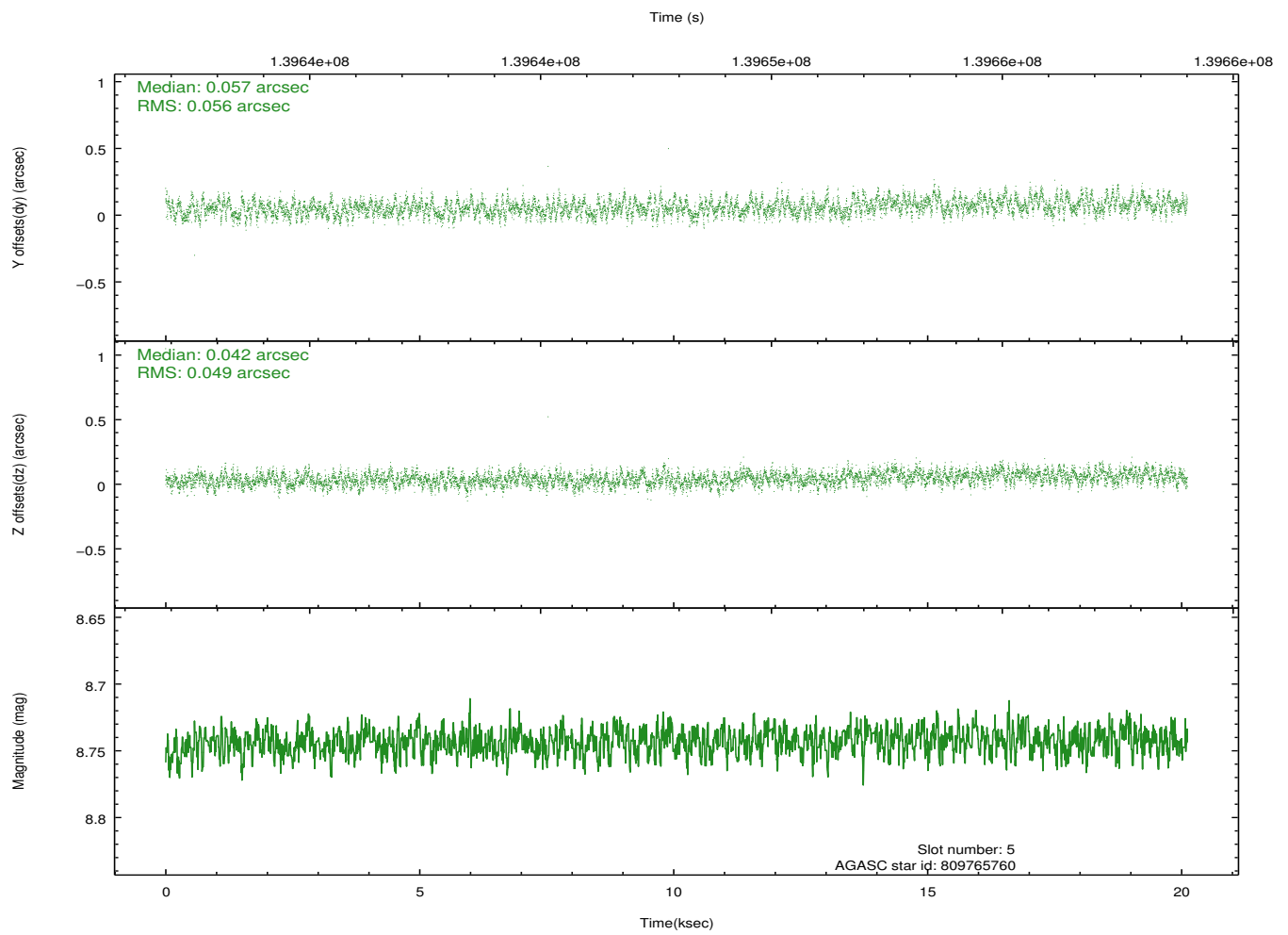
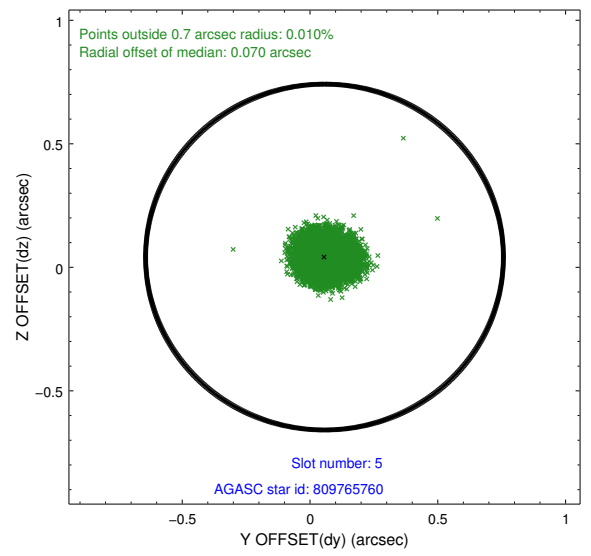
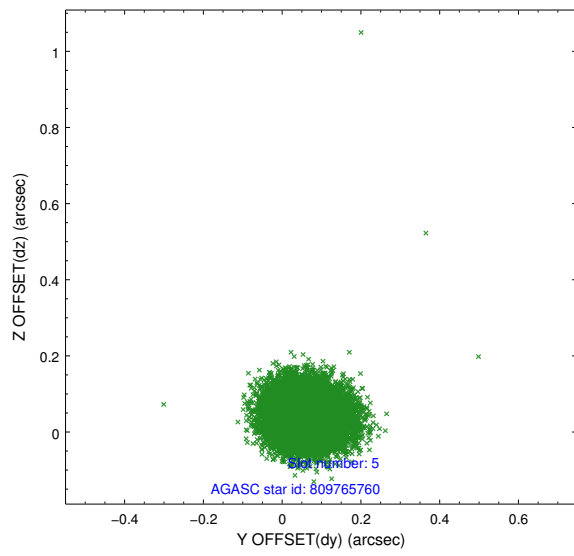
2.4.1 Slot 3



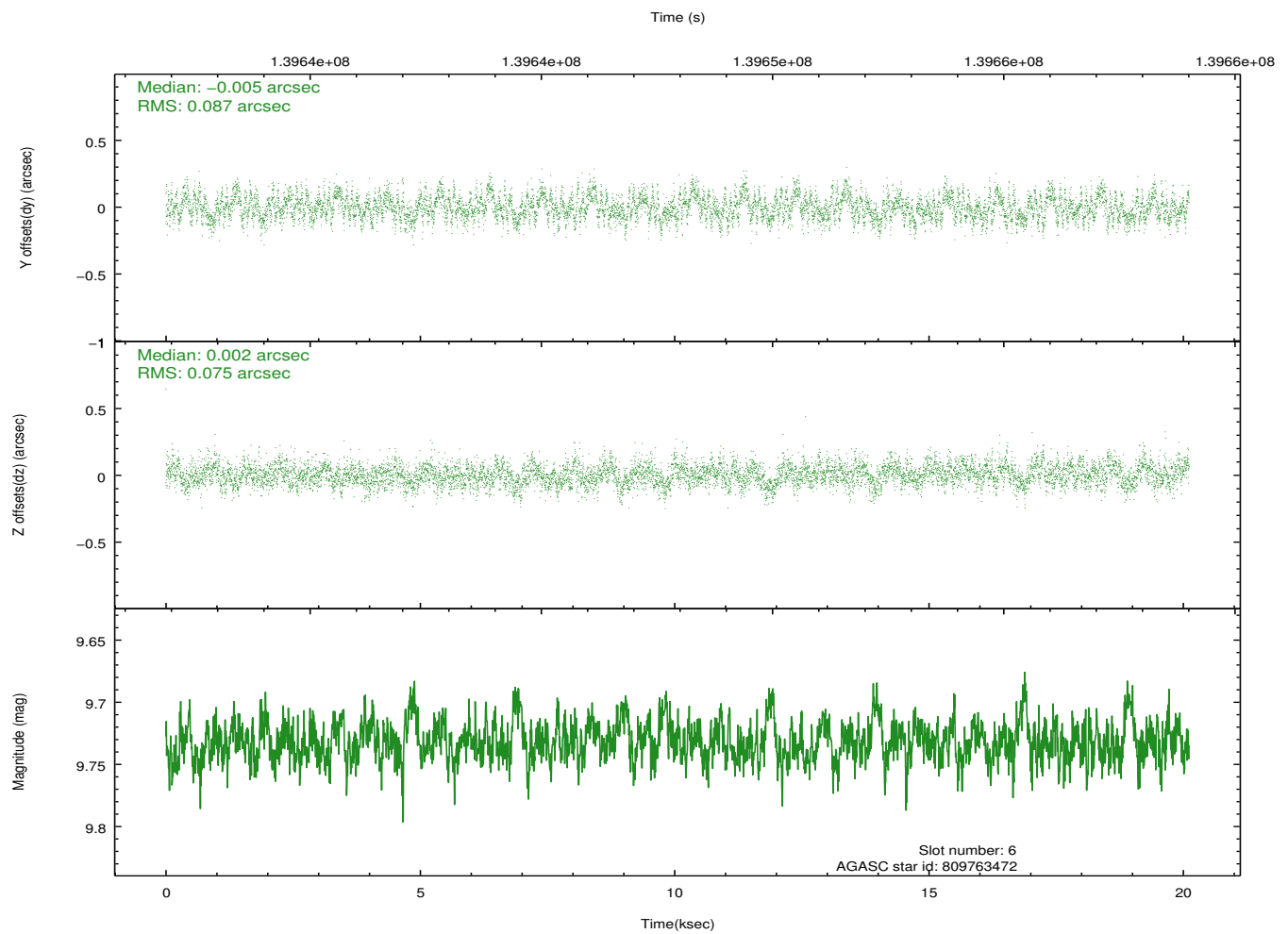
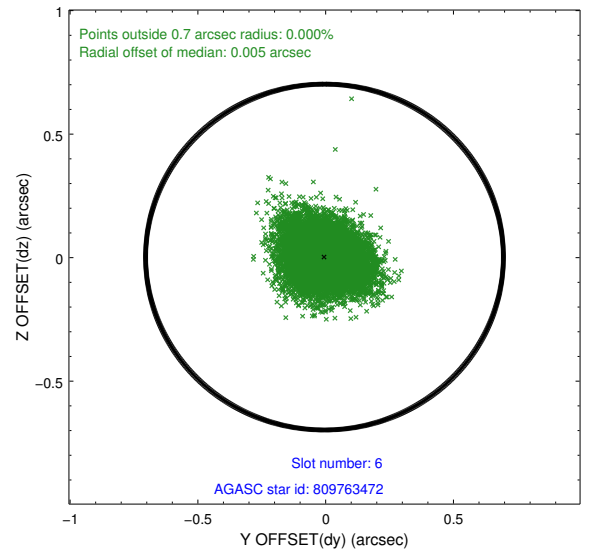
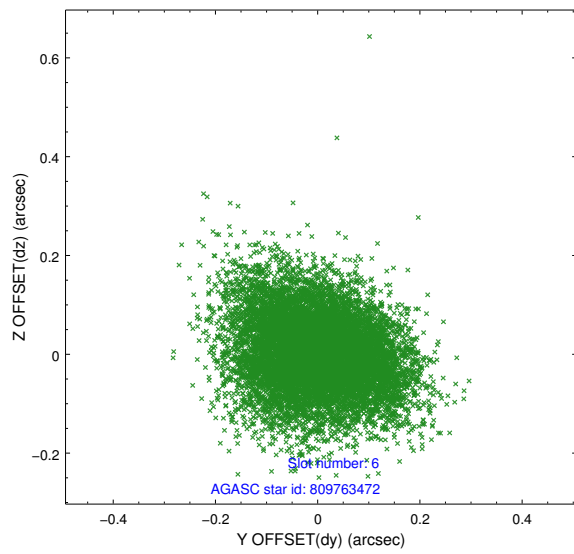
2.4.2 Slot 4



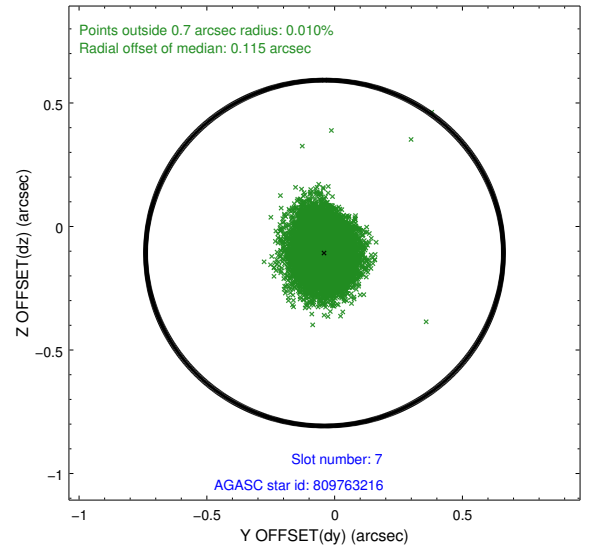
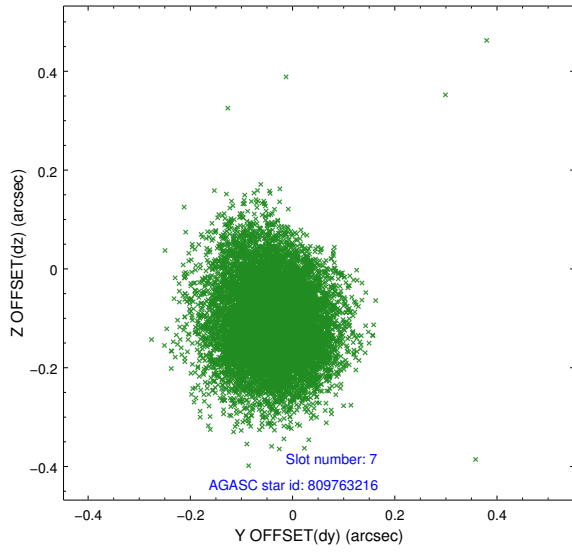
2.4.3 Slot 5



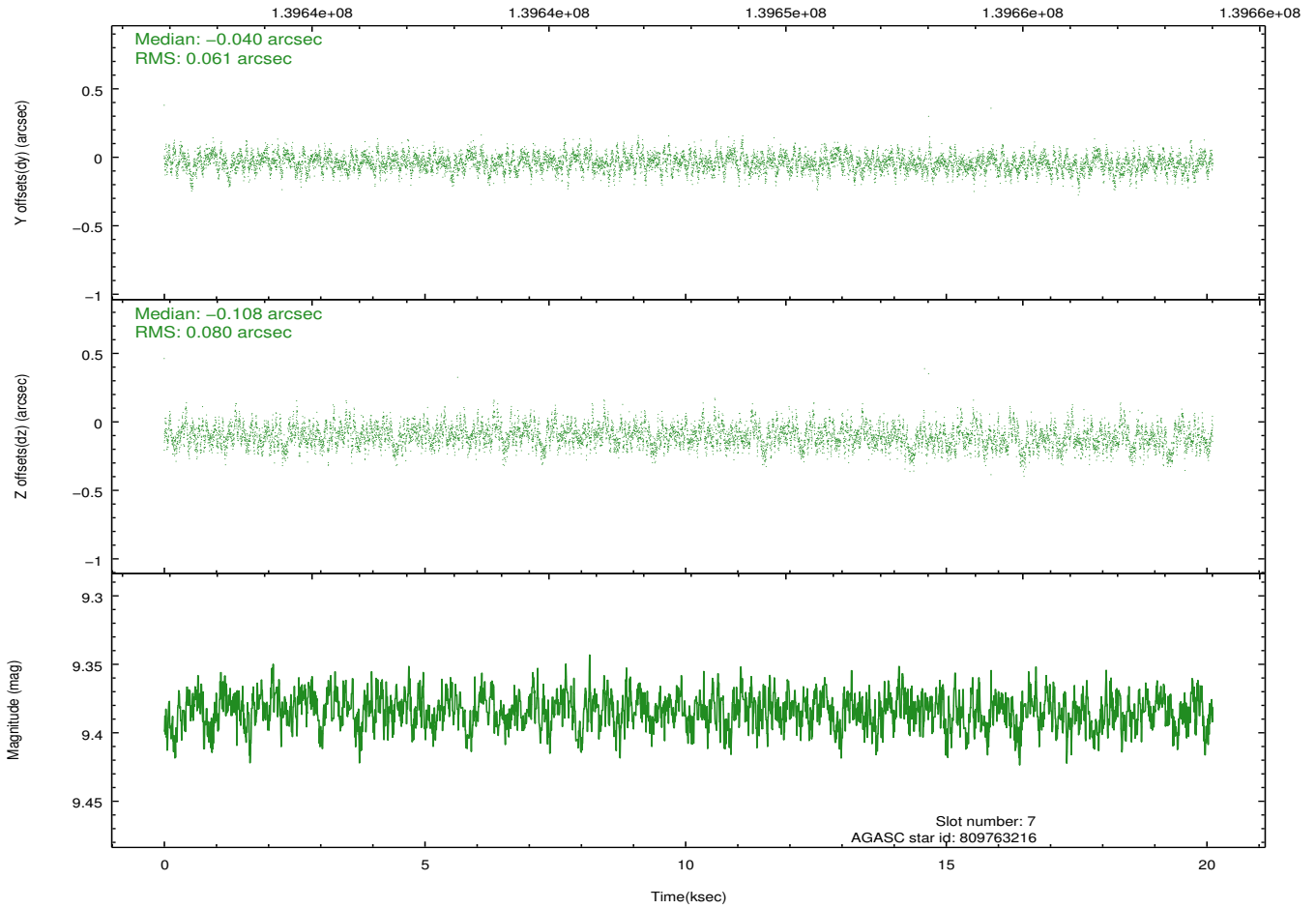
2.4.4 Slot 6



2.4.5 Slot 7

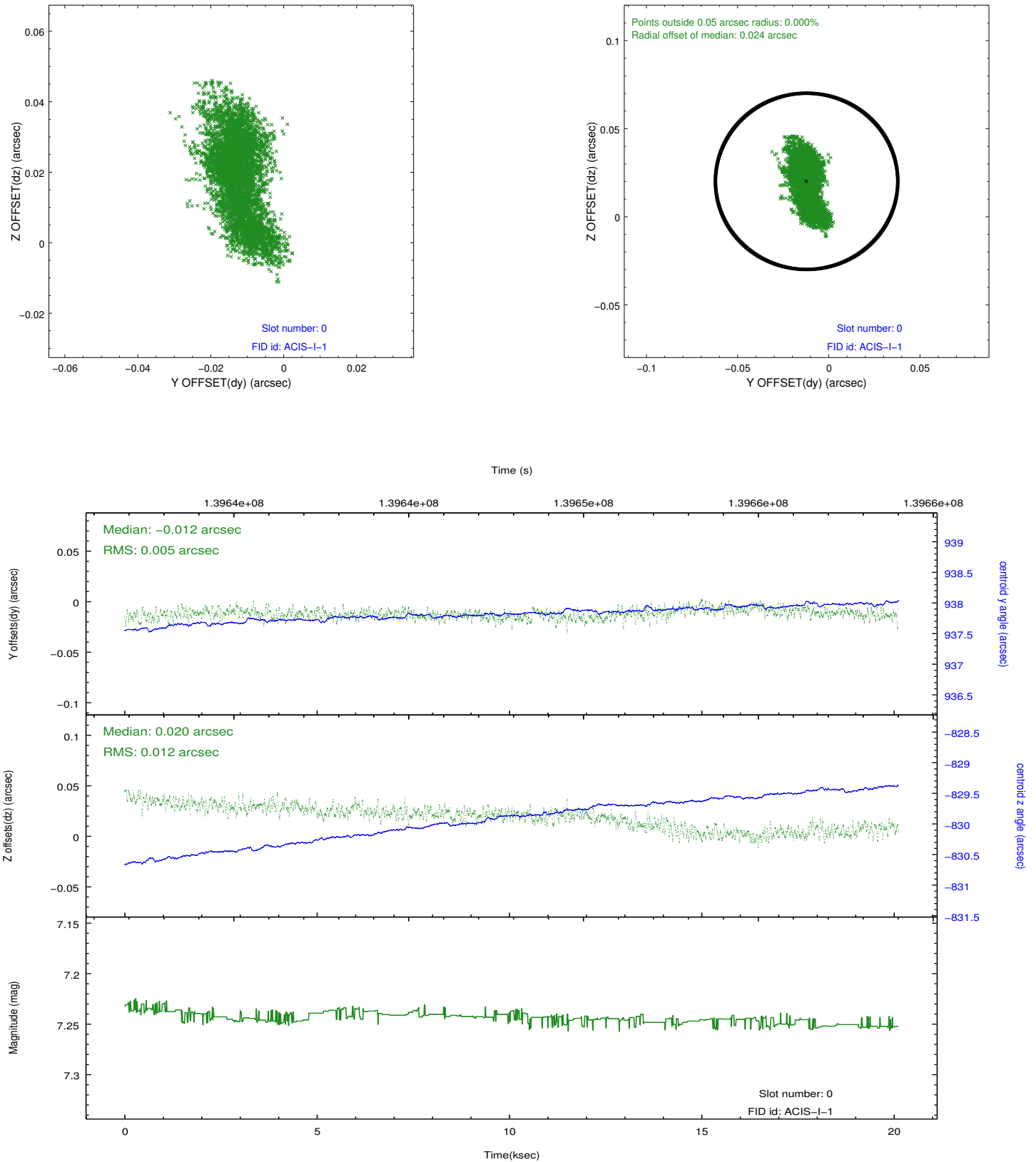


Time (s)

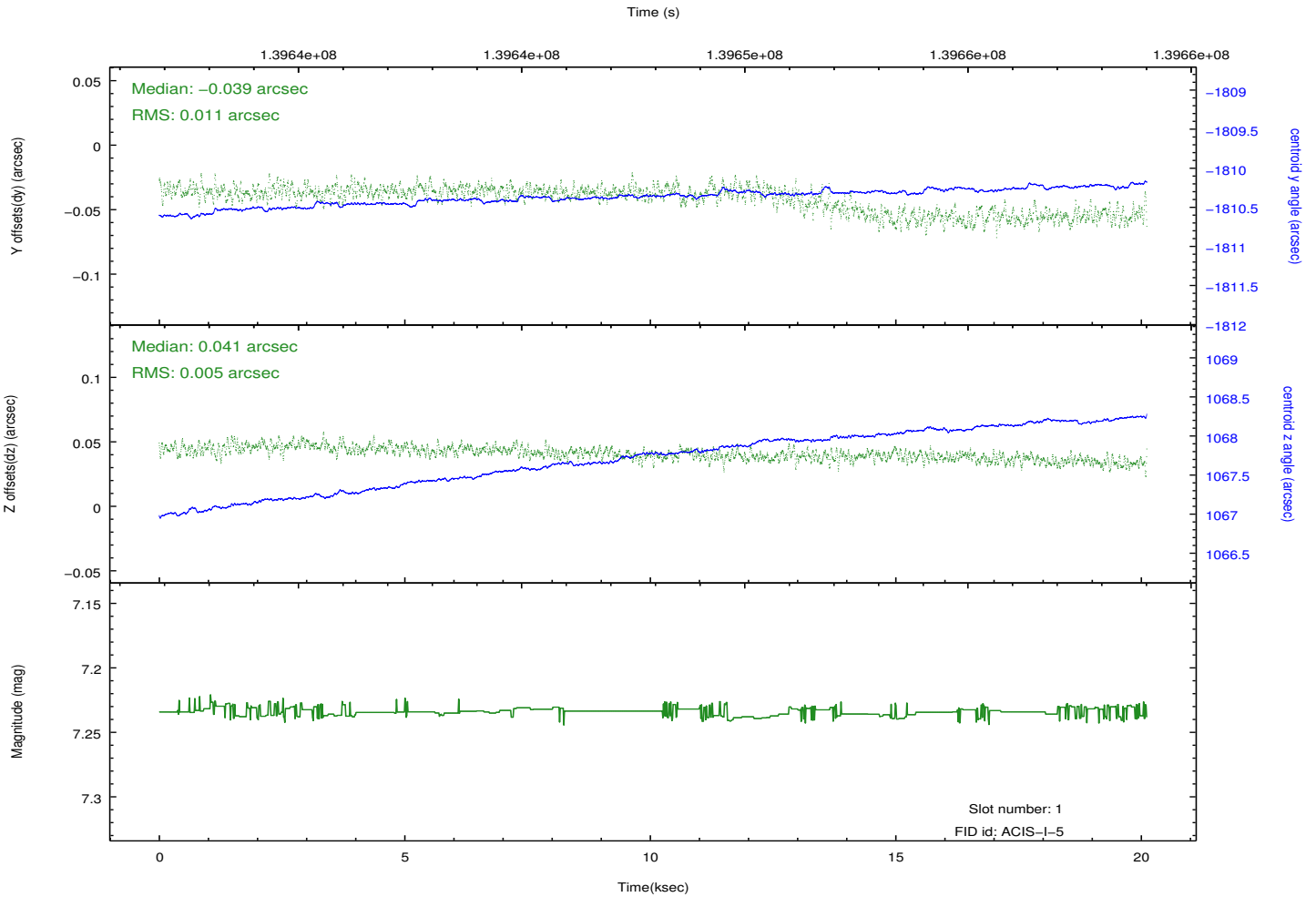
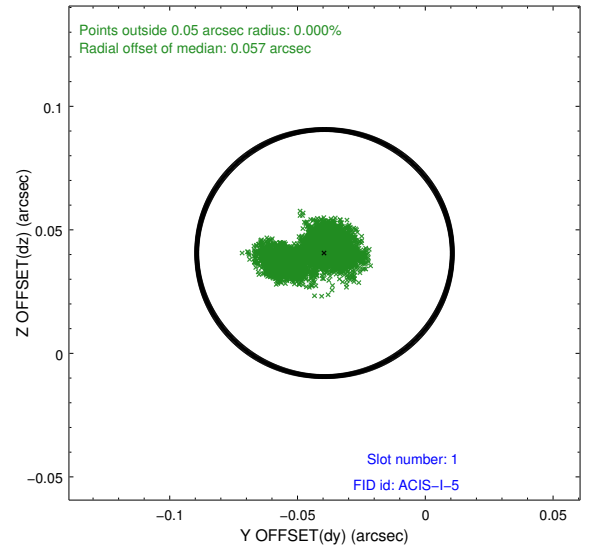
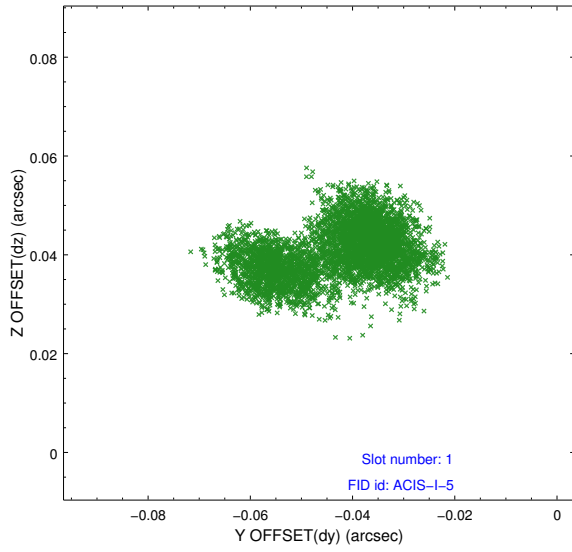


2.5 FID Slots

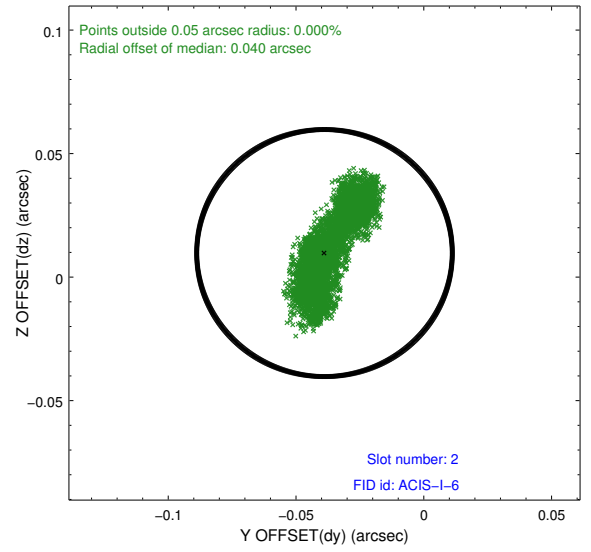
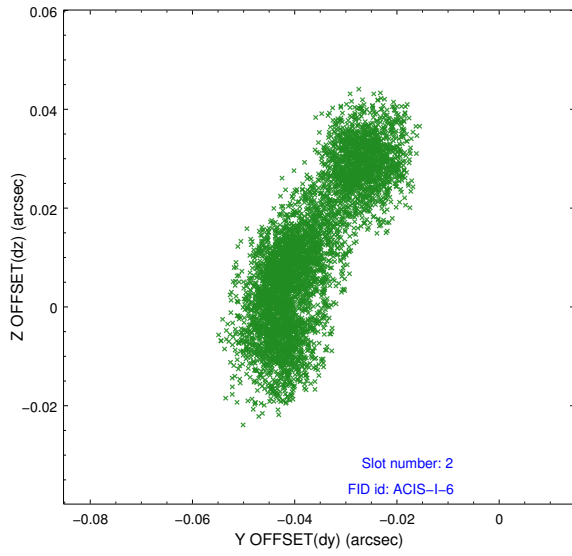
2.5.1 Slot 0



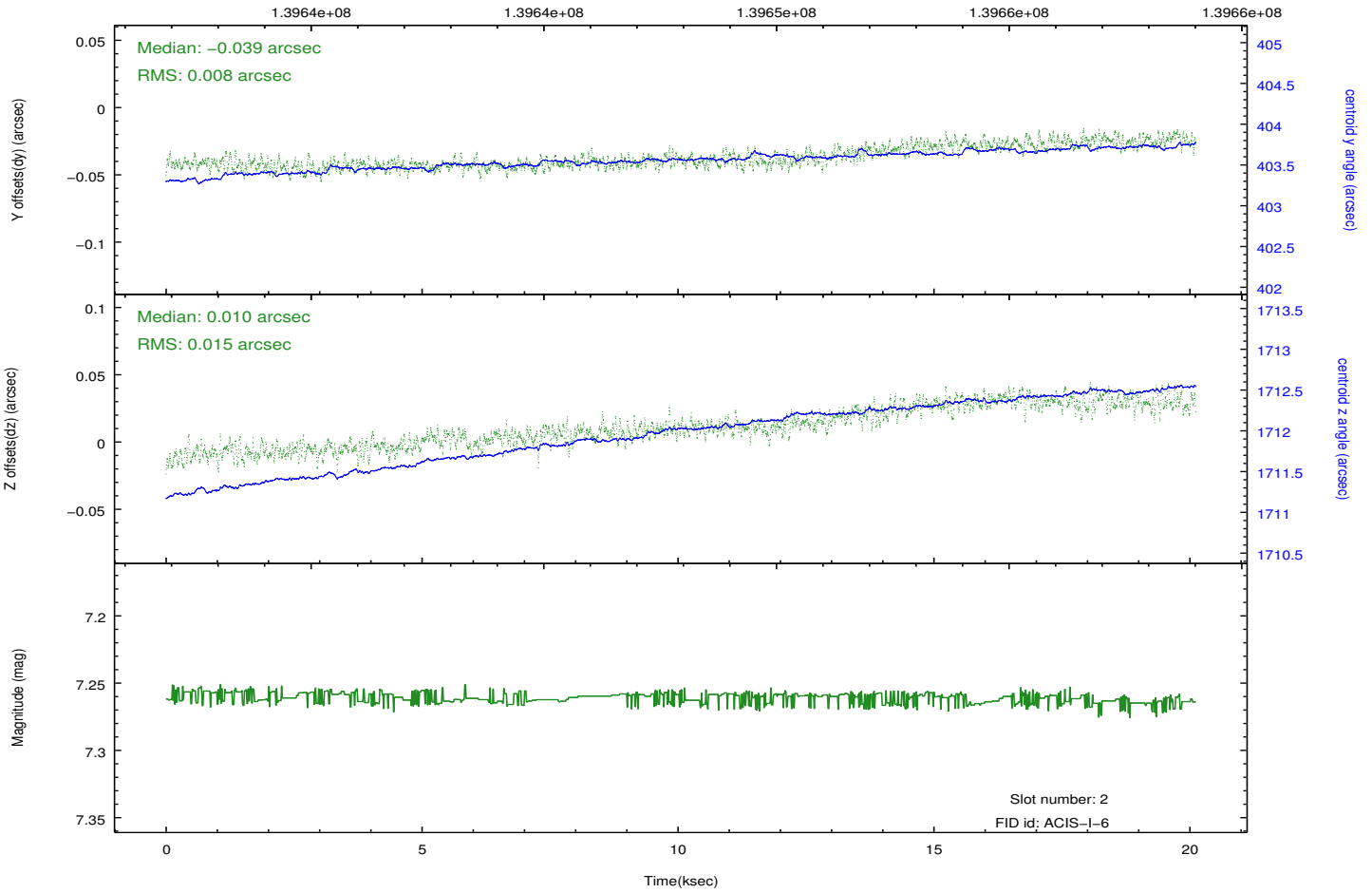
2.5.2 Slot 1



2.5.3 Slot 2



Time (s)



A Summary

A.1 Status

V&V Scientist	Beth Sundheim
V&V Date (YYYY-MM-DD)	2012.10.18
V&V Edition	1
V&V Disposition and Status	OK
V&V Charge Time	20.078

A.2 Comments

Joint proposal with HST.