

V&V Reference Report

L2 ASCDS Version : 8.4.5

Observation 2834 - L2 Version 3
Chandra X-Ray Center

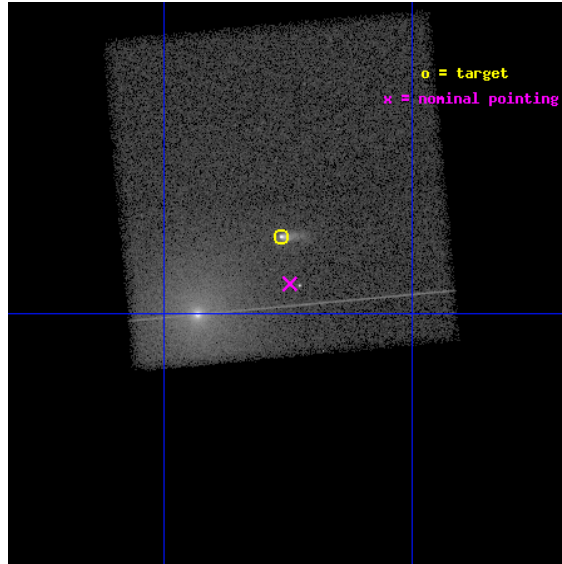
L2 Processing Date : Oct 17 2012

Contents

1	Front	2
2	OBI	3
2.1	OBI	3
2.1.1	Images	3
2.1.2	Bias	3
2.1.3	Parameters	4
2.1.4	Events	4
2.2	Compared Parameters	5
2.3	Aspect	6
2.4	Star Slots	9
2.4.1	Slot 3	9
2.4.2	Slot 4	10
2.4.3	Slot 5	11
2.4.4	Slot 6	12
2.4.5	Slot 7	13
2.5	FID Slots	14
2.5.1	Slot 0	14
2.5.2	Slot 1	15
2.5.3	Slot 2	16
A	Summary	17
A.1	Status	17
A.2	Comments	17

1 Front

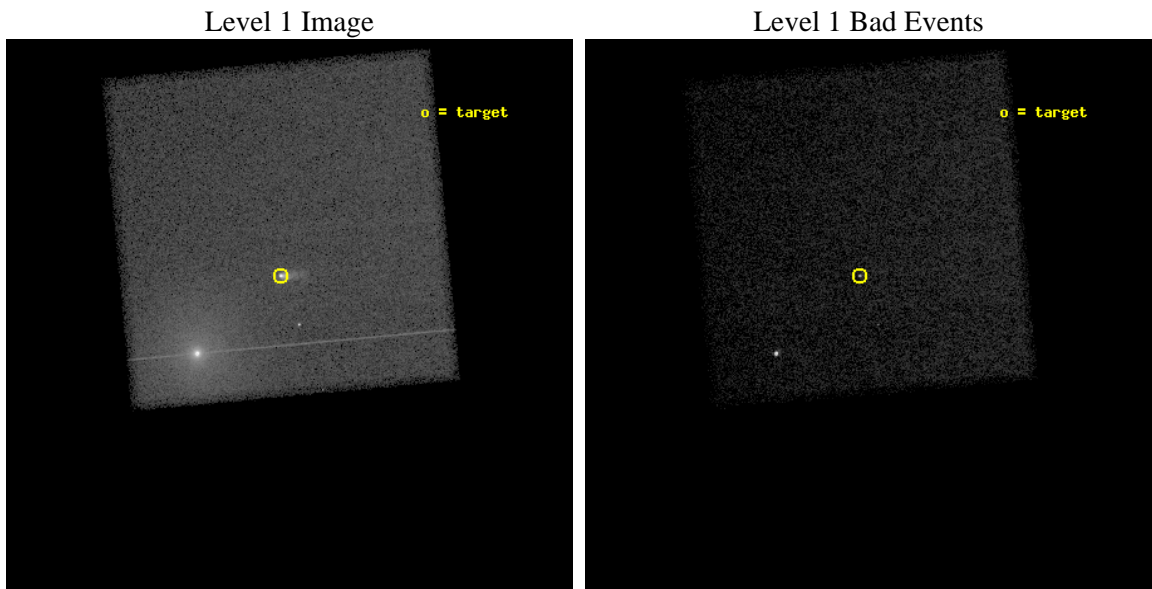
seq_num	500284	Sequence number
obs_id	2834	Observation id
title	BUILDING A BETTER MOUSE-TRAP: X-RAY IMAGING OF G359.23-0.92	Propos
observer	Prof. Bryan Gaensler	Principal investigator
object	MOUSE	Source name
dtcycle	0	
cycle	P	events from which exps? Prim/Second/Both
ra_targ	266.815833	Observer's specified target RA [deg]
dec_targ	-29.966944	Observer's specified target Dec [deg]
ra_nom	266.81162854879	Nominal RA [deg]
dec_nom	-29.987390507102	Nominal Dec [deg]
roll_nom	264.68700875254	Nominal Roll [deg]
revision	3	Processing version of data
ontime	36789.0	Sum of GTIs [s]
livetime	36292.518348986	Livetime [s]
ontime7	36789.0	Sum of GTIs [s]
l2events	240150	Number of level 2 events



2 OBI

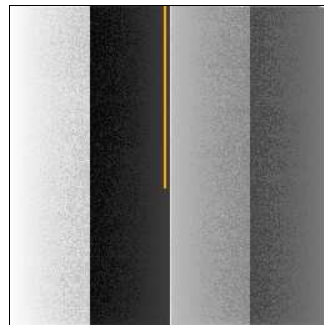
2.1 OBI

2.1.1 Images



2.1.2 Bias

Chip 7



2.1.3 Parameters

obi_num	0	Obi number	sched_exp_time	36400.000000	[s] Scheduled observation exposure time
ascdsver	8.4.5	Processing system revision	ontime	36789.0	Sum of GTIs [s]
caldbver	4.5.2	 	ontime7	36789.0	Sum of GTIs [s]
date	2012-10-17T00:03:19	Date and time of file creation	l1events	427144	Number of level 1 events
revision	3	Processing version of data			

2.1.4 Events

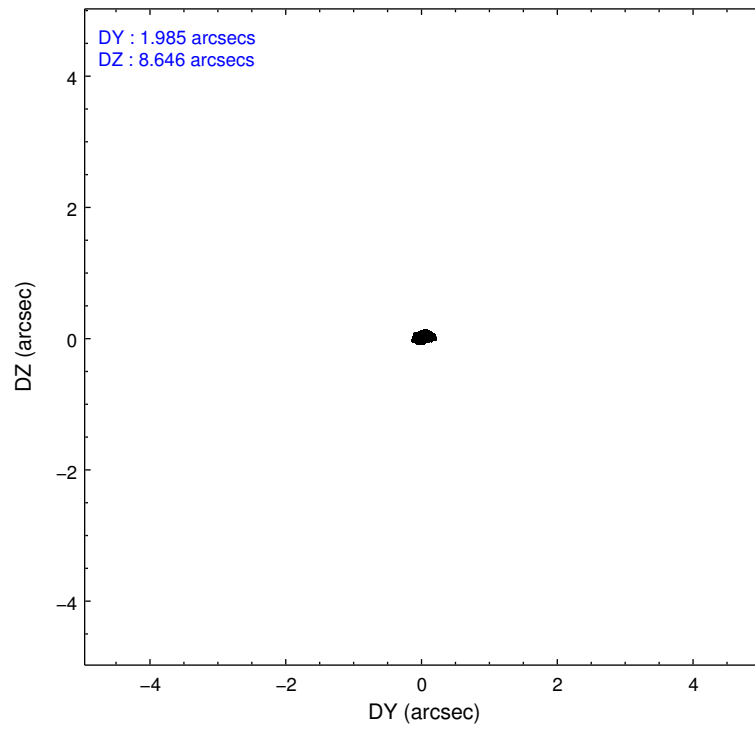
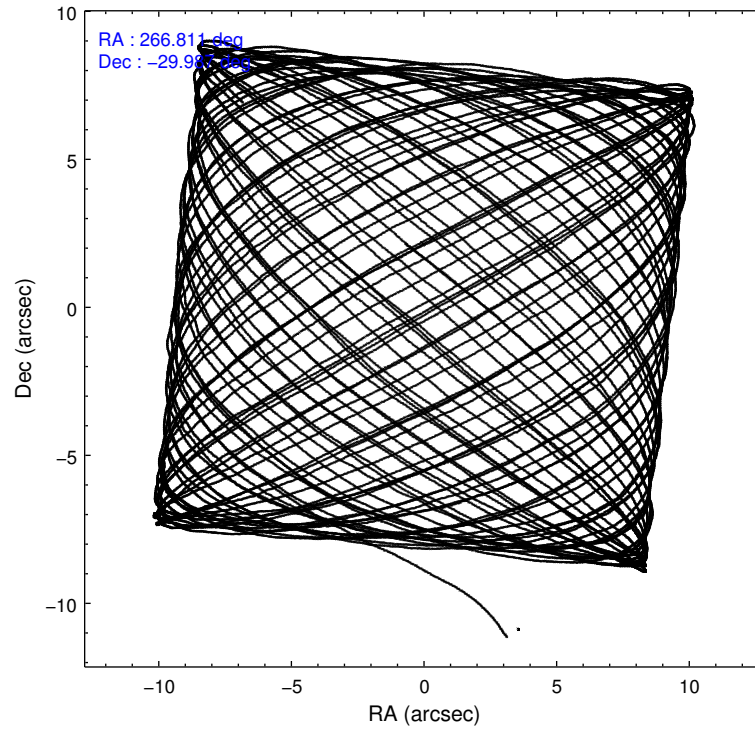
	ccd 7
level 1 events	427144
rejected events	183439
rejected %	42%

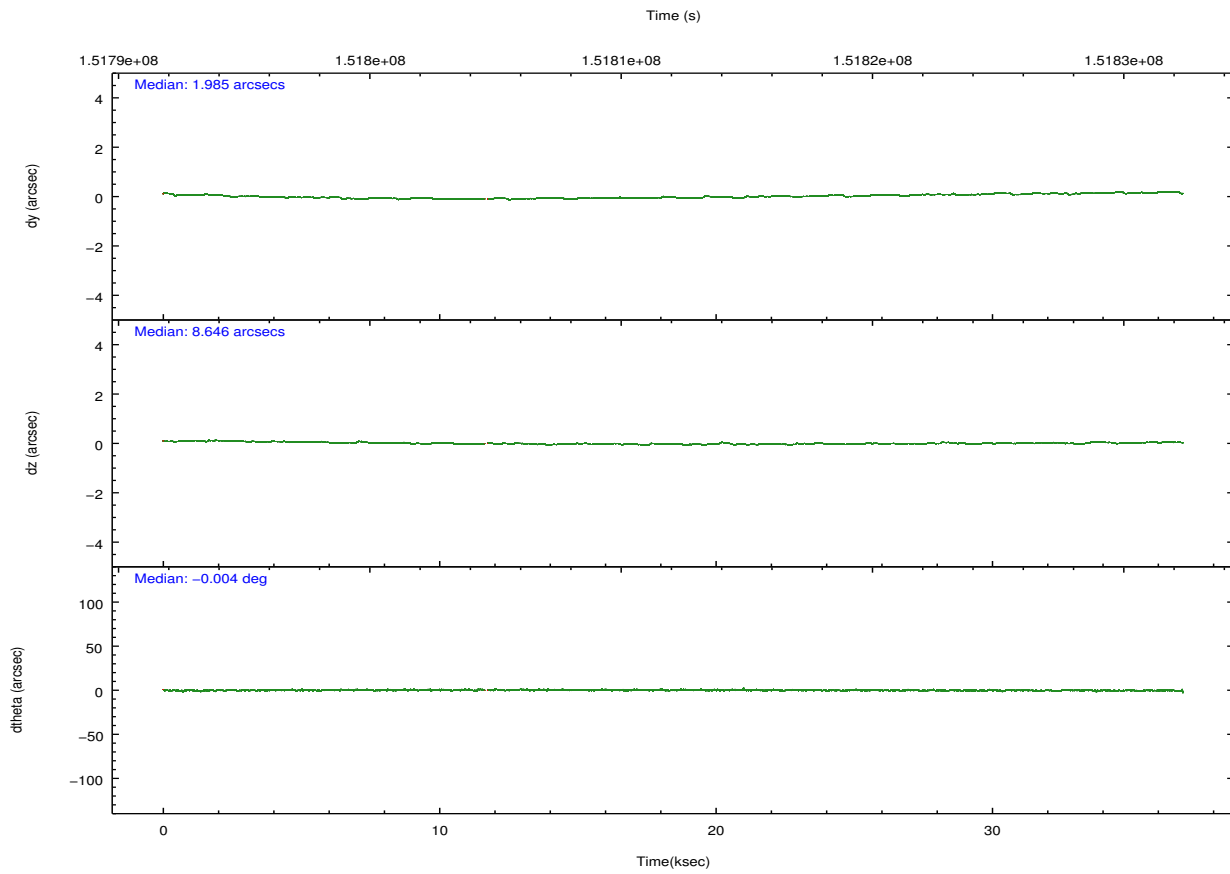
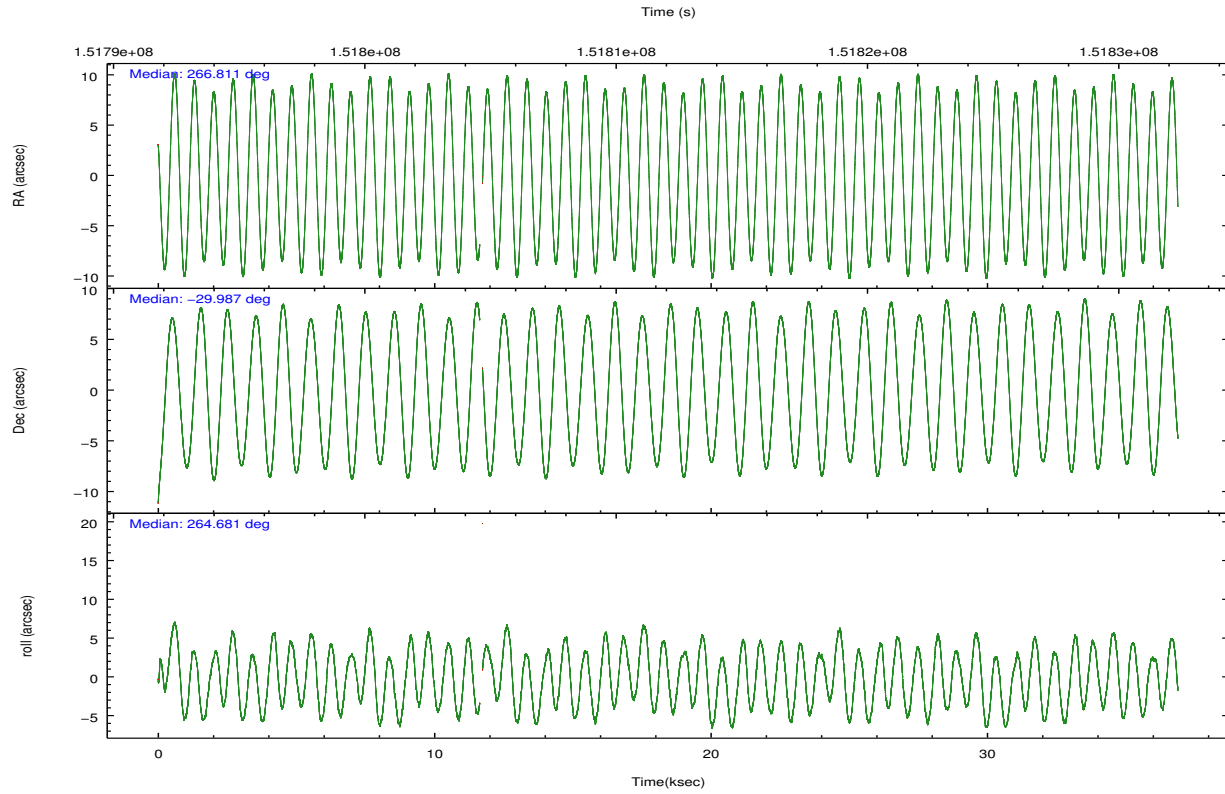
	ccd 7
grade 0 events	32872
	7%
grade 1 events	872
	0%
grade 2 events	53434
	12%
grade 3 events	24130
	5%
grade 4 events	23784
	5%
grade 5 events	31485
	7%
grade 6 events	111471
	26%
grade 7 events	149096
	34%

2.2 Compared Parameters

Parameter	Planned	Actual	Parameter	Planned	Actual
Instrument	ACIS	ACIS	Obspar format version number	7	7
Detector	ACIS-7	ACIS-7	Obspar file type	PREDICTED	ACTUAL
Grating	NONE	NONE	Obspar update status	NONE	UPDATED
Data mode	FAINT	FAINT	Number of optional ACIS chips dropped	0	0
Observation mode	POINTING	POINTING	On-chip summing requested	N	N
[deg] Pointing RA	266.798130	266.8116285487881	Subarray requested	NONE	NONE
[deg] Pointing Dec	-29.962797	-29.98739050710161	Alternating exposures requested	N	N
[deg] Pointing Roll	264.523640	264.6870087525376	[s] Primary exposure time	0.000000	3
[mm] SIM focus pos	-0.684267	-0.6828225247311905			
[mm] SIM defocus	0	0.001444936568705701			
[mm] SIM translation stage pos	-190.132523	-190.1400660498719			
[mm] SIM translation stage offset	0	0.00754346686406393			
[s] Observation start time (MET)	151794106.184000	151792990.9934			
Observation start date	2002-10-23T21:00:42	2002-10-23T20:43:10			
[s] Observation end time (MET)	151830506.184000	151830957.50748			
Observation end date	2002-10-24T07:07:22	2002-10-24T07:15:57			
Read mode	TIMED	TIMED			

2.3 Aspect



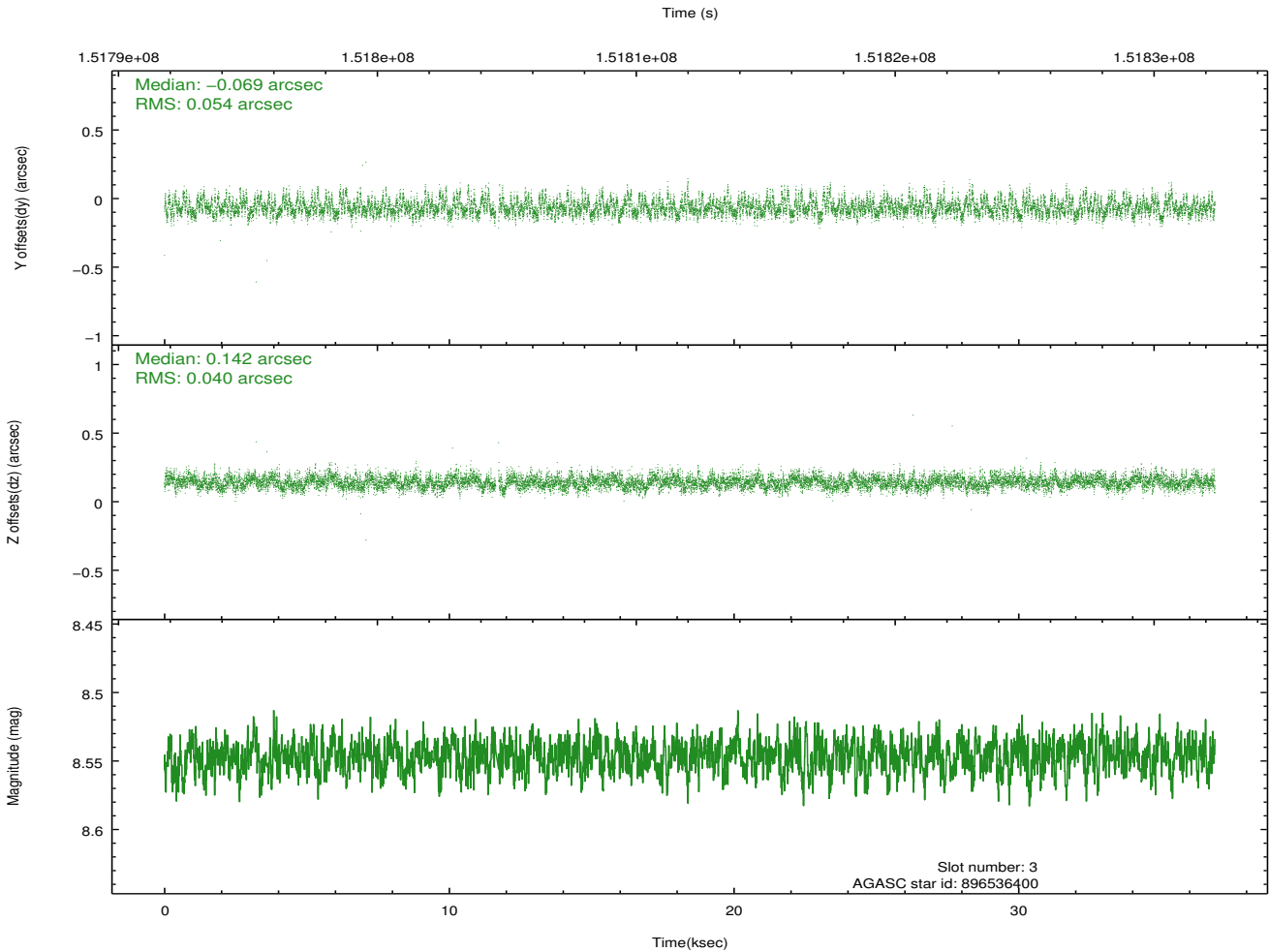
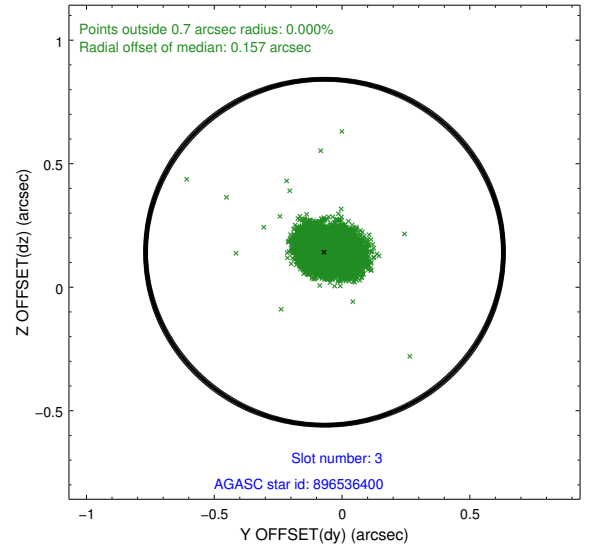
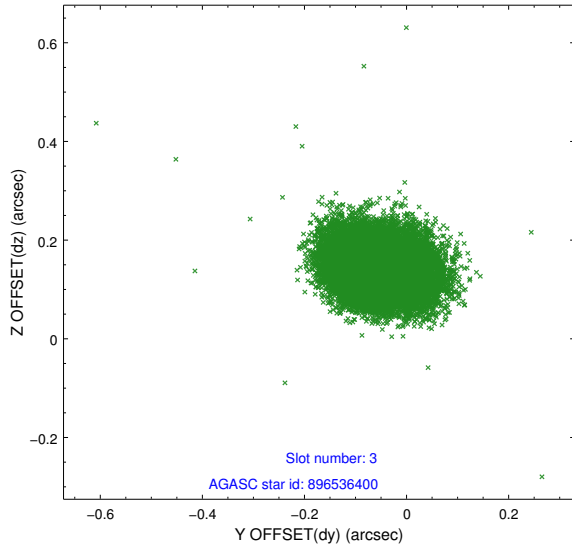


Slot Statistics

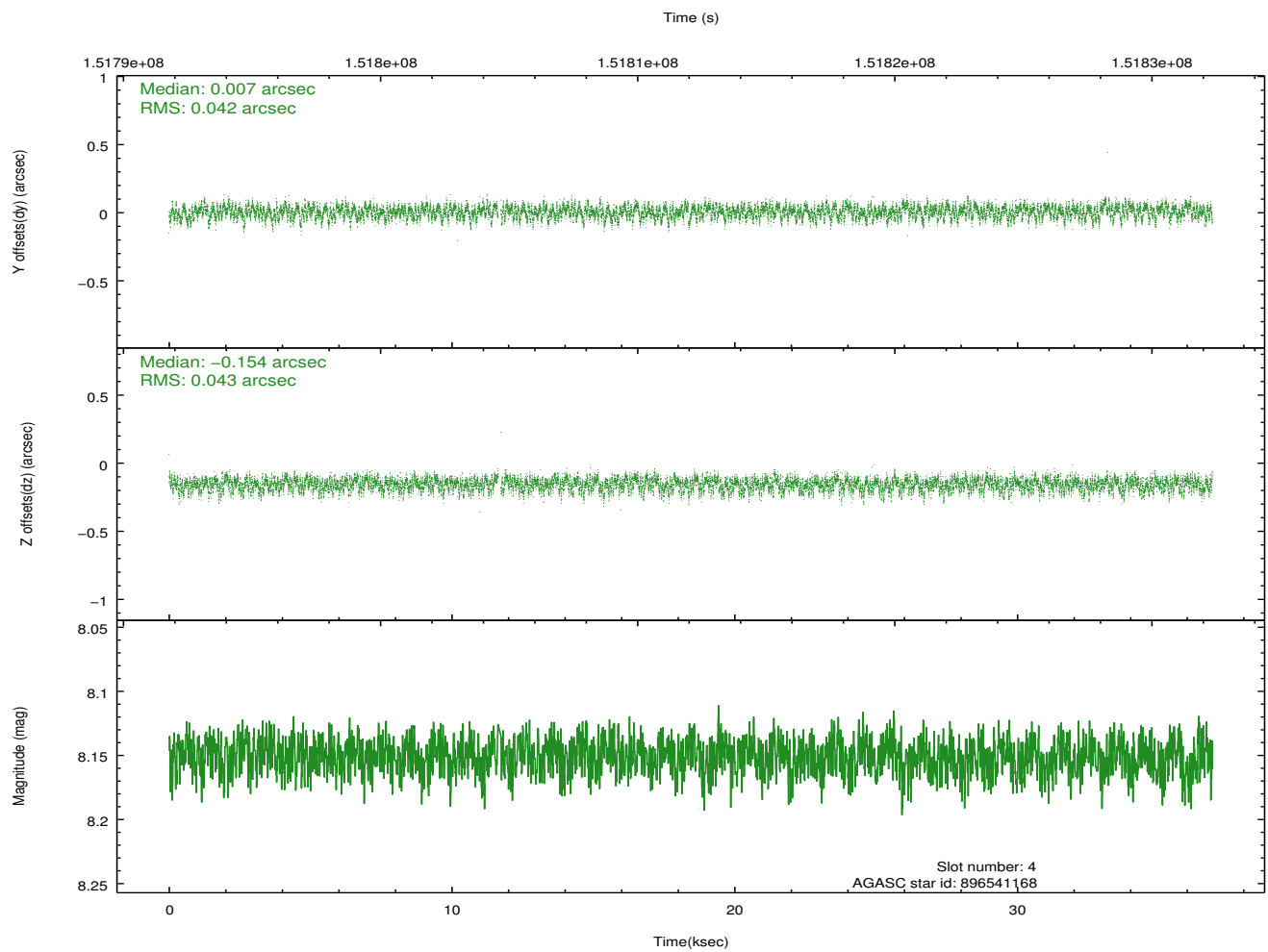
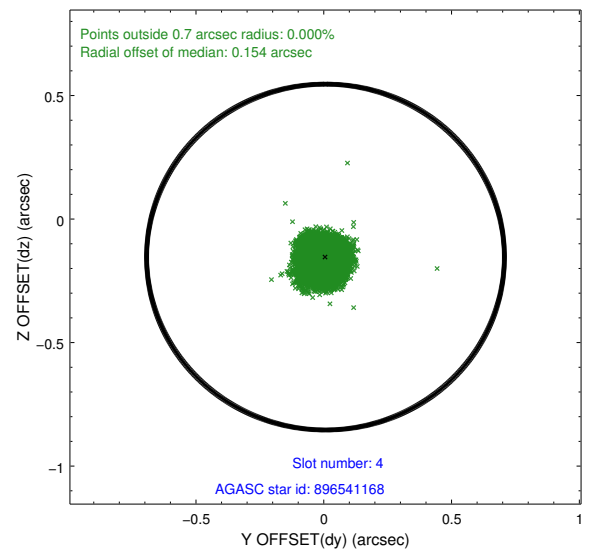
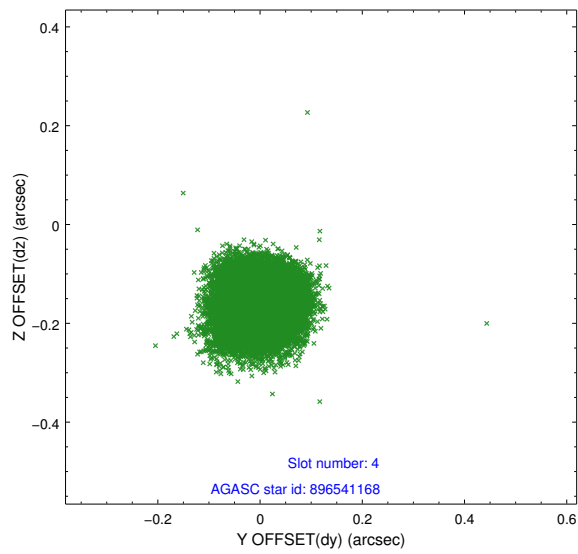
slot	status	id	mag	n_pts	med_dy	med_dz	dr1	dr2	ra	dec	mean_y	mean_z
0	FID	ACIS-S-2	7.10	8976	-0.032	-0.015	0.007	0.011	0.000000	0.000000	-754.65	-1729.88
1	FID	ACIS-S-4	7.20	8975	-0.005	0.019	0.006	0.011	0.000000	0.000000	2158.65	178.60
2	FID	ACIS-S-5	7.23	8974	0.006	0.004	0.007	0.012	0.000000	0.000000	-1807.41	172.30
3	GUIDE	896536400	8.55	17944	-0.069	0.142	0.070	0.118	267.359146	-29.438655	-2042.06	1571.77
4	GUIDE	896541168	8.15	17948	0.007	-0.154	0.064	0.103	266.319970	-29.850801	-255.60	-1523.92
5	GUIDE	966919736	6.90	17949	0.089	0.014	0.052	0.085	267.322278	-30.597445	2123.16	1836.17
6	GUIDE	966920656	9.84	17937	0.103	-0.047	0.102	0.165	266.290188	-30.347457	1533.06	-1437.63
7	GUIDE	966921160	9.32	17925	-0.132	0.053	0.093	0.153	267.266831	-30.083158	294.86	1495.57

2.4 Star Slots

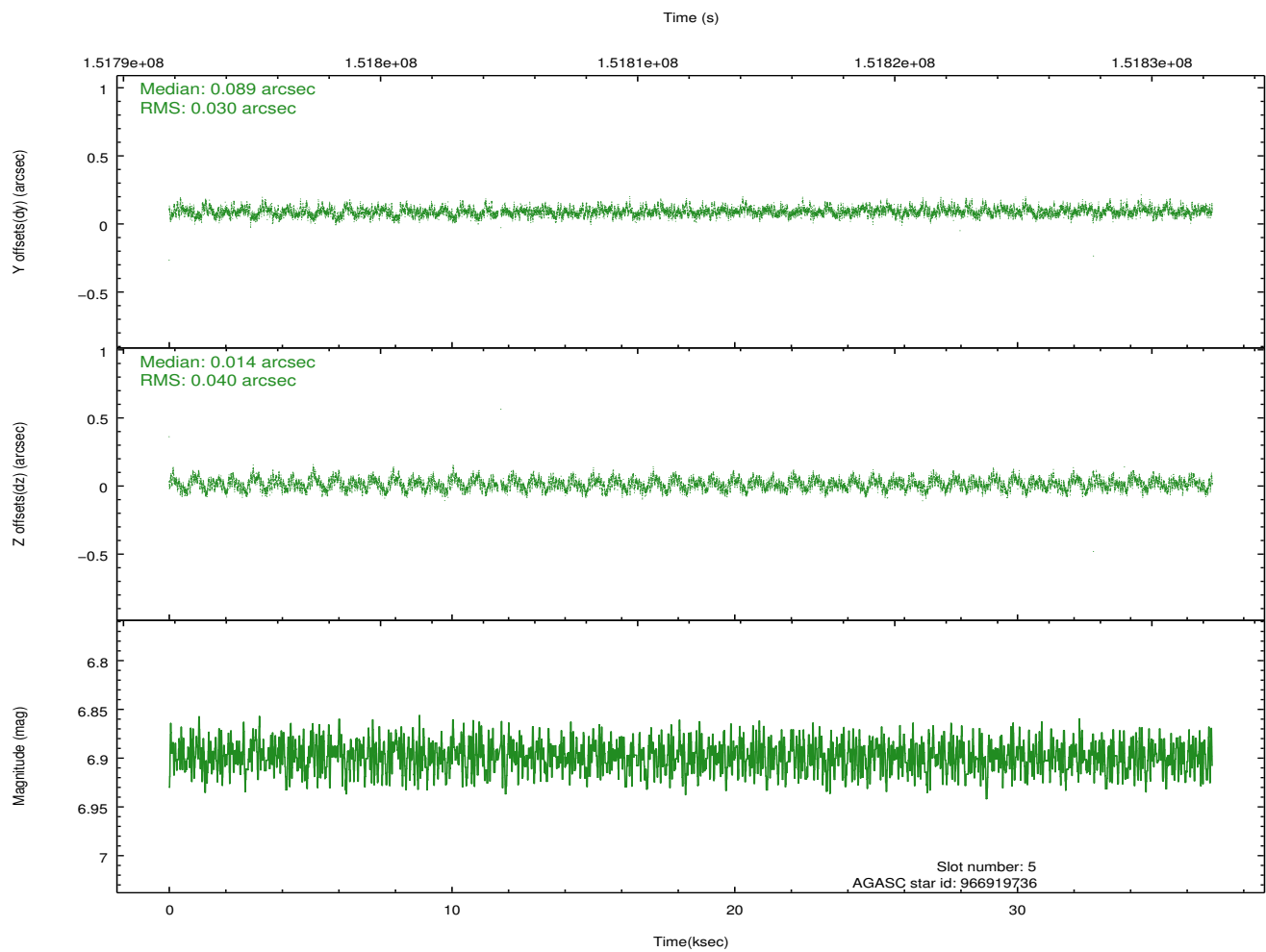
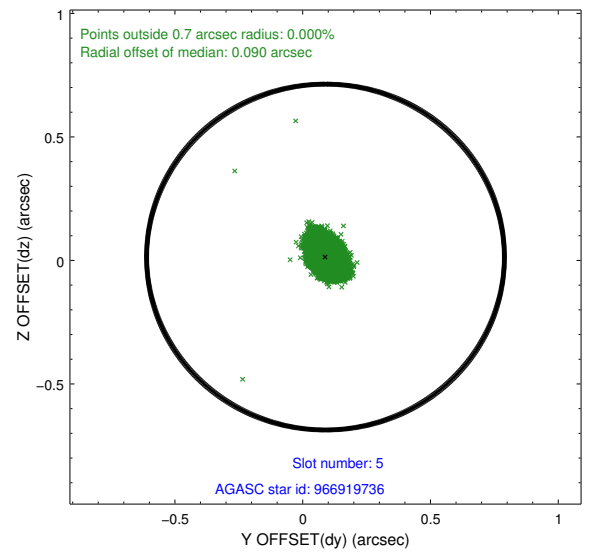
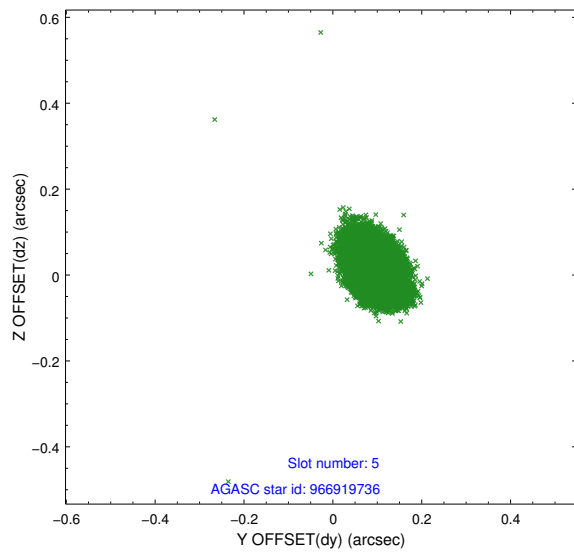
2.4.1 Slot 3



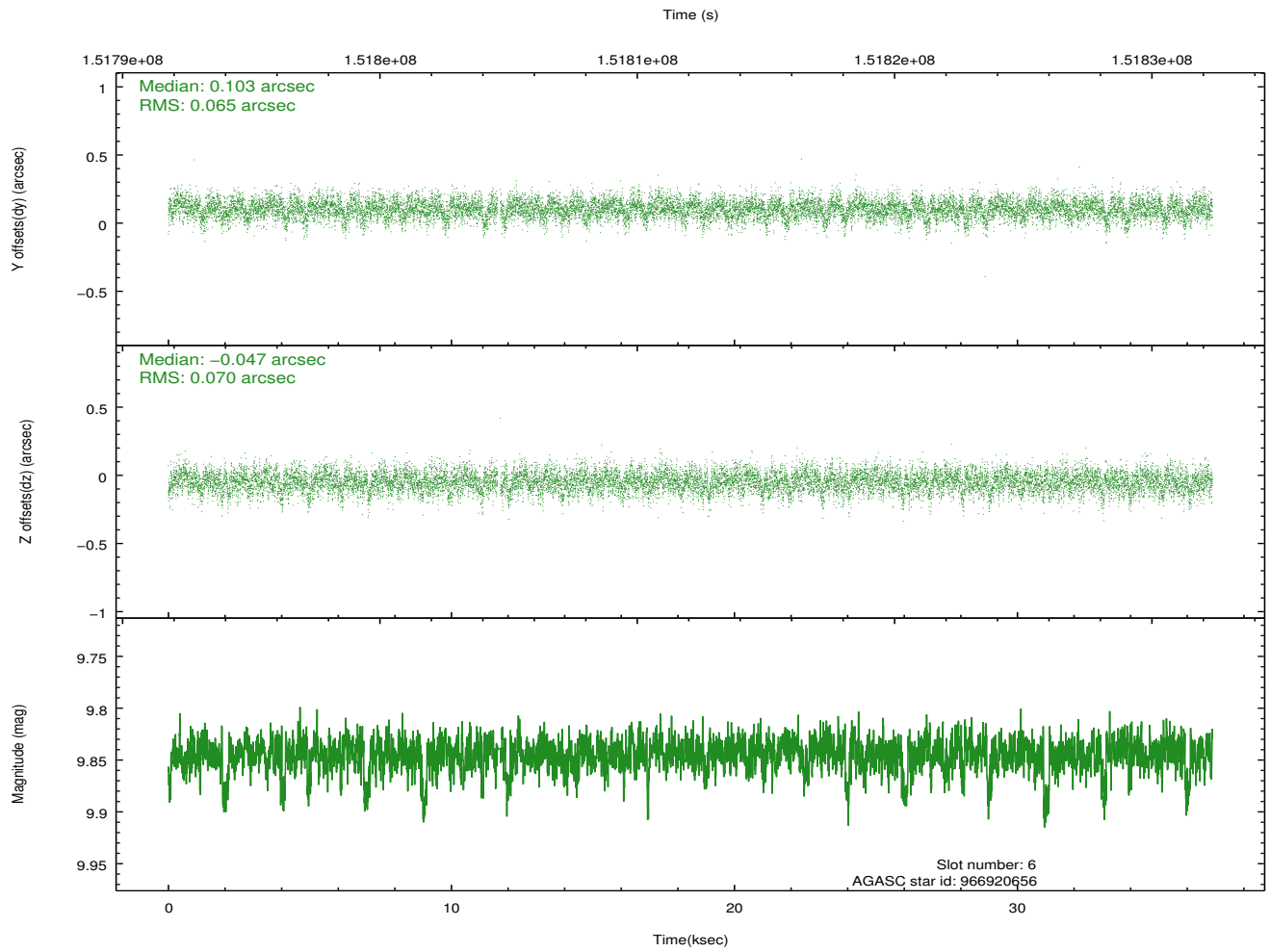
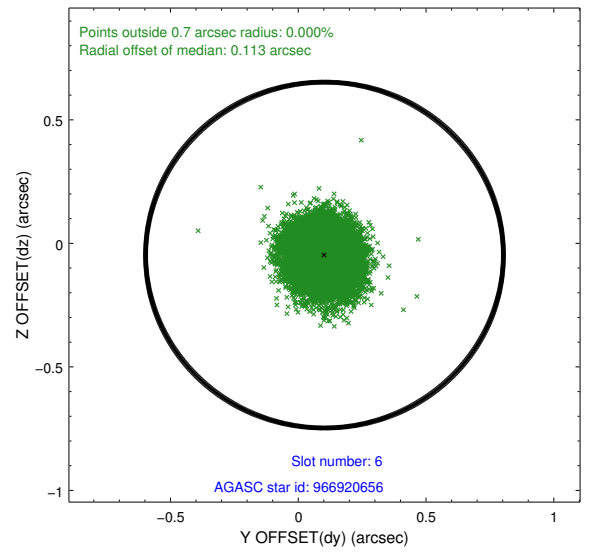
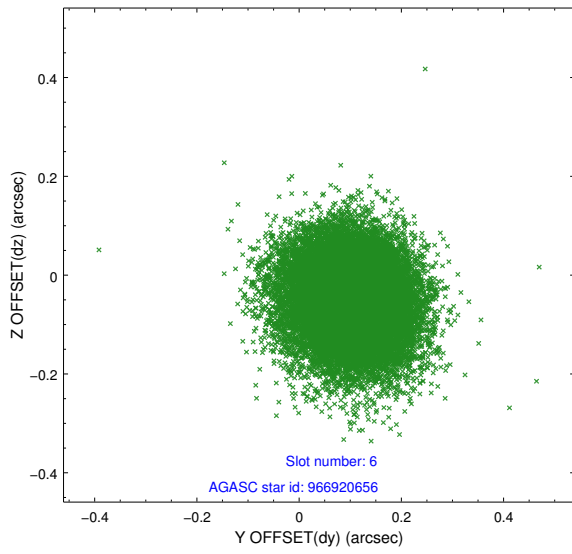
2.4.2 Slot 4



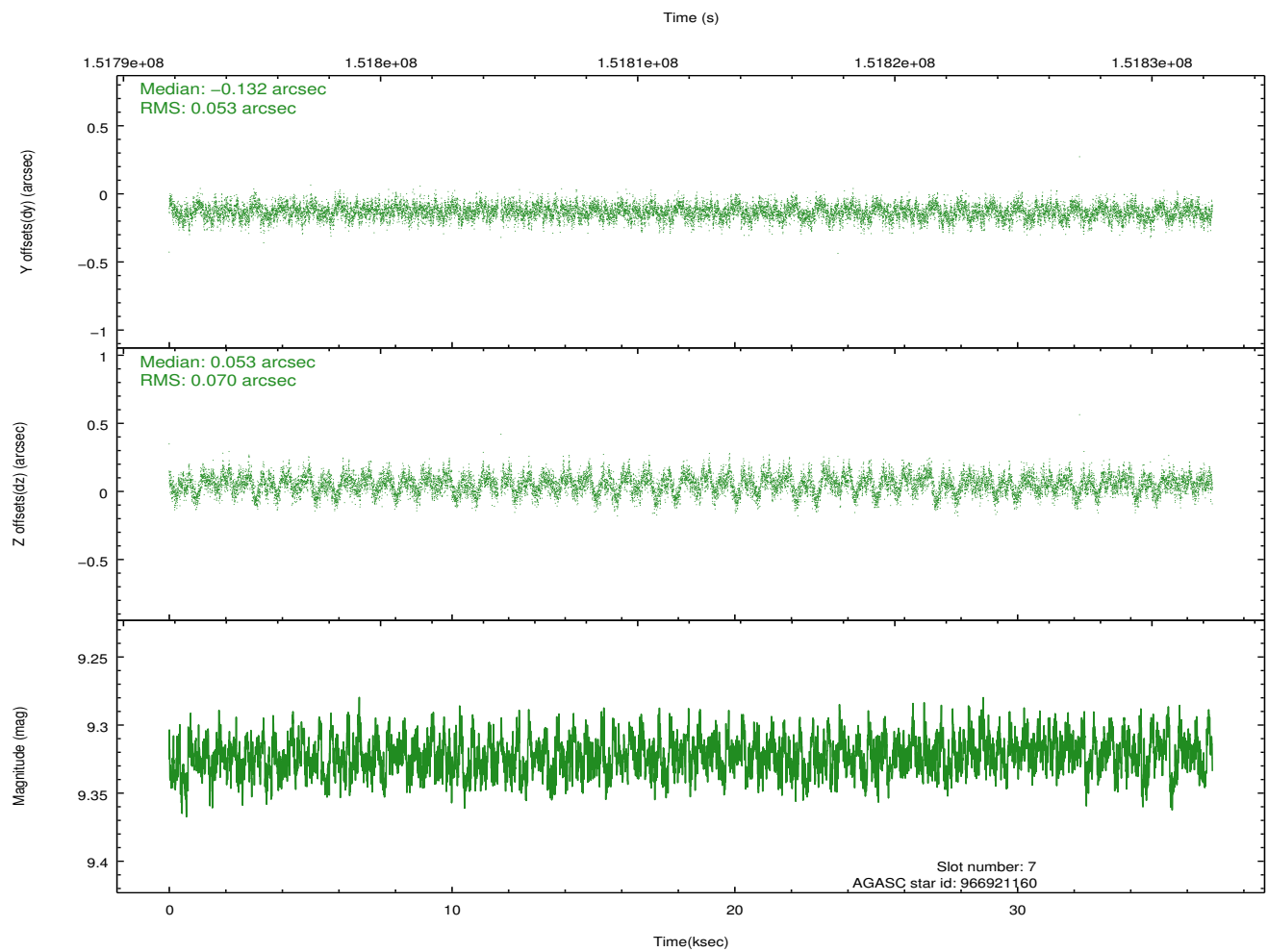
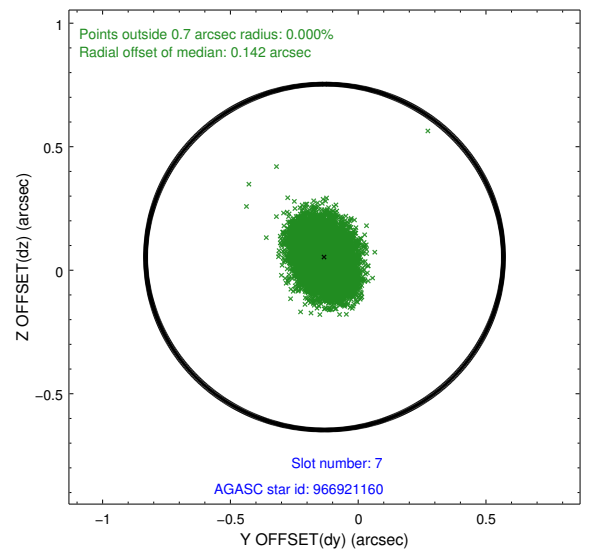
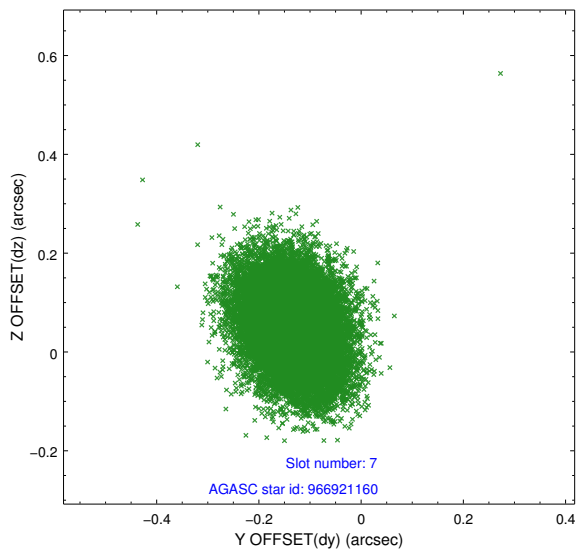
2.4.3 Slot 5



2.4.4 Slot 6

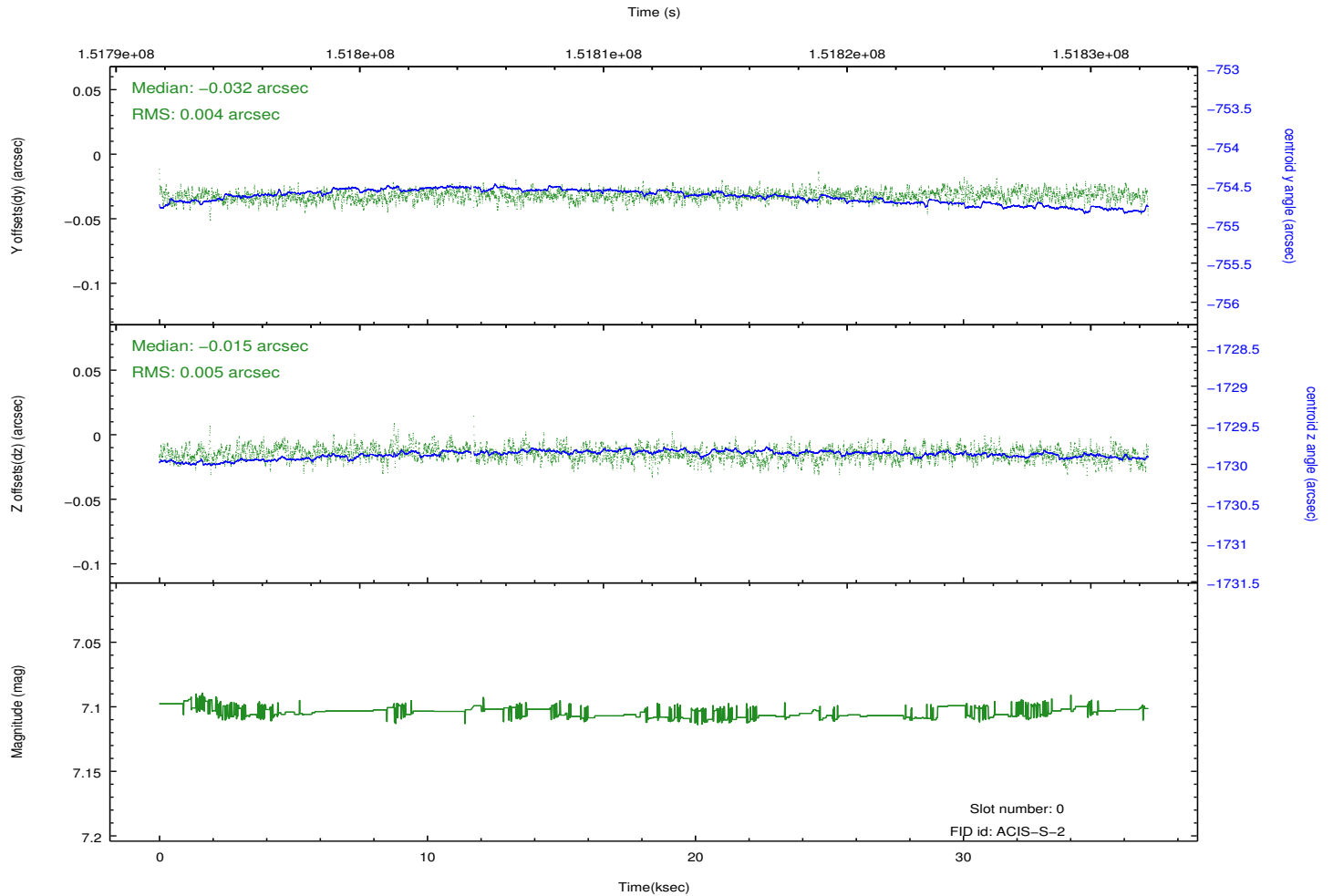
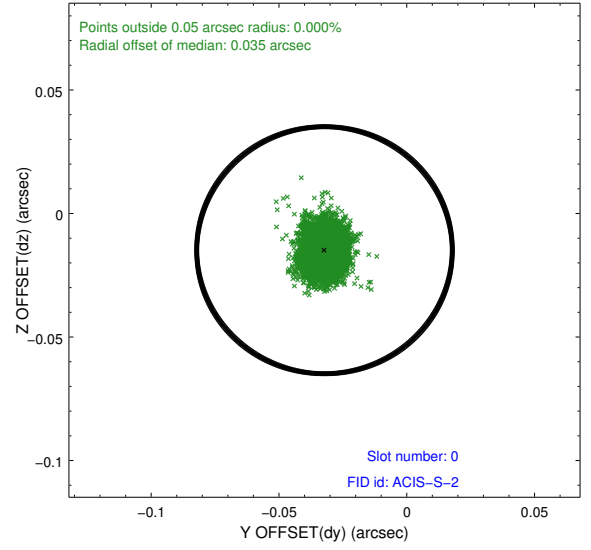
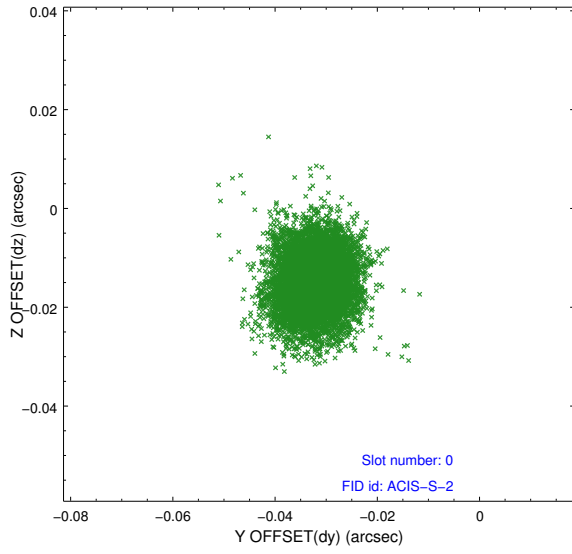


2.4.5 Slot 7

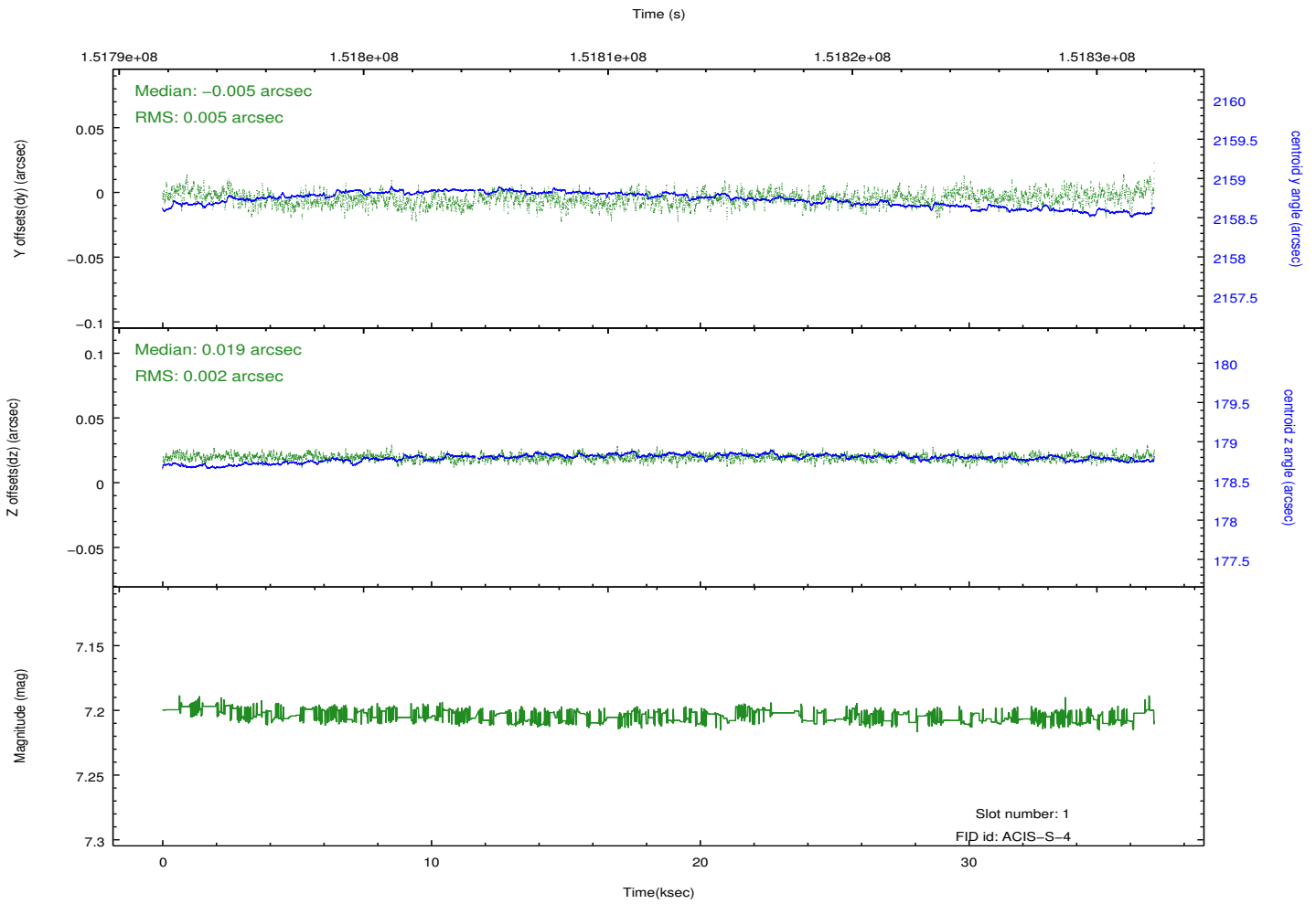
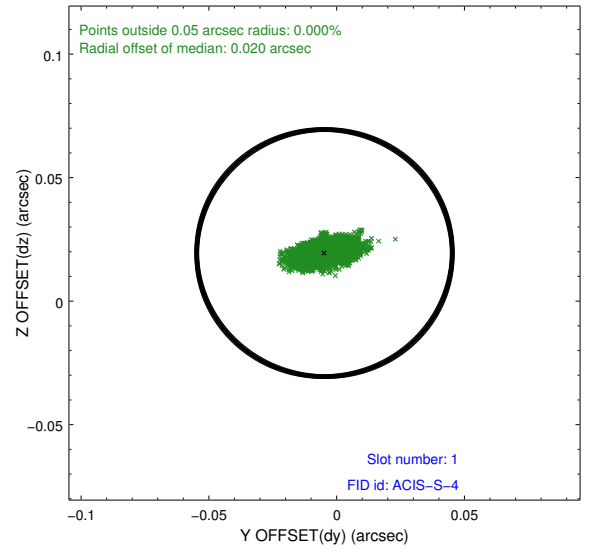
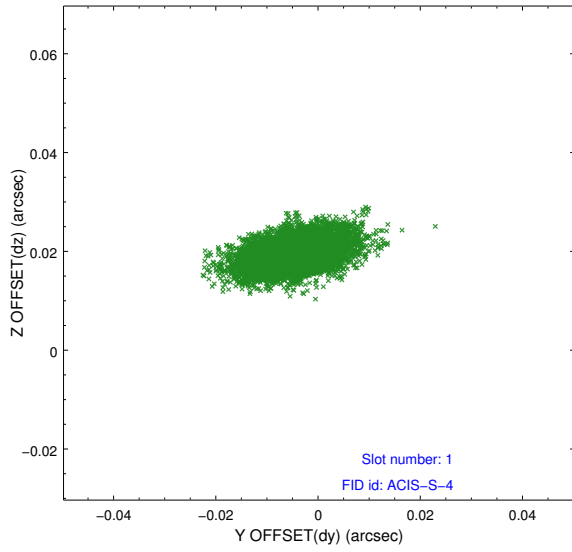


2.5 FID Slots

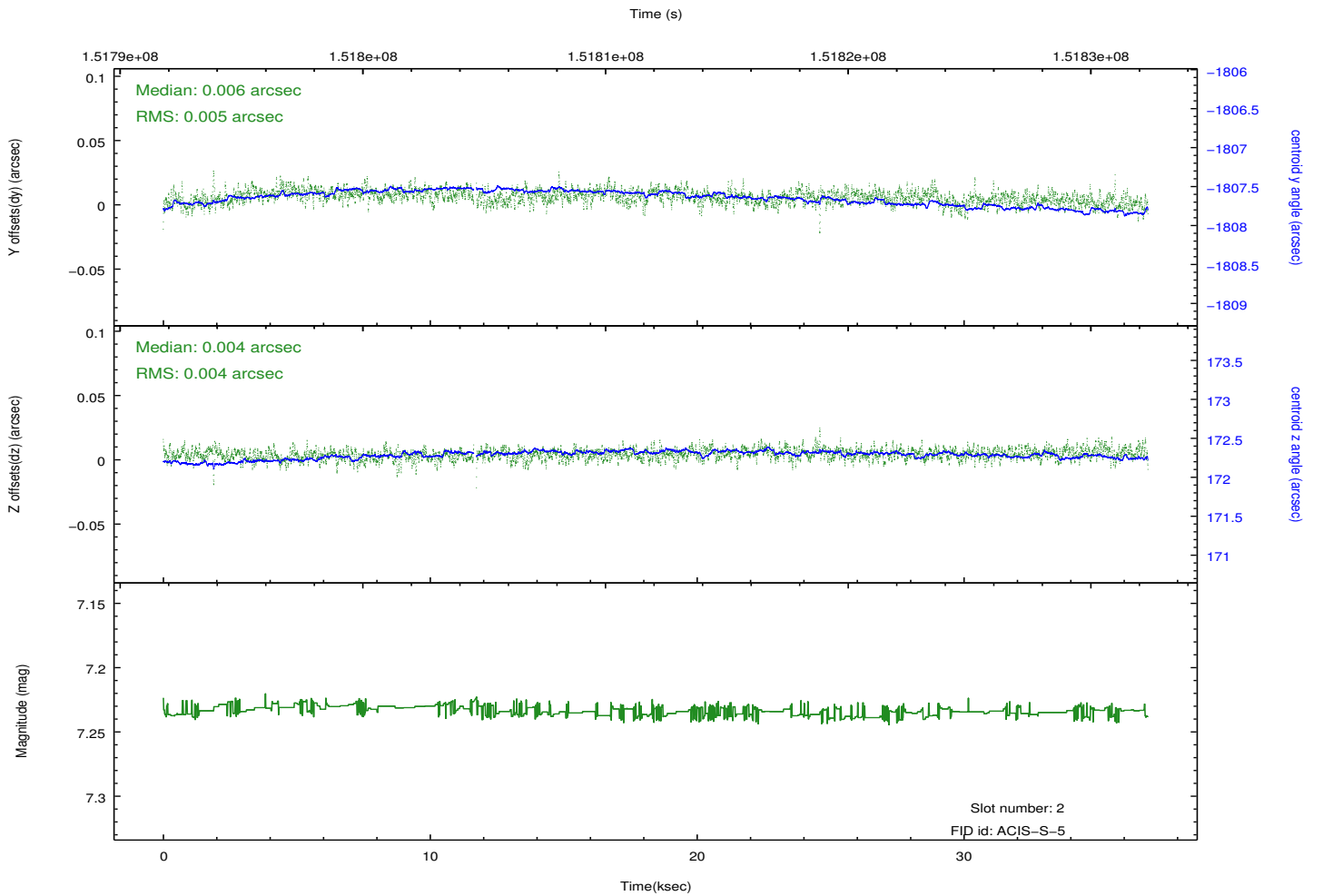
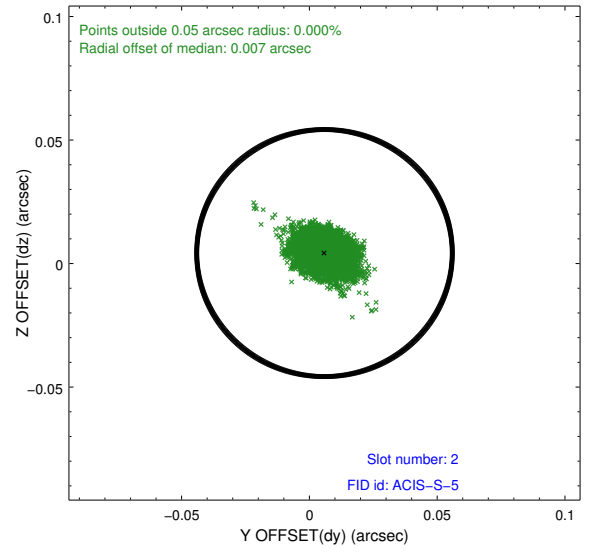
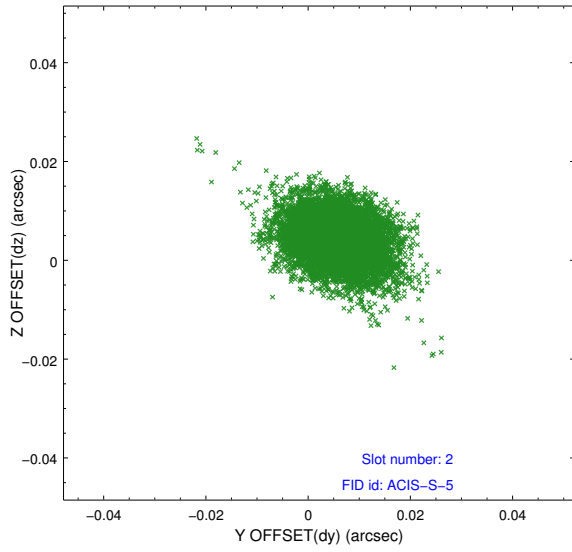
2.5.1 Slot 0



2.5.2 Slot 1



2.5.3 Slot 2



A Summary

A.1 Status

V&V Scientist	Jen Lauer
V&V Date (YYYY-MM-DD)	2012.10.25
V&V Edition	1
V&V Disposition and Status	OK
V&V Charge Time	36.789

A.2 Comments