

# V&V Reference Report

## L2 ASCDS Version : 8.5.1.1

Observation 3144 - L2 Version 3  
Chandra X-Ray Center

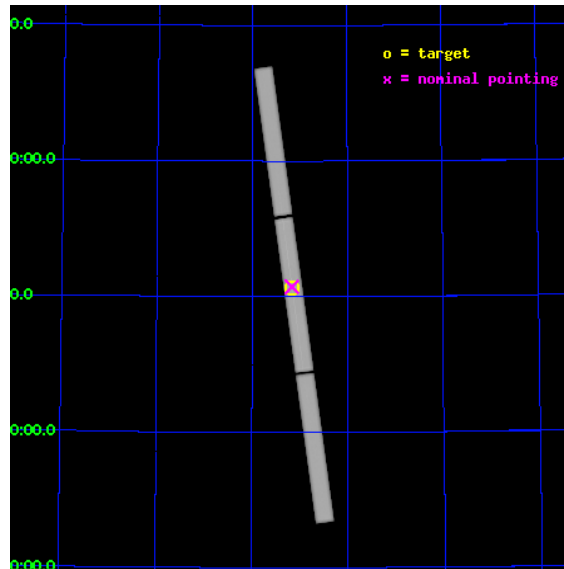
L2 Processing Date : Jan 17 2013

## Contents

<b>1</b>	<b>Front</b>	<b>2</b>
<b>2</b>	<b>OBI</b>	<b>3</b>
2.1	OBI . . . . .	3
2.1.1	Images . . . . .	3
2.1.2	Parameters . . . . .	4
2.1.3	Events . . . . .	4
2.2	Compared Parameters . . . . .	5
2.3	Aspect . . . . .	6
2.4	Star Slots . . . . .	9
2.4.1	Slot 3 . . . . .	9
2.4.2	Slot 4 . . . . .	10
2.4.3	Slot 5 . . . . .	11
2.4.4	Slot 6 . . . . .	12
2.4.5	Slot 7 . . . . .	13
2.5	FID Slots . . . . .	14
2.5.1	Slot 0 . . . . .	14
2.5.2	Slot 1 . . . . .	15
2.5.3	Slot 2 . . . . .	16
<b>3</b>	<b>Gratings</b>	<b>17</b>
3.1	LETG Arm . . . . .	17
<b>A</b>	<b>Summary</b>	<b>19</b>
A.1	Status . . . . .	19
A.2	Comments . . . . .	19

# 1 Front

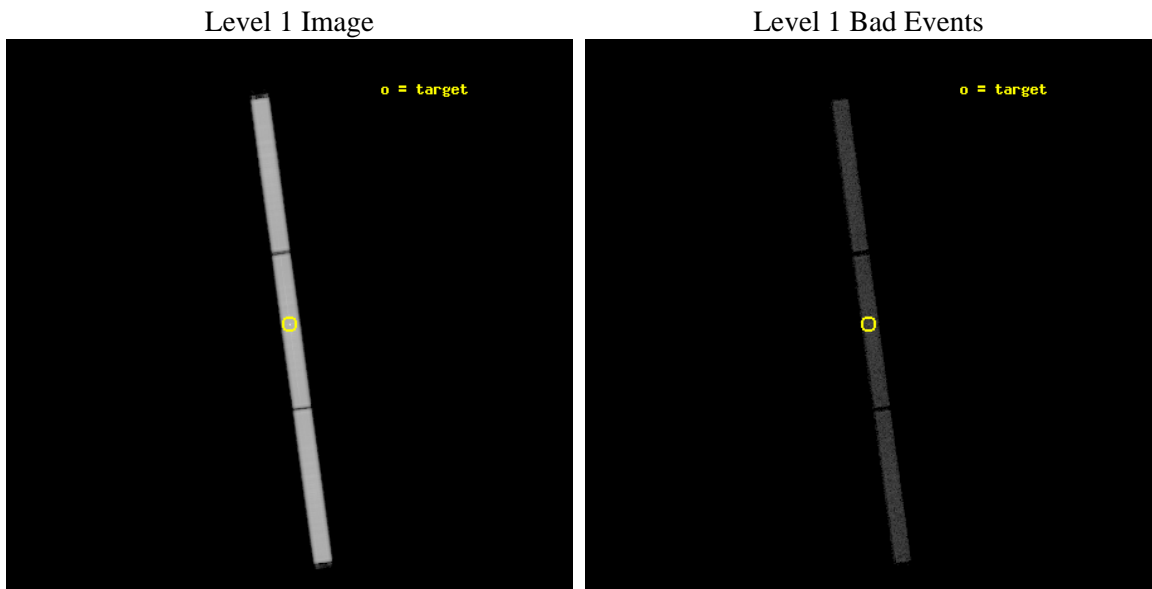
seq_num	700583	Sequence number
obs_id	3144	Observation id
title	SOFT X-RAY EMISSION AND ABSORPTION IN NGC 4051	Proposal title
observer	Prof Mariano Mendez	Principal investigator
object	NGC 4051	Source name
ra_targ	180.79	Observer's specified target RA [deg]
dec_targ	44.531444	Observer's specified target Dec [deg]
ra_nom	180.79111001312	Nominal RA [deg]
dec_nom	44.536099322489	Nominal Dec [deg]
roll_nom	82.089443596271	Nominal Roll [deg]
revision	3	Processing version of data
ontime	92064.73494789	[s]
livetime	91447.307215072	Ontime multiplied by DTCOR
l2events	5012716	Number of level 2 events



## 2 OBI

### 2.1 OBI

#### 2.1.1 Images



## 2.1.2 Parameters

obi_num	1	Obi number	sched_exp_time	92500.000000	[s] Scheduled observation exposure time
ascdsver	8.5.1.1	Processing system revision	ontime	92064.73494789	[s]
caldbver	4.5.5	&#160	l1events	6884118	Number of level 1 events
date	2013-01-17T19:56:19	Date and time of file creation			
revision	3	Processing version of data			

## 2.1.3 Events

### Level 1 Events

	<b>segment 1</b>	<b>segment 2</b>	<b>segment 3</b>
level 1 events	2314342	2312457	2257319
rejected events	15549	15641	15585
rejected %	0%	0%	0%

## 2.2 Compared Parameters

Parameter	Planned	Actual	Parameter	Planned	Actual
Instrument	HRC	HRC	Obspar format version number	7	7
Detector	HRC-S	HRC-S			
Grating	LETG	LETG			
Data mode	OBSERVING	OBSERVING	Obspar file type	PREDICTED	ACTUAL
Observation mode	POINTING	POINTING			
[deg] Pointing RA	180.807998	180.791110013116	Obspar update status	NONE	UPDATED
[deg] Pointing Dec	44.510118	44.53609932248894			
[deg] Pointing Roll	82.010269	82.08944359627095			
[mm] SIM focus pos	-1.429586	-1.428180813131781			
[mm] SIM defocus	0.1037507710433287	0.1051558262725154			
[mm] SIM translation stage pos	250.455976	250.4635187648994			
[mm] SIM translation stage offset	0	-0.007540371344731511			
[s] Observation start time (MET)	126208948.184000	126207641.56092			
Observation start date	2001-12-31T18:01:24	2001-12-31T17:40:41			
[s] Observation end time (MET)	126301448.184000	126301906.20221			
Observation end date	2002-01-01T19:43:04	2002-01-01T19:51:46			

## 2.3 Aspect

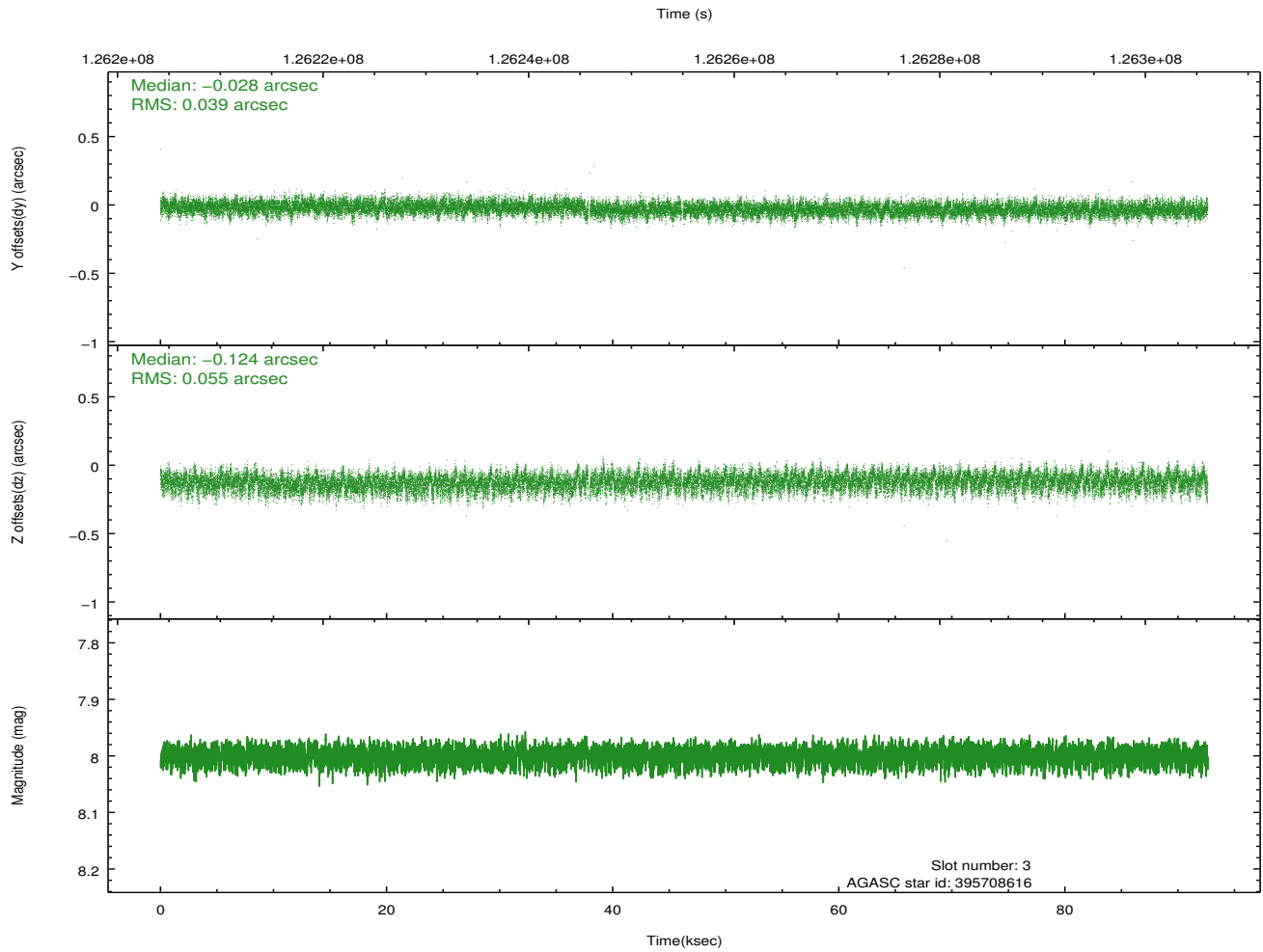
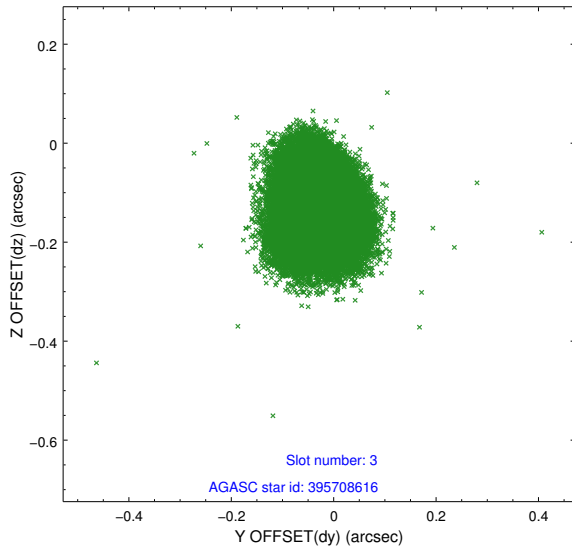


### Slot Statistics

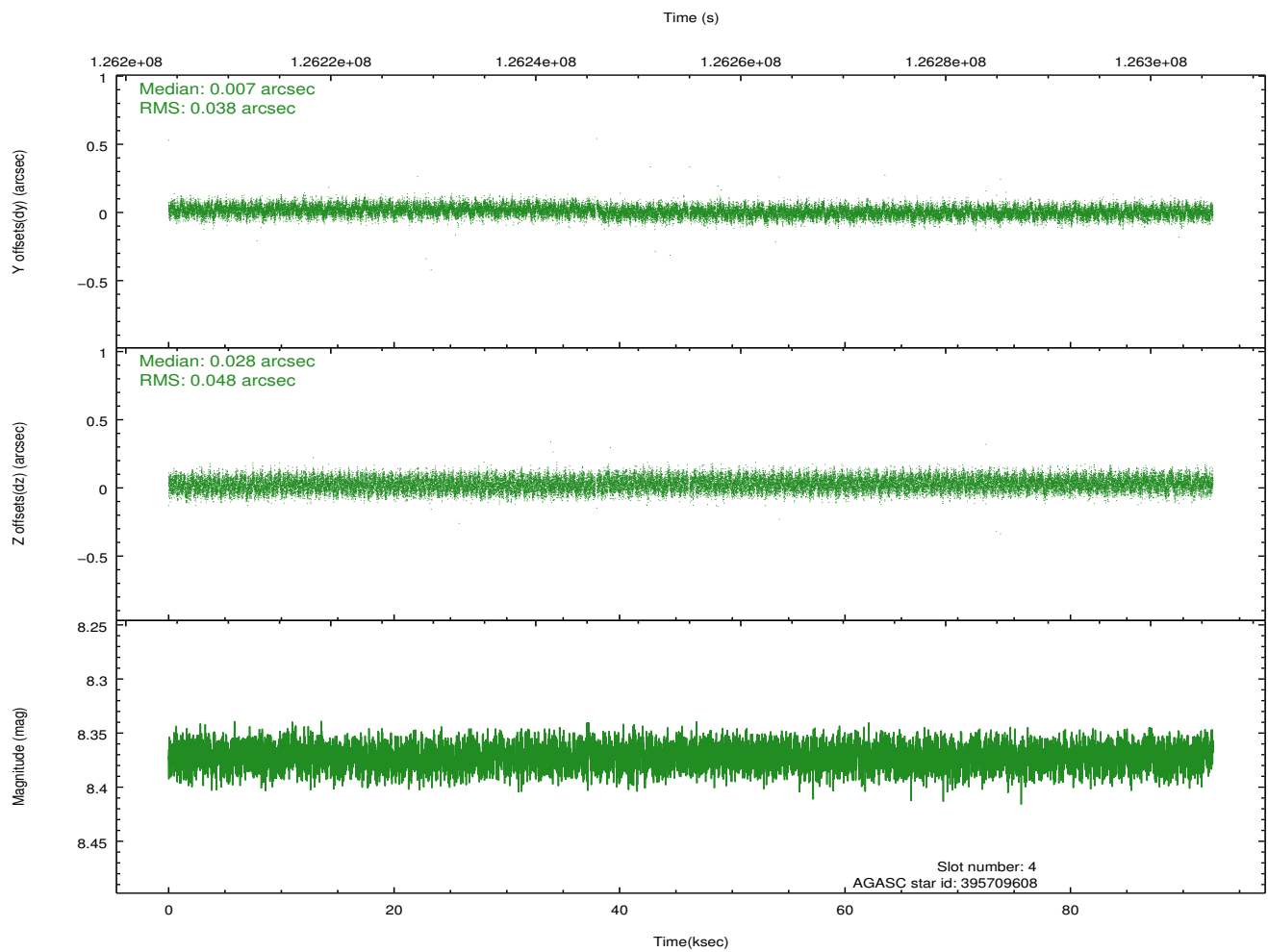
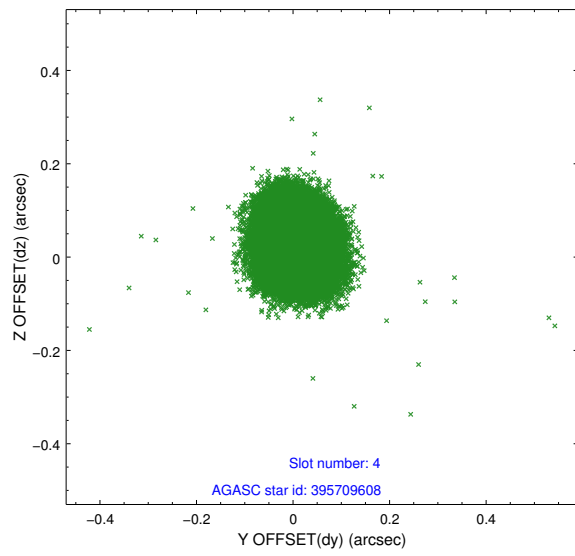
slot	status	id	mag	n_pts	med_dy	med_dz	dr1	dr2	ra	dec	mean_y	mean_z
0	FID	HRC-S-1	7.01	22531	0.154	-0.128	0.010	0.028	0.000000	0.000000	-1158.07	-455.04
1	FID	HRC-S-2	7.00	22531	0.083	-0.091	0.006	0.025	0.000000	0.000000	1241.49	-447.68
2	FID	HRC-S-3	7.03	22531	0.152	-0.083	0.009	0.024	0.000000	0.000000	-1160.73	574.51
3	GUIDE	395708616	8.00	45058	-0.028	-0.124	0.072	0.118	180.101872	44.630343	185.01	1852.59
4	GUIDE	395709608	8.37	45059	0.007	0.028	0.066	0.103	181.055130	44.450389	-123.18	-658.67
5	GUIDE	395710032	8.82	45050	-0.027	0.096	0.086	0.136	181.512910	44.376001	-217.60	-1862.22
6	GUIDE	395708696	8.87	45051	0.001	-0.020	0.083	0.136	180.383726	44.624291	258.96	1134.00
7	GUIDE	395707376	9.36	44943	-0.012	0.047	0.081	0.132	180.967983	44.858789	1300.55	-229.49

## 2.4 Star Slots

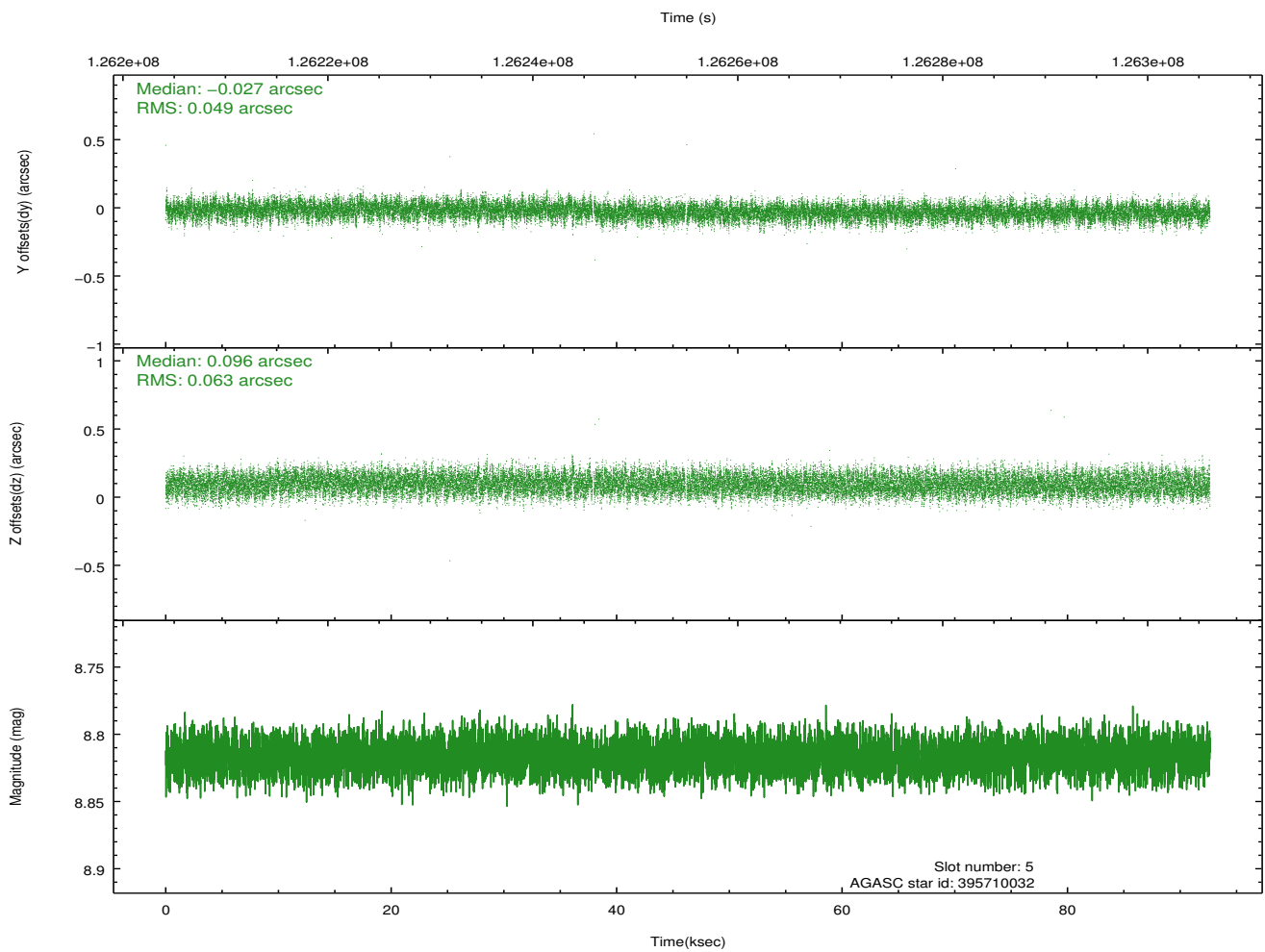
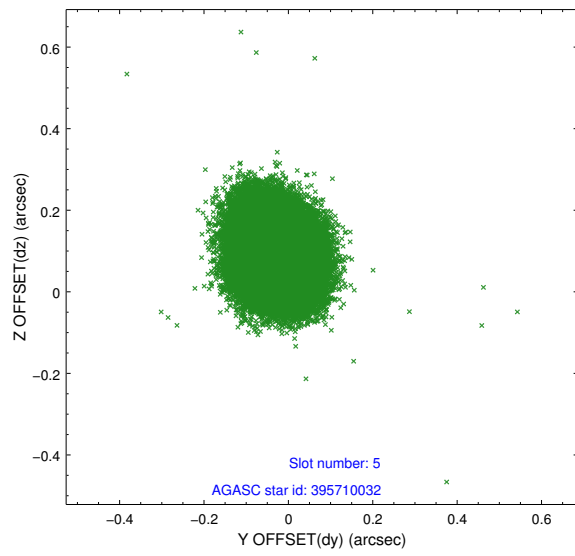
### 2.4.1 Slot 3



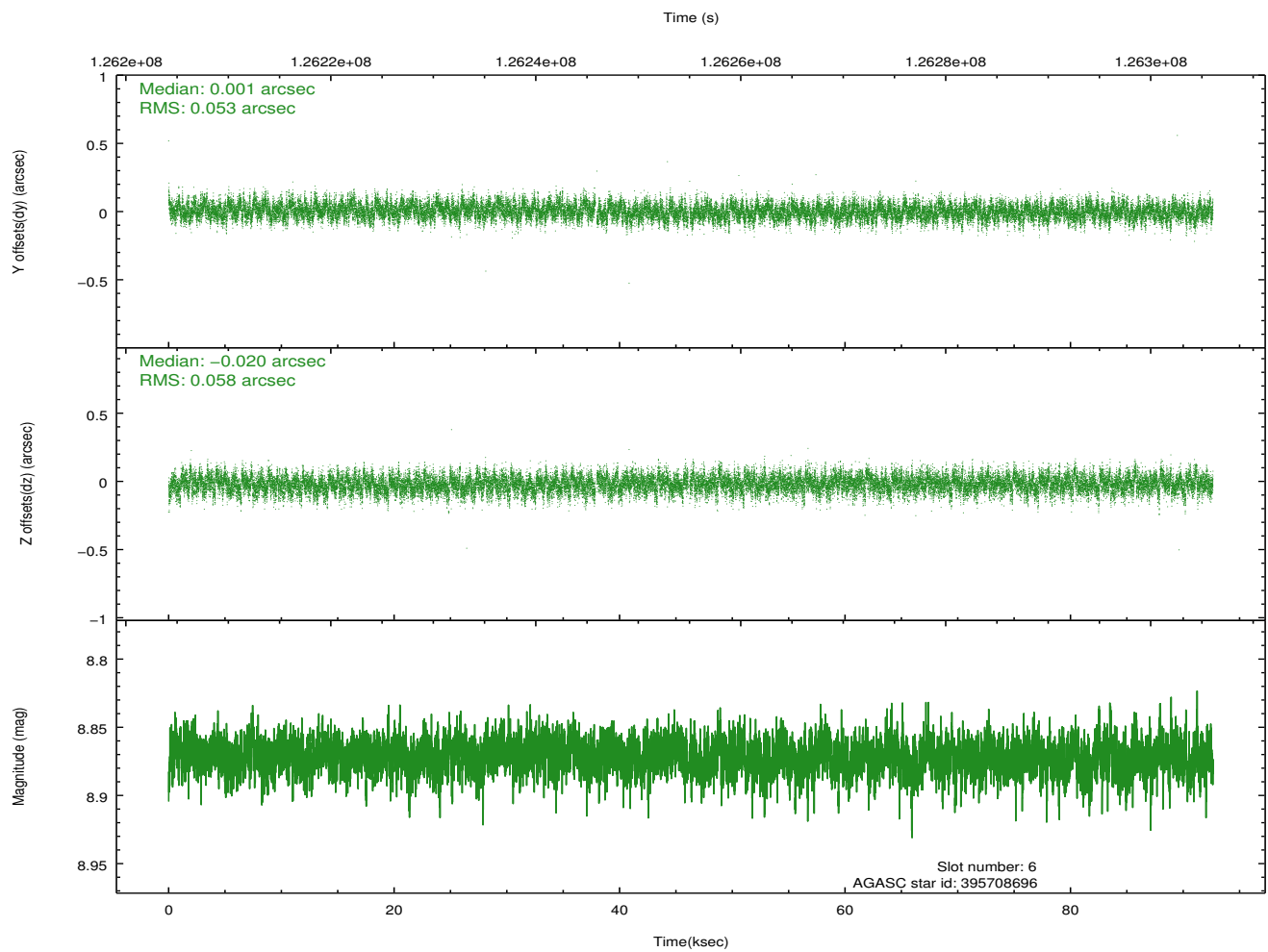
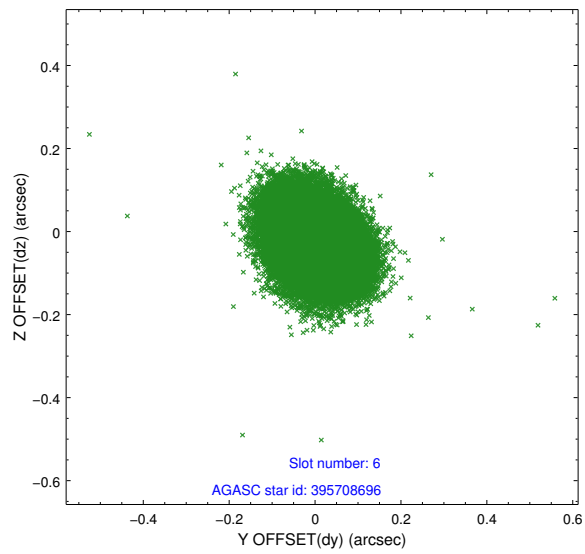
## 2.4.2 Slot 4



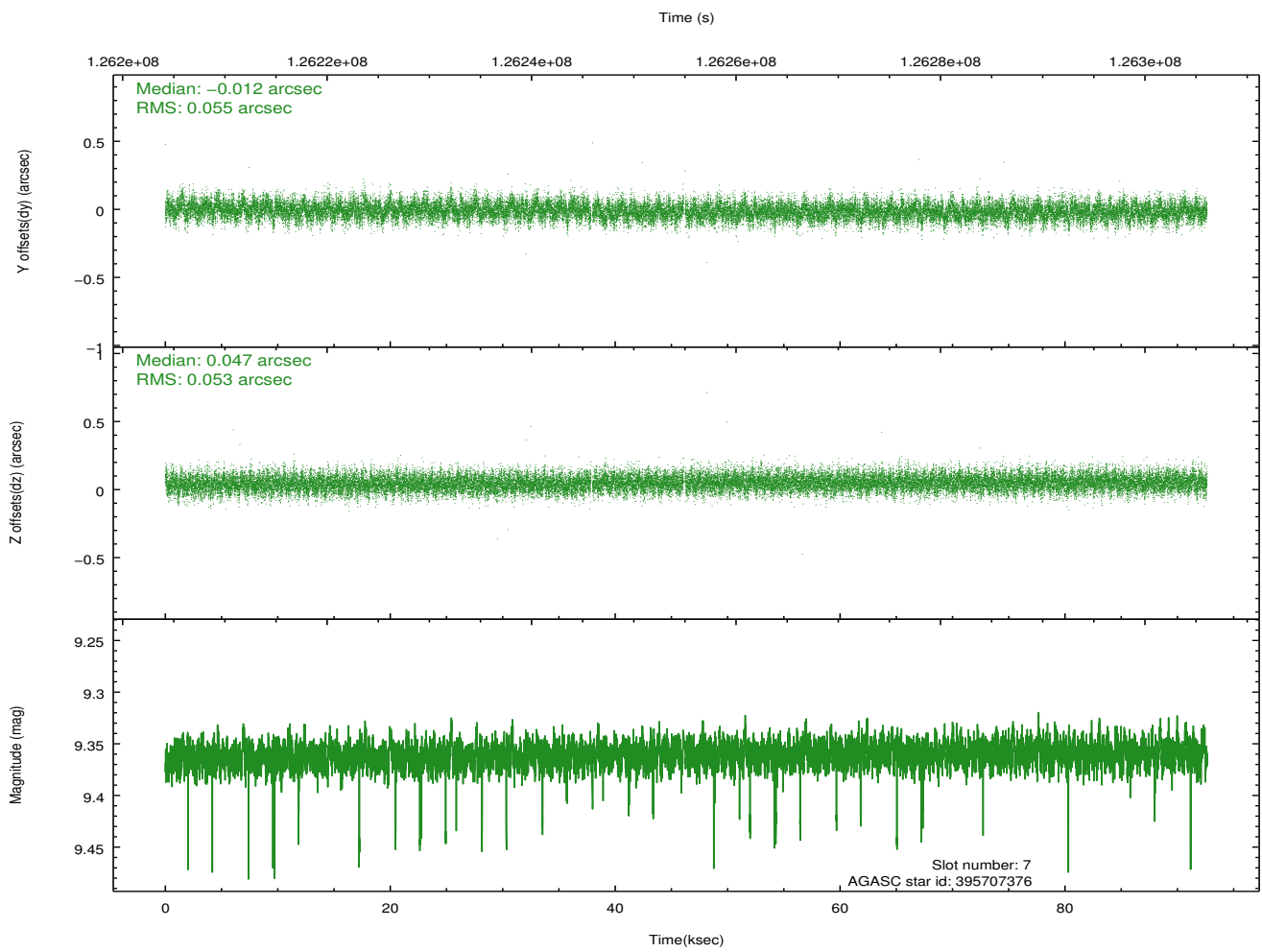
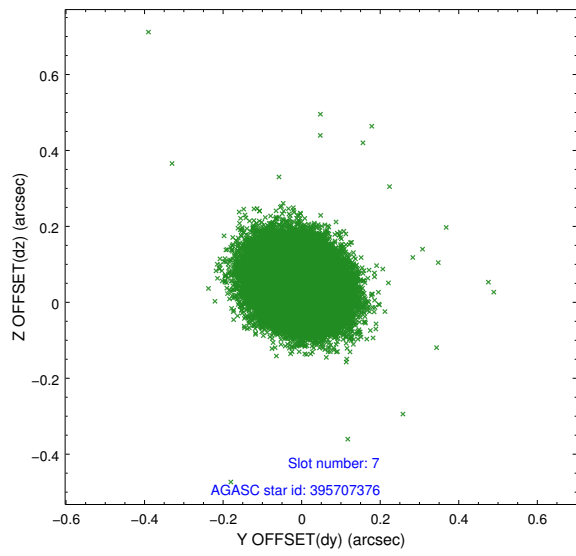
### 2.4.3 Slot 5



## 2.4.4 Slot 6

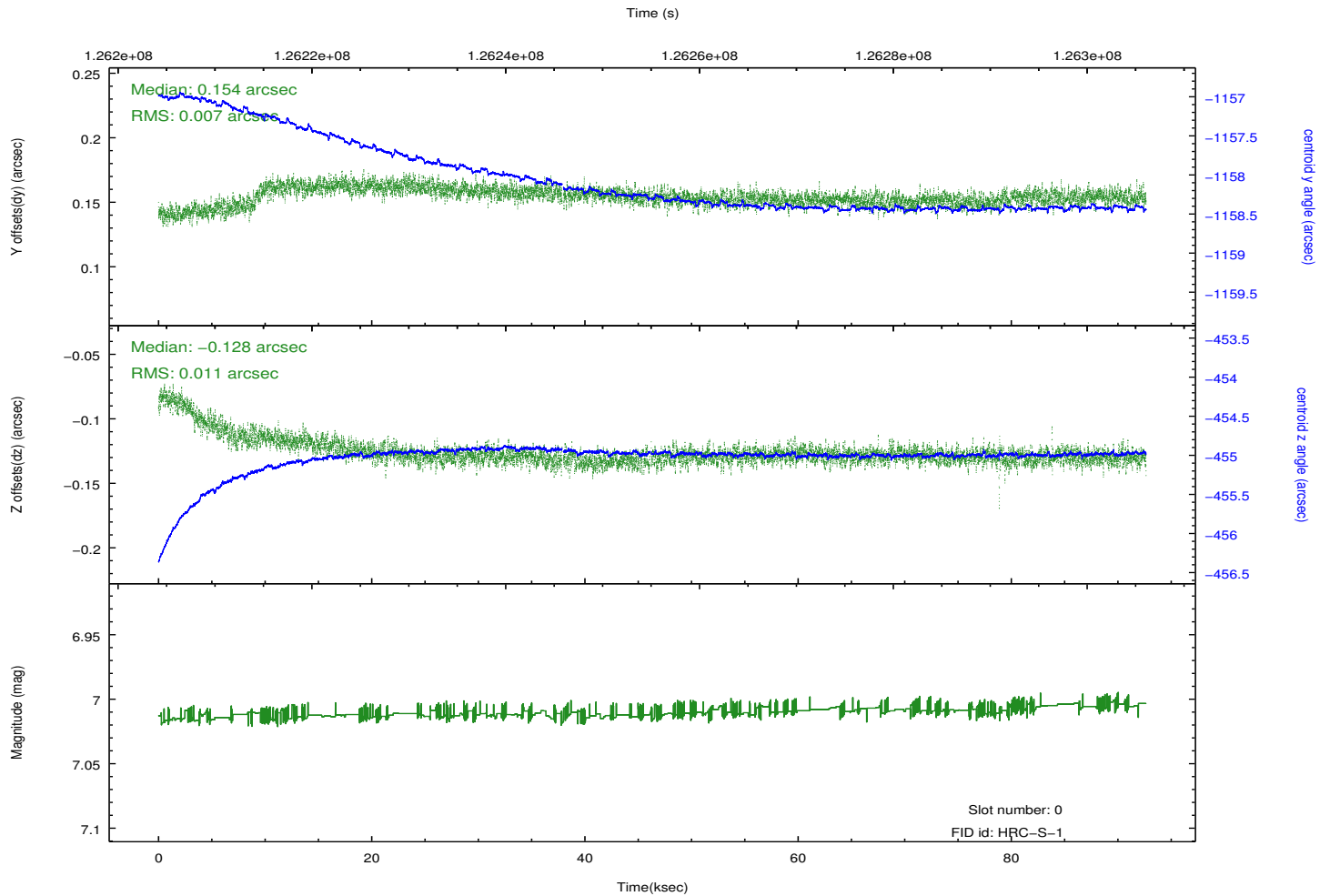
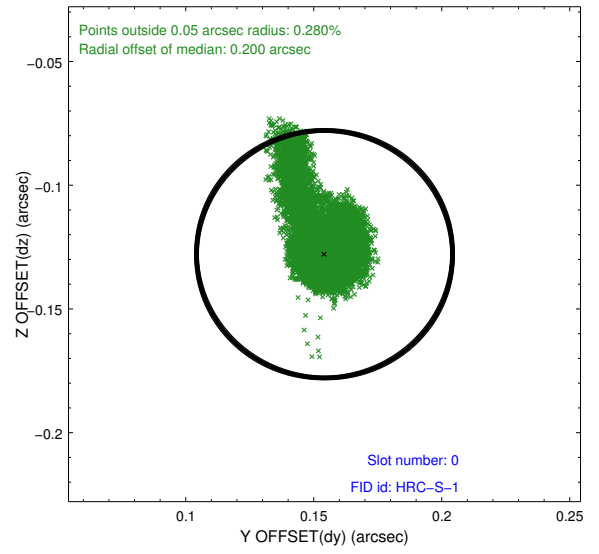
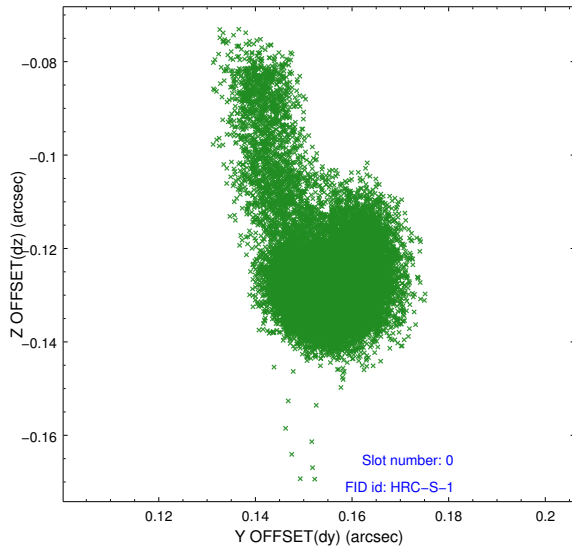


## 2.4.5 Slot 7

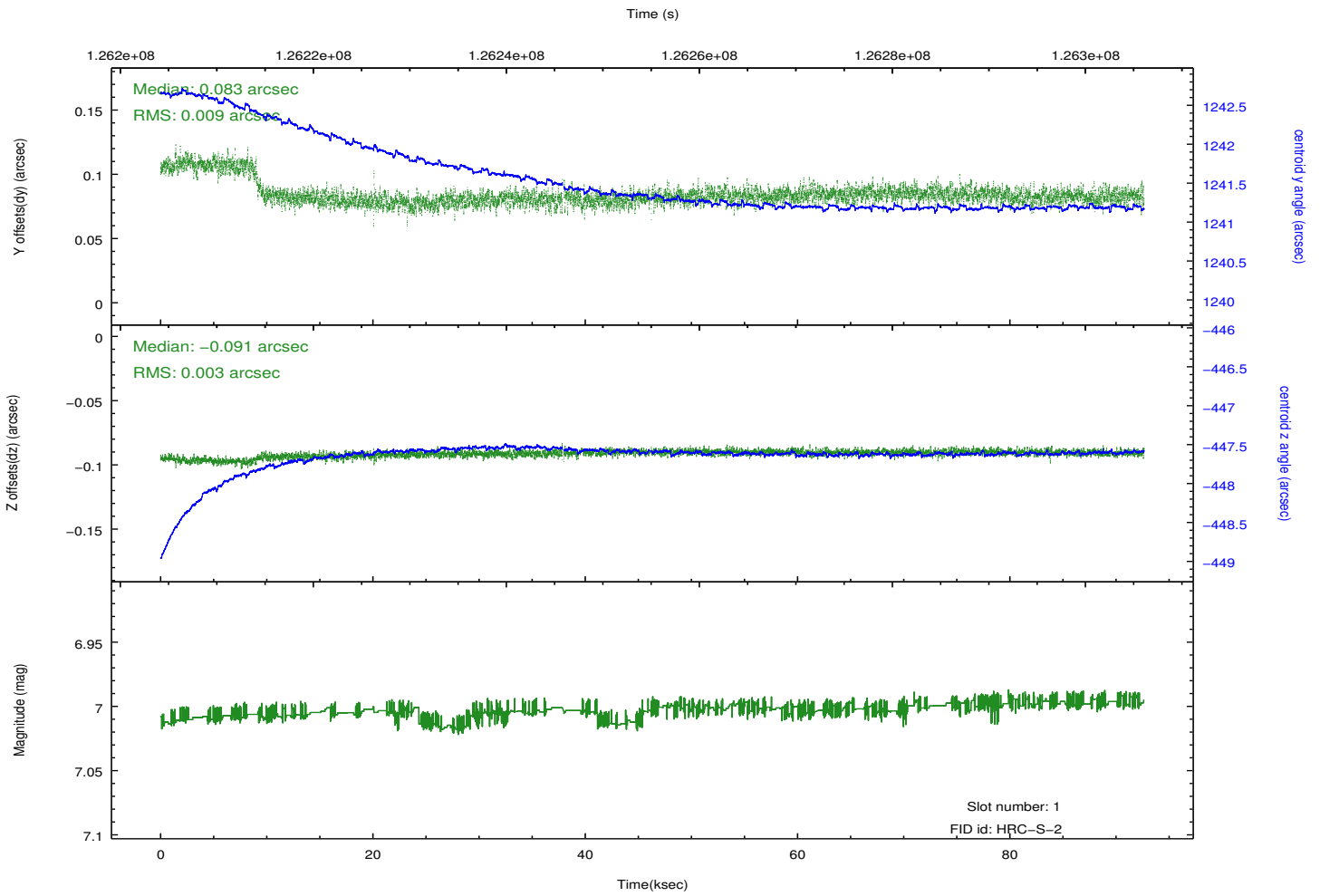
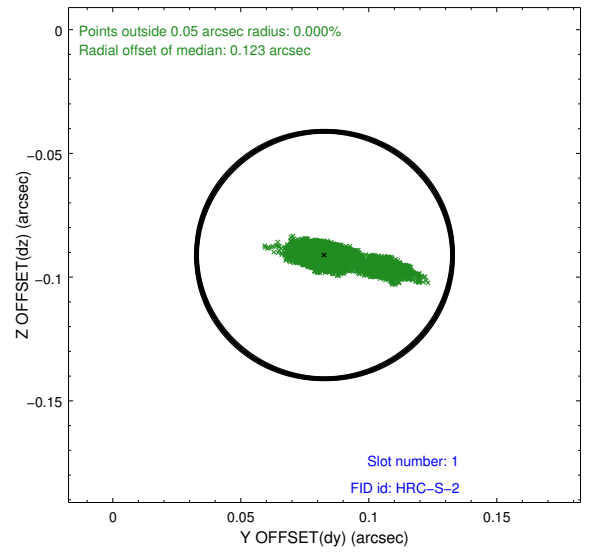
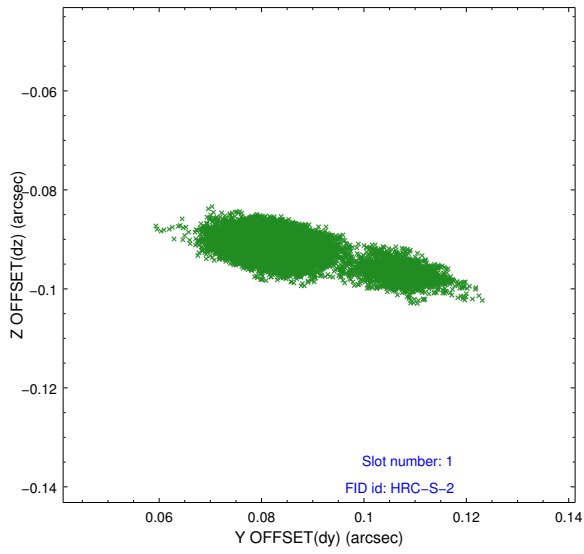


## 2.5 FID Slots

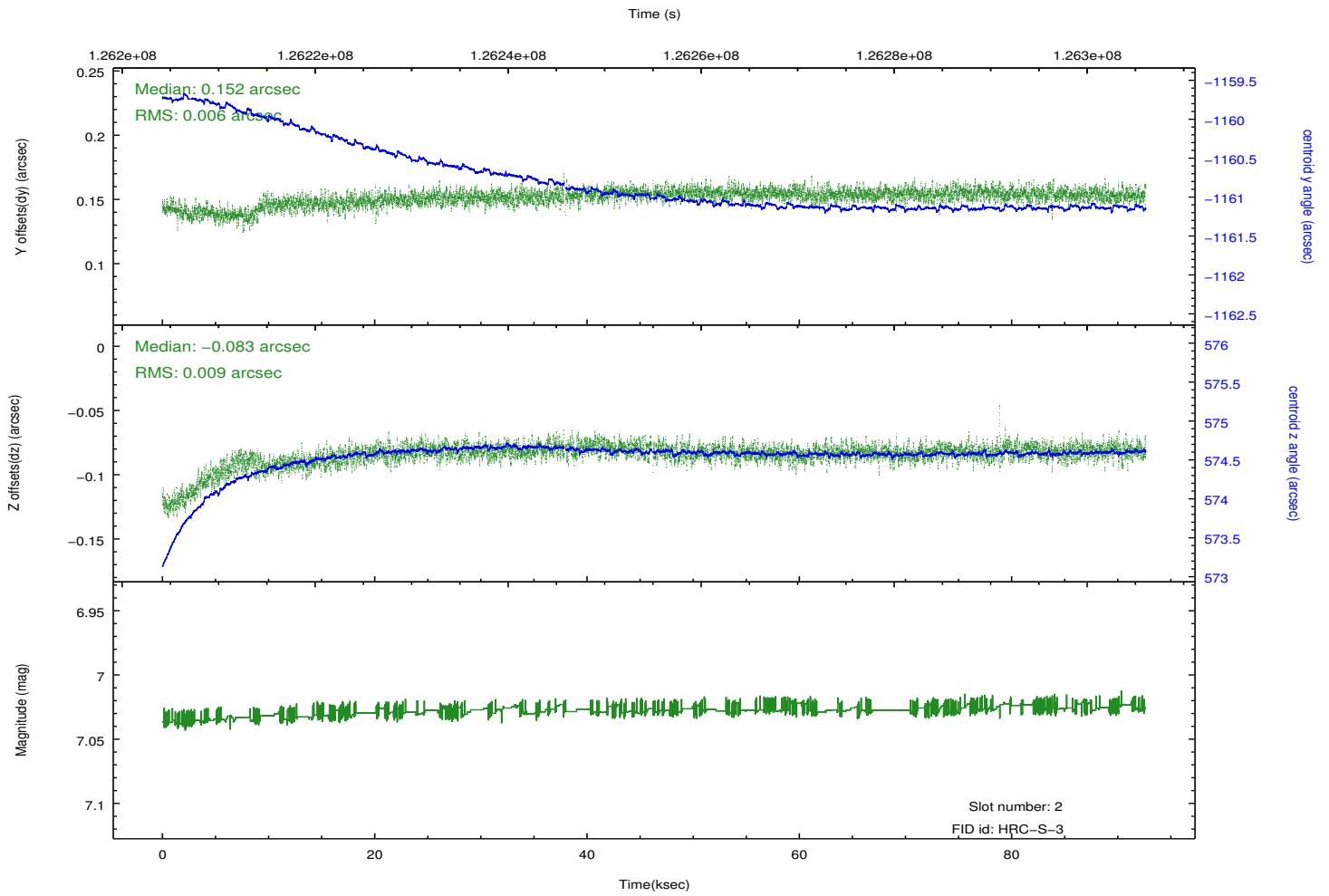
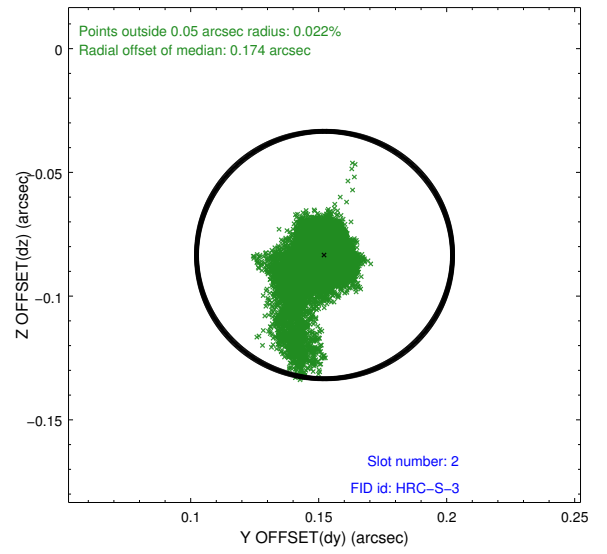
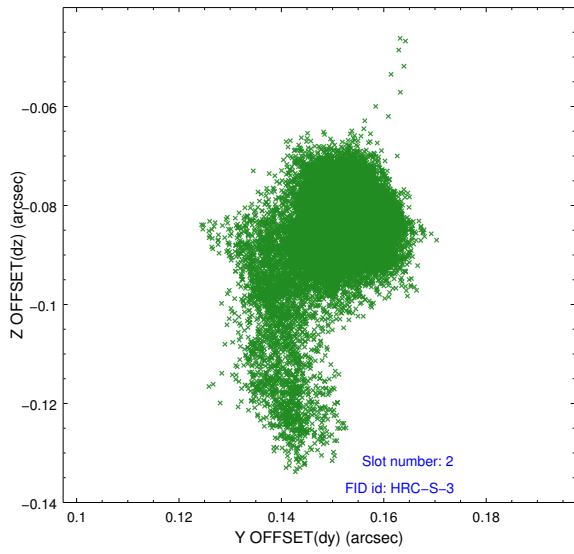
### 2.5.1 Slot 0



## 2.5.2 Slot 1

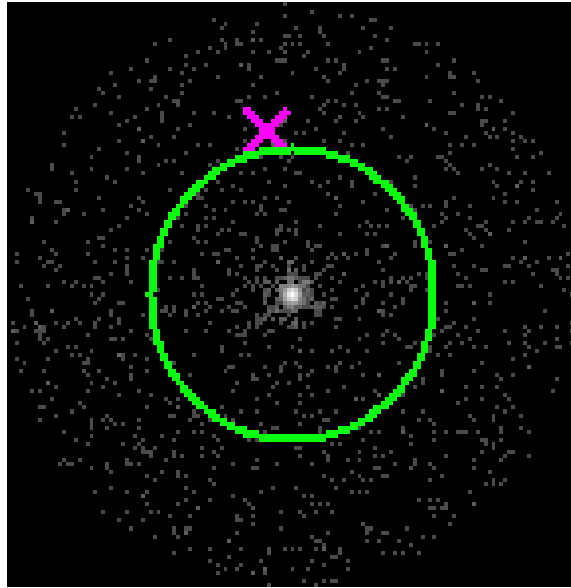


### 2.5.3 Slot 2

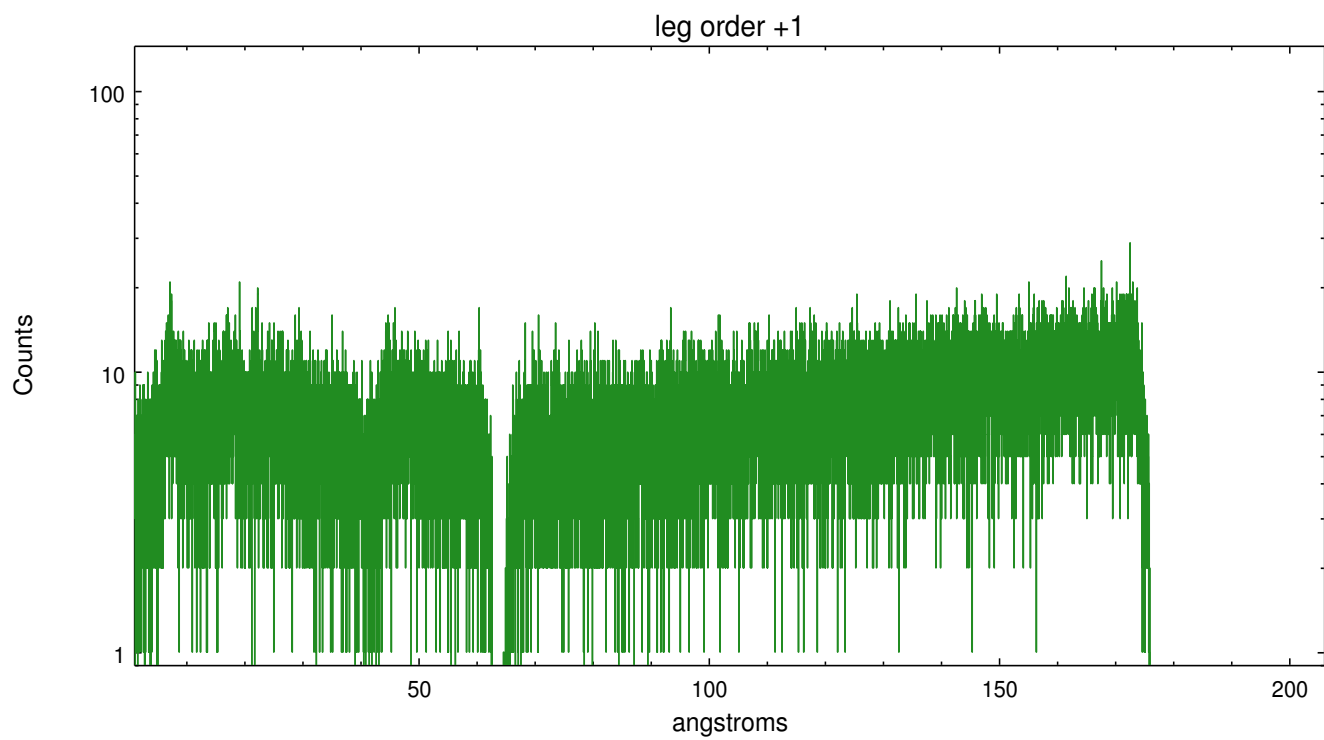
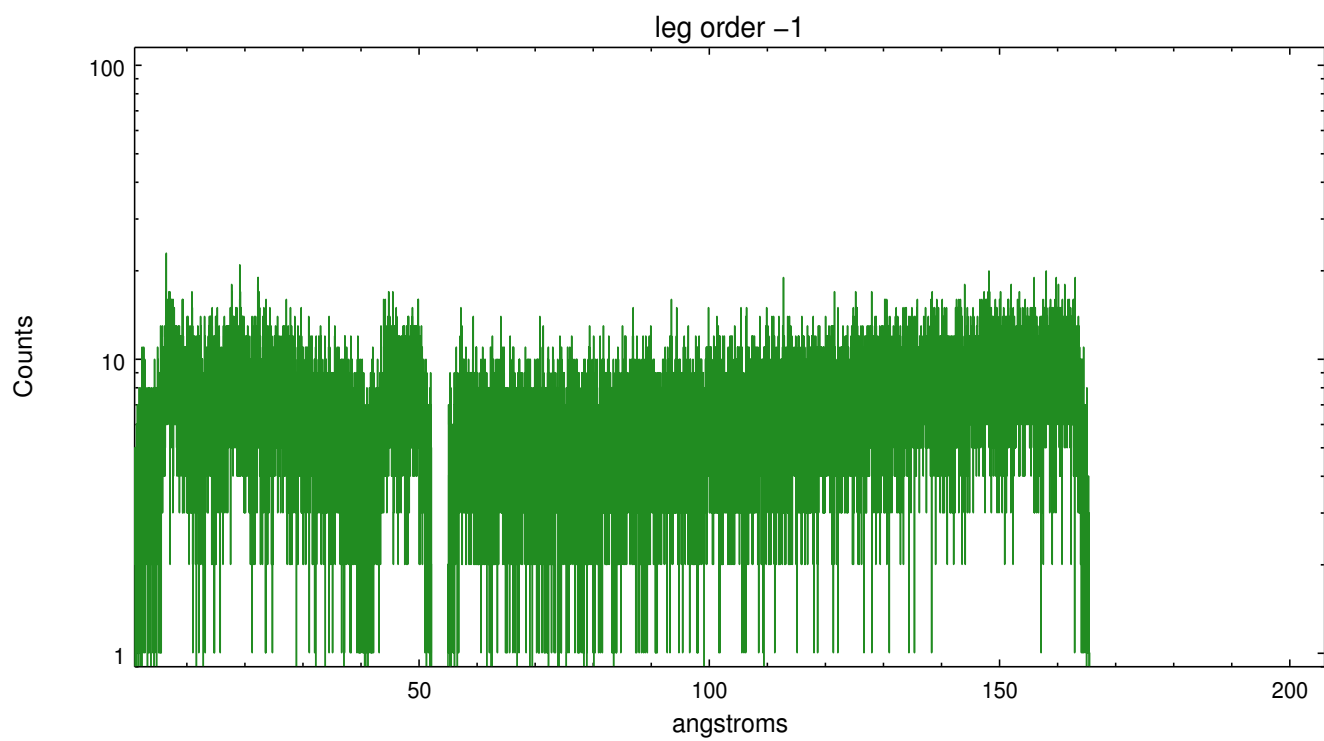


### 3 Gratings

#### 3.1 LETG Arm



LETG Zero Order



# A Summary

## A.1 Status

V&V Scientist	Joy Nichols
V&V Date (YYYY-MM-DD)	2013.01.24
V&V Edition	1
V&V Disposition and Status	OK
V&V Charge Time	92.034

## A.2 Comments