

V&V Reference Report

L2 ASCDS Version : 8.4.5

Observation 3194 - L2 Version 3
Chandra X-Ray Center

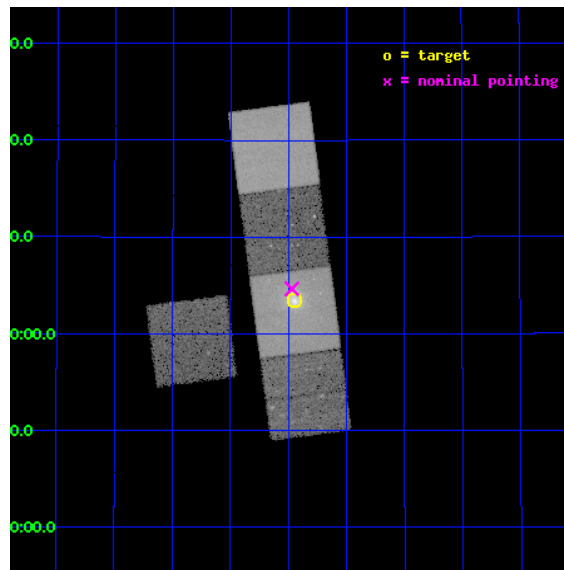
L2 Processing Date : Sep 27 2012

Contents

1	Front	2
2	OBI	3
2.1	OBI	3
2.1.1	Images	3
2.1.2	Bias	3
2.1.3	Parameters	4
2.1.4	Events	4
2.2	Compared Parameters	5
2.3	Aspect	6
2.4	Star Slots	9
2.4.1	Slot 3	9
2.4.2	Slot 4	10
2.4.3	Slot 5	11
2.4.4	Slot 6	12
2.4.5	Slot 7	13
2.5	FID Slots	14
2.5.1	Slot 0	14
2.5.2	Slot 1	15
2.5.3	Slot 2	16
A	Summary	17
A.1	Status	17
A.2	Comments	17

1 Front

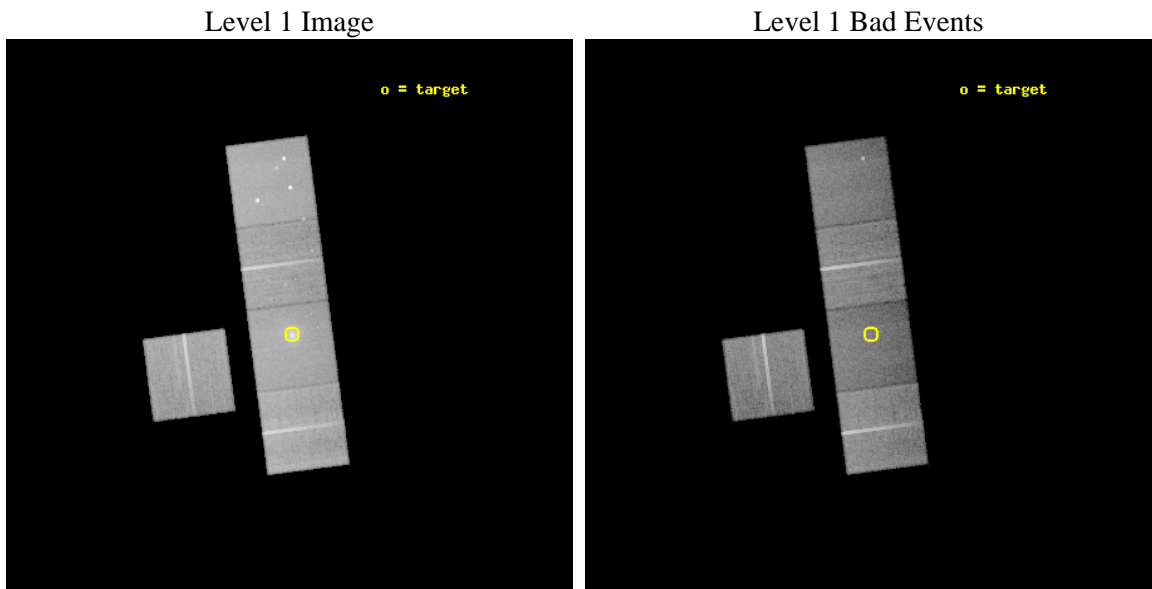
seq_num	800194	Sequence number
obs_id	3194	Observation id
title	CHANDRA AND HST OBSERVATIONS OF THE BRIGHTEST, RELAXED CLUSTER LENSES	Proposal title
observer	Prof. Steven Allen	Principal investigator
object	ABELL 611	Source name
dtcycle	0	
cycle	P	events from which exps? Prim/Second/Both
ra_targ	120.237083	Observer's specified target RA [deg]
dec_targ	36.057222	Observer's specified target Dec [deg]
ra_nom	120.24255217063	Nominal RA [deg]
dec_nom	36.077554545174	Nominal Dec [deg]
roll_nom	82.547078125265	Nominal Roll [deg]
revision	3	Processing version of data
ontime	36591.379583567	Sum of GTIs [s]
livetime	36113.286271126	Livetime [s]
ontime3	36581.833562925	Sum of GTIs [s]
ontime5	36591.338543564	Sum of GTIs [s]
ontime6	36591.297503561	Sum of GTIs [s]
ontime7	36591.379583567	Sum of GTIs [s]
ontime8	36584.933493078	Sum of GTIs [s]
l2events	296714	Number of level 2 events



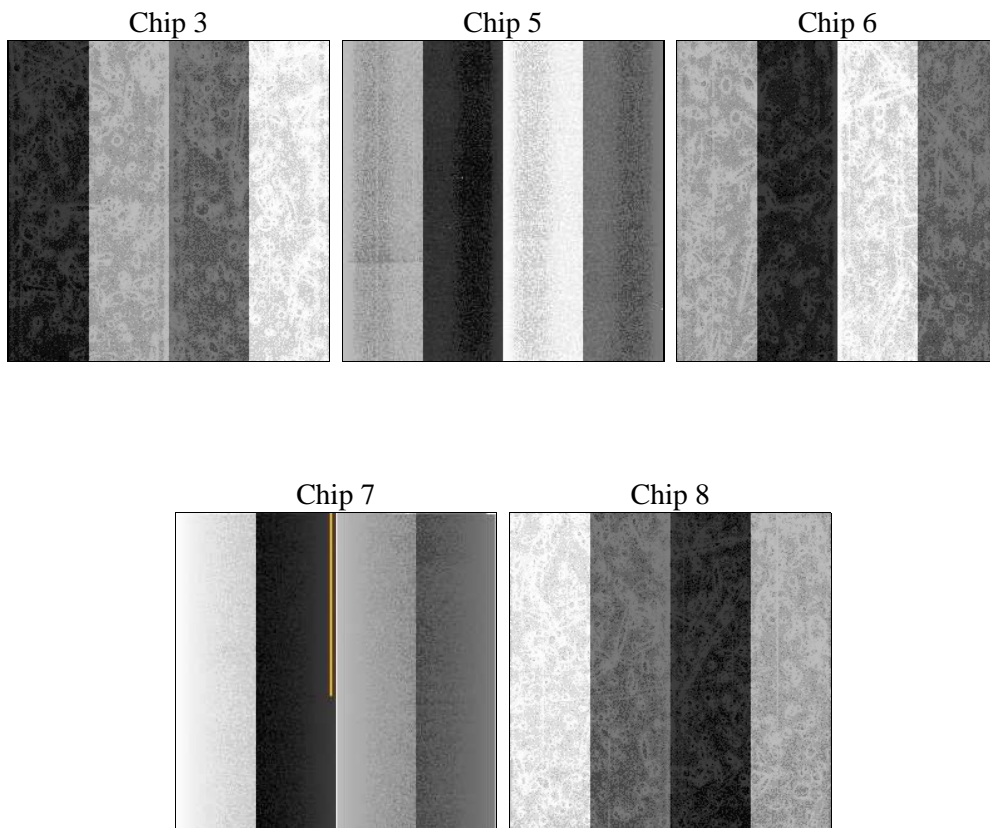
2 OBI

2.1 OBI

2.1.1 Images



2.1.2 Bias



2.1.3 Parameters

obi_num	0	Obi number	sched_exp_time	36500.000000	[s] Scheduled observation exposure time
ascdsver	8.4.5	Processing system revision	ontime	36591.379583567	Sum of GTIs [s]
caldsver	4.5.1.1	 	ontime3	36581.833562925	Sum of GTIs [s]
date	2012-09-27T00:42:10	Date and time of file creation	ontime5	36591.338543564	Sum of GTIs [s]
revision	3	Processing version of data	ontime6	36591.297503561	Sum of GTIs [s]
			ontime7	36591.379583567	Sum of GTIs [s]
			ontime8	36584.933493078	Sum of GTIs [s]
			l1events	1164821	Number of level 1 events

2.1.4 Events

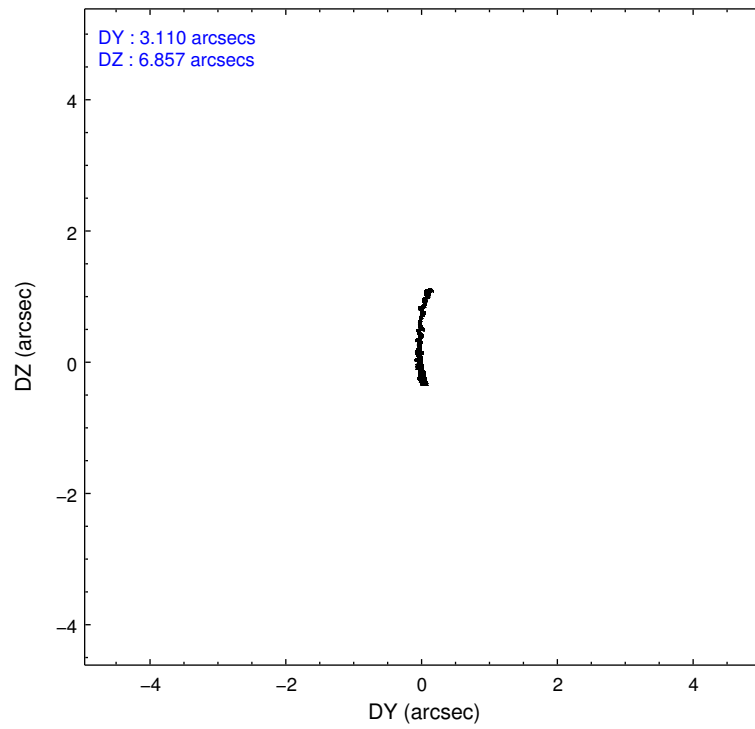
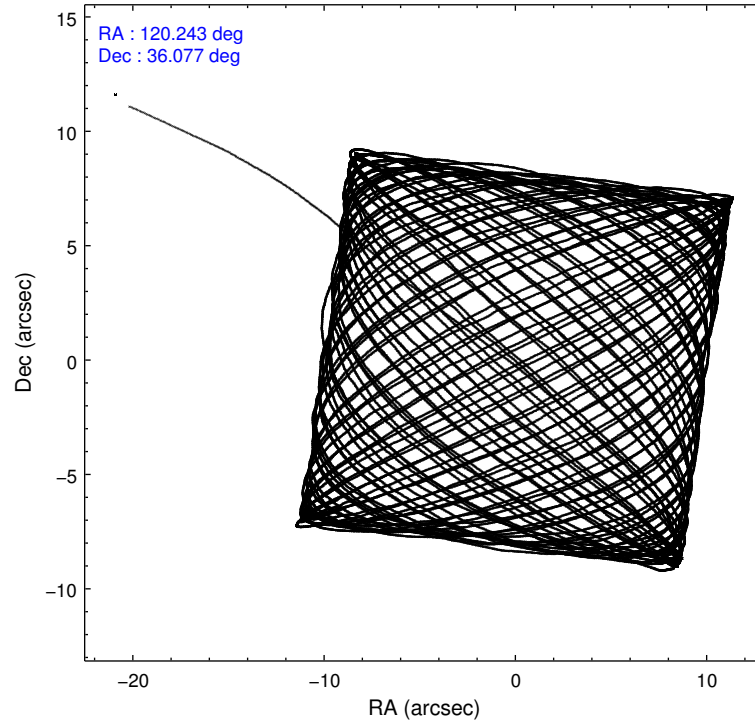
	ccd 3	ccd 5	ccd 6	ccd 7	ccd 8
level 1 events	202071	264973	203435	238744	255598
rejected events	184240	129830	181495	115123	196670
rejected %	91%	48%	89%	48%	76%

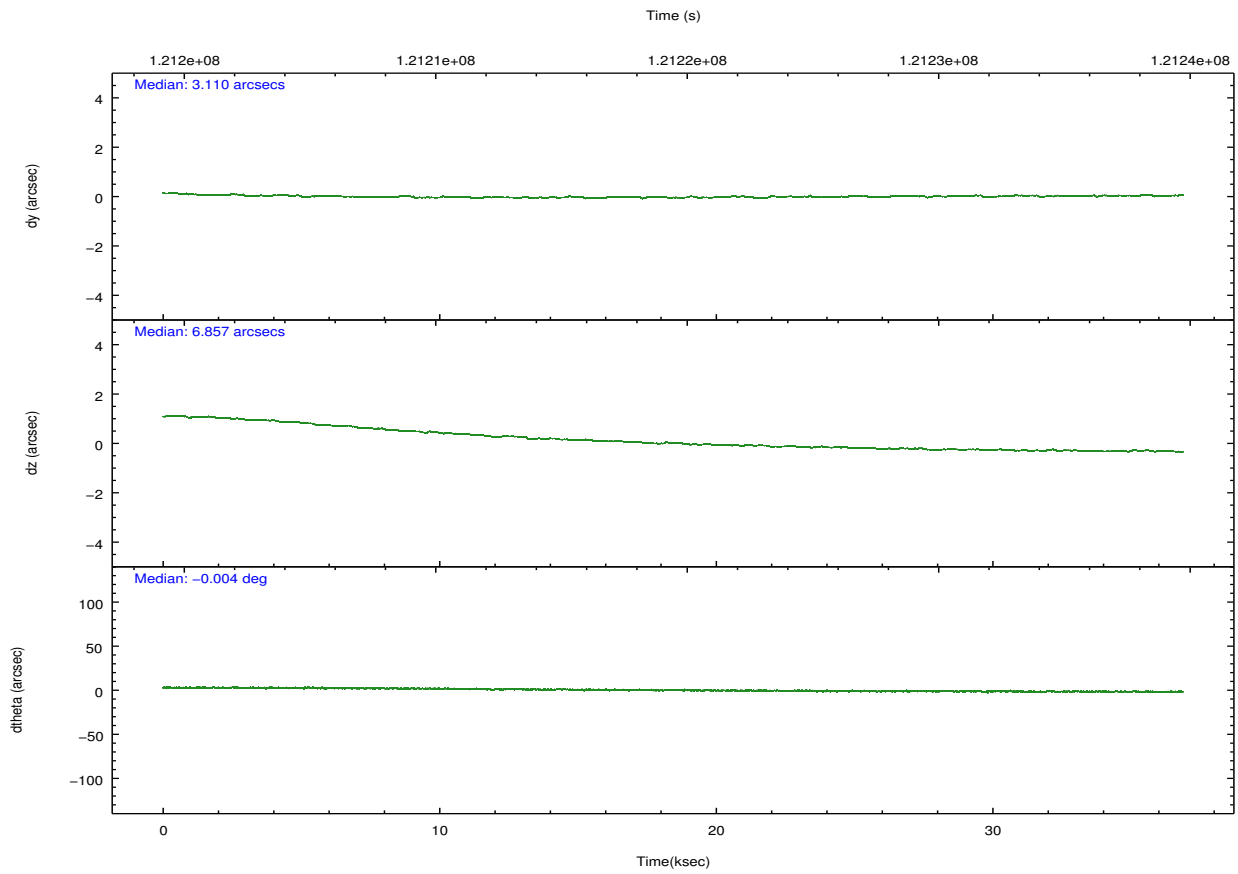
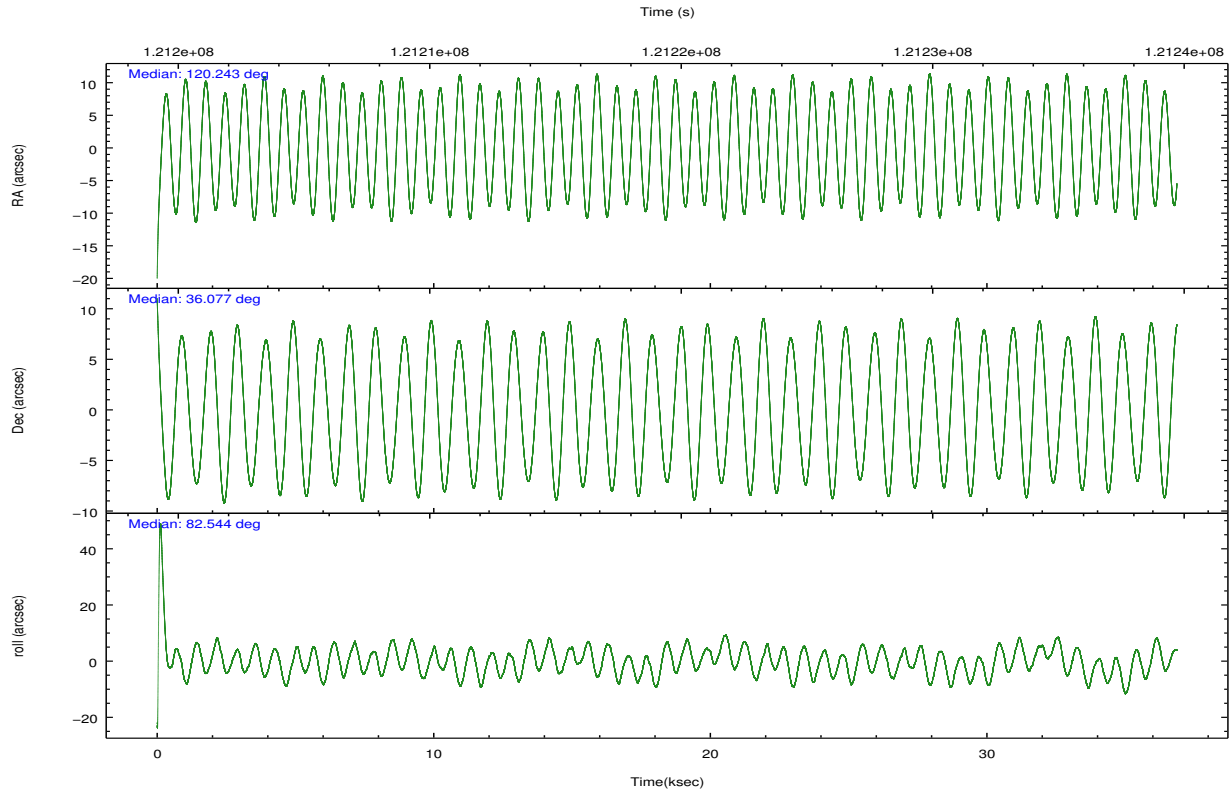
	ccd 3	ccd 5	ccd 6	ccd 7	ccd 8
grade 0 events	6219	20404	8761	17053	19039
	3%	7%	4%	7%	7%
grade 1 events	78	239	112	187	183
	0%	0%	0%	0%	0%
grade 2 events	3709	37486	4299	26262	12224
	1%	14%	2%	11%	4%
grade 3 events	2113	6121	2401	12478	6652
	1%	2%	1%	5%	2%
grade 4 events	2123	5871	2290	12264	6118
	1%	2%	1%	5%	2%
grade 5 events	6901	21234	7505	22528	10336
	3%	8%	3%	9%	4%
grade 6 events	3671	65276	4190	55568	14895
	1%	24%	2%	23%	5%
grade 7 events	177257	108342	173877	92404	186151
	87%	40%	85%	38%	72%

2.2 Compared Parameters

Parameter	Planned	Actual	Parameter	Planned	Actual
Instrument	ACIS	ACIS	Obspar format version number	7	7
Detector	ACIS-35678	ACIS-35678	Obspar file type	PREDICTED	ACTUAL
Grating	NONE	NONE	Obspar update status	NONE	UPDATED
Data mode	VFAINT	VFAINT	Number of optional ACIS chips dropped	0	0
Observation mode	POINTING	POINTING	On-chip summing requested	N	N
[deg] Pointing RA	120.255855	120.2425521706305	Subarray requested	NONE	NONE
[deg] Pointing Dec	36.052502	36.07755454517444	Alternating exposures requested	N	N
[deg] Pointing Roll	82.382647	82.5470781252651	[s] Primary exposure time	0.000000	3.1
[mm] SIM focus pos	-0.684267	-0.6828225247311905			
[mm] SIM defocus	0	0.001444936568705701			
[mm] SIM translation stage pos	-190.132523	-190.1425803651734			
[mm] SIM translation stage offset	0	0.01005778216563158			
[s] Observation start time (MET)	121201371.184000	121200302.13558			
Observation start date	2001-11-03T19:01:47	2001-11-03T18:45:02			
[s] Observation end time (MET)	121237871.184000	121238368.07459			
Observation end date	2001-11-04T05:10:07	2001-11-04T05:19:28			
Read mode	TIMED	TIMED			

2.3 Aspect



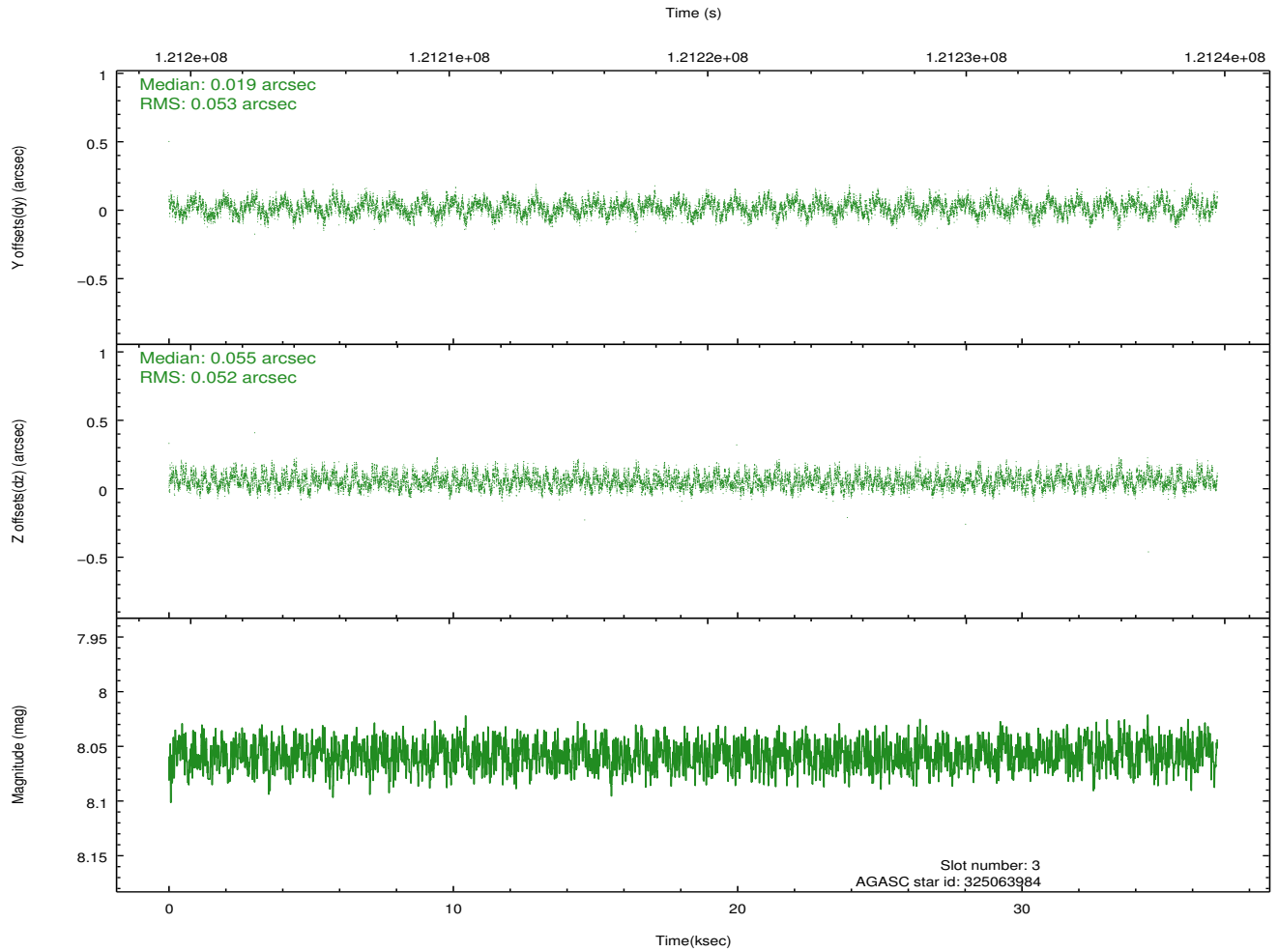
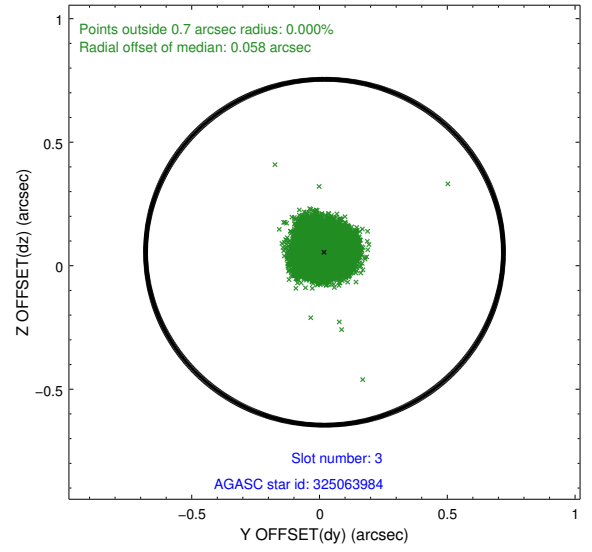
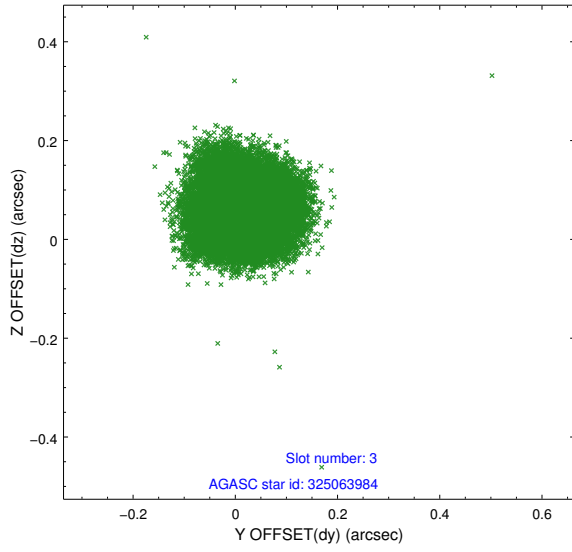


Slot Statistics

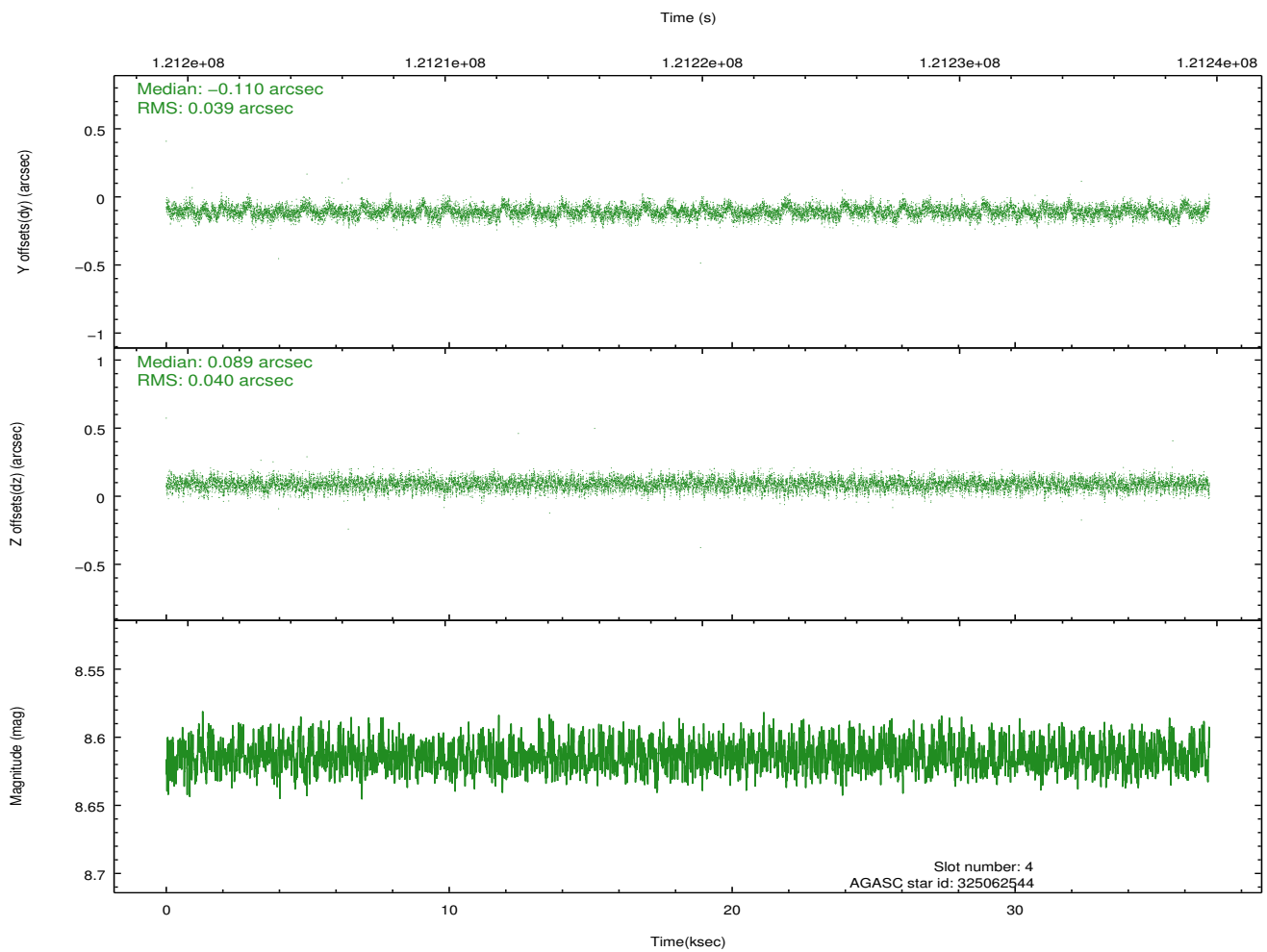
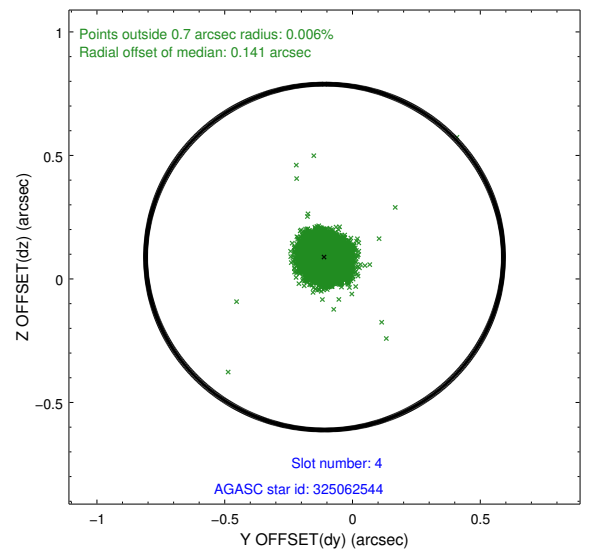
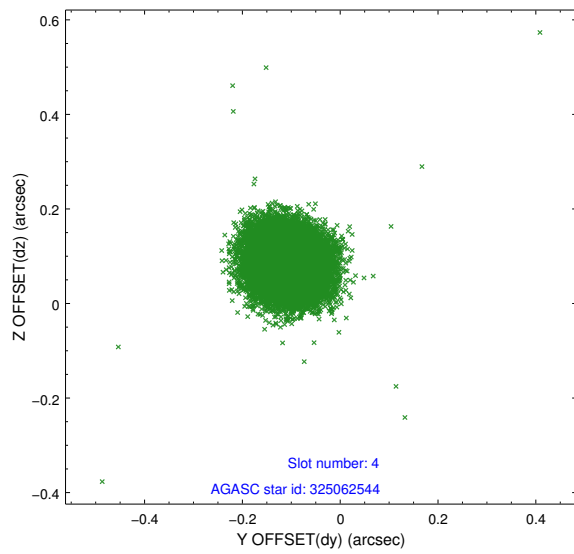
slot	status	id	mag	n_pts	med_dy	med_dz	dr1	dr2	ra	dec	mean_y	mean_z
0	FID	ACIS-S-2	7.11	8993	-0.015	0.006	0.012	0.021	0.000000	0.000000	-755.76	-1728.13
1	FID	ACIS-S-4	7.20	8993	-0.028	0.005	0.009	0.015	0.000000	0.000000	2157.48	180.34
2	FID	ACIS-S-5	7.24	8993	0.010	-0.003	0.011	0.020	0.000000	0.000000	-1808.55	174.02
3	GUIDE	325063984	8.06	17980	0.019	0.055	0.081	0.122	120.588831	35.889114	-452.27	-1039.58
4	GUIDE	325062544	8.61	17986	-0.110	0.089	0.059	0.095	120.714391	36.085678	298.57	-1305.26
5	GUIDE	324534312	9.50	17980	0.127	-0.071	0.088	0.143	120.135932	35.613745	-1611.44	139.00
6	GUIDE	325066416	9.92	17969	-0.245	0.093	0.125	0.201	120.525987	36.625611	2149.40	-498.91
7	GUIDE	324535336	10.00	17975	0.207	-0.163	0.155	0.251	119.509290	35.529890	-2145.99	1920.04

2.4 Star Slots

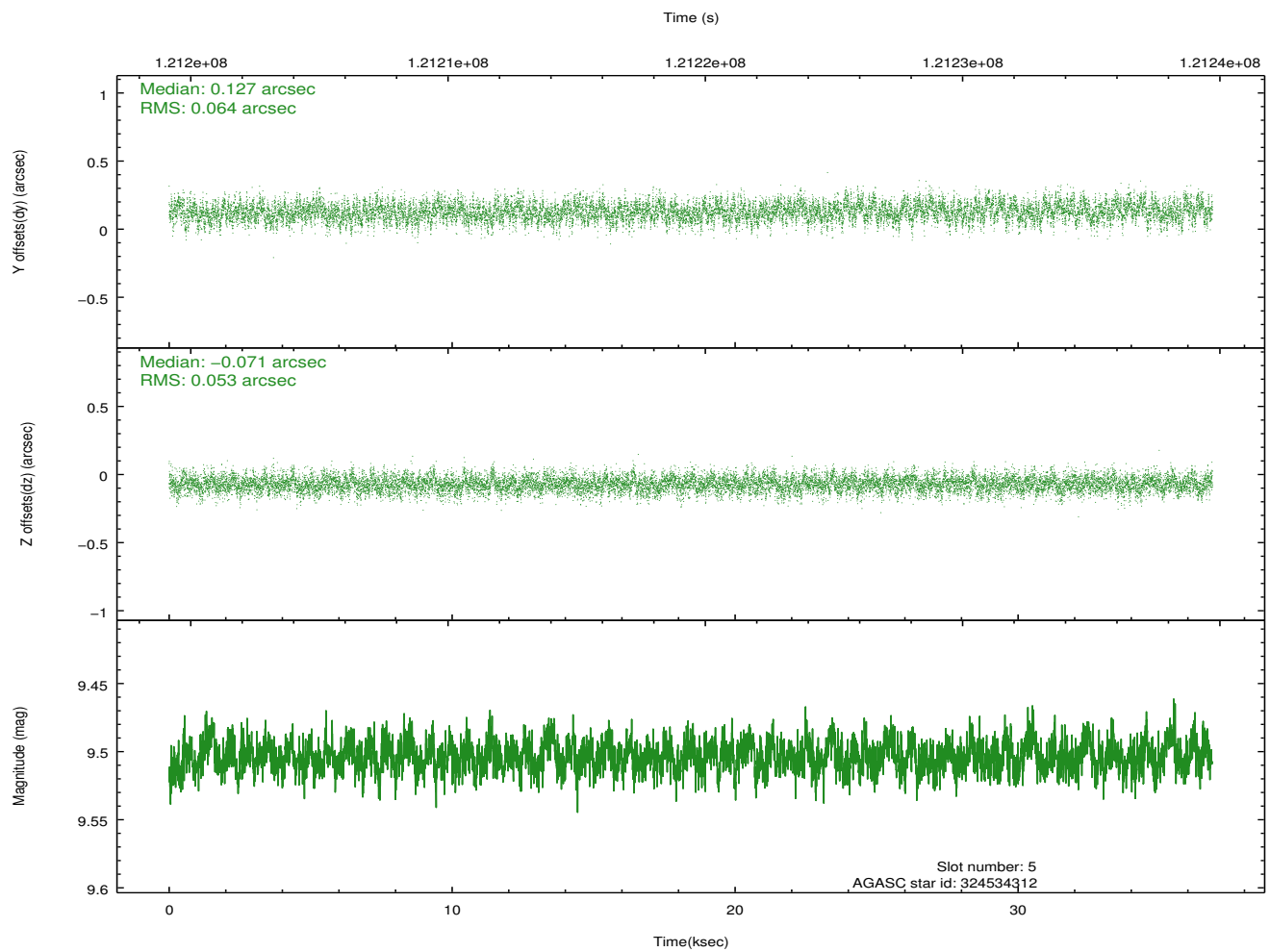
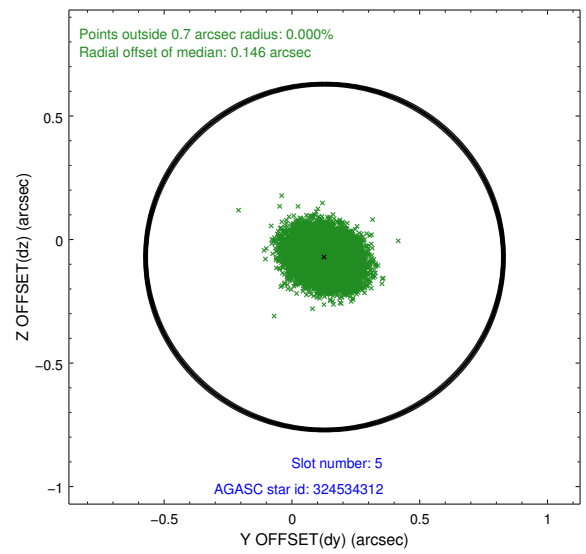
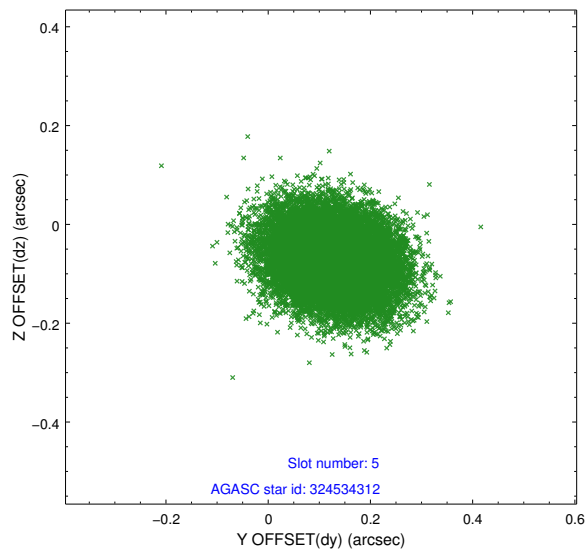
2.4.1 Slot 3



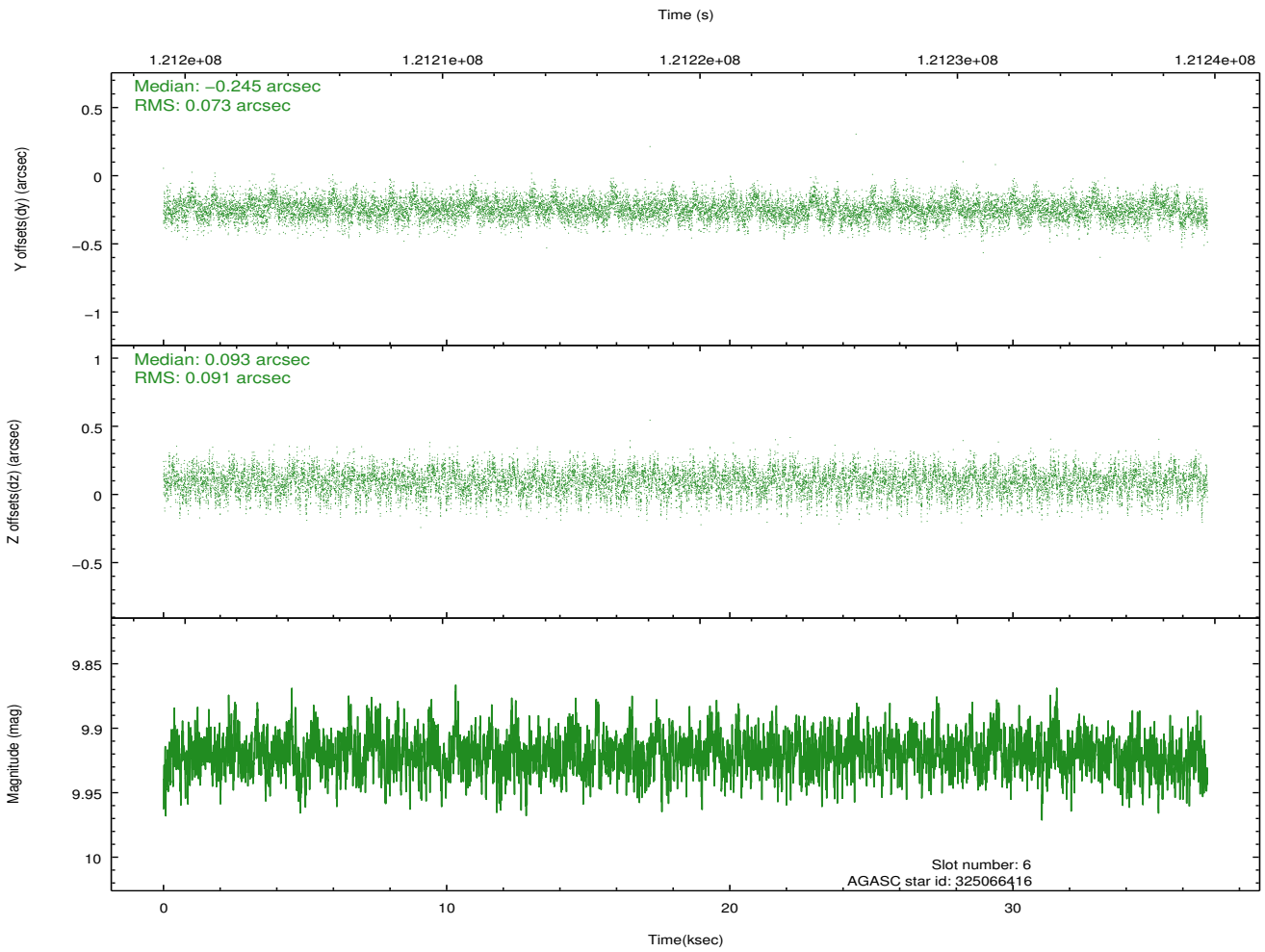
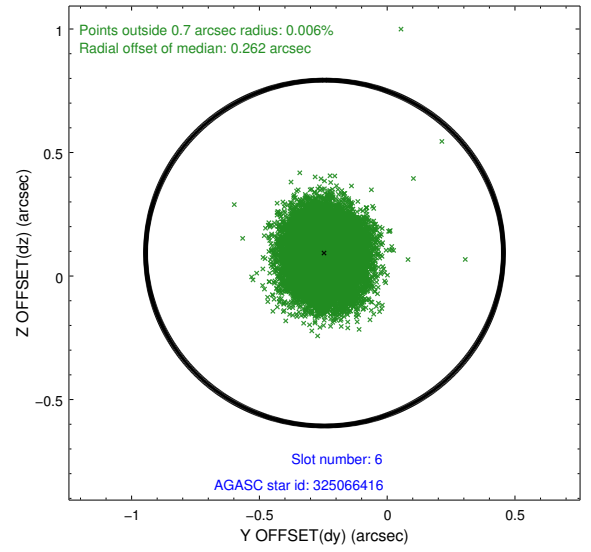
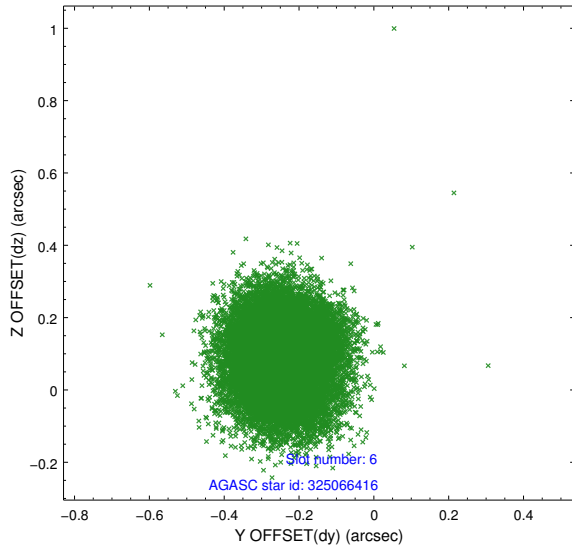
2.4.2 Slot 4



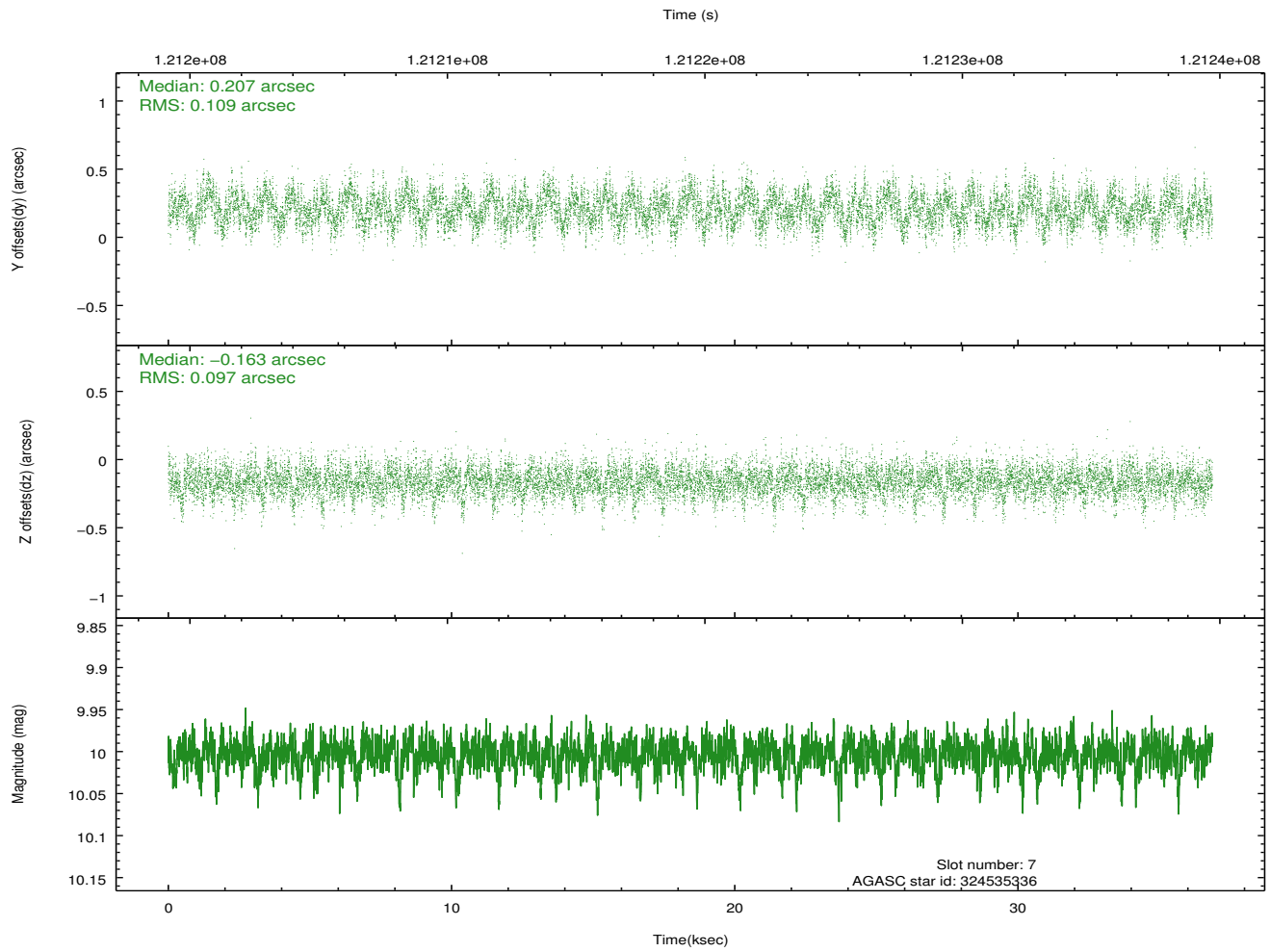
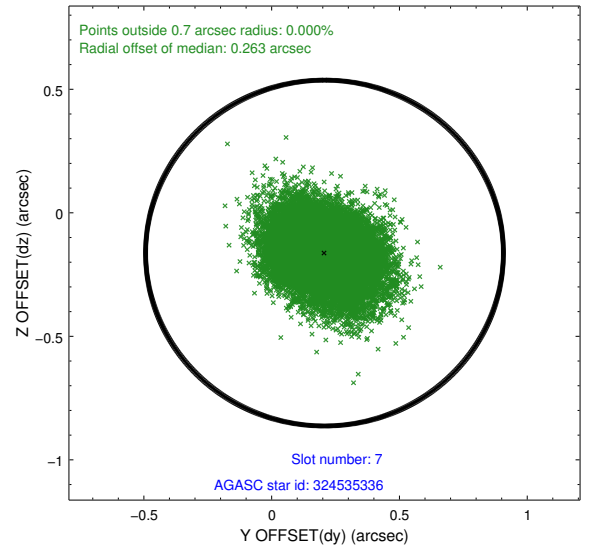
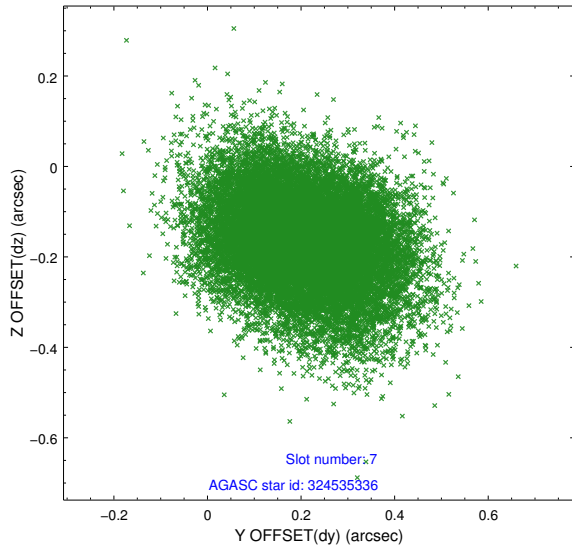
2.4.3 Slot 5



2.4.4 Slot 6

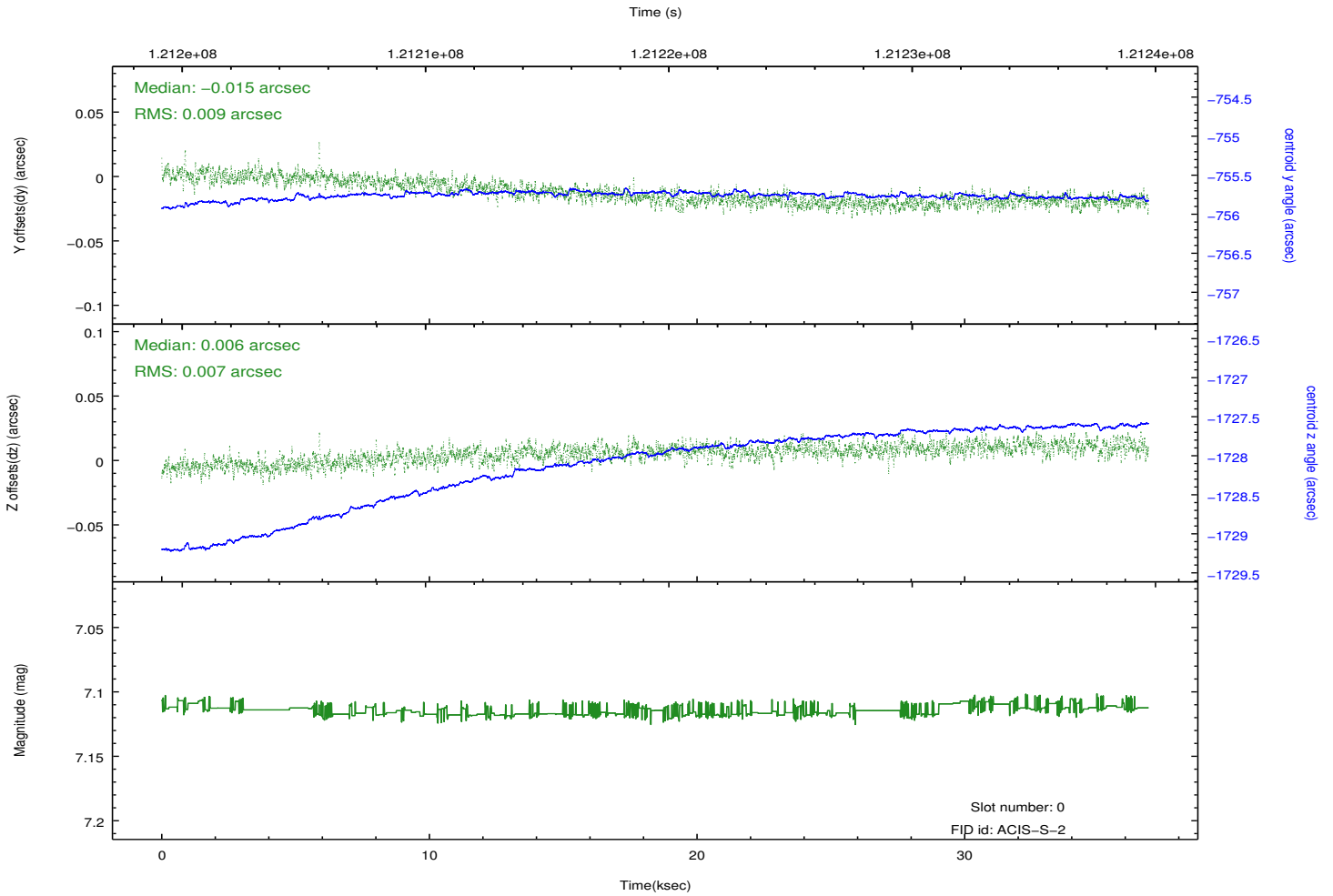
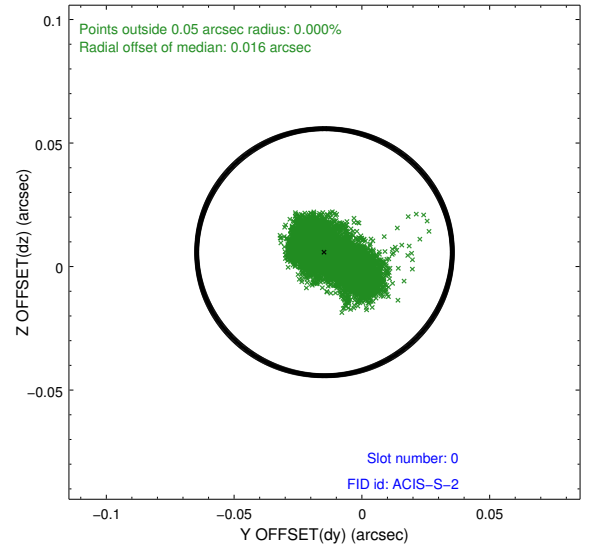
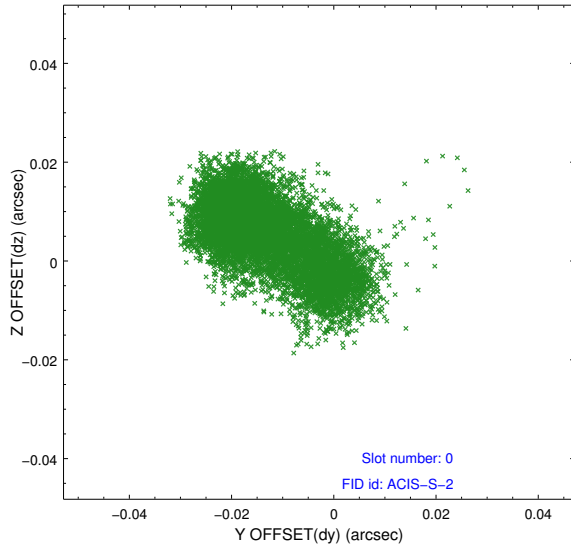


2.4.5 Slot 7

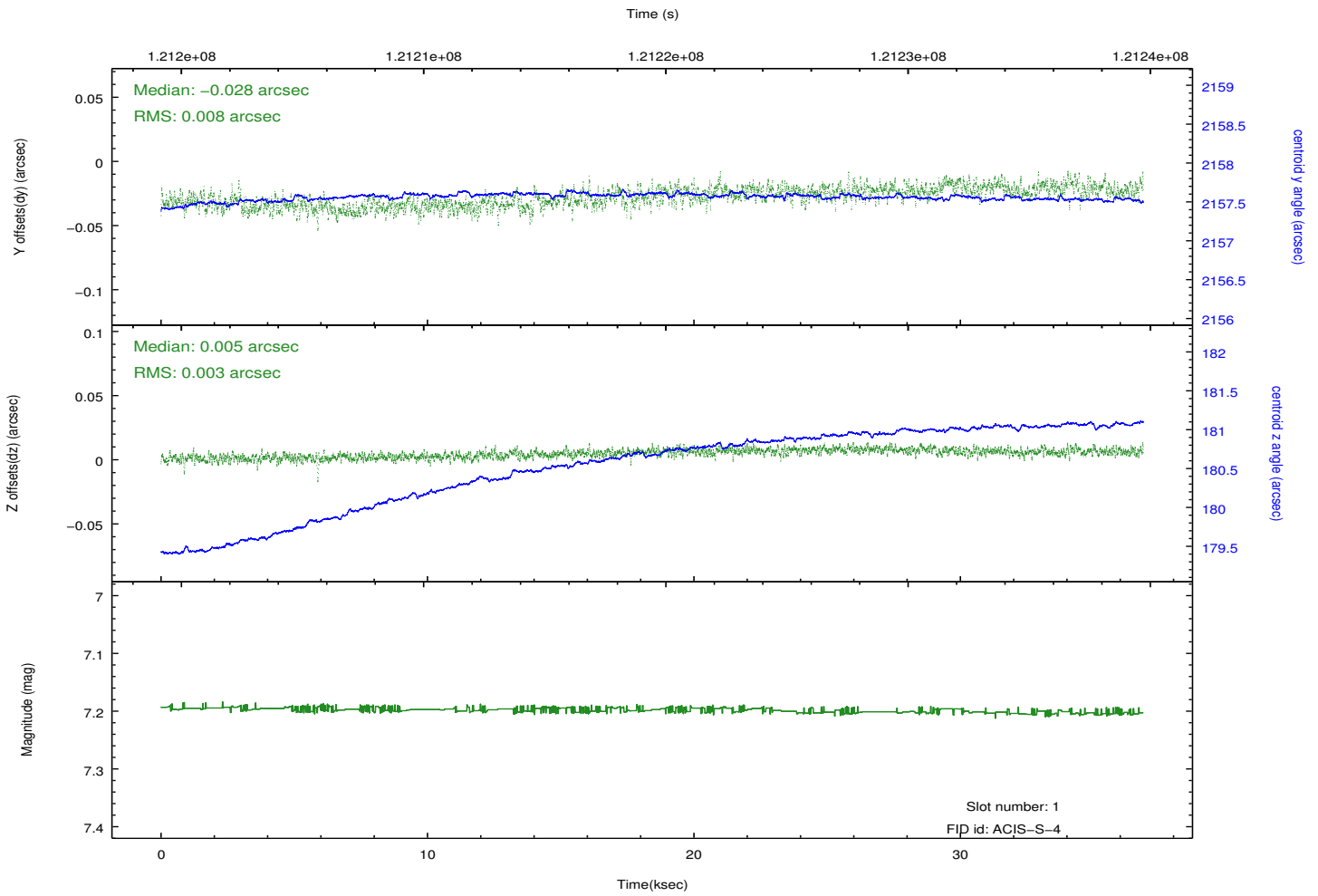
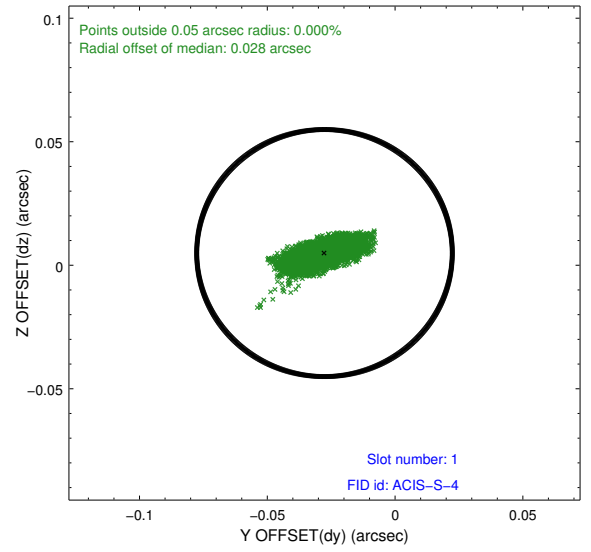
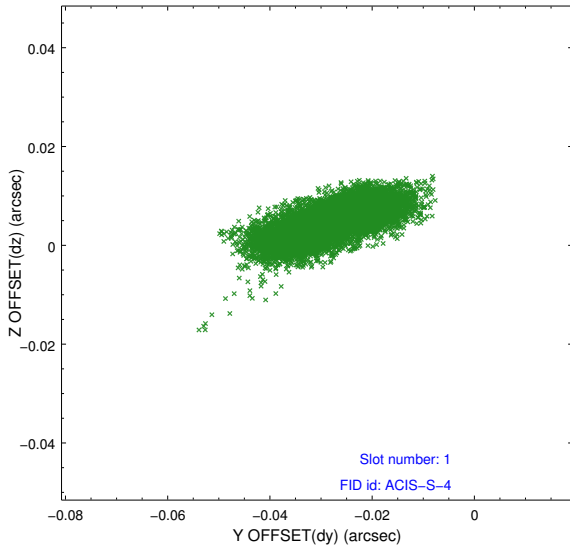


2.5 FID Slots

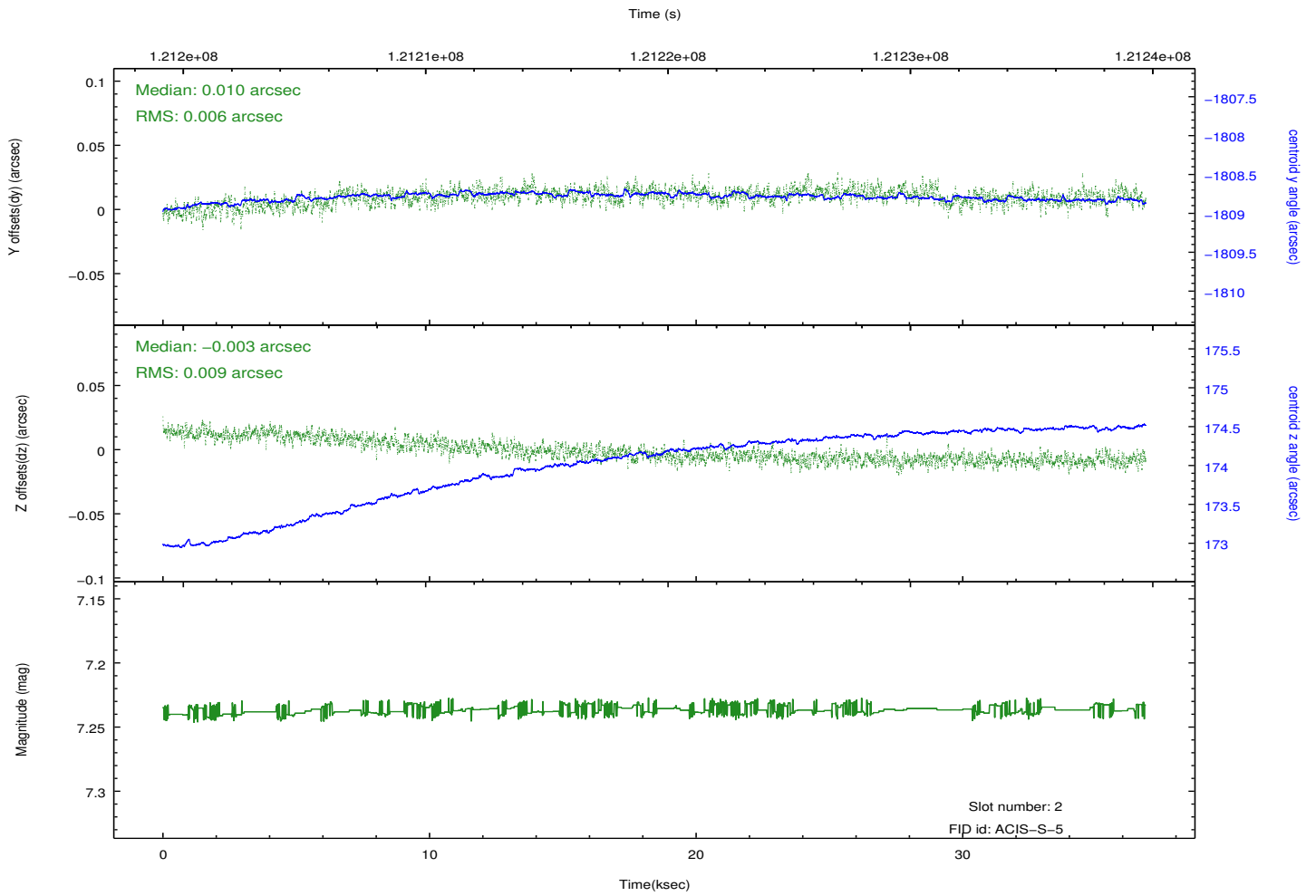
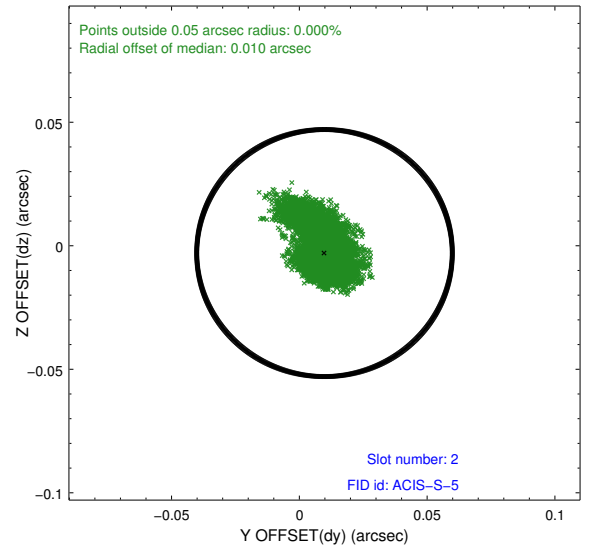
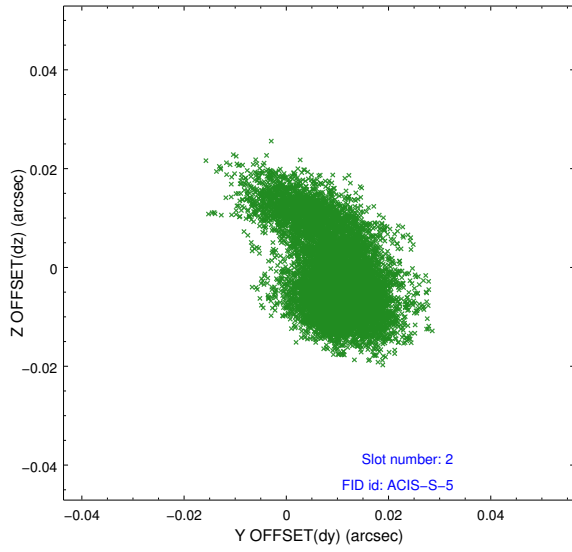
2.5.1 Slot 0



2.5.2 Slot 1



2.5.3 Slot 2



A Summary

A.1 Status

V&V Scientist	Beth Sundheim
V&V Date (YYYY-MM-DD)	2012.09.28
V&V Edition	1
V&V Disposition and Status	OK
V&V Charge Time	36.592

A.2 Comments

Joint proposal with HST.