

V&V Reference Report

L2 ASCDS Version : 8.4.5

Observation 3284 - L2 Version 3
Chandra X-Ray Center

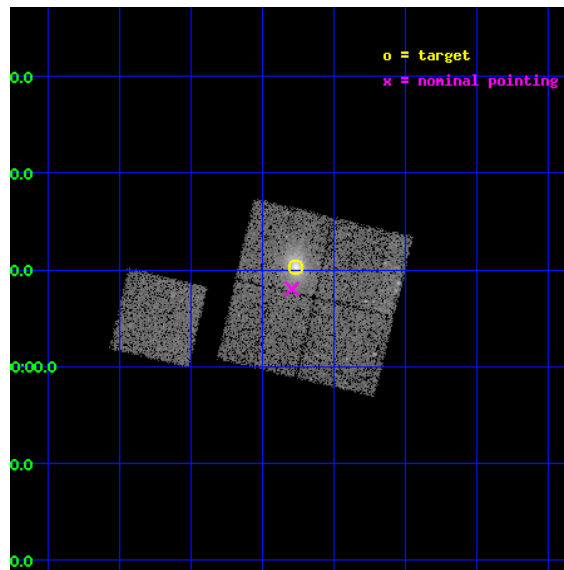
L2 Processing Date : Oct 15 2012

Contents

1	Front	2
2	OBI	3
2.1	OBI	3
2.1.1	Images	3
2.1.2	Bias	3
2.1.3	Parameters	4
2.1.4	Events	4
2.2	Compared Parameters	5
2.3	Aspect	6
2.4	Star Slots	9
2.4.1	Slot 3	9
2.4.2	Slot 4	10
2.4.3	Slot 5	11
2.4.4	Slot 6	12
2.4.5	Slot 7	13
2.5	FID Slots	14
2.5.1	Slot 0	14
2.5.2	Slot 1	15
2.5.3	Slot 2	16
A	Summary	17
A.1	Status	17
A.2	Comments	17

1 Front

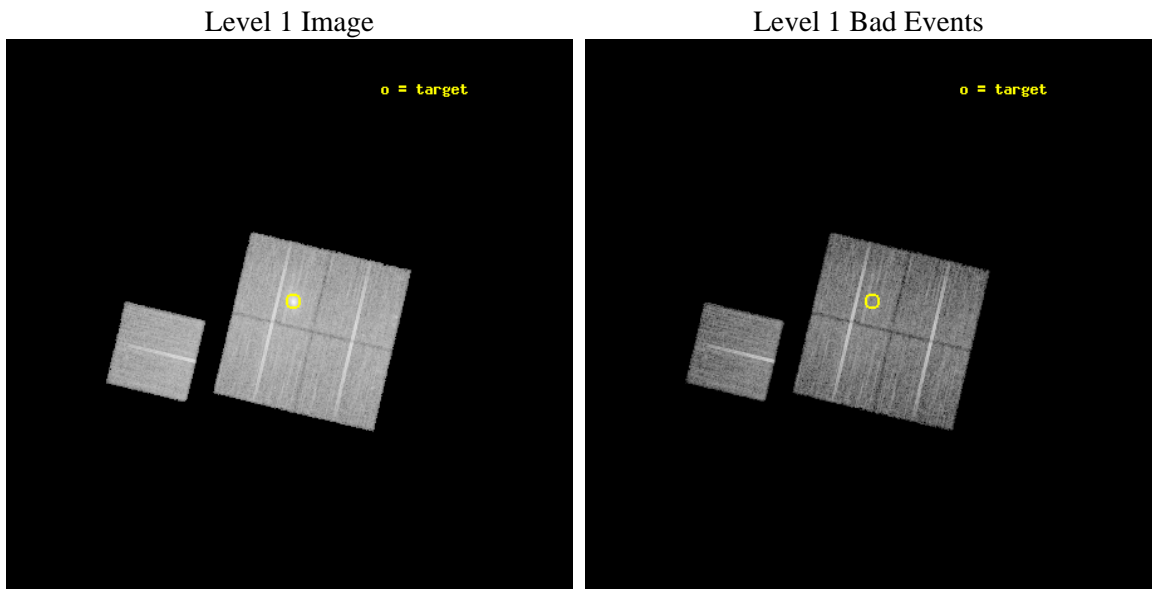
seq_num	800284	Sequence number
obs_id	3284	Observation id
title	MACS: THE X-RAY PROPERTIES OF THE MOST MASSIVE GALAXY CLUSTERS AT Z>0.3	Proposal title
observer	Dr. Harald Ebeling	Principal investigator
object	MACSJ2211.7-0349	Source name
dtcycle	0	
cycle	P	events from which exps? Prim/Second/Both
ra_targ	332.941667	Observer's specified target RA [deg]
dec_targ	-3.829167	Observer's specified target Dec [deg]
ra_nom	332.94853464181	Nominal RA [deg]
dec_nom	-3.866167502352	Nominal Dec [deg]
roll_nom	283.43805226572	Nominal Roll [deg]
revision	3	Processing version of data
ontime	17970.699965417	Sum of GTIs [s]
livetime	17735.899540532	Livetime [s]
ontime0	17967.558965266	Sum of GTIs [s]
ontime1	17967.558995187	Sum of GTIs [s]
ontime2	17970.699965417	Sum of GTIs [s]
ontime3	17970.699965417	Sum of GTIs [s]
ontime6	17967.559005082	Sum of GTIs [s]
l2events	55494	Number of level 2 events



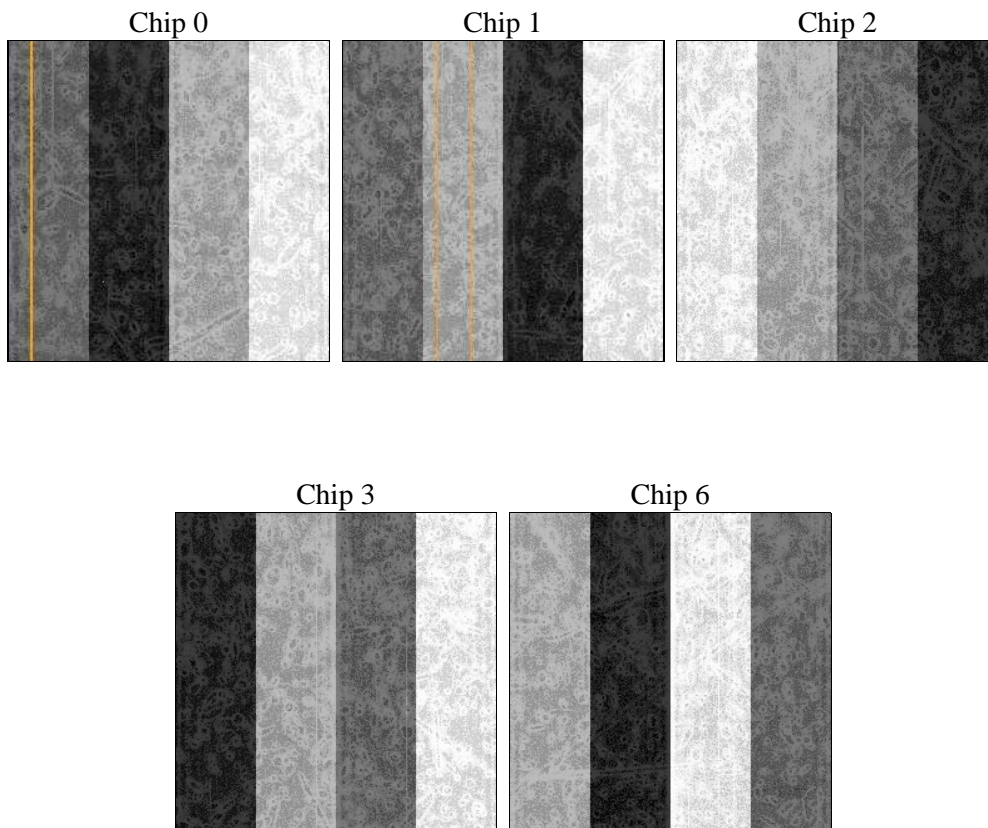
2 OBI

2.1 OBI

2.1.1 Images



2.1.2 Bias



2.1.3 Parameters

obi_num	0	Obi number	sched_exp_time	18200.000000	[s] Scheduled observation exposure time
ascdsver	8.4.5	Processing system revision	ontime	17970.699965417	Sum of GTIs [s]
caldbver	4.5.2	 	ontime0	17967.558965266	Sum of GTIs [s]
date	2012-10-15T13:03:13	Date and time of file creation	ontime1	17967.558995187	Sum of GTIs [s]
revision	3	Processing version of data	ontime2	17970.699965417	Sum of GTIs [s]
			ontime3	17970.699965417	Sum of GTIs [s]
			ontime6	17967.559005082	Sum of GTIs [s]
			l1events	503582	Number of level 1 events

2.1.4 Events

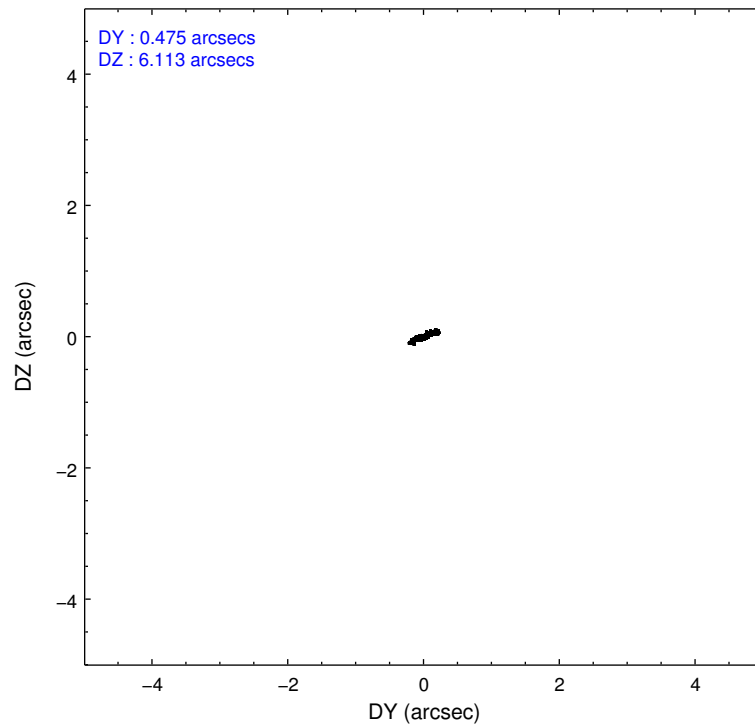
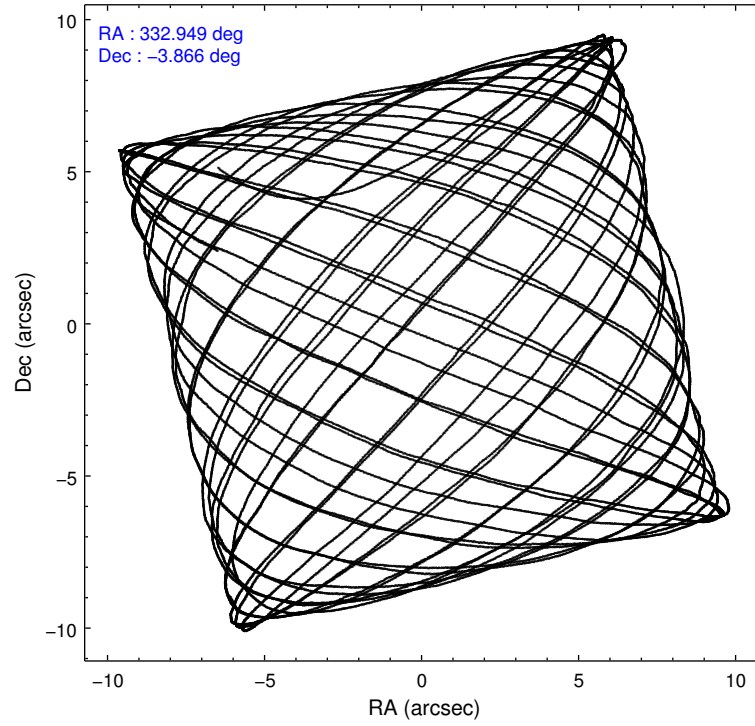
	ccd 0	ccd 1	ccd 2	ccd 3	ccd 6
level 1 events	91369	91979	105611	113732	100891
rejected events	81673	80653	95763	90364	90914
rejected %	89%	87%	90%	79%	90%

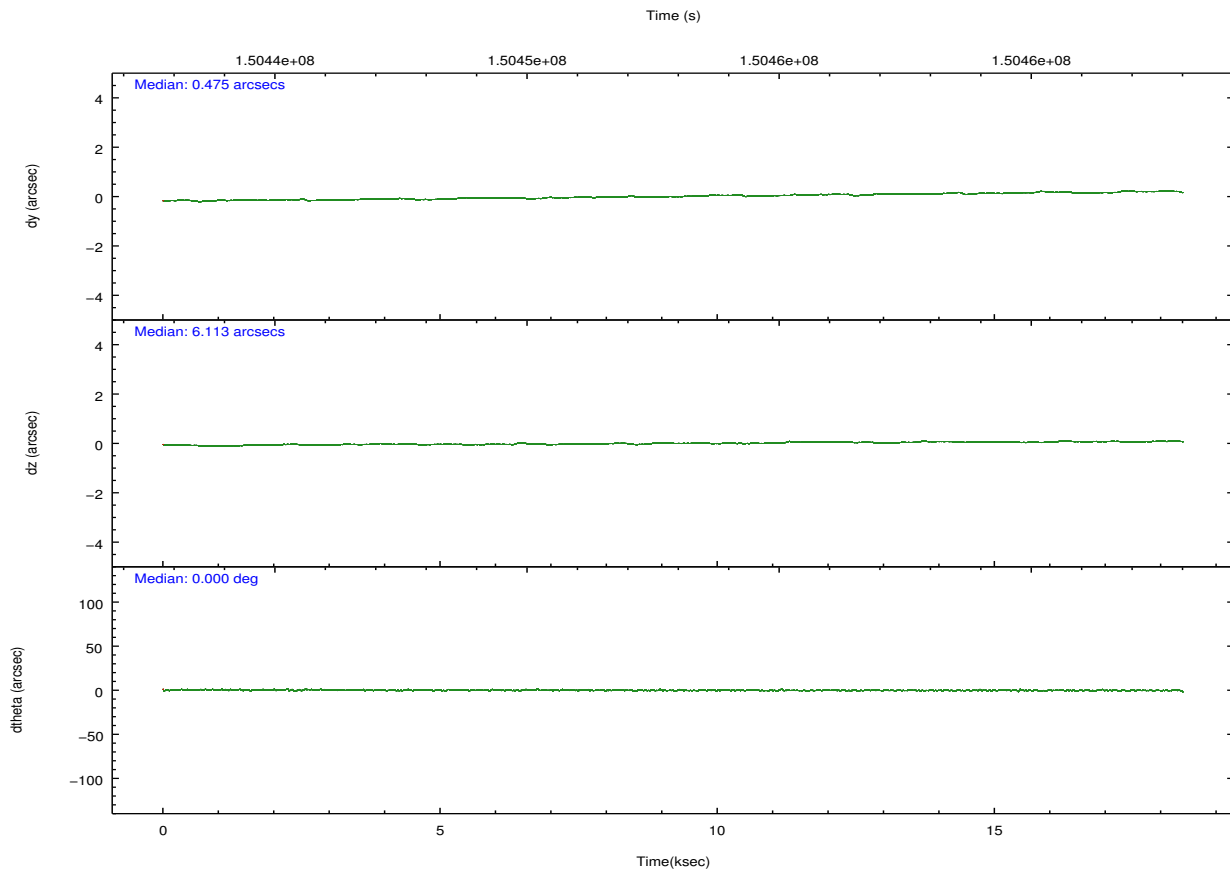
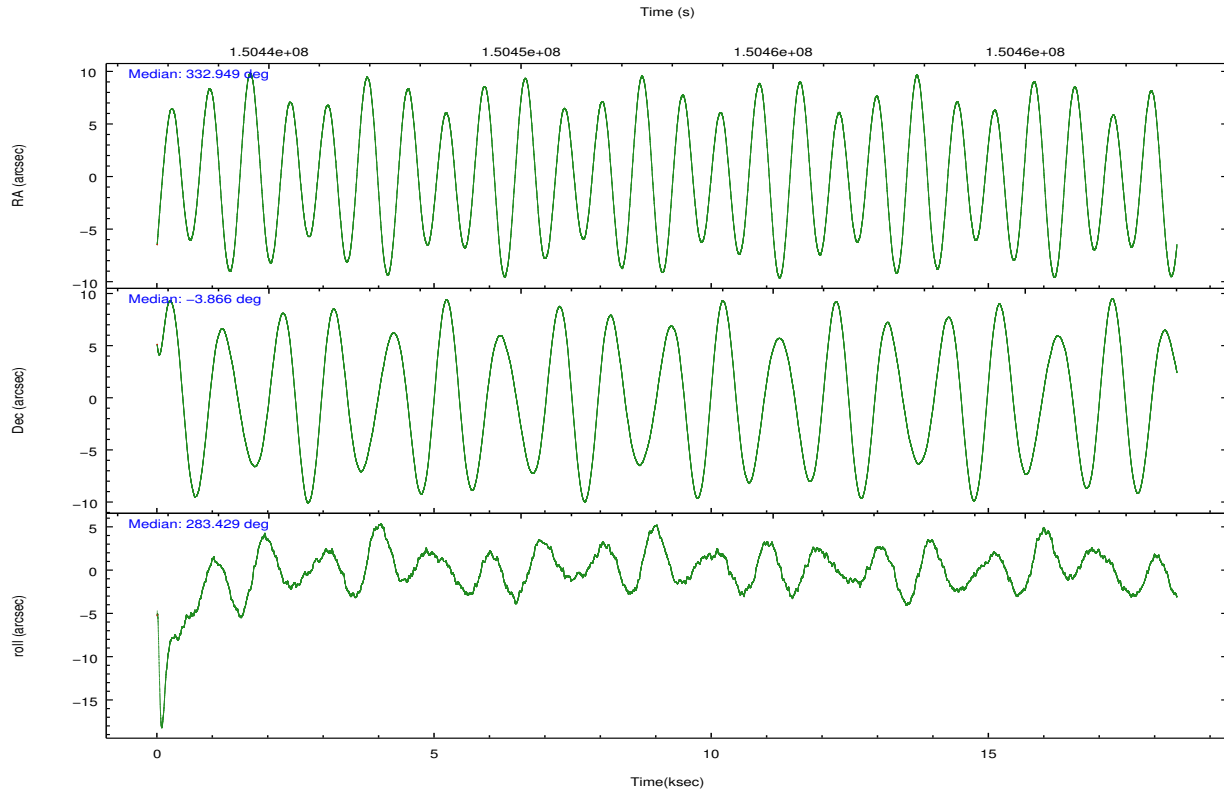
	ccd 0	ccd 1	ccd 2	ccd 3	ccd 6
grade 0 events	3418	4495	3683	14914	3562
	3%	4%	3%	13%	3%
grade 1 events	41	46	51	98	54
	0%	0%	0%	0%	0%
grade 2 events	2167	2288	2215	3316	2047
	2%	2%	2%	2%	2%
grade 3 events	1207	1225	1083	1537	1155
	1%	1%	1%	1%	1%
grade 4 events	1060	1223	1123	1449	1139
	1%	1%	1%	1%	1%
grade 5 events	3305	3565	3059	3740	3758
	3%	3%	2%	3%	3%
grade 6 events	1845	2097	1746	2158	2076
	2%	2%	1%	1%	2%
grade 7 events	78326	77040	92651	86520	87100
	85%	83%	87%	76%	86%

2.2 Compared Parameters

Parameter	Planned	Actual	Parameter	Planned	Actual
Instrument	ACIS	ACIS	Obspar format version number	7	7
Detector	ACIS-01236	ACIS-01236	Obspar file type	PREDICTED	ACTUAL
Grating	NONE	NONE	Obspar update status	NONE	UPDATED
Data mode	VFAINT	VFAINT	Number of optional ACIS chips dropped	0	0
Observation mode	POINTING	POINTING	On-chip summing requested	N	N
[deg] Pointing RA	332.929585	332.9485346418136	Subarray requested	NONE	NONE
[deg] Pointing Dec	-3.846381	-3.866167502351967	Alternating exposures requested	N	N
[deg] Pointing Roll	283.228077	283.4380522657188	[s] Primary exposure time	0.000000	3.1
[mm] SIM focus pos	-0.782348	-0.7809083437167272			
[mm] SIM defocus	0	0.001439871863259334			
[mm] SIM translation stage pos	-227.742463	-227.734108438797			
[mm] SIM translation stage offset	-5.85	-5.858344564132665			
[s] Observation start time (MET)	150443899.184000	150443069.52491			
Observation start date	2002-10-08T05:57:15	2002-10-08T05:44:29			
[s] Observation end time (MET)	150462099.184000	150462840.23823			
Observation end date	2002-10-08T11:00:35	2002-10-08T11:14:00			
Read mode	TIMED	TIMED			

2.3 Aspect



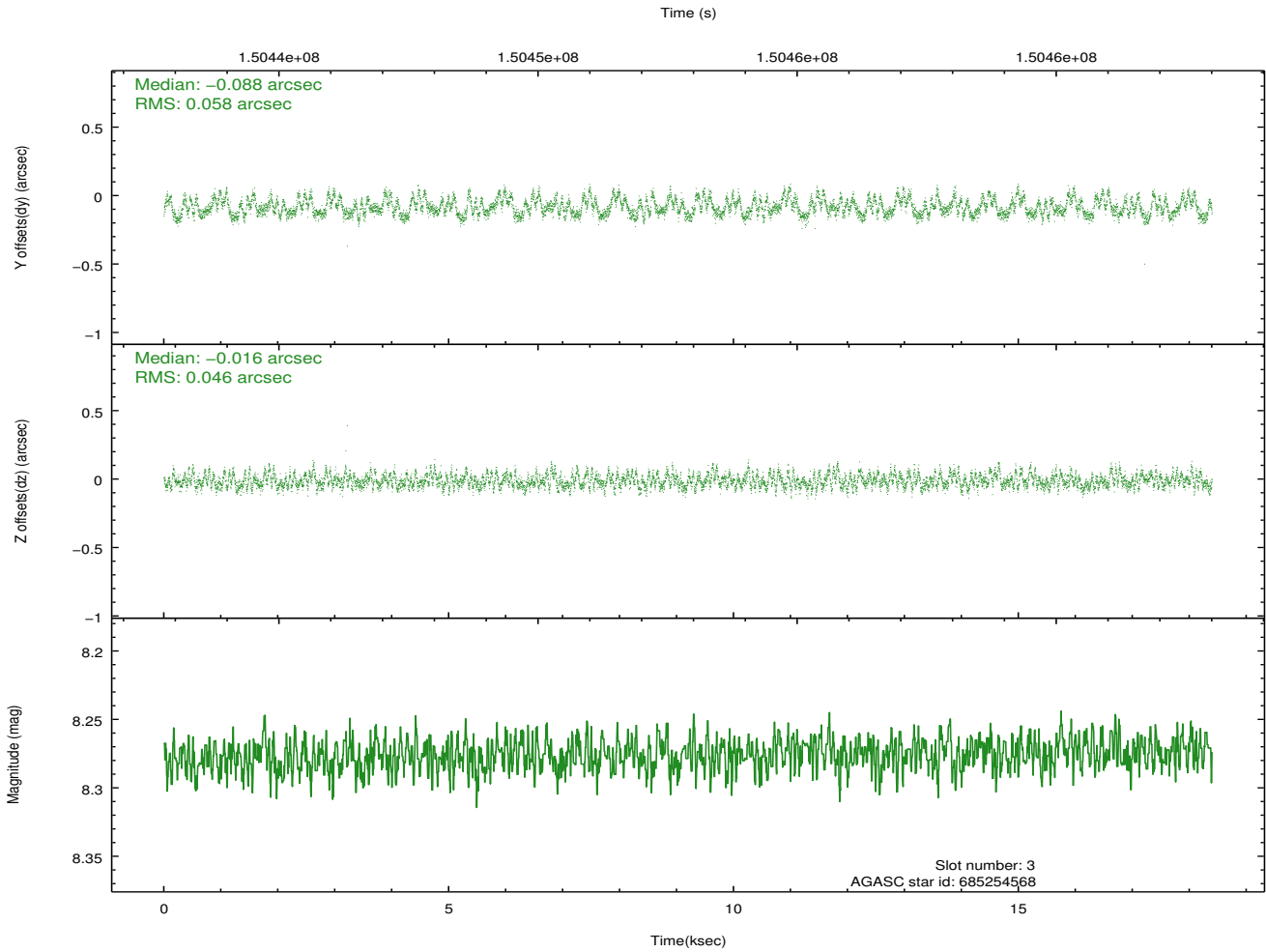
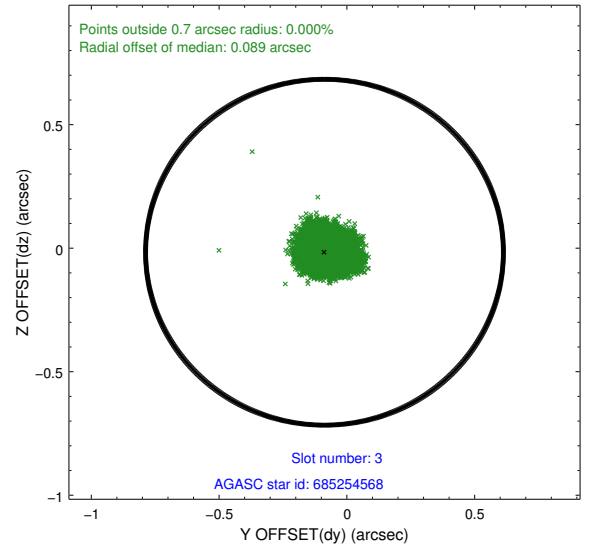
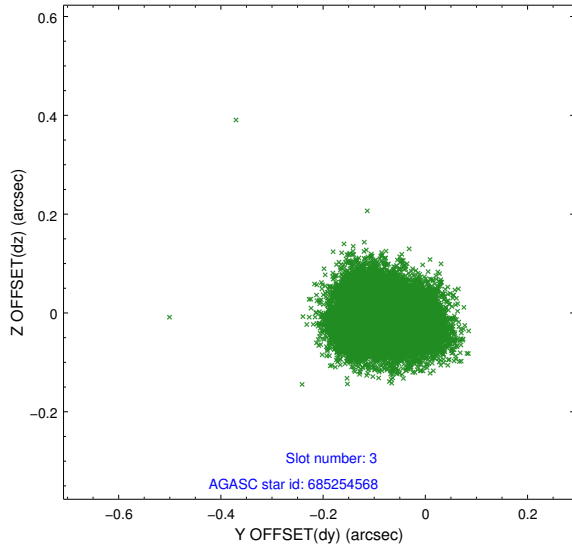


Slot Statistics

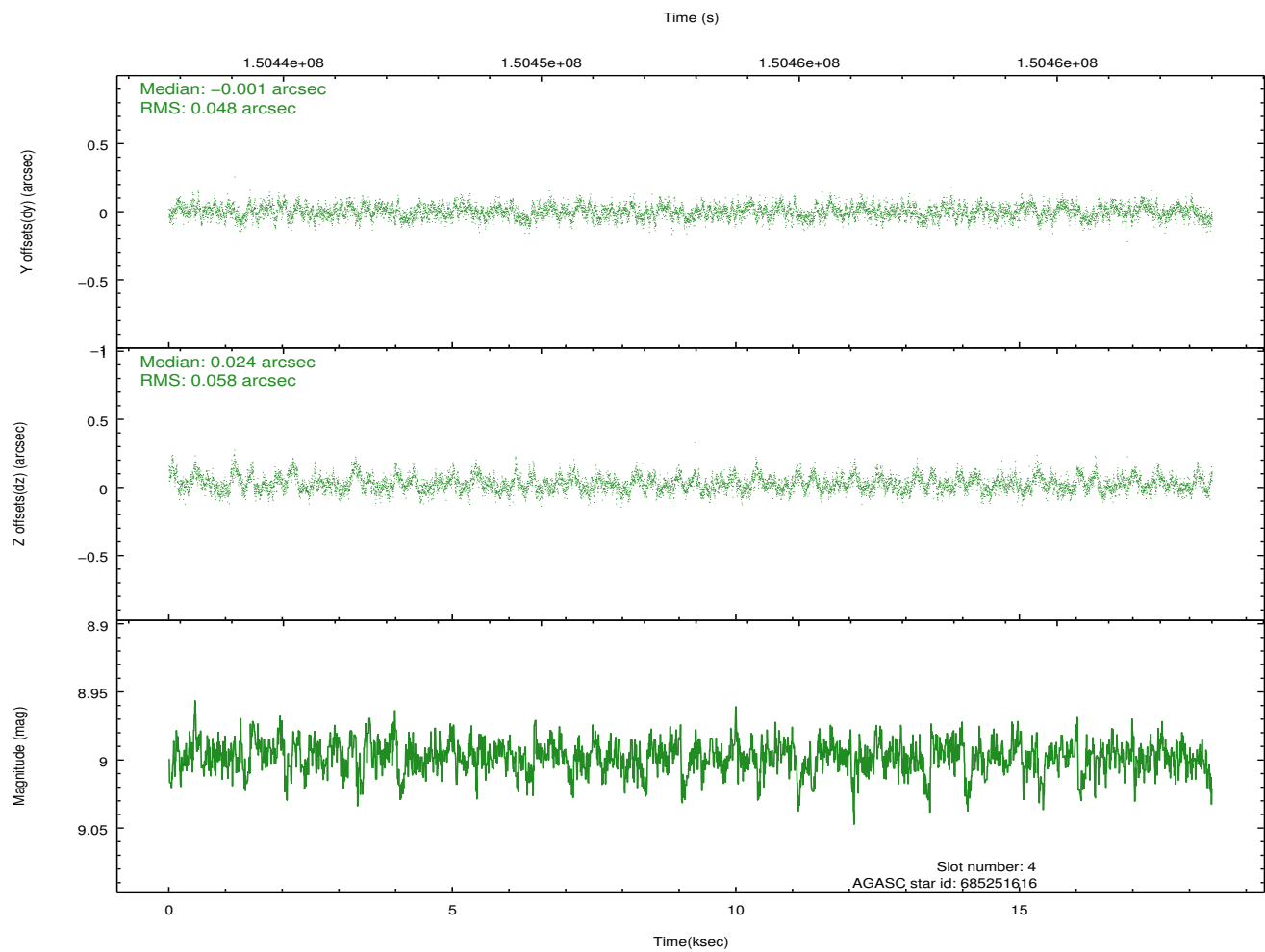
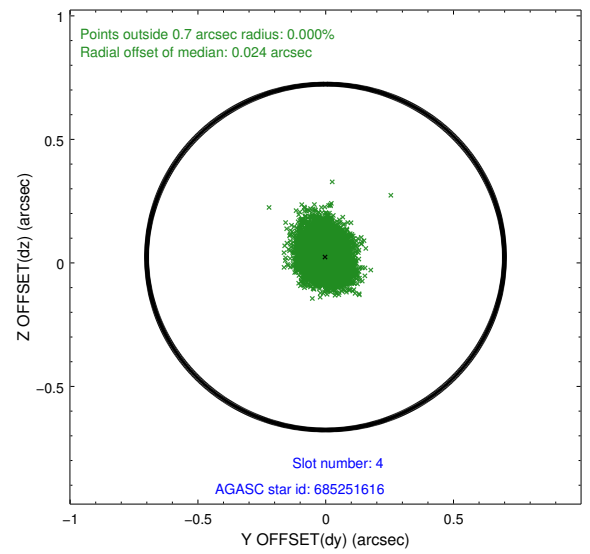
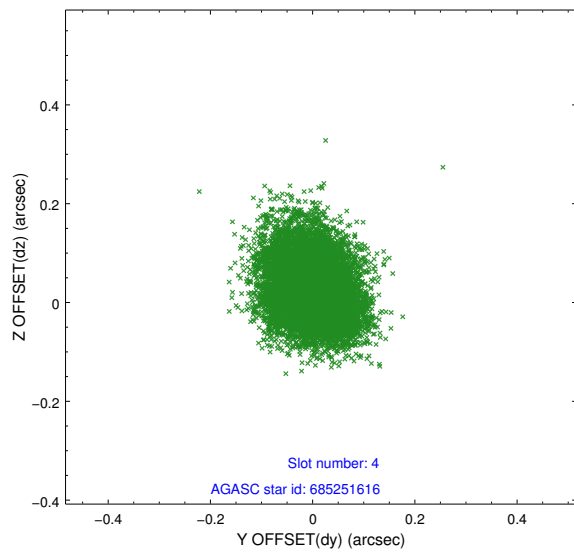
slot	status	id	mag	n_pts	med_dy	med_dz	dr1	dr2	ra	dec	mean_y	mean_z
0	FID	ACIS-I-1	7.25	4488	0.082	-0.022	0.006	0.011	0.000000	0.000000	939.31	-949.78
1	FID	ACIS-I-5	7.23	4488	-0.191	0.095	0.006	0.011	0.000000	0.000000	-1808.88	947.79
2	FID	ACIS-I-6	7.26	4487	0.018	-0.002	0.007	0.012	0.000000	0.000000	404.65	1592.37
3	GUIDE	685254568	8.28	8972	-0.088	-0.016	0.081	0.122	333.425929	-3.775790	161.36	1793.62
4	GUIDE	685251616	9.00	8970	-0.001	0.024	0.080	0.130	333.300751	-3.872390	396.82	1276.49
5	GUIDE	685115272	8.99	8973	0.046	-0.128	0.077	0.127	332.494320	-4.136594	660.76	-1760.66
6	GUIDE	685254192	9.05	8970	0.027	0.009	0.076	0.122	332.719594	-3.749941	-509.83	-655.19
7	GUIDE	685247552	9.43	8964	0.005	0.109	0.127	0.185	332.591248	-3.433875	-1723.05	-844.18

2.4 Star Slots

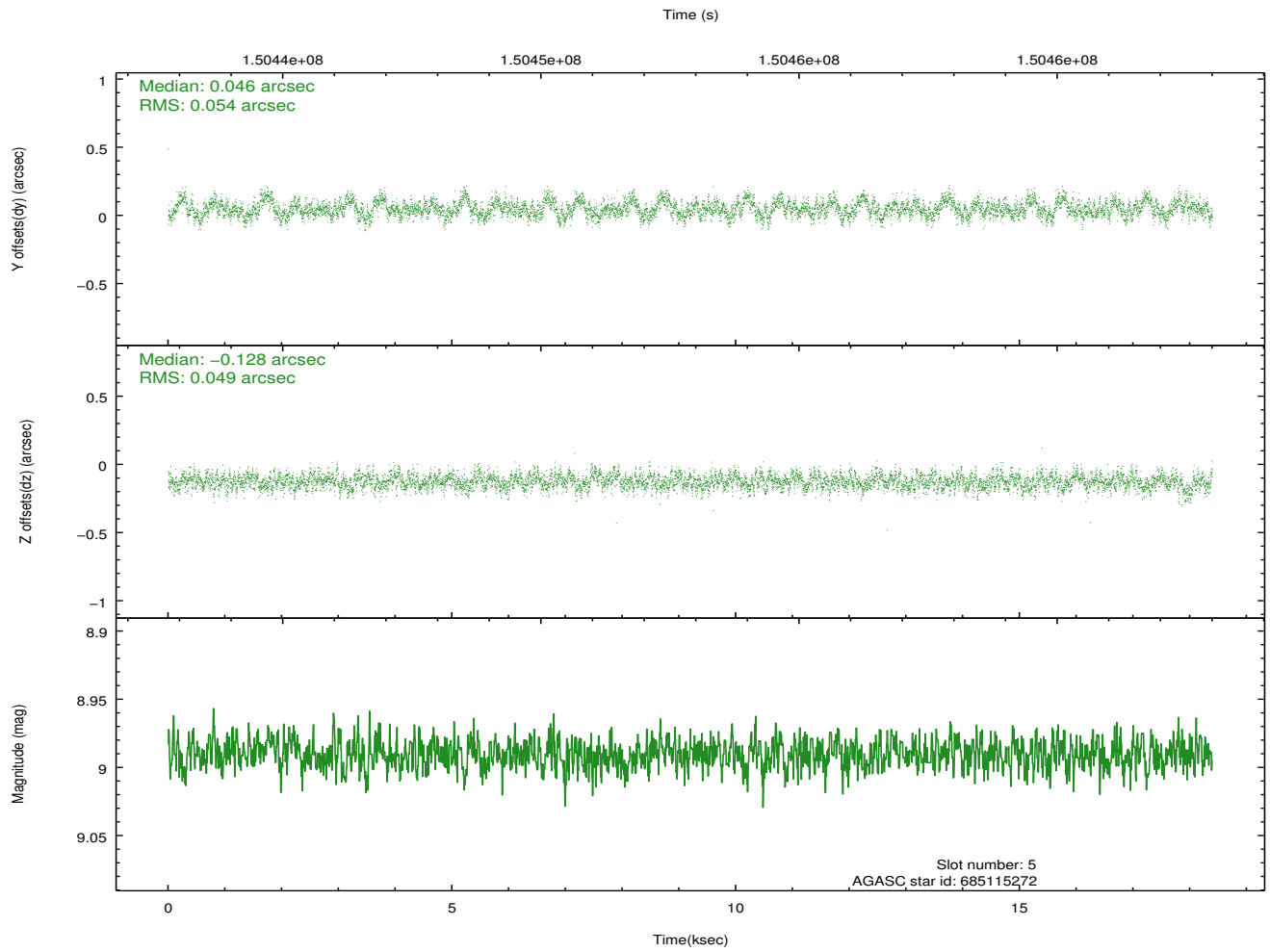
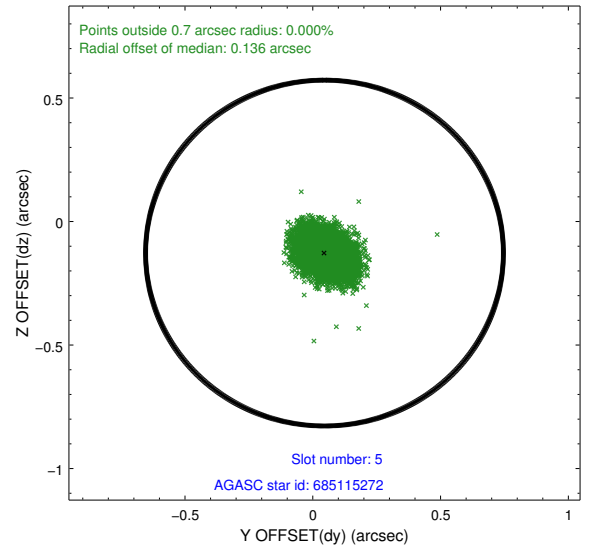
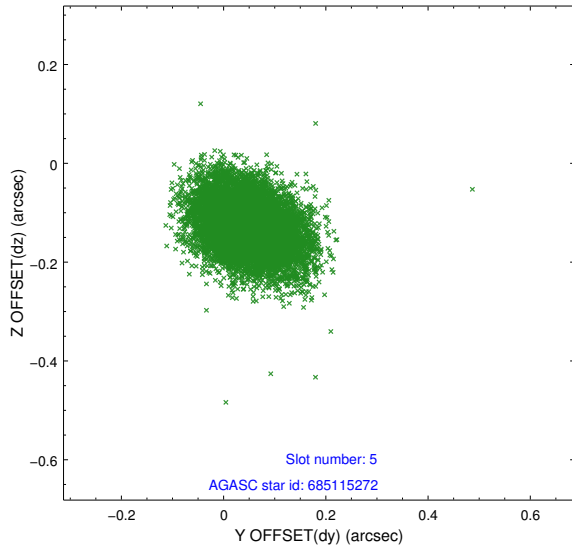
2.4.1 Slot 3



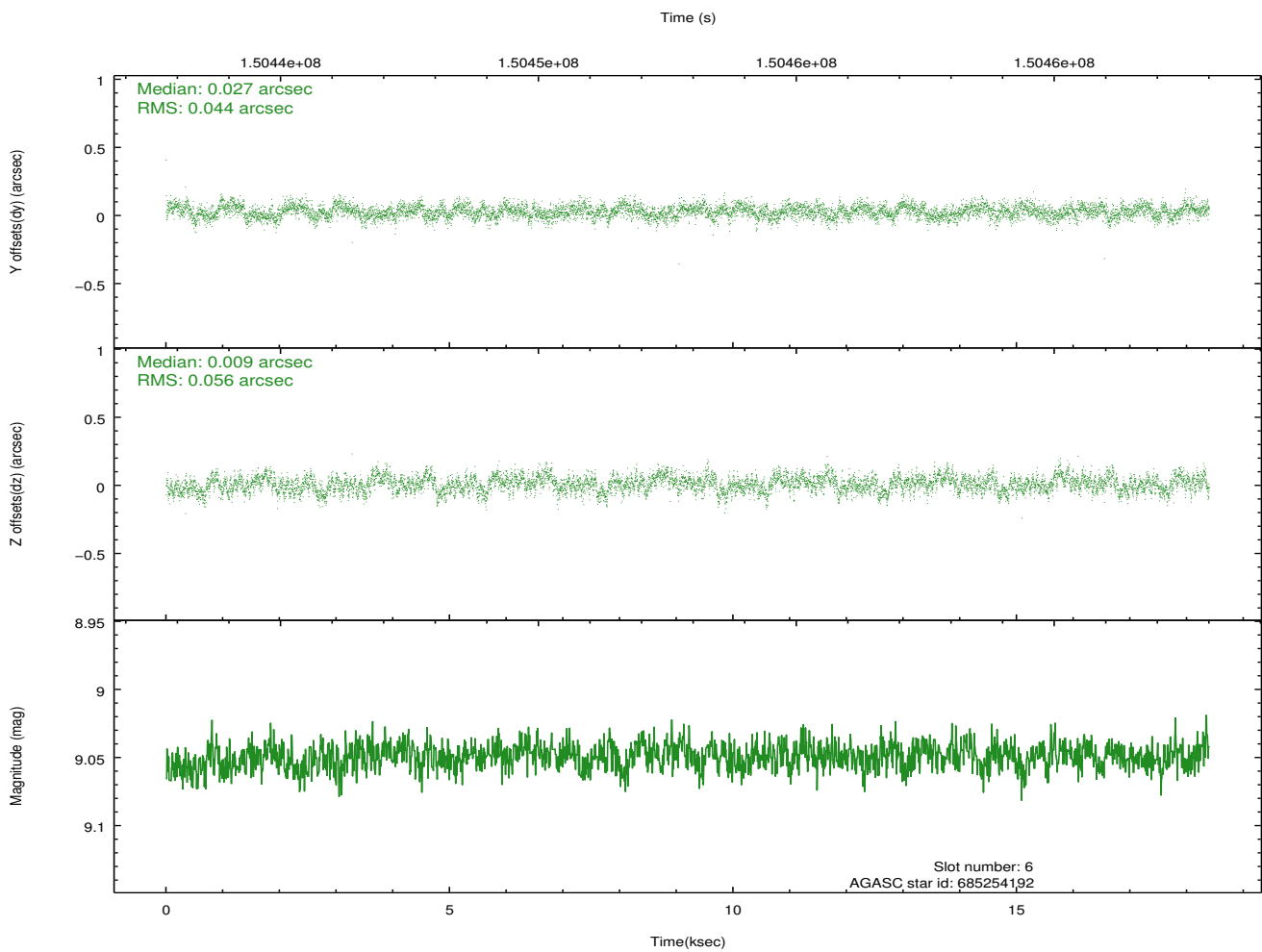
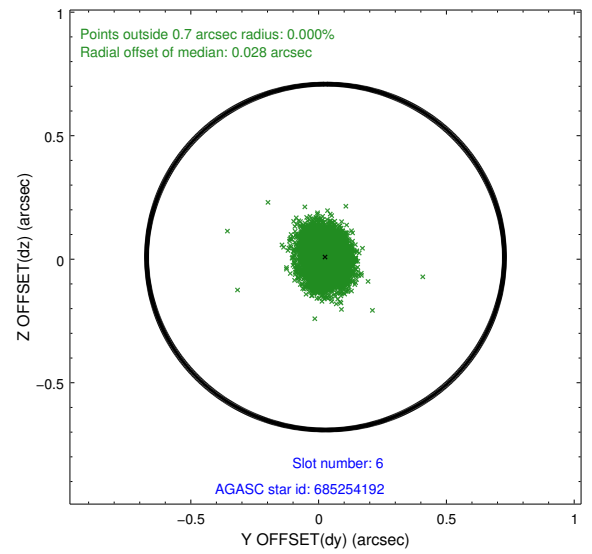
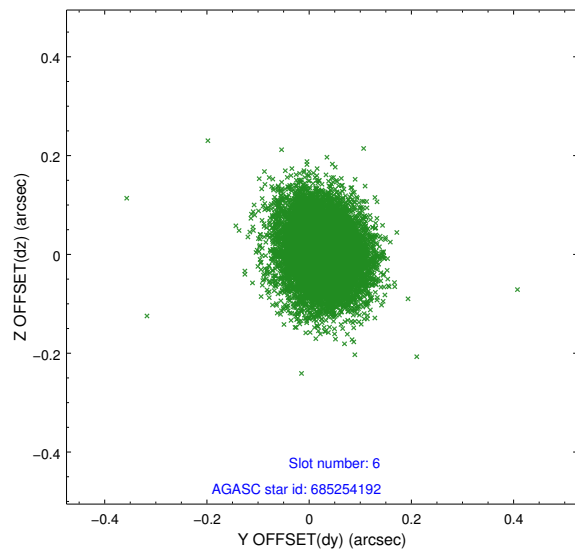
2.4.2 Slot 4



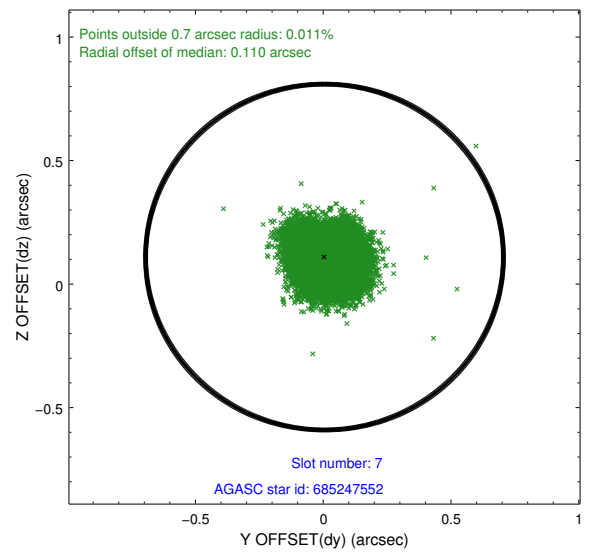
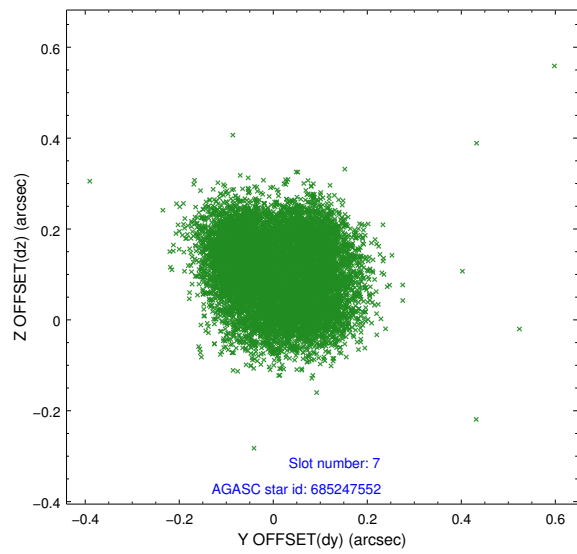
2.4.3 Slot 5



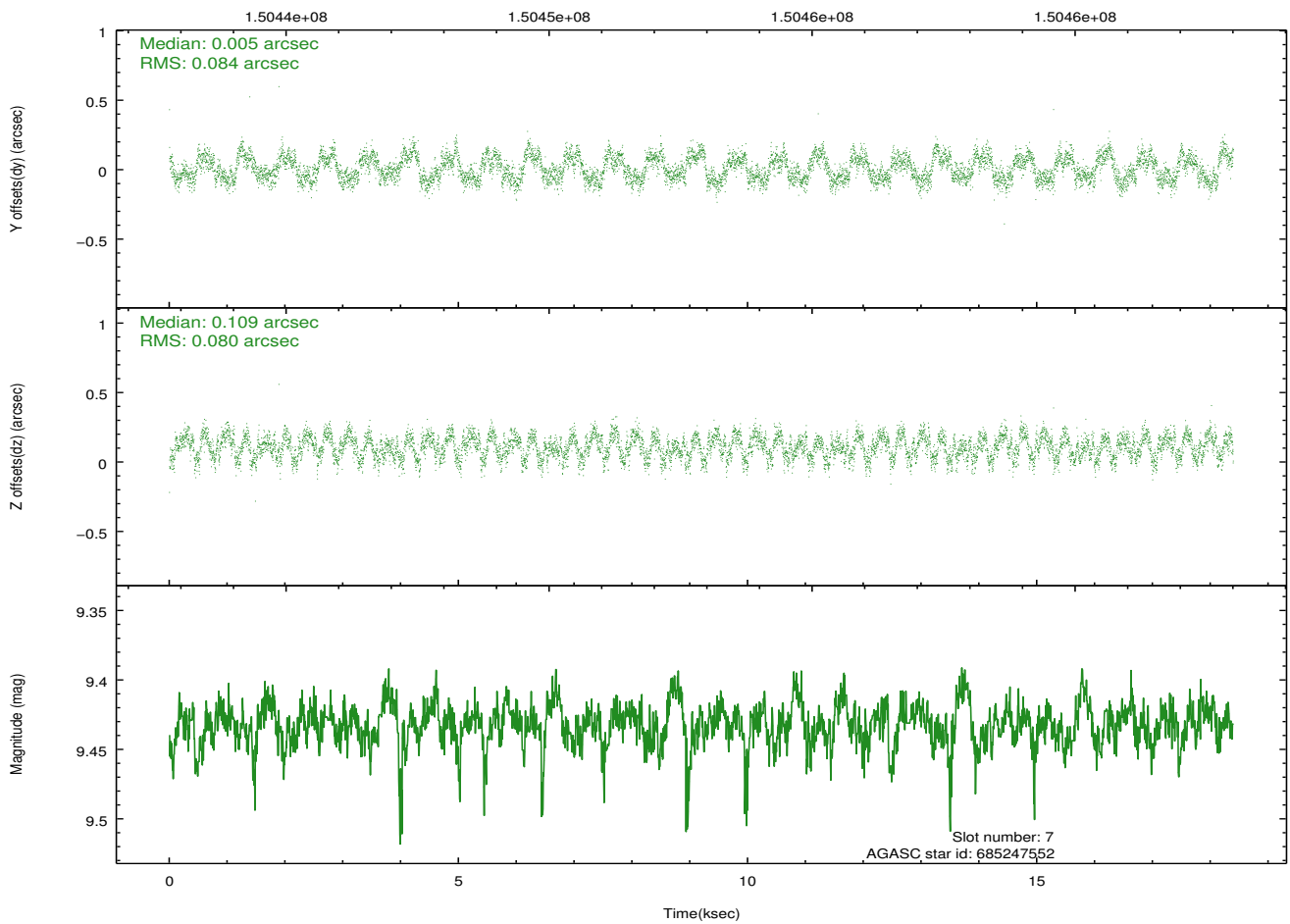
2.4.4 Slot 6



2.4.5 Slot 7

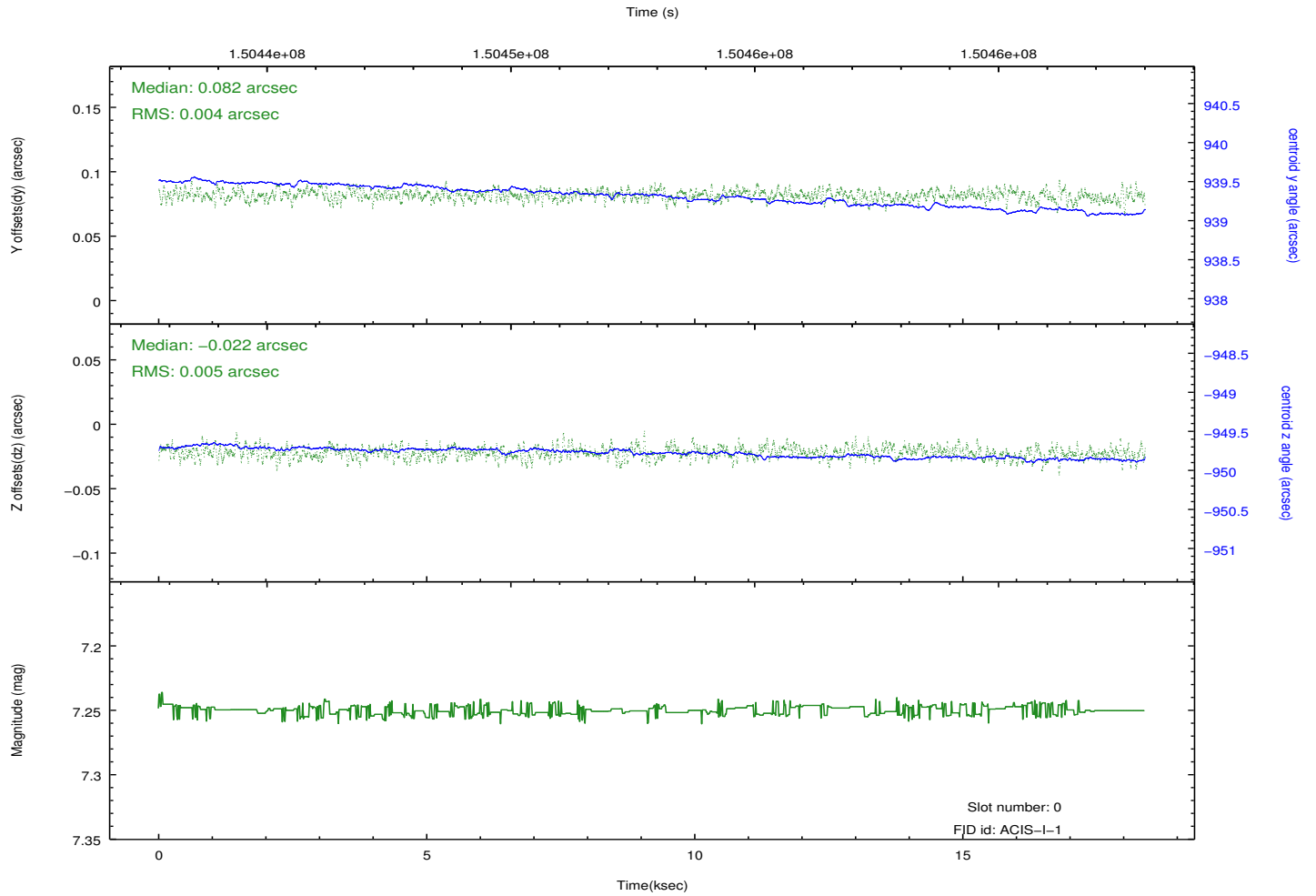
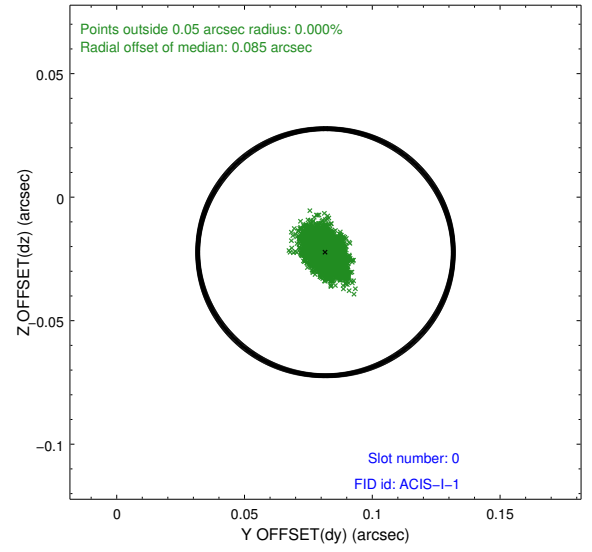
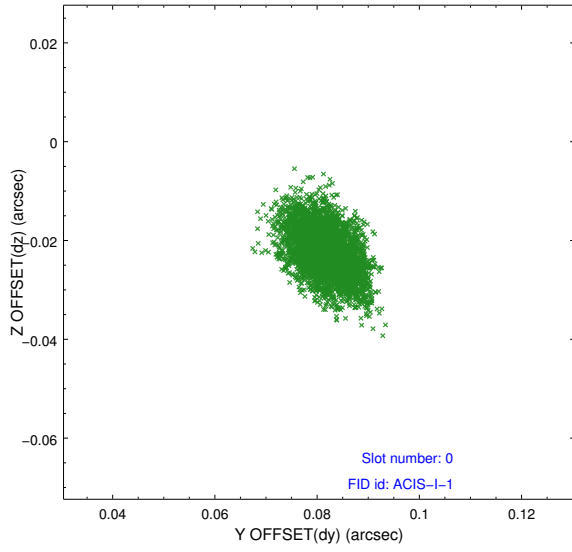


Time (s)

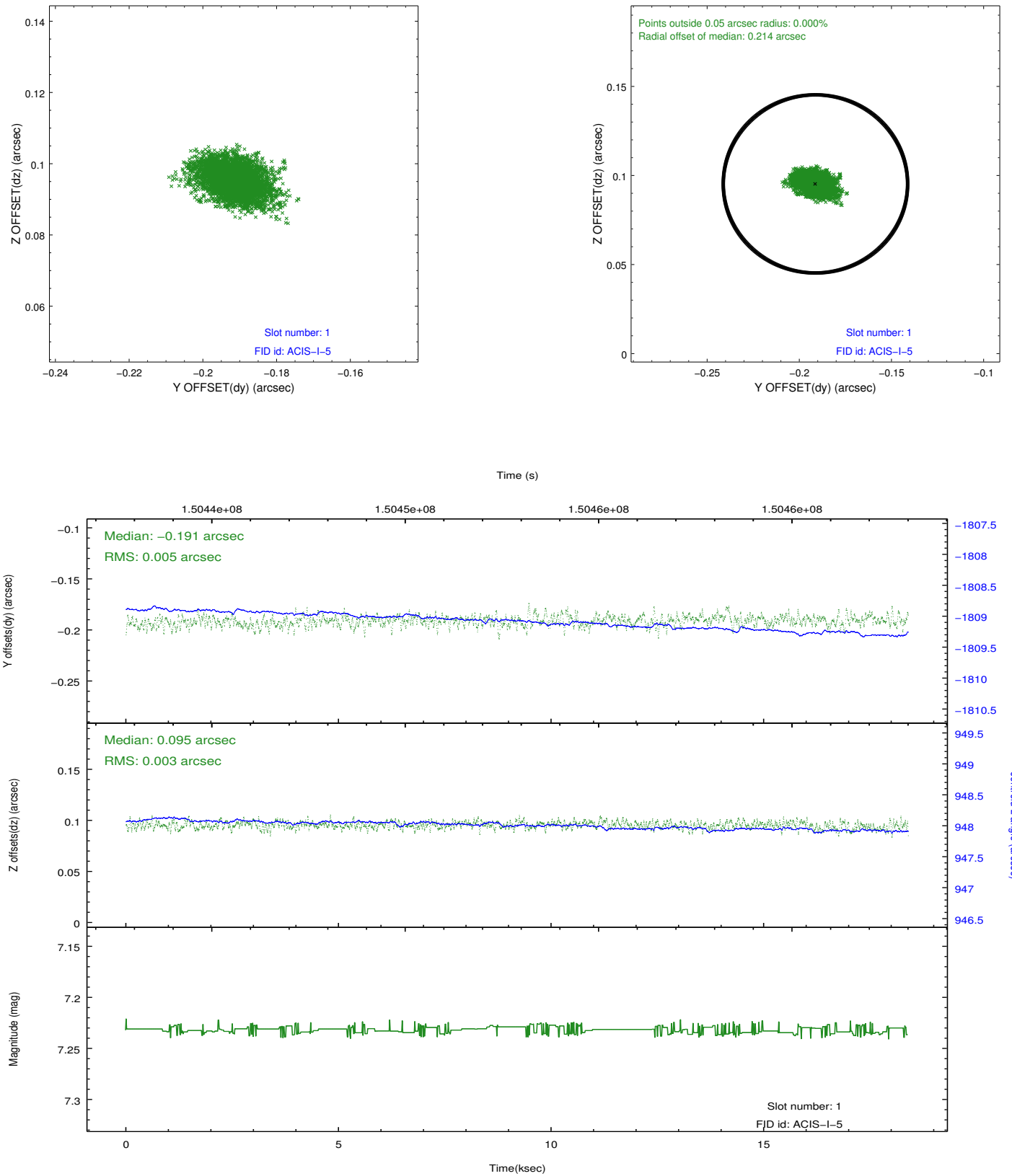


2.5 FID Slots

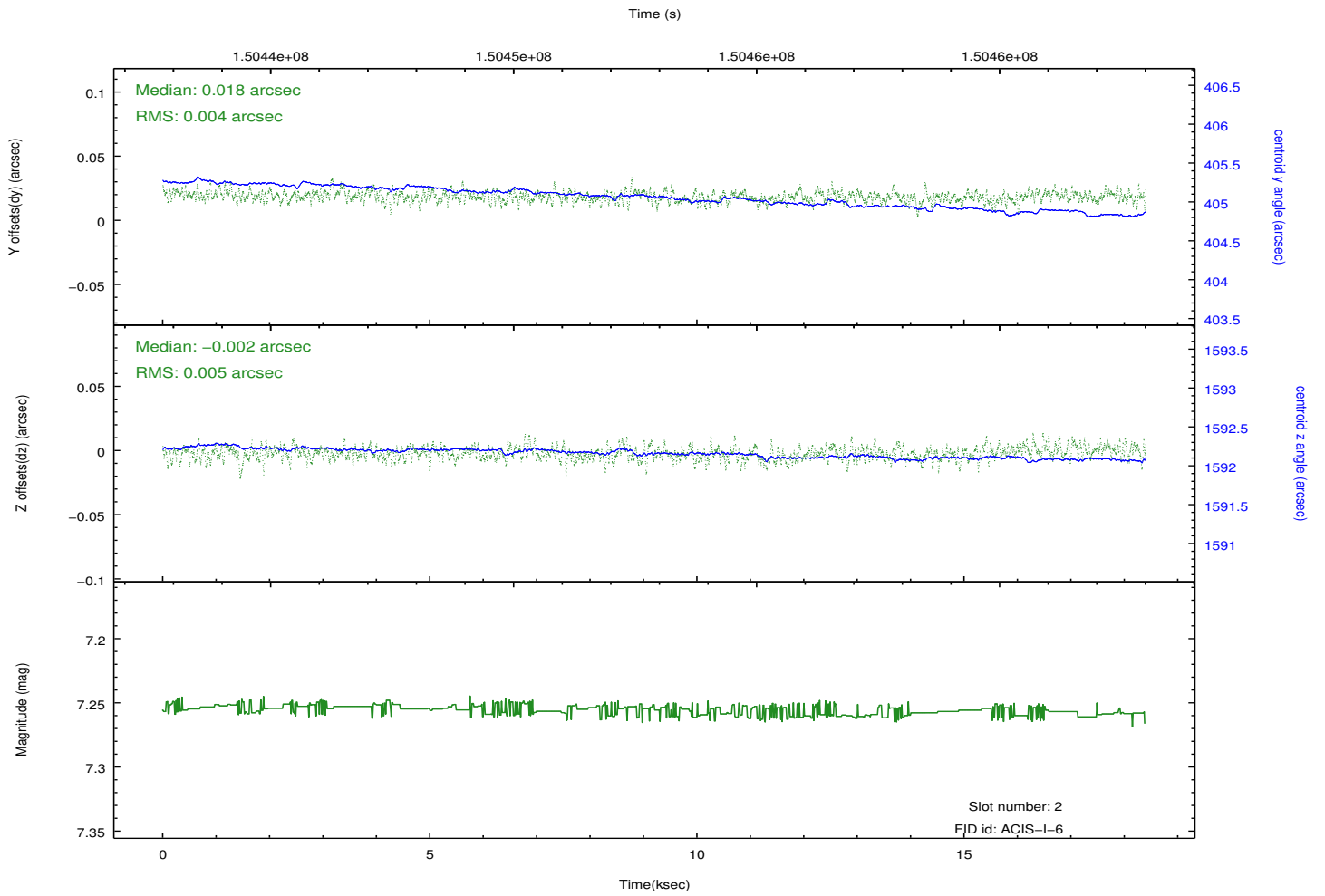
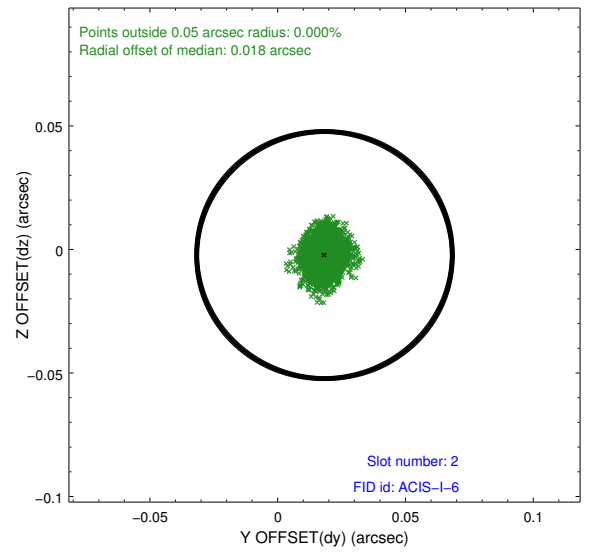
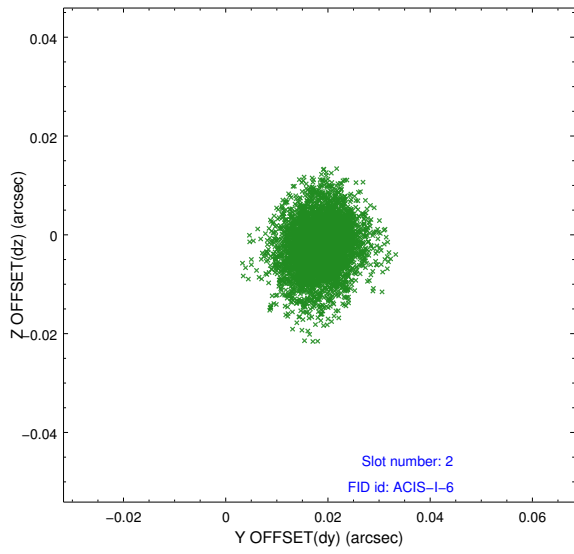
2.5.1 Slot 0



2.5.2 Slot 1



2.5.3 Slot 2



A Summary

A.1 Status

V&V Scientist	Jen Lauer
V&V Date (YYYY-MM-DD)	2012.10.25
V&V Edition	1
V&V Disposition and Status	OK
V&V Charge Time	17.973

A.2 Comments