

# V&V Reference Report

## L2 ASCDS Version : 8.4.5

Observation 364 - L2 Version 5  
Chandra X-Ray Center

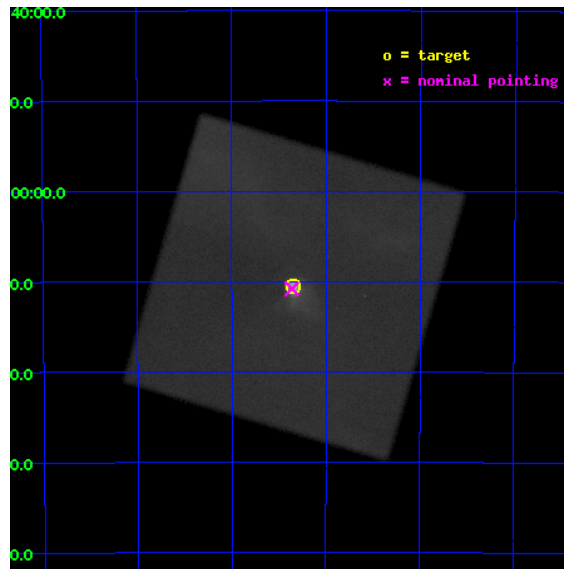
L2 Processing Date : Aug 23 2012

## Contents

<b>1</b>	<b>Front</b>	<b>2</b>
<b>2</b>	<b>OBI</b>	<b>3</b>
2.1	OBI . . . . .	3
2.1.1	Images . . . . .	3
2.1.2	Parameters . . . . .	4
2.1.3	Events . . . . .	4
2.2	Compared Parameters . . . . .	5
2.3	Aspect . . . . .	6
2.4	Star Slots . . . . .	9
2.4.1	Slot 3 . . . . .	9
2.4.2	Slot 4 . . . . .	10
2.4.3	Slot 5 . . . . .	11
2.4.4	Slot 6 . . . . .	12
2.4.5	Slot 7 . . . . .	13
2.5	FID Slots . . . . .	14
2.5.1	Slot 0 . . . . .	14
2.5.2	Slot 1 . . . . .	15
2.5.3	Slot 2 . . . . .	16
<b>A</b>	<b>Summary</b>	<b>17</b>
A.1	Status . . . . .	17
A.2	Comments . . . . .	17

# 1 Front

seq_num	500093	Sequence number
obs_id	364	Observation id
title	SURVEYING THE AFTERMATH OF A STARQUAKE	Proposal title
observer	Prof. David Helfand	Principal investigator
object	PSR B0833-45	Source name
ra_targ	128.83625	Observer's specified target RA [deg]
dec_targ	-45.176583	Observer's specified target Dec [deg]
ra_nom	128.84036618003	Nominal RA [deg]
dec_nom	-45.180212822519	Nominal Dec [deg]
roll_nom	331.45006551972	Nominal Roll [deg]
revision	5	Processing version of data
ontime	48158.601762846	[s]
livetime	47485.880181363	Ontime multiplied by DTCOR
l2events	2836614	Number of level 2 events

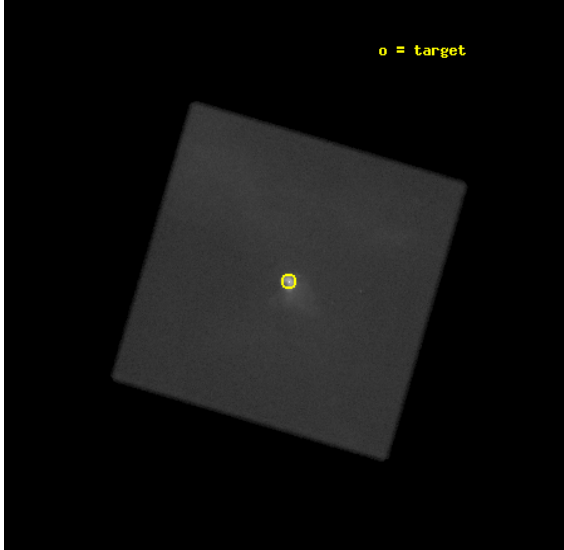


## 2 OBI

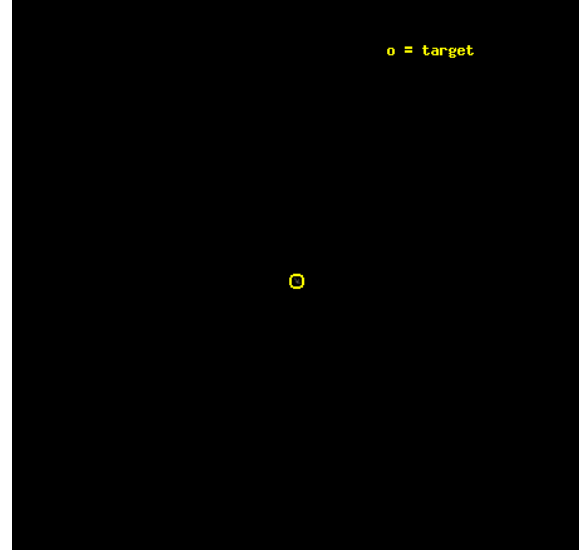
### 2.1 OBI

#### 2.1.1 Images

Level 1 Image



Level 1 Bad Events



### 2.1.2 Parameters

obi_num	0	Obi number	sched_exp_time	48000.000000	[s] Scheduled observation exposure time
ascdsver	8.4.5	Processing system revision	ontime	48158.601762846	[s]
caldbver	4.5.1.1	&#160	l1events	3779081	Number of level 1 events
date	2012-08-23T02:07:50	Date and time of file creation			
revision	5	Processing version of data			

### 2.1.3 Events

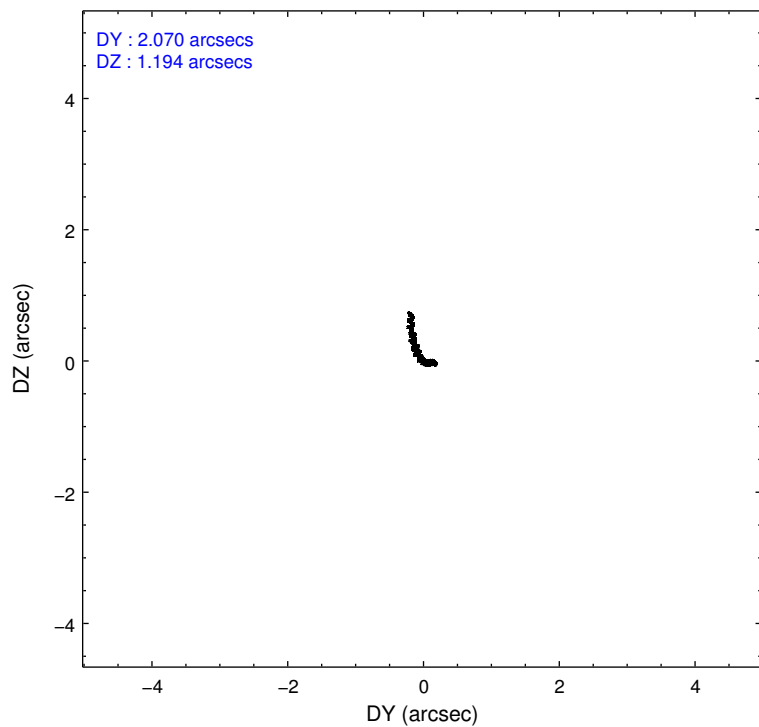
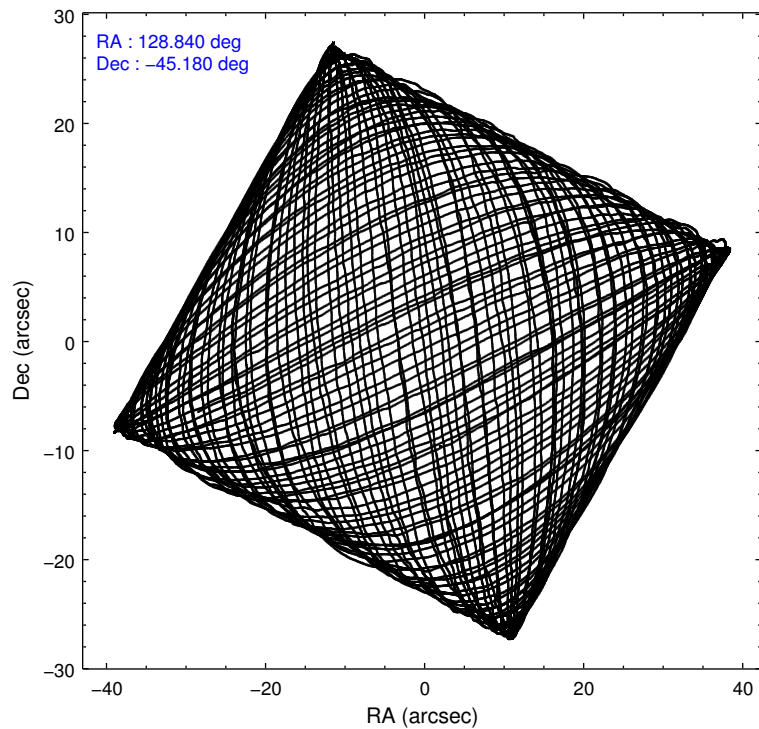
#### Level 1 Events

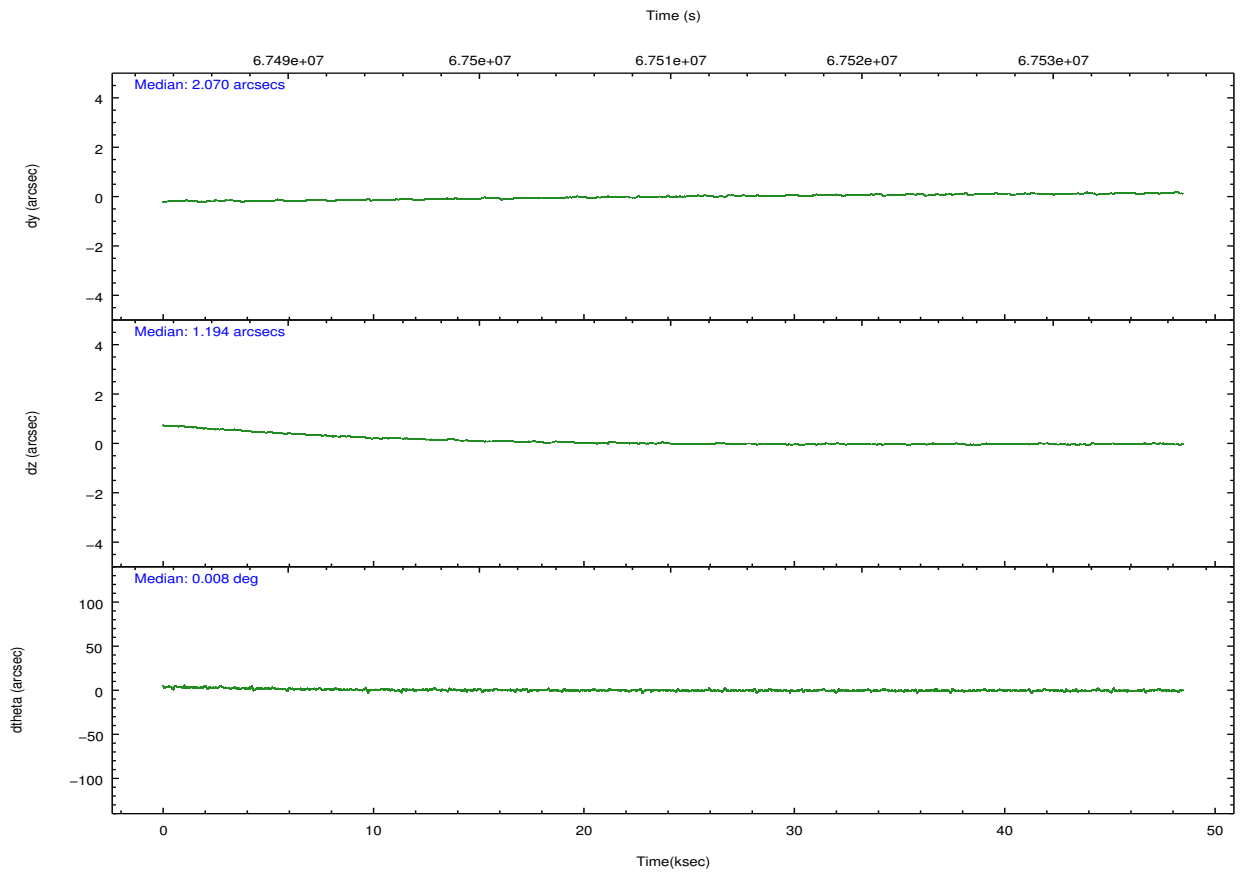
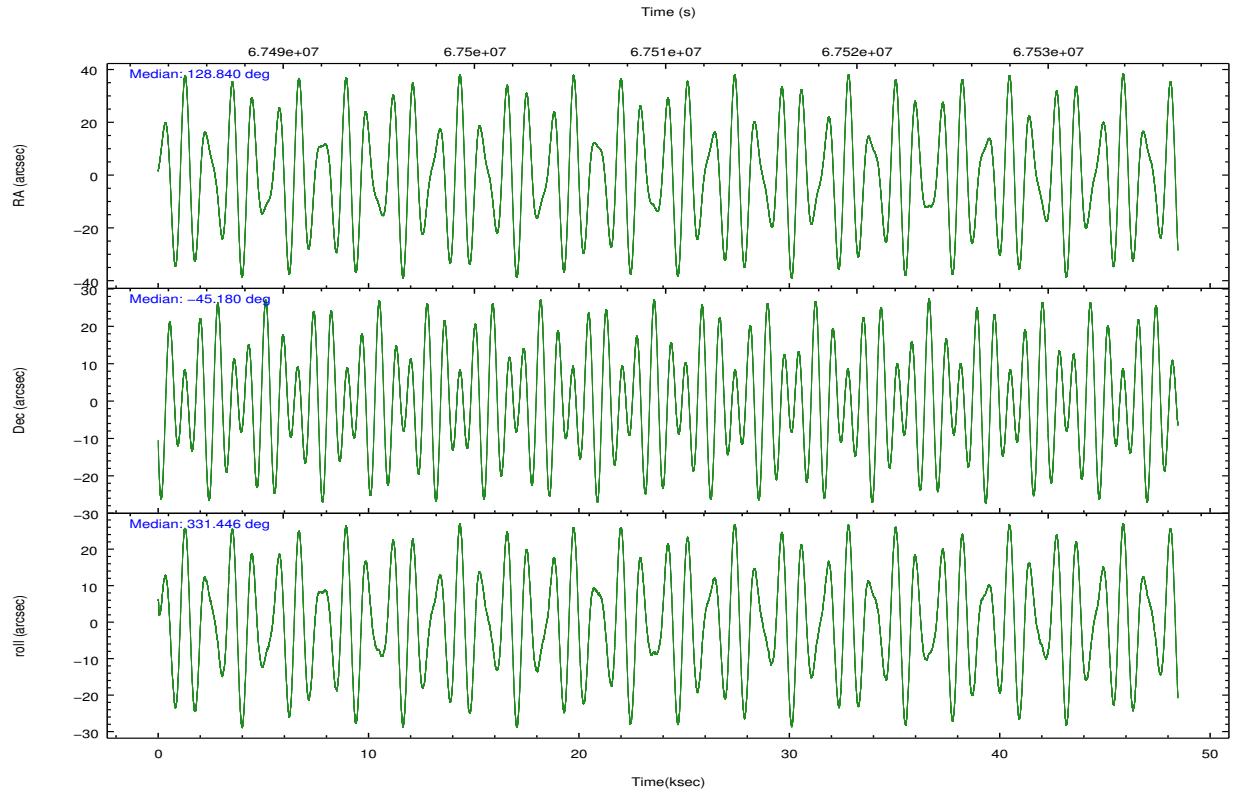
	<b>segment 0</b>
level 1 events	3779081
rejected events	7356
rejected %	0%

## 2.2 Compared Parameters

Parameter	Planned	Actual	Parameter	Planned	Actual
Instrument	HRC	HRC	Obspar format version number	7	7
Detector	HRC-I	HRC-I	Obspar file type	PREDICTED	ACTUAL
Grating	NONE	NONE	Obspar update status	NONE	UPDATED
Data mode	OBSERVING	OBSERVING			
Observation mode	POINTING	POINTING			
[deg] Pointing RA	128.801539	128.8403661800327			
[deg] Pointing Dec	-45.181134	-45.18021282251861			
[deg] Pointing Roll	331.518015	331.4500655197215			
[mm] SIM focus pos	-1.040293	-1.038866356238299			
[mm] SIM defocus	0	0.001426264420575141			
[mm] SIM translation stage pos	126.985494	126.9854943052878			
[mm] SIM translation stage offset	0	-5.413686238853188e-06			
[s] Observation start time (MET)	67486358.184000	67485302.699802			
Observation start date	2000-02-21T02:11:34	2000-02-21T01:55:02			
[s] Observation end time (MET)	67534358.184000	67535299.63913199			
Observation end date	2000-02-21T15:31:34	2000-02-21T15:48:19			

## 2.3 Aspect



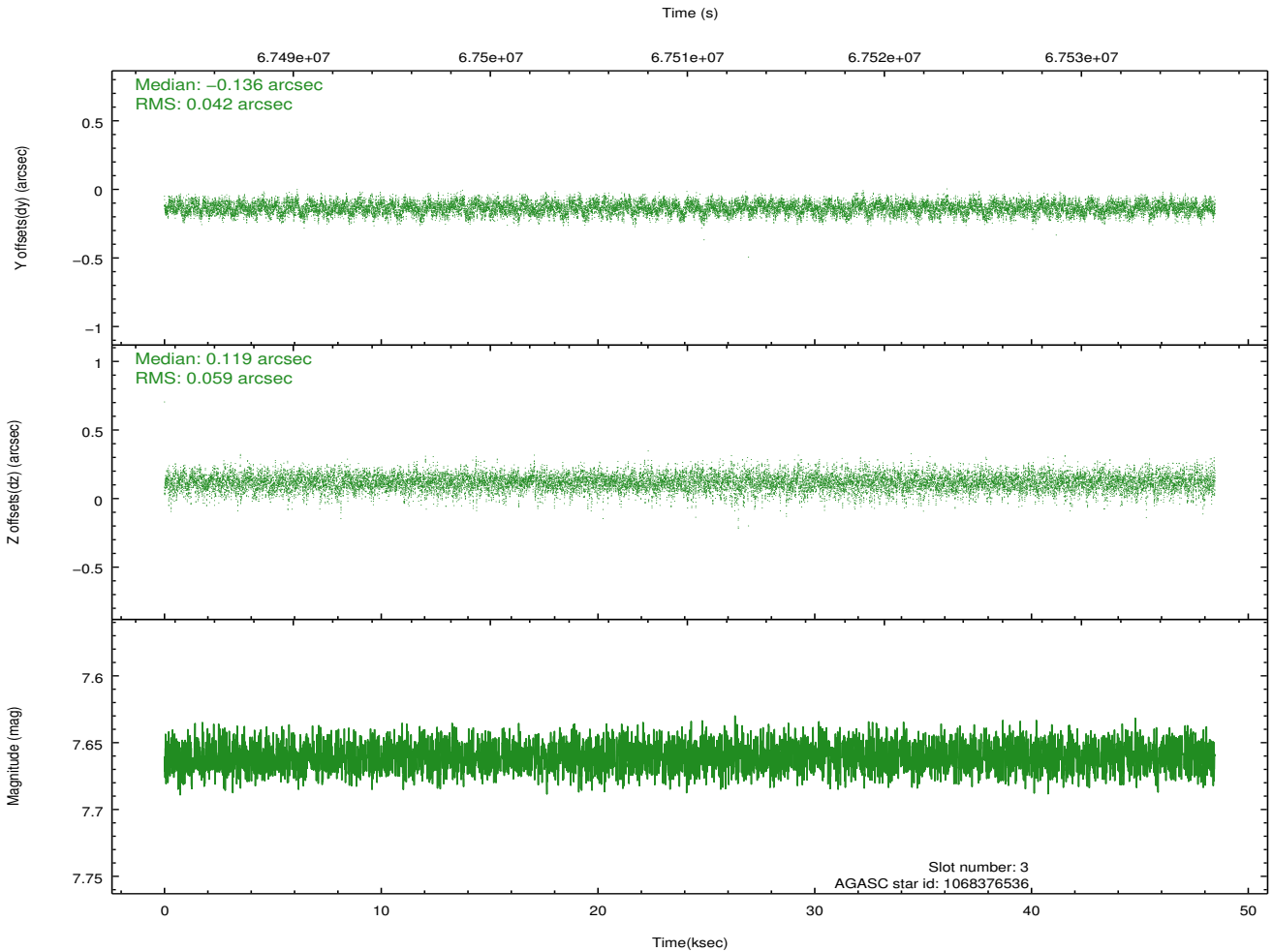
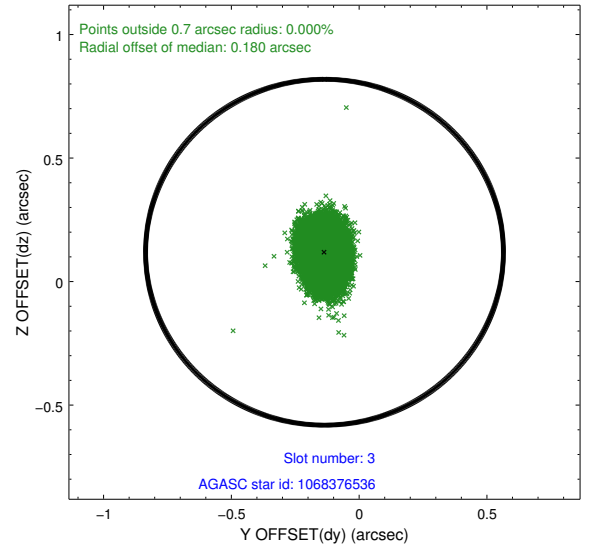
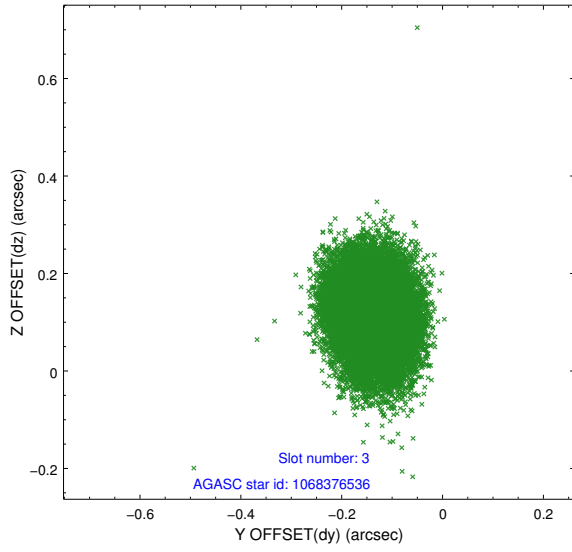


### Slot Statistics

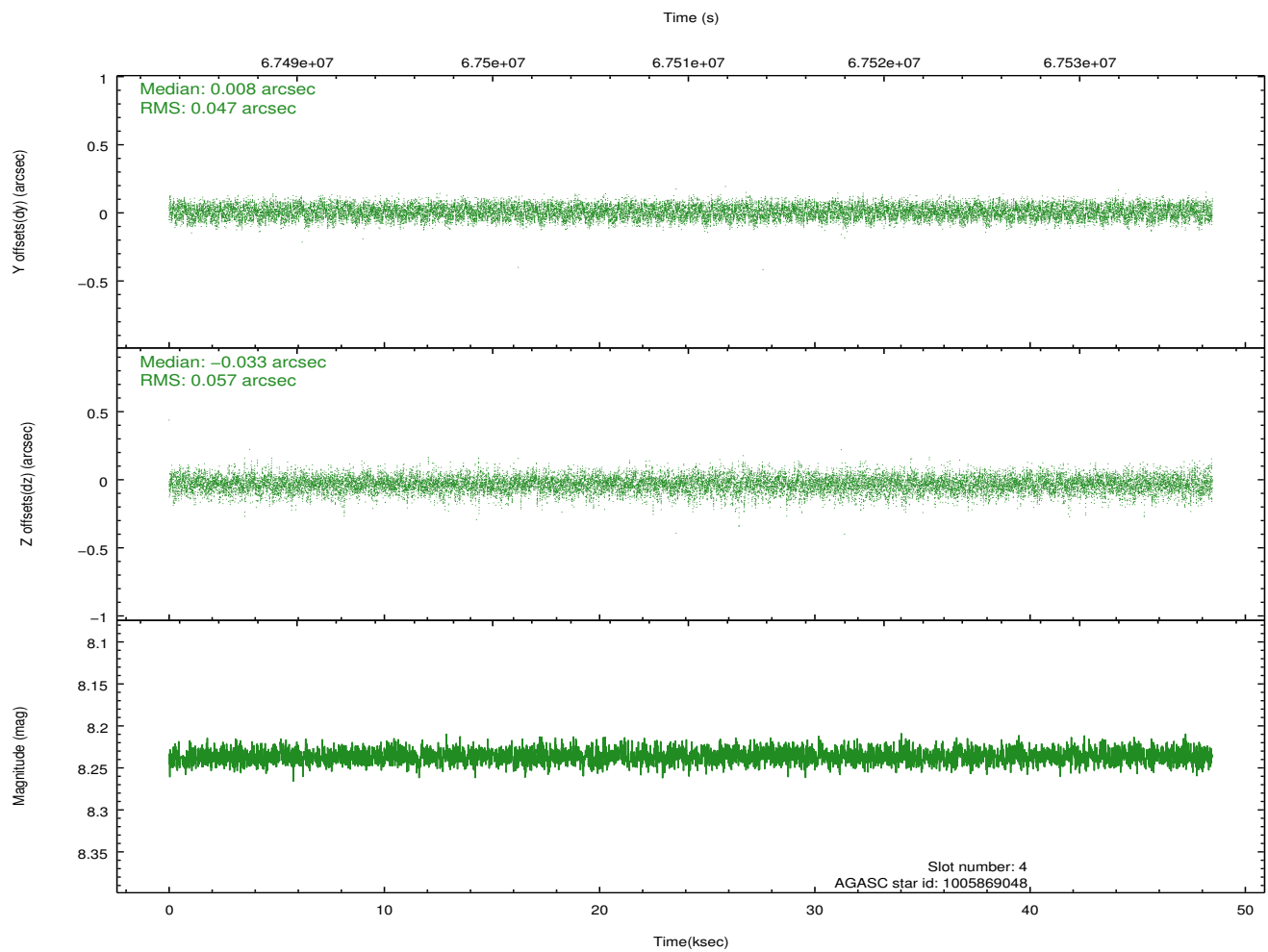
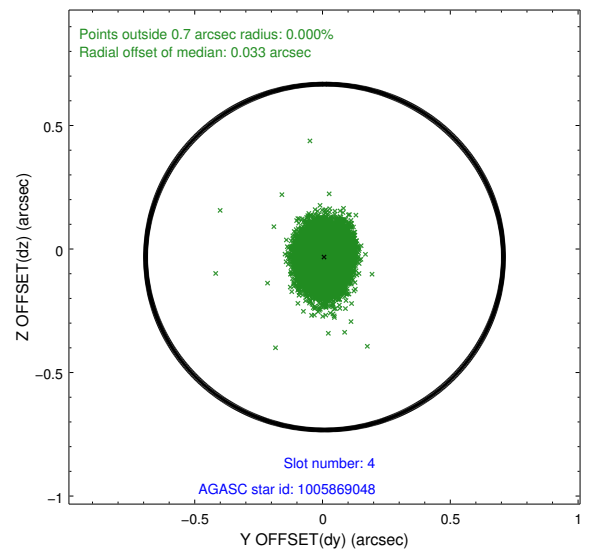
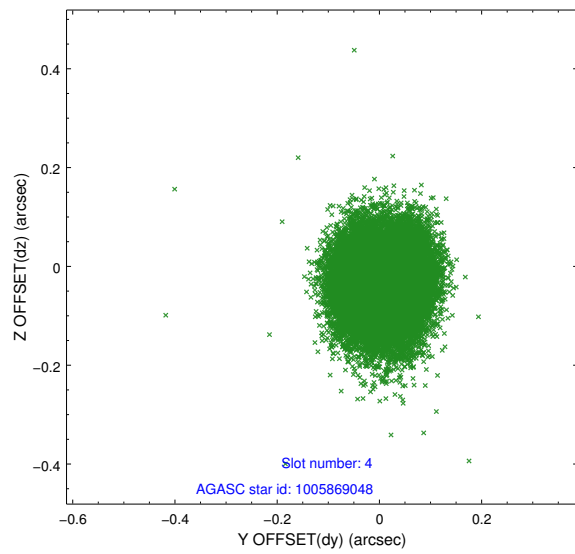
slot	status	id	mag	n_pts	med_dy	med_dz	dr1	dr2	ra	dec	mean_y	mean_z
0	FID	HRC-I-1	6.93	11822	0.015	-0.031	0.010	0.018	0.000000	0.000000	-757.48	-1289.08
1	FID	HRC-I-2	6.97	11822	0.042	-0.006	0.011	0.018	0.000000	0.000000	855.12	-1290.71
2	FID	HRC-I-3	7.01	11822	0.061	-0.052	0.009	0.020	0.000000	0.000000	-1185.88	1015.35
3	GUIDE	1068376536	7.66	23638	-0.136	0.119	0.075	0.128	129.556408	-45.593502	2383.57	-405.74
4	GUIDE	1005869048	8.24	23644	0.008	-0.033	0.078	0.127	128.429058	-44.495949	-2015.99	1709.76
5	GUIDE	1005872888	8.42	23642	-0.013	0.004	0.073	0.125	128.718363	-44.887099	-691.30	829.02
6	GUIDE	1068377720	10.02	23589	0.171	-0.089	0.126	0.206	129.496947	-45.342429	1827.35	321.99
7	GUIDE	1068253552	9.87	23617	-0.030	0.002	0.131	0.214	127.845362	-45.516165	-1537.82	-2223.22

## 2.4 Star Slots

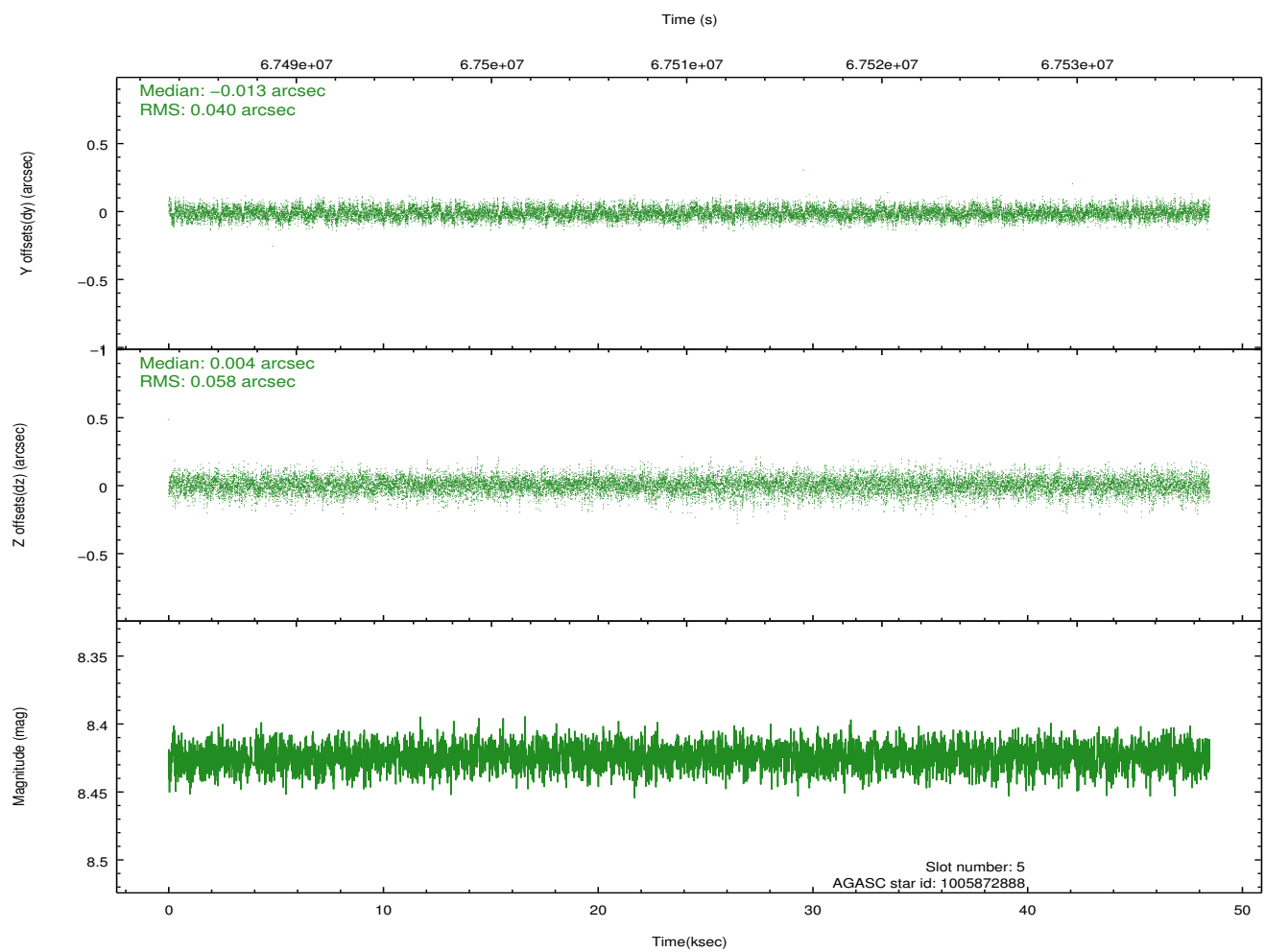
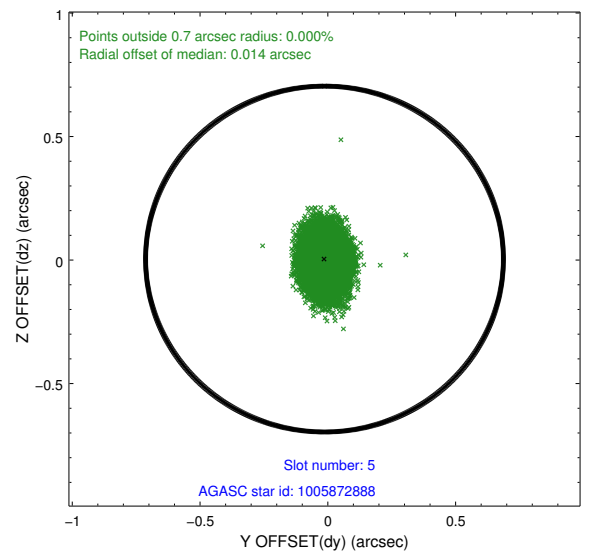
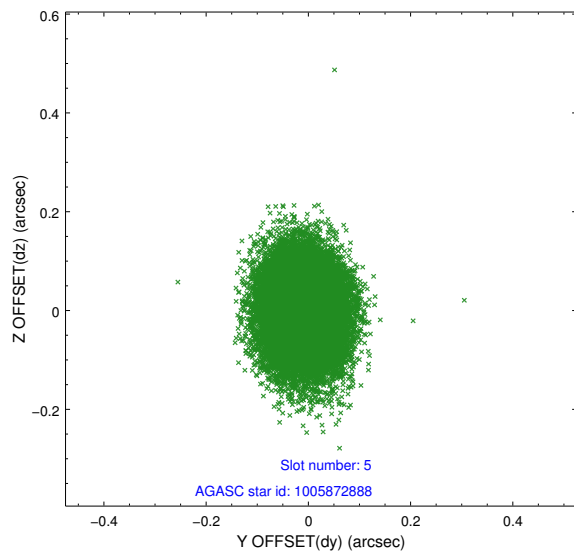
### 2.4.1 Slot 3



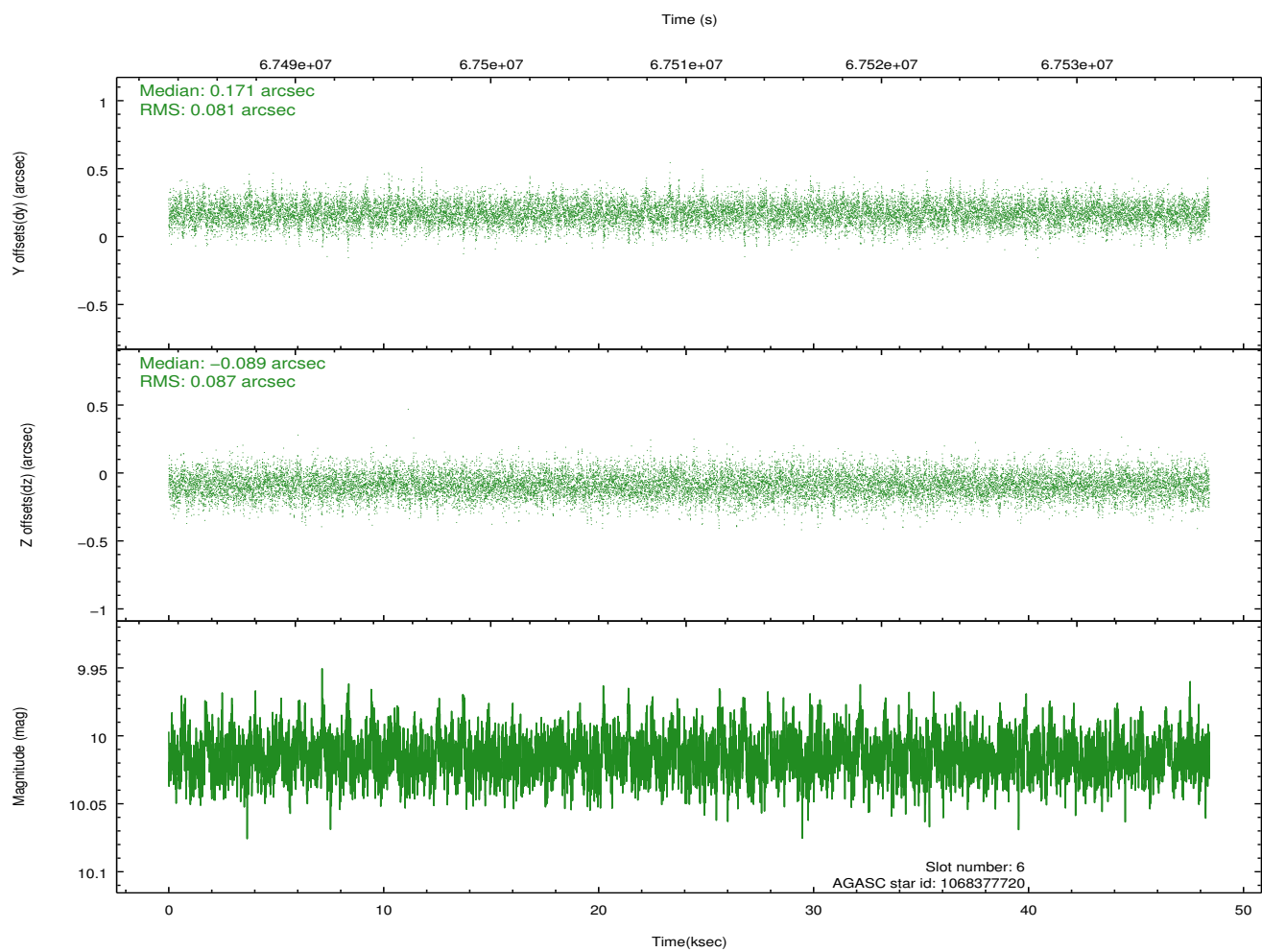
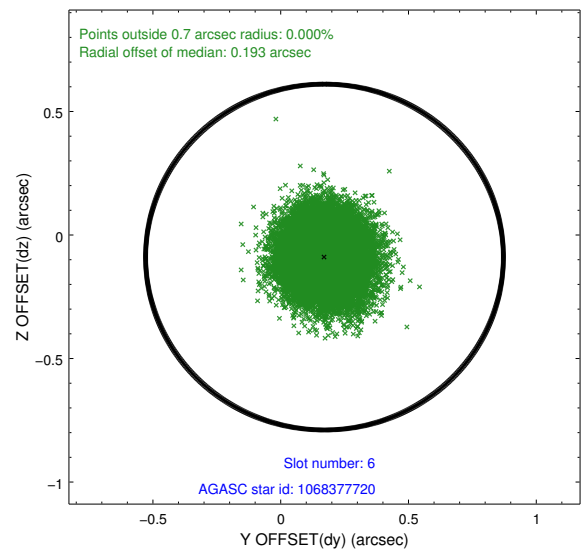
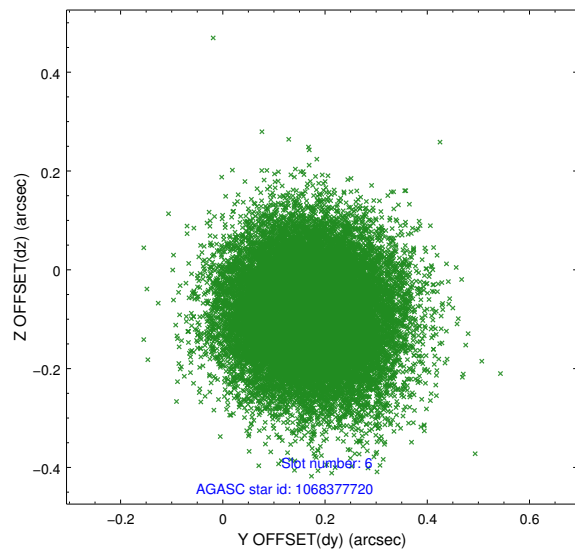
## 2.4.2 Slot 4



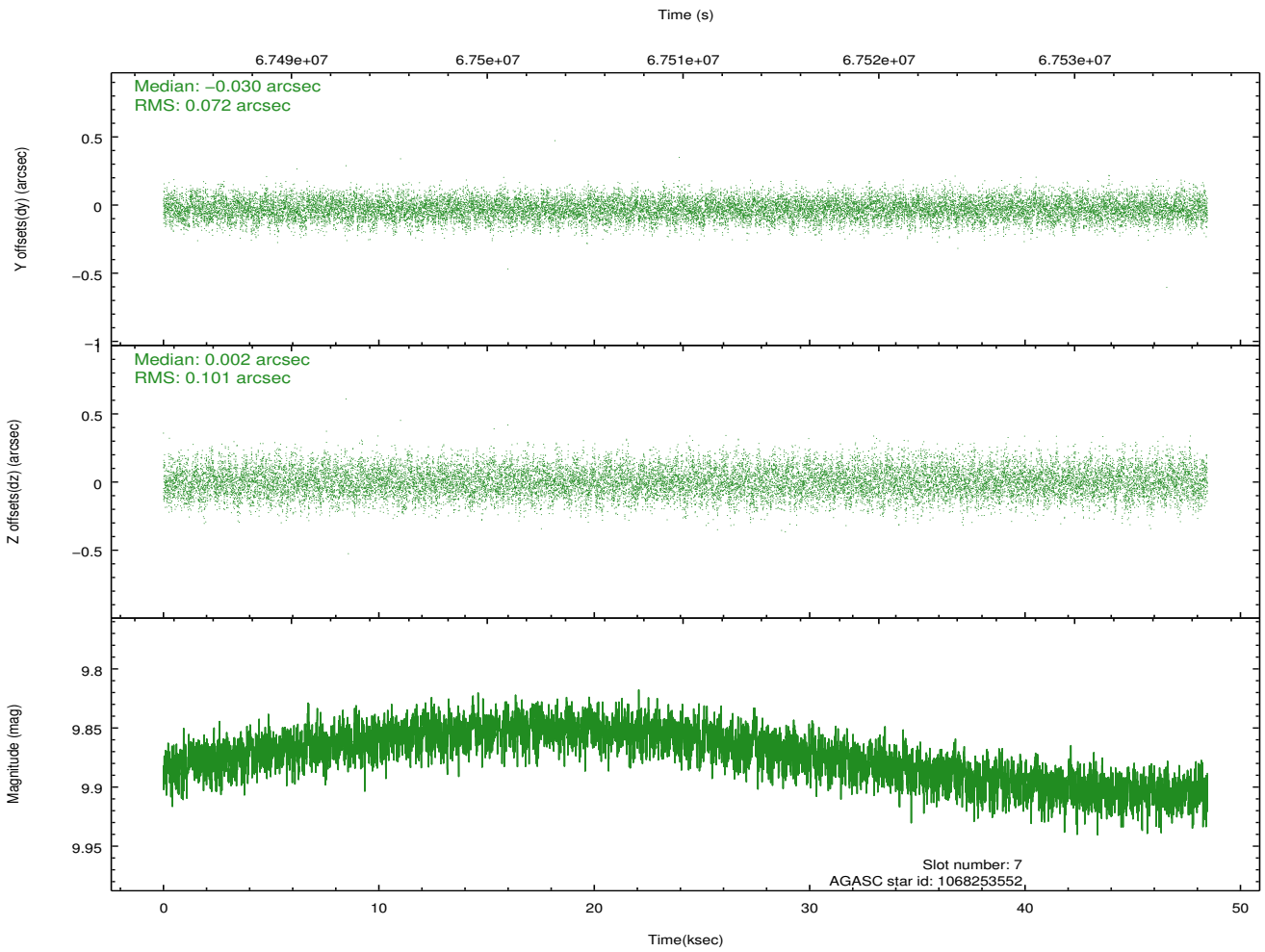
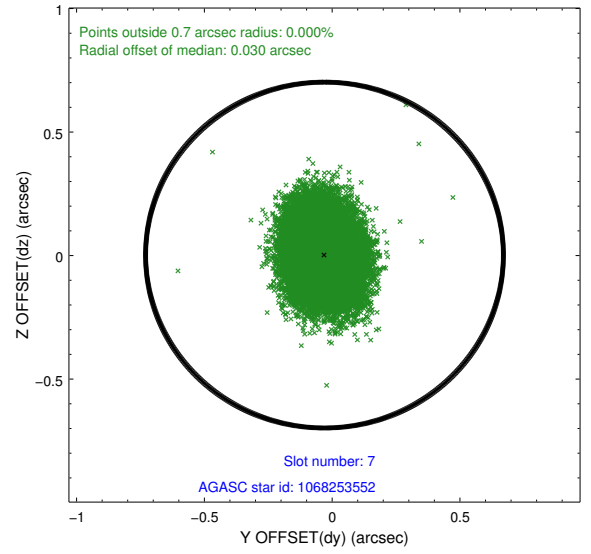
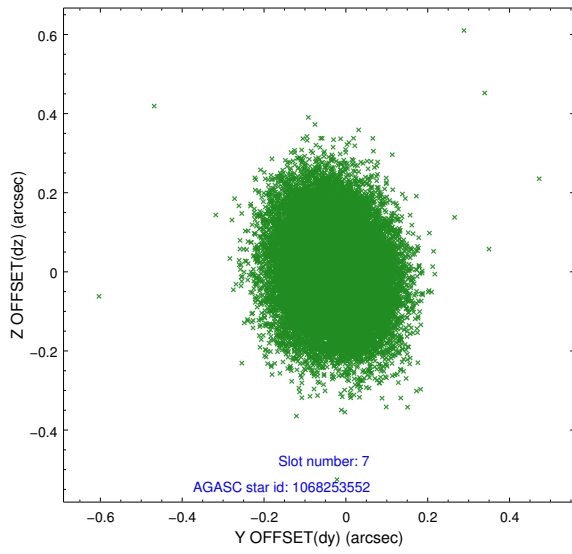
### 2.4.3 Slot 5



## 2.4.4 Slot 6

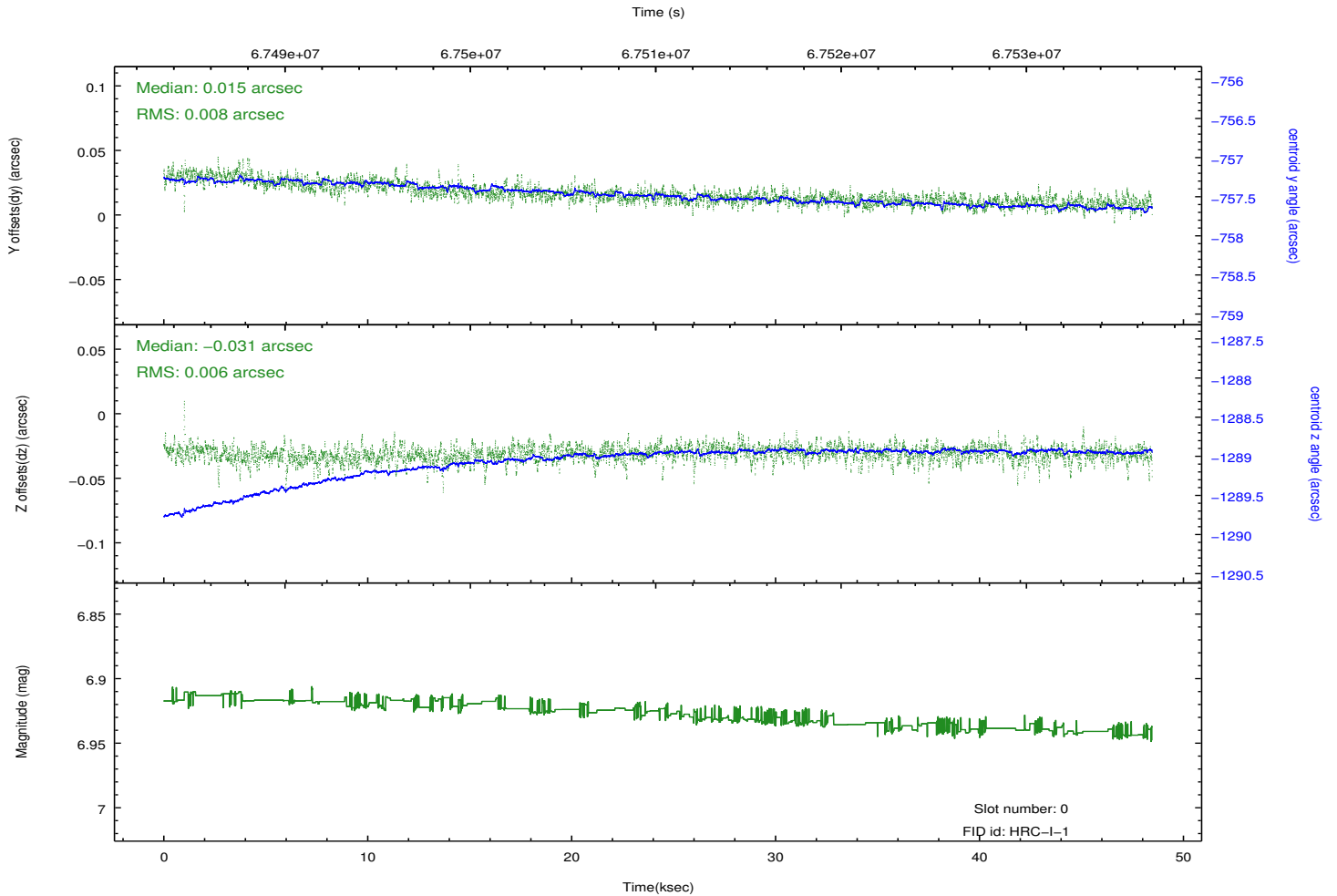
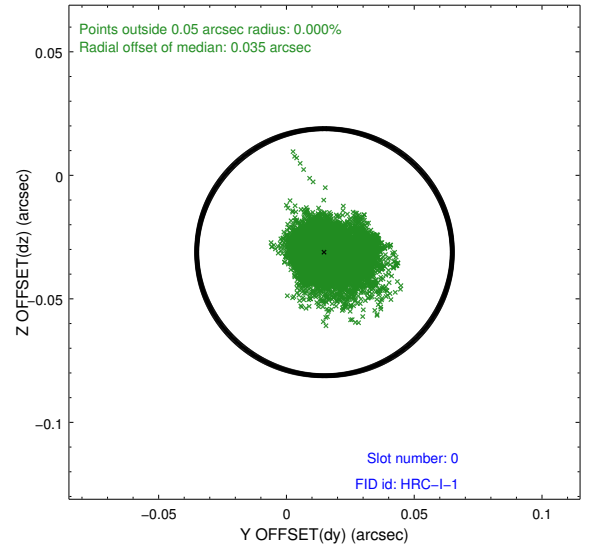
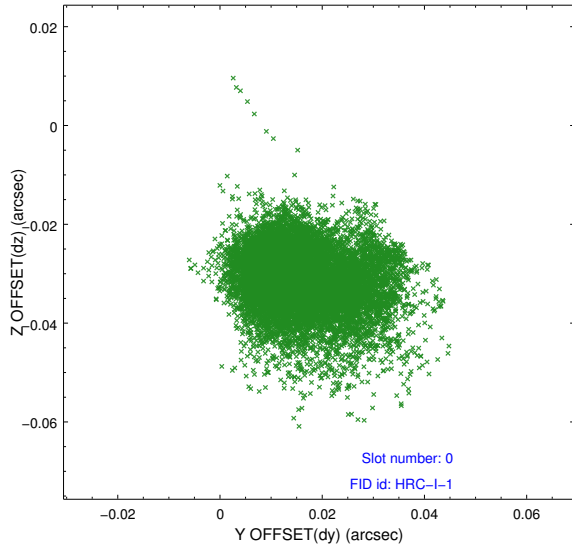


### 2.4.5 Slot 7

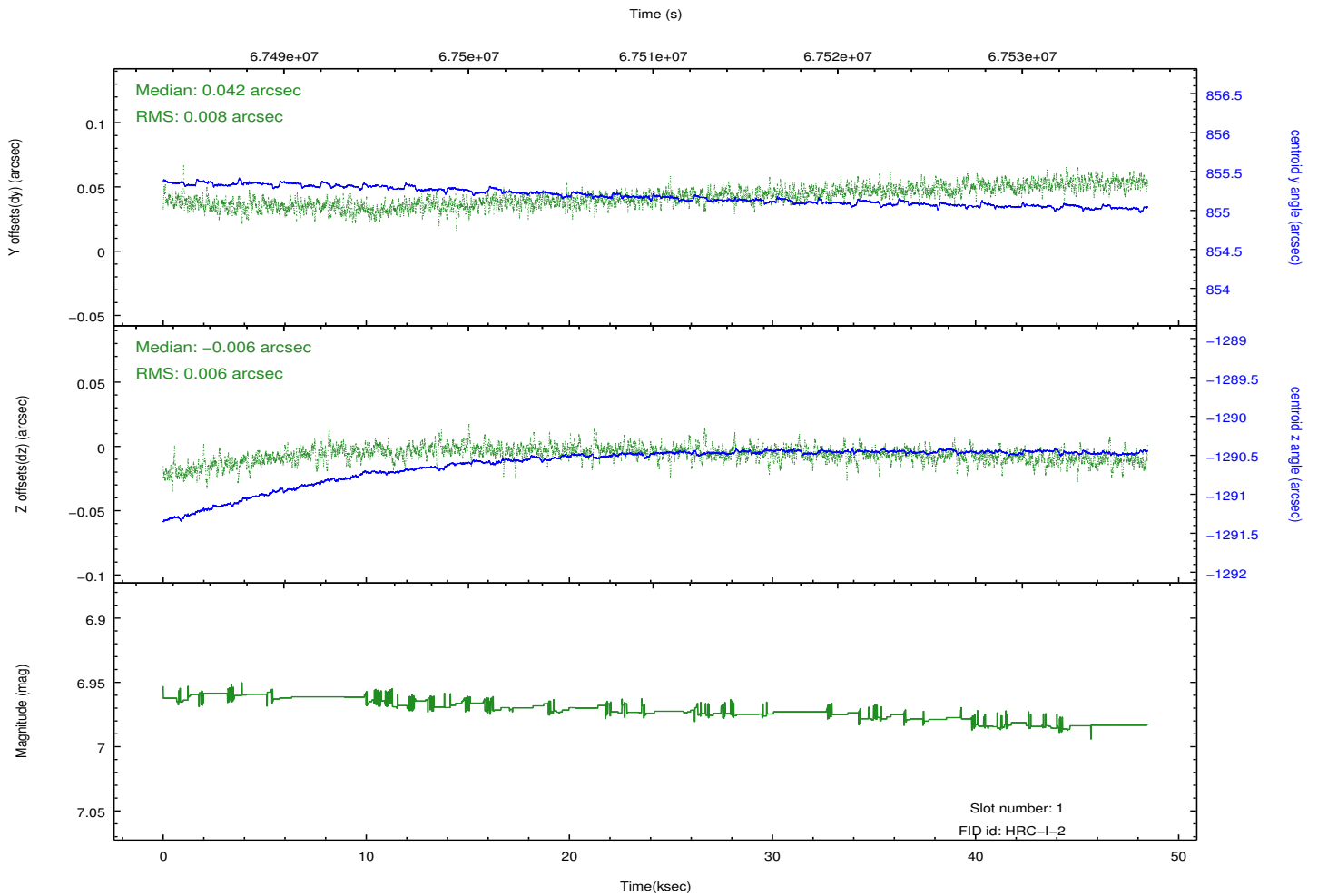
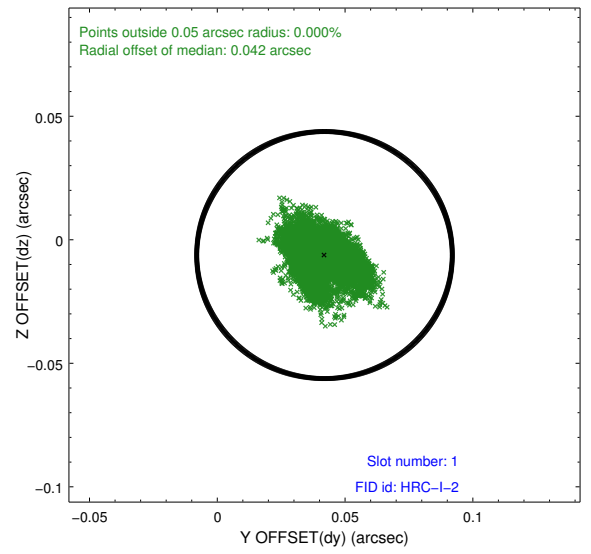
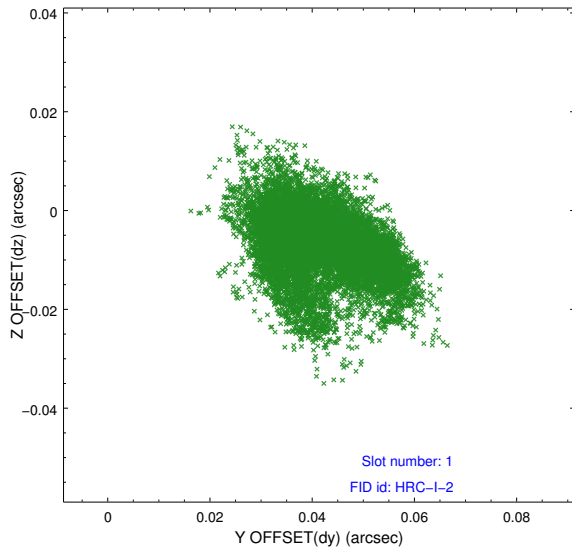


## 2.5 FID Slots

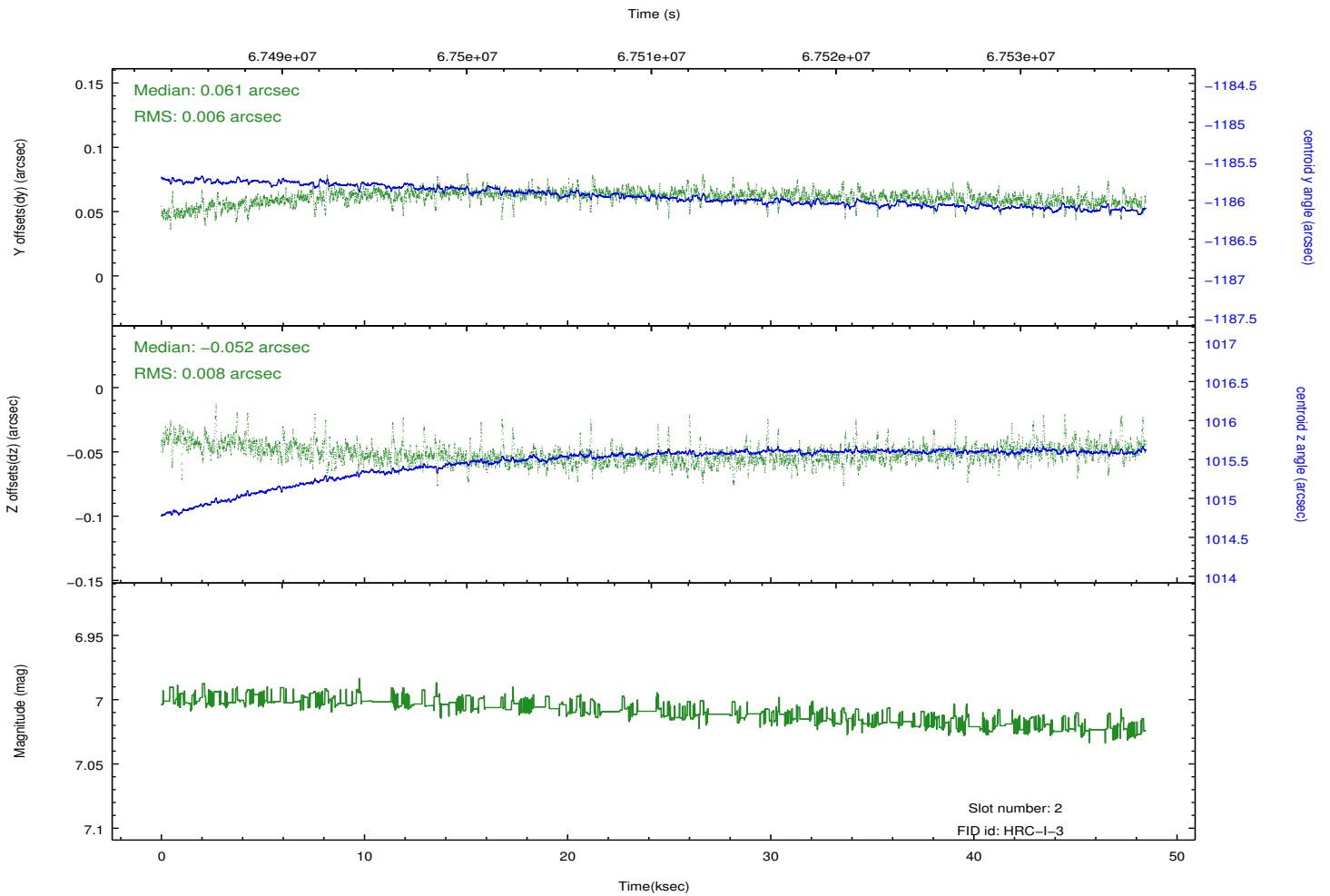
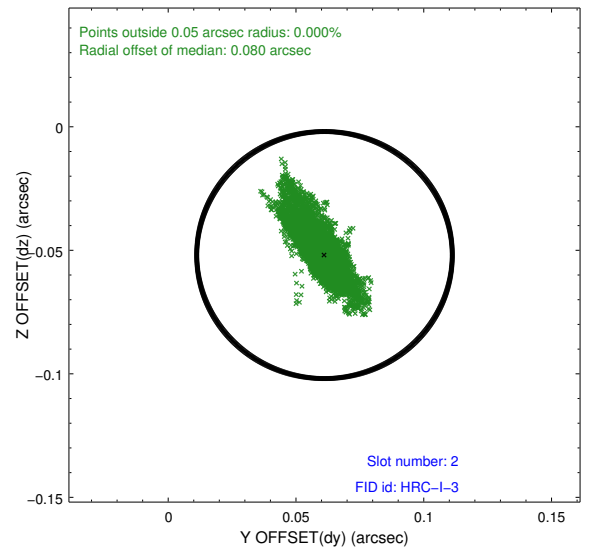
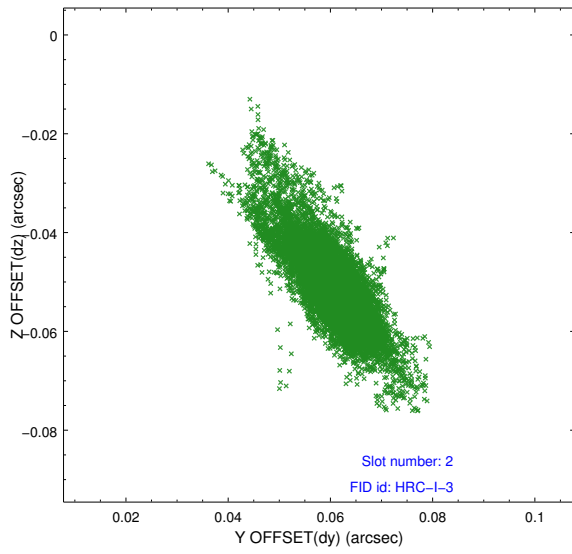
### 2.5.1 Slot 0



## 2.5.2 Slot 1



### 2.5.3 Slot 2



# A Summary

## A.1 Status

V&V Scientist	Jen Lauer
V&V Date (YYYY-MM-DD)	2012.08.23
V&V Edition	1
V&V Disposition and Status	OK
V&V Charge Time	48.159

## A.2 Comments

Monitor constraint met, follows obs1518 by 32 days.