

V&V Reference Report

L2 ASCDS Version : 8.4.5

Observation 3694 - L2 Version 4
Chandra X-Ray Center

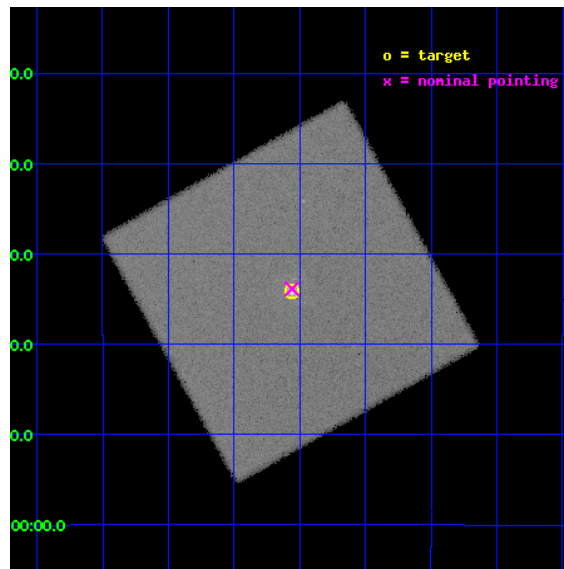
L2 Processing Date : Oct 28 2012

Contents

1	Front	2
2	OBI	3
2.1	OBI	3
2.1.1	Images	3
2.1.2	Parameters	4
2.1.3	Events	4
2.2	Compared Parameters	5
2.3	Aspect	6
2.4	Star Slots	9
2.4.1	Slot 3	9
2.4.2	Slot 4	10
2.4.3	Slot 5	11
2.4.4	Slot 6	12
2.4.5	Slot 7	13
2.5	FID Slots	14
2.5.1	Slot 0	14
2.5.2	Slot 1	15
2.5.3	Slot 2	16
A	Summary	17
A.1	Status	17
A.2	Comments	17

1 Front

seq_num	590306	Sequence number
obs_id	3694	Observation id
title	AO4A OBSERVATIONS OF THE STANDARD CANDLES CAS A AND G21.5-09	Propo
observer	Dr. CXC Calibration	Principal investigator
object	G21.5-0.9	Source name
ra_targ	278.389583	Observer's specified target RA [deg]
dec_targ	-10.568528	Observer's specified target Dec [deg]
ra_nom	278.39003869119	Nominal RA [deg]
dec_nom	-10.564437272264	Nominal Dec [deg]
roll_nom	105.89562561459	Nominal Roll [deg]
revision	4	Processing version of data
ontime	18390.550778568	[s]
livetime	18290.778625745	Ontime multiplied by DTCOR
l2events	541697	Number of level 2 events

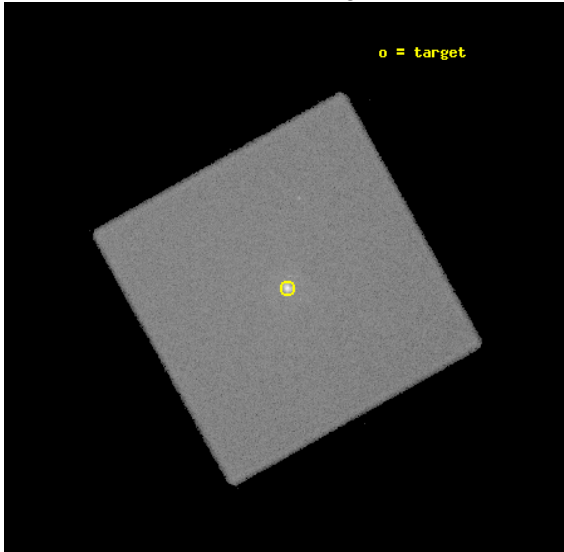


2 OBI

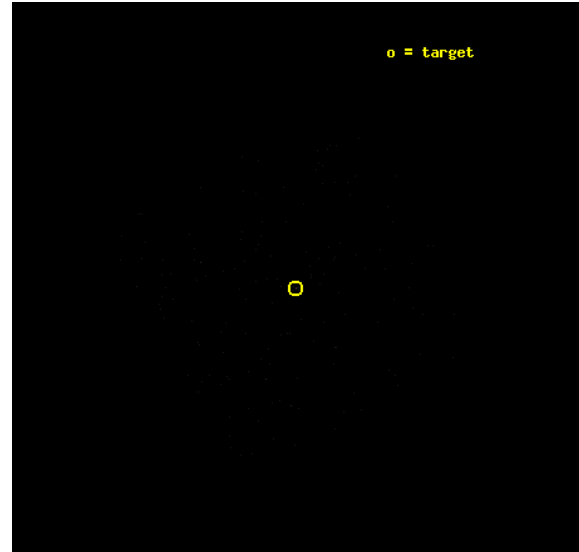
2.1 OBI

2.1.1 Images

Level 1 Image



Level 1 Bad Events



2.1.2 Parameters

obi_num	1	Obi number	sched_exp_time	18500.000000	[s] Scheduled observation exposure time
ascdsver	8.4.5	Processing system revision	ontime	18390.550778568	[s]
caldbver	4.5.2	 	l1events	861040	Number of level 1 events
date	2012-10-28T13:27:17	Date and time of file creation			
revision	4	Processing version of data			

2.1.3 Events

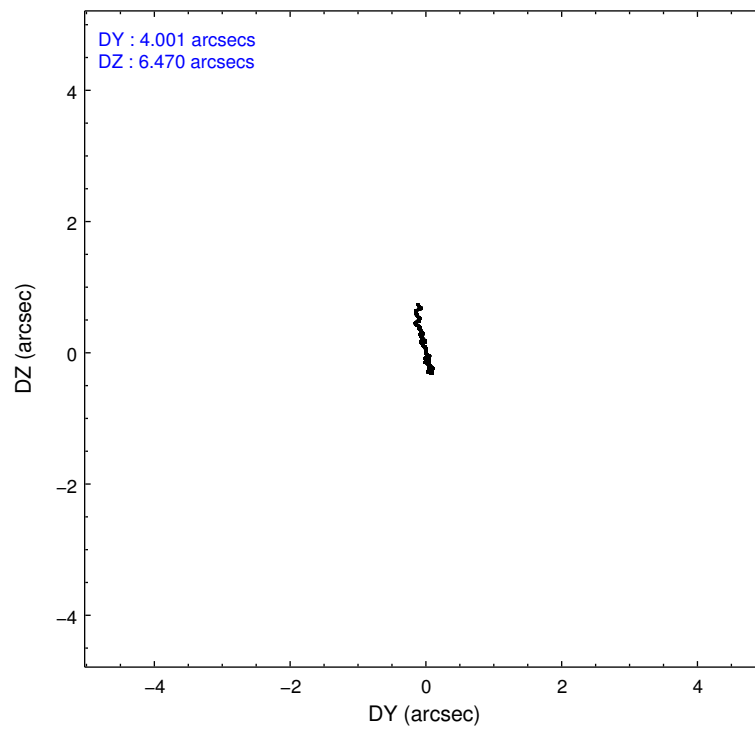
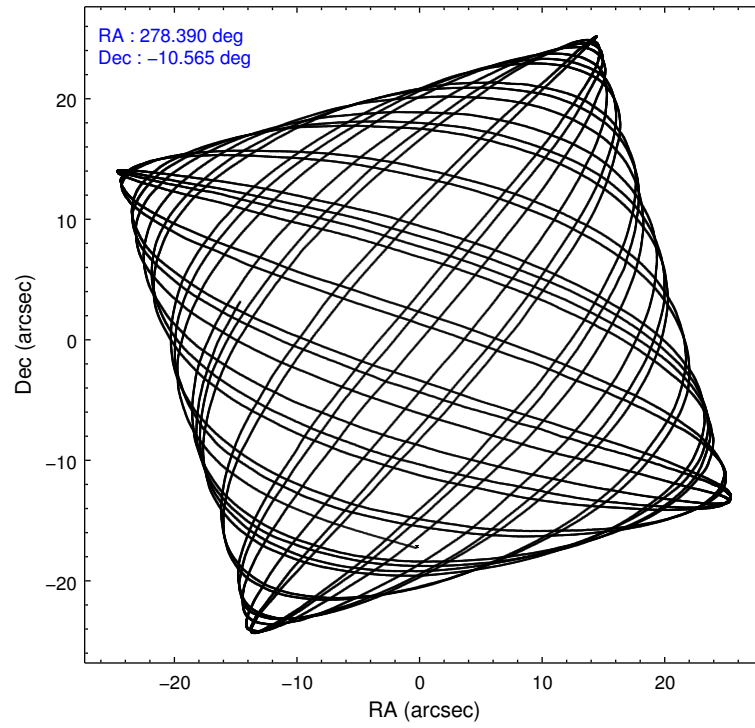
Level 1 Events

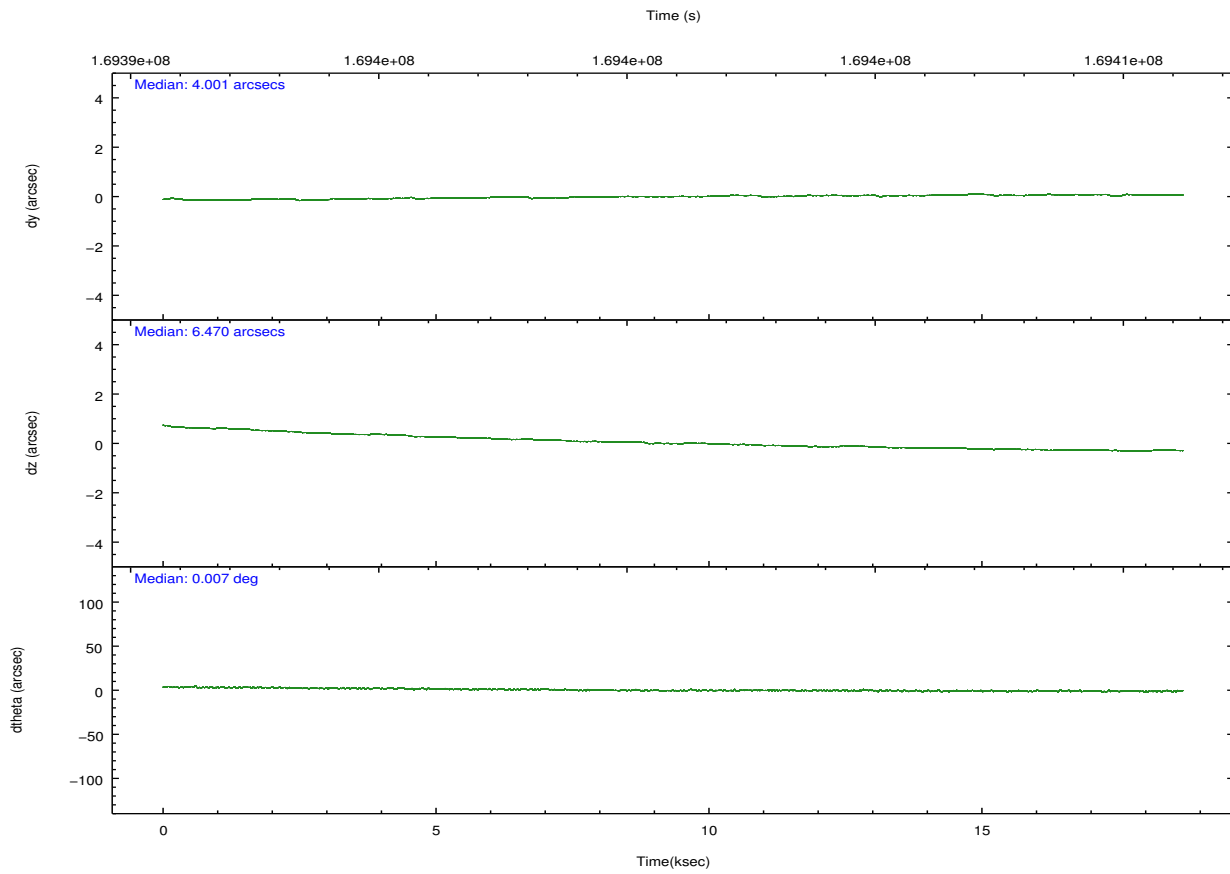
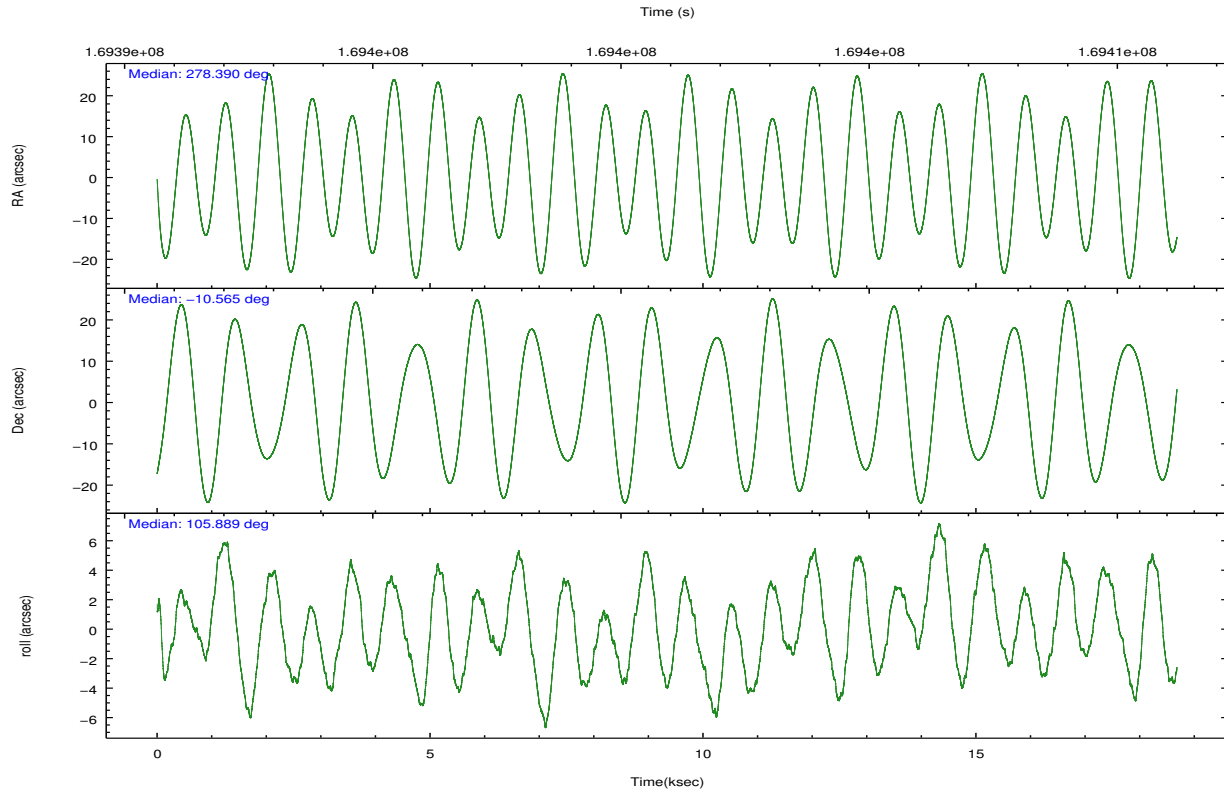
	segment 0
level 1 events	861040
rejected events	63942
rejected %	7%

2.2 Compared Parameters

Parameter	Planned	Actual	Parameter	Planned	Actual
Instrument	HRC	HRC	Obspar format version number	7	7
Detector	HRC-I	HRC-I	Obspar file type	PREDICTED	ACTUAL
Grating	NONE	NONE	Obspar update status	NONE	UPDATED
Data mode	OBSERVING	OBSERVING			
Observation mode	POINTING	POINTING			
[deg] Pointing RA	278.410319	278.3900386911869			
[deg] Pointing Dec	-10.582793	-10.56443727226355			
[deg] Pointing Roll	105.994841	105.8956256145864			
[s] Window start time (MET)	168134464.184000	168134464.184000			
[s] Window stop time (MET)	170640064.184000	170640064.184000			
[mm] SIM focus pos	-1.040293	-1.038866356238299			
[mm] SIM defocus	0	0.001426264420575141			
[mm] SIM translation stage pos	126.985494	126.9854943052878			
[mm] SIM translation stage offset	0	-5.413686238853188e-06			
[s] Observation start time (MET)	169391766.184000	169389828.88144			
Observation start date	2003-05-15T13:15:02	2003-05-15T12:43:48			
[s] Observation end time (MET)	169410266.184000	169410483.14482			
Observation end date	2003-05-15T18:23:22	2003-05-15T18:28:03			

2.3 Aspect



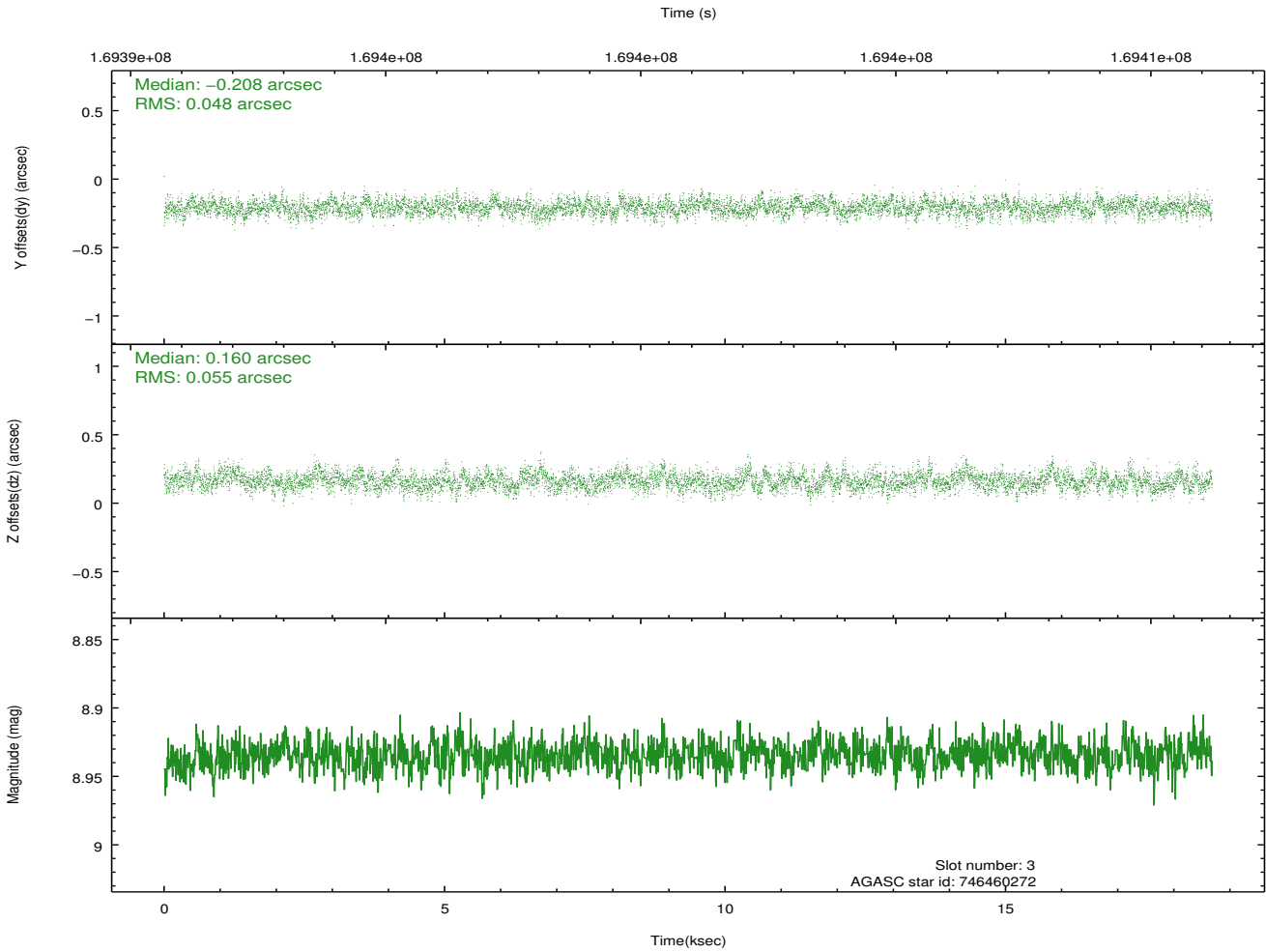
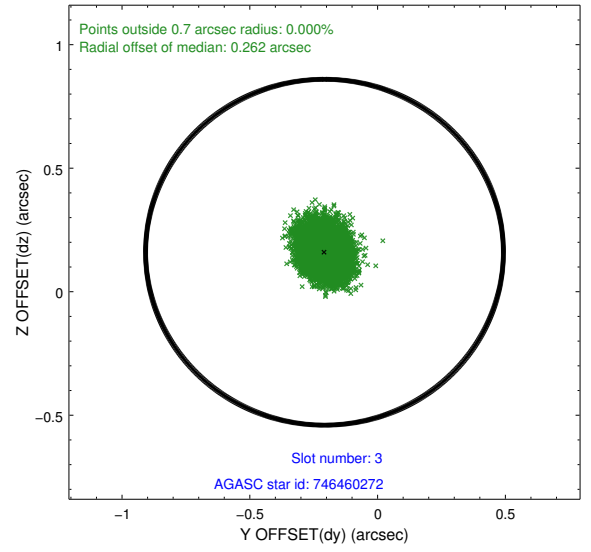
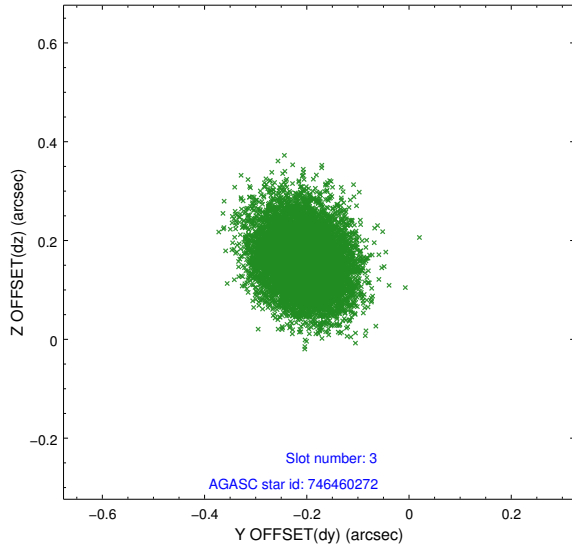


Slot Statistics

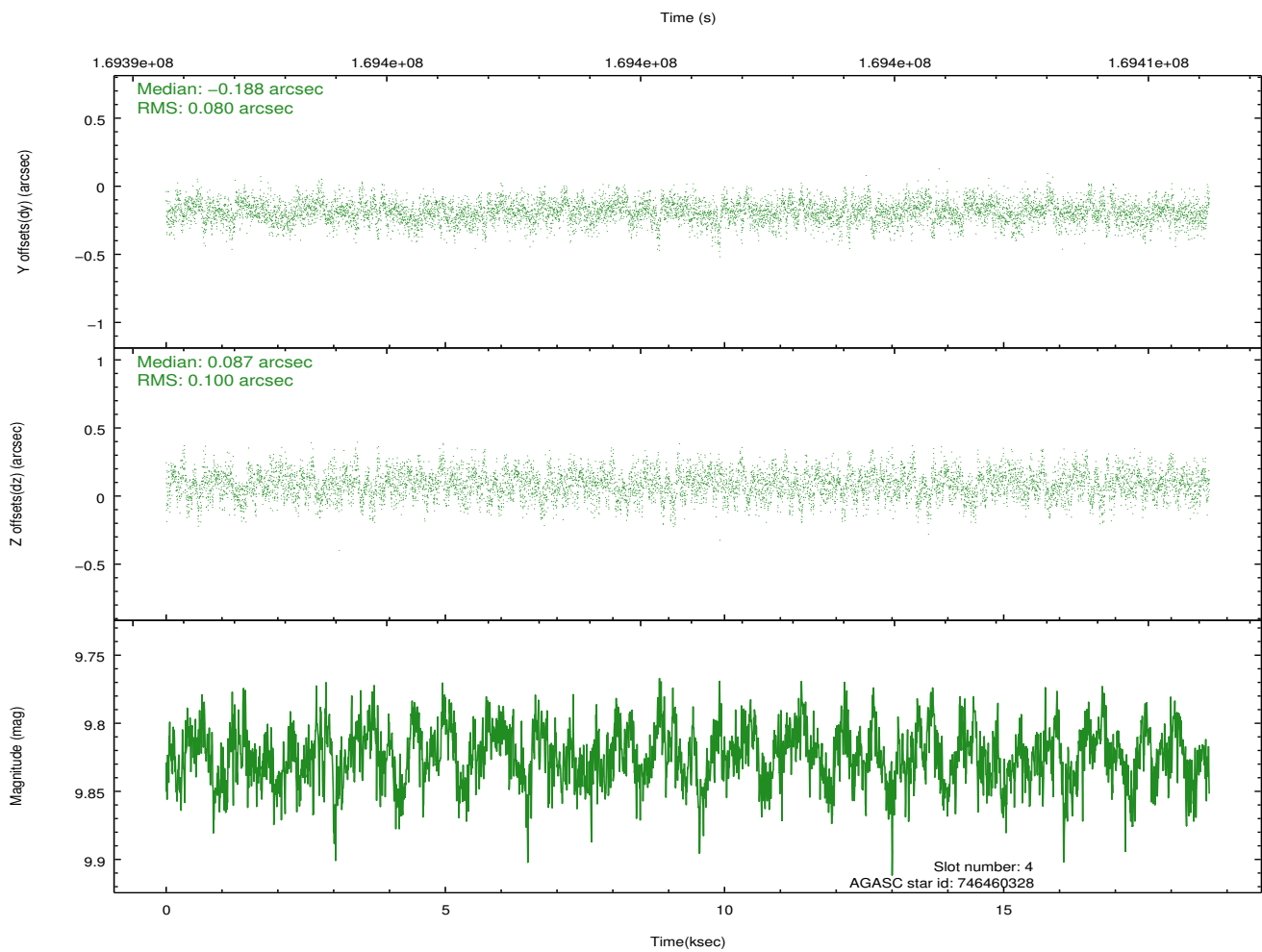
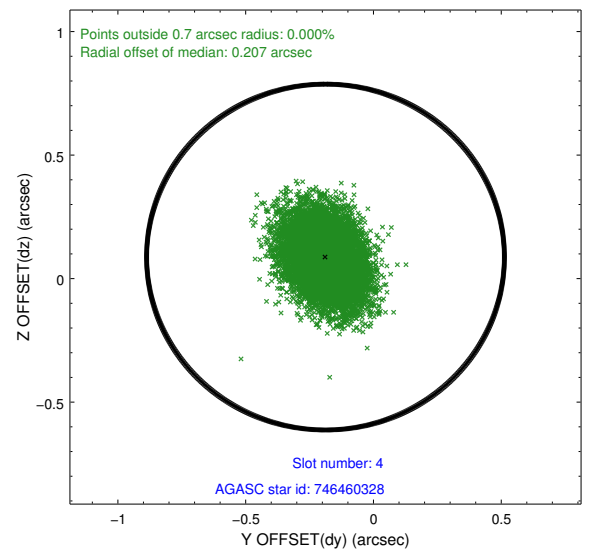
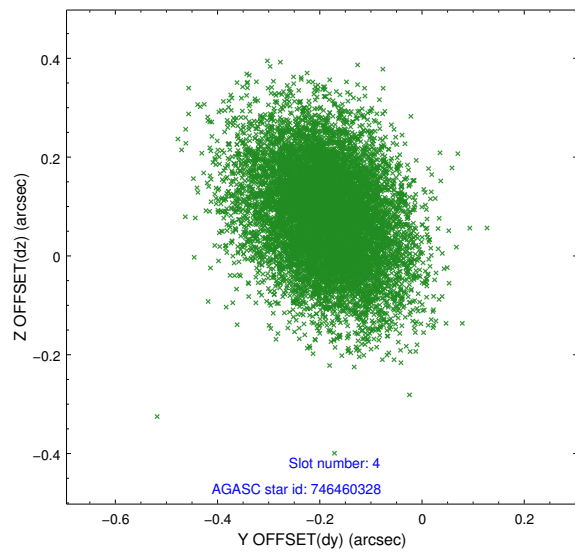
slot	status	id	mag	n_pts	med_dy	med_dz	dr1	dr2	ra	dec	mean_y	mean_z
0	FID	HRC-I-1	6.95	4556	0.014	0.005	0.008	0.013	0.000000	0.000000	-759.43	-1294.44
1	FID	HRC-I-2	6.99	4554	0.084	-0.057	0.009	0.017	0.000000	0.000000	853.10	-1296.31
2	FID	HRC-I-3	7.04	4555	0.023	-0.036	0.008	0.015	0.000000	0.000000	-1187.80	1009.78
3	GUIDE	746460272	8.93	9108	-0.208	0.160	0.078	0.126	278.847488	-10.152127	1062.82	-1915.81
4	GUIDE	746460328	9.82	9105	-0.188	0.087	0.136	0.224	278.603974	-9.898096	2180.21	-1339.13
5	GUIDE	746462392	8.54	9108	0.076	0.078	0.077	0.124	279.038421	-10.890715	-1679.57	-1828.91
6	GUIDE	746462456	8.40	9111	0.107	-0.050	0.070	0.115	278.652171	-10.530173	-54.22	-875.15
7	GUIDE	746995400	9.53	9103	0.214	-0.277	0.106	0.174	278.078957	-11.289885	-2124.99	1825.65

2.4 Star Slots

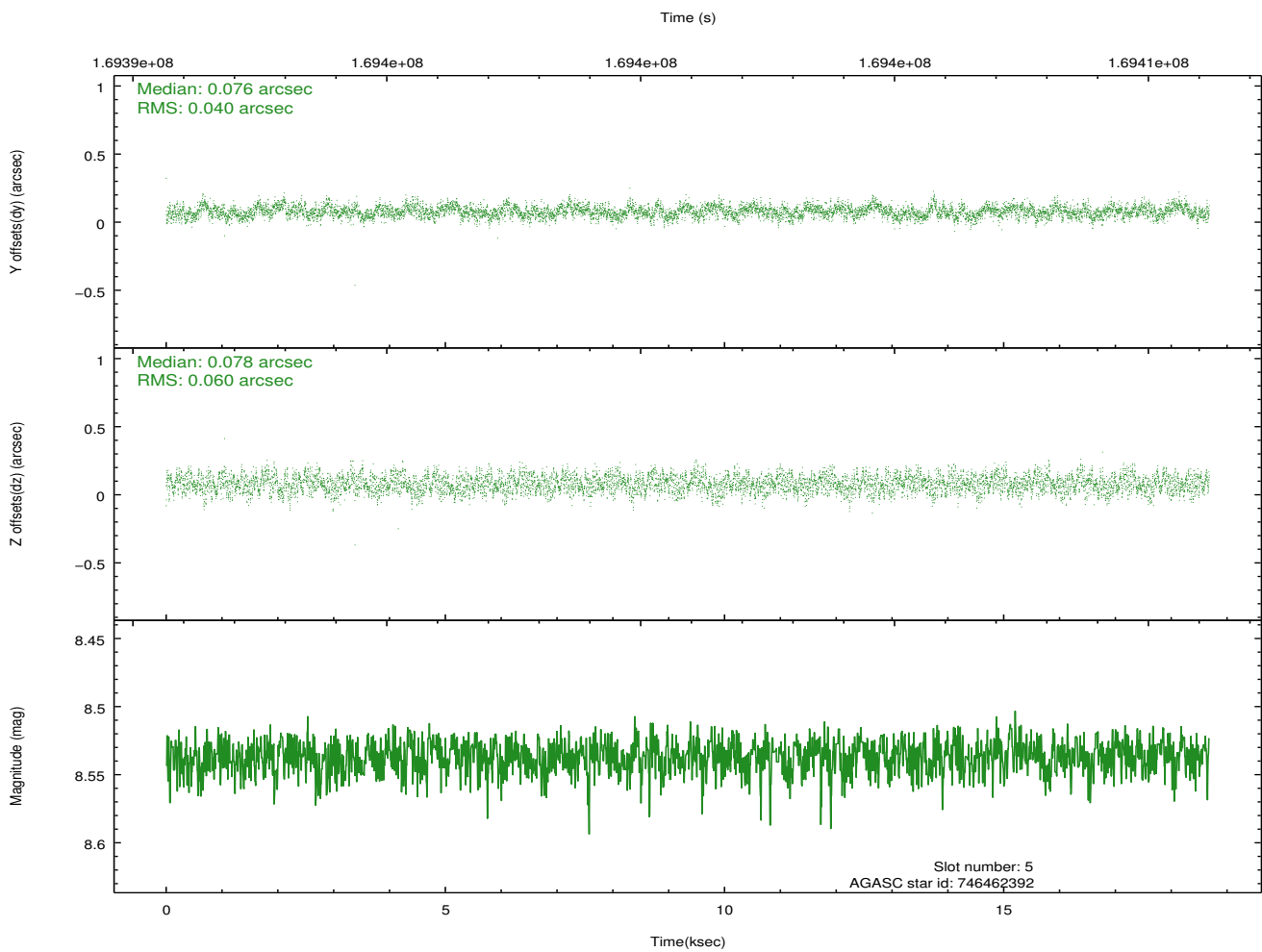
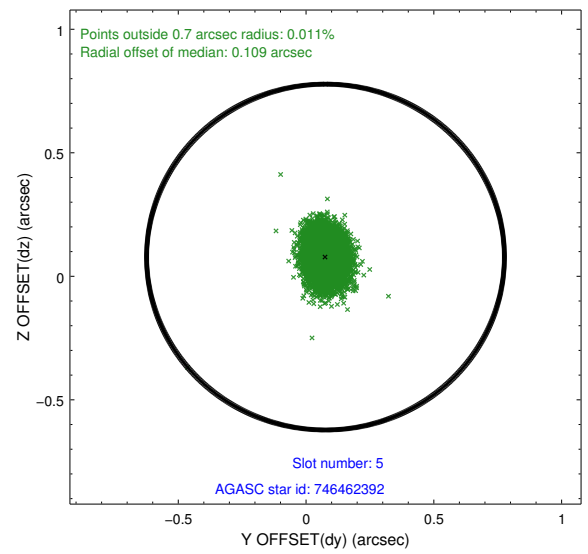
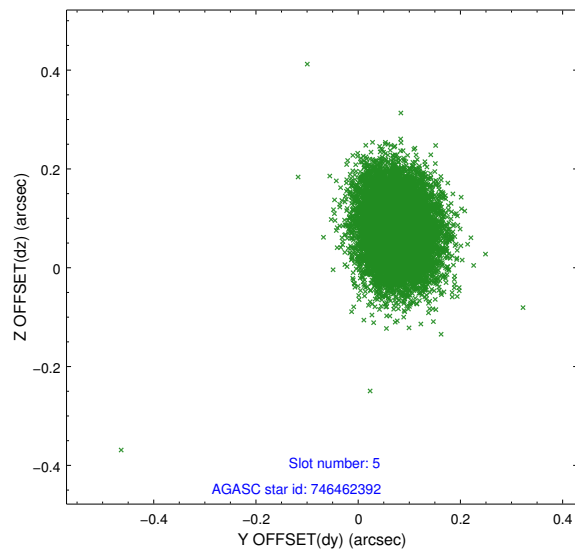
2.4.1 Slot 3



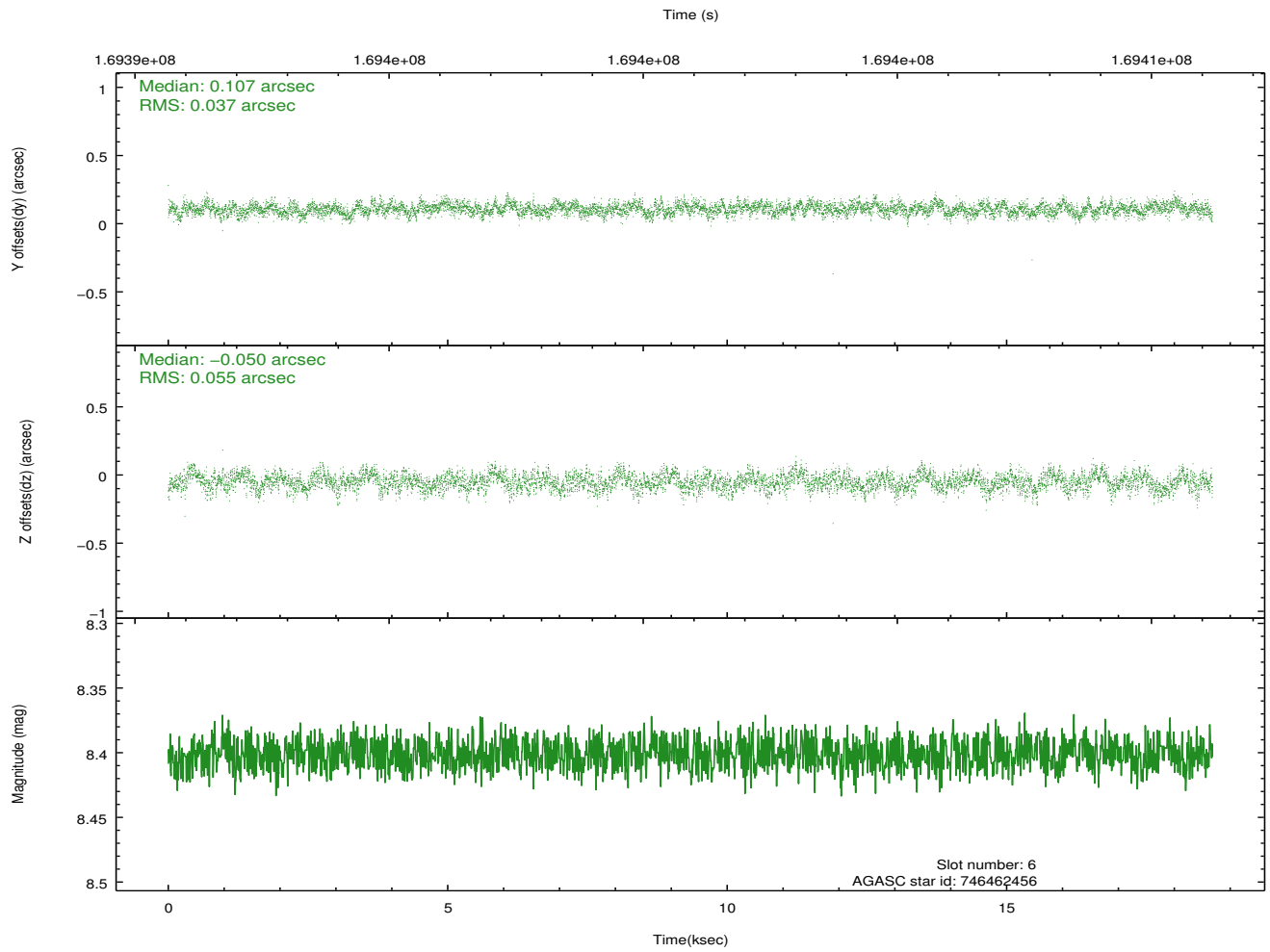
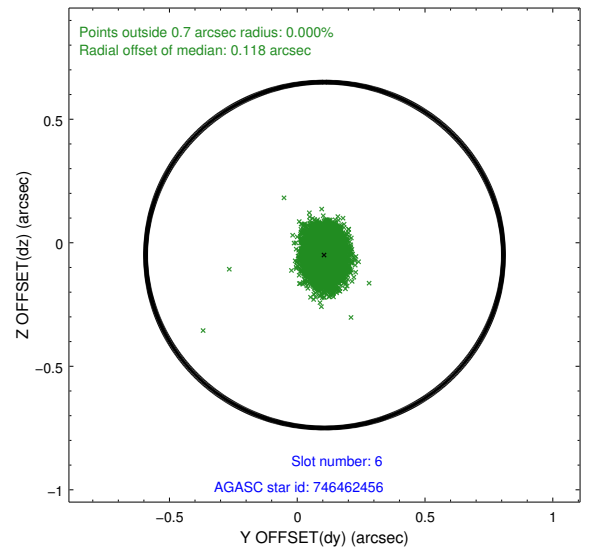
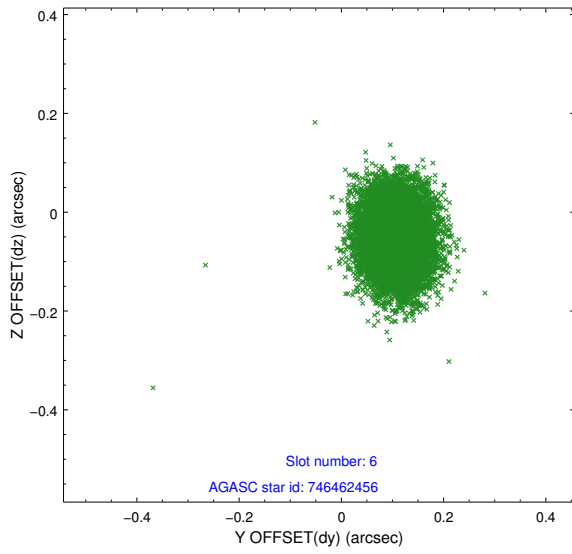
2.4.2 Slot 4



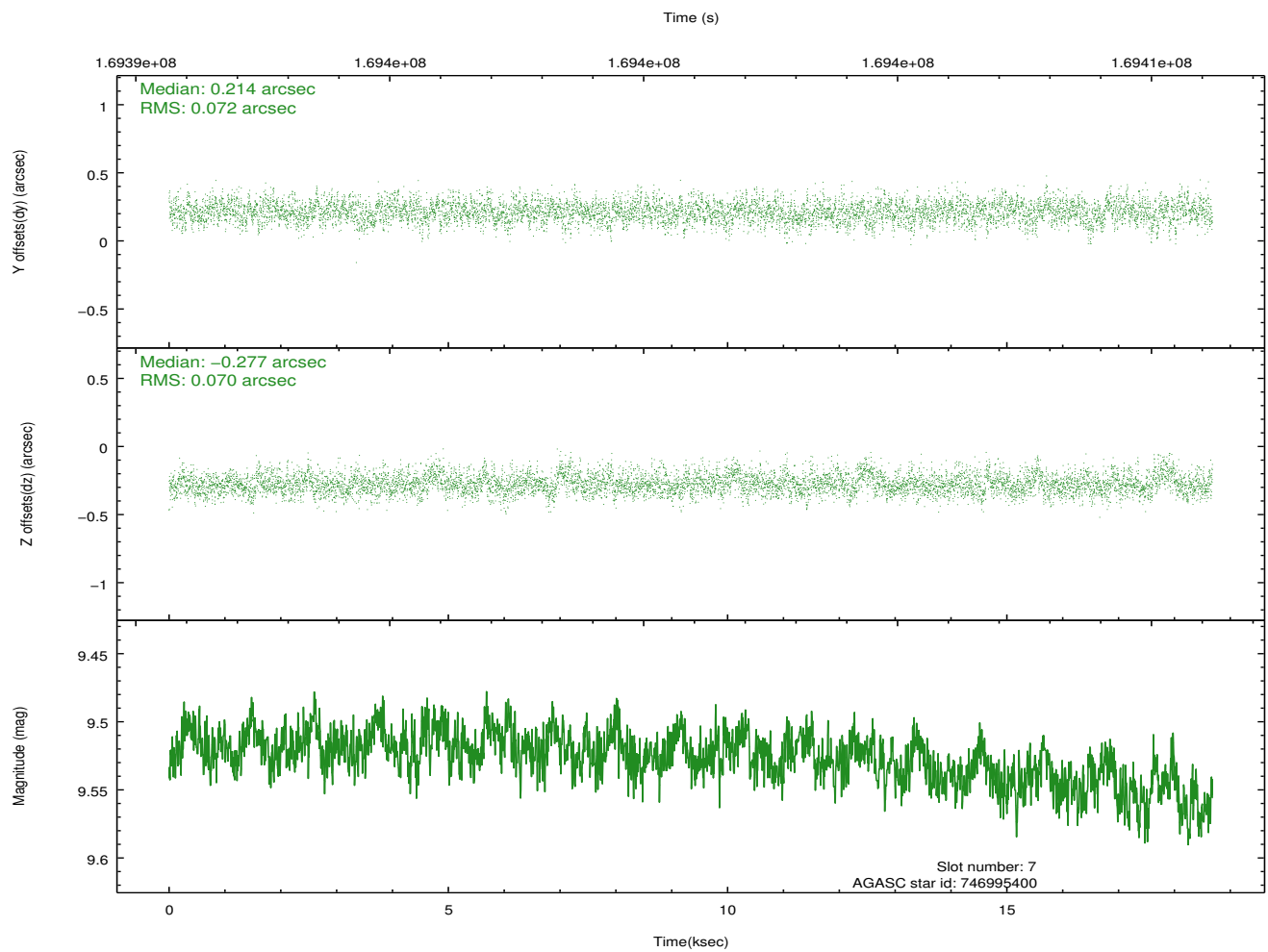
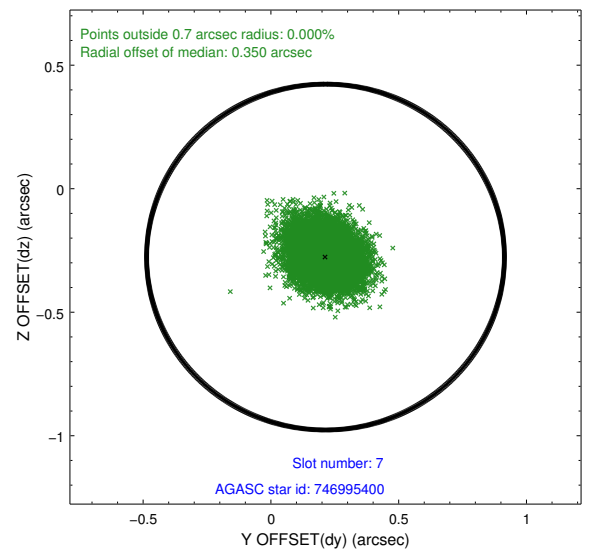
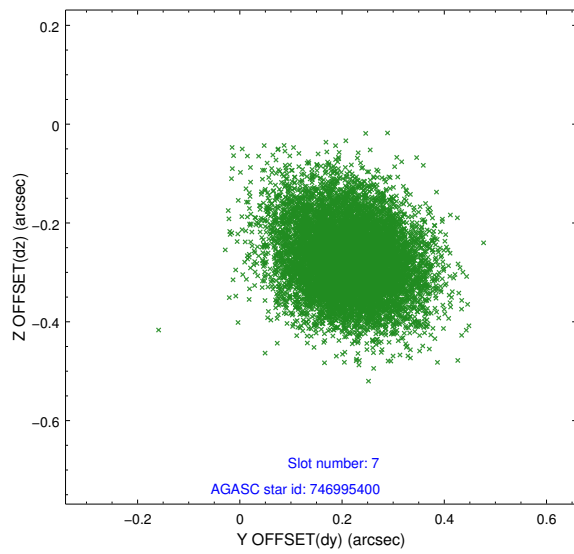
2.4.3 Slot 5



2.4.4 Slot 6

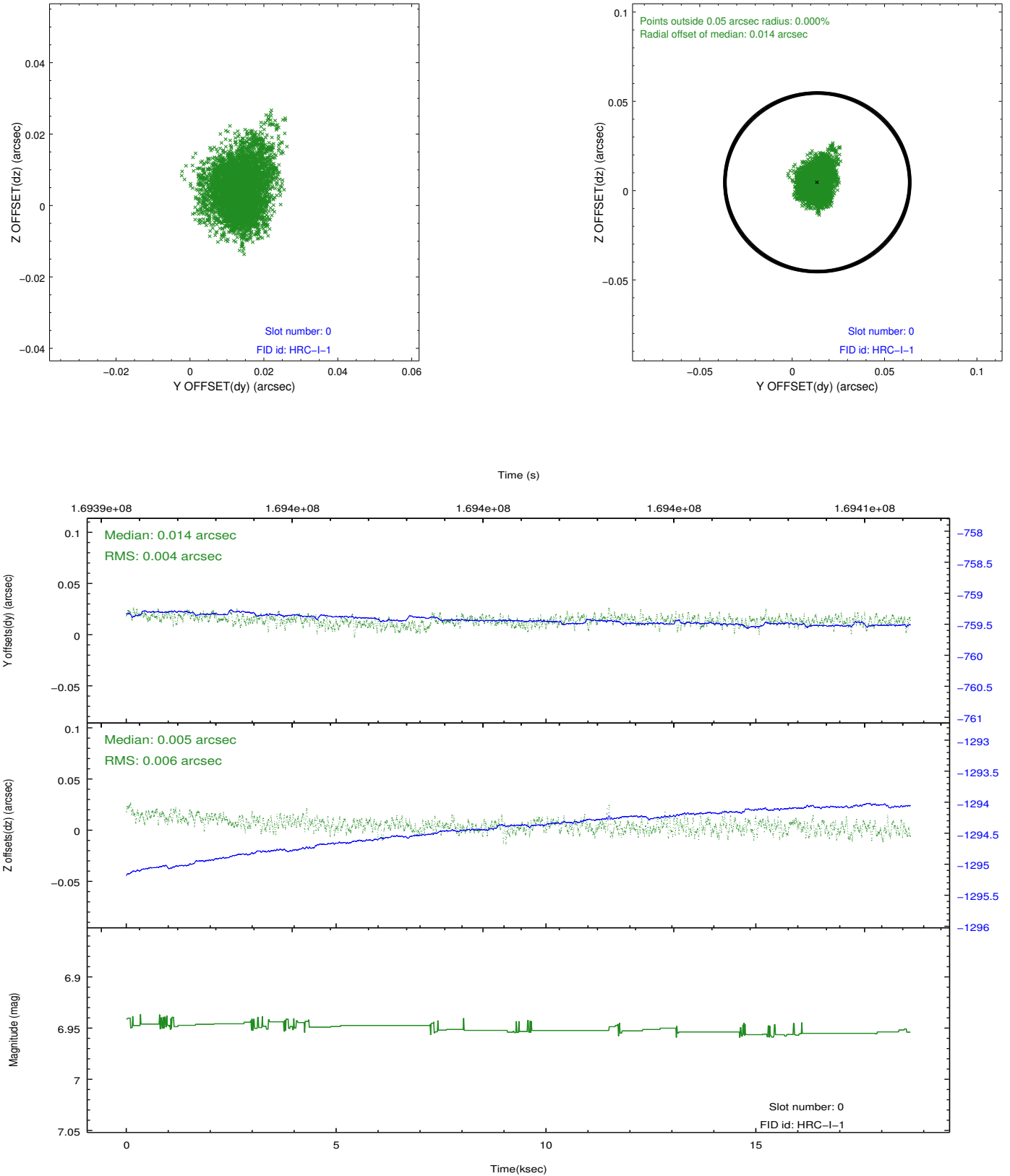


2.4.5 Slot 7

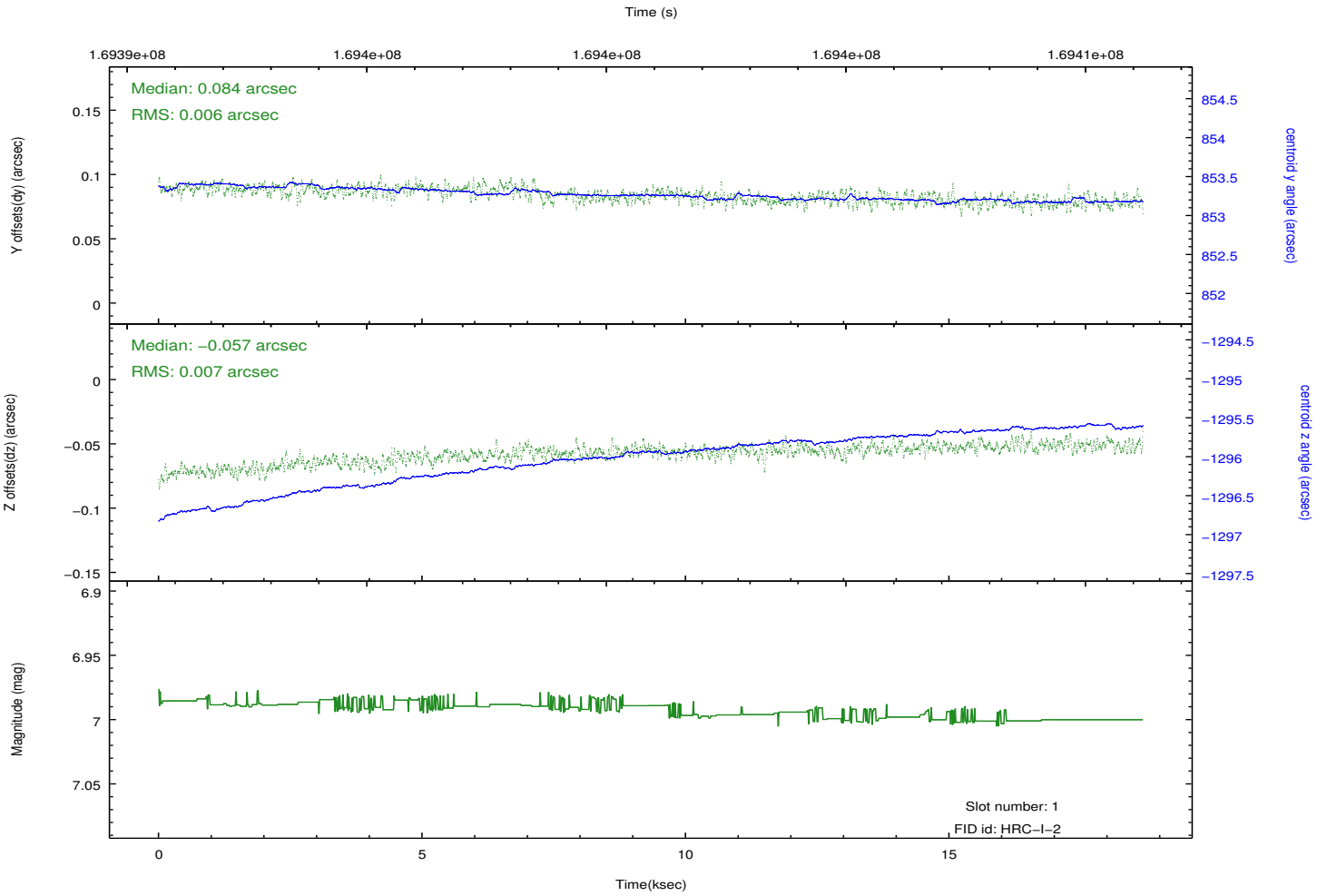
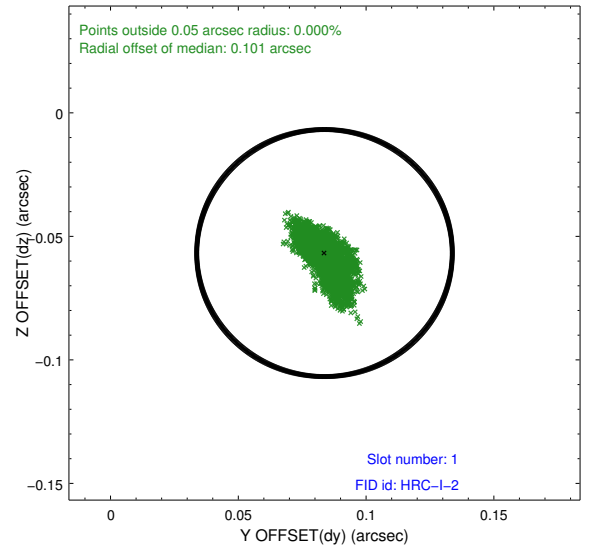
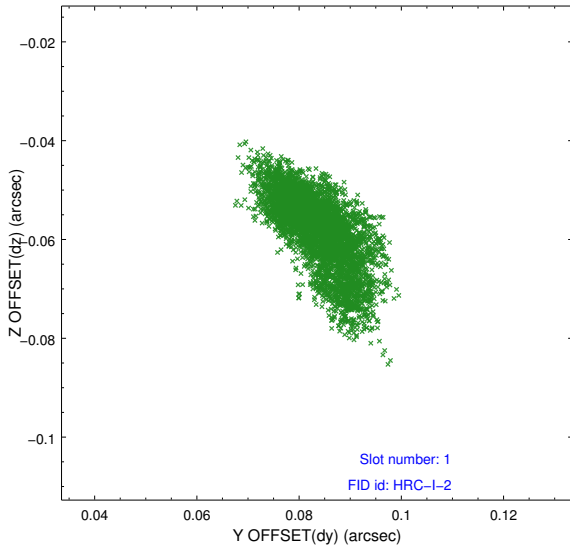


2.5 FID Slots

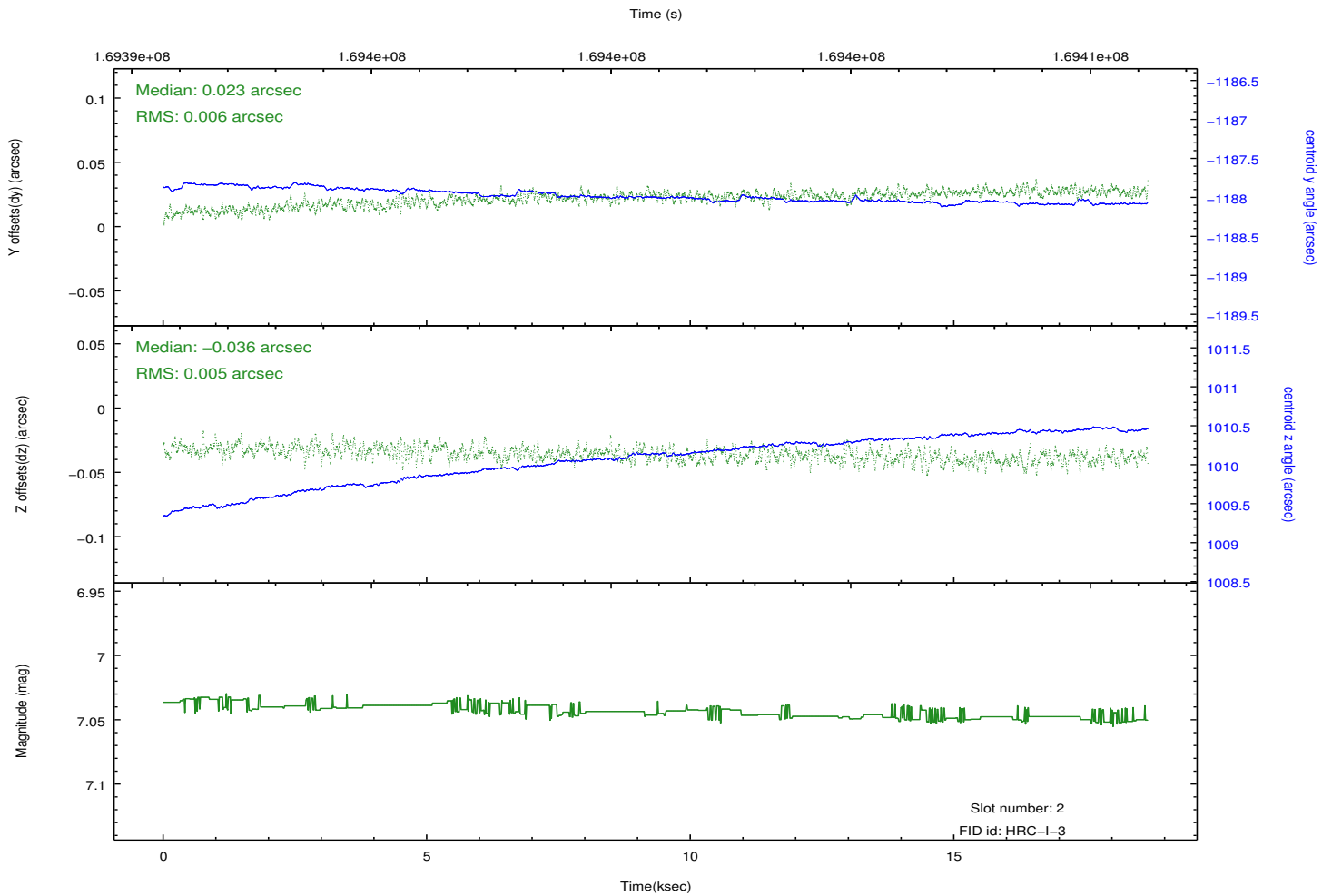
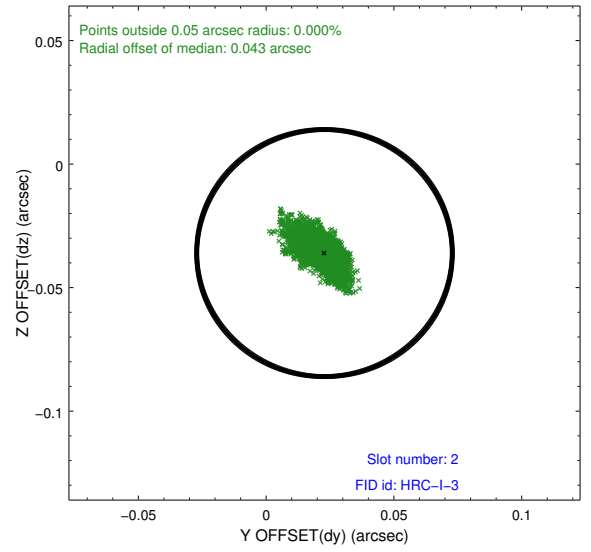
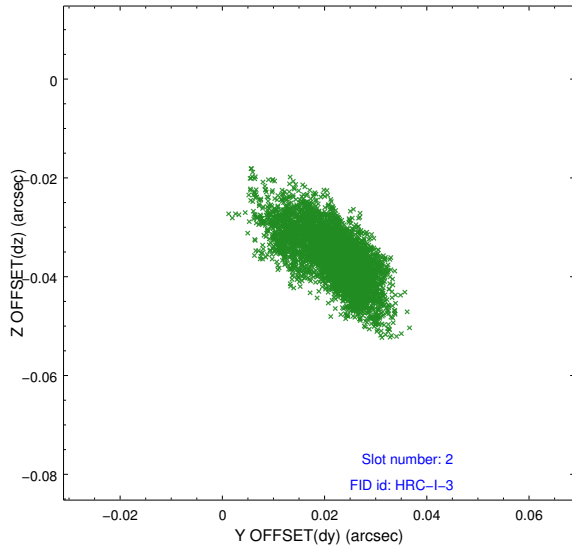
2.5.1 Slot 0



2.5.2 Slot 1



2.5.3 Slot 2



A Summary

A.1 Status

V&V Scientist	Jen Lauer
V&V Date (YYYY-MM-DD)	2012.11.15
V&V Edition	1
V&V Disposition and Status	OK
V&V Charge Time	18.392

A.2 Comments

Window constraint met.