

V&V Reference Report

L2 ASCDS Version : 8.4.5

Observation 3844 - L2 Version 3
Chandra X-Ray Center

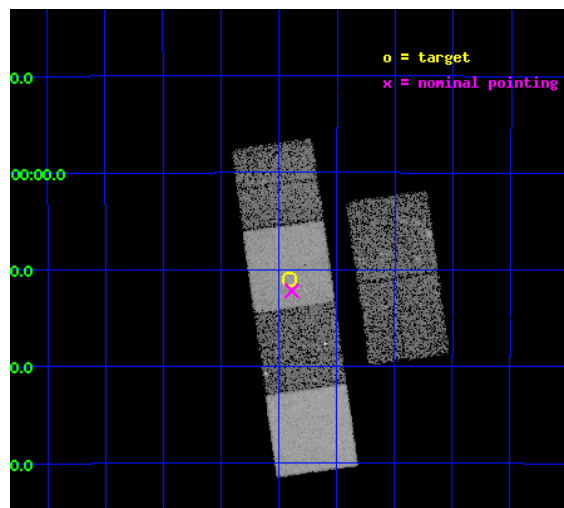
L2 Processing Date : Nov 5 2012

Contents

1	Front	2
2	OBI	3
2.1	OBI	3
2.1.1	Images	3
2.1.2	Bias	3
2.1.3	Parameters	4
2.1.4	Events	4
2.2	Compared Parameters	5
2.3	Aspect	6
2.4	Star Slots	9
2.4.1	Slot 3	9
2.4.2	Slot 4	10
2.4.3	Slot 5	11
2.4.4	Slot 6	12
2.4.5	Slot 7	13
2.5	FID Slots	14
2.5.1	Slot 0	14
2.5.2	Slot 1	15
2.5.3	Slot 2	16
A	Summary	17
A.1	Status	17
A.2	Comments	17

1 Front

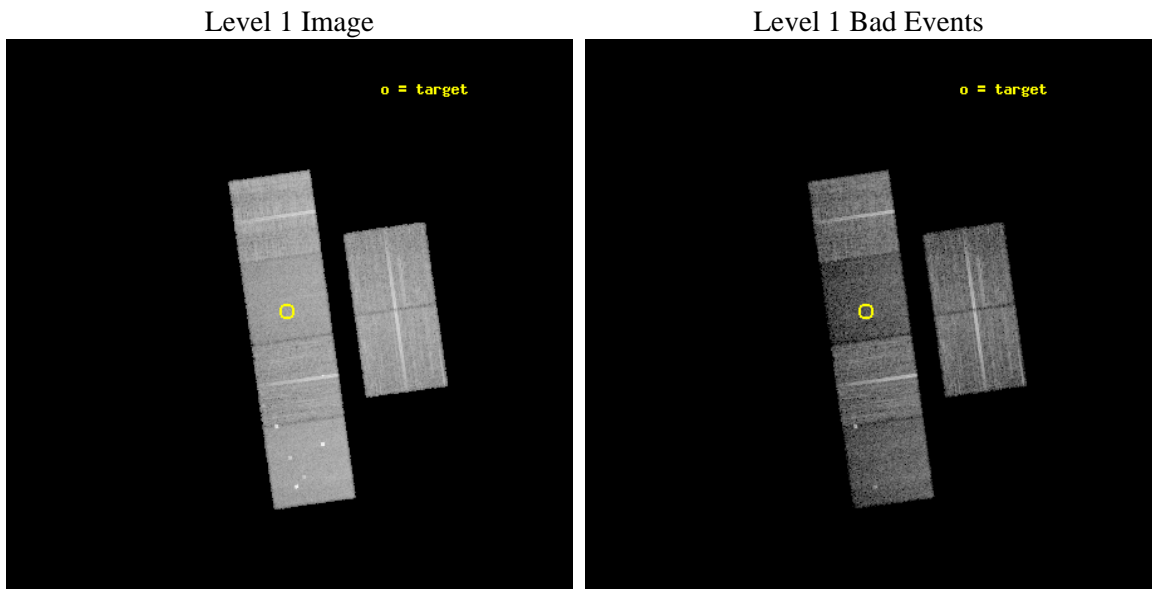
seq_num	500323	Sequence number
obs_id	3844	Observation id
title	SUPERNOVA REMNANTS: HOMES FOR YOUNG NEUTRON STARS	Proposal title
observer	Prof. David Helfand	Principal investigator
object	G351.2+0.1	Source name
dtcycle	0	
cycle	P	events from which exps? Prim/Second/Both
ra_targ	260.602917	Observer's specified target RA [deg]
dec_targ	-36.183333	Observer's specified target Dec [deg]
ra_nom	260.59725226056	Nominal RA [deg]
dec_nom	-36.203602941853	Nominal Dec [deg]
roll_nom	261.94992126189	Nominal Roll [deg]
revision	3	Processing version of data
ontime	14962.461445272	Sum of GTIs [s]
livetime	14772.997749139	Livetime [s]
ontime2	14959.261525005	Sum of GTIs [s]
ontime3	14962.338325262	Sum of GTIs [s]
ontime5	14962.420405269	Sum of GTIs [s]
ontime6	14962.379365265	Sum of GTIs [s]
ontime7	14962.461445272	Sum of GTIs [s]
ontime8	14962.297285289	Sum of GTIs [s]
l2events	110482	Number of level 2 events



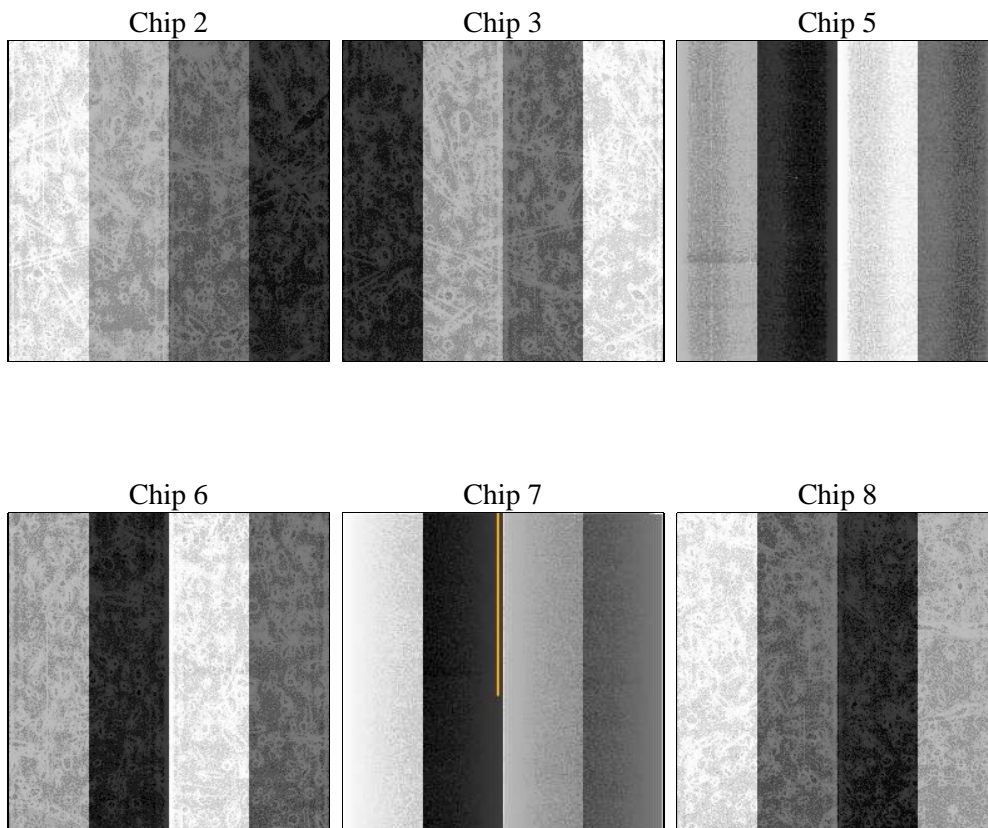
2 OBI

2.1 OBI

2.1.1 Images



2.1.2 Bias



2.1.3 Parameters

obi_num	0	Obi number	sched_exp_time	15000.000000	[s] Scheduled observation exposure time
ascdsver	8.4.5	Processing system revision	ontime	14962.461445272	Sum of GTIs [s]
caldbver	4.5.2	 	ontime2	14959.261525005	Sum of GTIs [s]
date	2012-11-05T02:47:47	Date and time of file creation	ontime3	14962.338325262	Sum of GTIs [s]
revision	3	Processing version of data	ontime5	14962.420405269	Sum of GTIs [s]
			ontime6	14962.379365265	Sum of GTIs [s]
			ontime7	14962.461445272	Sum of GTIs [s]
			ontime8	14962.297285289	Sum of GTIs [s]
			l1events	506503	Number of level 1 events

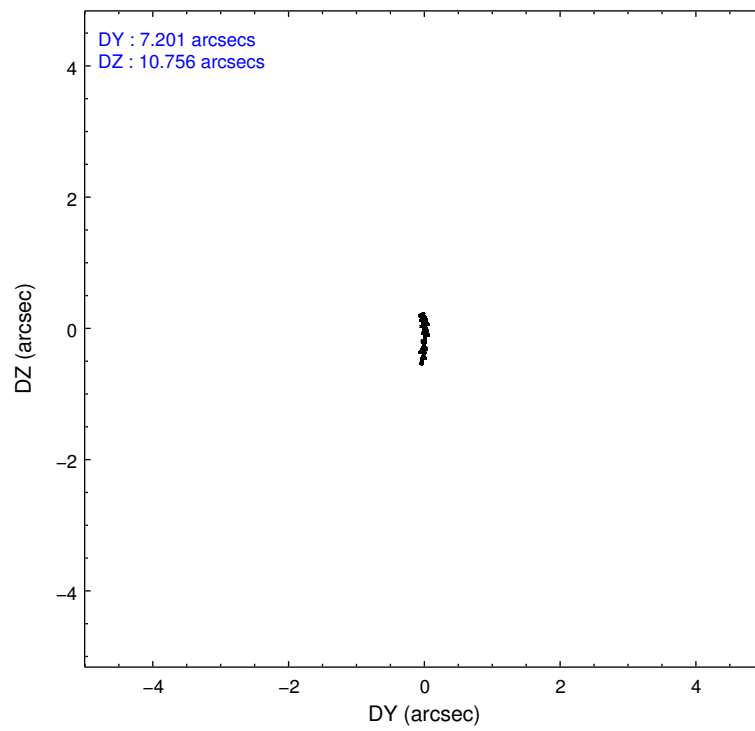
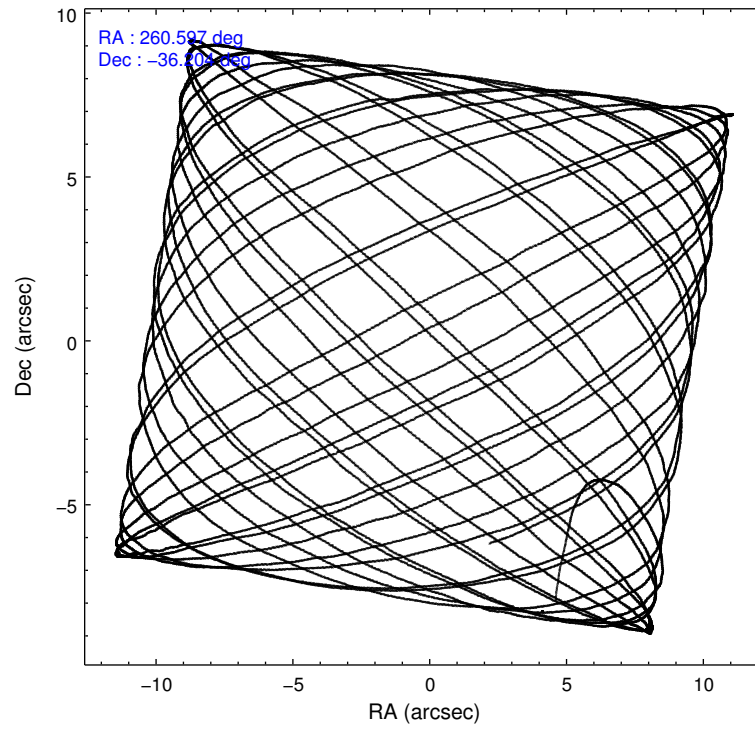
2.1.4 Events

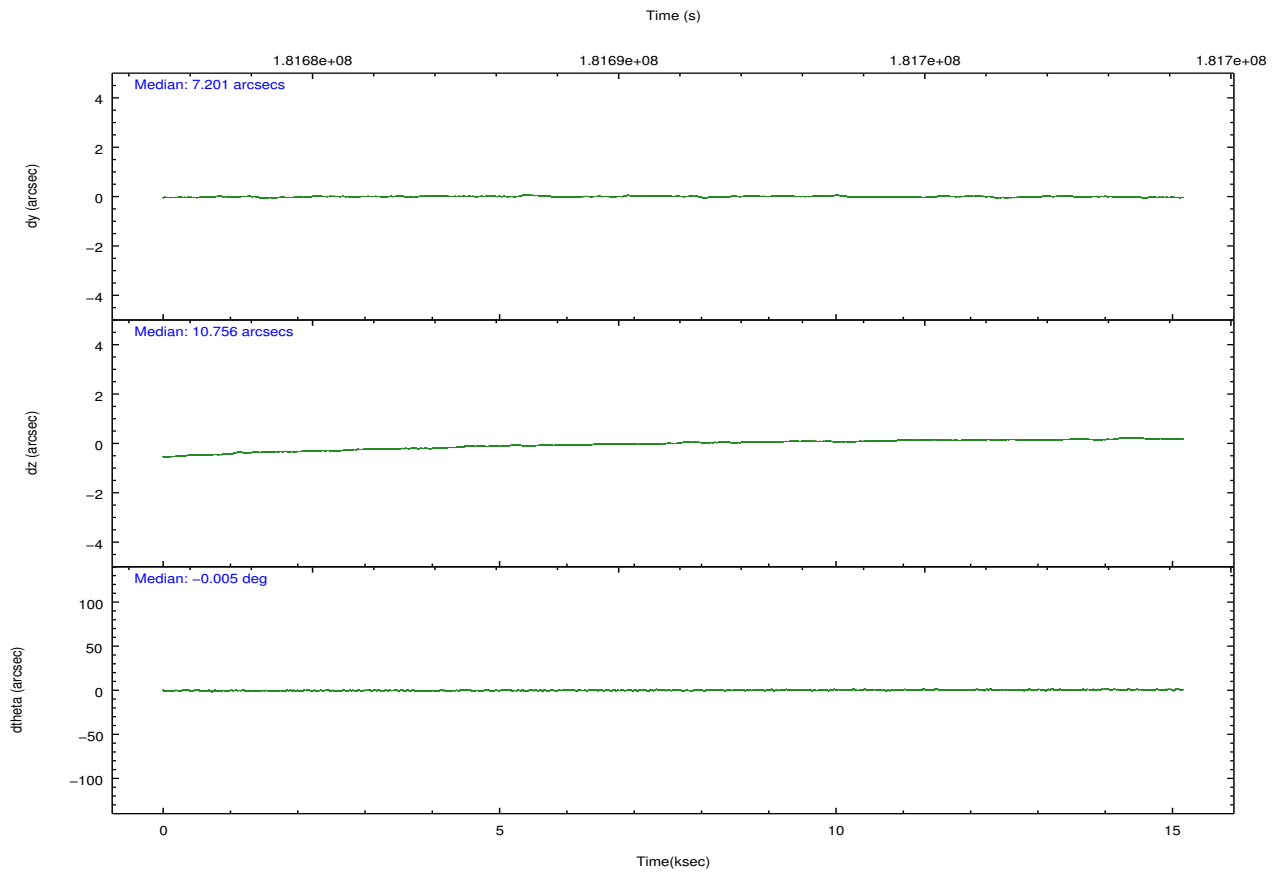
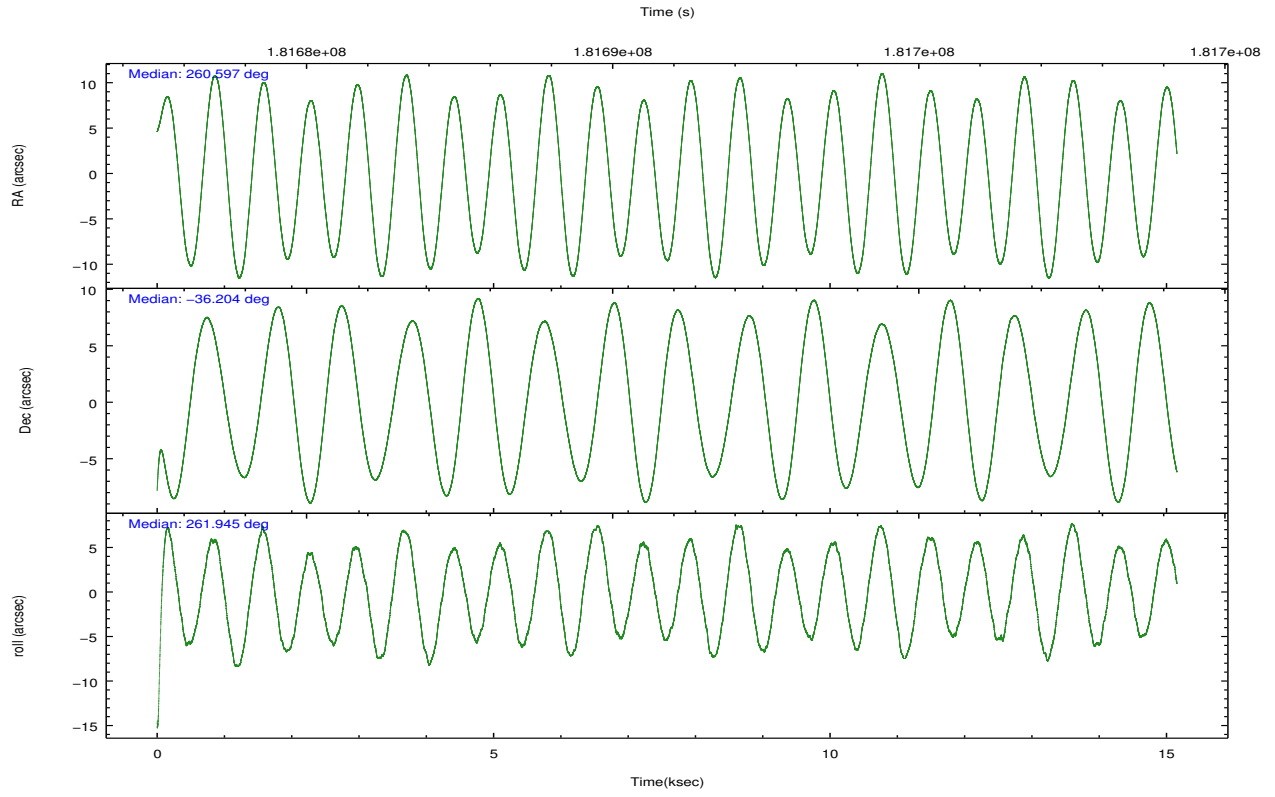
	ccd 2	ccd 3	ccd 5	ccd 6	ccd 7	ccd 8		ccd 2	ccd 3	ccd 5	ccd 6	ccd 7	ccd 8
level 1 events	84041	74757	97754	78425	72325	99201	grade 0 events	3076	3318	8257	3875	3521	6708
rejected events	76204	66724	44220	69413	36322	75538		3%	4%	8%	4%	4%	6%
rejected %	90%	89%	45%	88%	50%	76%	grade 1 events	64	52	700	44	90	68
								0%	0%	0%	0%	0%	0%
							grade 2 events	1768	1520	15451	1742	7511	5209
								2%	2%	15%	2%	10%	5%
							grade 3 events	840	874	2446	906	3602	2647
								0%	1%	2%	1%	4%	2%
							grade 4 events	872	863	2435	940	3601	2513
								1%	1%	2%	1%	4%	2%
							grade 5 events	2156	2450	7892	2610	7744	3952
								2%	3%	8%	3%	10%	3%
							grade 6 events	1282	1458	24955	1551	17781	6589
								1%	1%	25%	1%	24%	6%
							grade 7 events	73983	64222	35618	66757	28475	71515
								88%	85%	36%	85%	39%	72%

2.2 Compared Parameters

Parameter	Planned	Actual	Parameter	Planned	Actual
Instrument	ACIS	ACIS	Obspar format version number	7	7
Detector	ACIS-235678	ACIS-235678	Obspar file type	PREDICTED	ACTUAL
Grating	NONE	NONE	Obspar update status	NONE	UPDATED
Data mode	VFAINT	VFAINT	Number of optional ACIS chips dropped	0	0
Observation mode	POINTING	POINTING	On-chip summing requested	N	N
[deg] Pointing RA	260.584178	260.5972522605568	Subarray requested	NONE	NONE
[deg] Pointing Dec	-36.178453	-36.20360294185268	Alternating exposures requested	N	N
[deg] Pointing Roll	261.785589	261.949921261895	[s] Primary exposure time	0.000000	3.2
[mm] SIM focus pos	-0.684267	-0.6828225247311905			
[mm] SIM defocus	0	0.001444936568705701			
[mm] SIM translation stage pos	-190.132523	-190.1400660498719			
[mm] SIM translation stage offset	0	0.00754346686406393			
[s] Observation start time (MET)	181683468.184000	181682505.78075			
Observation start date	2003-10-04T19:36:44	2003-10-04T19:21:45			
[s] Observation end time (MET)	181698468.184000	181699415.20648			
Observation end date	2003-10-04T23:46:44	2003-10-05T00:03:35			
Read mode	TIMED	TIMED			

2.3 Aspect





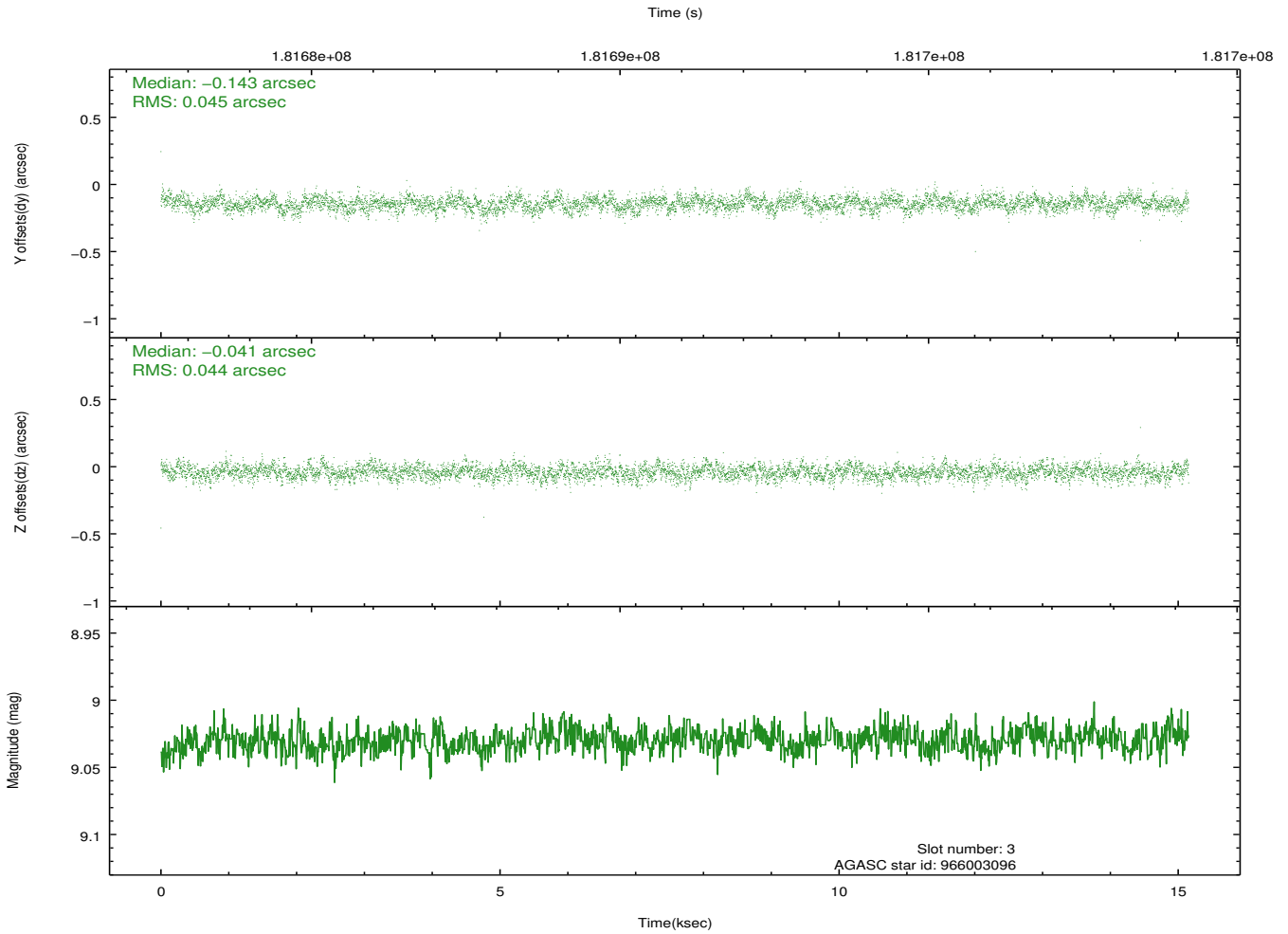
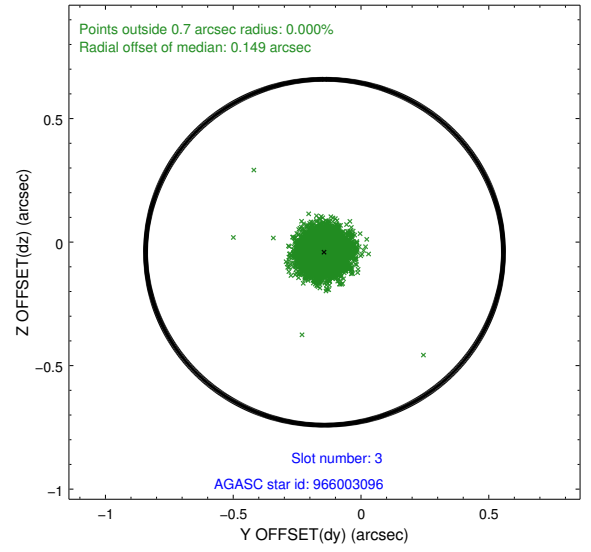
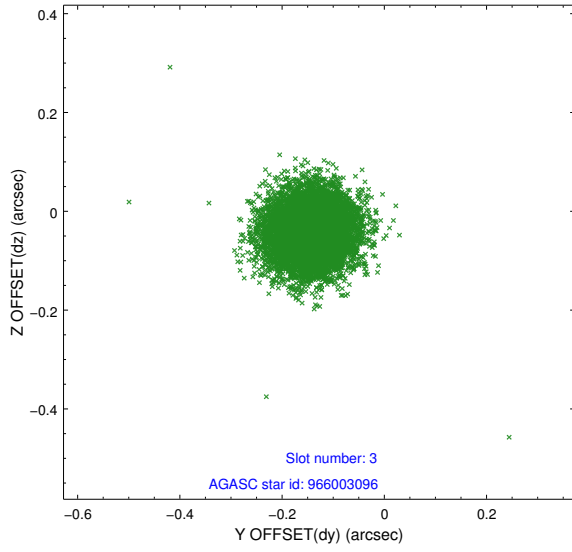
Slot Statistics

slot	status	id	mag	n_pts	med_dy	med_dz	dr1	dr2	ra	dec	mean_y	mean_z
0	FID	ACIS-S-2	7.10	3697	-0.040	-0.000	0.008	0.013	0.000000	0.000000	-759.96	-1731.99
1	FID	ACIS-S-4	7.20	3695	0.050	0.019	0.007	0.012	0.000000	0.000000	2153.24	176.26
2	FID	ACIS-S-5	7.23	3697	-0.041	-0.010	0.007	0.012	0.000000	0.000000	-1812.46	170.17
3	GUIDE	966003096	9.03	7390	-0.143	-0.041	0.067	0.107	260.360642	-35.600982	-1963.11	-944.71
4	GUIDE	966530176	8.78	7393	0.144	0.025	0.065	0.104	260.167913	-36.682742	1971.35	-929.62
5	GUIDE	966530504	9.03	7393	0.023	-0.066	0.069	0.111	260.219400	-36.072372	-223.67	-1104.97
6	GUIDE	966530544	8.76	7320	0.152	-0.098	0.070	0.115	260.631187	-36.513761	1175.75	306.92
7	GUIDE	968236152	9.64	7390	-0.175	0.181	0.099	0.161	261.153683	-35.838826	-1442.63	1471.18

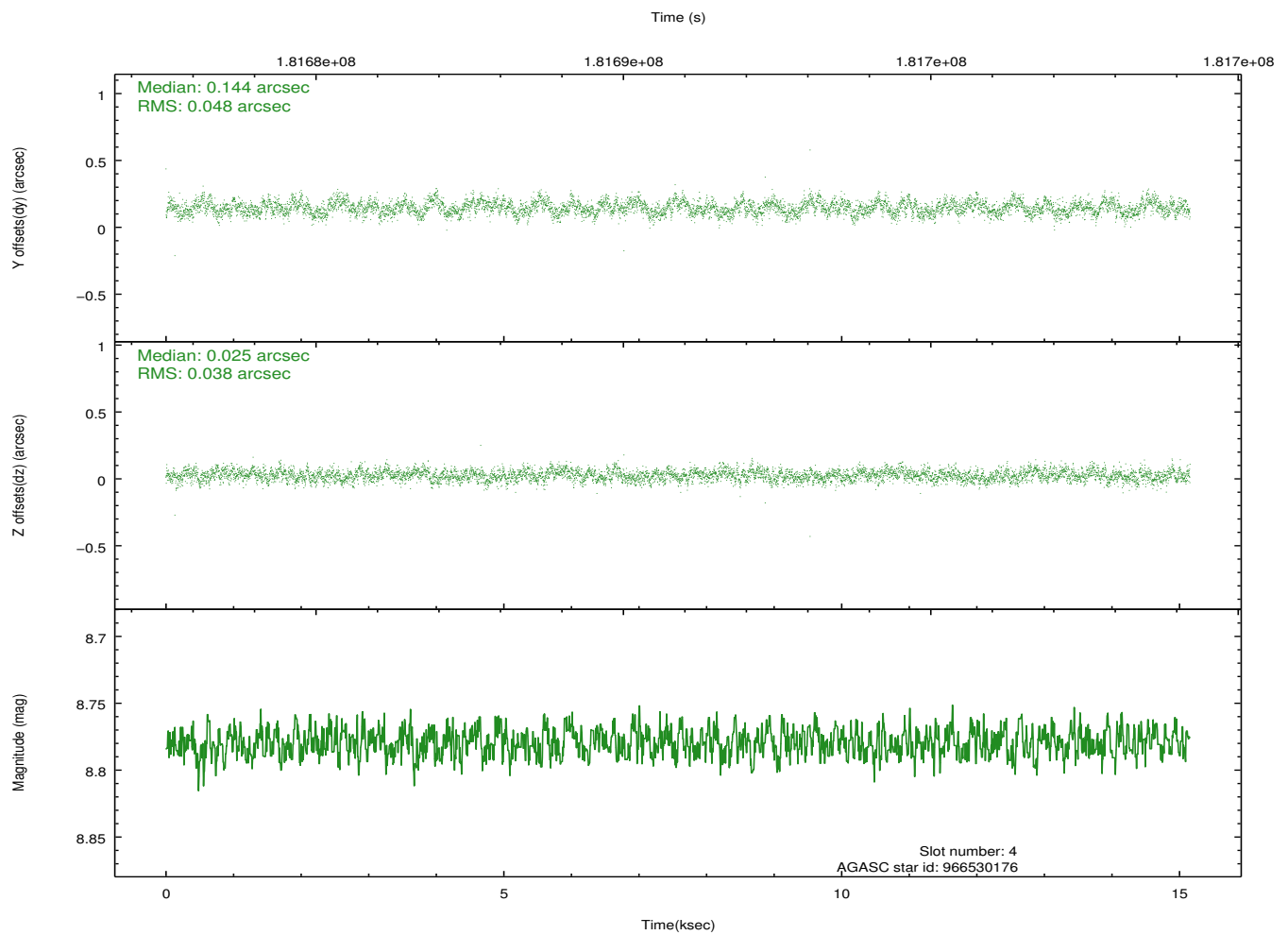
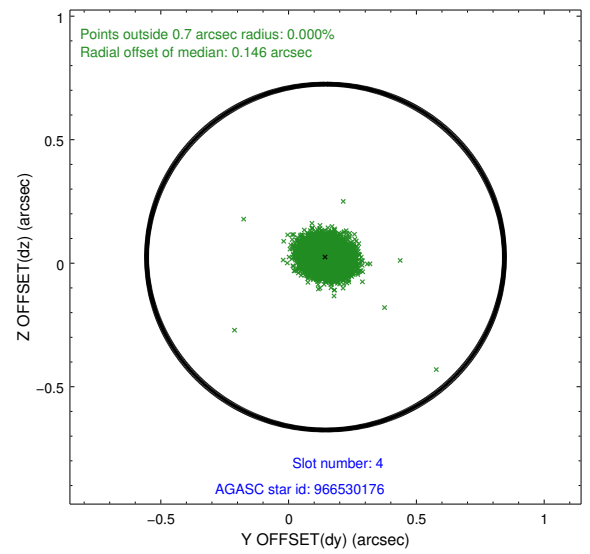
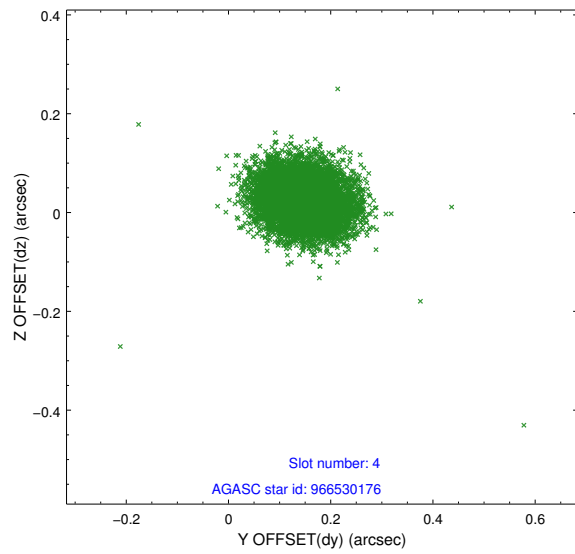
∞

2.4 Star Slots

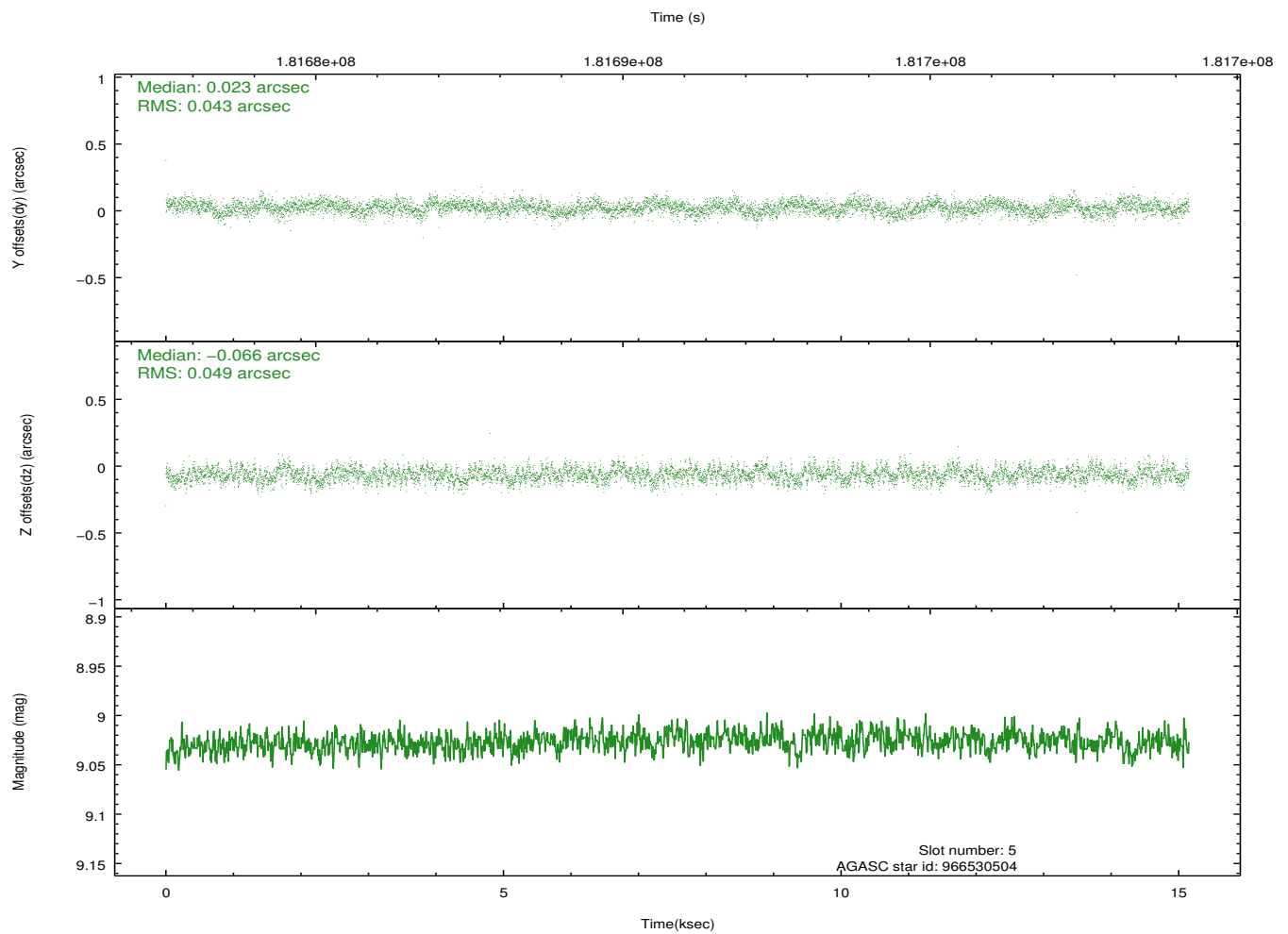
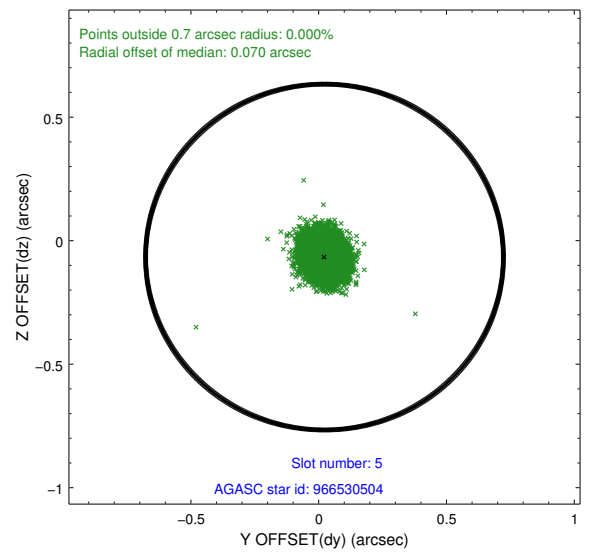
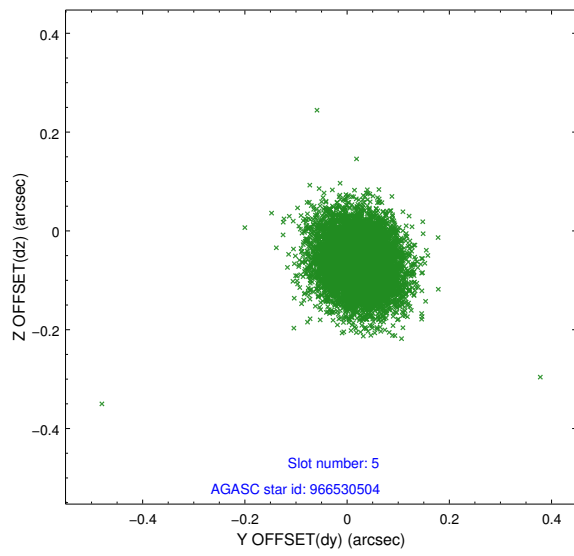
2.4.1 Slot 3



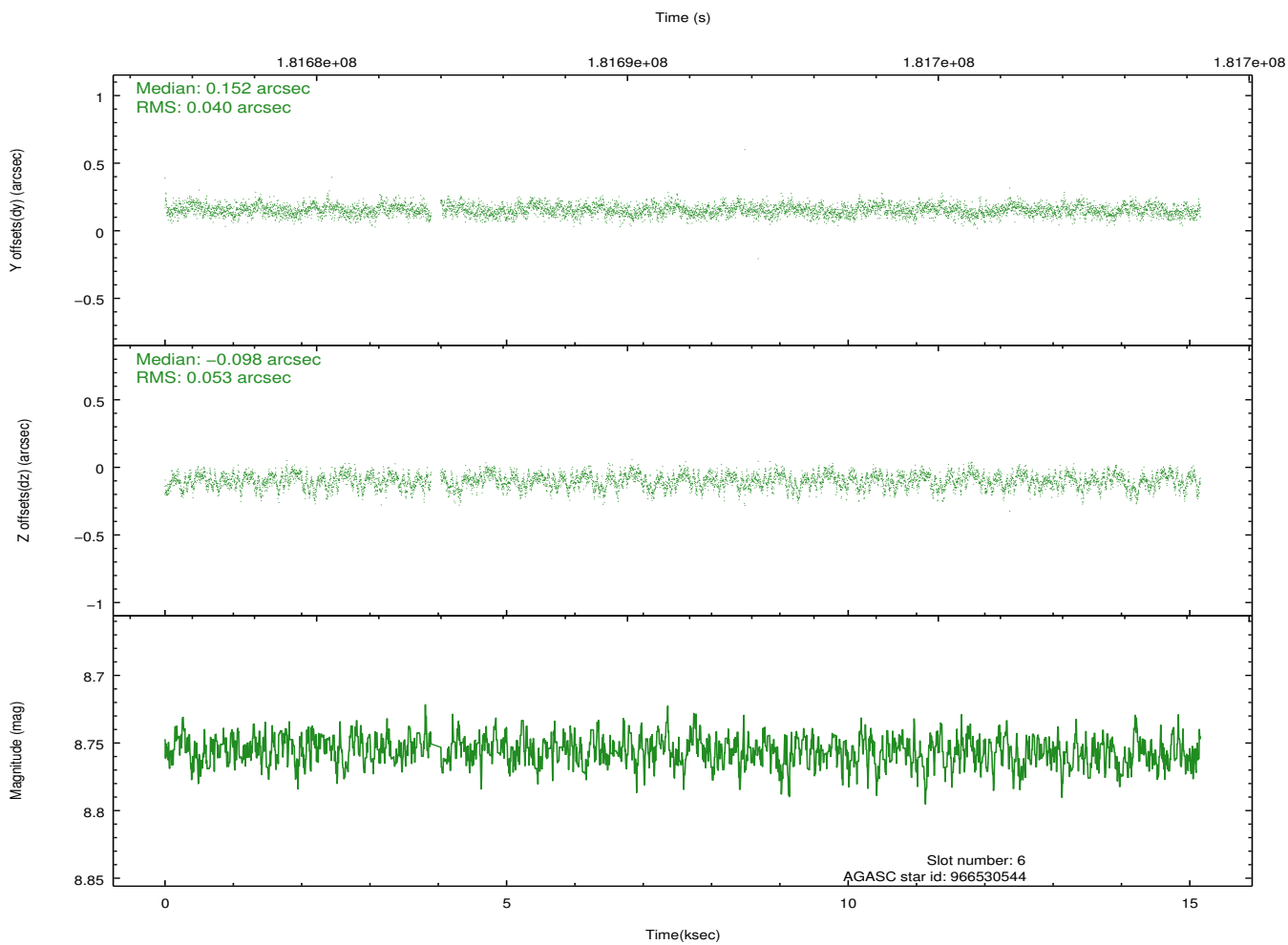
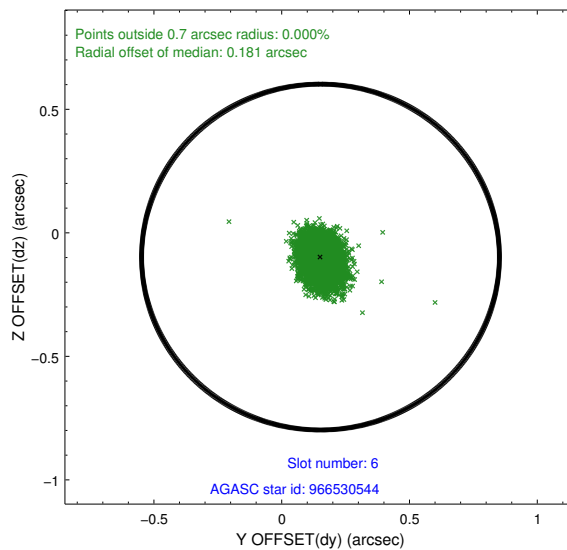
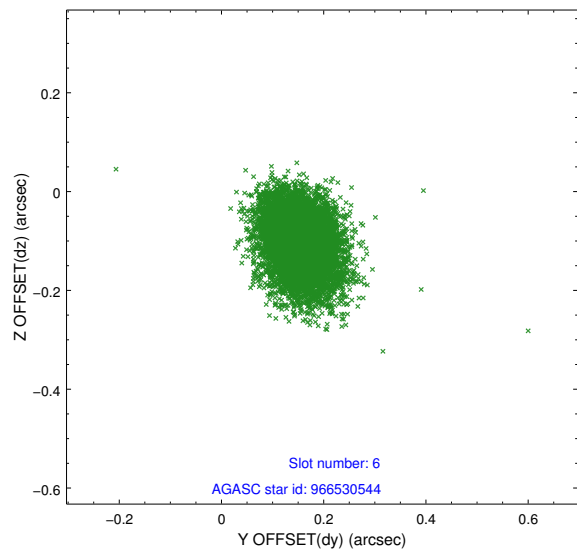
2.4.2 Slot 4



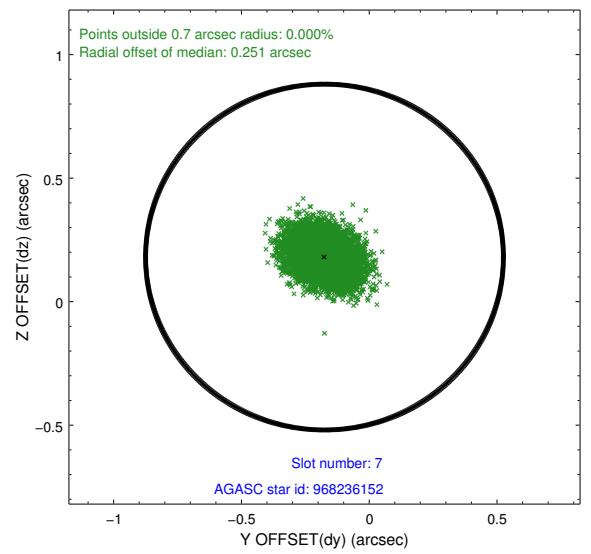
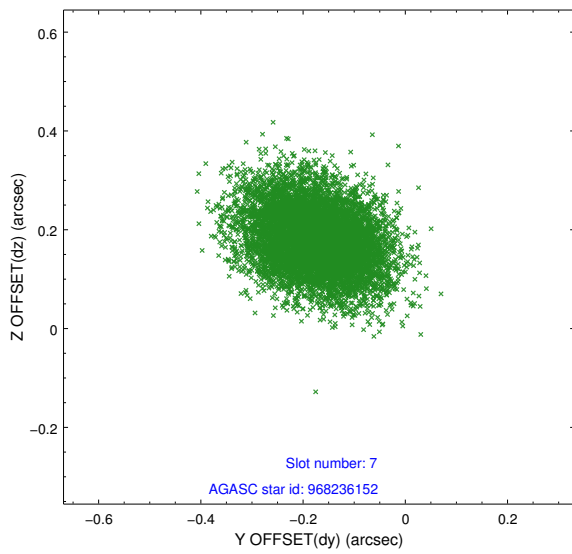
2.4.3 Slot 5



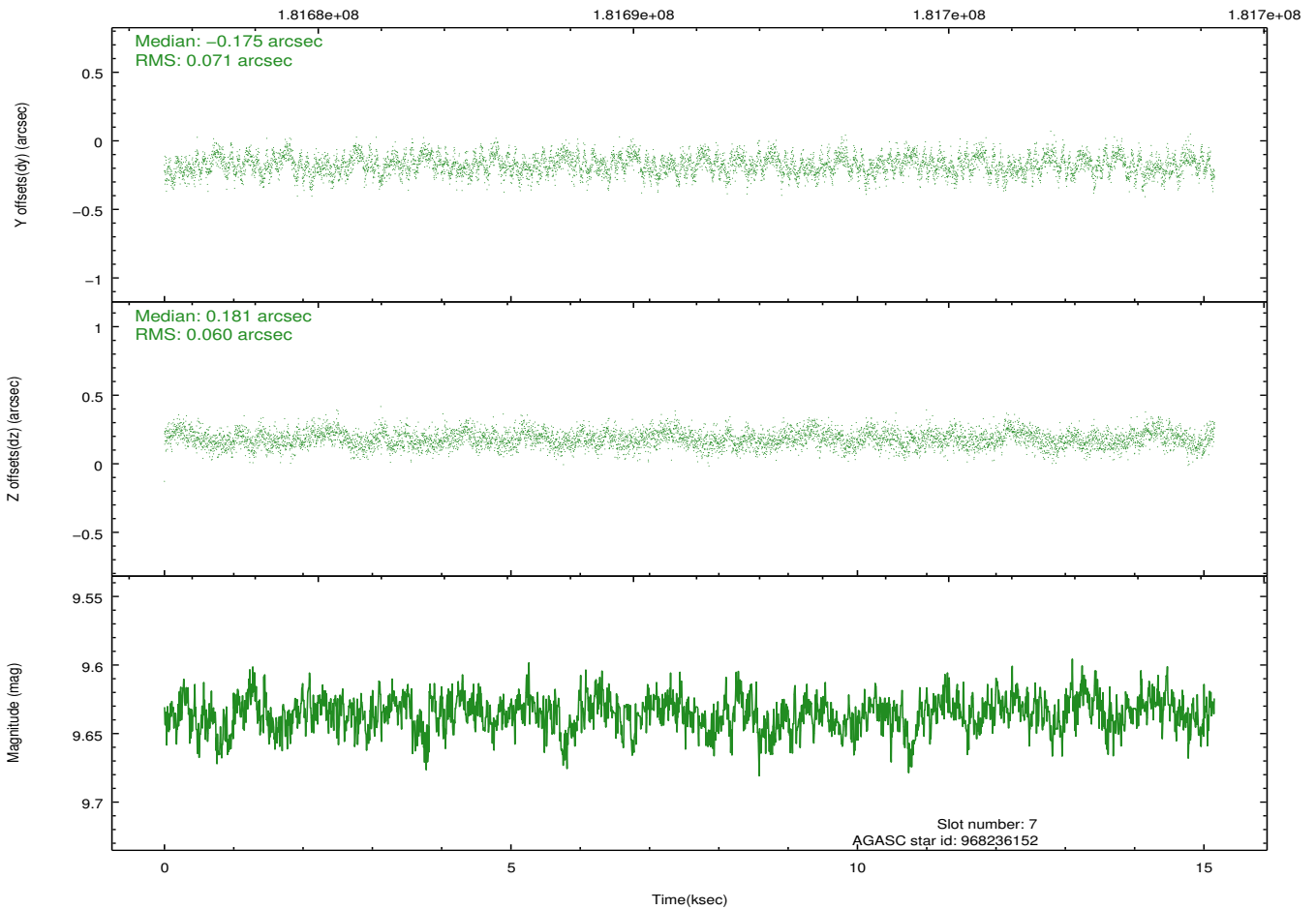
2.4.4 Slot 6



2.4.5 Slot 7

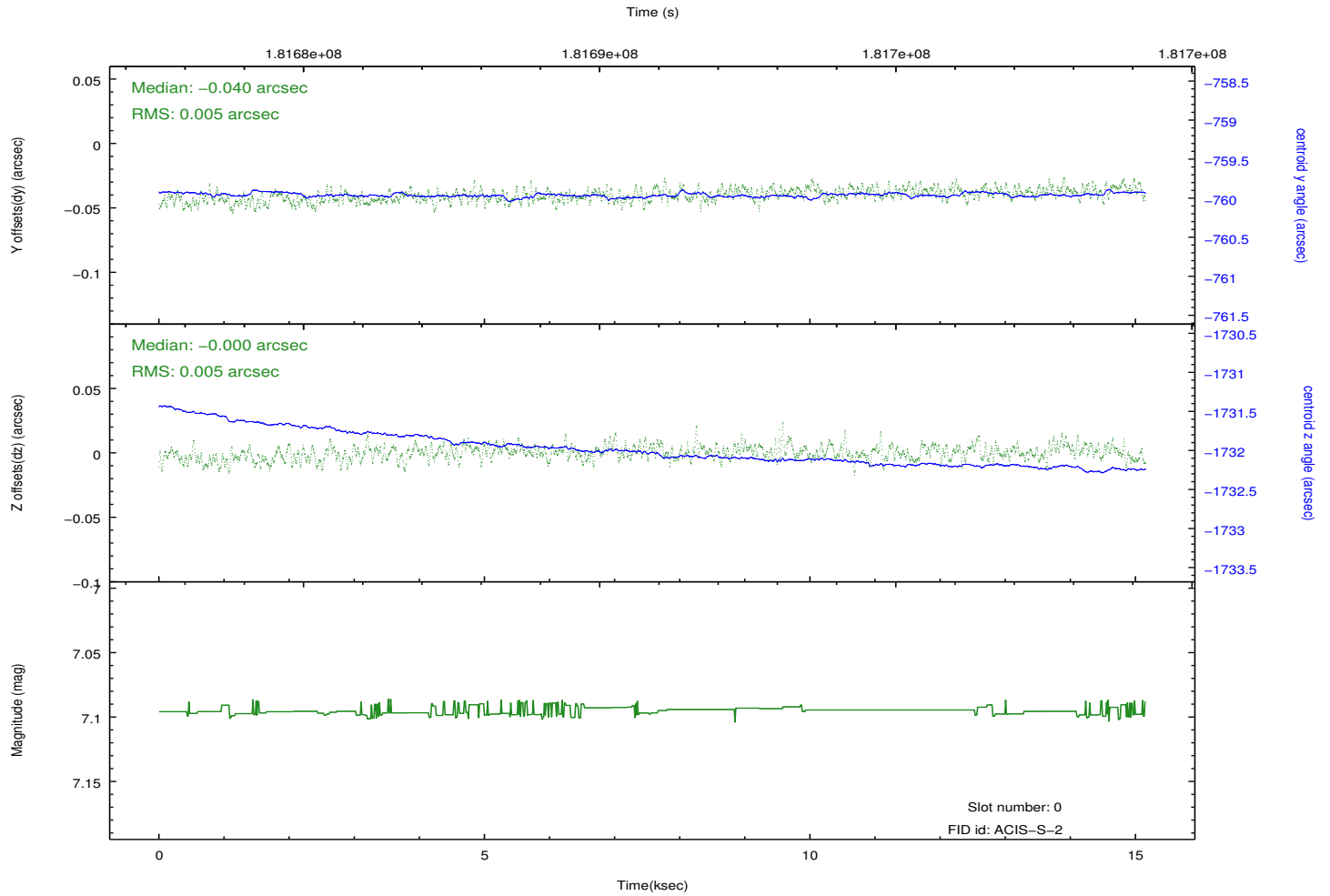
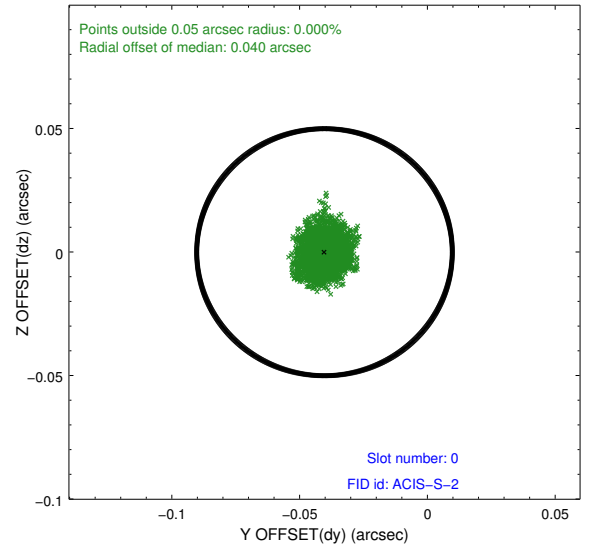
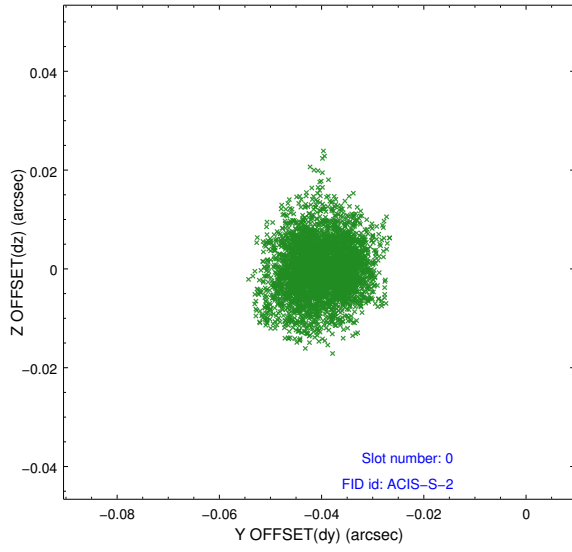


Time (s)

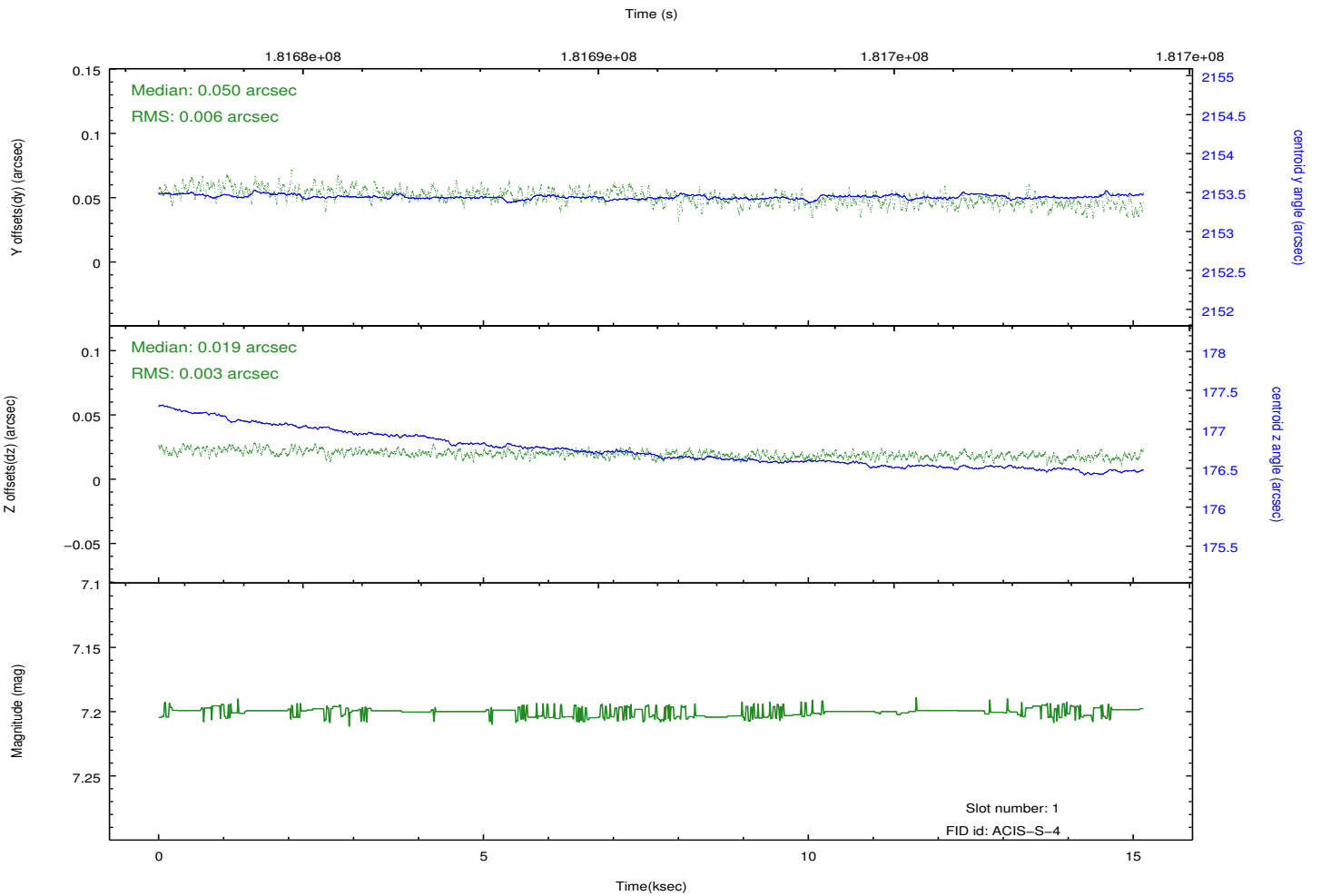
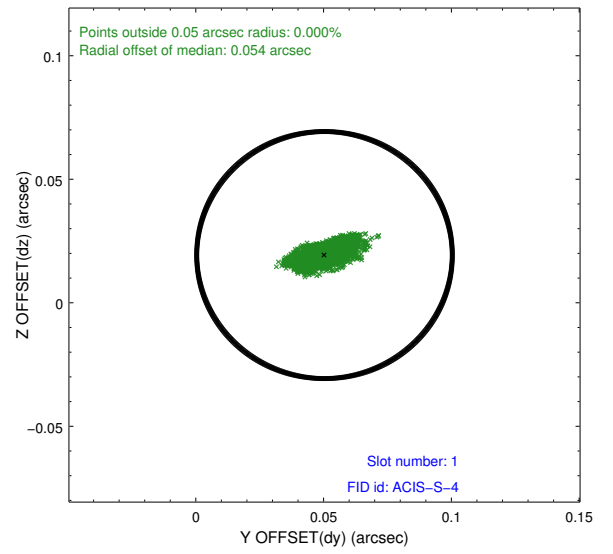
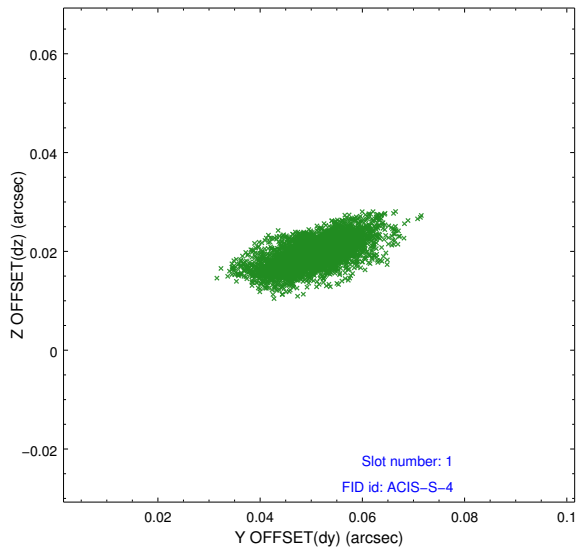


2.5 FID Slots

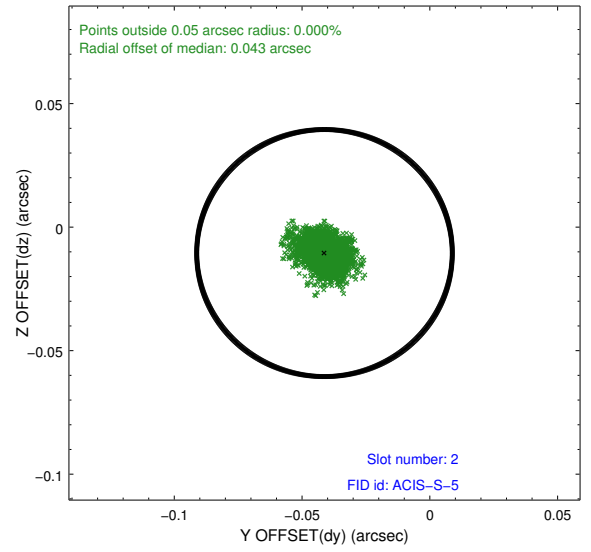
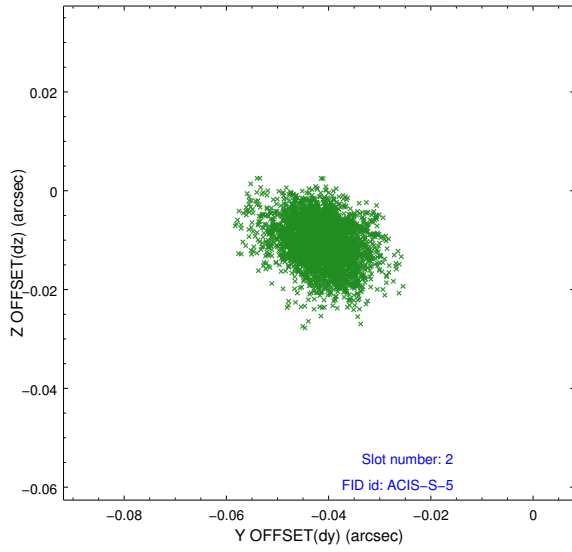
2.5.1 Slot 0



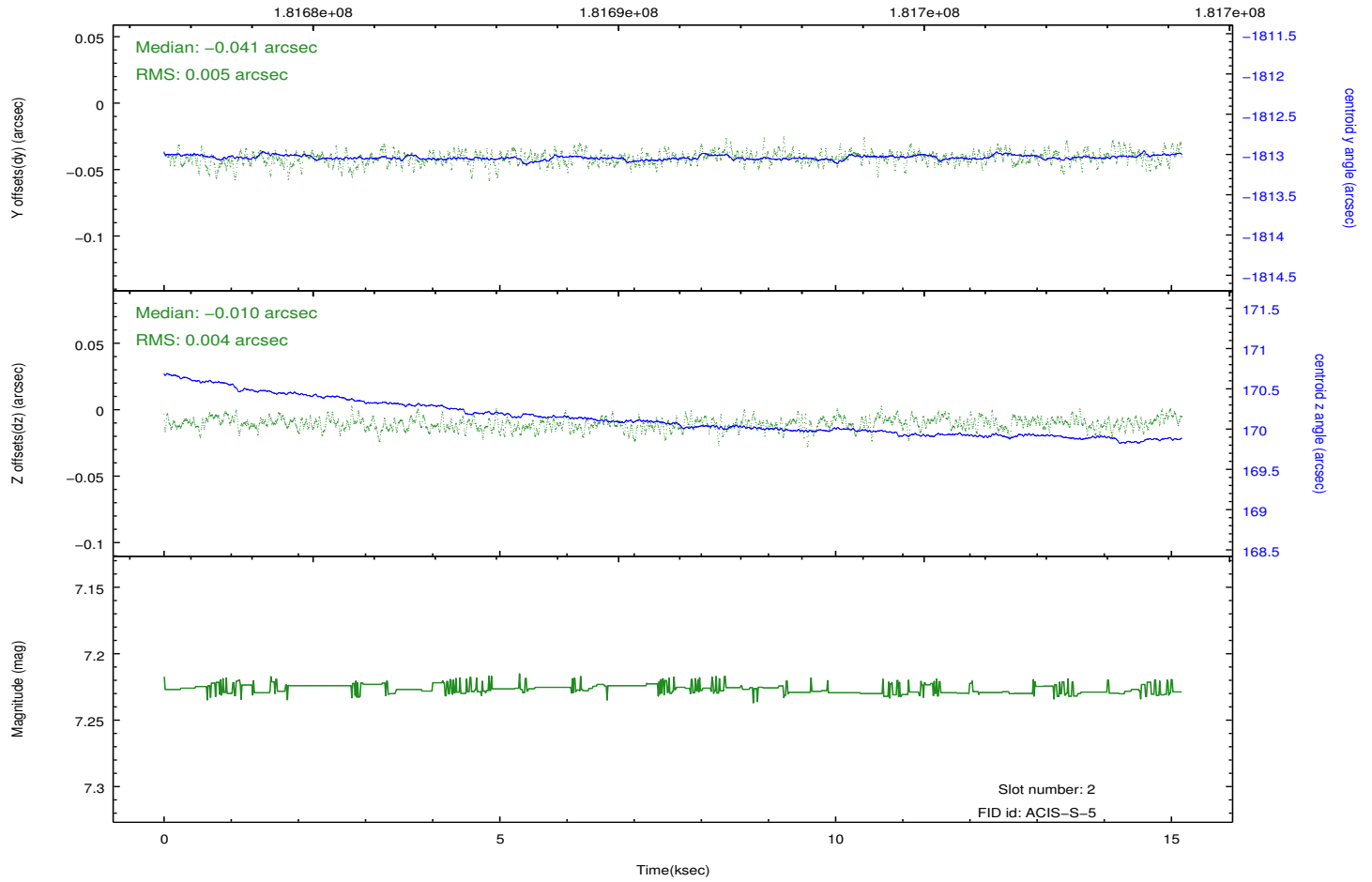
2.5.2 Slot 1



2.5.3 Slot 2



Time (s)



A Summary

A.1 Status

V&V Scientist	Jen Lauer
V&V Date (YYYY-MM-DD)	2012.11.30
V&V Edition	1
V&V Disposition and Status	OK
V&V Charge Time	14.963

A.2 Comments