

V&V Reference Report

L2 ASCDS Version : 8.4.5

Observation 4274 - L2 Version 3
Chandra X-Ray Center

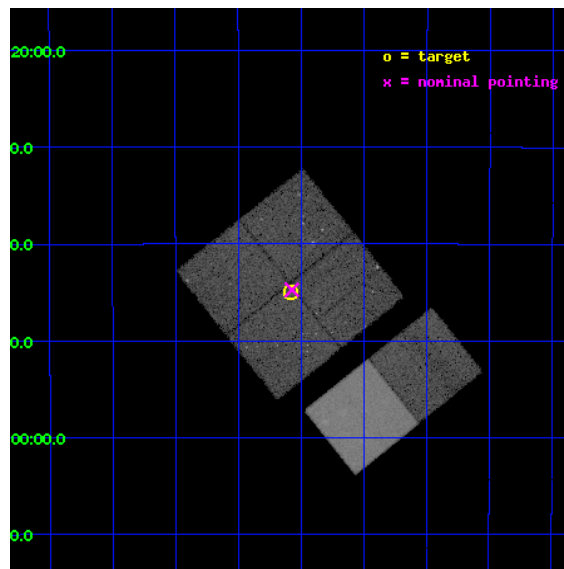
L2 Processing Date : Nov 1 2012

Contents

1	Front	2
2	OBI	3
2.1	OBI	3
2.1.1	Images	3
2.1.2	Bias	3
2.1.3	Parameters	4
2.1.4	Events	4
2.2	Compared Parameters	5
2.3	Aspect	6
2.4	Star Slots	9
2.4.1	Slot 3	9
2.4.2	Slot 4	10
2.4.3	Slot 5	11
2.4.4	Slot 6	12
2.4.5	Slot 7	13
2.5	FID Slots	14
2.5.1	Slot 0	14
2.5.2	Slot 1	15
2.5.3	Slot 2	16
A	Summary	17
A.1	Status	17
A.2	Comments	17

1 Front

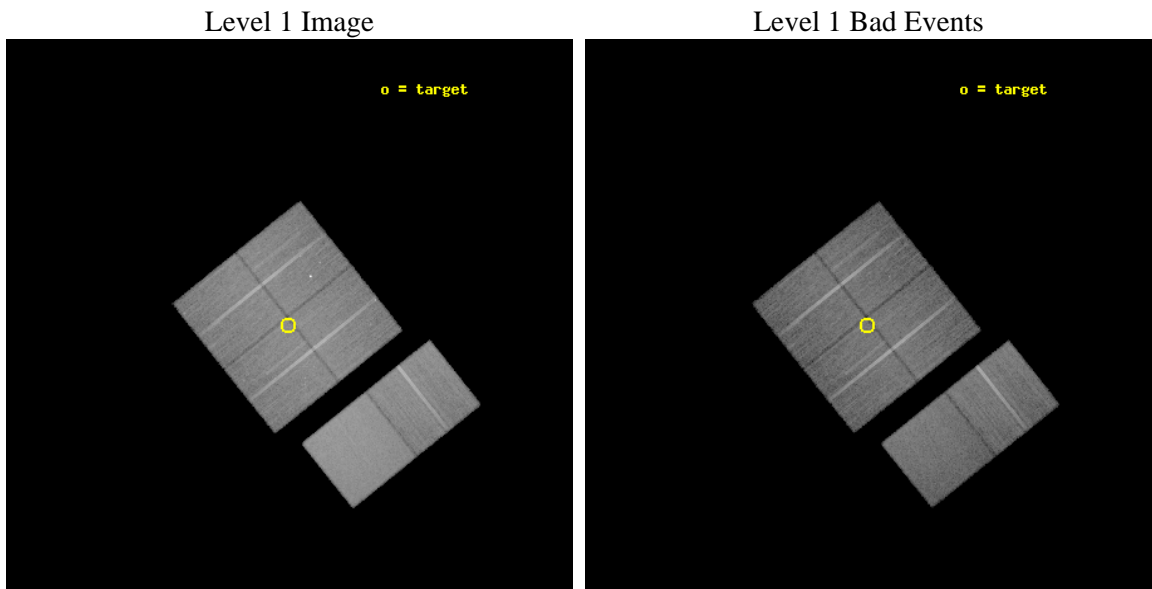
seq_num	900317	Sequence number
obs_id	4274	Observation id
title	CHASING QUASAR 2	Proposal title
observer	Dr Fabrizio Fiore	Principal investigator
object	PKS0537-28_2	Source name
dtcycle	0	
cycle	P	events from which exps? Prim/Second/Both
ra_targ	85.020833	Observer's specified target RA [deg]
dec_targ	-28.75	Observer's specified target Dec [deg]
ra_nom	85.018304027334	Nominal RA [deg]
dec_nom	-28.745921212691	Nominal Dec [deg]
roll_nom	141.32613916258	Nominal Roll [deg]
revision	3	Processing version of data
ontime	30182.399887562	Sum of GTIs [s]
livetime	29800.212166526	Livetime [s]
ontime0	30175.917907208	Sum of GTIs [s]
ontime1	30172.676996768	Sum of GTIs [s]
ontime2	30166.195006371	Sum of GTIs [s]
ontime3	30182.399887562	Sum of GTIs [s]
ontime6	30172.676936924	Sum of GTIs [s]
ontime7	30179.1589472	Sum of GTIs [s]
l2events	210038	Number of level 2 events



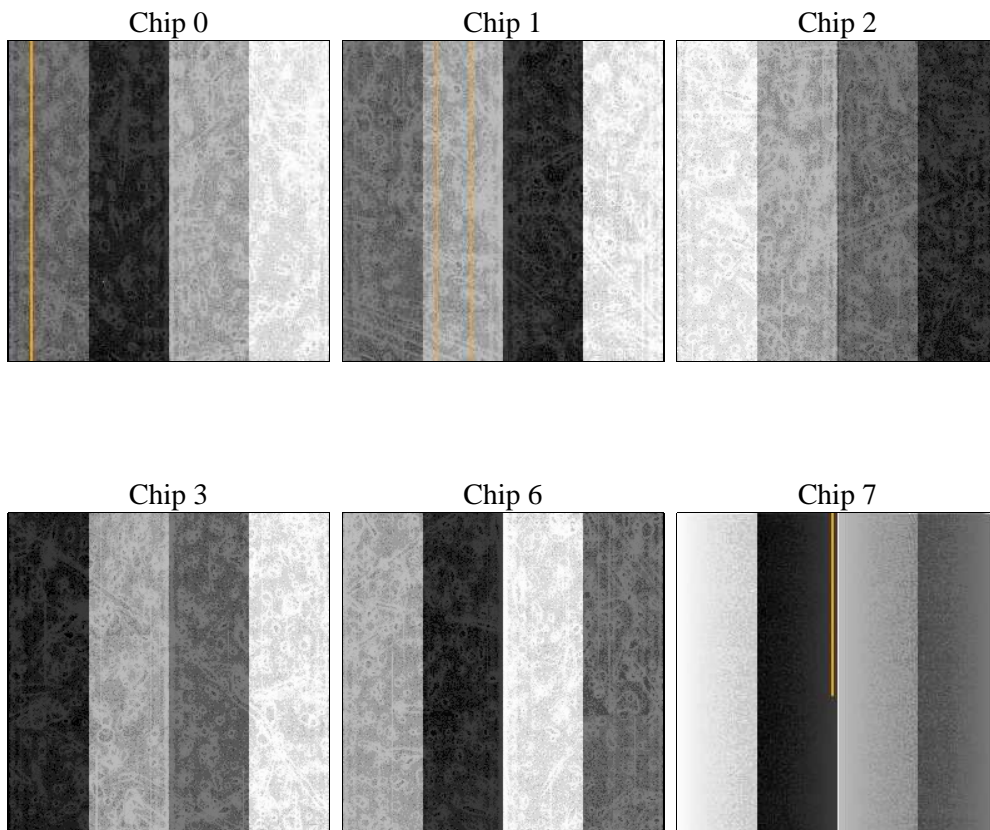
2 OBI

2.1 OBI

2.1.1 Images



2.1.2 Bias



2.1.3 Parameters

obi_num	0	Obi number	sched_exp_time	30000.000000	[s] Scheduled observation exposure time
ascdsver	8.4.5	Processing system revision	ontime	30182.399887562	Sum of GTIs [s]
caldbver	4.5.2	 	ontime0	30175.917907208	Sum of GTIs [s]
date	2012-11-01T05:40:45	Date and time of file creation	ontime1	30172.676996768	Sum of GTIs [s]
revision	3	Processing version of data	ontime2	30166.195006371	Sum of GTIs [s]
			ontime3	30182.399887562	Sum of GTIs [s]
			ontime6	30172.676936924	Sum of GTIs [s]
			ontime7	30179.1589472	Sum of GTIs [s]
			l1events	1152363	Number of level 1 events

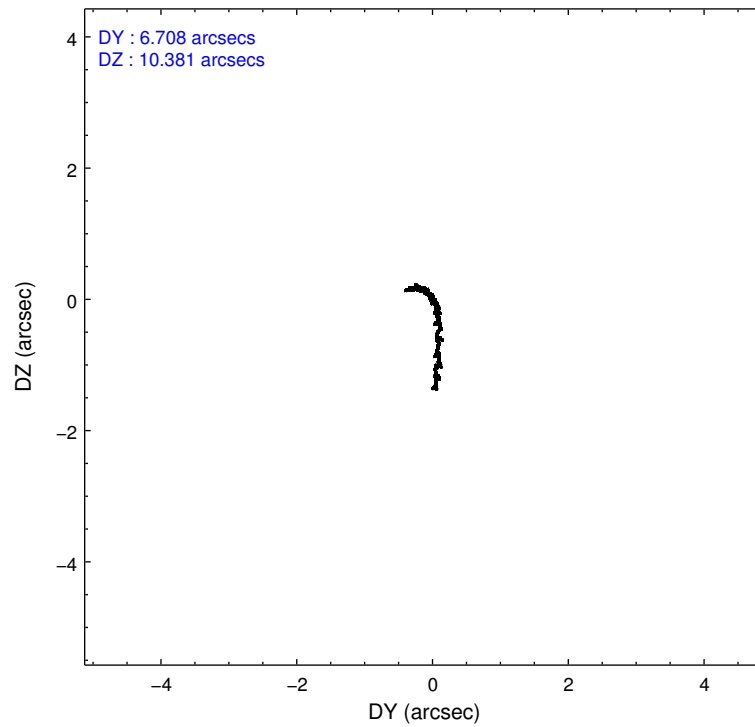
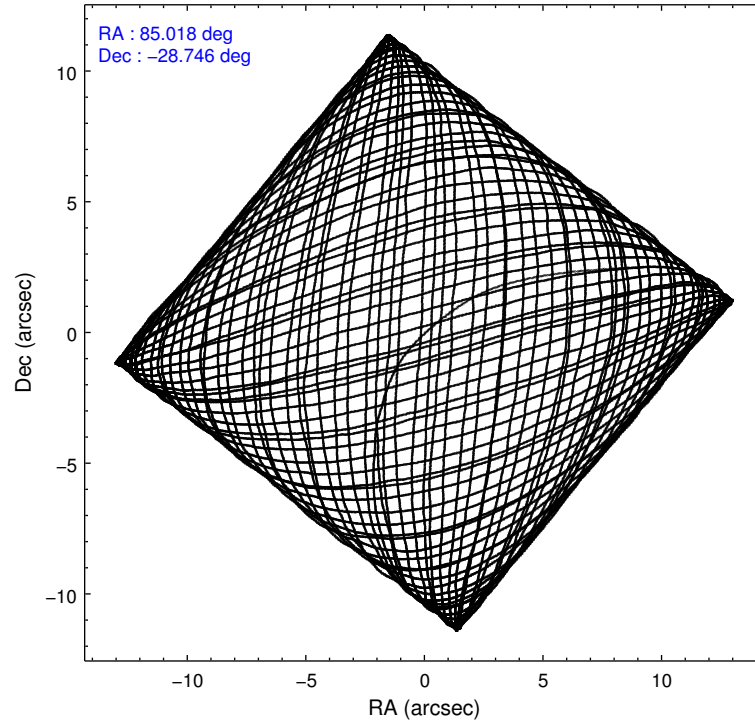
2.1.4 Events

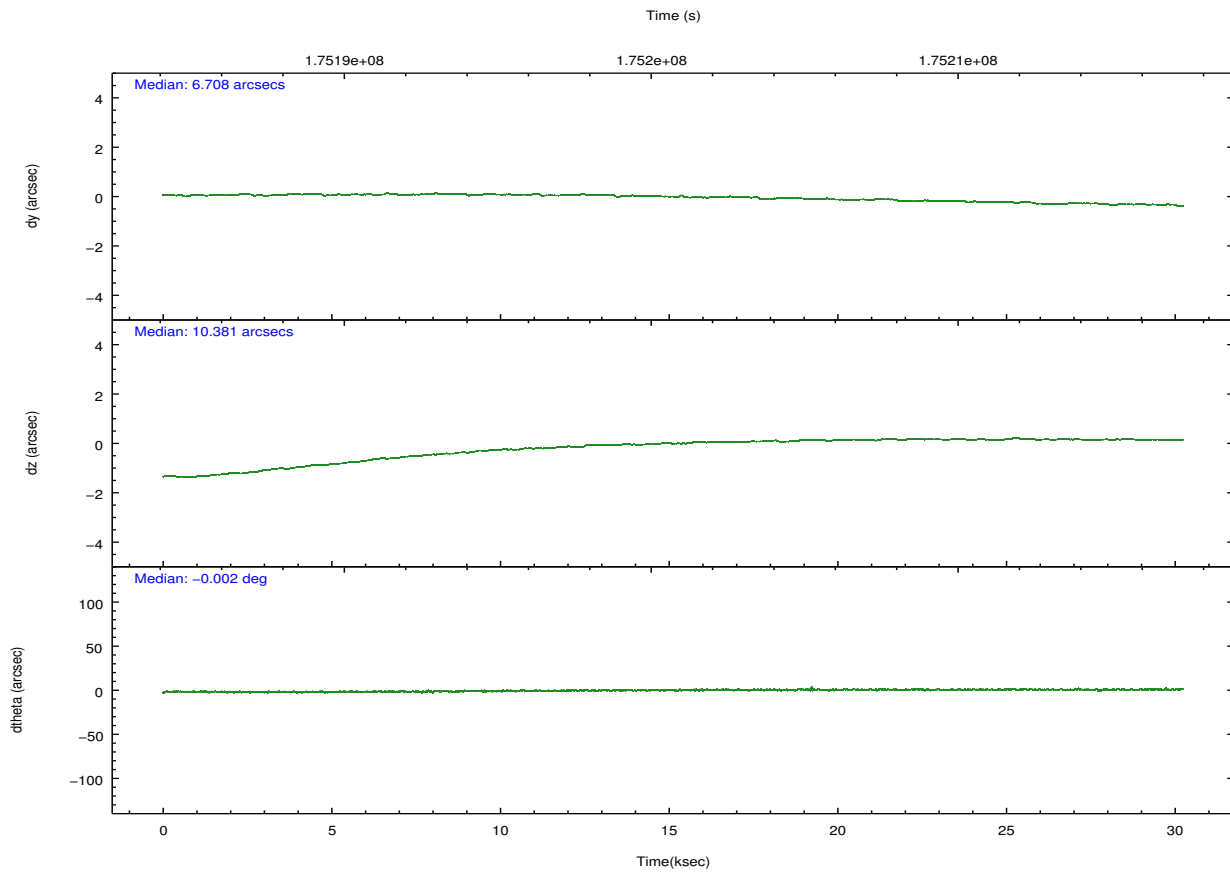
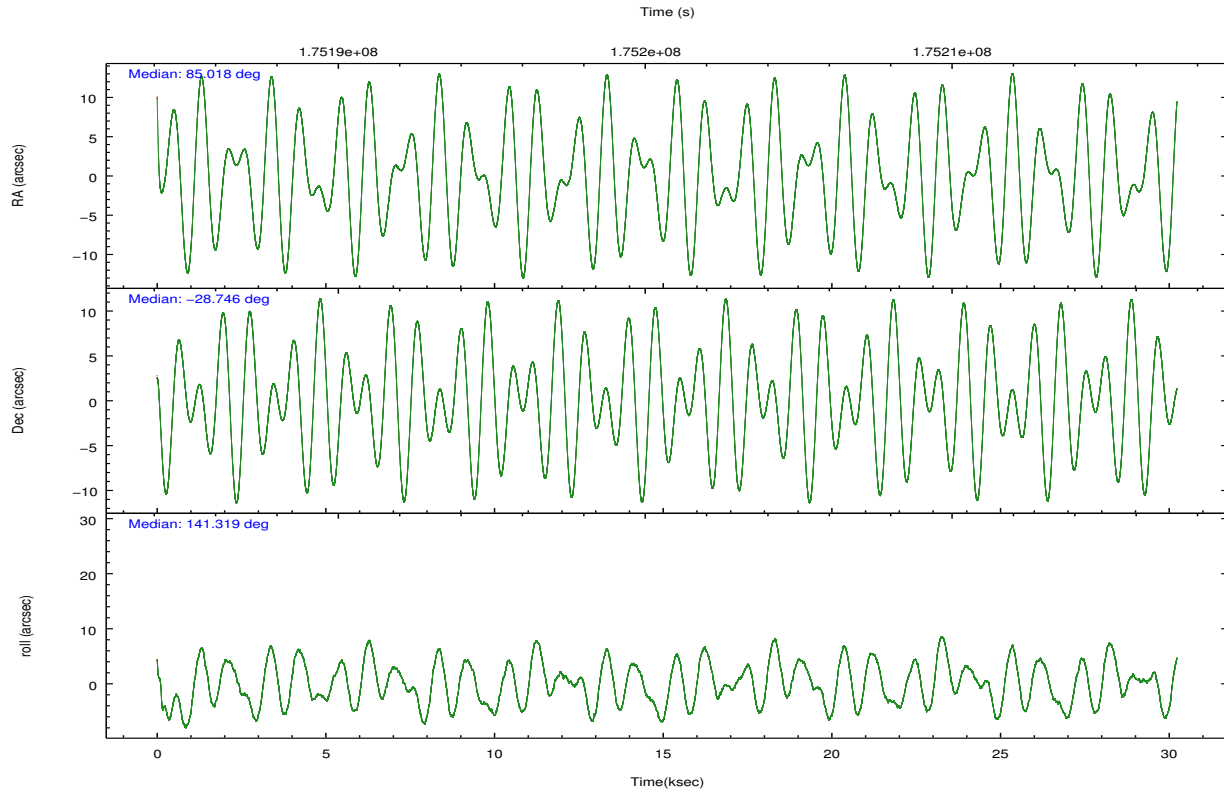
	ccd 0	ccd 1	ccd 2	ccd 3	ccd 6	ccd 7		ccd 0	ccd 1	ccd 2	ccd 3	ccd 6	ccd 7
level 1 events	172760	169723	182337	178123	193943	255477	grade 0 events	13091	9133	10626	10015	9437	10301
rejected events	145788	146597	159315	155970	170916	145755		7%	5%	5%	5%	4%	4%
rejected %	84%	86%	87%	87%	88%	57%	grade 1 events	160	87	94	106	96	242
								0%	0%	0%	0%	0%	0%
							grade 2 events	5102	4915	4485	4172	4635	21638
								2%	2%	2%	2%	2%	8%
							grade 3 events	2483	2272	2142	2129	2114	9653
								1%	1%	1%	1%	1%	3%
							grade 4 events	2233	2341	2132	2068	2186	9597
								1%	1%	1%	1%	1%	3%
							grade 5 events	7331	7710	7305	8073	8659	24082
								4%	4%	4%	4%	4%	9%
							grade 6 events	4088	4490	3662	3790	4674	58635
								2%	2%	2%	2%	2%	22%
							grade 7 events	138272	138775	151891	147770	162142	121329
								80%	81%	83%	82%	83%	47%

2.2 Compared Parameters

Parameter	Planned	Actual	Parameter	Planned	Actual
Instrument	ACIS	ACIS	Obspar format version number	7	7
Detector	ACIS-012367	ACIS-012367	Obspar file type	PREDICTED	ACTUAL
Grating	NONE	NONE	Obspar update status	NONE	UPDATED
Data mode	VFAINT	VFAINT	Number of optional ACIS chips dropped	0	0
Observation mode	POINTING	POINTING	On-chip summing requested	N	N
[deg] Pointing RA	85.049217	85.0183040273343	Subarray requested	NONE	NONE
[deg] Pointing Dec	-28.749940	-28.74592121269118	Alternating exposures requested	N	N
[deg] Pointing Roll	141.132323	141.3261391625802	[s] Primary exposure time	0.000000	3.2
[mm] SIM focus pos	-0.782348	-0.7809083437167272			
[mm] SIM defocus	0	0.001439871863259334			
[mm] SIM translation stage pos	-233.592463	-233.5874344608287			
[mm] SIM translation stage offset	0	-0.005018542100998502			
[s] Observation start time (MET)	175185788.184000	175184704.04018			
Observation start date	2003-07-21T14:42:04	2003-07-21T14:25:04			
[s] Observation end time (MET)	175215788.184000	175216143.86652			
Observation end date	2003-07-21T23:02:04	2003-07-21T23:09:03			
Read mode	TIMED	TIMED			

2.3 Aspect



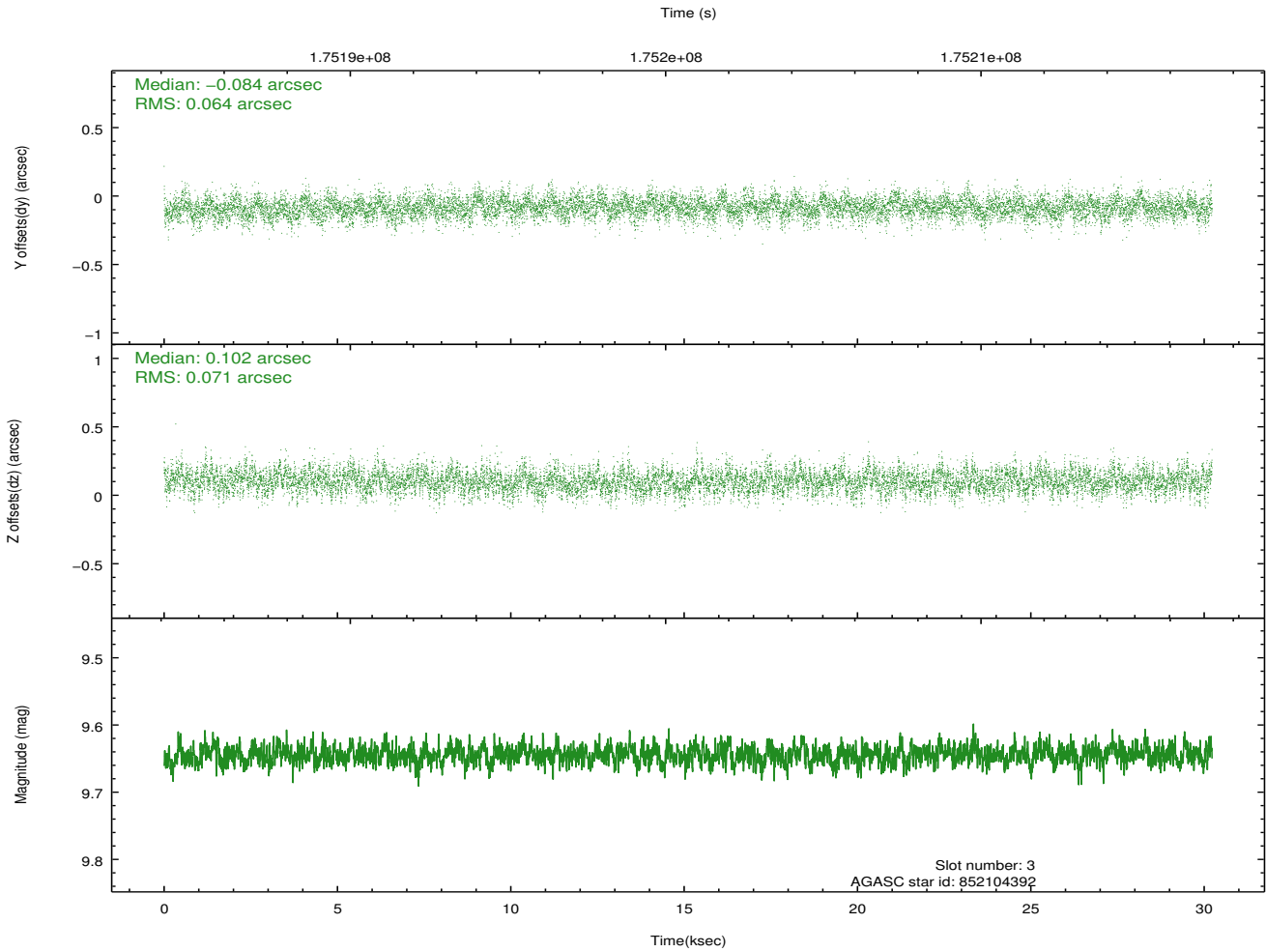
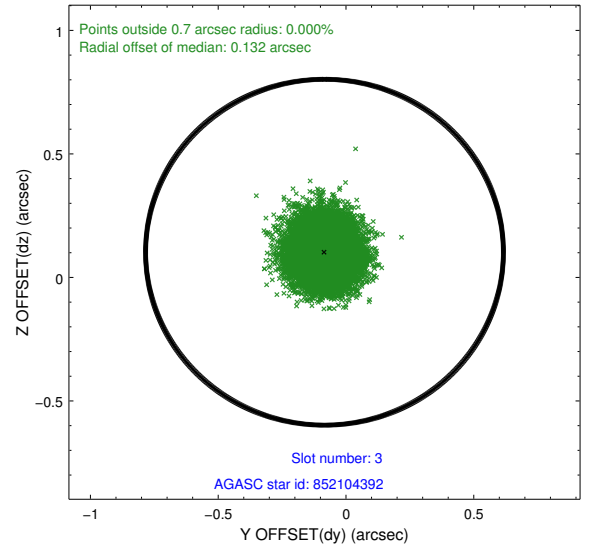
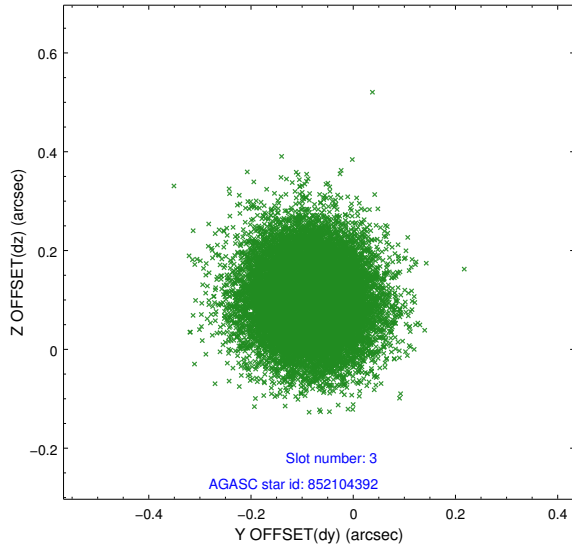


Slot Statistics

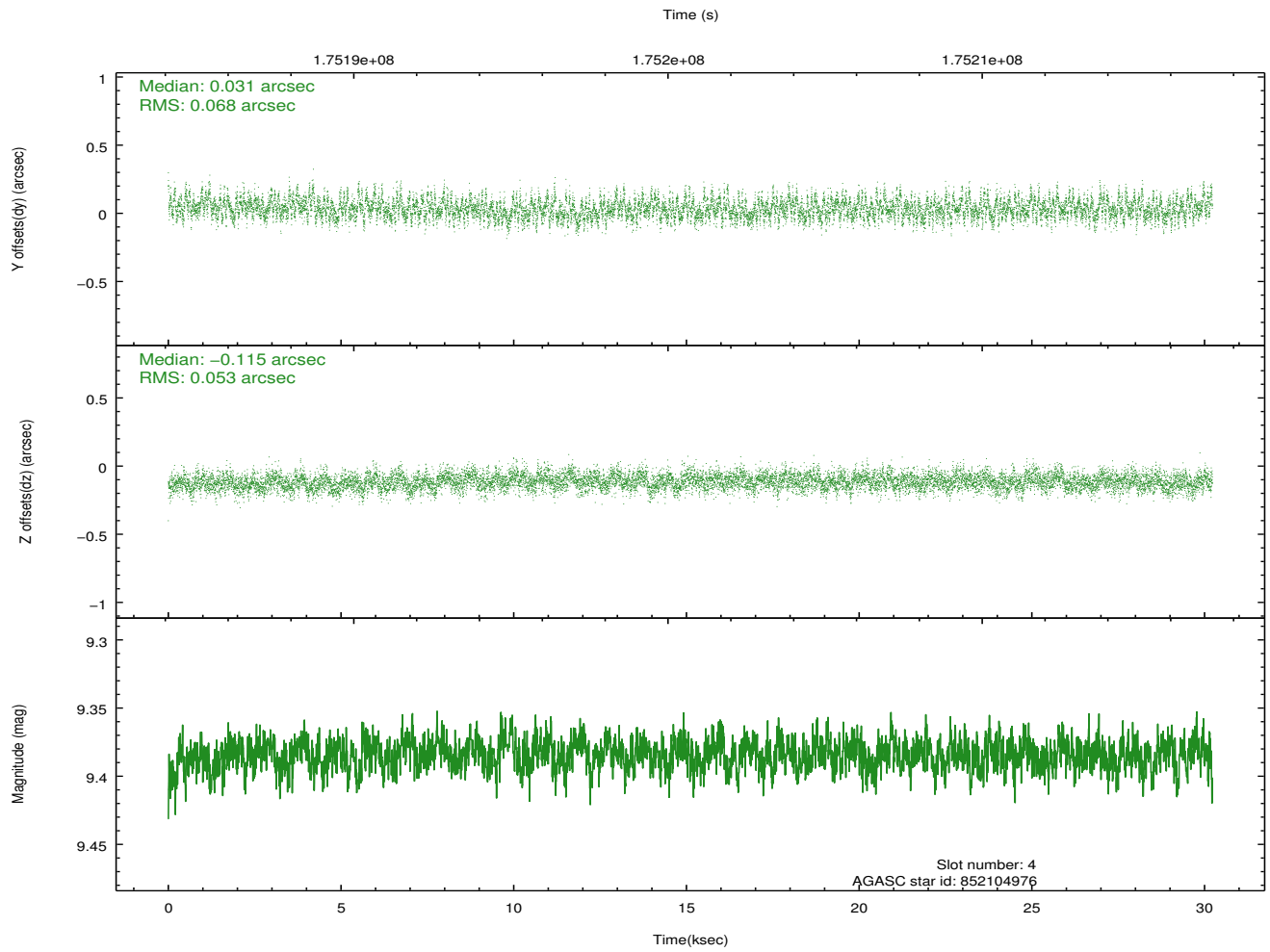
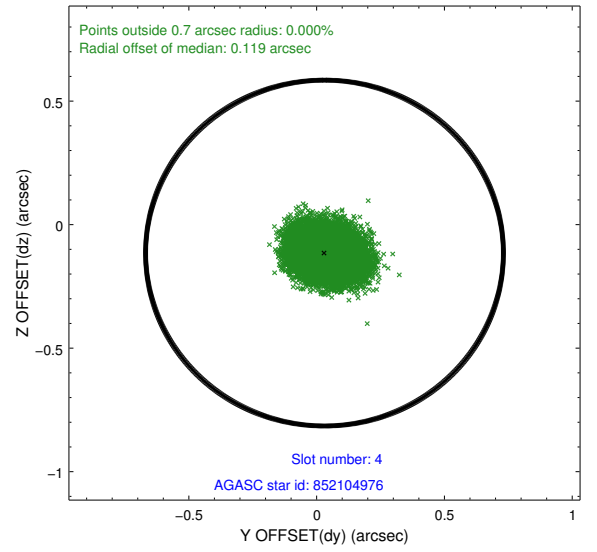
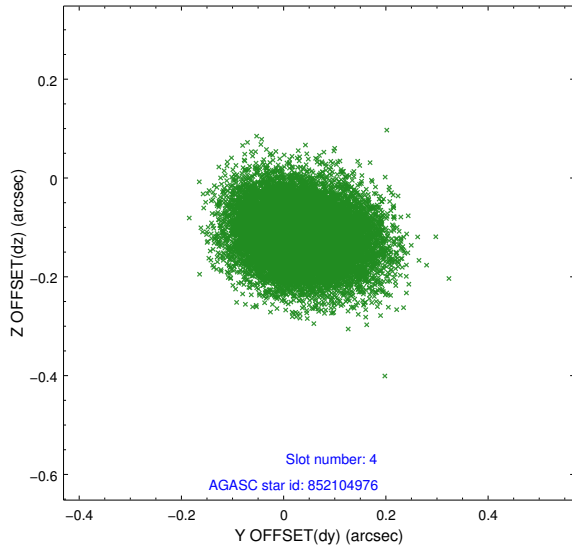
slot	status	id	mag	n_pts	med_dy	med_dz	dr1	dr2	ra	dec	mean_y	mean_z
0	FID	ACIS-I-1	7.24	7370	0.014	0.000	0.016	0.062	0.000000	0.000000	933.04	-833.62
1	FID	ACIS-I-5	7.23	7370	-0.138	0.037	0.012	0.024	0.000000	0.000000	-1815.16	1063.87
2	FID	ACIS-I-6	7.25	7370	0.036	0.031	0.014	0.045	0.000000	0.000000	398.55	1708.43
3	GUIDE	852104392	9.64	14730	-0.084	0.102	0.102	0.165	84.801236	-28.156754	1952.66	-1167.62
4	GUIDE	852104976	9.38	14733	0.031	-0.115	0.091	0.150	85.108230	-29.481713	-1797.07	1934.95
5	GUIDE	852106712	9.38	14736	-0.075	0.099	0.089	0.147	85.194465	-28.273363	718.19	-1624.08
6	GUIDE	852108824	8.14	14738	-0.006	-0.085	0.068	0.106	84.638223	-28.836492	812.49	1057.74
7	GUIDE	852108960	9.34	14734	0.130	-0.003	0.089	0.145	85.052256	-29.099645	-797.19	974.38

2.4 Star Slots

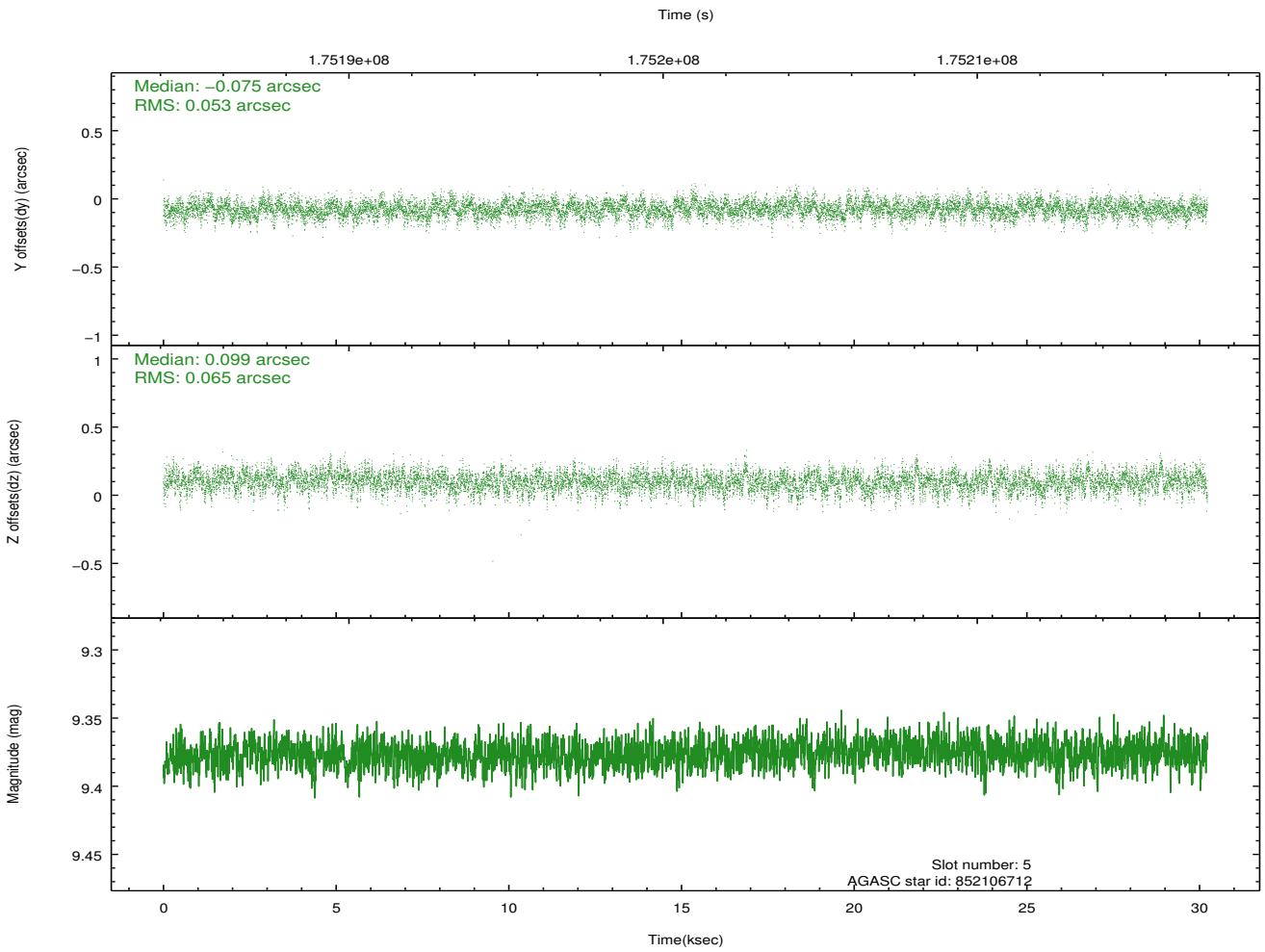
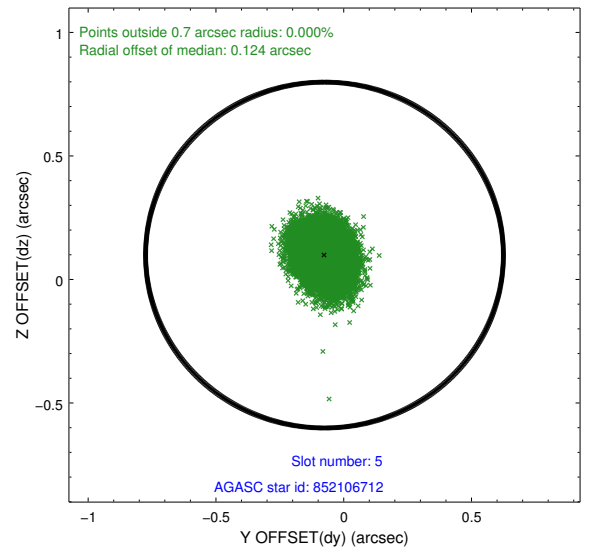
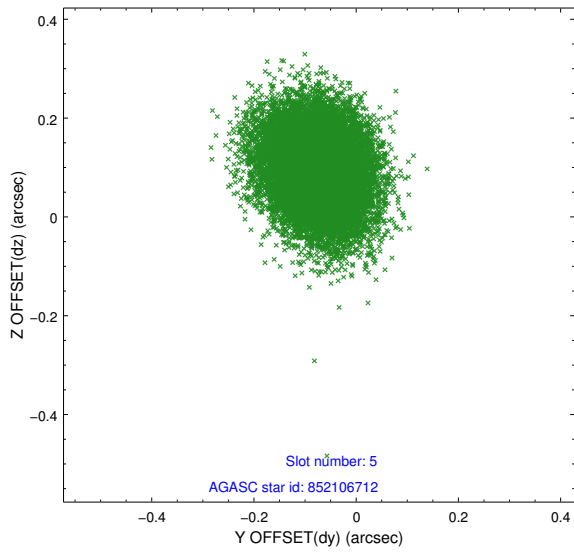
2.4.1 Slot 3



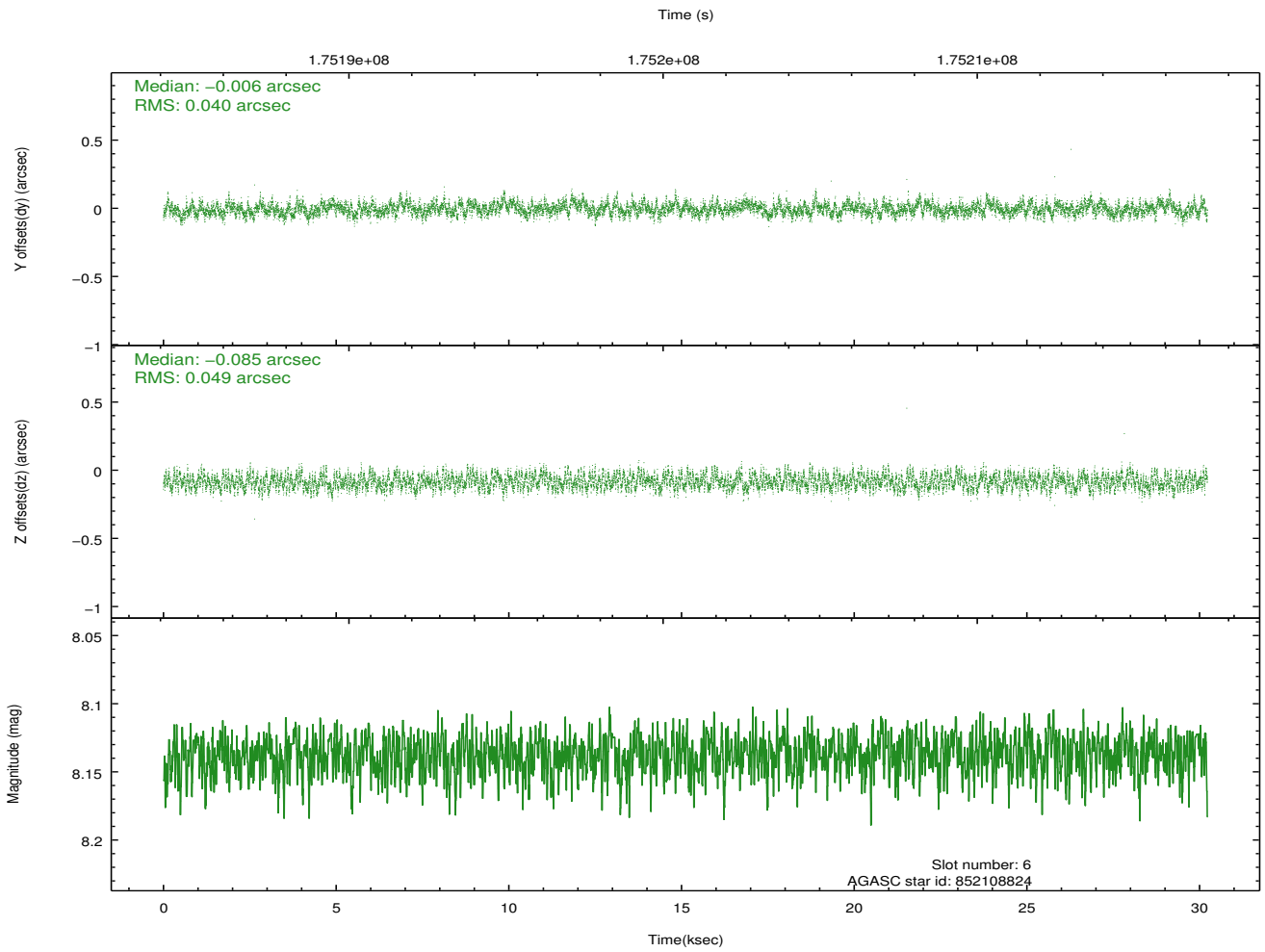
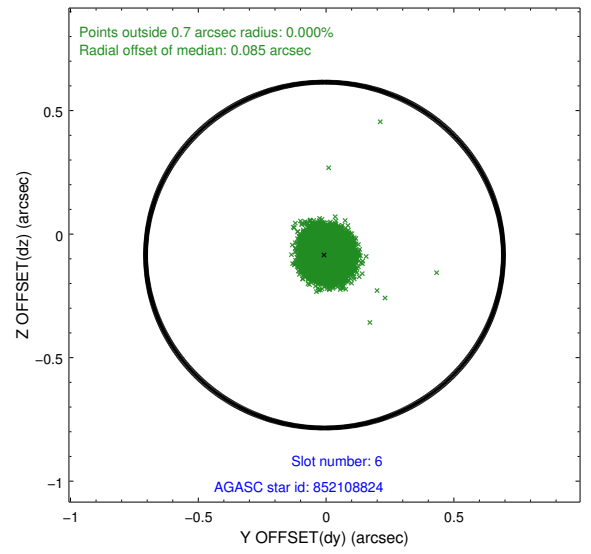
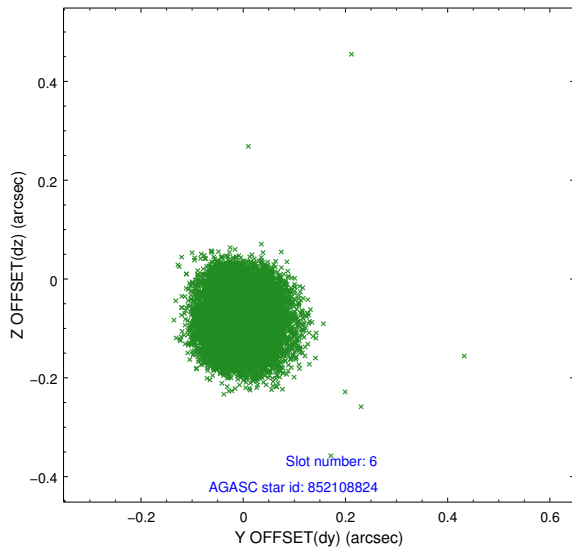
2.4.2 Slot 4



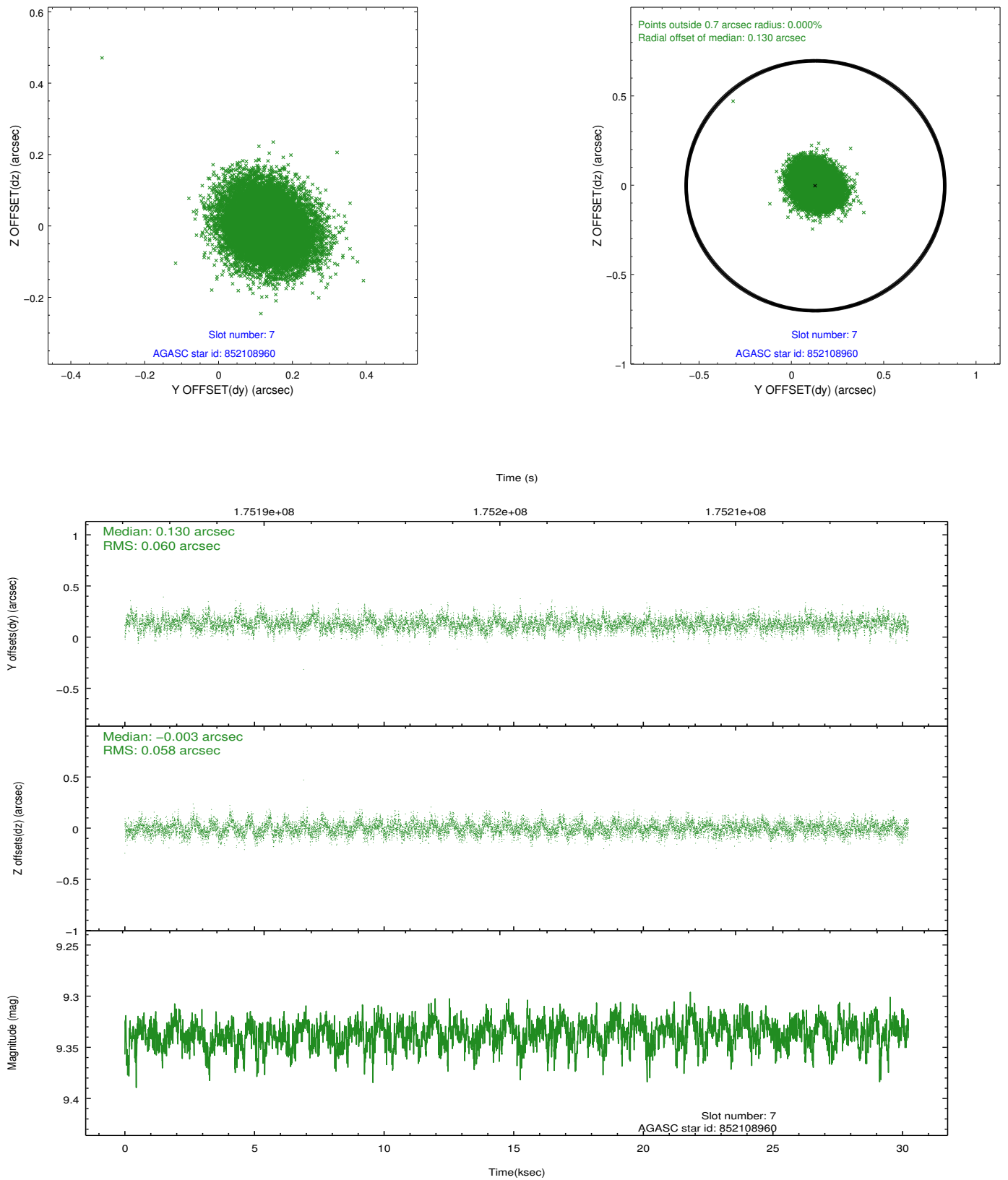
2.4.3 Slot 5



2.4.4 Slot 6

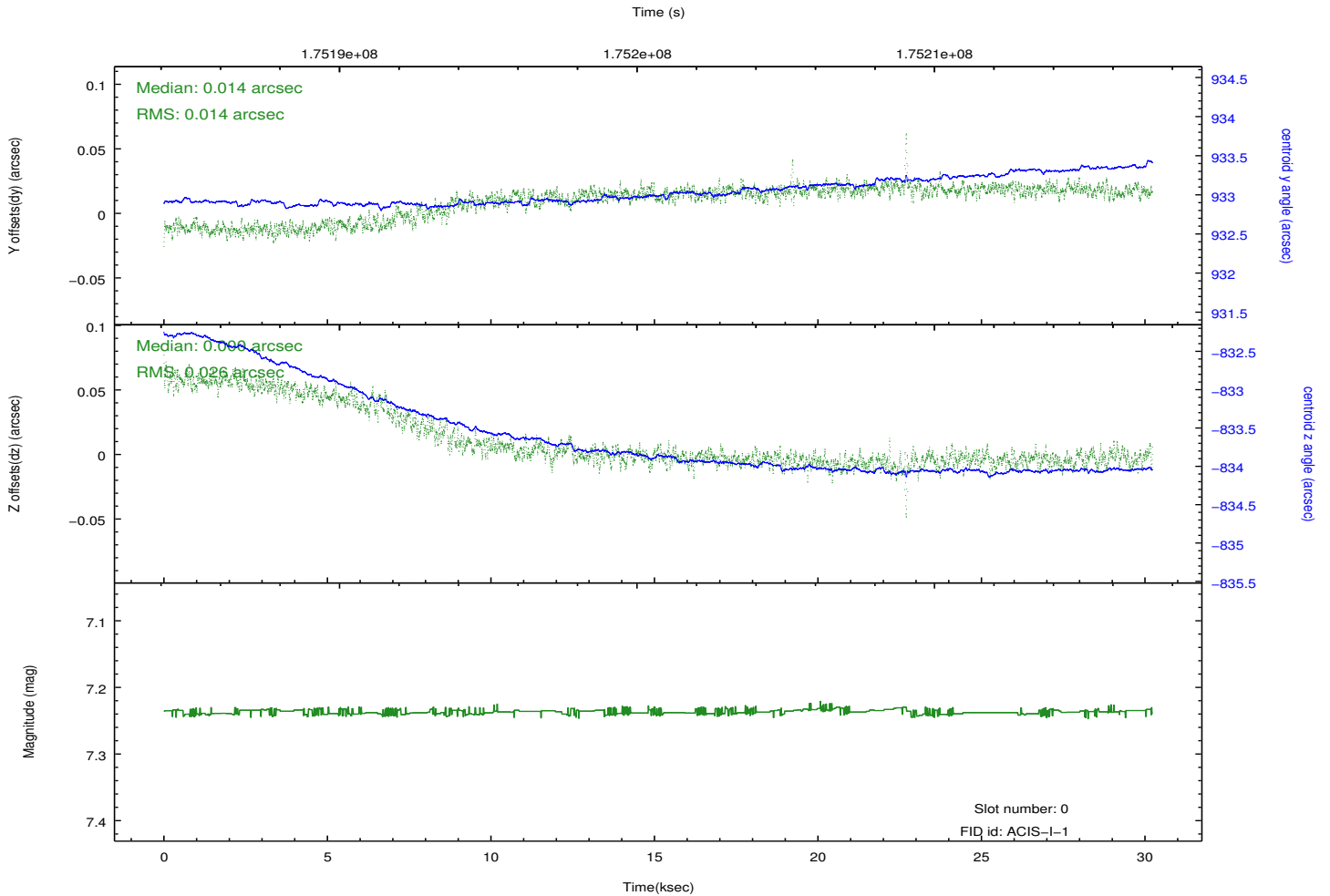
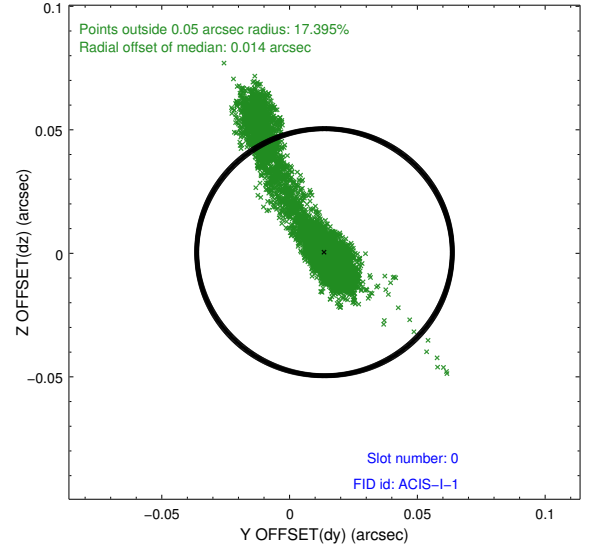
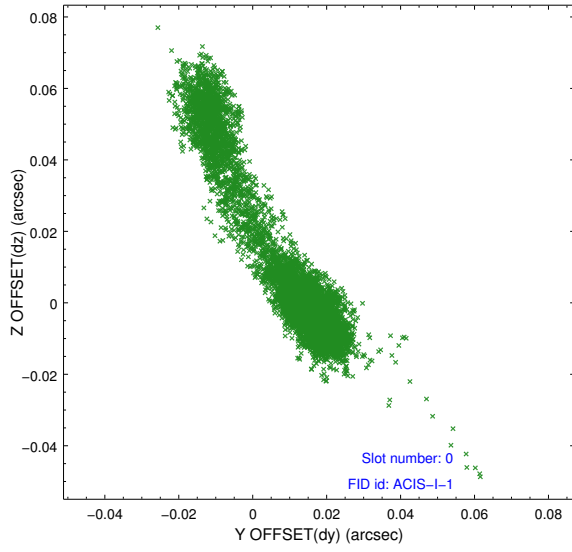


2.4.5 Slot 7

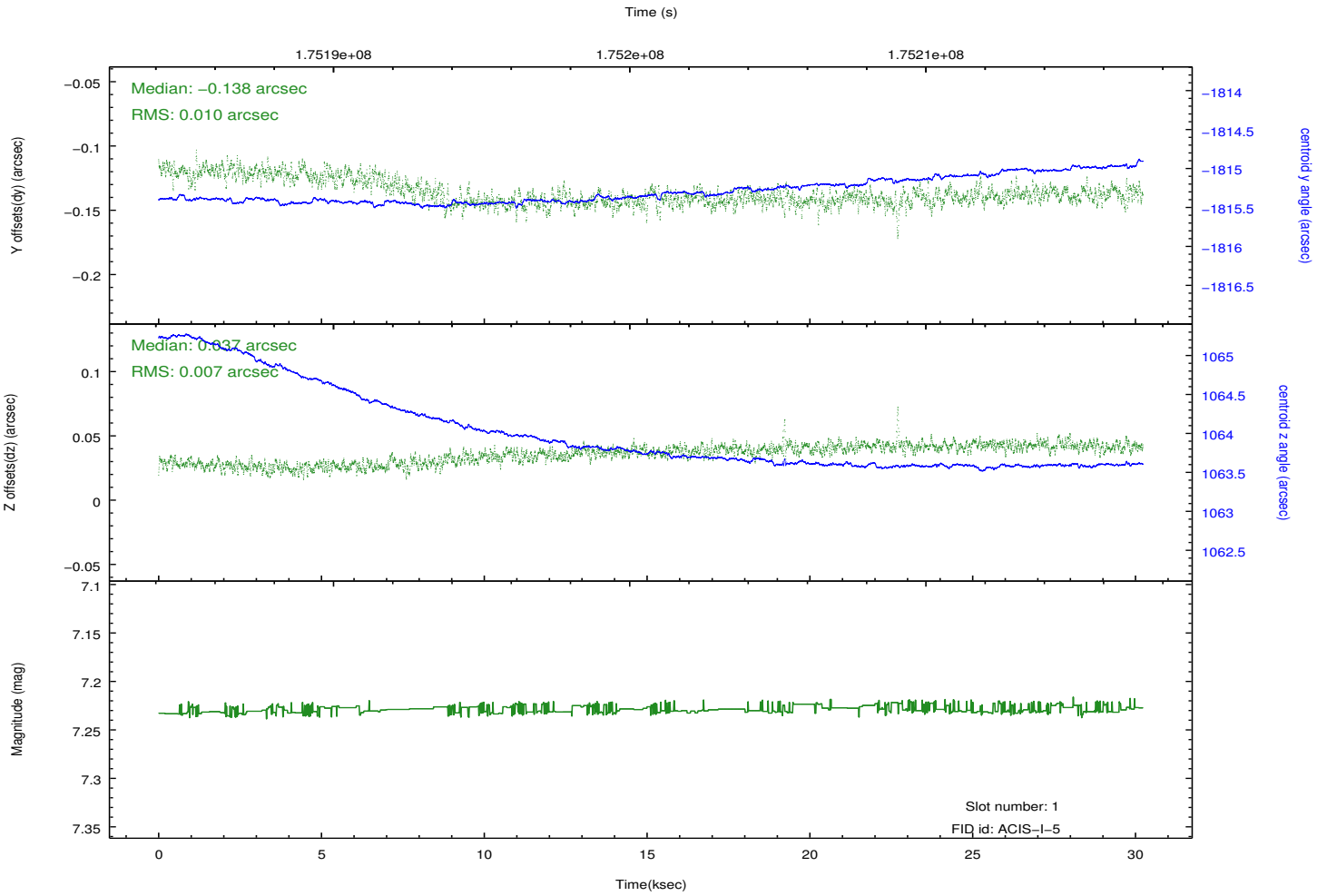
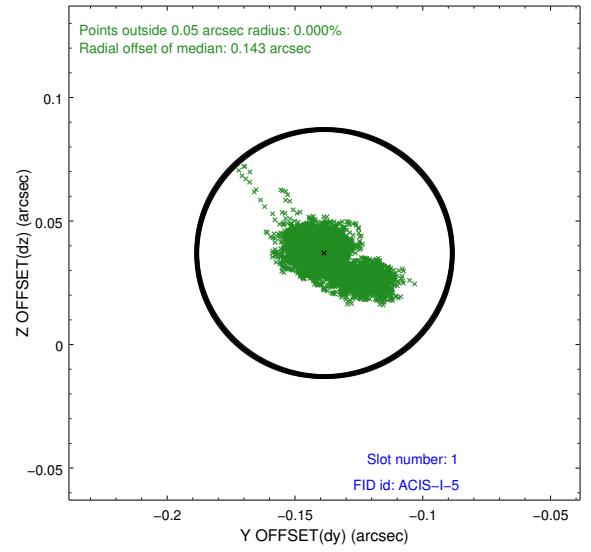
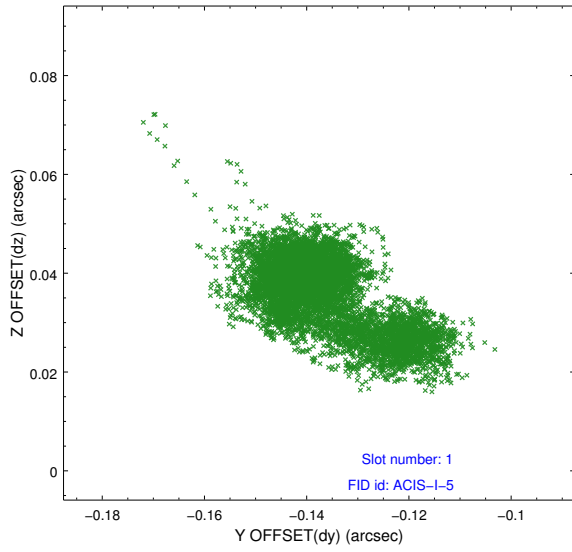


2.5 FID Slots

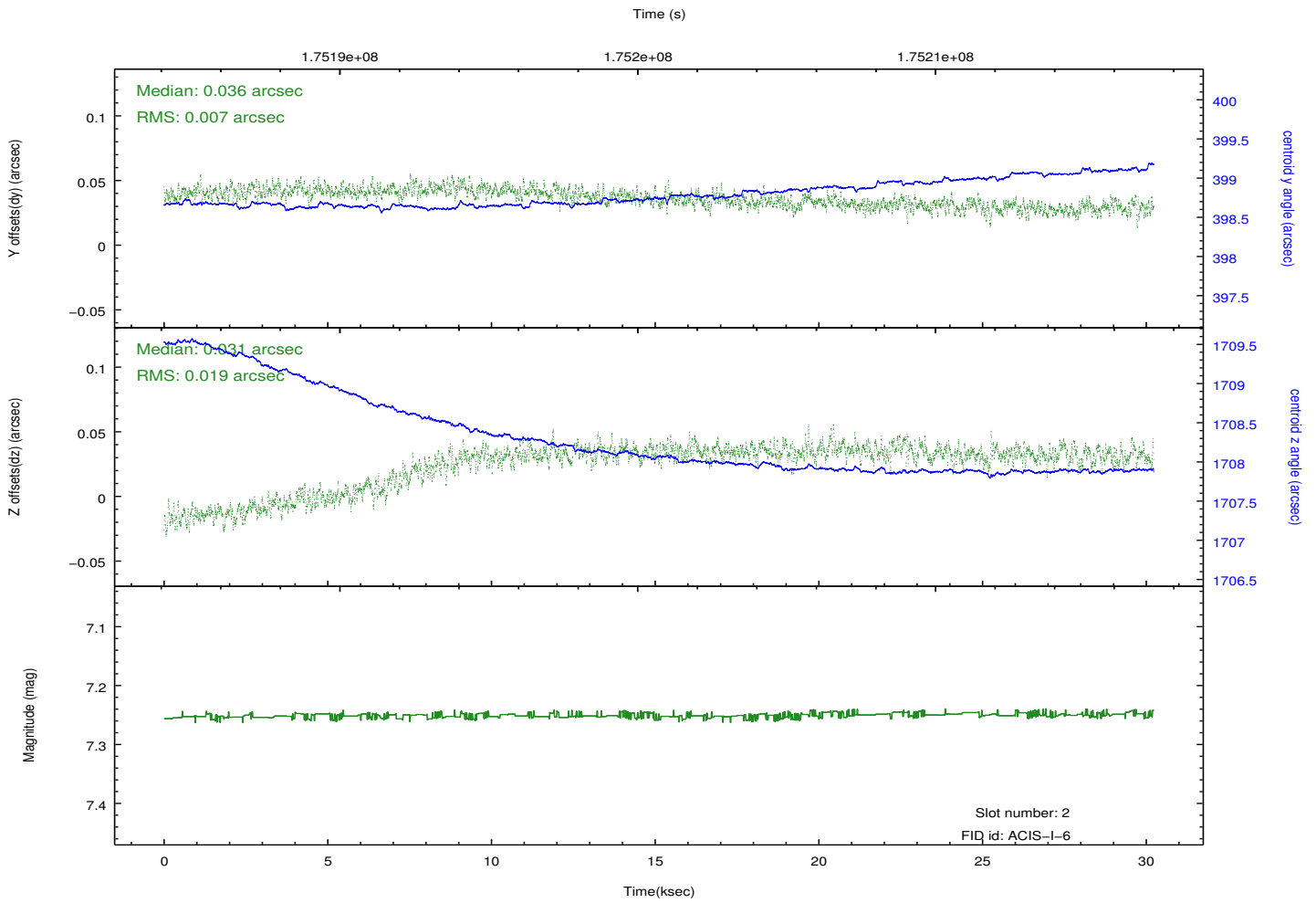
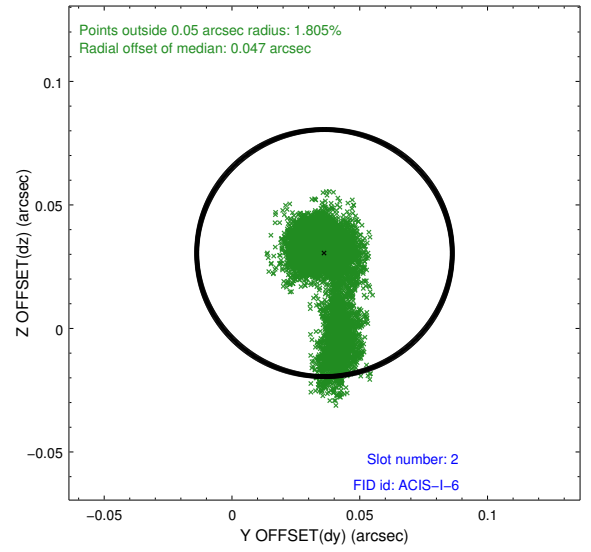
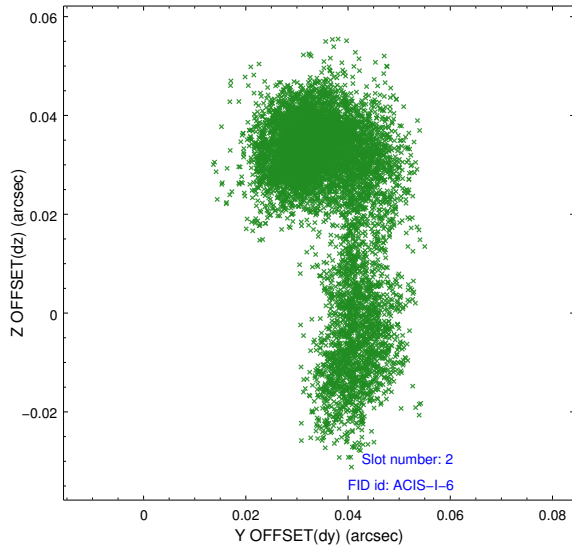
2.5.1 Slot 0



2.5.2 Slot 1



2.5.3 Slot 2



A Summary

A.1 Status

V&V Scientist	Jen Lauer
V&V Date (YYYY-MM-DD)	2012.11.16
V&V Edition	1
V&V Disposition and Status	OK
V&V Charge Time	30.182

A.2 Comments