

# V&V Reference Report

## L2 ASCDS Version : 8.5.1

Observation 4554 - L2 Version 3  
Chandra X-Ray Center

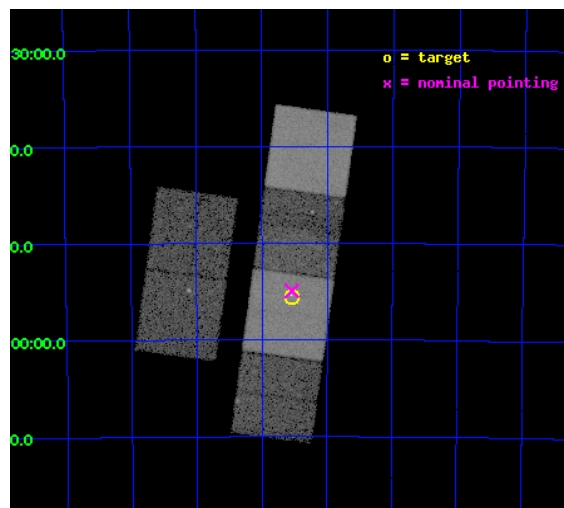
L2 Processing Date : Dec 15 2012

## Contents

<b>1</b>	<b>Front</b>	<b>2</b>
<b>2</b>	<b>OBI</b>	<b>3</b>
2.1	OBI . . . . .	3
2.1.1	Images . . . . .	3
2.1.2	Bias . . . . .	3
2.1.3	Parameters . . . . .	4
2.1.4	Events . . . . .	4
2.2	Compared Parameters . . . . .	5
2.3	Aspect . . . . .	6
2.4	Star Slots . . . . .	9
2.4.1	Slot 3 . . . . .	9
2.4.2	Slot 4 . . . . .	10
2.4.3	Slot 5 . . . . .	11
2.4.4	Slot 6 . . . . .	12
2.4.5	Slot 7 . . . . .	13
2.5	FID Slots . . . . .	14
2.5.1	Slot 0 . . . . .	14
2.5.2	Slot 1 . . . . .	15
2.5.3	Slot 2 . . . . .	16
<b>A</b>	<b>Summary</b>	<b>17</b>
A.1	Status . . . . .	17
A.2	Comments . . . . .	17

# 1 Front

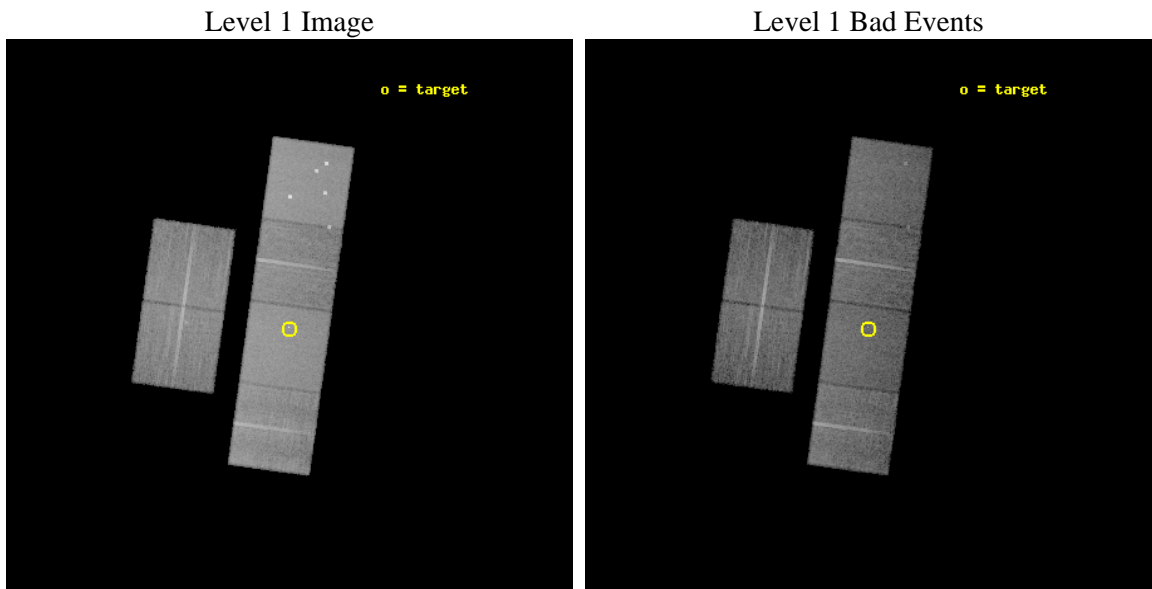
seq_num	400337	Sequence number
obs_id	4554	Observation id
title	1WGA J1346.5-6255: A New High-Mass Microquasar?	Proposal title
observer	Dr. Yousaf Butt	Principal investigator
object	1WGA J1346.5-6255	Source name
dtcycle	0	&#160
cycle	P	events from which exps? Prim/Second/Both
ra_targ	206.634583	Observer's specified target RA [deg]
dec_targ	-62.925	Observer's specified target Dec [deg]
ra_nom	206.63534167136	Nominal RA [deg]
dec_nom	-62.915338934772	Nominal Dec [deg]
roll_nom	97.926663826217	Nominal Roll [deg]
revision	3	Processing version of data
ontime	15116.799943686	Sum of GTIs [s]
livetime	14925.381920554	Livetime [s]
ontime2	15116.799943686	Sum of GTIs [s]
ontime3	15116.799943686	Sum of GTIs [s]
ontime5	15116.799943686	Sum of GTIs [s]
ontime6	15113.558983415	Sum of GTIs [s]
ontime7	15116.799943686	Sum of GTIs [s]
ontime8	15113.558973402	Sum of GTIs [s]
l2events	199495	Number of level 2 events



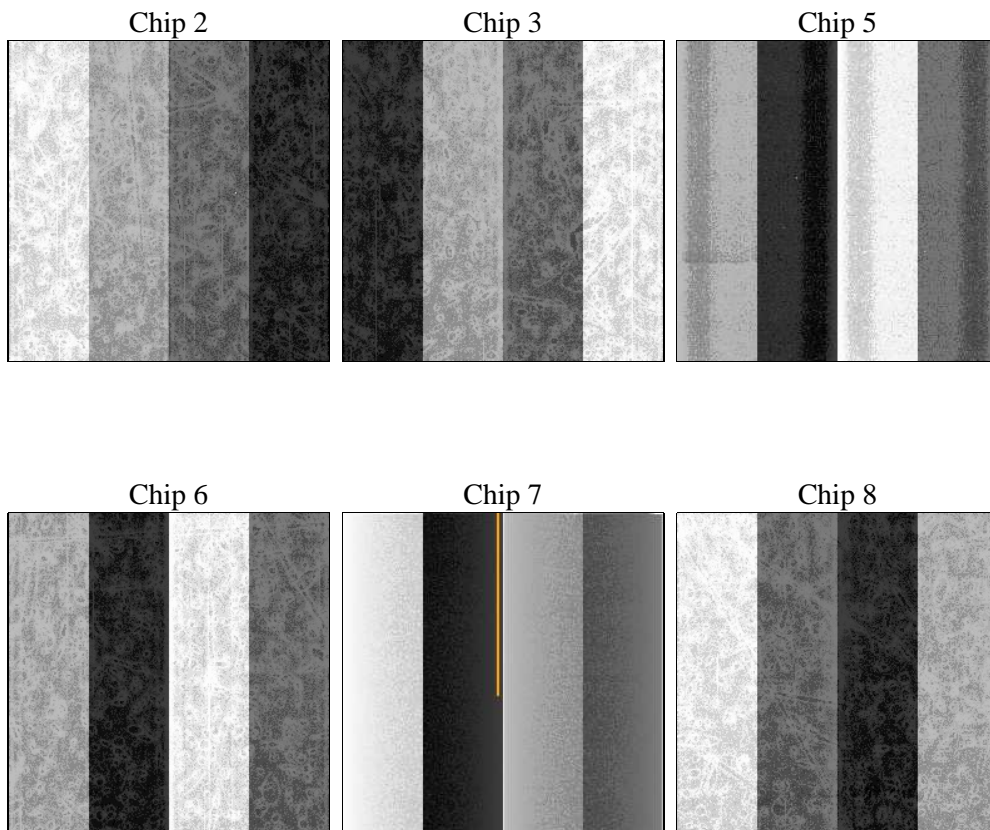
## 2 OBI

### 2.1 OBI

#### 2.1.1 Images



#### 2.1.2 Bias



### 2.1.3 Parameters

obi_num	0	Obi number	sched_exp_time	15160.880000	[s] Scheduled observation exposure time
ascdsver	8.5.1	Processing system revision	ontime	15116.799943686	Sum of GTIs [s]
caldbver	4.5.5	&#160	ontime2	15116.799943686	Sum of GTIs [s]
date	2012-12-15T05:18:55	Date and time of file creation	ontime3	15116.799943686	Sum of GTIs [s]
revision	3	Processing version of data	ontime5	15116.799943686	Sum of GTIs [s]
			ontime6	15113.558983415	Sum of GTIs [s]
			ontime7	15116.799943686	Sum of GTIs [s]
			ontime8	15113.558973402	Sum of GTIs [s]
			l1events	850460	Number of level 1 events

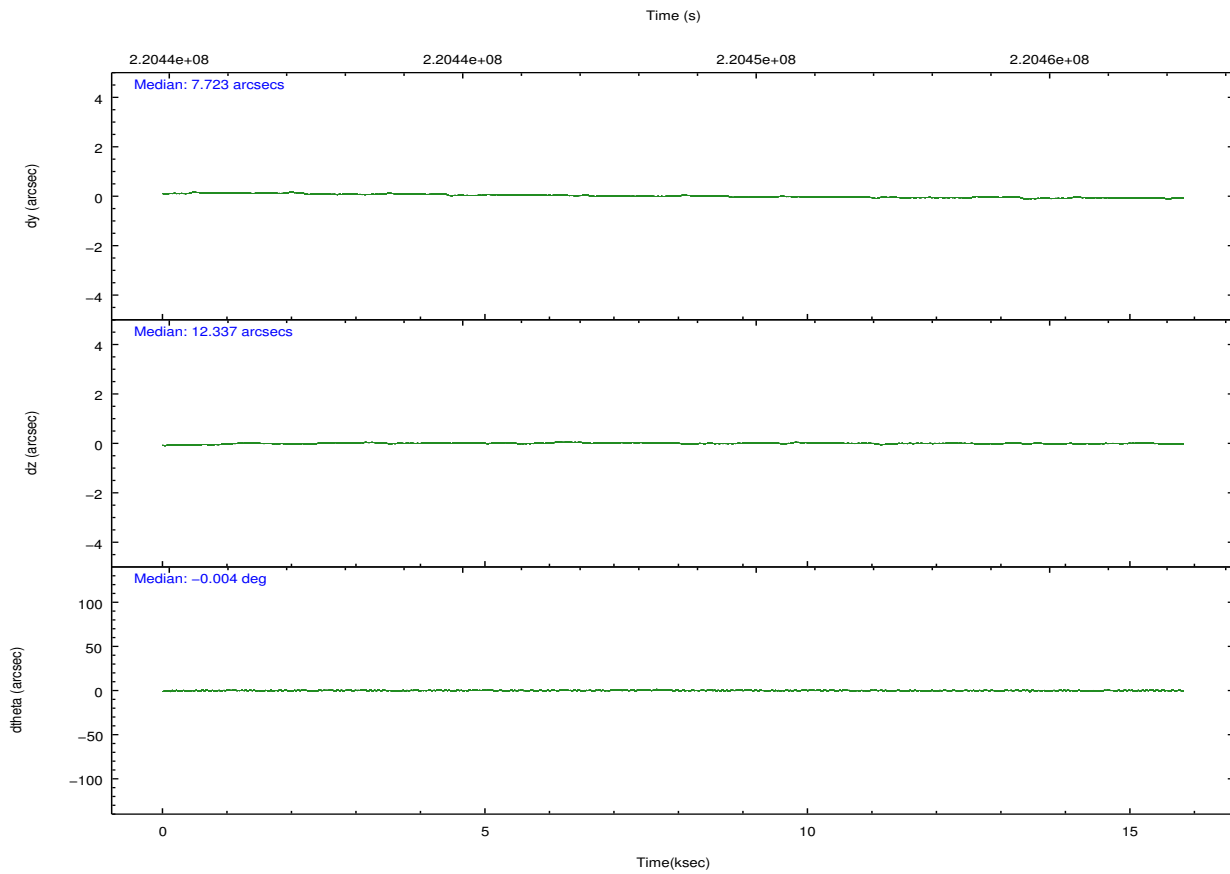
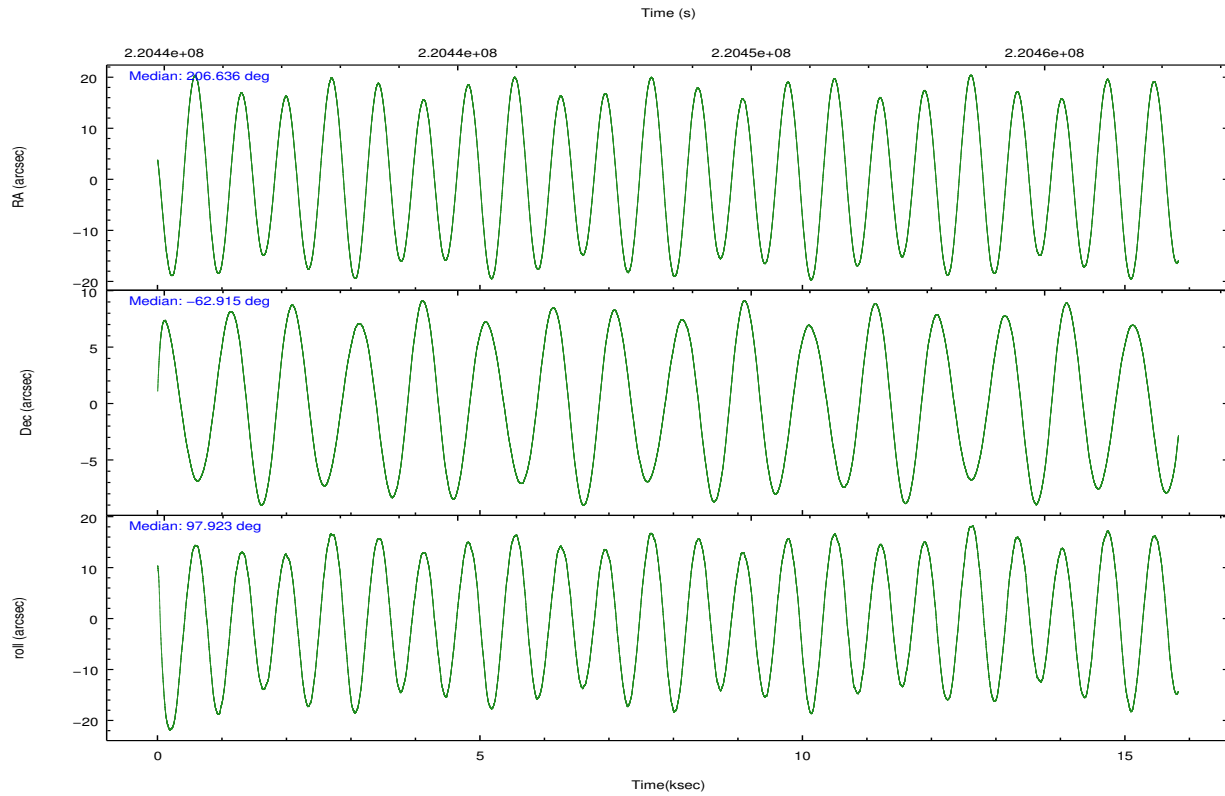
### 2.1.4 Events

	ccd 2	ccd 3	ccd 5	ccd 6	ccd 7	ccd 8		ccd 2	ccd 3	ccd 5	ccd 6	ccd 7	ccd 8
level 1 events	119525	113403	186765	121268	163505	145994	grade 0 events	6401	6166	17086	8938	7003	10171
rejected events	105405	99570	95133	103264	92518	114159		5%	5%	9%	7%	4%	6%
rejected %	88%	87%	50%	85%	56%	78%	grade 1 events	88	83	613	78	187	84
								0%	0%	0%	0%	0%	0%
							grade 2 events	2865	2560	25816	3346	14456	6967
								2%	2%	13%	2%	8%	4%
							grade 3 events	1290	1343	3337	1541	6419	3316
								1%	1%	1%	1%	3%	2%
							grade 4 events	1255	1398	3130	1381	6457	3141
								1%	1%	1%	1%	3%	2%
							grade 5 events	4589	5160	13133	5403	15354	6902
								3%	4%	7%	4%	9%	4%
							grade 6 events	2319	2379	42305	2808	36673	8241
								1%	2%	22%	2%	22%	5%
							grade 7 events	100718	94314	81345	97773	76956	107172
								84%	83%	43%	80%	47%	73%

## 2.2 Compared Parameters

Parameter	Planned	Actual	Parameter	Planned	Actual
Instrument	ACIS	ACIS	Obspar format version number	7	7
Detector	ACIS-235678	ACIS-235678	Obspar file type	PREDICTED	ACTUAL
Grating	NONE	NONE	Obspar update status	NONE	UPDATED
Data mode	VFAINT	VFAINT	Number of optional ACIS chips dropped	0	0
Observation mode	POINTING	POINTING	On-chip summing requested	N	N
[deg] Pointing RA	206.672807	206.6353416713625	Subarray requested	NONE	NONE
[deg] Pointing Dec	-62.936579	-62.91533893477202	Alternating exposures requested	N	N
[deg] Pointing Roll	97.803384	97.92666382621725	[s] Primary exposure time	0.000000	3.2
[mm] SIM focus pos	-0.684267	-0.6828225247311905			
[mm] SIM defocus	0	0.001444936568705701			
[mm] SIM translation stage pos	-190.132523	-190.1425803651734			
[mm] SIM translation stage offset	0	0.01005778216563158			
[s] Observation start time (MET)	220441343.184000	220440141.12766			
Observation start date	2004-12-26T09:41:19	2004-12-26T09:22:21			
[s] Observation end time (MET)	220456503.184000	220456727.16591			
Observation end date	2004-12-26T13:53:59	2004-12-26T13:58:47			
Read mode	TIMED	TIMED			

## 2.3 Aspect

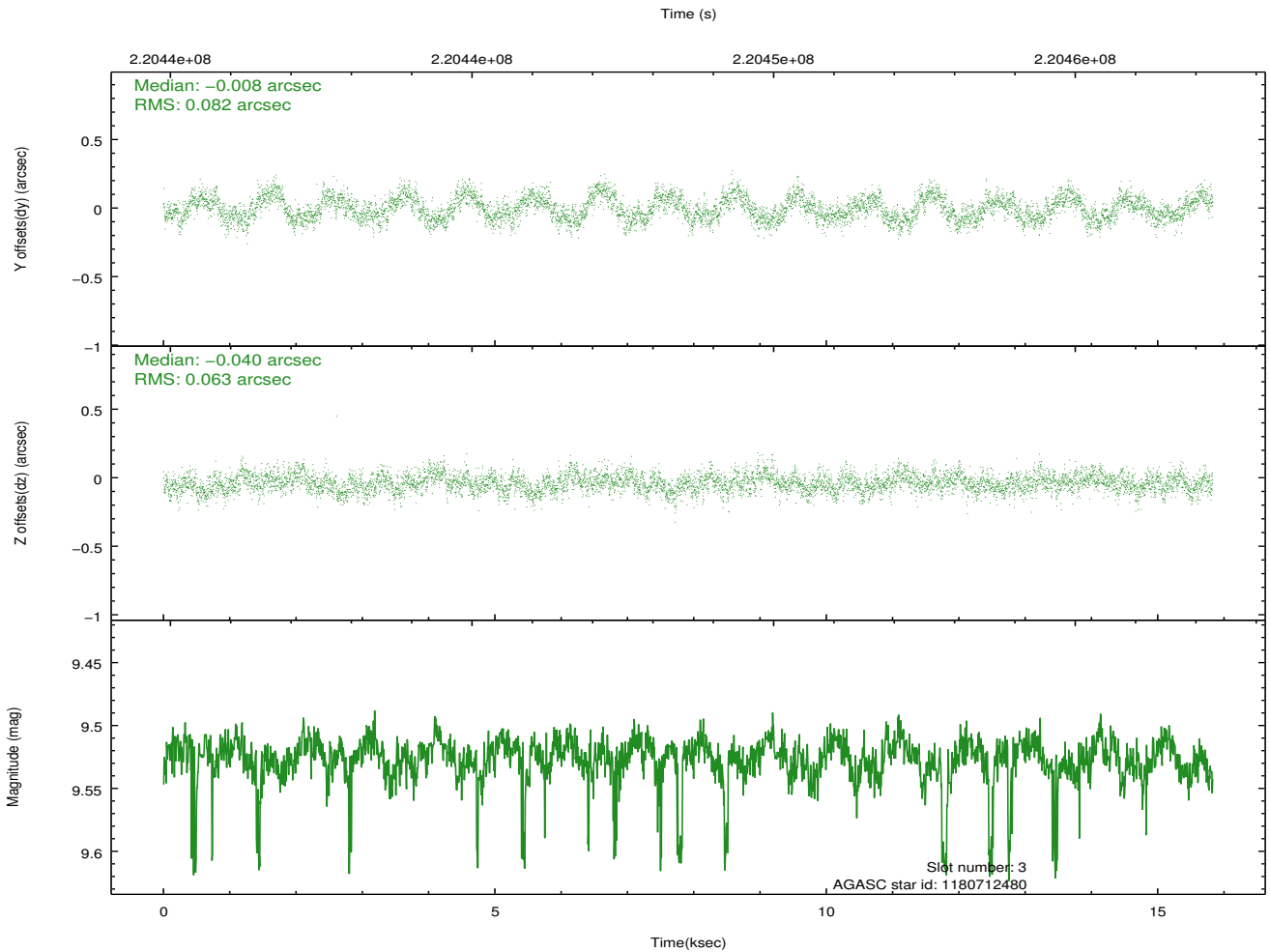
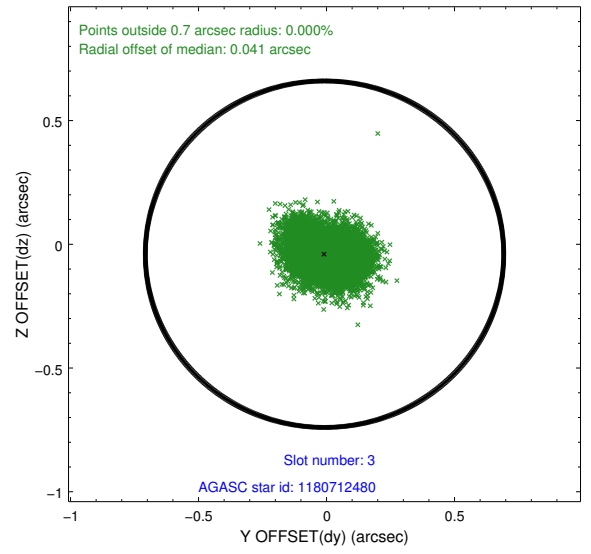
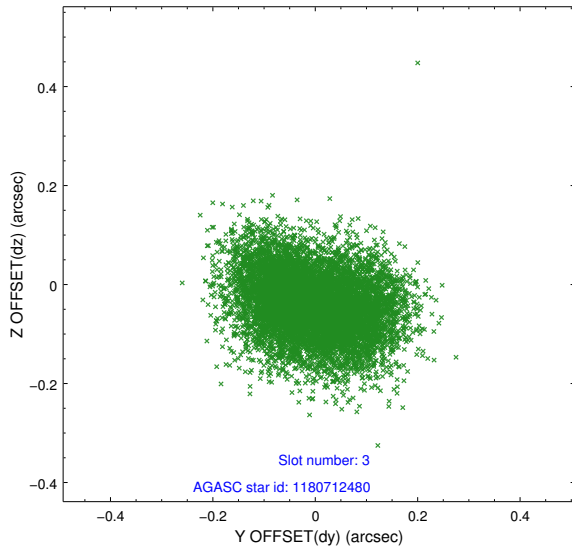


### Slot Statistics

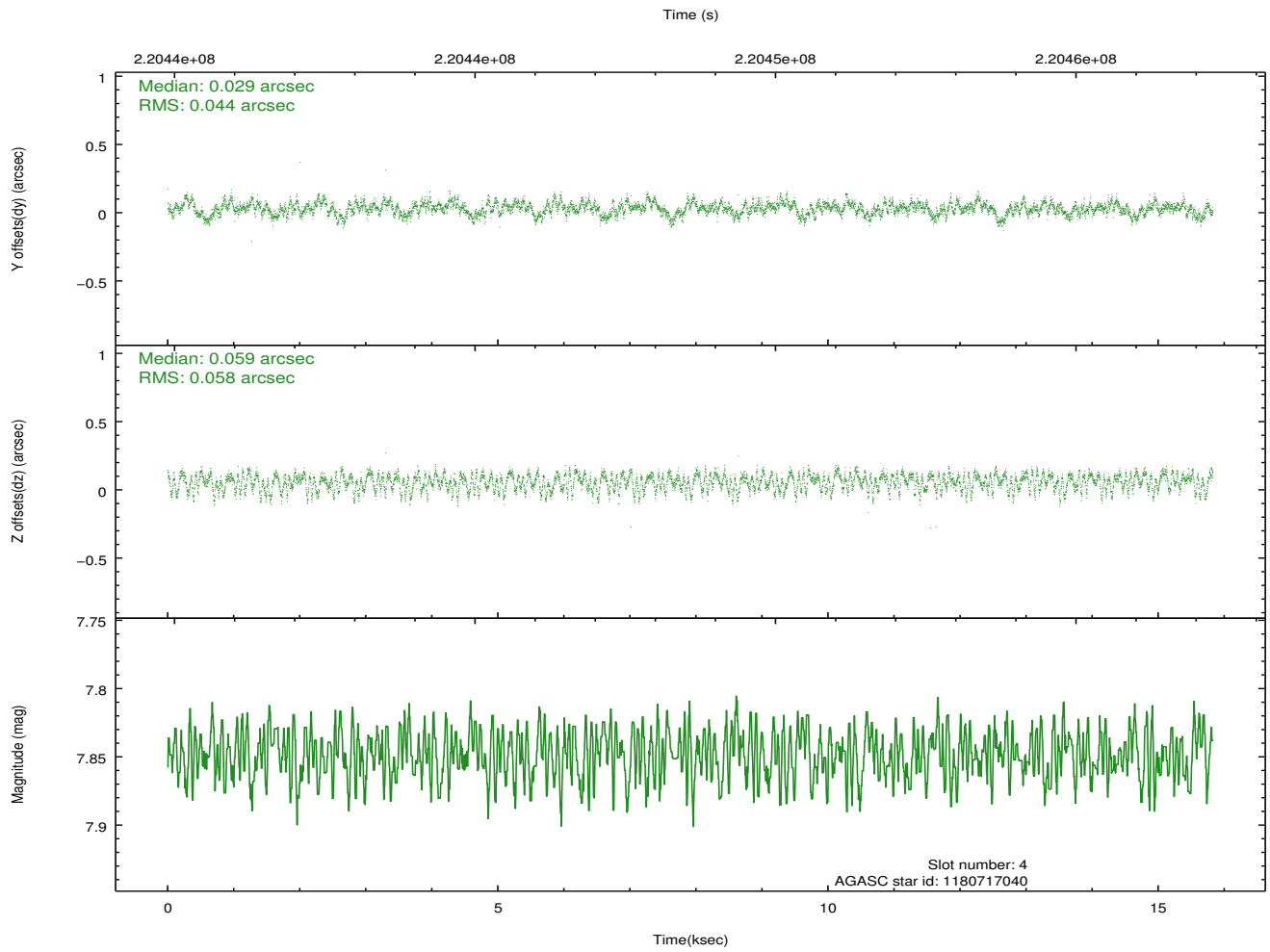
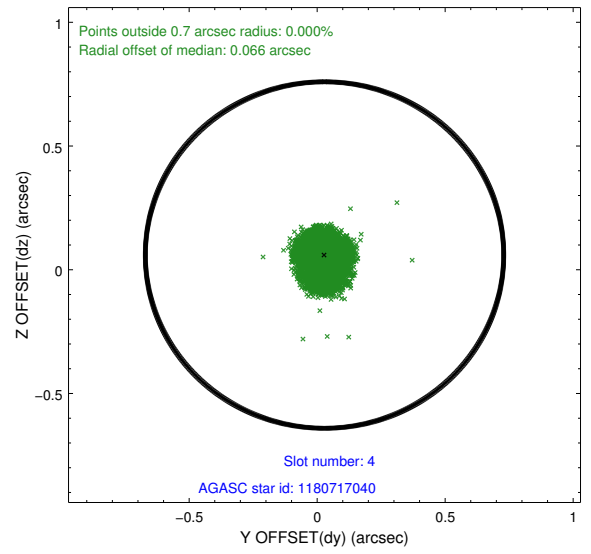
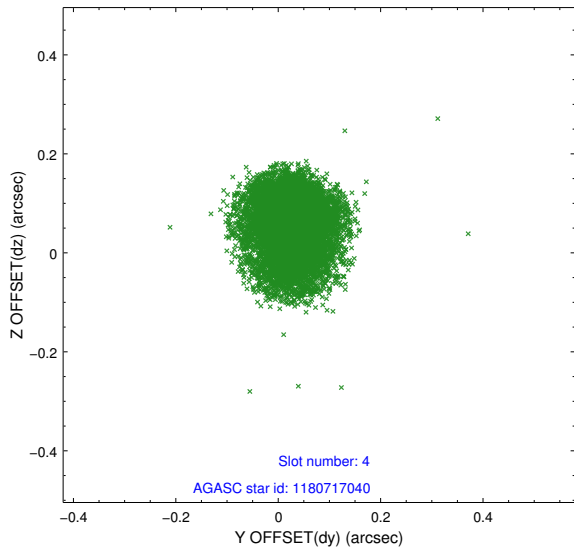
slot	status	id	mag	n_pts	med_dy	med_dz	dr1	dr2	ra	dec	mean_y	mean_z
0	FID	ACIS-S-2	7.10	3861	-0.010	-0.033	0.006	0.010	0.000000	0.000000	-760.52	-1733.62
1	FID	ACIS-S-4	7.20	3859	0.079	0.014	0.006	0.012	0.000000	0.000000	2152.72	174.61
2	FID	ACIS-S-5	7.23	3861	-0.101	0.028	0.008	0.013	0.000000	0.000000	-1813.09	168.62
3	GUIDE	1180712480	9.53	7701	-0.008	-0.040	0.111	0.177	206.355056	-63.162303	-735.97	622.34
4	GUIDE	1180717040	7.85	7717	0.029	0.059	0.078	0.123	208.136771	-63.356115	-1843.61	-2132.38
5	GUIDE	1180724504	9.32	7719	-0.157	-0.058	0.086	0.141	205.862671	-62.438910	1949.69	1094.90
6	GUIDE	1180728632	9.36	7716	0.044	-0.049	0.095	0.157	205.841489	-63.568252	-2080.17	1630.02
7	GUIDE	1180731272	9.19	7718	0.086	0.096	0.073	0.120	207.870815	-63.500080	-2288.69	-1628.24

## 2.4 Star Slots

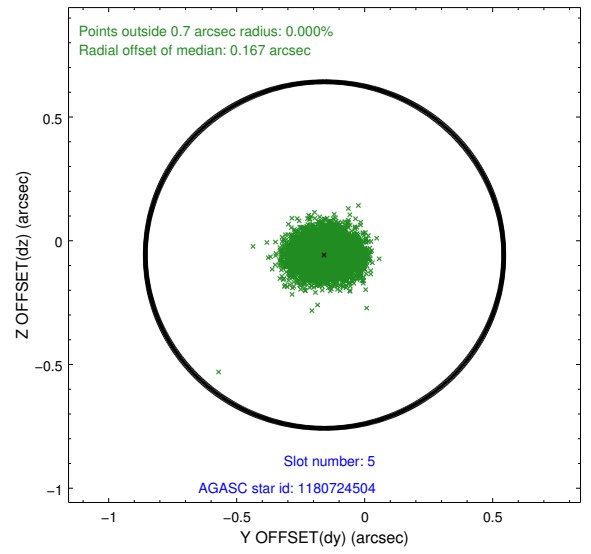
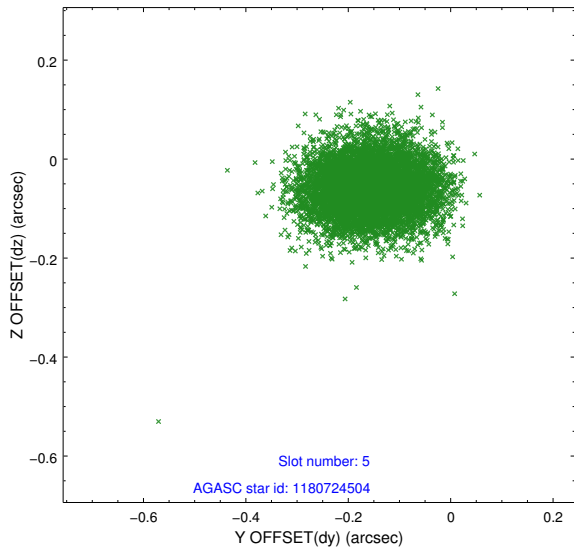
### 2.4.1 Slot 3



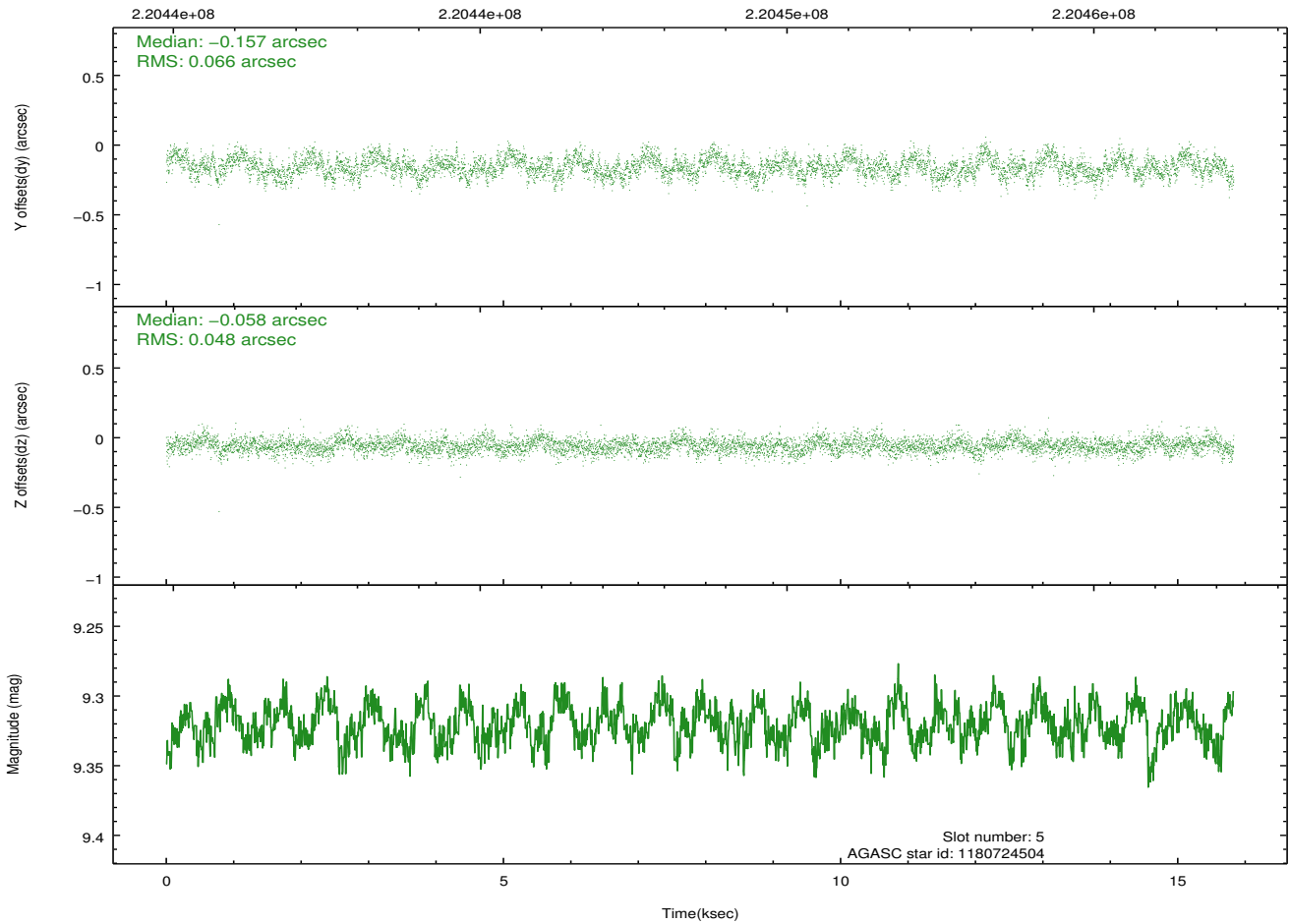
### 2.4.2 Slot 4



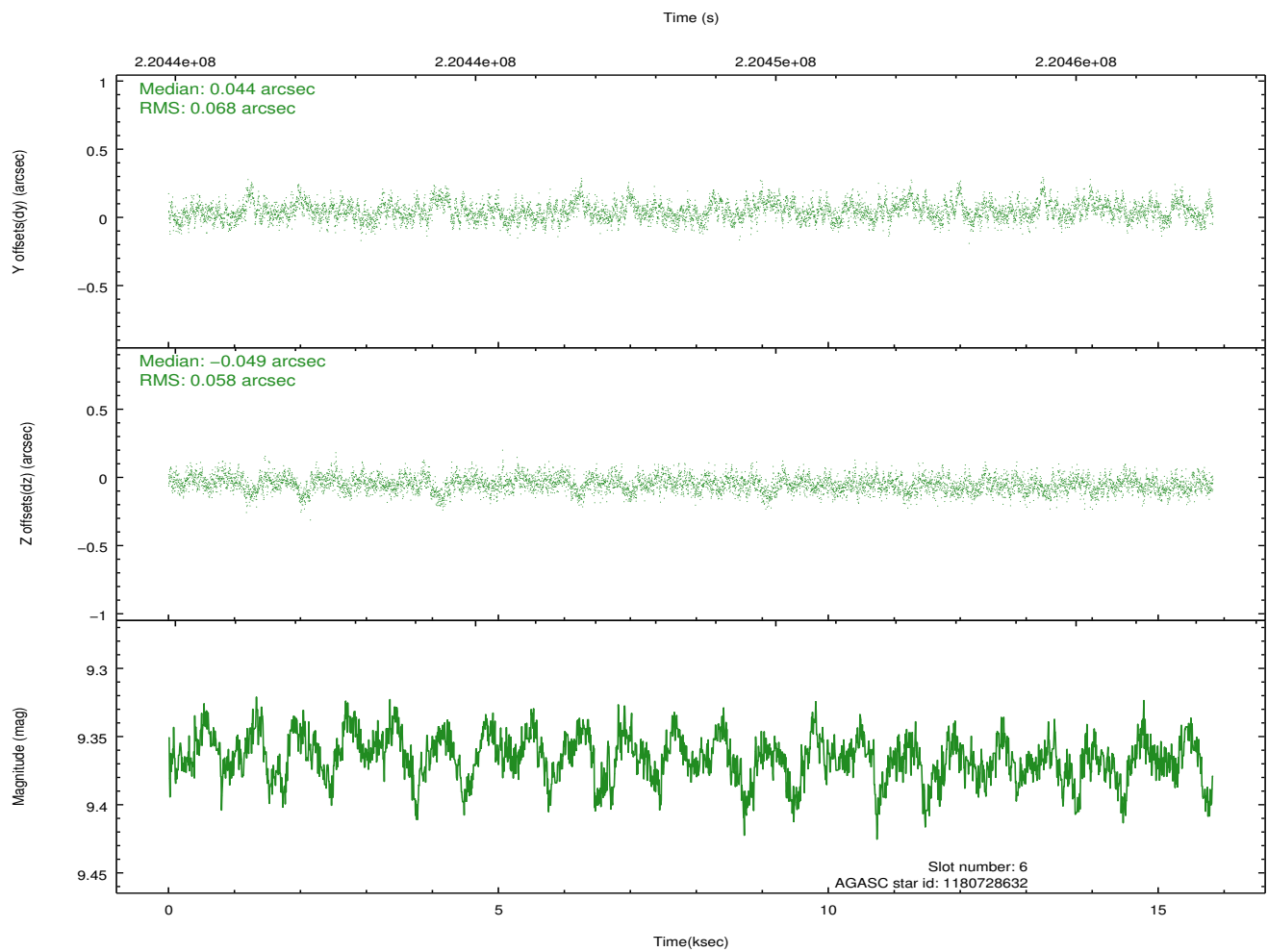
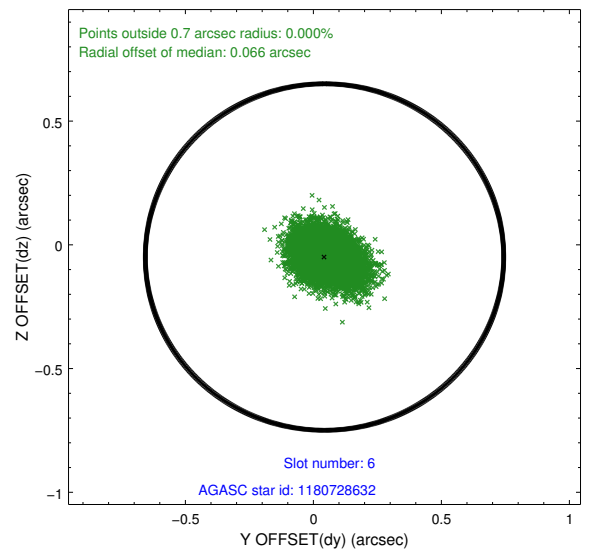
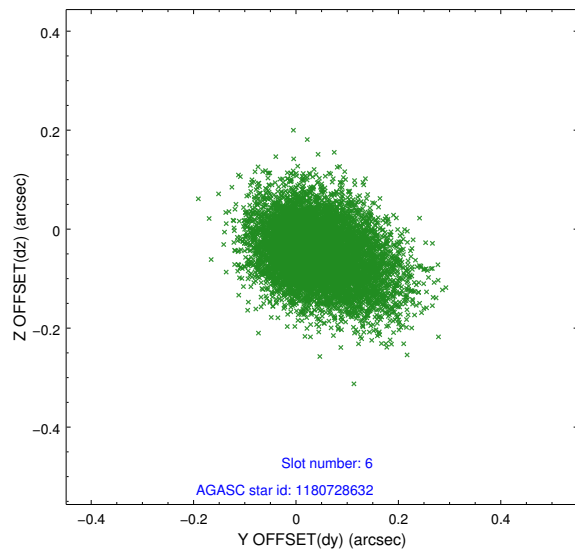
### 2.4.3 Slot 5



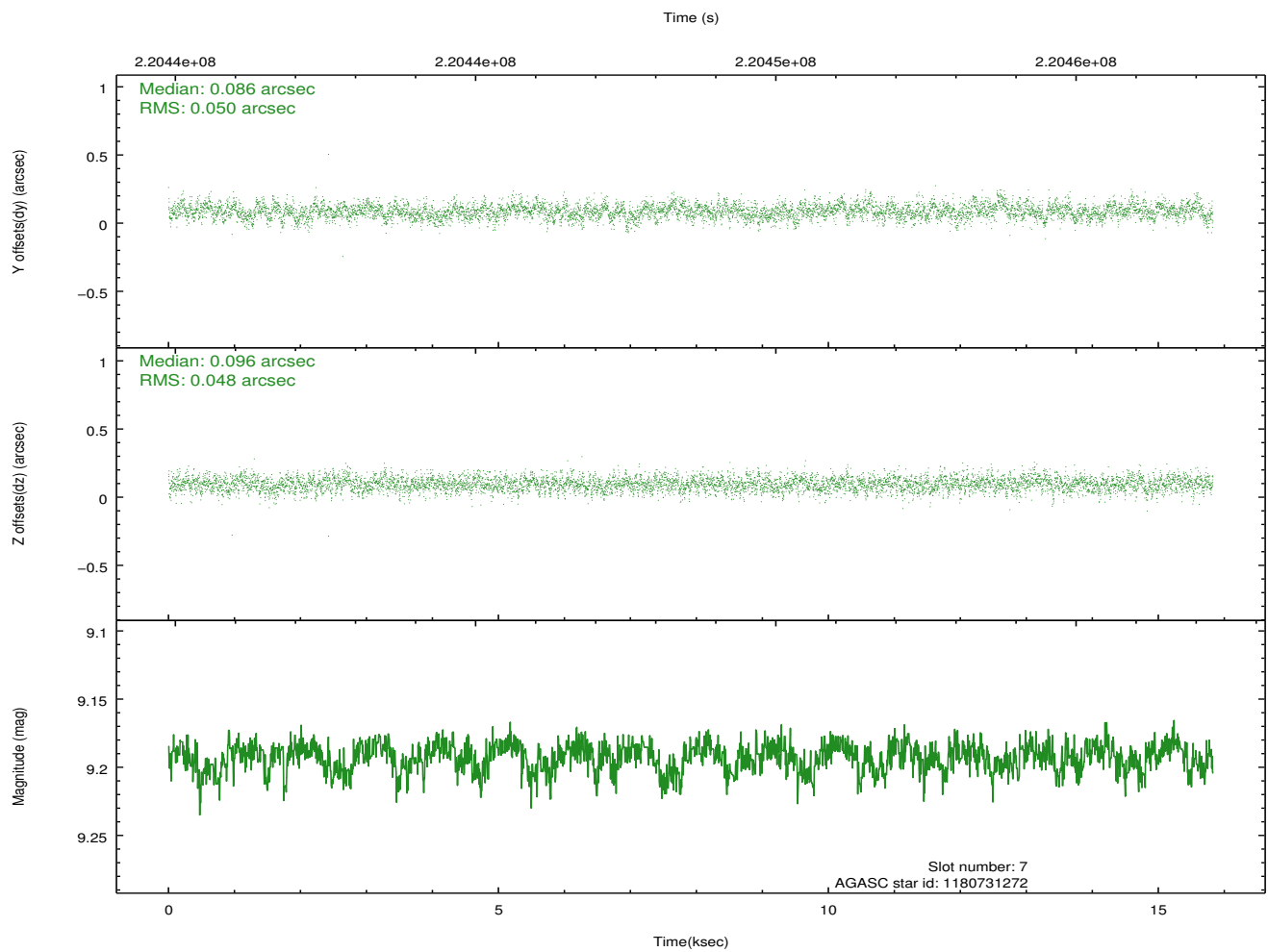
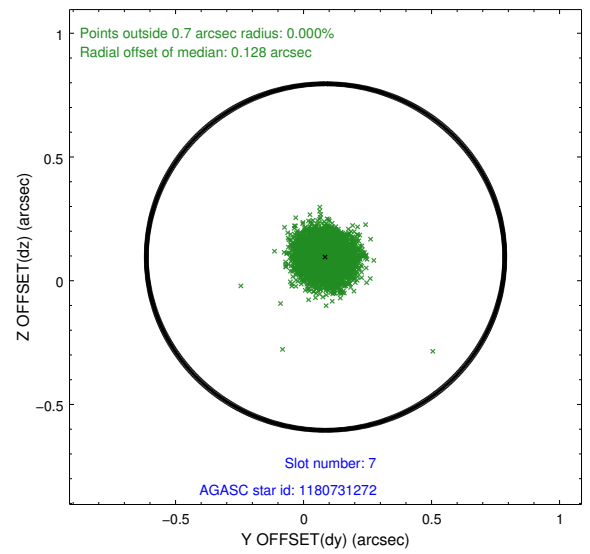
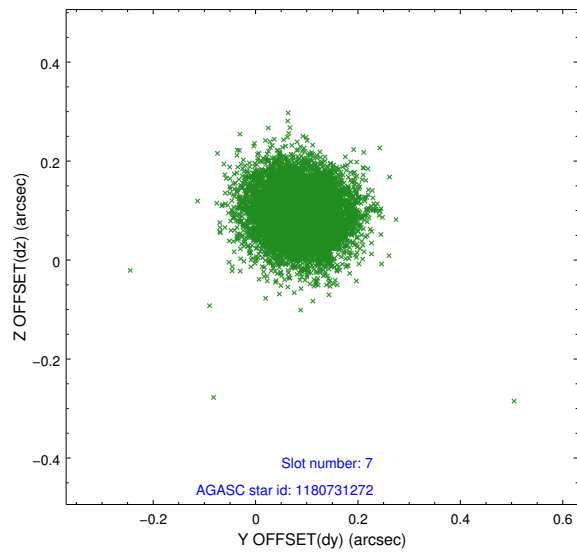
Time (s)



## 2.4.4 Slot 6

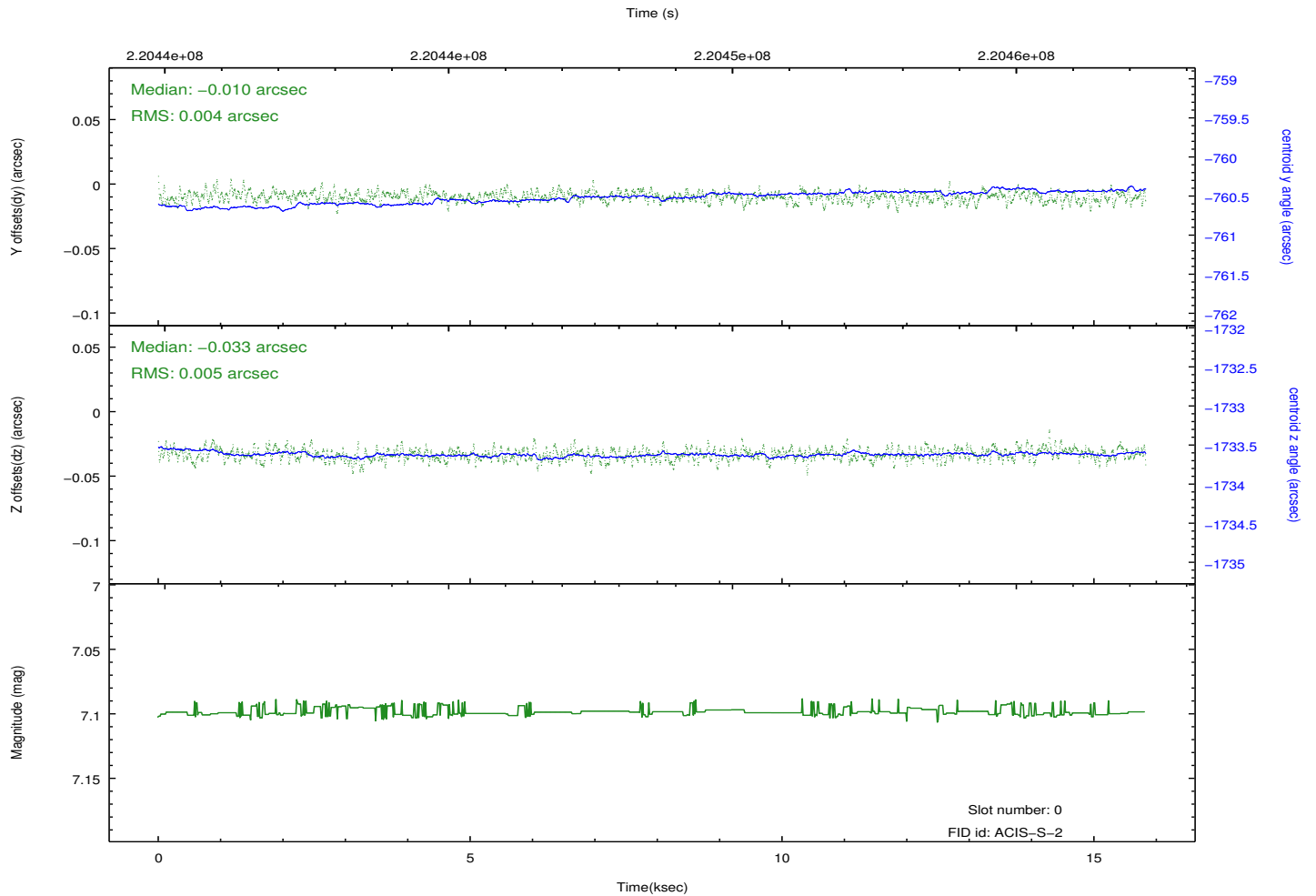
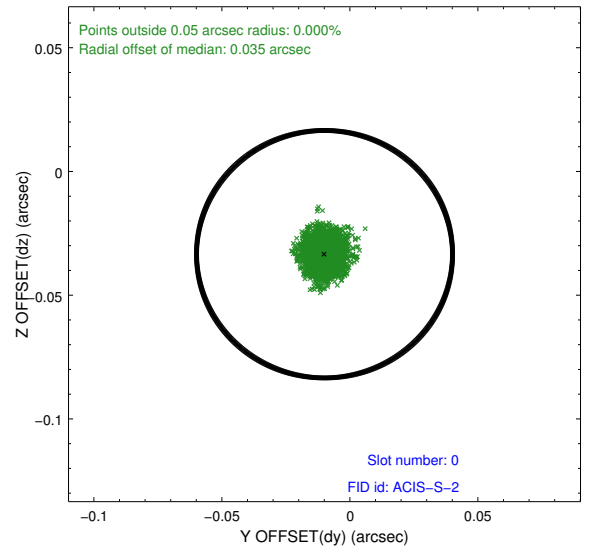
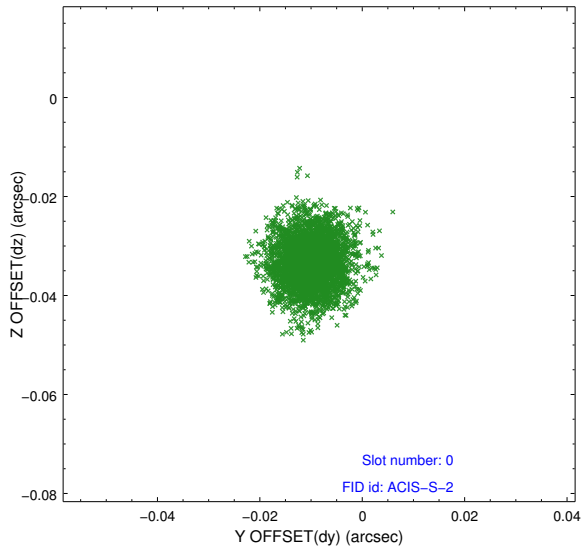


## 2.4.5 Slot 7

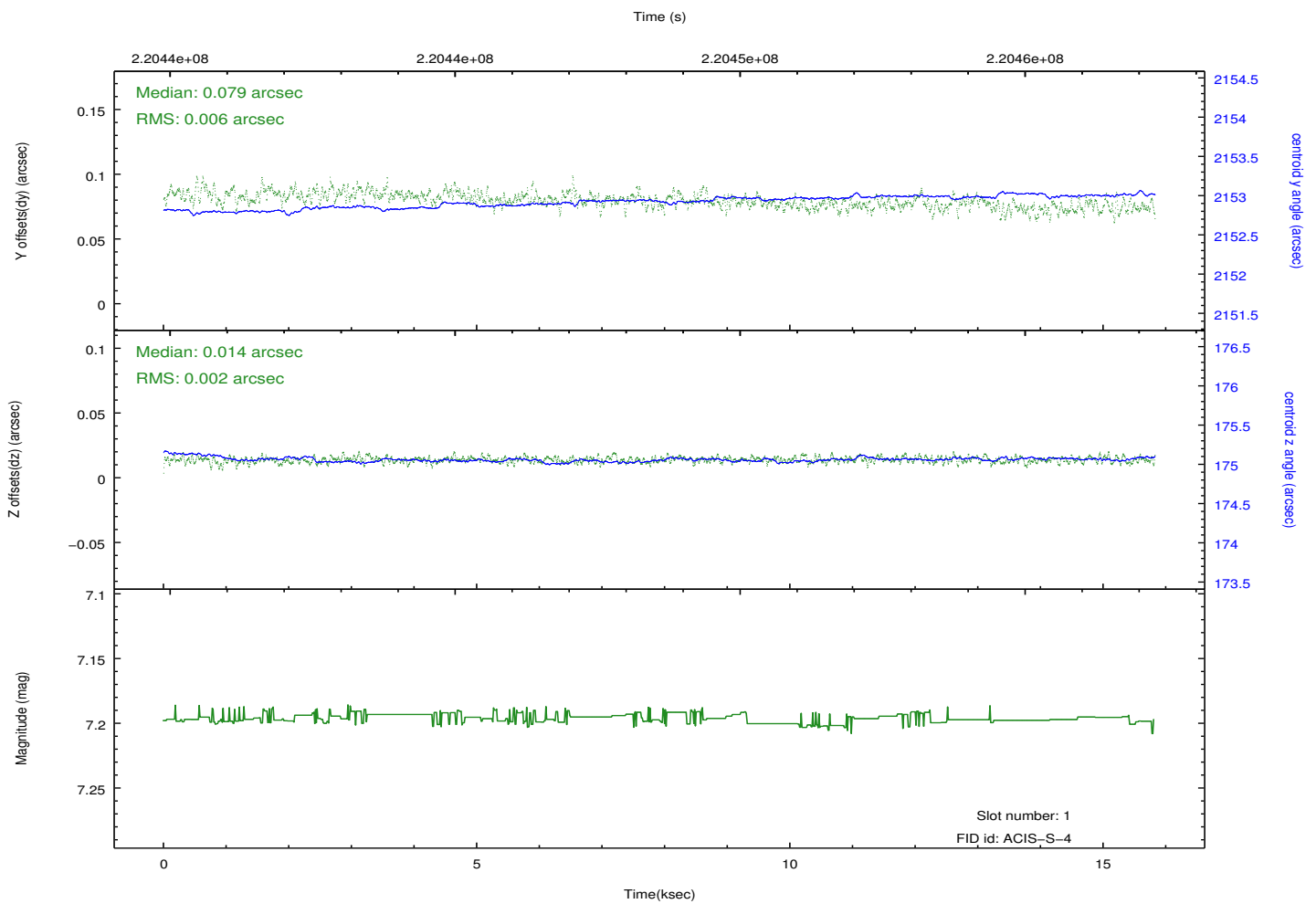
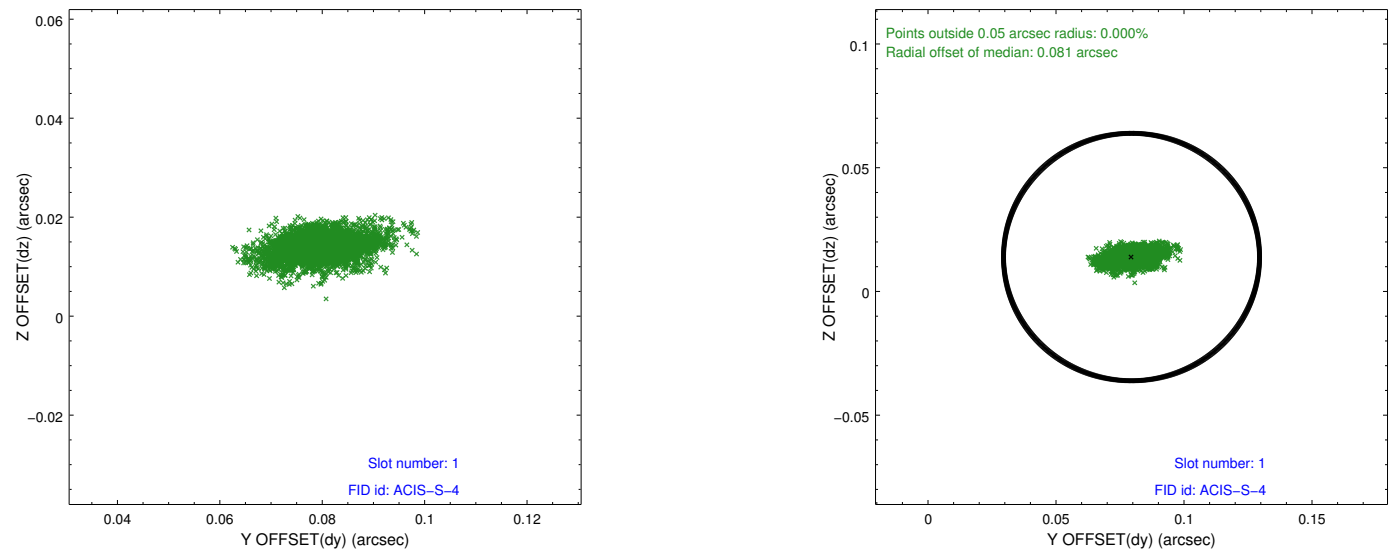


## 2.5 FID Slots

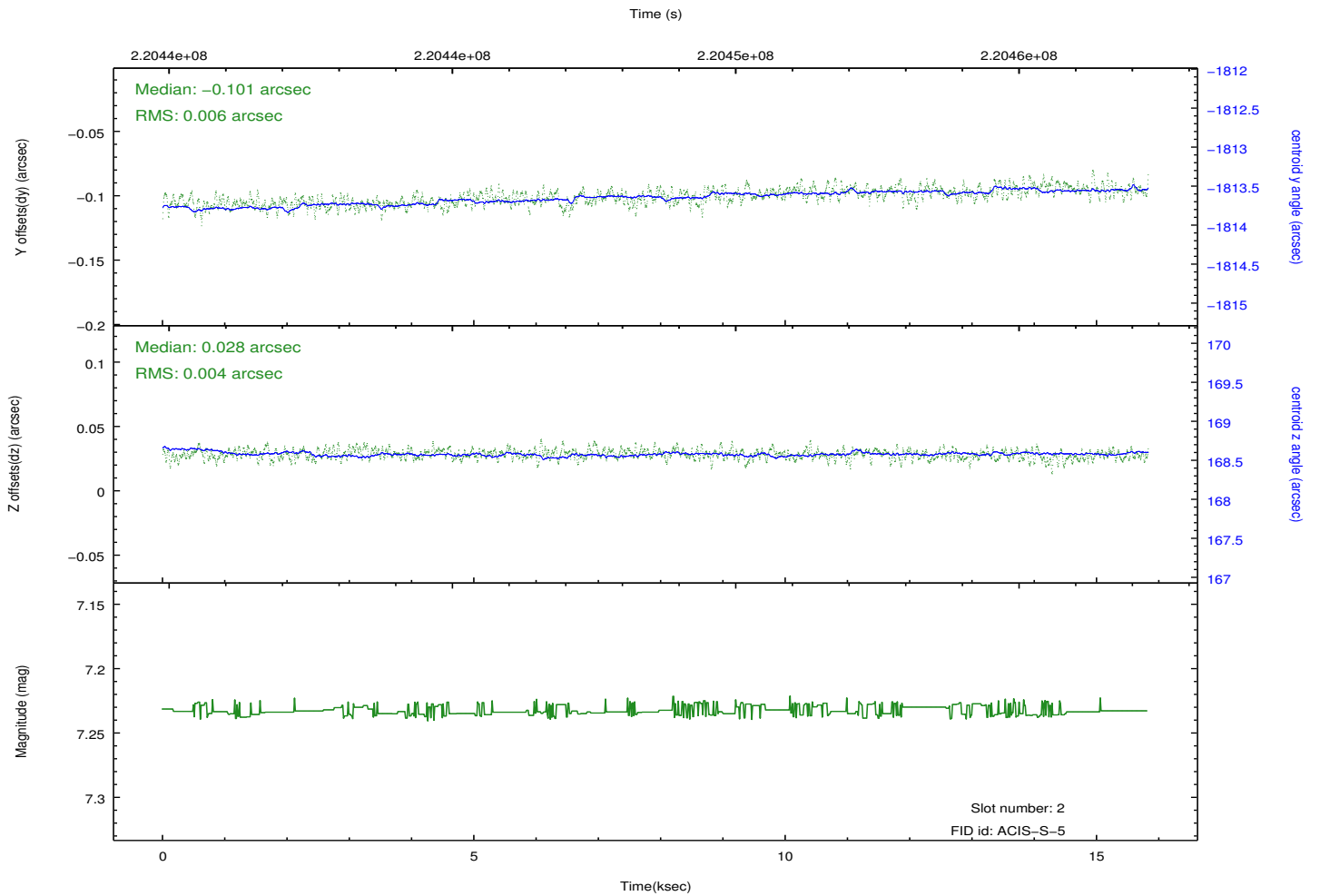
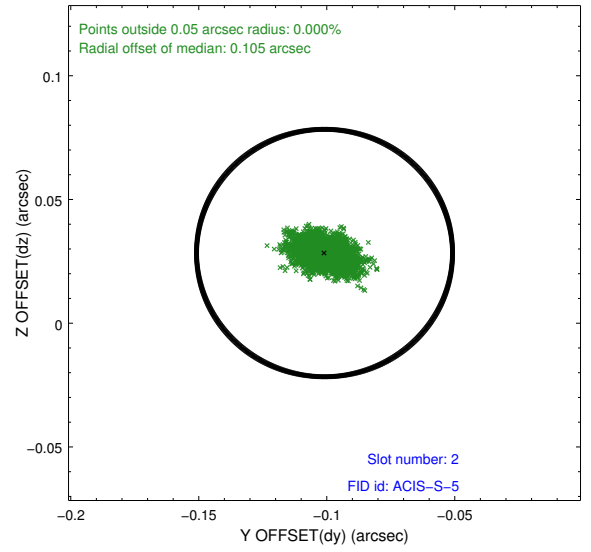
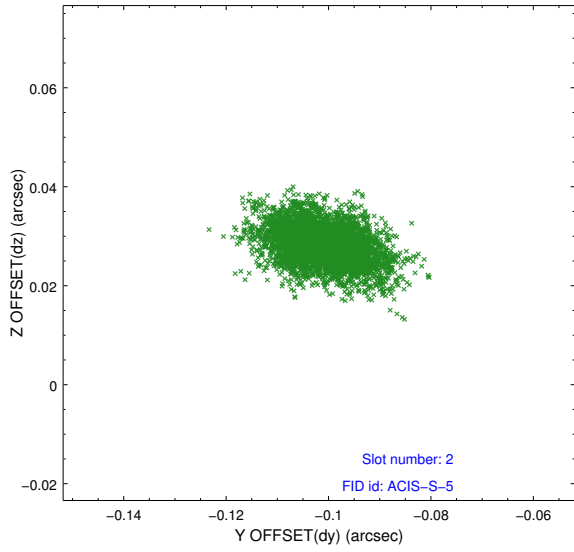
### 2.5.1 Slot 0



## 2.5.2 Slot 1



### 2.5.3 Slot 2



# A Summary

## A.1 Status

V&V Scientist	Beth Sundheim
V&V Date (YYYY-MM-DD)	2013.01.07
V&V Edition	1
V&V Disposition and Status	OK
V&V Charge Time	15.11679

## A.2 Comments