

V&V Reference Report

L2 ASCDS Version : 8.4.5

Observation 4734 - L2 Version 3
Chandra X-Ray Center

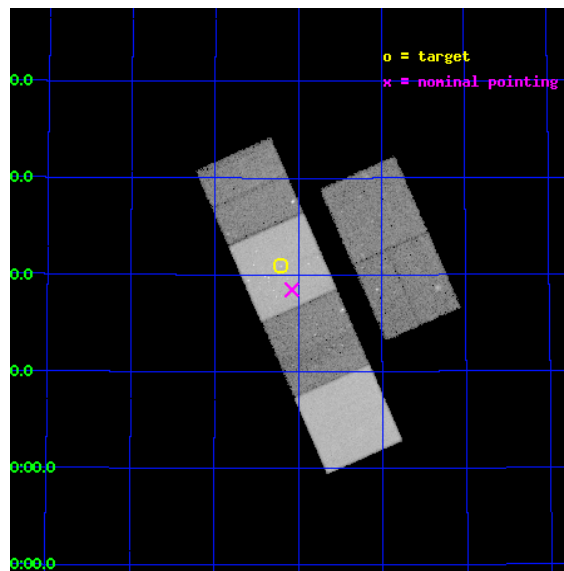
L2 Processing Date : Dec 3 2012

Contents

1	Front	2
2	OBI	3
2.1	OBI	3
2.1.1	Images	3
2.1.2	Bias	3
2.1.3	Parameters	4
2.1.4	Events	4
2.2	Compared Parameters	5
2.3	Aspect	6
2.4	Star Slots	9
2.4.1	Slot 3	9
2.4.2	Slot 4	10
2.4.3	Slot 5	11
2.4.4	Slot 6	12
2.4.5	Slot 7	13
2.5	FID Slots	14
2.5.1	Slot 0	14
2.5.2	Slot 1	15
2.5.3	Slot 2	16
A	Summary	17
A.1	Status	17
A.2	Comments	17

1 Front

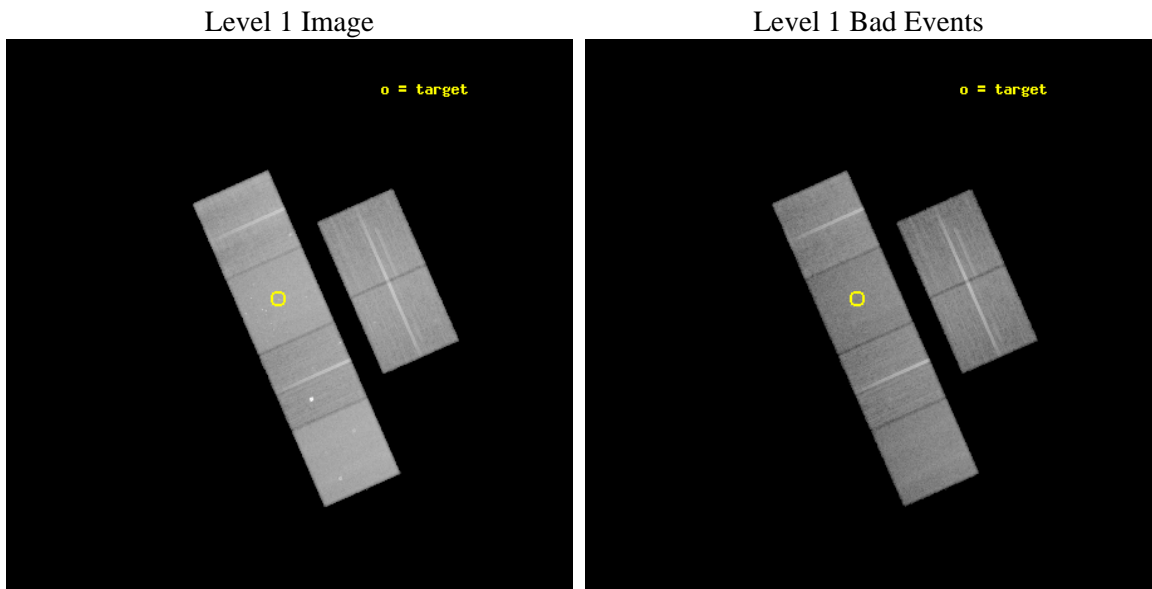
seq_num	600389	Sequence number
obs_id	4734	Observation id
title	An Ultra-Deep Study of M101	Proposal title
observer	Dr. K.D. Kuntz	Principal investigator
object	M101	Source name
dtcycle	0	
cycle	P	events from which exps? Prim/Second/Both
ra_targ	210.80375	Observer's specified target RA [deg]
dec_targ	54.348778	Observer's specified target Dec [deg]
ra_nom	210.76929233274	Nominal RA [deg]
dec_nom	54.307697896324	Nominal Dec [deg]
roll_nom	246.18462229133	Nominal Roll [deg]
revision	3	Processing version of data
ontime	35932.79986614	Sum of GTIs [s]
livetime	35477.7971181	Livetime [s]
ontime2	35929.55890587	Sum of GTIs [s]
ontime3	35929.55890584	Sum of GTIs [s]
ontime5	35932.79986614	Sum of GTIs [s]
ontime6	35932.79986614	Sum of GTIs [s]
ontime7	35932.79986614	Sum of GTIs [s]
ontime8	35926.31799531	Sum of GTIs [s]
l2events	440243	Number of level 2 events



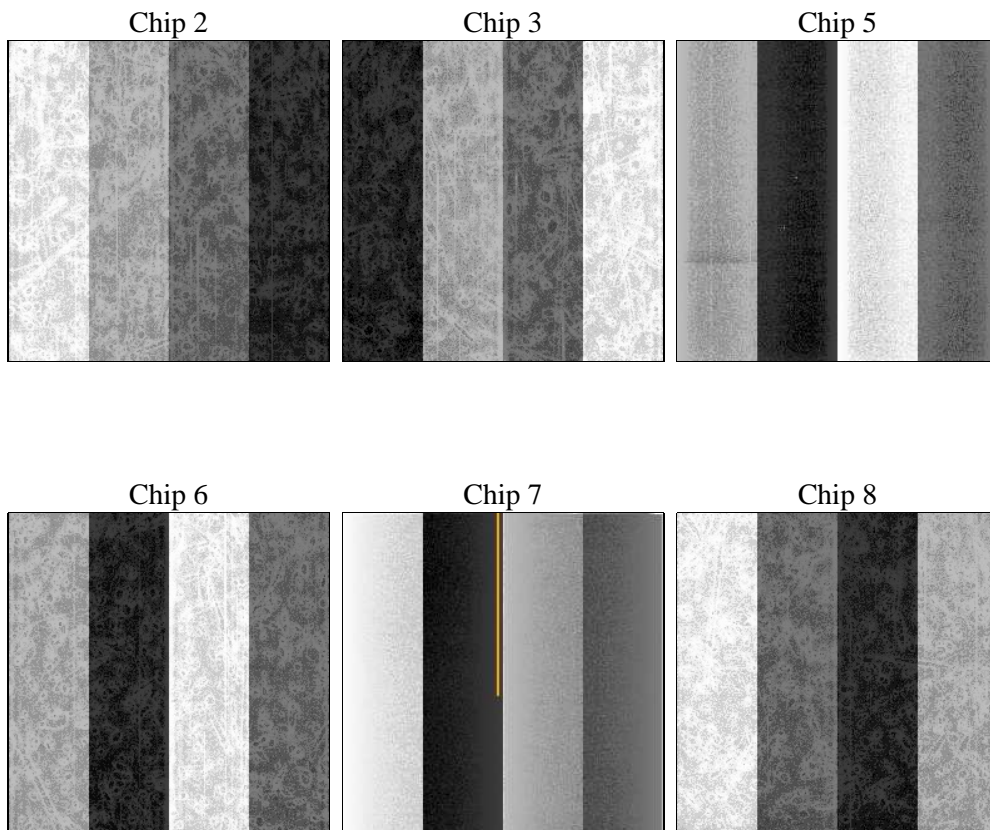
2 OBI

2.1 OBI

2.1.1 Images



2.1.2 Bias



2.1.3 Parameters

obi_num	1	Obi number	sched_exp_time	35810.000000	[s] Scheduled observation exposure time
ascdsver	8.4.5	Processing system revision	ontime	35932.79986614	Sum of GTIs [s]
caldbver	4.5.2	 	ontime2	35929.55890587	Sum of GTIs [s]
date	2012-12-03T21:56:44	Date and time of file creation	ontime3	35929.55890584	Sum of GTIs [s]
revision	3	Processing version of data	ontime5	35932.79986614	Sum of GTIs [s]
			ontime6	35932.79986614	Sum of GTIs [s]
			ontime7	35932.79986614	Sum of GTIs [s]
			ontime8	35926.31799531	Sum of GTIs [s]
			l1events	1946689	Number of level 1 events

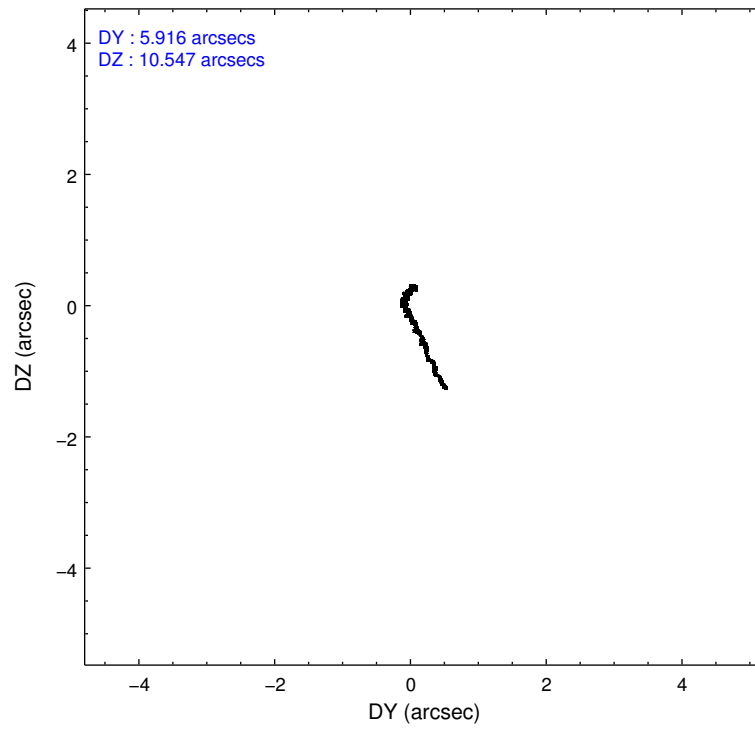
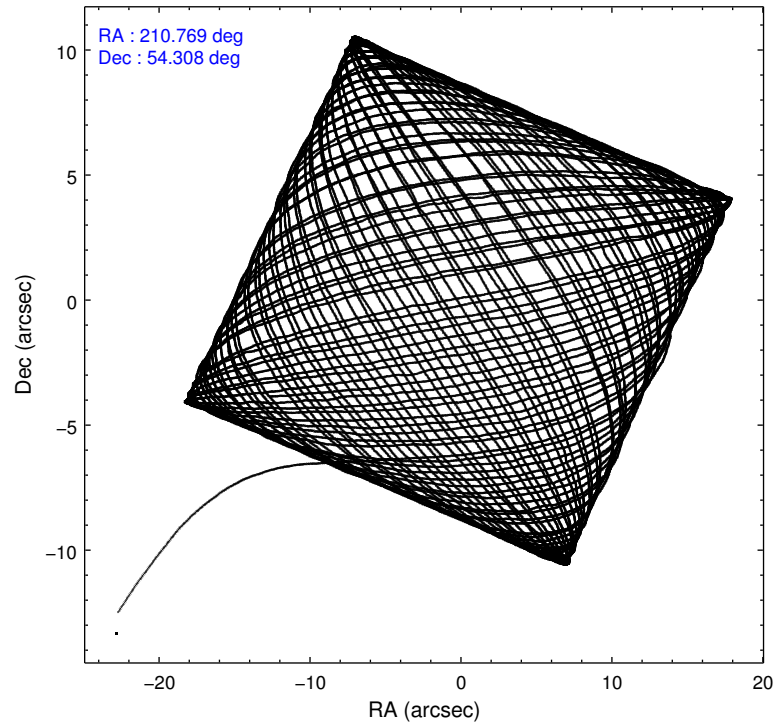
2.1.4 Events

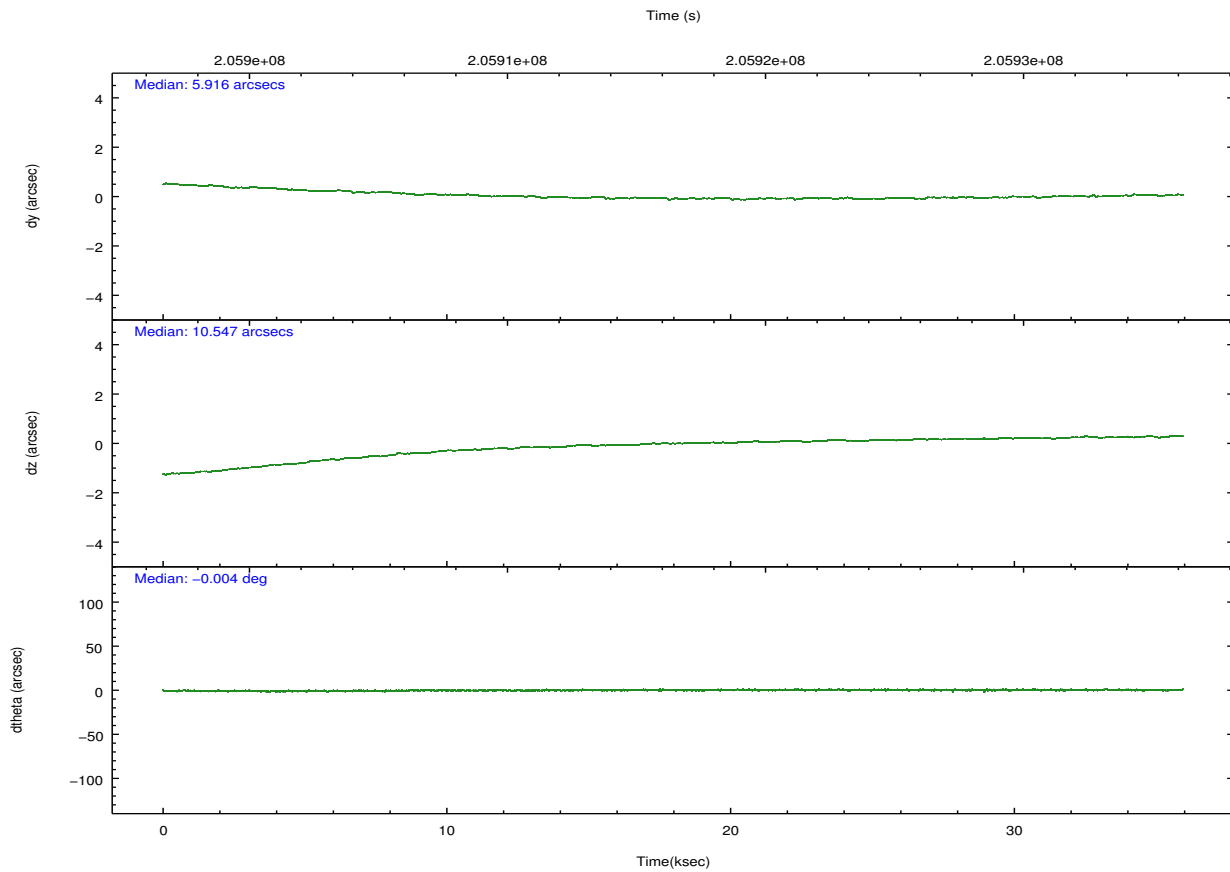
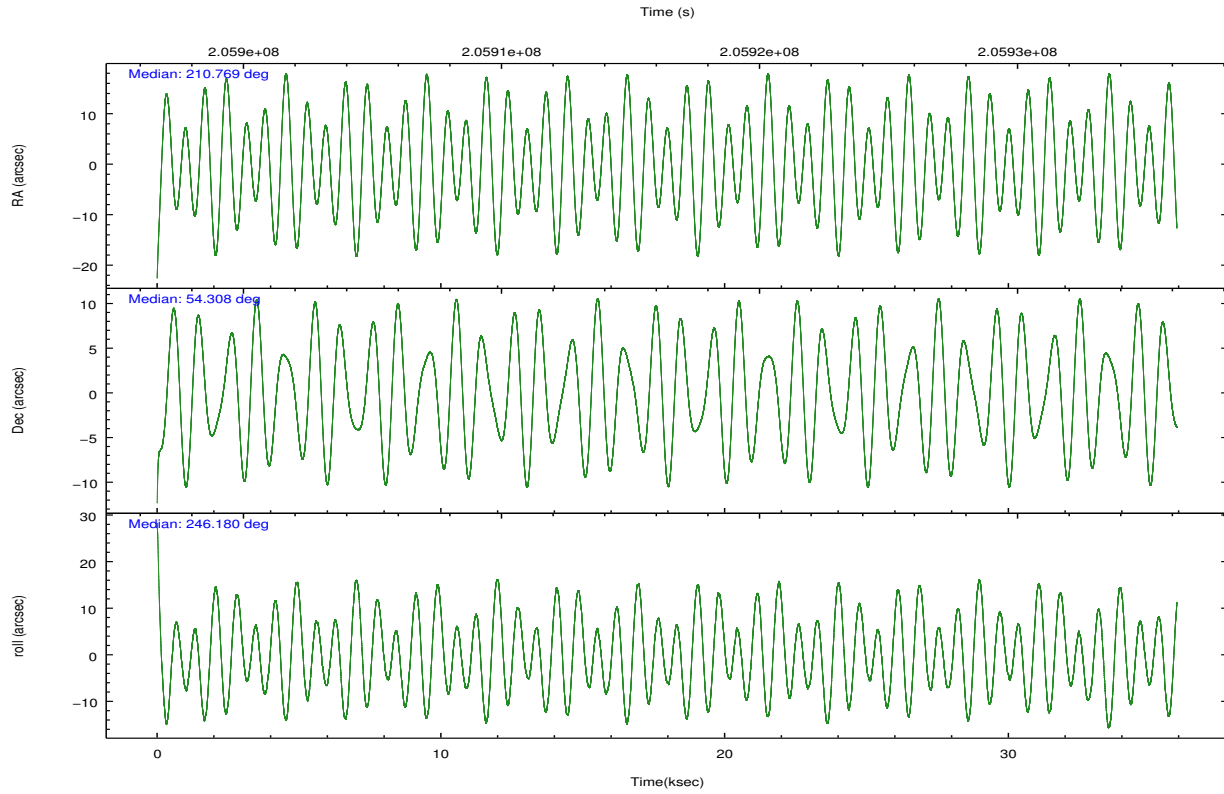
	ccd 2	ccd 3	ccd 5	ccd 6	ccd 7	ccd 8		ccd 2	ccd 3	ccd 5	ccd 6	ccd 7	ccd 8
level 1 events	278097	261555	398440	289166	372667	346764	grade 0 events	14403	13457	12222	24349	16047	23809
rejected events	246265	230777	221802	245503	216142	273542		5%	5%	3%	8%	4%	6%
rejected %	88%	88%	55%	84%	57%	78%	grade 1 events	183	156	543	173	335	238
								0%	0%	0%	0%	0%	0%
							grade 2 events	6493	5839	54115	6892	31467	16027
								2%	2%	13%	2%	8%	4%
							grade 3 events	2983	3133	7032	3083	14309	7698
								1%	1%	1%	1%	3%	2%
							grade 4 events	2999	3007	6898	3146	13923	7404
								1%	1%	1%	1%	3%	2%
							grade 5 events	10762	11545	29294	12492	35055	16155
								3%	4%	7%	4%	9%	4%
							grade 6 events	5190	5559	97915	6507	81950	18924
								1%	2%	24%	2%	21%	5%
							grade 7 events	235084	218859	190421	232524	179581	256509
								84%	83%	47%	80%	48%	73%

2.2 Compared Parameters

Parameter	Planned	Actual	Parameter	Planned	Actual
Instrument	ACIS	ACIS	Obspar format version number	7	7
Detector	ACIS-235678	ACIS-235678	Obspar file type	PREDICTED	ACTUAL
Grating	NONE	NONE	Obspar update status	NONE	UPDATED
Data mode	VFAINT	VFAINT	Number of optional ACIS chips dropped	0	0
Observation mode	POINTING	POINTING	On-chip summing requested	N	N
[deg] Pointing RA	210.763621	210.769292332743	Subarray requested	NONE	NONE
[deg] Pointing Dec	54.334730	54.30769789632425	Alternating exposures requested	N	N
[deg] Pointing Roll	246.032598	246.1846222913276	[s] Primary exposure time	0.000000	3.2
[mm] SIM focus pos	-0.684267	-0.6828225247311905			
[mm] SIM defocus	0	0.001444936568705701			
[mm] SIM translation stage pos	-190.132523	-190.1400660498719			
[mm] SIM translation stage offset	0	0.00754346686406393			
[s] Observation start time (MET)	205898578.184000	205897398.45253			
Observation start date	2004-07-11T02:01:54	2004-07-11T01:43:18			
[s] Observation end time (MET)	205934388.184000	205935342.41671			
Observation end date	2004-07-11T11:58:44	2004-07-11T12:15:42			
Read mode	TIMED	TIMED			

2.3 Aspect





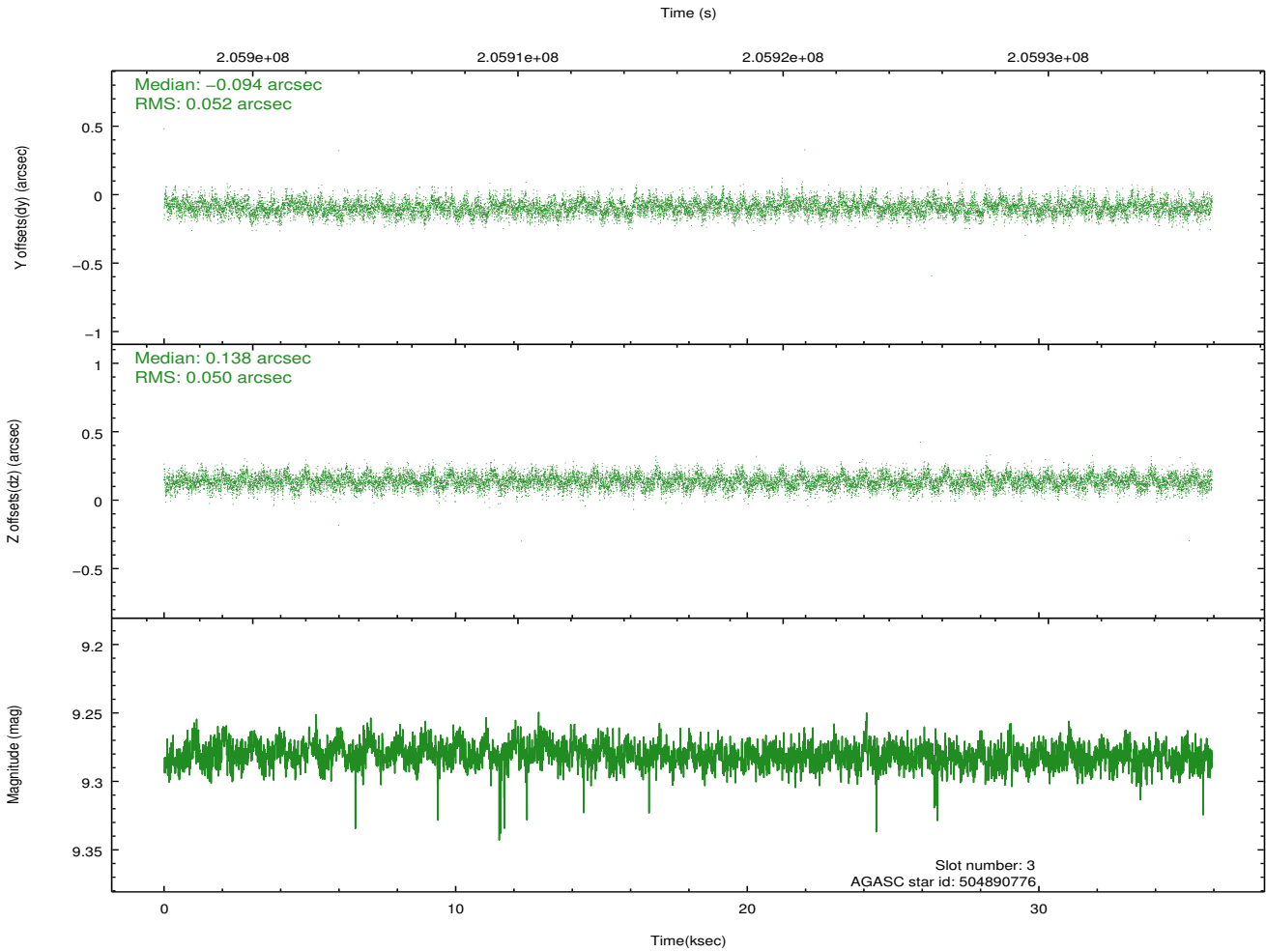
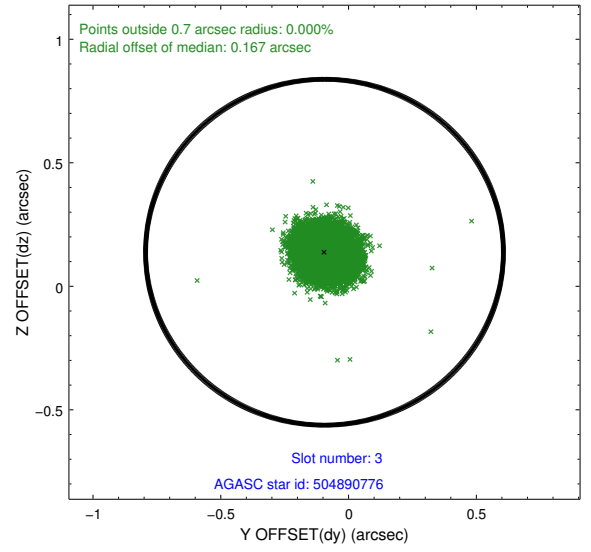
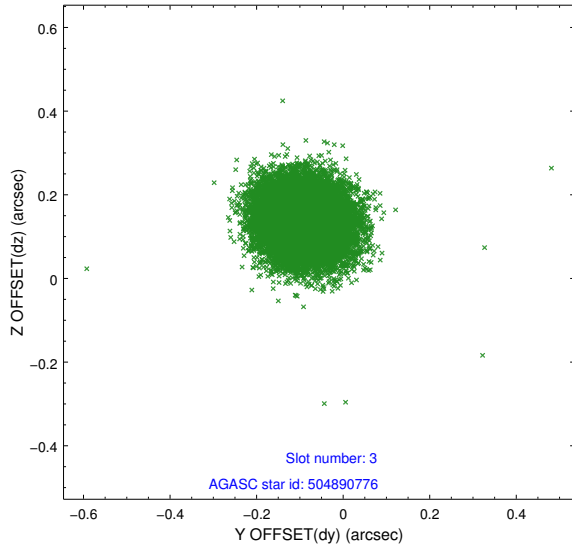
Slot Statistics

slot	status	id	mag	n_pts	med_dy	med_dz	dr1	dr2	ra	dec	mean_y	mean_z
0	FID	ACIS-S-2	7.10	8766	-0.083	-0.062	0.007	0.017	0.000000	0.000000	-758.77	-1731.70
1	FID	ACIS-S-4	7.21	8766	0.065	0.044	0.008	0.013	0.000000	0.000000	2154.63	176.86
2	FID	ACIS-S-6	7.35	8766	-0.010	0.026	0.008	0.018	0.000000	0.000000	403.32	814.27
3	GUIDE	504890776	9.28	17511	-0.094	0.138	0.076	0.124	211.095934	54.816966	-1867.49	-75.86
4	GUIDE	504891480	8.08	17529	-0.105	-0.071	0.063	0.098	210.708012	54.666096	-1042.77	-590.41
5	GUIDE	504893088	9.21	17520	0.058	-0.061	0.079	0.128	210.351715	54.364955	249.79	-834.60
6	GUIDE	504894856	8.98	17525	0.091	-0.081	0.086	0.139	209.819510	54.132689	1462.10	-1529.45
7	GUIDE	504890480	8.18	17527	0.051	0.075	0.072	0.112	210.132463	53.768436	2404.15	-401.36

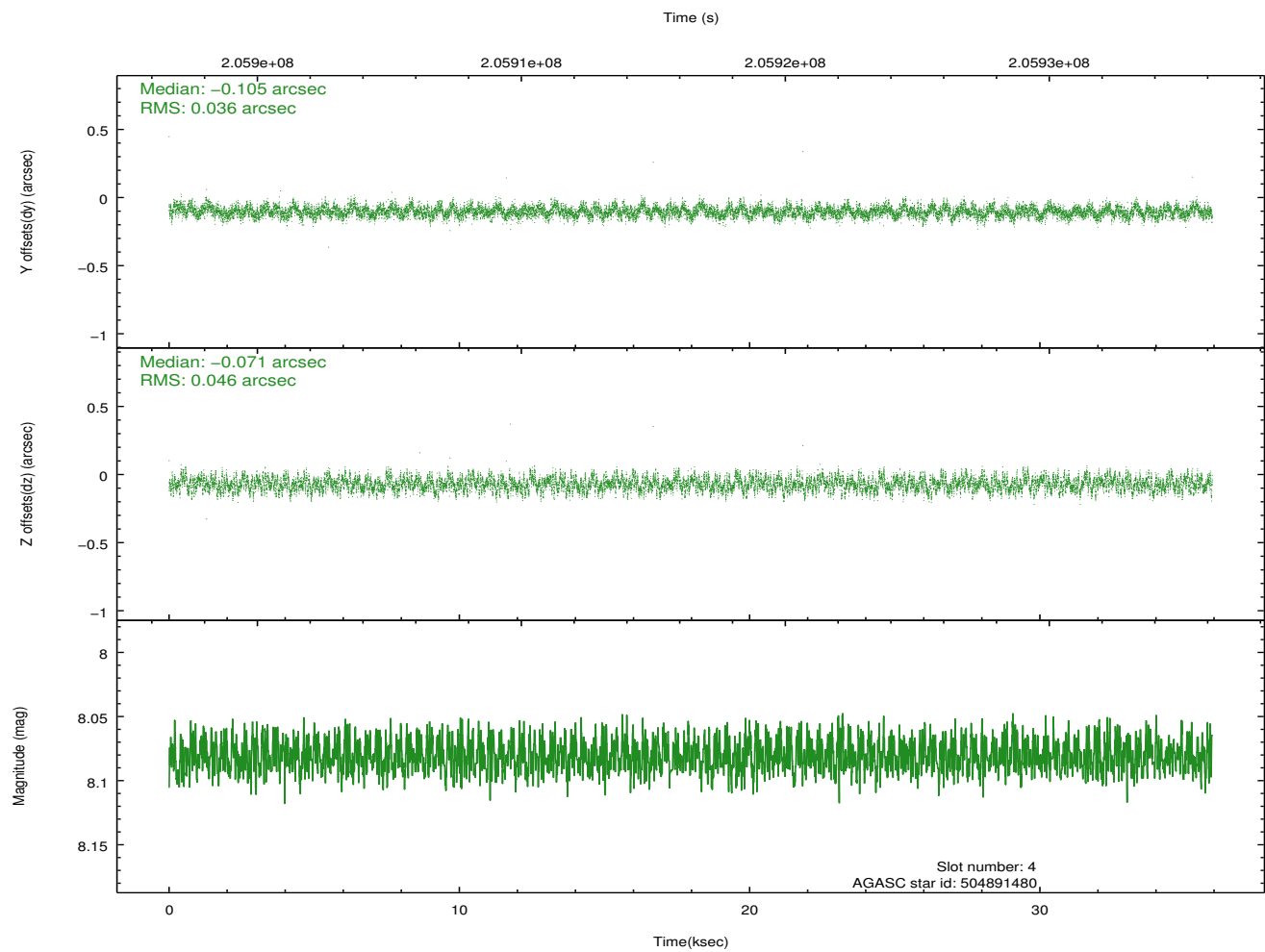
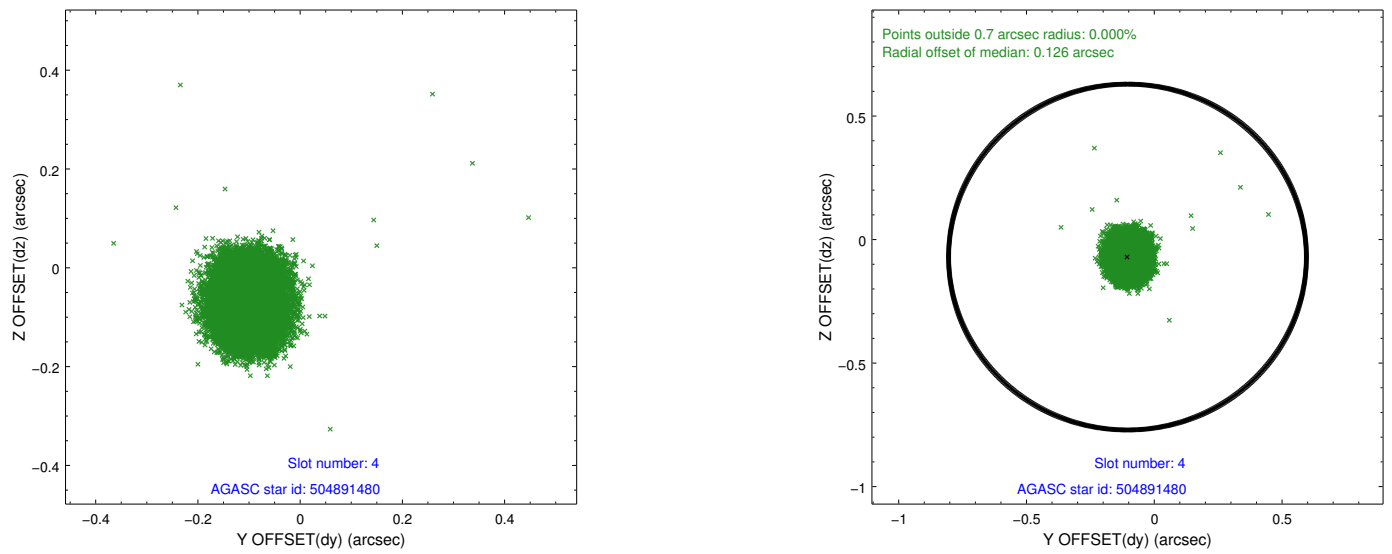
∞

2.4 Star Slots

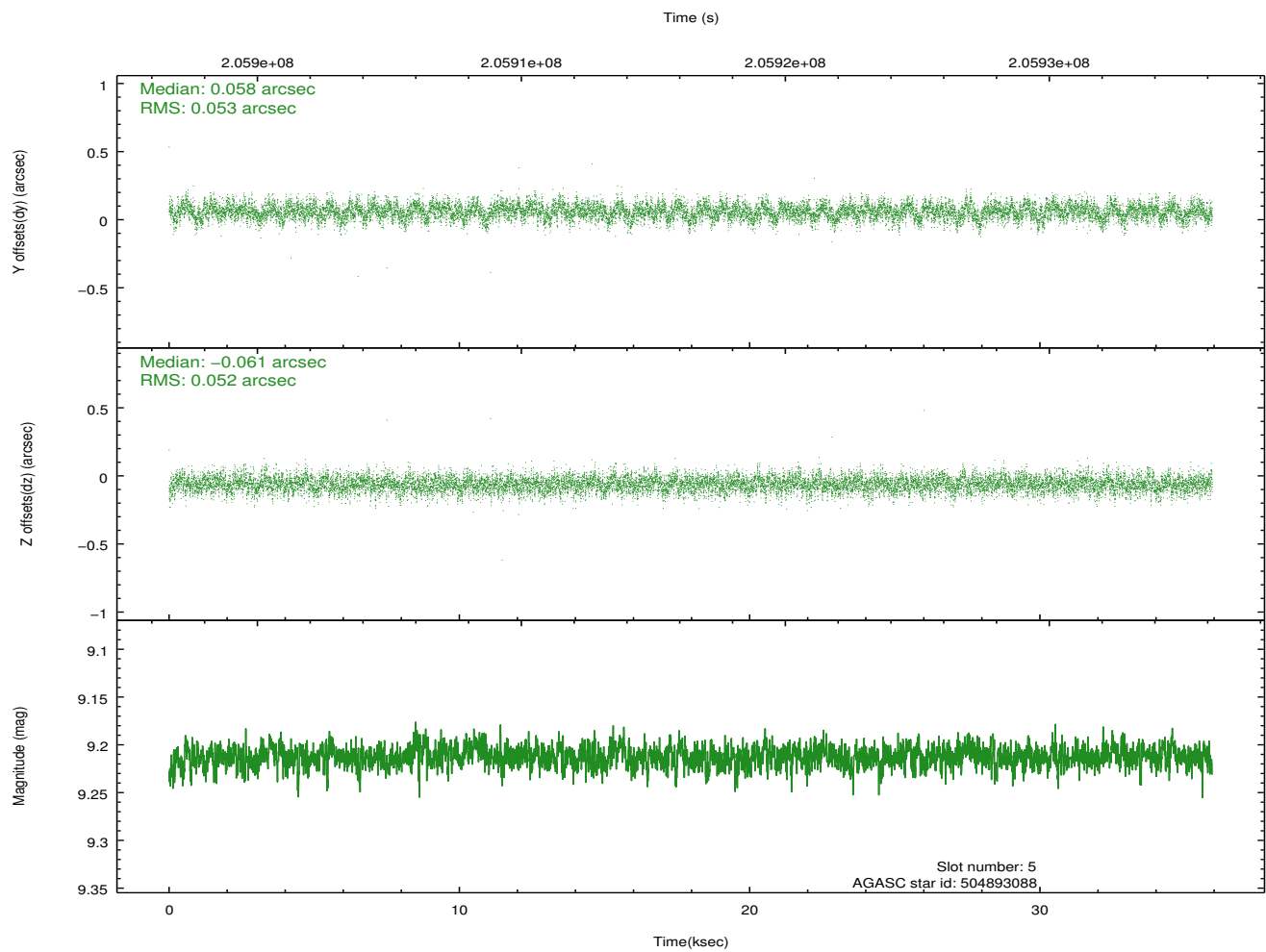
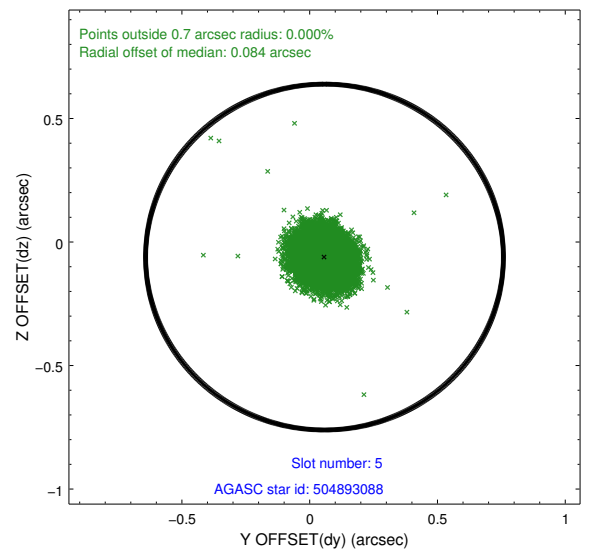
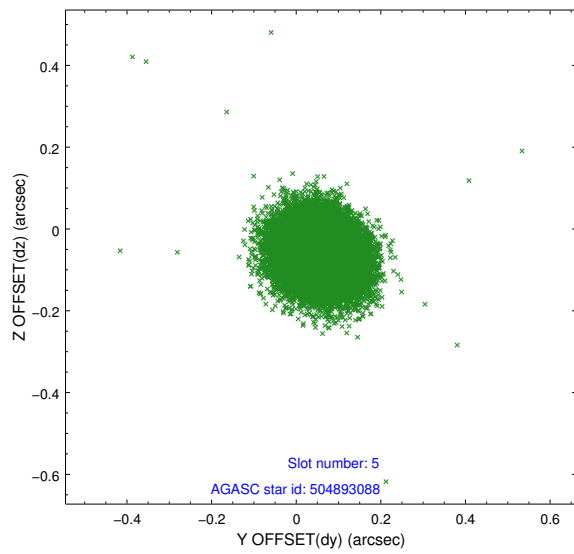
2.4.1 Slot 3



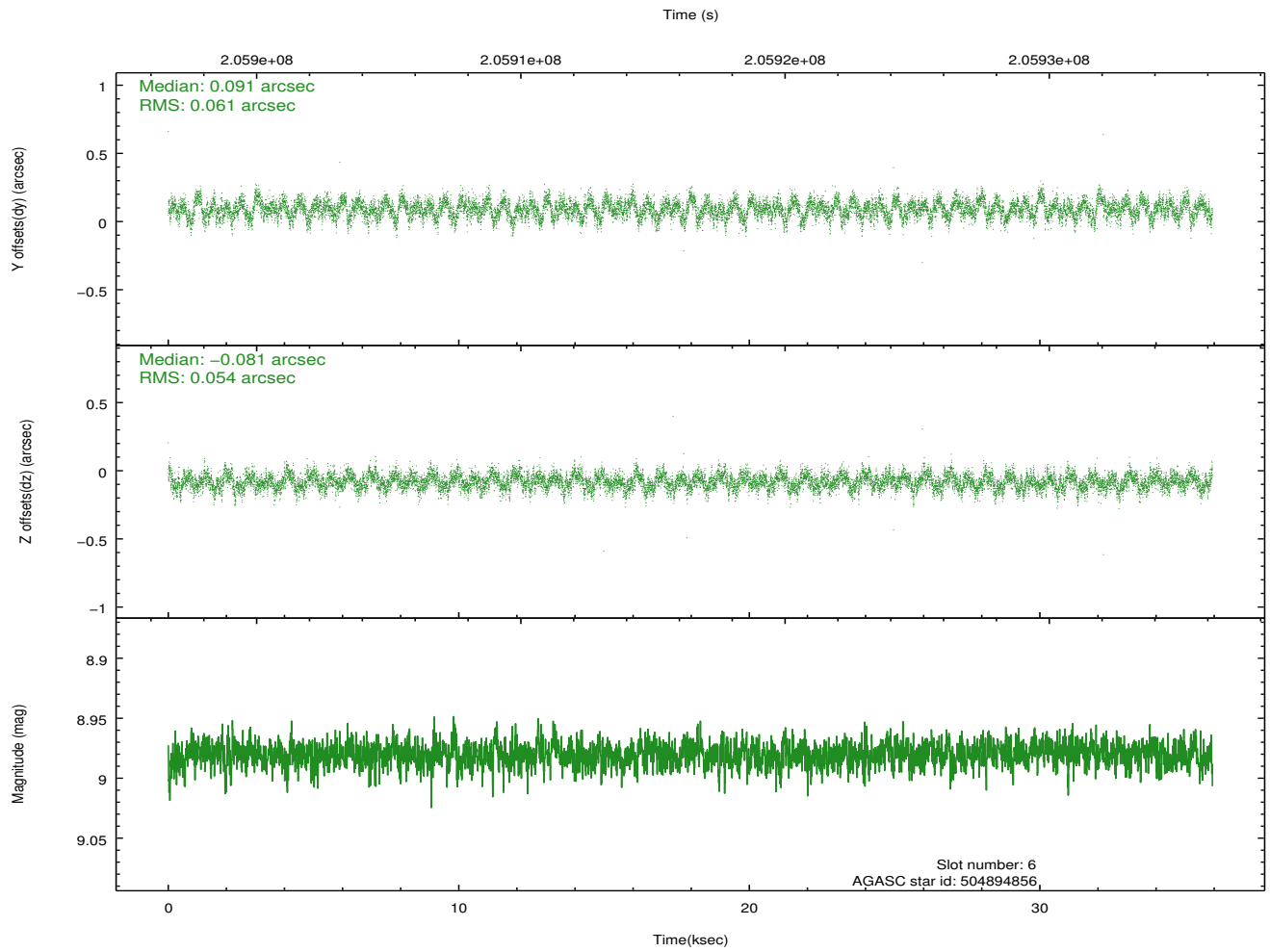
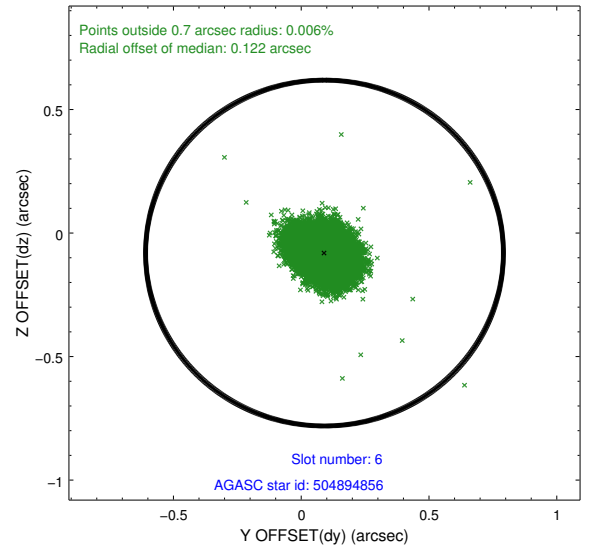
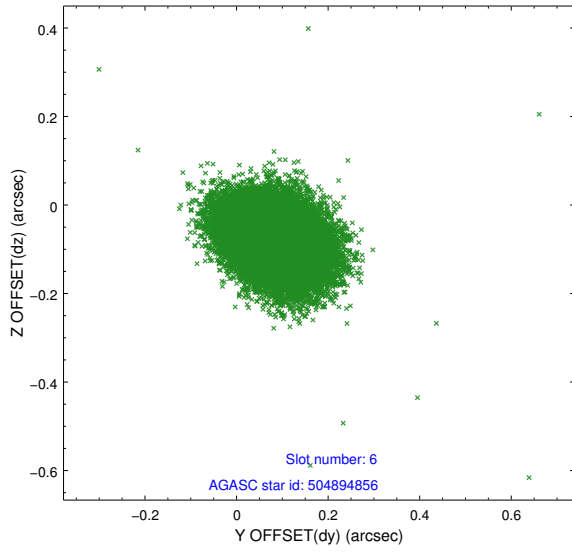
2.4.2 Slot 4



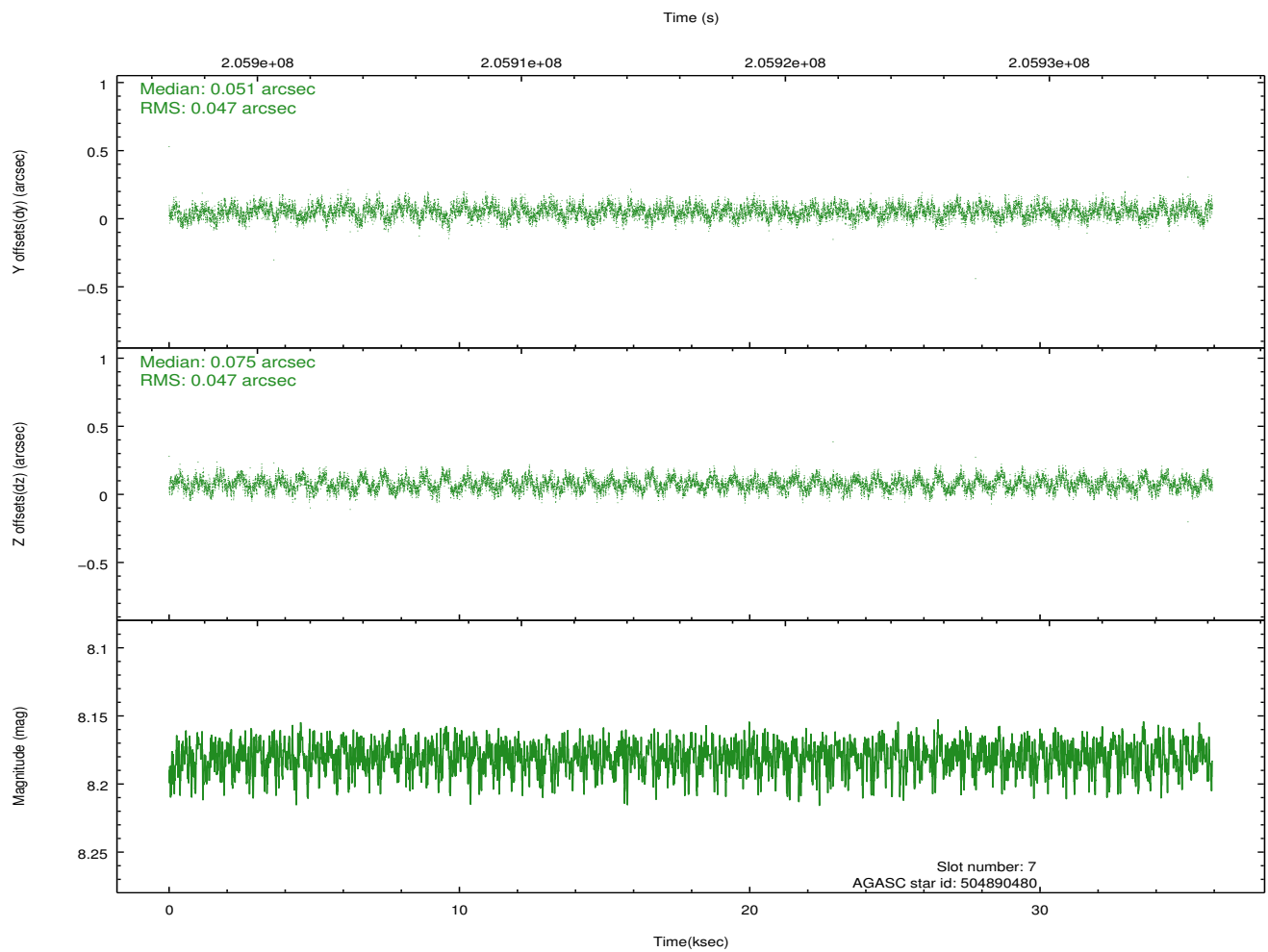
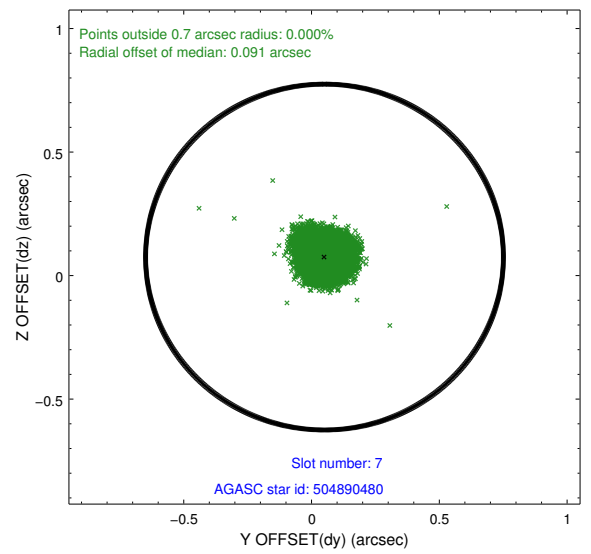
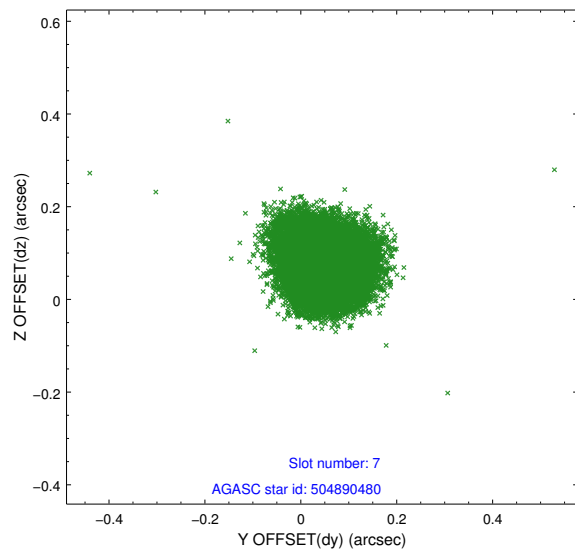
2.4.3 Slot 5



2.4.4 Slot 6

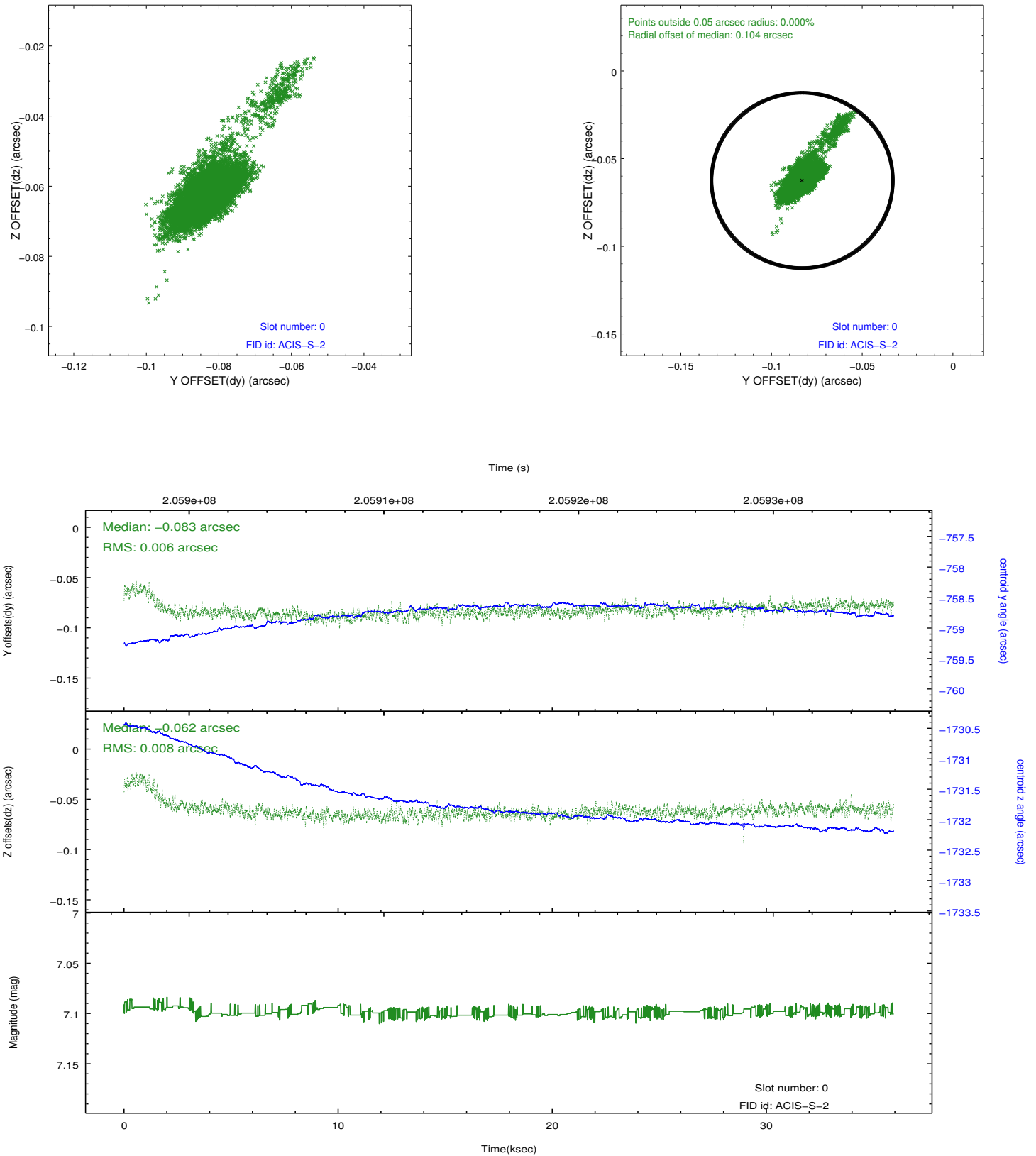


2.4.5 Slot 7

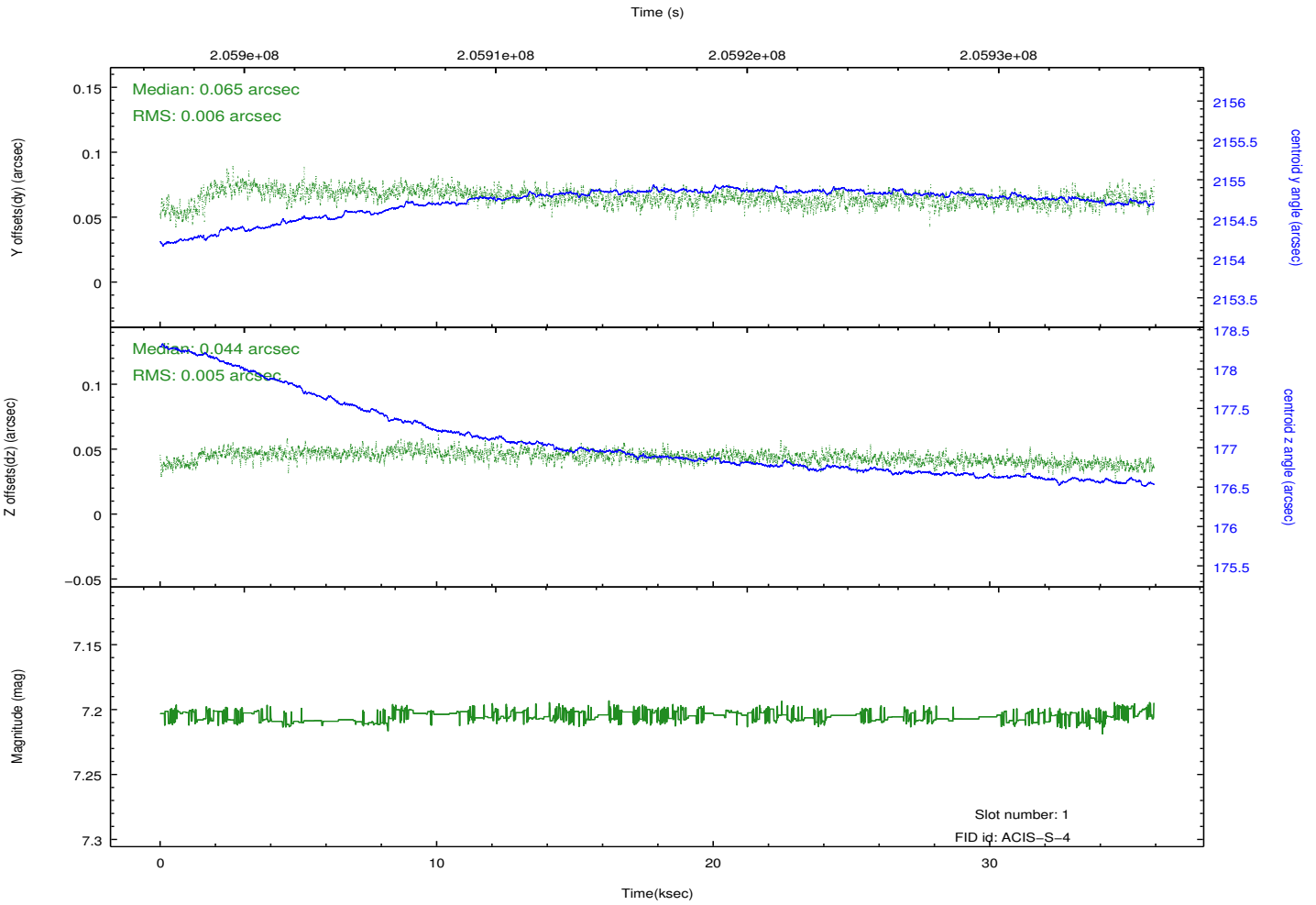
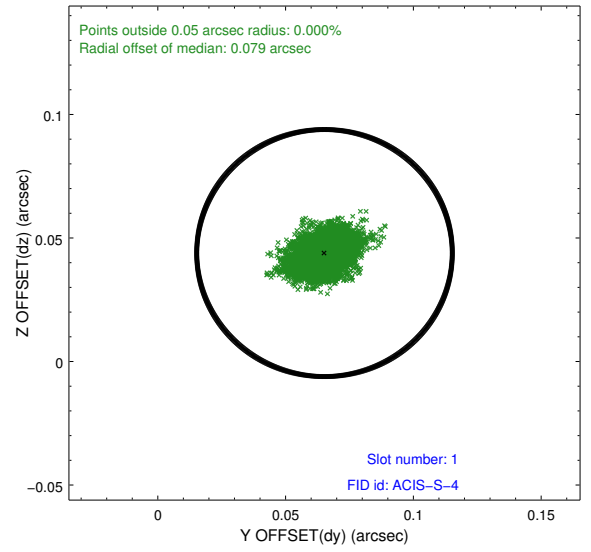
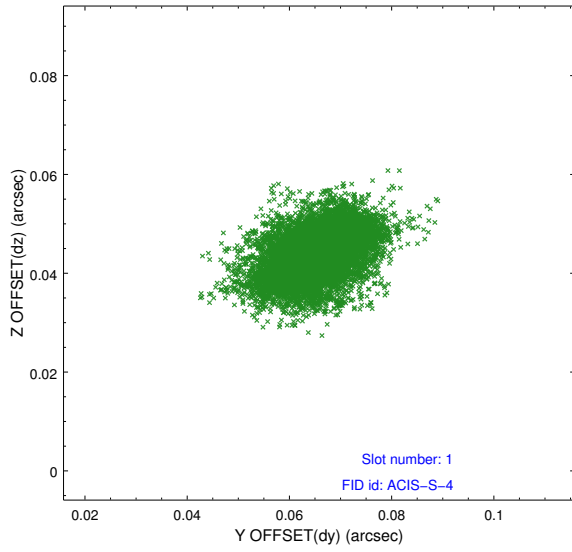


2.5 FID Slots

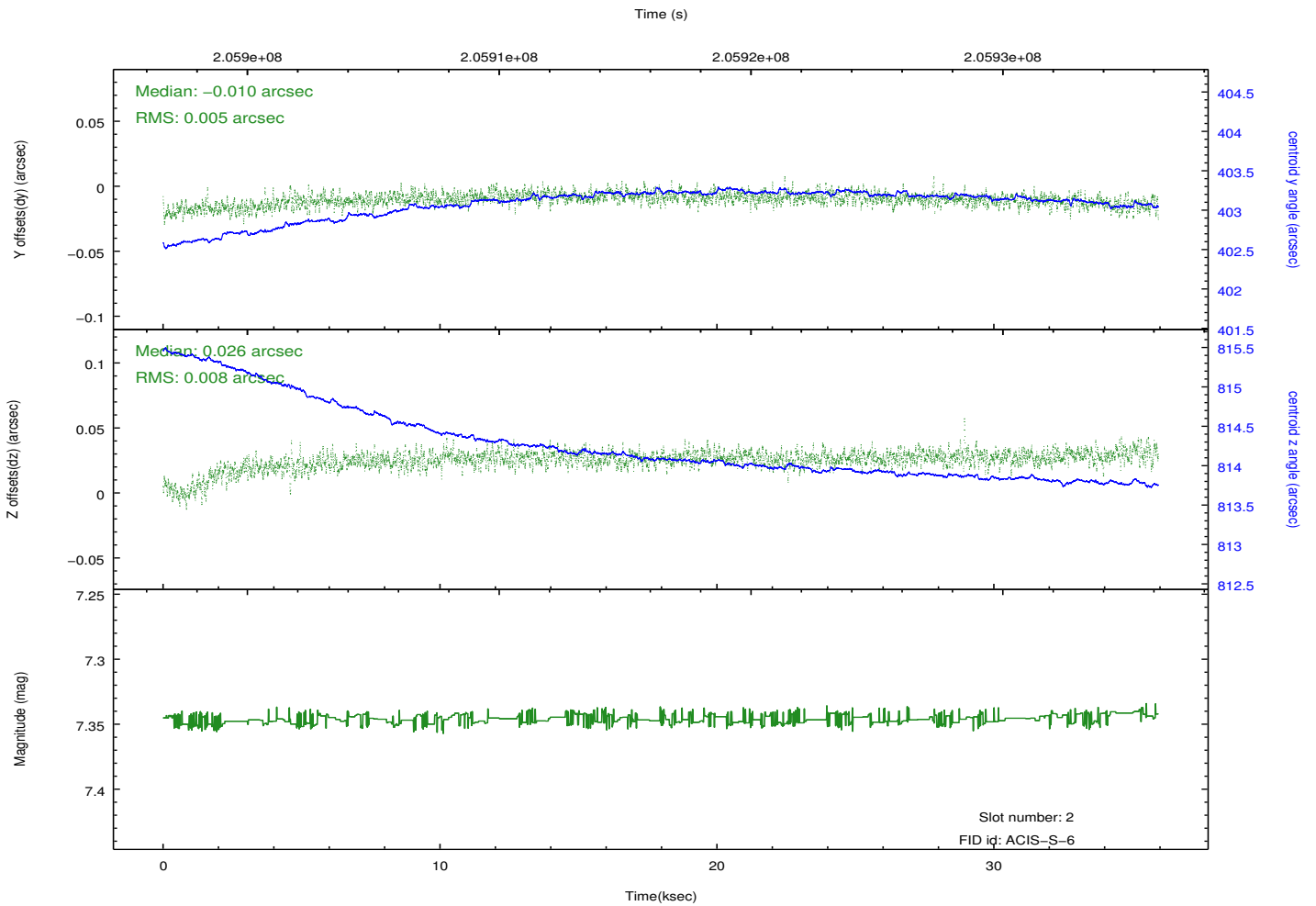
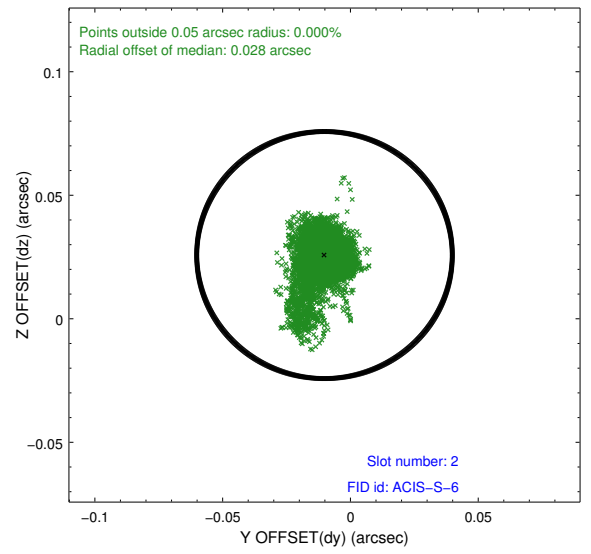
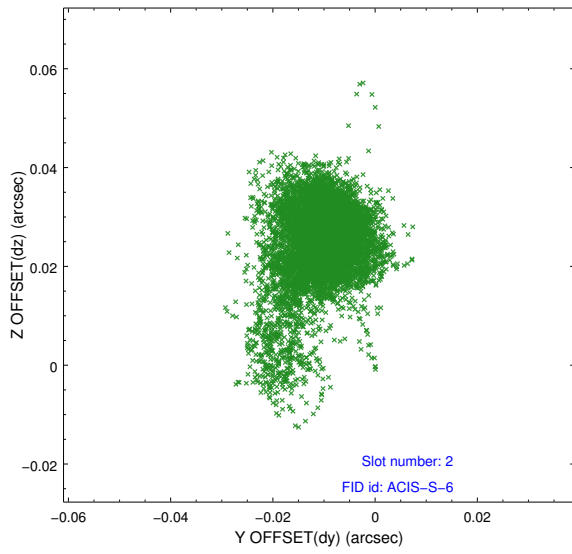
2.5.1 Slot 0



2.5.2 Slot 1



2.5.3 Slot 2



A Summary

A.1 Status

V&V Scientist	Beth Sundheim
V&V Date (YYYY-MM-DD)	2012.12.11
V&V Edition	1
V&V Disposition and Status	OK
V&V Charge Time	35.932

A.2 Comments