

V&V Reference Report

L2 ASCDS Version : 8.5

Observation 4934 - L2 Version 3
Chandra X-Ray Center

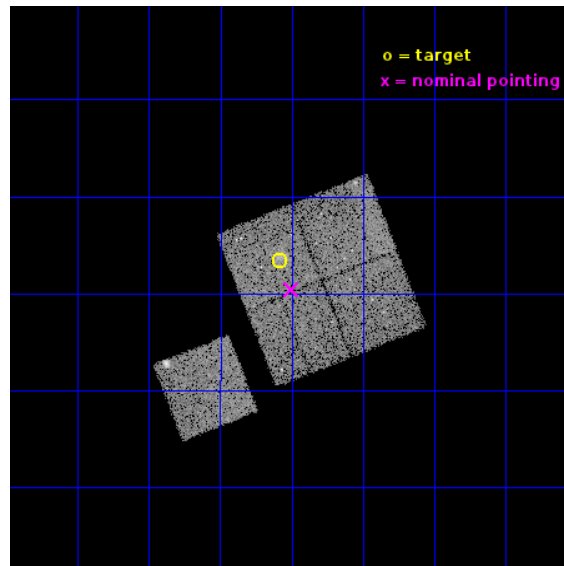
L2 Processing Date : Dec 6 2012

Contents

1	Front	2
2	OBI	3
2.1	OBI	3
2.1.1	Images	3
2.1.2	Bias	3
2.1.3	Parameters	4
2.1.4	Events	4
2.2	Compared Parameters	5
2.3	Aspect	6
2.4	Star Slots	9
2.4.1	Slot 3	9
2.4.2	Slot 4	10
2.4.3	Slot 5	11
2.4.4	Slot 6	12
2.4.5	Slot 7	13
2.5	FID Slots	14
2.5.1	Slot 0	14
2.5.2	Slot 1	15
2.5.3	Slot 2	16
A	Summary	17
A.1	Status	17
A.2	Comments	17

1 Front

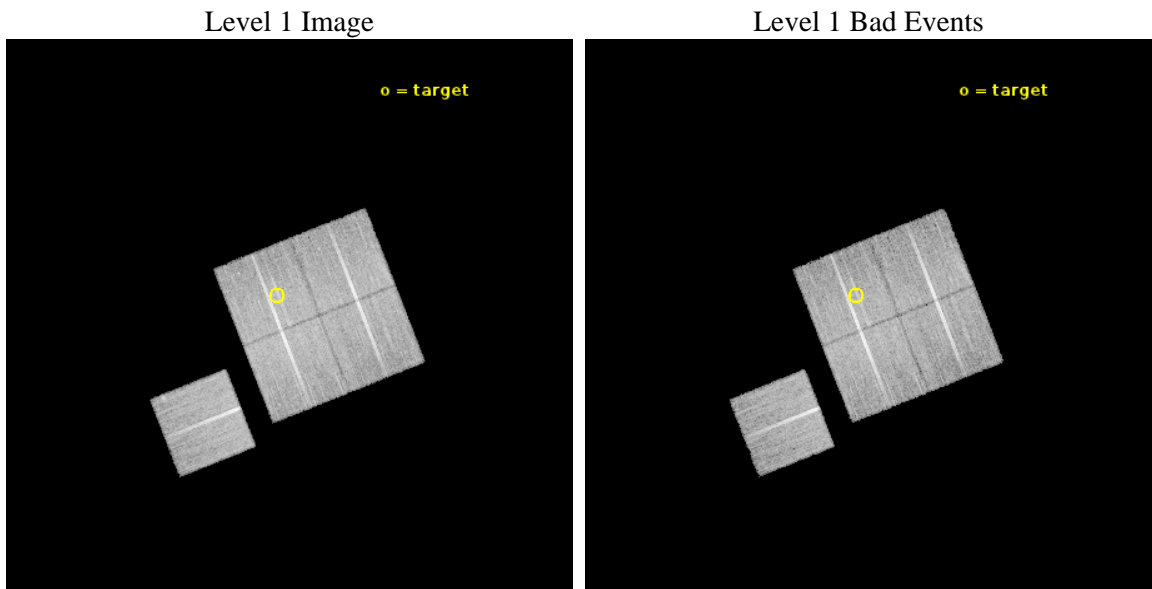
seq_num	800385	Sequence number
obs_id	4934	Observation id
title	Chandra snapshot survey of 10 distant clusters of galaxies	Proposa
observer	Dr. Stephen Murray	Principal investigator
object	CL1213+0253	Source name
dtycle	0	
cycle	P	events from which exps? Prim/Second/Both
ra_targ	183.397083	Observer's specified target RA [deg]
dec_targ	2.890556	Observer's specified target Dec [deg]
ra_nom	183.37528632125	Nominal RA [deg]
dec_nom	2.8407886803977	Nominal Dec [deg]
roll_nom	248.47579604704	Nominal Roll [deg]
revision	3	Processing version of data
ontime	19179.699963093	Sum of GTIs [s]
livetime	18929.103063185	Livetime [s]
ontime0	19176.559022754	Sum of GTIs [s]
ontime1	19176.558992863	Sum of GTIs [s]
ontime2	19176.558972925	Sum of GTIs [s]
ontime3	19179.699963093	Sum of GTIs [s]
ontime6	19176.559002846	Sum of GTIs [s]
l2events	51002	Number of level 2 events



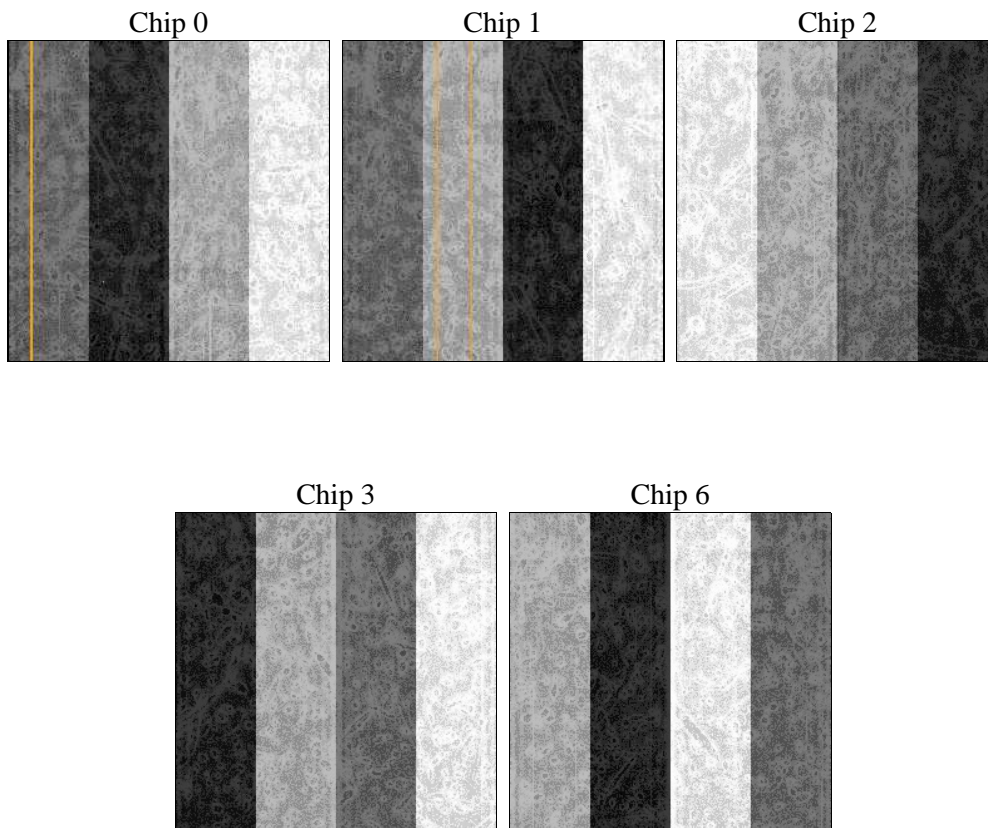
2 OBI

2.1 OBI

2.1.1 Images



2.1.2 Bias



2.1.3 Parameters

obi_num	0	Obi number	sched_exp_time	19000.000000	[s] Scheduled observation exposure time
ascdsver	8.5	Processing system revision	ontime	19179.699963093	Sum of GTIs [s]
caldbver	4.5.4	 	ontime0	19176.559022754	Sum of GTIs [s]
date	2012-12-06T09:21:02	Date and time of file creation	ontime1	19176.558992863	Sum of GTIs [s]
revision	3	Processing version of data	ontime2	19176.558972925	Sum of GTIs [s]
			ontime3	19179.699963093	Sum of GTIs [s]
			ontime6	19176.559002846	Sum of GTIs [s]
			l1events	601327	Number of level 1 events

2.1.4 Events

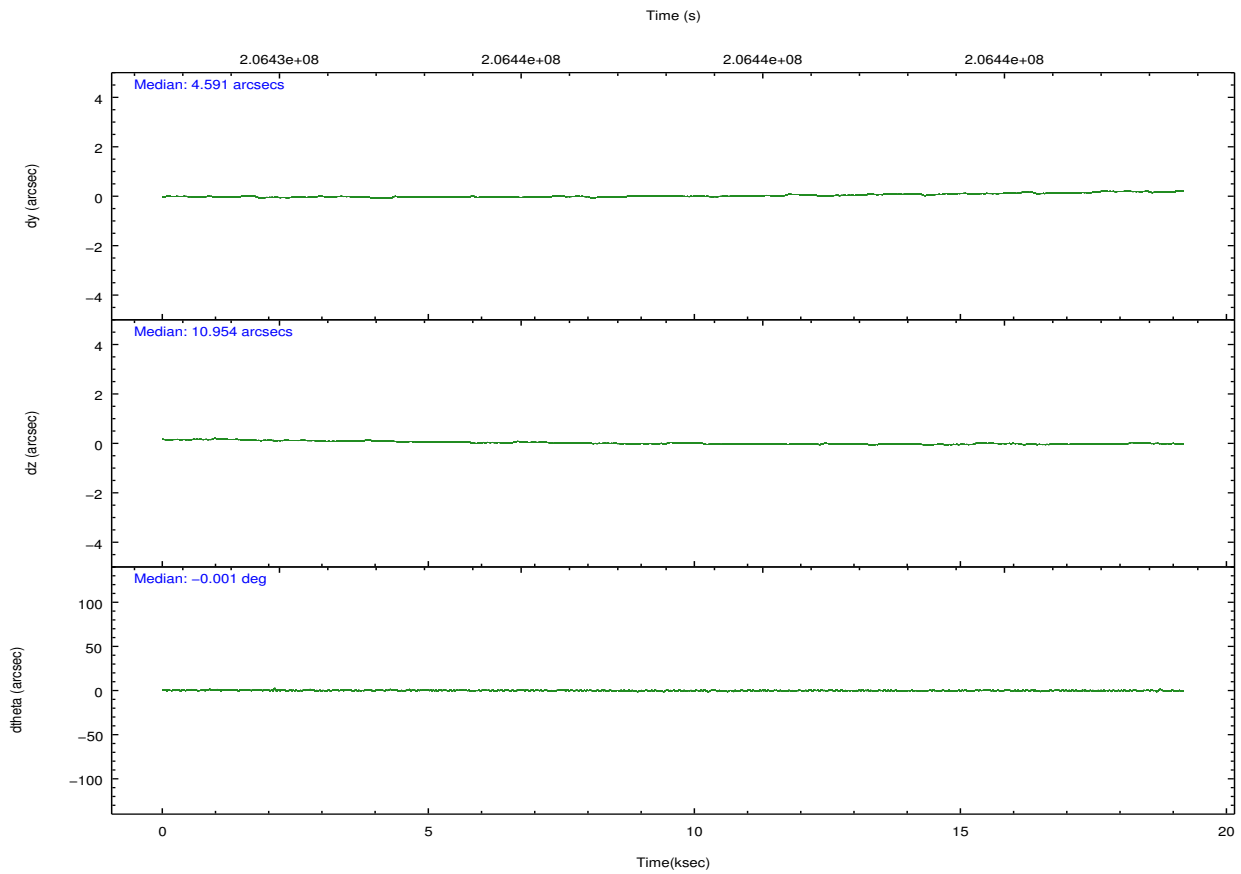
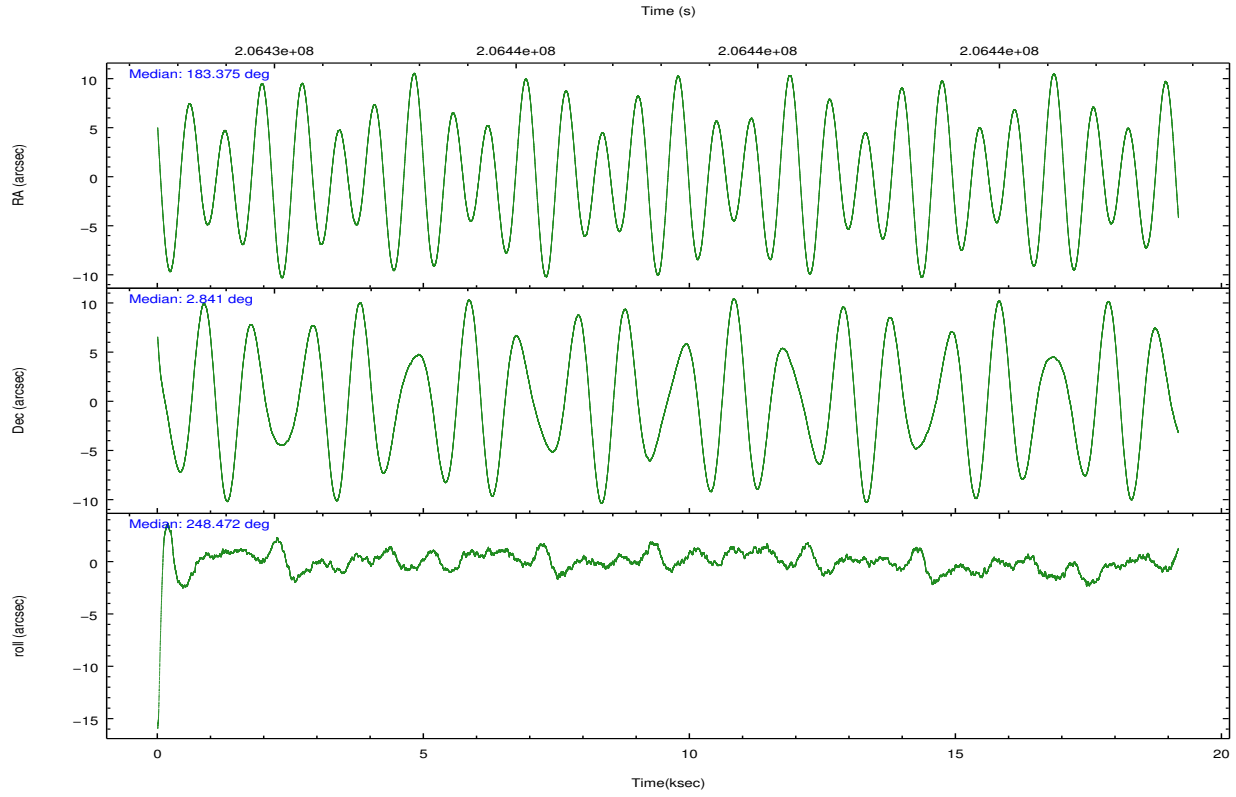
	ccd 0	ccd 1	ccd 2	ccd 3	ccd 6
level 1 events	113205	116829	127700	122638	120955
rejected events	101768	103683	116158	110591	108202
rejected %	89%	88%	90%	90%	89%

	ccd 0	ccd 1	ccd 2	ccd 3	ccd 6
grade 0 events	4207	5199	4443	4854	5018
	3%	4%	3%	3%	4%
grade 1 events	62	51	68	59	57
	0%	0%	0%	0%	0%
grade 2 events	2857	2878	2731	2554	2711
	2%	2%	2%	2%	2%
grade 3 events	1391	1551	1311	1381	1397
	1%	1%	1%	1%	1%
grade 4 events	1254	1476	1326	1323	1380
	1%	1%	1%	1%	1%
grade 5 events	4361	4394	4139	4757	4673
	3%	3%	3%	3%	3%
grade 6 events	2332	2714	2325	2463	2857
	2%	2%	1%	2%	2%
grade 7 events	96741	98566	111357	105247	102862
	85%	84%	87%	85%	85%

2.2 Compared Parameters

Parameter	Planned	Actual	Parameter	Planned	Actual
Instrument	ACIS	ACIS	Obspar format version number	7	7
Detector	ACIS-01236	ACIS-01236	Obspar file type	PREDICTED	ACTUAL
Grating	NONE	NONE	Obspar update status	NONE	UPDATED
Data mode	VFAINT	VFAINT	Number of optional ACIS chips dropped	0	0
Observation mode	POINTING	POINTING	On-chip summing requested	N	N
[deg] Pointing RA	183.371148	183.3752863212517	Subarray requested	NONE	NONE
[deg] Pointing Dec	2.867869	2.840788680397714	Alternating exposures requested	N	N
[deg] Pointing Roll	248.267323	248.4757960470406	[s] Primary exposure time	0.000000	3.1
[mm] SIM focus pos	-0.782348	-0.7809083437167272			
[mm] SIM defocus	0	0.001439871863259334			
[mm] SIM translation stage pos	-225.840463	-225.8458576473255			
[mm] SIM translation stage offset	-7.752	-7.746595355604228			
[s] Observation start time (MET)	206428736.184000	206427260.95106			
Observation start date	2004-07-17T05:17:52	2004-07-17T04:54:20			
[s] Observation end time (MET)	206447736.184000	206448698.31451			
Observation end date	2004-07-17T10:34:32	2004-07-17T10:51:38			
Read mode	TIMED	TIMED			

2.3 Aspect

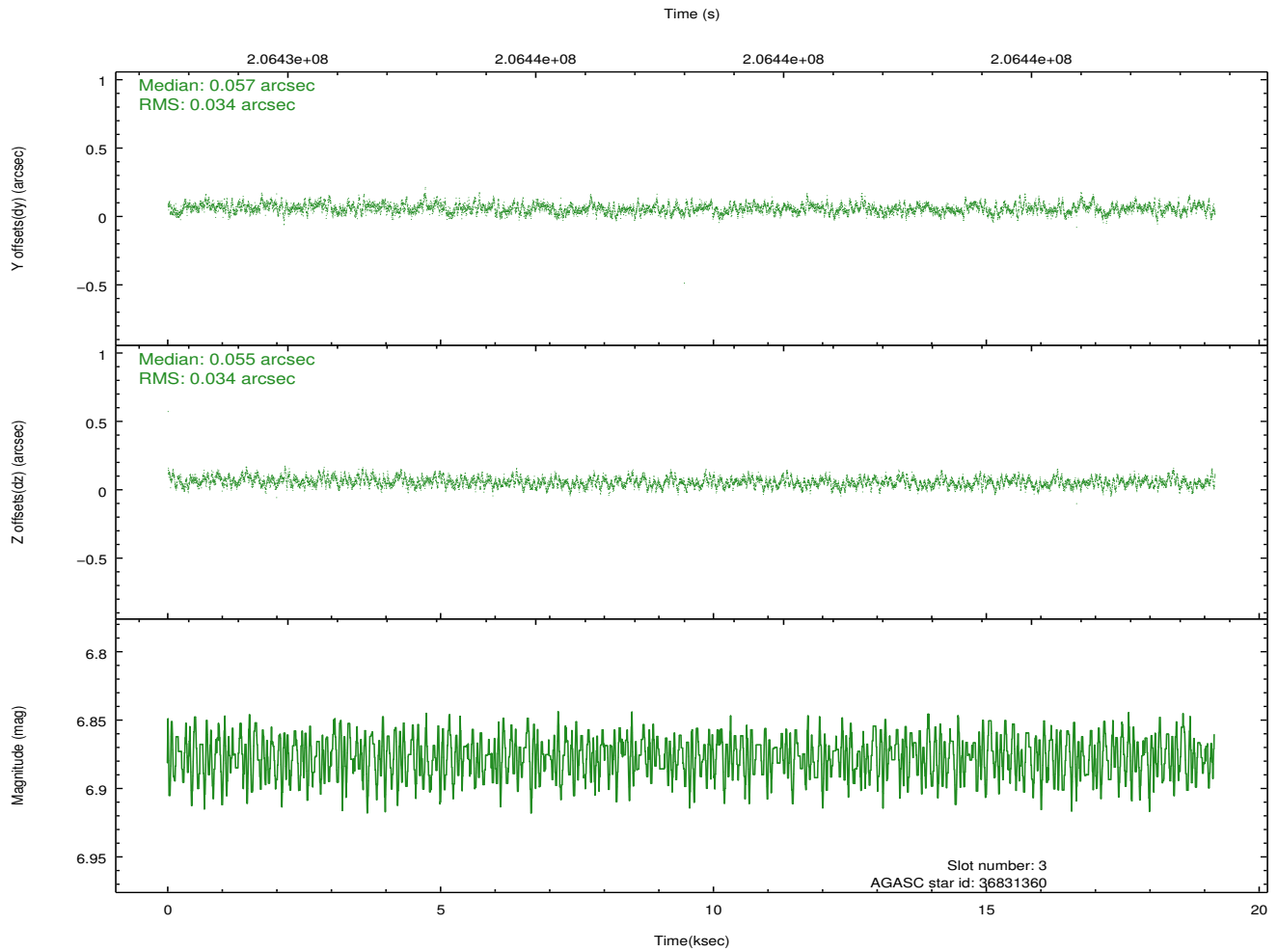
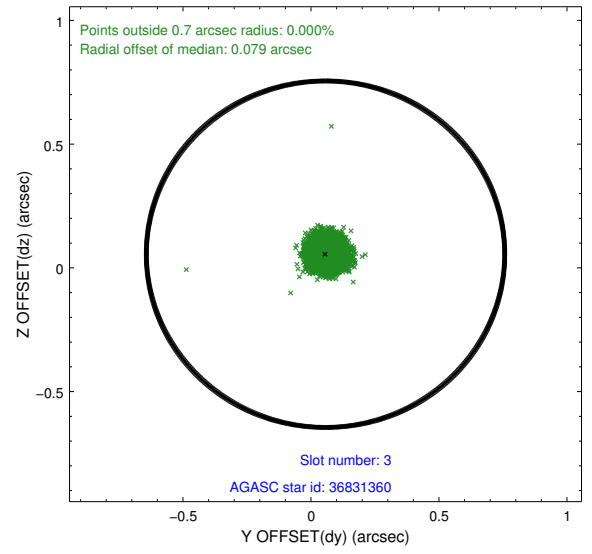
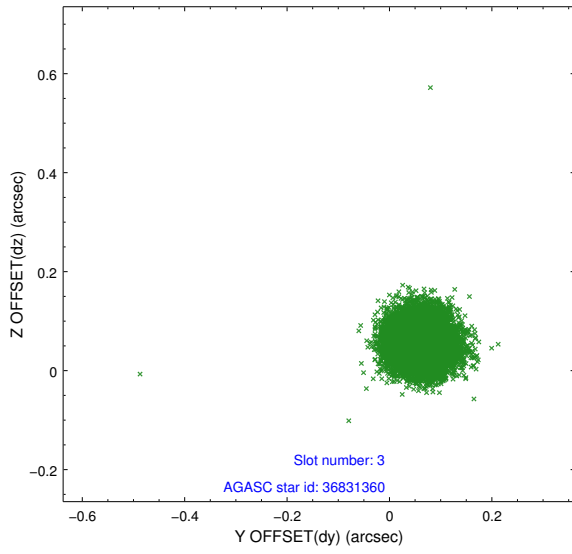


Slot Statistics

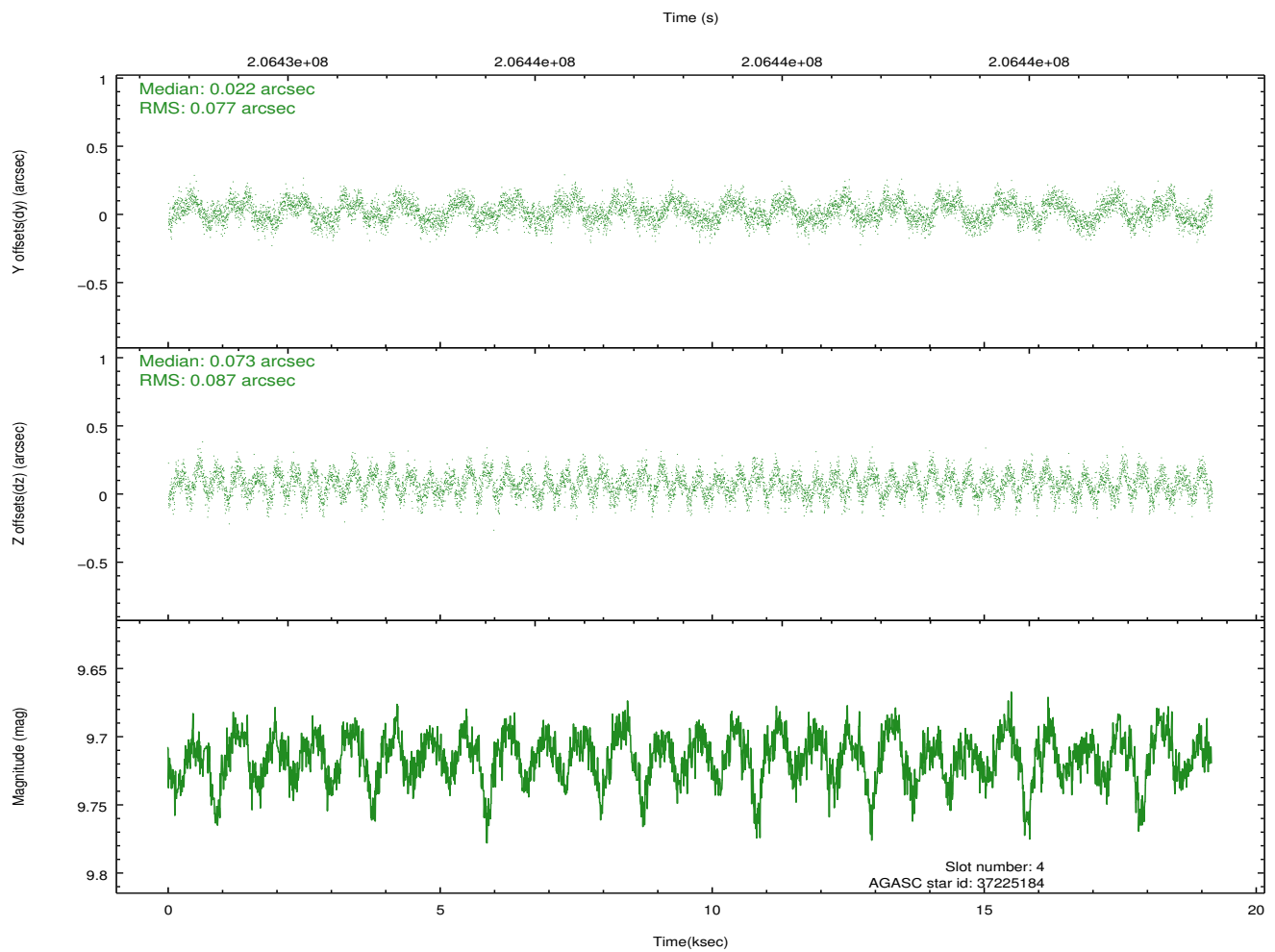
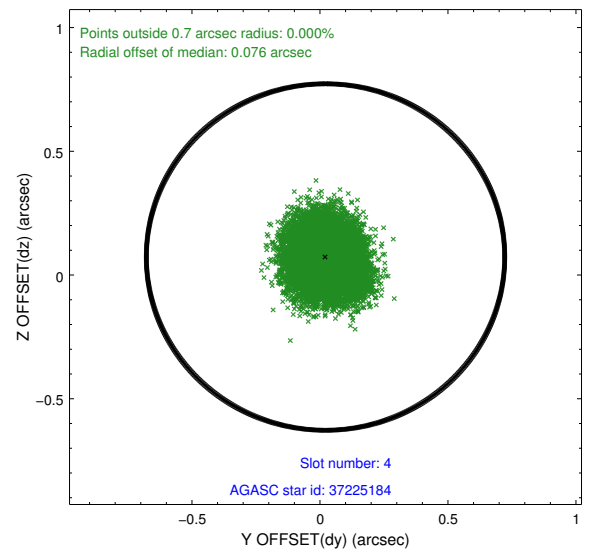
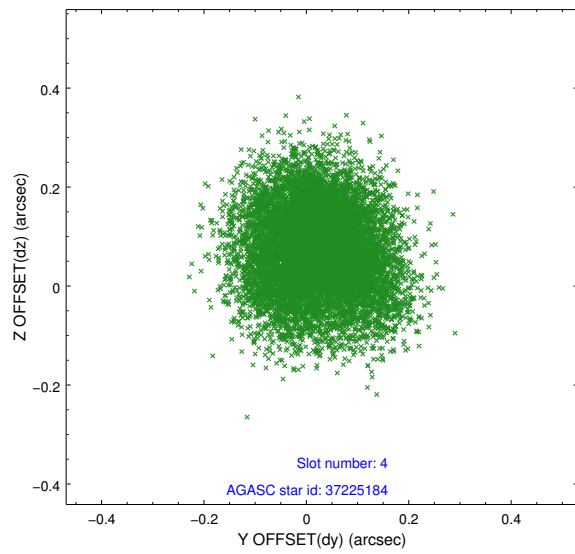
slot	status	id	mag	n_pts	med_dy	med_dz	dr1	dr2	ra	dec	mean_y	mean_z
0	FID	ACIS-I-1	7.23	4680	0.112	-0.090	0.010	0.020	0.000000	0.000000	935.07	-993.62
1	FID	ACIS-I-5	7.22	4679	-0.250	0.096	0.009	0.019	0.000000	0.000000	-1813.25	903.99
2	FID	ACIS-I-6	7.24	4679	0.047	0.064	0.008	0.013	0.000000	0.000000	400.39	1548.64
3	GUIDE	36831360	6.88	9359	0.057	0.055	0.050	0.081	183.482386	2.260219	1884.48	1181.78
4	GUIDE	37225184	9.71	9354	0.022	0.073	0.126	0.195	183.322910	3.026545	-465.68	-372.33
5	GUIDE	37225816	8.30	9355	0.060	0.014	0.050	0.082	182.886175	2.608011	1514.99	-1273.67
6	GUIDE	37227056	9.65	9351	0.083	-0.105	0.115	0.184	182.943906	3.124246	-288.22	-1768.73
7	GUIDE	37230440	7.75	9352	-0.219	-0.038	0.069	0.110	183.124640	3.404103	-1465.08	-1538.25

2.4 Star Slots

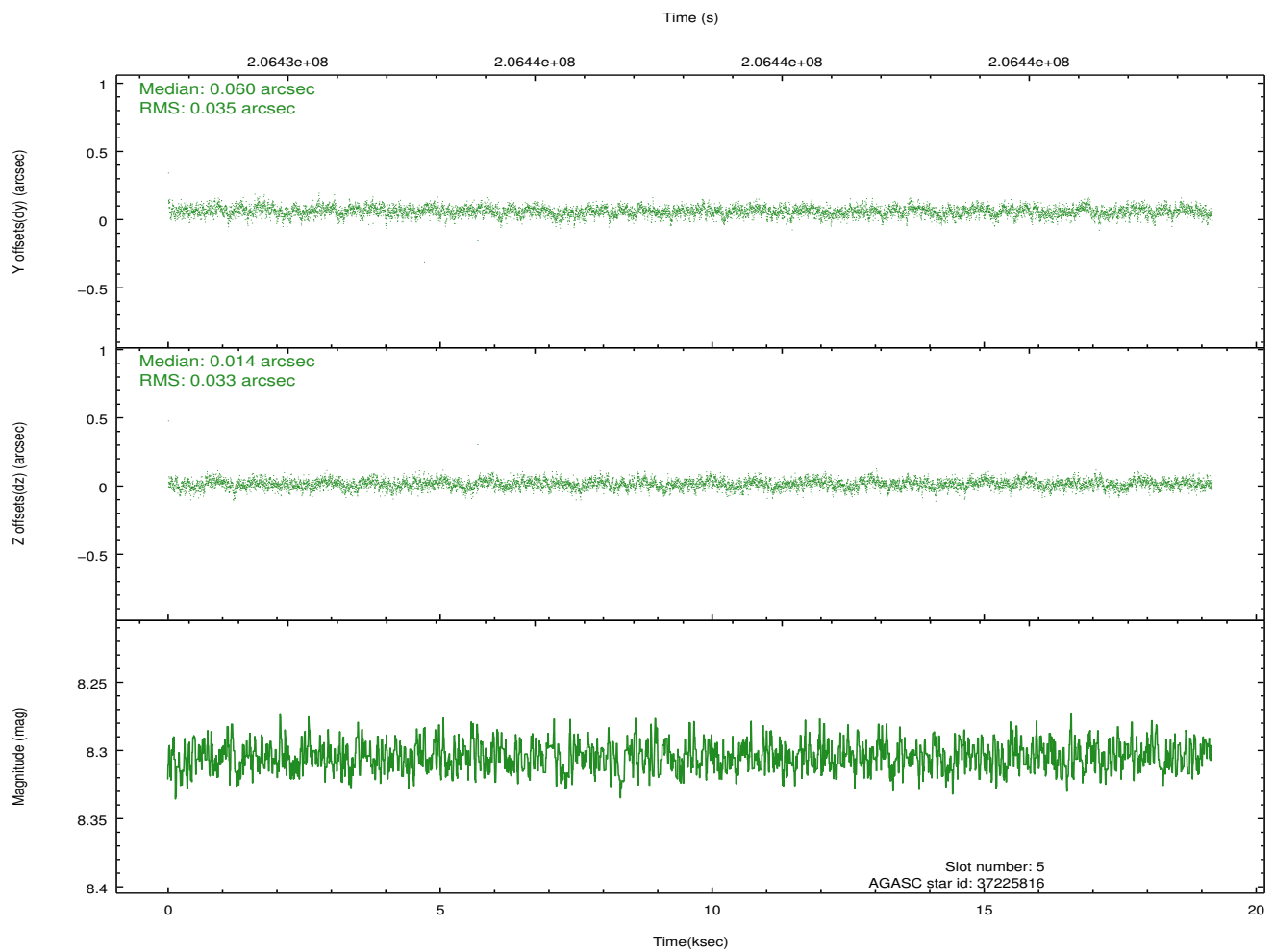
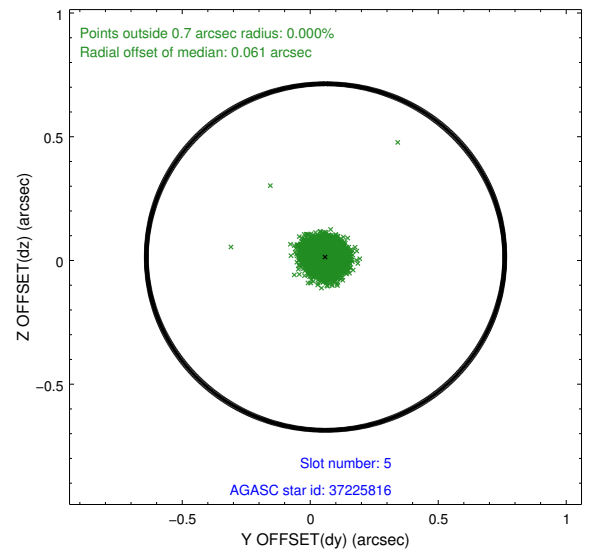
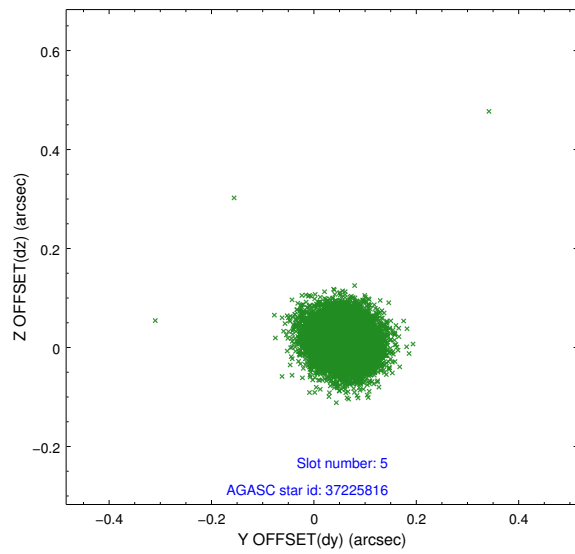
2.4.1 Slot 3



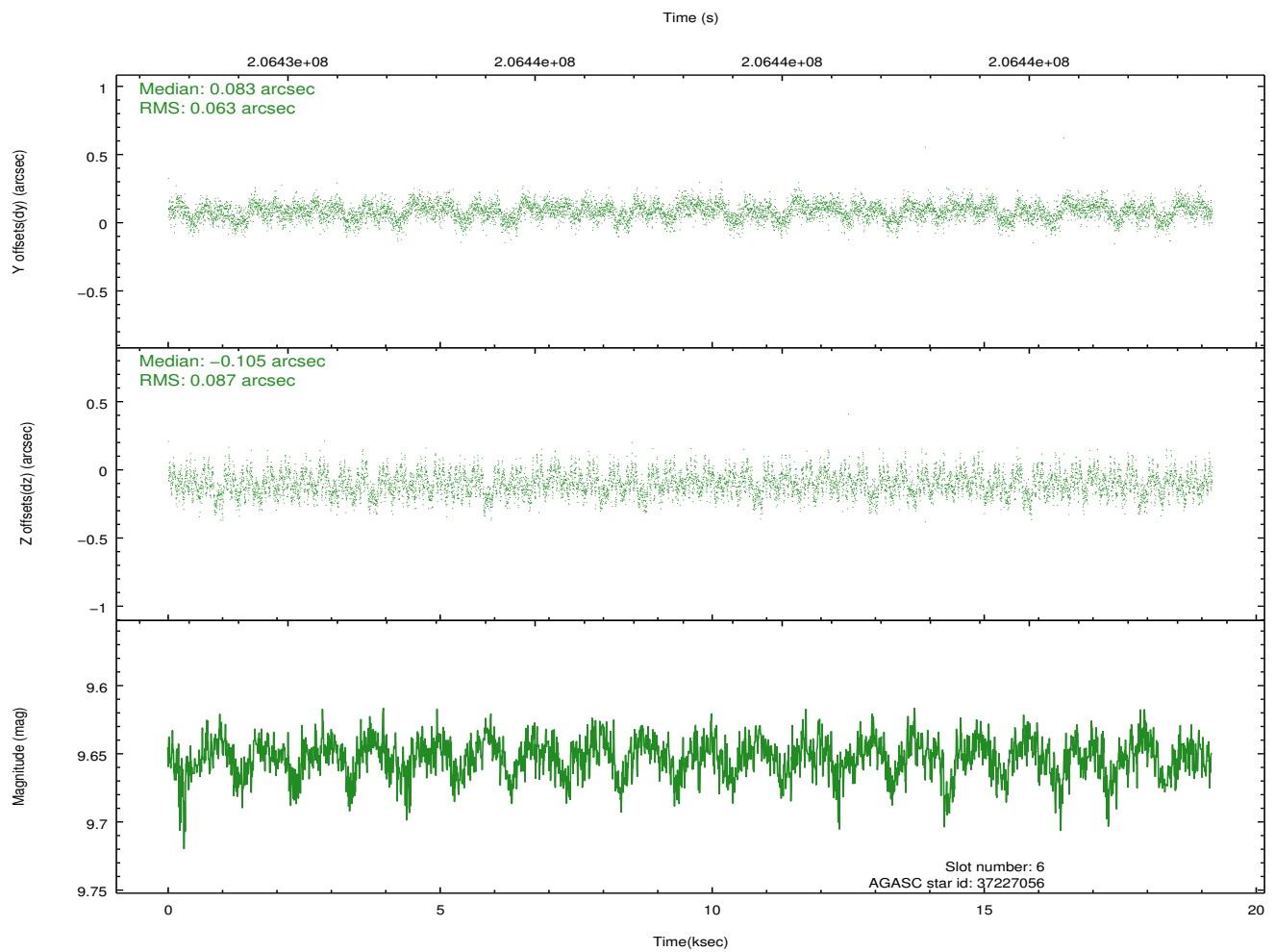
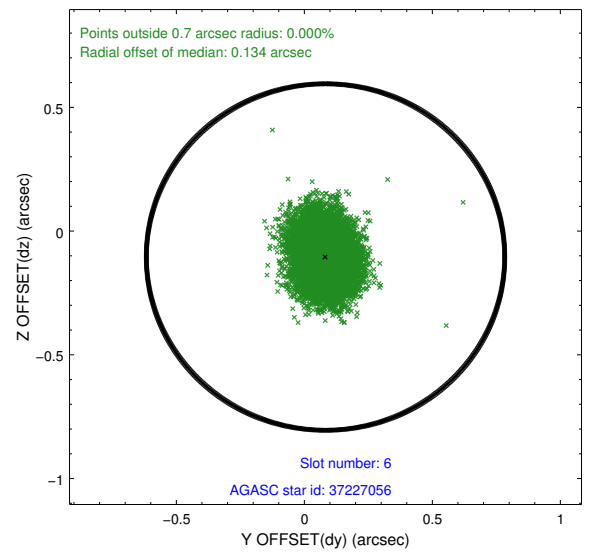
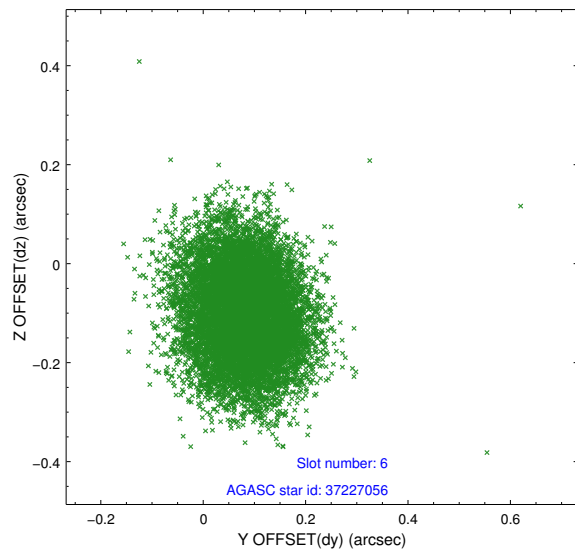
2.4.2 Slot 4



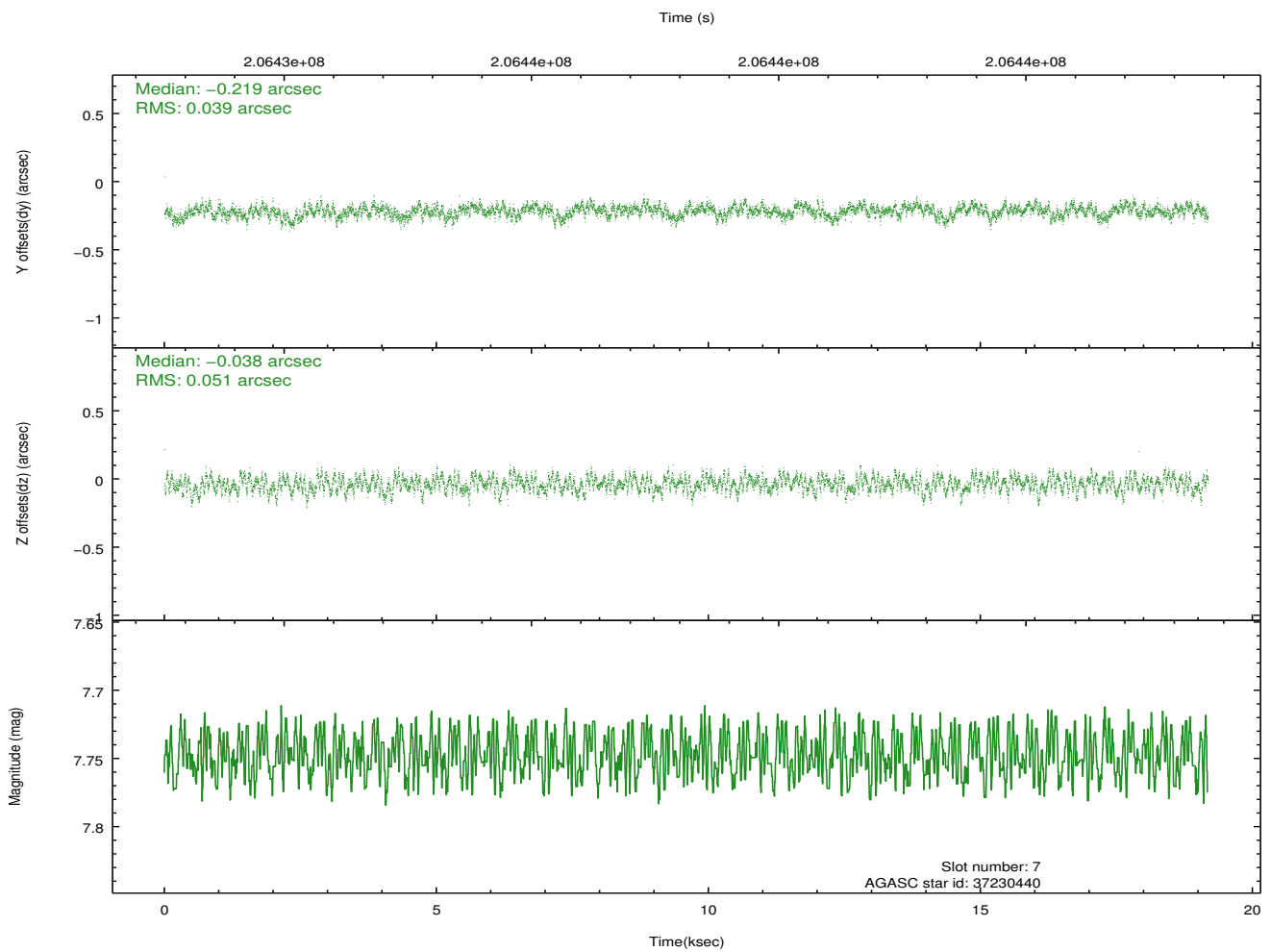
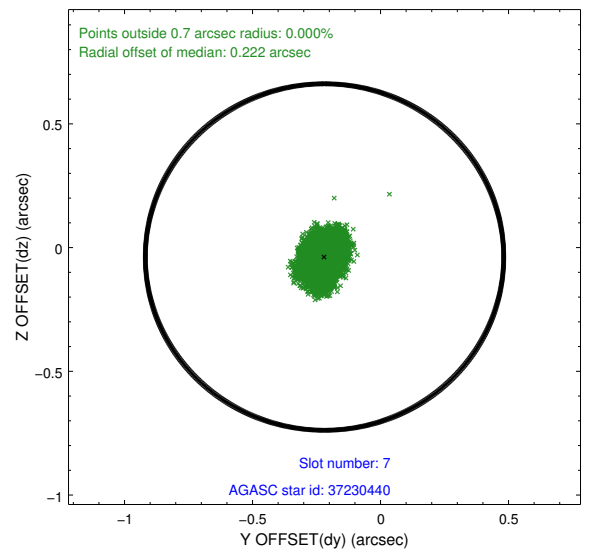
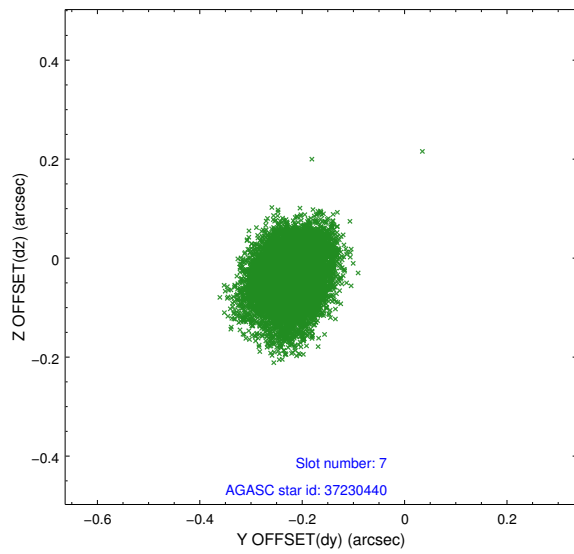
2.4.3 Slot 5



2.4.4 Slot 6

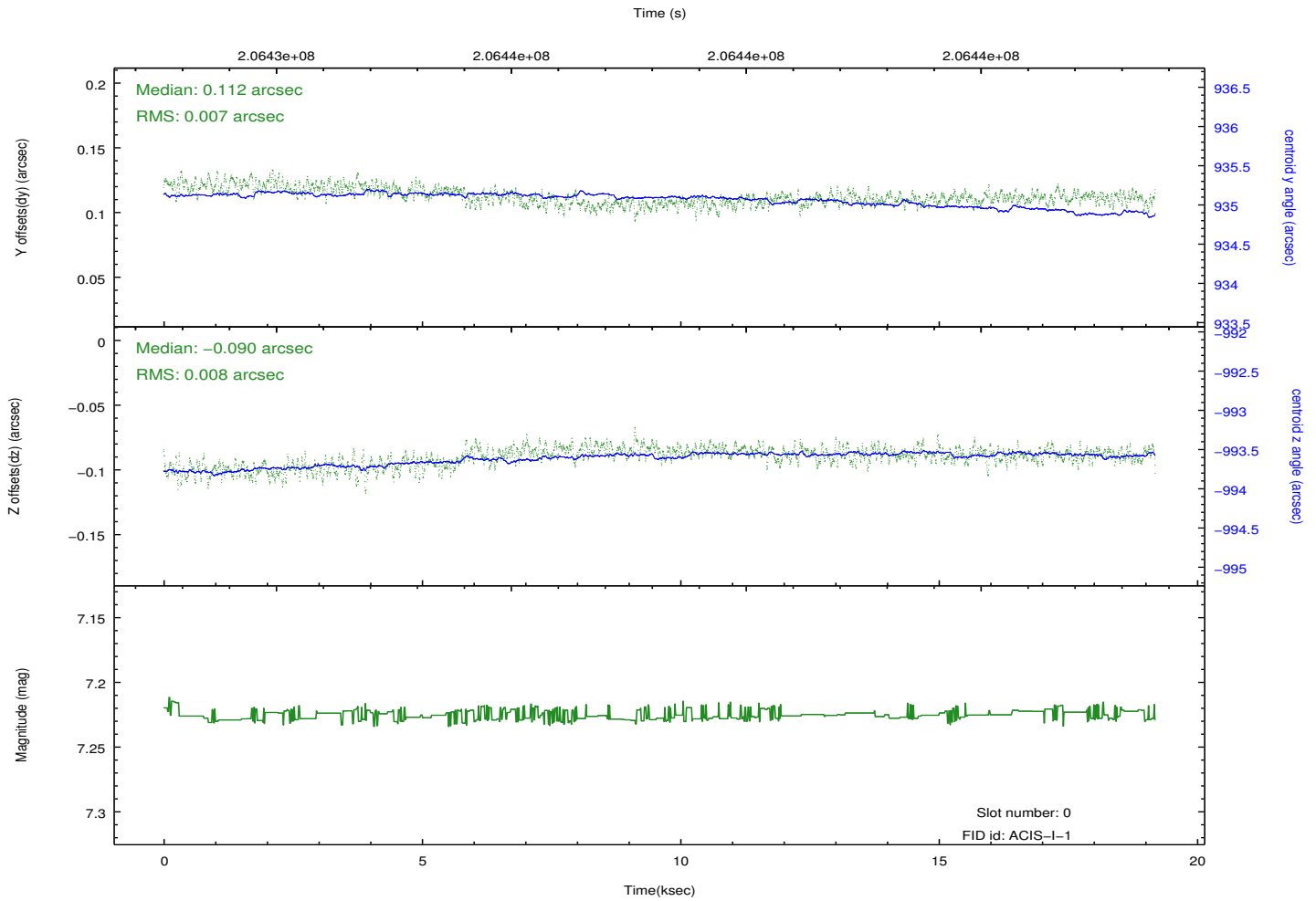
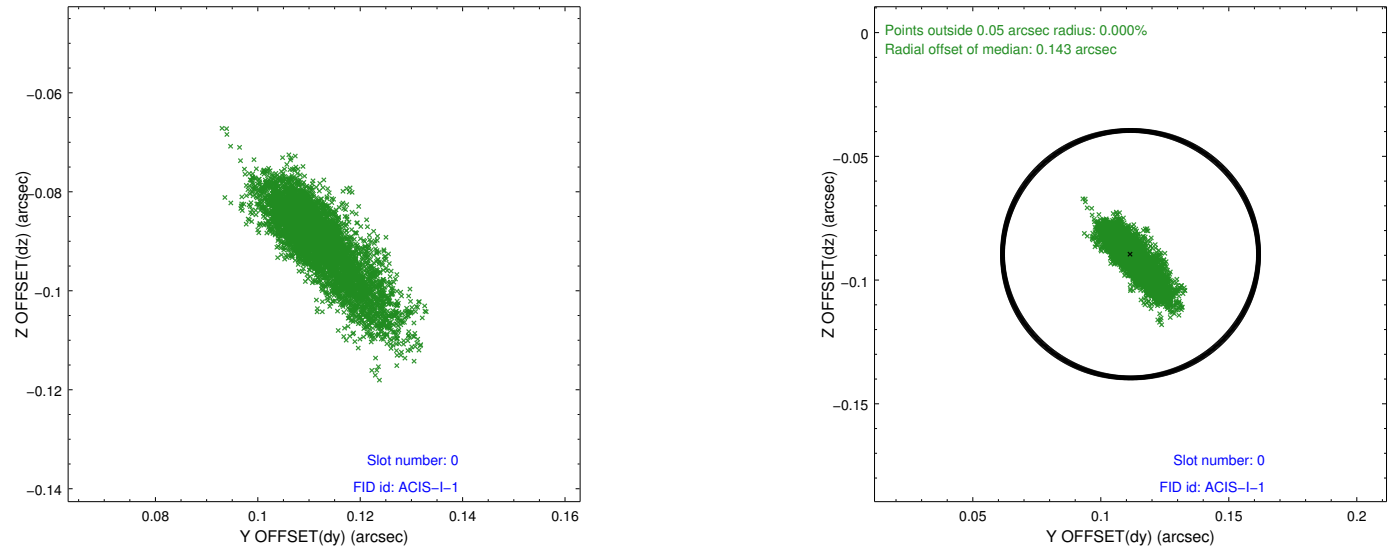


2.4.5 Slot 7

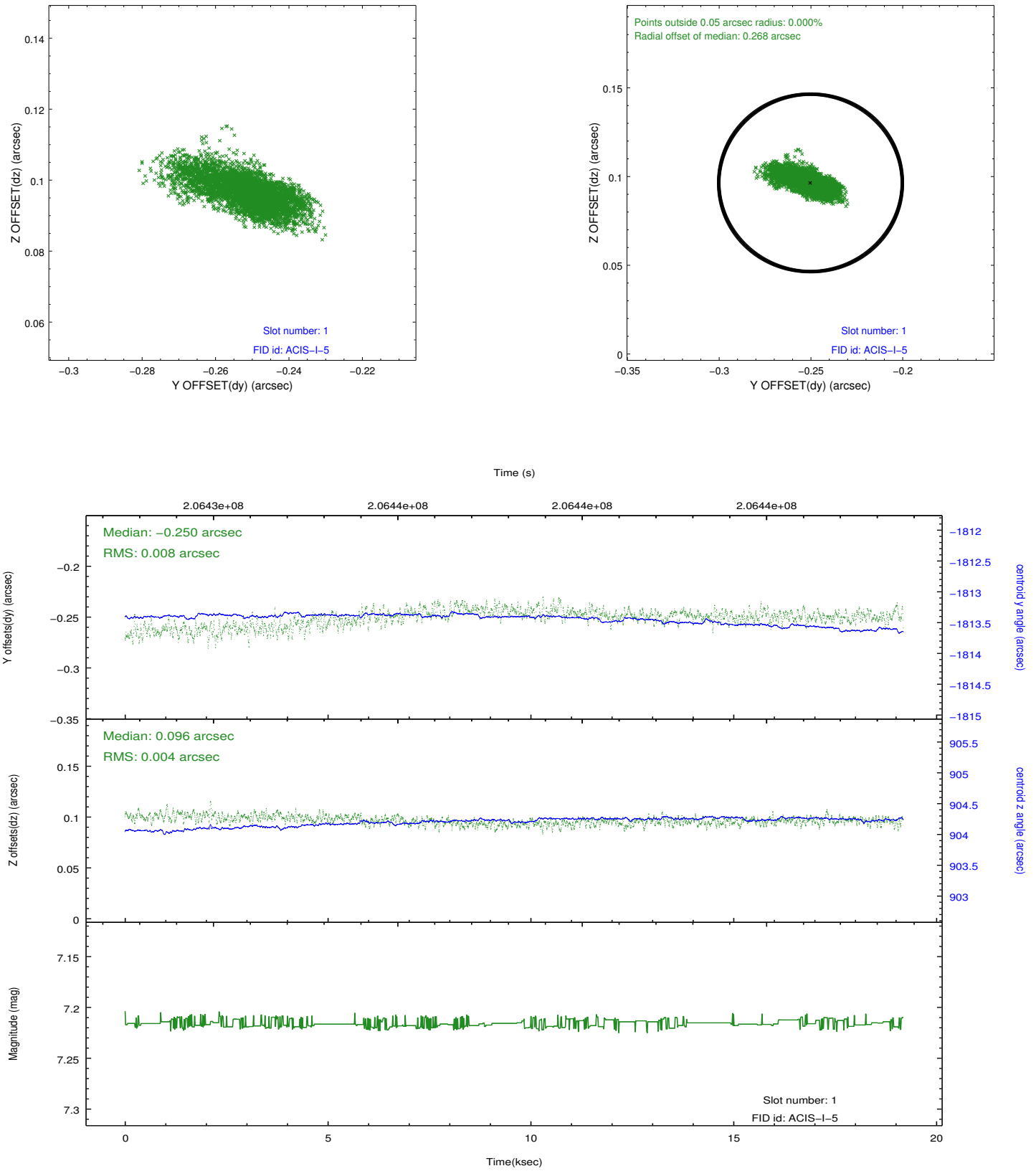


2.5 FID Slots

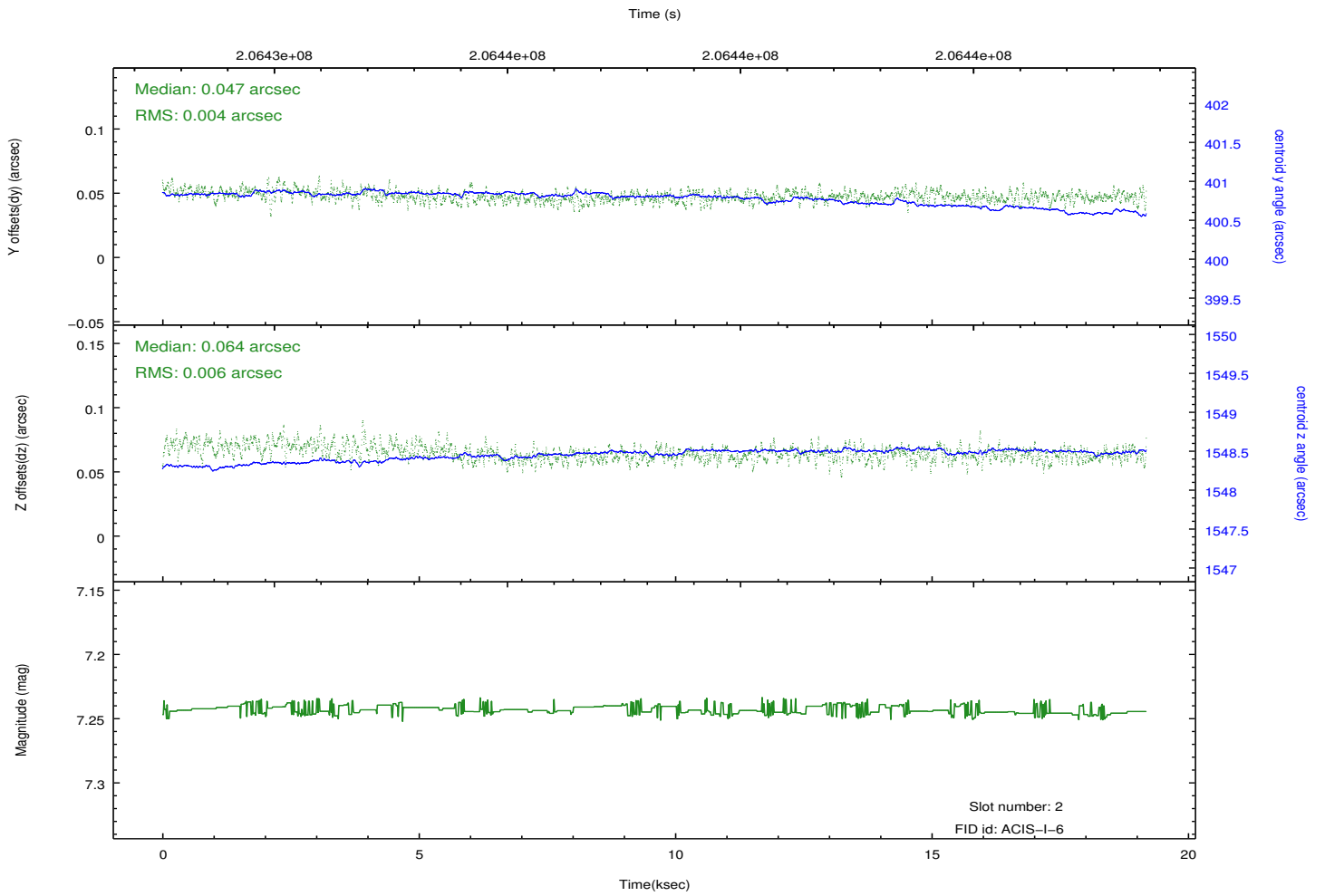
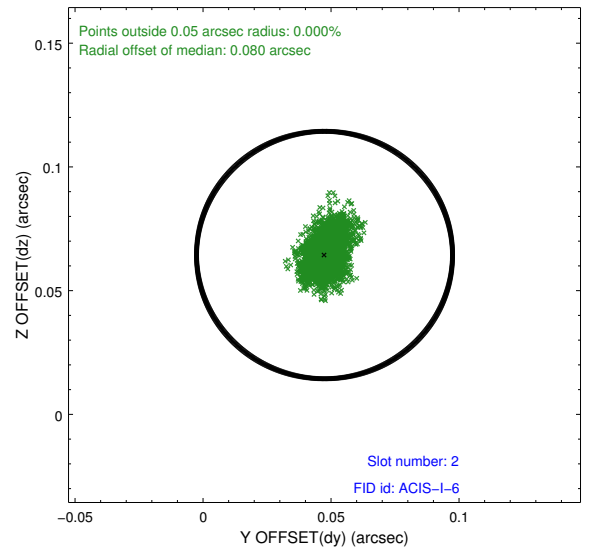
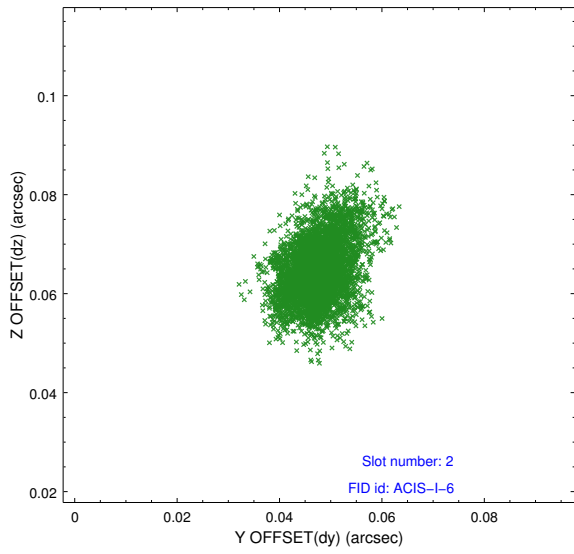
2.5.1 Slot 0



2.5.2 Slot 1



2.5.3 Slot 2



A Summary

A.1 Status

V&V Scientist	Beth Sundheim
V&V Date (YYYY-MM-DD)	2012.12.14
V&V Edition	1
V&V Disposition and Status	OK
V&V Charge Time	19.179

A.2 Comments