

V&V Reference Report

L2 ASCDS Version : 8.5

Observation 5044 - L2 Version 3
Chandra X-Ray Center

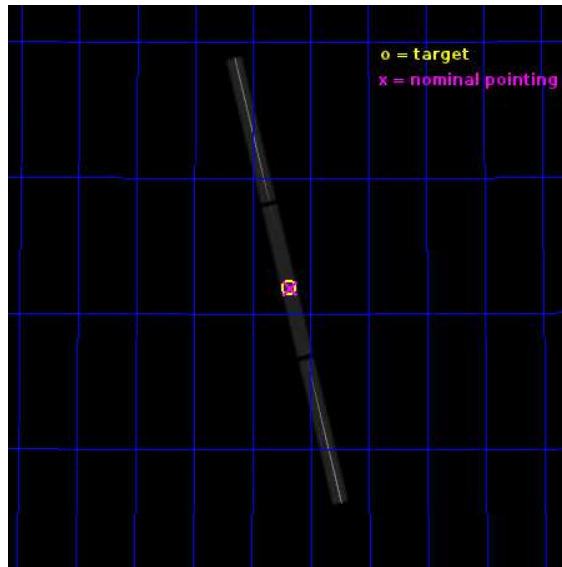
L2 Processing Date : Dec 6 2012

Contents

1	Front	2
2	OBI	3
2.1	OBI	3
2.1.1	Images	3
2.1.2	Parameters	4
2.1.3	Events	4
2.2	Compared Parameters	5
2.3	Aspect	6
2.4	Star Slots	9
2.4.1	Slot 3	9
2.4.2	Slot 4	10
2.4.3	Slot 5	11
2.4.4	Slot 6	12
2.4.5	Slot 7	13
2.5	FID Slots	14
2.5.1	Slot 0	14
2.5.2	Slot 1	15
2.5.3	Slot 2	16
3	Gratings	17
3.1	LETG Arm	17
A	Summary	19
A.1	Status	19
A.2	Comments	19

1 Front

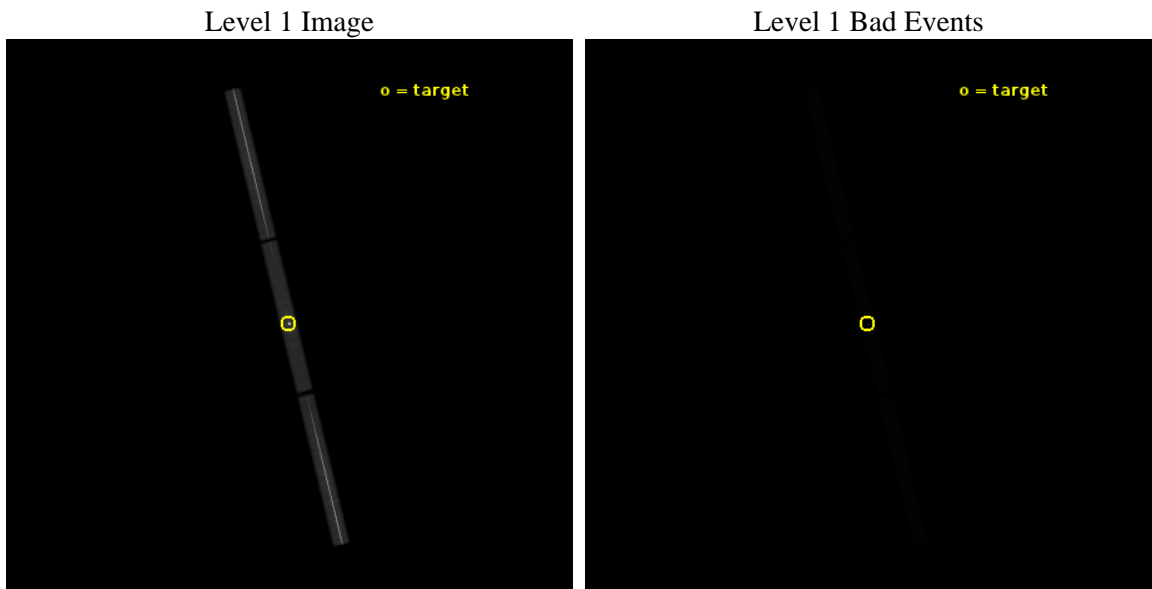
seq_num	290317	Sequence number
obs_id	5044	Observation id
title	AO5 Calibration Observations of HZ43	Proposal title
observer	Dr. CXC Calibration	Principal investigator
object	HZ43	Source name
ra_targ	199.092083	Observer's specified target RA [deg]
dec_targ	29.099	Observer's specified target Dec [deg]
ra_nom	199.09064197383	Nominal RA [deg]
dec_nom	29.094421463445	Nominal Dec [deg]
roll_nom	256.19411167236	Nominal Roll [deg]
revision	3	Processing version of data
ontime	19853.482131749	[s]
livetime	19665.051532833	Ontime multiplied by DTCOR
l2events	1829270	Number of level 2 events



2 OBI

2.1 OBI

2.1.1 Images



2.1.2 Parameters

obi_num	0	Obi number	sched_exp_time	19693.000000	[s] Scheduled observation exposure time
ascdsver	8.5	Processing system revision	ontime	19853.482131749	[s]
caldsver	4.5.4	 	l1events	2310260	Number of level 1 events
date	2012-12-06T10:04:29	Date and time of file creation			
revision	3	Processing version of data			

2.1.3 Events

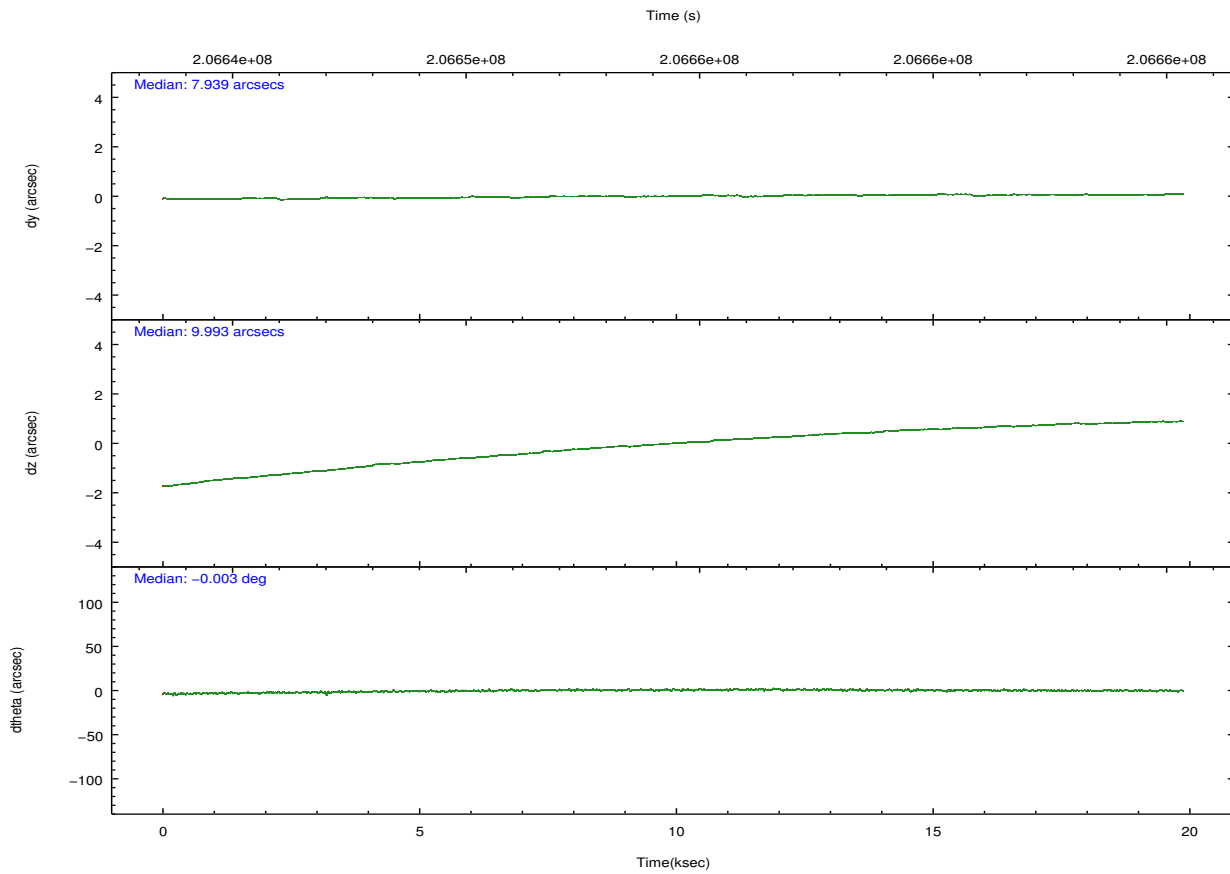
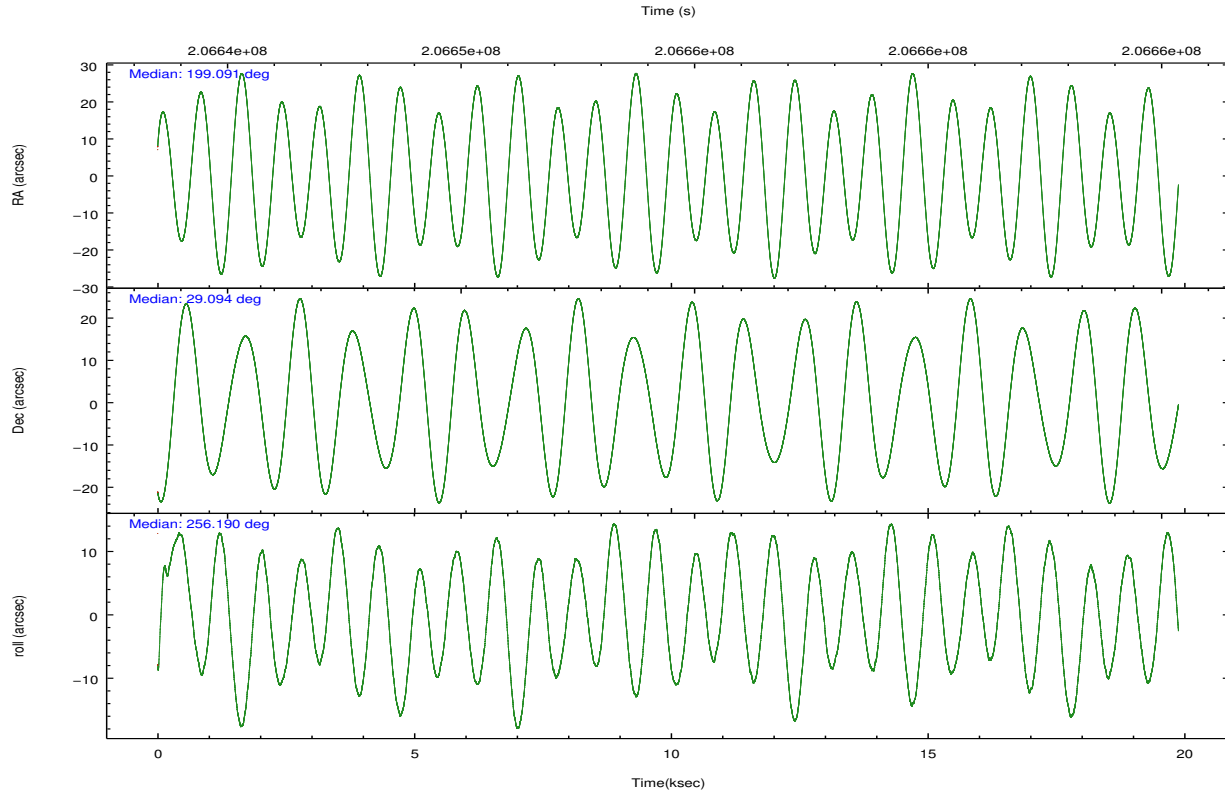
Level 1 Events

	segment 1	segment 2	segment 3
level 1 events	802942	689202	818116
rejected events	21837	21238	22465
rejected %	2%	3%	2%

2.2 Compared Parameters

Parameter	Planned	Actual	Parameter	Planned	Actual
Instrument	HRC	HRC	Obspar format version number	7	7
Detector	HRC-S	HRC-S	Obspar file type	PREDICTED	ACTUAL
Grating	LETG	LETG	Obspar update status	NONE	UPDATED
Data mode	OBSERVING	OBSERVING			
Observation mode	POINTING	POINTING			
[deg] Pointing RA	199.079974	199.0906419738263			
[deg] Pointing Dec	29.121529	29.09442146344473			
[deg] Pointing Roll	256.131971	256.1941116723636			
[s] Window start time (MET)	202435264.184000	202435264.184000			
[s] Window stop time (MET)	207619264.184000	207619264.184000			
[mm] SIM focus pos	-1.429586	-1.428180813131781			
[mm] SIM defocus	0.1037507710433287	0.1051558262725154			
[mm] SIM translation stage pos	250.455976	250.4635187648994			
[mm] SIM translation stage offset	0	-0.007540371344731511			
[s] Observation start time (MET)	206644678.184000	206644303.1732			
Observation start date	2004-07-19T17:16:54	2004-07-19T17:11:43			
[s] Observation end time (MET)	206664371.184000	206665204.97412			
Observation end date	2004-07-19T22:45:07	2004-07-19T23:00:04			

2.3 Aspect

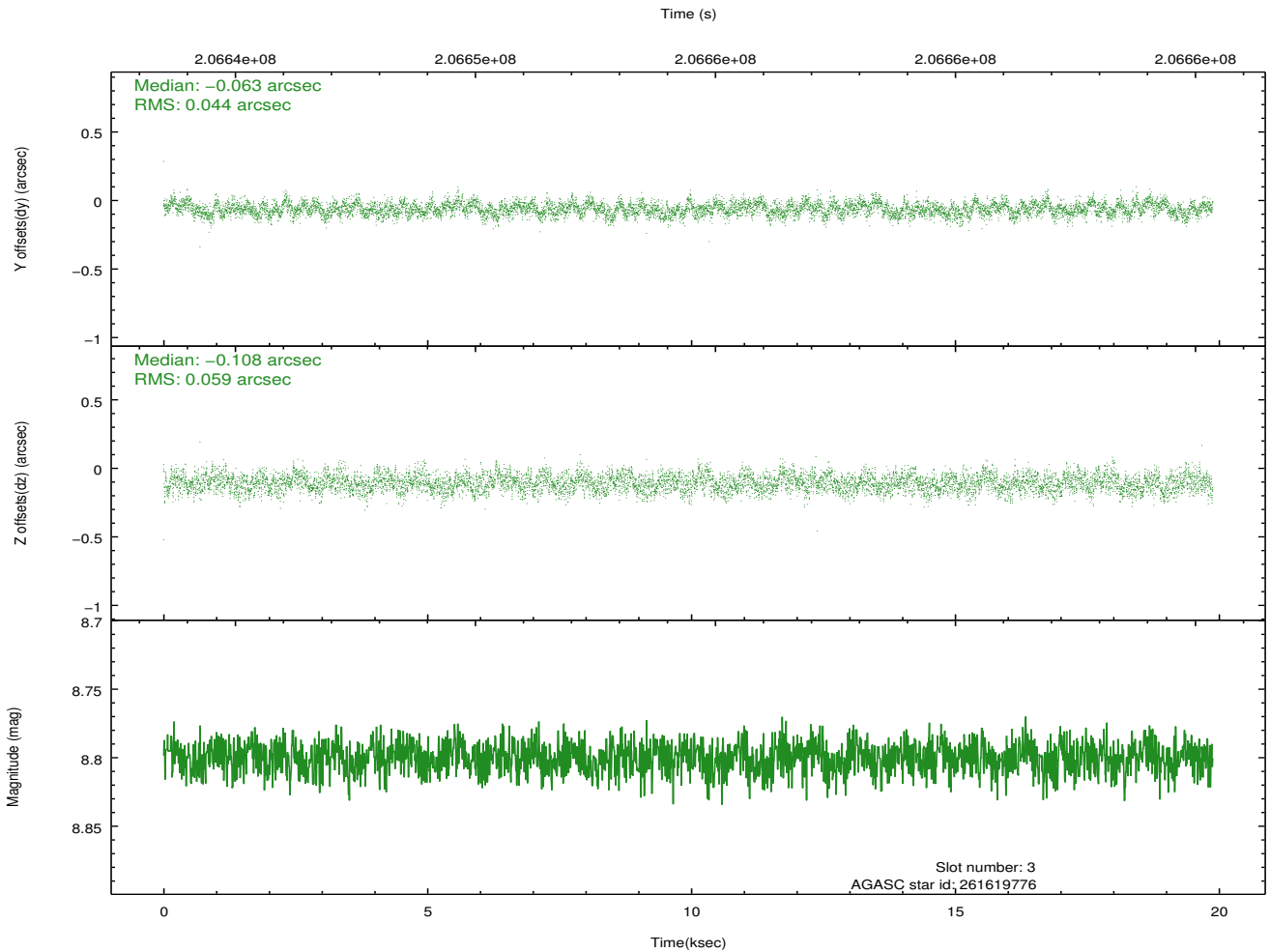
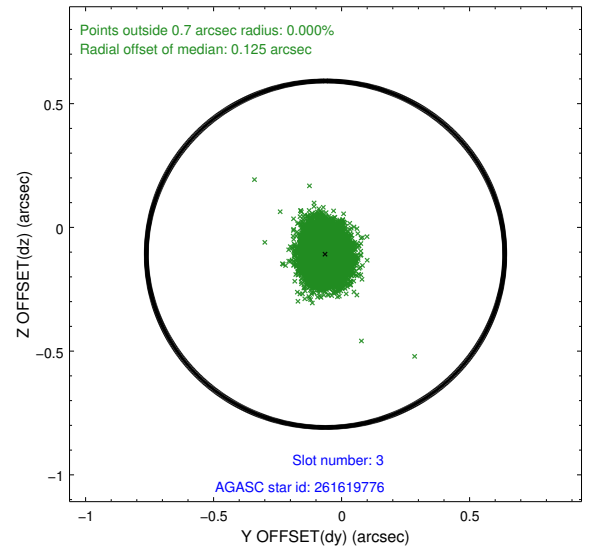
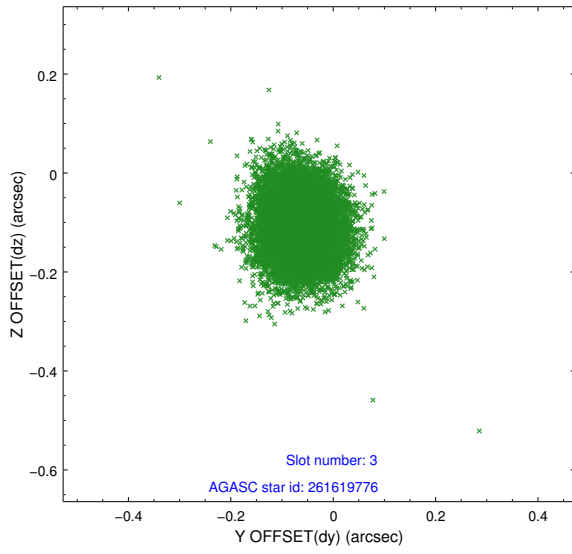


Slot Statistics

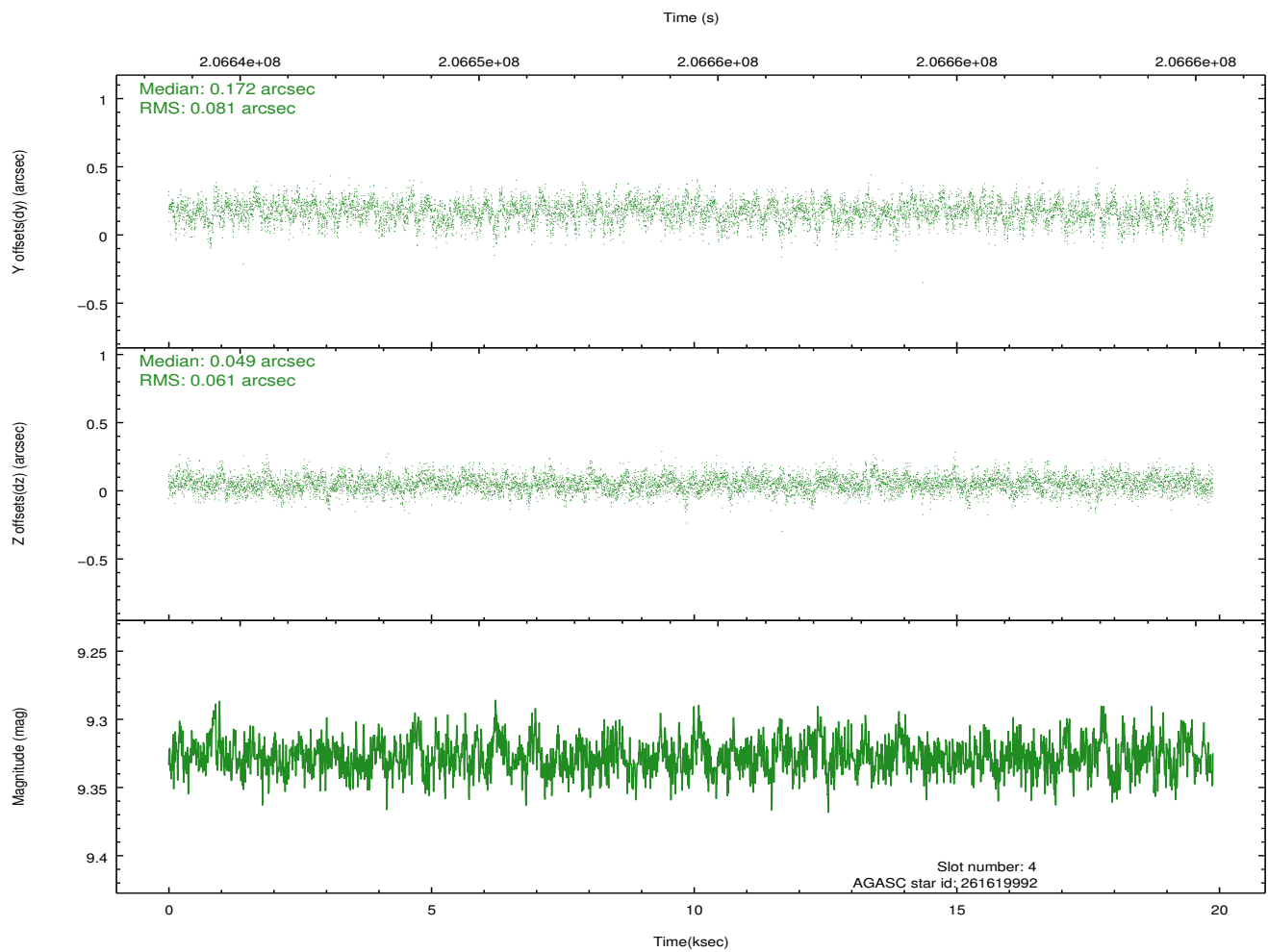
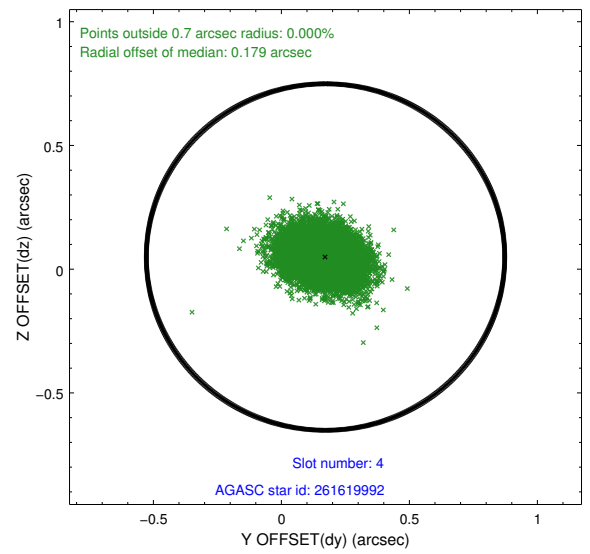
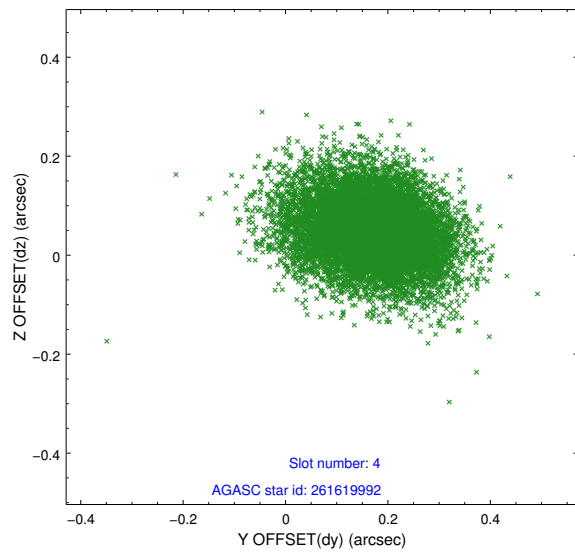
slot	status	id	mag	n_pts	med_dy	med_dz	dr1	dr2	ra	dec	mean_y	mean_z
0	FID	HRC-S-1	6.98	4850	0.144	-0.176	0.014	0.058	0.000000	0.000000	-1162.10	-458.49
1	FID	HRC-S-2	6.97	4849	0.143	-0.112	0.005	0.009	0.000000	0.000000	1237.34	-451.19
2	FID	HRC-S-3	6.99	4850	0.103	-0.014	0.015	0.062	0.000000	0.000000	-1164.59	571.09
3	GUIDE	261619776	8.80	9693	-0.063	-0.108	0.078	0.124	198.654383	29.401174	-659.45	-1537.56
4	GUIDE	261619992	9.33	9692	0.172	0.049	0.106	0.178	198.395553	28.647634	2168.94	-1691.76
5	GUIDE	261623040	9.12	9692	-0.135	0.035	0.081	0.130	198.792686	29.757643	-2008.78	-1421.10
6	GUIDE	261623624	9.12	9690	0.123	0.064	0.083	0.133	199.611555	28.454113	1925.69	2208.72
7	GUIDE	261629720	8.10	9697	-0.095	-0.041	0.064	0.099	199.236176	29.044452	151.46	544.00

2.4 Star Slots

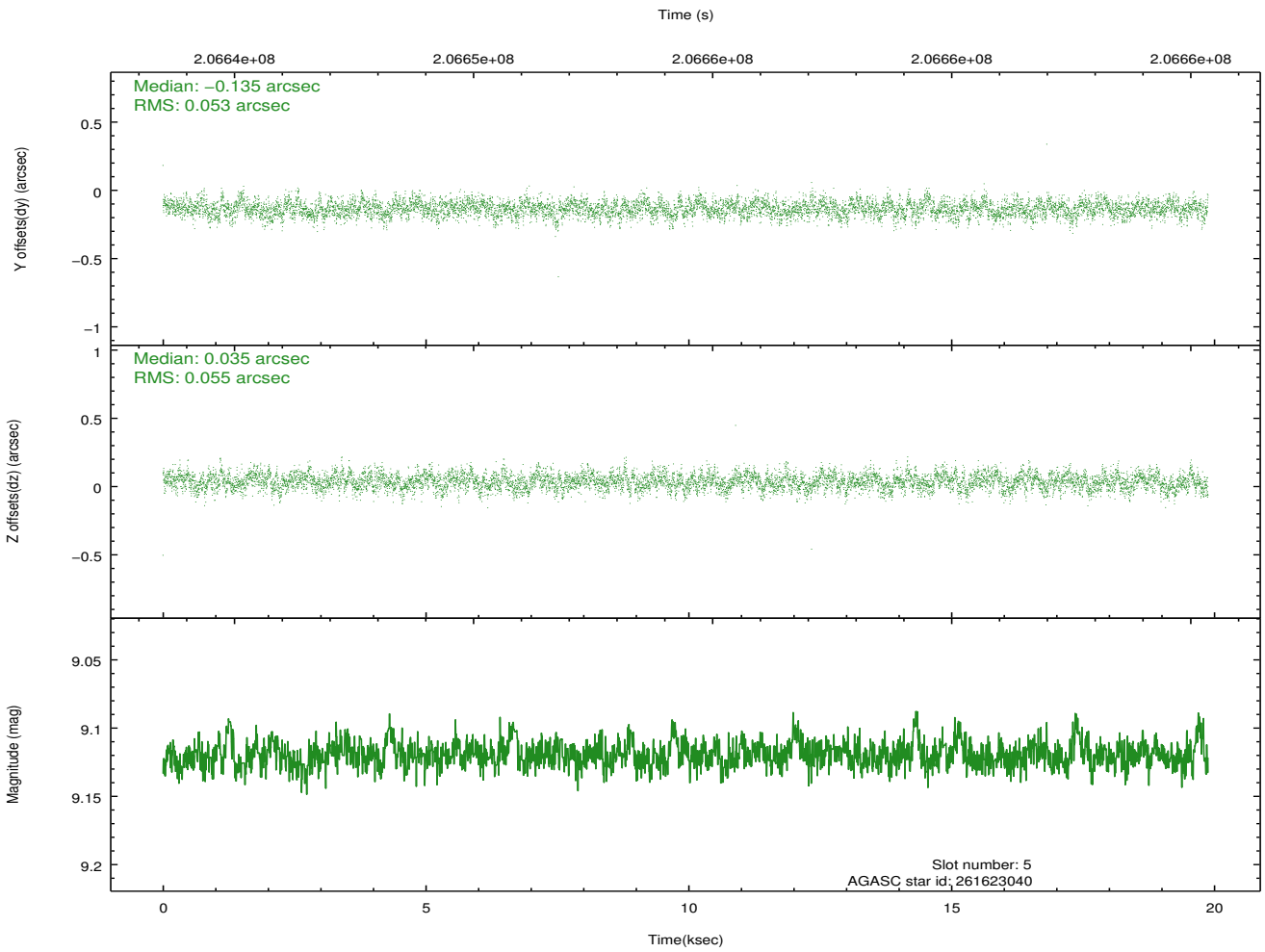
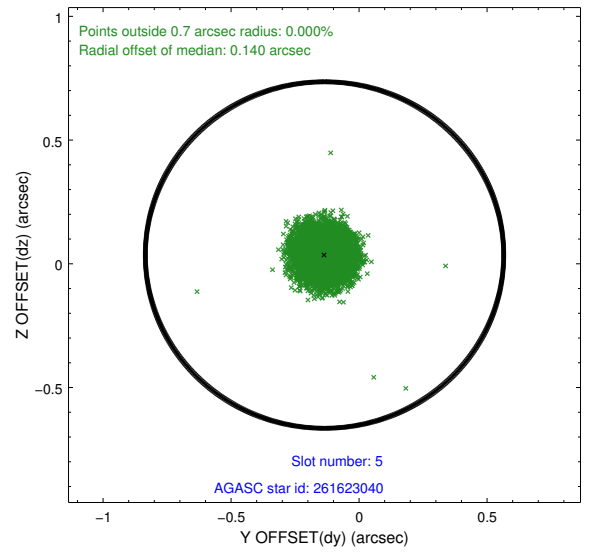
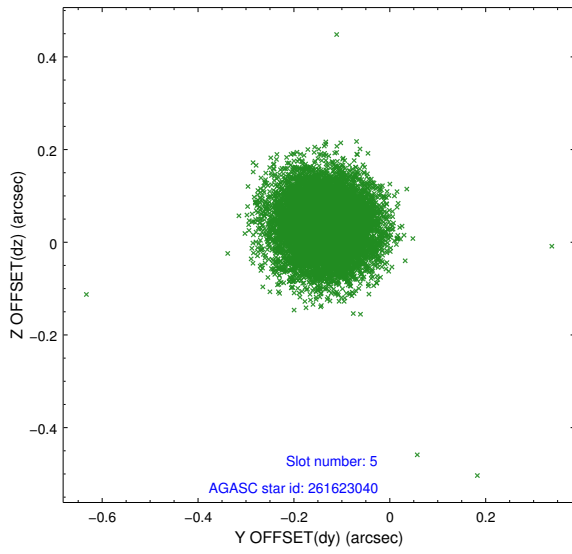
2.4.1 Slot 3



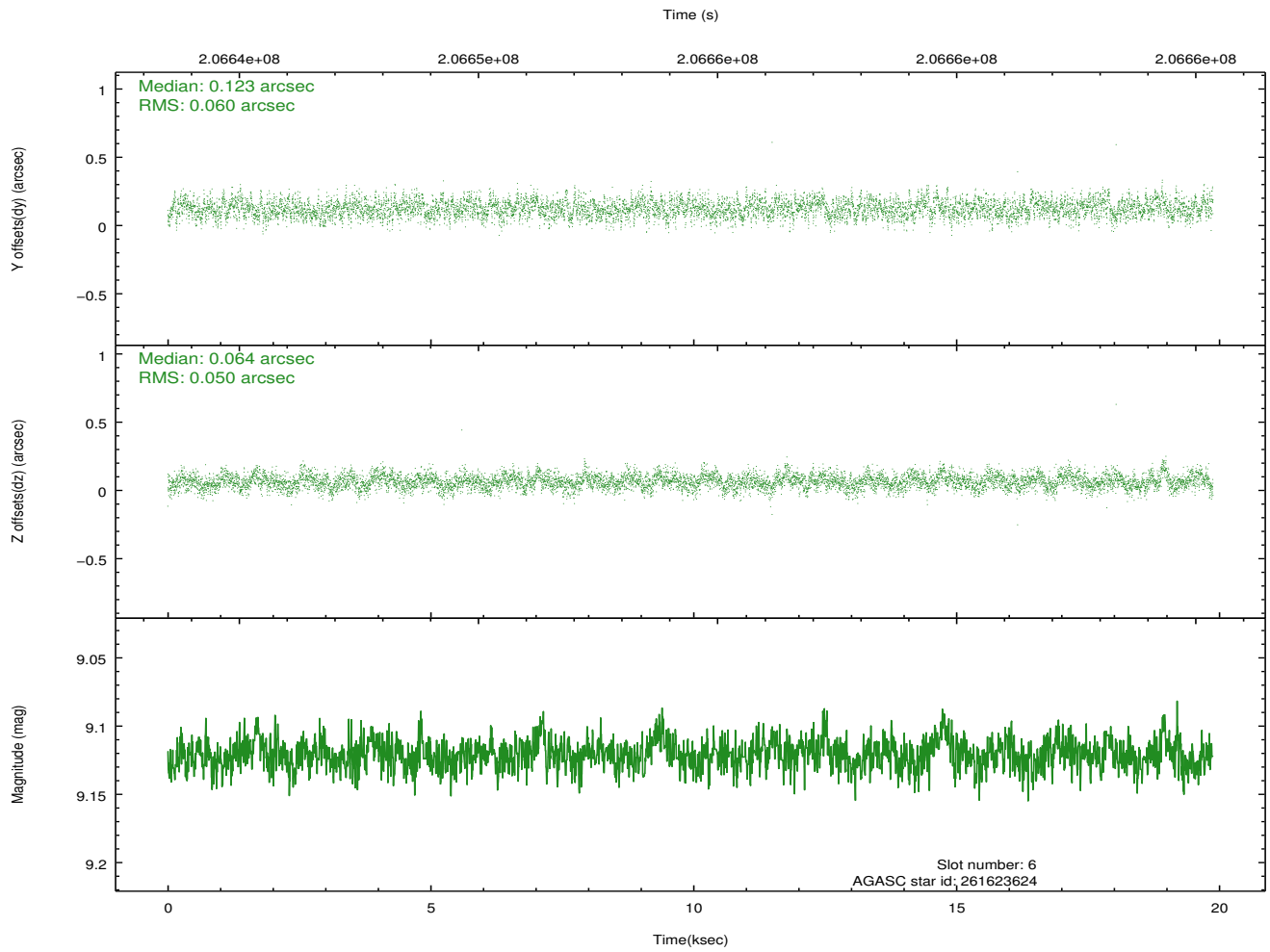
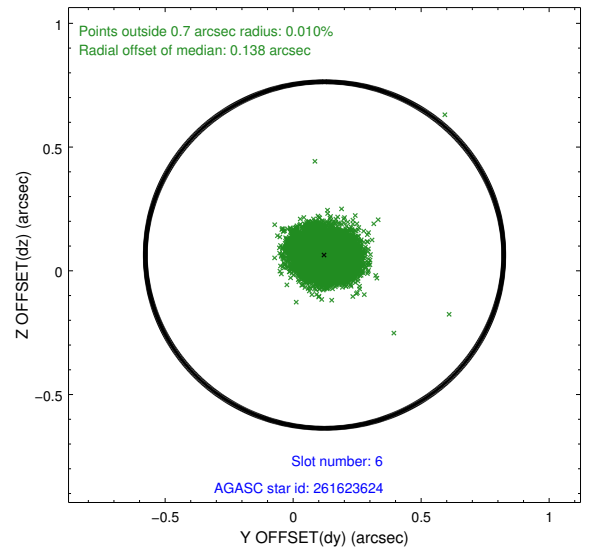
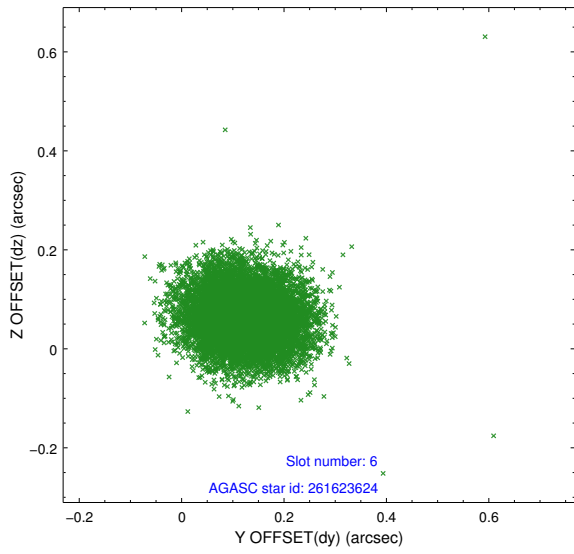
2.4.2 Slot 4



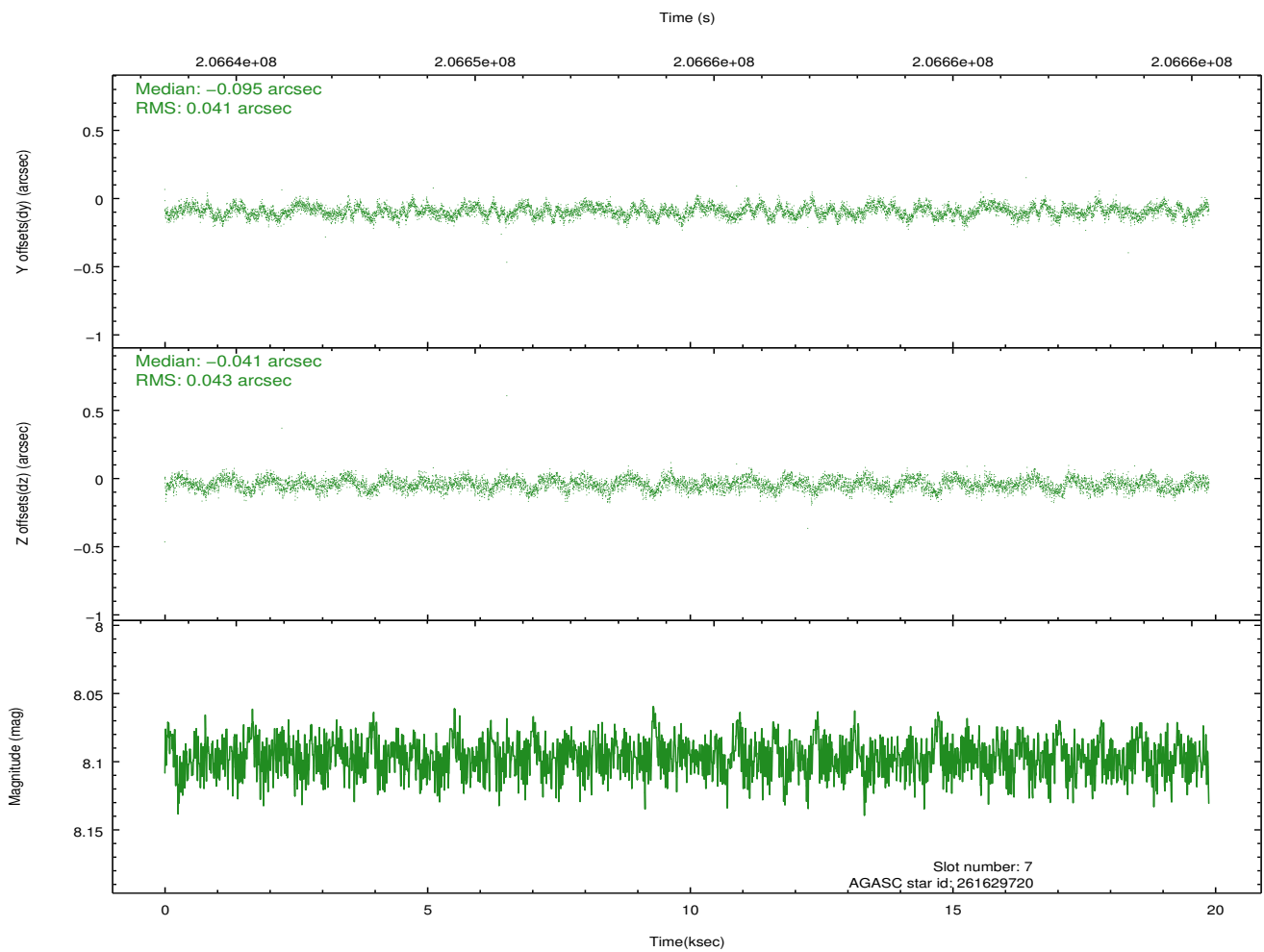
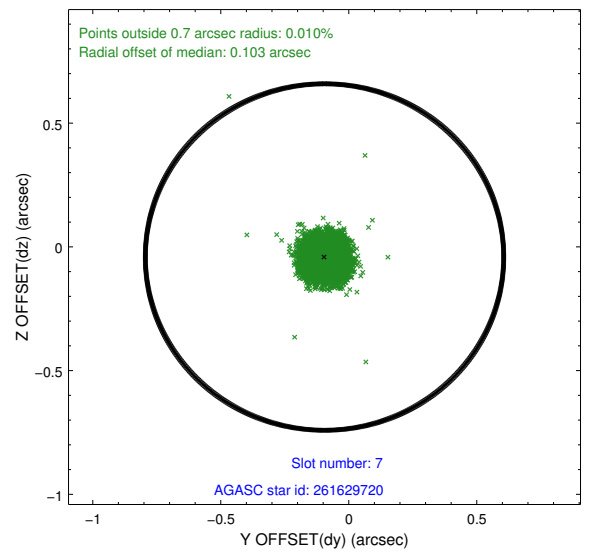
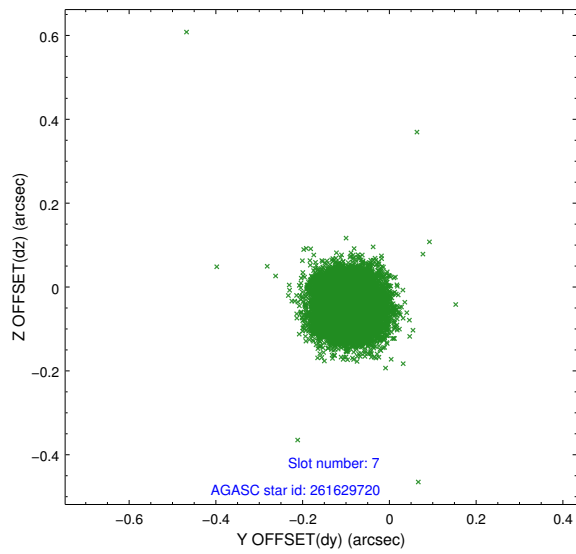
2.4.3 Slot 5



2.4.4 Slot 6

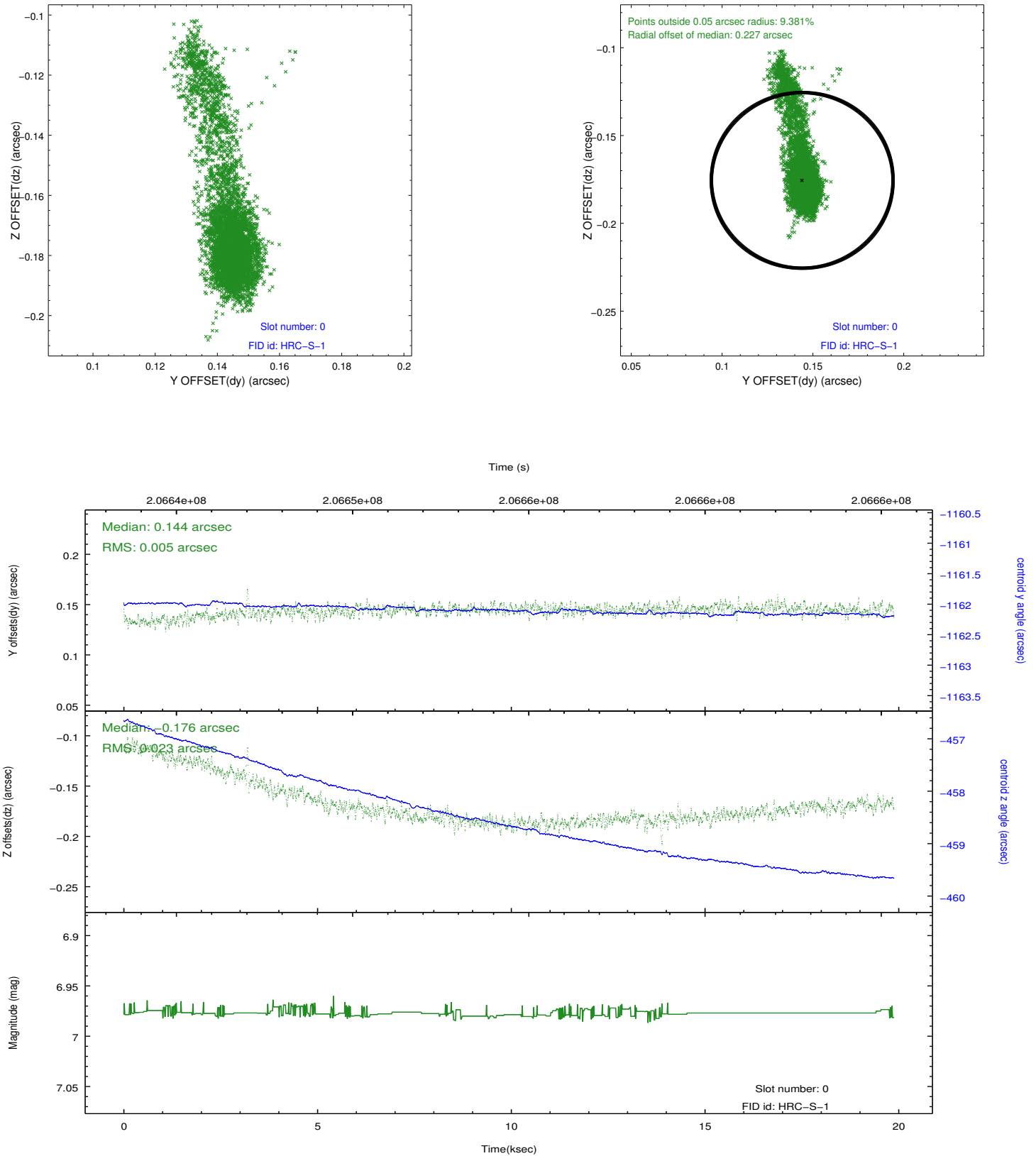


2.4.5 Slot 7

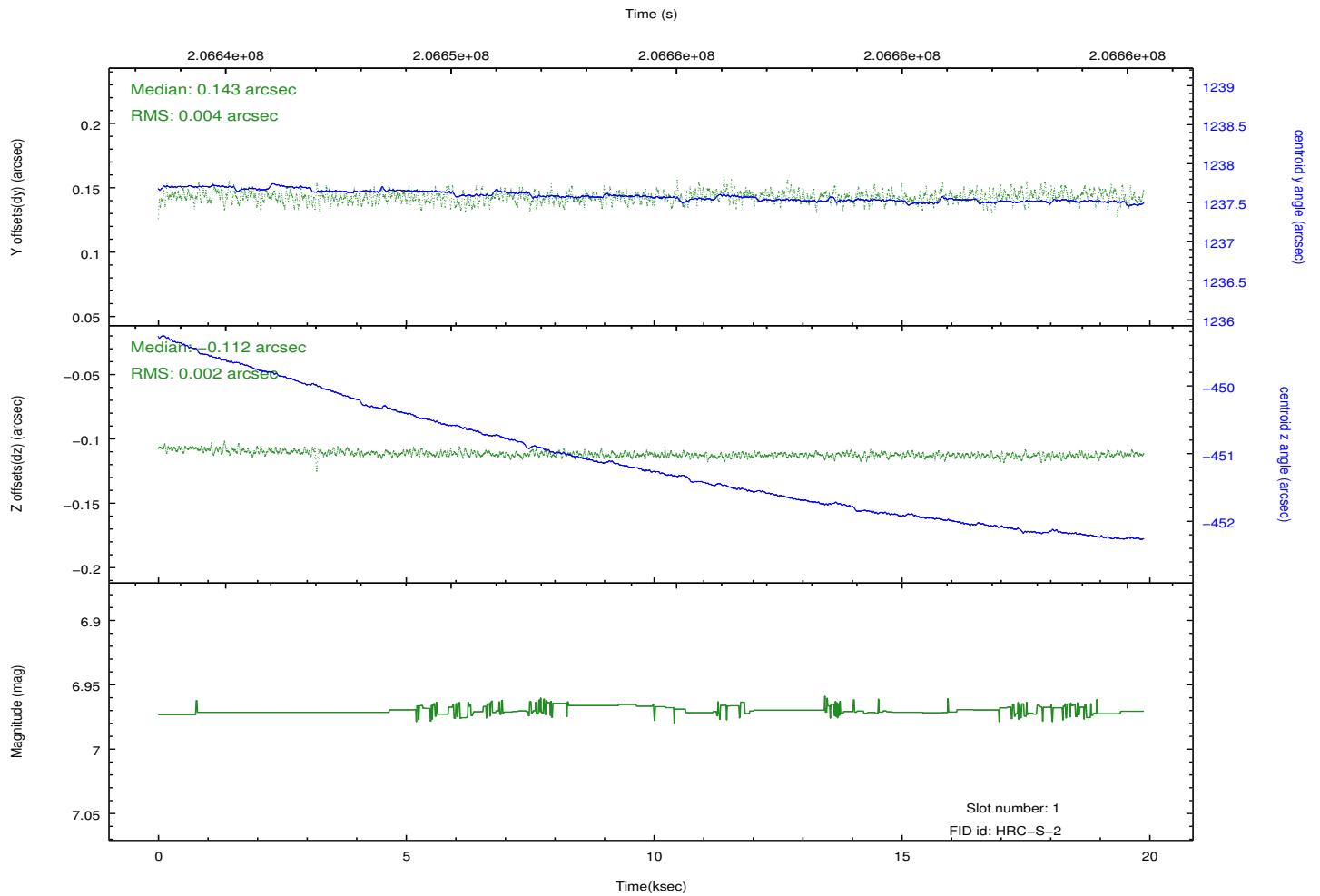
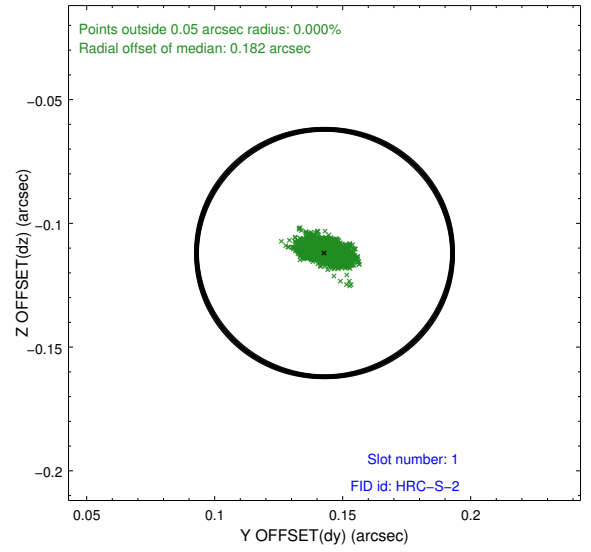
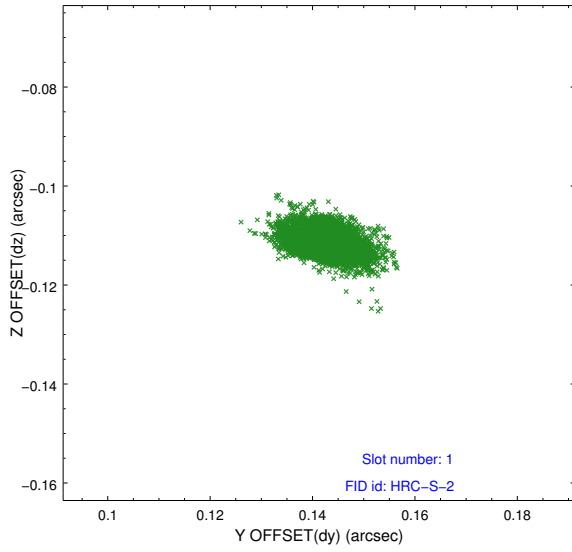


2.5 FID Slots

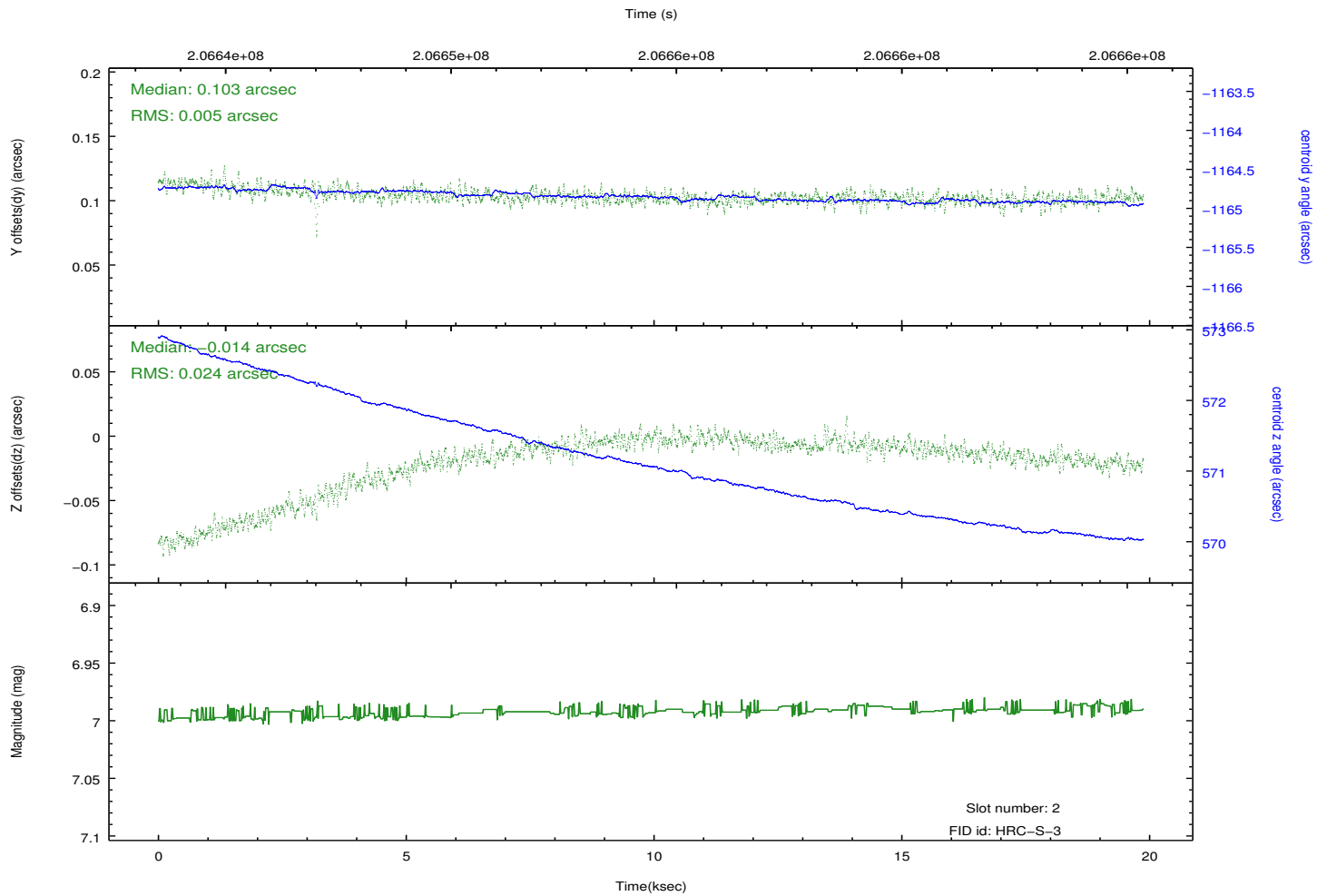
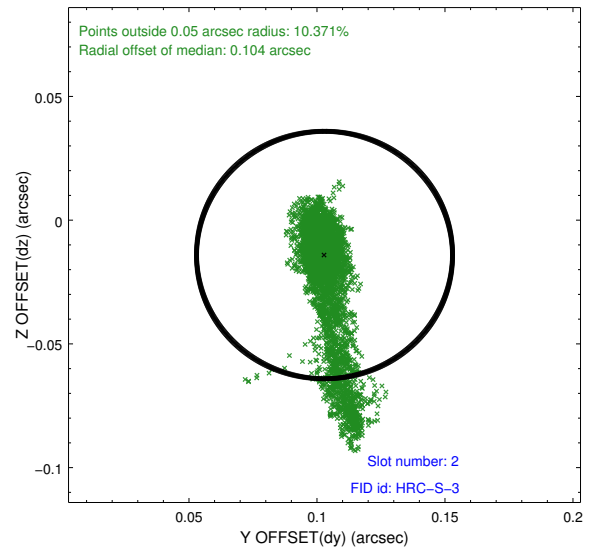
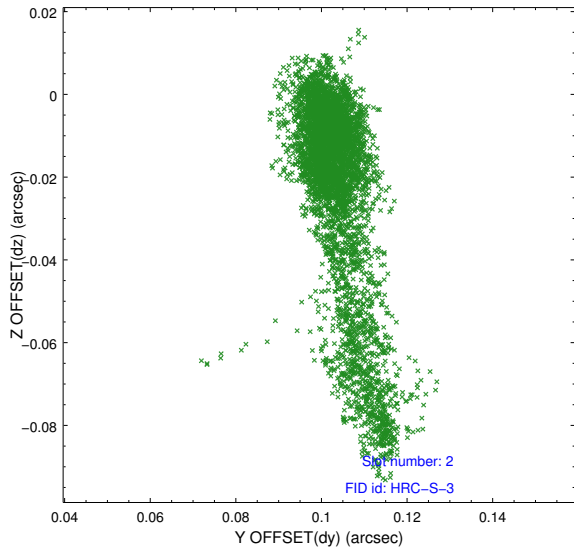
2.5.1 Slot 0



2.5.2 Slot 1

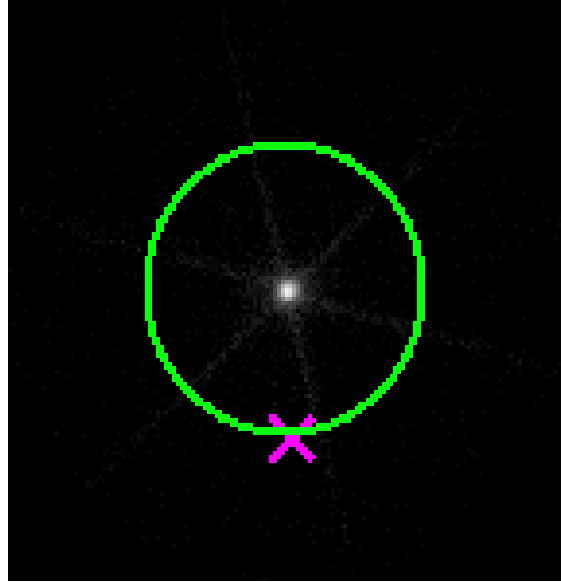


2.5.3 Slot 2

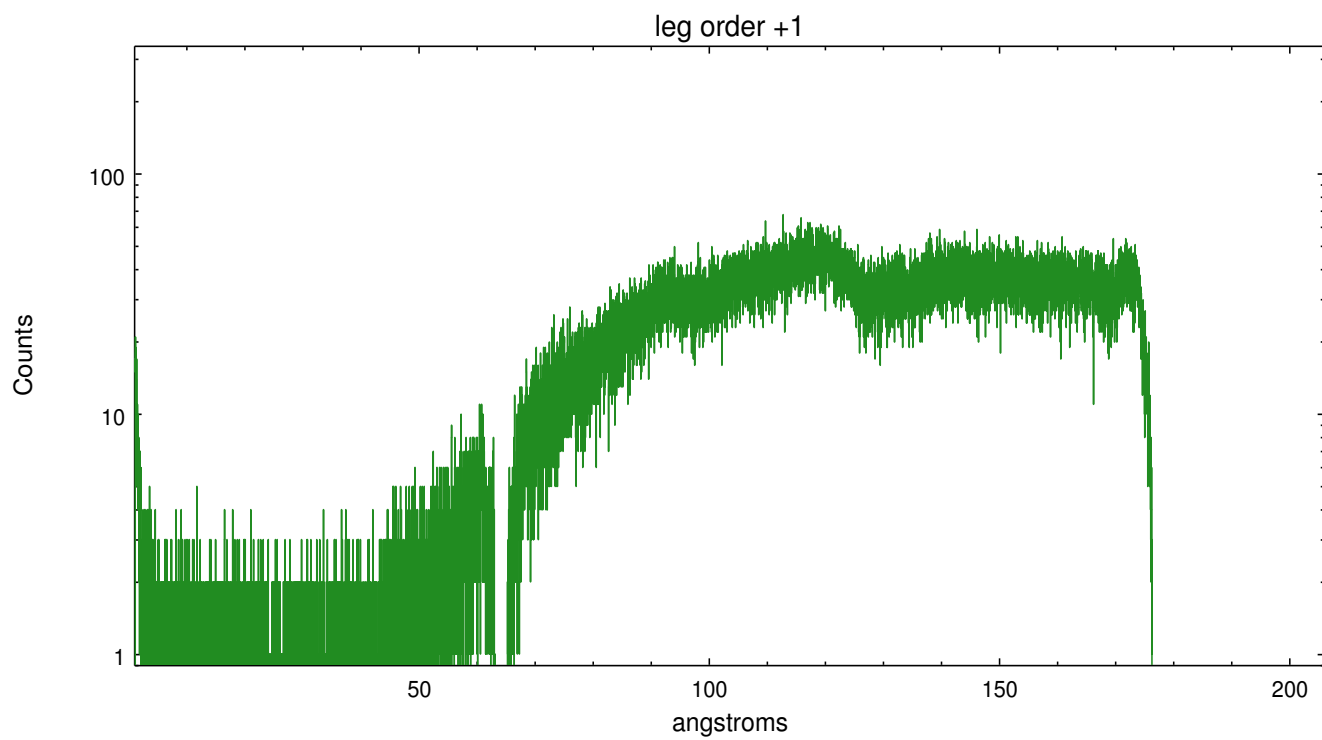
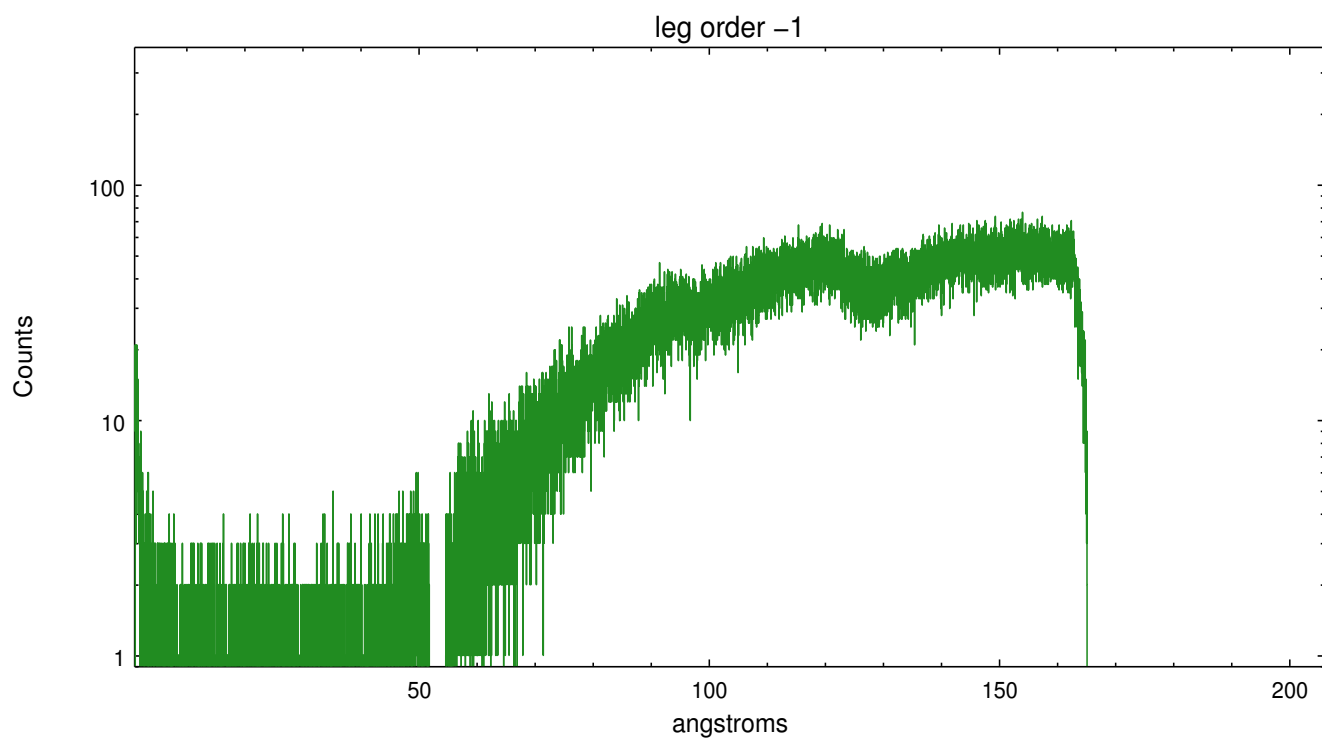


3 Gratings

3.1 LETG Arm



LETG Zero Order



A Summary

A.1 Status

V&V Scientist	Joy Nichols
V&V Date (YYYY-MM-DD)	2013.01.11
V&V Edition	1
V&V Disposition and Status	OK
V&V Charge Time	19.853

A.2 Comments