

# V&V Reference Report

## L2 ASCDS Version : 8.4.5

Observation 544 - L2 Version 4  
Chandra X-Ray Center

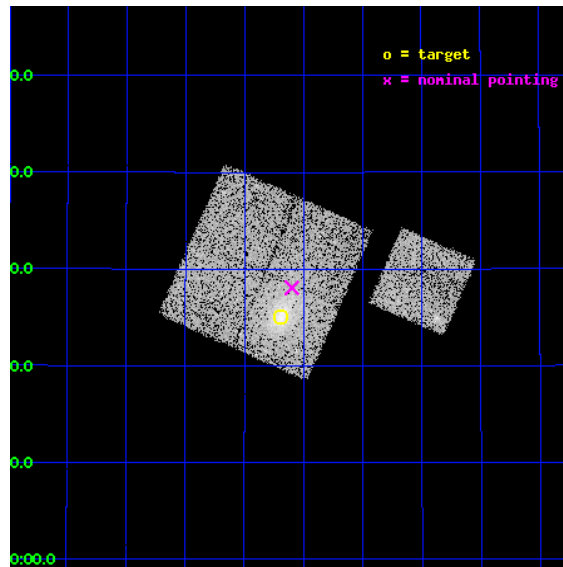
L2 Processing Date : Aug 24 2012

## Contents

<b>1</b>	<b>Front</b>	<b>2</b>
<b>2</b>	<b>OBI</b>	<b>3</b>
2.1	OBI . . . . .	3
2.1.1	Images . . . . .	3
2.1.2	Bias . . . . .	3
2.1.3	Parameters . . . . .	4
2.1.4	Events . . . . .	4
2.2	Compared Parameters . . . . .	5
2.3	Aspect . . . . .	6
2.4	Star Slots . . . . .	9
2.4.1	Slot 3 . . . . .	9
2.4.2	Slot 4 . . . . .	10
2.4.3	Slot 5 . . . . .	11
2.4.4	Slot 6 . . . . .	12
2.4.5	Slot 7 . . . . .	13
2.5	FID Slots . . . . .	14
2.5.1	Slot 0 . . . . .	14
2.5.2	Slot 1 . . . . .	15
2.5.3	Slot 2 . . . . .	16
<b>A</b>	<b>Summary</b>	<b>17</b>
A.1	Status . . . . .	17
A.2	Comments . . . . .	17

# 1 Front

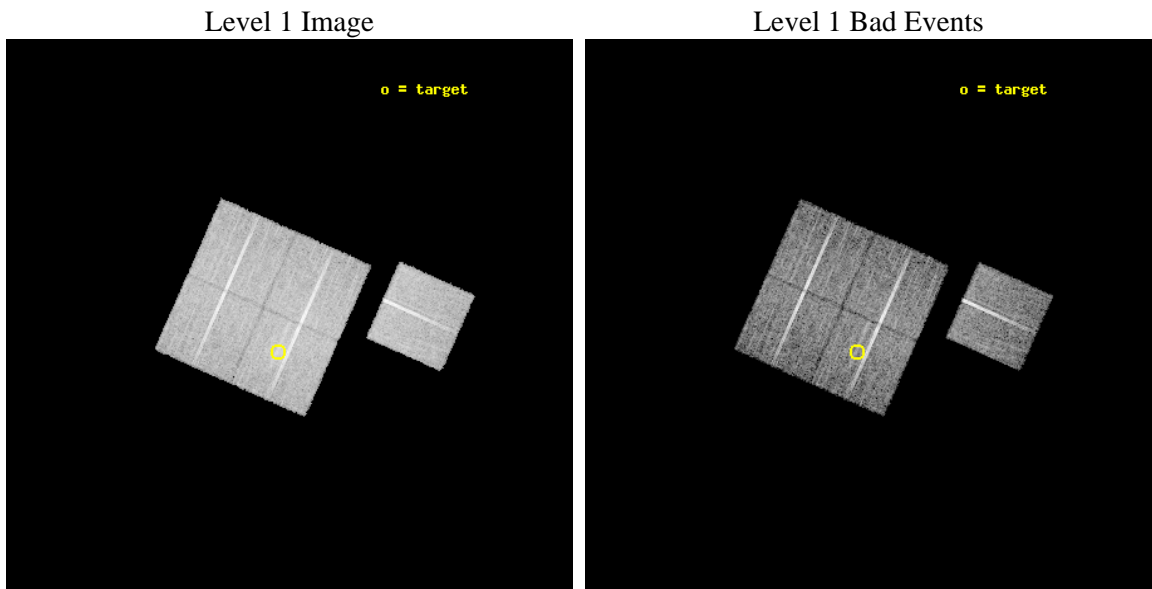
seq_num	800052	Sequence number
obs_id	544	Observation id
title	DETERMINATION OF H0/Q0	Proposal title
observer	DR. LEON VANSPEYBROECK	Principal investigator
object	A2111	Source name
dtcycle	0	&#160
cycle	P	events from which exps? Prim/Second/Both
ra_targ	234.924167	Observer's specified target RA [deg]
dec_targ	34.417	Observer's specified target Dec [deg]
ra_nom	234.89959117674	Nominal RA [deg]
dec_nom	34.467809401644	Nominal Dec [deg]
roll_nom	113.96716831895	Nominal Roll [deg]
revision	4	Processing version of data
ontime	10432.000009701	Sum of GTIs [s]
livetime	10299.903744182	Livetime [s]
ontime0	10432.000009701	Sum of GTIs [s]
ontime1	10432.000009701	Sum of GTIs [s]
ontime2	10432.000009701	Sum of GTIs [s]
ontime3	10432.000009701	Sum of GTIs [s]
ontime6	10432.000009701	Sum of GTIs [s]
l2events	40128	Number of level 2 events



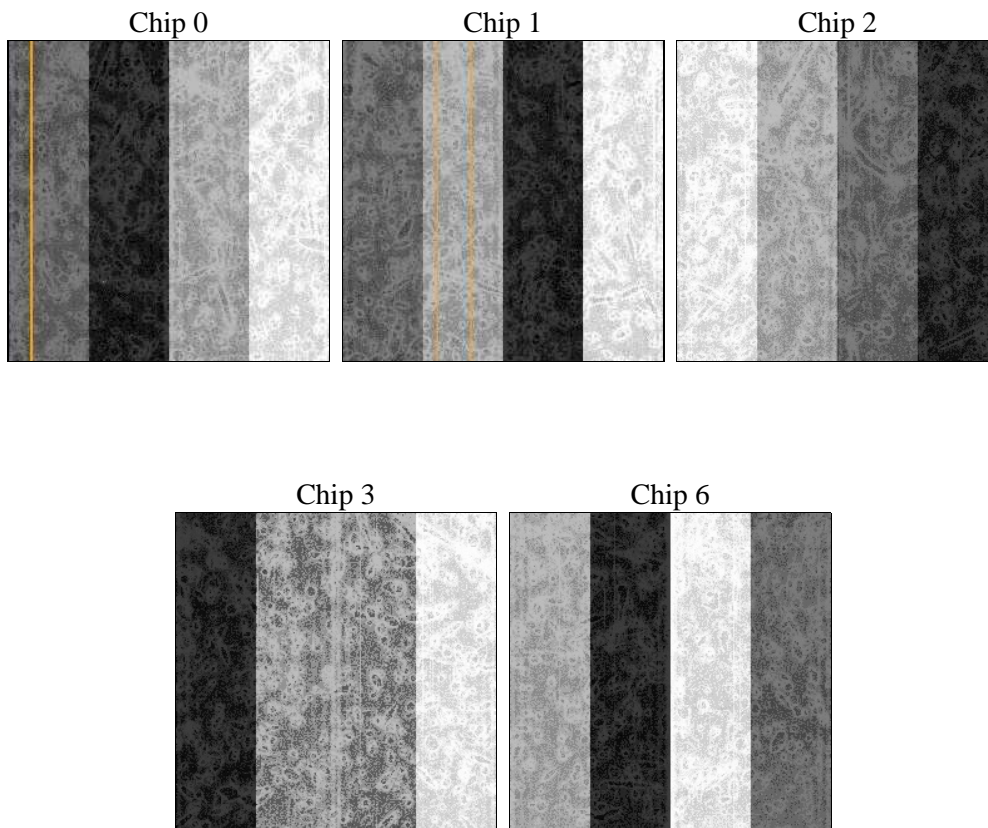
## 2 OBI

### 2.1 OBI

#### 2.1.1 Images



#### 2.1.2 Bias



### 2.1.3 Parameters

obi_num	0	Obi number	sched_exp_time	10000.000000	[s] Scheduled observation exposure time
ascdsver	8.4.5	Processing system revision	ontime	10432.000009701	Sum of GTIs [s]
caldsver	4.5.1.1	&#160	ontime0	10432.000009701	Sum of GTIs [s]
date	2012-08-24T13:53:44	Date and time of file creation	ontime1	10432.000009701	Sum of GTIs [s]
revision	4	Processing version of data	ontime2	10432.000009701	Sum of GTIs [s]
			ontime3	10432.000009701	Sum of GTIs [s]
			ontime6	10432.000009701	Sum of GTIs [s]
			l1events	442048	Number of level 1 events

### 2.1.4 Events

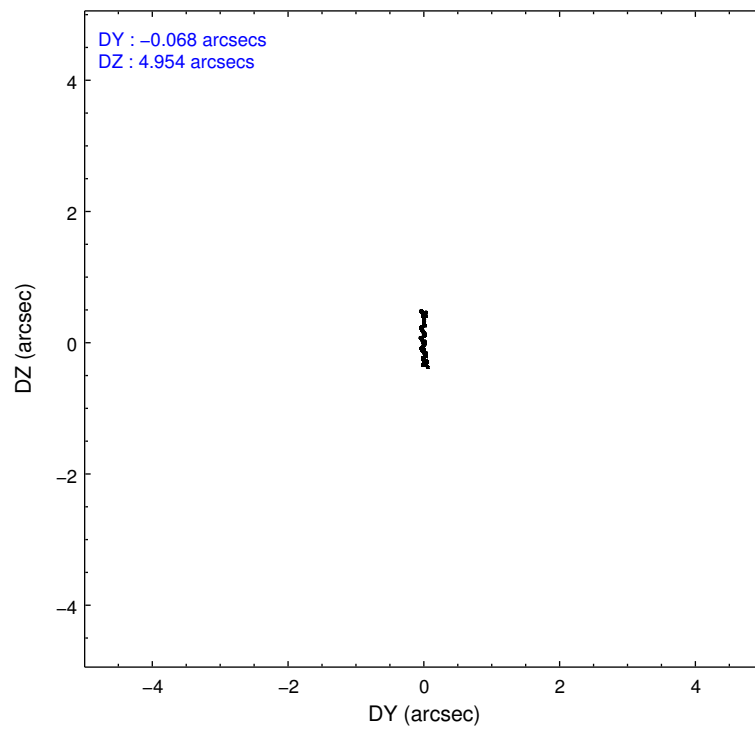
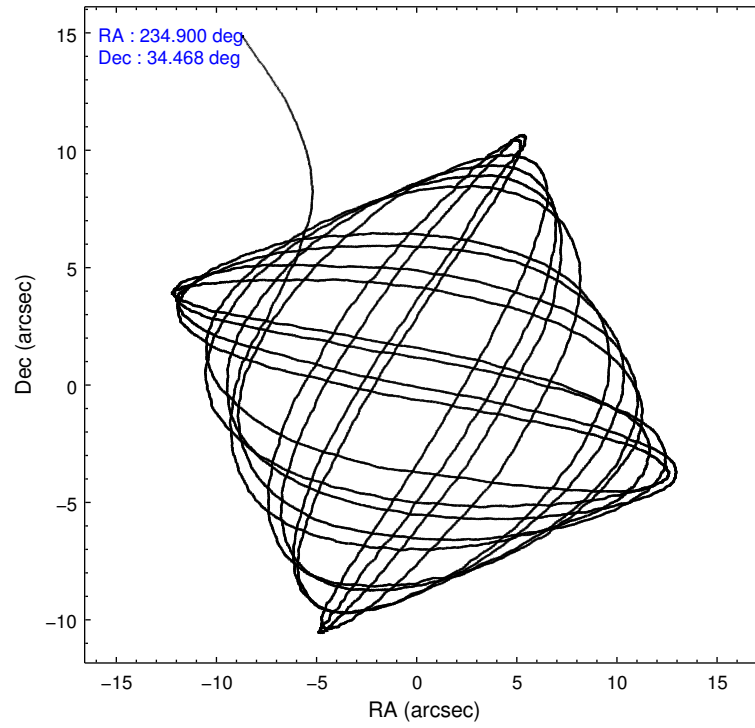
	ccd 0	ccd 1	ccd 2	ccd 3	ccd 6
level 1 events	86014	83435	89495	92999	90105
rejected events	77849	74540	81201	79826	82076
rejected %	90%	89%	90%	85%	91%

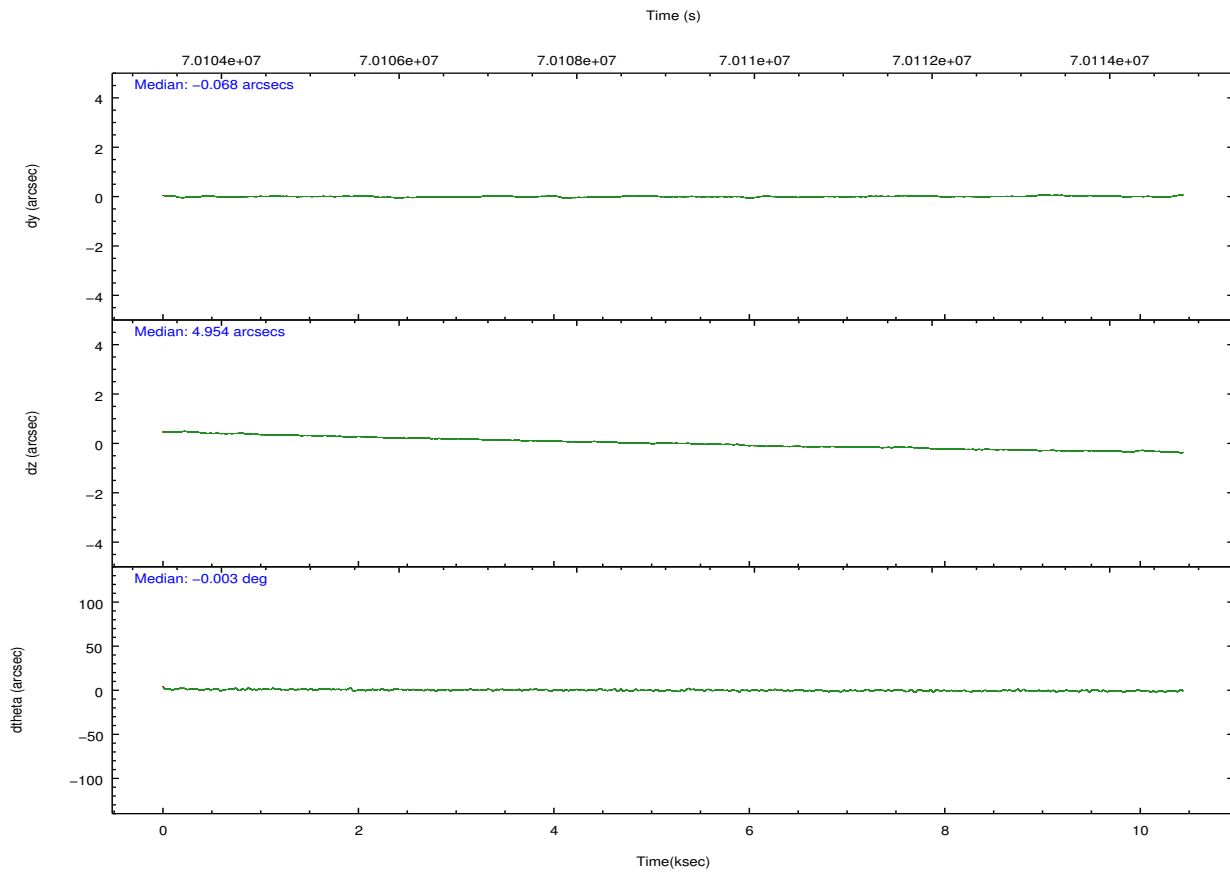
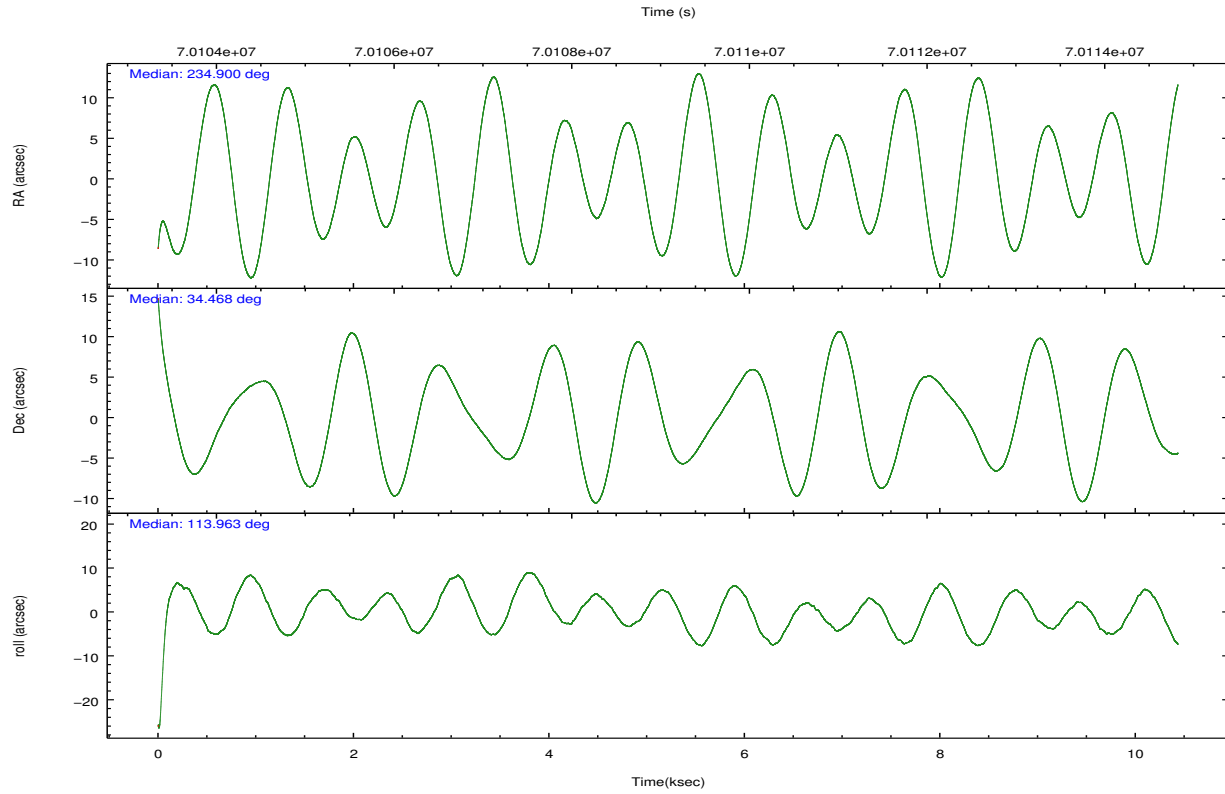
	ccd 0	ccd 1	ccd 2	ccd 3	ccd 6
grade 0 events	4112	4299	4399	8658	3971
	4%	5%	4%	9%	4%
grade 1 events	39	32	51	74	31
	0%	0%	0%	0%	0%
grade 2 events	1928	2019	1938	2221	1853
	2%	2%	2%	2%	2%
grade 3 events	954	1052	978	1080	939
	1%	1%	1%	1%	1%
grade 4 events	957	1099	846	1025	963
	1%	1%	0%	1%	1%
grade 5 events	2768	2994	2694	2985	3267
	3%	3%	3%	3%	3%
grade 6 events	1667	1931	1488	1641	1737
	1%	2%	1%	1%	1%
grade 7 events	73589	70009	77101	75315	77344
	85%	83%	86%	80%	85%

## 2.2 Compared Parameters

Parameter	Planned	Actual	Parameter	Planned	Actual
Instrument	ACIS	ACIS	Obspar format version number	7	7
Detector	ACIS-01236	ACIS-01236	Obspar file type	PREDICTED	ACTUAL
Grating	NONE	NONE	Obspar update status	NONE	UPDATED
Data mode	FAINT	FAINT	Number of optional ACIS chips dropped	0	0
Observation mode	POINTING	POINTING	On-chip summing requested	N	N
[deg] Pointing RA	234.926580	234.8995911767438	Subarray requested	NONE	NONE
[deg] Pointing Dec	34.451378	34.46780940164353	Alternating exposures requested	N	N
[deg] Pointing Roll	113.743236	113.9671683189527	[s] Primary exposure time	0.000000	3.2
[mm] SIM focus pos	-0.782348	-0.7809083437167272			
[mm] SIM defocus	0	0.001439871863259334			
[mm] SIM translation stage pos	-225.840463	-225.8433433320239			
[mm] SIM translation stage offset	-7.752	-7.749109670905796			
[s] Observation start time (MET)	70104301.184000	70102040.67037199			
Observation start date	2000-03-22T09:23:57	2000-03-22T08:47:20			
[s] Observation end time (MET)	70114301.184000	70114757.33333699			
Observation end date	2000-03-22T12:10:37	2000-03-22T12:19:17			
Read mode	TIMED	TIMED			

## 2.3 Aspect



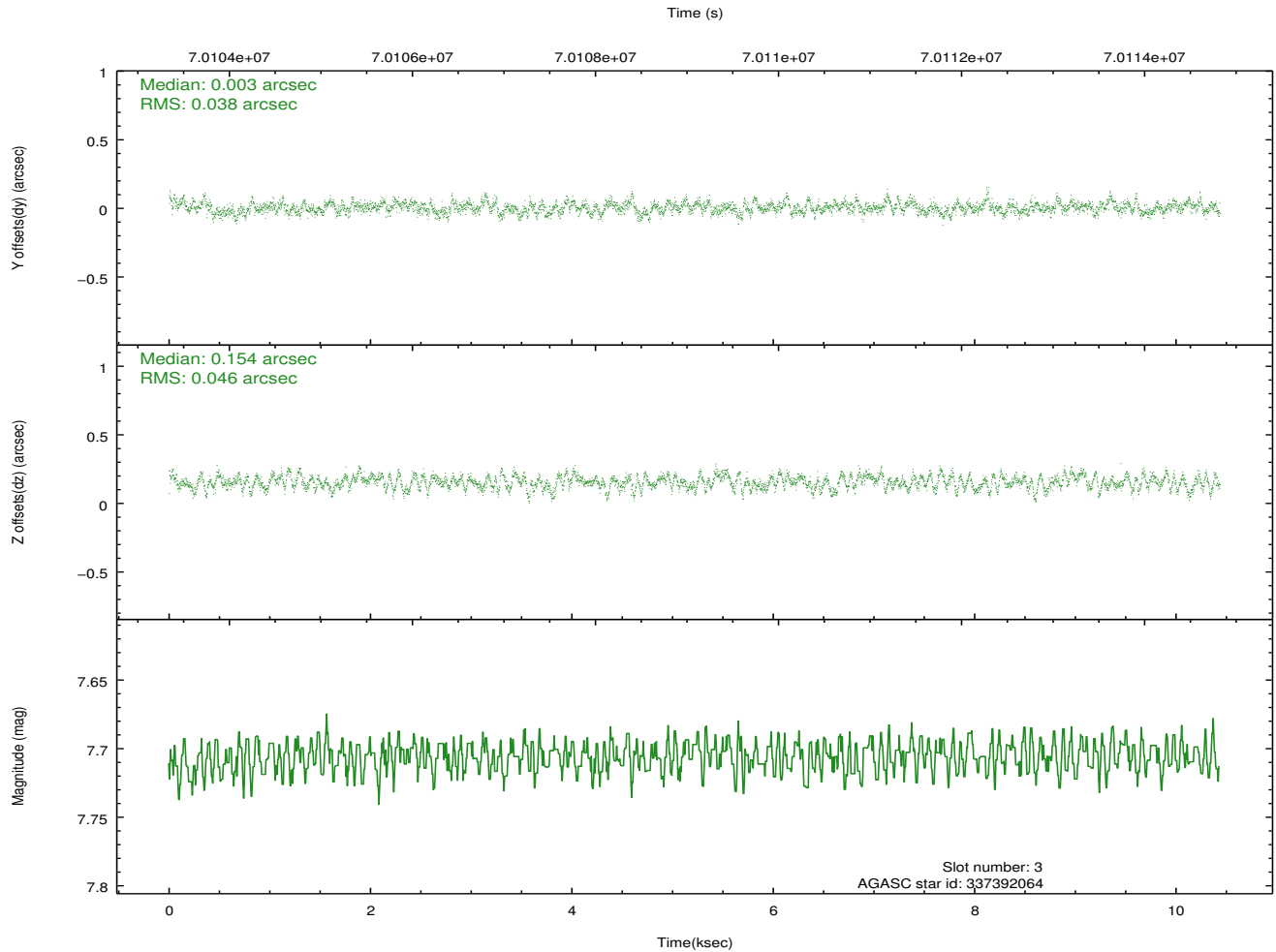
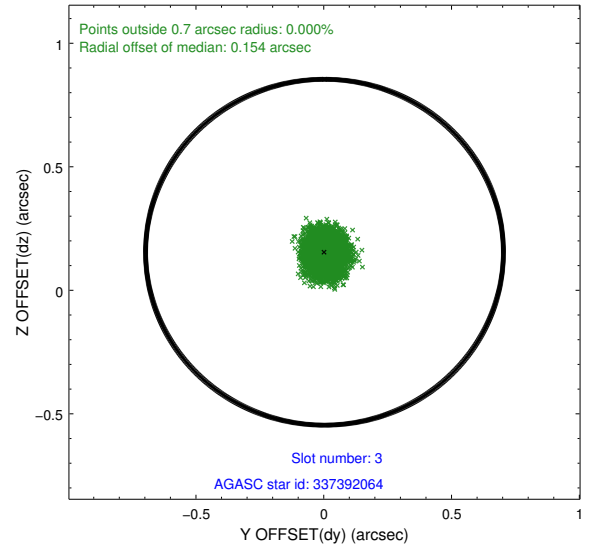
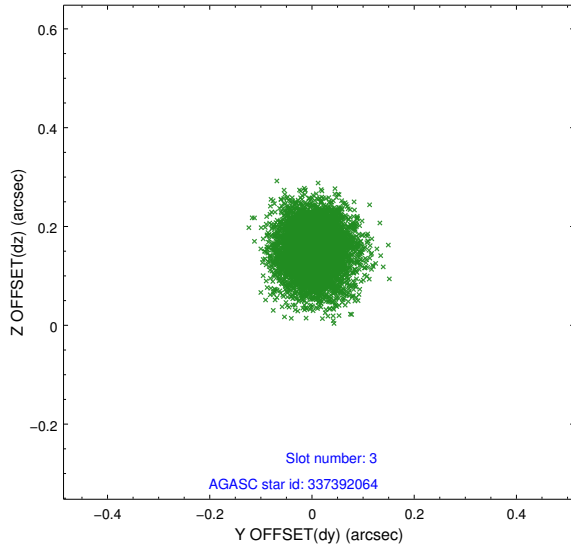


### Slot Statistics

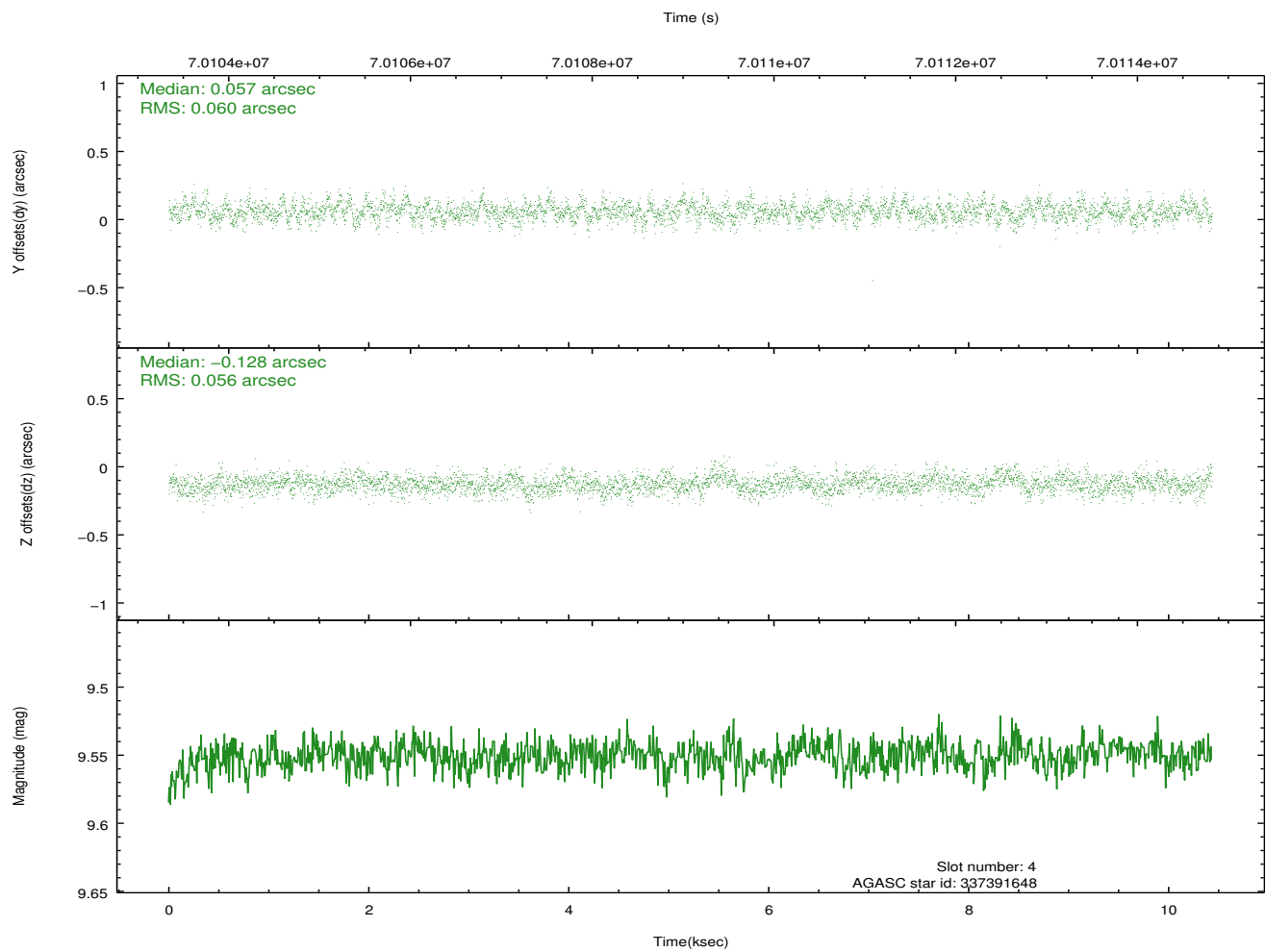
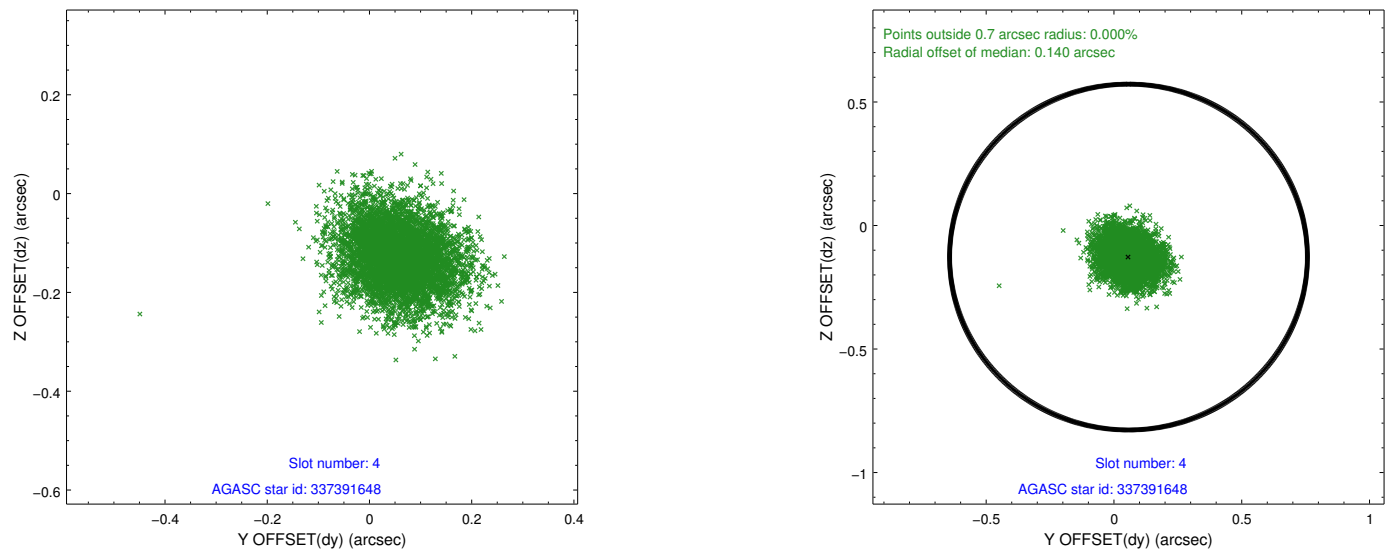
slot	status	id	mag	n_pts	med_dy	med_dz	dr1	dr2	ra	dec	mean_y	mean_z
0	FID	ACIS-I-2	7.17	2546	-0.044	-0.044	0.009	0.016	0.000000	0.000000	-754.80	-992.78
1	FID	ACIS-I-4	7.16	2546	-0.039	0.045	0.007	0.014	0.000000	0.000000	2158.97	913.17
2	FID	ACIS-I-5	7.22	2546	-0.018	0.068	0.008	0.014	0.000000	0.000000	-1807.58	910.56
3	GUIDE	337392064	7.71	5089	0.003	0.154	0.064	0.102	235.072812	34.260305	-804.22	-120.97
4	GUIDE	337391648	9.55	5089	0.057	-0.128	0.087	0.144	234.841389	34.465423	148.38	211.29
5	GUIDE	337394264	9.60	5022	0.059	0.123	0.085	0.140	235.466774	34.405358	-793.37	-1403.27
6	GUIDE	337388800	10.12	5089	0.043	-0.022	0.129	0.220	234.894786	34.813195	1230.38	-438.27
7	GUIDE	337392624	9.72	5087	-0.168	-0.128	0.102	0.165	234.388345	34.443268	620.84	1472.95

## 2.4 Star Slots

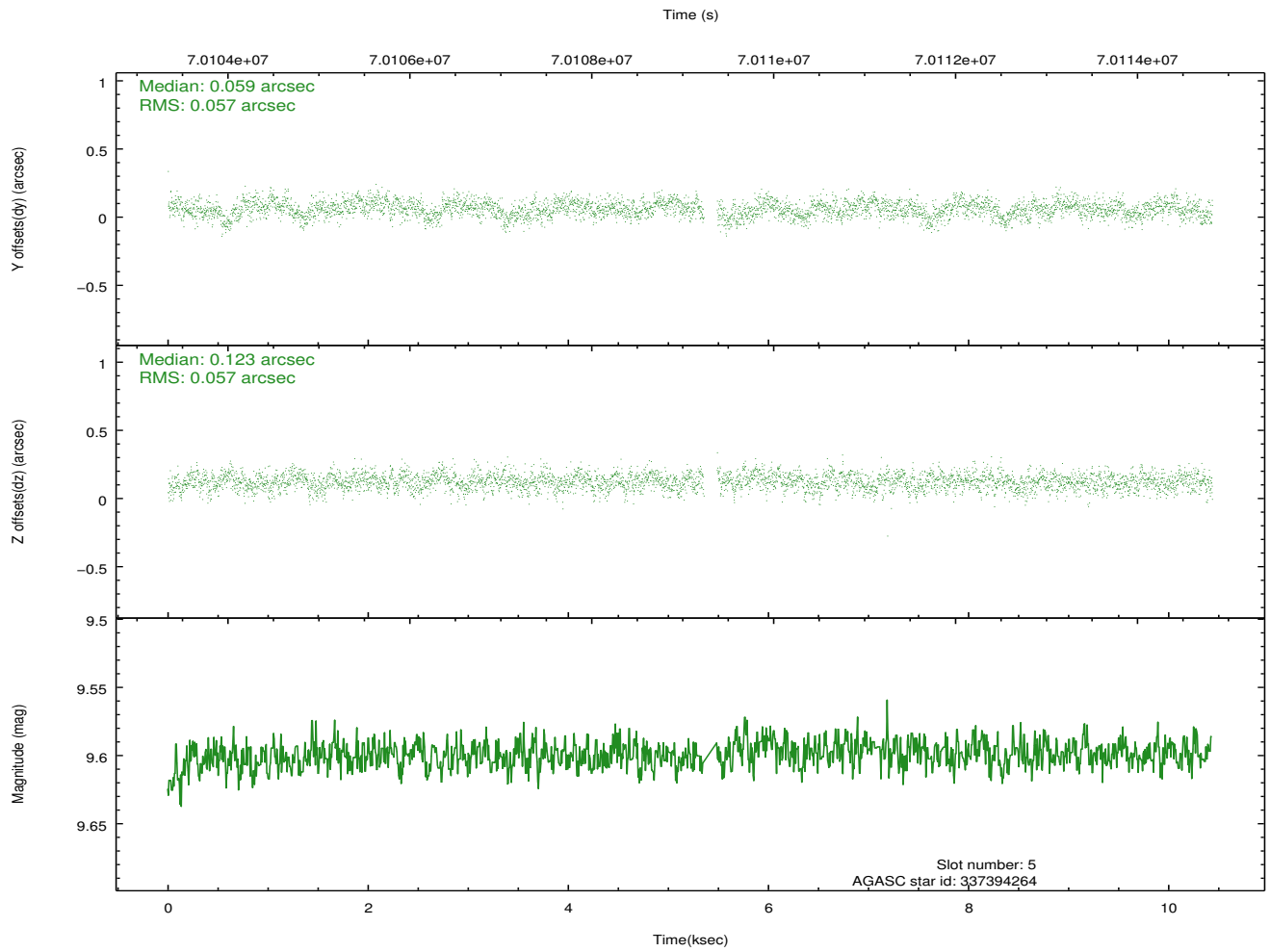
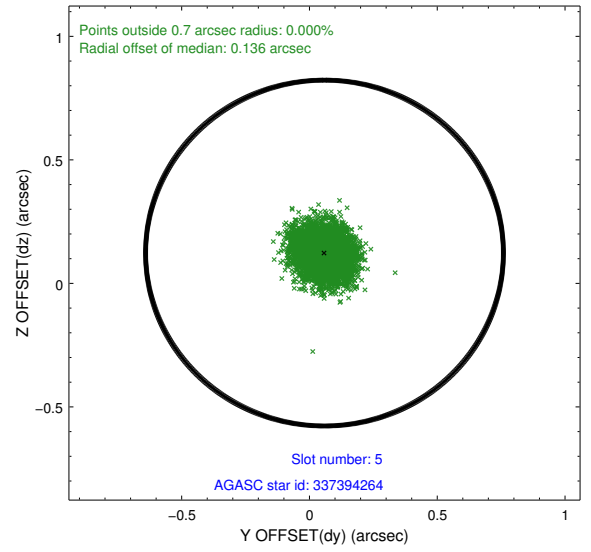
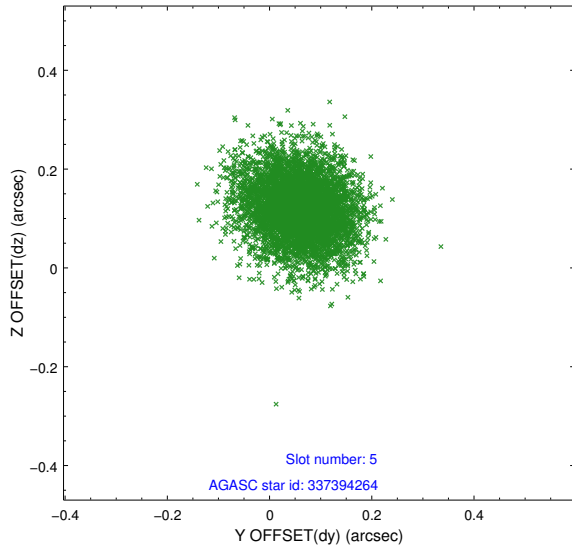
### 2.4.1 Slot 3



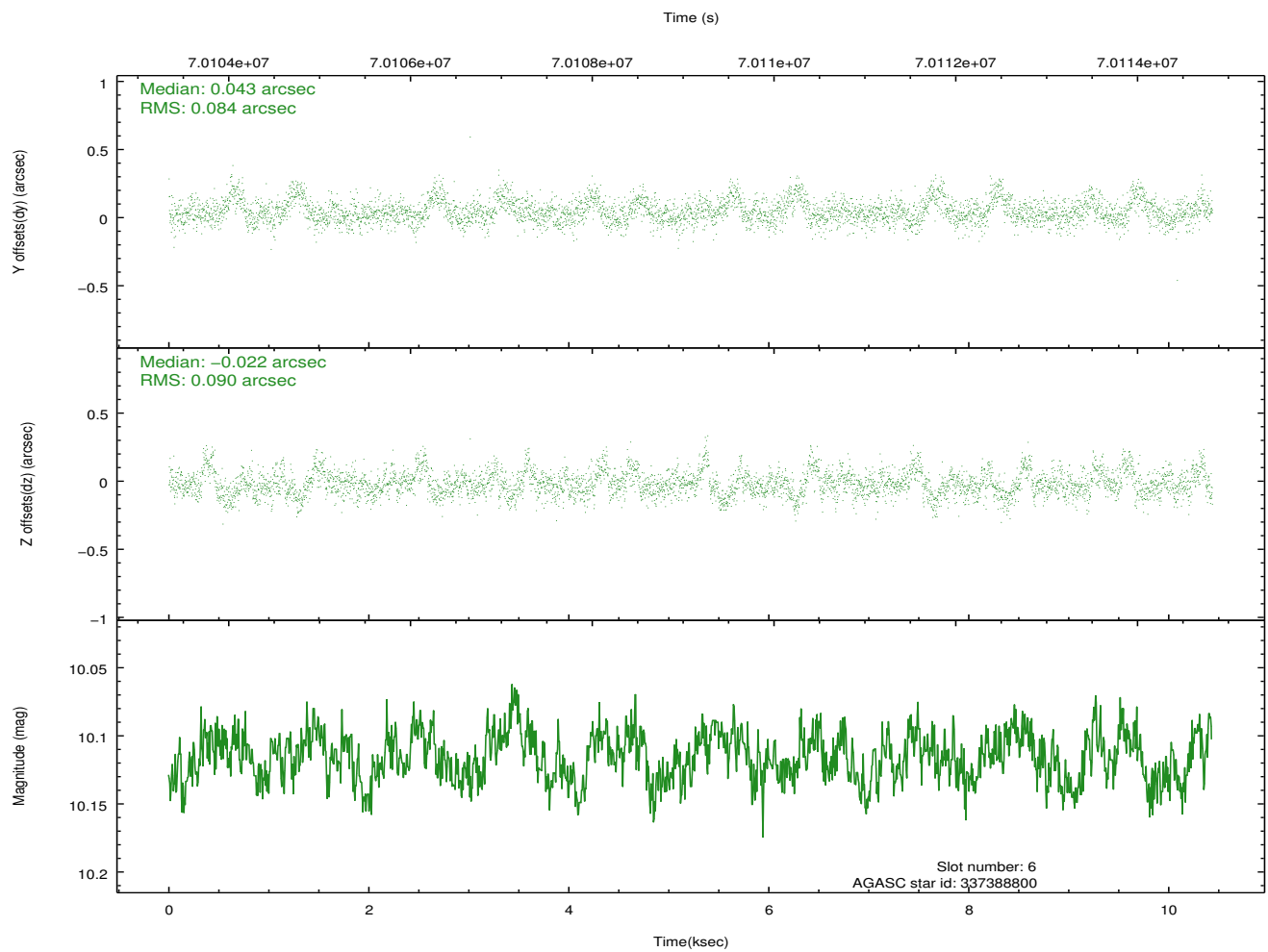
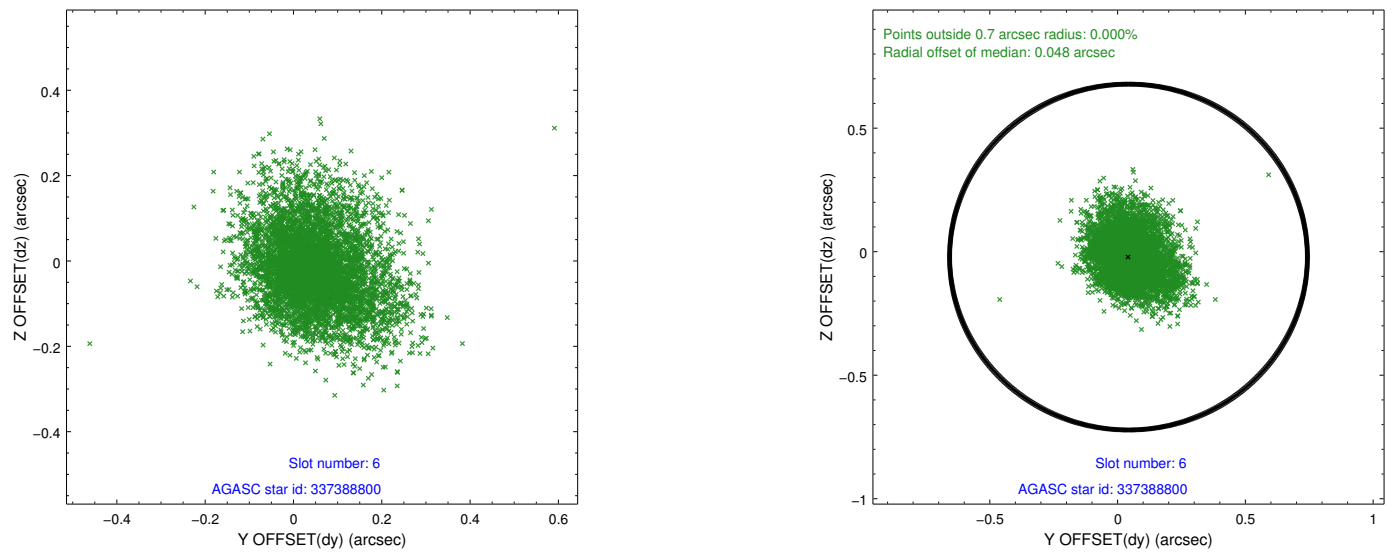
## 2.4.2 Slot 4



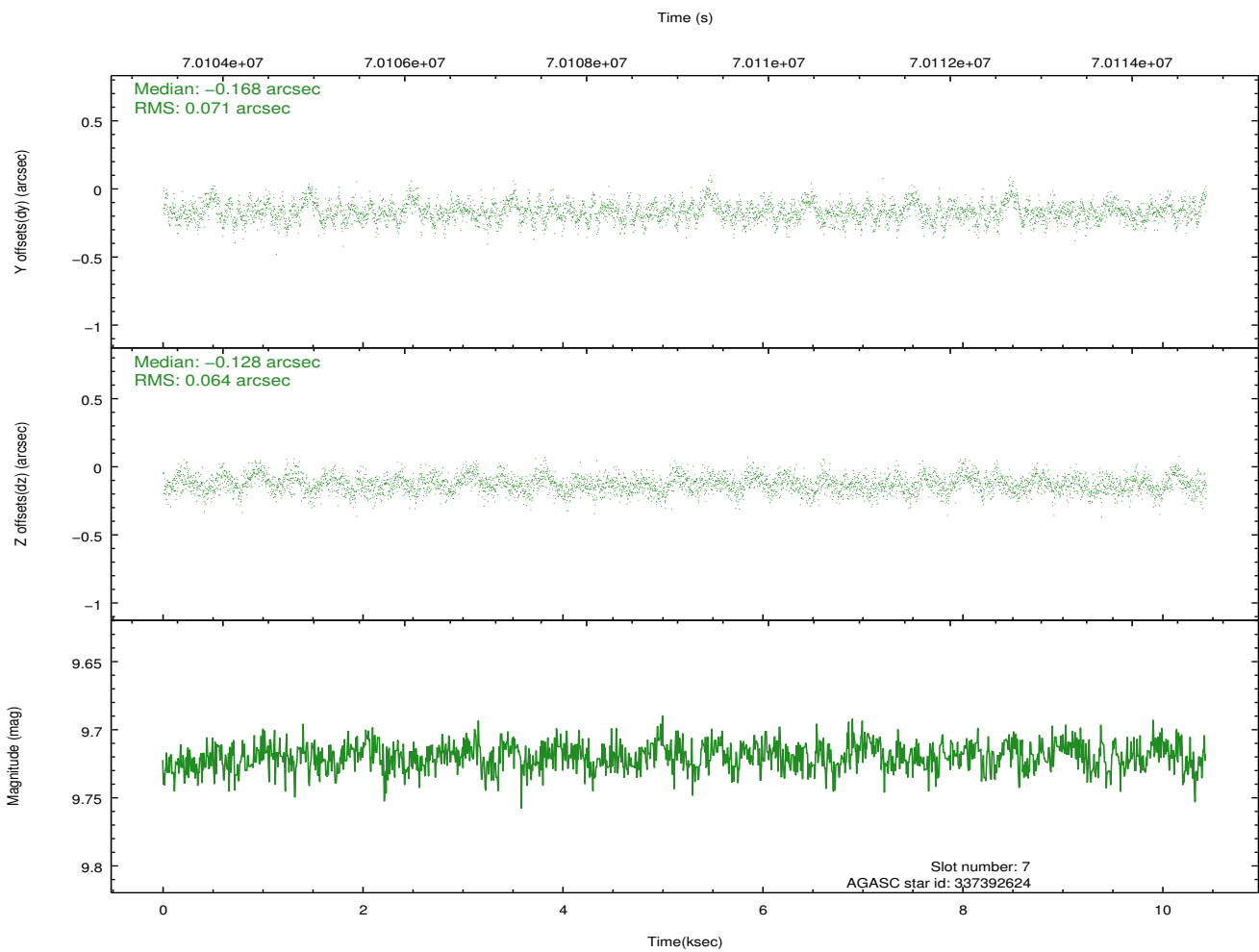
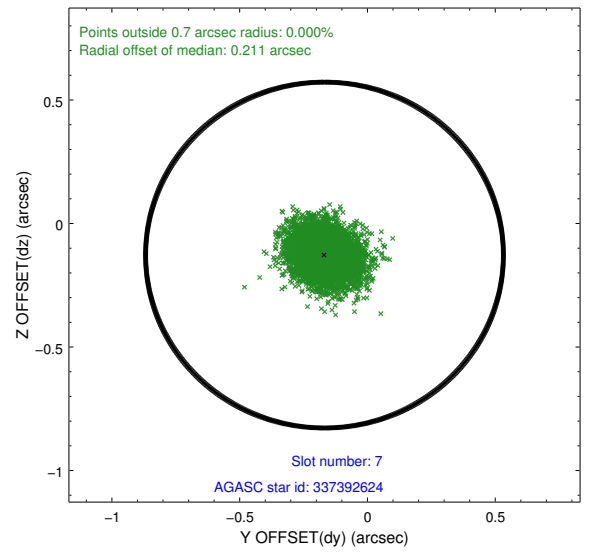
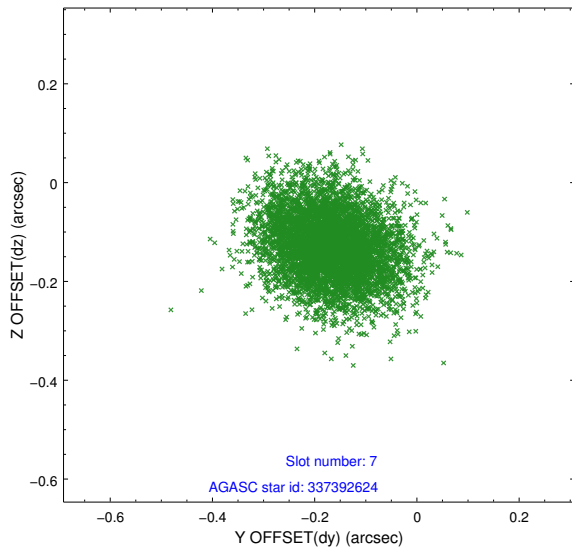
### 2.4.3 Slot 5



## 2.4.4 Slot 6

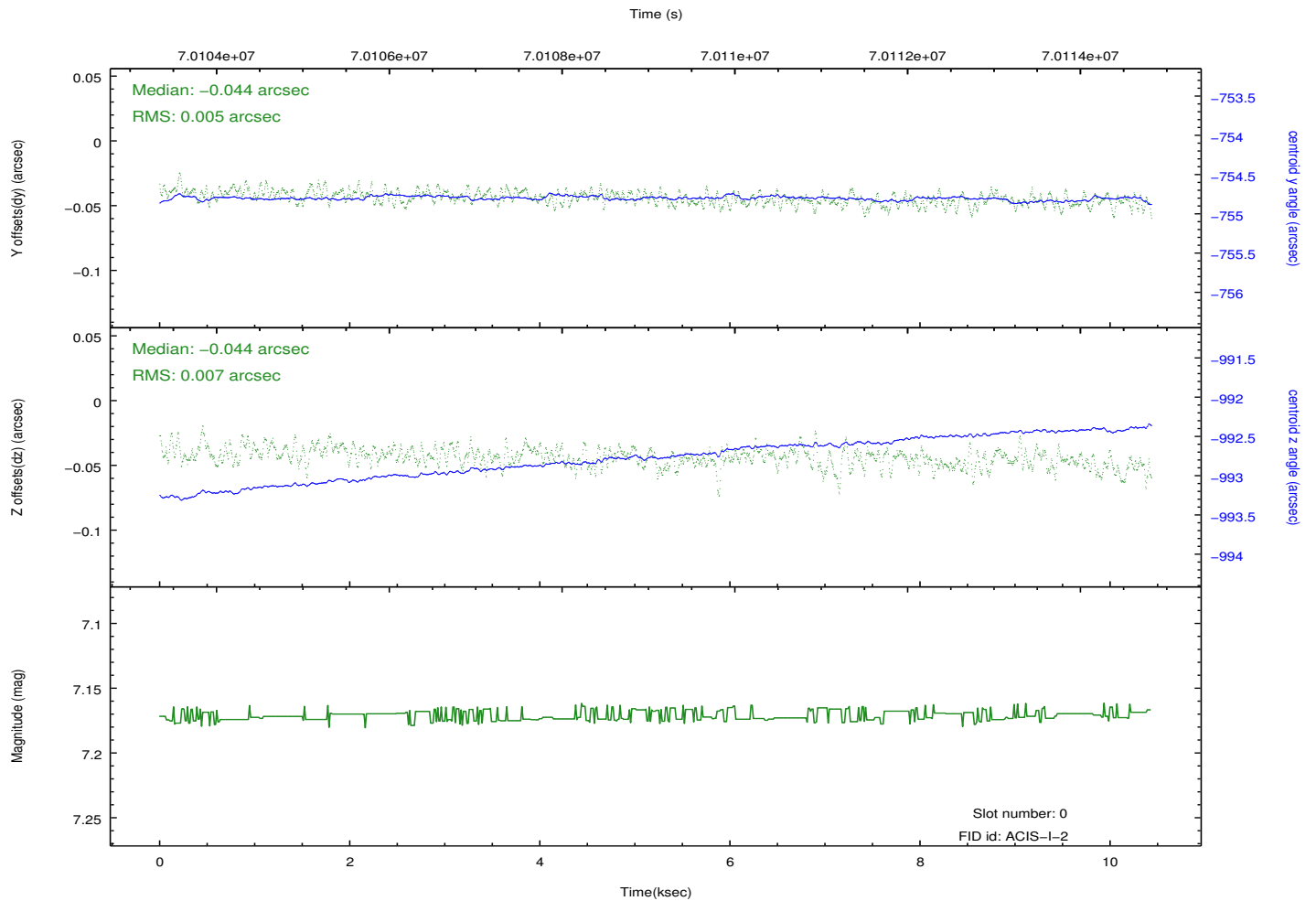
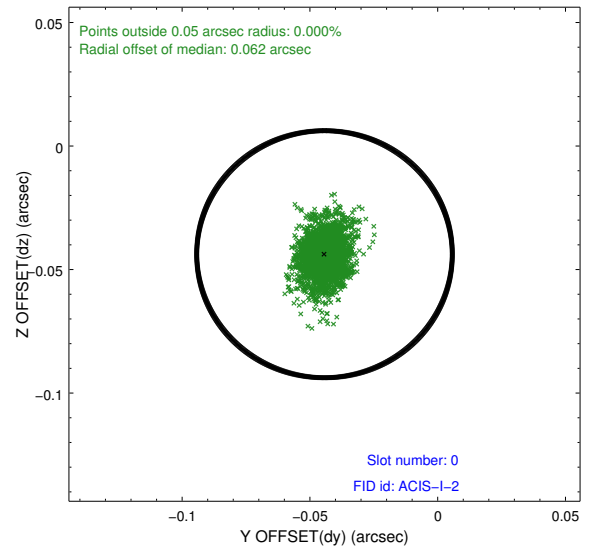
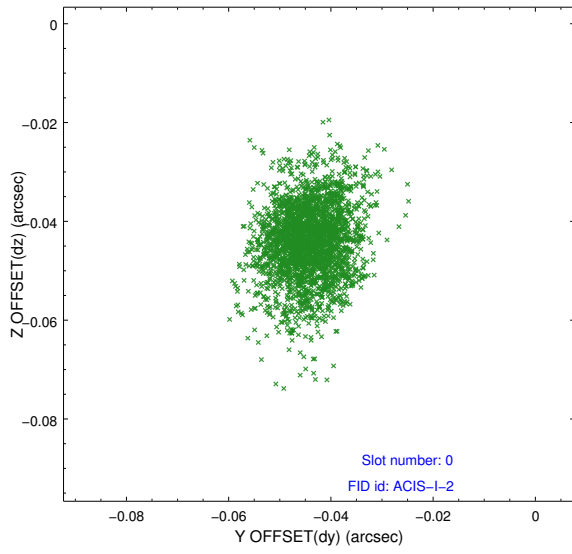


## 2.4.5 Slot 7

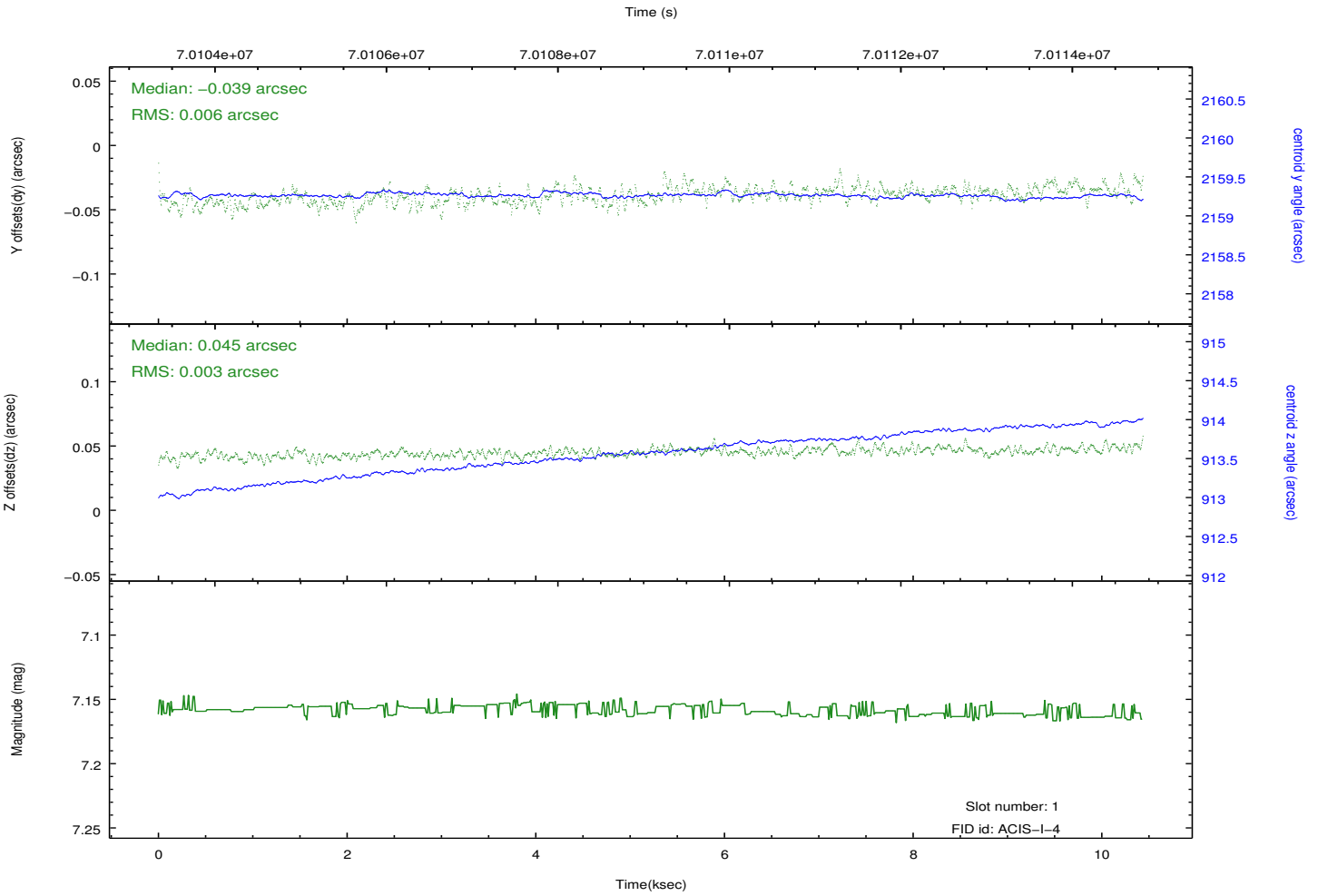
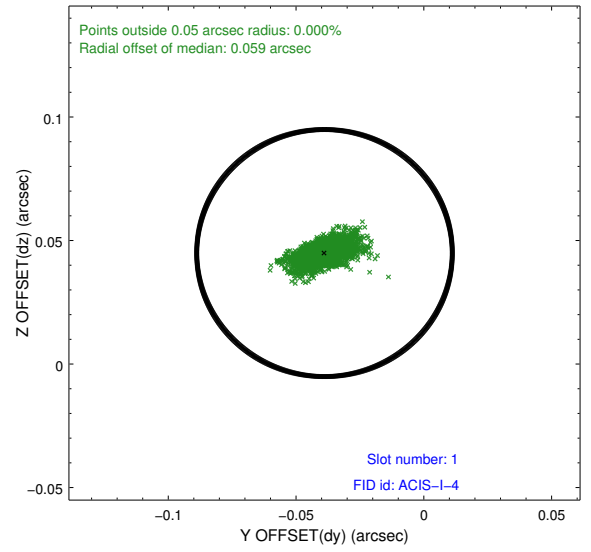
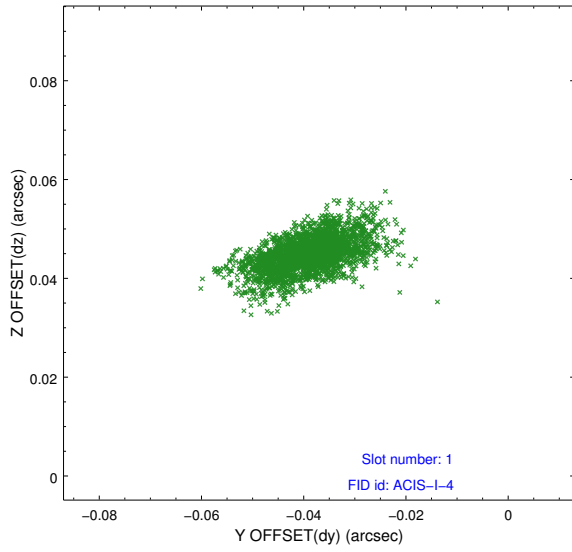


## 2.5 FID Slots

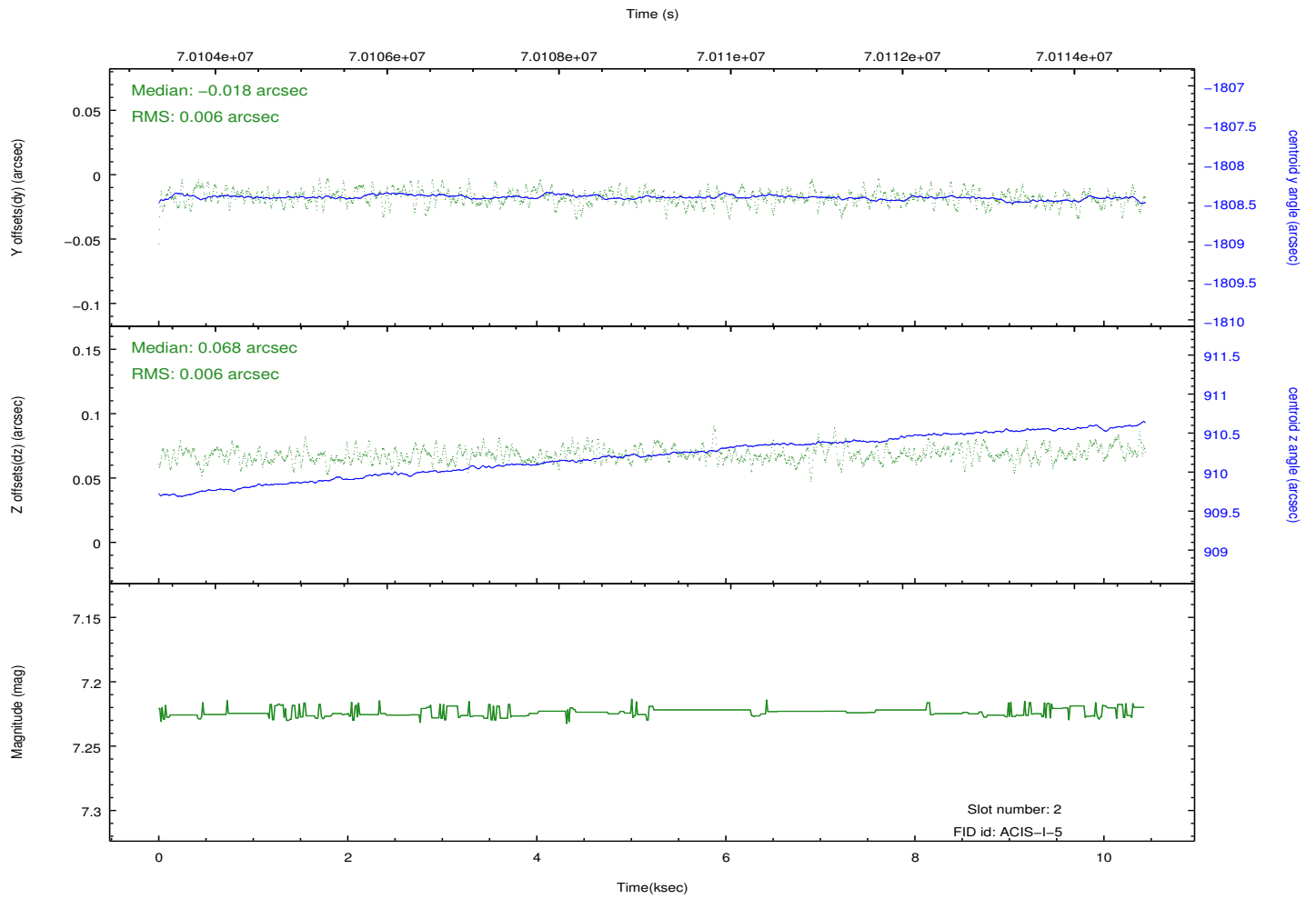
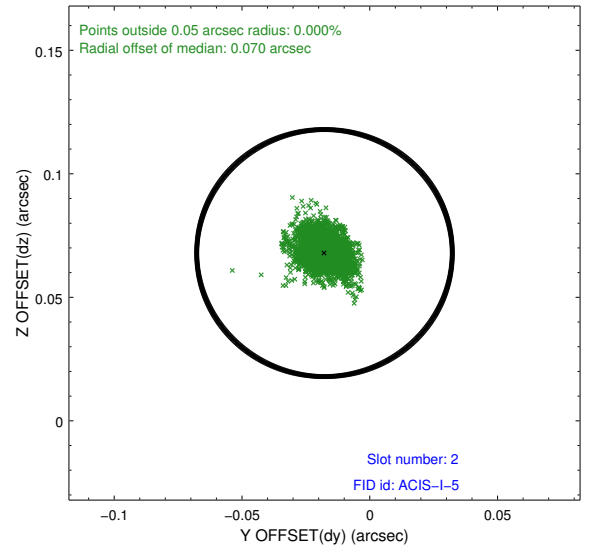
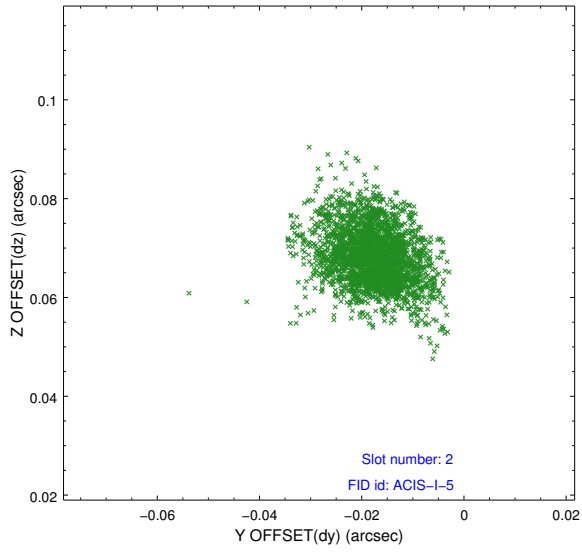
### 2.5.1 Slot 0



## 2.5.2 Slot 1



### 2.5.3 Slot 2



# A Summary

## A.1 Status

V&V Scientist	Jen Lauer
V&V Date (YYYY-MM-DD)	2012.08.27
V&V Edition	1
V&V Disposition and Status	OK
V&V Charge Time	10.432

## A.2 Comments