

V&V Reference Report

L2 ASCDS Version : 8.4.3

Observation 55124 - L2 Version 2
Chandra X-Ray Center

L2 Processing Date : Feb 24 2012

Contents

1	Front	2
2	OBI	3
2.1	OBI	3
2.1.1	Images	3
2.1.2	Bias	3
2.1.3	Parameters	4
2.1.4	Events	4
2.2	Compared Parameters	5
2.3	Star Slots	6
2.4	FID Slots	6
A	Summary	7
A.1	Status	7
A.2	Comments	7

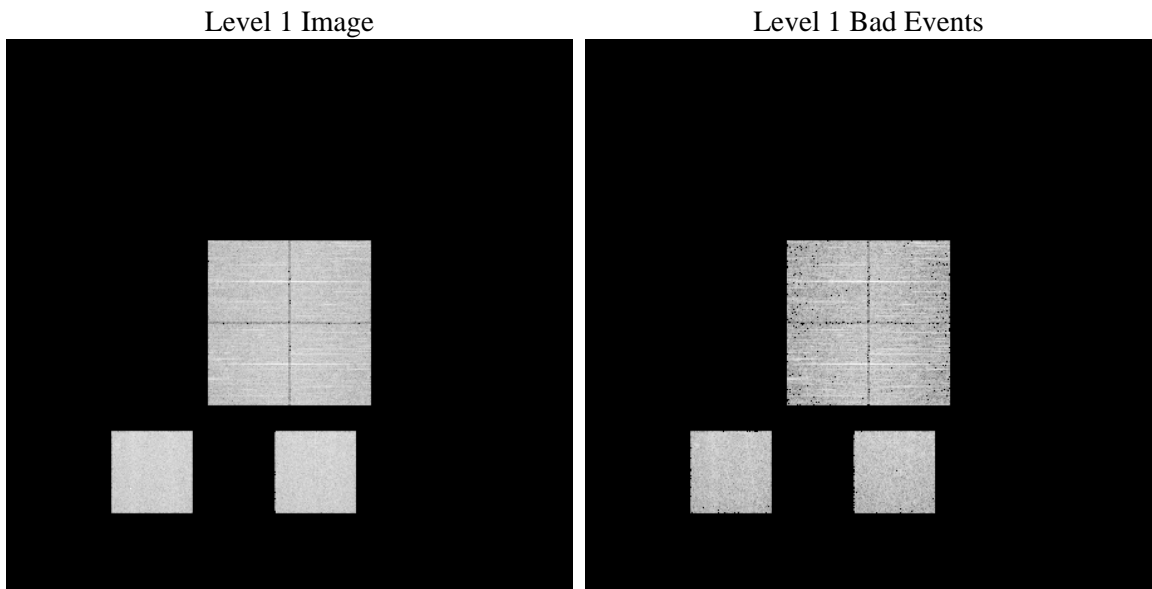
1 Front

seq_num	 	Sequence number
obs_id	55124	Observation id
title	ACIS-012357 diagnostics	Proposal title
observer	CHANDRA engineering request/realtime commanding	Principal investig
object	 	Source name
dtycycle	0	
cycle	P	events from which exps? Prim/Second/Both
ra_targ	0.0	Observer's specified target RA [deg]
dec_targ	0.0	Observer's specified target Dec [deg]
ra_nom	357.23457769037	Nominal RA [deg]
dec_nom	8.093114474495	Nominal Dec [deg]
roll_nom	267.92452052248	Nominal Roll [deg]
revision	2	Processing version of data
ontime	5315.1999802589	Sum of GTIs [s]
livetime	5247.8957176797	Livetime [s]
ontime0	5315.1999802589	Sum of GTIs [s]
ontime1	5315.1999802589	Sum of GTIs [s]
ontime2	5315.1999802589	Sum of GTIs [s]
ontime3	5315.1999802589	Sum of GTIs [s]
ontime5	5315.1999802589	Sum of GTIs [s]
ontime7	5315.1999802589	Sum of GTIs [s]
l2events	198619	Number of level 2 events

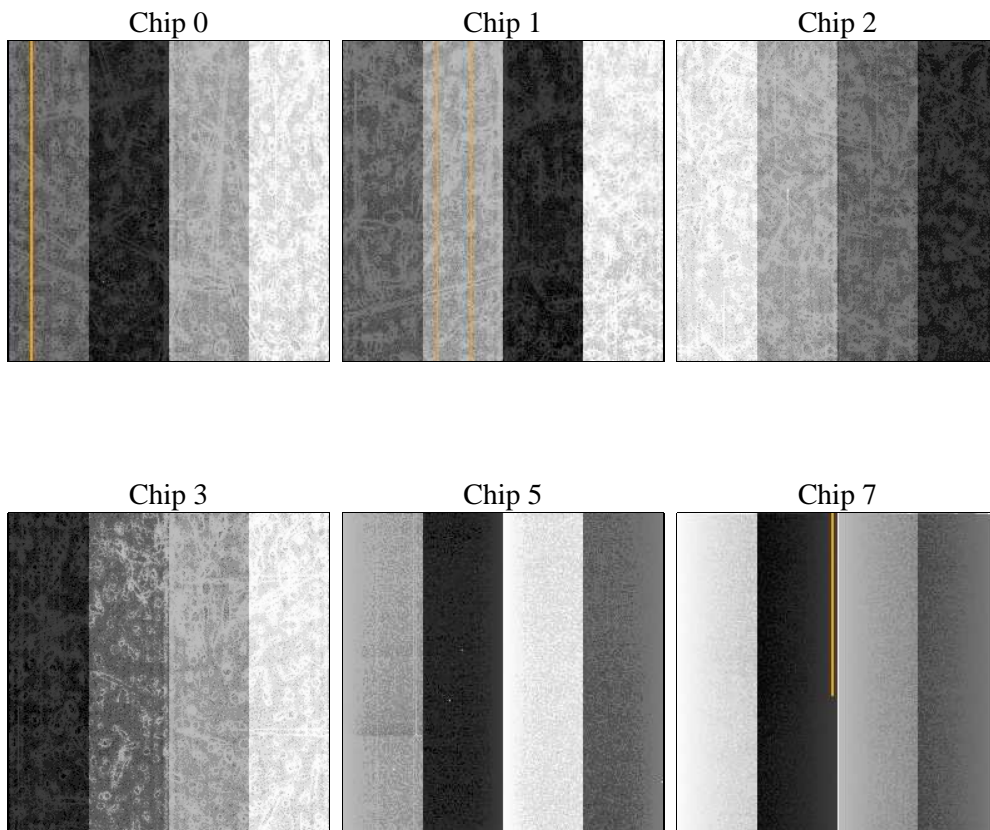
2 OBI

2.1 OBI

2.1.1 Images



2.1.2 Bias



2.1.3 Parameters

obi_num	0	Obi number	sched_exp_time	0.0	[s] Scheduled observation exposure time
ascdsver	8.4.3	Processing system revision	ontime	5315.1999802589	Sum of GTIs [s]
caldbver	4.4.8	 	ontime0	5315.1999802589	Sum of GTIs [s]
date	2012-02-25T03:52:52	Date and time of file creation	ontime1	5315.1999802589	Sum of GTIs [s]
			ontime2	5315.1999802589	Sum of GTIs [s]
revision	2	Processing version of data	ontime3	5315.1999802589	Sum of GTIs [s]
			ontime5	5315.1999802589	Sum of GTIs [s]
			ontime7	5315.1999802589	Sum of GTIs [s]
			l1events	418190	Number of level 1 events

2.1.4 Events

	ccd 0	ccd 1	ccd 2	ccd 3	ccd 5	ccd 7
level 1 events	60433	62252	64018	64835	83878	82774
rejected events	31662	33343	35442	35596	37352	36772
rejected %	52%	53%	55%	54%	44%	44%

	ccd 0	ccd 1	ccd 2	ccd 3	ccd 5	ccd 7
grade 0 events	15102	14346	15505	15903	4364	7357
	24%	23%	24%	24%	5%	8%
grade 1 events	82	58	77	102	90	69
	0%	0%	0%	0%	0%	0%
grade 2 events	5431	6309	4873	5090	17826	10305
	8%	10%	7%	7%	21%	12%
grade 3 events	1889	1794	2025	1994	1558	3938
	3%	2%	3%	3%	1%	4%
grade 4 events	1947	1903	2012	2088	1476	3806
	3%	3%	3%	3%	1%	4%
grade 5 events	2062	1962	1940	2191	4018	5125
	3%	3%	3%	3%	4%	6%
grade 6 events	4604	4741	4350	4344	21616	20909
	7%	7%	6%	6%	25%	25%
grade 7 events	29316	31139	33236	33123	32930	31265
	48%	50%	51%	51%	39%	37%

2.2 Compared Parameters

Parameter	Planned	Actual	Parameter	Planned	Actual
Instrument	ACIS	ACIS	Obspar format version number	7	7
Detector	ACIS-012357	ACIS-012357	Obspar file type	PREDICTED	ACTUAL
Grating	NONE	NONE	Obspar update status	OVERRIDE	OVERRIDE
Data mode	FAINT	FAINT	Number of optional ACIS chips dropped	0	0
Observation mode	SECONDARY	SECONDARY	On-chip summing requested	N	N
[deg] Pointing RA	0	357.2345776903669	Subarray requested	NONE	NONE
[deg] Pointing Dec	0	8.093114474494957	Alternating exposures requested	N	N
[deg] Pointing Roll	0.0	267.9245205224783	[s] Primary exposure time	3.2	3.2
[mm] SIM focus pos	-1.4281808131	-1.4281808131			
[mm] SIM defocus	0.1051557500557434	0.1051557500557434			
[mm] SIM translation stage pos	250.4660330802	250.4660330802			
[mm] SIM translation stage offset	-0.01005726120527584	-0.01005726120527584			
[s] Observation start time (MET)	434803658.216873	434803658.216873			
Observation start date	2011-10-12T10:47:38	2011-10-12T10:47:38			
[s] Observation end time (MET)	434811035.667811	434811035.667811			
Observation end date	2011-10-12T12:50:36	2011-10-12T12:50:35			
Read mode	TIMED	TIMED			

2.3 Star Slots

2.4 FID Slots

A Summary

A.1 Status

V&V Scientist	Jen Lauer
V&V Date (YYYY-MM-DD)	2012.02.27
V&V Edition	1
V&V Disposition and Status	OK
V&V Charge Time	5.3151999802589

A.2 Comments