

V&V Reference Report

L2 ASCDS Version : 8.5.1

Observation 5804 - L2 Version 3
Chandra X-Ray Center

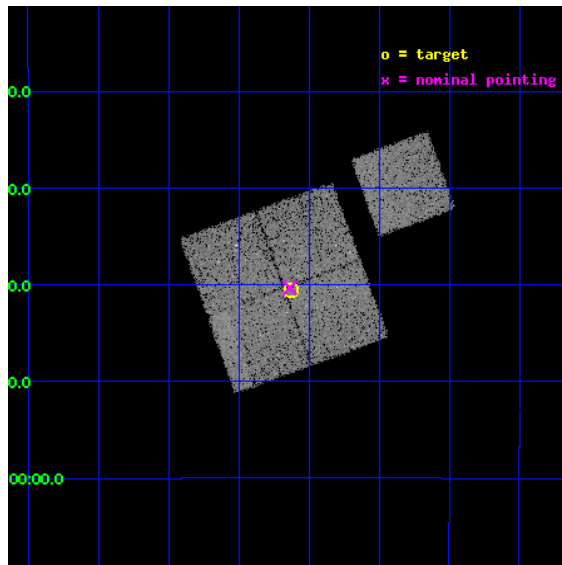
L2 Processing Date : Dec 18 2012

Contents

1	Front	2
2	OBI	3
2.1	OBI	3
2.1.1	Images	3
2.1.2	Bias	3
2.1.3	Parameters	4
2.1.4	Events	4
2.2	Compared Parameters	5
2.3	Aspect	6
2.4	Star Slots	9
2.4.1	Slot 3	9
2.4.2	Slot 4	10
2.4.3	Slot 5	11
2.4.4	Slot 6	12
2.4.5	Slot 7	13
2.5	FID Slots	14
2.5.1	Slot 0	14
2.5.2	Slot 1	15
2.5.3	Slot 2	16
A	Summary	17
A.1	Status	17
A.2	Comments	17

1 Front

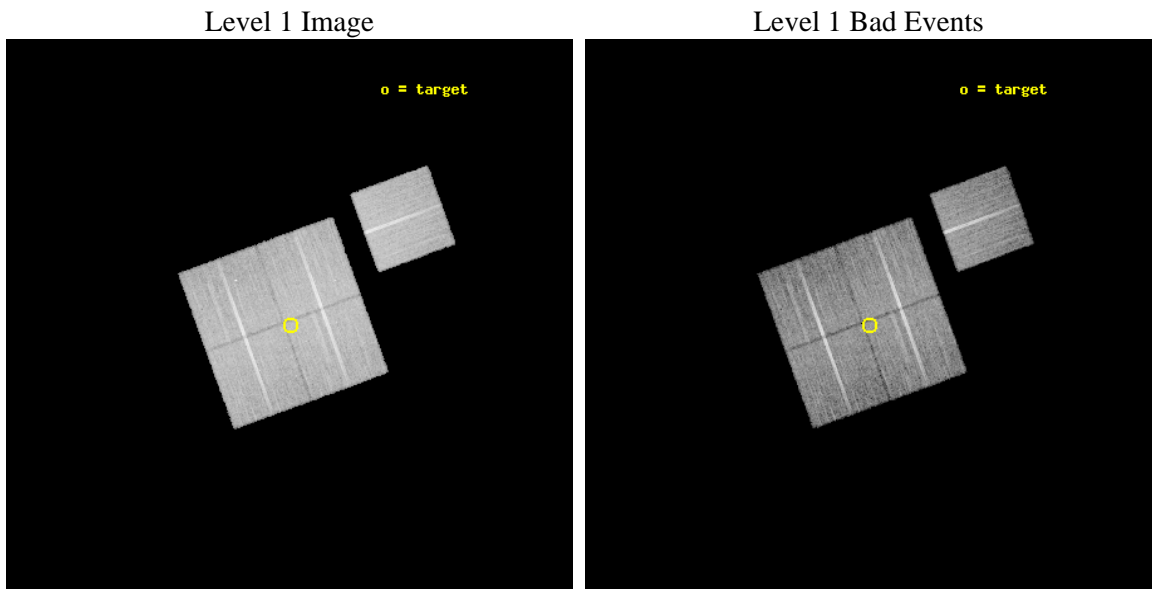
seq_num	800517	Sequence number
obs_id	5804	Observation id
title	Chandra Observations of the DLS Shear-Selected Cluster Survey	Prop
observer	Prof. John Hughes	Principal investigator
object	DLS J1356-1140	Source name
dtycycle	0	
cycle	P	events from which exps? Prim/Second/Both
ra_targ	209.030833	Observer's specified target RA [deg]
dec_targ	-11.675556	Observer's specified target Dec [deg]
ra_nom	209.03403249133	Nominal RA [deg]
dec_nom	-11.672166773015	Nominal Dec [deg]
roll_nom	70.015633358771	Nominal Roll [deg]
revision	3	Processing version of data
ontime	21479.89995867	Sum of GTIs [s]
livetime	21199.249252438	Livetime [s]
ontime0	21476.758978397	Sum of GTIs [s]
ontime1	21479.89995867	Sum of GTIs [s]
ontime2	21476.758948535	Sum of GTIs [s]
ontime3	21479.89995867	Sum of GTIs [s]
ontime6	21479.89995867	Sum of GTIs [s]
l2events	57395	Number of level 2 events



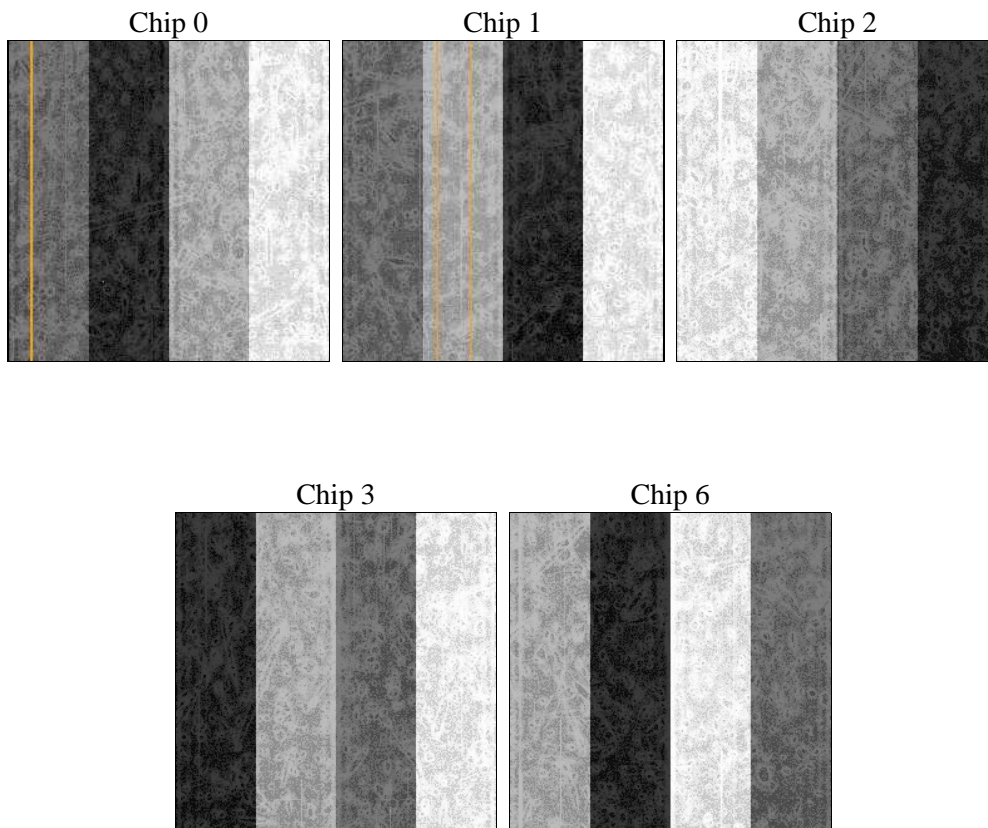
2 OBI

2.1 OBI

2.1.1 Images



2.1.2 Bias



2.1.3 Parameters

obi_num	0	Obi number	sched_exp_time	21300.000000	[s] Scheduled observation exposure time
ascdsver	8.5.1	Processing system revision	ontime	21479.89995867	Sum of GTIs [s]
caldbver	4.5.5	 	ontime0	21476.758978397	Sum of GTIs [s]
date	2012-12-18T07:41:46	Date and time of file creation	ontime1	21479.89995867	Sum of GTIs [s]
revision	3	Processing version of data	ontime2	21476.758948535	Sum of GTIs [s]
			ontime3	21479.89995867	Sum of GTIs [s]
			ontime6	21479.89995867	Sum of GTIs [s]
			l1events	672201	Number of level 1 events

2.1.4 Events

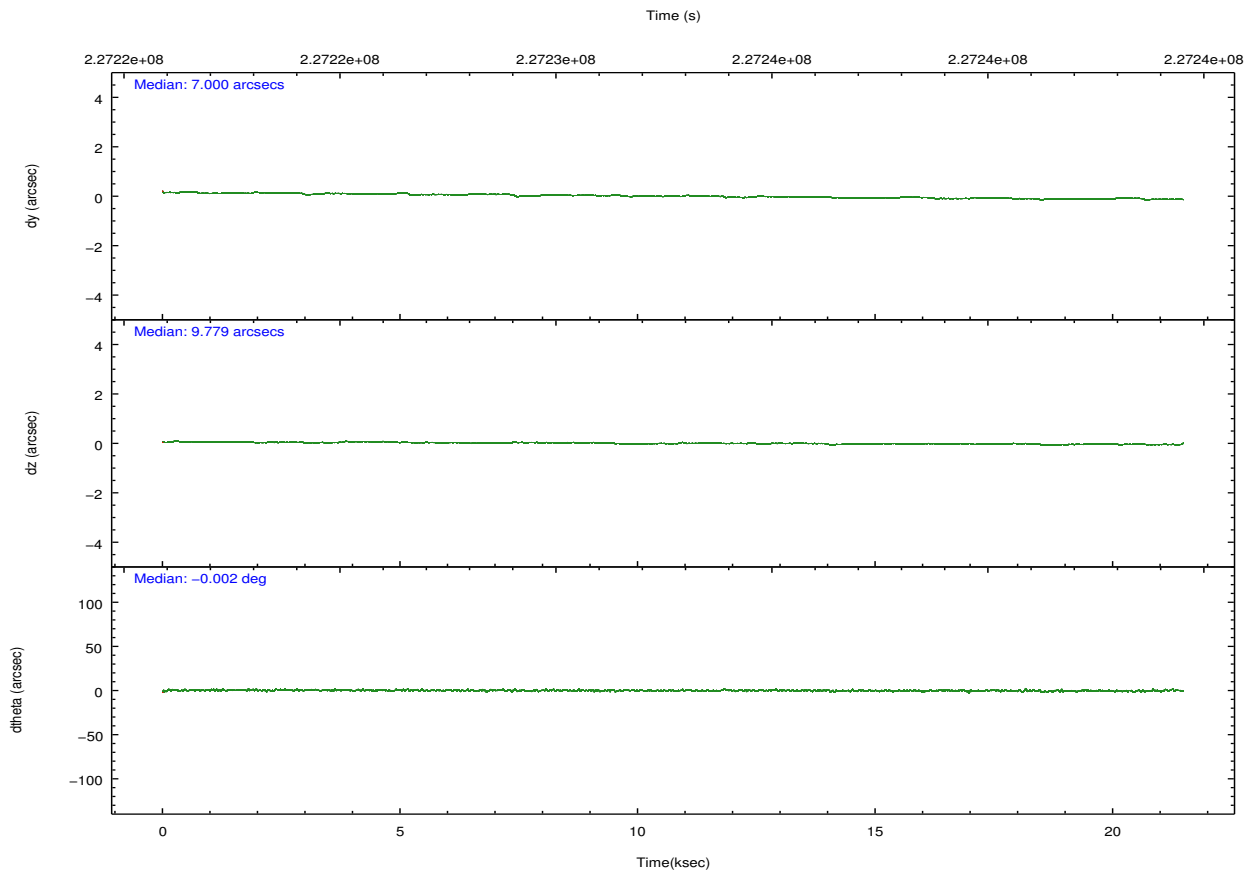
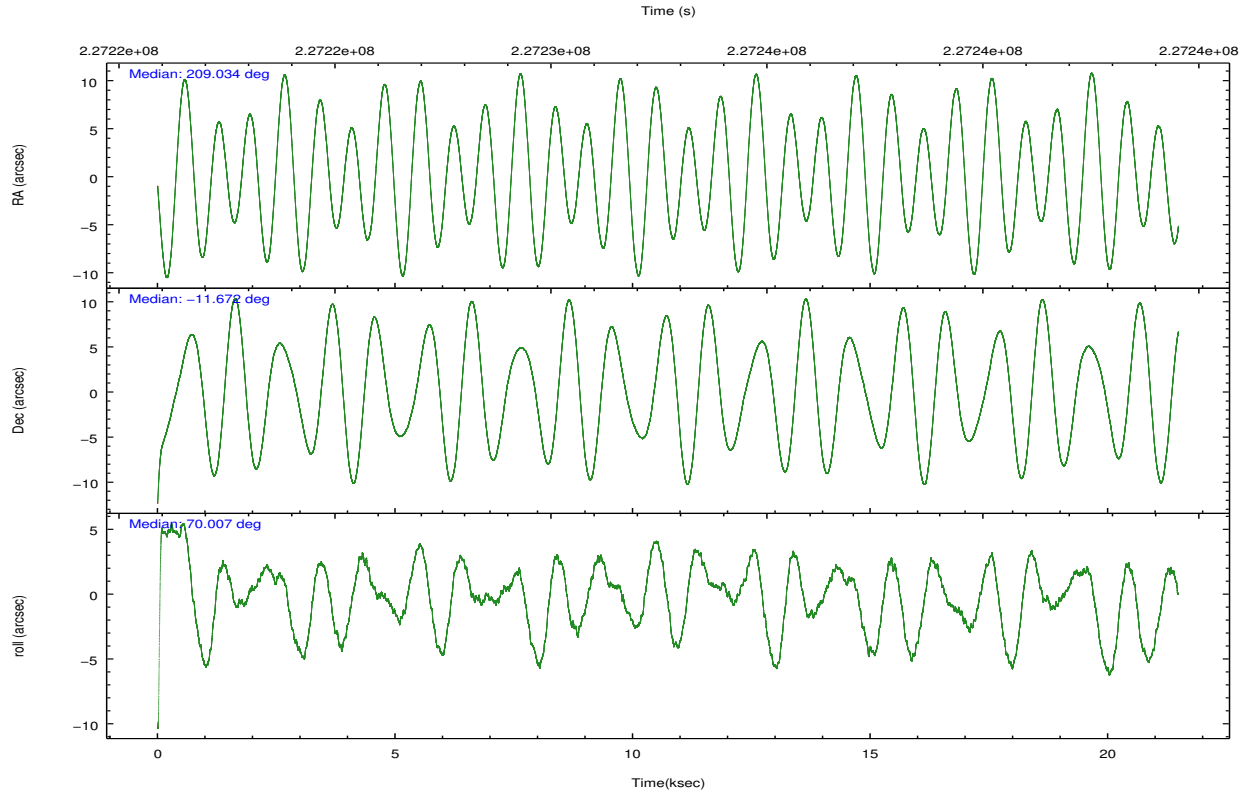
	ccd 0	ccd 1	ccd 2	ccd 3	ccd 6
level 1 events	125347	126066	143994	137377	139417
rejected events	111589	110945	130516	124548	125520
rejected %	89%	88%	90%	90%	90%

	ccd 0	ccd 1	ccd 2	ccd 3	ccd 6
grade 0 events	5115	5630	5117	4602	4806
	4%	4%	3%	3%	3%
grade 1 events	72	62	83	78	65
	0%	0%	0%	0%	0%
grade 2 events	3157	3356	3099	2839	3041
	2%	2%	2%	2%	2%
grade 3 events	1559	1739	1444	1493	1547
	1%	1%	1%	1%	1%
grade 4 events	1488	1638	1453	1446	1639
	1%	1%	1%	1%	1%
grade 5 events	4719	5080	4484	5560	5384
	3%	4%	3%	4%	3%
grade 6 events	2564	2908	2501	2585	2997
	2%	2%	1%	1%	2%
grade 7 events	106673	105653	125813	118774	119938
	85%	83%	87%	86%	86%

2.2 Compared Parameters

Parameter	Planned	Actual	Parameter	Planned	Actual
Instrument	ACIS	ACIS	Obspar format version number	7	7
Detector	ACIS-01236	ACIS-01236	Obspar file type	PREDICTED	ACTUAL
Grating	NONE	NONE	Obspar update status	NONE	UPDATED
Data mode	VFAINT	VFAINT	Number of optional ACIS chips dropped	0	0
Observation mode	POINTING	POINTING	On-chip summing requested	N	N
[deg] Pointing RA	209.039042	209.0340324913321	Subarray requested	NONE	NONE
[deg] Pointing Dec	-11.699110	-11.67216677301536	Alternating exposures requested	N	N
[deg] Pointing Roll	69.807972	70.01563335877066	[s] Primary exposure time	0.000000	3.1
[mm] SIM focus pos	-0.782348	-0.7809083437167272			
[mm] SIM defocus	0	0.001439871863259334			
[mm] SIM translation stage pos	-233.592463	-233.5874344608287			
[mm] SIM translation stage offset	0	-0.005018542100998502			
[s] Observation start time (MET)	227222160.184000	227221065.83413			
Observation start date	2005-03-14T21:14:56	2005-03-14T20:57:45			
[s] Observation end time (MET)	227243460.184000	227244681.3227			
Observation end date	2005-03-15T03:09:56	2005-03-15T03:31:21			
Read mode	TIMED	TIMED			

2.3 Aspect

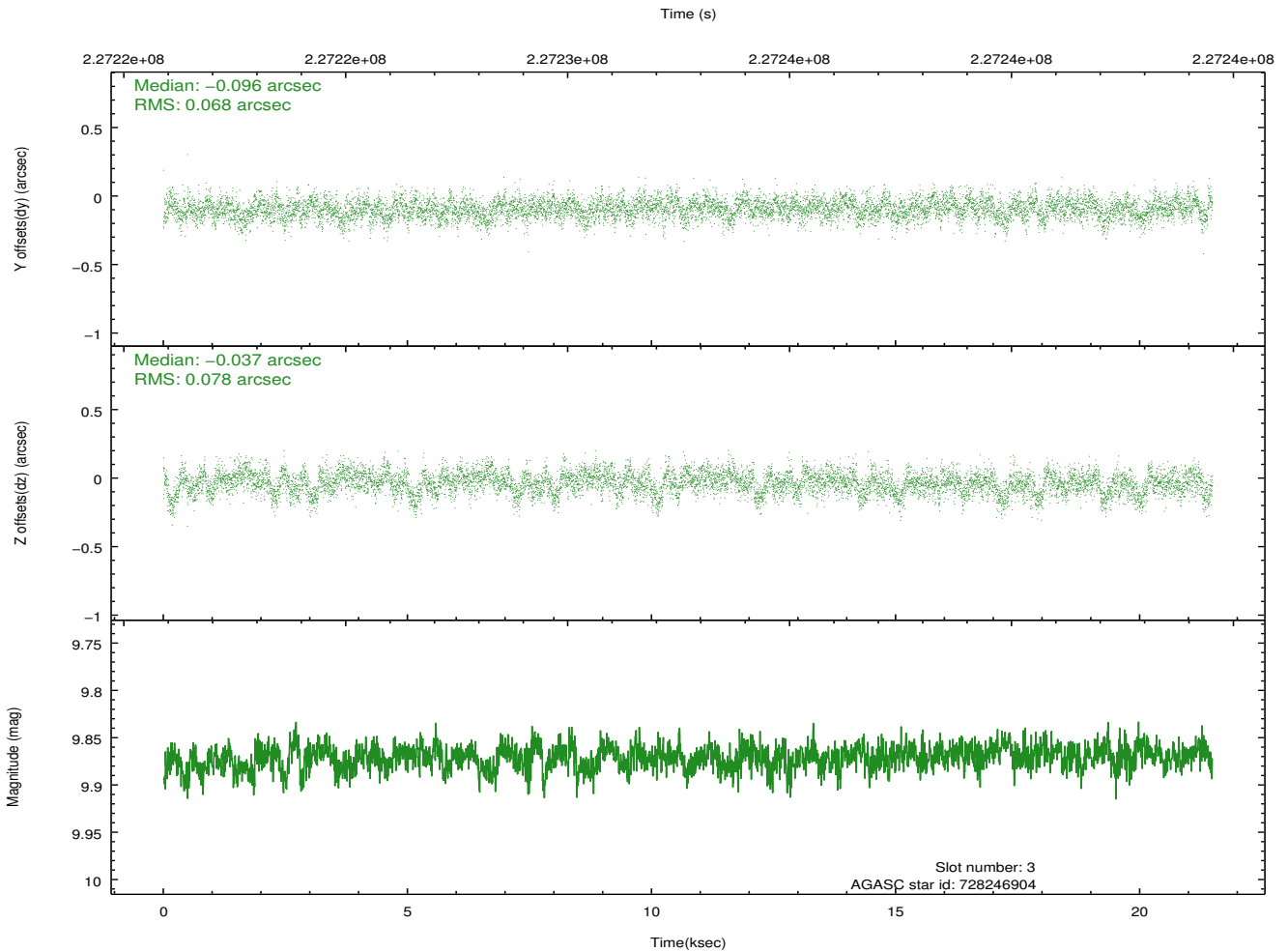
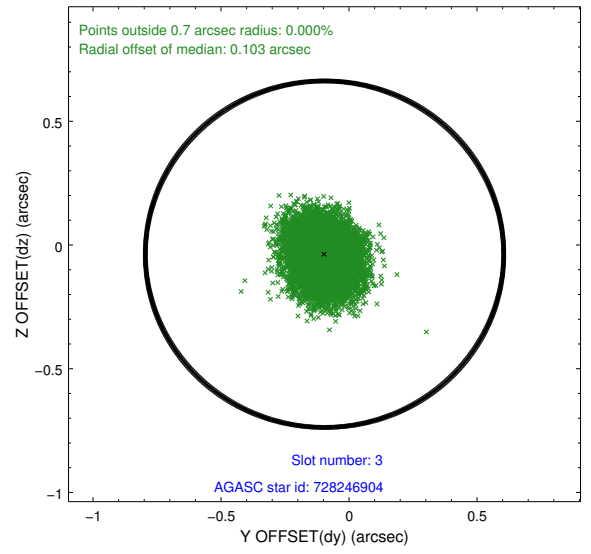
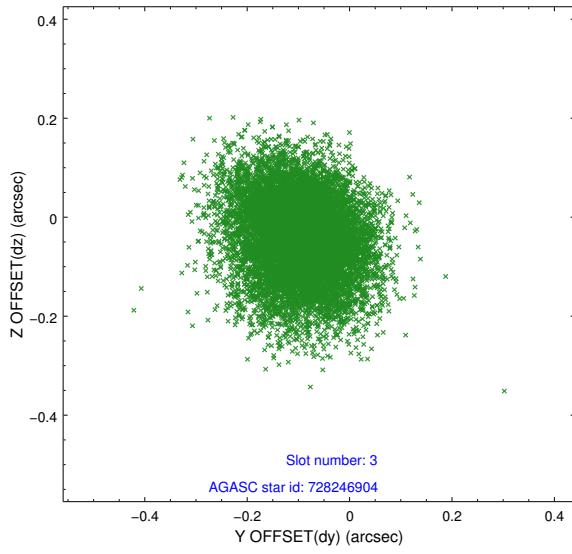


Slot Statistics

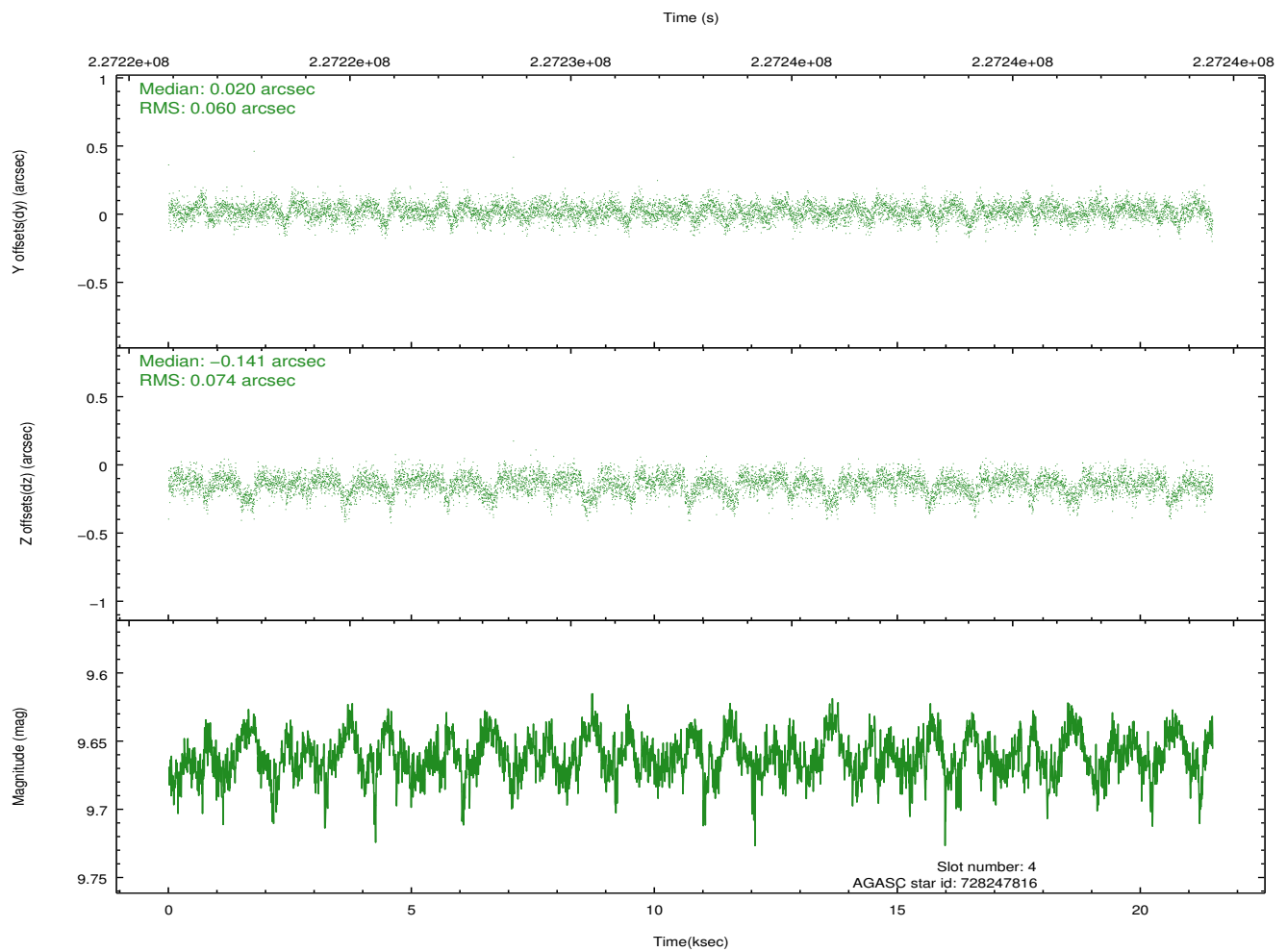
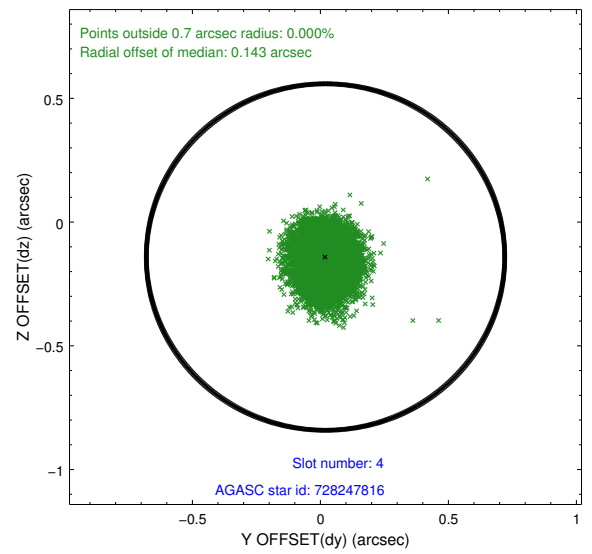
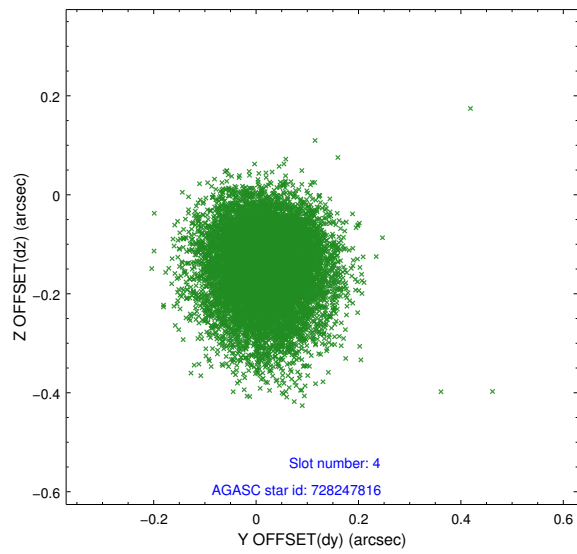
slot	status	id	mag	n_pts	med_dy	med_dz	dr1	dr2	ra	dec	mean_y	mean_z
0	FID	ACIS-I-4	7.18	5239	0.122	0.015	0.010	0.017	0.000000	0.000000	2152.77	1066.63
1	FID	ACIS-I-5	7.23	5240	-0.222	0.013	0.010	0.019	0.000000	0.000000	-1815.32	1064.55
2	FID	ACIS-I-6	7.26	5240	-0.001	0.039	0.009	0.015	0.000000	0.000000	398.05	1708.88
3	GUIDE	728246904	9.87	10456	-0.096	-0.037	0.110	0.181	208.922180	-11.454653	683.64	690.88
4	GUIDE	728247816	9.66	10477	0.020	-0.141	0.100	0.167	208.940266	-11.917686	-858.37	54.87
5	GUIDE	728248504	7.83	10481	0.078	0.327	0.069	0.108	208.881327	-12.223064	-1961.73	-130.16
6	GUIDE	728378760	8.44	10482	-0.014	0.152	0.072	0.115	209.447556	-11.536817	1044.91	-1150.51
7	GUIDE	728243160	10.06	10467	0.017	-0.290	0.138	0.227	208.309960	-11.797392	-1222.01	2287.61

2.4 Star Slots

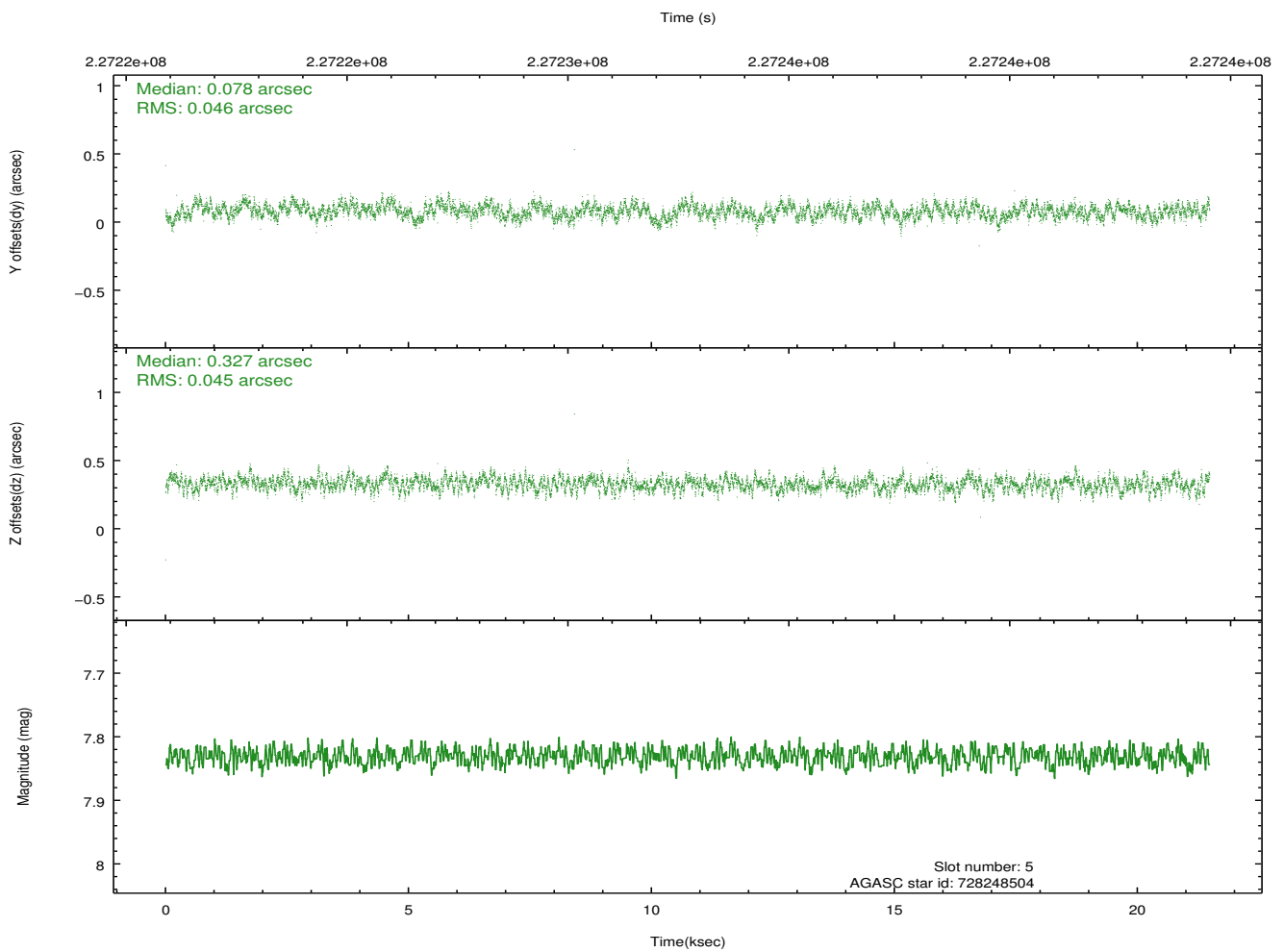
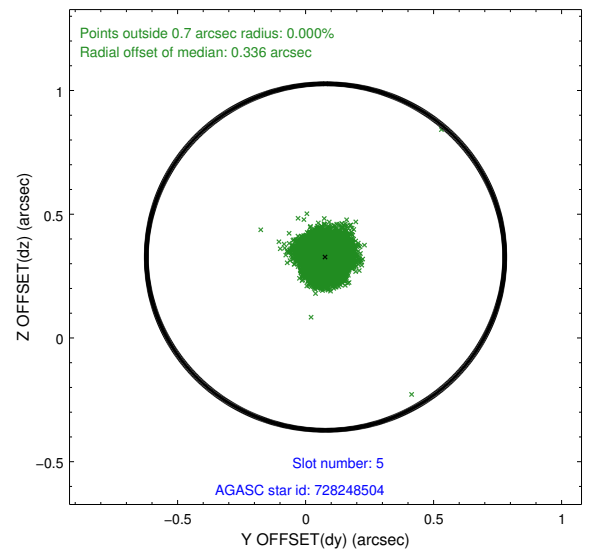
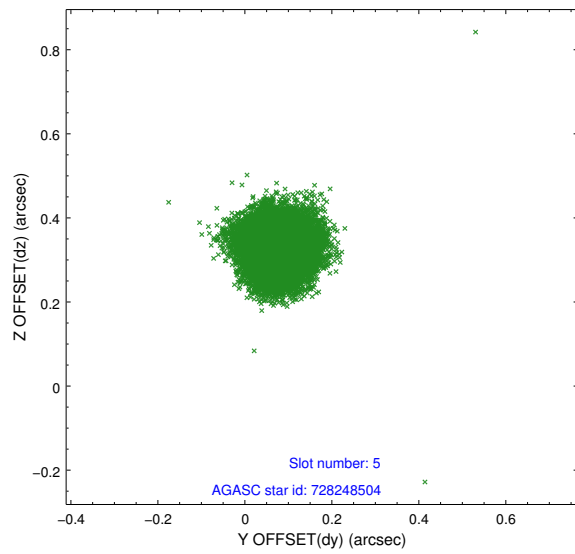
2.4.1 Slot 3



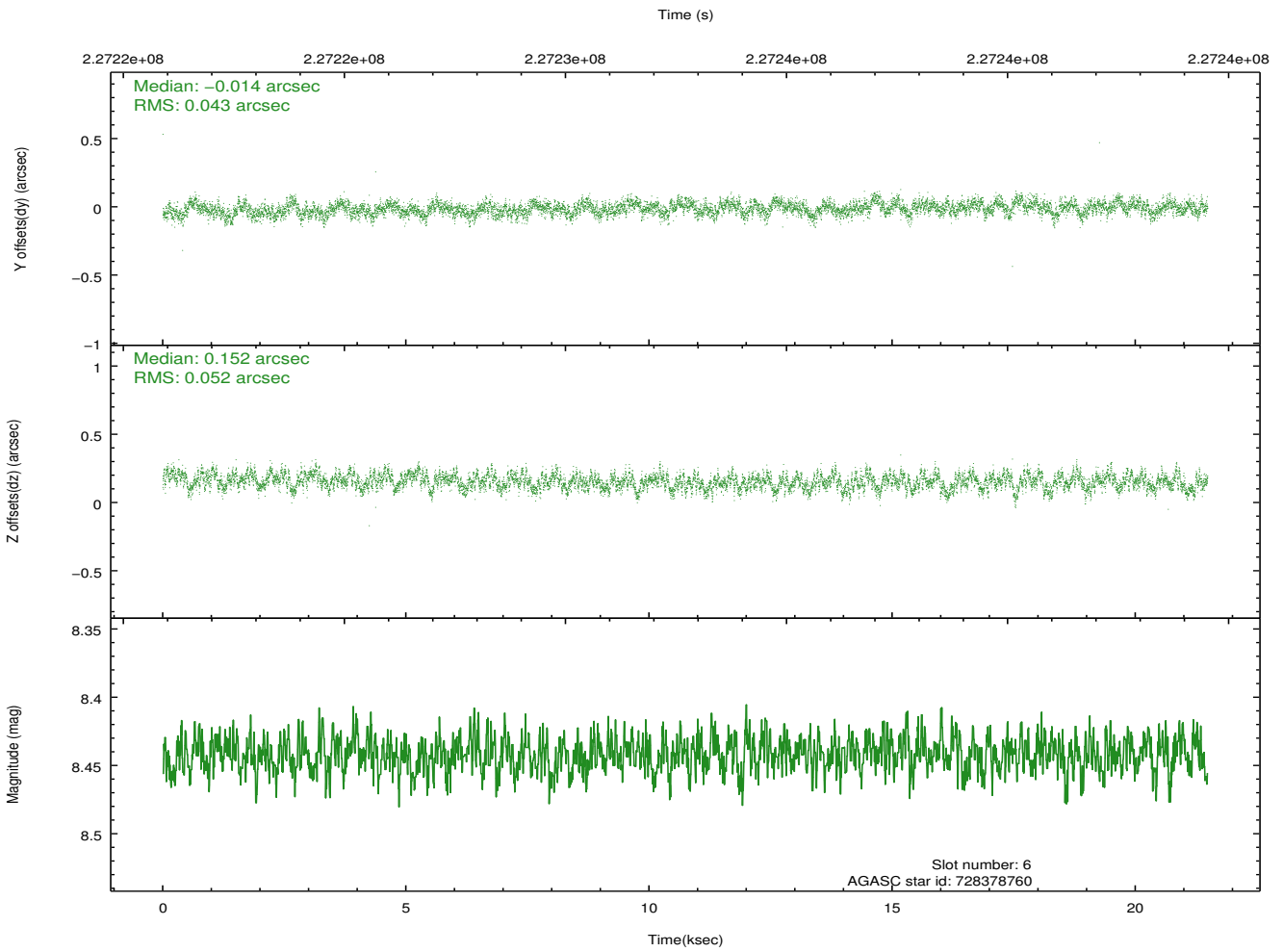
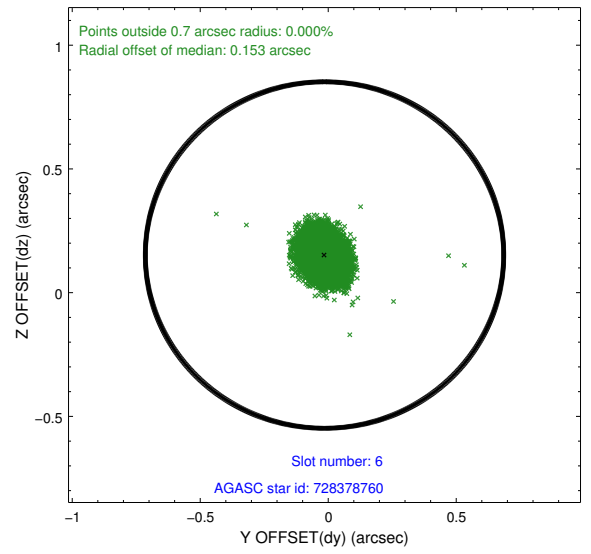
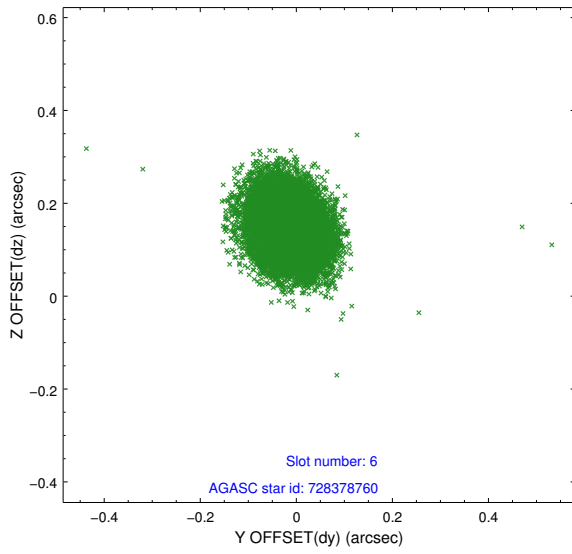
2.4.2 Slot 4



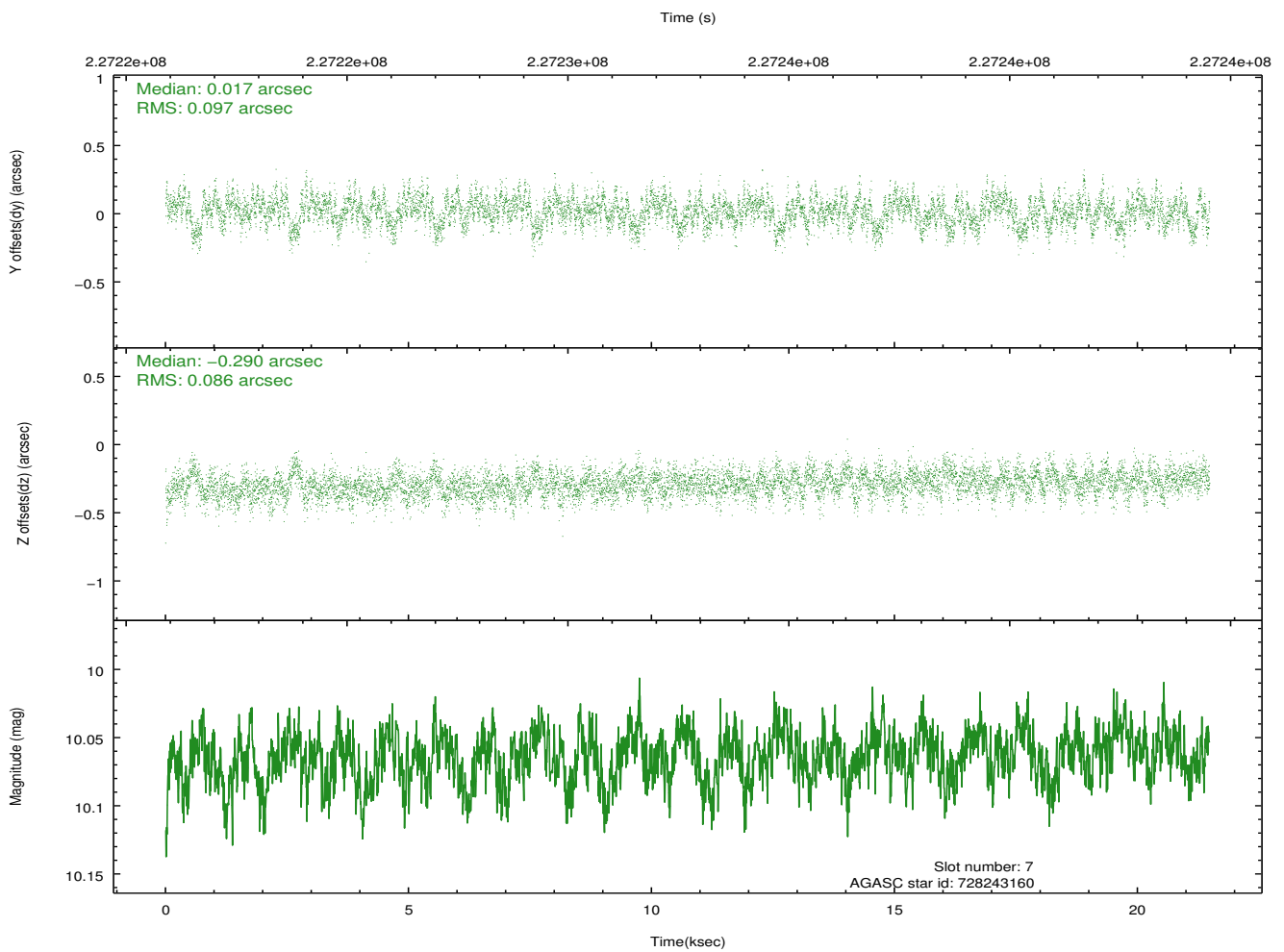
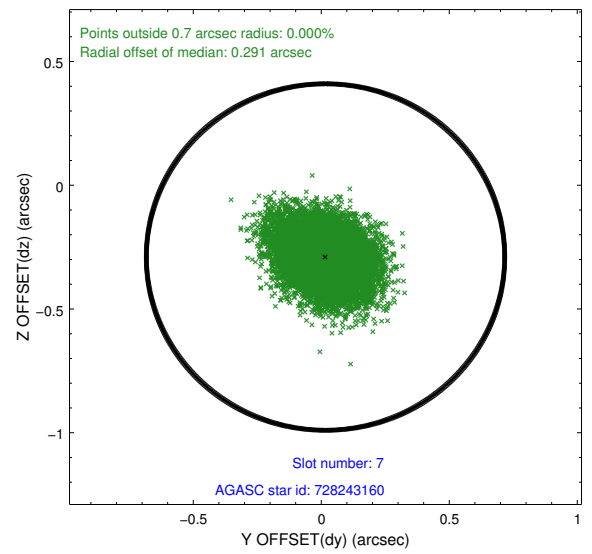
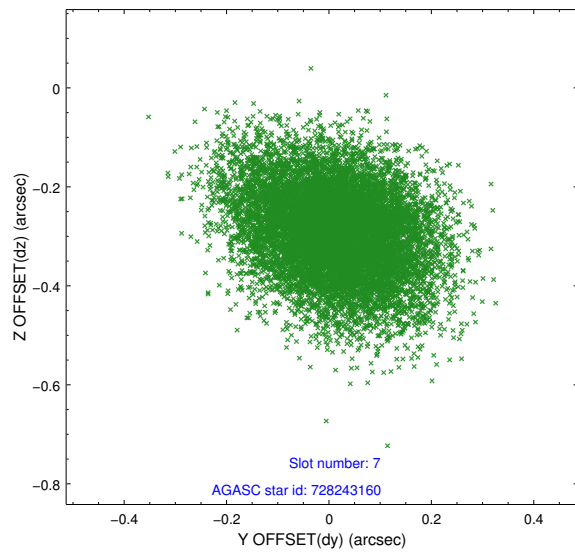
2.4.3 Slot 5



2.4.4 Slot 6

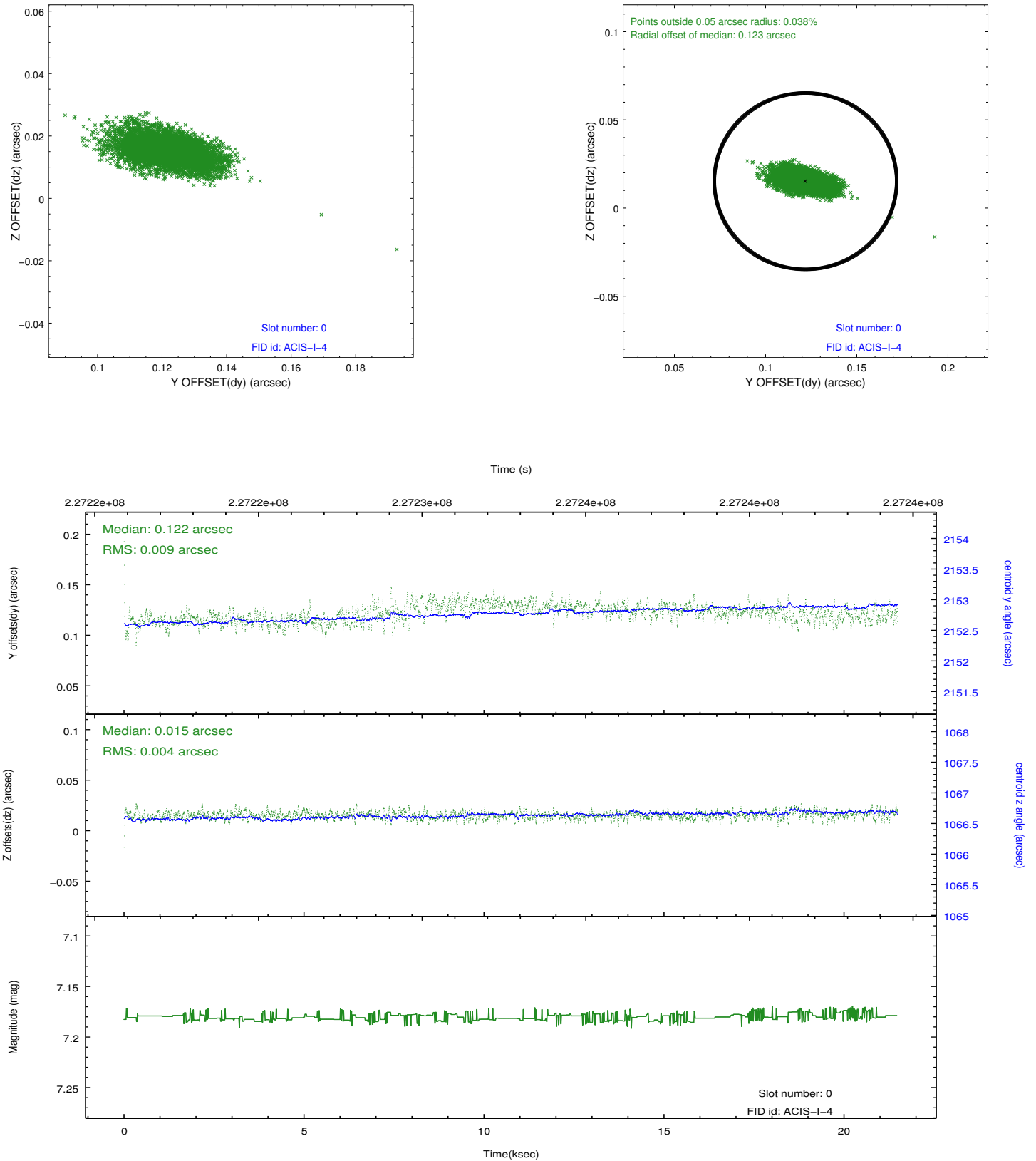


2.4.5 Slot 7

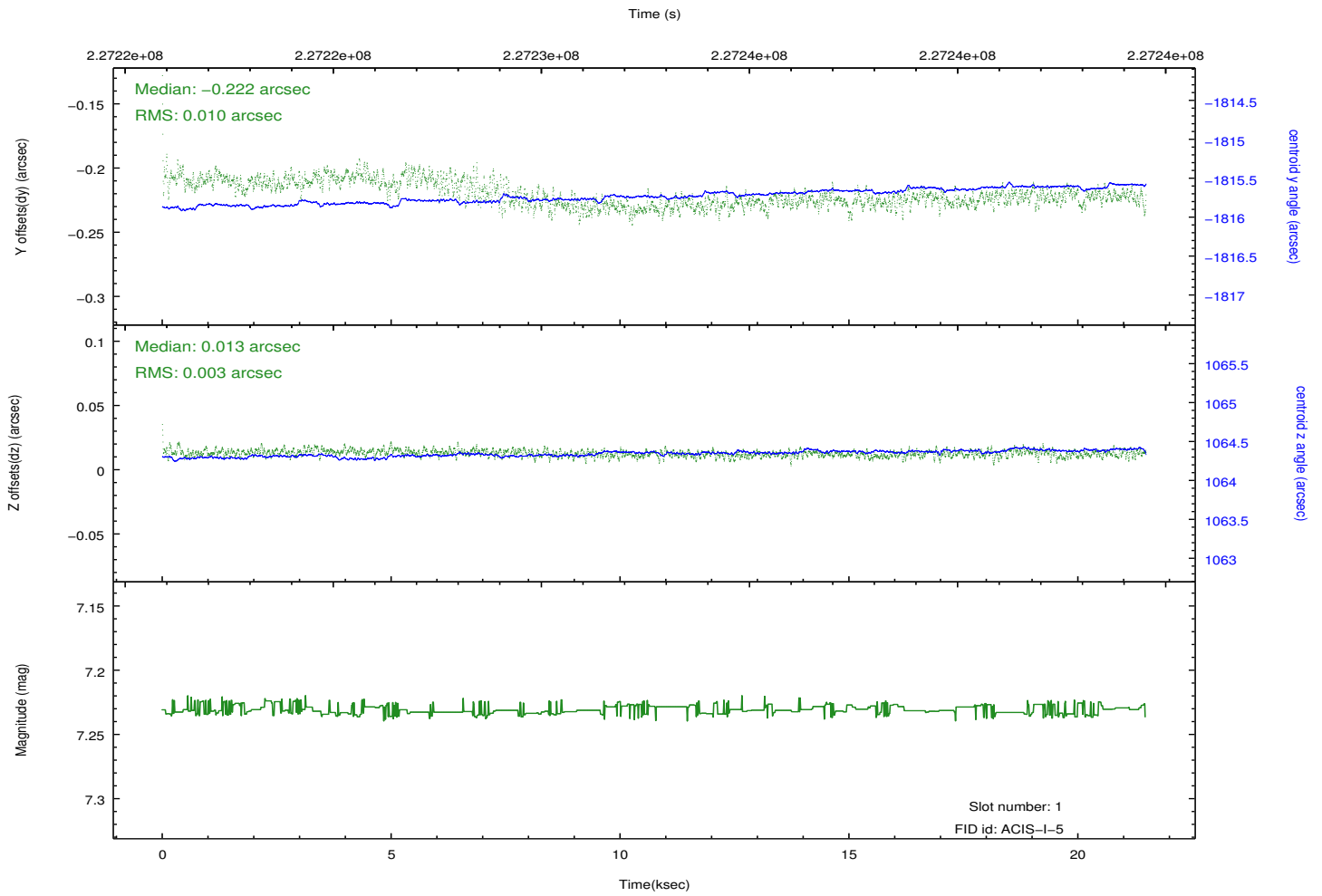
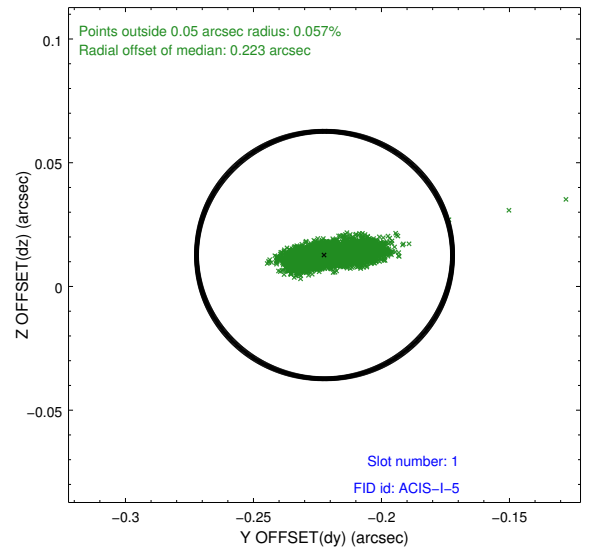
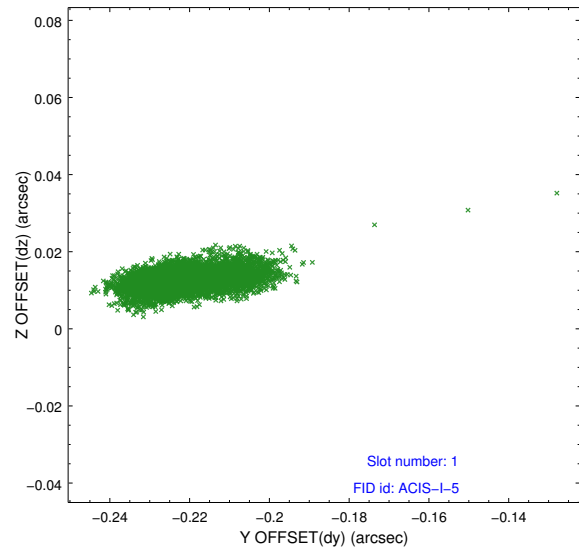


2.5 FID Slots

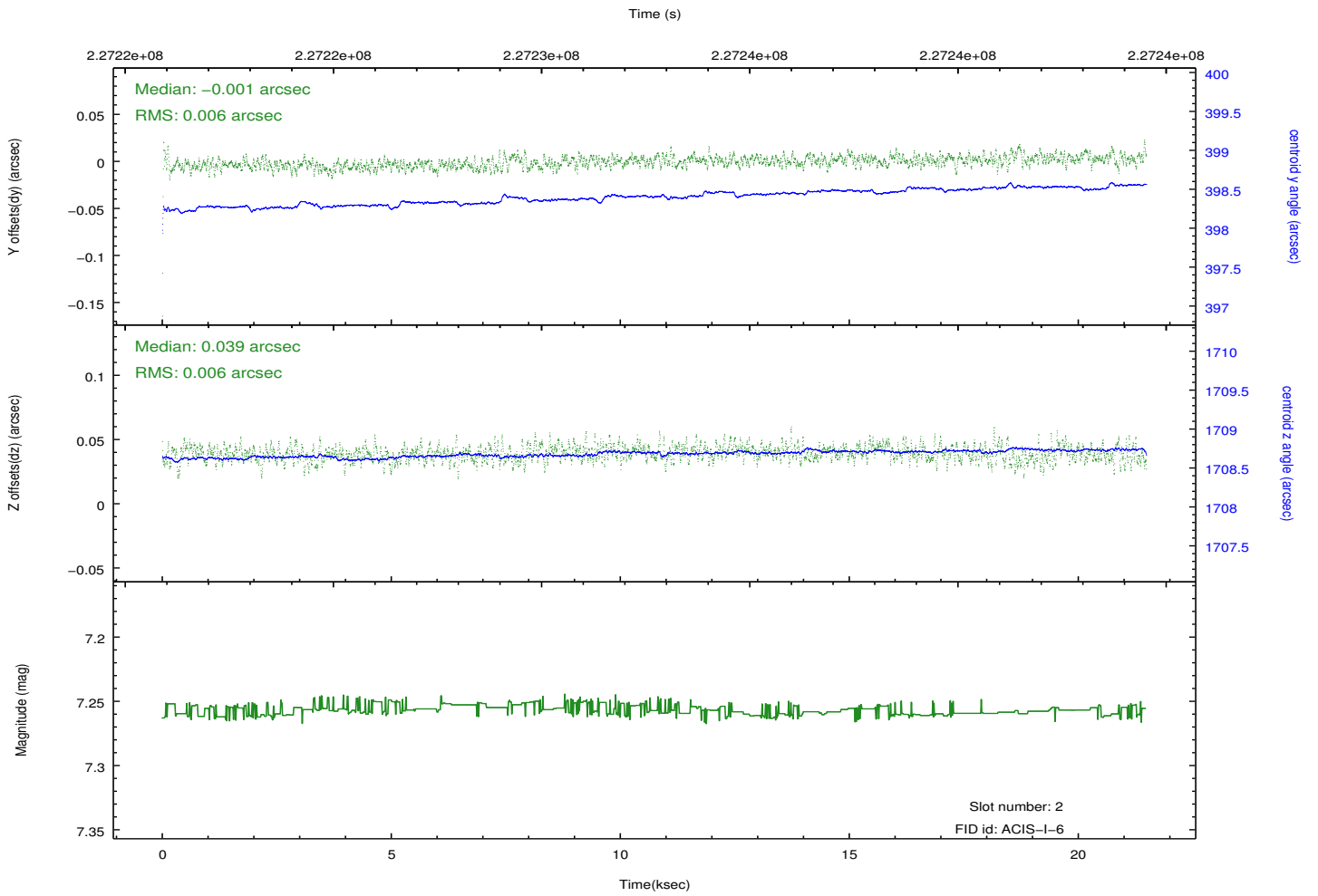
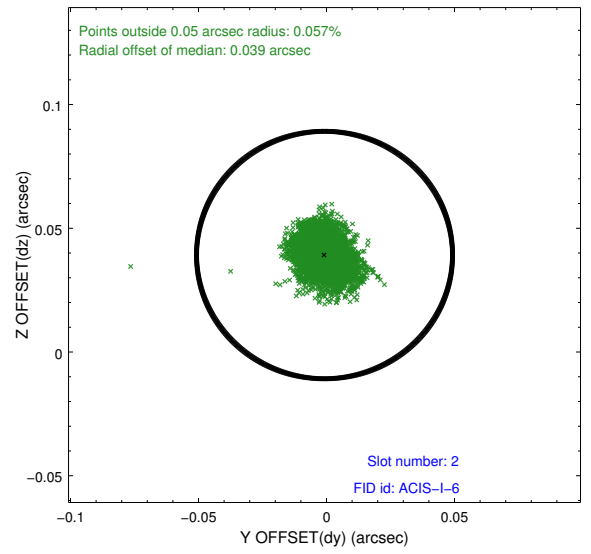
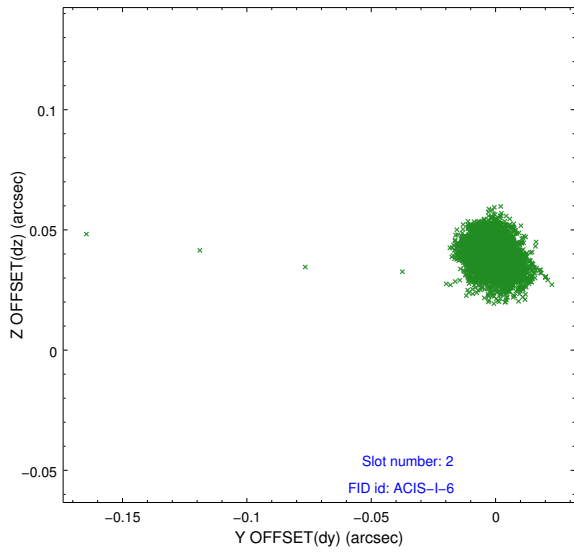
2.5.1 Slot 0



2.5.2 Slot 1



2.5.3 Slot 2



A Summary

A.1 Status

V&V Scientist	Jen Lauer
V&V Date (YYYY-MM-DD)	2013.01.11
V&V Edition	1
V&V Disposition and Status	OK
V&V Charge Time	21.47989

A.2 Comments