

V&V Reference Report

L2 ASCDS Version : 8.5.1.1

Observation 59494 - L2 Version 3
Chandra X-Ray Center

L2 Processing Date : Dec 27 2012

Contents

1	Front	2
2	OBI	3
2.1	OBI	3
2.1.1	Images	3
2.1.2	Bias	3
2.1.3	Parameters	4
2.1.4	Events	4
2.2	Compared Parameters	5
2.3	Star Slots	6
2.4	FID Slots	6
A	Summary	7
A.1	Status	7
A.2	Comments	7

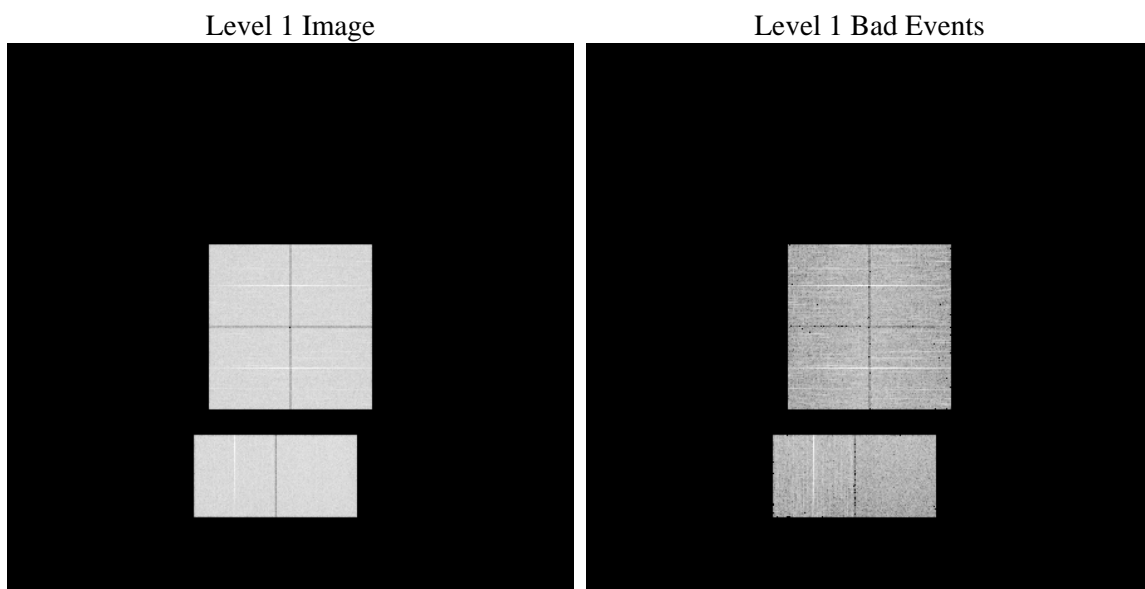
1 Front

seq_num	 	Sequence number
obs_id	59494	Observation id
title	ACIS-012367 diagnostics	Proposal title
observer	CHANDRA engineering request/realtime commanding	Principal investig
object	 	Source name
dtycle	0	
cycle	P	events from which exps? Prim/Second/Both
ra_targ	0.0	Observer's specified target RA [deg]
dec_targ	0.0	Observer's specified target Dec [deg]
ra_nom	354.99940440054	Nominal RA [deg]
dec_nom	-28.971356628736	Nominal Dec [deg]
roll_nom	58.172344175304	Nominal Roll [deg]
revision	3	Processing version of data
ontime	6719.999974966	Sum of GTIs [s]
livetime	6634.9072889848	Livetime [s]
ontime0	6710.2770339847	Sum of GTIs [s]
ontime1	6697.312913835	Sum of GTIs [s]
ontime2	6661.6622595787	Sum of GTIs [s]
ontime3	6661.6620010734	Sum of GTIs [s]
ontime6	6719.999974966	Sum of GTIs [s]
ontime7	6719.999974966	Sum of GTIs [s]
l2events	867666	Number of level 2 events

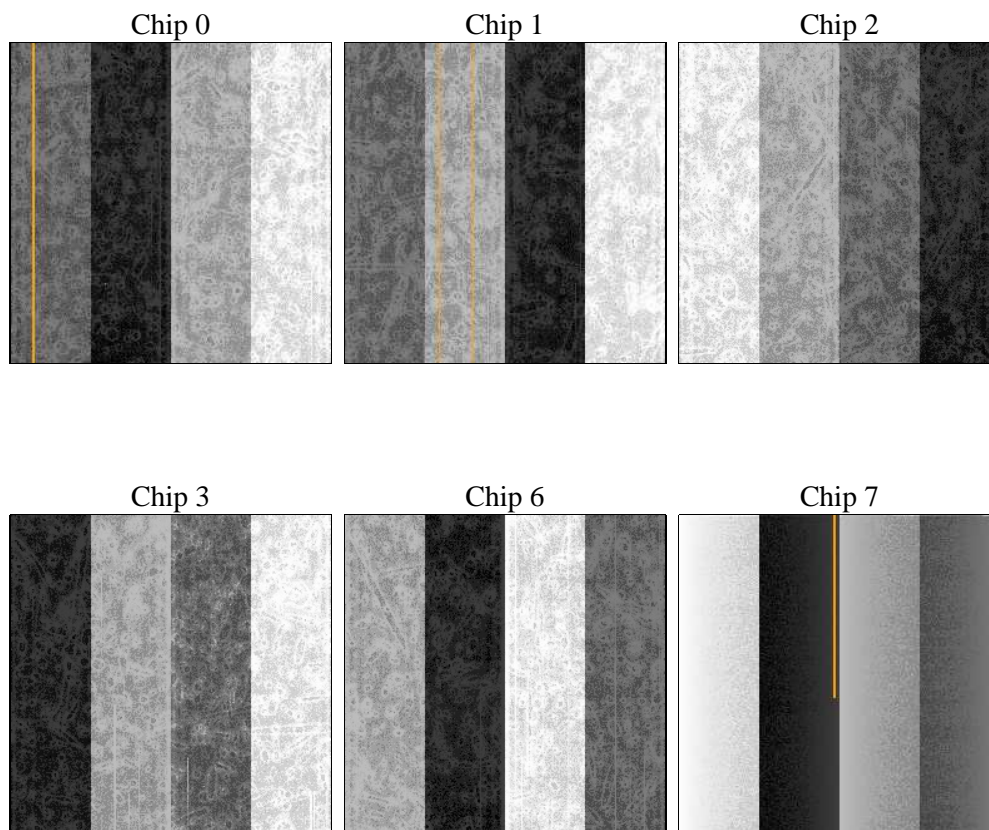
2 OBI

2.1 OBI

2.1.1 Images



2.1.2 Bias



2.1.3 Parameters

obi_num	0	Obi number	sched_exp_time	0.0	[s] Scheduled observation exposure time
ascdsver	8.5.1.1	Processing system revision	ontime	6719.999974966	Sum of GTIs [s]
caldbver	4.5.5	 	ontime0	6710.2770339847	Sum of GTIs [s]
date	2012-12-28T01:11:01	Date and time of file creation	ontime1	6697.312913835	Sum of GTIs [s]
			ontime2	6661.6622595787	Sum of GTIs [s]
revision	3	Processing version of data	ontime3	6661.6620010734	Sum of GTIs [s]
			ontime6	6719.999974966	Sum of GTIs [s]
			ontime7	6719.999974966	Sum of GTIs [s]
			l1events	1206445	Number of level 1 events

2.1.4 Events

	ccd 0	ccd 1	ccd 2	ccd 3	ccd 6	ccd 7		ccd 0	ccd 1	ccd 2	ccd 3	ccd 6	ccd 7
level 1 events	195126	195256	199259	198302	206479	212023	grade 0 events	80798	78706	84113	84116	80369	38944
rejected events	48341	47865	51454	50346	53133	42580		41%	40%	42%	42%	38%	18%
rejected %	24%	24%	25%	25%	25%	20%	grade 1 events	457	371	539	511	335	115
								0%	0%	0%	0%	0%	0%
							grade 2 events	25265	28202	23062	23705	29413	37614
								12%	14%	11%	11%	14%	17%
							grade 3 events	9468	9254	9881	9633	9143	16611
								4%	4%	4%	4%	4%	7%
							grade 4 events	9393	9083	9728	9752	9239	16187
								4%	4%	4%	4%	4%	7%
							grade 5 events	2691	2844	2666	2993	3064	7214
								1%	1%	1%	1%	1%	3%
							grade 6 events	21861	22146	21021	20750	25182	60087
								11%	11%	10%	10%	12%	28%
							grade 7 events	45193	44650	48249	46842	49734	35251
								23%	22%	24%	23%	24%	16%

2.2 Compared Parameters

Parameter	Planned	Actual	Parameter	Planned	Actual
Instrument	ACIS	ACIS	Obspar format version number	7	7
Detector	ACIS-012367	ACIS-012367	Obspar file type	PREDICTED	ACTUAL
Grating	NONE	NONE	Obspar update status	NONE	UPDATED
Data mode	FAINT	FAINT	On-chip summing requested	N	N
Observation mode	SECONDARY	SECONDARY	Subarray requested	NONE	NONE
[deg] Pointing RA	0	354.9994044005423	Alternating exposures requested	N	N
[deg] Pointing Dec	0	-28.97135662873603	[s] Primary exposure time	3.2	3.2
[deg] Pointing Roll	0.0	58.1723441753043			
[mm] SIM focus pos	-0.782348	-0.6828225247311905			
[mm] SIM defocus	0	0.8505141146731063			
[mm] SIM translation stage pos	-233.592463	250.466033080201			
[mm] SIM translation stage offset	0	-0.01005468664627074			
[s] Observation start time (MET)	241021555.251153	241021554.22614			
Observation start date	2005-08-21T14:25:55	2005-08-21T14:25:54			
[s] Observation end time (MET)	241037945.001906	241037943.97689			
Observation end date	2005-08-21T18:59:05	2005-08-21T18:59:03			
Read mode	TIMED	TIMED			

2.3 Star Slots

2.4 FID Slots

A Summary

A.1 Status

V&V Scientist	Jen Lauer
V&V Date (YYYY-MM-DD)	2013.01.24
V&V Edition	1
V&V Disposition and Status	OK
V&V Charge Time	6.719999974966

A.2 Comments