

V&V Reference Report

L2 ASCDS Version : 8.5.1.1

Observation 6094 - L2 Version 6
Chandra X-Ray Center

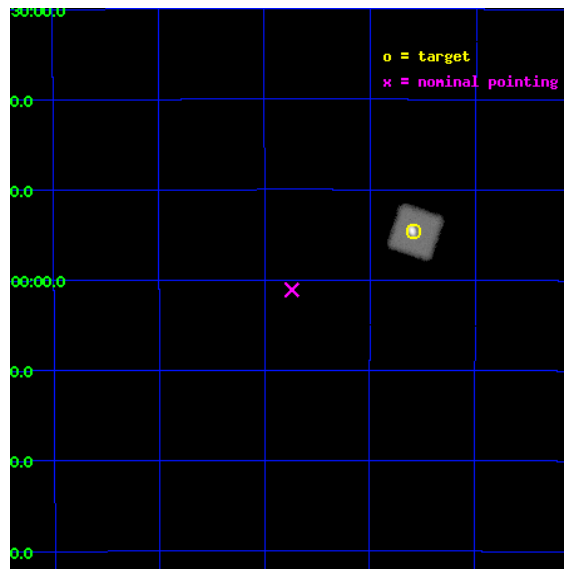
L2 Processing Date : Dec 24 2012

Contents

1	Front	2
2	OBI	3
2.1	OBI	3
2.1.1	Images	3
2.1.2	Parameters	4
2.1.3	Events	4
2.2	Compared Parameters	5
2.3	Aspect	6
2.4	Star Slots	9
2.4.1	Slot 3	9
2.4.2	Slot 4	10
2.4.3	Slot 5	11
2.4.4	Slot 6	12
2.4.5	Slot 7	13
2.5	FID Slots	14
2.5.1	Slot 0	14
2.5.2	Slot 1	15
A	Summary	16
A.1	Status	16
A.2	Comments	16

1 Front

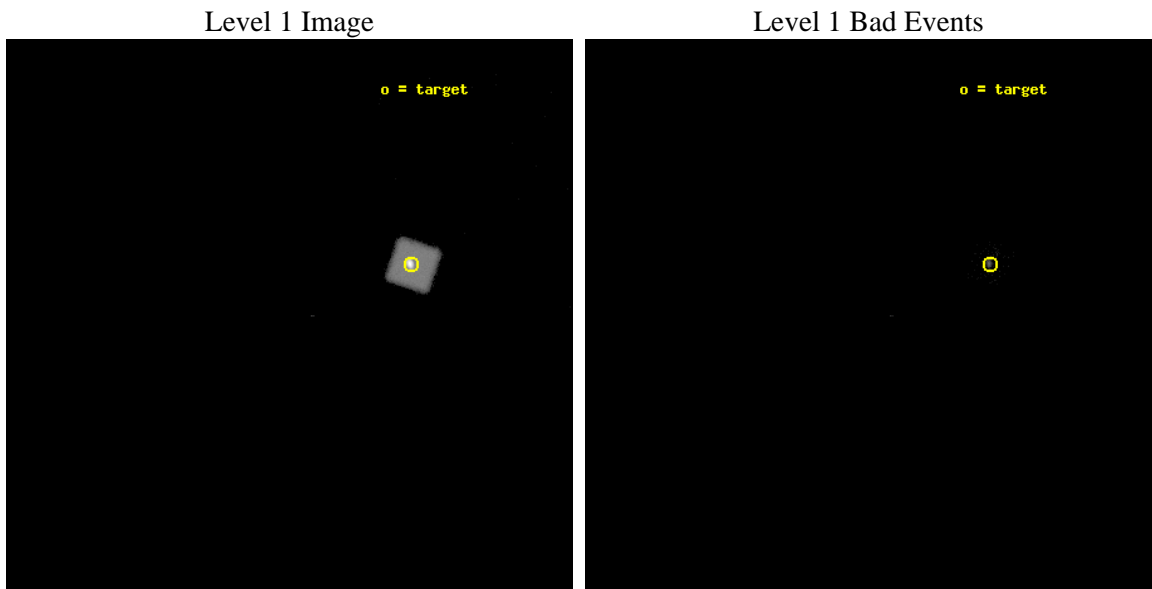
seq_num	990005	Sequence number
obs_id	6094	Observation id
title	AO6 Calibration Observations of the ACIS charged particle background	
observer	Dr. CXC Calibration	Principal investigator
object	RXJ1856.5-3754	Source name
ra_targ	284.147083	Observer's specified target RA [deg]
dec_targ	-37.909611	Observer's specified target Dec [deg]
ra_nom	284.43487741993	Nominal RA [deg]
dec_nom	-38.018457193991	Nominal Dec [deg]
roll_nom	63.491369648113	Nominal Roll [deg]
revision	6	Processing version of data
ontime	49478.033510983	[s]
livetime	42164.406580138	Ontime multiplied by DTCOR
l2events	108740	Number of level 2 events



2 OBI

2.1 OBI

2.1.1 Images



2.1.2 Parameters

obi_num	2	Obi number	sched_exp_time	50000.000000	[s] Scheduled observation exposure time
ascdsver	8.5.1.1	Processing system revision	ontime	49543.633510947	[s]
caldbver	4.5.5	 	l1events	126504	Number of level 1 events
date	2012-12-24T15:47:24	Date and time of file creation			
revision	6	Processing version of data			

2.1.3 Events

Level 1 Events

	segment 0
level 1 events	126504
rejected events	895
rejected %	0%

2.2 Compared Parameters

Parameter	Planned	Actual	Parameter	Planned	Actual
Instrument	HRC	HRC	Obspar format version number	7	7
Detector	HRC-I	HRC-I	Obspar file type	PREDICTED	ACTUAL
Grating	NONE	NONE	Obspar update status	OVERRIDE	OVERRIDE
Data mode	NEXT_IN_LINE	NEXT_IN_LINE			
Observation mode	POINTING	POINTING			
[deg] Pointing RA	284.4348617396508	284.4348774199281			
[deg] Pointing Dec	-38.01848207330258	-38.01845719399148			
[deg] Pointing Roll	63.49135998356311	63.49136964811331			
[s] Window start time (MET)	231292864.184000	231292864.184000			
[s] Window stop time (MET)	236476864.184000	236476864.184000			
[mm] SIM focus pos	-1.038866356238299	-1.038866356238299			
[mm] SIM defocus	0.00142623211714632	0.00142623211714632			
[mm] SIM translation stage pos	51.99352612095925	51.99352612095925			
[mm] SIM translation stage offset	74.99196818432856	74.99196818432856			
[s] Observation start time (MET)	234753024.184	234753024.184			
Observation start date	2005-06-10T01:09:20	2005-06-10T01:10:24			
[s] Observation end time (MET)	234803024.184	234803024.184			
Observation end date	2005-06-10T15:02:40	2005-06-10T15:03:44			

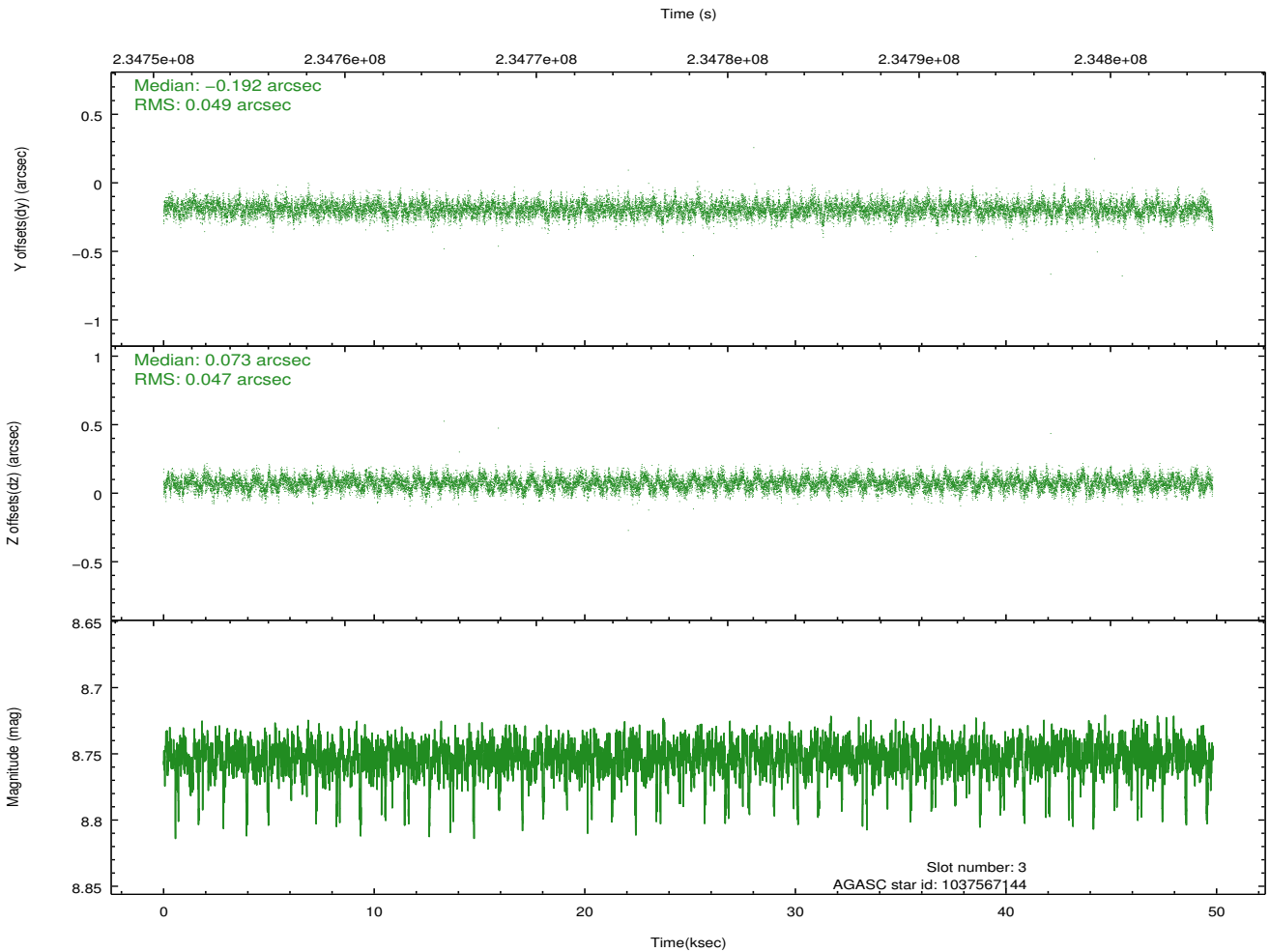
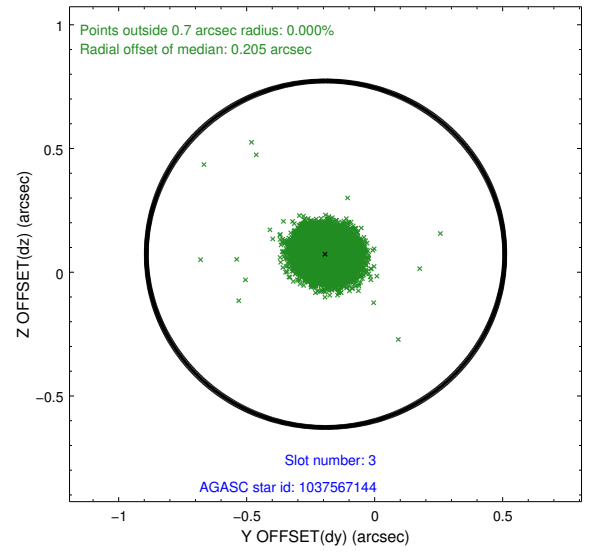
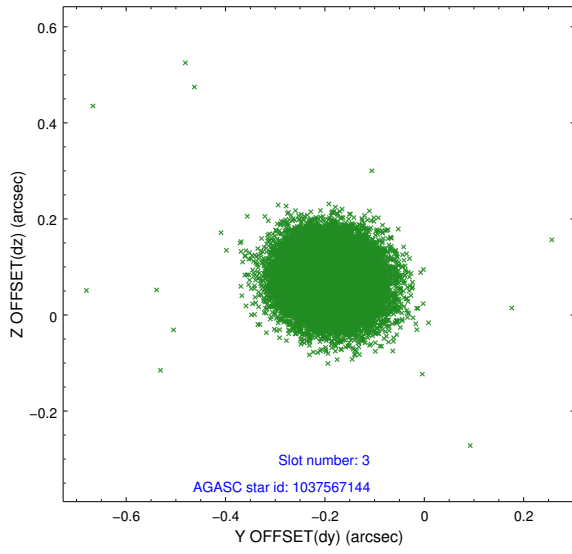
2.3 Aspect

Slot Statistics

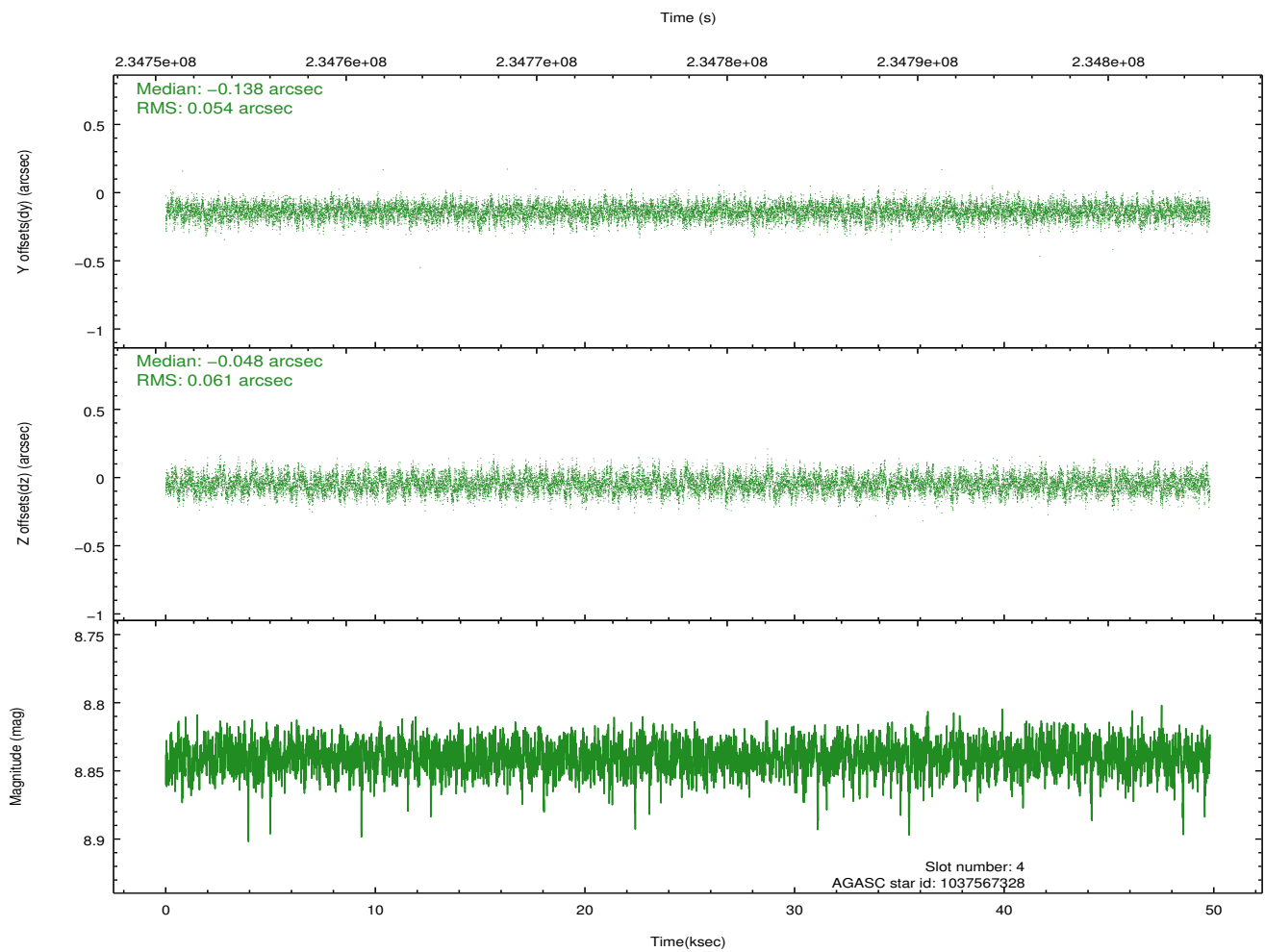
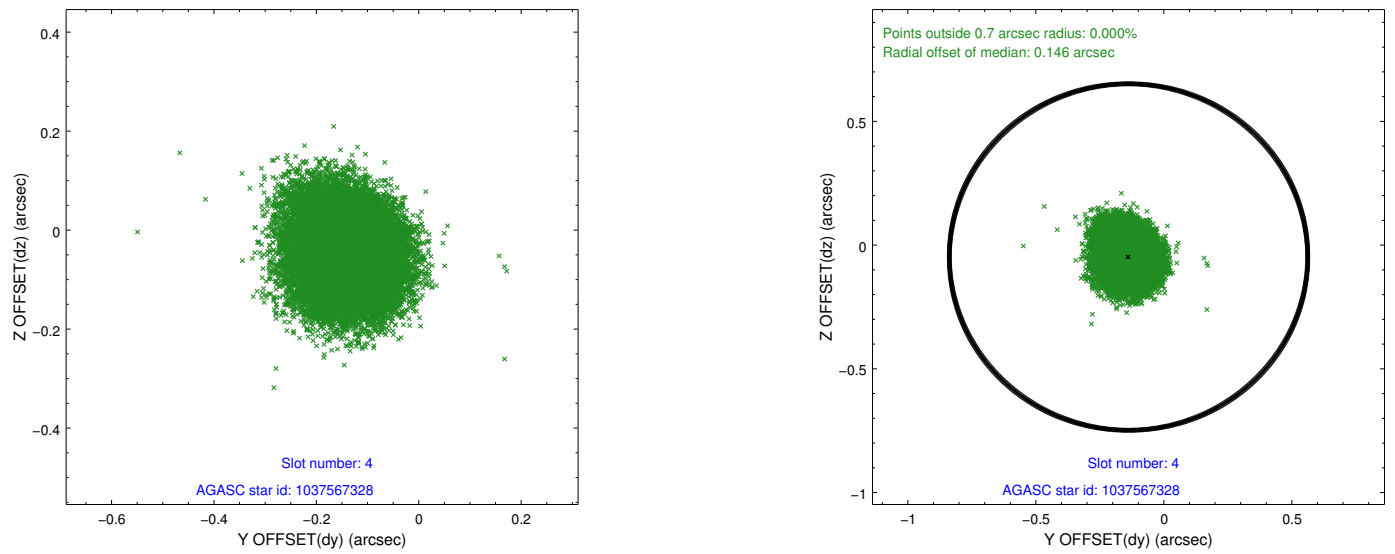
slot	status	id	mag	n_pts	med_dy	med_dz	dr1	dr2	ra	dec	mean_y	mean_z
0	FID	HRC-I-1	6.87	12151	-0.618	-0.028	0.004	0.009	0.000000	0.000000	-764.01	241.71
1	FID	HRC-I-2	7.01	12150	0.697	-0.026	0.004	0.009	0.000000	0.000000	846.79	242.72
2	UNUSED		0.00	0	0.000	0.000	0.000	0.000	0.000000	0.000000	0.00	0.00
3	GUIDE	1037567144	8.75	24293	-0.192	0.073	0.072	0.116	284.940440	-37.605390	2053.13	-580.83
4	GUIDE	1037567328	8.84	24292	-0.138	-0.048	0.087	0.140	284.052016	-37.647288	792.79	1621.45
5	GUIDE	1037576824	8.72	24293	0.002	-0.108	0.071	0.113	284.177029	-38.323536	-1224.87	213.86
6	GUIDE	1037578168	8.11	24300	0.073	0.049	0.069	0.111	284.493659	-38.169059	-329.02	-339.79
7	GUIDE	1037583776	9.61	24283	0.257	0.033	0.119	0.195	283.709166	-38.488656	-2349.05	1125.66

2.4 Star Slots

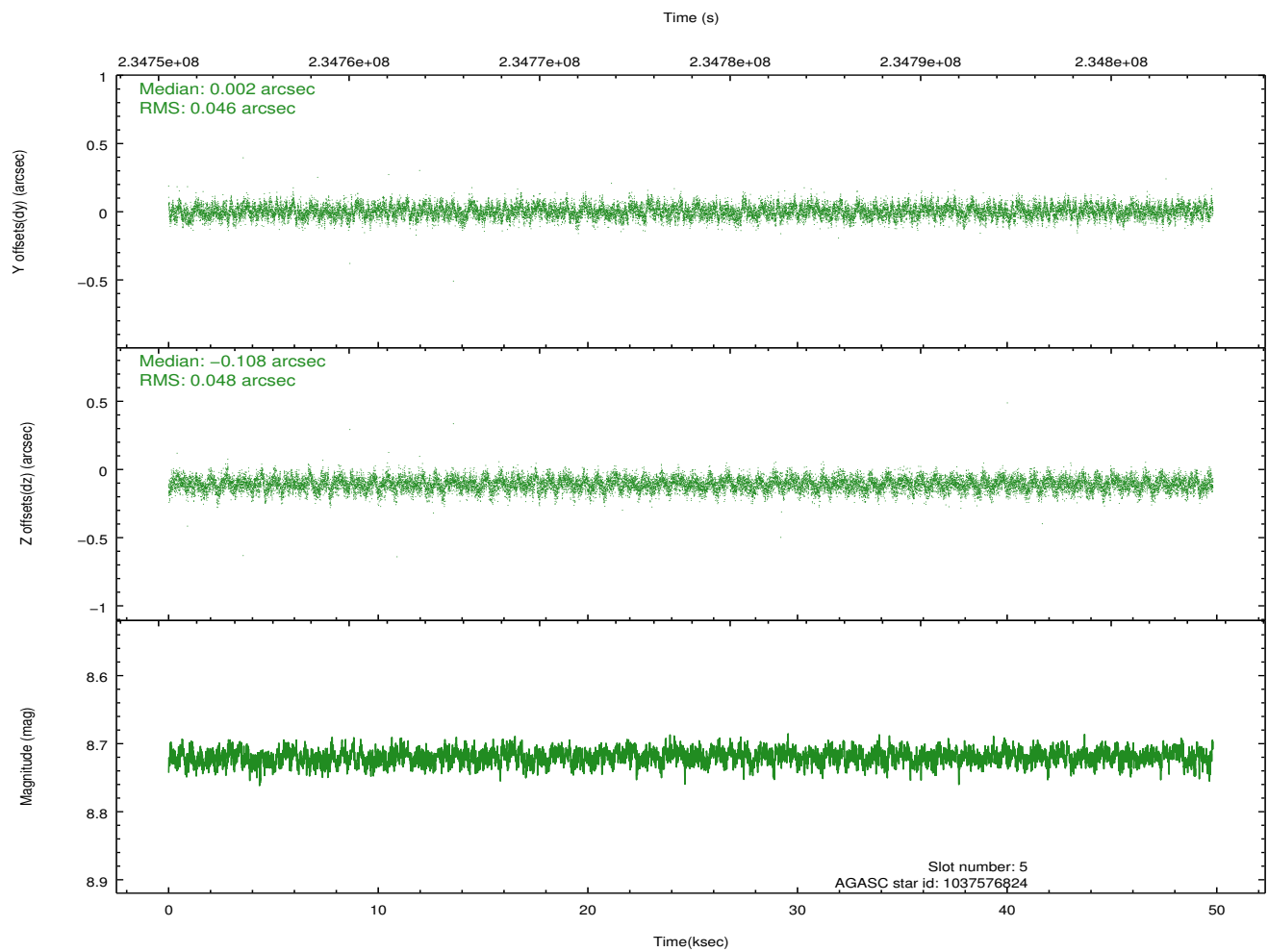
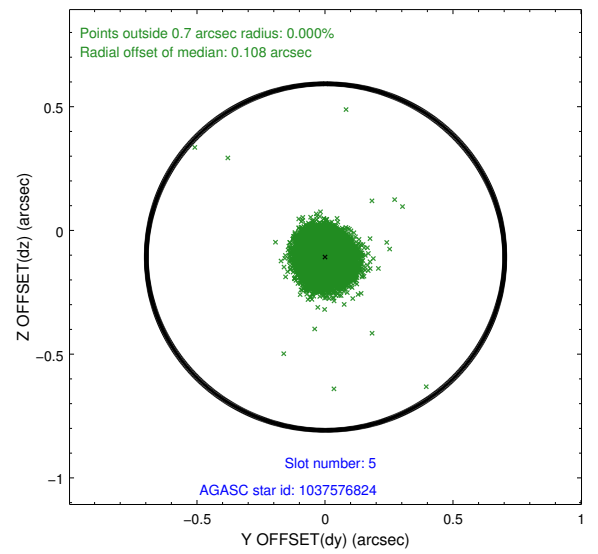
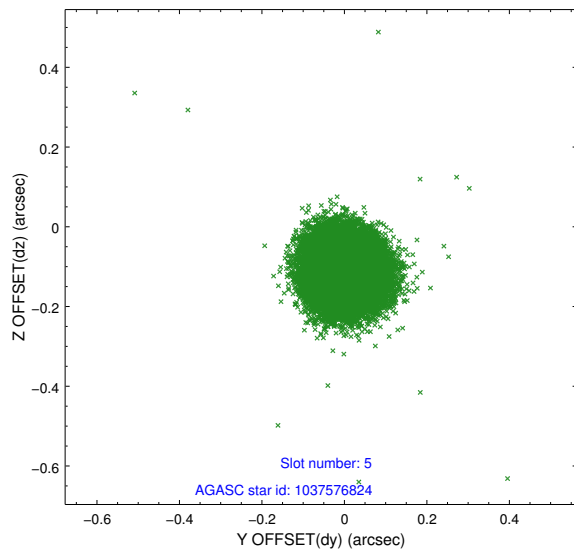
2.4.1 Slot 3



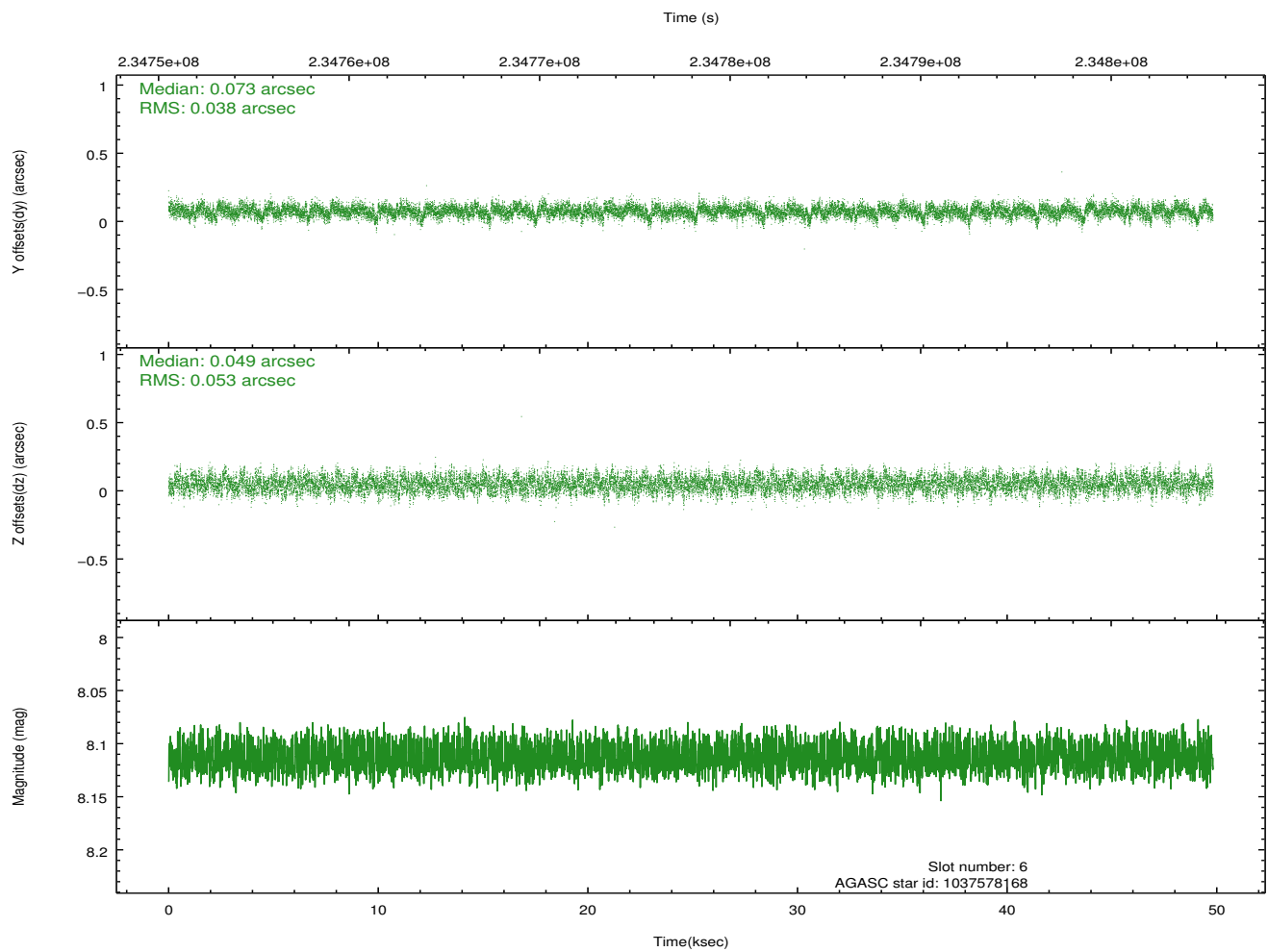
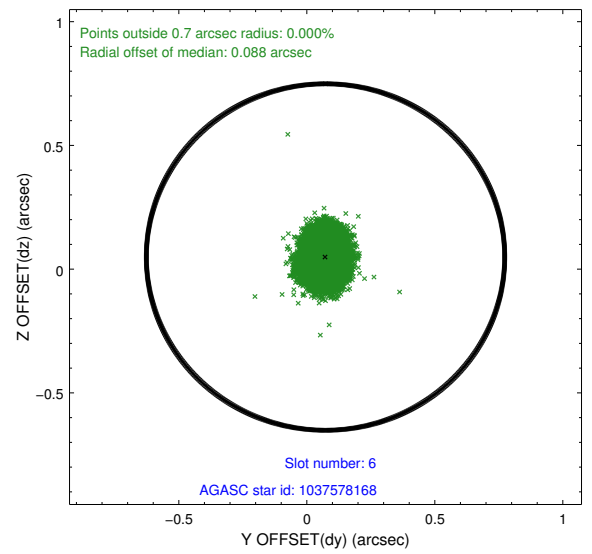
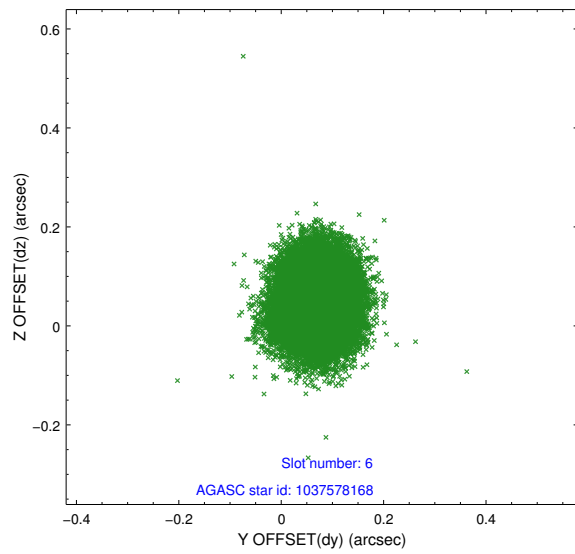
2.4.2 Slot 4



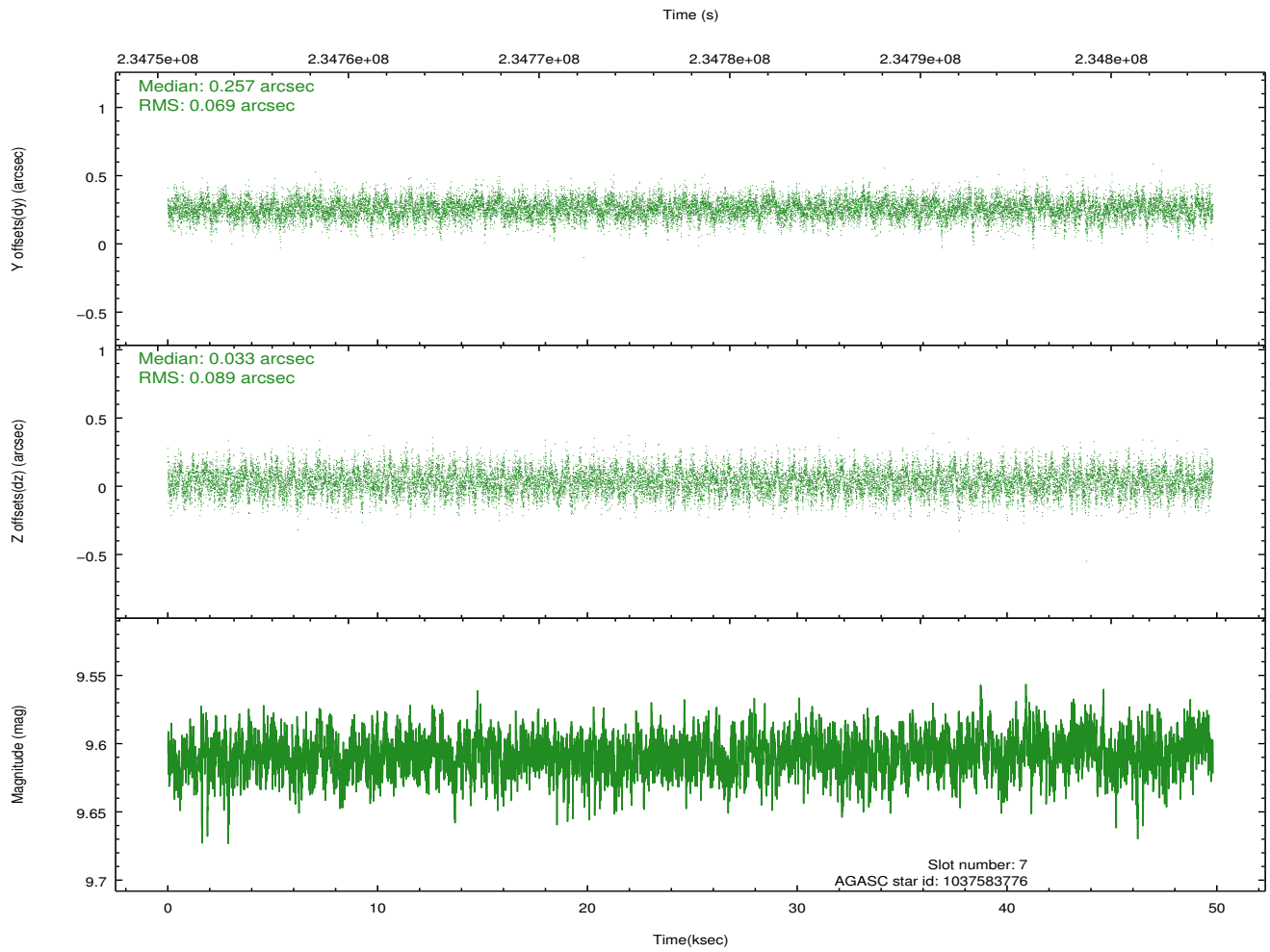
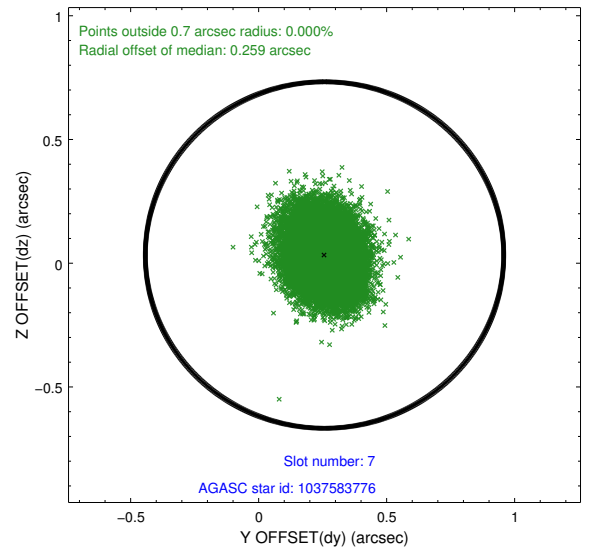
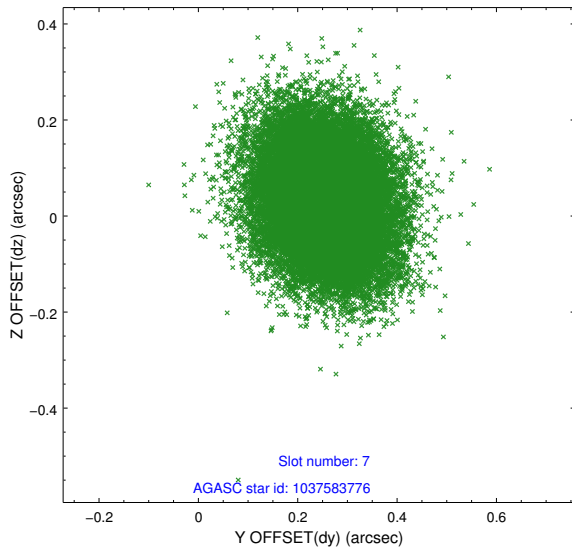
2.4.3 Slot 5



2.4.4 Slot 6

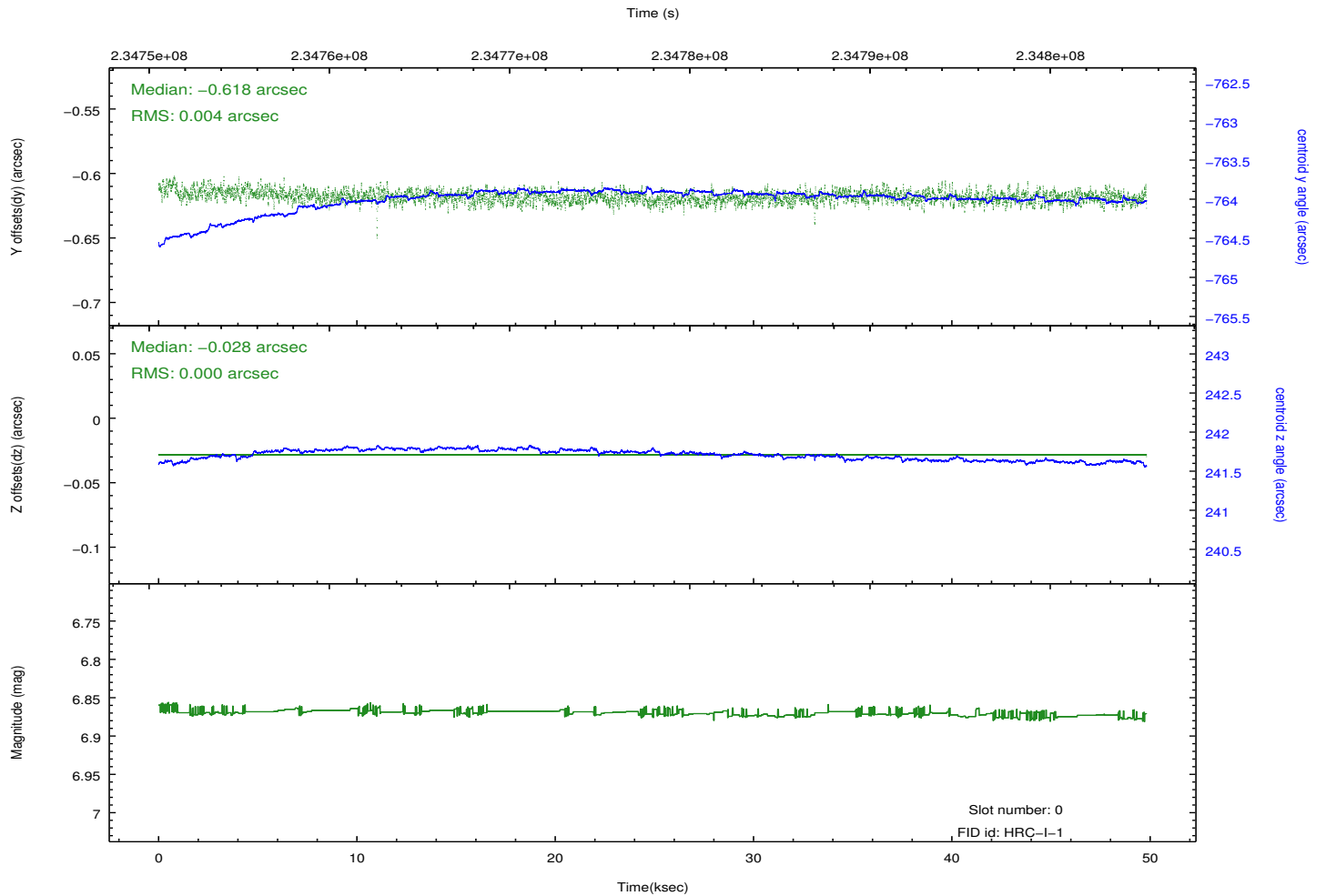
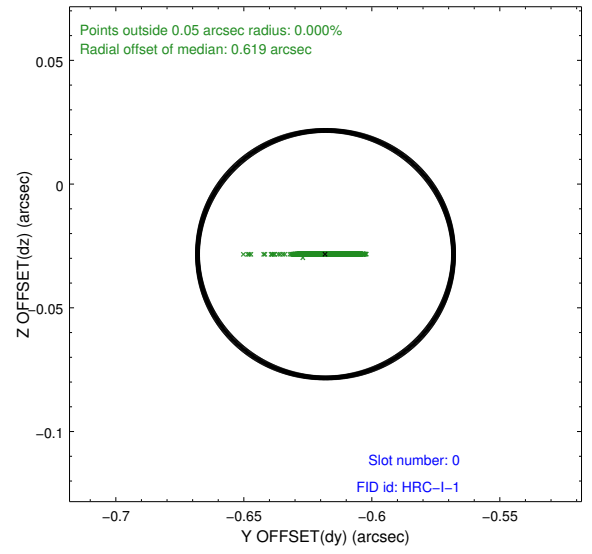
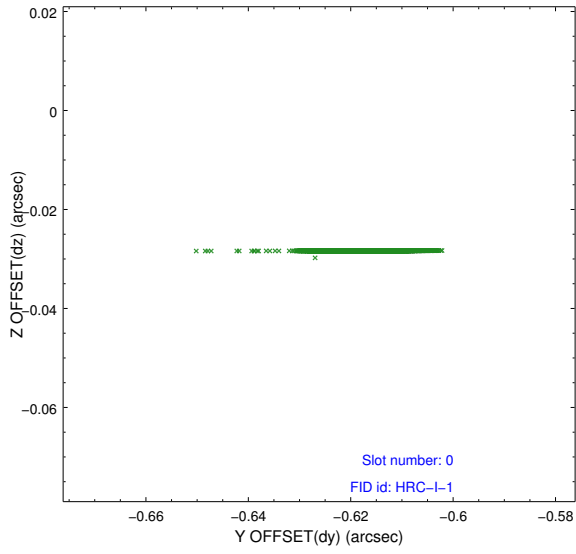


2.4.5 Slot 7

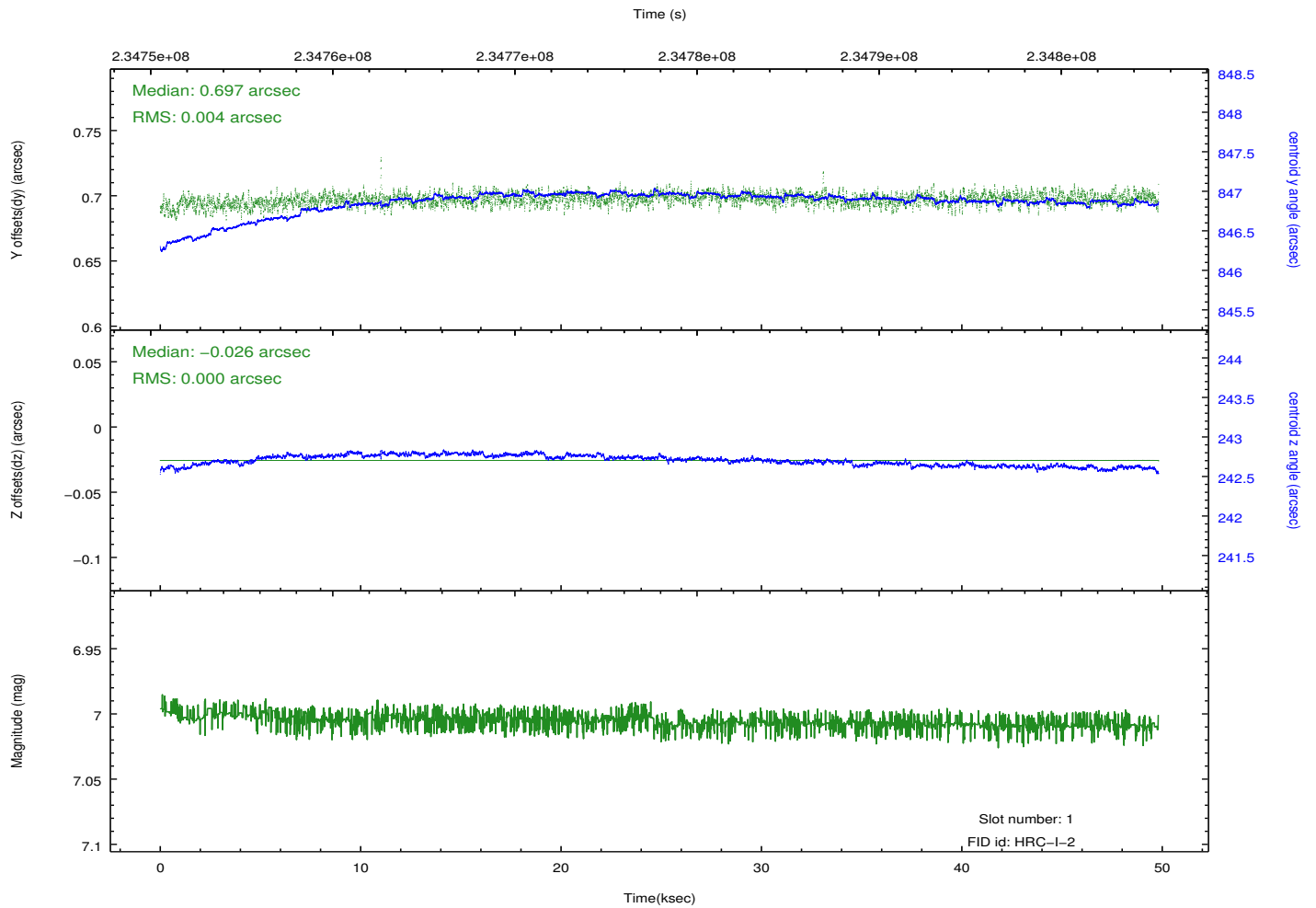
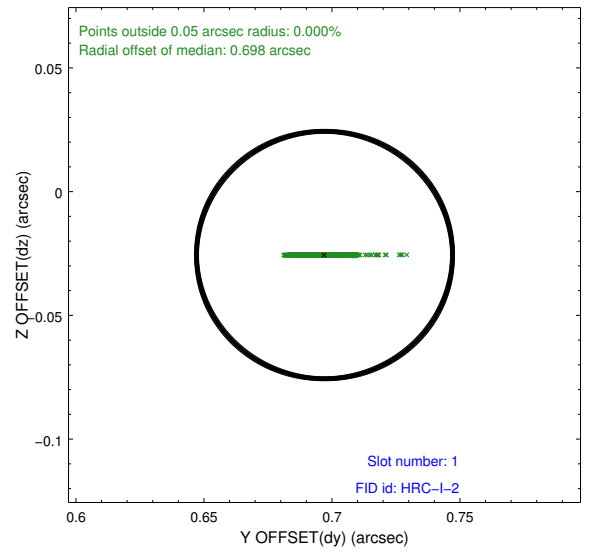
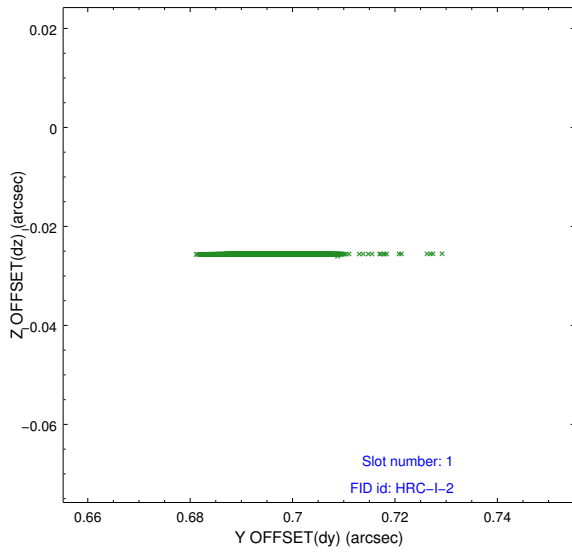


2.5 FID Slots

2.5.1 Slot 0



2.5.2 Slot 1



A Summary

A.1 Status

V&V Scientist	Jen Lauer
V&V Date (YYYY-MM-DD)	2013.01.17
V&V Edition	1
V&V Disposition and Status	OK
V&V Charge Time	49.47803

A.2 Comments

Window constraint met. ACIS undercover observation, override obspar used, HRC in NEXT_IN_LINE mode. Chip is far off-axis due to calibration mode used. Window constraint met. Only two fid lights were used for this observation. Large fid radial offsets are of the large SIM offset.