

# V&V Reference Report

## L2 ASCDS Version : 8.5.1

Observation 6154 - L2 Version 3  
Chandra X-Ray Center

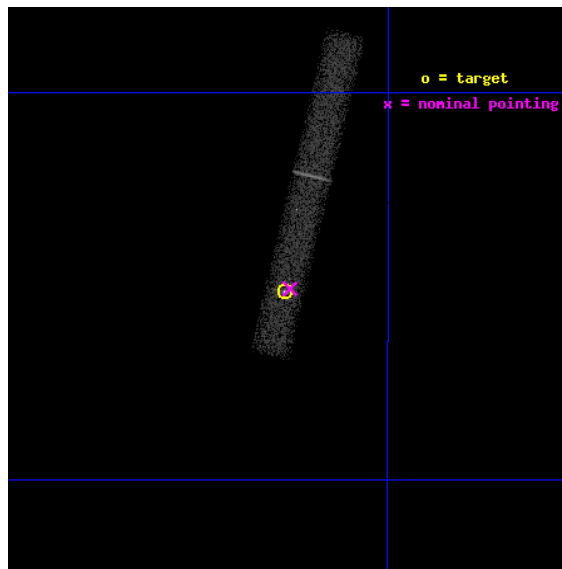
L2 Processing Date : Dec 18 2012

## Contents

<b>1</b>	<b>Front</b>	<b>2</b>
<b>2</b>	<b>OBI</b>	<b>3</b>
2.1	OBI . . . . .	3
2.1.1	Images . . . . .	3
2.1.2	Bias . . . . .	3
2.1.3	Parameters . . . . .	4
2.1.4	Events . . . . .	4
2.2	Compared Parameters . . . . .	5
2.3	Aspect . . . . .	6
2.4	Star Slots . . . . .	9
2.4.1	Slot 3 . . . . .	9
2.4.2	Slot 4 . . . . .	10
2.4.3	Slot 5 . . . . .	11
2.4.4	Slot 6 . . . . .	12
2.4.5	Slot 7 . . . . .	13
2.5	FID Slots . . . . .	14
2.5.1	Slot 0 . . . . .	14
2.5.2	Slot 1 . . . . .	15
2.5.3	Slot 2 . . . . .	16
<b>A</b>	<b>Summary</b>	<b>17</b>
A.1	Status . . . . .	17
A.2	Comments . . . . .	17

# 1 Front

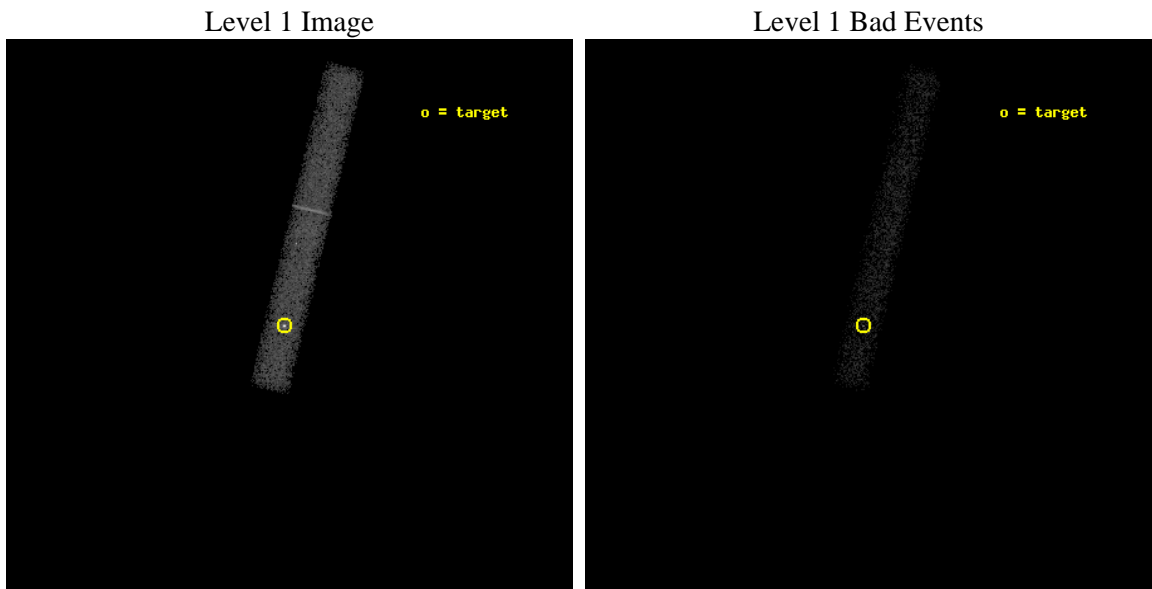
seq_num	590415	Sequence number
obs_id	6154	Observation id
title	Calibrating Pile-up in ACIS Imaging Data with PSRJ0437-4715	Propos
observer	Dr. CXC Calibration	Principal investigator
object	PSR J0437-4715	Source name
dtcycle	0	&#160
cycle	P	events from which exps? Prim/Second/Both
ra_targ	69.315833	Observer's specified target RA [deg]
dec_targ	-47.252333	Observer's specified target Dec [deg]
ra_nom	69.31295858527	Nominal RA [deg]
dec_nom	-47.251298801059	Nominal Dec [deg]
roll_nom	283.41203723242	Nominal Roll [deg]
revision	3	Processing version of data
ontime	25187.600375295	Sum of GTIs [s]
livetime	22843.824029834	Livetime [s]
ontime7	25187.600375295	Sum of GTIs [s]
l2events	17689	Number of level 2 events



## 2 OBI

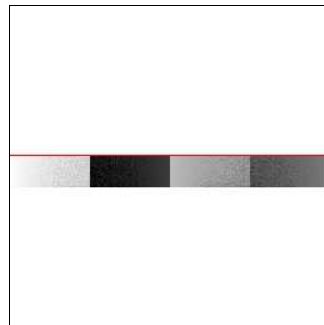
### 2.1 OBI

#### 2.1.1 Images



#### 2.1.2 Bias

Chip 7



### 2.1.3 Parameters

obi_num	1	Obi number	sched_exp_time	25000.000000	[s] Scheduled observation exposure time
ascdsver	8.5.1	Processing system revision	ontime	25187.600375295	Sum of GTIs [s]
caldbver	4.5.5	&#160	ontime7	25187.600375295	Sum of GTIs [s]
date	2012-12-17T18:12:10	Date and time of file creation	l1events	31025	Number of level 1 events
revision	3	Processing version of data			

### 2.1.4 Events

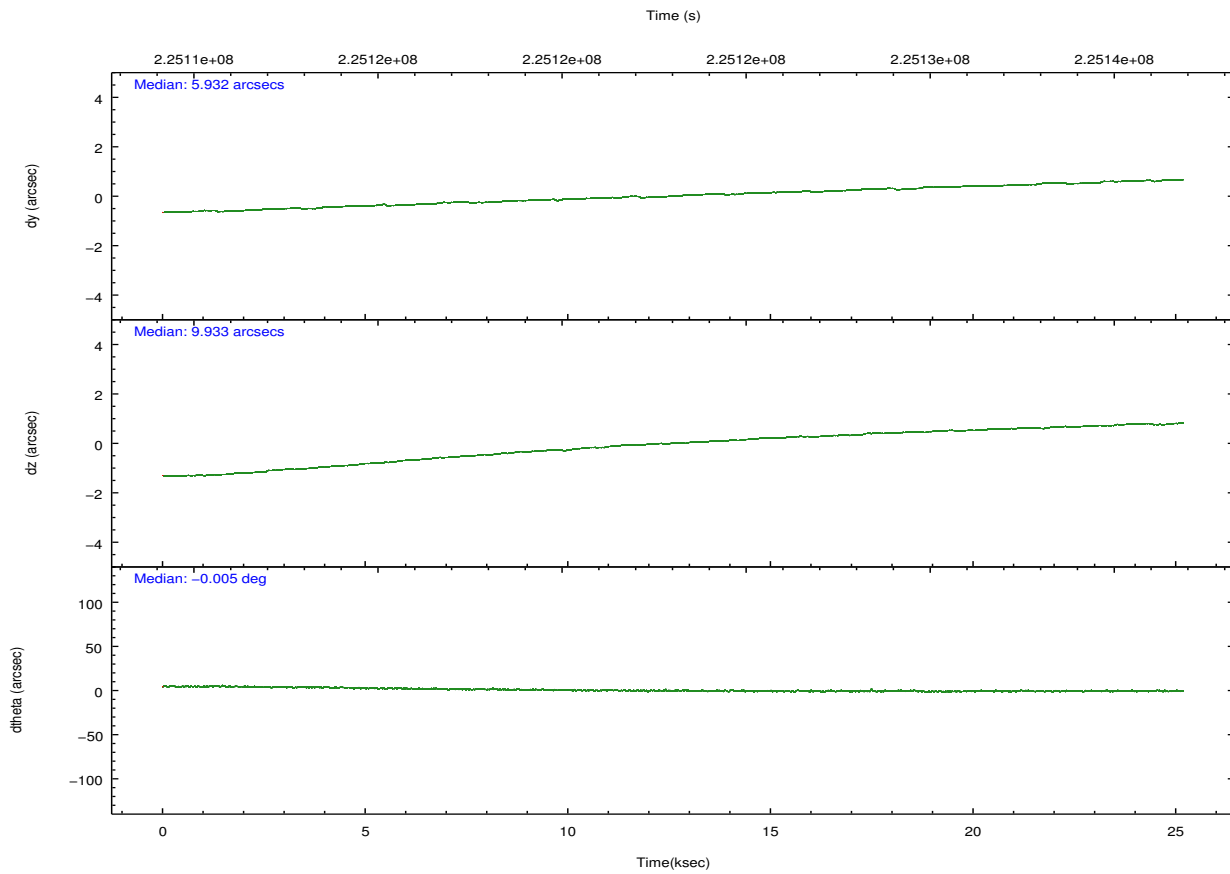
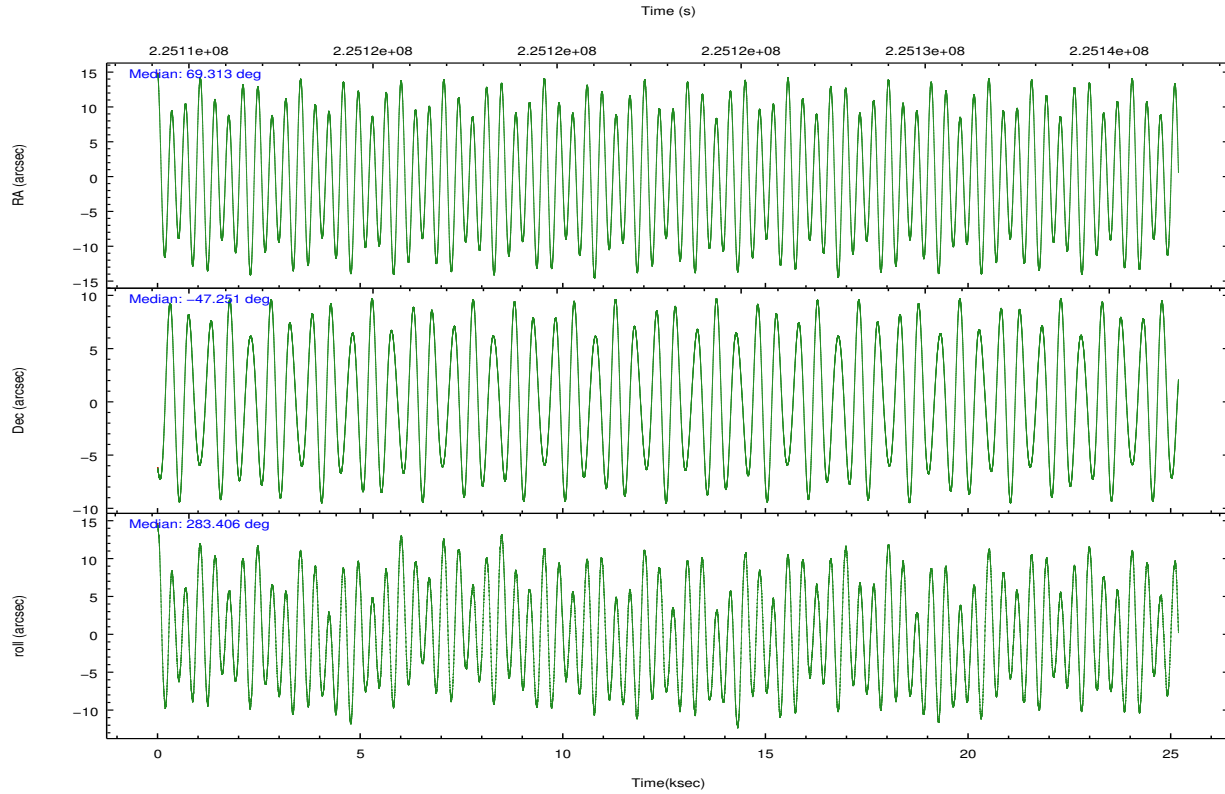
	<b>ccd 7</b>
level 1 events	31025
rejected events	12872
rejected %	<b>41%</b>

	<b>ccd 7</b>
grade 0 events	3996
	12%
grade 1 events	38
	0%
grade 2 events	3876
	12%
grade 3 events	2165
	6%
grade 4 events	2158
	6%
grade 5 events	2389
	7%
grade 6 events	6126
	19%
grade 7 events	10277
	33%

## 2.2 Compared Parameters

Parameter	Planned	Actual	Parameter	Planned	Actual
Instrument	ACIS	ACIS	Obspar format version number	7	7
Detector	ACIS-7	ACIS-7	Obspar file type	PREDICTED	ACTUAL
Grating	NONE	NONE	Obspar update status	NONE	UPDATED
Data mode	VFAINT	VFAINT	Number of optional ACIS chips dropped	0	0
Observation mode	POINTING	POINTING	On-chip summing requested	N	N
[deg] Pointing RA	69.284984	69.31295858526971	Subarray requested	CUSTOM	CUSTOM
[deg] Pointing Dec	-47.231753	-47.25129880105922	Subarray start row	447	447
[deg] Pointing Roll	283.234870	283.4120372324174	Subarray row count	101	101
[s] Window start time (MET)	218246464.184000	218246464.184000	Alternating exposures requested	N	N
[s] Window stop time (MET)	226022404.184000	226022404.184000	[s] Primary exposure time	0.000000	0.4
[mm] SIM focus pos	-0.684267	-0.6828225247311905			
[mm] SIM defocus	0	0.001444936568705701			
[mm] SIM translation stage pos	-190.132523	-190.1425803651734			
[mm] SIM translation stage offset	0	0.01005778216563158			
[s] Observation start time (MET)	225110609.184000	225109775.351			
Observation start date	2005-02-18T10:42:25	2005-02-18T10:29:35			
[s] Observation end time (MET)	225135609.184000	225136409.9772			
Observation end date	2005-02-18T17:39:05	2005-02-18T17:53:29			
Read mode	TIMED	TIMED			

## 2.3 Aspect

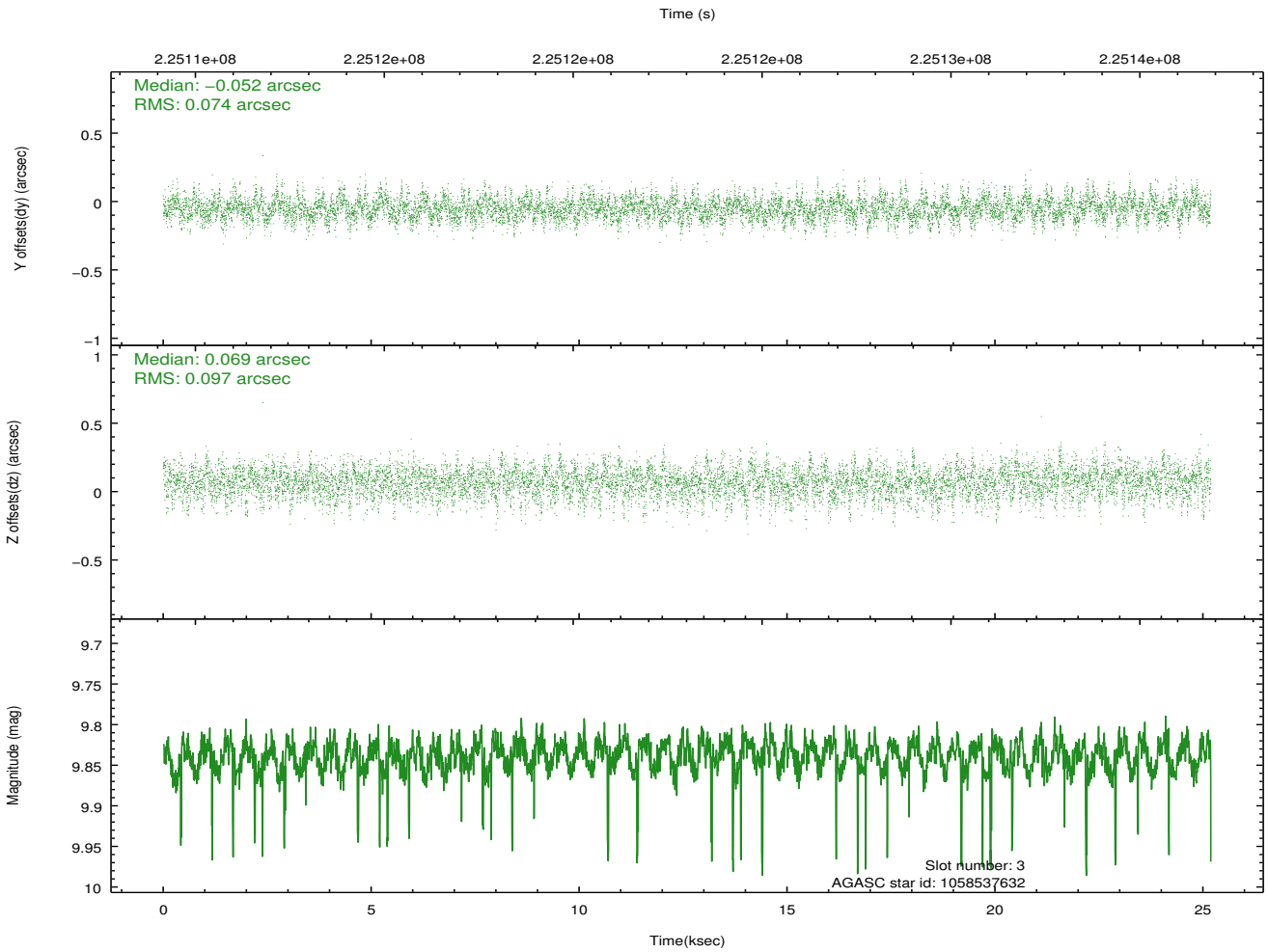
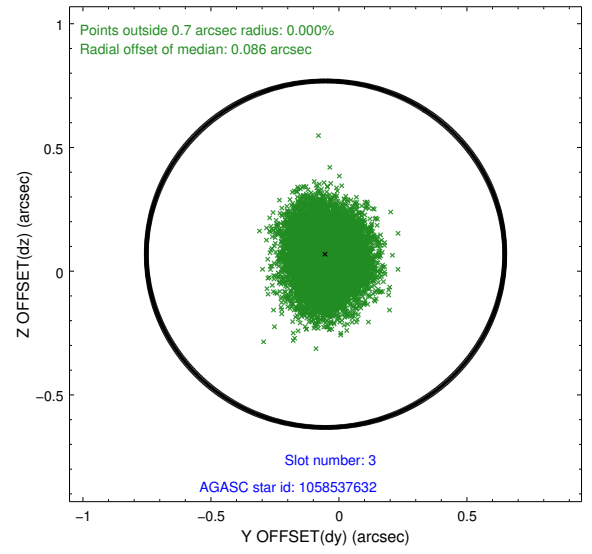
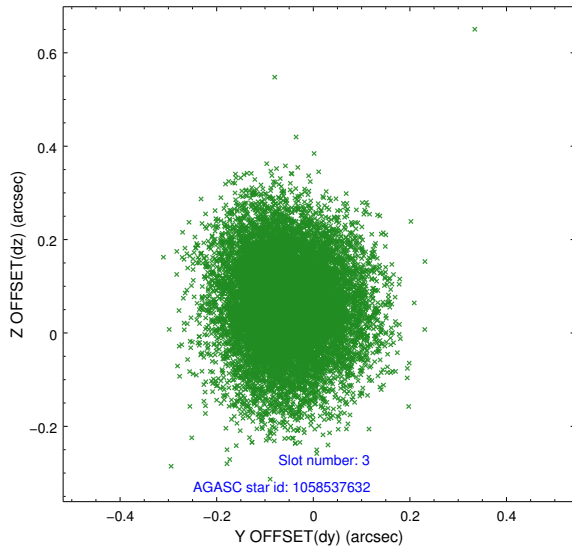


### Slot Statistics

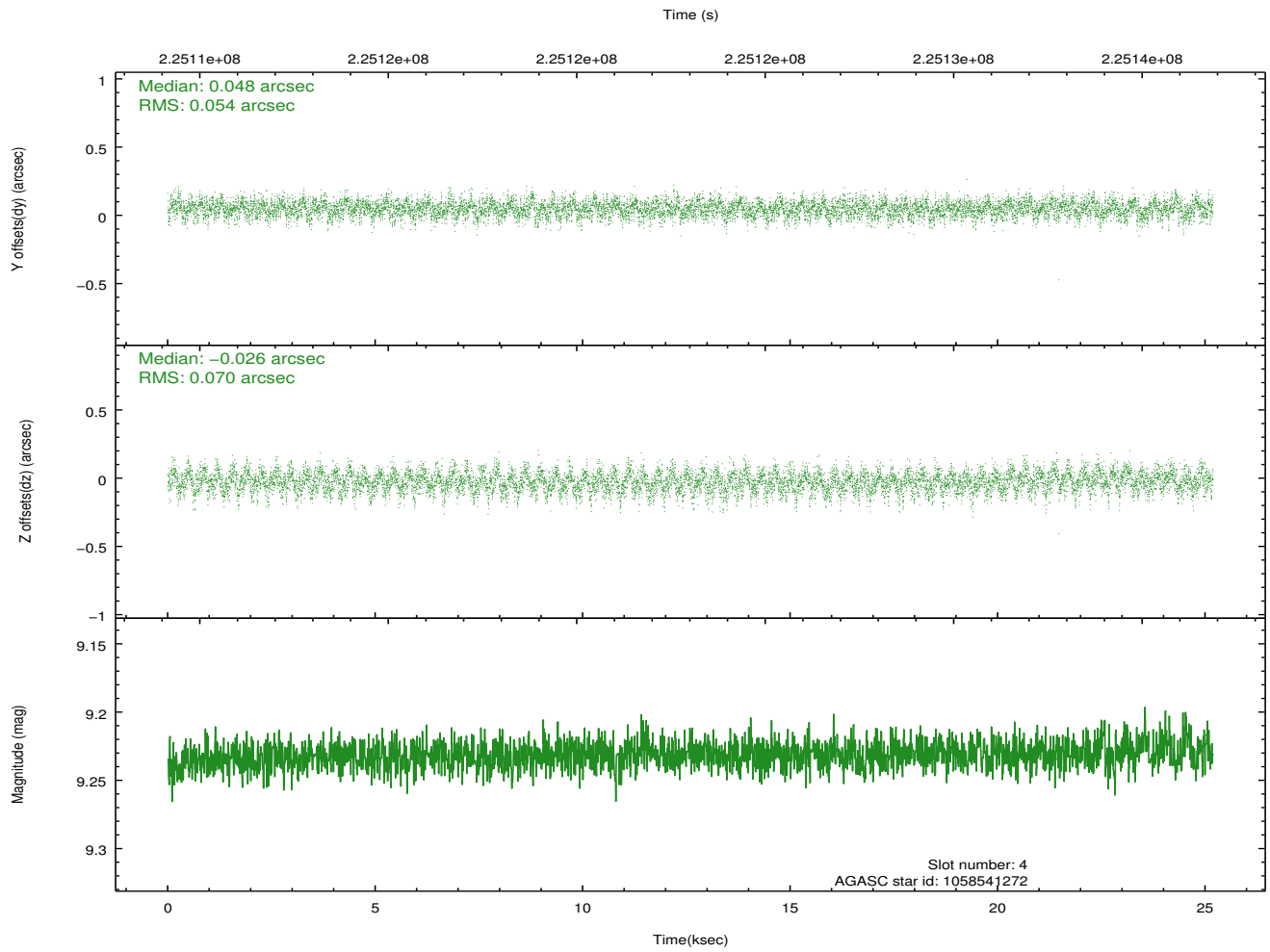
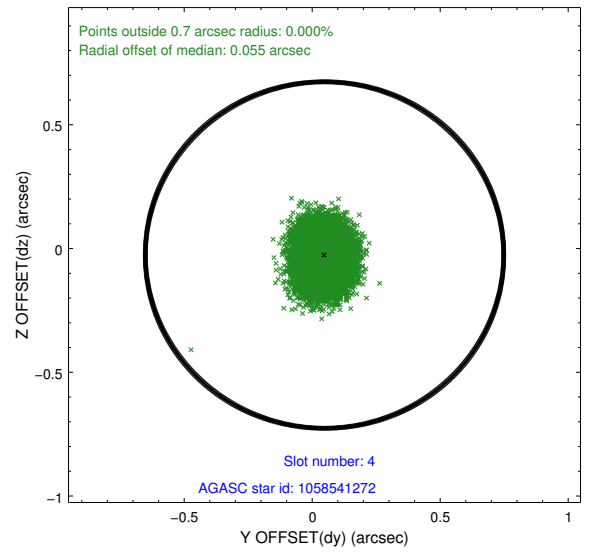
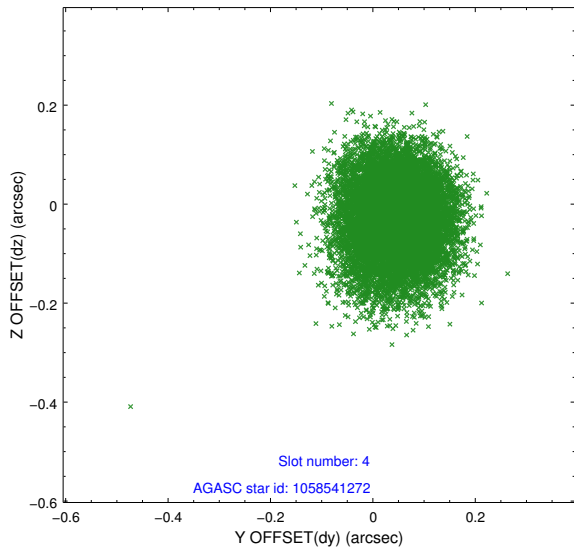
slot	status	id	mag	n_pts	med_dy	med_dz	dr1	dr2	ra	dec	mean_y	mean_z
0	FID	ACIS-S-1	7.18	6144	0.020	-0.024	0.026	0.034	0.000000	0.000000	937.37	-1726.68
1	FID	ACIS-S-5	7.23	6144	-0.078	0.007	0.024	0.035	0.000000	0.000000	-1811.63	170.83
2	FID	ACIS-S-6	7.35	6144	0.039	0.034	0.037	0.047	0.000000	0.000000	402.85	814.91
3	GUIDE	1058537632	9.84	12184	-0.052	0.069	0.130	0.214	68.291617	-47.025396	-1265.66	-2206.13
4	GUIDE	1058541272	9.23	12279	0.048	-0.026	0.095	0.153	68.392275	-46.921735	-1576.27	-1884.03
5	GUIDE	1058542336	9.61	12283	-0.058	-0.020	0.112	0.182	69.740954	-46.597293	-1961.96	1620.18
6	GUIDE	1058544032	8.99	12211	0.054	-0.005	0.087	0.136	69.576631	-47.141596	-150.98	769.68
7	GUIDE	1058931064	9.48	12235	0.004	-0.015	0.116	0.183	69.760694	-47.722390	1986.91	716.92

## 2.4 Star Slots

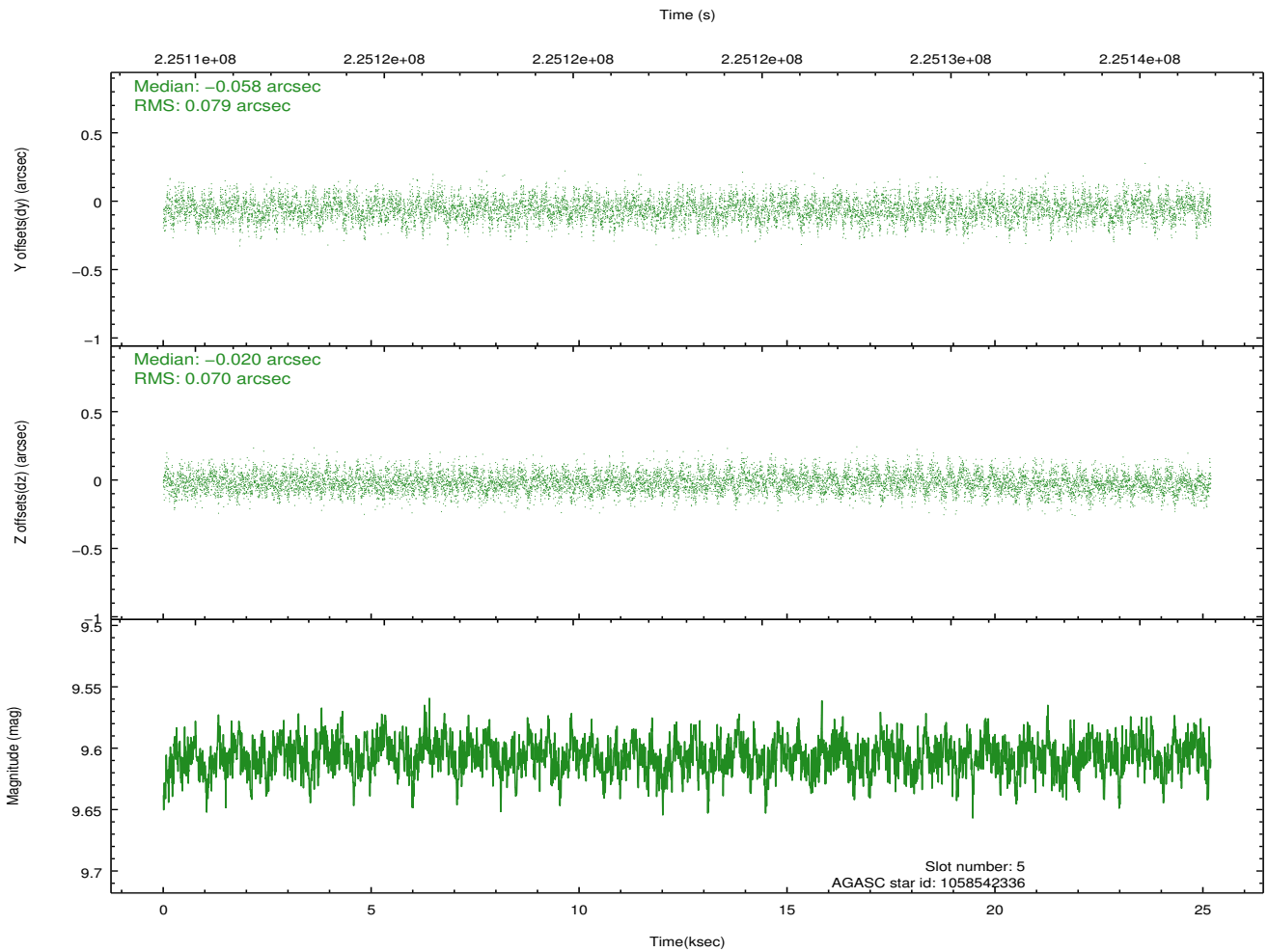
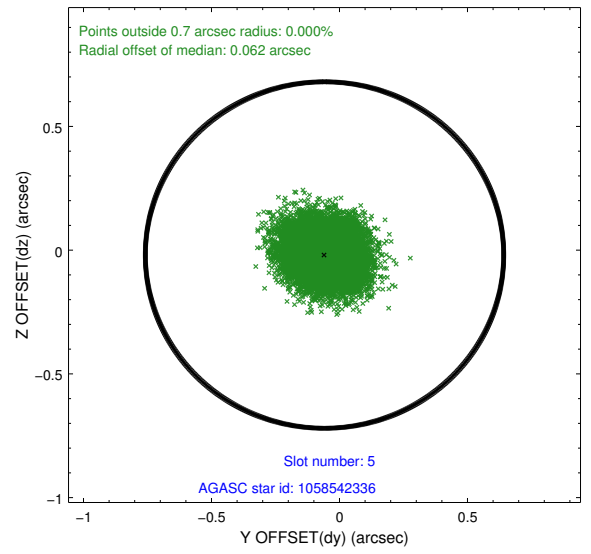
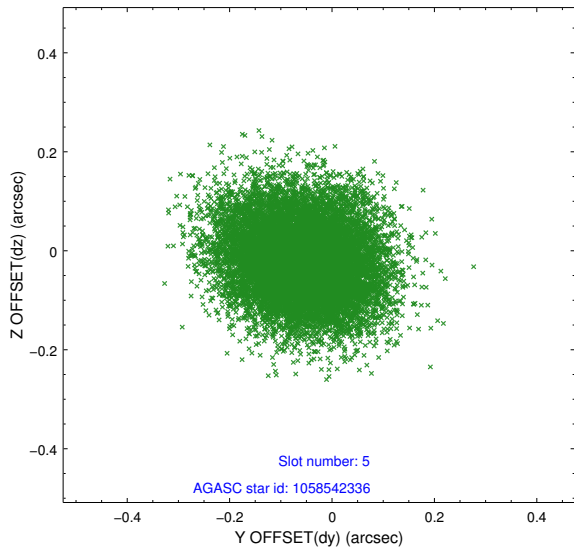
### 2.4.1 Slot 3



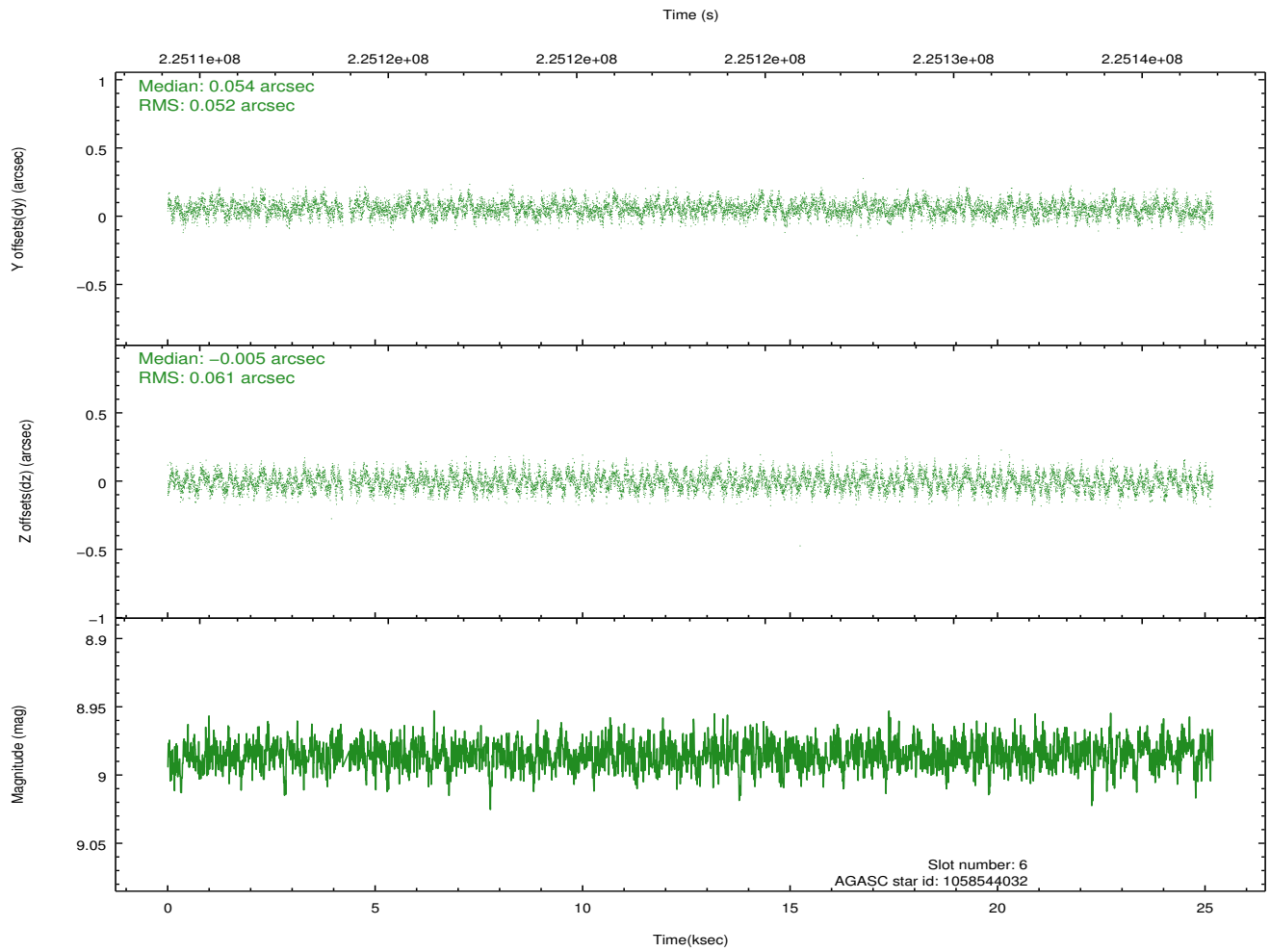
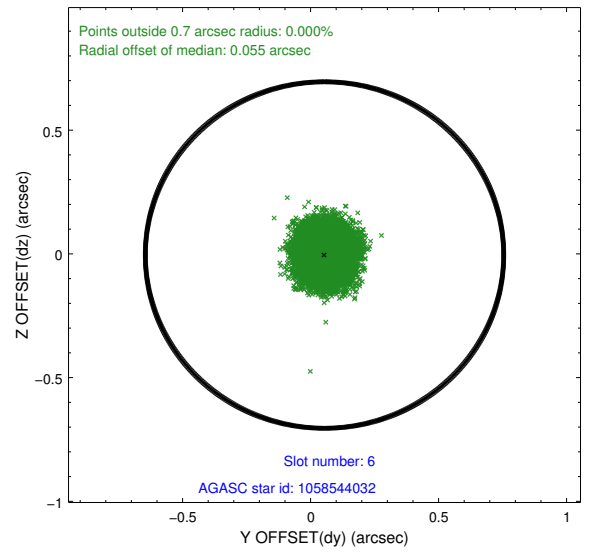
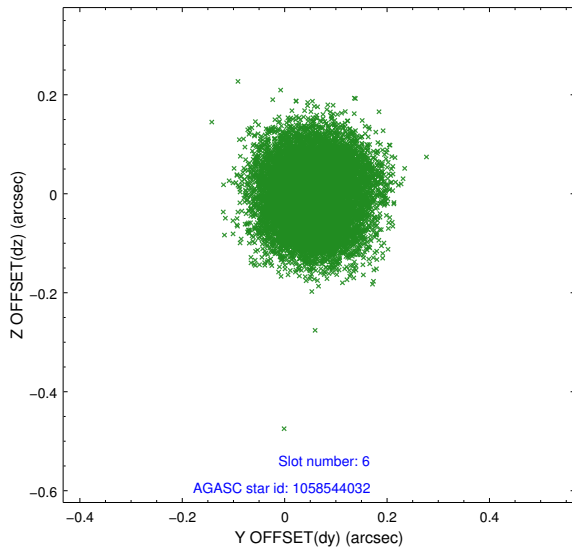
### 2.4.2 Slot 4



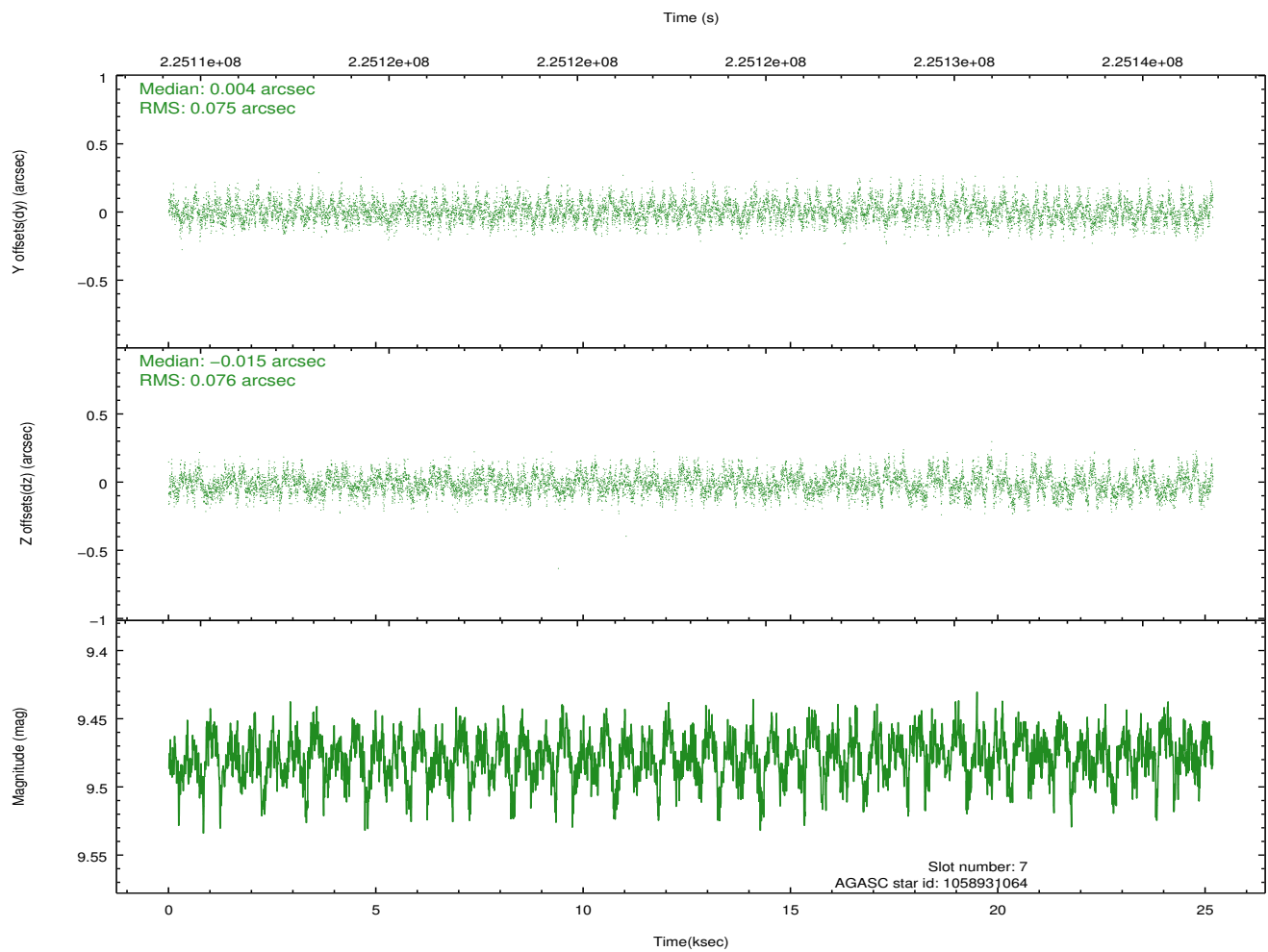
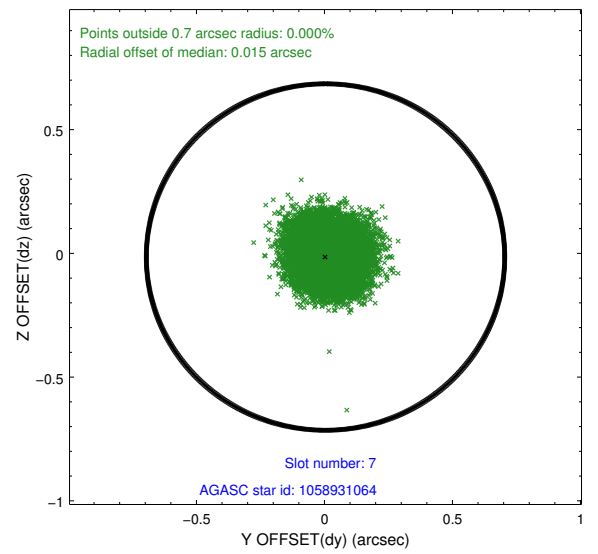
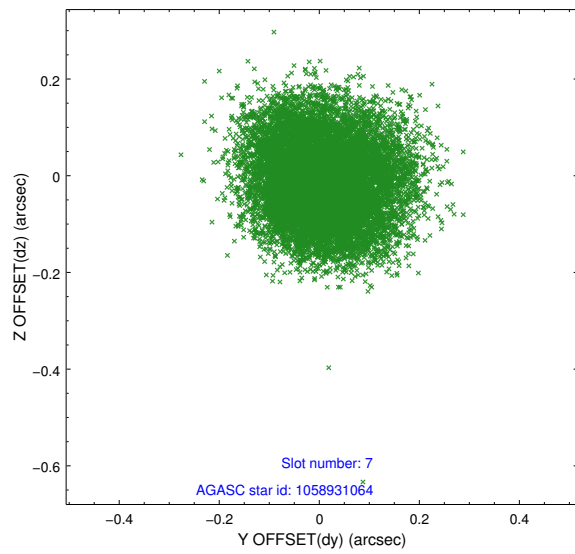
### 2.4.3 Slot 5



## 2.4.4 Slot 6

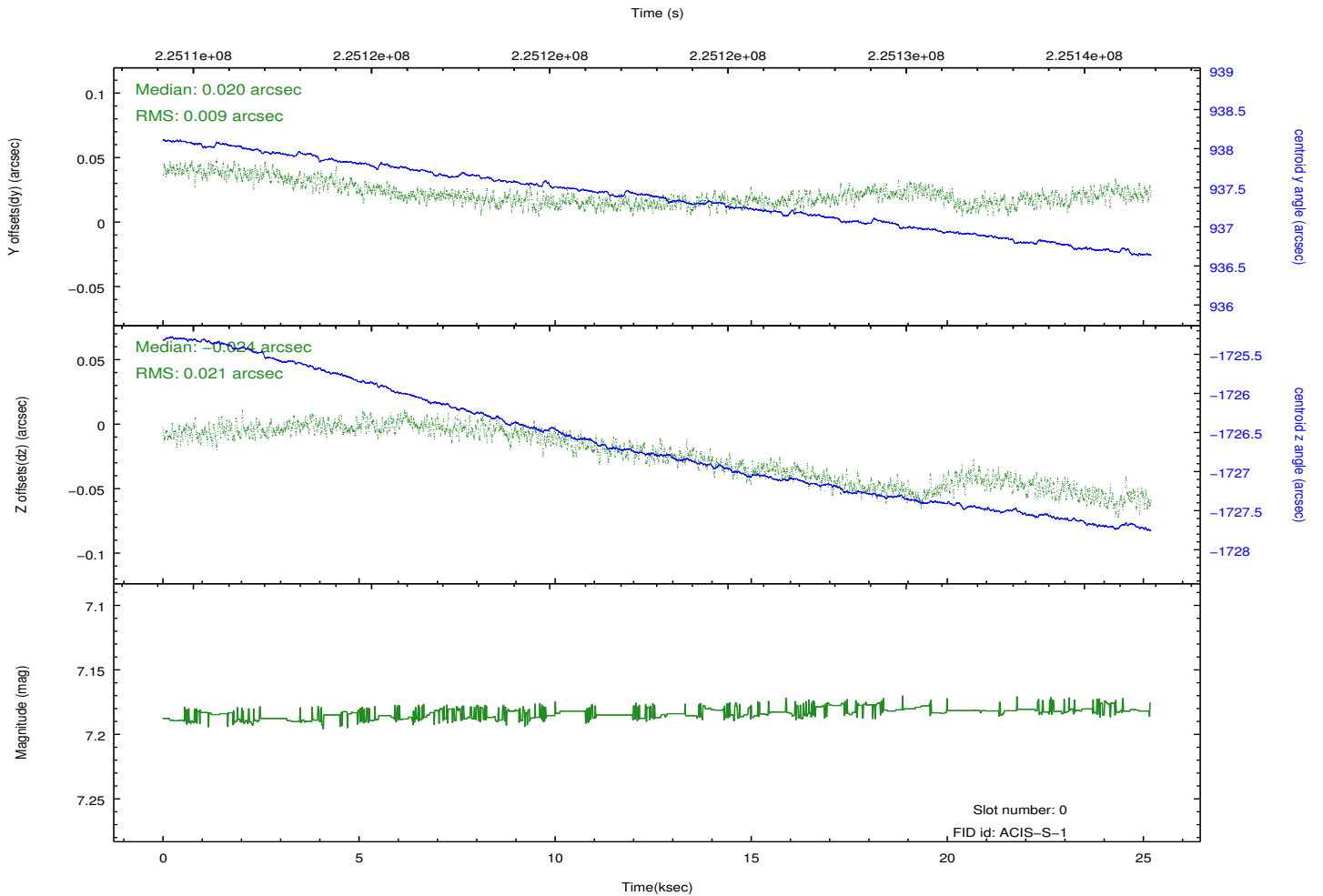
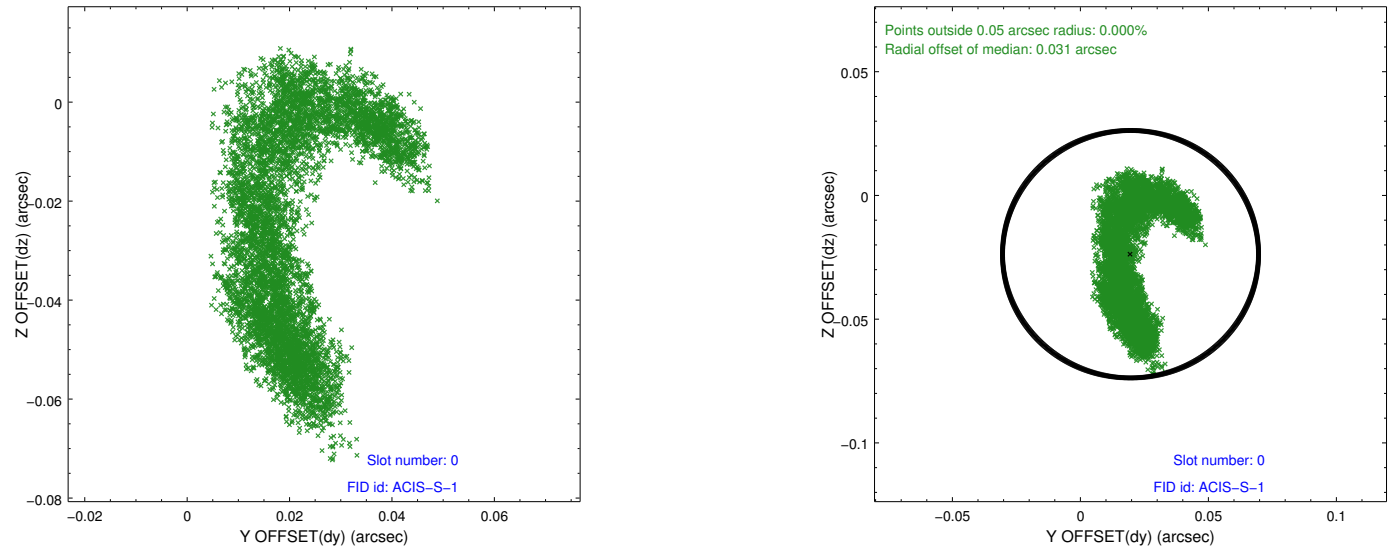


## 2.4.5 Slot 7

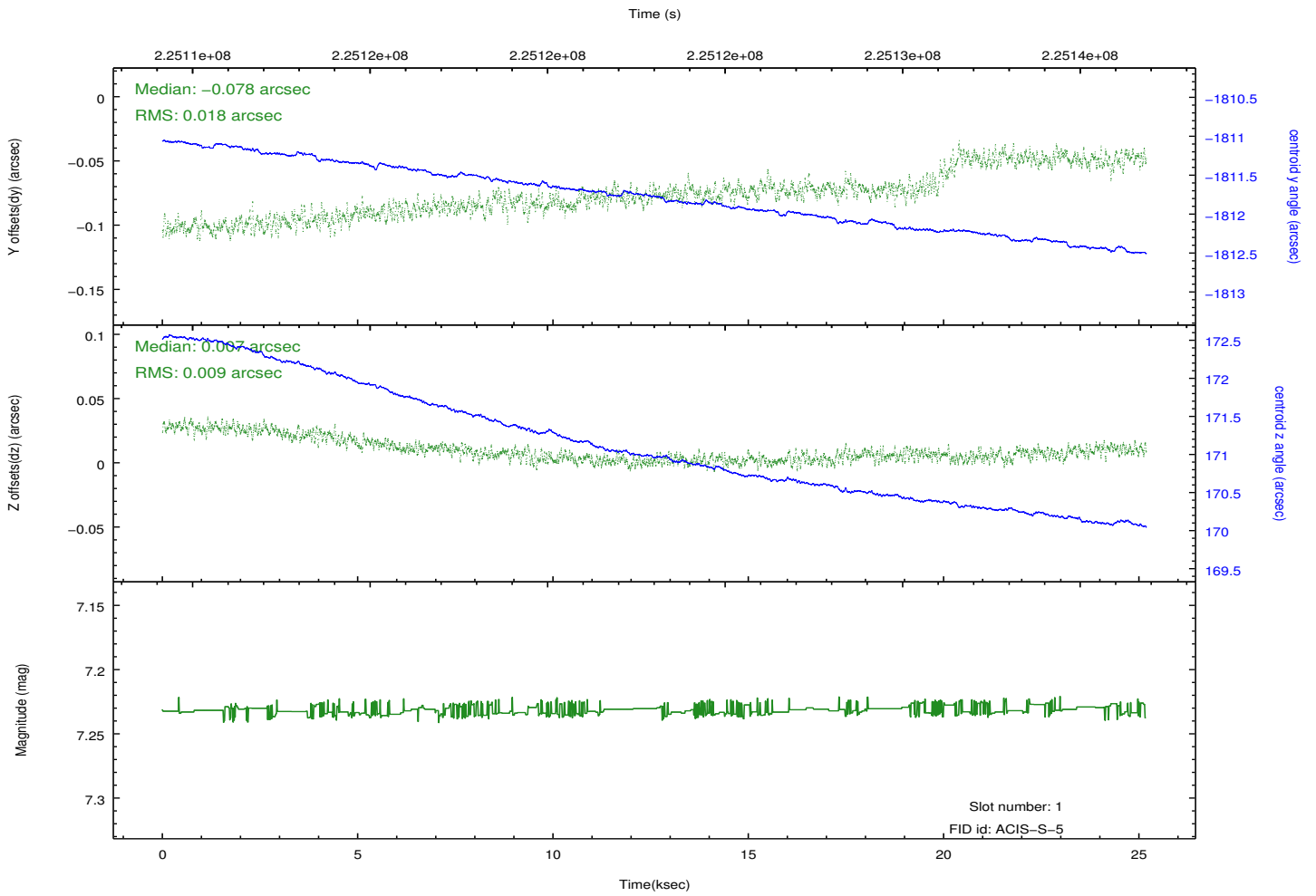
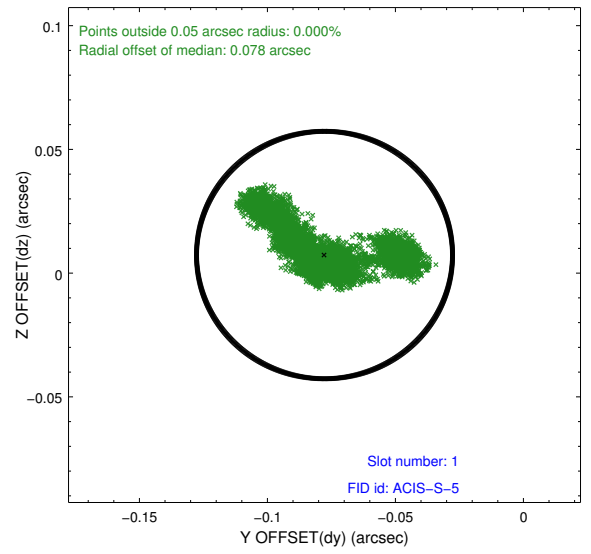
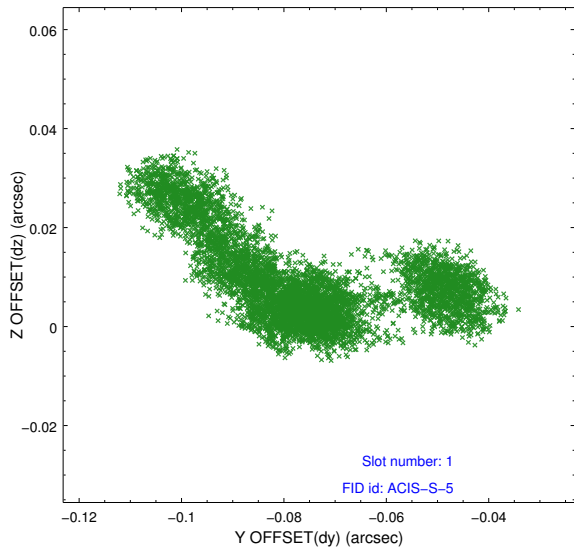


## 2.5 FID Slots

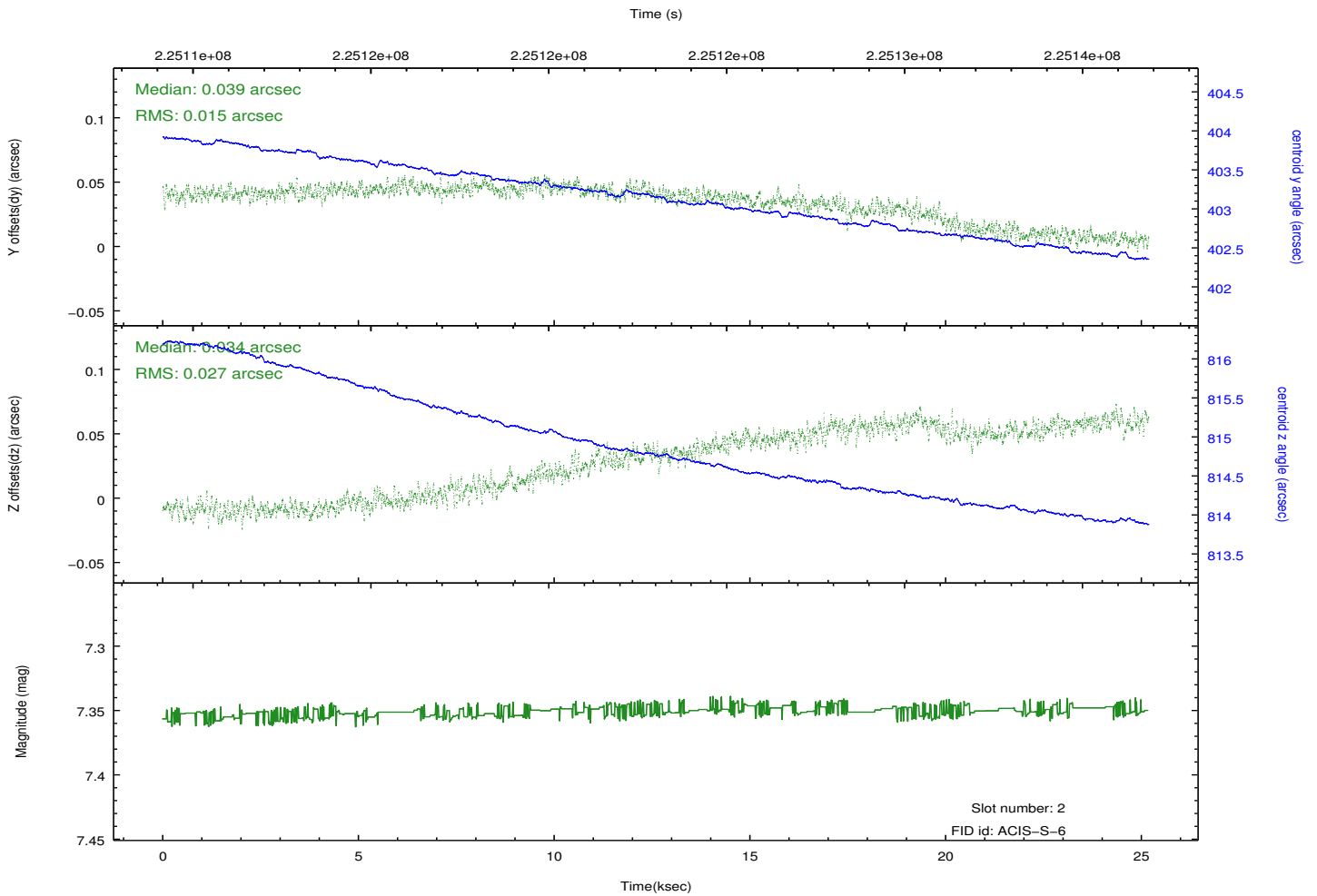
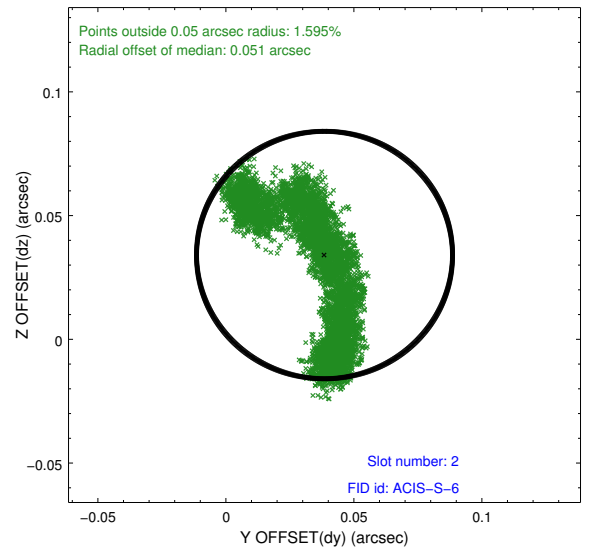
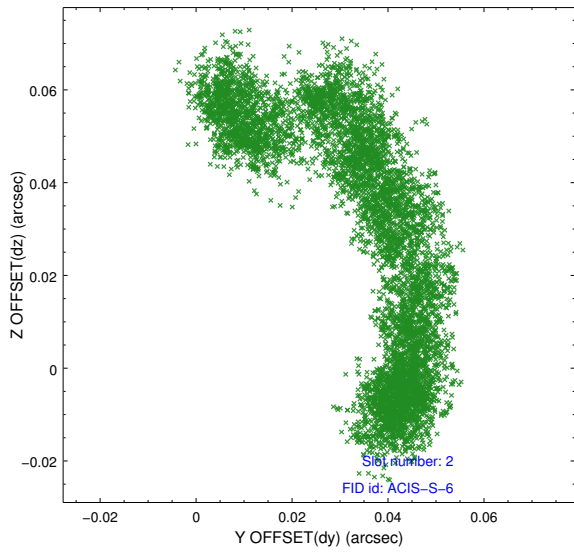
### 2.5.1 Slot 0



## 2.5.2 Slot 1



### 2.5.3 Slot 2



# A Summary

## A.1 Status

V&V Scientist	Jen Lauer
V&V Date (YYYY-MM-DD)	2013.01.30
V&V Edition	1
V&V Disposition and Status	OK
V&V Charge Time	25.1876

## A.2 Comments

Window constraint satisfied.