

V&V Reference Report

L2 ASCDS Version : 8.4.3.1

Observation 6804 - L2 Version 2
Chandra X-Ray Center

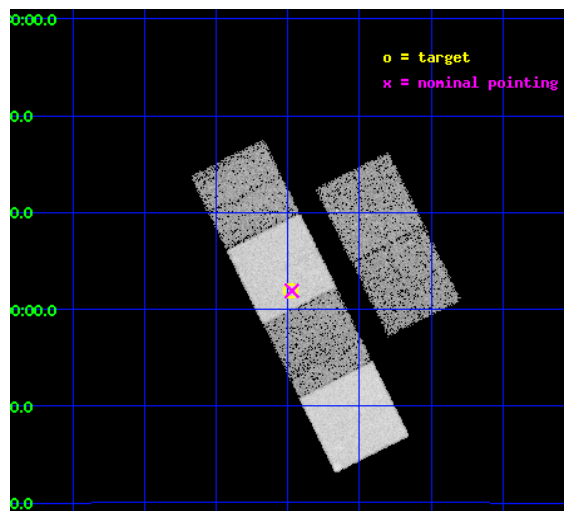
L2 Processing Date : Apr 2 2012

Contents

1	Front	2
2	OBI	3
2.1	OBI	3
2.1.1	Images	3
2.1.2	Bias	3
2.1.3	Parameters	4
2.1.4	Events	4
2.2	Compared Parameters	5
2.3	Aspect	6
2.4	Star Slots	9
2.4.1	Slot 3	9
2.4.2	Slot 4	10
2.4.3	Slot 5	11
2.4.4	Slot 6	12
2.4.5	Slot 7	13
2.5	FID Slots	14
2.5.1	Slot 0	14
2.5.2	Slot 1	15
2.5.3	Slot 2	16
A	Summary	17
A.1	Status	17
A.2	Comments	17

1 Front

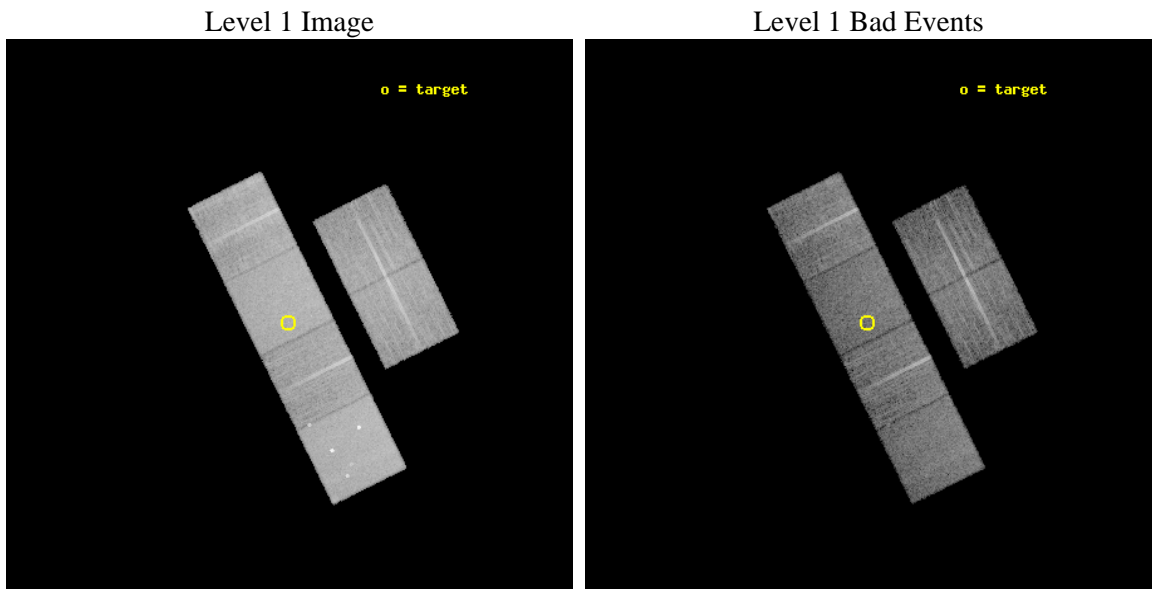
seq_num	701222	Sequence number
obs_id	6804	Observation id
title	X-ray Observations of Optically-Selected Type II Quasars	Proposal
observer	Prof. Michael Strauss	Principal investigator
object	SDSSJ1301-0058	Source name
dtycycle	0	
cycle	P	events from which exps? Prim/Second/Both
ra_targ	195.37	Observer's specified target RA [deg]
dec_targ	-0.967861	Observer's specified target Dec [deg]
ra_nom	195.36800378577	Nominal RA [deg]
dec_nom	-0.96825951975282	Nominal Dec [deg]
roll_nom	243.55064600059	Nominal Roll [deg]
revision	2	Processing version of data
ontime	10175.999962091	Sum of GTIs [s]
livetime	10047.14532332	Livetime [s]
ontime2	10175.999962091	Sum of GTIs [s]
ontime3	10175.999962091	Sum of GTIs [s]
ontime5	10175.999962091	Sum of GTIs [s]
ontime6	10175.999962091	Sum of GTIs [s]
ontime7	10175.999962091	Sum of GTIs [s]
ontime8	10175.999962091	Sum of GTIs [s]
l2events	148722	Number of level 2 events



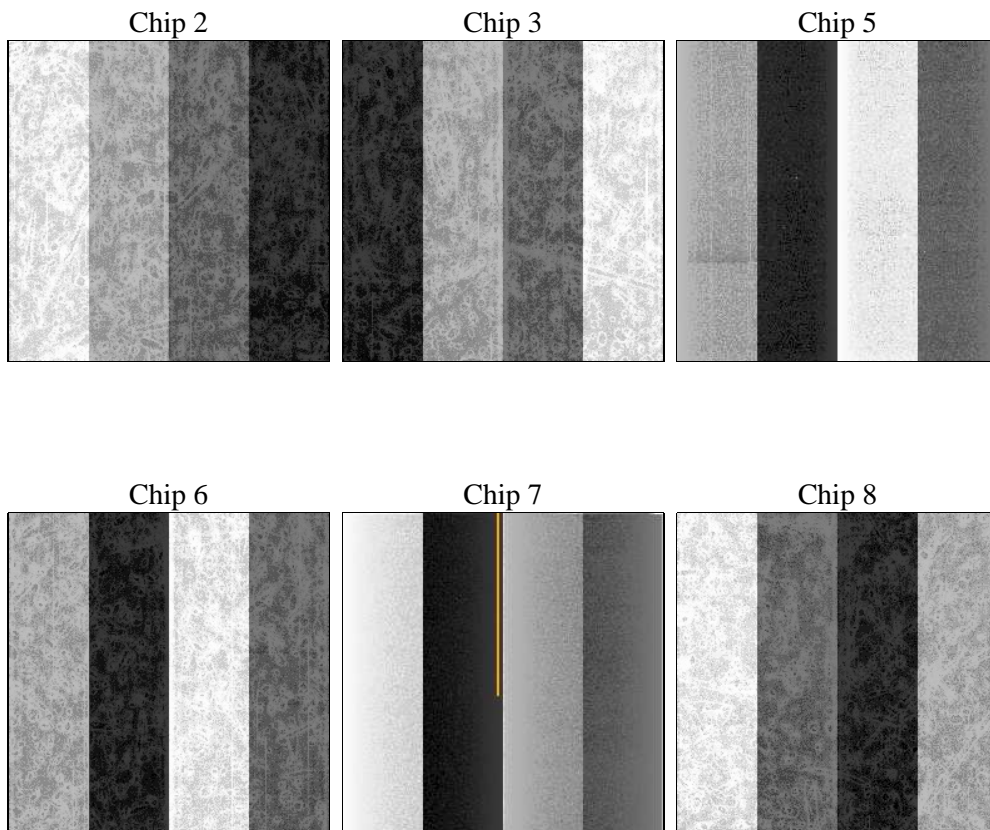
2 OBI

2.1 OBI

2.1.1 Images



2.1.2 Bias



2.1.3 Parameters

obi_num	0	Obi number	sched_exp_time	10000.000000	[s] Scheduled observation exposure time
ascdsver	8.4.3.1	Processing system revision	ontime	10175.999962091	Sum of GTIs [s]
caldbver	4.4.9	 	ontime2	10175.999962091	Sum of GTIs [s]
date	2012-04-02T03:46:22	Date and time of file creation	ontime3	10175.999962091	Sum of GTIs [s]
revision	2	Processing version of data	ontime5	10175.999962091	Sum of GTIs [s]
			ontime6	10175.999962091	Sum of GTIs [s]
			ontime7	10175.999962091	Sum of GTIs [s]
			ontime8	10175.999962091	Sum of GTIs [s]
			l1events	656438	Number of level 1 events

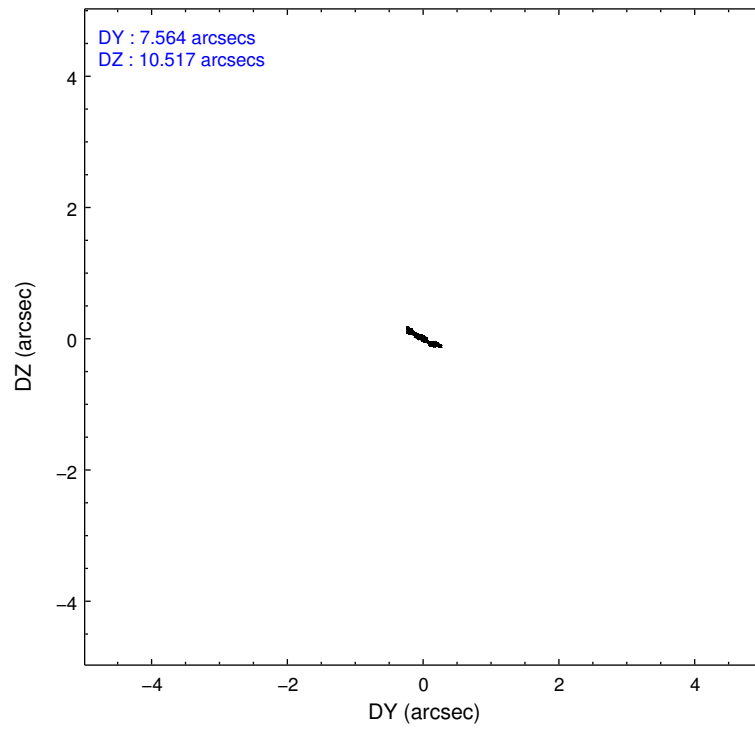
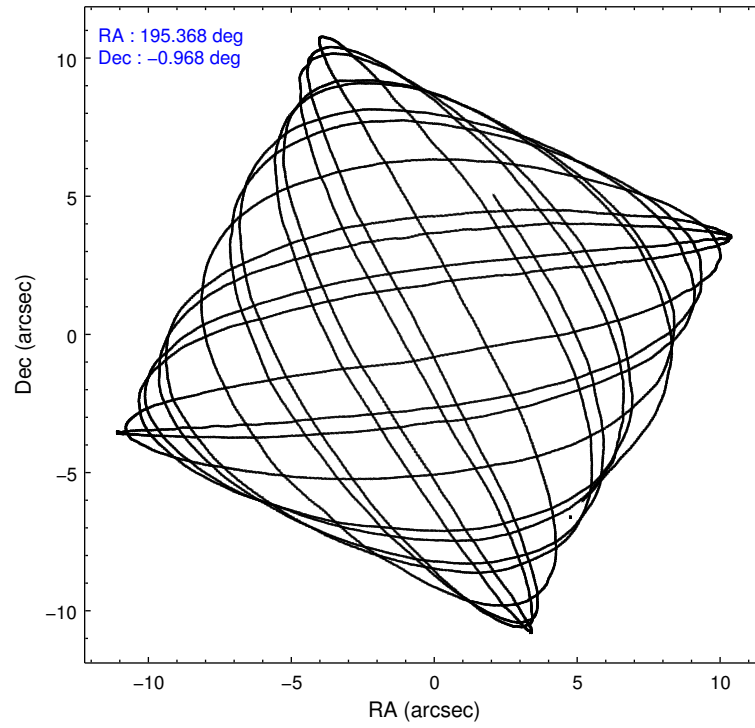
2.1.4 Events

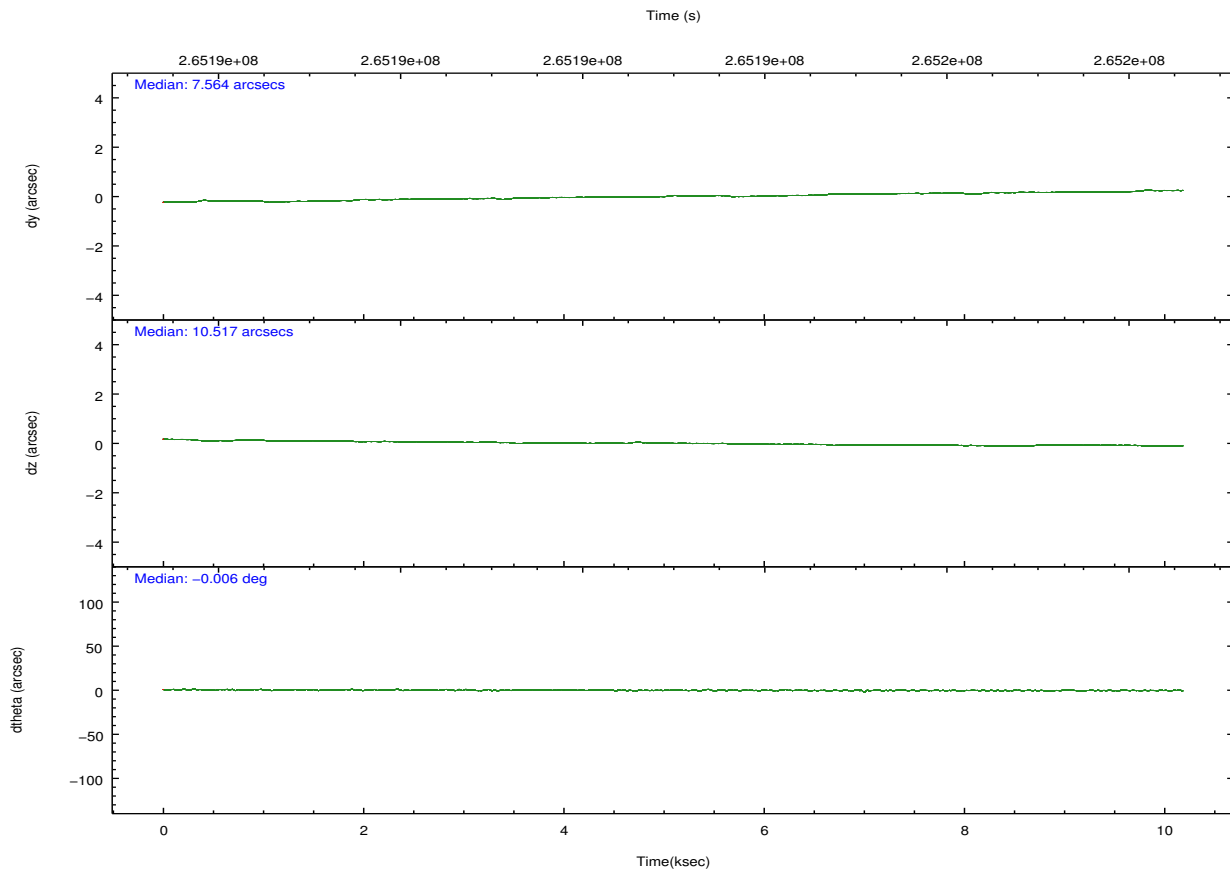
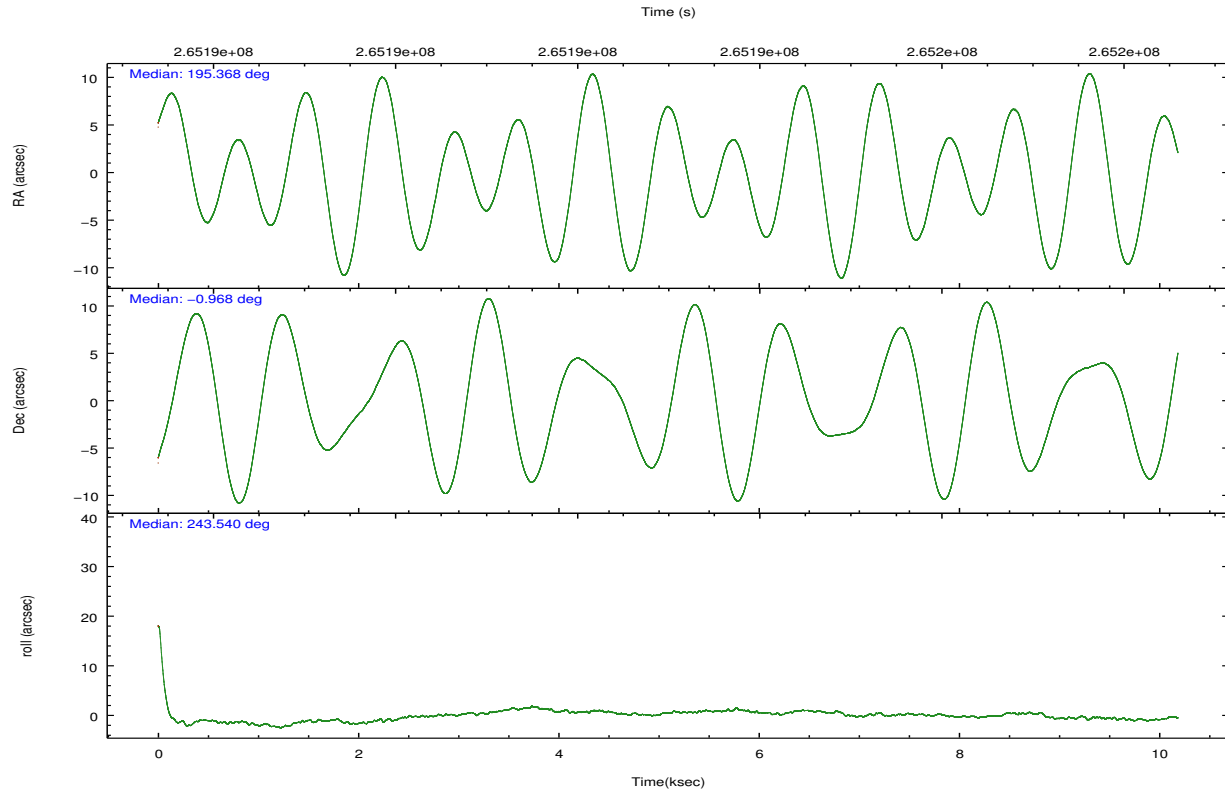
	ccd 2	ccd 3	ccd 5	ccd 6	ccd 7	ccd 8		ccd 2	ccd 3	ccd 5	ccd 6	ccd 7	ccd 8
level 1 events	94674	87472	143729	92321	124813	113429	grade 0 events	4615	4737	9240	4293	4647	7690
rejected events	84178	76666	76736	81544	73335	89066		4%	5%	6%	4%	3%	6%
rejected %	88%	87%	53%	88%	58%	78%	grade 1 events	65	66	301	43	149	86
								0%	0%	0%	0%	0%	0%
							grade 2 events	2229	2112	19374	2335	10416	5548
								2%	2%	13%	2%	8%	4%
							grade 3 events	917	1074	2340	1016	4427	2582
								0%	1%	1%	1%	3%	2%
							grade 4 events	969	1062	2294	994	4427	2311
								1%	1%	1%	1%	3%	2%
							grade 5 events	3562	4000	9962	4333	11957	5537
								3%	4%	6%	4%	9%	4%
							grade 6 events	1787	1853	33918	2173	27693	6287
								1%	2%	23%	2%	22%	5%
							grade 7 events	80530	72568	66300	77134	61097	83388
								85%	82%	46%	83%	48%	73%

2.2 Compared Parameters

Parameter	Planned	Actual	Parameter	Planned	Actual
Instrument	ACIS	ACIS	Obspar format version number	7	7
Detector	ACIS-235678	ACIS-235678	Obspar file type	PREDICTED	ACTUAL
Grating	NONE	NONE	Obspar update status	NONE	UPDATED
Data mode	FAINT	FAINT	Number of optional ACIS chips dropped	0	0
Observation mode	POINTING	POINTING	On-chip summing requested	N	N
[deg] Pointing RA	195.365891	195.3680037857736	Subarray requested	NONE	NONE
[deg] Pointing Dec	-0.941071	-0.968259519752823	Alternating exposures requested	N	N
[deg] Pointing Roll	243.393963	243.550646000593	[s] Primary exposure time	0.000000	3.2
[mm] SIM focus pos	-0.684267	-0.6828225247311905			
[mm] SIM defocus	0	0.001444936568705701			
[mm] SIM translation stage pos	-190.132523	-190.1425803651734			
[mm] SIM translation stage offset	0	0.01005778216563158			
[s] Observation start time (MET)	265188085.184000	265187000.95788			
Observation start date	2006-05-28T07:20:20	2006-05-28T07:03:20			
[s] Observation end time (MET)	265198085.184000	265199013.95844			
Observation end date	2006-05-28T10:07:00	2006-05-28T10:23:33			
Read mode	TIMED	TIMED			

2.3 Aspect



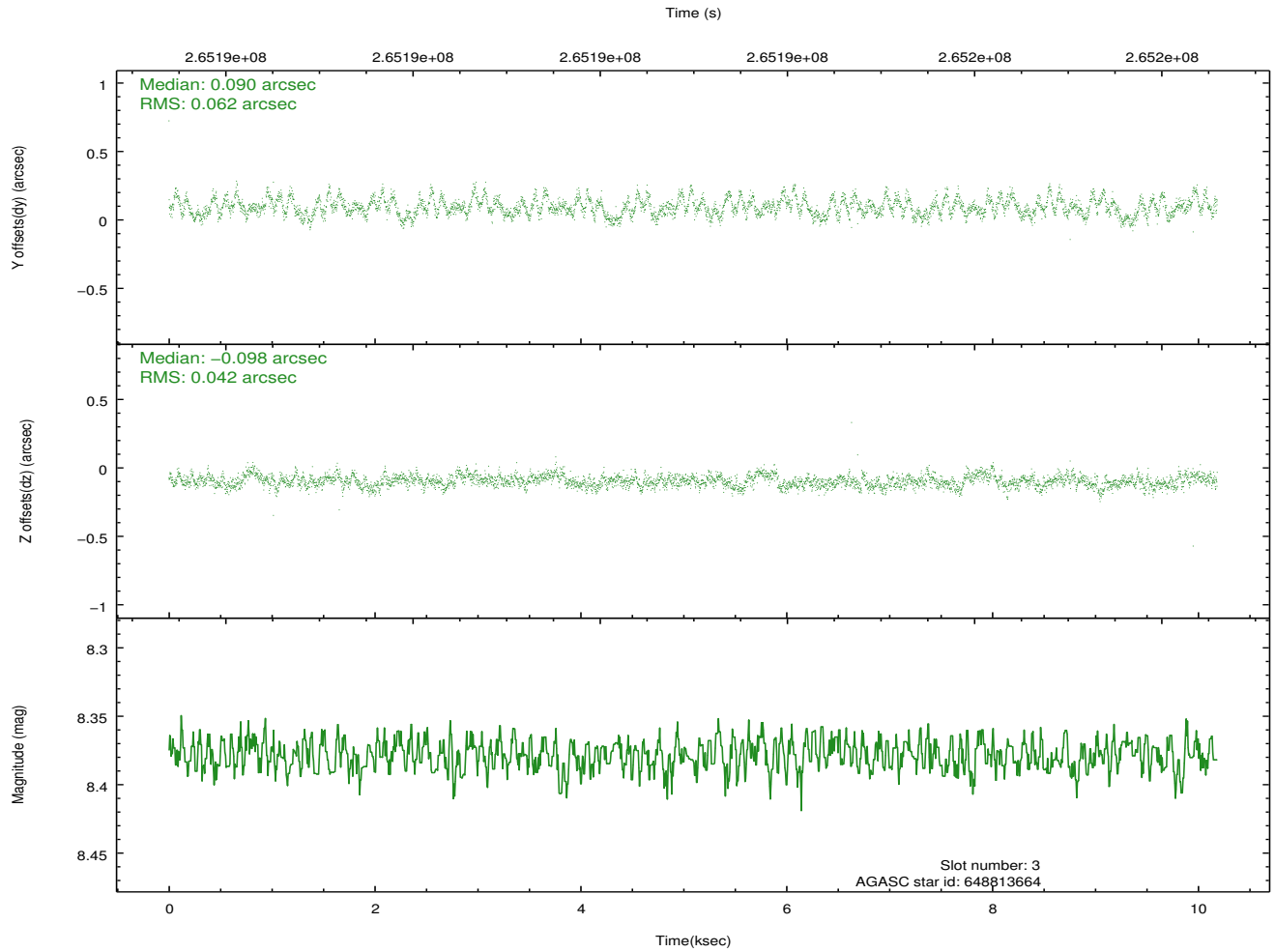
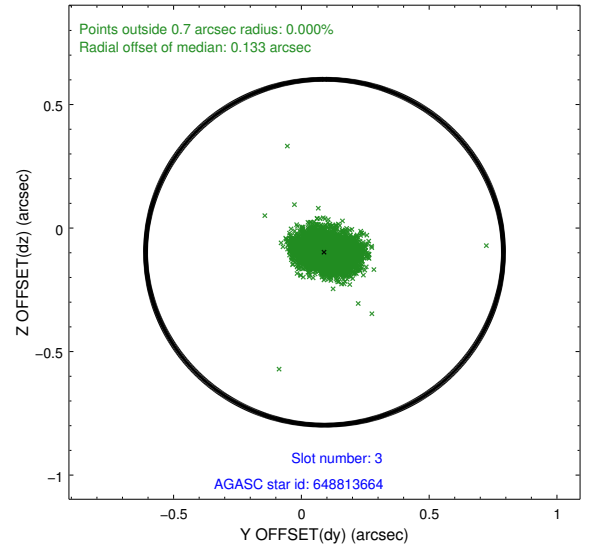
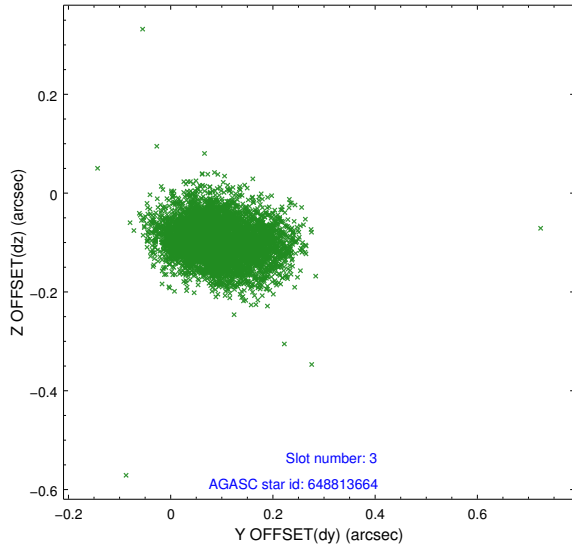


Slot Statistics

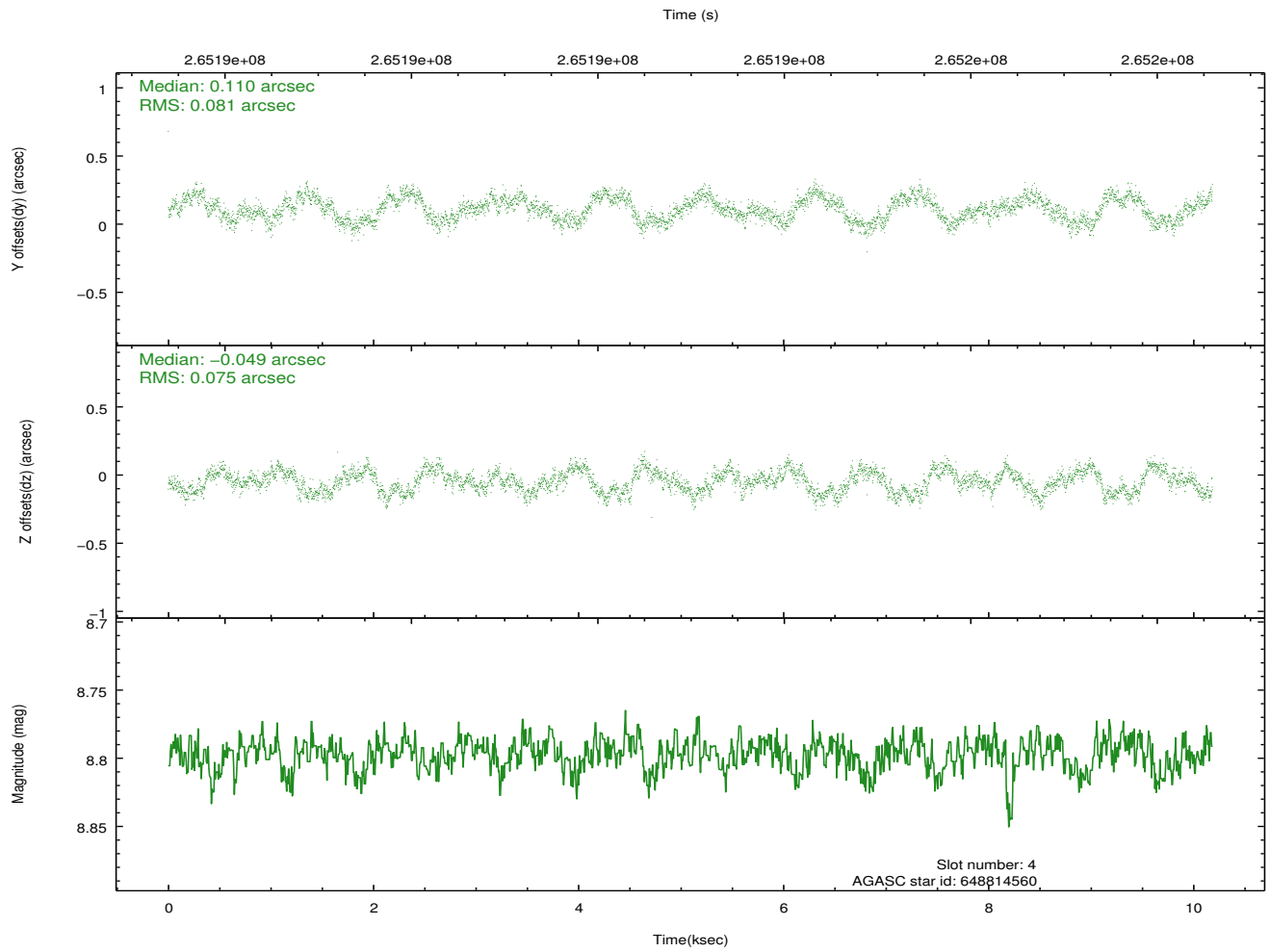
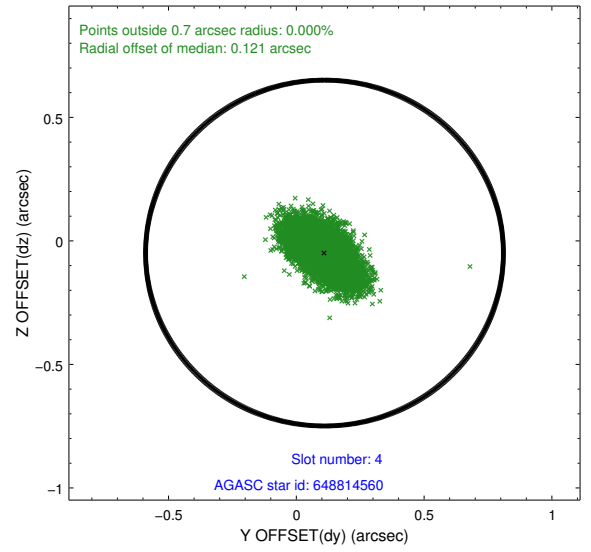
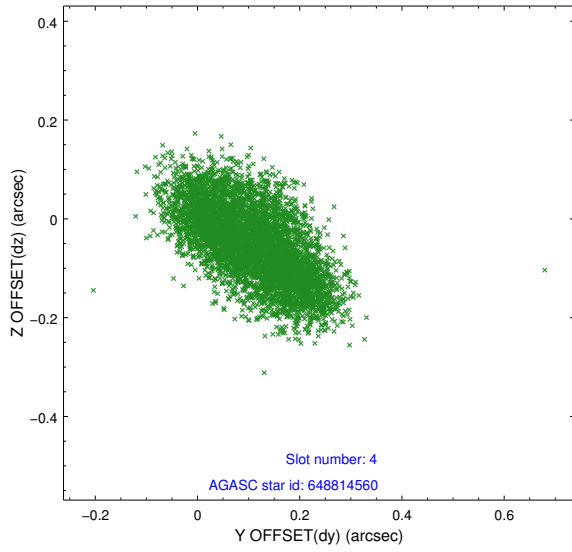
slot	status	id	mag	n_pts	med_dy	med_dz	dr1	dr2	ra	dec	mean_y	mean_z
0	FID	ACIS-S-2	7.10	2485	-0.047	-0.019	0.007	0.012	0.000000	0.000000	-760.33	-1731.77
1	FID	ACIS-S-4	7.21	2485	0.110	0.027	0.008	0.013	0.000000	0.000000	2152.81	176.30
2	FID	ACIS-S-5	7.23	2484	-0.095	-0.000	0.009	0.016	0.000000	0.000000	-1812.61	170.43
3	GUIDE	648813664	8.38	4967	0.090	-0.098	0.079	0.129	194.615044	-1.051809	1567.89	-2237.82
4	GUIDE	648814560	8.80	4965	0.110	-0.049	0.121	0.187	194.841018	-1.130344	1456.40	-1384.26
5	GUIDE	648815000	8.79	4967	-0.091	-0.033	0.098	0.149	194.731828	-0.843796	710.28	-2197.81
6	GUIDE	649726128	6.87	4968	-0.119	0.121	0.073	0.111	196.160545	-0.728306	-1965.80	2214.08
7	GUIDE	649732968	9.34	4966	0.012	0.057	0.098	0.156	195.738103	-1.507213	1221.98	2111.13

2.4 Star Slots

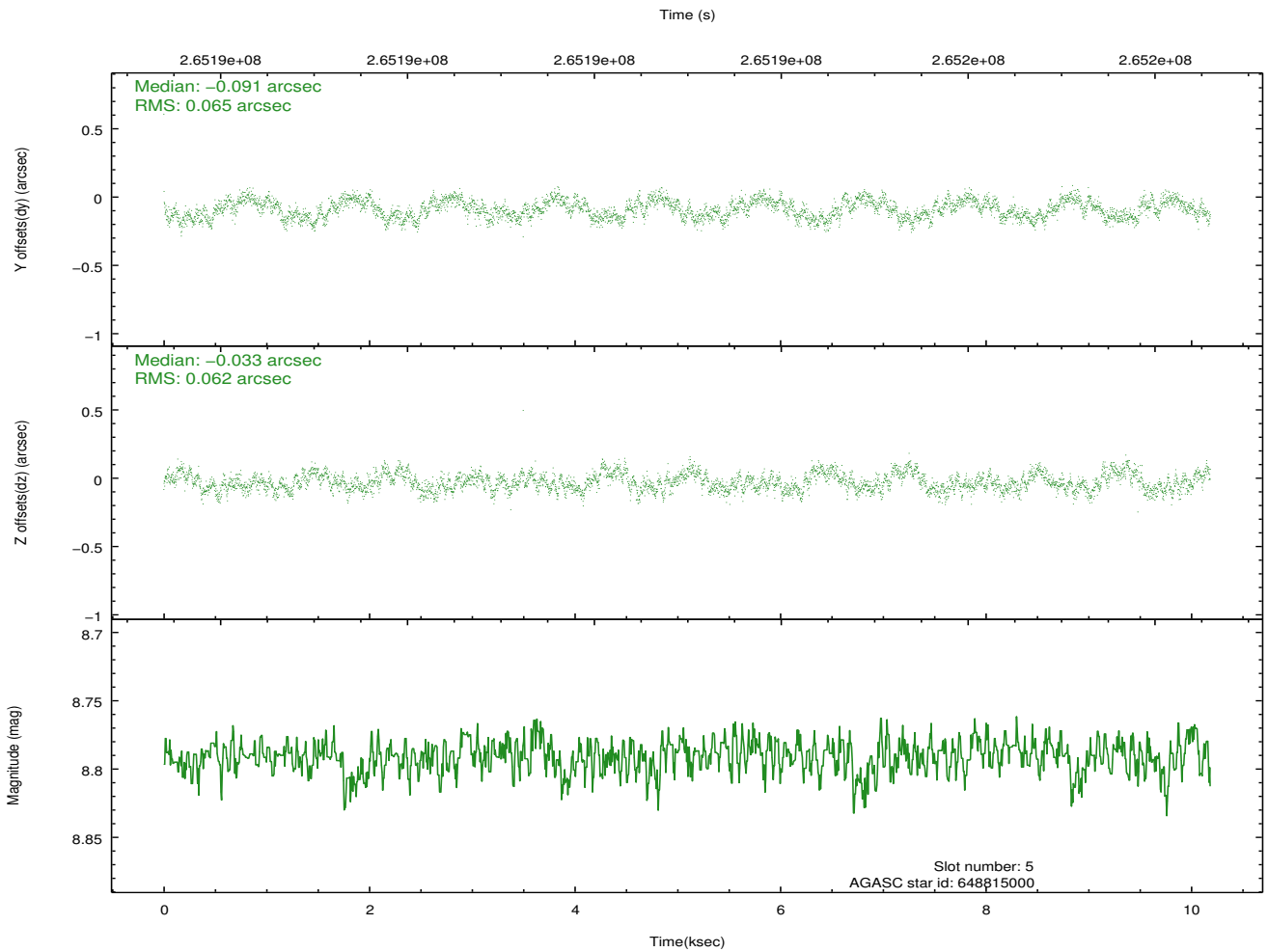
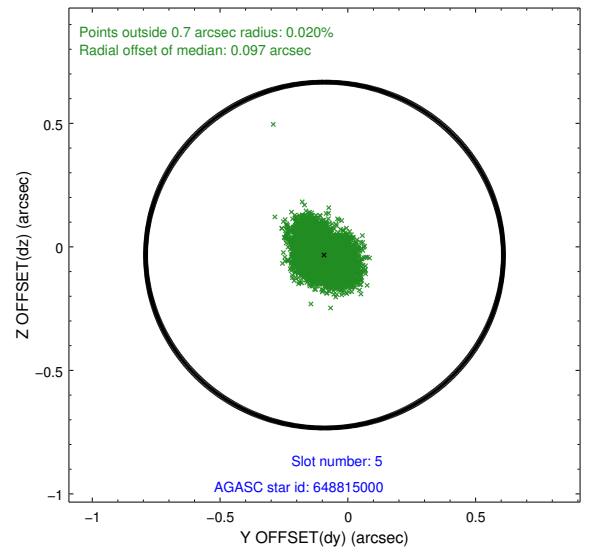
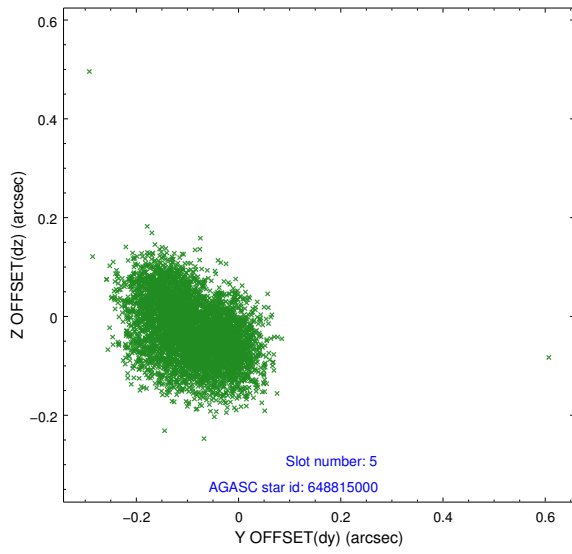
2.4.1 Slot 3



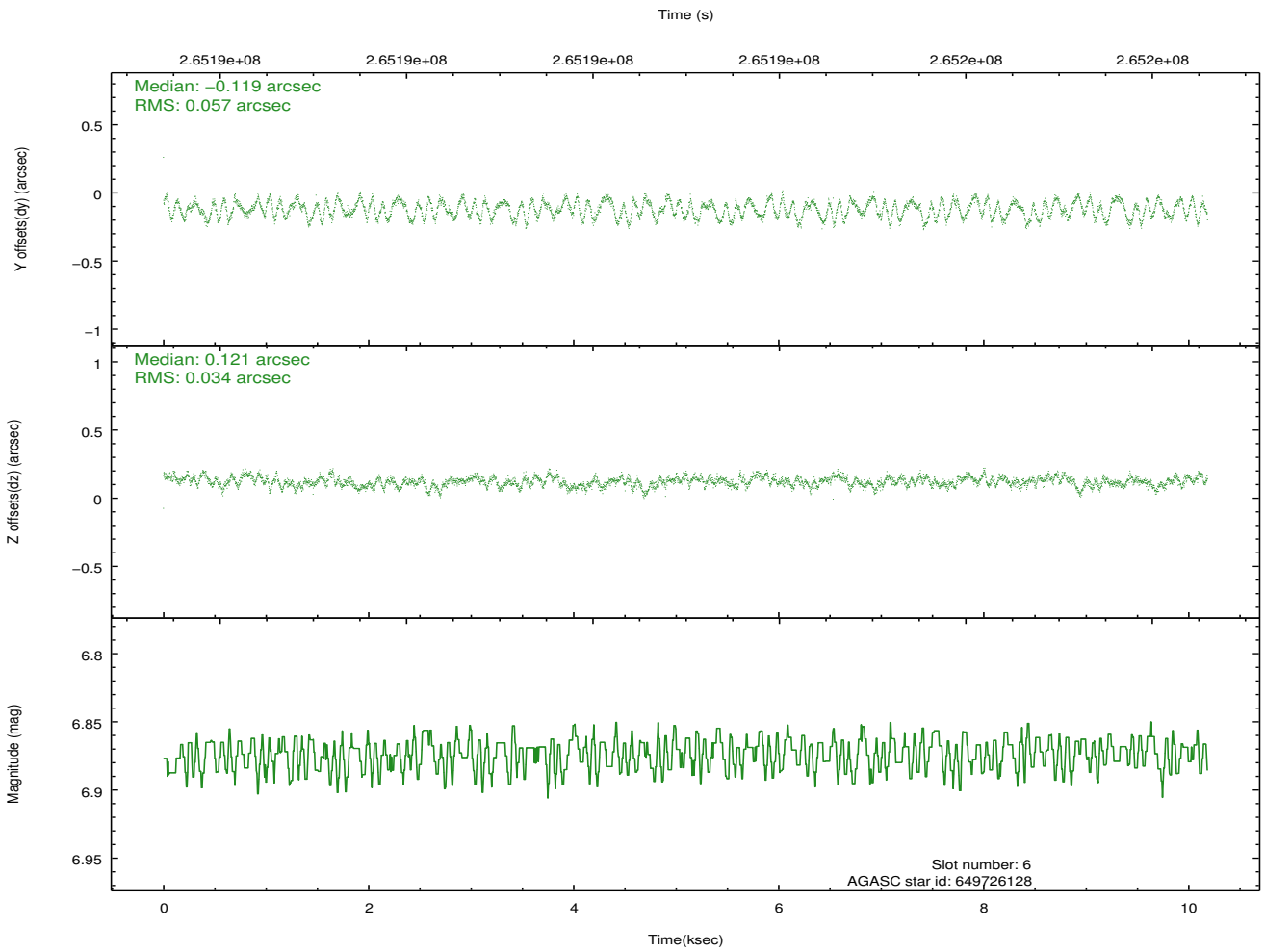
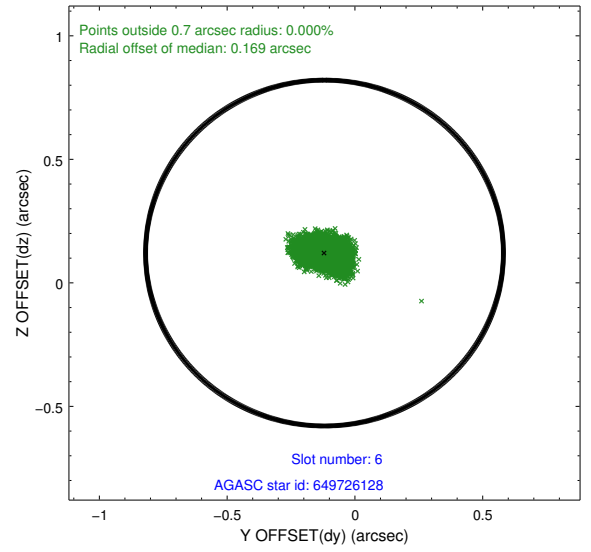
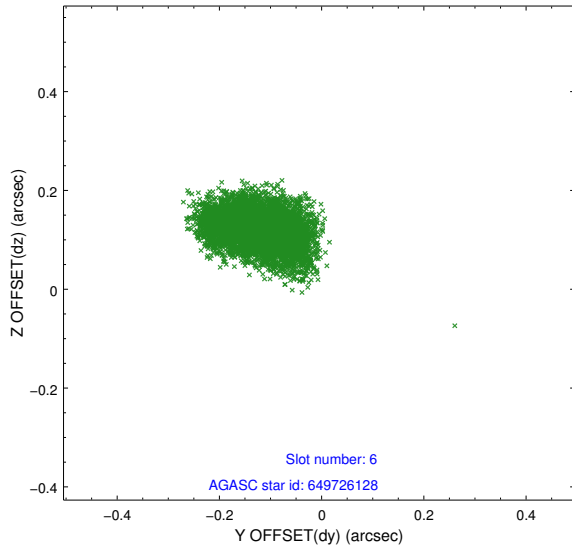
2.4.2 Slot 4



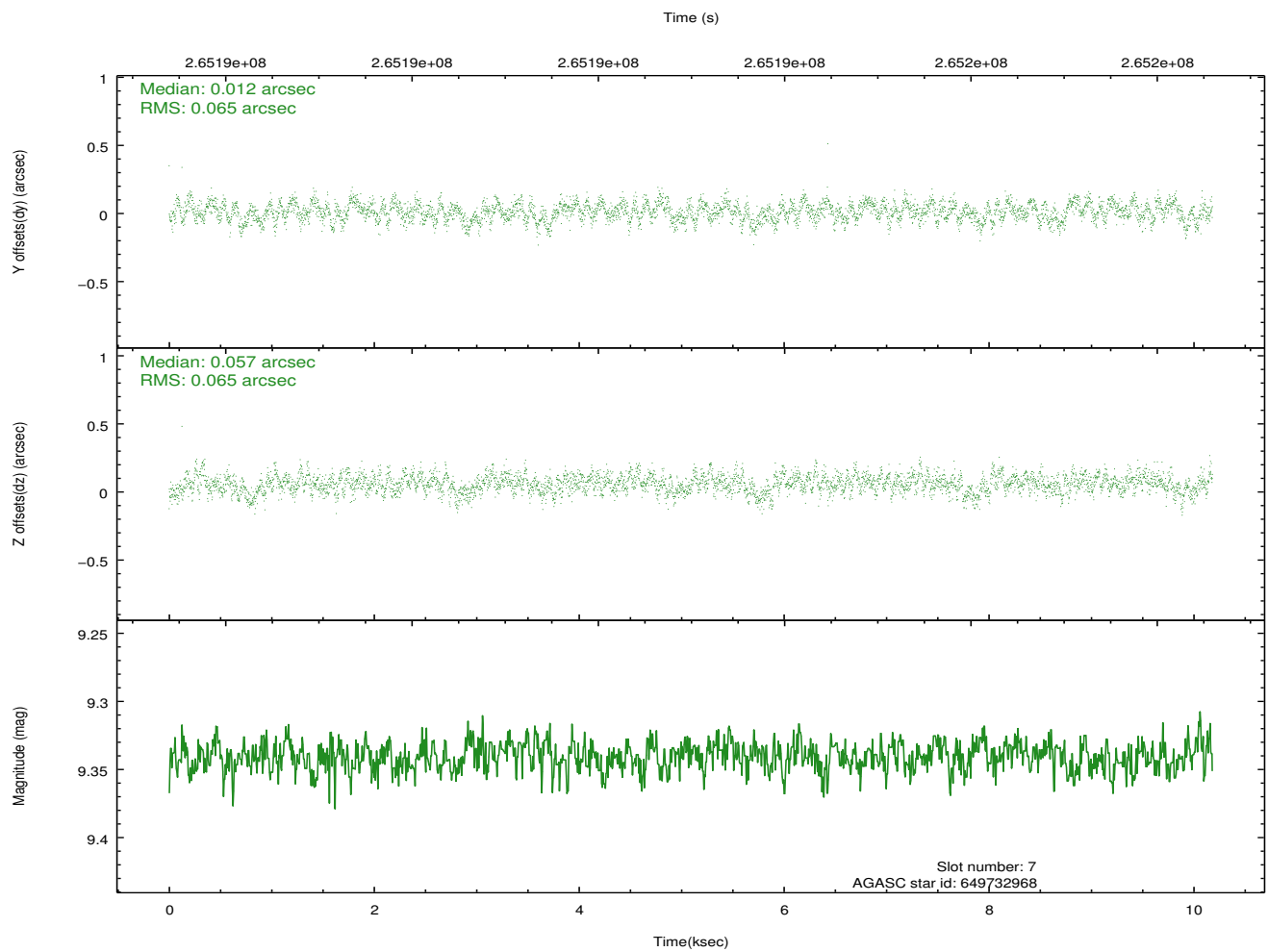
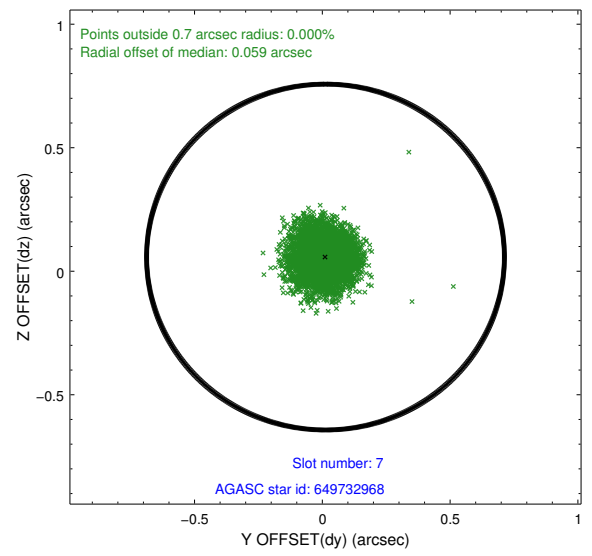
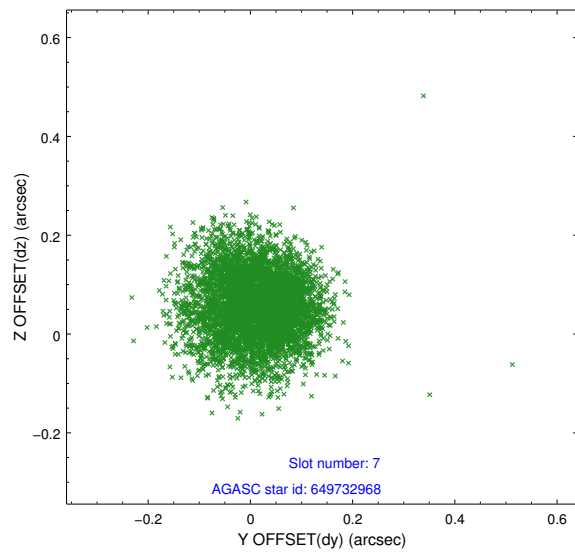
2.4.3 Slot 5



2.4.4 Slot 6

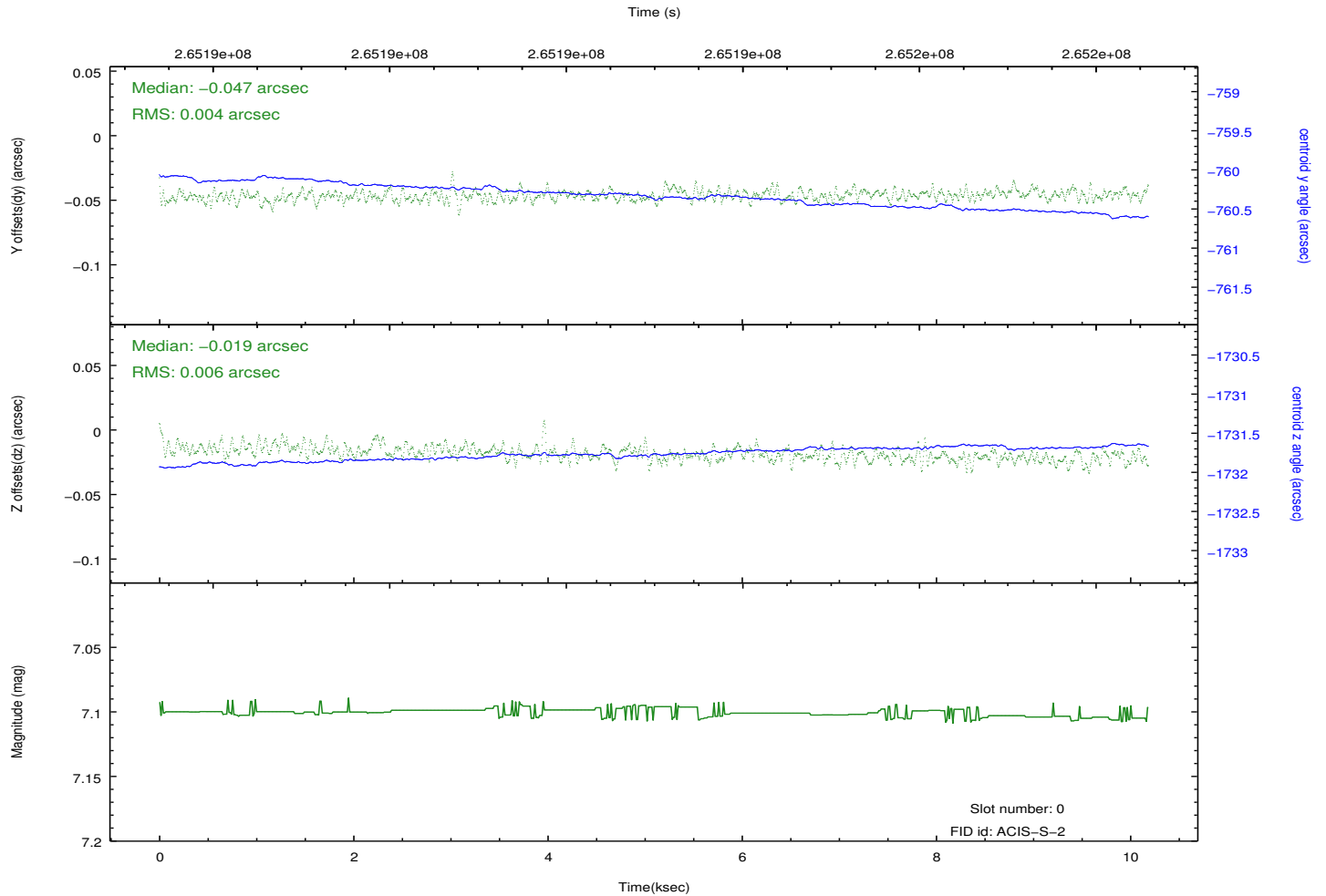
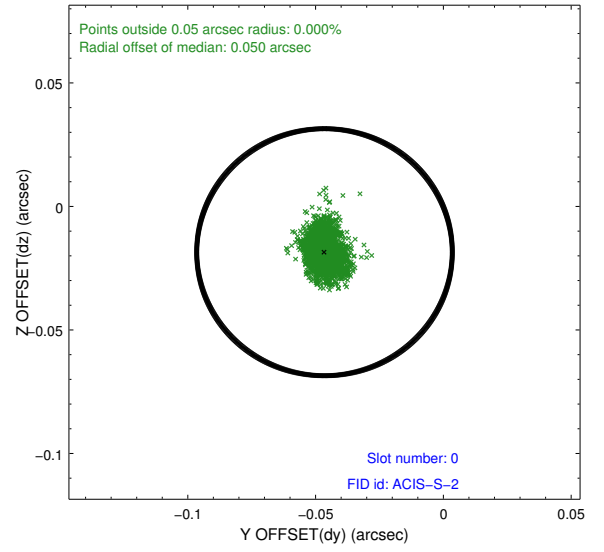
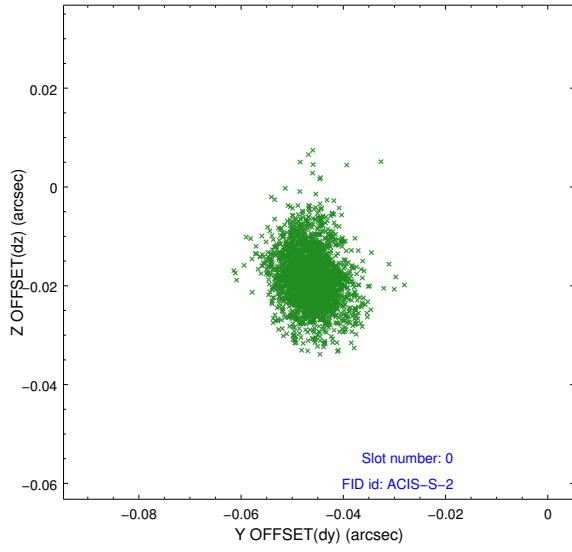


2.4.5 Slot 7

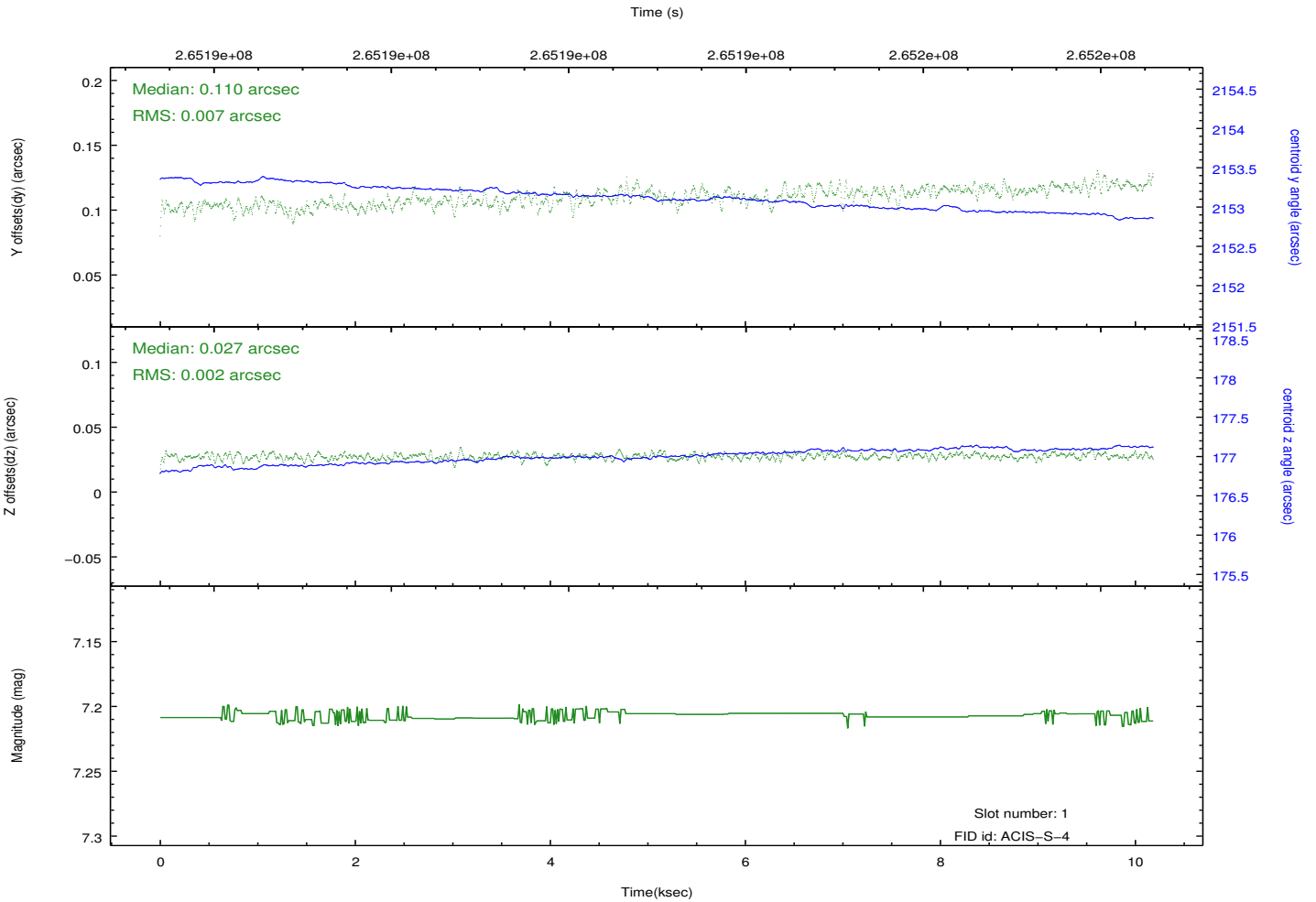
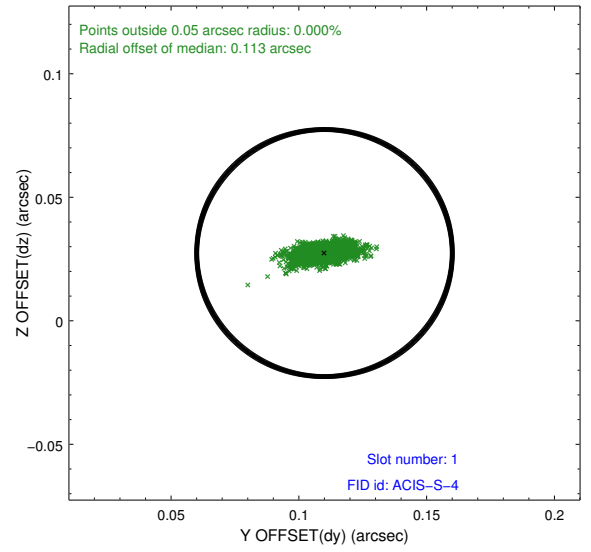
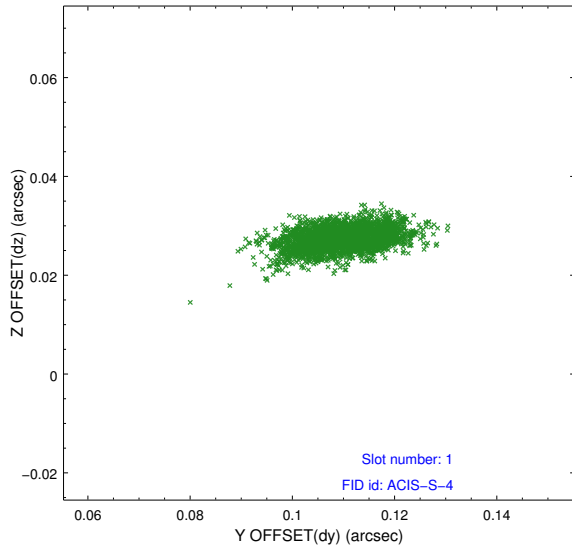


2.5 FID Slots

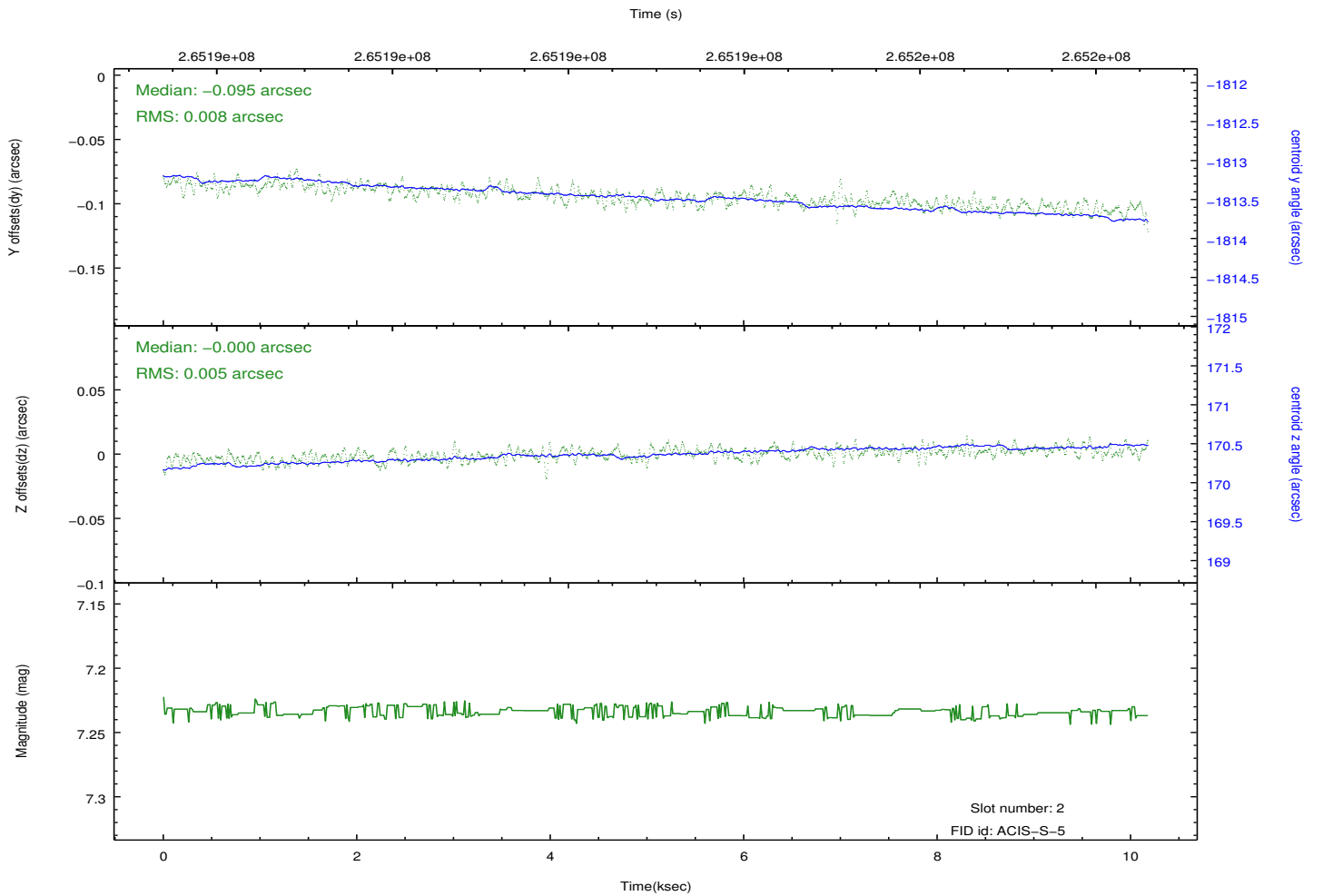
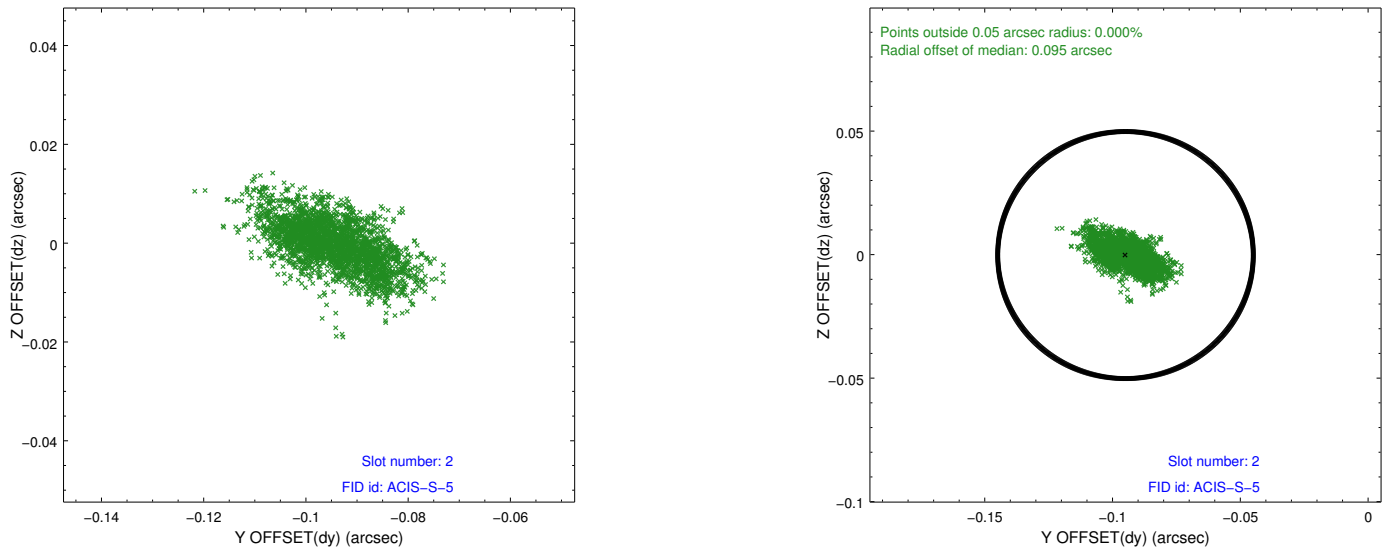
2.5.1 Slot 0



2.5.2 Slot 1



2.5.3 Slot 2



A Summary

A.1 Status

V&V Scientist	Jen Lauer
V&V Date (YYYY-MM-DD)	2012.04.03
V&V Edition	1
V&V Disposition and Status	OK
V&V Charge Time	10.1759999

A.2 Comments