

# V&V Reference Report

## L2 ASCDS Version : 8.4.5

Observation 714 - L2 Version 5  
Chandra X-Ray Center

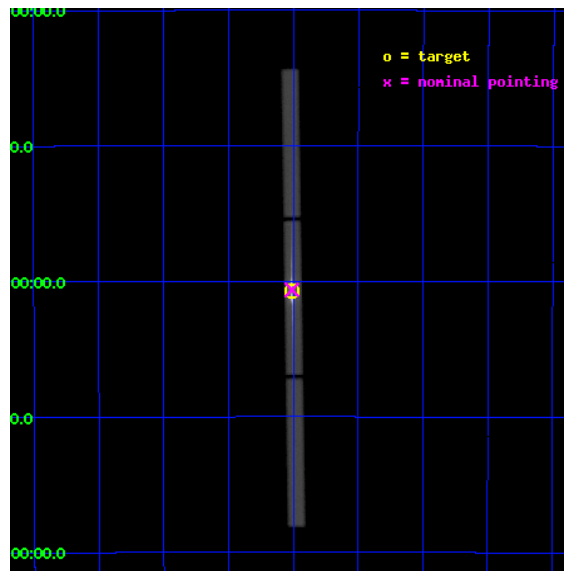
L2 Processing Date : Aug 24 2012

## Contents

<b>1</b>	<b>Front</b>	<b>2</b>
<b>2</b>	<b>OBI</b>	<b>3</b>
2.1	OBI . . . . .	3
2.1.1	Images . . . . .	3
2.1.2	Parameters . . . . .	4
2.1.3	Events . . . . .	4
2.2	Compared Parameters . . . . .	5
2.3	Aspect . . . . .	6
2.4	Star Slots . . . . .	9
2.4.1	Slot 3 . . . . .	9
2.4.2	Slot 4 . . . . .	10
2.4.3	Slot 5 . . . . .	11
2.4.4	Slot 6 . . . . .	12
2.4.5	Slot 7 . . . . .	13
2.5	FID Slots . . . . .	14
2.5.1	Slot 0 . . . . .	14
2.5.2	Slot 1 . . . . .	15
2.5.3	Slot 2 . . . . .	16
<b>3</b>	<b>Gratings</b>	<b>17</b>
3.1	LETG Arm . . . . .	17
<b>A</b>	<b>Summary</b>	<b>19</b>
A.1	Status . . . . .	19
A.2	Comments . . . . .	19

# 1 Front

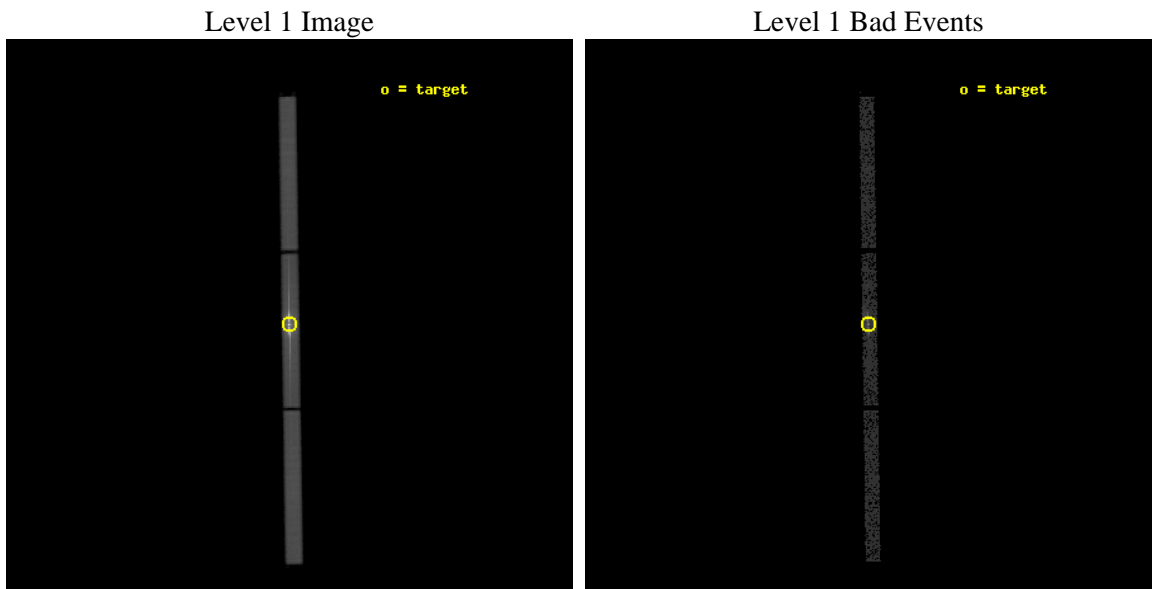
seq_num	400081	Sequence number
obs_id	714	Observation id
title	THE LOCATION OF THE MOST INTENSE UNIDENTIFIED X-RAY SOURCE ON THE CELESTIAL SPHERE	Proposal title
observer	Dr. Bruce Margon	Principal investigator
object	GX 17+2	Source name
ra_targ	274.005	Observer's specified target RA [deg]
dec_targ	-14.036444	Observer's specified target Dec [deg]
ra_nom	274.00534047184	Nominal RA [deg]
dec_nom	-14.031443112372	Nominal Dec [deg]
roll_nom	89.108202407959	Nominal Roll [deg]
revision	5	Processing version of data
ontime	11125.606656387	[s]
liveltime	11009.235347856	Ontime multiplied by DTCOR
l2events	1151520	Number of level 2 events



## 2 OBI

### 2.1 OBI

#### 2.1.1 Images



## 2.1.2 Parameters

obi_num	0	Obi number	sched_exp_time	11000.000000	[s] Scheduled observation exposure time
ascdsver	8.4.5	Processing system revision	ontime	11125.606656387	[s]
caldsver	4.5.1.1	&#160	l1events	1438743	Number of level 1 events
date	2012-08-24T04:59:15	Date and time of file creation			
revision	5	Processing version of data			

## 2.1.3 Events

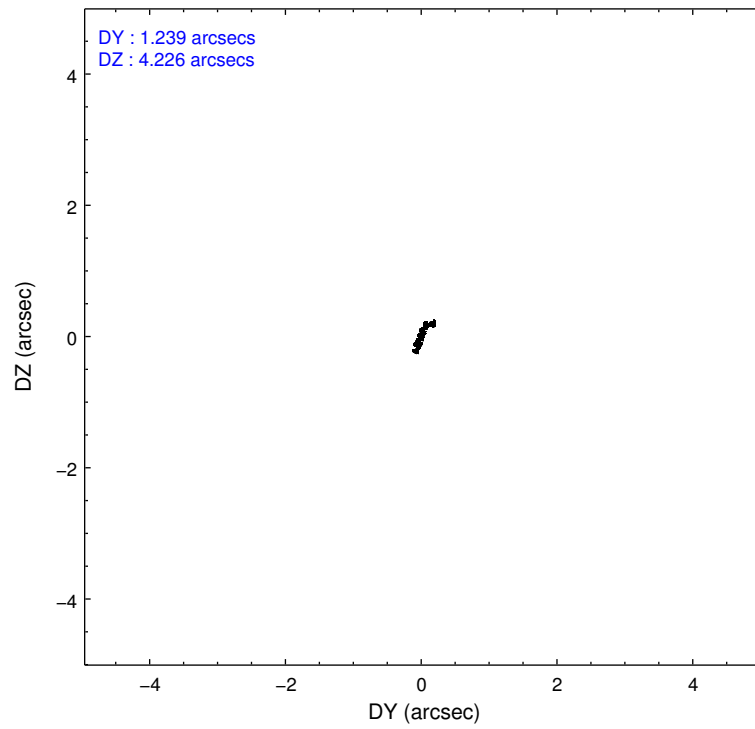
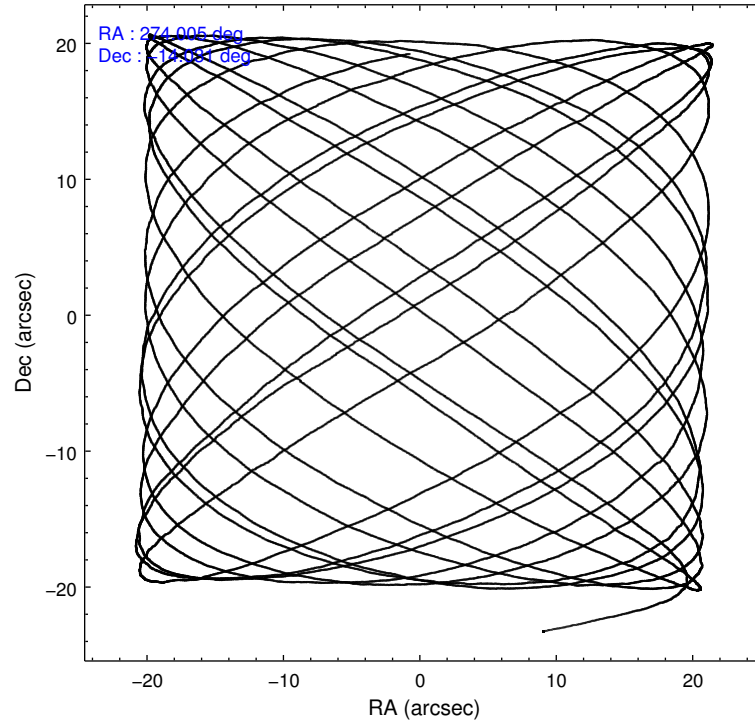
Level 1 Events

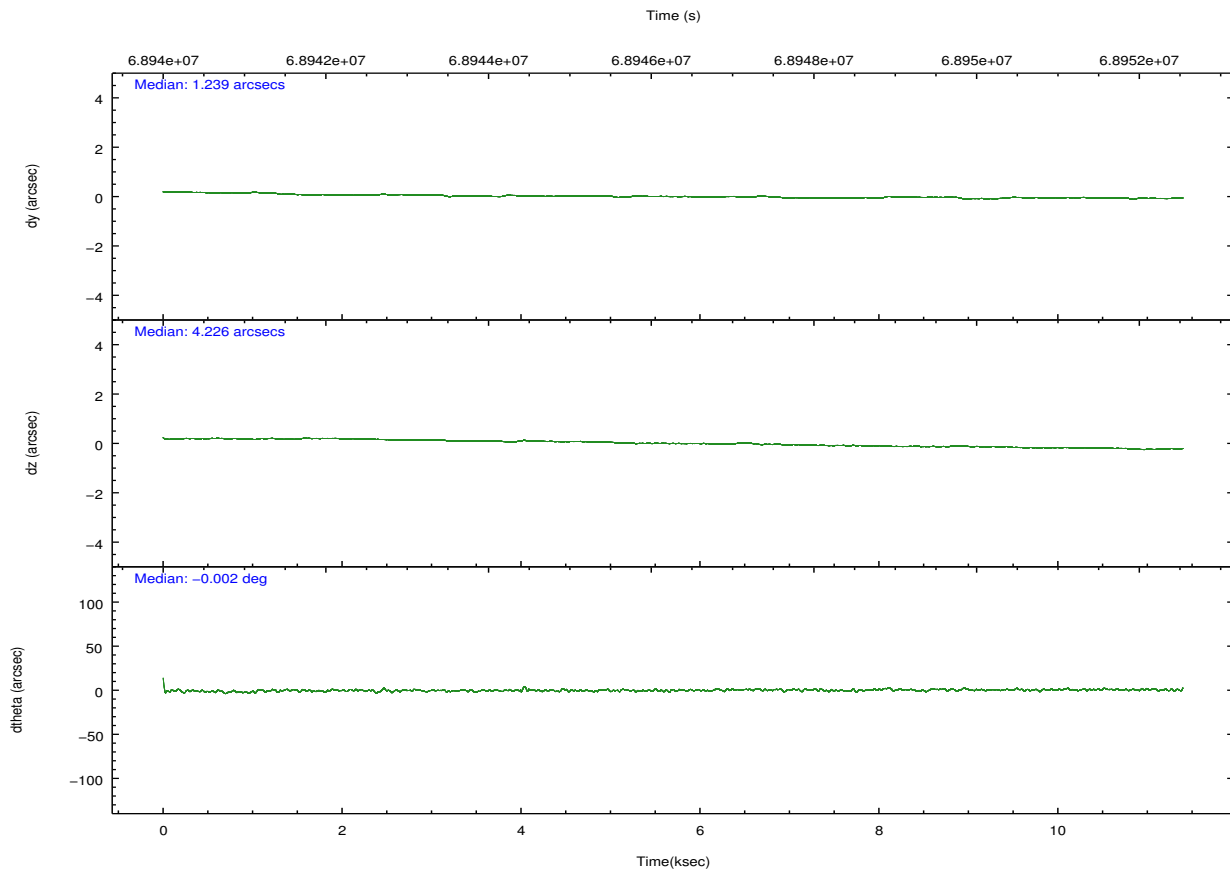
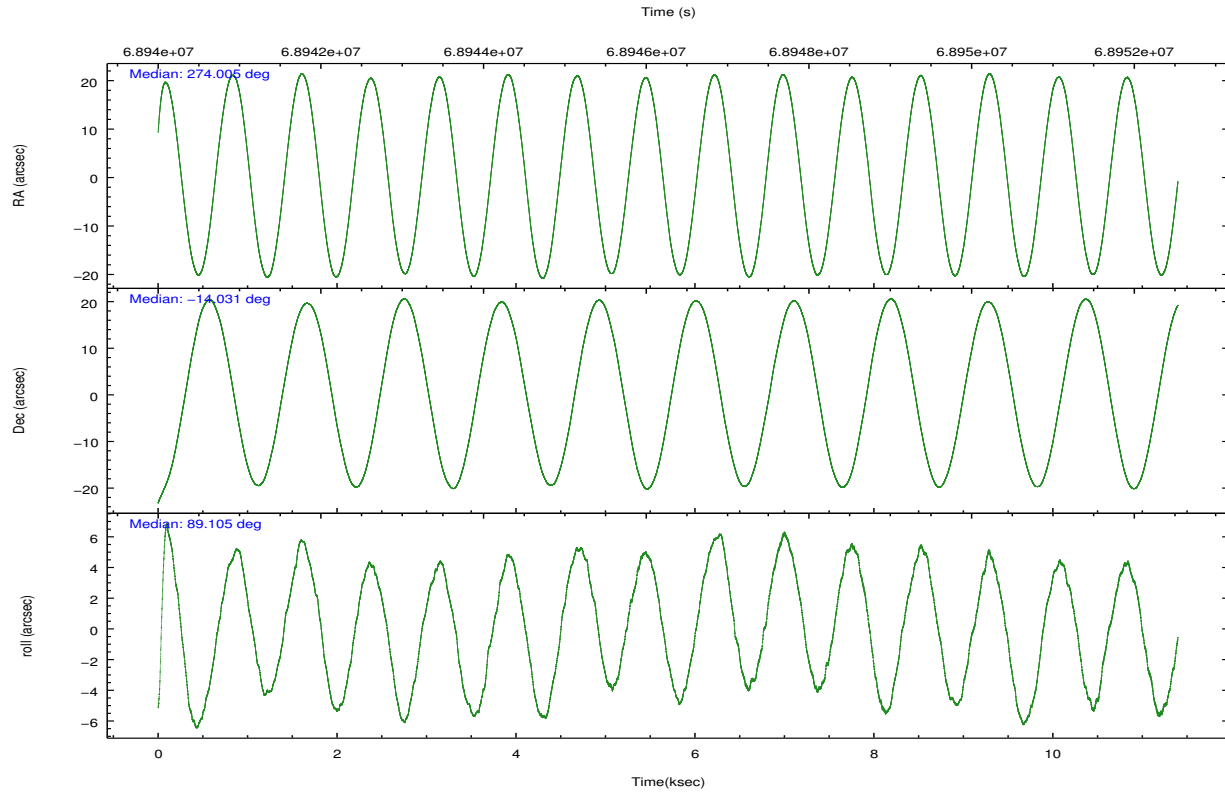
	<b>segment 1</b>	<b>segment 2</b>	<b>segment 3</b>
level 1 events	324891	799639	314213
rejected events	11914	23515	11716
rejected %	3%	2%	3%

## 2.2 Compared Parameters

Parameter	Planned	Actual	Parameter	Planned	Actual
Instrument	HRC	HRC	Obspar format version number	7	7
Detector	HRC-S	HRC-S	Obspar file type	PREDICTED	ACTUAL
Grating	LETG	LETG	Obspar update status	NONE	UPDATED
Data mode	OBSERVING	OBSERVING			
Observation mode	POINTING	POINTING			
[deg] Pointing RA	274.020816	274.0053404718436			
[deg] Pointing Dec	-14.056042	-14.0314431123723			
[deg] Pointing Roll	89.044633	89.10820240795924			
[mm] SIM focus pos	-1.429586	-1.428180813131781			
[mm] SIM defocus	0.1037507710433287	0.1051558262725154			
[mm] SIM translation stage pos	250.455976	250.466033080201			
[mm] SIM translation stage offset	0	-0.01005468664627074			
[s] Observation start time (MET)	68940965.184000	68939692.16538499			
Observation start date	2000-03-08T22:15:01	2000-03-08T21:54:52			
[s] Observation end time (MET)	68951965.184000	68952413.95334899			
Observation end date	2000-03-09T01:18:21	2000-03-09T01:26:53			

## 2.3 Aspect



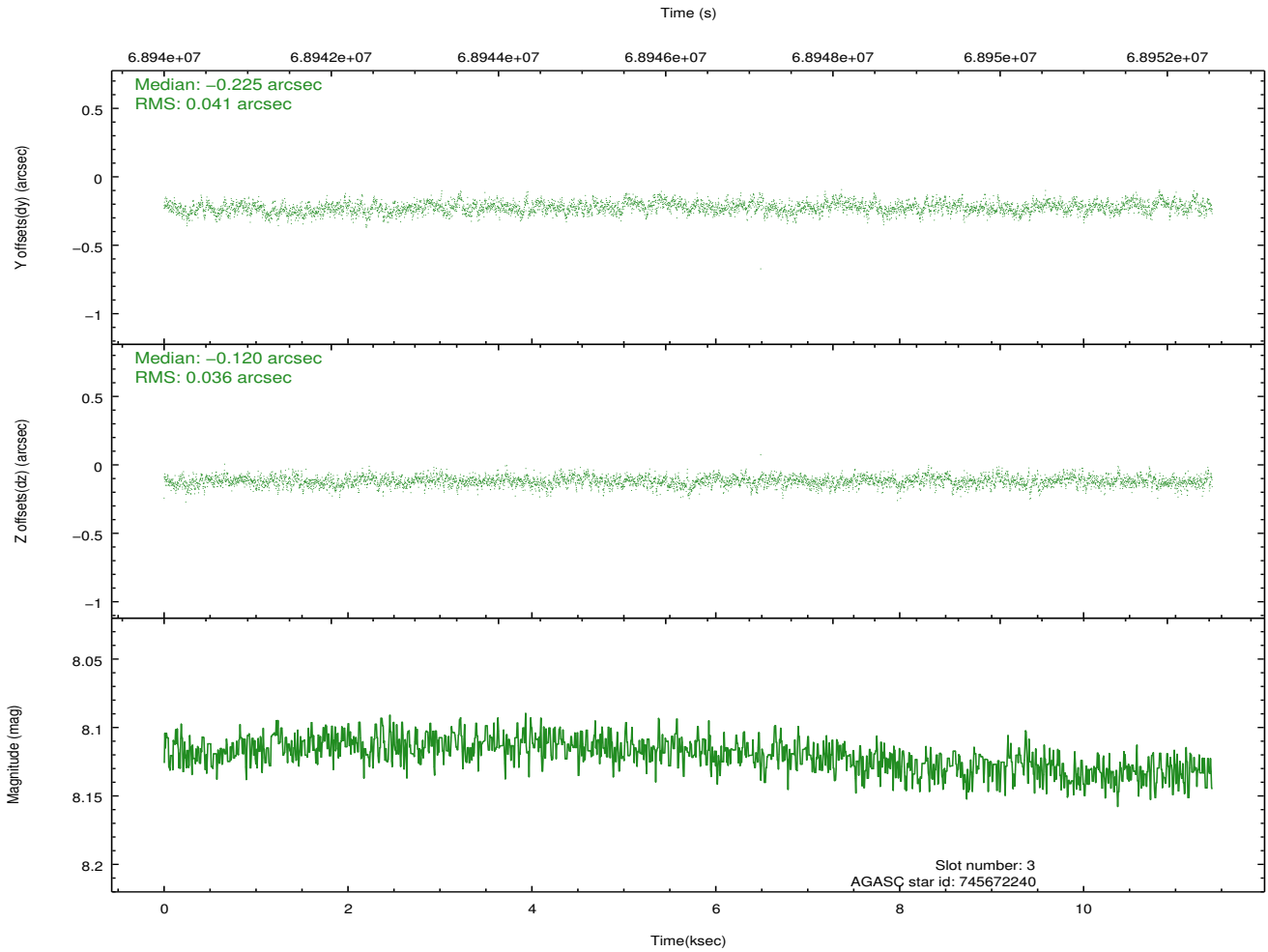
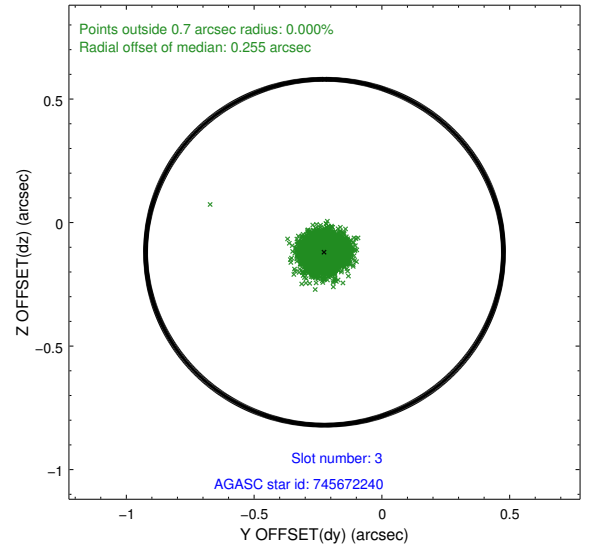
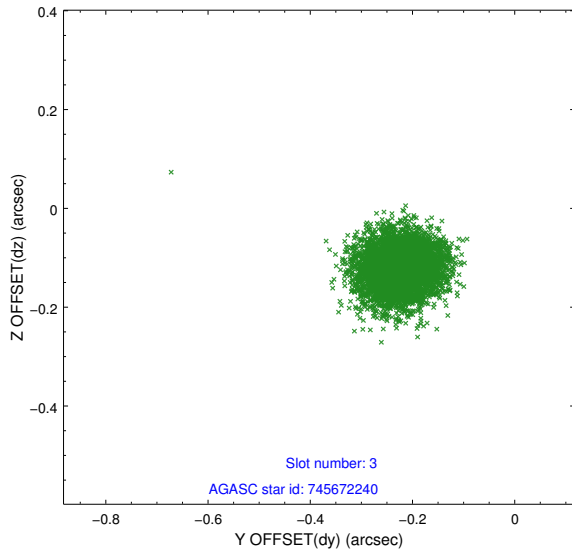


### Slot Statistics

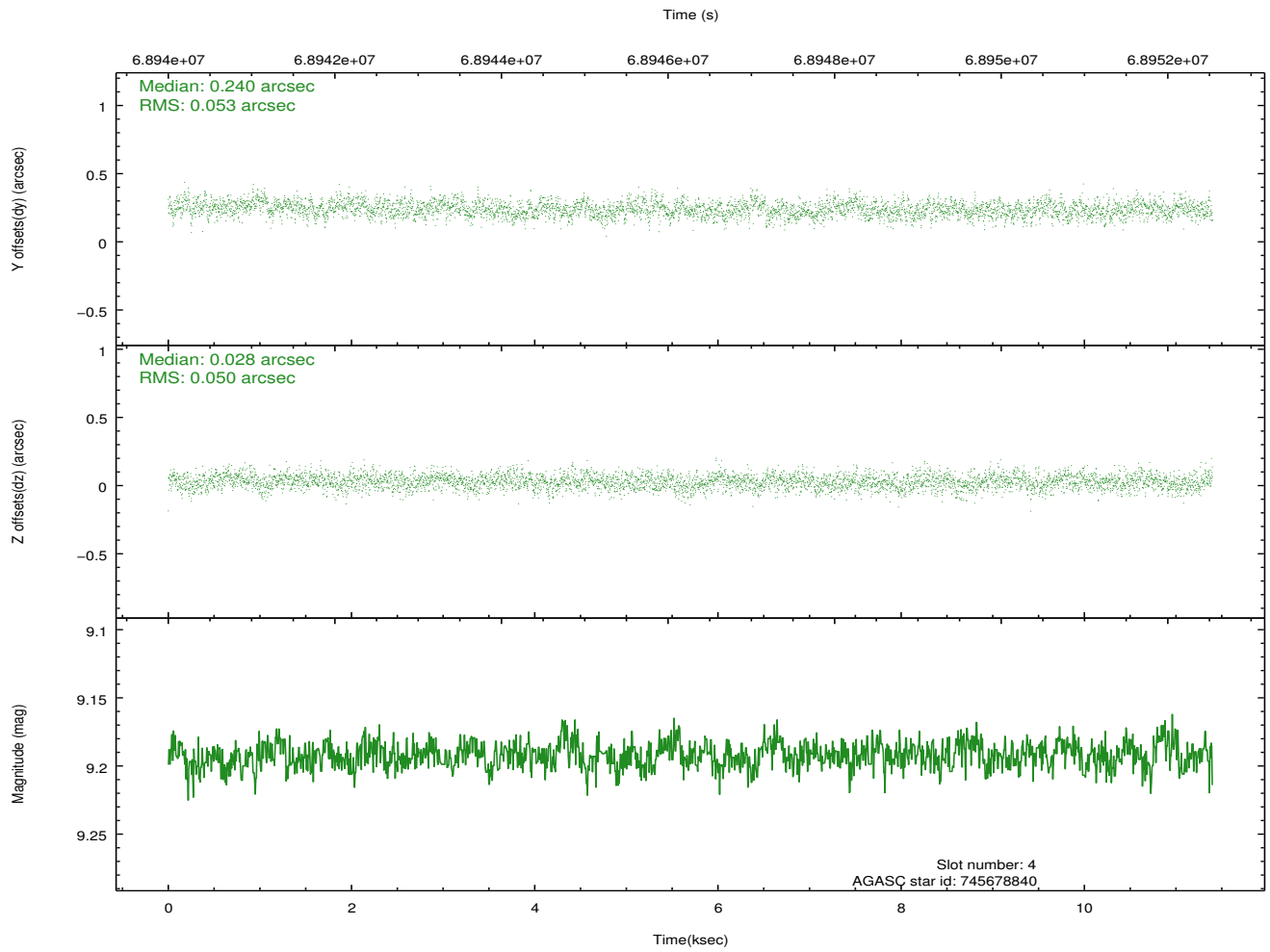
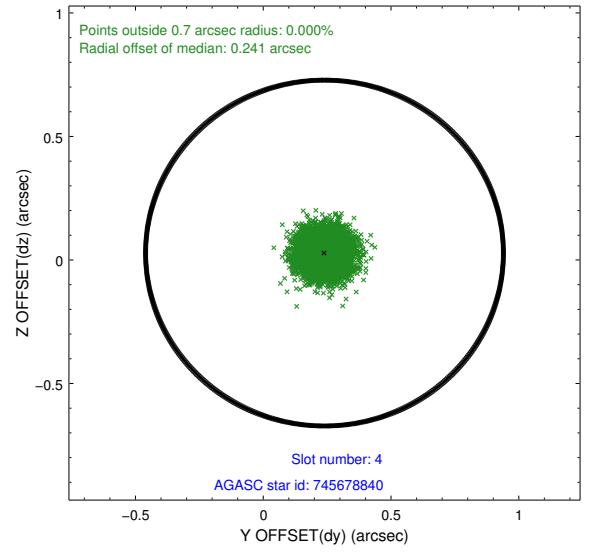
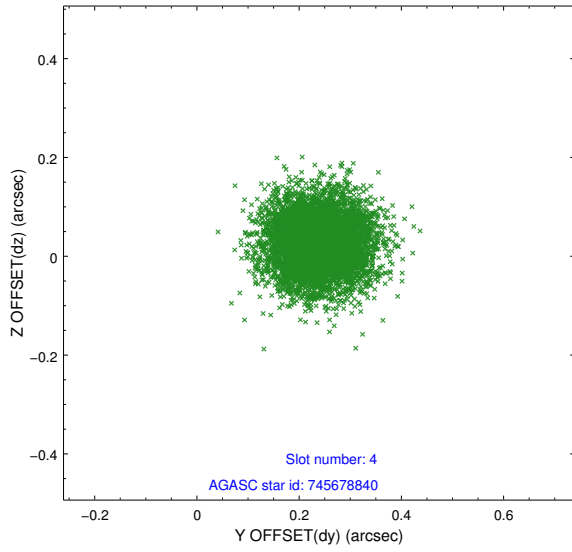
slot	status	id	mag	n_pts	med_dy	med_dz	dr1	dr2	ra	dec	mean_y	mean_z
0	FID	HRC-S-1	6.97	2780	0.119	-0.109	0.011	0.017	0.000000	0.000000	-1155.28	-452.65
1	FID	HRC-S-3	7.00	2780	0.160	-0.092	0.012	0.018	0.000000	0.000000	-1158.35	576.73
2	FID	HRC-S-4	6.94	2780	0.110	-0.096	0.009	0.020	0.000000	0.000000	1242.58	579.61
3	GUIDE	745672240	8.12	5561	-0.225	-0.120	0.057	0.095	273.978585	-13.574354	1731.03	176.30
4	GUIDE	745678840	9.19	5556	0.240	0.028	0.077	0.126	274.156904	-14.659171	-2162.71	-510.59
5	GUIDE	745670248	9.64	5557	0.144	0.147	0.093	0.149	274.219794	-14.482145	-1522.80	-719.49
6	GUIDE	745542048	9.66	5558	0.005	-0.212	0.111	0.174	273.427657	-14.174658	-464.59	2062.16
7	GUIDE	745673200	9.78	5560	-0.165	0.158	0.133	0.208	274.402746	-13.459876	2166.90	-1301.01

## 2.4 Star Slots

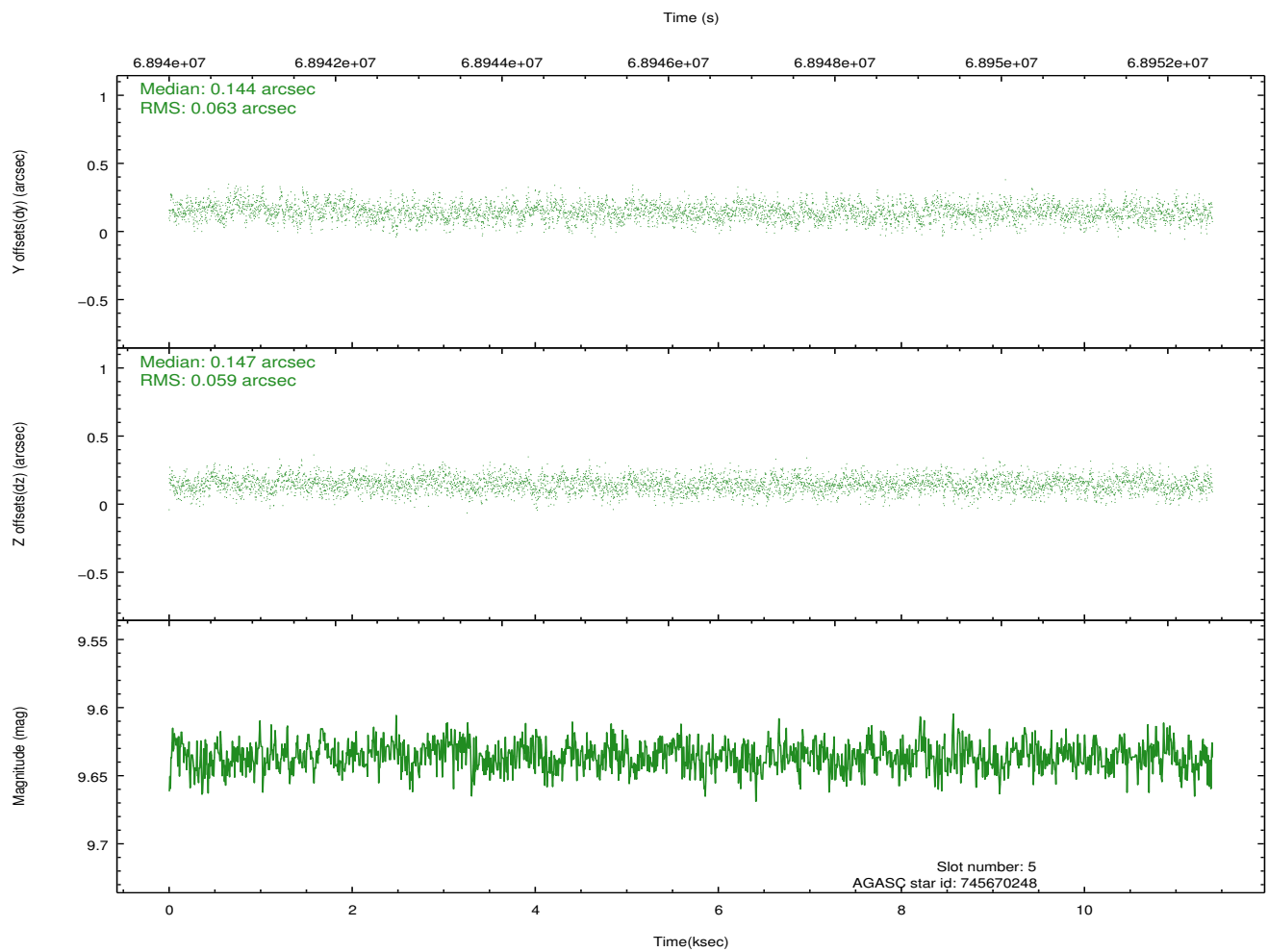
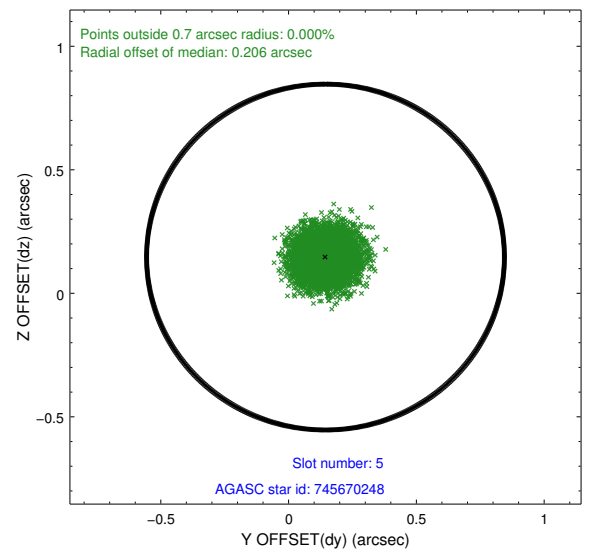
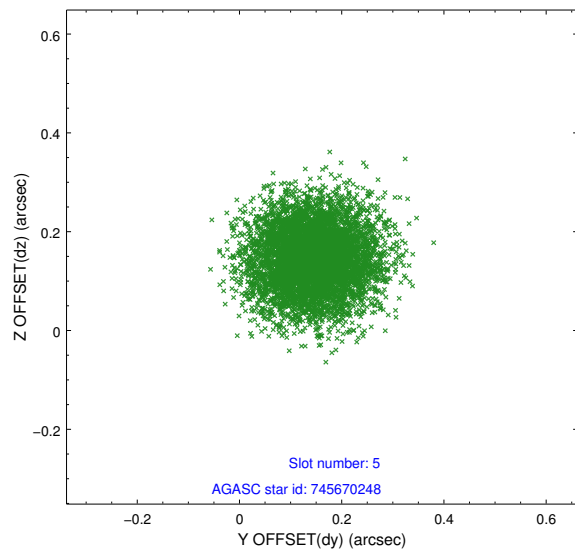
### 2.4.1 Slot 3



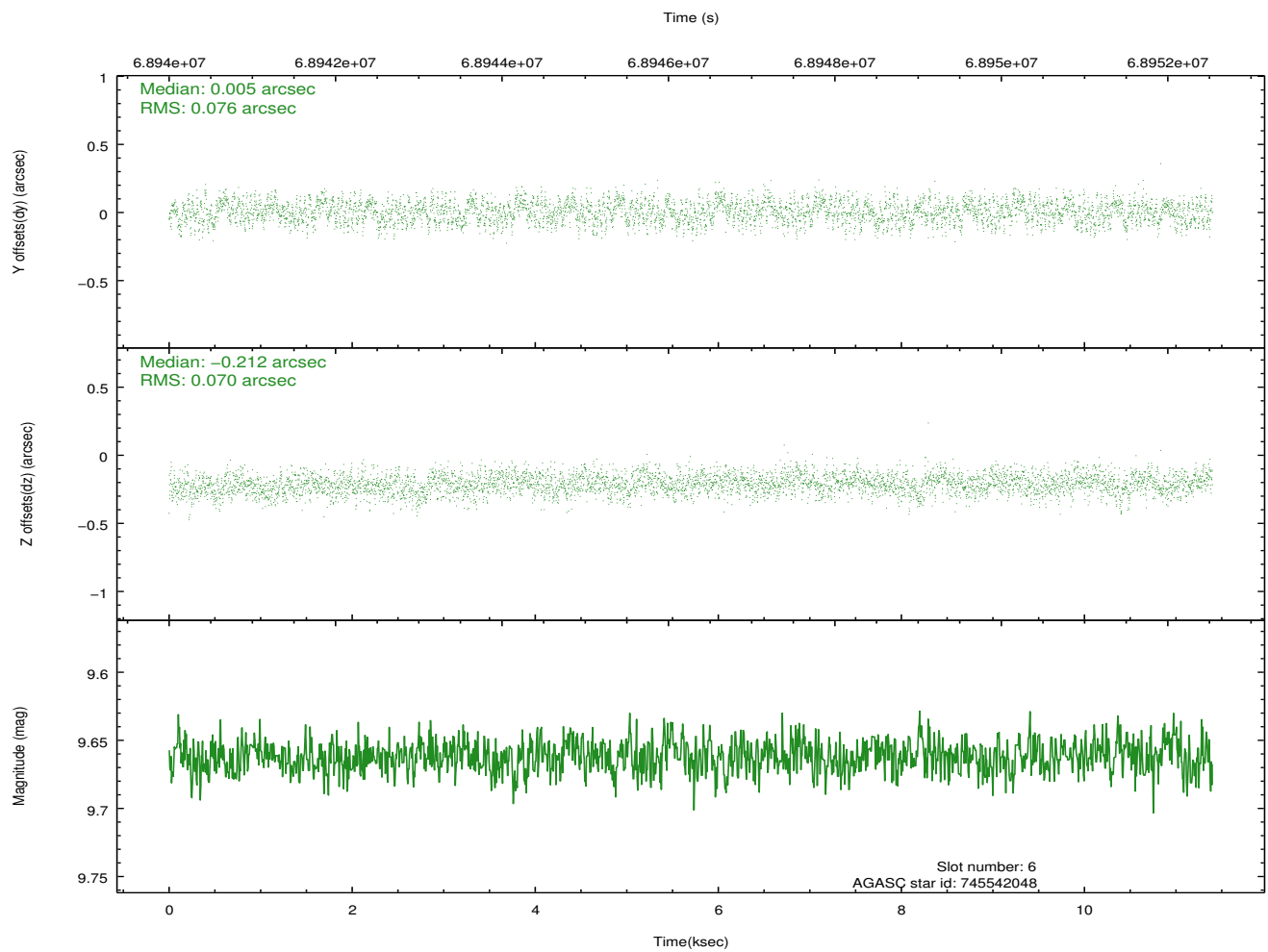
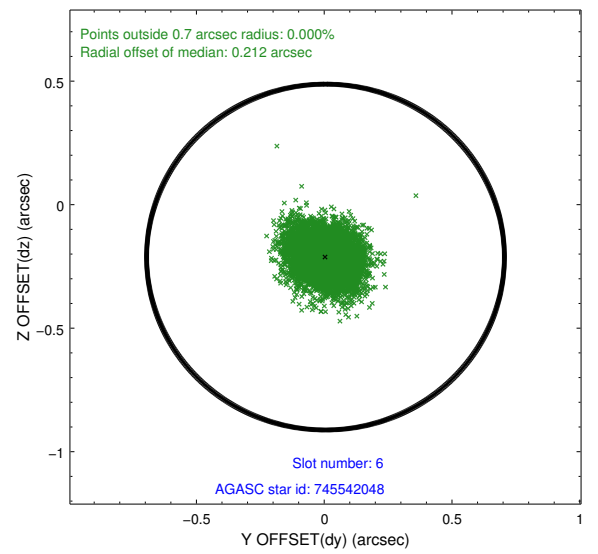
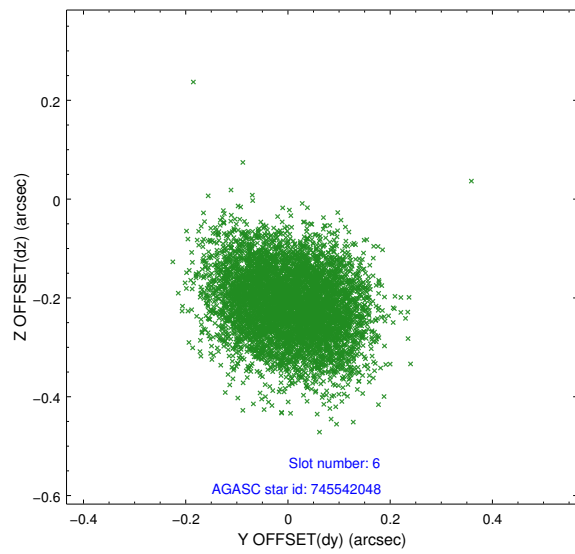
### 2.4.2 Slot 4



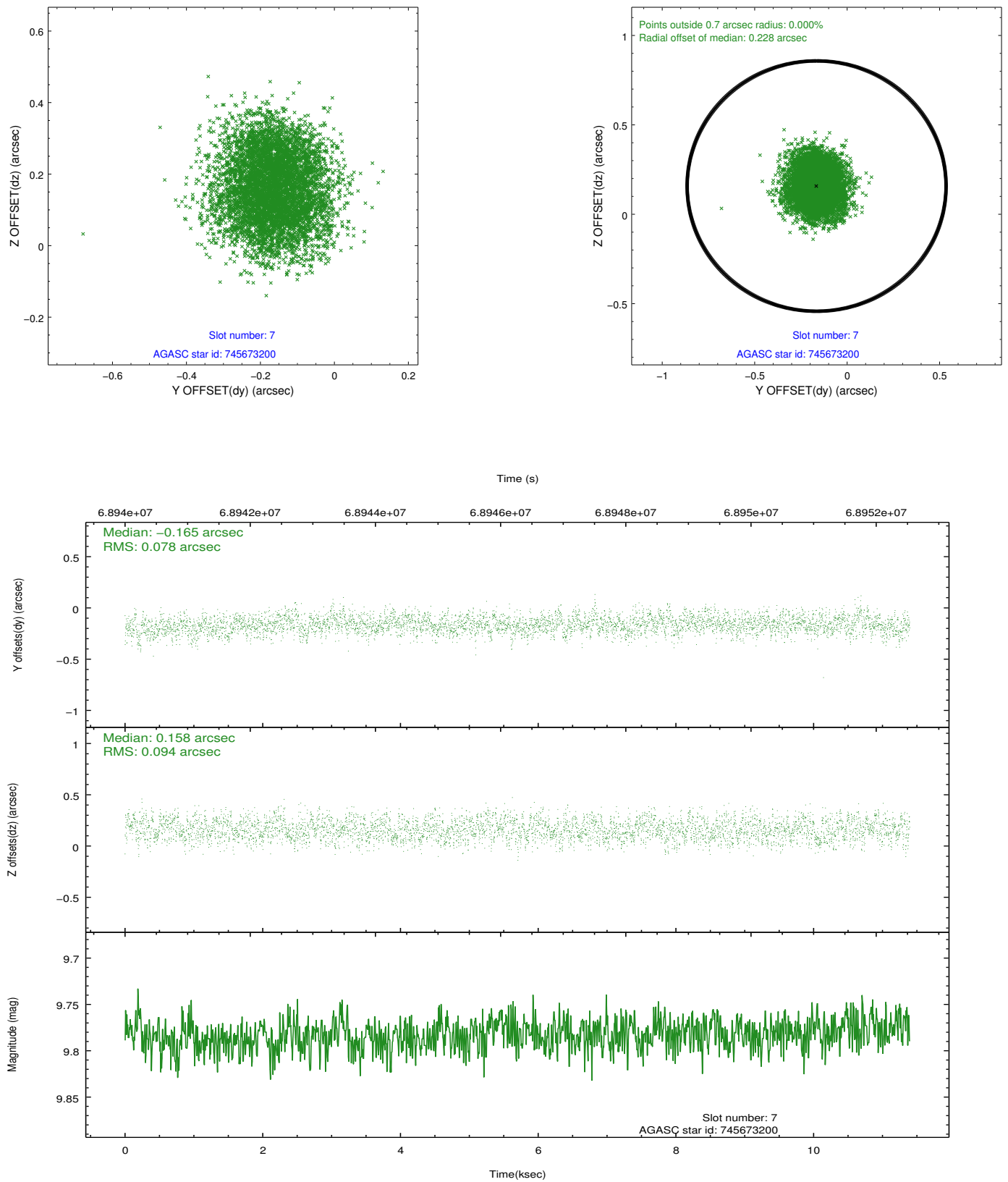
### 2.4.3 Slot 5



## 2.4.4 Slot 6

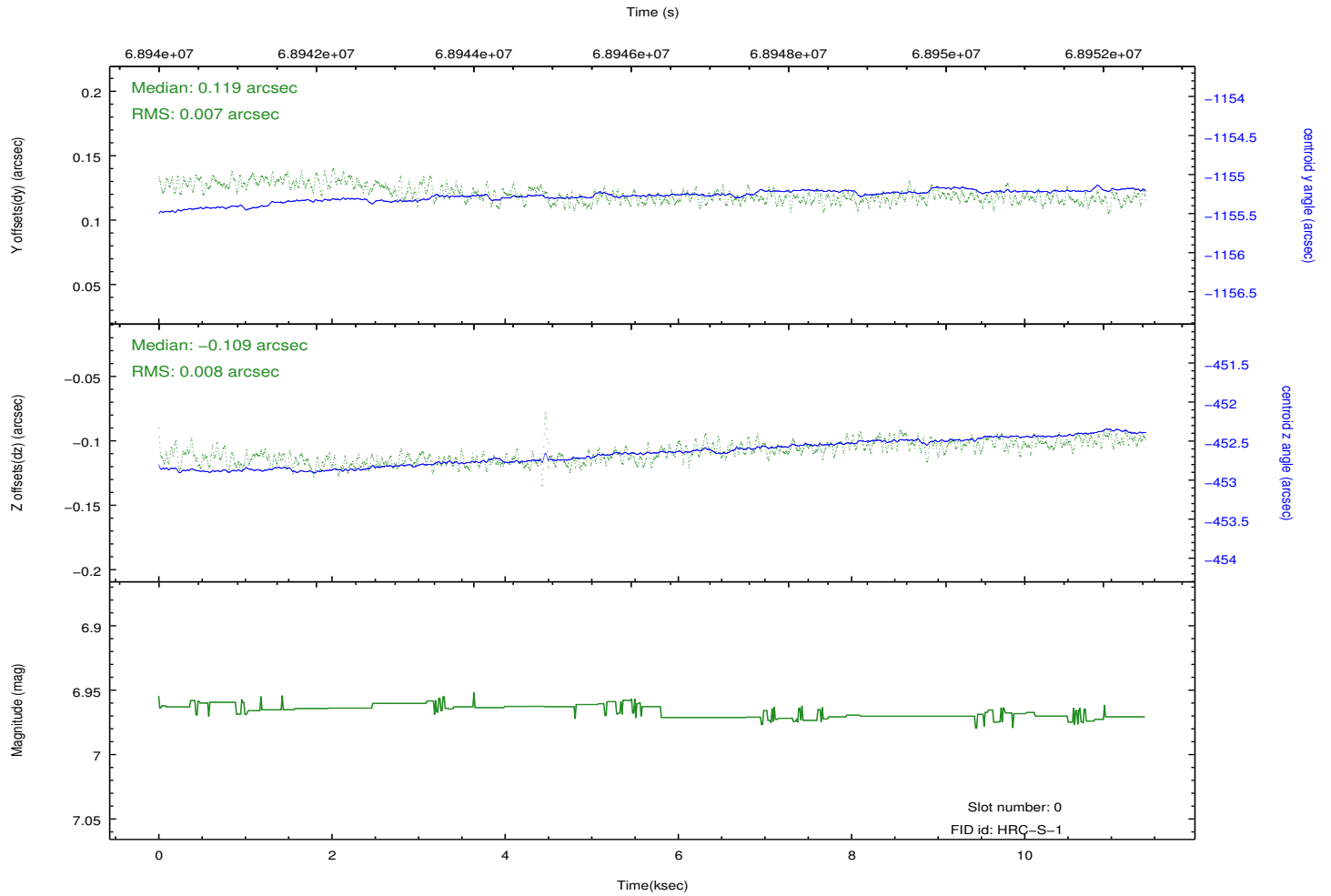
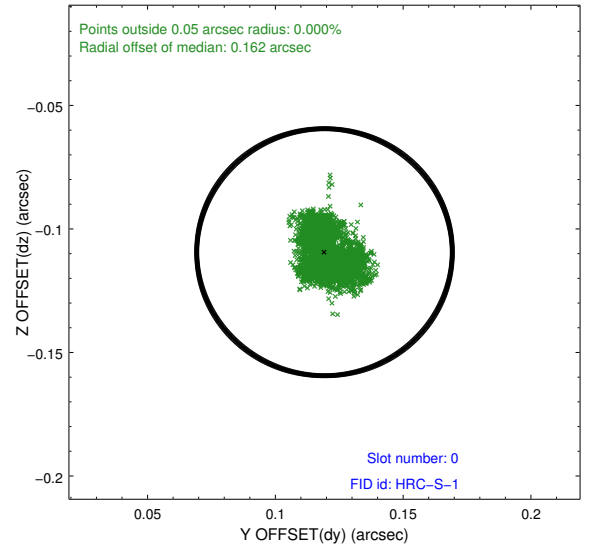
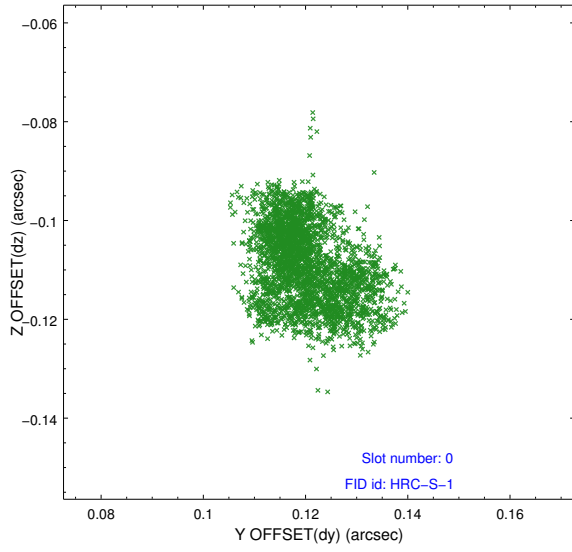


## 2.4.5 Slot 7

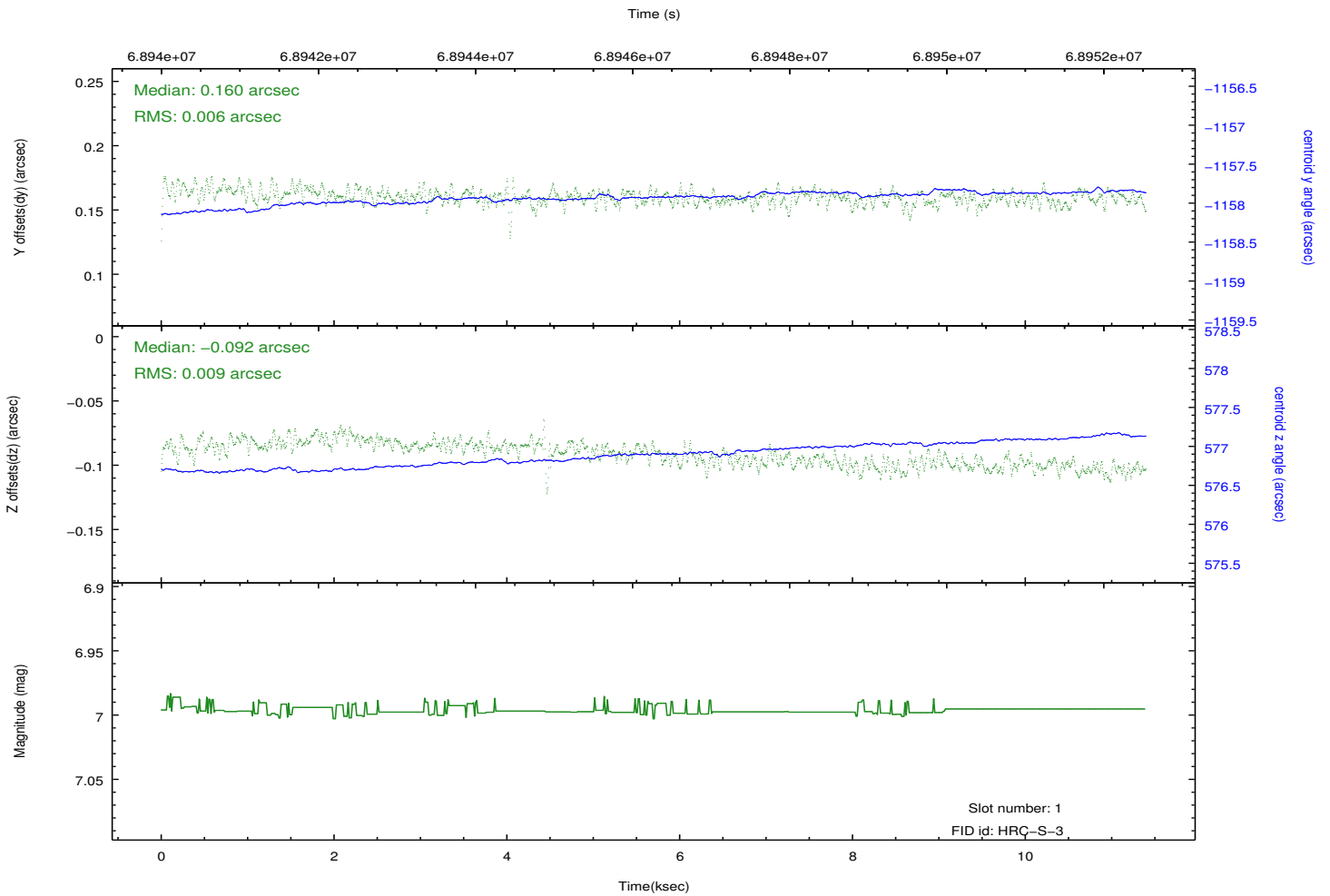
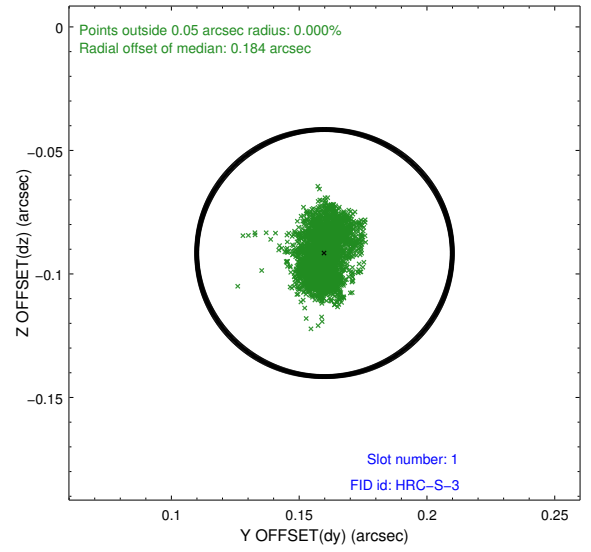
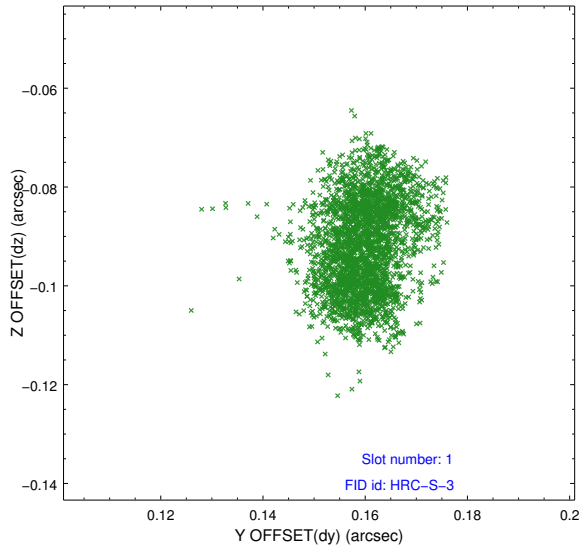


## 2.5 FID Slots

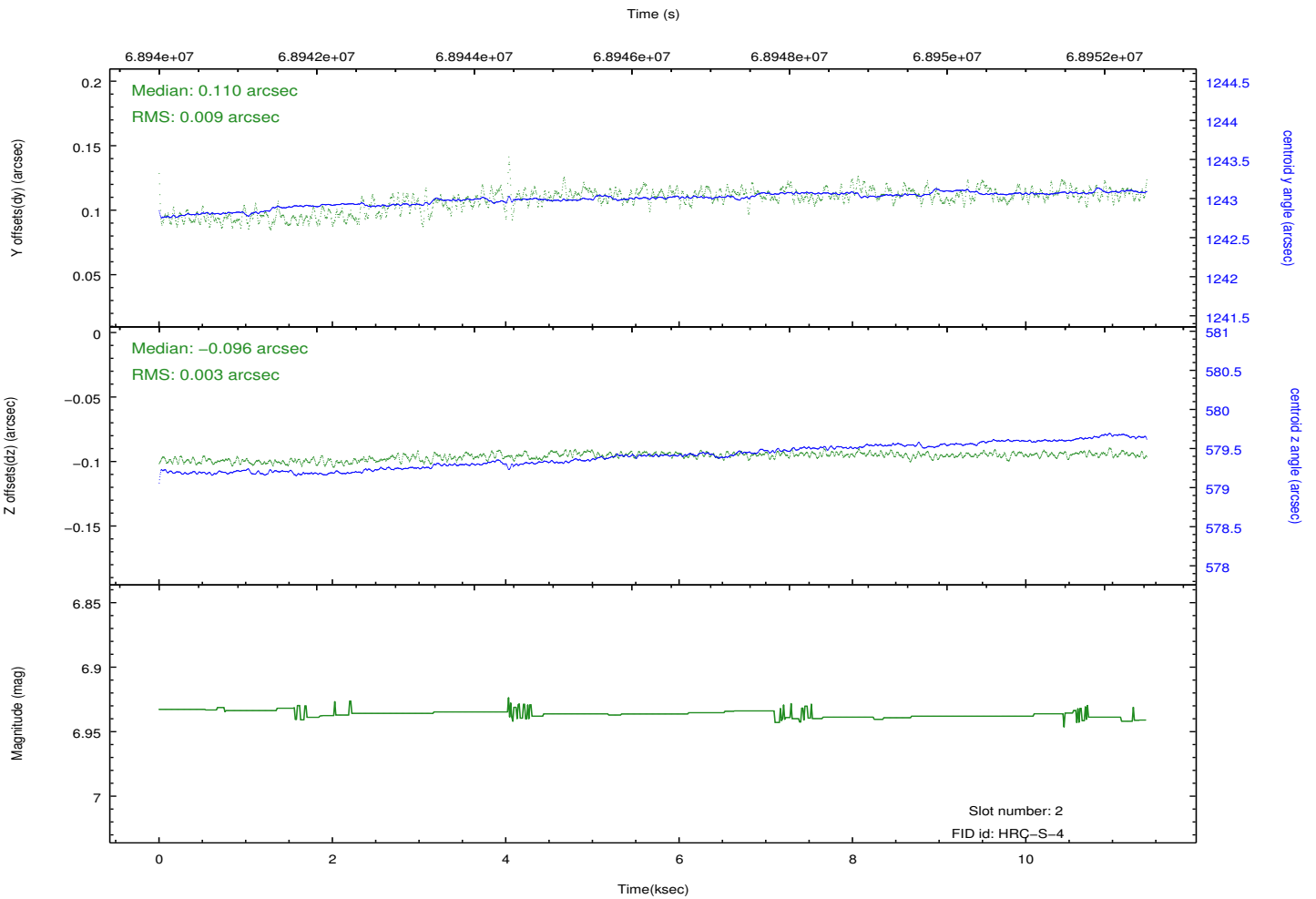
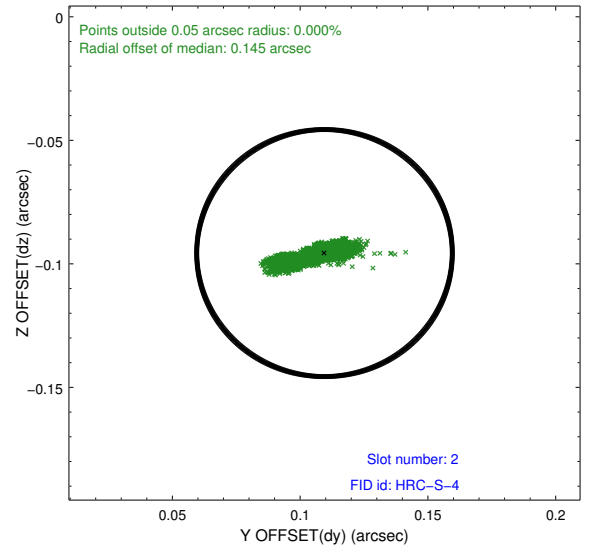
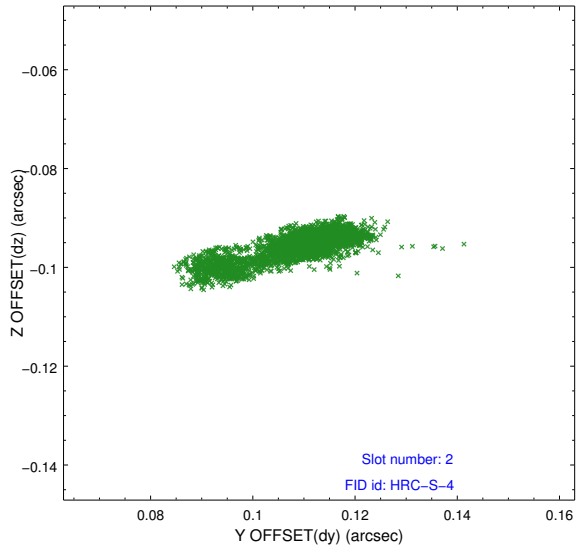
### 2.5.1 Slot 0



## 2.5.2 Slot 1

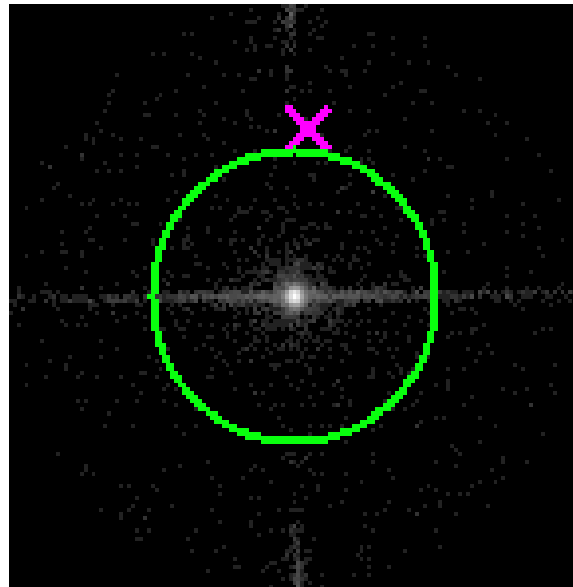


### 2.5.3 Slot 2

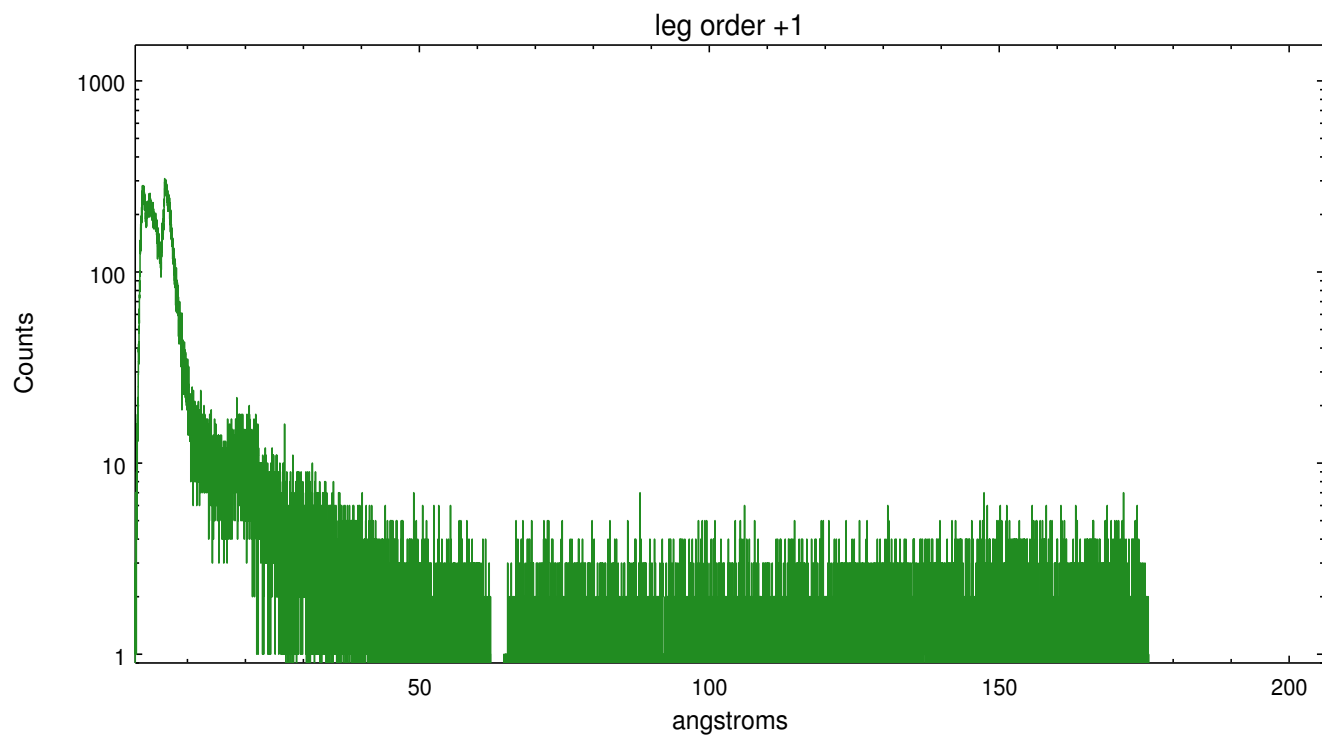
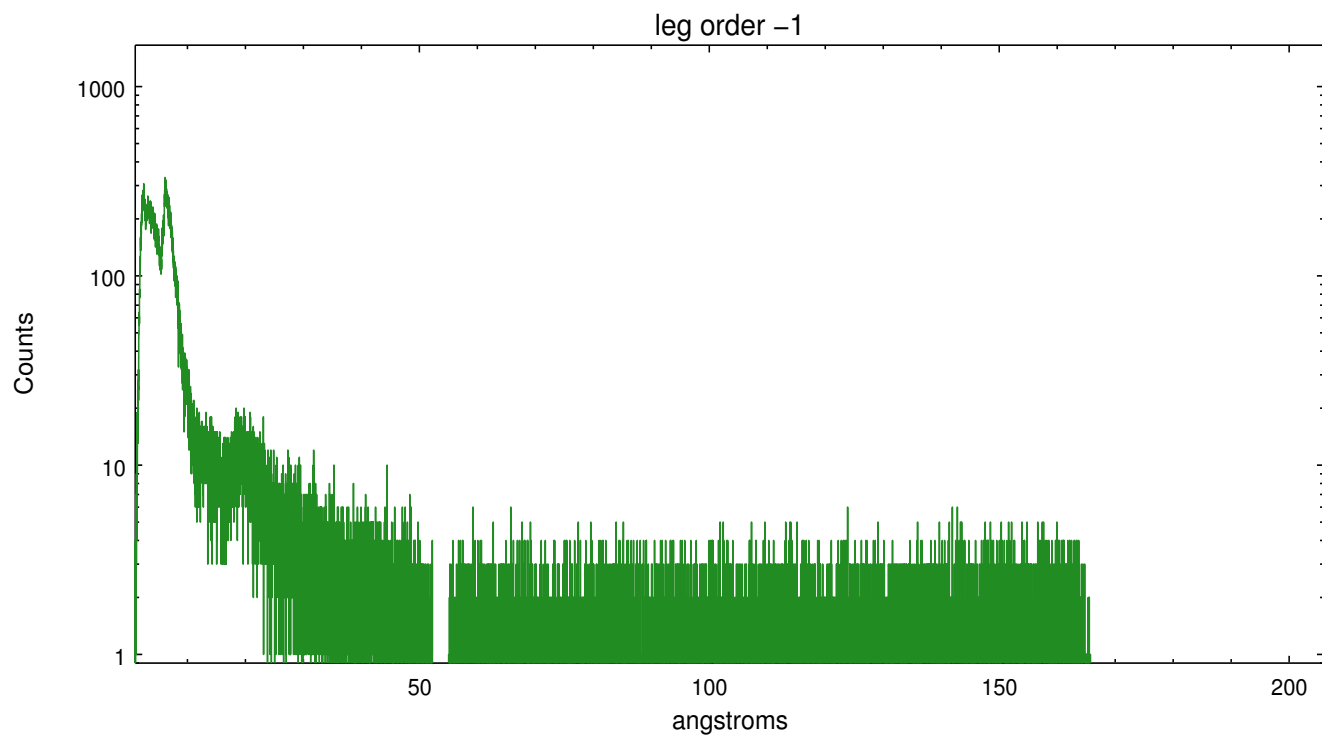


### 3 Gratings

#### 3.1 LETG Arm



LETG Zero Order



# A Summary

## A.1 Status

V&V Scientist	Joy Nichols
V&V Date (YYYY-MM-DD)	2012.08.24
V&V Edition	1
V&V Disposition and Status	OK
V&V Charge Time	11.123

## A.2 Comments