

# V&V Reference Report

## L2 ASCDS Version : 8.4.3.1

Observation 7284 - L2 Version 4  
Chandra X-Ray Center

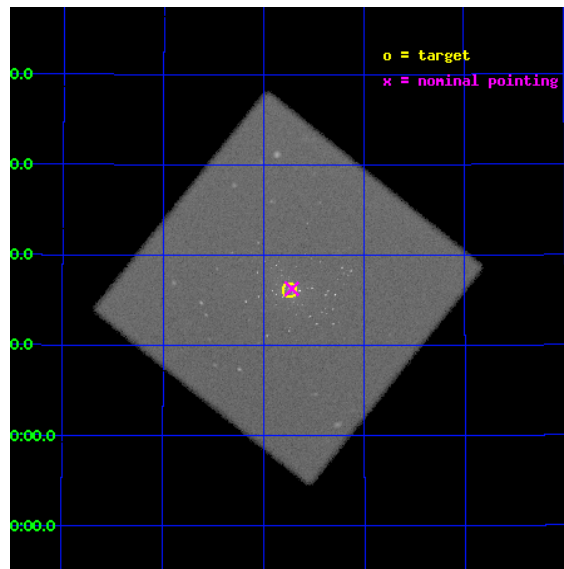
L2 Processing Date : Aug 11 2012

## Contents

<b>1</b>	<b>Front</b>	<b>2</b>
<b>2</b>	<b>OBI</b>	<b>3</b>
2.1	OBI . . . . .	3
2.1.1	Images . . . . .	3
2.1.2	Parameters . . . . .	4
2.1.3	Events . . . . .	4
2.2	Compared Parameters . . . . .	5
2.3	Aspect . . . . .	6
2.4	Star Slots . . . . .	9
2.4.1	Slot 3 . . . . .	9
2.4.2	Slot 4 . . . . .	10
2.4.3	Slot 5 . . . . .	11
2.4.4	Slot 6 . . . . .	12
2.4.5	Slot 7 . . . . .	13
2.5	FID Slots . . . . .	14
2.5.1	Slot 0 . . . . .	14
2.5.2	Slot 1 . . . . .	15
2.5.3	Slot 2 . . . . .	16
<b>A</b>	<b>Summary</b>	<b>17</b>
A.1	Status . . . . .	17
A.2	Comments . . . . .	17

# 1 Front

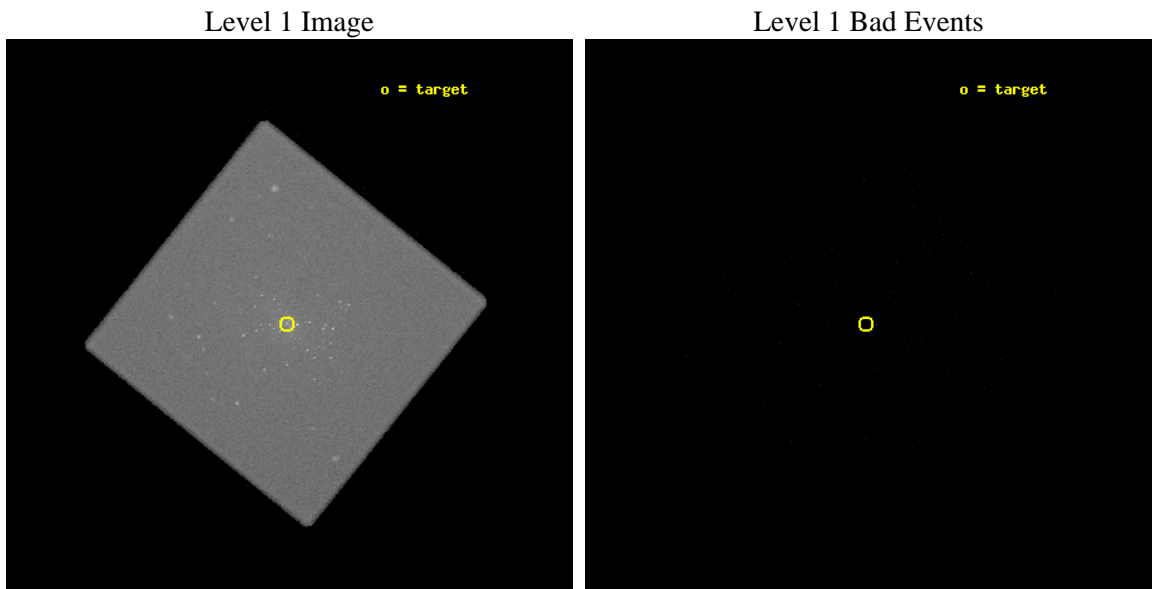
seq_num	300174	Sequence number
obs_id	7284	Observation id
title	Monitoring the supersoft source state of many optical novae in the core of M 31	Proposal title
observer	Dr. Wolfgang Pietsch	Principal investigator
object	M31	Source name
ra_targ	10.684583	Observer's specified target RA [deg]
dec_targ	41.269278	Observer's specified target Dec [deg]
ra_nom	10.679701467268	Nominal RA [deg]
dec_nom	41.271328239291	Nominal Dec [deg]
roll_nom	173.77374169864	Nominal Roll [deg]
revision	4	Processing version of data
ontime	20185.582200229	[s]
livetime	20002.372148303	Ontime multiplied by DTCOR
l2events	1058935	Number of level 2 events



## 2 OBI

### 2.1 OBI

#### 2.1.1 Images



### 2.1.2 Parameters

obi_num	1	Obi number	sched_exp_time	20000.000000	[s] Scheduled observation exposure time
ascdsver	8.4.5	Processing system revision	ontime	20185.582200229	[s]
caldbver	4.5.1.1	&#160	l1events	1580196	Number of level 1 events
date	2012-08-11T14:53:39	Date and time of file creation			
revision	4	Processing version of data			

### 2.1.3 Events

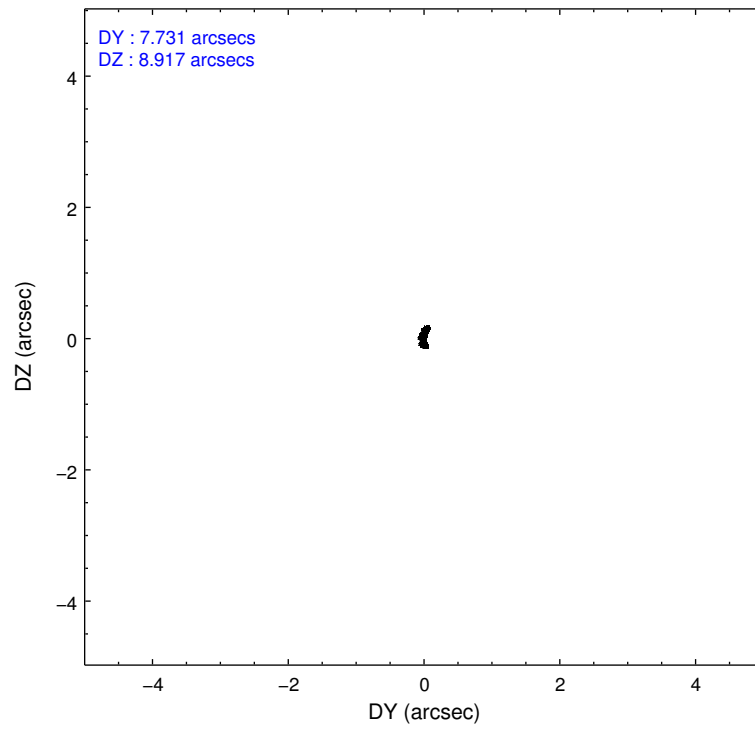
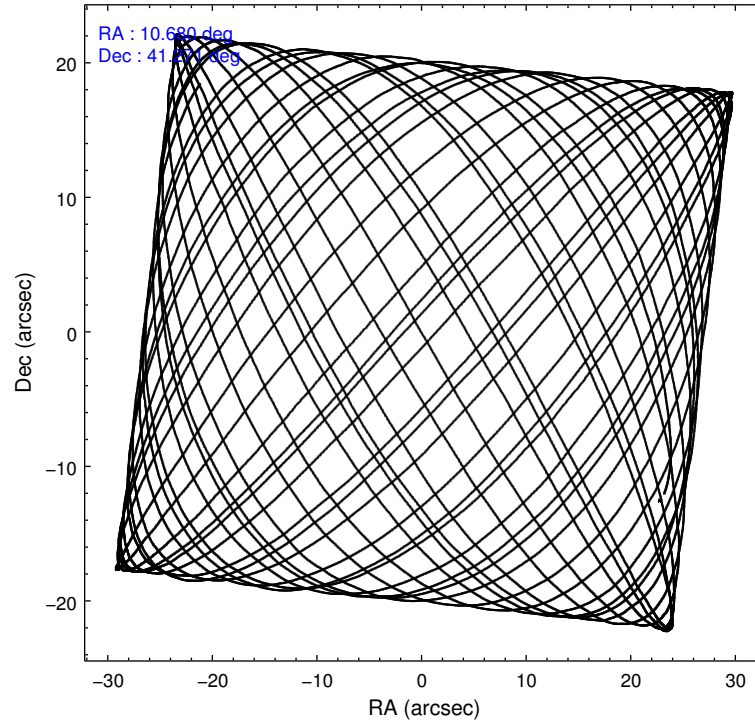
#### Level 1 Events

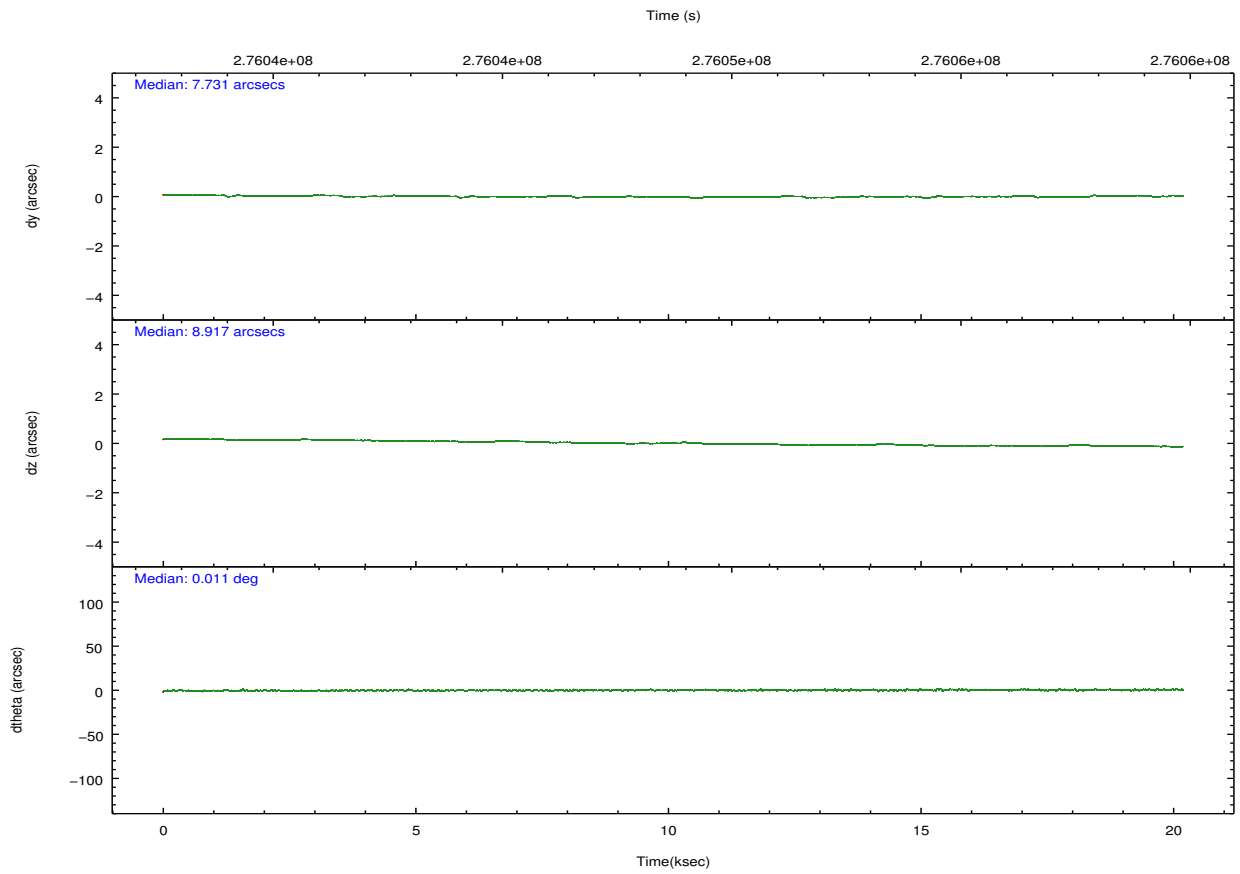
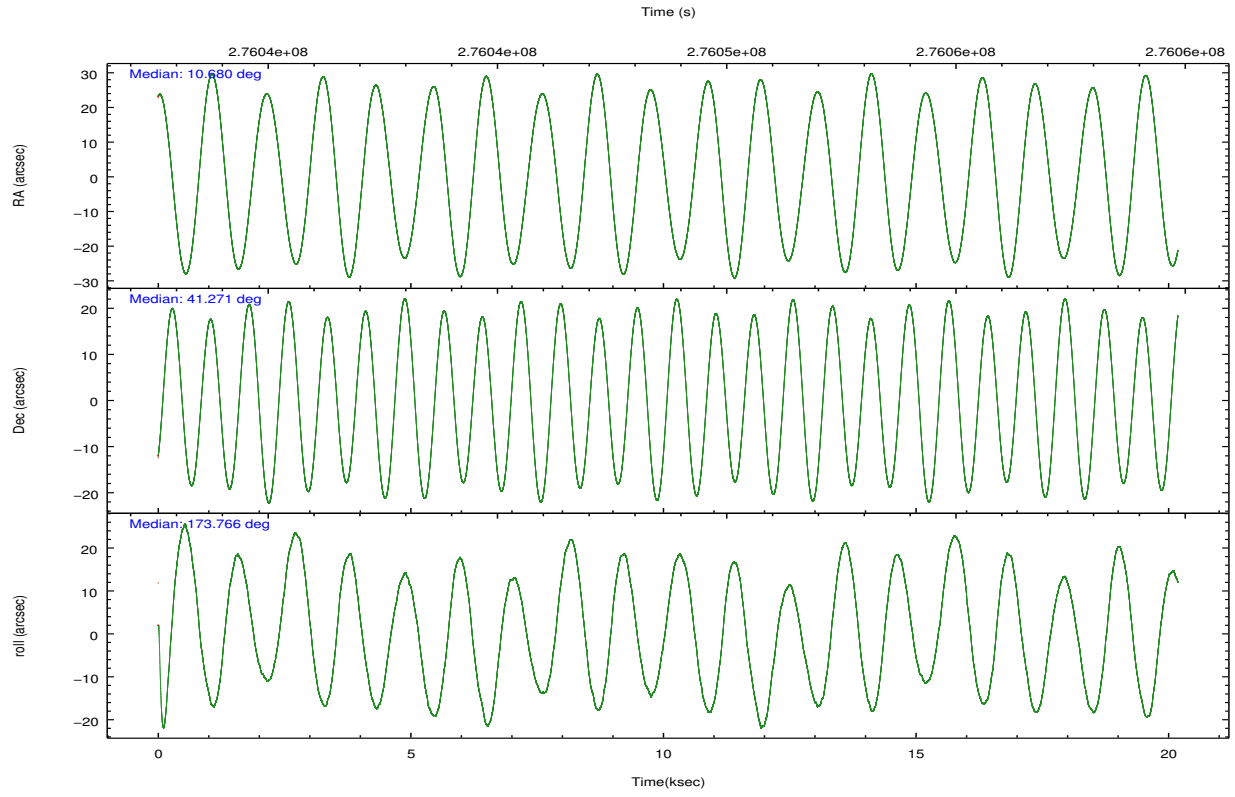
	<b>segment 0</b>
level 1 events	1580196
rejected events	32373
rejected %	2%

## 2.2 Compared Parameters

Parameter	Planned	Actual	Parameter	Planned	Actual
Instrument	HRC	HRC	Obspar format version number	7	7
Detector	HRC-I	HRC-I	Obspar file type	PREDICTED	ACTUAL
Grating	NONE	NONE	Obspar update status	NONE	UPDATED
Data mode	OBSERVING	OBSERVING			
Observation mode	POINTING	POINTING			
[deg] Pointing RA	10.712411	10.6797014672676			
[deg] Pointing Dec	41.282808	41.27132823929141			
[deg] Pointing Roll	173.847637	173.7737416986374			
[s] Window start time (MET)	275875265.184000	275875265.184000			
[s] Window stop time (MET)	276307205.184000	276307205.184000			
[mm] SIM focus pos	-1.040293	-1.038866356238299			
[mm] SIM defocus	0	0.001426264420575141			
[mm] SIM translation stage pos	126.985494	126.9854943052878			
[mm] SIM translation stage offset	0	-5.413686238853188e-06			
[s] Observation start time (MET)	276038808.184000	276038239.30421			
Observation start date	2006-09-30T21:25:43	2006-09-30T21:17:19			
[s] Observation end time (MET)	276058808.184000	276059720.23022			
Observation end date	2006-10-01T02:59:03	2006-10-01T03:15:20			

## 2.3 Aspect



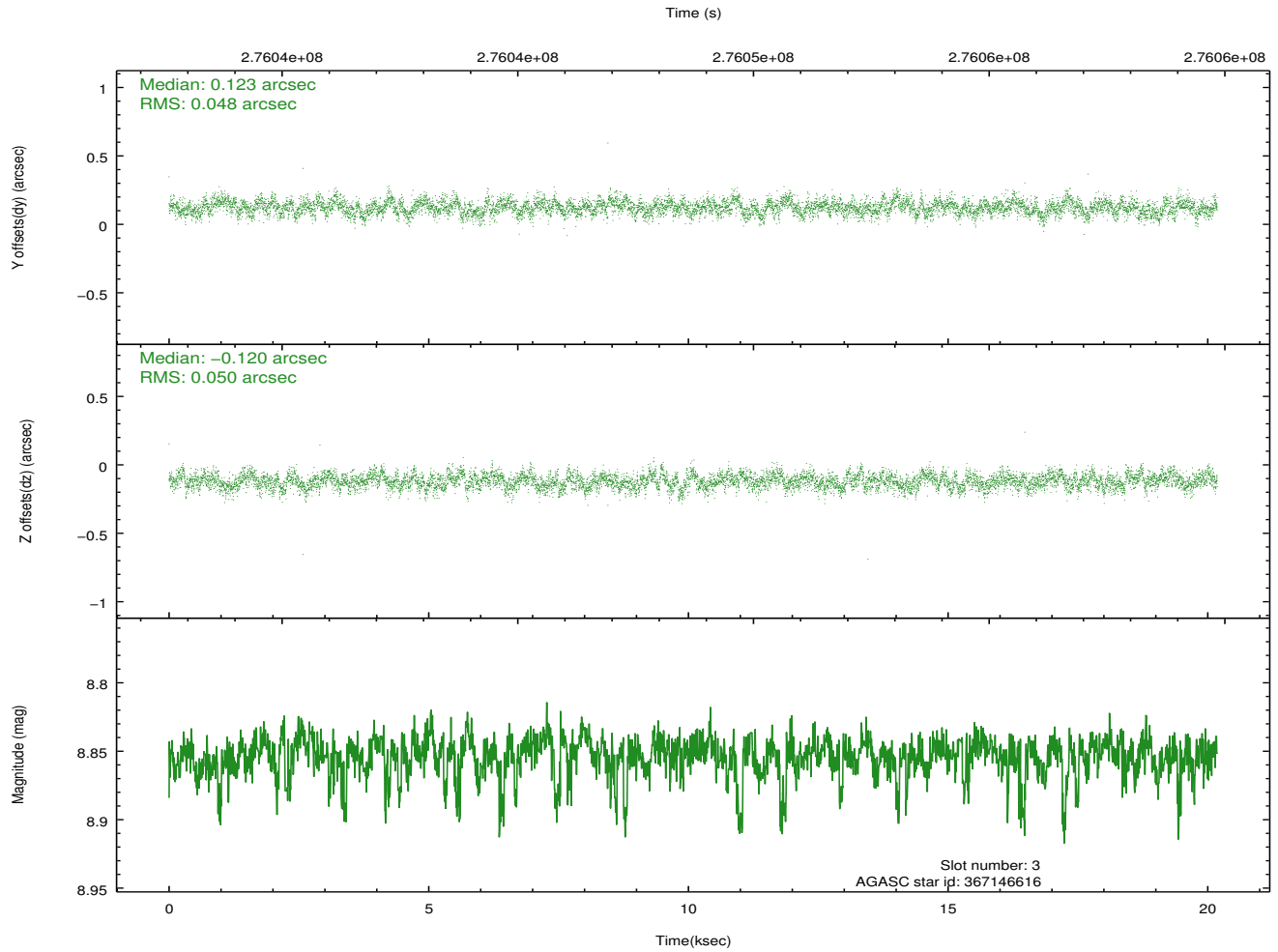
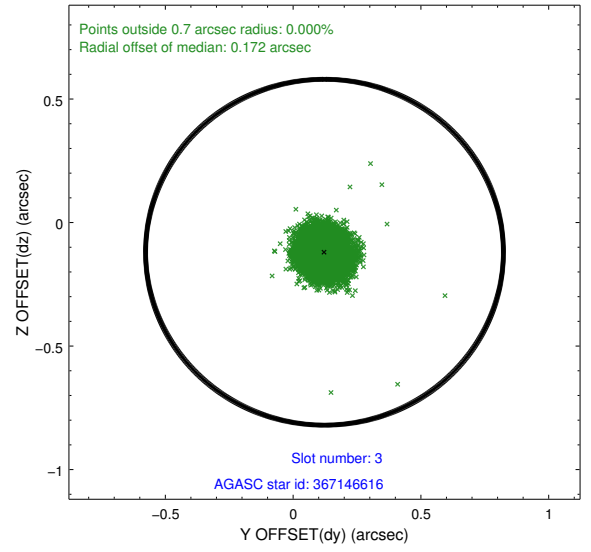
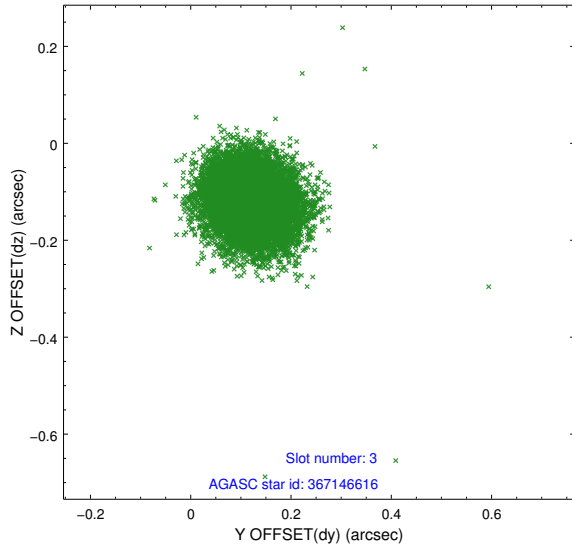


### Slot Statistics

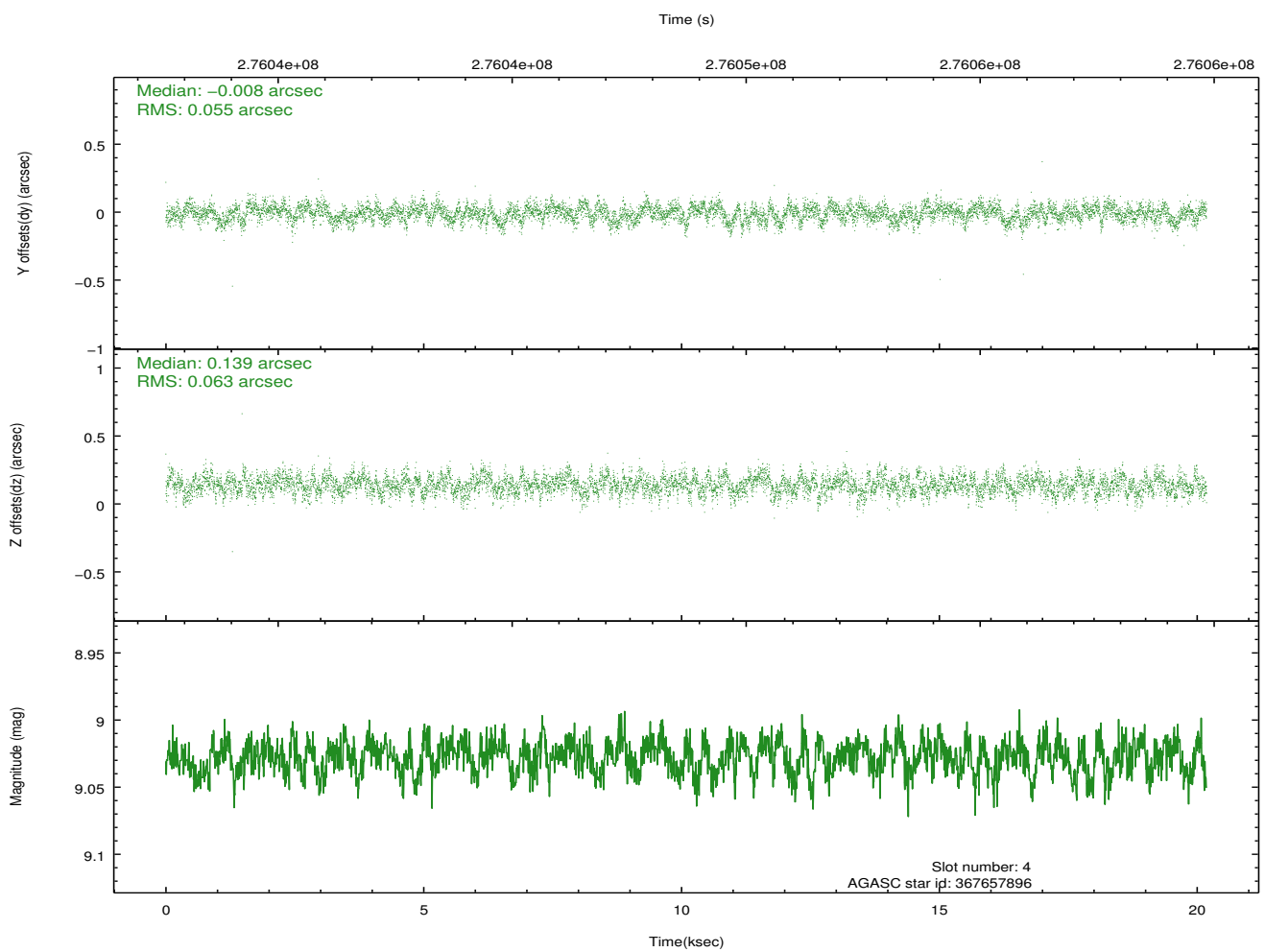
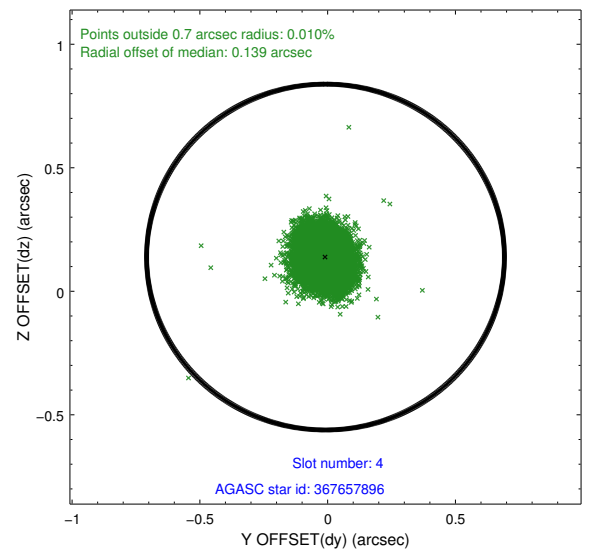
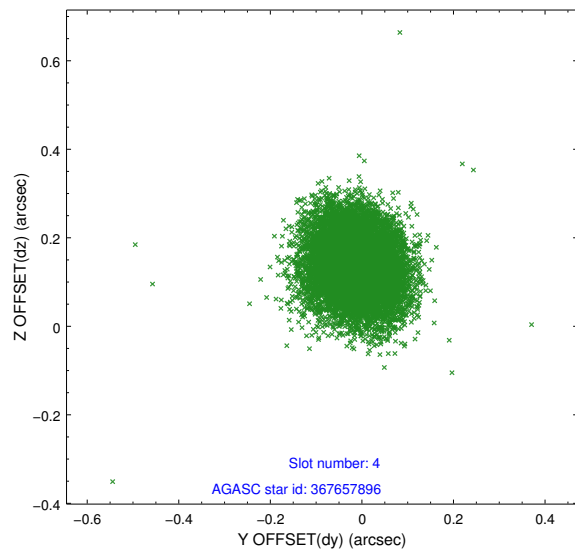
slot	status	id	mag	n_pts	med_dy	med_dz	dr1	dr2	ra	dec	mean_y	mean_z
0	FID	HRC-I-1	7.00	4924	0.020	0.017	0.006	0.011	0.000000	0.000000	-763.37	-1296.83
1	FID	HRC-I-3	7.09	4924	-0.058	-0.084	0.007	0.012	0.000000	0.000000	-1192.00	1007.38
2	FID	HRC-I-4	7.02	4924	0.153	-0.022	0.005	0.010	0.000000	0.000000	1279.40	1005.42
3	GUIDE	367146616	8.85	9787	0.123	-0.120	0.073	0.117	11.418645	41.190163	-1936.97	118.90
4	GUIDE	367657896	9.03	9843	-0.008	0.139	0.088	0.142	11.197765	41.313576	-1292.63	-254.01
5	GUIDE	367663272	9.29	9839	-0.148	0.003	0.096	0.162	10.656279	41.699429	311.30	-1474.31
6	GUIDE	367138920	7.73	9846	0.002	-0.080	0.074	0.121	11.513485	40.808909	-2352.70	1452.58
7	GUIDE	367674552	8.85	9839	0.036	0.061	0.082	0.136	11.016238	41.570845	-702.34	-1119.50

## 2.4 Star Slots

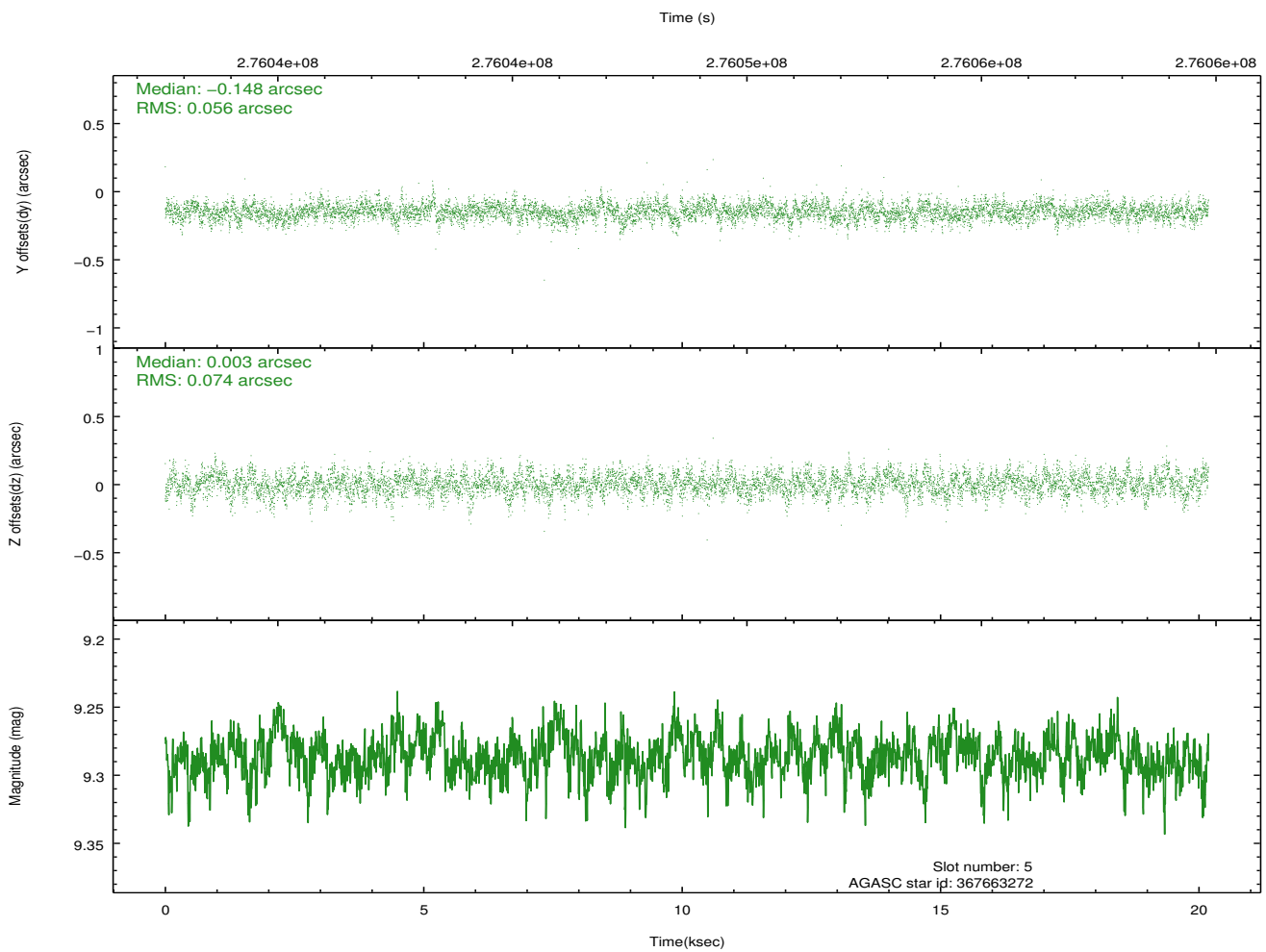
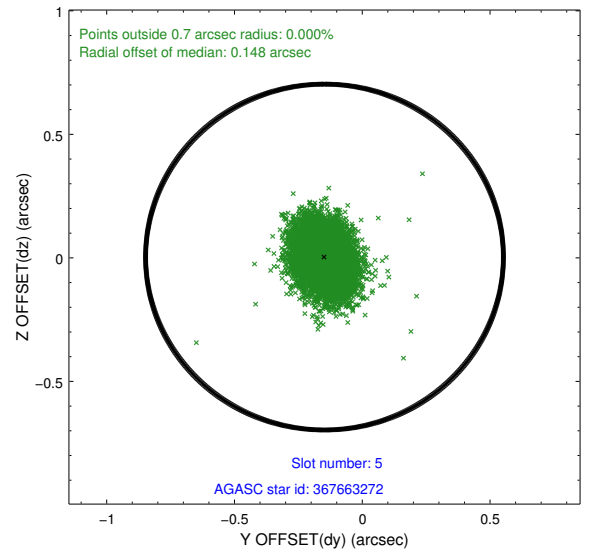
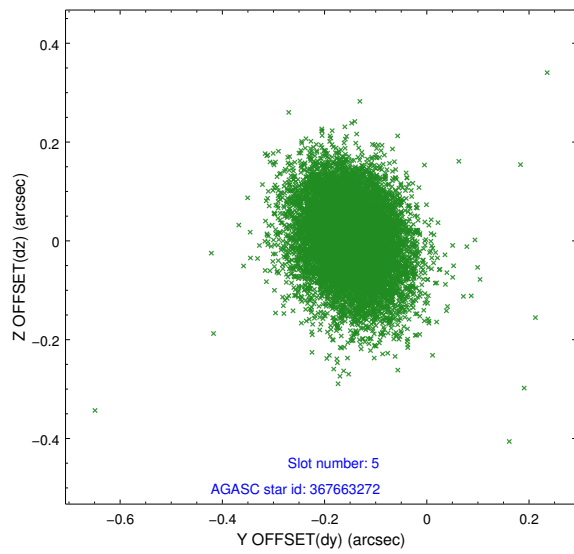
### 2.4.1 Slot 3



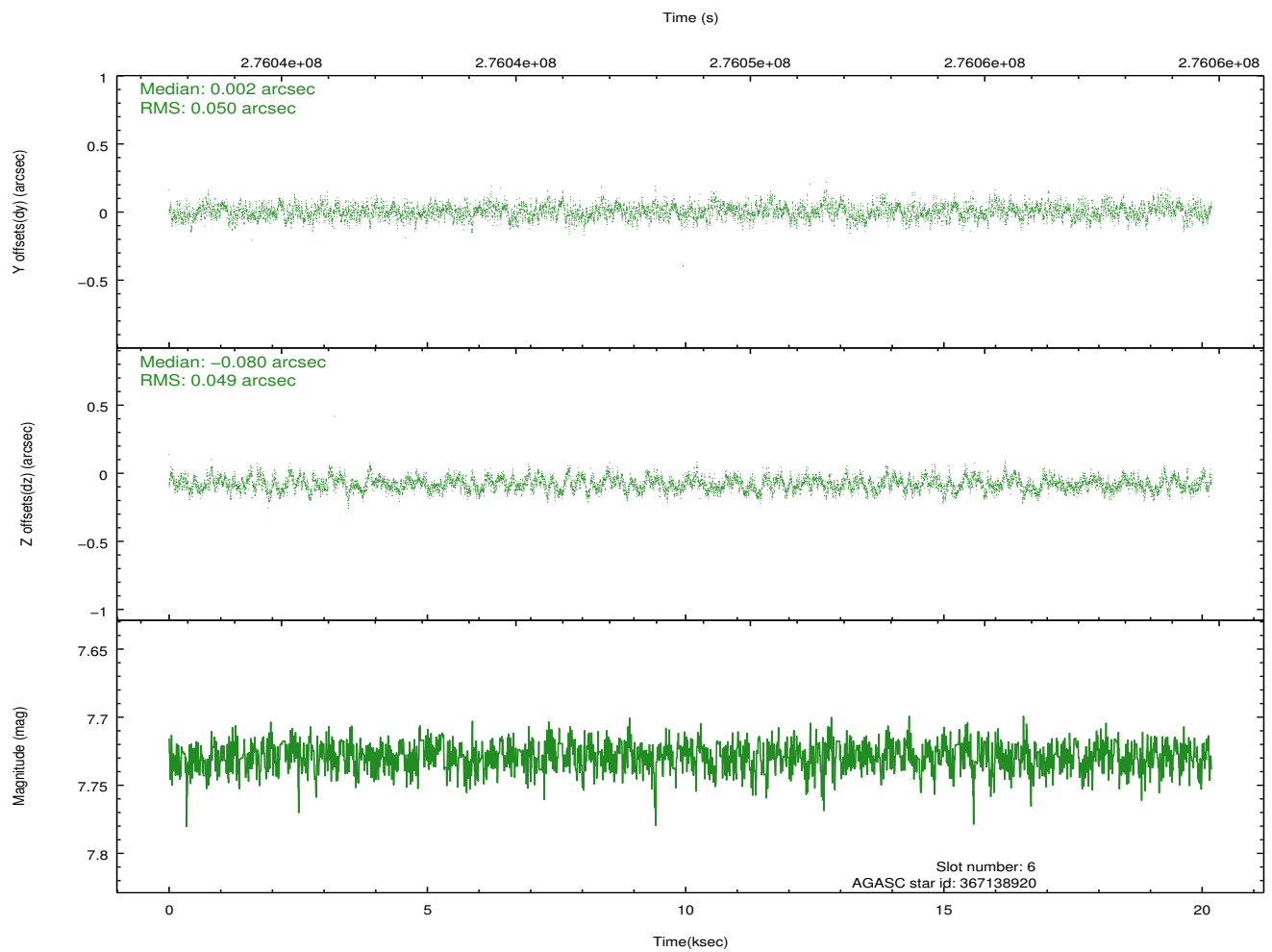
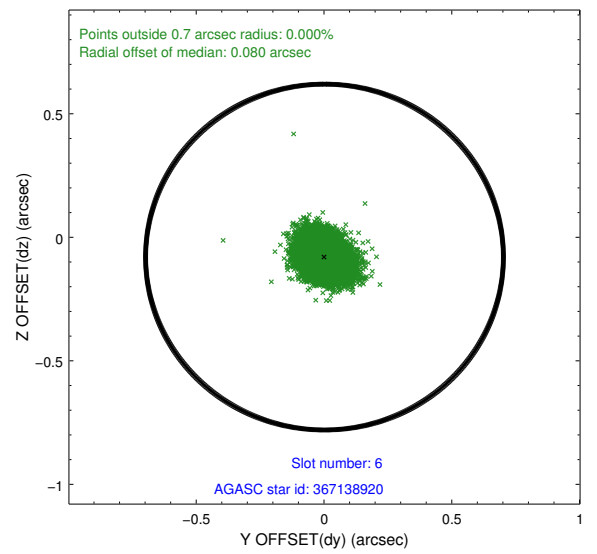
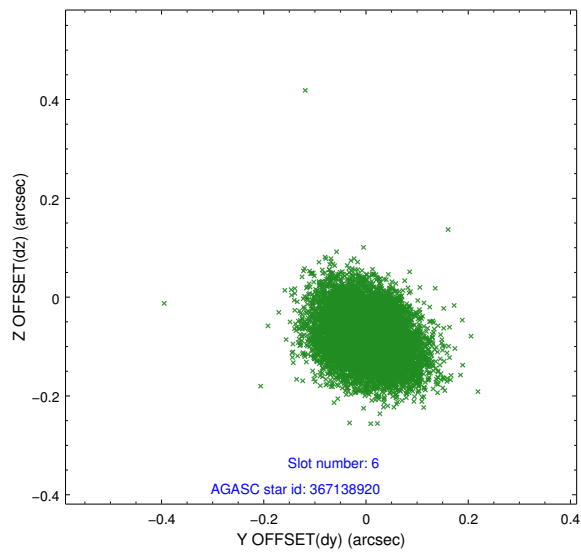
## 2.4.2 Slot 4



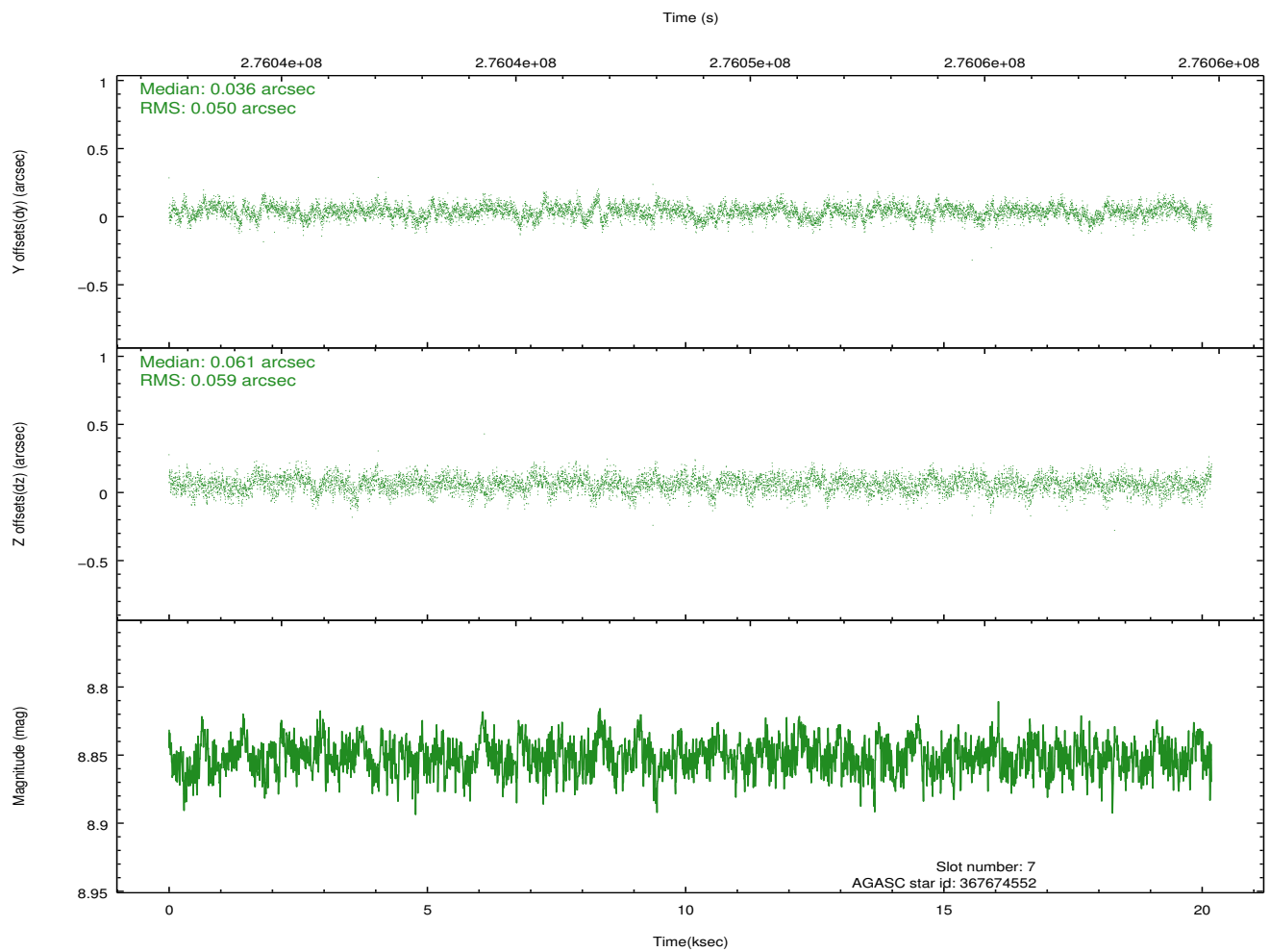
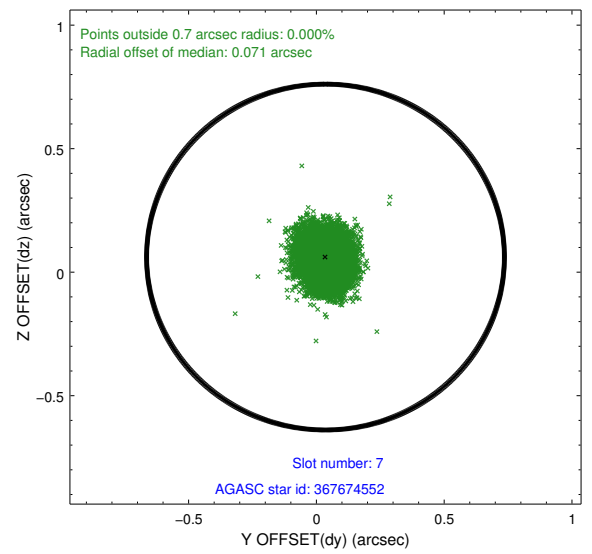
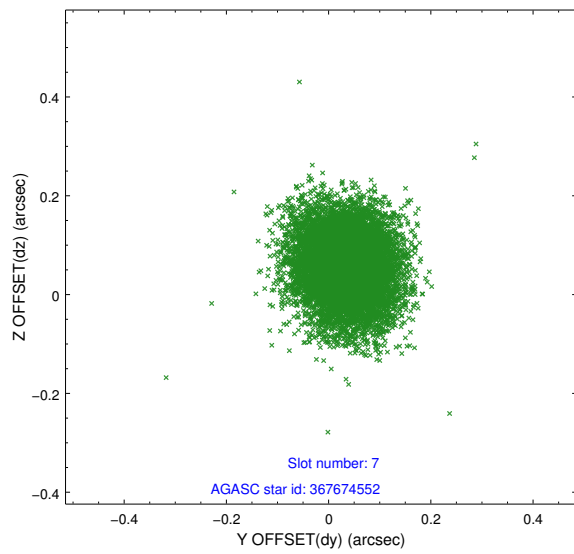
### 2.4.3 Slot 5



## 2.4.4 Slot 6

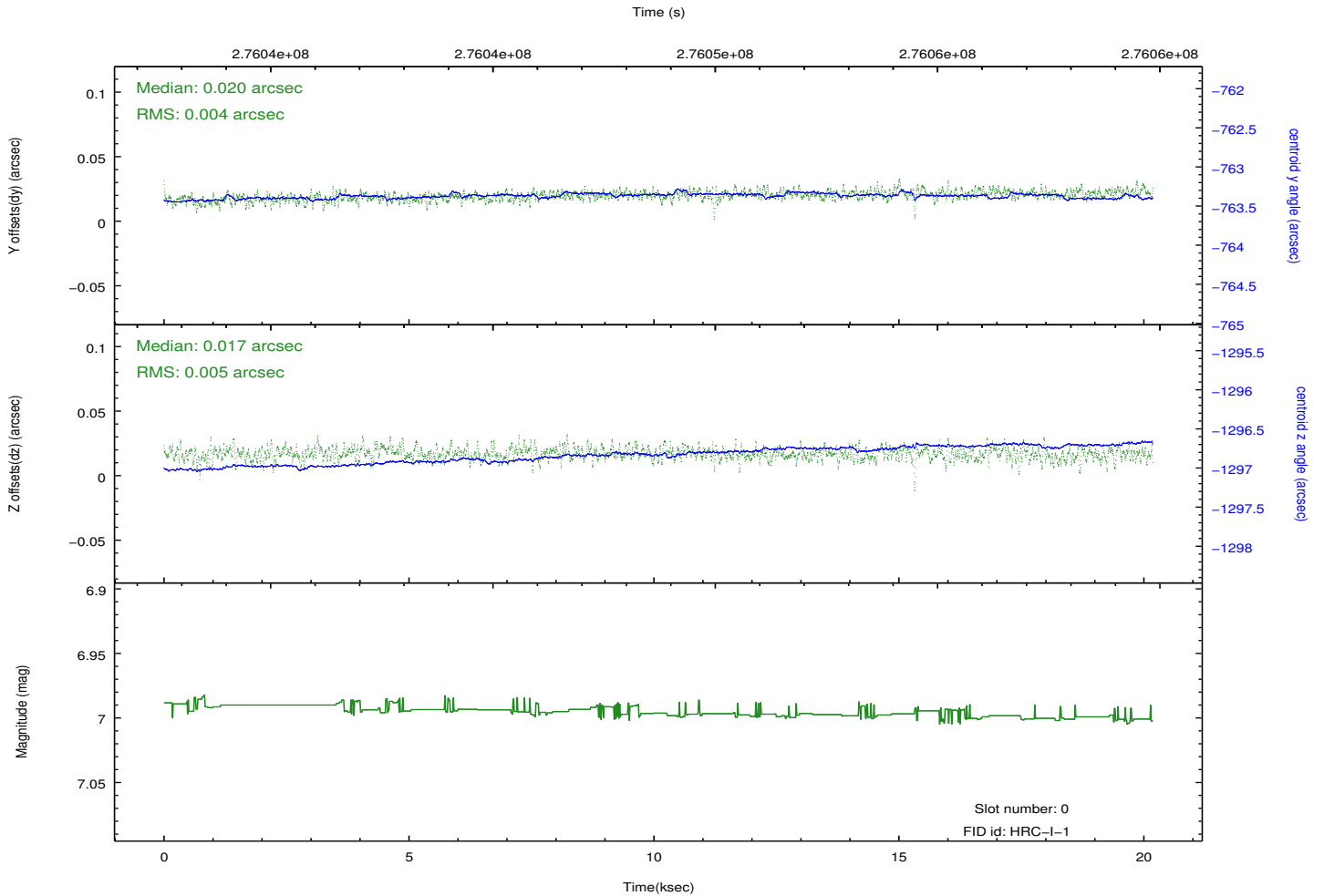
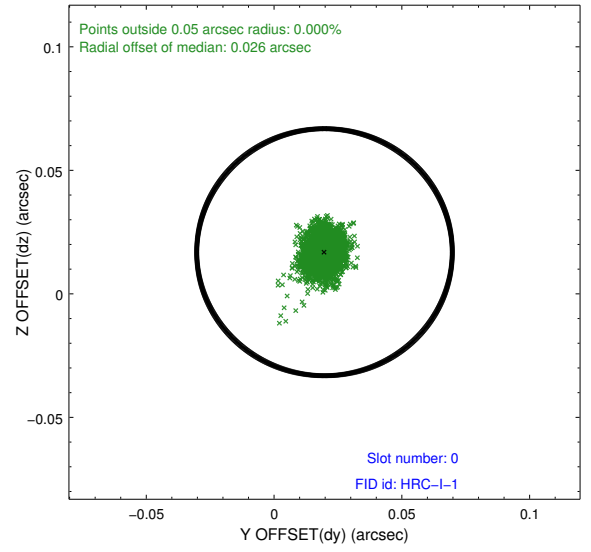
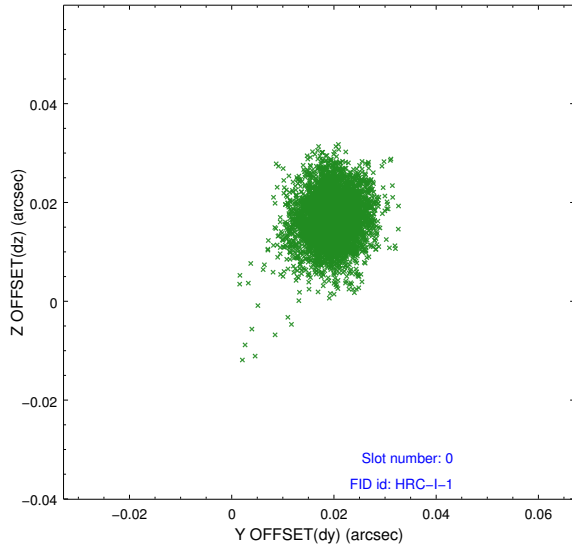


## 2.4.5 Slot 7

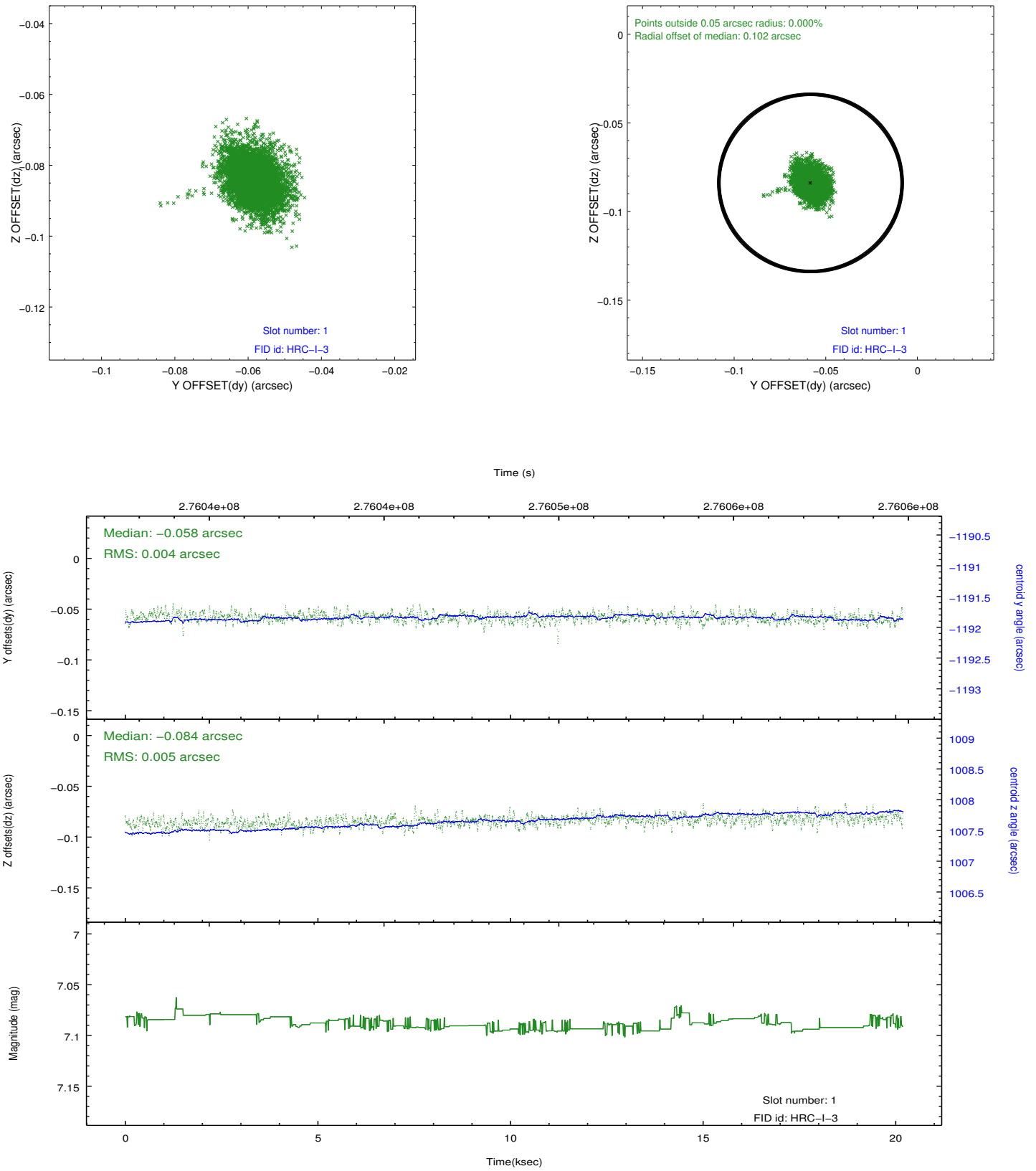


## 2.5 FID Slots

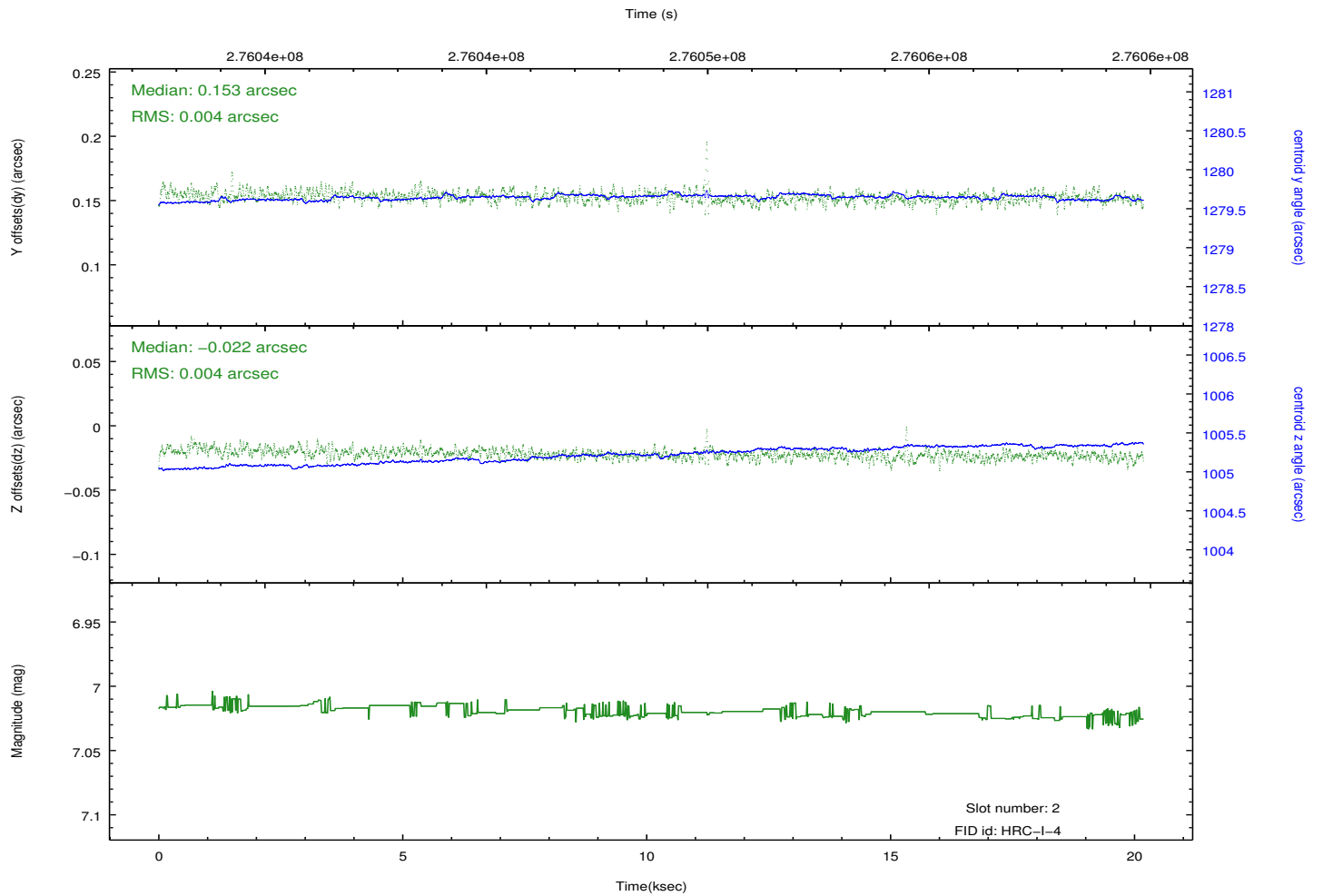
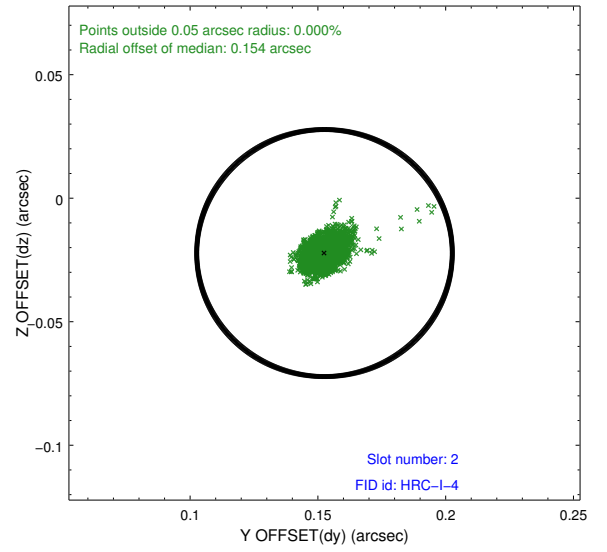
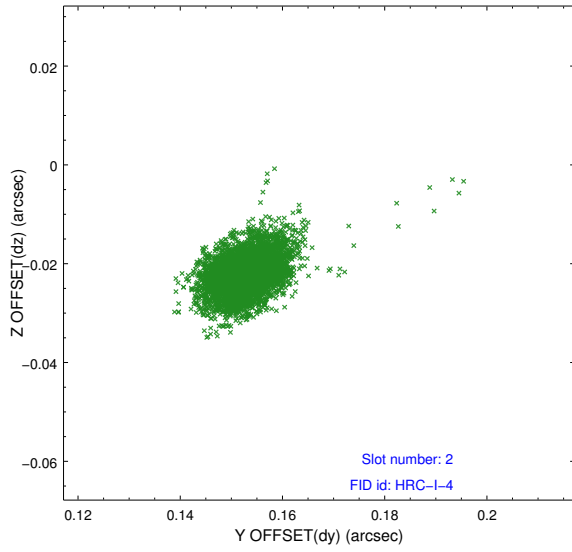
### 2.5.1 Slot 0



## 2.5.2 Slot 1



### 2.5.3 Slot 2



# A Summary

## A.1 Status

V&V Scientist	Jen Lauer
V&V Date (YYYY-MM-DD)	2012.08.14
V&V Edition	1
V&V Disposition and Status	OK
V&V Charge Time	20.1855822

## A.2 Comments

Joint proposal with XMM. Window preference met.