

V&V Reference Report

L2 ASCDS Version : 8.4.4

Observation 7564 - L2 Version 3
Chandra X-Ray Center

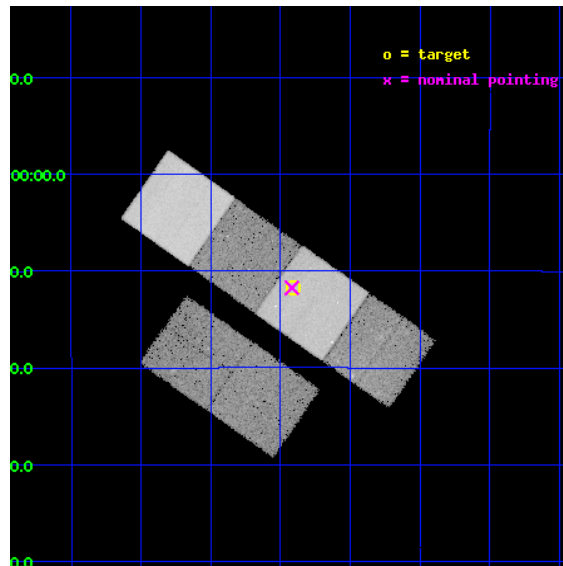
L2 Processing Date : Apr 19 2012

Contents

1	Front	2
2	OBI	3
2.1	OBI	3
2.1.1	Images	3
2.1.2	Bias	3
2.1.3	Parameters	4
2.1.4	Events	4
2.2	Compared Parameters	5
2.3	Aspect	6
2.4	Star Slots	9
2.4.1	Slot 3	9
2.4.2	Slot 4	10
2.4.3	Slot 5	11
2.4.4	Slot 6	12
2.4.5	Slot 7	13
2.5	FID Slots	14
2.5.1	Slot 0	14
2.5.2	Slot 1	15
2.5.3	Slot 2	16
A	Summary	17
A.1	Status	17
A.2	Comments	17

1 Front

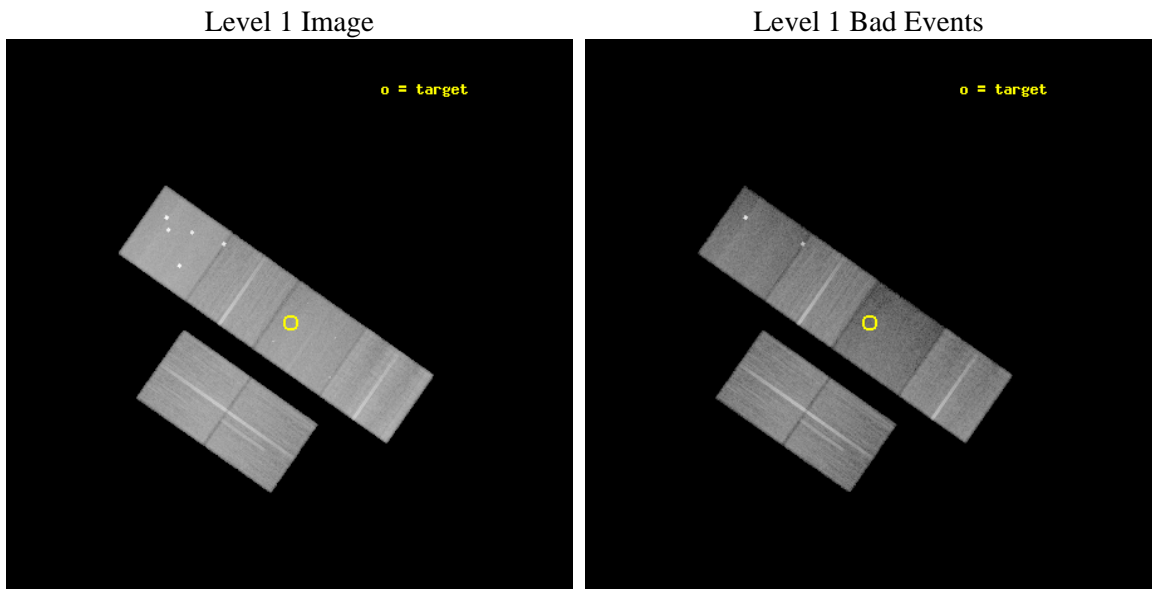
seq_num	500696	Sequence number
obs_id	7564	Observation id
title	A Search for Jet Breaks in Long GRB afterglows	Proposal title
observer	Professor Gordon Garmire	Principal investigator
object	GRB 061121	Source name
dtcycle	0	
cycle	P	events from which exps? Prim/Second/Both
ra_targ	147.2275	Observer's specified target RA [deg]
dec_targ	-13.195111	Observer's specified target Dec [deg]
ra_nom	147.22958224802	Nominal RA [deg]
dec_nom	-13.195657256788	Nominal Dec [deg]
roll_nom	34.965748520724	Nominal Roll [deg]
revision	3	Processing version of data
ontime	33062.399876893	Sum of GTIs [s]
liveltime	32643.743861864	Livetime [s]
ontime2	33055.917856336	Sum of GTIs [s]
ontime3	33062.399876893	Sum of GTIs [s]
ontime5	33062.399876893	Sum of GTIs [s]
ontime6	33059.15885663	Sum of GTIs [s]
ontime7	33062.399876893	Sum of GTIs [s]
ontime8	33052.676816344	Sum of GTIs [s]
l2events	333610	Number of level 2 events



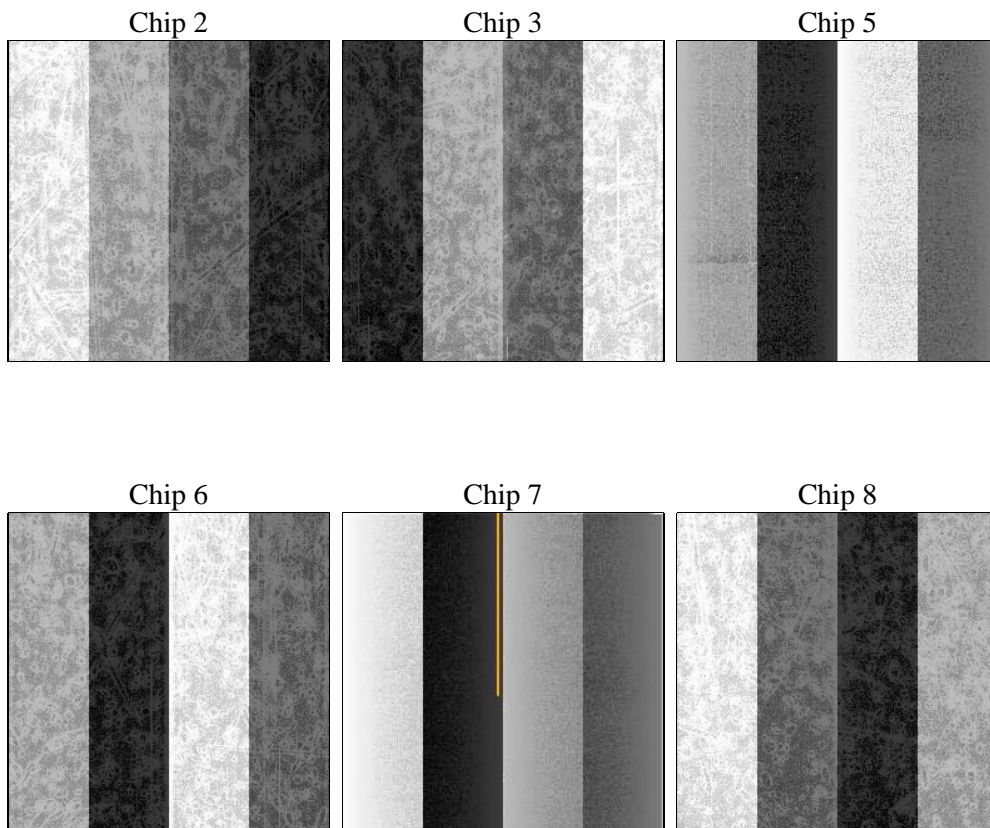
2 OBI

2.1 OBI

2.1.1 Images



2.1.2 Bias



2.1.3 Parameters

obi_num	0	Obi number	sched_exp_time	33000.000000	[s] Scheduled observation exposure time
ascdsver	8.4.4	Processing system revision	ontime	33062.399876893	Sum of GTIs [s]
caldbver	4.4.9	 	ontime2	33055.917856336	Sum of GTIs [s]
date	2012-04-19T02:45:10	Date and time of file creation	ontime3	33062.399876893	Sum of GTIs [s]
revision	3	Processing version of data	ontime5	33062.399876893	Sum of GTIs [s]
			ontime6	33059.15885663	Sum of GTIs [s]
			ontime7	33062.399876893	Sum of GTIs [s]
			ontime8	33052.676816344	Sum of GTIs [s]
			l1events	1580313	Number of level 1 events

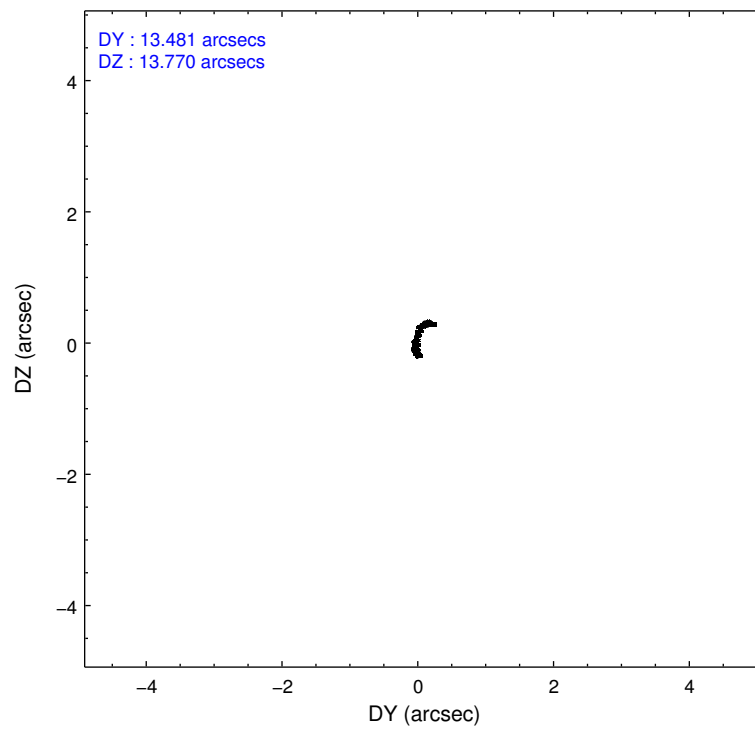
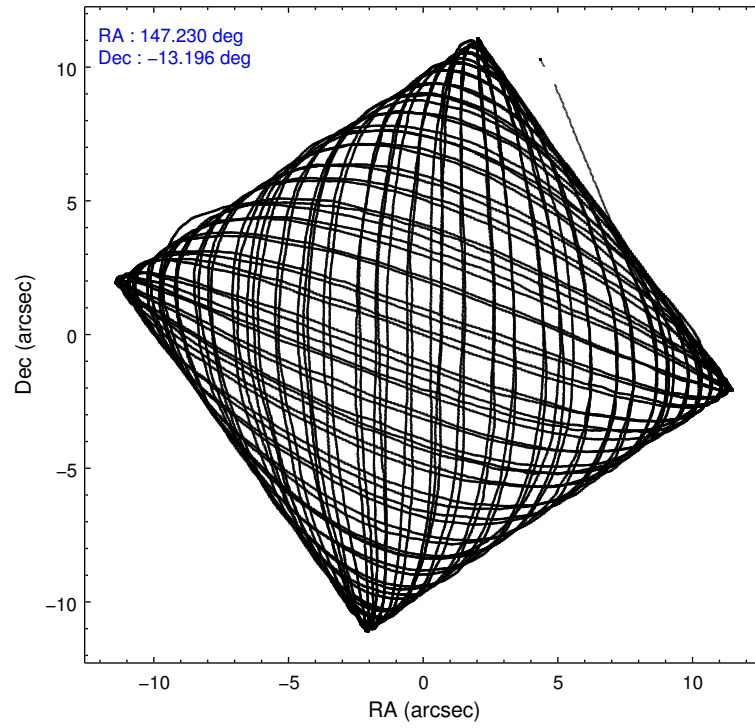
2.1.4 Events

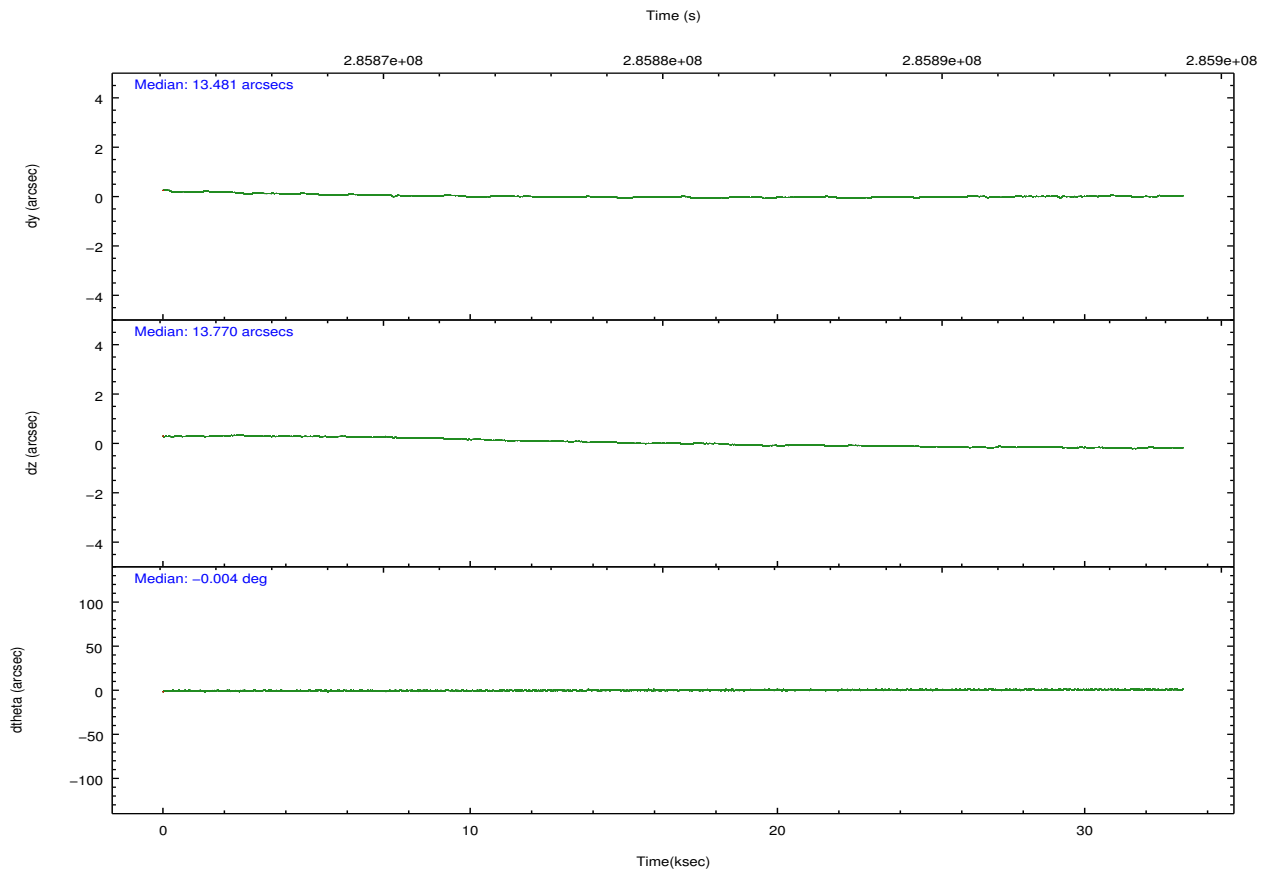
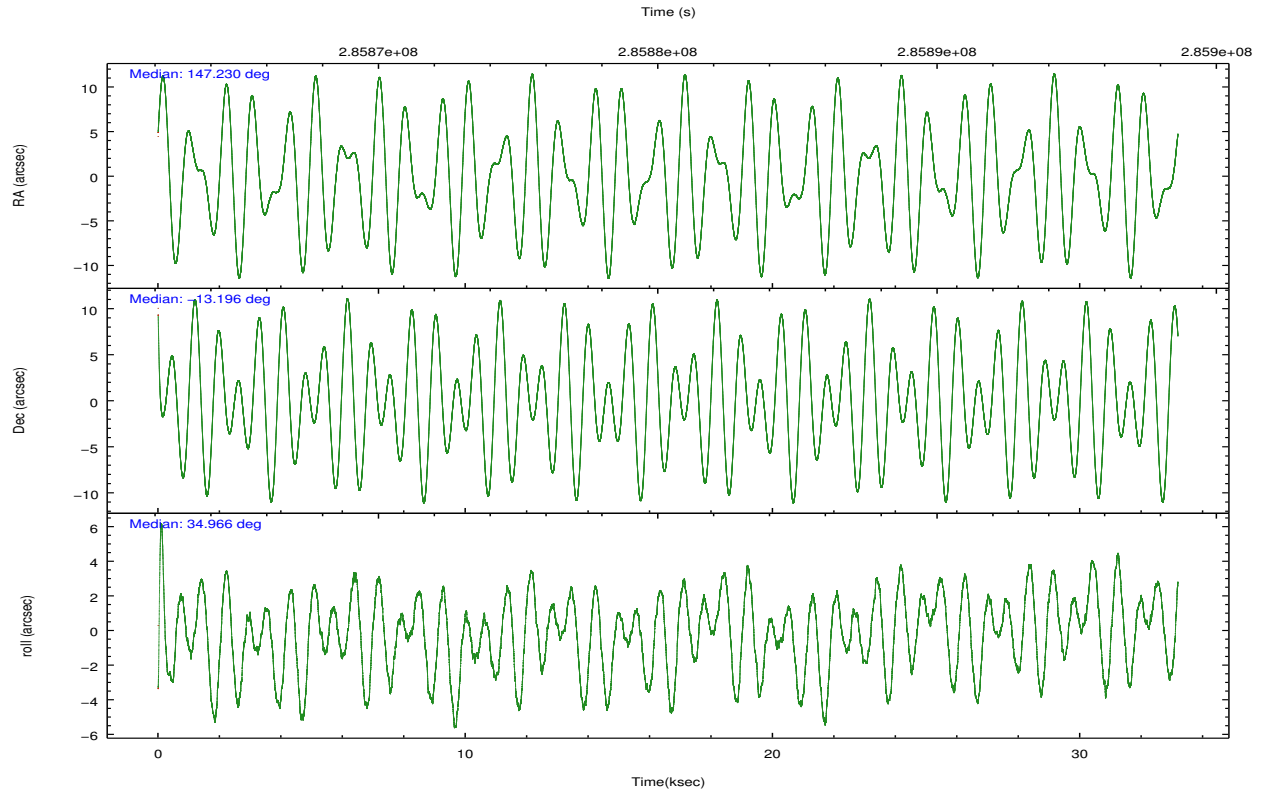
	ccd 2	ccd 3	ccd 5	ccd 6	ccd 7	ccd 8		ccd 2	ccd 3	ccd 5	ccd 6	ccd 7	ccd 8
level 1 events	263251	231348	328072	240531	225703	291408	grade 0 events	8260	7540	38679	8529	11522	19362
rejected events	240769	210461	146783	216655	114196	220653		3%	3%	11%	3%	5%	6%
rejected %	91%	90%	44%	90%	50%	75%	grade 1 events	139	127	2236	108	320	216
								0%	0%	0%	0%	0%	0%
							grade 2 events	5415	4586	48902	5279	23378	16869
								2%	1%	14%	2%	10%	5%
							grade 3 events	2398	2462	7415	2665	10692	7809
								0%	1%	2%	1%	4%	2%
							grade 4 events	2475	2373	7220	2631	10528	7176
								0%	1%	2%	1%	4%	2%
							grade 5 events	6655	7858	26626	7896	24348	12307
								2%	3%	8%	3%	10%	4%
							grade 6 events	3943	3928	79089	4772	55394	19542
								1%	1%	24%	1%	24%	6%
							grade 7 events	233966	202474	117905	208651	89521	208127
								88%	87%	35%	86%	39%	71%

2.2 Compared Parameters

Parameter	Planned	Actual	Parameter	Planned	Actual
Instrument	ACIS	ACIS	Obspar format version number	7	7
Detector	ACIS-235678	ACIS-235678	Obspar file type	PREDICTED	ACTUAL
Grating	NONE	NONE	Obspar update status	NONE	UPDATED
Data mode	VFAINT	VFAINT	Number of optional ACIS chips dropped	0	0
Observation mode	POINTING	POINTING	On-chip summing requested	N	N
[deg] Pointing RA	147.218042	147.2295822480234	Subarray requested	NONE	NONE
[deg] Pointing Dec	-13.220599	-13.19565725678753	Alternating exposures requested	N	N
[deg] Pointing Roll	34.806487	34.96574852072376	[s] Primary exposure time	0.000000	3.2
[mm] SIM focus pos	-0.684267	-0.6828225247311905			
[mm] SIM defocus	0	0.001444936568705701			
[mm] SIM translation stage pos	-190.132523	-190.1400660498719			
[mm] SIM translation stage offset	0	0.00754346686406393			
[s] Observation start time (MET)	285863974.184000	285862957.01852			
Observation start date	2007-01-22T14:38:29	2007-01-22T14:22:37			
[s] Observation end time (MET)	285896974.184000	285898350.2702			
Observation end date	2007-01-22T23:48:29	2007-01-23T00:12:30			
Read mode	TIMED	TIMED			

2.3 Aspect



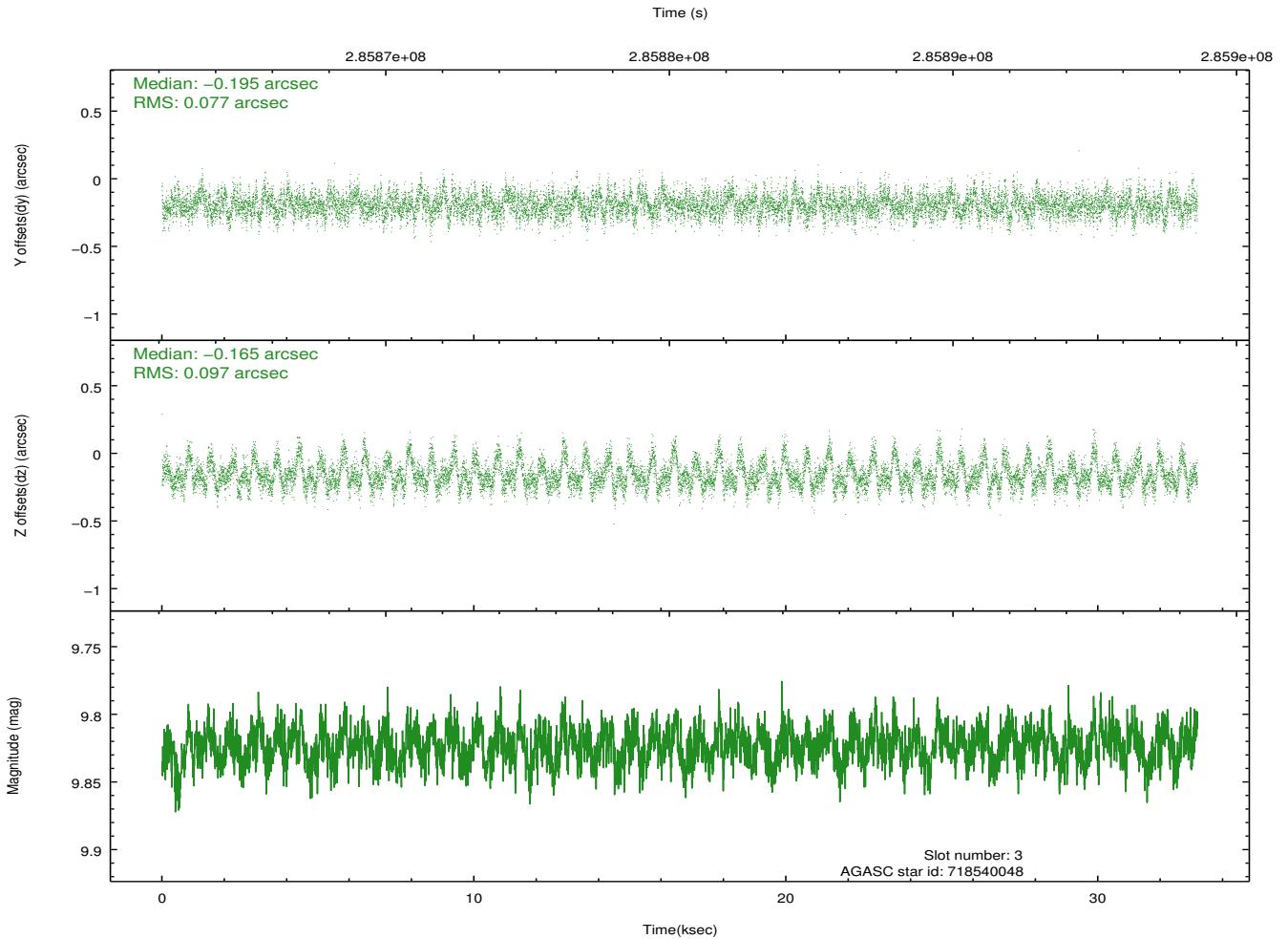
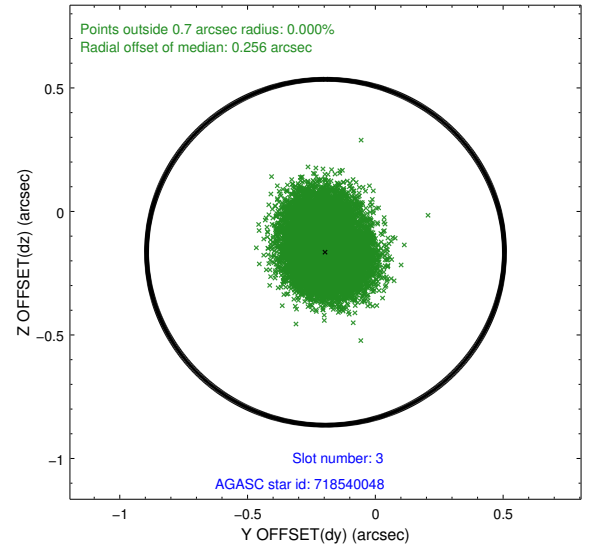
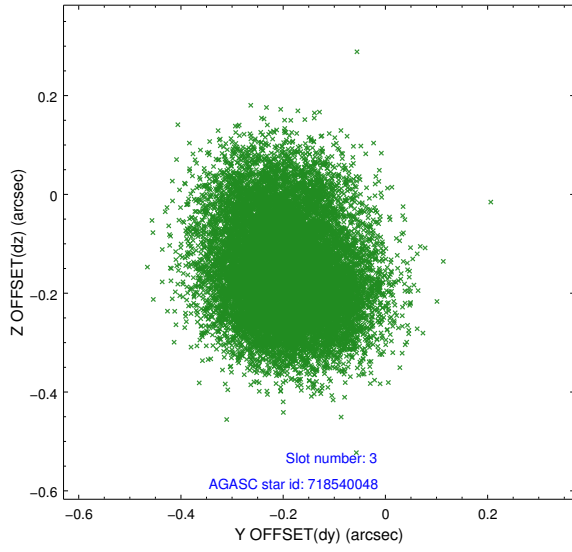


Slot Statistics

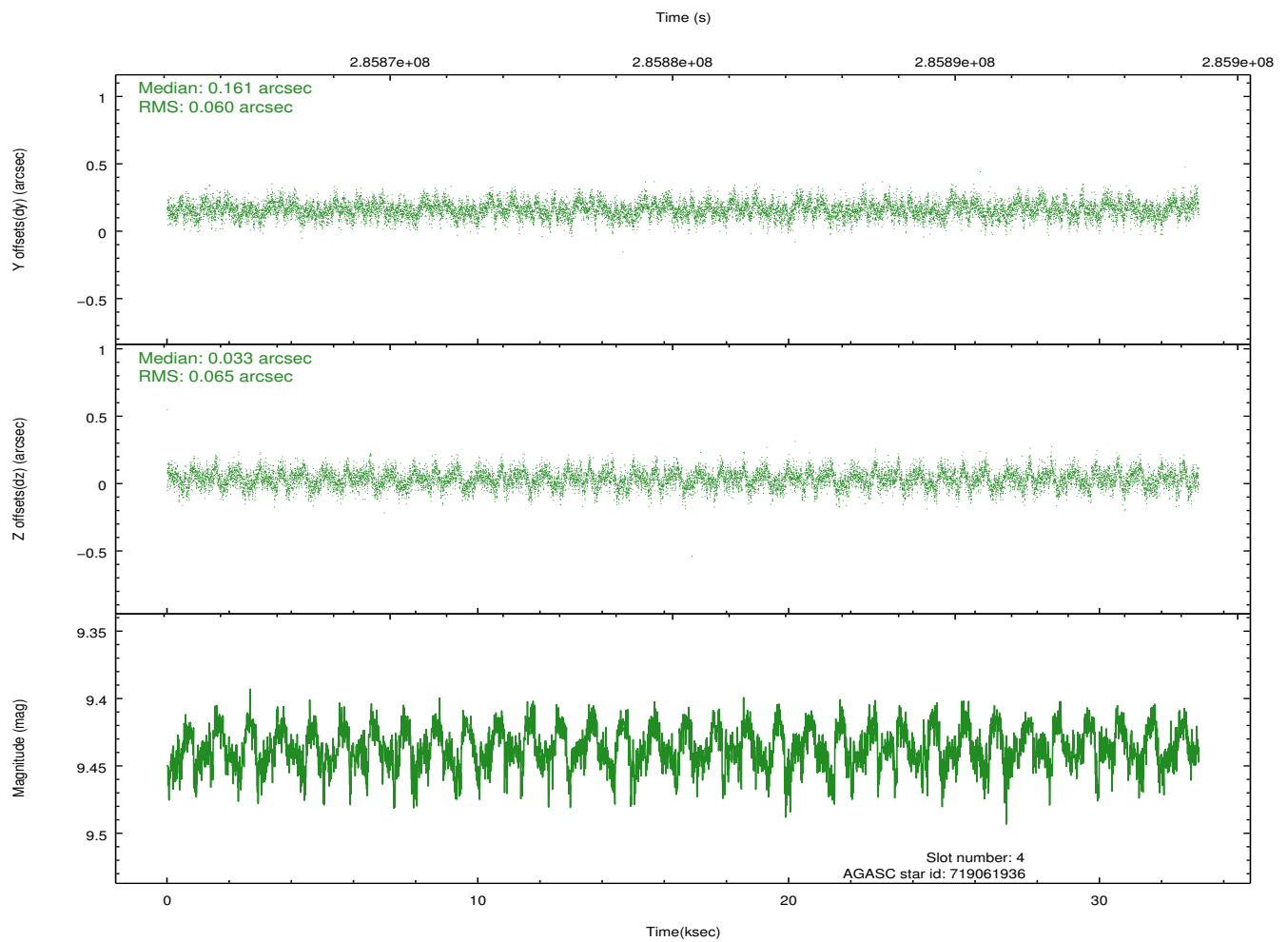
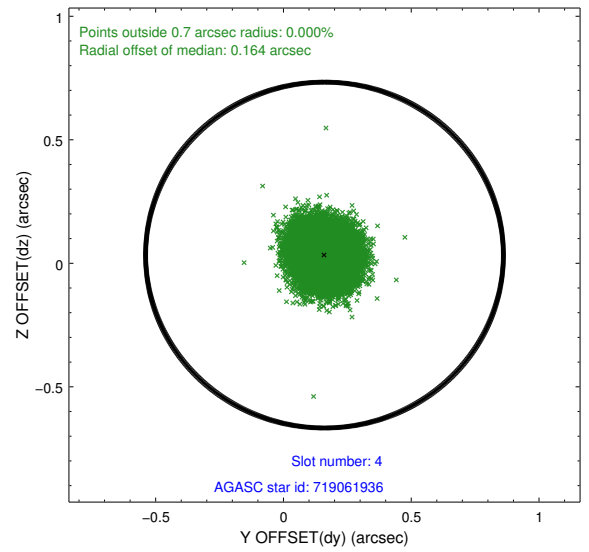
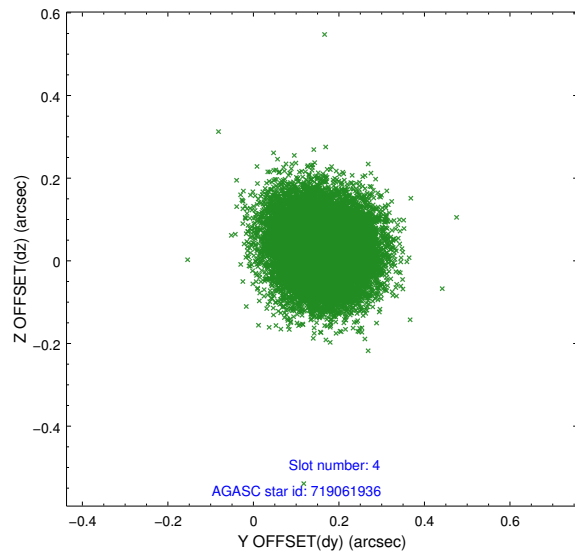
slot	status	id	mag	n_pts	med_dy	med_dz	dr1	dr2	ra	dec	mean_y	mean_z
0	FID	ACIS-S-2	7.10	8094	-0.043	-0.070	0.010	0.018	0.000000	0.000000	-766.48	-1735.22
1	FID	ACIS-S-4	7.20	8096	0.193	0.040	0.011	0.024	0.000000	0.000000	2147.02	173.32
2	FID	ACIS-S-5	7.23	8096	-0.182	0.039	0.009	0.014	0.000000	0.000000	-1819.39	167.05
3	GUIDE	718540048	9.82	16170	-0.195	-0.165	0.132	0.215	147.357909	-12.666589	1541.87	1357.23
4	GUIDE	719061936	9.44	16167	0.161	0.033	0.095	0.153	146.907752	-13.519256	-1505.16	-263.32
5	GUIDE	719065648	9.39	16174	0.016	-0.174	0.123	0.195	147.110798	-13.170696	-205.86	361.97
6	GUIDE	719066064	9.73	16175	0.176	0.104	0.130	0.205	147.088595	-13.515708	-977.98	-613.52
7	GUIDE	719198032	9.86	16170	-0.174	0.211	0.264	0.411	147.716784	-13.416493	1030.66	-1577.10

2.4 Star Slots

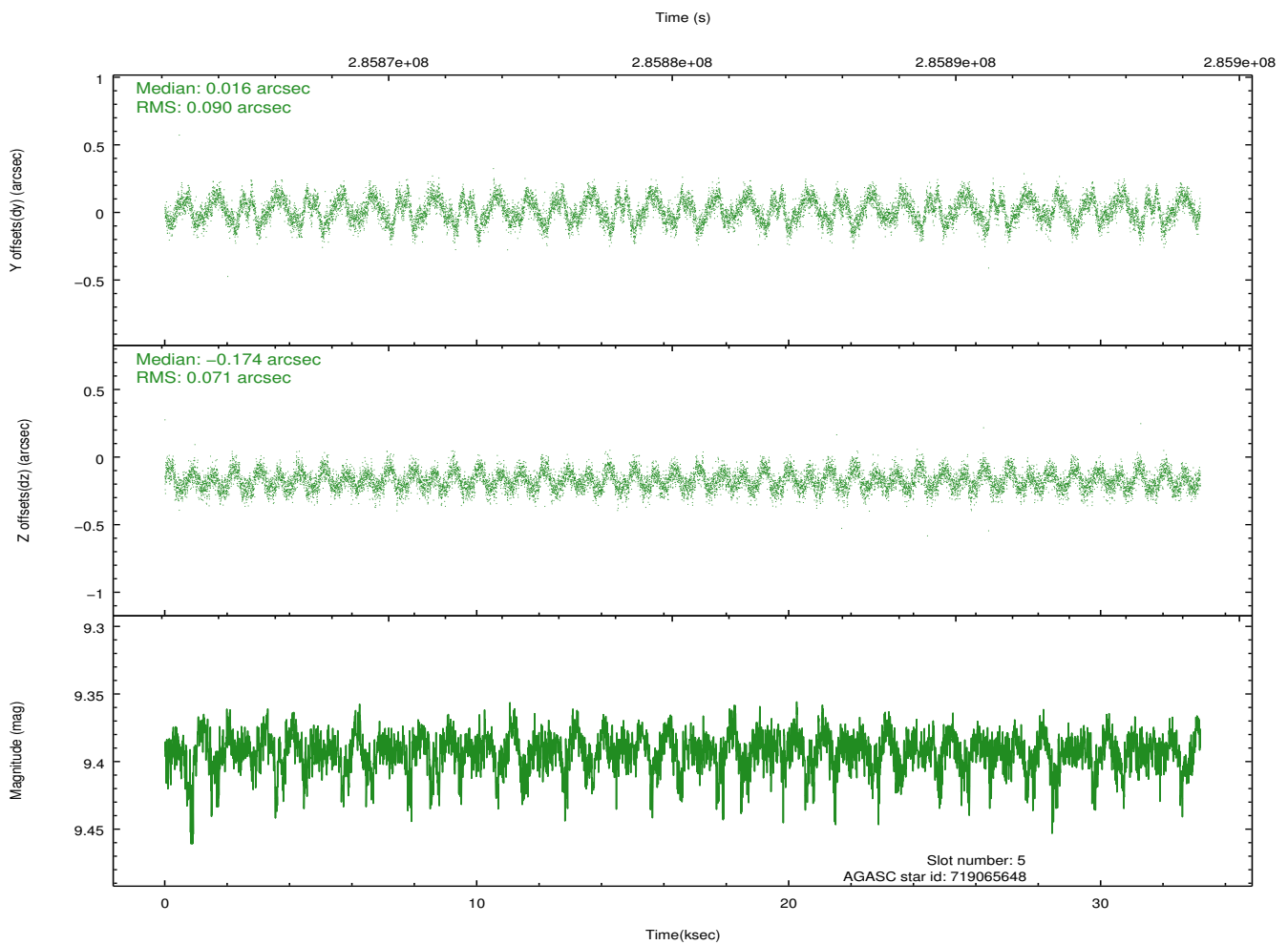
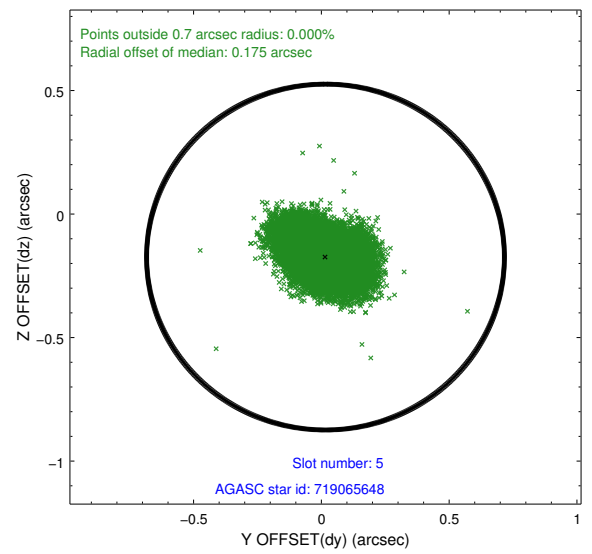
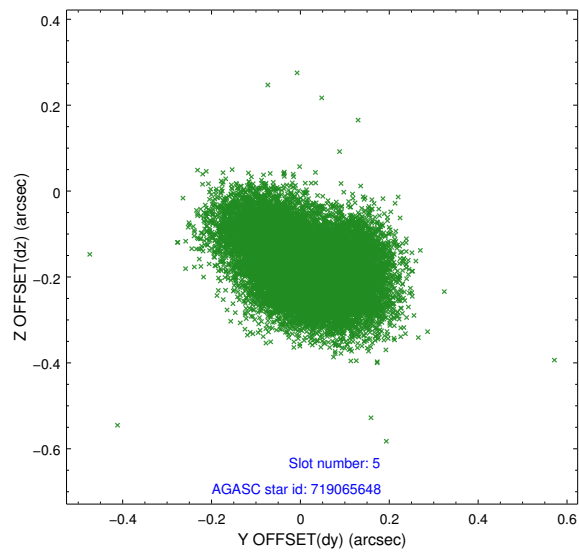
2.4.1 Slot 3



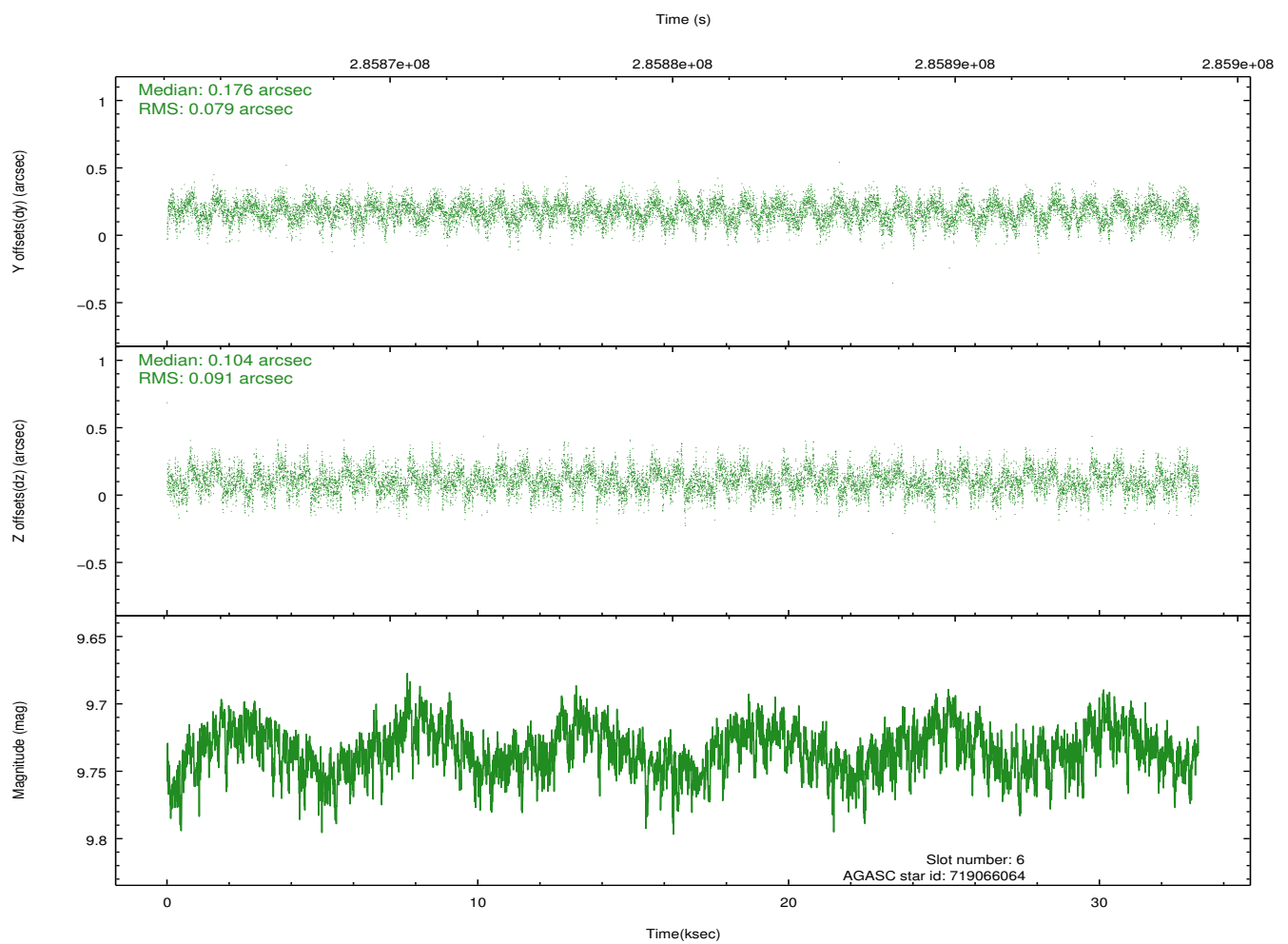
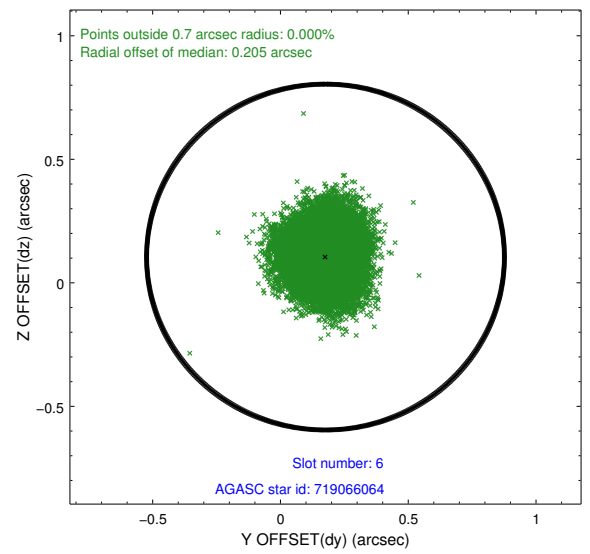
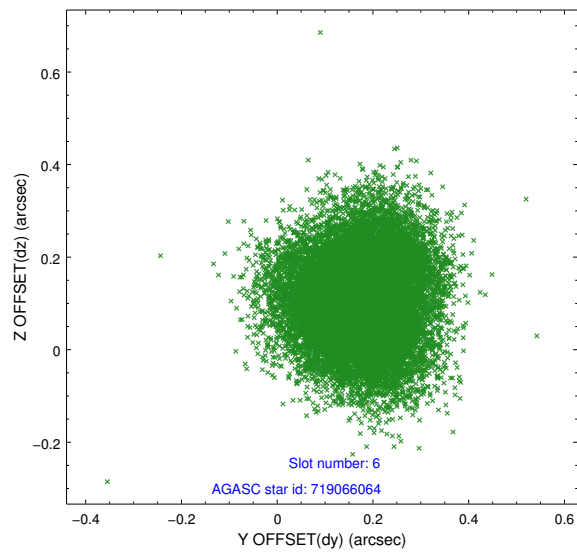
2.4.2 Slot 4



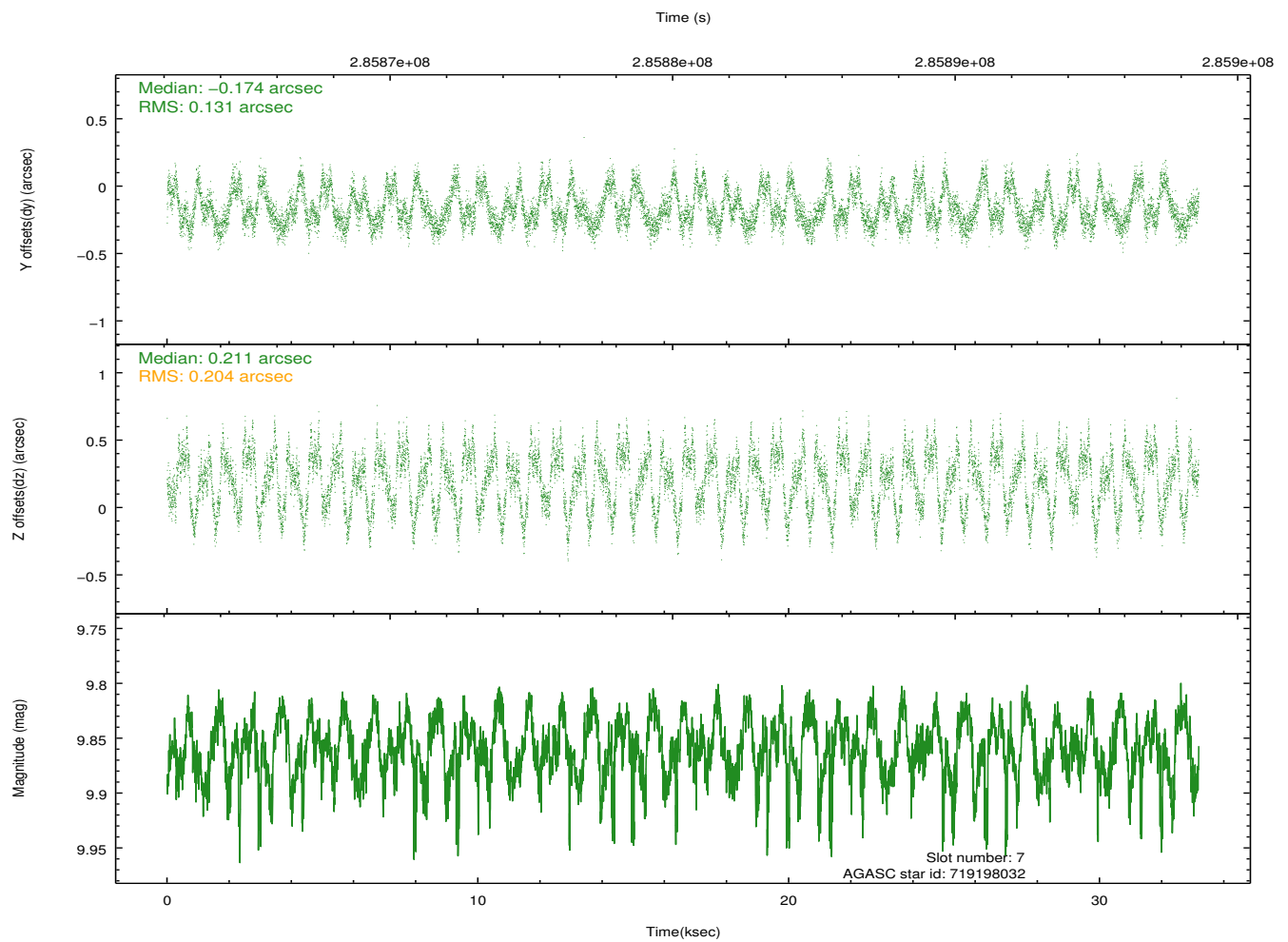
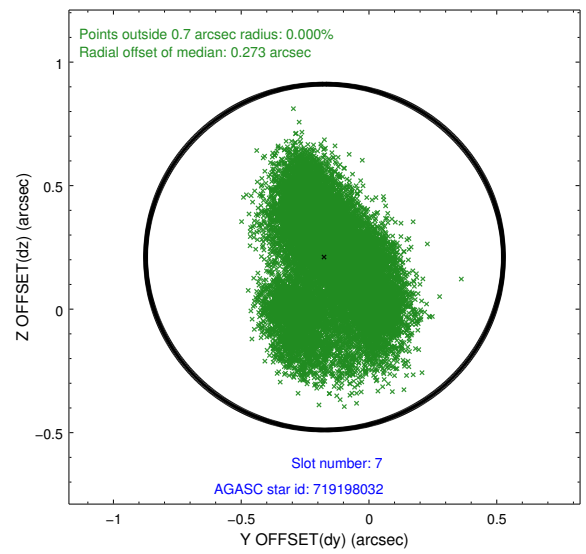
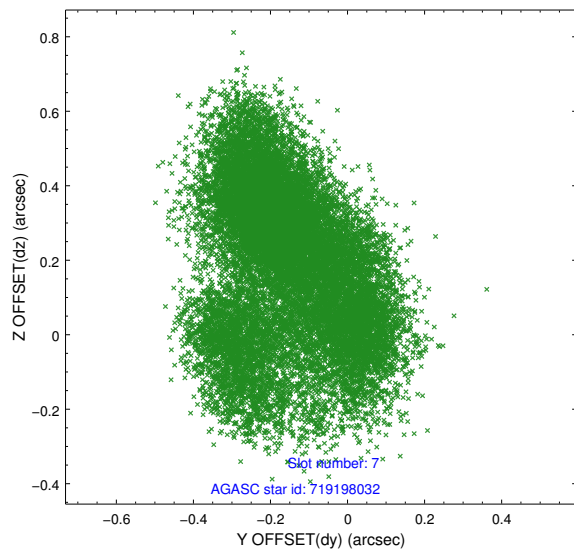
2.4.3 Slot 5



2.4.4 Slot 6

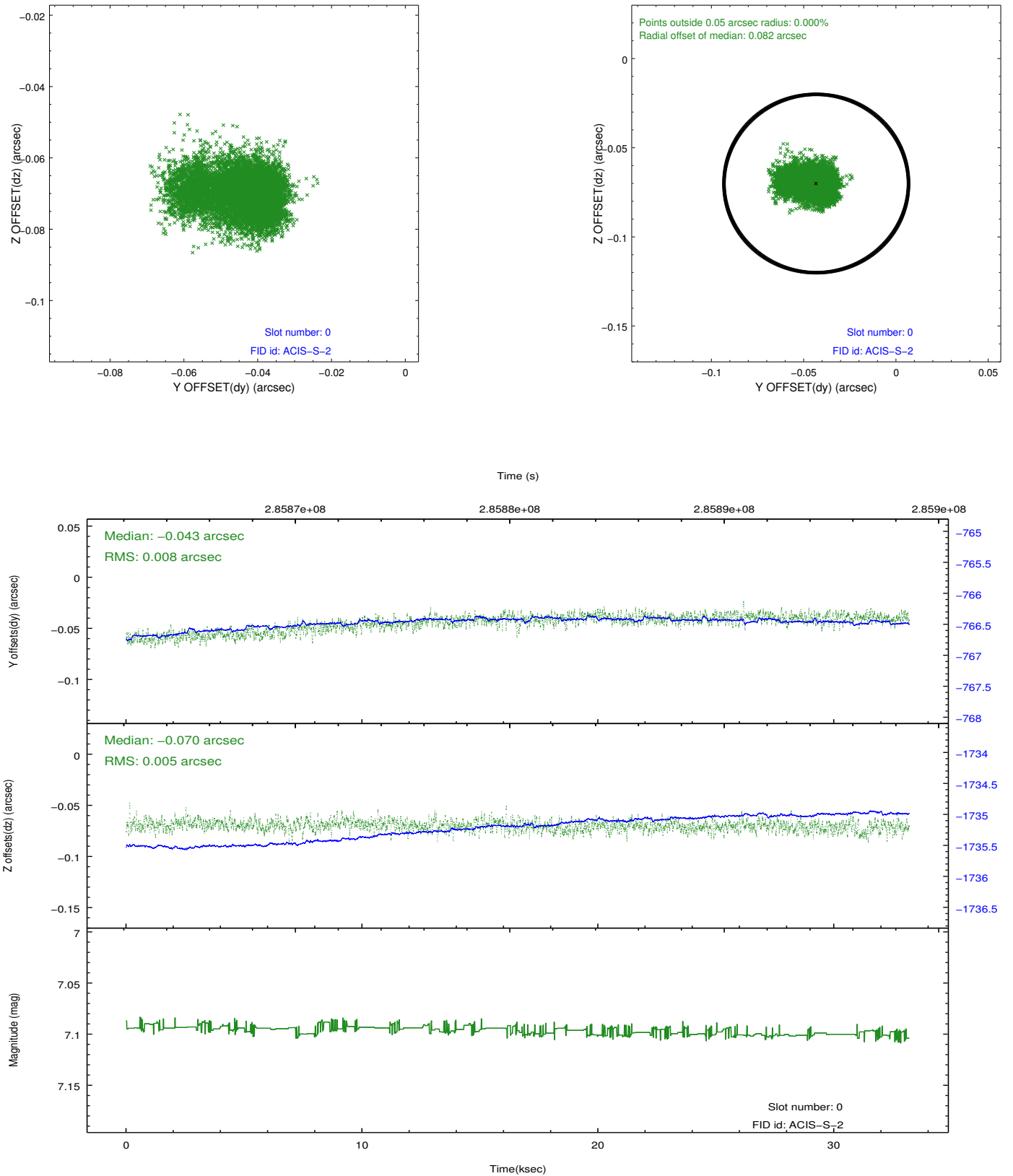


2.4.5 Slot 7

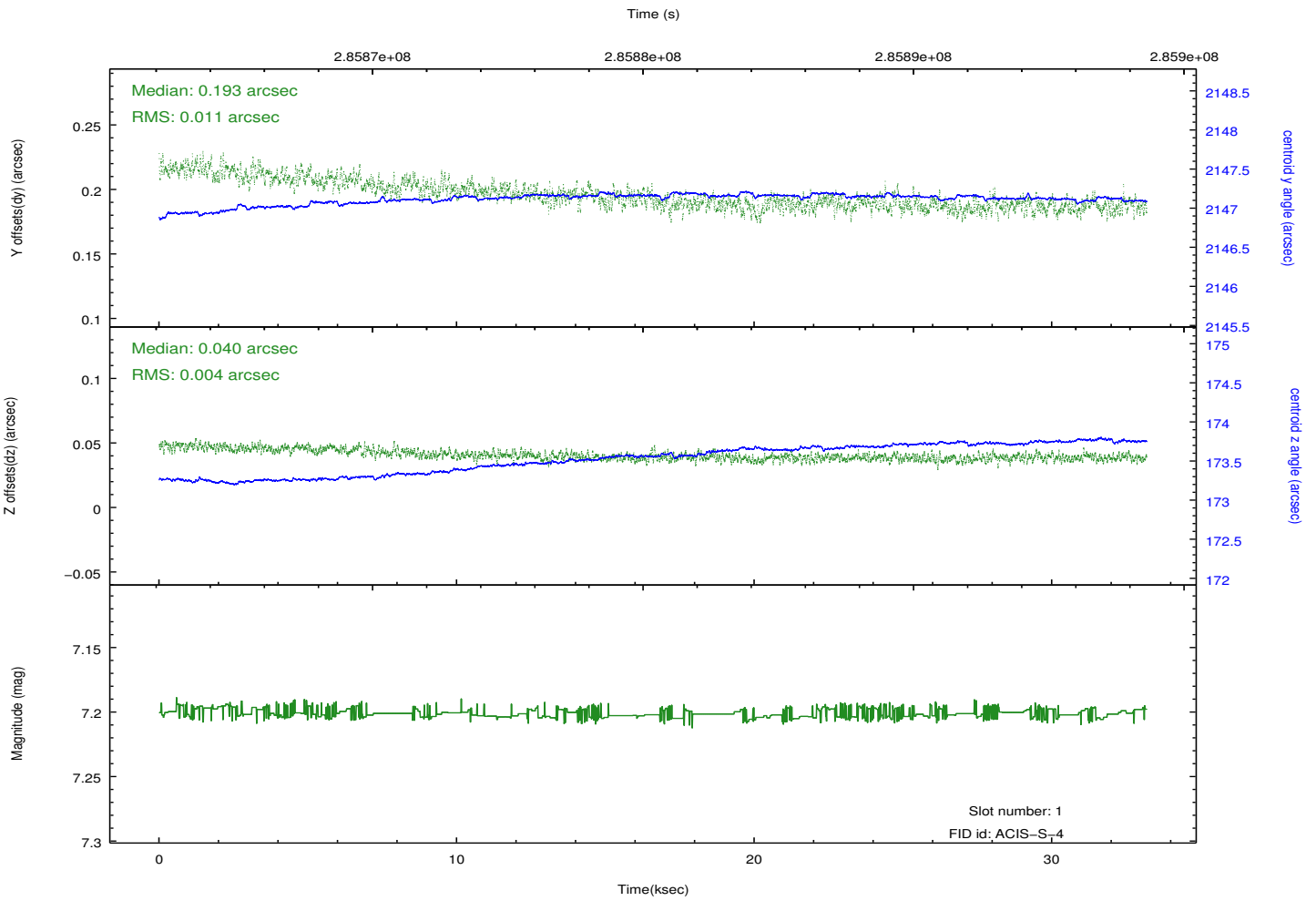
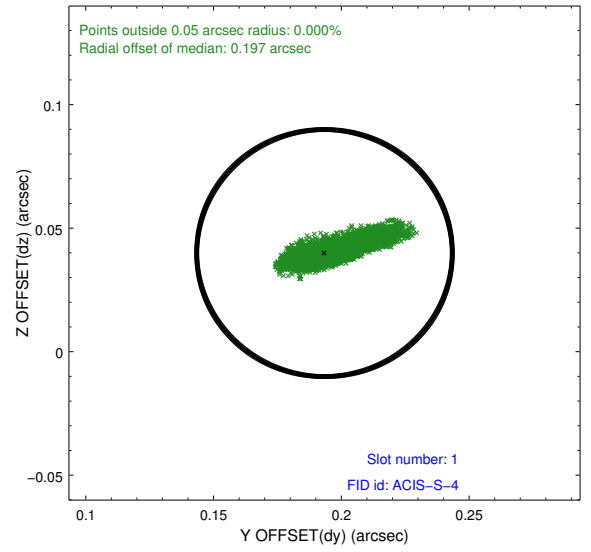
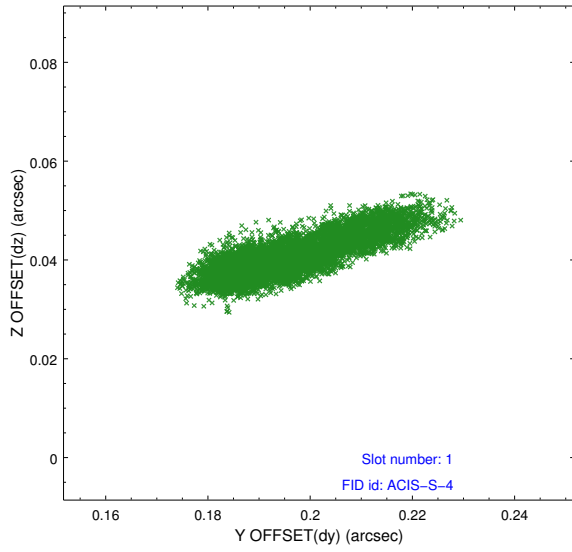


2.5 FID Slots

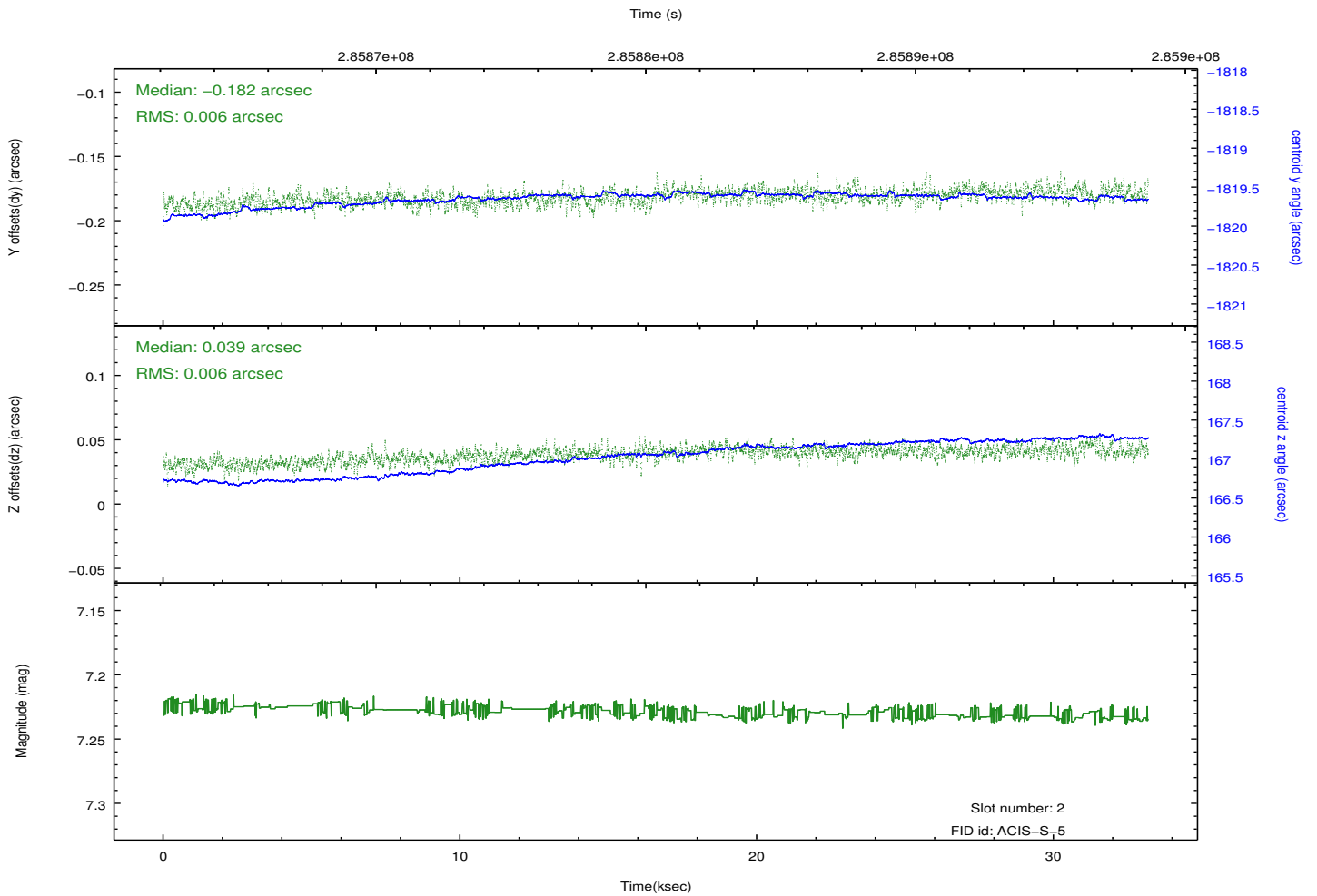
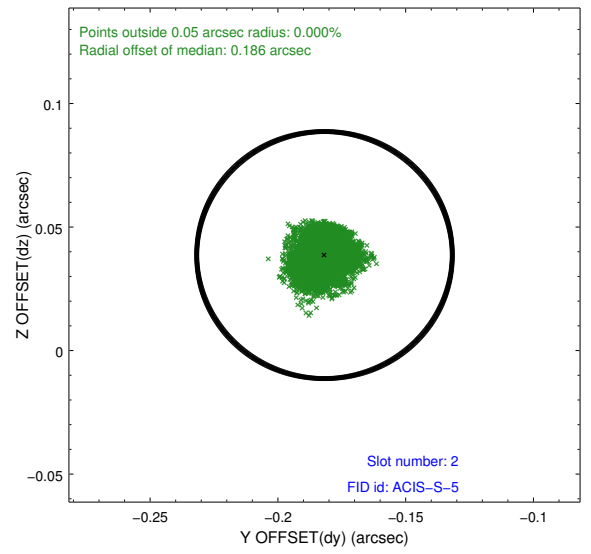
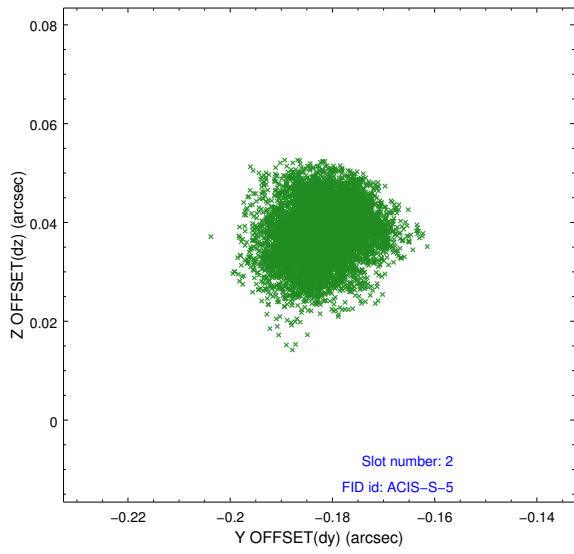
2.5.1 Slot 0



2.5.2 Slot 1



2.5.3 Slot 2



A Summary

A.1 Status

V&V Scientist	Jen Lauer
V&V Date (YYYY-MM-DD)	2012.04.19
V&V Edition	1
V&V Disposition and Status	OK
V&V Charge Time	33.0623998

A.2 Comments