

# V&V Reference Report

## L2 ASCDS Version : 8.4.4

Observation 7774 - L2 Version 2  
Chandra X-Ray Center

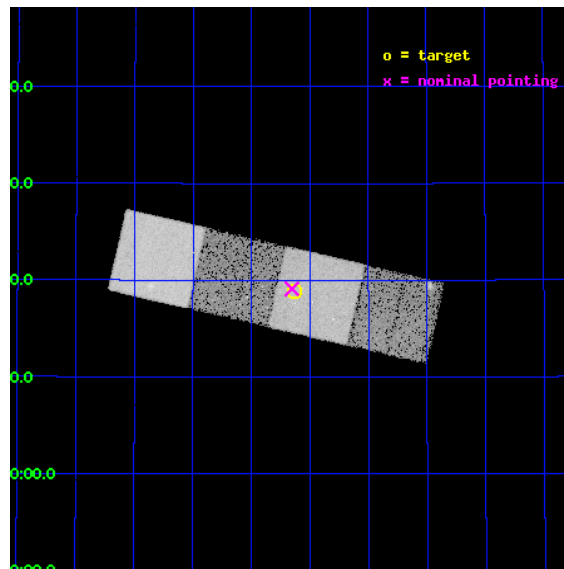
L2 Processing Date : May 4 2012

## Contents

<b>1</b>	<b>Front</b>	<b>2</b>
<b>2</b>	<b>OBI</b>	<b>3</b>
2.1	OBI . . . . .	3
2.1.1	Images . . . . .	3
2.1.2	Bias . . . . .	3
2.1.3	Parameters . . . . .	4
2.1.4	Events . . . . .	4
2.2	Compared Parameters . . . . .	5
2.3	Aspect . . . . .	6
2.4	Star Slots . . . . .	9
2.4.1	Slot 3 . . . . .	9
2.4.2	Slot 4 . . . . .	10
2.4.3	Slot 5 . . . . .	11
2.4.4	Slot 6 . . . . .	12
2.4.5	Slot 7 . . . . .	13
2.5	FID Slots . . . . .	14
2.5.1	Slot 0 . . . . .	14
2.5.2	Slot 1 . . . . .	15
2.5.3	Slot 2 . . . . .	16
<b>A</b>	<b>Summary</b>	<b>17</b>
A.1	Status . . . . .	17
A.2	Comments . . . . .	17

# 1 Front

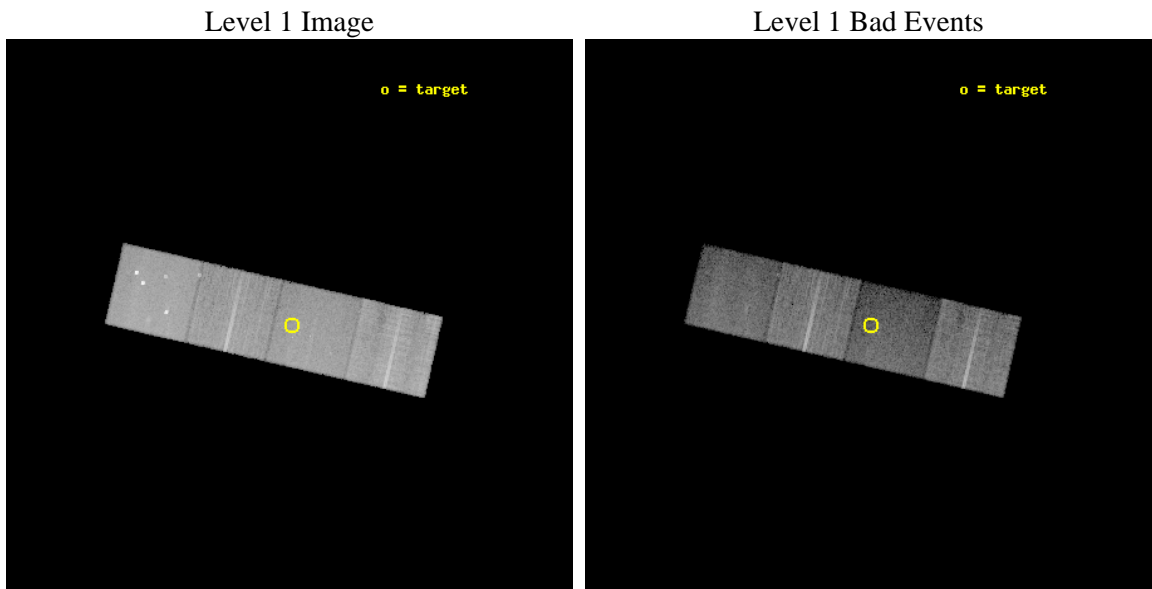
seq_num	701442	Sequence number
obs_id	7774	Observation id
title	Are Compton-thick quasars hidden among the population of heavily obscured Spitzer-selected AGN?	Proposal title
observer	Dr Cristian Vignali	Principal investigator
object	SST24 J142538.22+351855.2	Source name
dtcycle	0	&#160
cycle	P	events from which exps? Prim/Second/Both
ra_targ	216.409167	Observer's specified target RA [deg]
dec_targ	35.315333	Observer's specified target Dec [deg]
ra_nom	216.41343960776	Nominal RA [deg]
dec_nom	35.318704781689	Nominal Dec [deg]
roll_nom	12.879546809507	Nominal Roll [deg]
revision	2	Processing version of data
ontime	15044.300115705	Sum of GTIs [s]
livetime	14847.73525924	Livetime [s]
ontime5	15044.300115705	Sum of GTIs [s]
ontime6	15044.300115705	Sum of GTIs [s]
ontime7	15044.300115705	Sum of GTIs [s]
ontime8	15044.300115705	Sum of GTIs [s]
l2events	143206	Number of level 2 events



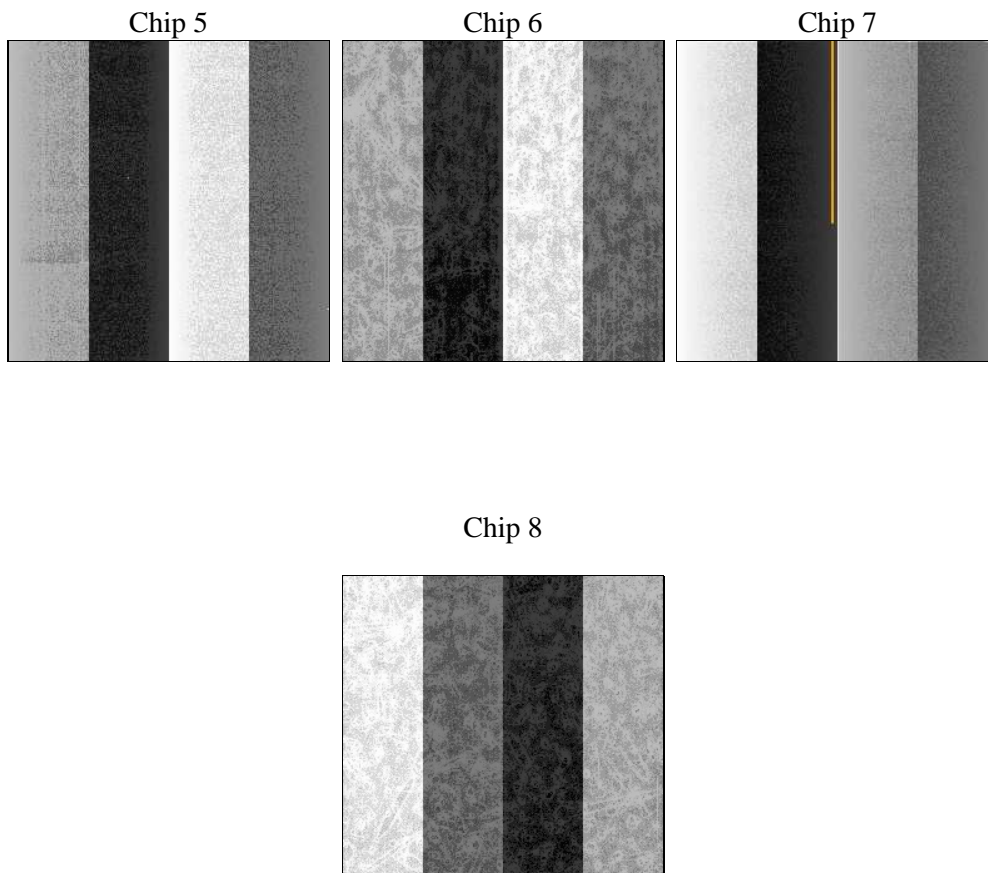
## 2 OBI

### 2.1 OBI

#### 2.1.1 Images



#### 2.1.2 Bias



### 2.1.3 Parameters

obi_num	0	Obi number	sched_exp_time	15000.000000	[s] Scheduled observation exposure time
ascdsver	8.4.4	Processing system revision	ontime	15044.300115705	Sum of GTIs [s]
caldsver	4.4.9	&#160	ontime5	15044.300115705	Sum of GTIs [s]
date	2012-05-04T13:45:05	Date and time of file creation	ontime6	15044.300115705	Sum of GTIs [s]
revision	2	Processing version of data	ontime7	15044.300115705	Sum of GTIs [s]
			ontime8	15044.300115705	Sum of GTIs [s]
			l1events	518939	Number of level 1 events

### 2.1.4 Events

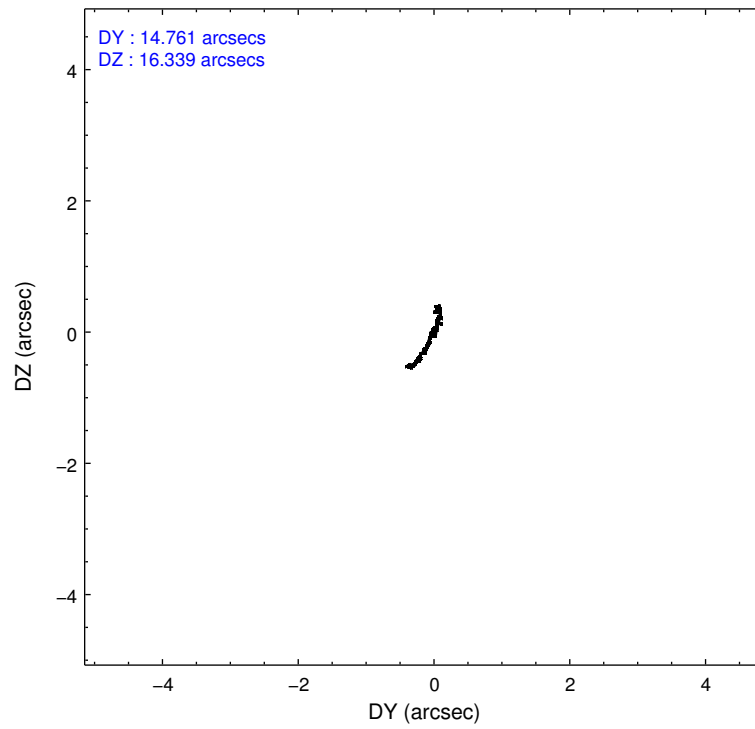
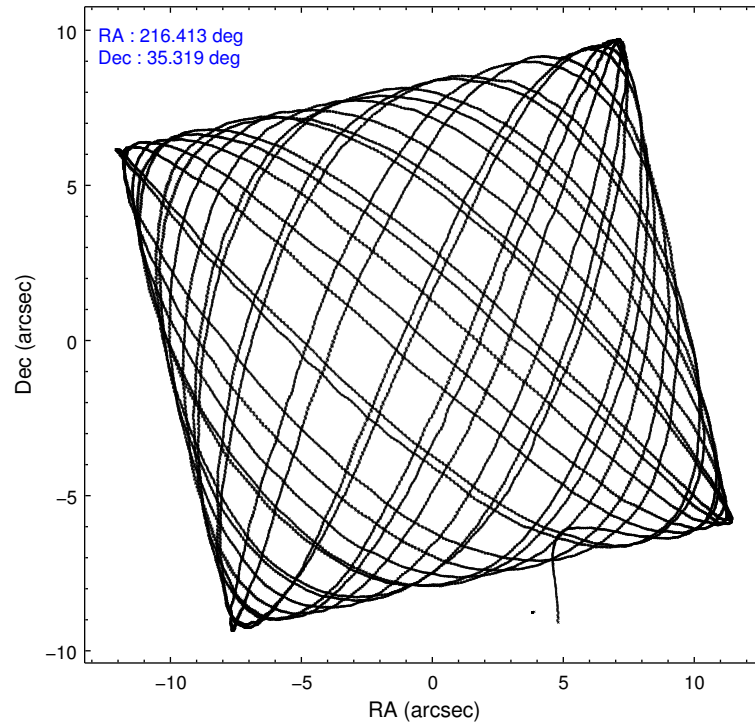
	ccd 5	ccd 6	ccd 7	ccd 8
level 1 events	152316	114808	108131	143684
rejected events	67443	103059	54748	106992
rejected %	44%	89%	50%	74%

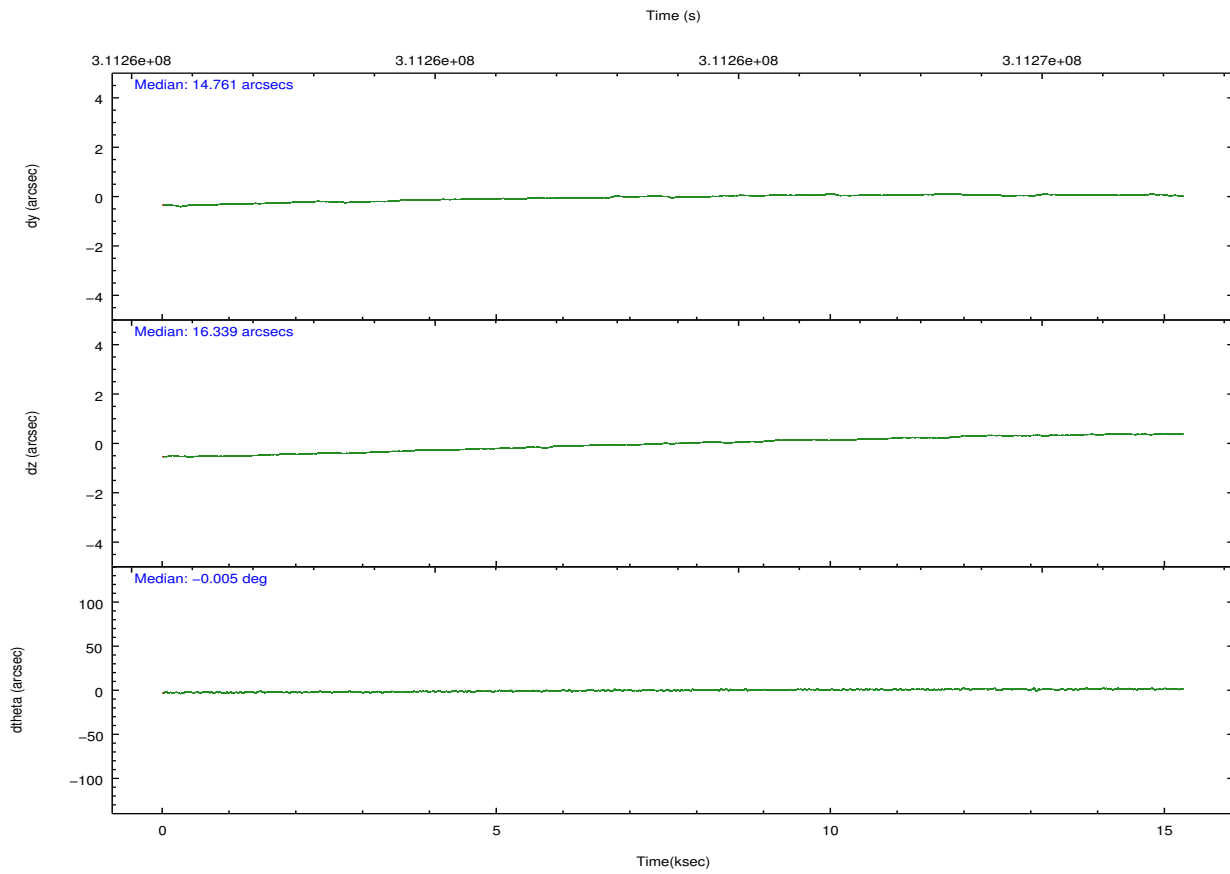
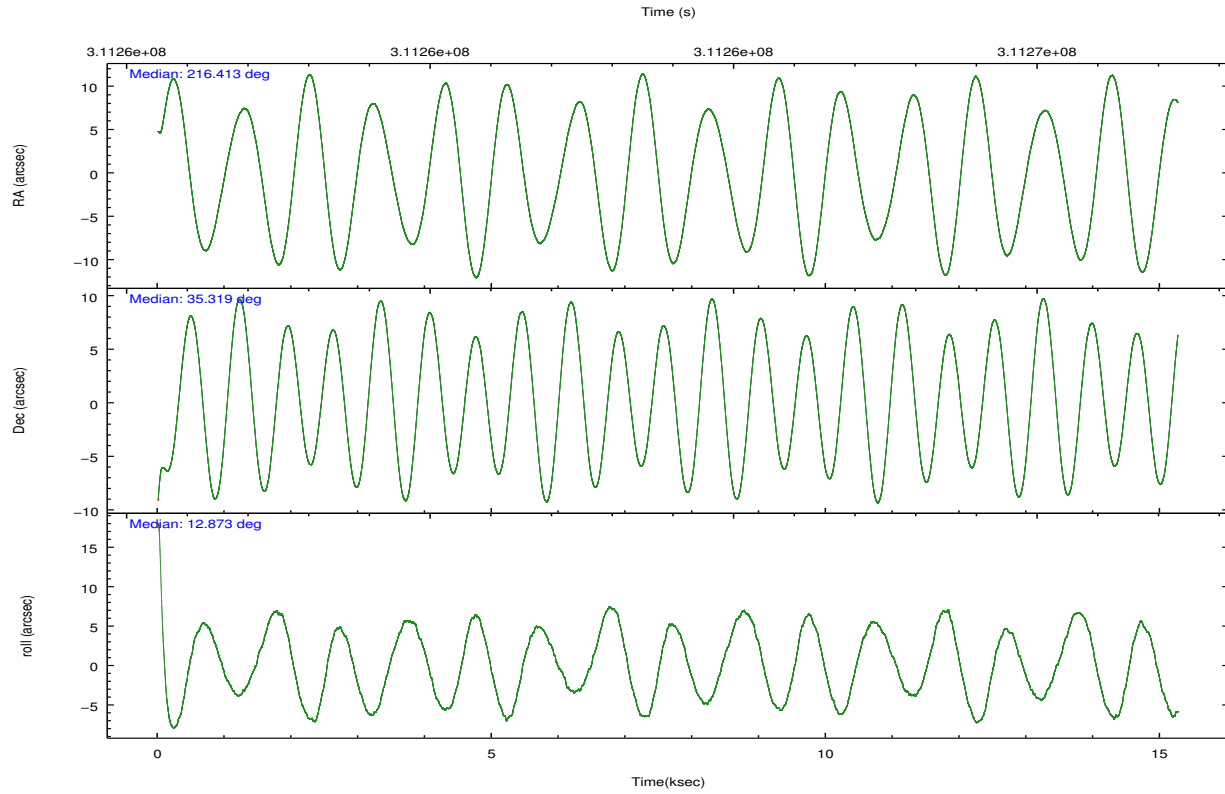
	ccd 5	ccd 6	ccd 7	ccd 8
grade 0 events	14384	4422	5574	10243
	9%	3%	5%	7%
grade 1 events	457	47	164	106
	0%	0%	0%	0%
grade 2 events	25806	2588	11248	8515
	16%	2%	10%	5%
grade 3 events	3273	1226	5097	4144
	2%	1%	4%	2%
grade 4 events	3280	1257	5047	3833
	2%	1%	4%	2%
grade 5 events	11315	3860	11638	5838
	7%	3%	10%	4%
grade 6 events	38145	2259	26429	9968
	25%	1%	24%	6%
grade 7 events	55656	99149	42934	101037
	36%	86%	39%	70%

## 2.2 Compared Parameters

Parameter	Planned	Actual	Parameter	Planned	Actual
Instrument	ACIS	ACIS	Obspar format version number	7	7
Detector	ACIS-5678	ACIS-5678	Obspar file type	PREDICTED	ACTUAL
Grating	NONE	NONE	Obspar update status	NONE	UPDATED
Data mode	VFAINT	VFAINT	Number of optional ACIS chips dropped	0	0
Observation mode	POINTING	POINTING	On-chip summing requested	N	N
[deg] Pointing RA	216.389170	216.4134396077627	Subarray requested	NONE	NONE
[deg] Pointing Dec	35.299856	35.31870478168945	Alternating exposures requested	N	N
[deg] Pointing Roll	12.736933	12.87954680950735	[s] Primary exposure time	0.000000	3.1
[mm] SIM focus pos	-0.684267	-0.6828225247311905			
[mm] SIM defocus	0	0.001444936568705701			
[mm] SIM translation stage pos	-190.132523	-190.1425803651734			
[mm] SIM translation stage offset	0	0.01005778216563158			
[s] Observation start time (MET)	311256565.184000	311255658.89613			
Observation start date	2007-11-12T12:08:20	2007-11-12T11:54:18			
[s] Observation end time (MET)	311271565.184000	311272276.70943			
Observation end date	2007-11-12T16:18:20	2007-11-12T16:31:16			
Read mode	TIMED	TIMED			

## 2.3 Aspect



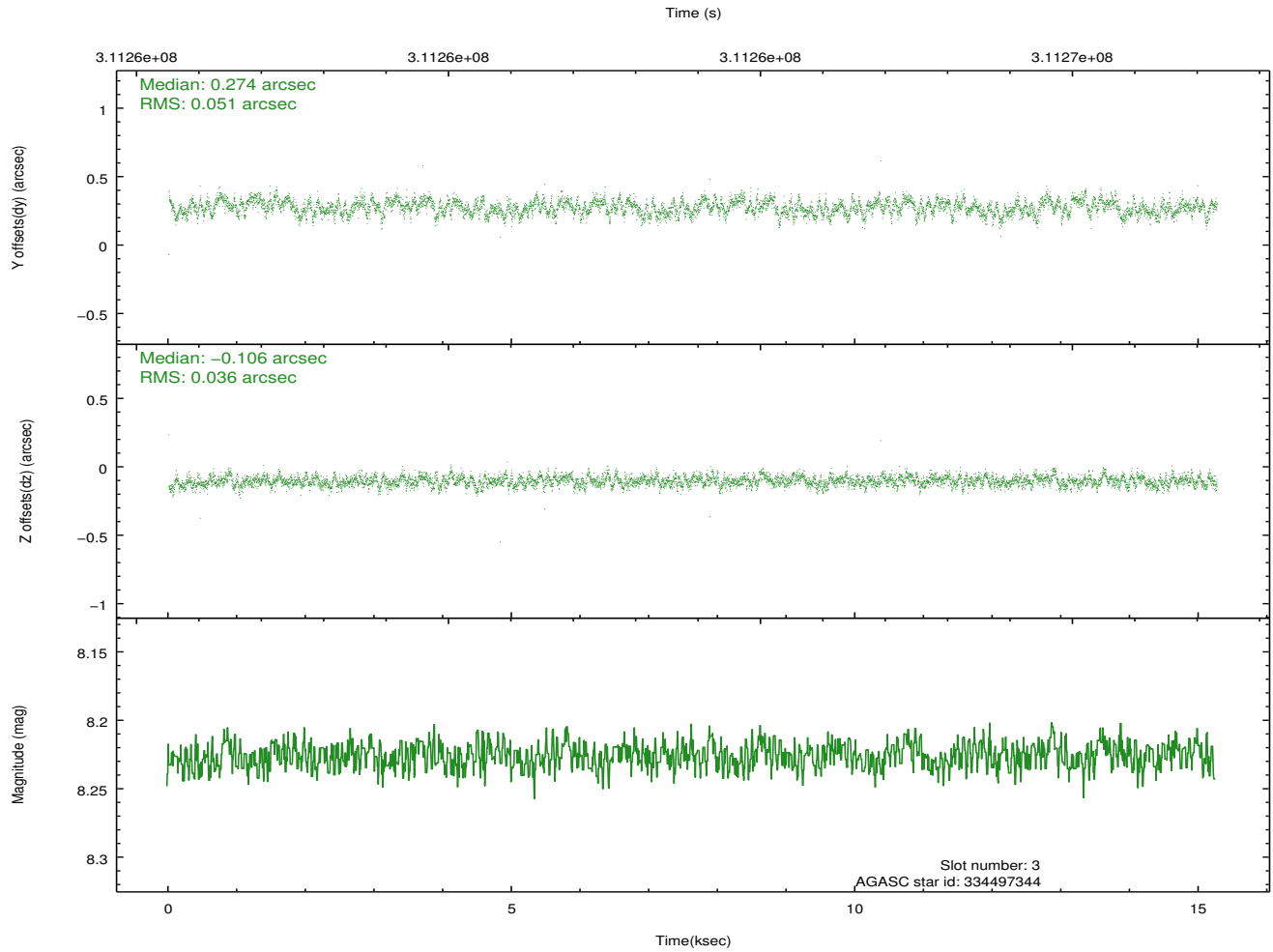
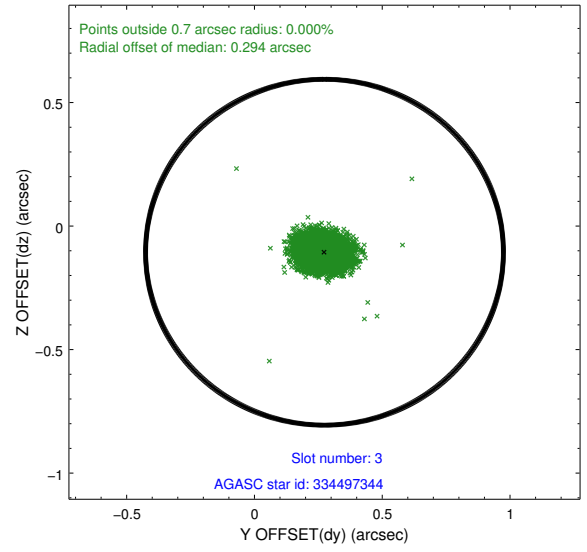
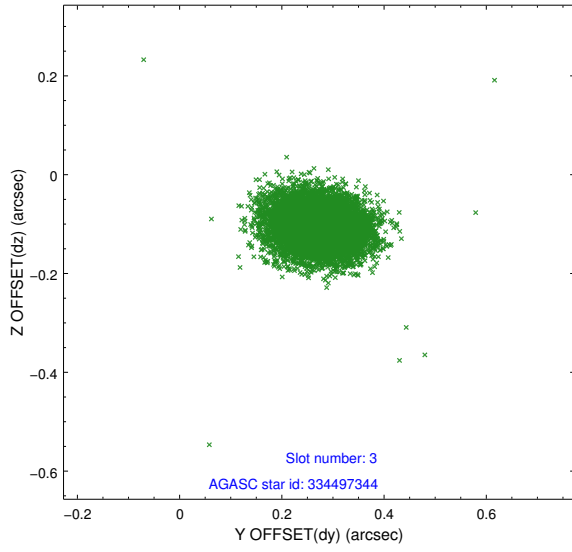


### Slot Statistics

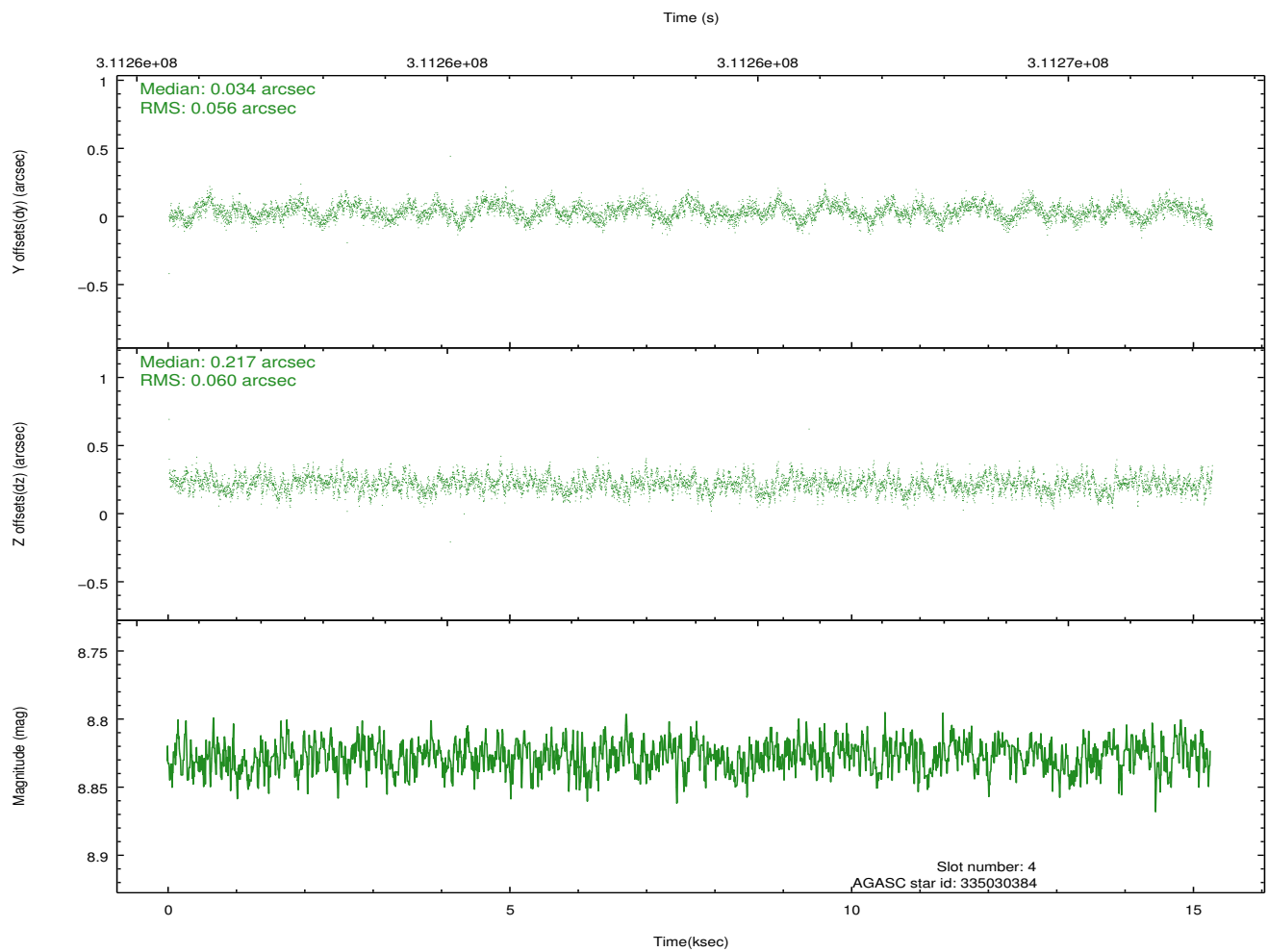
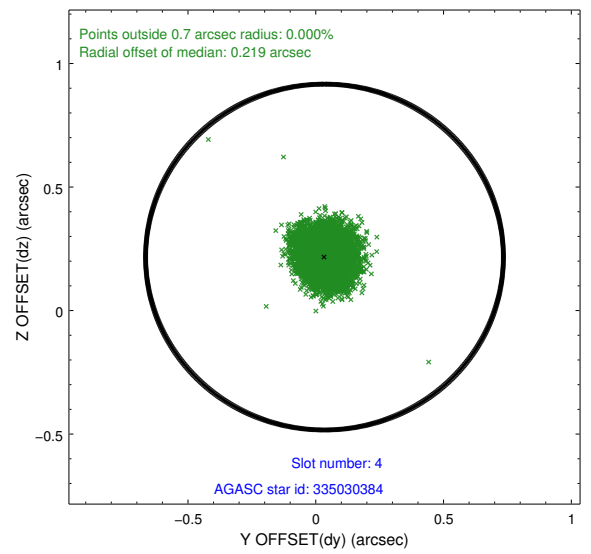
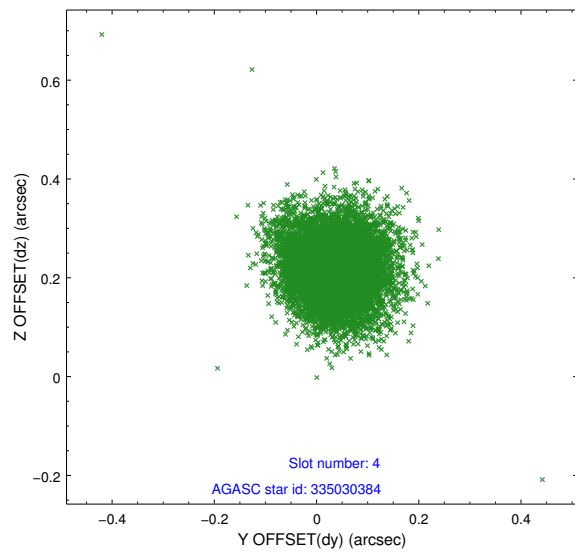
slot	status	id	mag	n_pts	med_dy	med_dz	dr1	dr2	ra	dec	mean_y	mean_z
0	FID	ACIS-S-1	7.18	3723	0.087	-0.094	0.010	0.018	0.000000	0.000000	928.43	-1733.40
1	FID	ACIS-S-5	7.22	3723	-0.152	0.046	0.010	0.015	0.000000	0.000000	-1820.61	164.02
2	FID	ACIS-S-6	7.32	3723	0.043	0.059	0.011	0.017	0.000000	0.000000	393.66	808.30
3	GUIDE	334497344	8.23	7441	0.274	-0.106	0.065	0.106	215.557968	35.648808	-2091.97	1771.51
4	GUIDE	335030384	8.83	7439	0.034	0.217	0.087	0.141	216.806407	34.722197	746.50	-2297.27
5	GUIDE	335414448	7.38	7446	0.019	-0.241	0.066	0.125	216.992261	35.577204	1944.28	588.99
6	GUIDE	335419120	9.62	7437	-0.201	-0.020	0.121	0.193	216.521861	35.833546	801.44	1789.31
7	GUIDE	335419408	9.41	7438	-0.129	0.153	0.104	0.169	217.210194	35.075700	2183.98	-1309.79

## 2.4 Star Slots

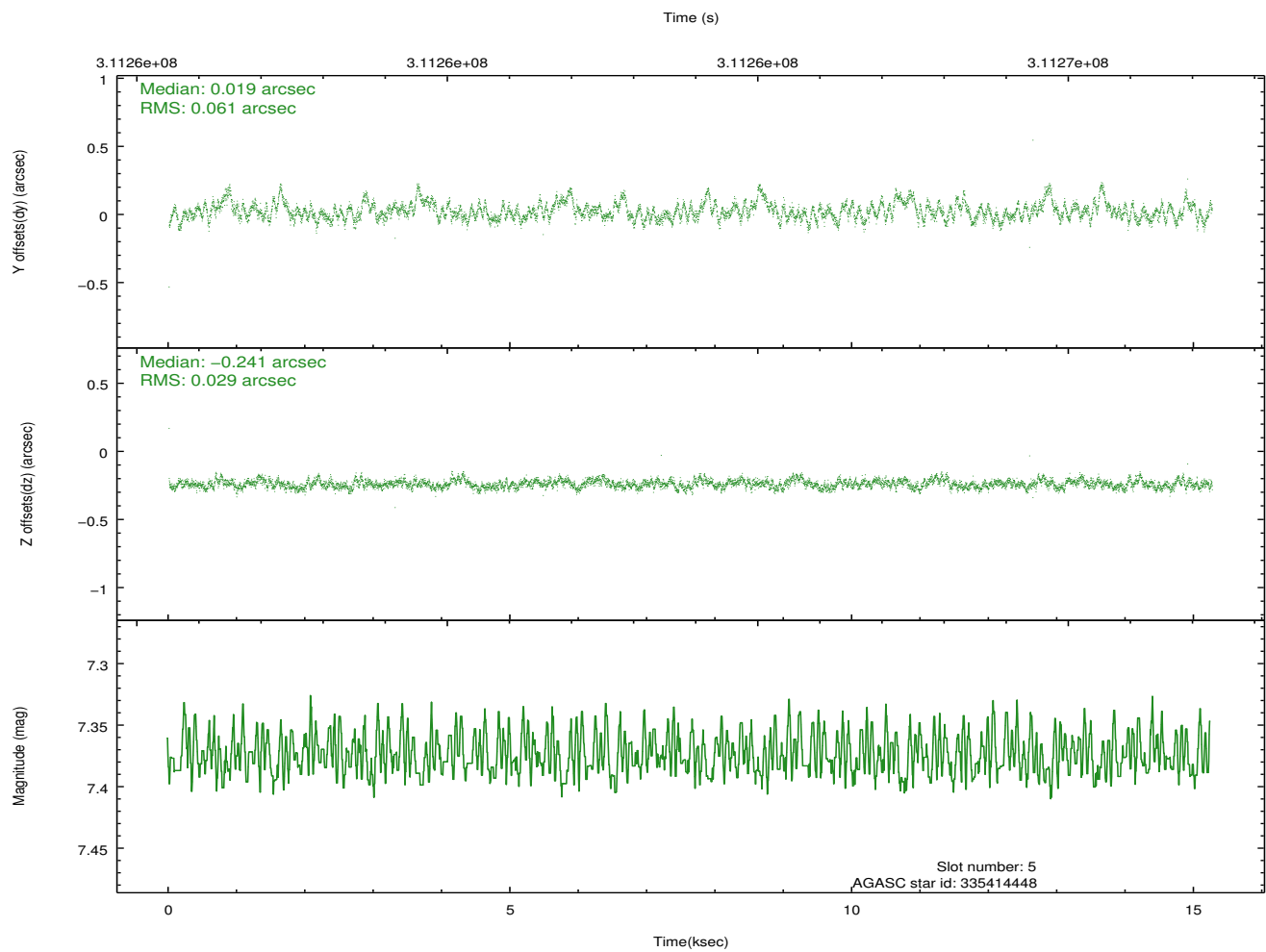
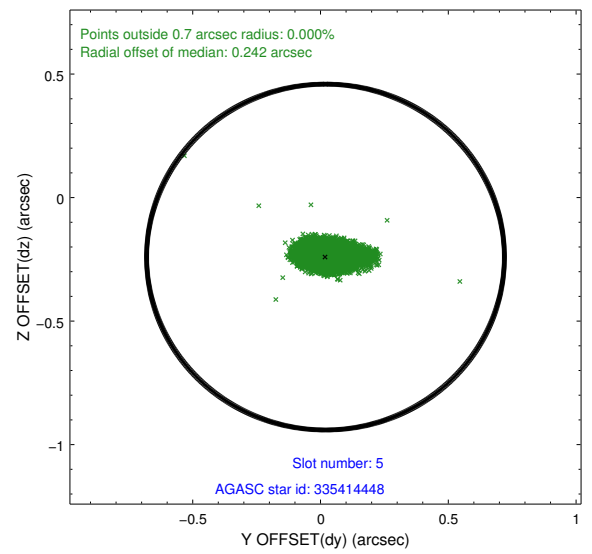
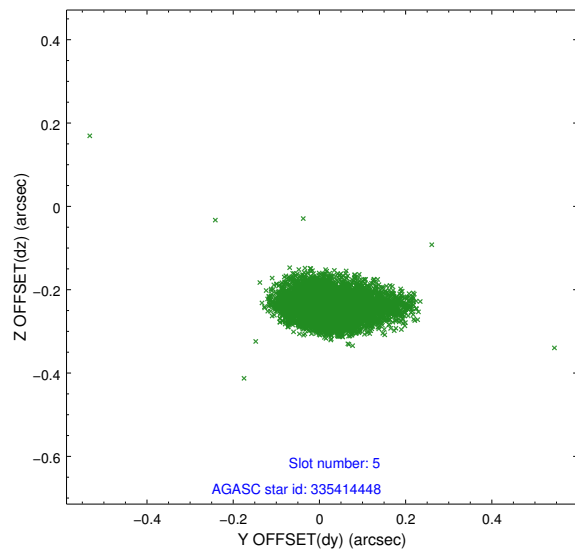
### 2.4.1 Slot 3



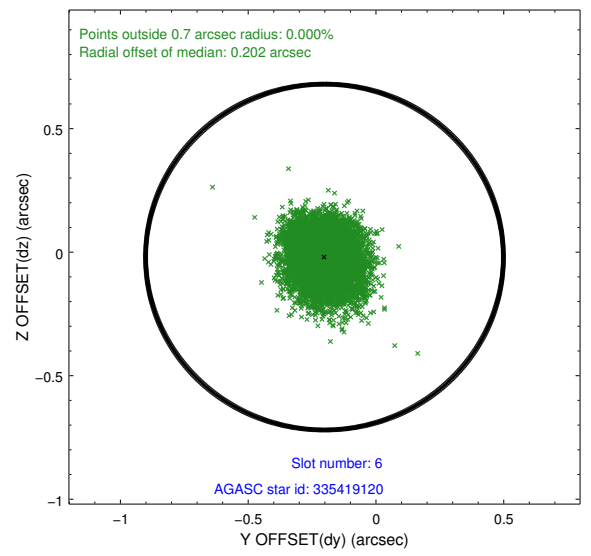
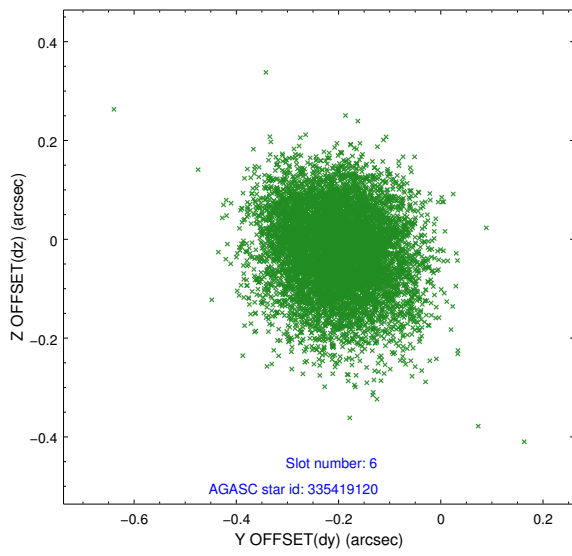
## 2.4.2 Slot 4



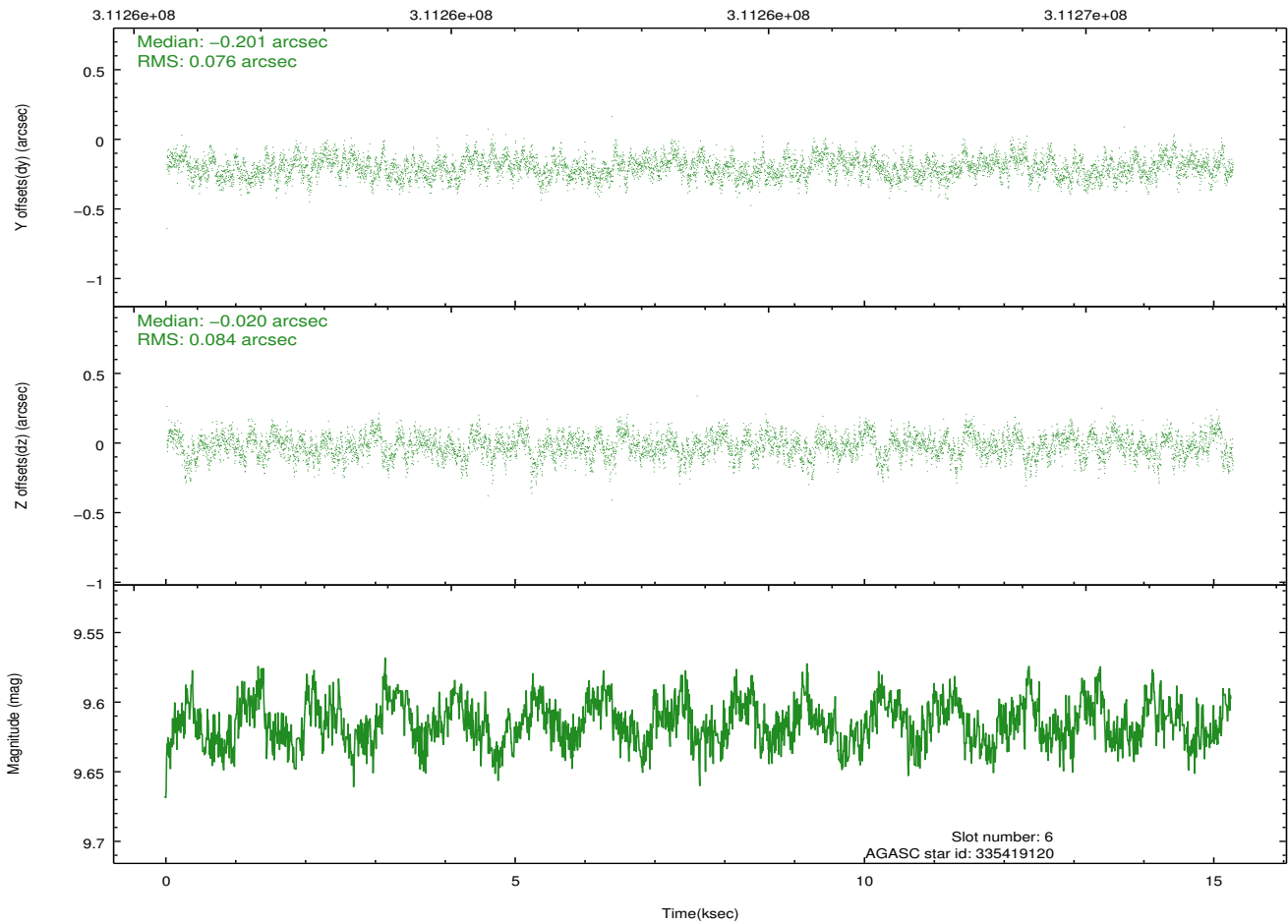
### 2.4.3 Slot 5



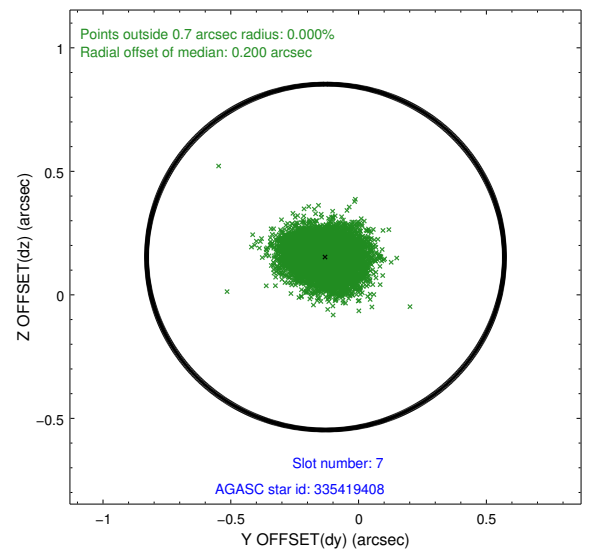
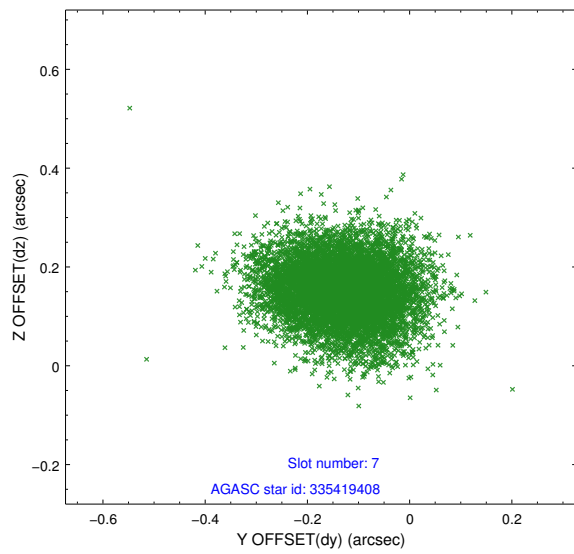
## 2.4.4 Slot 6



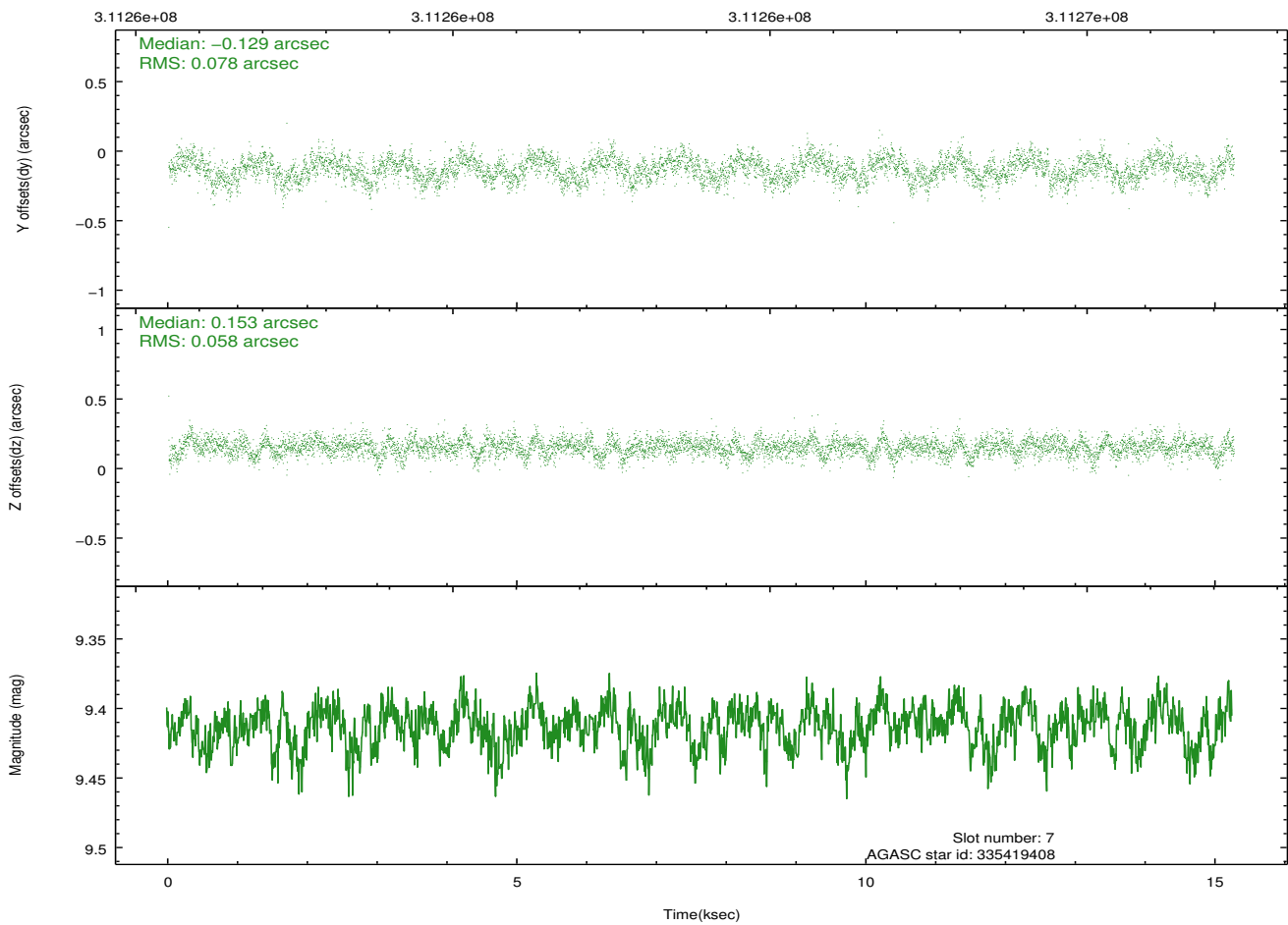
Time (s)



## 2.4.5 Slot 7

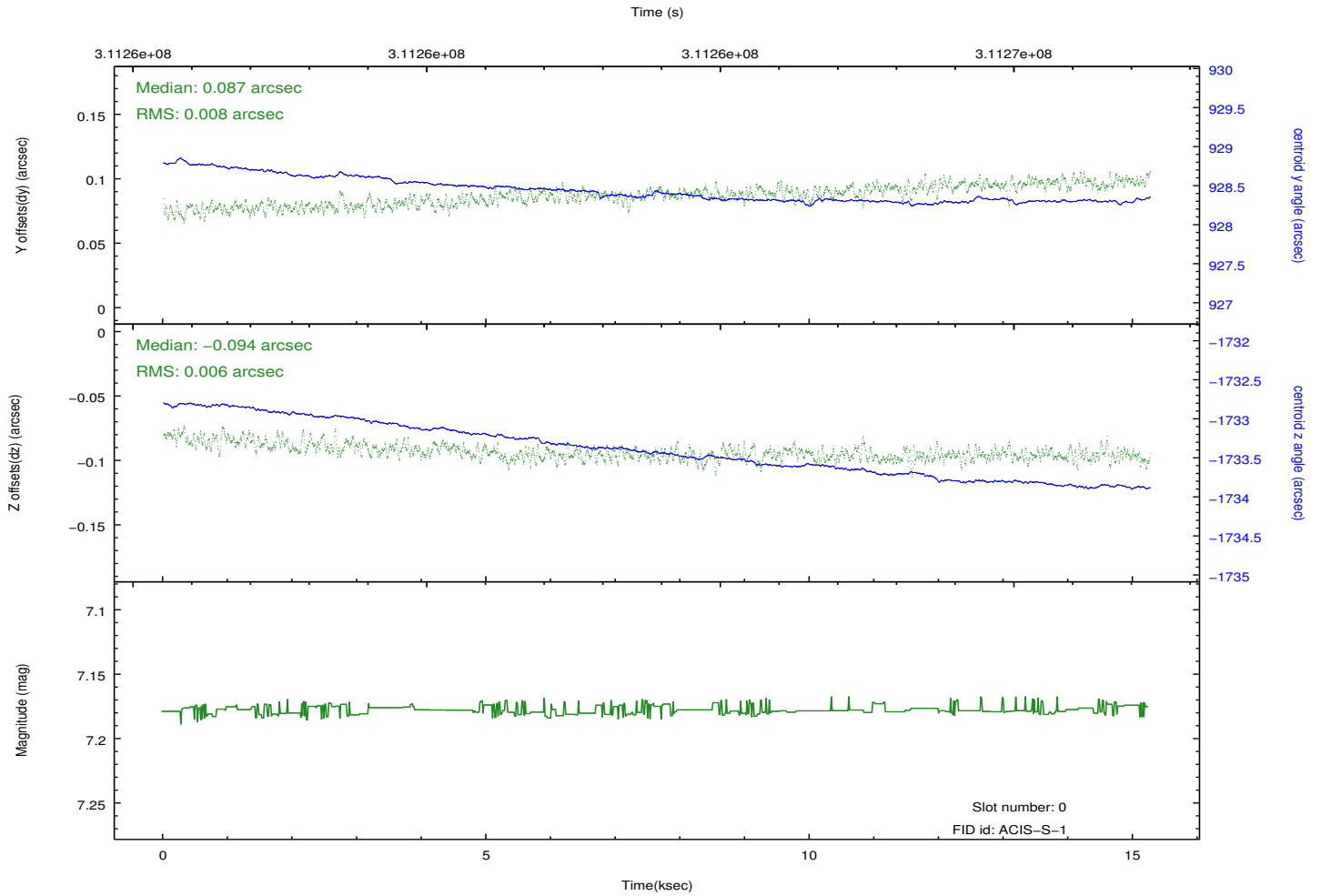
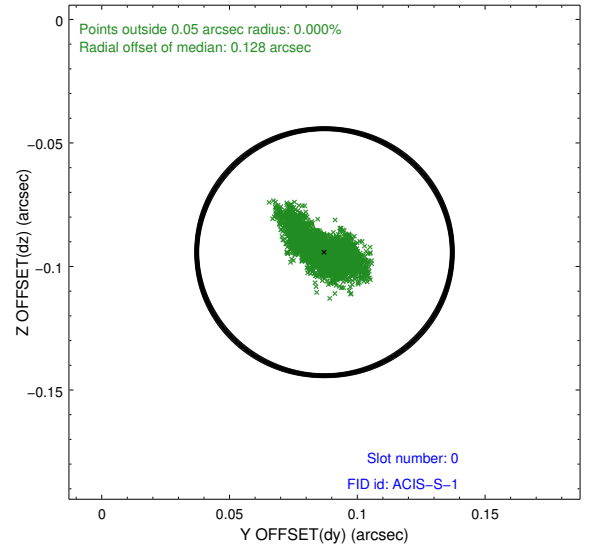
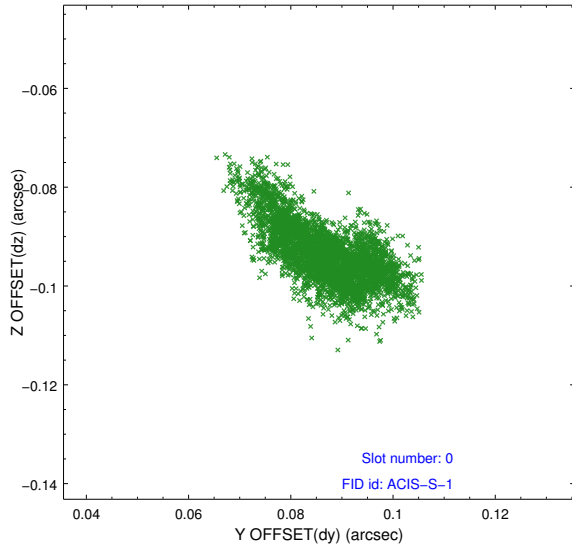


Time (s)

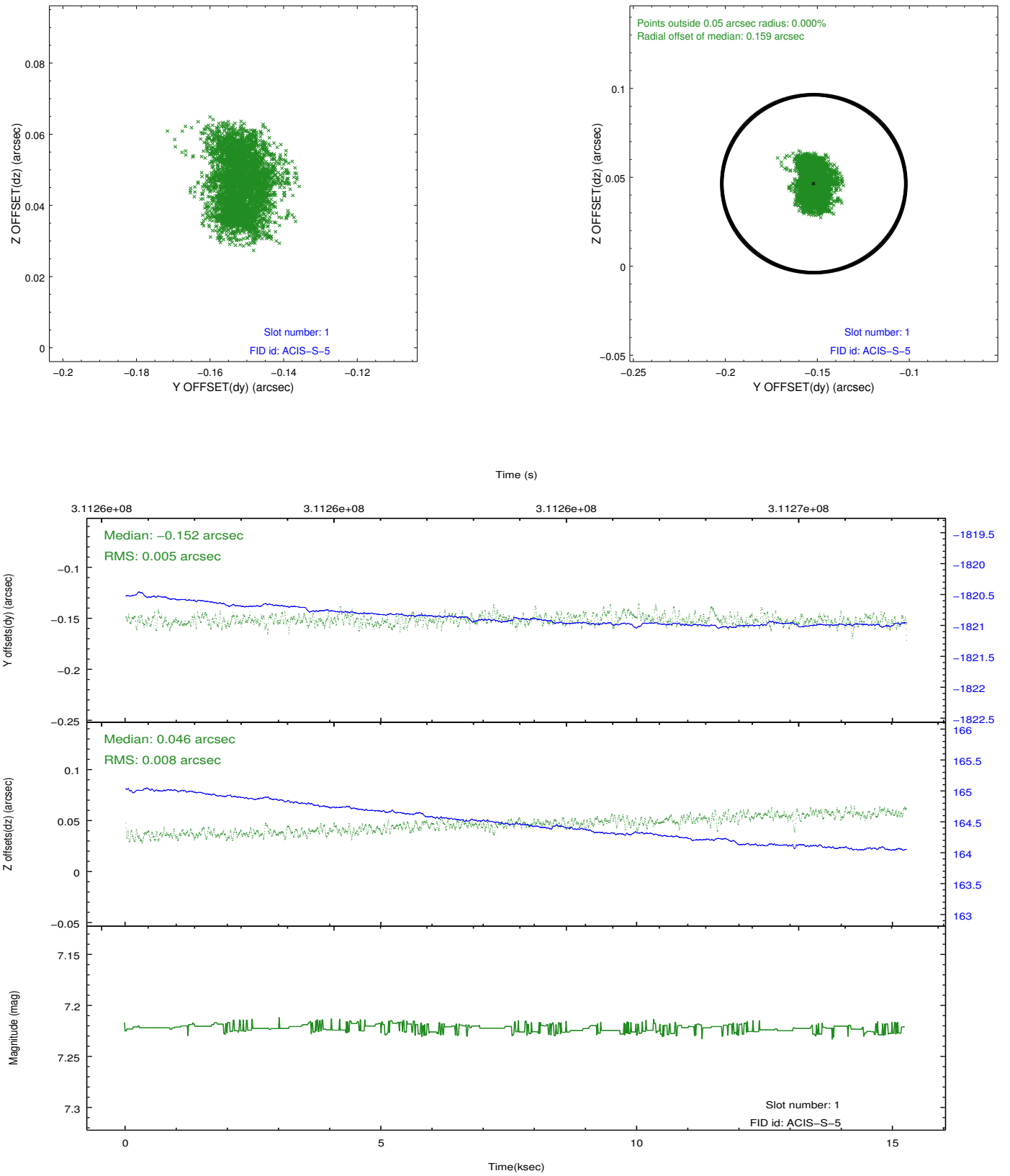


## 2.5 FID Slots

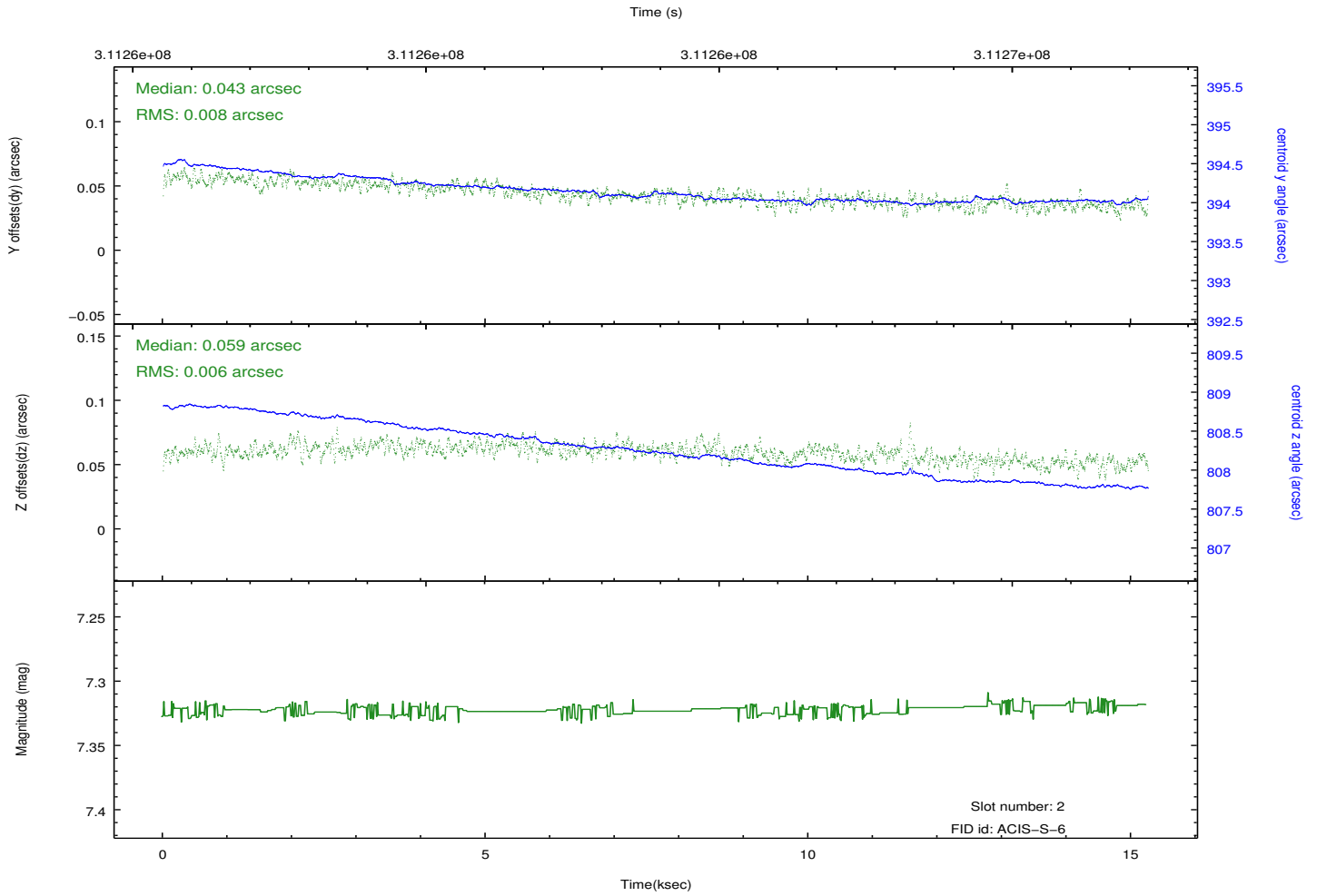
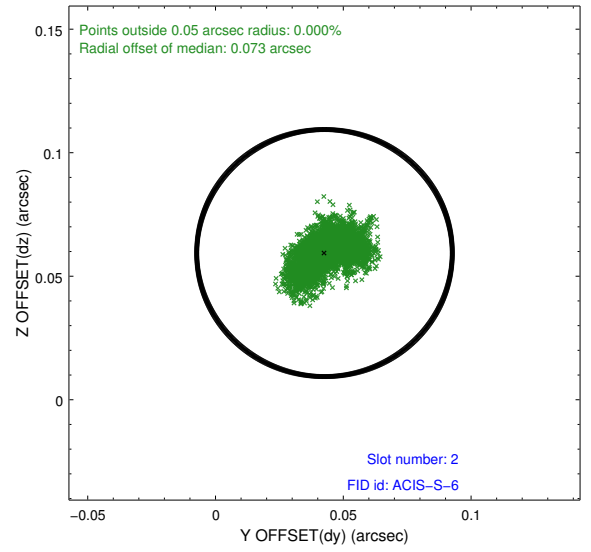
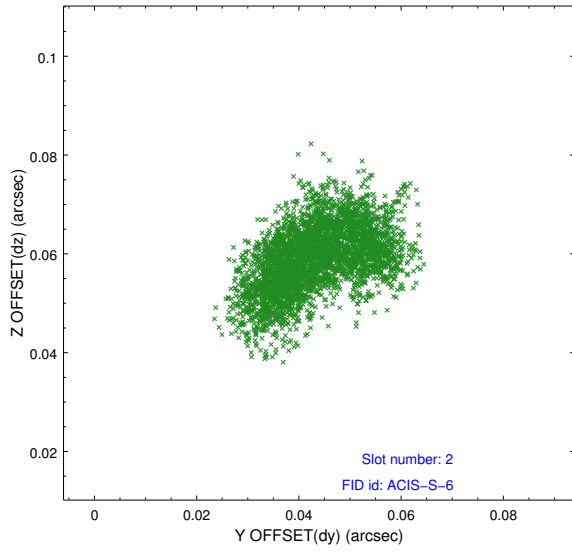
### 2.5.1 Slot 0



## 2.5.2 Slot 1



### 2.5.3 Slot 2



# A Summary

## A.1 Status

V&V Scientist	Beth Sundheim
V&V Date (YYYY-MM-DD)	2012.05.07
V&V Edition	1
V&V Disposition and Status	OK
V&V Charge Time	15.0443001

## A.2 Comments