

V&V Reference Report

L2 ASCDS Version : 8.4.4

Observation 7824 - L2 Version 2
Chandra X-Ray Center

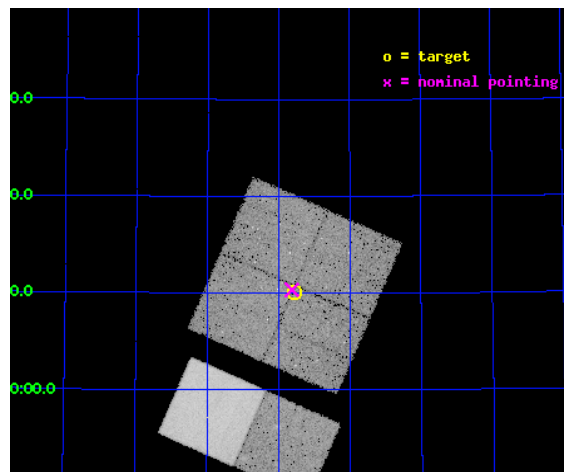
L2 Processing Date : Apr 27 2012

Contents

1	Front	2
2	OBI	3
2.1	OBI	3
2.1.1	Images	3
2.1.2	Bias	3
2.1.3	Parameters	4
2.1.4	Events	4
2.2	Compared Parameters	5
2.3	Aspect	6
2.4	Star Slots	9
2.4.1	Slot 3	9
2.4.2	Slot 4	10
2.4.3	Slot 5	11
2.4.4	Slot 6	12
2.4.5	Slot 7	13
2.5	FID Slots	14
2.5.1	Slot 0	14
2.5.2	Slot 1	15
2.5.3	Slot 2	16
A	Summary	17
A.1	Status	17
A.2	Comments	17

1 Front

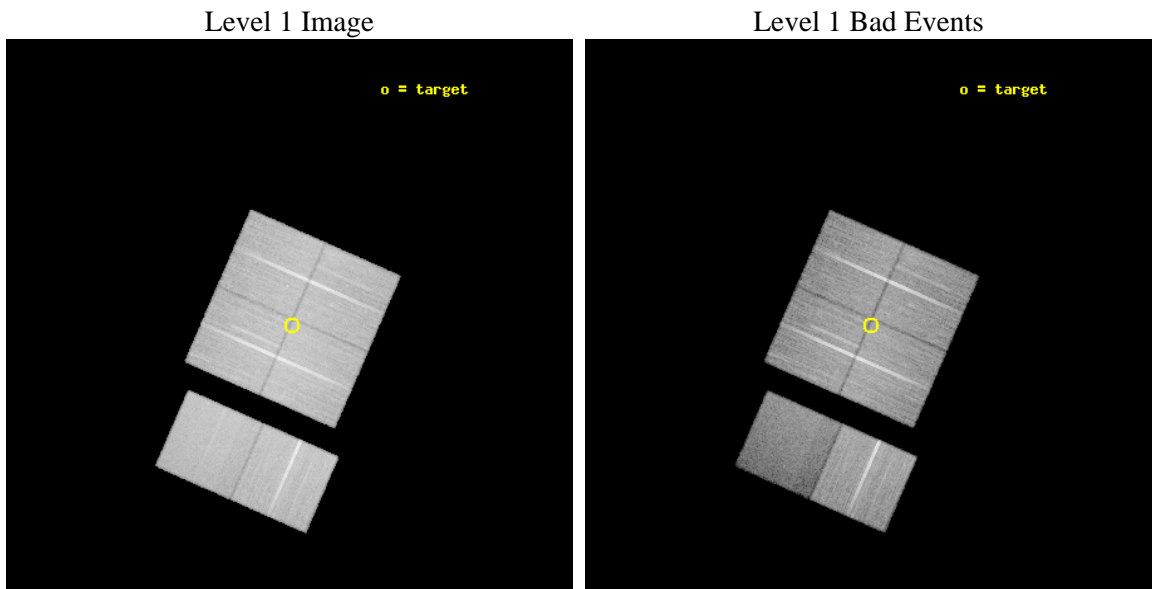
seq_num	701488	Sequence number
obs_id	7824	Observation id
title	What Powers the z~2 Spitzer ULIRGs in the First Look Survey	Propos
observer	Dr. Lin Yan	Principal investigator
object	FLS1	Source name
dtcycle	0	
cycle	P	events from which exps? Prim/Second/Both
ra_targ	258.692917	Observer's specified target RA [deg]
dec_targ	60.168194	Observer's specified target Dec [deg]
ra_nom	258.70344325174	Nominal RA [deg]
dec_nom	60.172362443374	Nominal Dec [deg]
roll_nom	203.69851326293	Nominal Roll [deg]
revision	2	Processing version of data
ontime	30044.63607657	Sum of GTIs [s]
livetime	29664.19280386	Livetime [s]
ontime0	30054.358917773	Sum of GTIs [s]
ontime1	30051.117987275	Sum of GTIs [s]
ontime2	30057.599888086	Sum of GTIs [s]
ontime3	30044.63607657	Sum of GTIs [s]
ontime6	30054.358897924	Sum of GTIs [s]
ontime7	30057.599888086	Sum of GTIs [s]
l2events	191456	Number of level 2 events



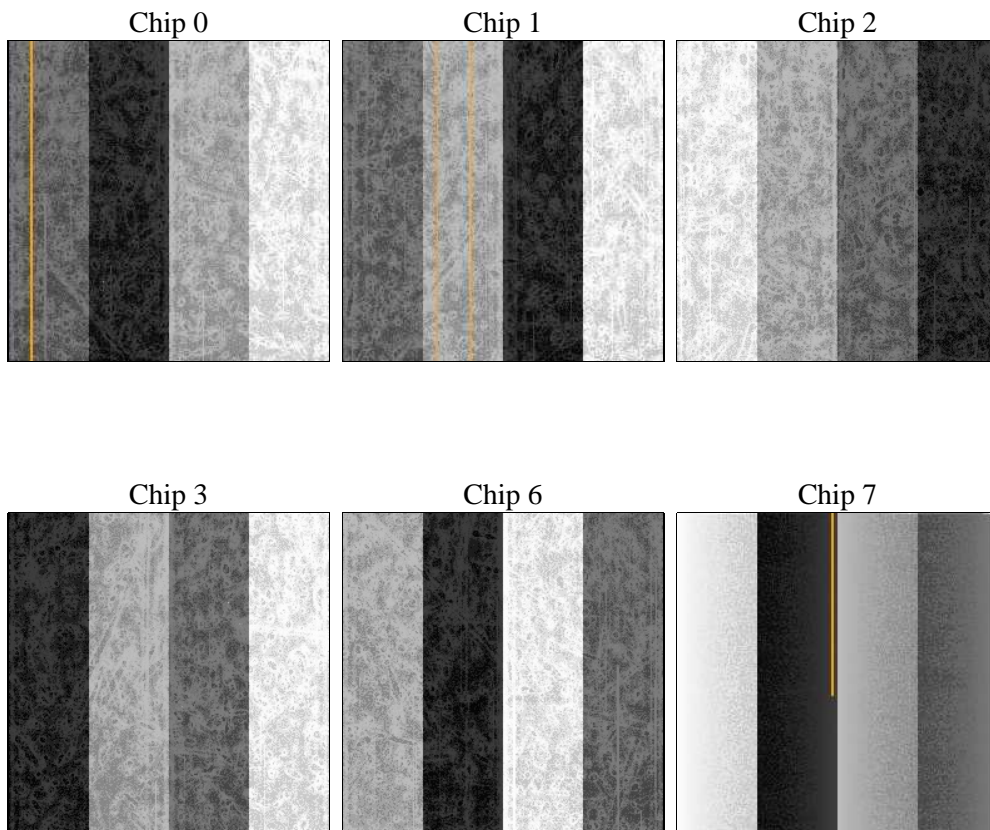
2 OBI

2.1 OBI

2.1.1 Images



2.1.2 Bias



2.1.3 Parameters

obi_num	0	Obi number	sched_exp_time	30000.000000	[s] Scheduled observation exposure time
ascdsver	8.4.4	Processing system revision	ontime	30044.63607657	Sum of GTIs [s]
caldsver	4.4.9	 	ontime0	30054.358917773	Sum of GTIs [s]
date	2012-04-27T14:31:32	Date and time of file creation	ontime1	30051.117987275	Sum of GTIs [s]
revision	2	Processing version of data	ontime2	30057.599888086	Sum of GTIs [s]
			ontime3	30044.63607657	Sum of GTIs [s]
			ontime6	30054.358897924	Sum of GTIs [s]
			ontime7	30057.599888086	Sum of GTIs [s]
			l1events	1373850	Number of level 1 events

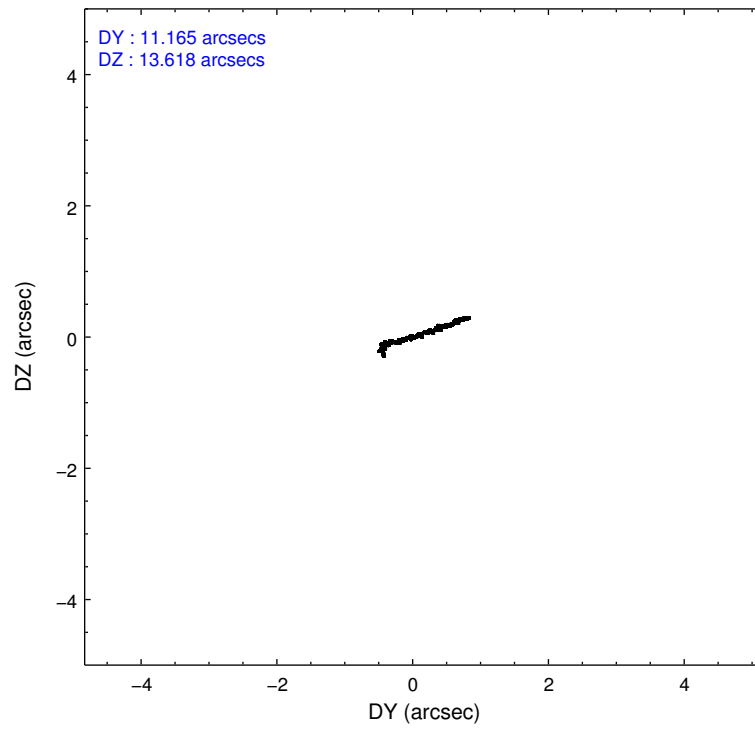
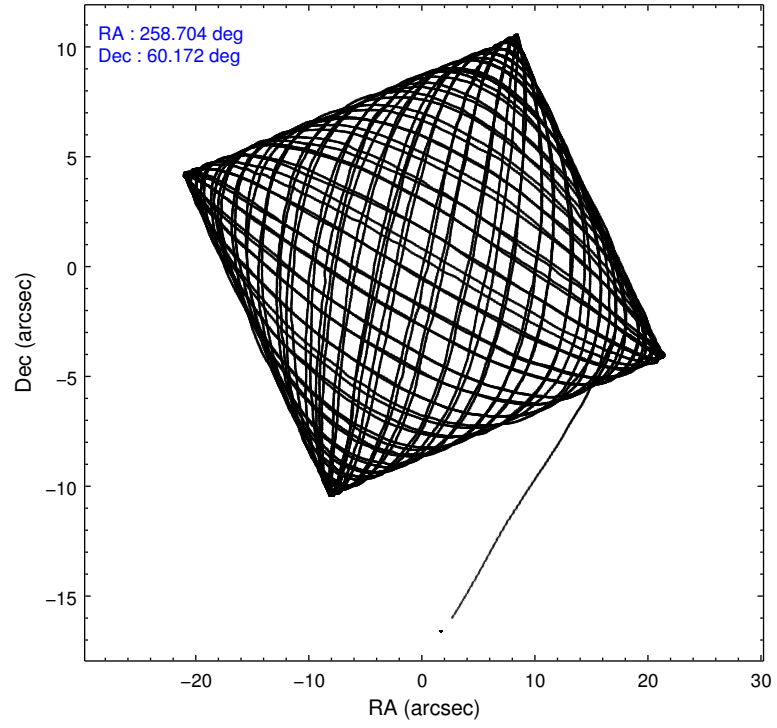
2.1.4 Events

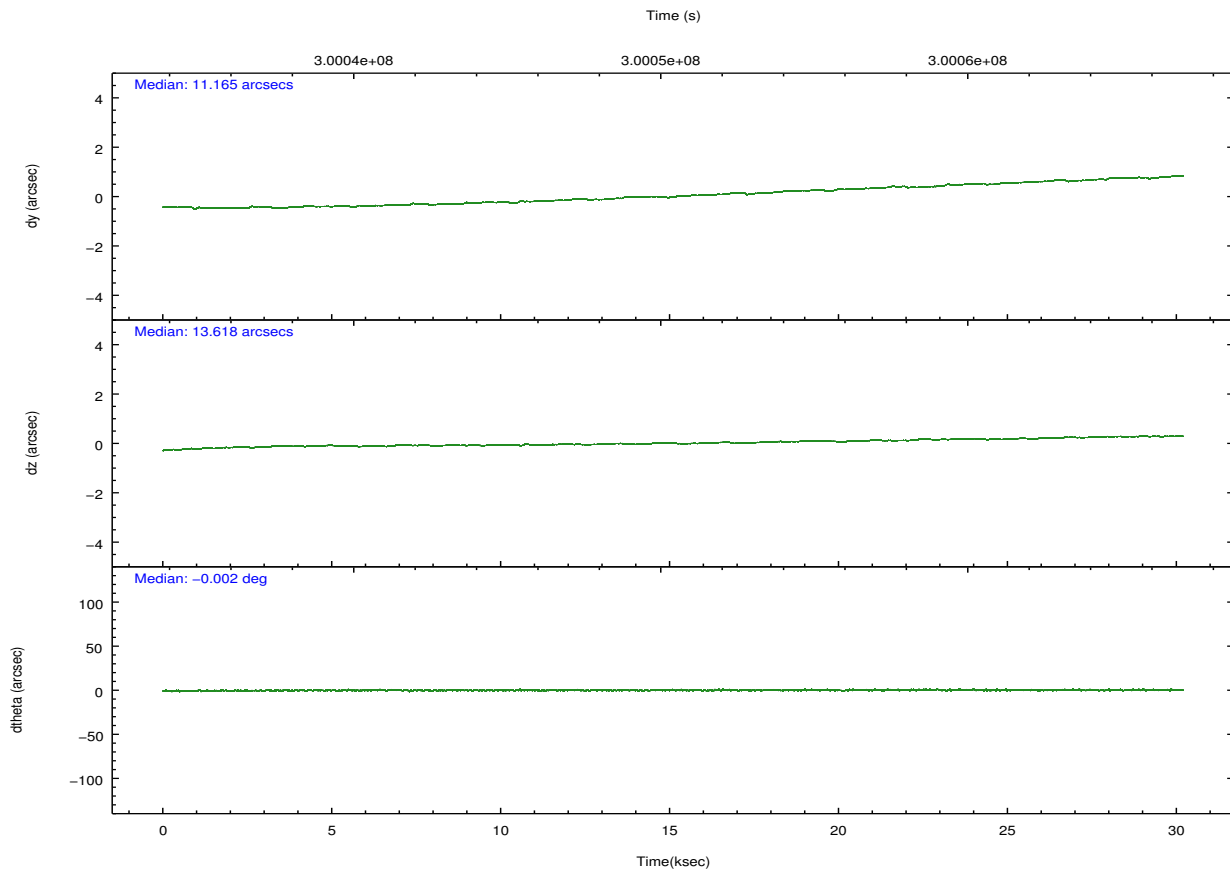
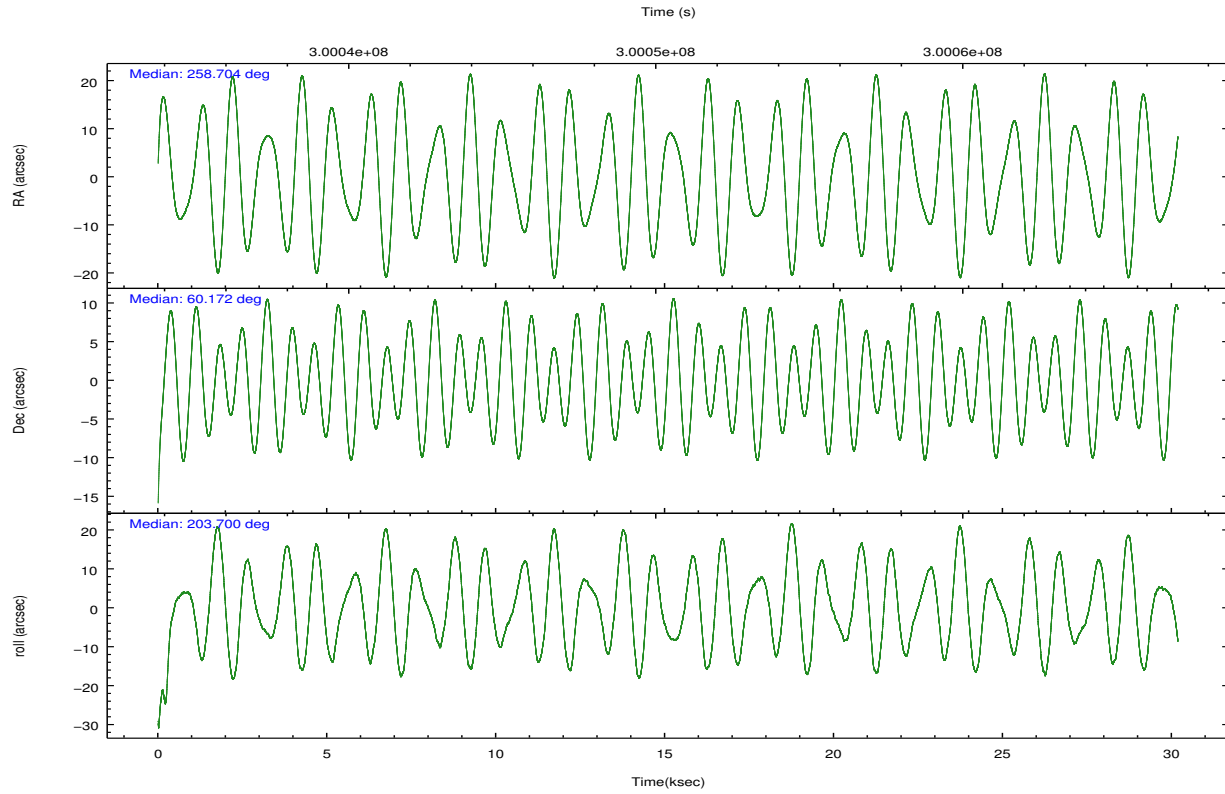
	ccd 0	ccd 1	ccd 2	ccd 3	ccd 6	ccd 7		ccd 0	ccd 1	ccd 2	ccd 3	ccd 6	ccd 7
level 1 events	220028	216558	248684	231474	242617	214489	grade 0 events	7594	8058	8040	7770	8458	10669
rejected events	198484	193296	227374	210731	219291	109806		3%	3%	3%	3%	3%	4%
rejected %	90%	89%	91%	91%	90%	51%	grade 1 events	115	112	123	140	99	318
								0%	0%	0%	0%	0%	0%
							grade 2 events	5218	5219	4956	4491	5190	21908
								2%	2%	1%	1%	2%	10%
							grade 3 events	2385	2637	2247	2302	2543	9664
								1%	1%	0%	0%	1%	4%
							grade 4 events	2329	2640	2320	2241	2449	9780
								1%	1%	0%	0%	1%	4%
							grade 5 events	6379	7330	6117	7825	7881	23041
								2%	3%	2%	3%	3%	10%
							grade 6 events	4026	4709	3751	3940	4688	52673
								1%	2%	1%	1%	1%	24%
							grade 7 events	191982	185853	221130	202765	211309	86436
								87%	85%	88%	87%	87%	40%

2.2 Compared Parameters

Parameter	Planned	Actual	Parameter	Planned	Actual
Instrument	ACIS	ACIS	Obspar format version number	7	7
Detector	ACIS-012367	ACIS-012367	Obspar file type	PREDICTED	ACTUAL
Grating	NONE	NONE	Obspar update status	NONE	UPDATED
Data mode	VFAINT	VFAINT	CCD I0 on	Y	Y
Observation mode	POINTING	POINTING	CCD I1 on	Y	Y
[deg] Pointing RA	258.736005	258.7034432517435	CCD I2 on	Y	Y
[deg] Pointing Dec	60.194600	60.17236244337386	CCD I3 on	Y	Y
[deg] Pointing Roll	203.461583	203.6985132629263	CCD S0 on	N	N
[mm] SIM focus pos	-0.782348	-0.7809083437167272	CCD S1 on	N	N
[mm] SIM defocus	0	0.001439871863259334	CCD S2 on	O1	Y
[mm] SIM translation stage pos	-233.992463	-233.9897249090783	CCD S3 on	O2	Y
[mm] SIM translation stage offset	0.4	0.3972719061486032	CCD S4 on	N	N
[s] Observation start time (MET)	300035491.184000	300034474.95643	CCD S5 on	N	N
Observation start date	2007-07-05T15:10:26	2007-07-05T14:54:34	Number of optional ACIS chips dropped	0	0
[s] Observation end time (MET)	300065491.184000	300066362.70796	On-chip summing requested	N	N
Observation end date	2007-07-05T23:30:26	2007-07-05T23:46:02	Subarray requested	NONE	NONE
Read mode	TIMED	TIMED	Alternating exposures requested	N	N
			[s] Primary exposure time	0.000000	3.2

2.3 Aspect



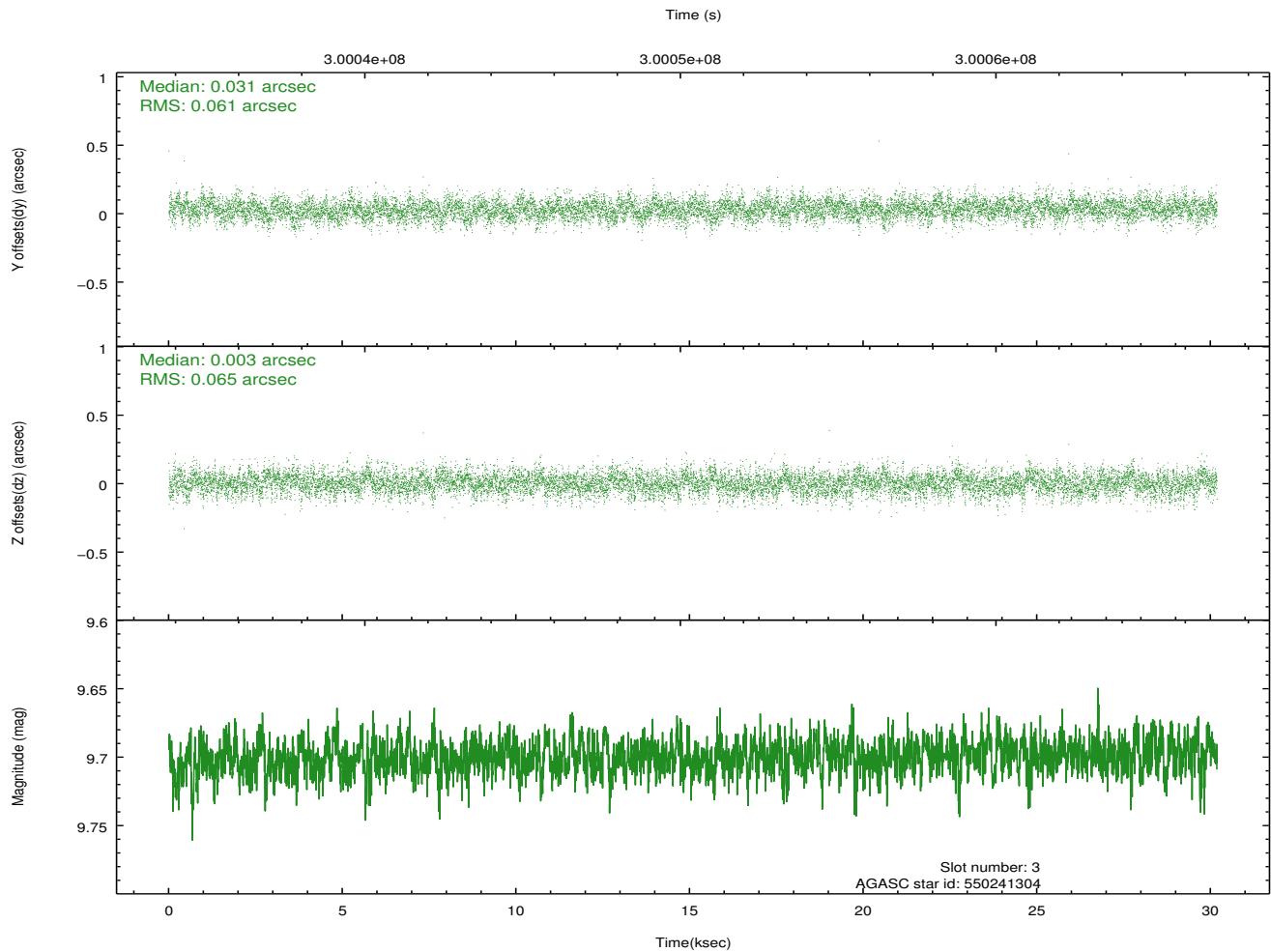
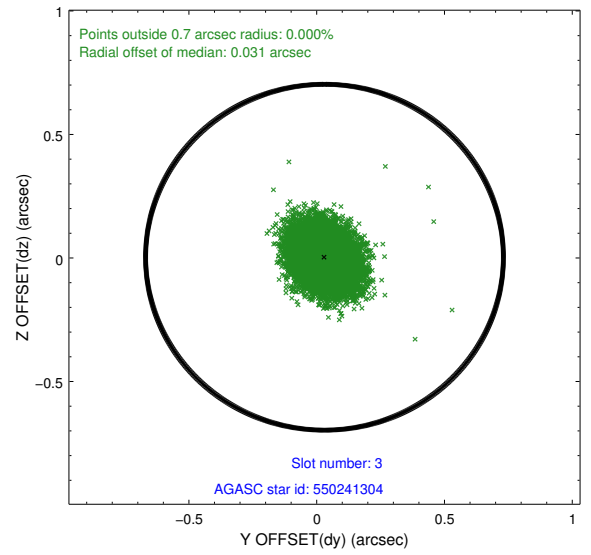
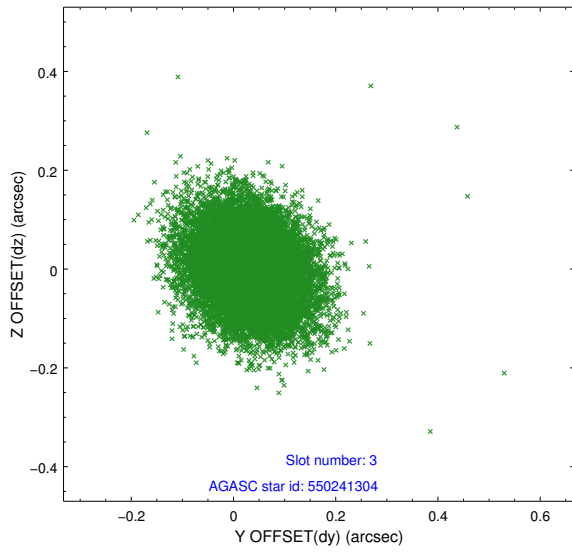


Slot Statistics

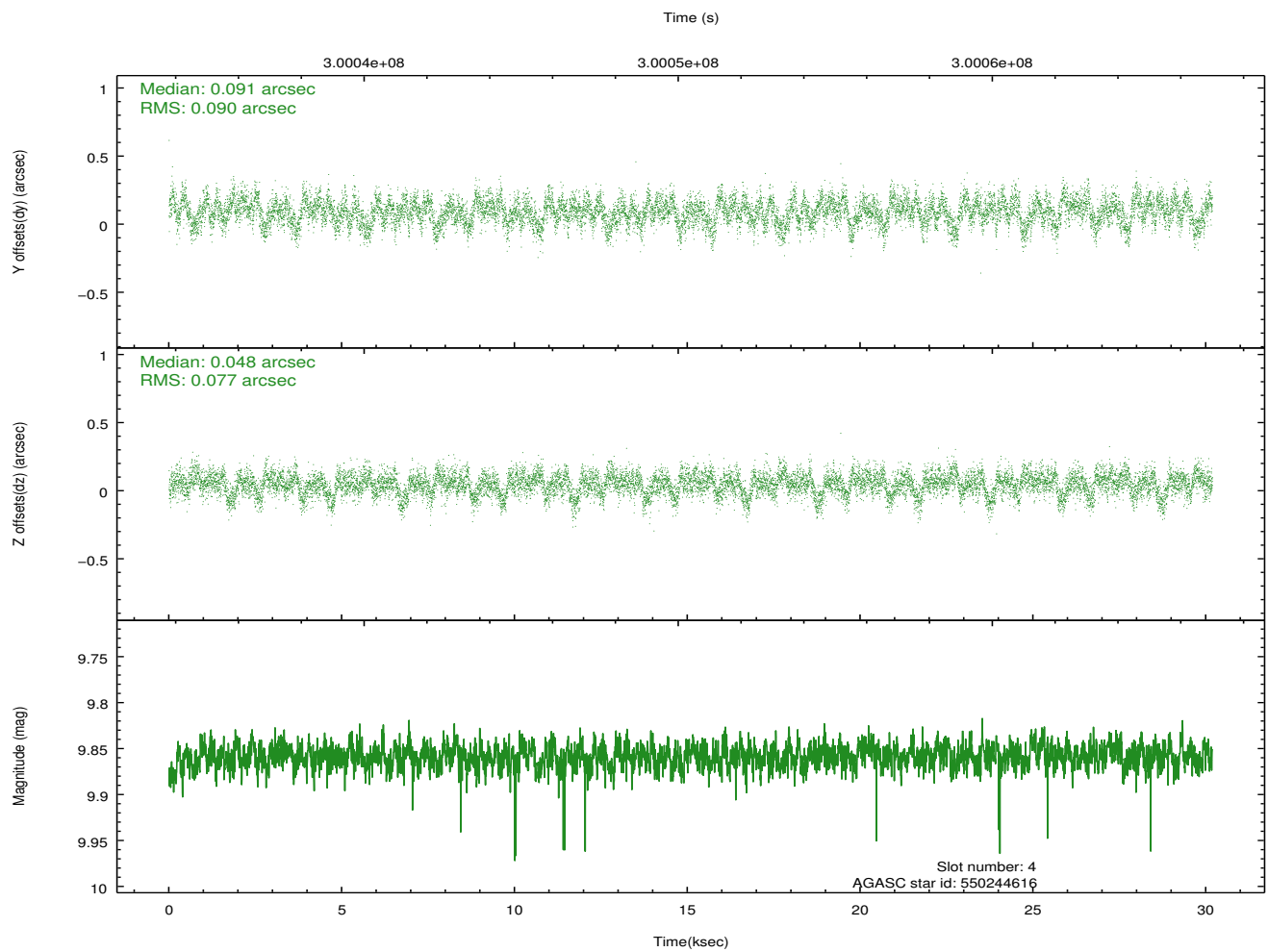
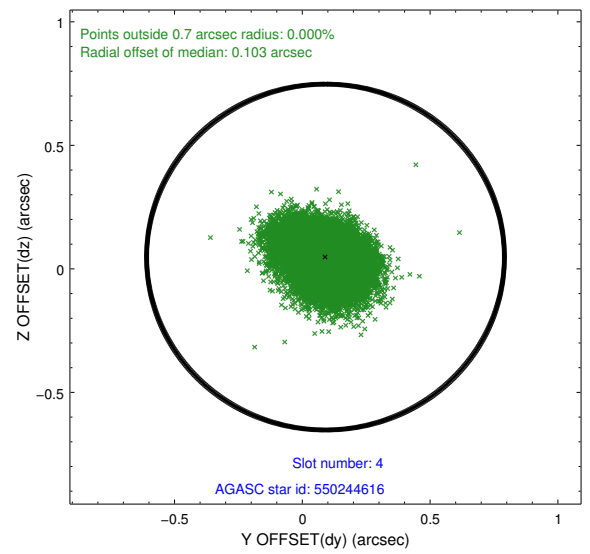
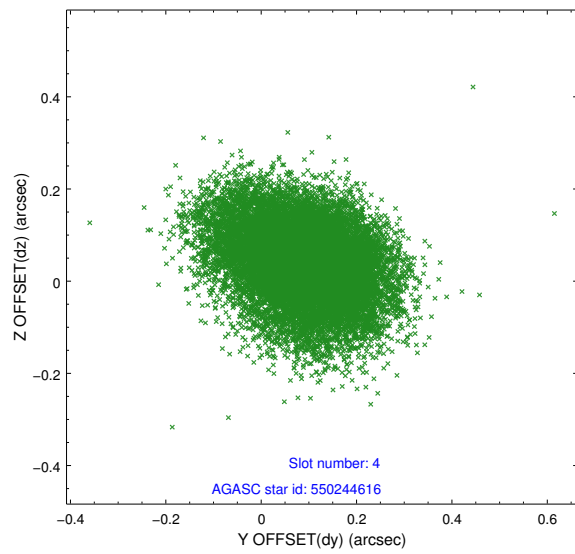
slot	status	id	mag	n_pts	med_dy	med_dz	dr1	dr2	ra	dec	mean_y	mean_z
0	FID	ACIS-I-1	7.23	7362	0.036	-0.027	0.015	0.030	0.000000	0.000000	928.37	-828.98
1	FID	ACIS-I-5	7.23	7362	-0.187	0.043	0.011	0.021	0.000000	0.000000	-1819.91	1068.56
2	FID	ACIS-I-6	7.24	7361	0.060	0.056	0.010	0.016	0.000000	0.000000	393.88	1713.15
3	GUIDE	550241304	9.70	14699	0.031	0.003	0.094	0.155	258.006646	60.460453	804.10	-1399.88
4	GUIDE	550244616	9.86	14698	0.091	0.048	0.125	0.208	257.921633	60.083964	1496.78	-224.98
5	GUIDE	550246584	9.20	14713	-0.032	0.051	0.125	0.183	259.250299	60.778821	-1667.47	-1572.51
6	GUIDE	550249320	8.35	14719	0.024	-0.012	0.060	0.098	259.166381	60.646604	-1345.24	-1192.55
7	GUIDE	550254760	6.16	14724	-0.104	-0.090	0.068	0.108	259.122492	60.670614	-1307.81	-1302.71

2.4 Star Slots

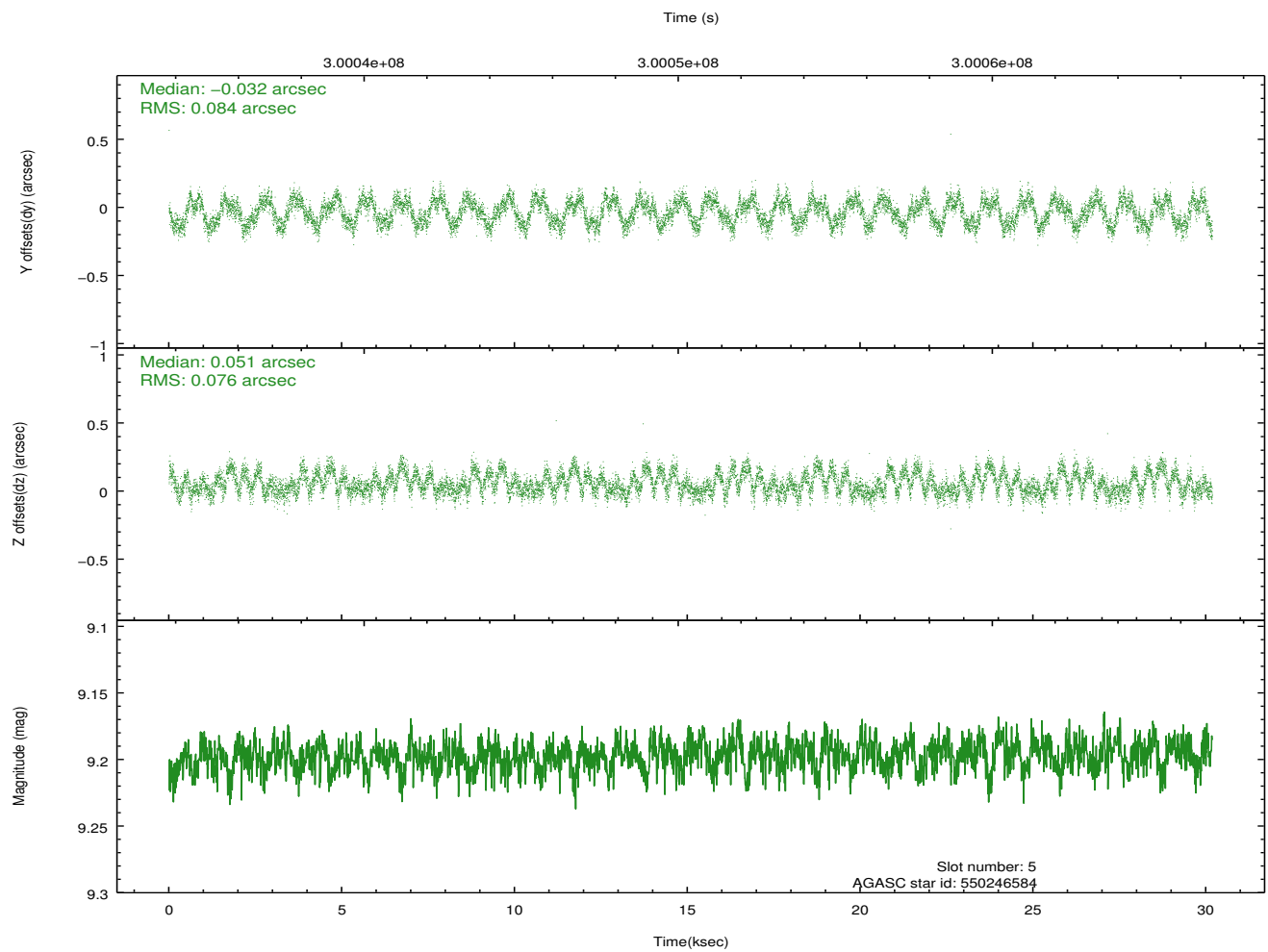
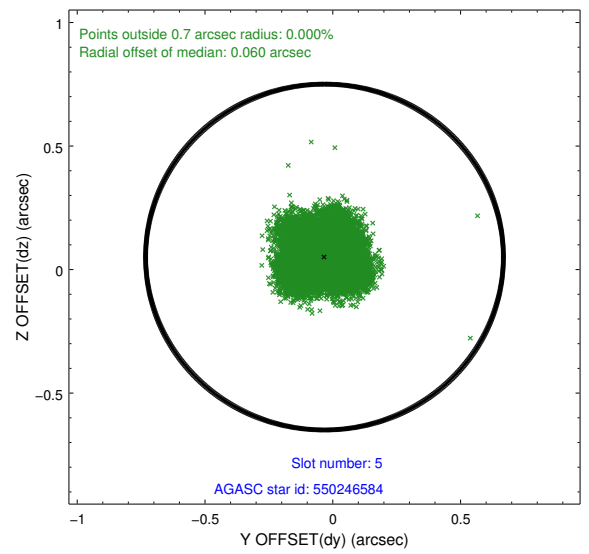
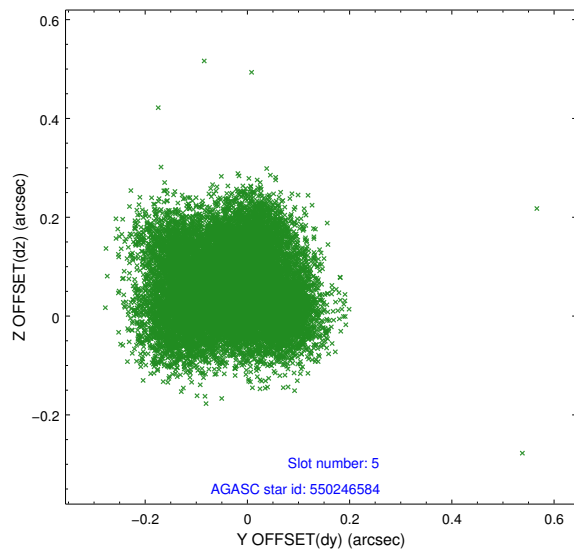
2.4.1 Slot 3



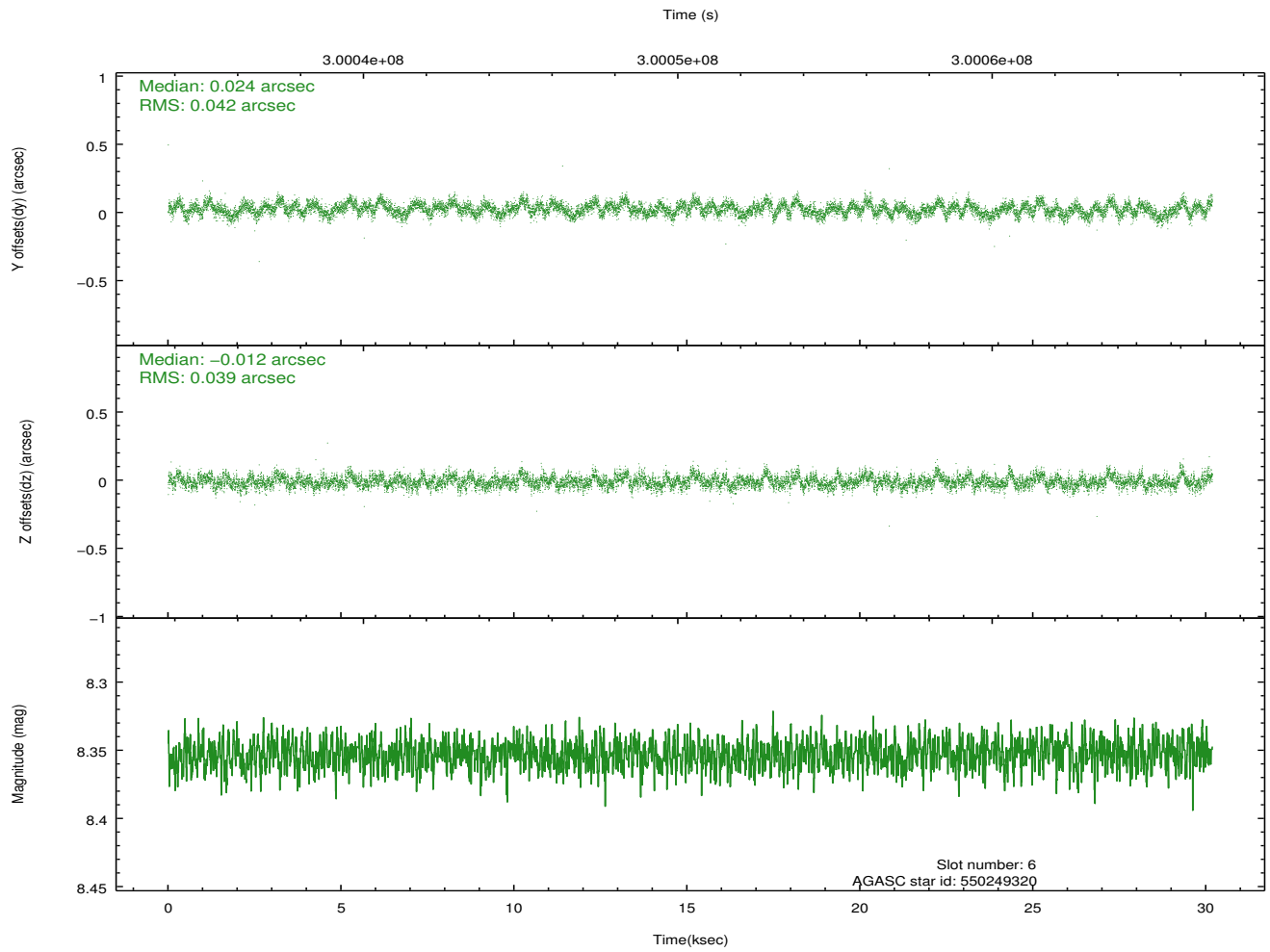
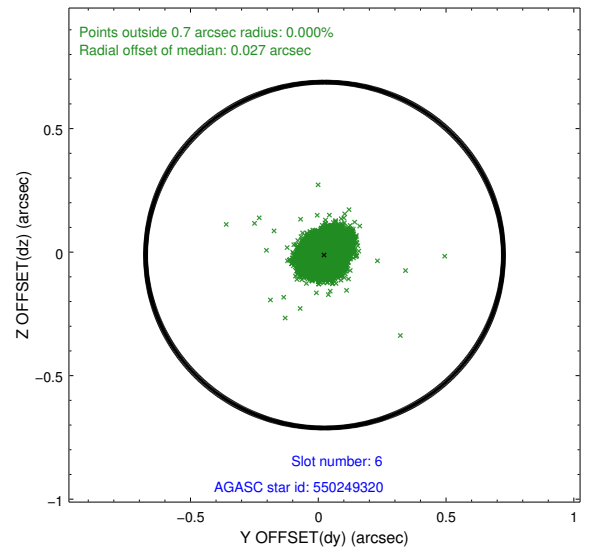
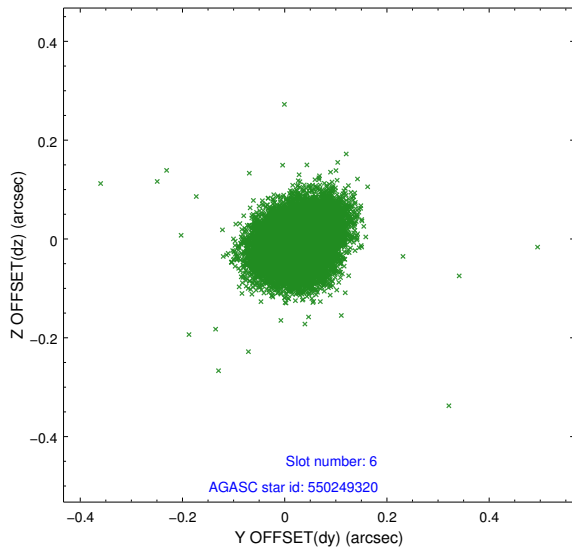
2.4.2 Slot 4



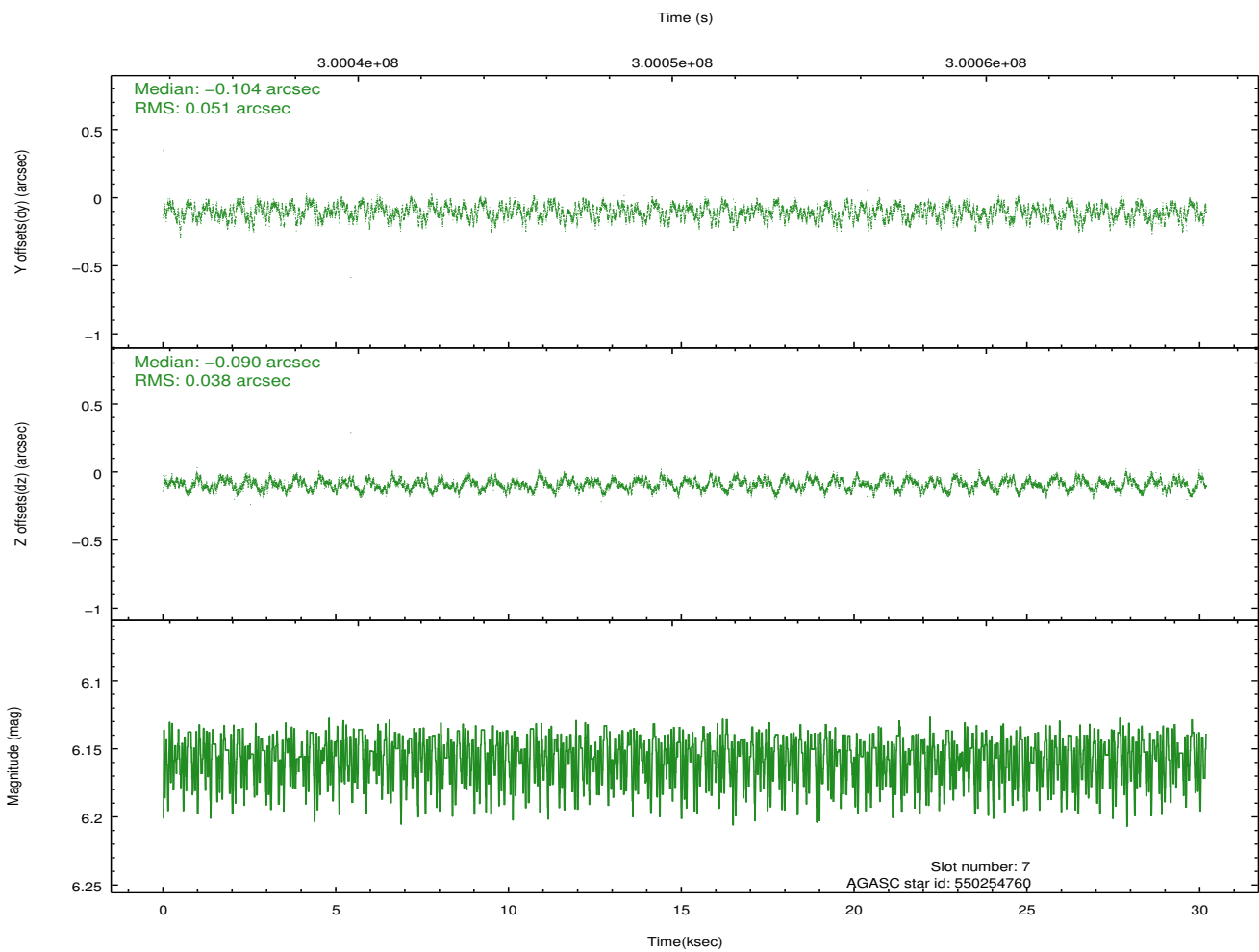
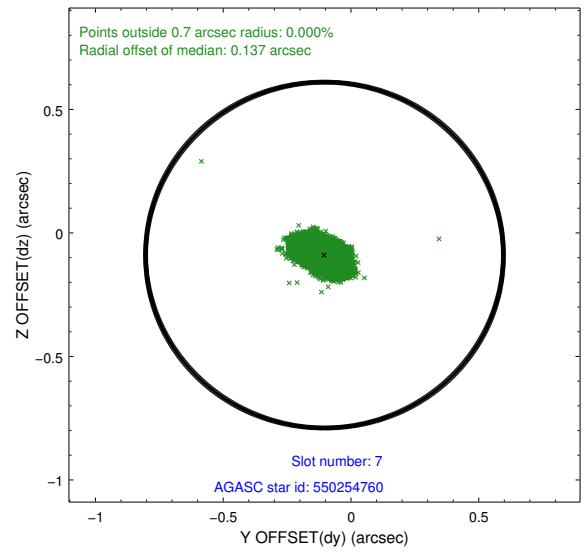
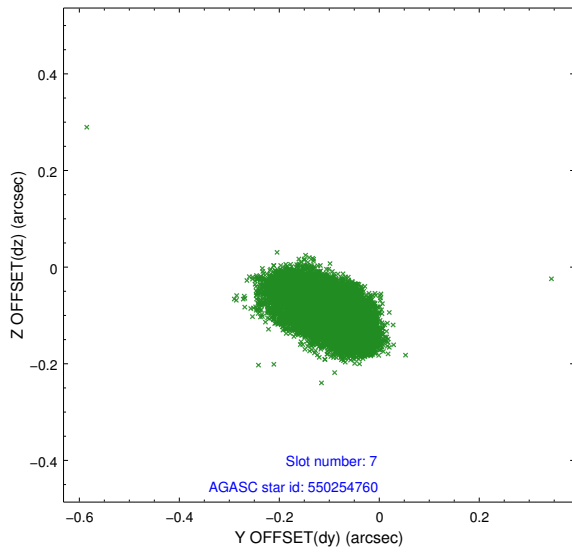
2.4.3 Slot 5



2.4.4 Slot 6

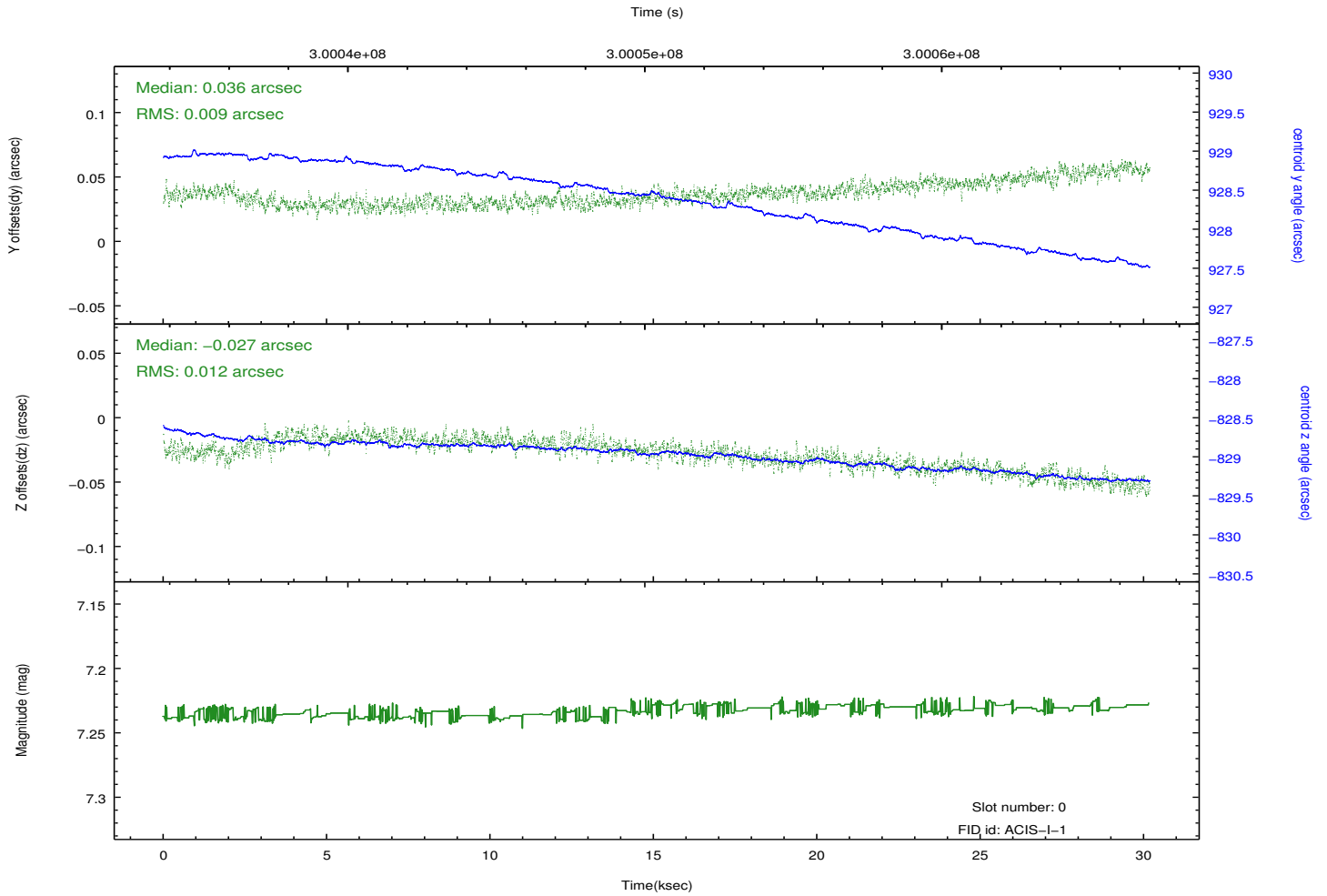
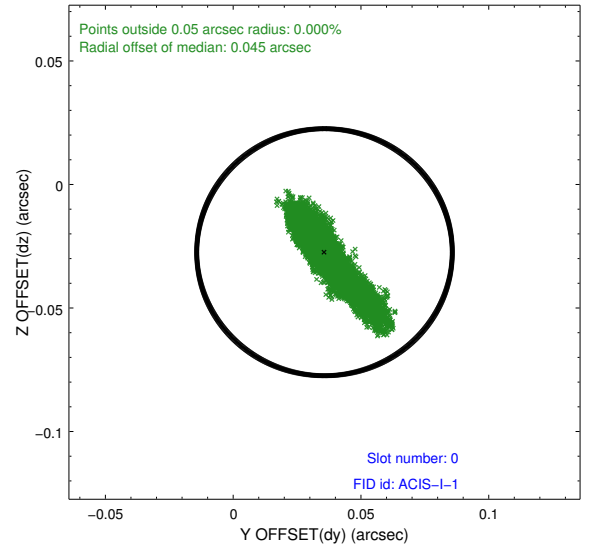
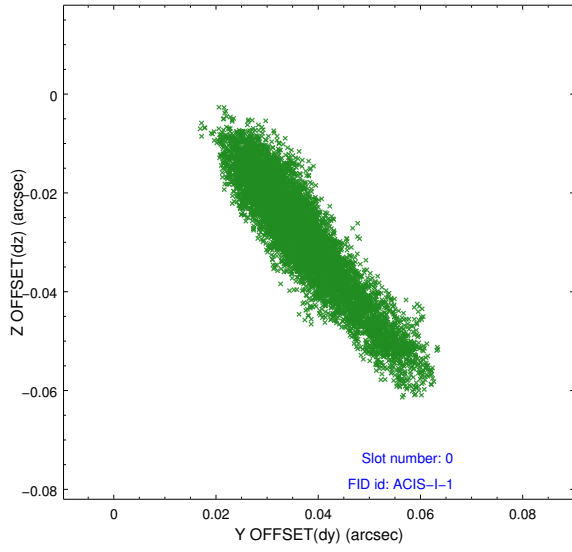


2.4.5 Slot 7

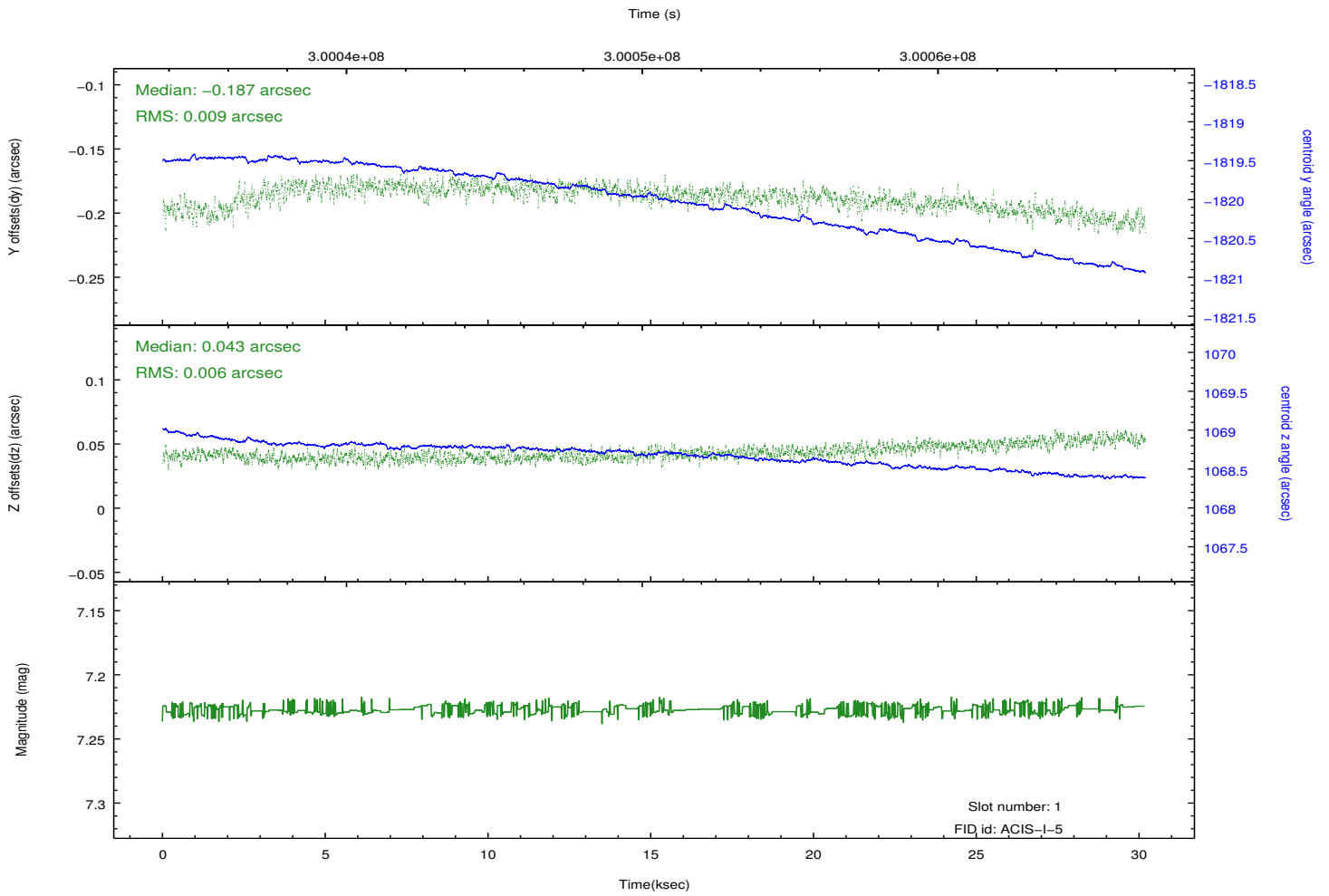
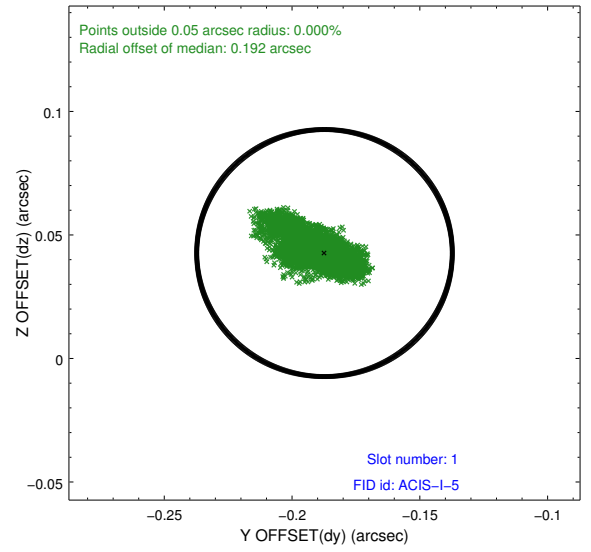
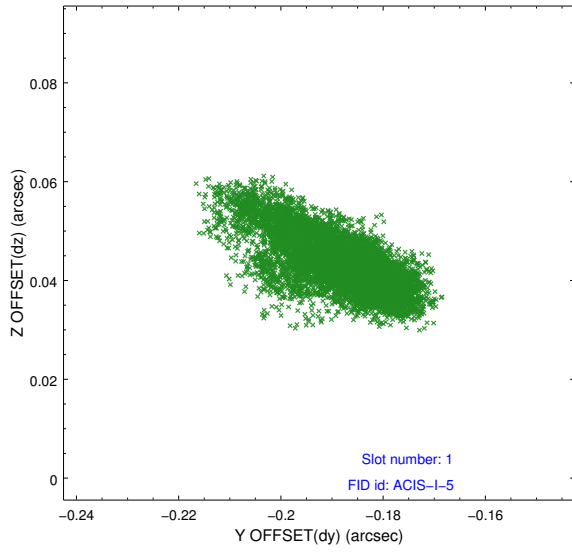


2.5 FID Slots

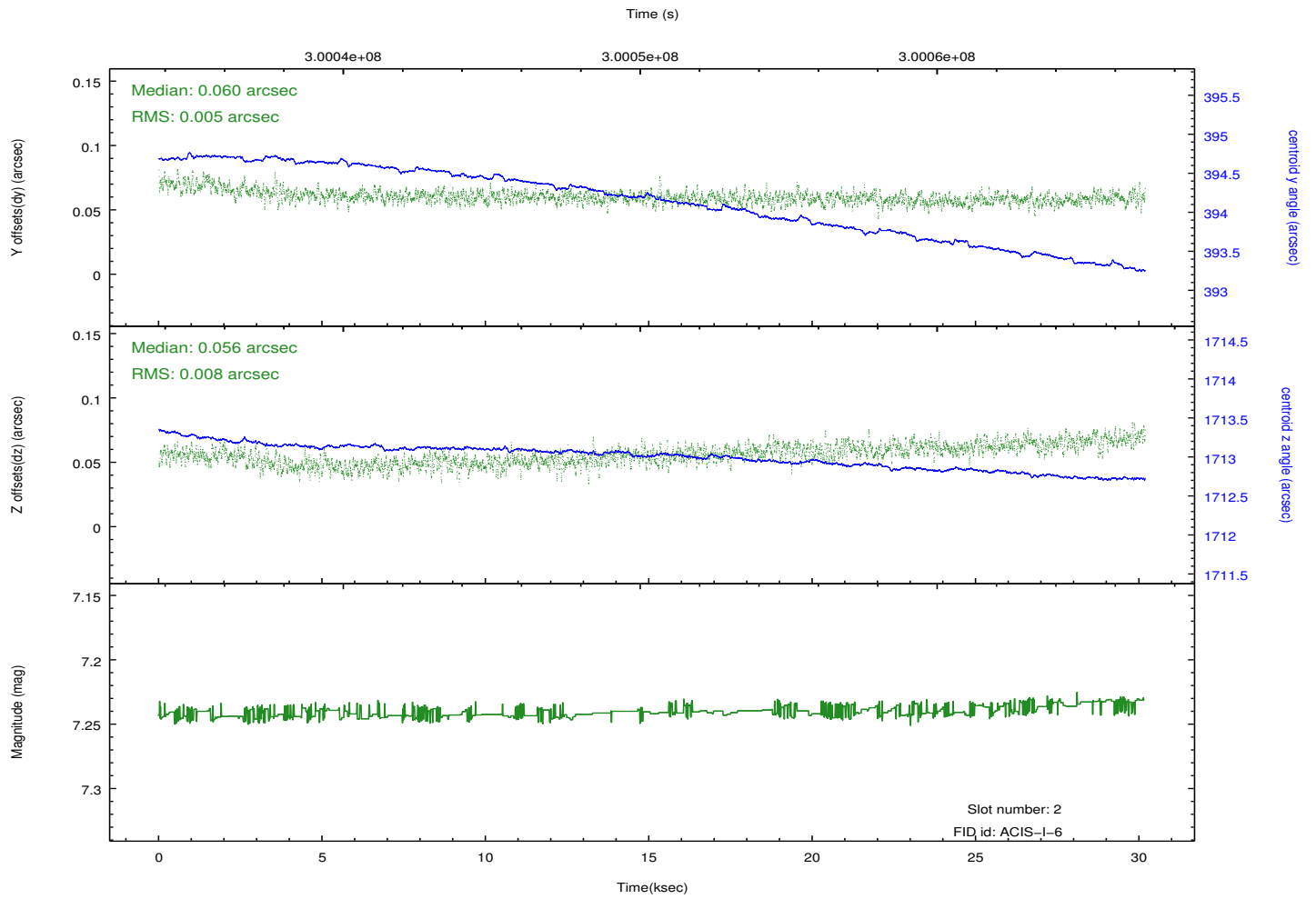
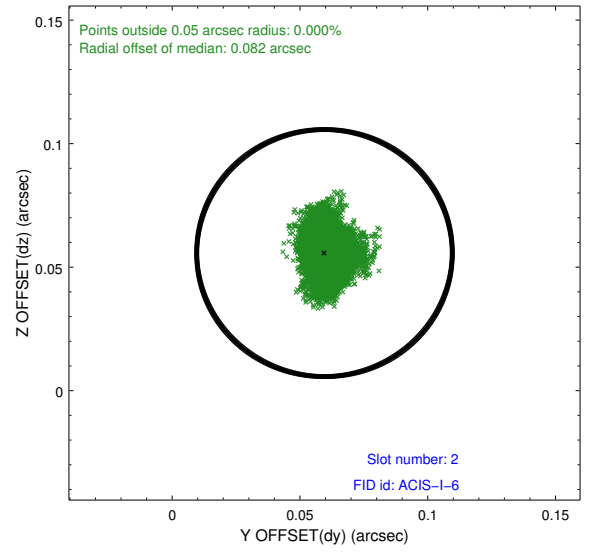
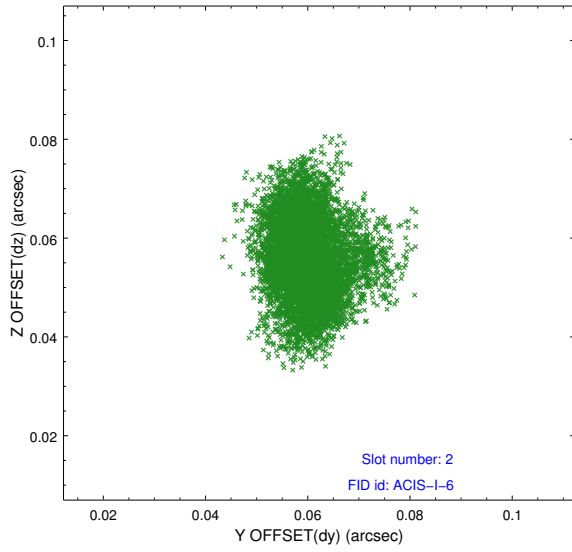
2.5.1 Slot 0



2.5.2 Slot 1



2.5.3 Slot 2



A Summary

A.1 Status

V&V Scientist	Jen Lauer
V&V Date (YYYY-MM-DD)	2012.04.30
V&V Edition	1
V&V Disposition and Status	OK
V&V Charge Time	30.044636

A.2 Comments