

# V&V Reference Report

## L2 ASCDS Version : 8.4.4

Observation 8174 - L2 Version 3  
Chandra X-Ray Center

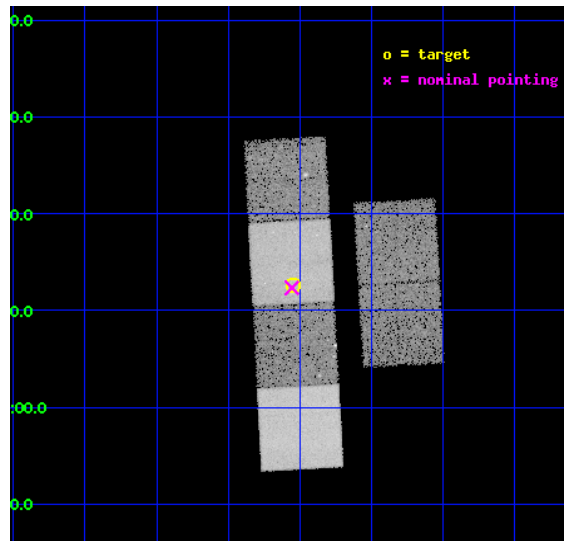
L2 Processing Date : Apr 22 2012

## Contents

<b>1</b>	<b>Front</b>	<b>2</b>
<b>2</b>	<b>OBI</b>	<b>3</b>
2.1	OBI . . . . .	3
2.1.1	Images . . . . .	3
2.1.2	Bias . . . . .	3
2.1.3	Parameters . . . . .	4
2.1.4	Events . . . . .	4
2.2	Compared Parameters . . . . .	5
2.3	Aspect . . . . .	6
2.4	Star Slots . . . . .	9
2.4.1	Slot 3 . . . . .	9
2.4.2	Slot 4 . . . . .	10
2.4.3	Slot 5 . . . . .	11
2.4.4	Slot 6 . . . . .	12
2.4.5	Slot 7 . . . . .	13
2.5	FID Slots . . . . .	14
2.5.1	Slot 0 . . . . .	14
2.5.2	Slot 1 . . . . .	15
2.5.3	Slot 2 . . . . .	16
<b>A</b>	<b>Summary</b>	<b>17</b>
A.1	Status . . . . .	17
A.2	Comments . . . . .	17

# 1 Front

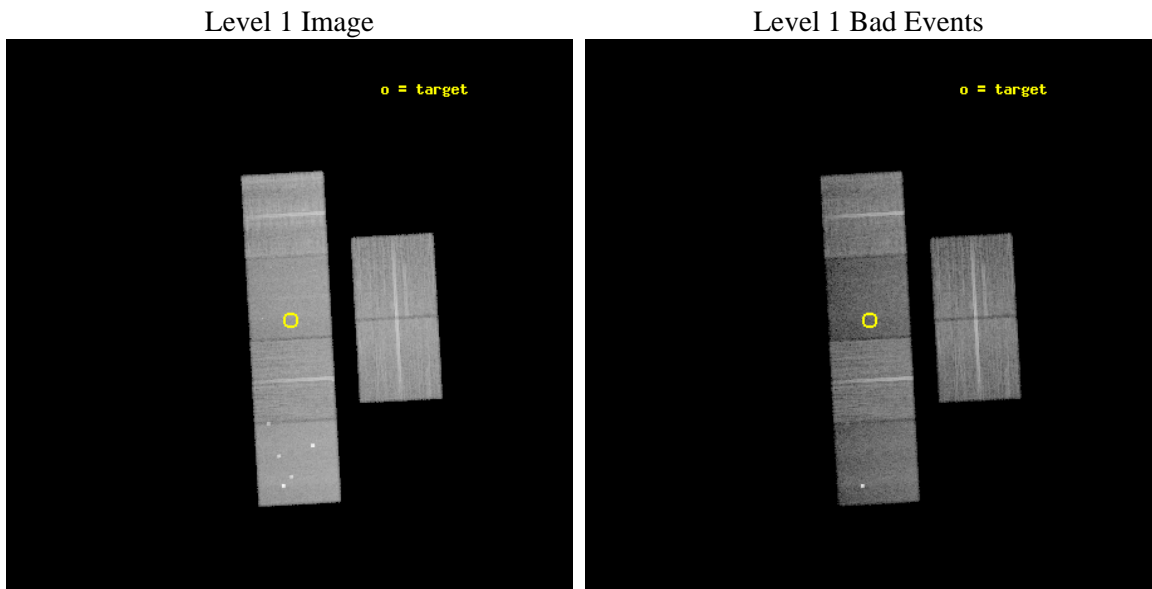
seq_num	600611	Sequence number
obs_id	8174	Observation id
title	The Galactic Generation-X: The First Study of the X-ray Properties of Massive E+A Galaxies	Proposal title
observer	Dr. Adrienne Juett	Principal investigator
object	SDSSJ090332.77+011236.4	Source name
dtcycle	0	&#160
cycle	P	events from which exps? Prim/Second/Both
ra_targ	135.886667	Observer's specified target RA [deg]
dec_targ	1.210111	Observer's specified target Dec [deg]
ra_nom	135.8889898922	Nominal RA [deg]
dec_nom	1.2058673707288	Nominal Dec [deg]
roll_nom	266.86995782792	Nominal Roll [deg]
revision	3	Processing version of data
ontime	20044.350964189	Sum of GTIs [s]
livetime	19790.537323021	Livetime [s]
ontime2	20037.910112977	Sum of GTIs [s]
ontime3	20040.986853898	Sum of GTIs [s]
ontime5	20044.309924185	Sum of GTIs [s]
ontime6	20041.027893901	Sum of GTIs [s]
ontime7	20044.350964189	Sum of GTIs [s]
ontime8	20044.186804175	Sum of GTIs [s]
l2events	201360	Number of level 2 events



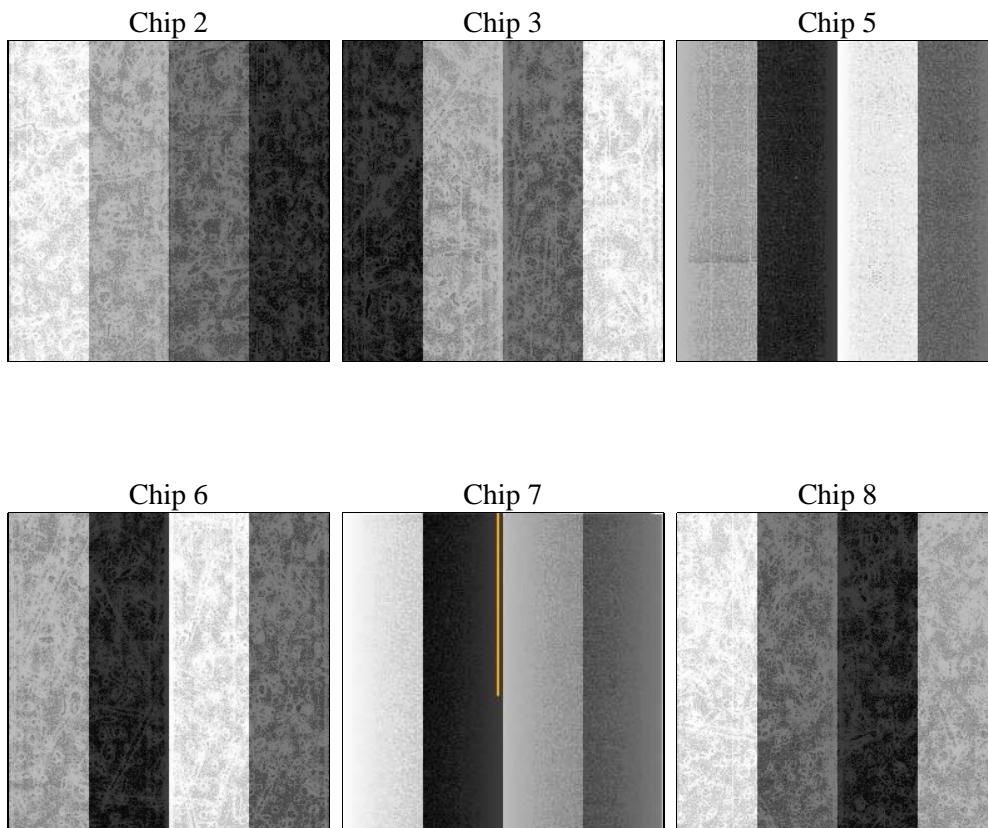
## 2 OBI

### 2.1 OBI

#### 2.1.1 Images



#### 2.1.2 Bias



### 2.1.3 Parameters

obi_num	1	Obi number	sched_exp_time	20000.000000	[s] Scheduled observation exposure time
ascdsver	8.4.4	Processing system revision	ontime	20044.350964189	Sum of GTIs [s]
caldbver	4.4.9	&#160	ontime2	20037.910112977	Sum of GTIs [s]
date	2012-04-22T04:58:06	Date and time of file creation	ontime3	20040.986853898	Sum of GTIs [s]
revision	3	Processing version of data	ontime5	20044.309924185	Sum of GTIs [s]
			ontime6	20041.027893901	Sum of GTIs [s]
			ontime7	20044.350964189	Sum of GTIs [s]
			ontime8	20044.186804175	Sum of GTIs [s]
			l1events	949770	Number of level 1 events

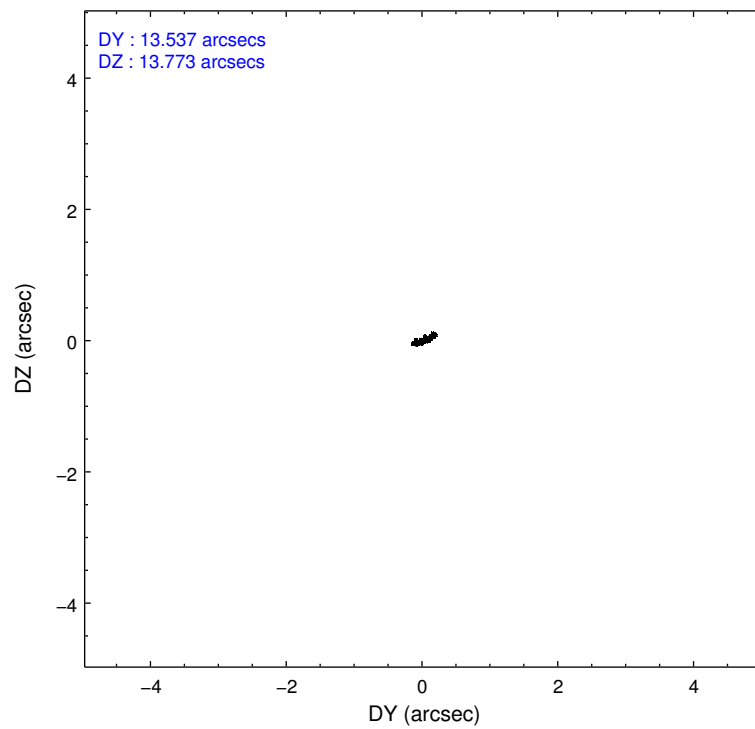
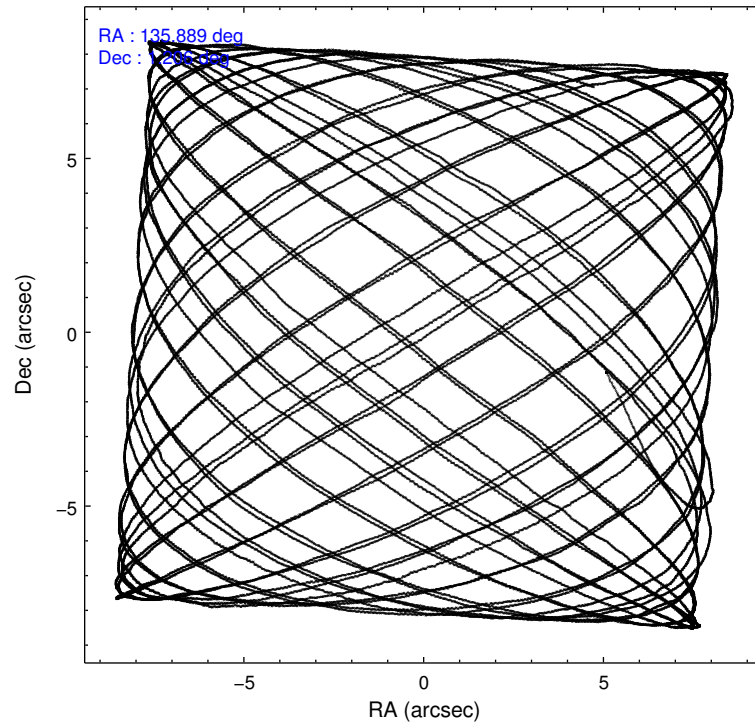
### 2.1.4 Events

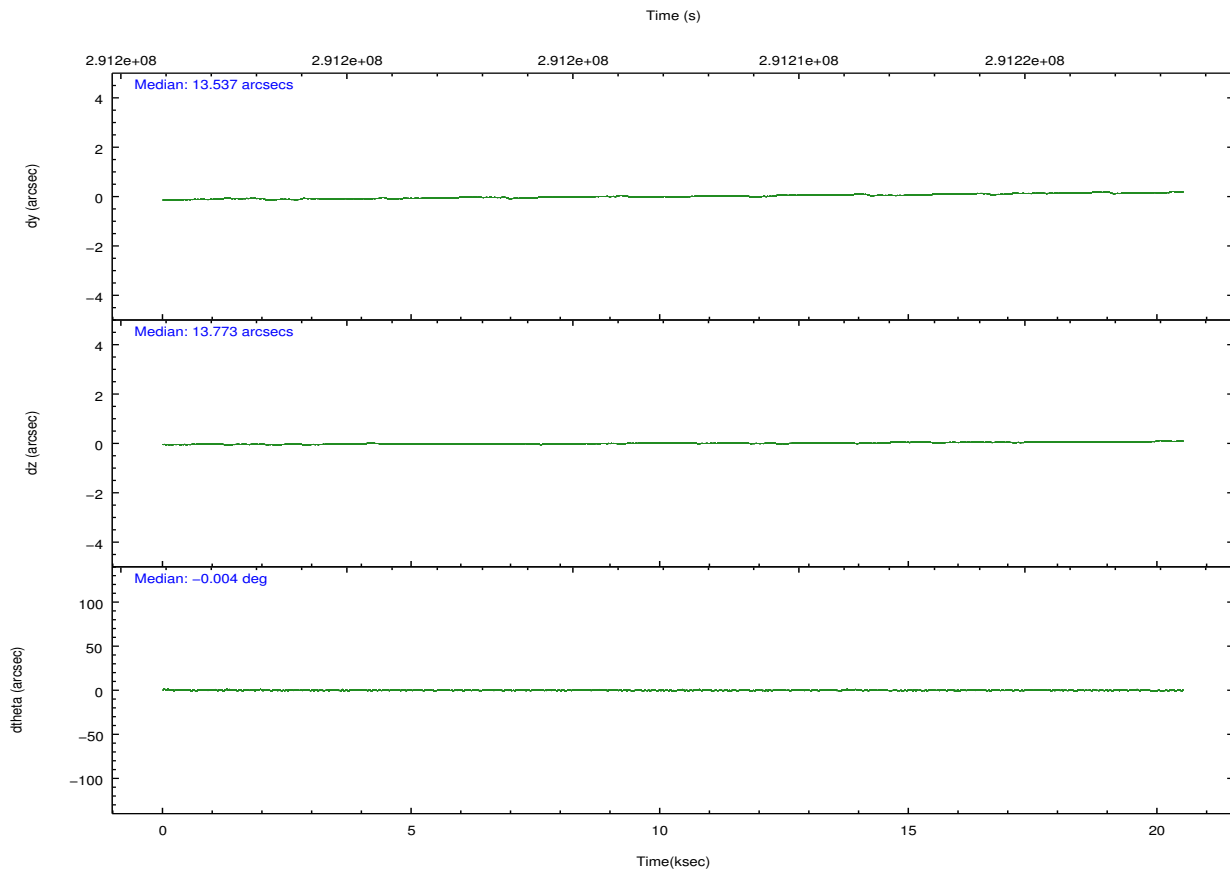
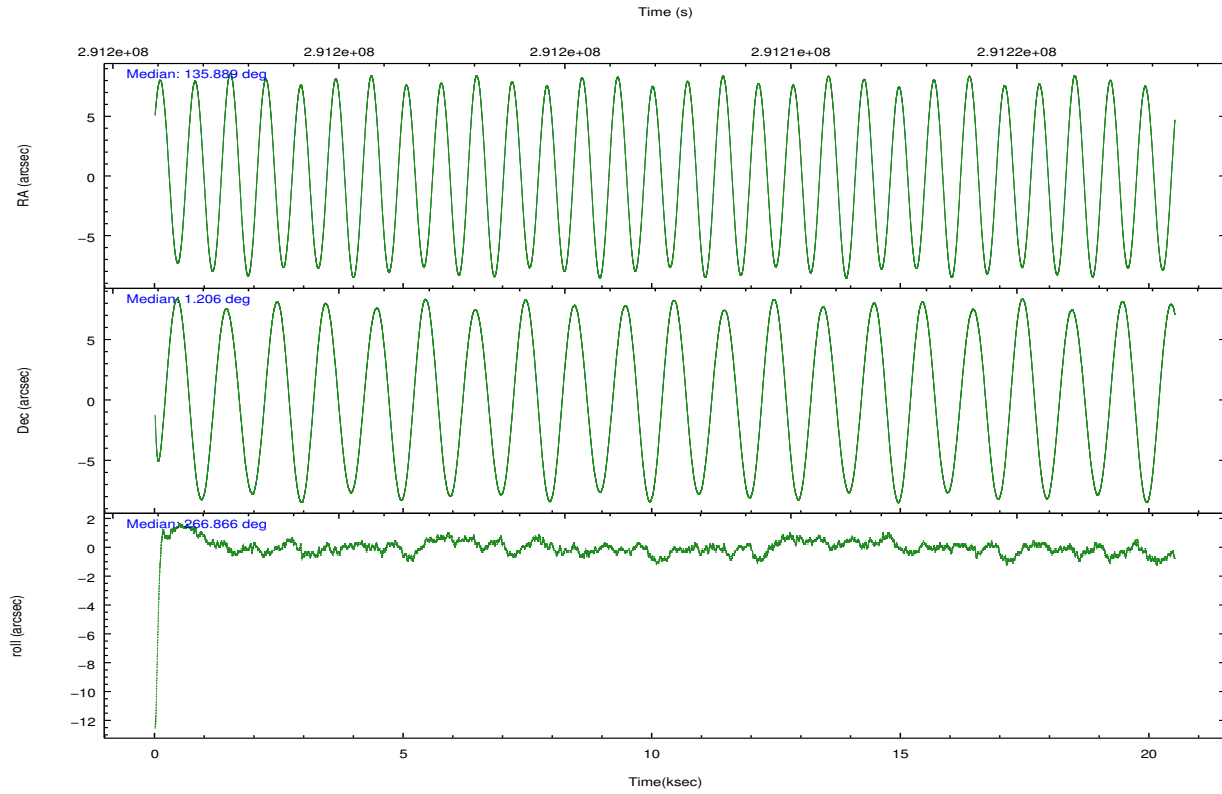
	ccd 2	ccd 3	ccd 5	ccd 6	ccd 7	ccd 8		ccd 2	ccd 3	ccd 5	ccd 6	ccd 7	ccd 8
level 1 events	158404	144040	188801	145572	137298	175655	grade 0 events	5035	4755	16177	5462	7001	11996
rejected events	144746	131179	86732	130716	69785	132810		3%	3%	8%	3%	5%	6%
rejected %	91%	91%	45%	89%	50%	75%	grade 1 events	94	86	428	76	201	127
								0%	0%	0%	0%	0%	0%
							grade 2 events	3327	2746	30102	3356	14282	10075
								2%	1%	15%	2%	10%	5%
							grade 3 events	1464	1534	4209	1582	6500	4747
								0%	1%	2%	1%	4%	2%
							grade 4 events	1466	1404	4015	1545	6456	4402
								0%	0%	2%	1%	4%	2%
							grade 5 events	4072	4878	14804	4944	14611	7463
								2%	3%	7%	3%	10%	4%
							grade 6 events	2366	2423	47575	2916	33284	11626
								1%	1%	25%	2%	24%	6%
							grade 7 events	140580	126214	71491	125691	54963	125219
								88%	87%	37%	86%	40%	71%

## 2.2 Compared Parameters

Parameter	Planned	Actual	Parameter	Planned	Actual
Instrument	ACIS	ACIS	Obspar format version number	7	7
Detector	ACIS-235678	ACIS-235678	Obspar file type	PREDICTED	ACTUAL
Grating	NONE	NONE	Obspar update status	NONE	UPDATED
Data mode	VFAINT	VFAINT	CCD I0 on	N	N
Observation mode	POINTING	POINTING	CCD I1 on	N	N
[deg] Pointing RA	135.876292	135.888989899223	CCD I2 on	O2	Y
[deg] Pointing Dec	1.230070	1.205867370728775	CCD I3 on	O3	Y
[deg] Pointing Roll	266.713605	266.8699578279241	CCD S0 on	N	N
[mm] SIM focus pos	-0.684267	-0.6828225247311905	CCD S1 on	O5	Y
[mm] SIM defocus	0	0.001444936568705701	CCD S2 on	O4	Y
[mm] SIM translation stage pos	-190.132523	-190.1400660498719	CCD S3 on	Y	Y
[mm] SIM translation stage offset	0	0.00754346686406393	CCD S4 on	O1	Y
[s] Observation start time (MET)	291197484.184000	291196315.68442	CCD S5 on	N	N
Observation start date	2007-03-25T08:10:19	2007-03-25T07:51:55	Number of optional ACIS chips dropped	0	0
[s] Observation end time (MET)	291217484.184000	291218515.13548	On-chip summing requested	N	N
Observation end date	2007-03-25T13:43:39	2007-03-25T14:01:55	Subarray requested	NONE	NONE
Read mode	TIMED	TIMED	Alternating exposures requested	N	N
			[s] Primary exposure time	0.000000	3.2

## 2.3 Aspect



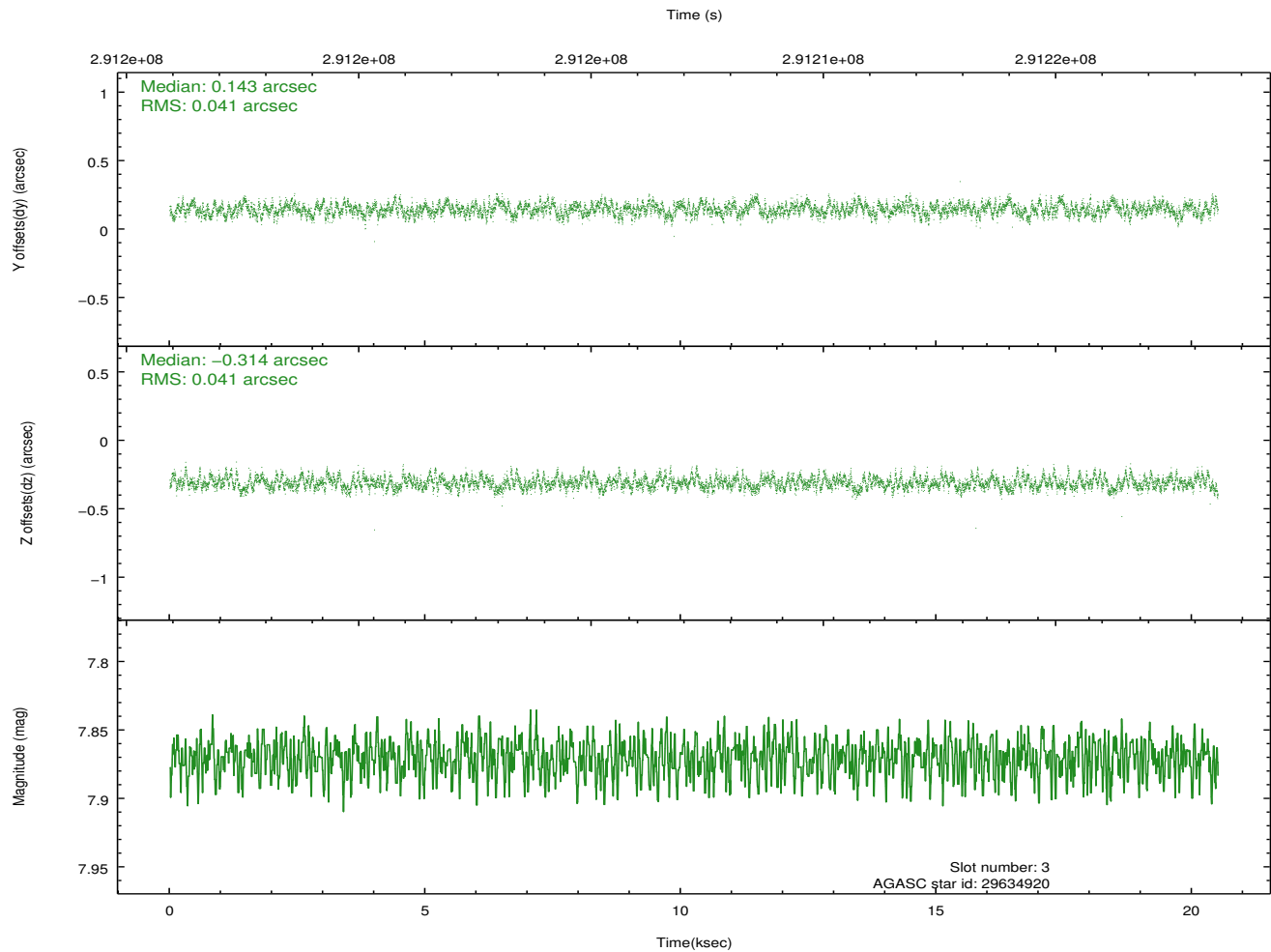
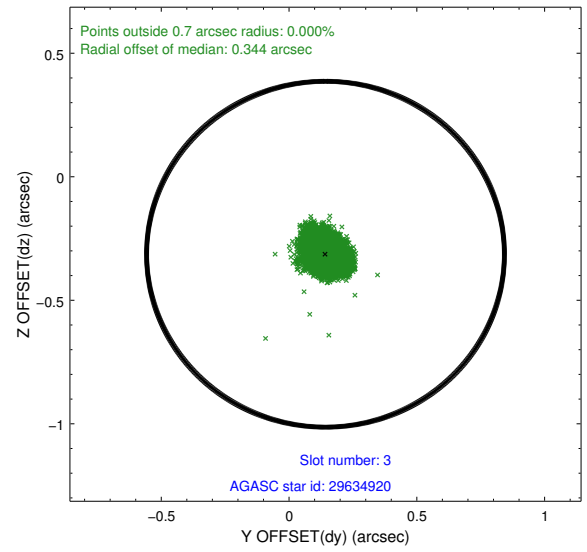
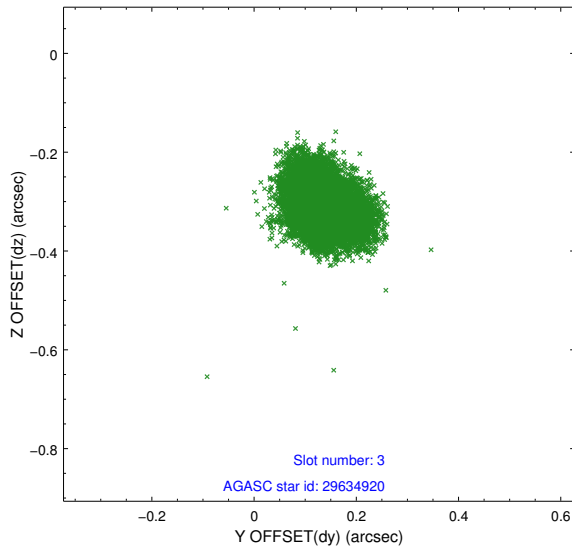


### Slot Statistics

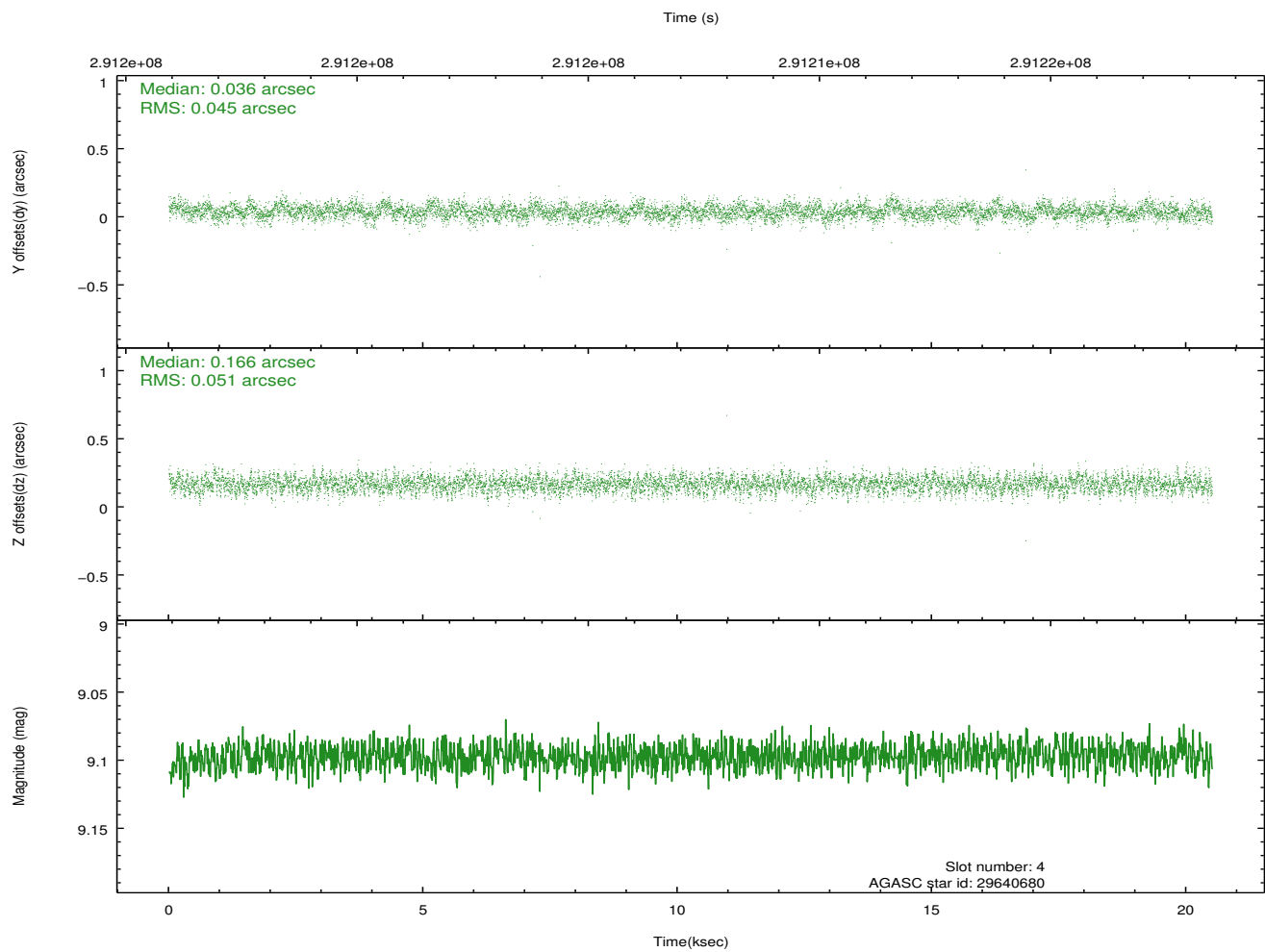
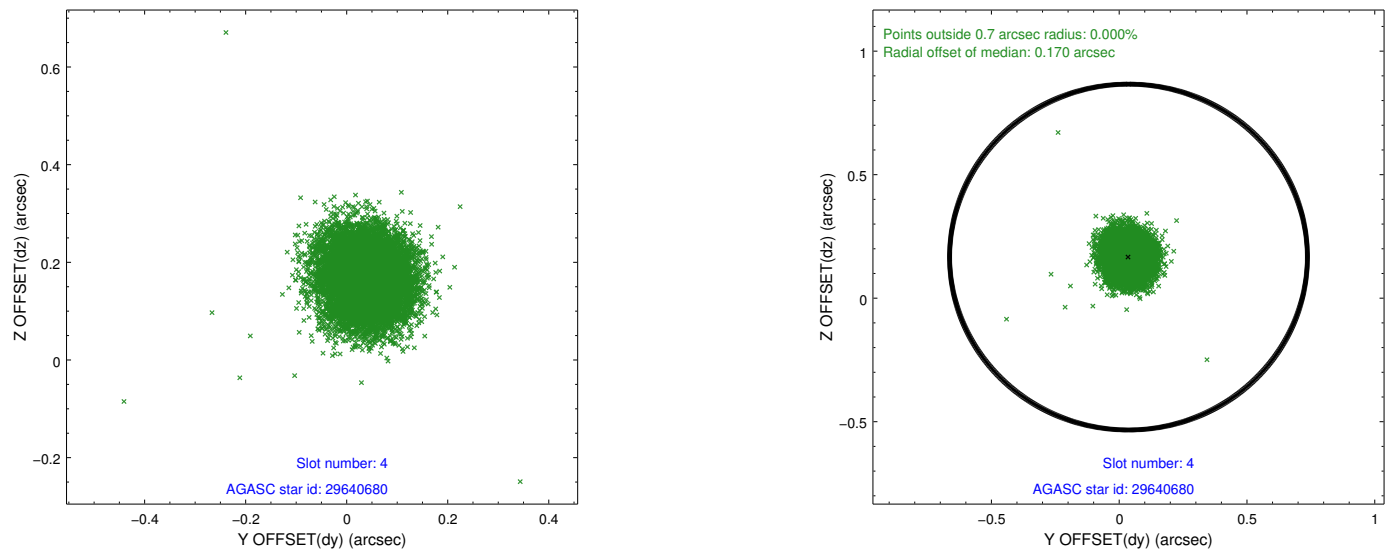
slot	status	id	mag	n_pts	med_dy	med_dz	dr1	dr2	ra	dec	mean_y	mean_z
0	FID	ACIS-S-2	7.10	5003	-0.045	-0.069	0.008	0.013	0.000000	0.000000	-766.52	-1735.19
1	FID	ACIS-S-4	7.20	5003	0.193	0.040	0.008	0.014	0.000000	0.000000	2146.91	173.21
2	FID	ACIS-S-5	7.23	5003	-0.180	0.037	0.006	0.011	0.000000	0.000000	-1819.27	167.08
3	GUIDE	29634920	7.87	10006	0.143	-0.314	0.062	0.099	135.275889	1.280156	-55.68	-2167.86
4	GUIDE	29640680	9.10	10002	0.036	0.166	0.071	0.116	135.717672	1.470573	-831.15	-619.44
5	GUIDE	29640728	8.38	10003	0.011	0.197	0.056	0.089	136.257184	1.026999	651.40	1411.00
6	GUIDE	29641768	7.81	10006	0.045	0.038	0.070	0.107	136.165724	0.918821	1059.32	1104.78
7	GUIDE	29628504	9.07	10002	-0.238	-0.092	0.078	0.125	135.296274	1.922892	-2370.35	-2226.59

## 2.4 Star Slots

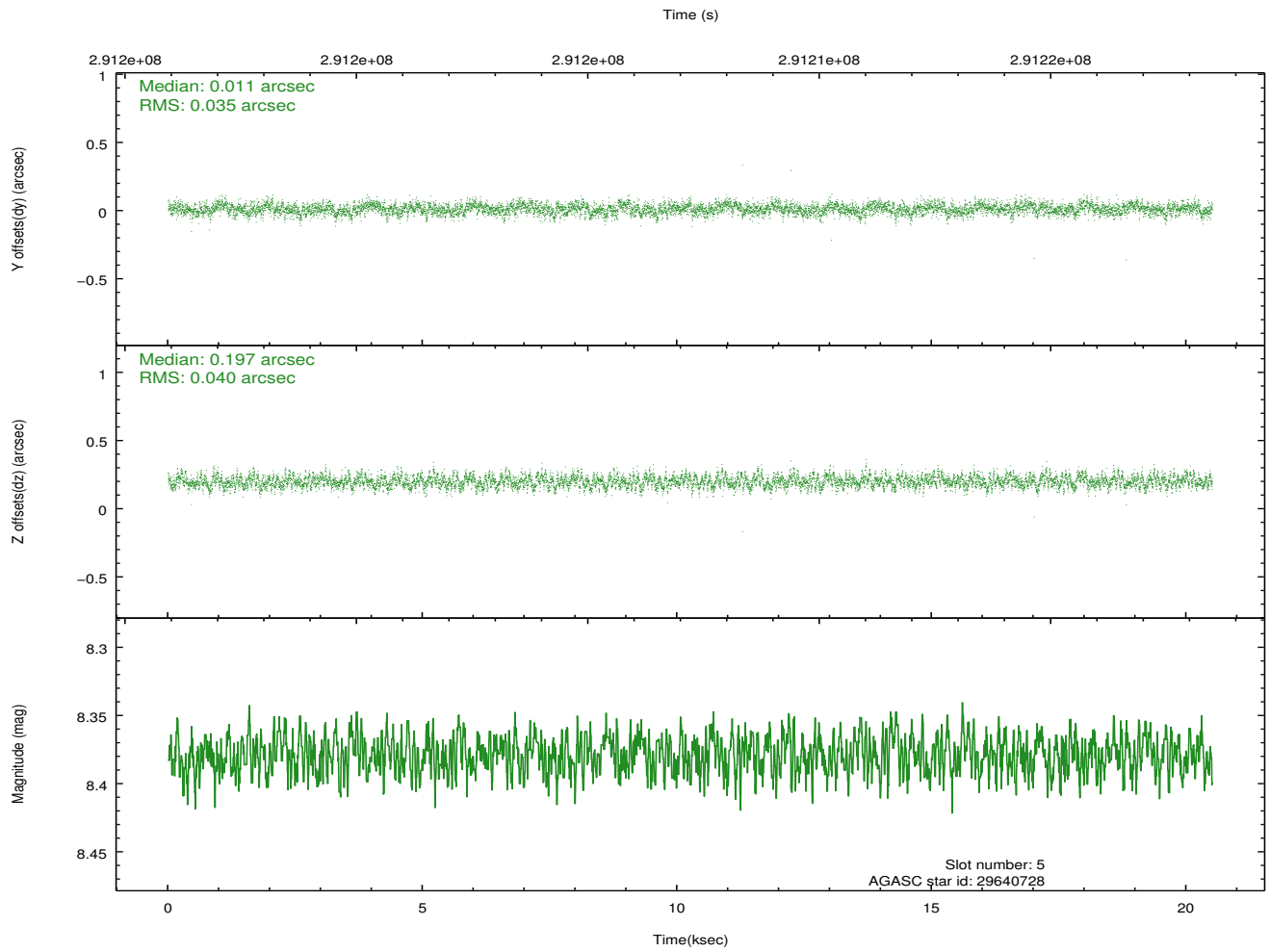
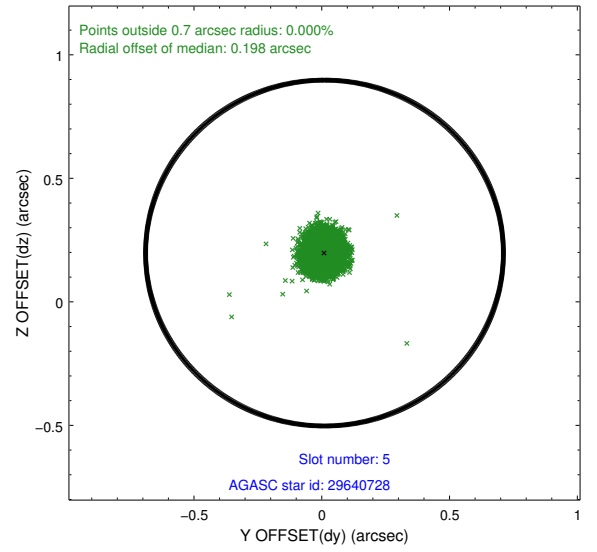
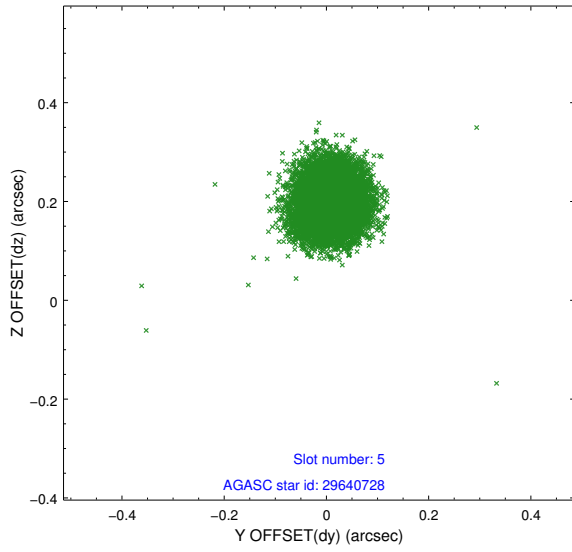
### 2.4.1 Slot 3



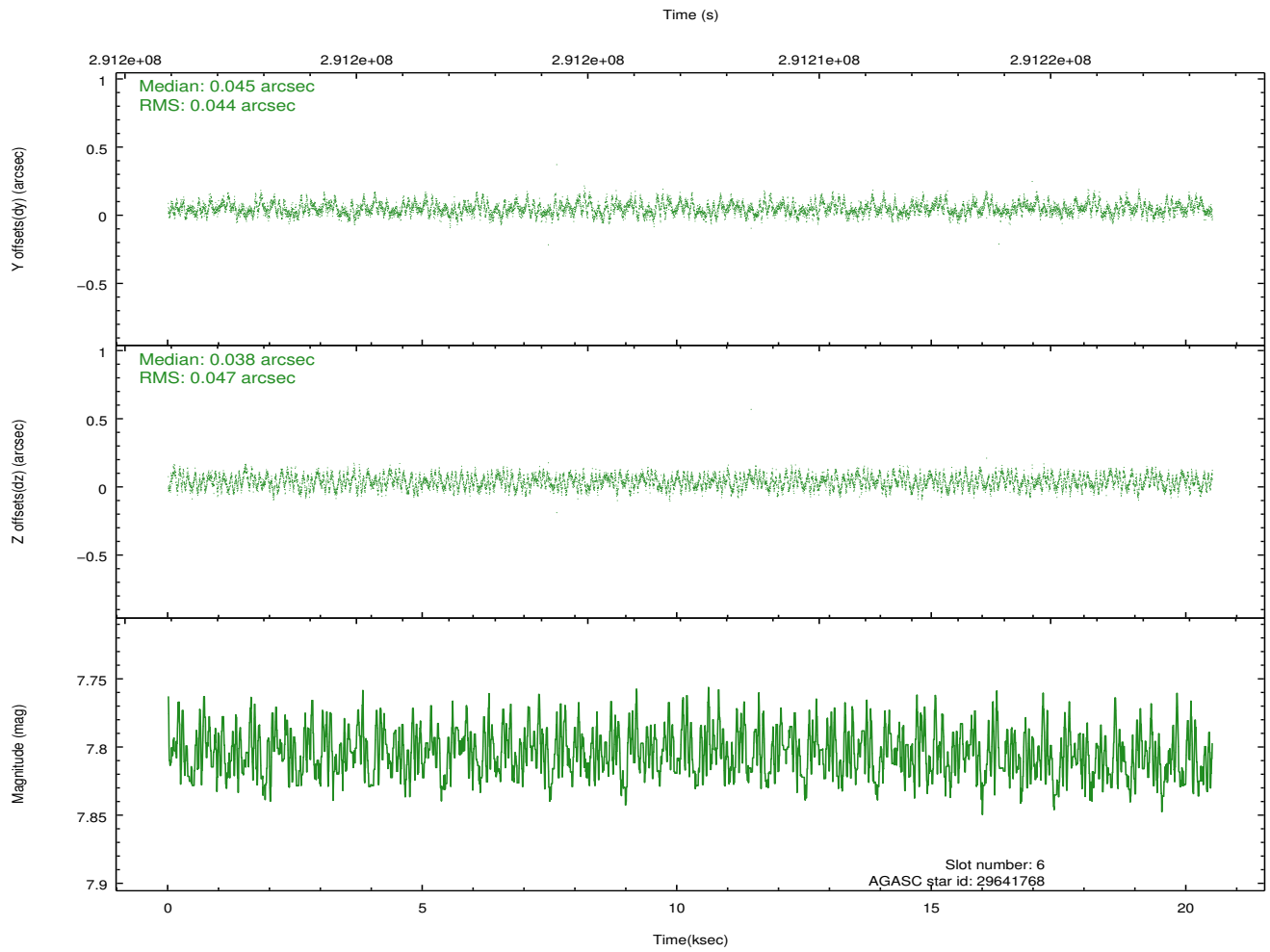
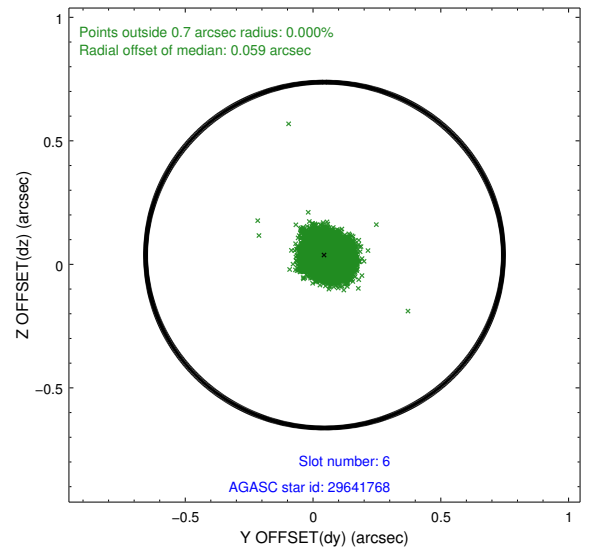
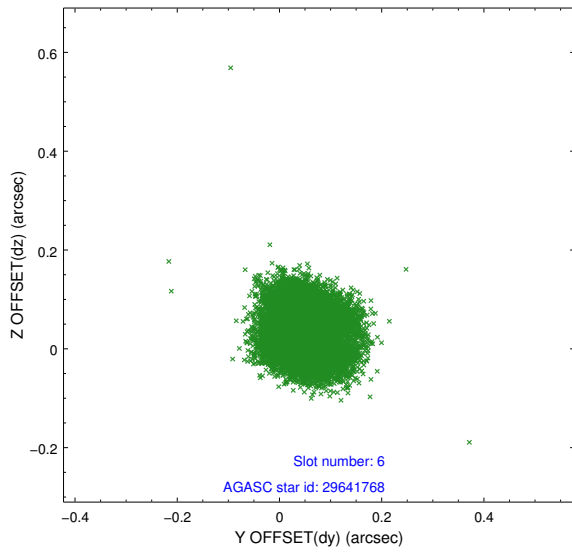
## 2.4.2 Slot 4



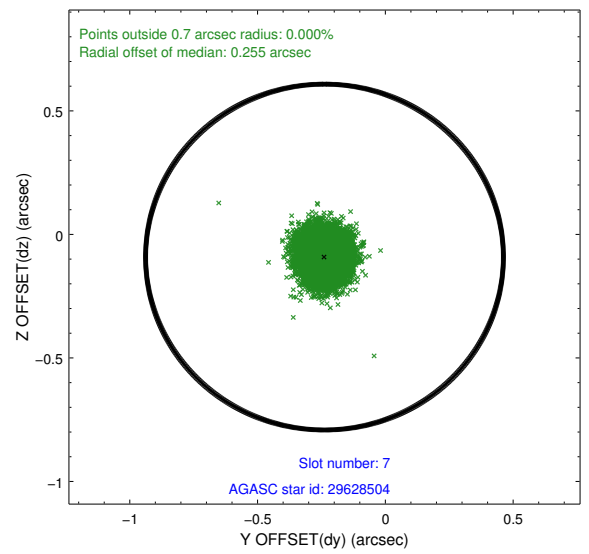
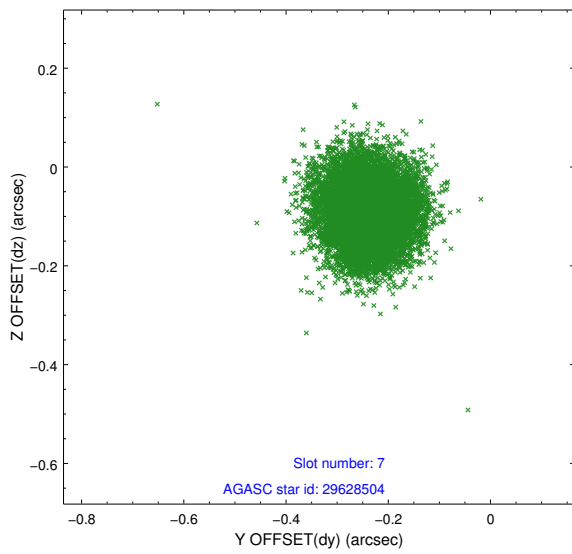
### 2.4.3 Slot 5



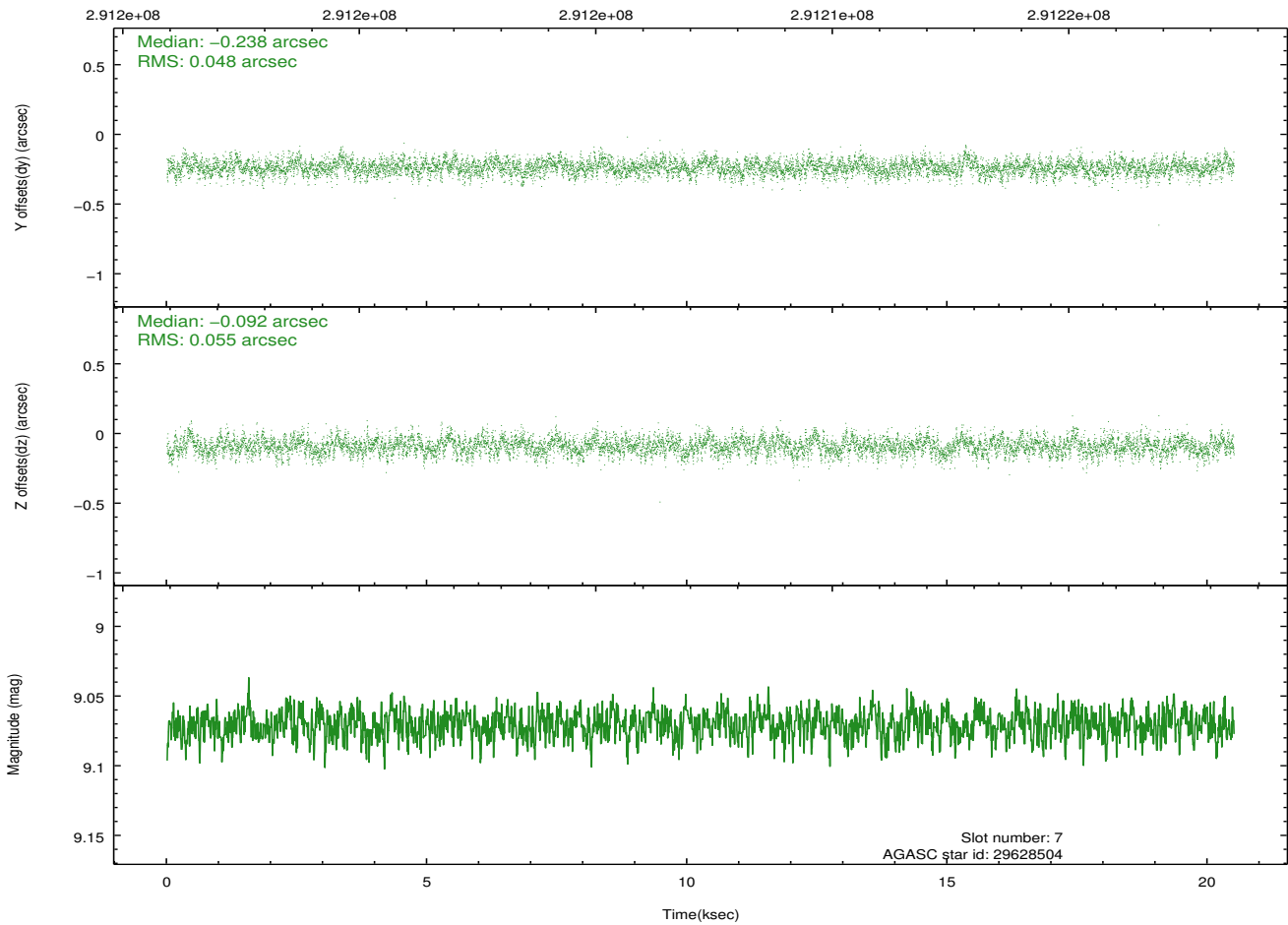
### 2.4.4 Slot 6



## 2.4.5 Slot 7

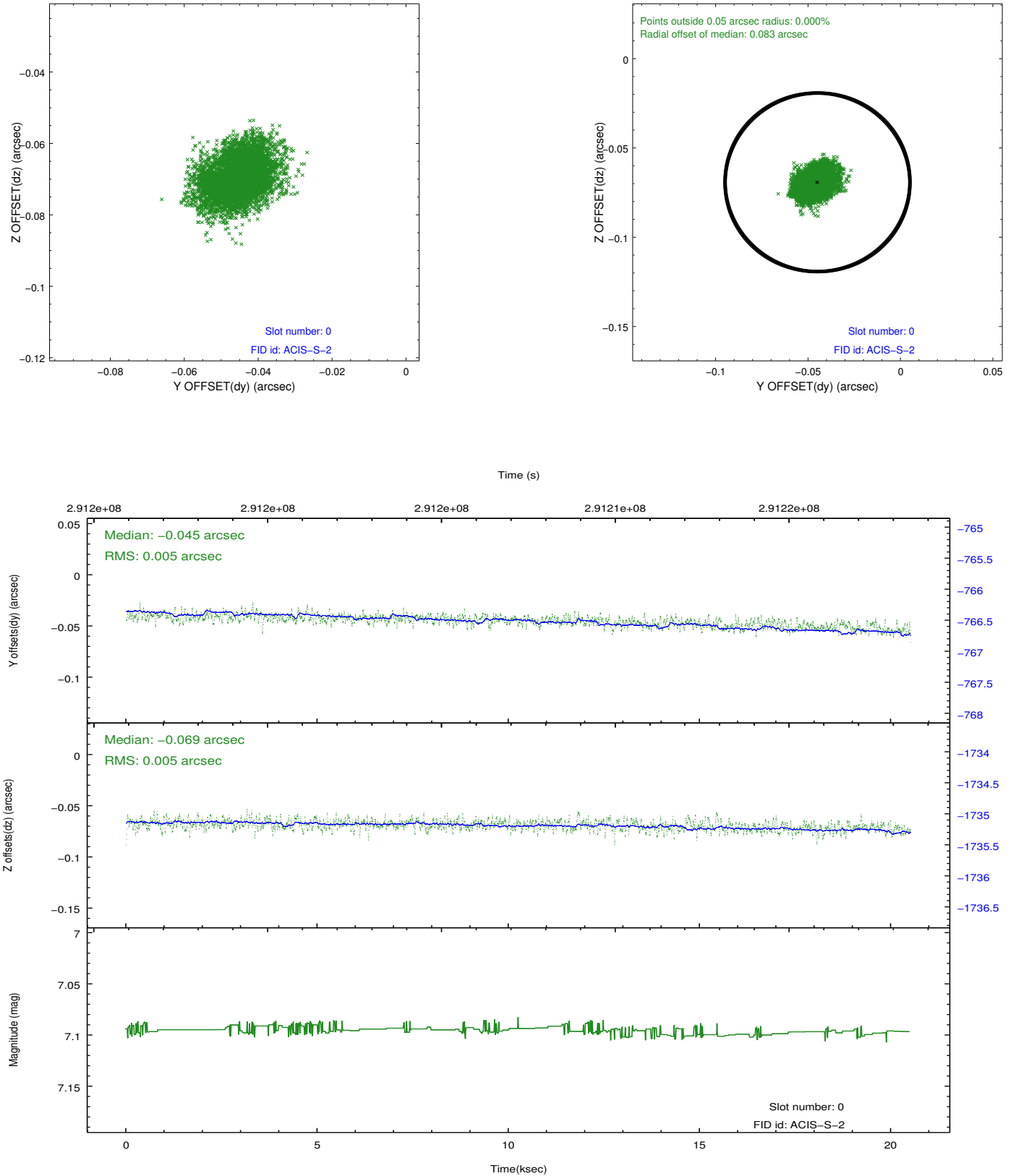


Time (s)

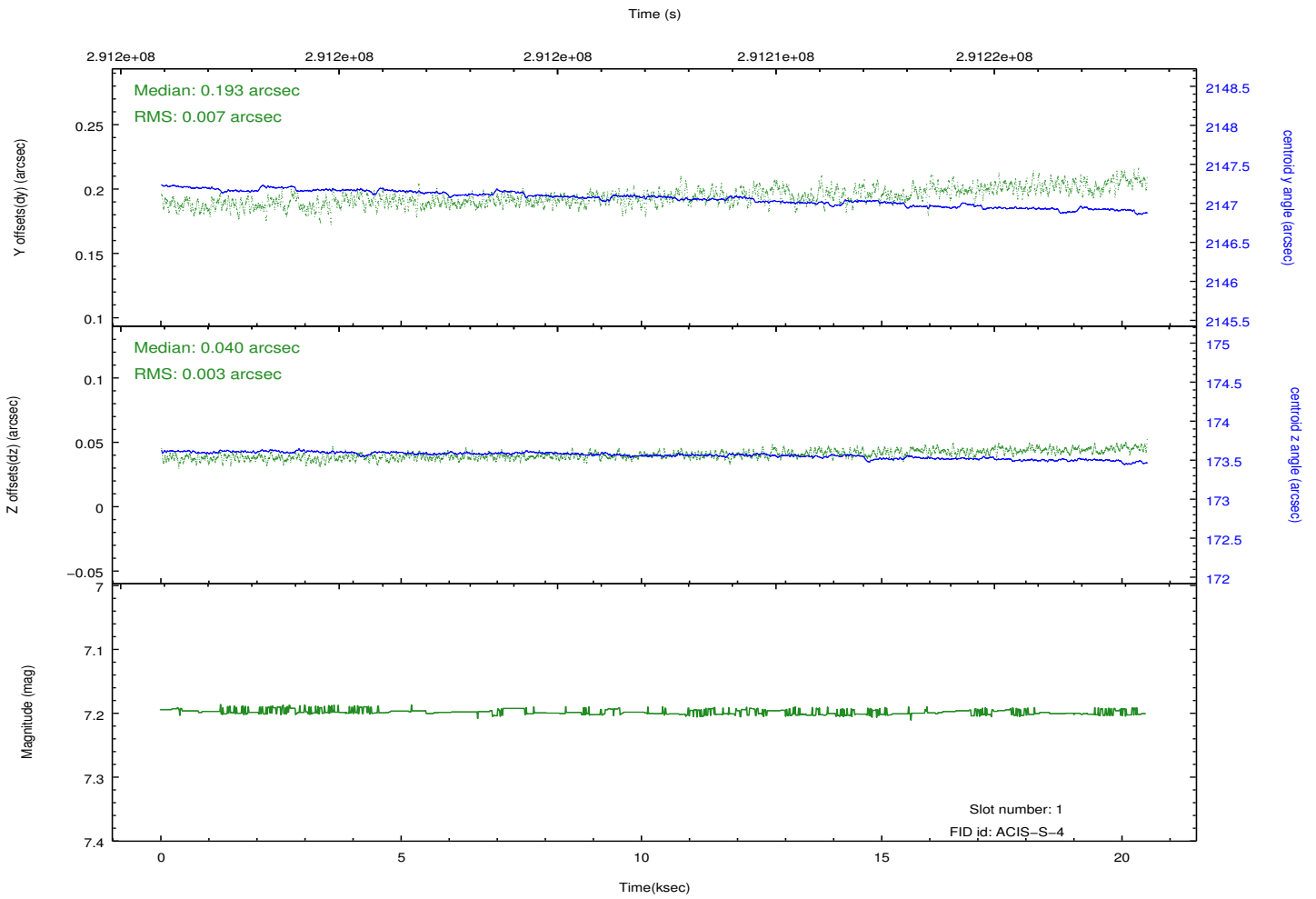
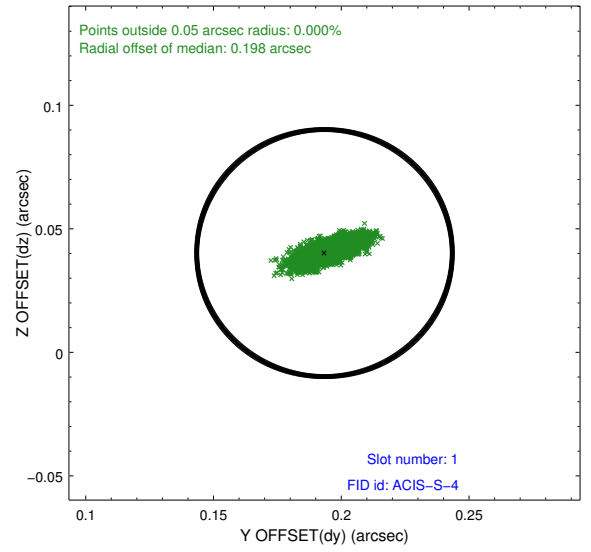
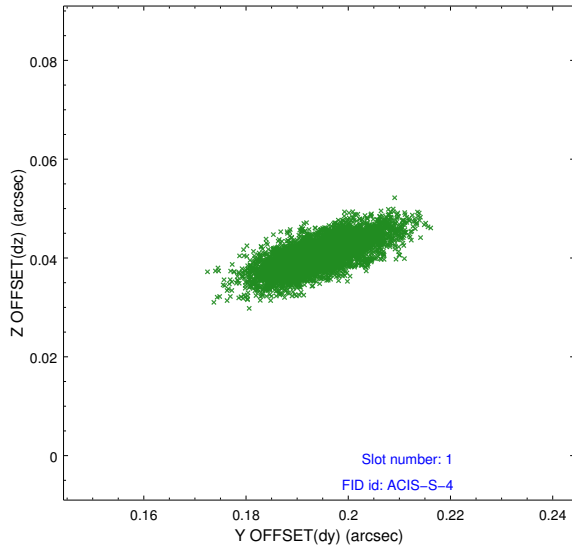


## 2.5 FID Slots

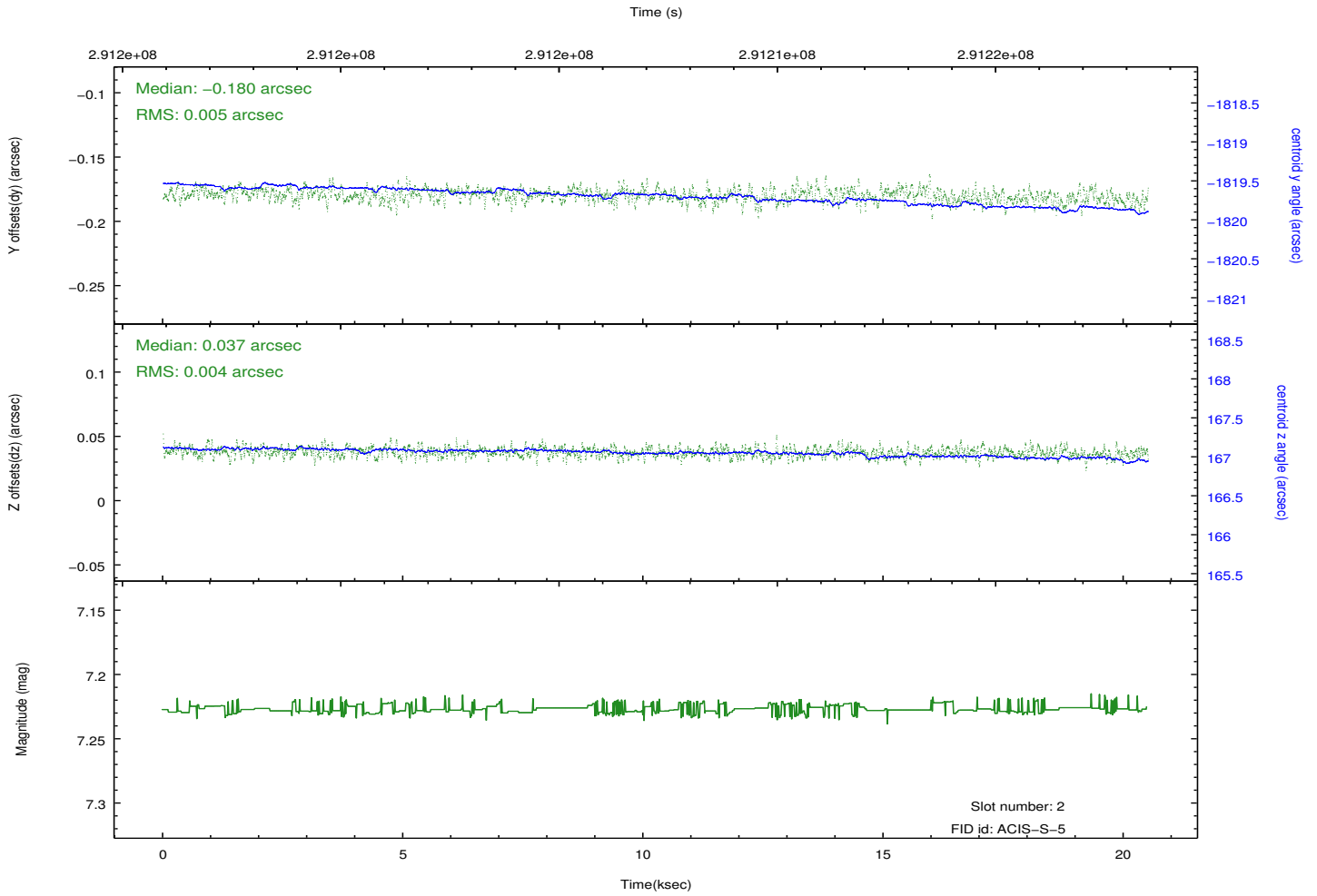
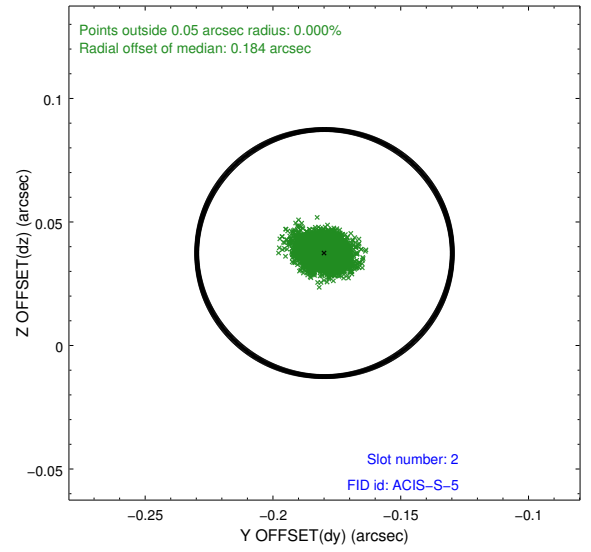
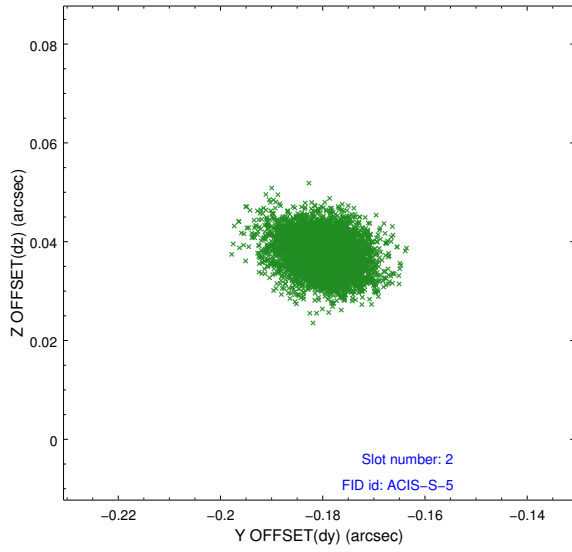
### 2.5.1 Slot 0



## 2.5.2 Slot 1



### 2.5.3 Slot 2



# A Summary

## A.1 Status

V&V Scientist	Beth Sundheim
V&V Date (YYYY-MM-DD)	2012.04.23
V&V Edition	1
V&V Disposition and Status	OK
V&V Charge Time	20.0447999

## A.2 Comments