

V&V Reference Report

L2 ASCDS Version : 8.4.4

Observation 8254 - L2 Version 2
Chandra X-Ray Center

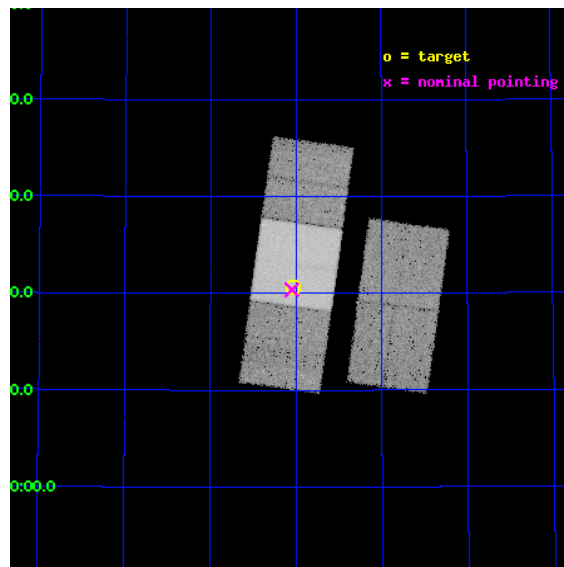
L2 Processing Date : Apr 25 2012

Contents

1	Front	2
2	OBI	3
2.1	OBI	3
2.1.1	Images	3
2.1.2	Bias	3
2.1.3	Parameters	4
2.1.4	Events	4
2.2	Compared Parameters	5
2.3	Aspect	6
2.4	Star Slots	9
2.4.1	Slot 3	9
2.4.2	Slot 4	10
2.4.3	Slot 5	11
2.4.4	Slot 6	12
2.4.5	Slot 7	13
2.5	FID Slots	14
2.5.1	Slot 0	14
2.5.2	Slot 1	15
2.5.3	Slot 2	16
A	Summary	17
A.1	Status	17
A.2	Comments	17

1 Front

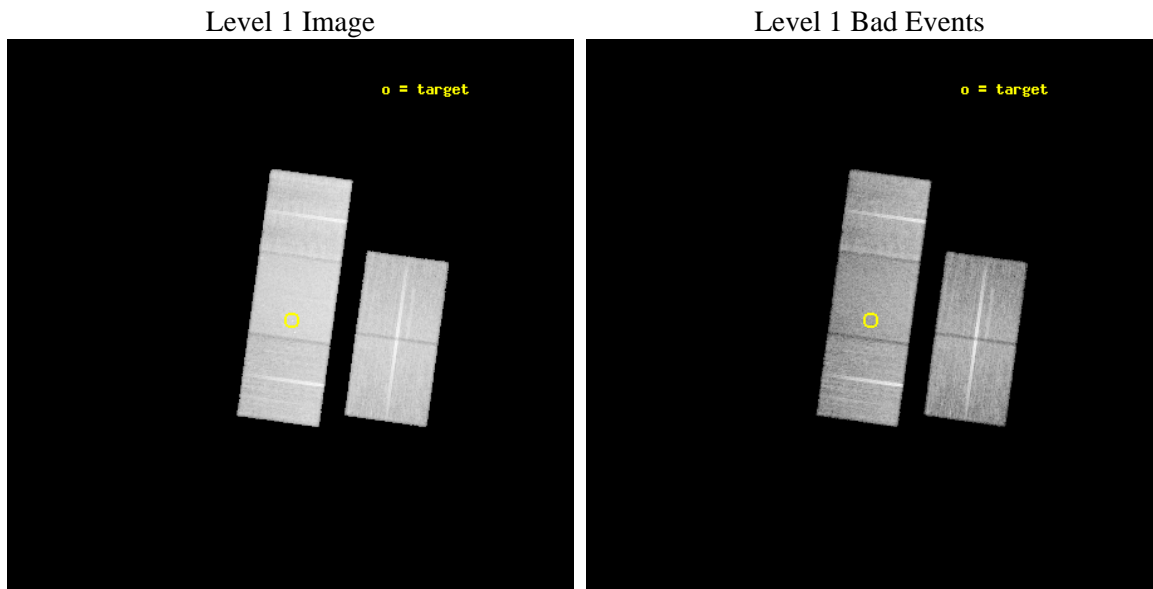
seq_num	701569	Sequence number
obs_id	8254	Observation id
title	A snapshot X-ray/radio survey of AGNs selected from the long menu of SDSS galaxies	Proposal title
observer	Dr. Sebastian Heinz	Principal investigator
object	2MASX J091201+532036	Source name
dtcycle	0	
cycle	P	events from which exps? Prim/Second/Both
ra_targ	138.007	Observer's specified target RA [deg]
dec_targ	53.343497	Observer's specified target Dec [deg]
ra_nom	138.01217360864	Nominal RA [deg]
dec_nom	53.339778891543	Nominal Dec [deg]
roll_nom	277.90442439218	Nominal Roll [deg]
revision	2	Processing version of data
ontime	19030.900146365	Sum of GTIs [s]
livetime	18782.247425608	Livetime [s]
ontime2	19027.759186029	Sum of GTIs [s]
ontime3	19027.759156168	Sum of GTIs [s]
ontime6	19030.900146365	Sum of GTIs [s]
ontime7	19030.900146365	Sum of GTIs [s]
ontime8	19030.900146365	Sum of GTIs [s]
l2events	183300	Number of level 2 events



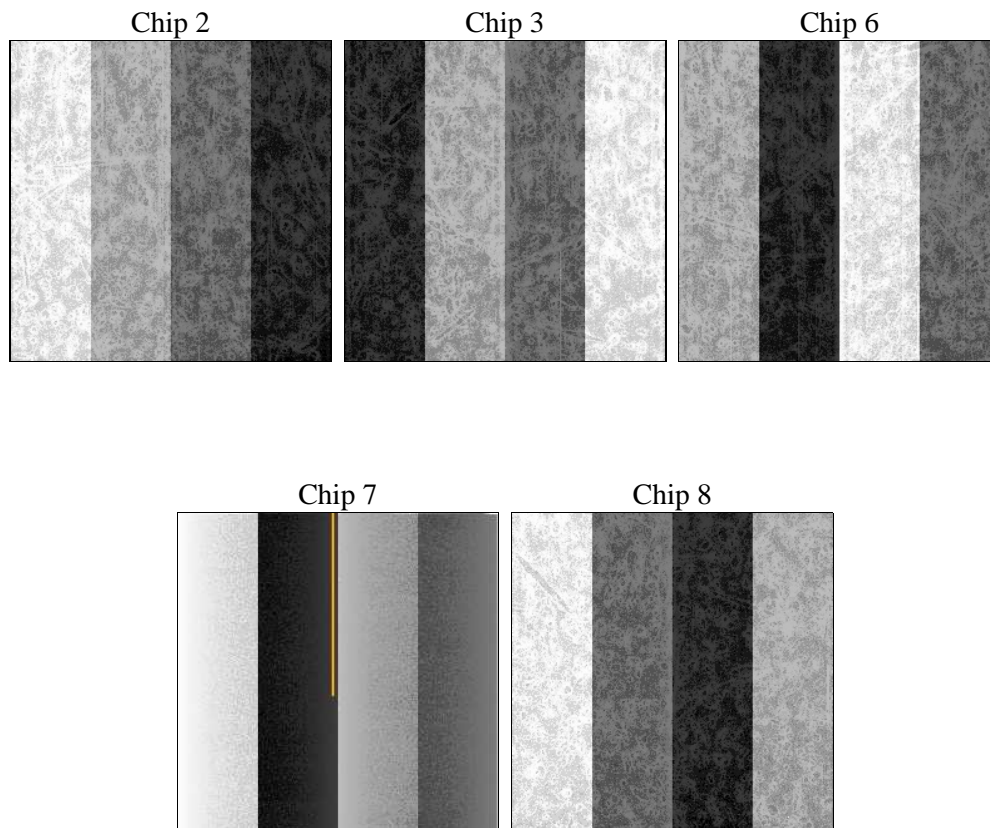
2 OBI

2.1 OBI

2.1.1 Images



2.1.2 Bias



2.1.3 Parameters

obi_num	0	Obi number	sched_exp_time	19000.000000	[s] Scheduled observation exposure time
ascdsver	8.4.4	Processing system revision	ontime	19030.900146365	Sum of GTIs [s]
caldbver	4.4.9	 	ontime2	19027.759186029	Sum of GTIs [s]
date	2012-04-25T21:11:42	Date and time of file creation	ontime3	19027.759156168	Sum of GTIs [s]
revision	2	Processing version of data	ontime6	19030.900146365	Sum of GTIs [s]
			ontime7	19030.900146365	Sum of GTIs [s]
			ontime8	19030.900146365	Sum of GTIs [s]
			l1events	1038544	Number of level 1 events

2.1.4 Events

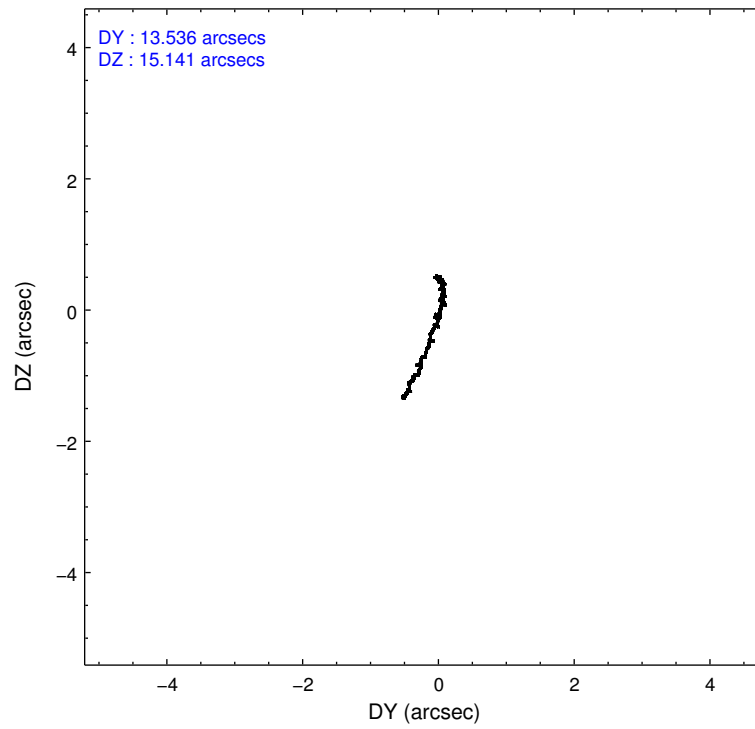
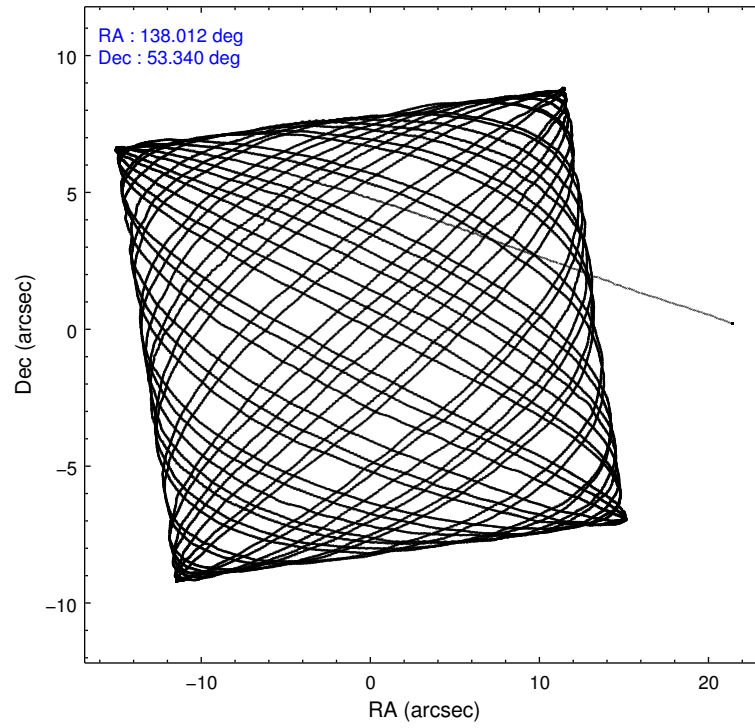
	ccd 2	ccd 3	ccd 6	ccd 7	ccd 8
level 1 events	183113	175155	188493	253404	238379
rejected events	161379	153376	165844	147694	185392
rejected %	88%	87%	87%	58%	77%

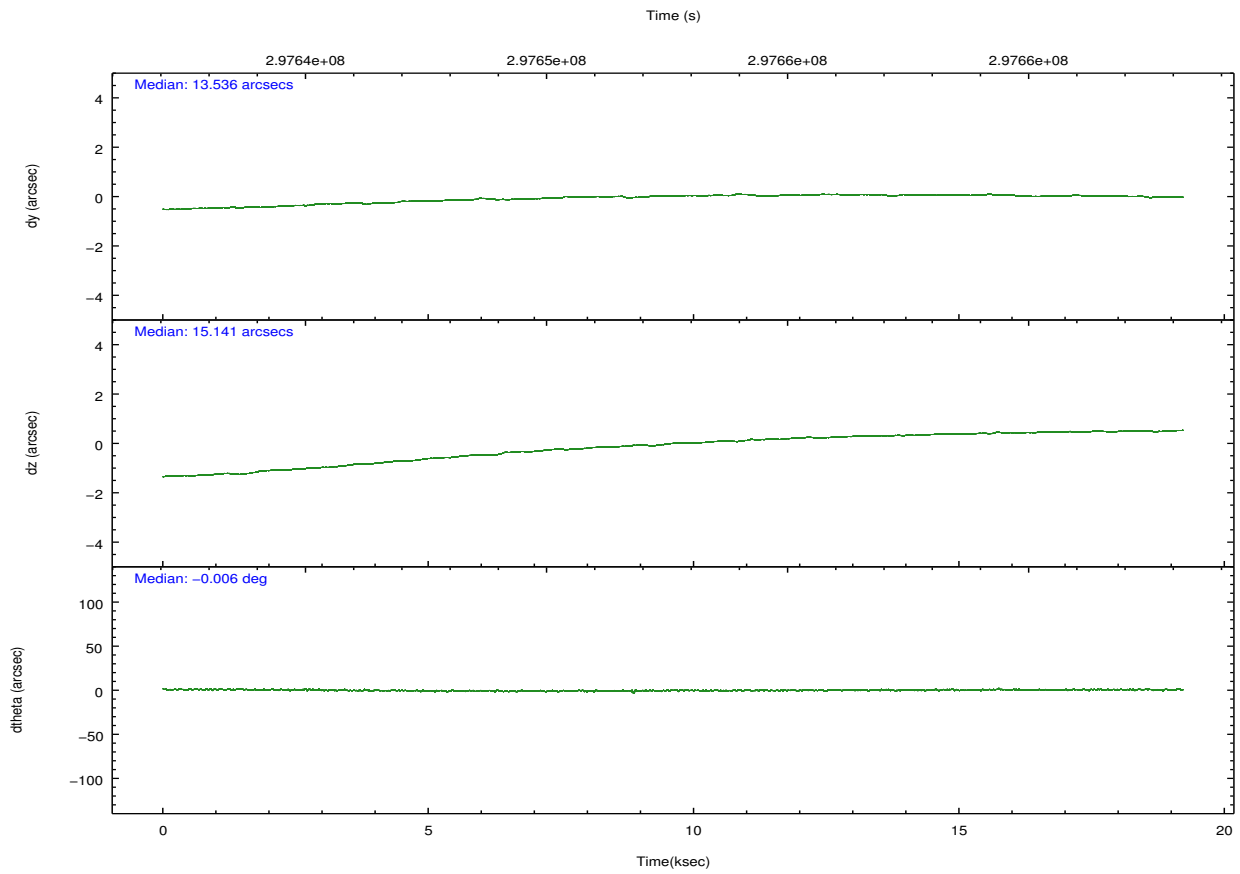
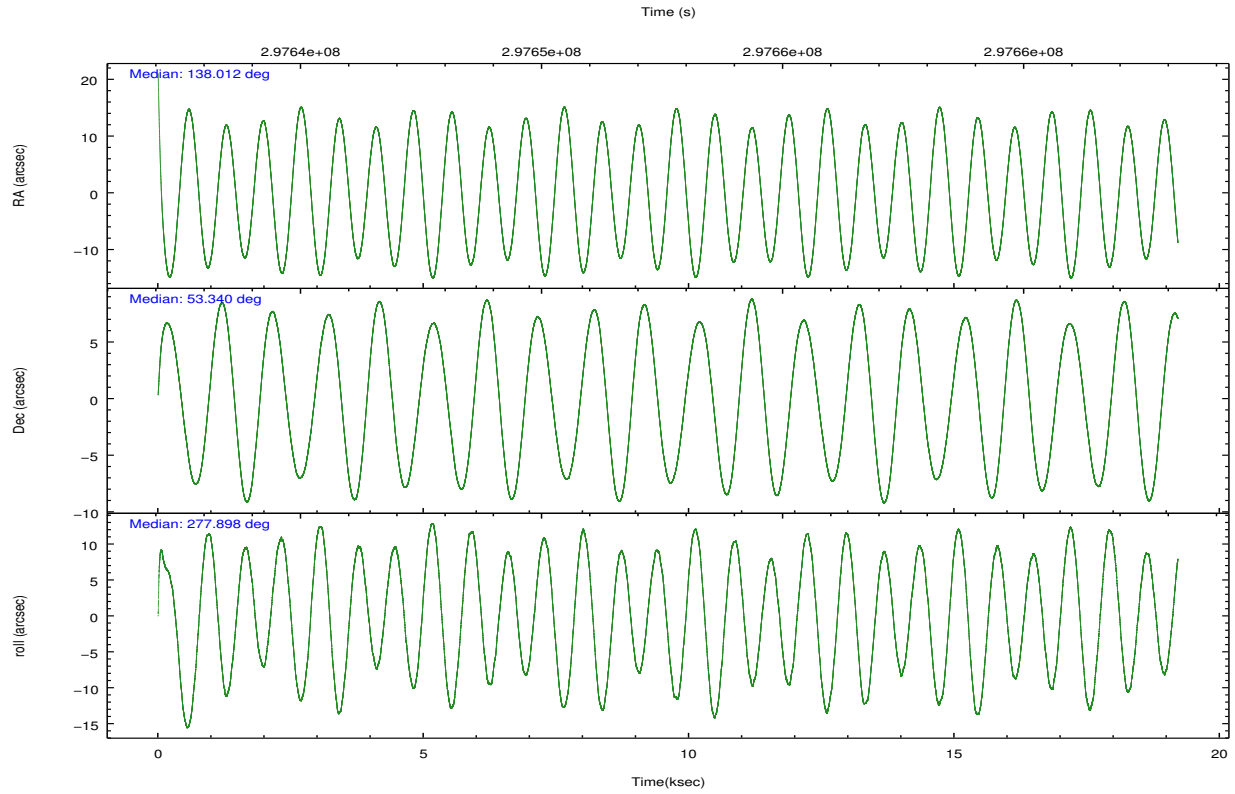
	ccd 2	ccd 3	ccd 6	ccd 7	ccd 8
grade 0 events	9649	9429	8877	9174	16129
	5%	5%	4%	3%	6%
grade 1 events	122	118	88	224	174
	0%	0%	0%	0%	0%
grade 2 events	4517	4305	5014	21232	12288
	2%	2%	2%	8%	5%
grade 3 events	2053	2006	2137	8970	5555
	1%	1%	1%	3%	2%
grade 4 events	2034	2153	2155	8868	5112
	1%	1%	1%	3%	2%
grade 5 events	7027	8414	8785	23931	11624
	3%	4%	4%	9%	4%
grade 6 events	3486	3892	4474	57509	13912
	1%	2%	2%	22%	5%
grade 7 events	154225	144838	156963	123496	173585
	84%	82%	83%	48%	72%

2.2 Compared Parameters

Parameter	Planned	Actual	Parameter	Planned	Actual
Instrument	ACIS	ACIS	Obspar format version number	7	7
Detector	ACIS-23678	ACIS-23678	Obspar file type	PREDICTED	ACTUAL
Grating	NONE	NONE	Obspar update status	NONE	UPDATED
Data mode	VFAINT	VFAINT	CCD I0 on	N	N
Observation mode	POINTING	POINTING	CCD I1 on	N	N
[deg] Pointing RA	137.983526	138.0121736086417	CCD I2 on	O1	Y
[deg] Pointing Dec	53.361104	53.33977889154344	CCD I3 on	O2	Y
[deg] Pointing Roll	277.770776	277.9044243921847	CCD S0 on	N	N
[mm] SIM focus pos	-0.684267	-0.6828225247311905	CCD S1 on	N	N
[mm] SIM defocus	0	0.001444936568705701	CCD S2 on	O4	Y
[mm] SIM translation stage pos	-190.132523	-190.145094680475	CCD S3 on	Y	Y
[mm] SIM translation stage offset	0	0.01257209746719923	CCD S4 on	O3	Y
[s] Observation start time (MET)	297643229.184000	297642286.79198	CCD S5 on	N	N
Observation start date	2007-06-07T22:39:24	2007-06-07T22:24:46	Number of optional ACIS chips dropped	0	0
[s] Observation end time (MET)	297662229.184000	297662993.33047	On-chip summing requested	N	N
Observation end date	2007-06-08T03:56:04	2007-06-08T04:09:53	Subarray requested	NONE	NONE
Read mode	TIMED	TIMED	Alternating exposures requested	N	N
			[s] Primary exposure time	0.000000	3.1

2.3 Aspect



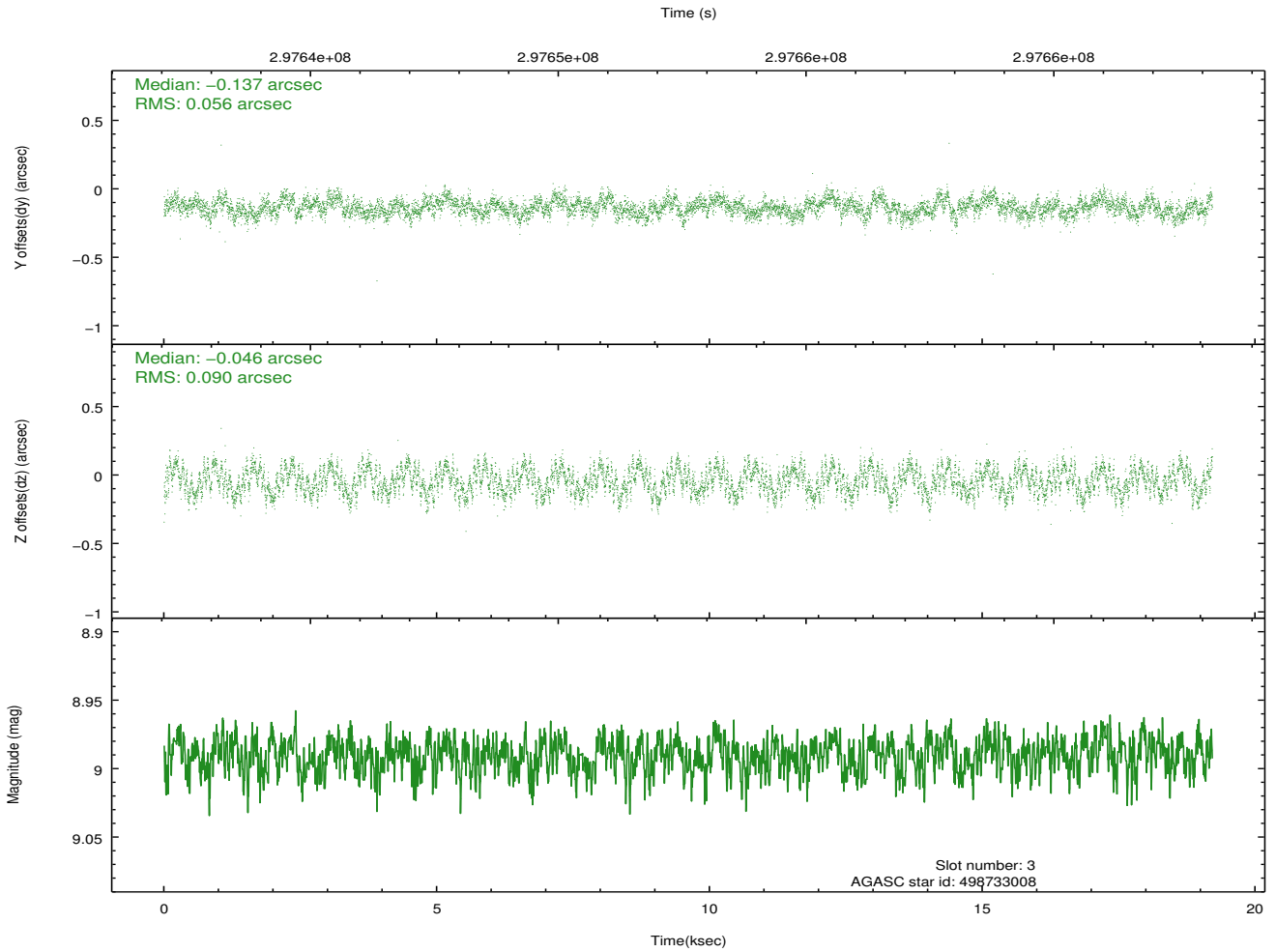
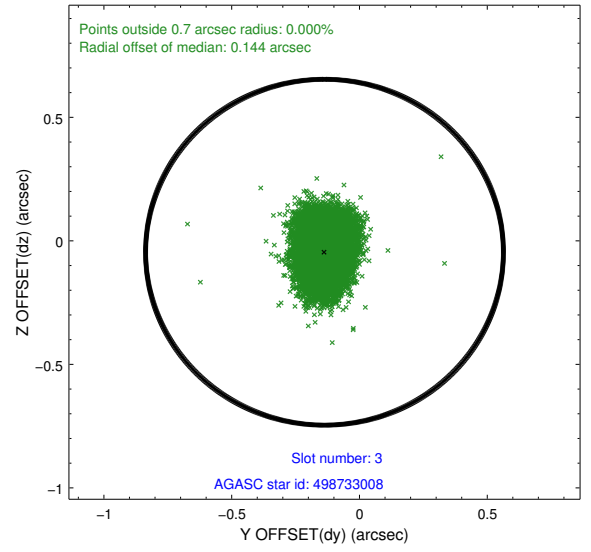
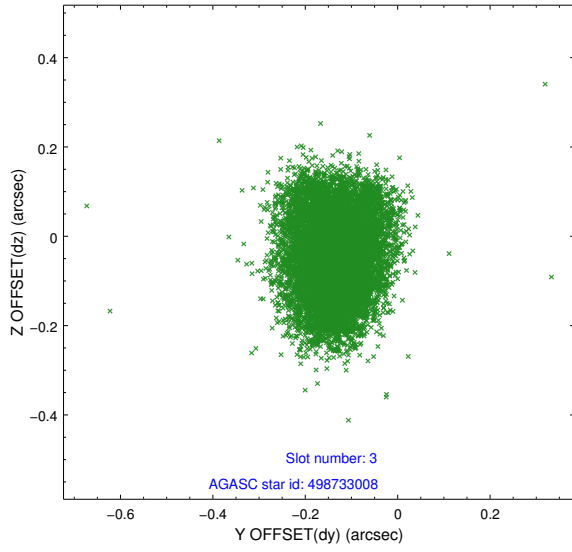


Slot Statistics

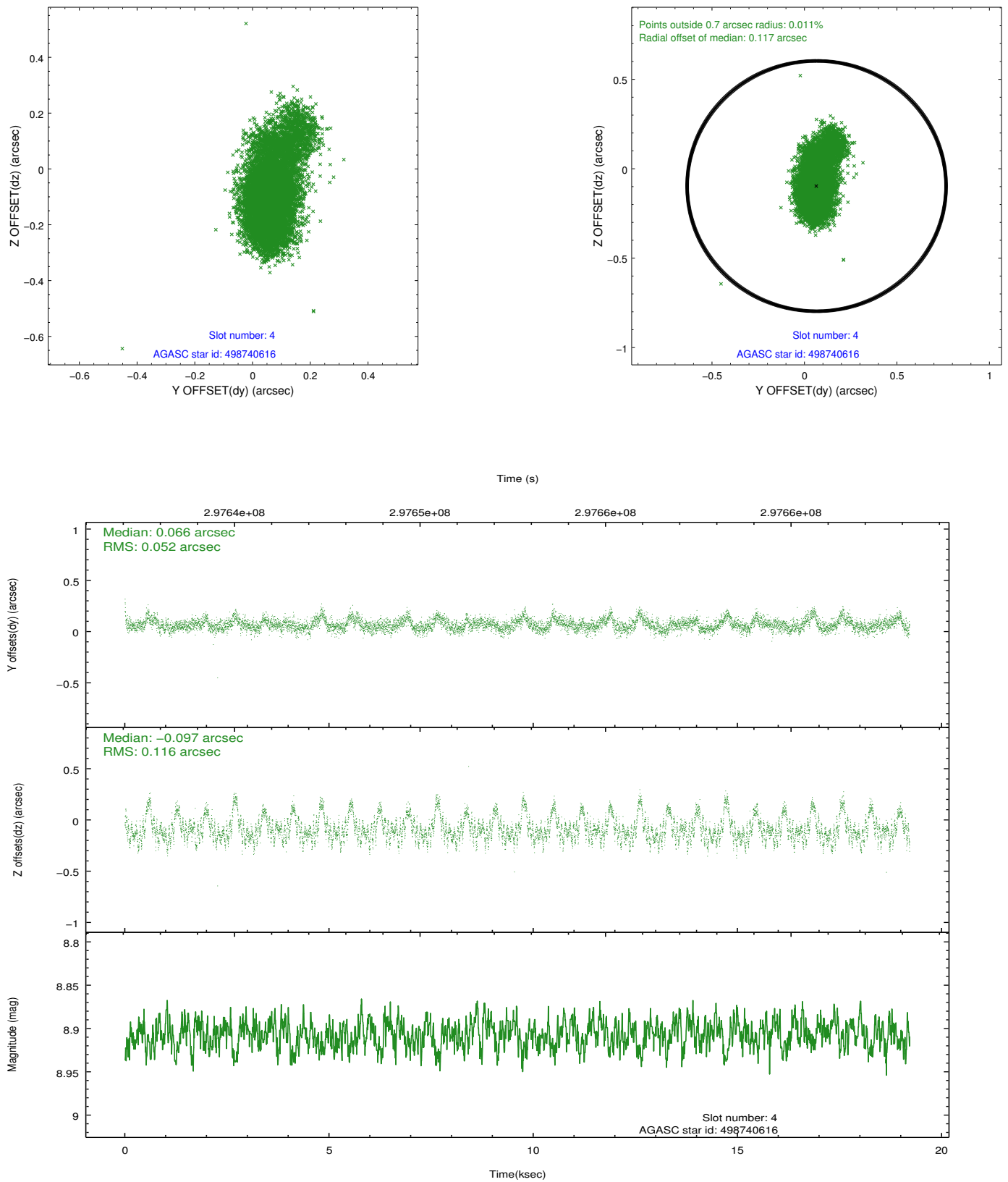
slot	status	id	mag	n_pts	med_dy	med_dz	dr1	dr2	ra	dec	mean_y	mean_z
0	FID	ACIS-S-1	7.18	4687	0.085	-0.074	0.027	0.037	0.000000	0.000000	929.76	-1731.93
1	FID	ACIS-S-5	7.23	4687	-0.160	0.045	0.010	0.028	0.000000	0.000000	-1819.38	165.51
2	FID	ACIS-S-6	7.33	4686	0.054	0.043	0.028	0.063	0.000000	0.000000	395.04	809.70
3	GUIDE	498733008	8.99	9362	-0.137	-0.046	0.116	0.177	137.038124	53.259022	76.17	-2064.90
4	GUIDE	498740616	8.91	9362	0.066	-0.097	0.124	0.250	137.107508	53.300657	-49.72	-1895.37
5	GUIDE	498863792	8.26	9364	-0.035	-0.034	0.062	0.102	138.773096	53.489467	-237.45	1738.91
6	GUIDE	498870120	9.45	9364	0.258	0.021	0.114	0.179	137.939681	52.728175	2245.39	-402.03
7	GUIDE	498862256	9.37	9365	-0.156	0.135	0.103	0.164	138.592031	54.068839	-2355.39	1618.71

2.4 Star Slots

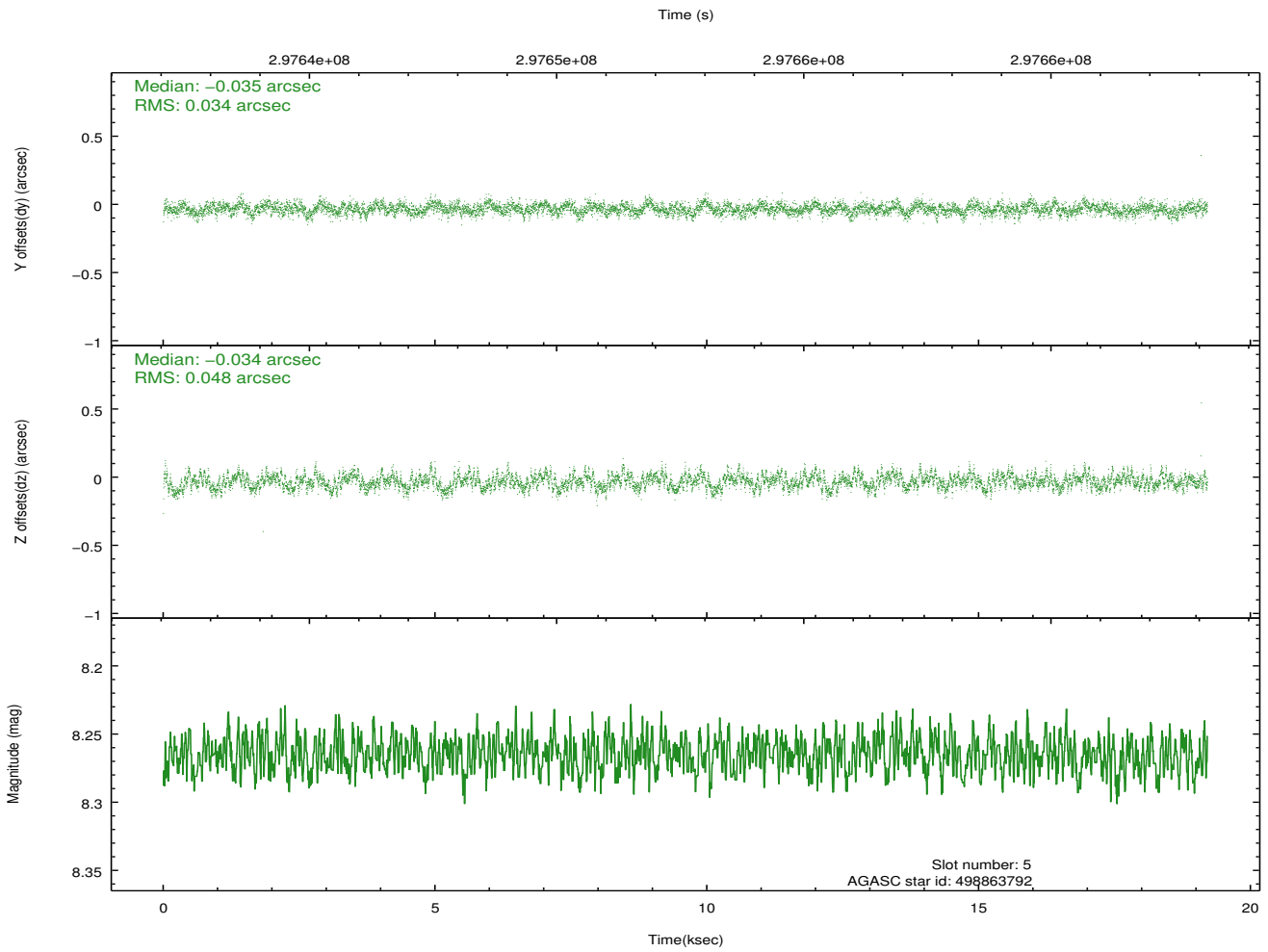
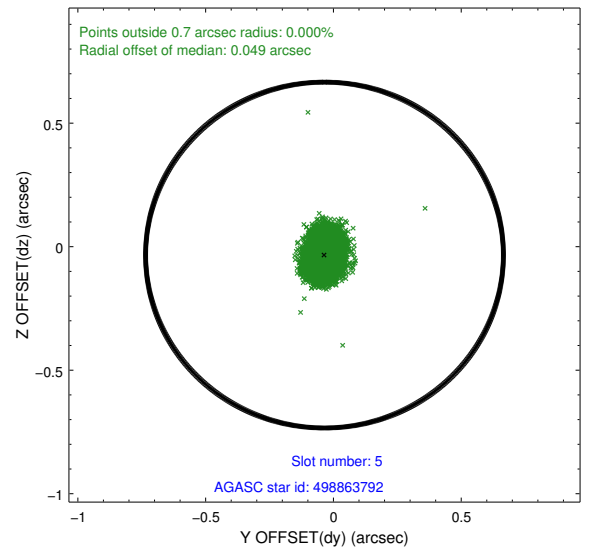
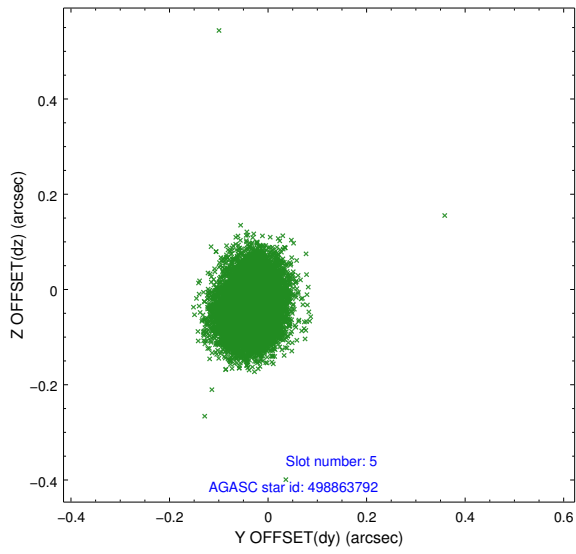
2.4.1 Slot 3



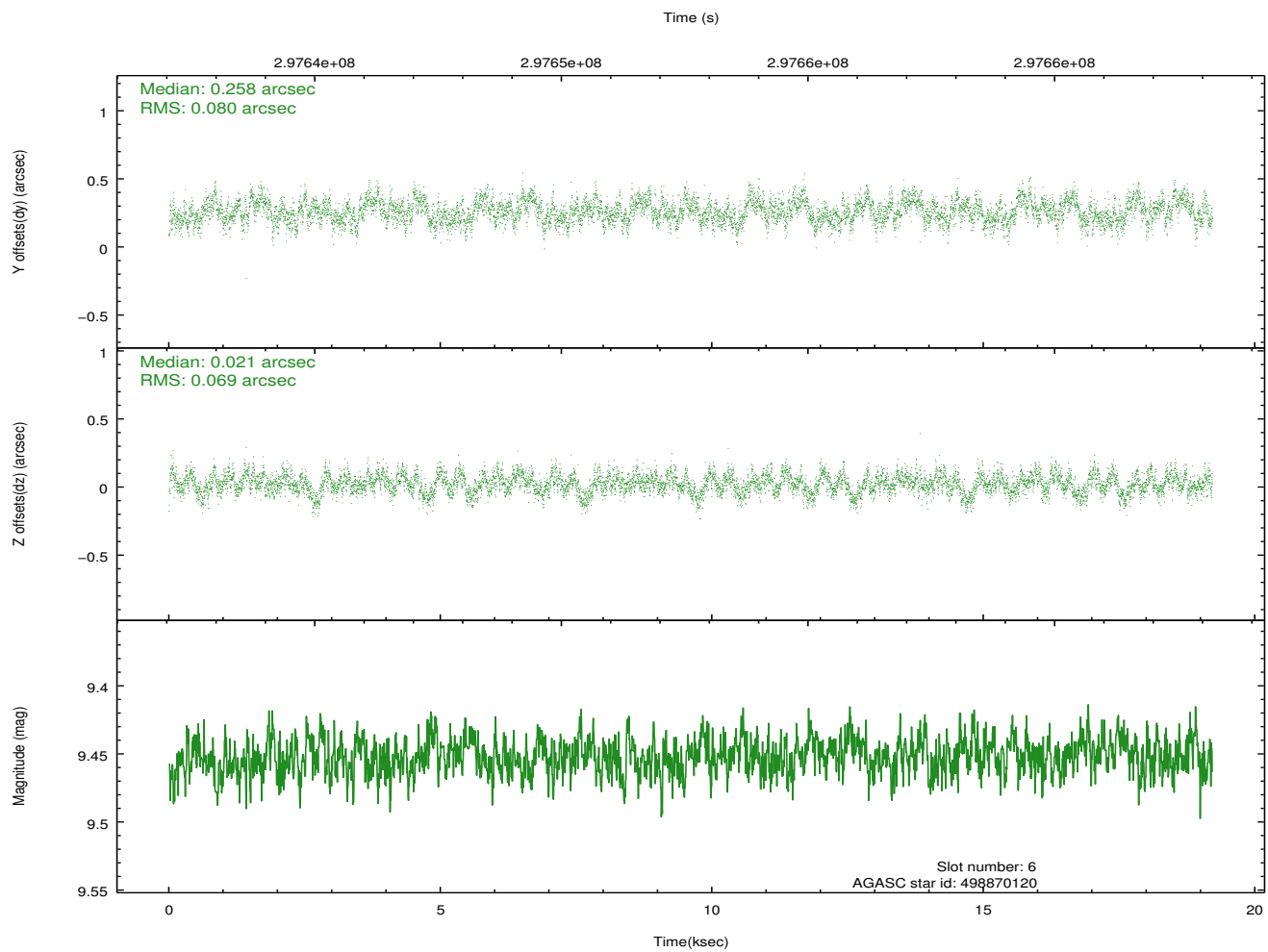
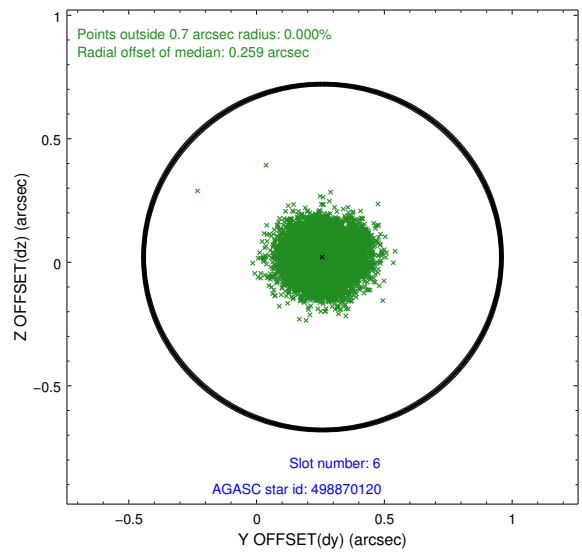
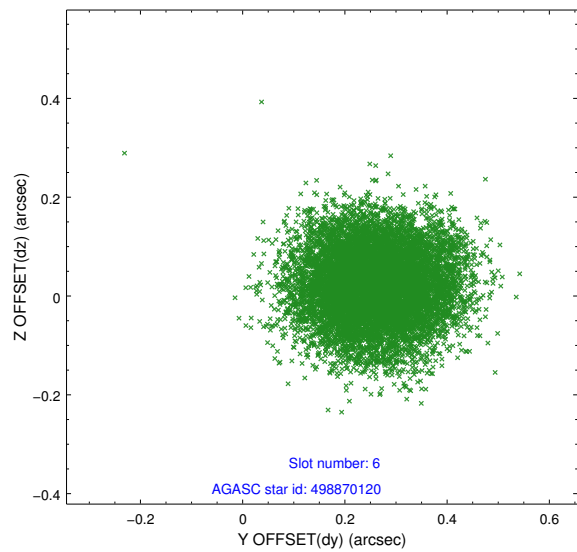
2.4.2 Slot 4



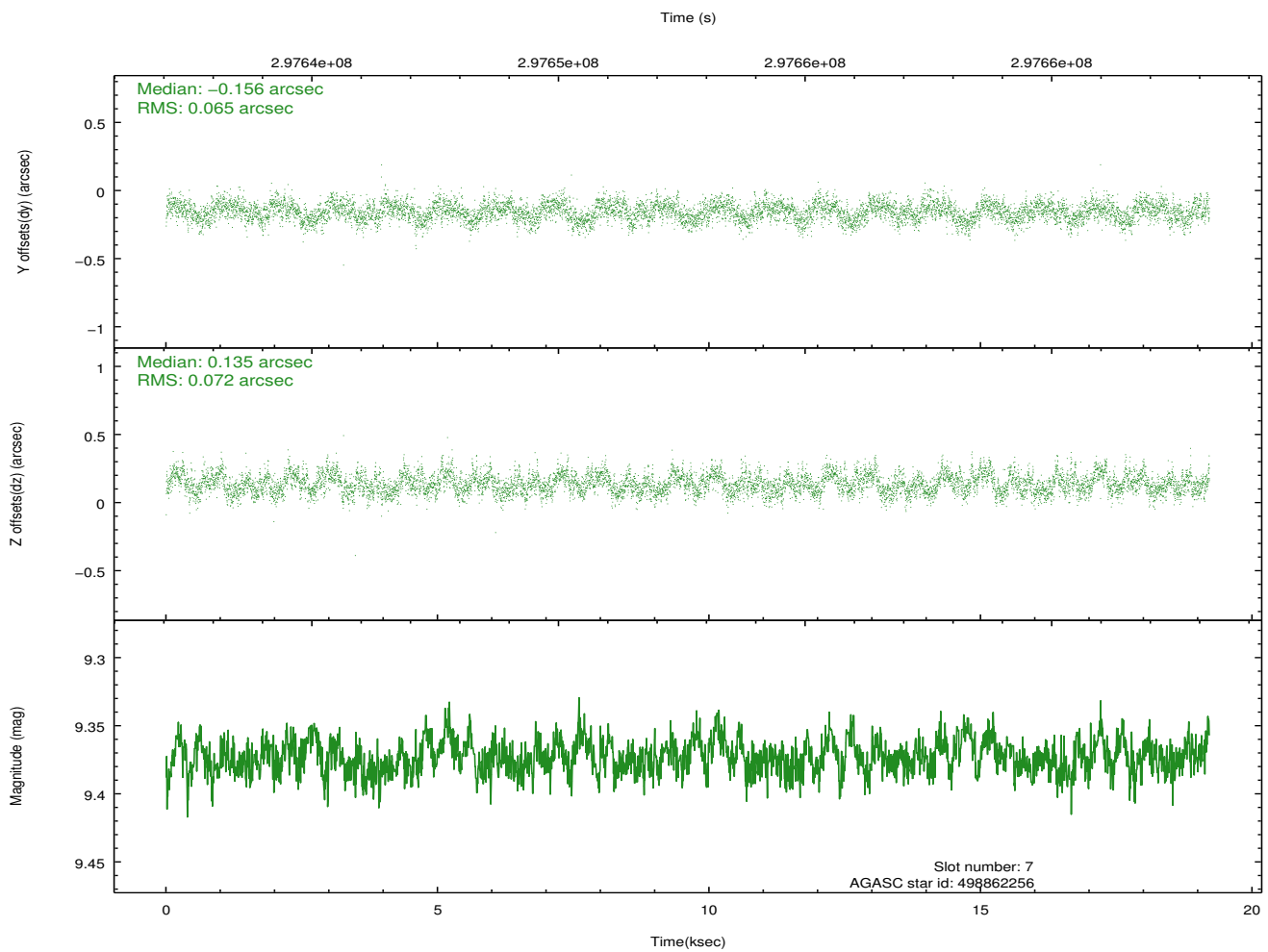
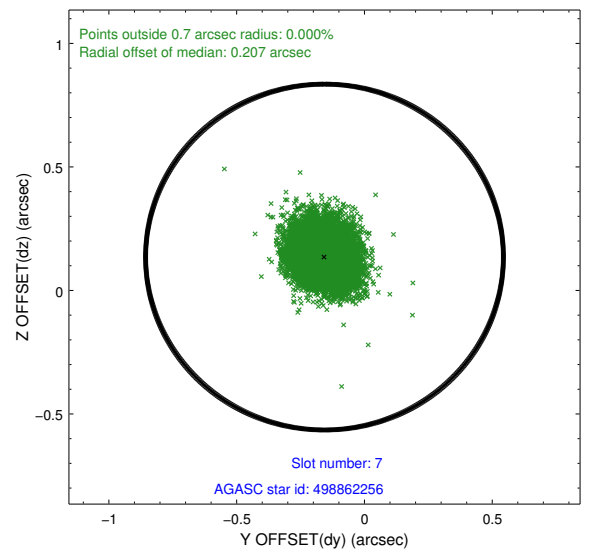
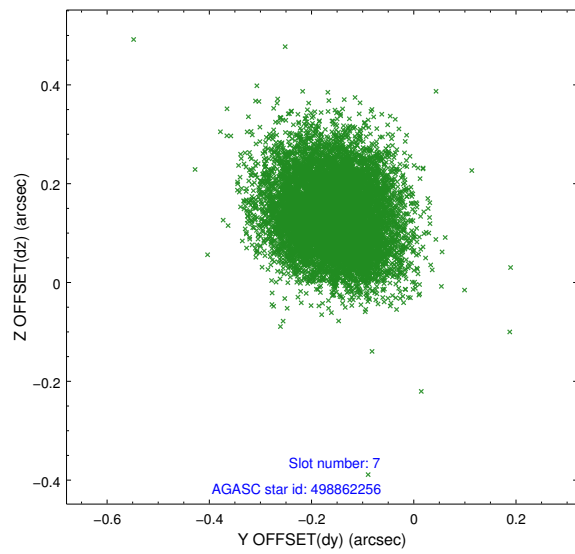
2.4.3 Slot 5



2.4.4 Slot 6

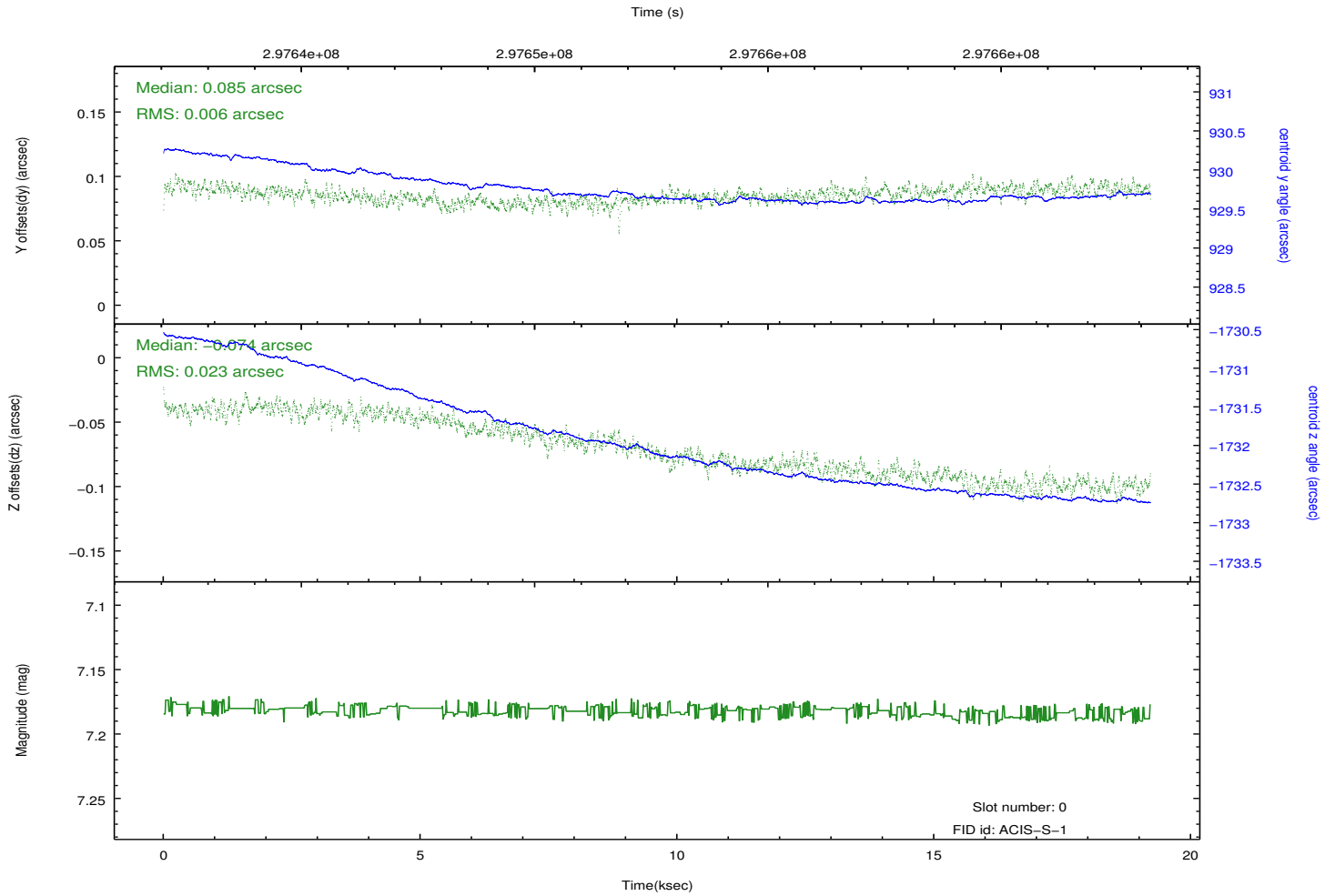
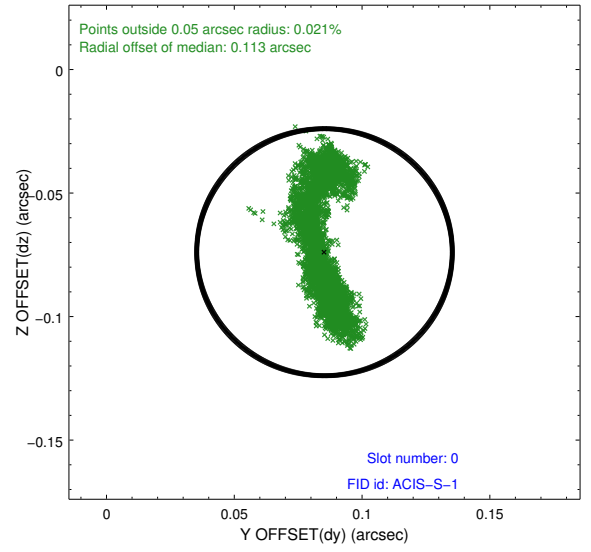
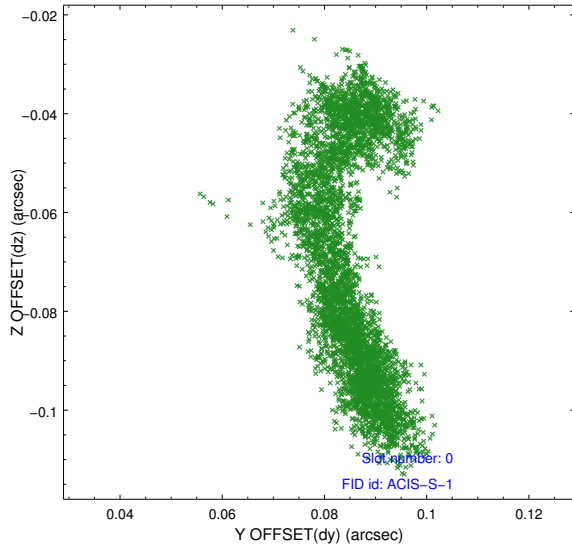


2.4.5 Slot 7

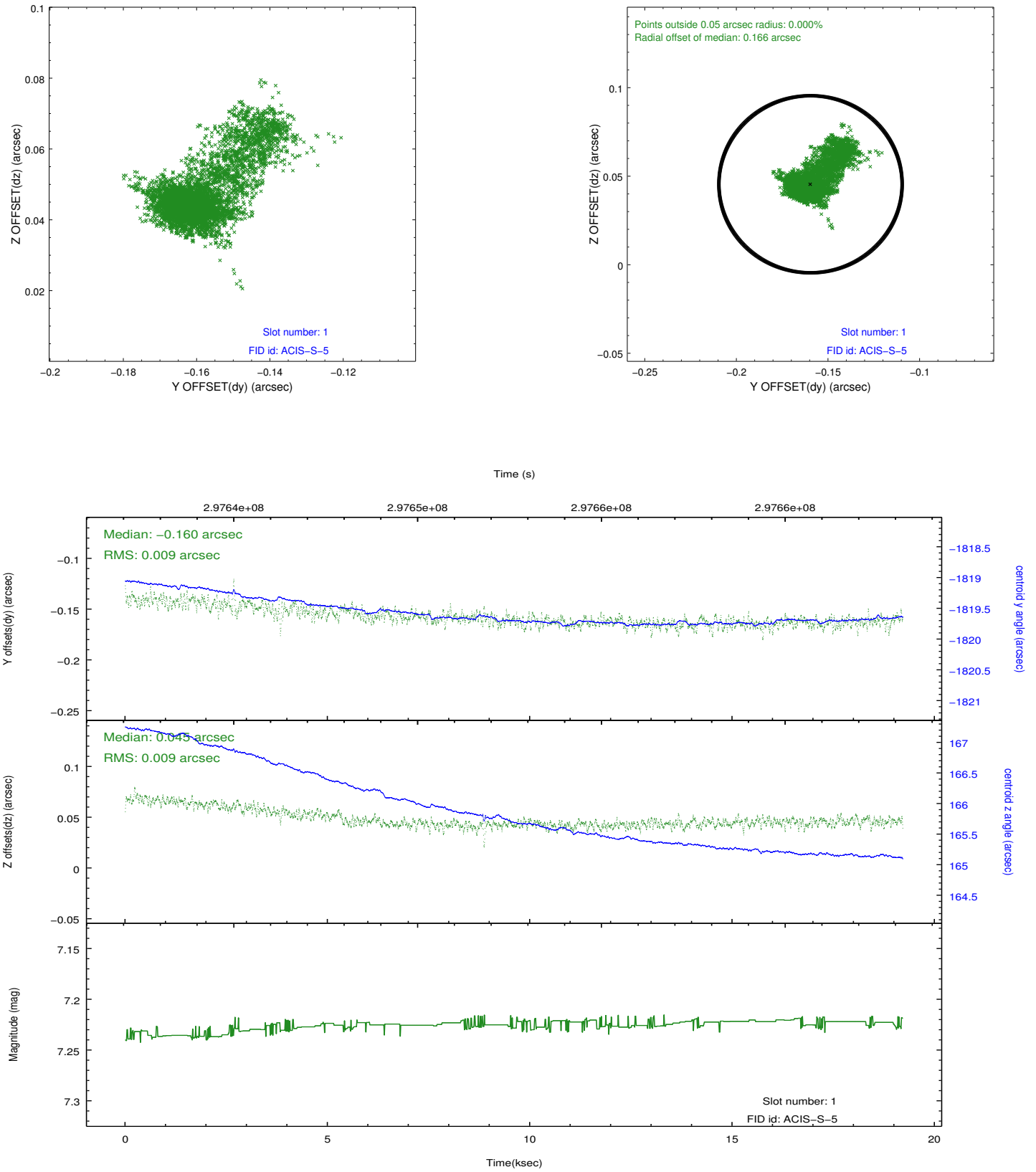


2.5 FID Slots

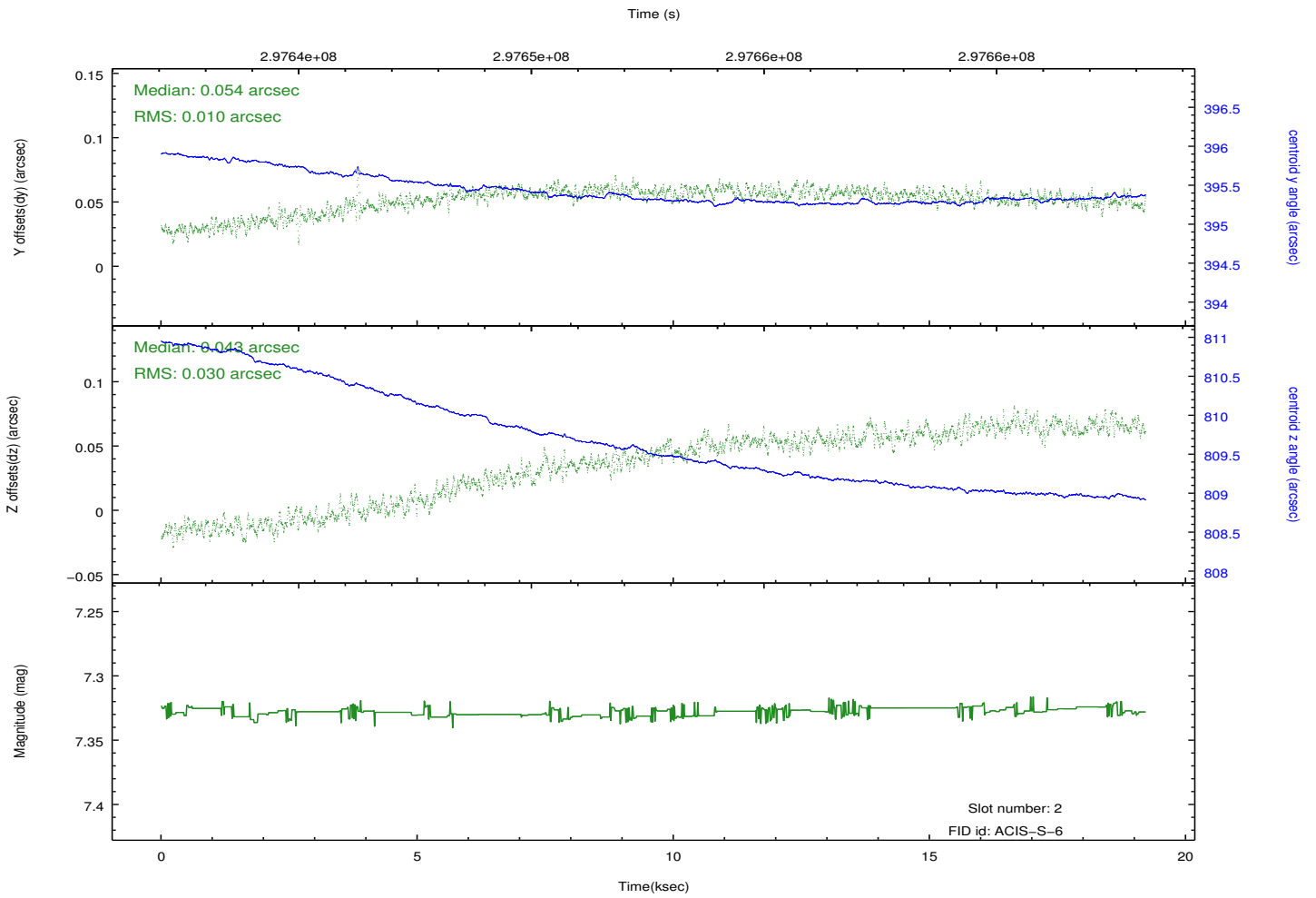
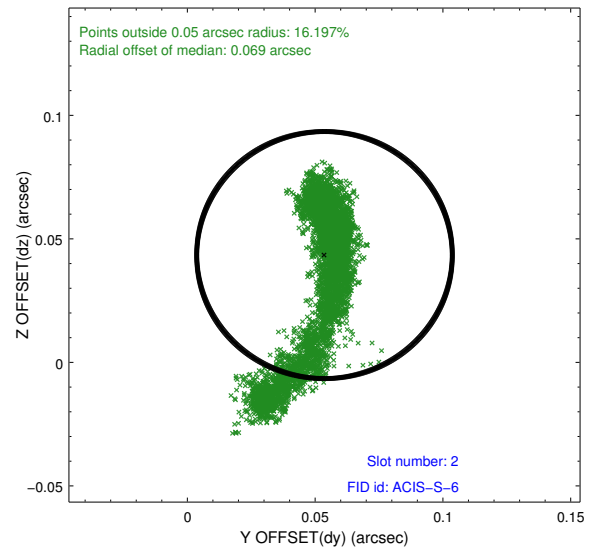
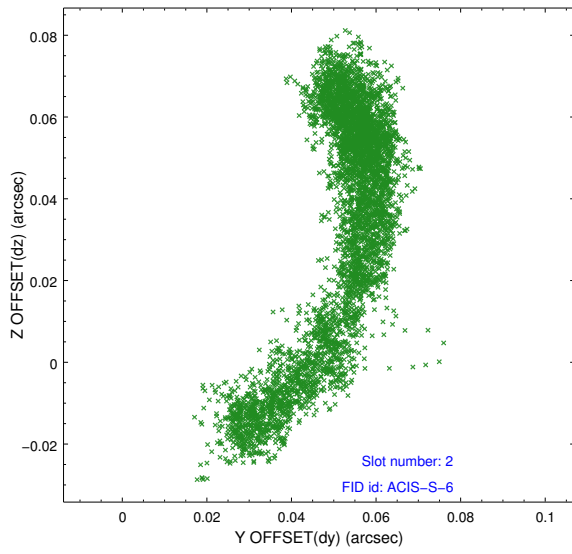
2.5.1 Slot 0



2.5.2 Slot 1



2.5.3 Slot 2



A Summary

A.1 Status

V&V Scientist	Jen Lauer
V&V Date (YYYY-MM-DD)	2012.04.26
V&V Edition	1
V&V Disposition and Status	OK
V&V Charge Time	19.0309001

A.2 Comments

Joint proposal with VLA.