

V&V Reference Report

L2 ASCDS Version : 8.4.4

Observation 8274 - L2 Version 4
Chandra X-Ray Center

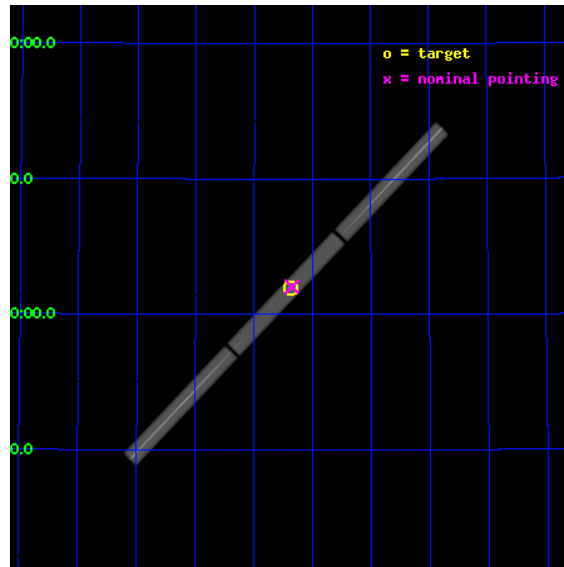
L2 Processing Date : Aug 11 2012

Contents

1	Front	2
2	OBI	3
2.1	OBI	3
2.1.1	Images	3
2.1.2	Parameters	4
2.1.3	Events	4
2.2	Compared Parameters	5
2.3	Aspect	6
2.4	Star Slots	9
2.4.1	Slot 3	9
2.4.2	Slot 4	10
2.4.3	Slot 5	11
2.4.4	Slot 6	12
2.4.5	Slot 7	13
2.5	FID Slots	14
2.5.1	Slot 0	14
2.5.2	Slot 1	15
2.5.3	Slot 2	16
3	Gratings	17
3.1	LETG Arm	17
A	Summary	19
A.1	Status	19
A.2	Comments	19

1 Front

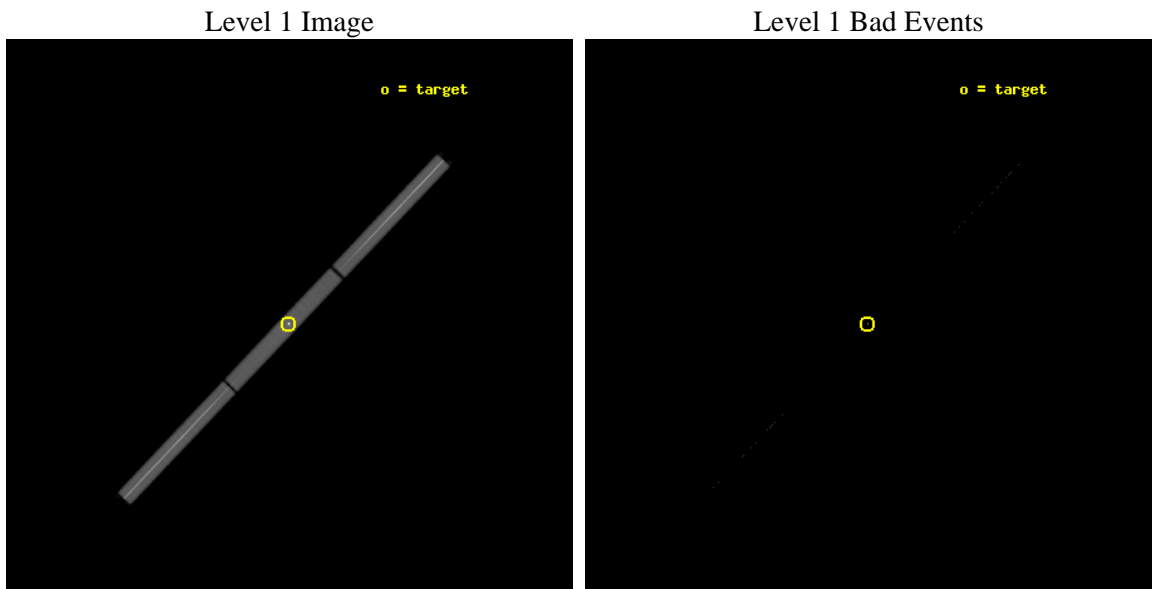
seq_num	290653	Sequence number
obs_id	8274	Observation id
title	AO8 Calibration Observations of HZ43	Proposal title
observer	Dr. CXC Calibration	Principal investigator
object	HZ43	Source name
ra_targ	199.092083	Observer's specified target RA [deg]
dec_targ	29.099	Observer's specified target Dec [deg]
ra_nom	199.08829510369	Nominal RA [deg]
dec_nom	29.102538199295	Nominal Dec [deg]
roll_nom	133.61672659293	Nominal Roll [deg]
revision	4	Processing version of data
ontime	20187.632210553	[s]
livetime	19950.510975739	Ontime multiplied by DTCOR
l2events	2274650	Number of level 2 events



2 OBI

2.1 OBI

2.1.1 Images



2.1.2 Parameters

obi_num	0	Obi number	sched_exp_time	20000.000000	[s] Scheduled observation exposure time
ascdsver	8.4.5	Processing system revision	ontime	20187.632210553	[s]
caldbver	4.5.1.1	 	l1events	2817350	Number of level 1 events
date	2012-08-11T20:23:00	Date and time of file creation			
revision	4	Processing version of data			

2.1.3 Events

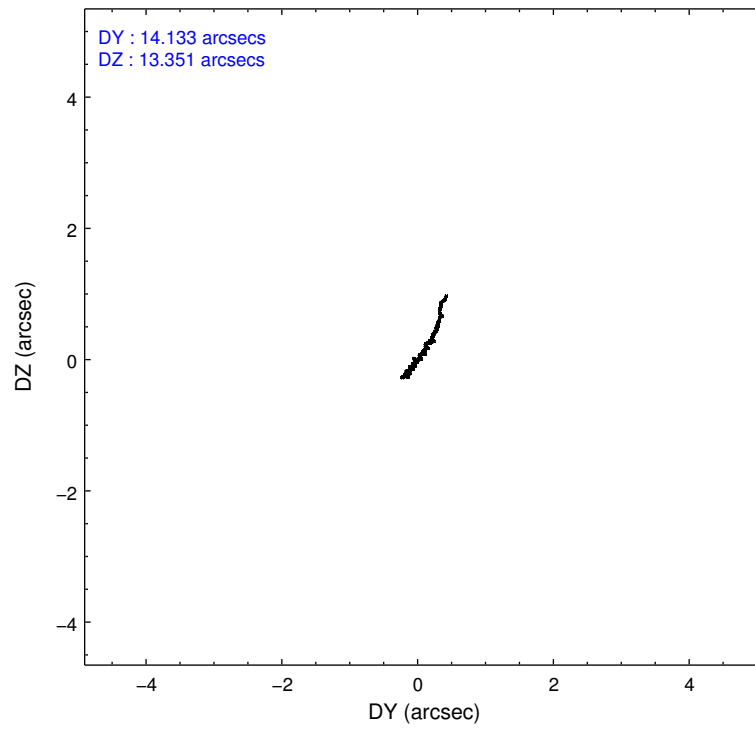
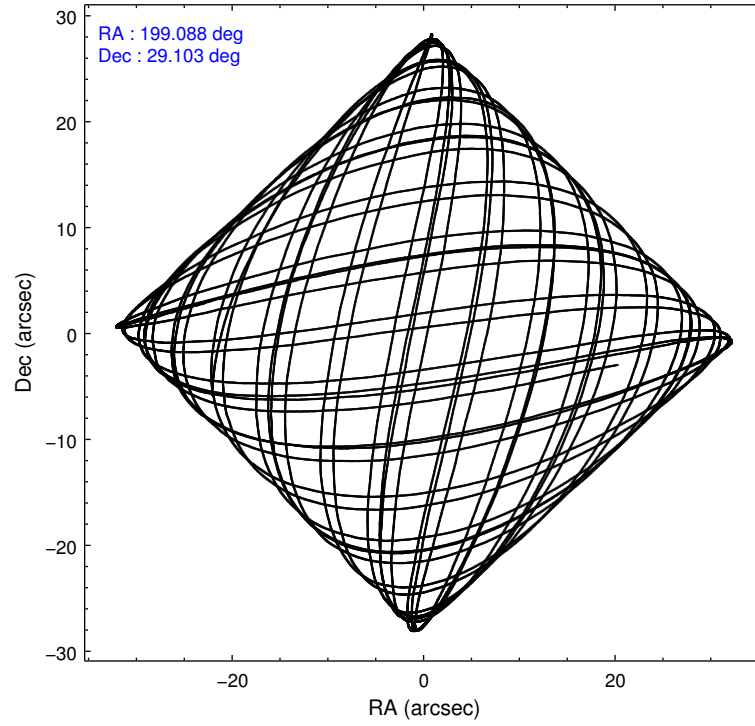
Level 1 Events

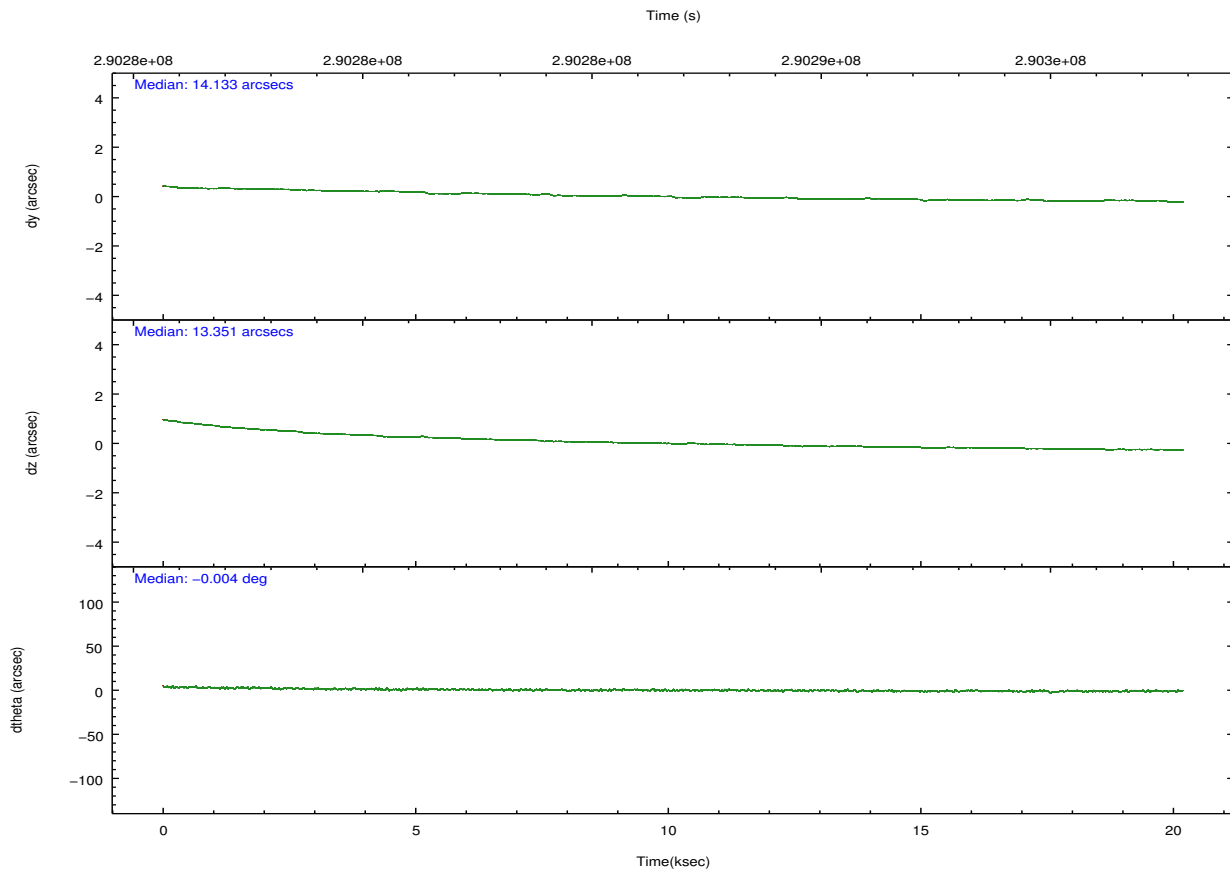
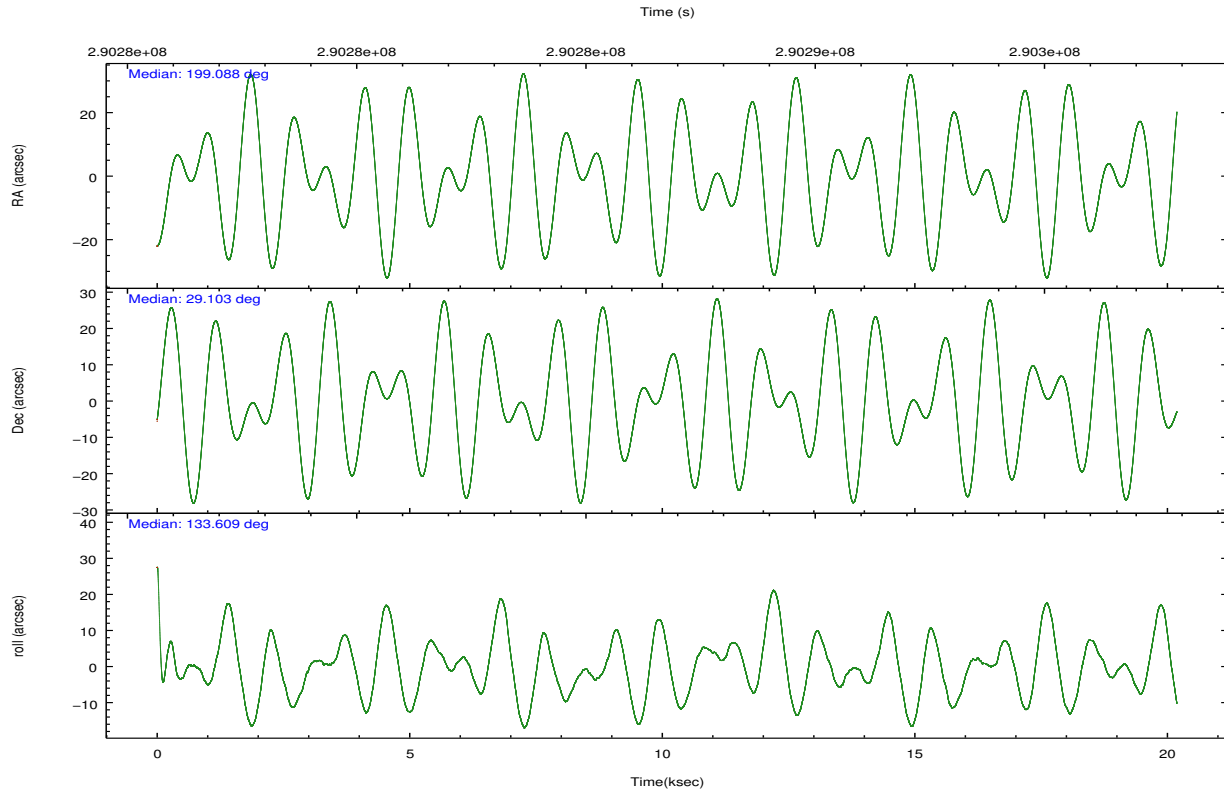
	segment 1	segment 2	segment 3
level 1 events	972032	859339	985979
rejected events	11004	10505	11417
rejected %	1%	1%	1%

2.2 Compared Parameters

Parameter	Planned	Actual	Parameter	Planned	Actual
Instrument	HRC	HRC	Obspar format version number	7	7
Detector	HRC-S	HRC-S	Obspar file type	PREDICTED	ACTUAL
Grating	LETG	LETG	Obspar update status	NONE	UPDATED
Data mode	OBSERVING	OBSERVING			
Observation mode	POINTING	POINTING			
[deg] Pointing RA	199.120313	199.0882951036868			
[deg] Pointing Dec	29.095776	29.10253819929458			
[deg] Pointing Roll	133.533795	133.6167265929296			
[s] Window start time (MET)	286675265.184000	286675265.184000			
[s] Window stop time (MET)	294278465.184000	294278465.184000			
[mm] SIM focus pos	-1.429586	-1.428180813131781			
[mm] SIM defocus	0.1037507710433287	0.1051558262725154			
[mm] SIM translation stage pos	250.455976	250.466033080201			
[mm] SIM translation stage offset	0	-0.01005468664627074			
[s] Observation start time (MET)	290276860.184000	290276138.80314			
Observation start date	2007-03-14T16:26:35	2007-03-14T16:15:38			
[s] Observation end time (MET)	290296860.184000	290297119.01664			
Observation end date	2007-03-14T21:59:55	2007-03-14T22:05:19			

2.3 Aspect



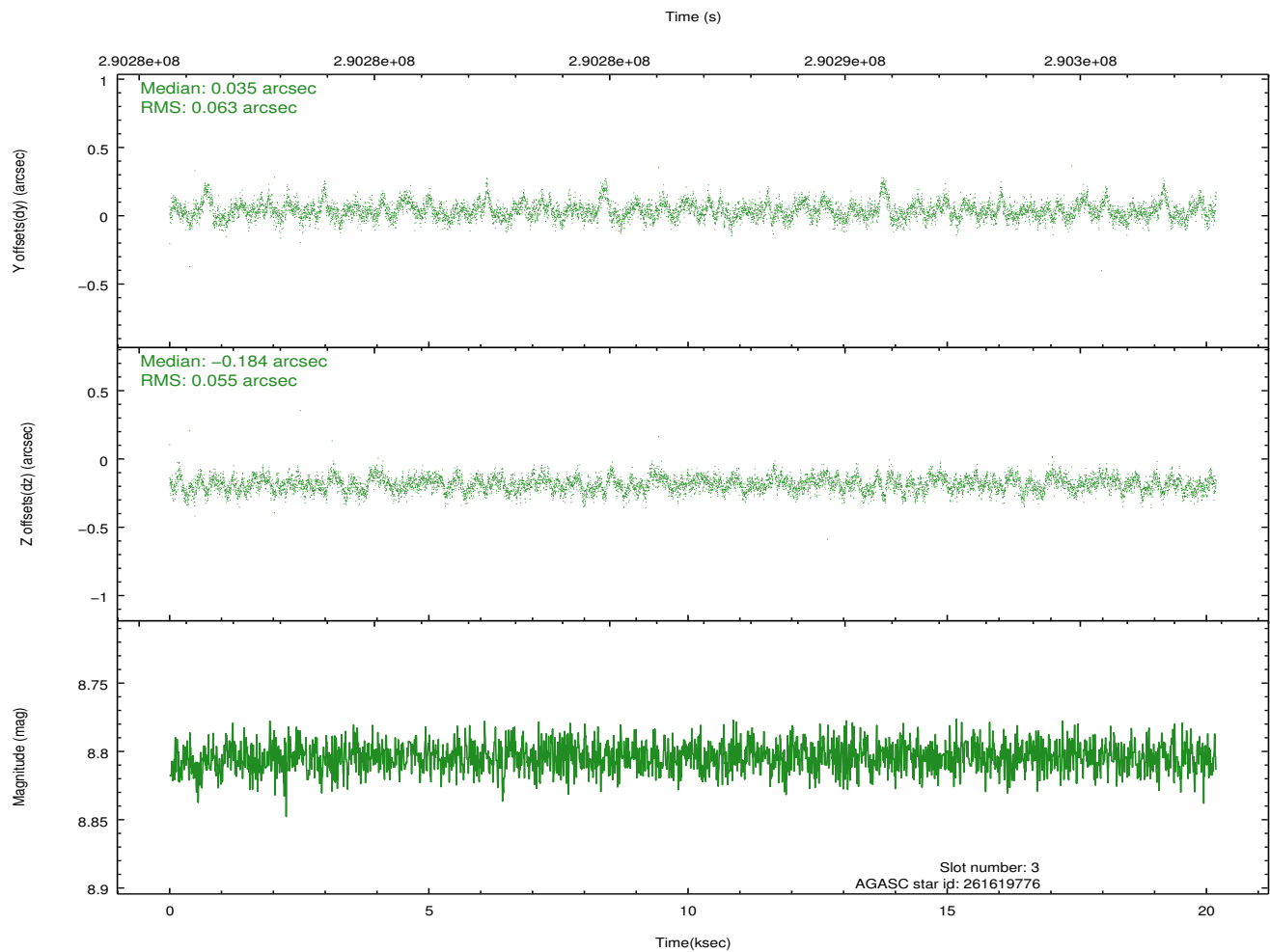
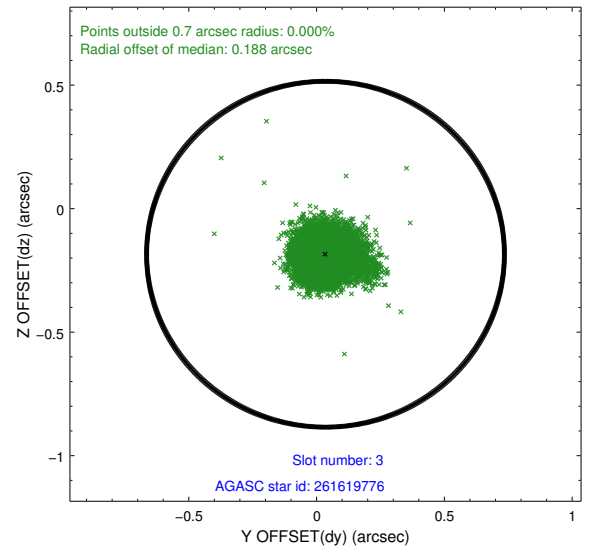
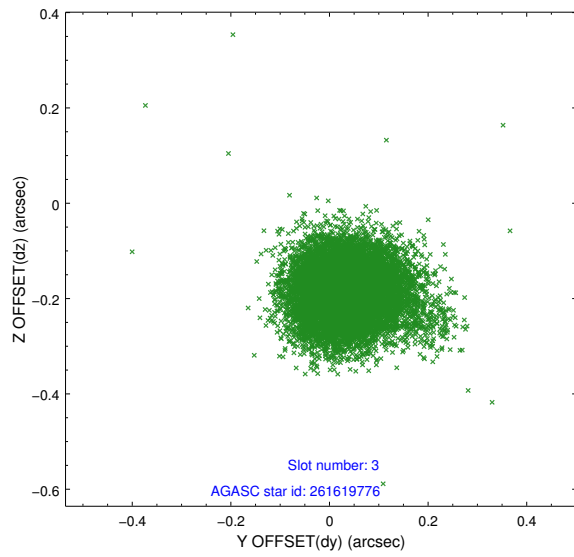


Slot Statistics

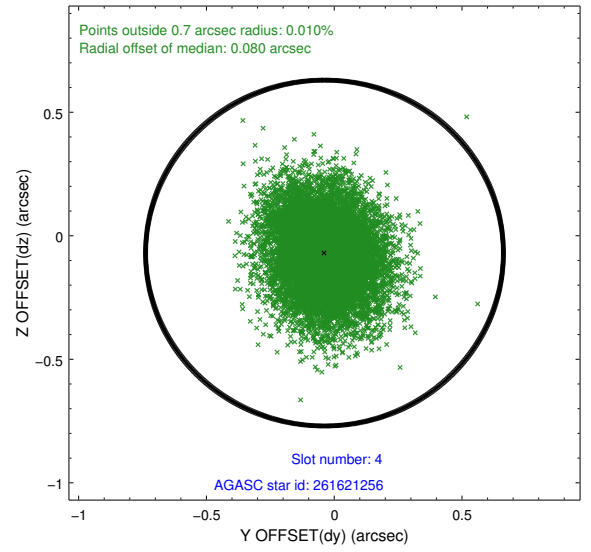
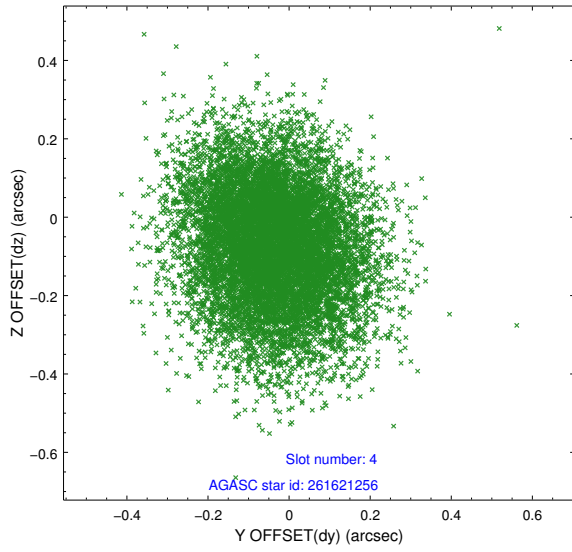
slot	status	id	mag	n_pts	med_dy	med_dz	dr1	dr2	ra	dec	mean_y	mean_z
0	FID	HRC-S-1	7.05	4925	0.100	-0.175	0.015	0.037	0.000000	0.000000	-1168.53	-462.26
1	FID	HRC-S-2	7.03	4925	0.162	-0.102	0.007	0.014	0.000000	0.000000	1230.98	-454.91
2	FID	HRC-S-3	7.04	4925	0.126	-0.025	0.016	0.039	0.000000	0.000000	-1170.97	567.34
3	GUIDE	261619776	8.80	9842	0.035	-0.184	0.087	0.144	198.654383	29.401174	1805.14	300.25
4	GUIDE	261621256	10.43	9835	-0.038	-0.070	0.192	0.312	198.855442	28.471997	-1050.23	2153.86
5	GUIDE	261621400	6.97	9849	-0.107	-0.082	0.072	0.115	198.901600	28.741982	-447.67	1377.67
6	GUIDE	261626376	9.69	9826	0.082	0.081	0.156	0.249	198.947288	29.347445	1031.31	-230.07
7	GUIDE	261629720	8.11	9845	0.030	0.254	0.078	0.126	199.236176	29.044452	-384.90	-136.93

2.4 Star Slots

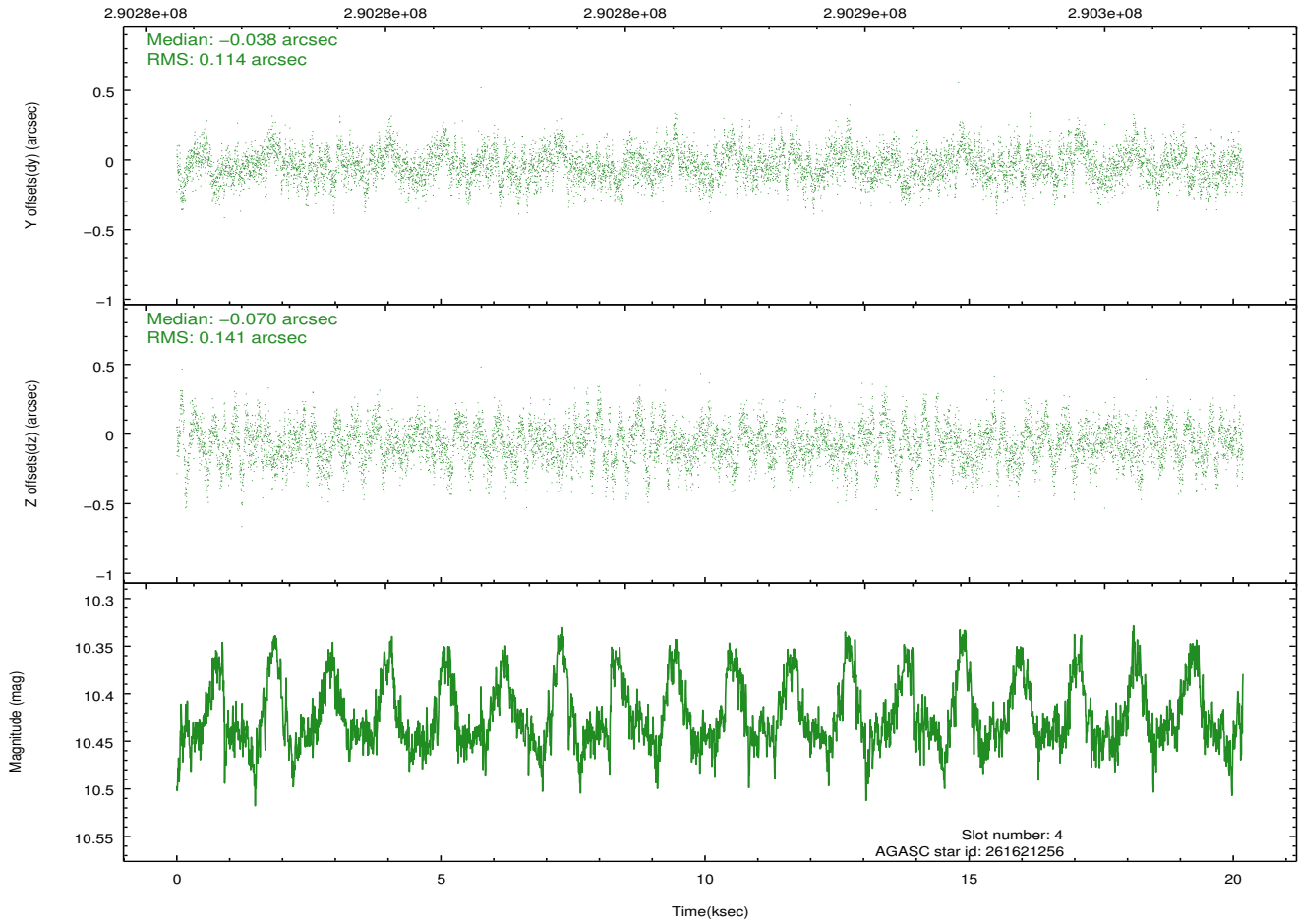
2.4.1 Slot 3



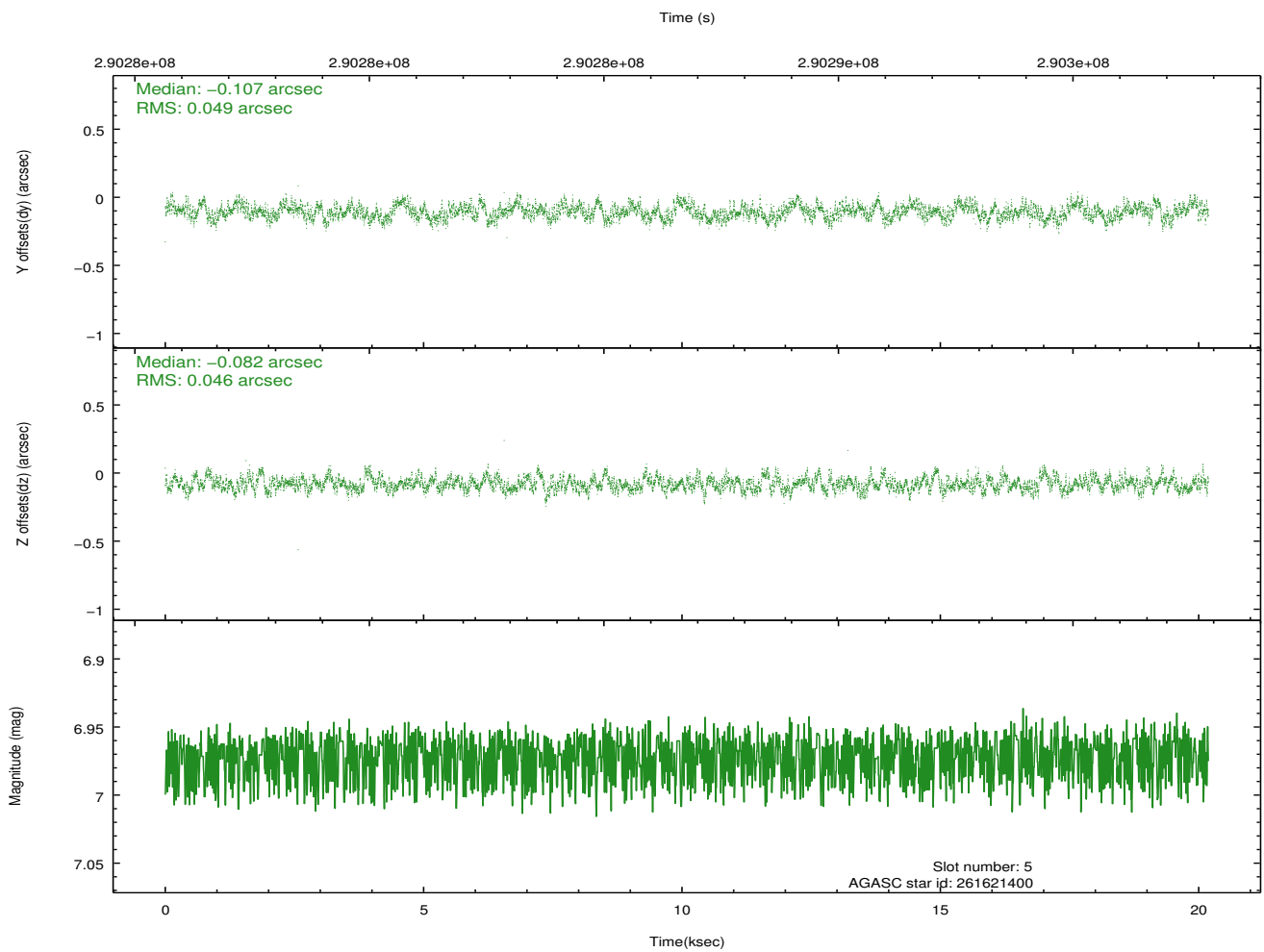
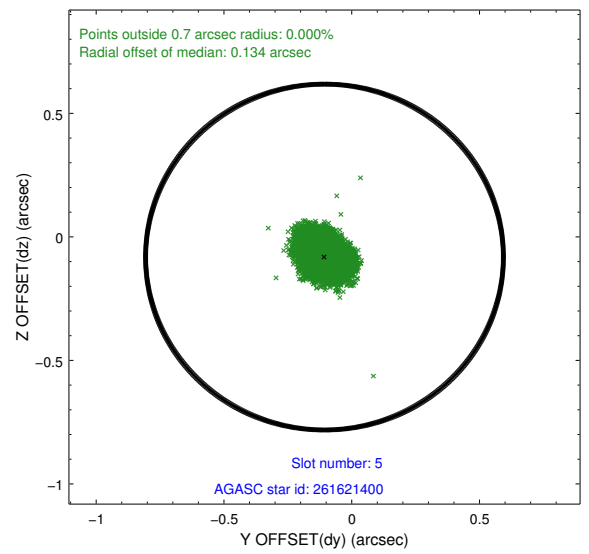
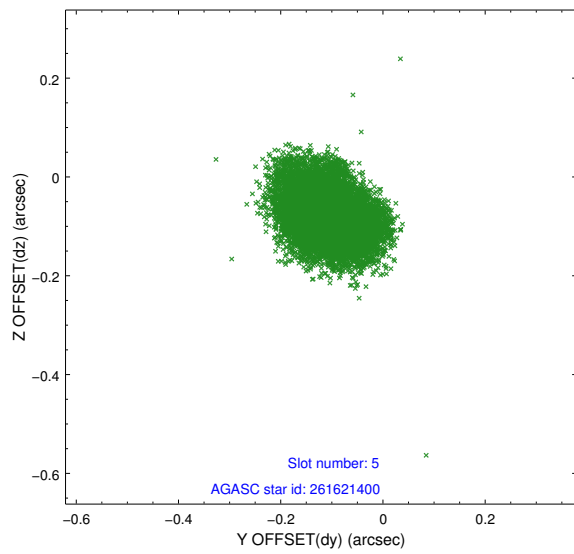
2.4.2 Slot 4



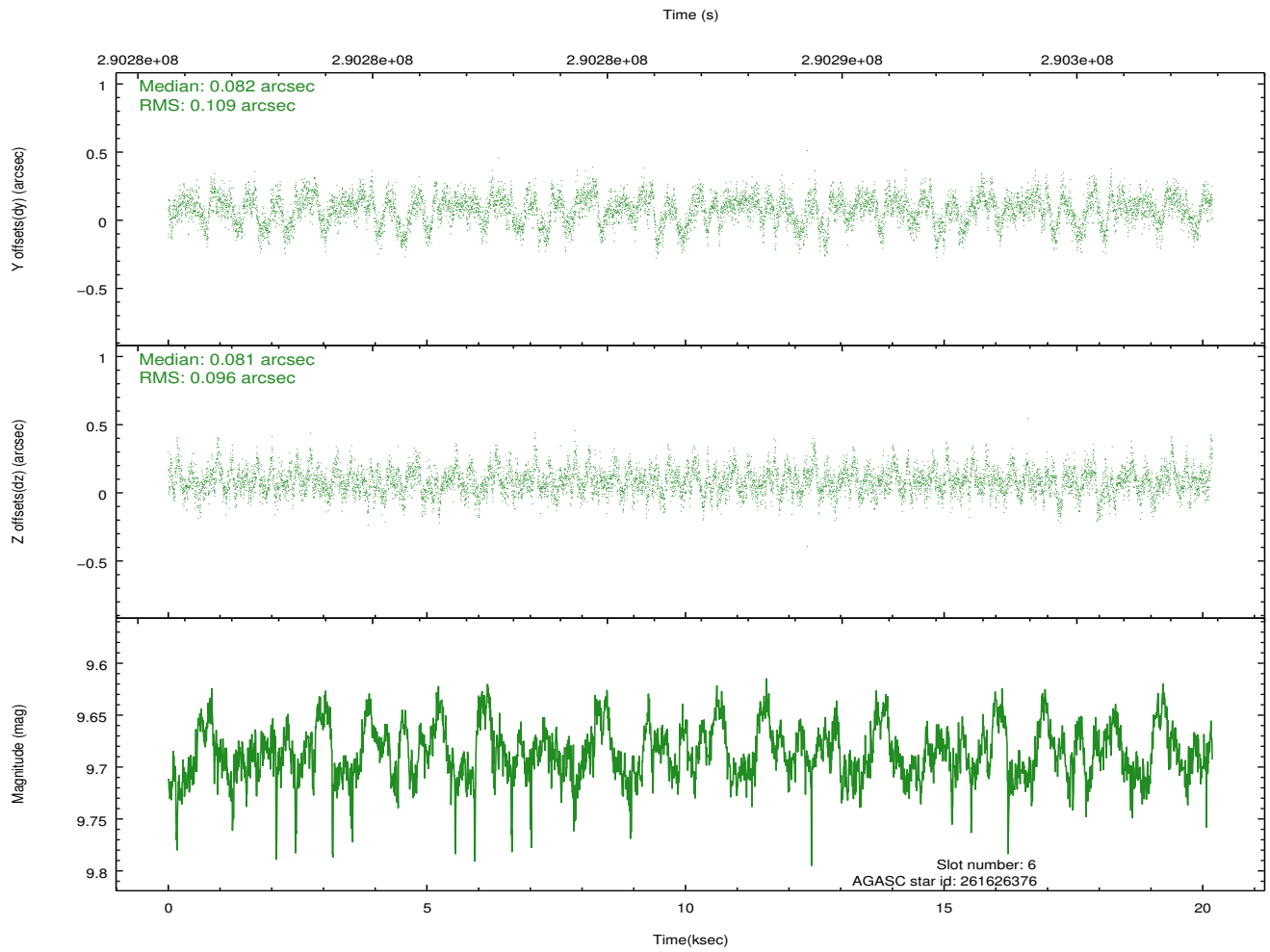
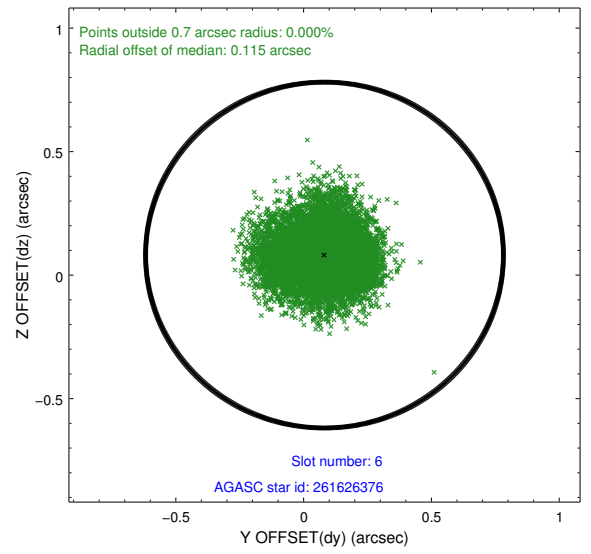
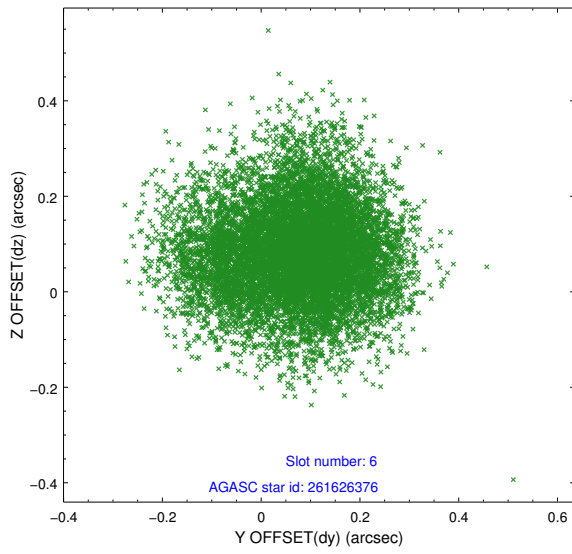
Time (s)



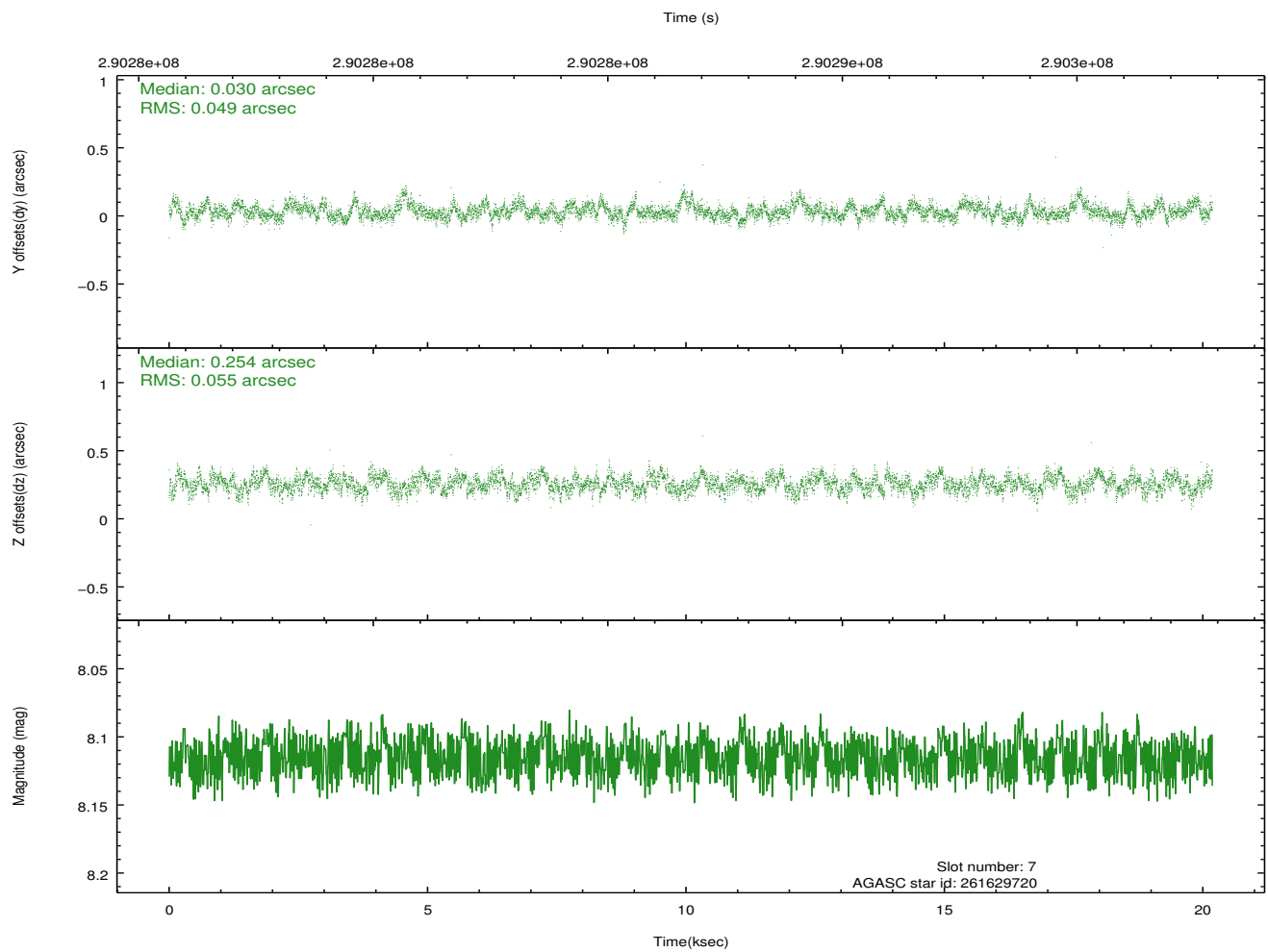
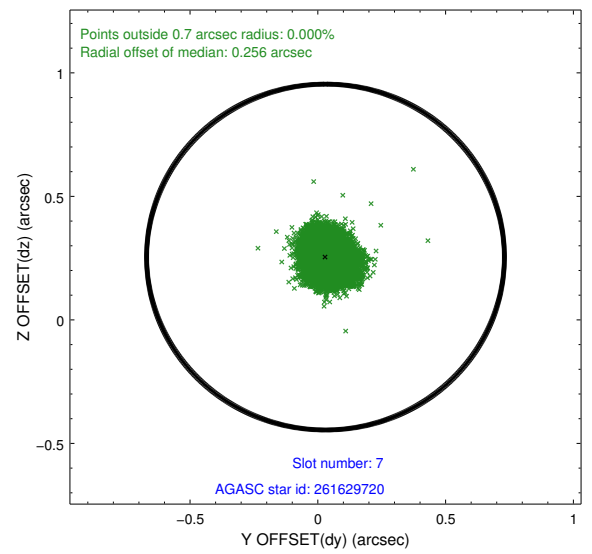
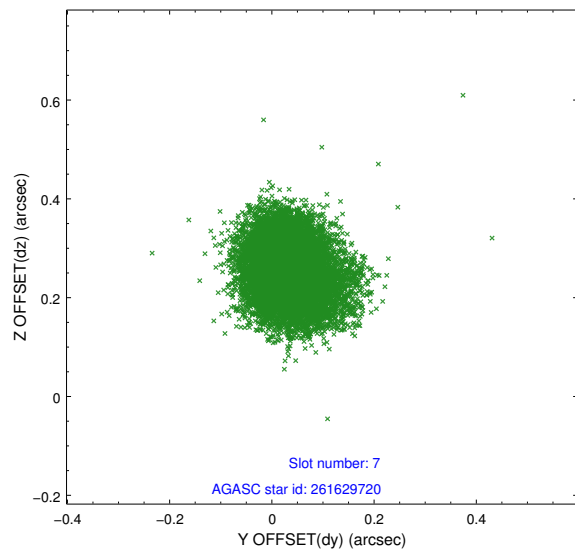
2.4.3 Slot 5



2.4.4 Slot 6

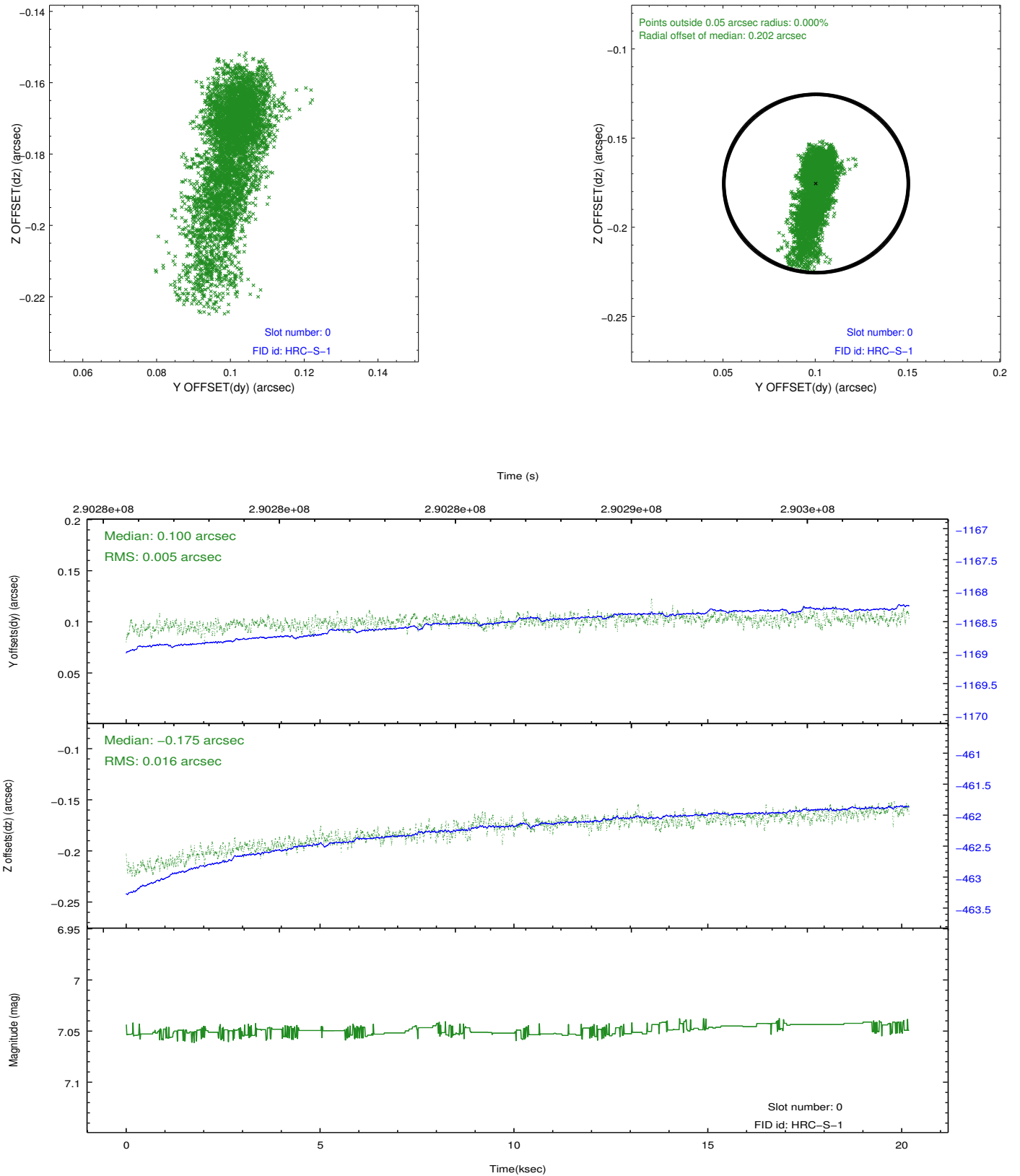


2.4.5 Slot 7

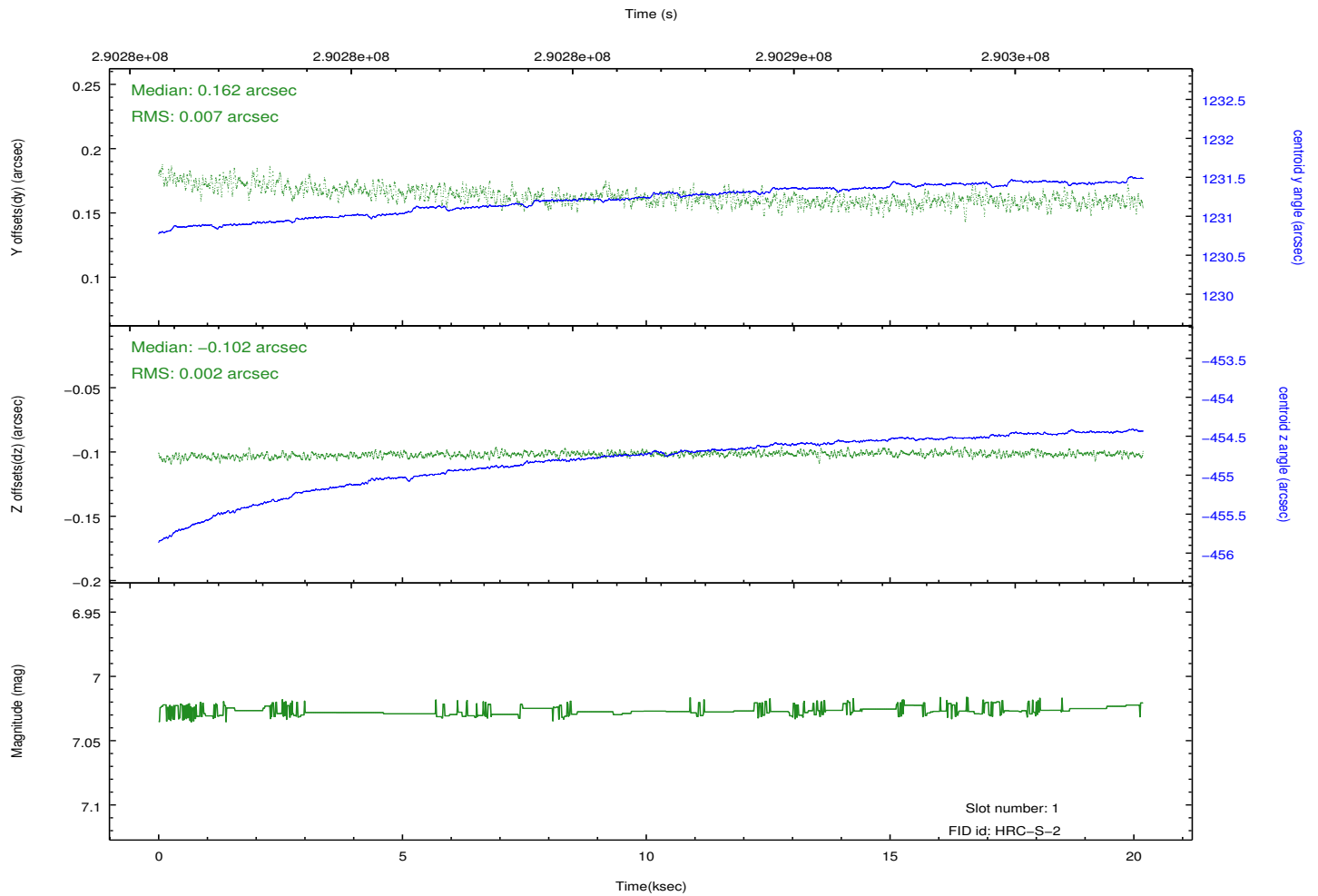
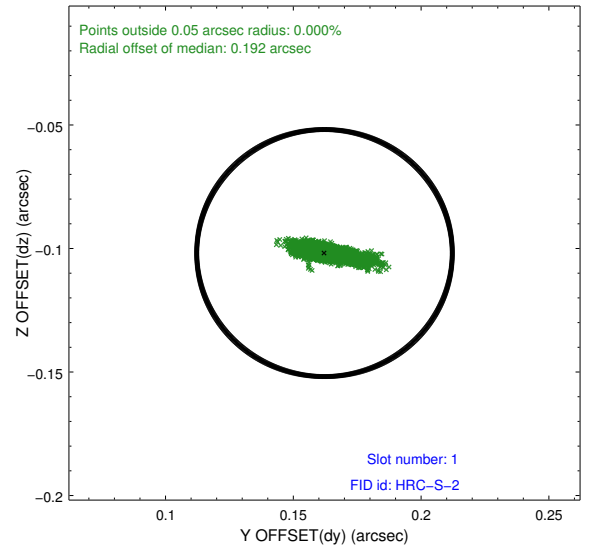
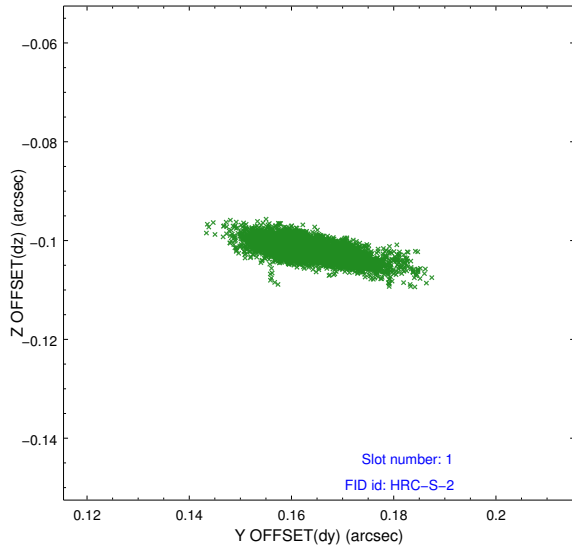


2.5 FID Slots

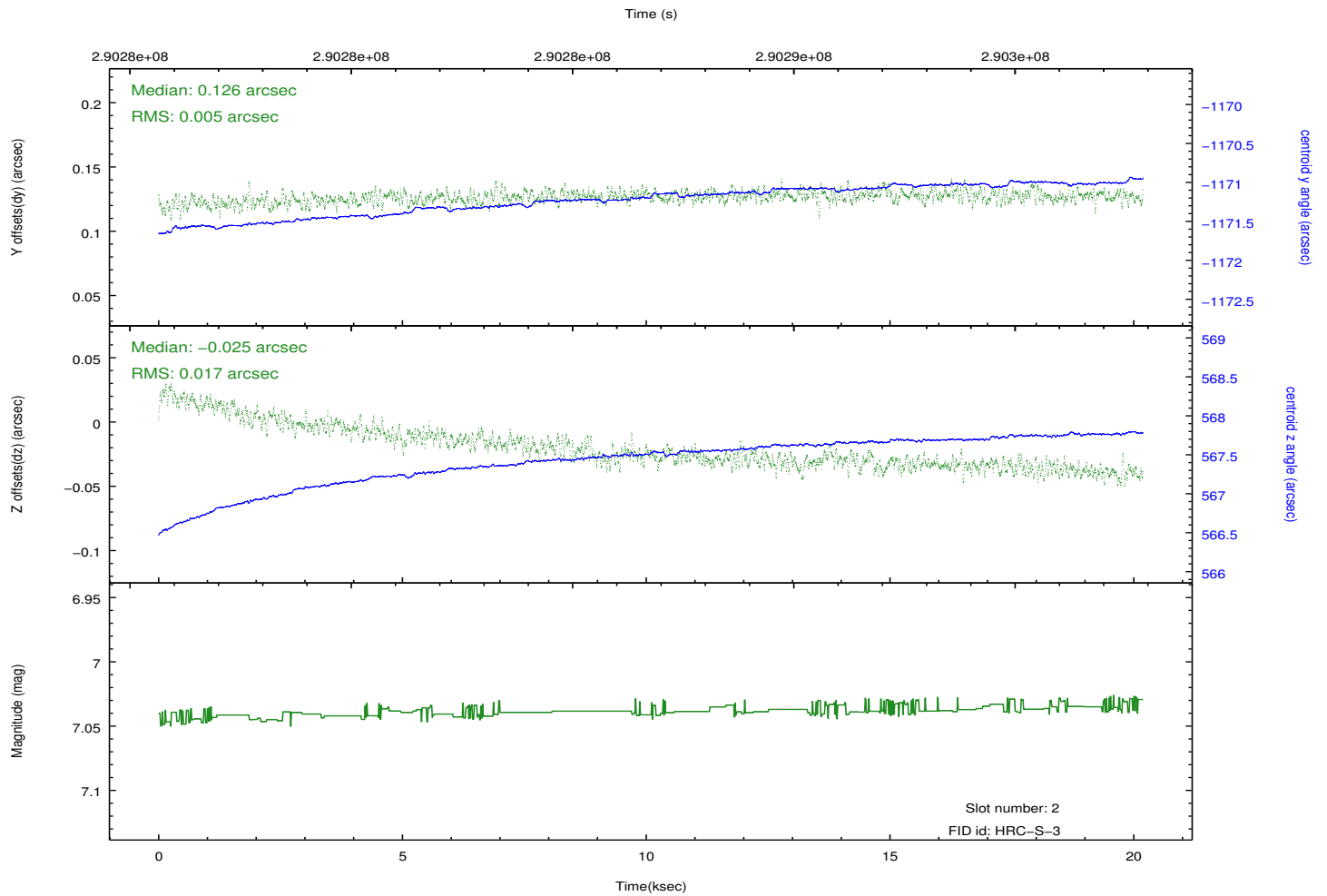
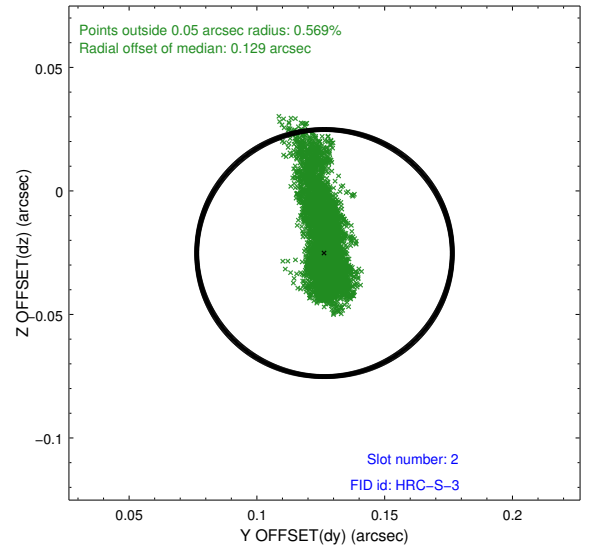
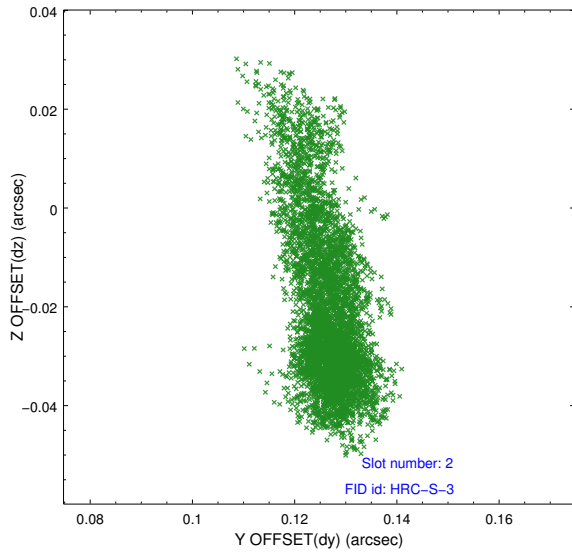
2.5.1 Slot 0



2.5.2 Slot 1

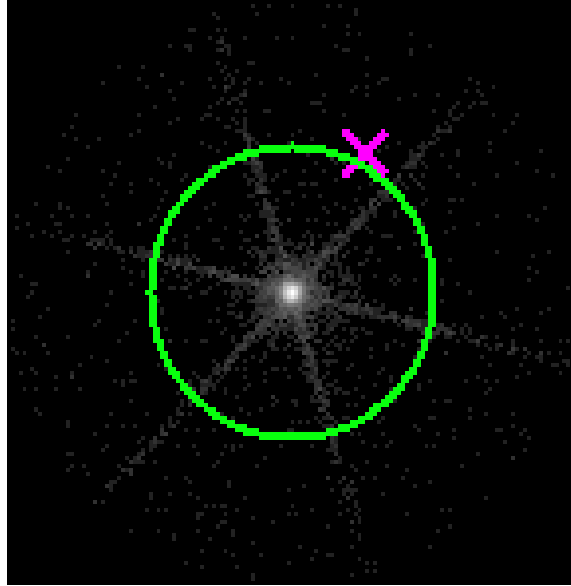


2.5.3 Slot 2

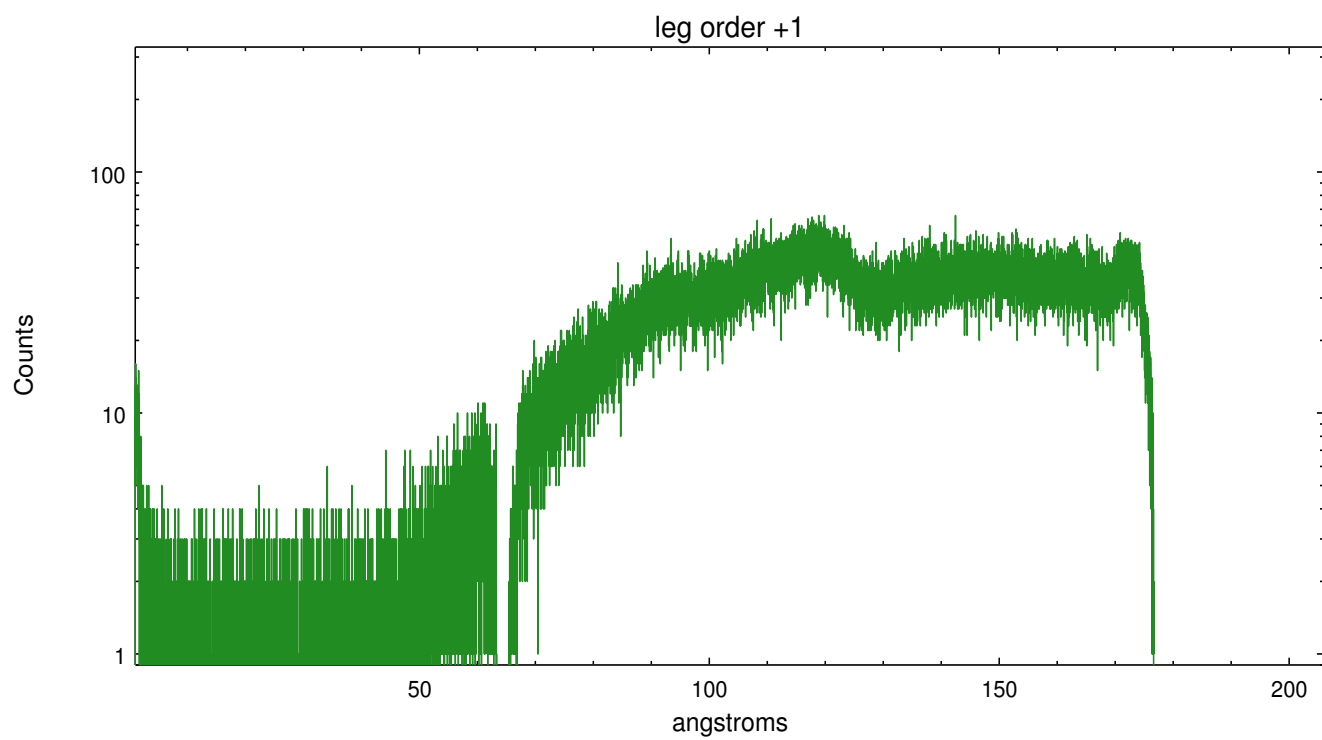
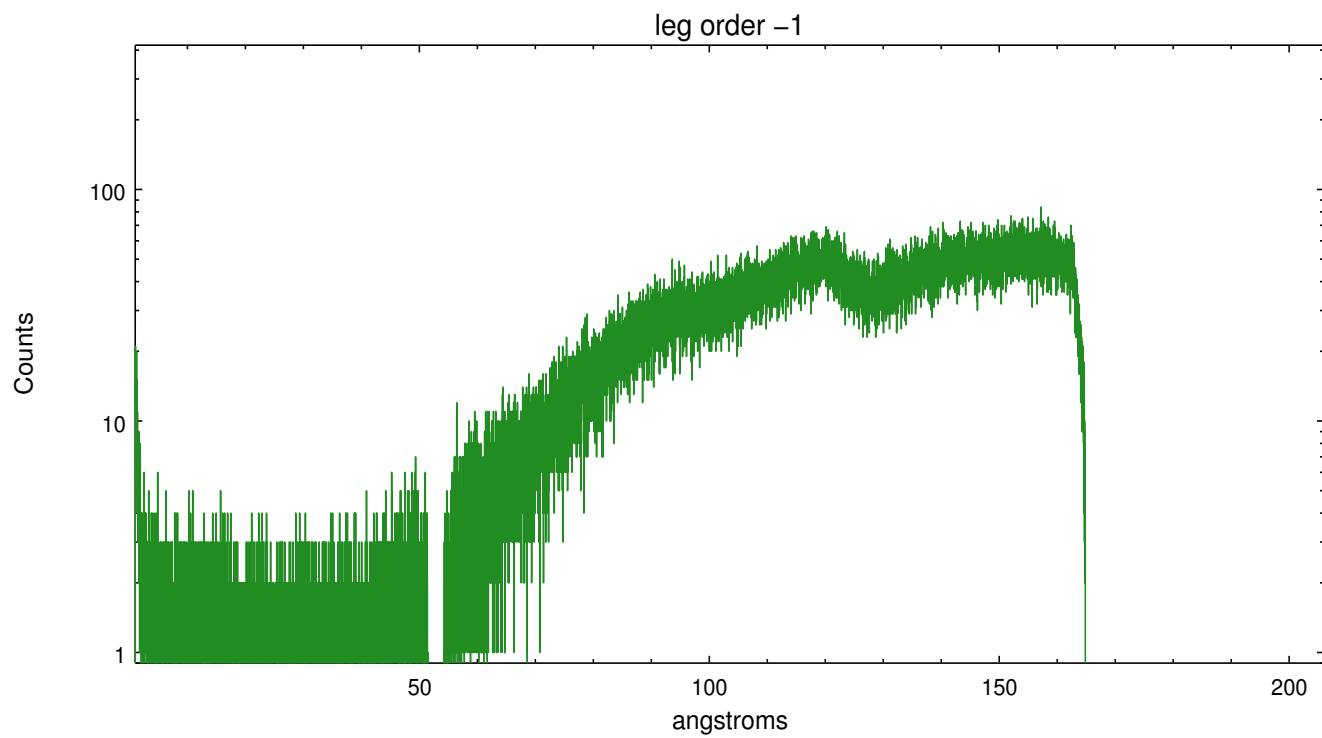


3 Gratings

3.1 LETG Arm



LETG Zero Order



A Summary

A.1 Status

V&V Scientist	Joy Nichols
V&V Date (YYYY-MM-DD)	2012.08.17
V&V Edition	1
V&V Disposition and Status	OK
V&V Charge Time	20.1876322

A.2 Comments