

V&V Reference Report

L2 ASCDS Version : 8.4.4

Observation 8374 - L2 Version 3
Chandra X-Ray Center

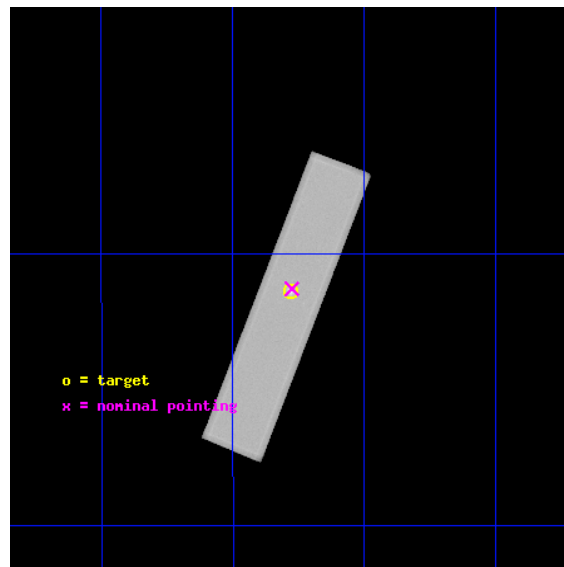
L2 Processing Date : Aug 11 2012

Contents

1	Front	2
2	OBI	3
2.1	OBI	3
2.1.1	Images	3
2.1.2	Parameters	4
2.1.3	Events	4
2.2	Compared Parameters	5
2.3	Aspect	6
2.4	Star Slots	9
2.4.1	Slot 3	9
2.4.2	Slot 4	10
2.4.3	Slot 5	11
2.4.4	Slot 6	12
2.4.5	Slot 7	13
2.5	FID Slots	14
2.5.1	Slot 0	14
2.5.2	Slot 1	15
2.5.3	Slot 2	16
A	Summary	17
A.1	Status	17
A.2	Comments	17

1 Front

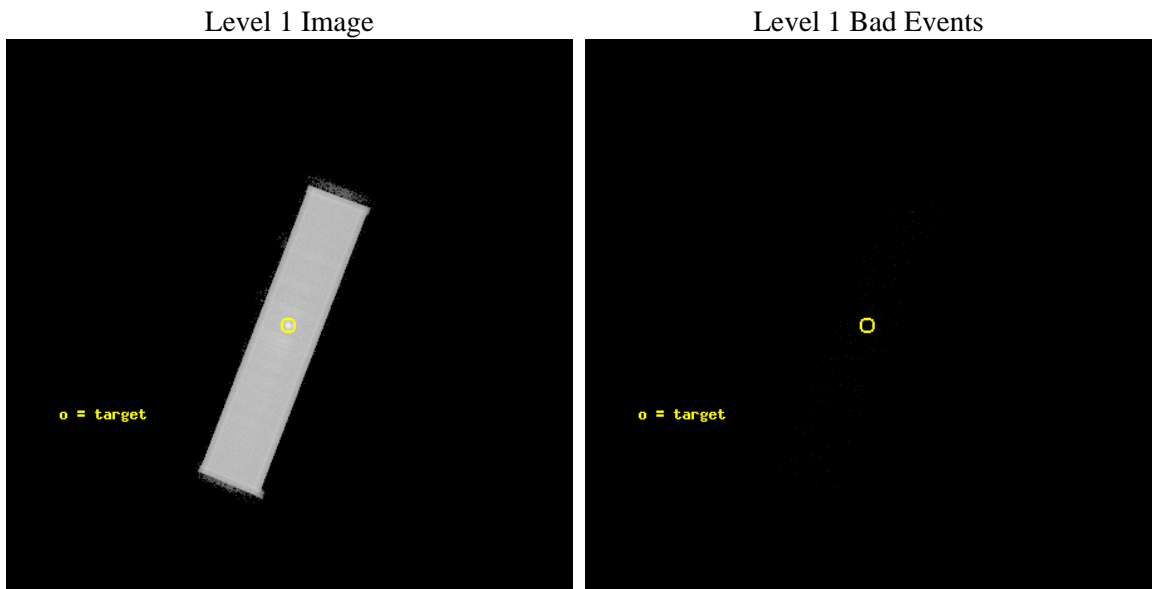
seq_num	590467	Sequence number
obs_id	8374	Observation id
title	AO8 Observations of the Standard Candles Cas A and G21.5-09	Propos
observer	Dr. CXC Calibration	Principal investigator
object	G21.5-09	Source name
ra_targ	278.389583	Observer's specified target RA [deg]
dec_targ	-10.568528	Observer's specified target Dec [deg]
ra_nom	278.38782373643	Nominal RA [deg]
dec_nom	-10.564016230608	Nominal Dec [deg]
roll_nom	111.17542395178	Nominal Roll [deg]
revision	3	Processing version of data
ontime	21564.207280159	[s]
livetime	21391.602607874	Ontime multiplied by DTCOR
l2events	1186661	Number of level 2 events



2 OBI

2.1 OBI

2.1.1 Images



2.1.2 Parameters

obi_num	0	Obi number	sched_exp_time	21010.304000	[s] Scheduled observation exposure time
ascdsver	8.4.5	Processing system revision	ontime	21564.207280159	[s]
caldsver	4.5.1.1	 	l1events	1447372	Number of level 1 events
date	2012-08-11T21:17:35	Date and time of file creation			
revision	3	Processing version of data			

2.1.3 Events

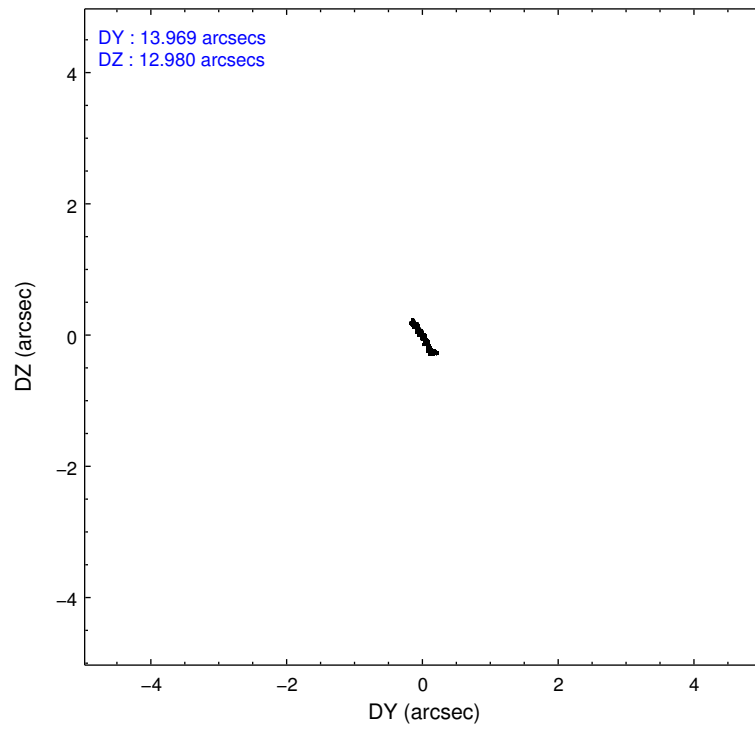
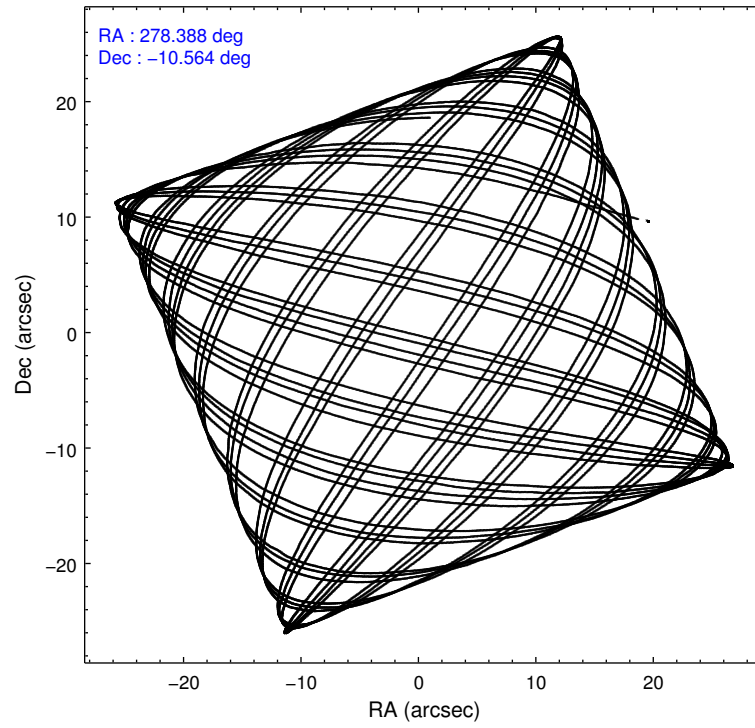
Level 1 Events

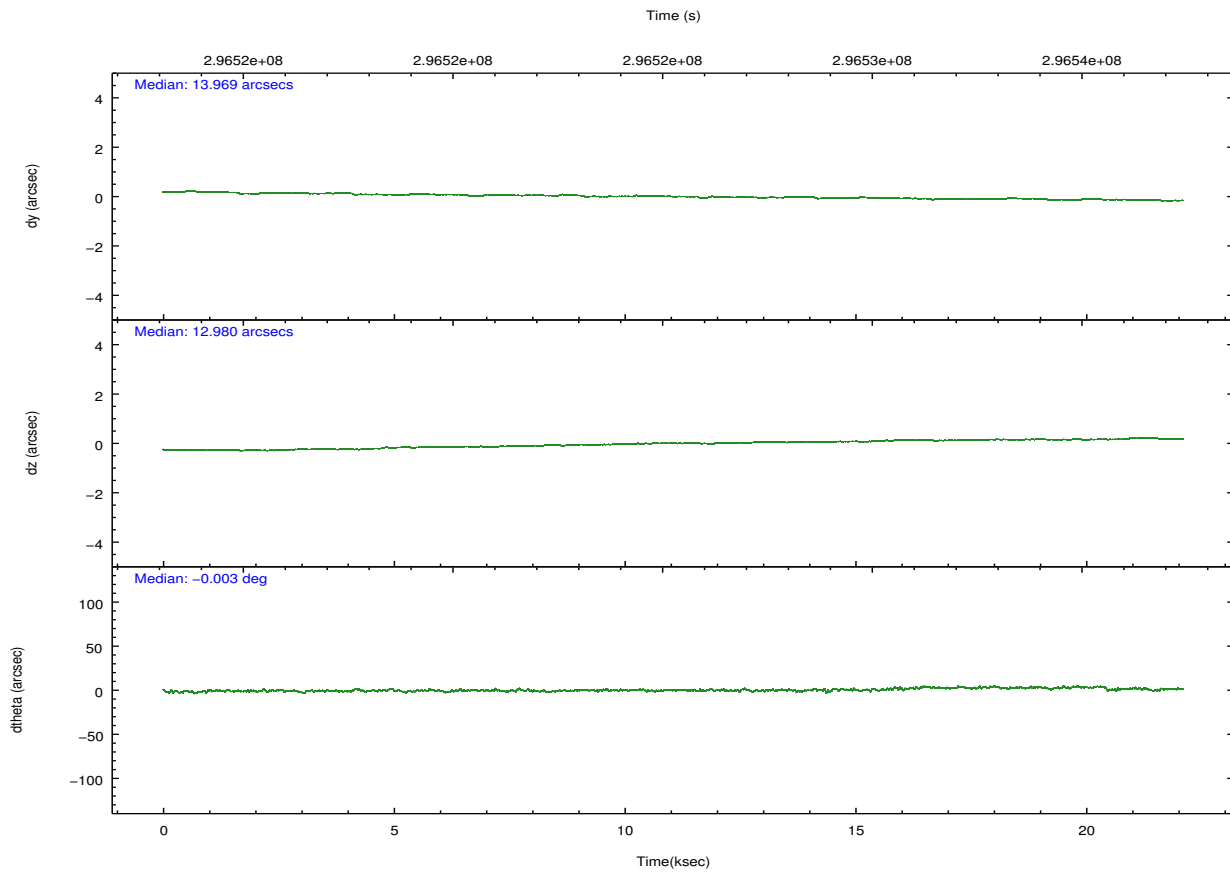
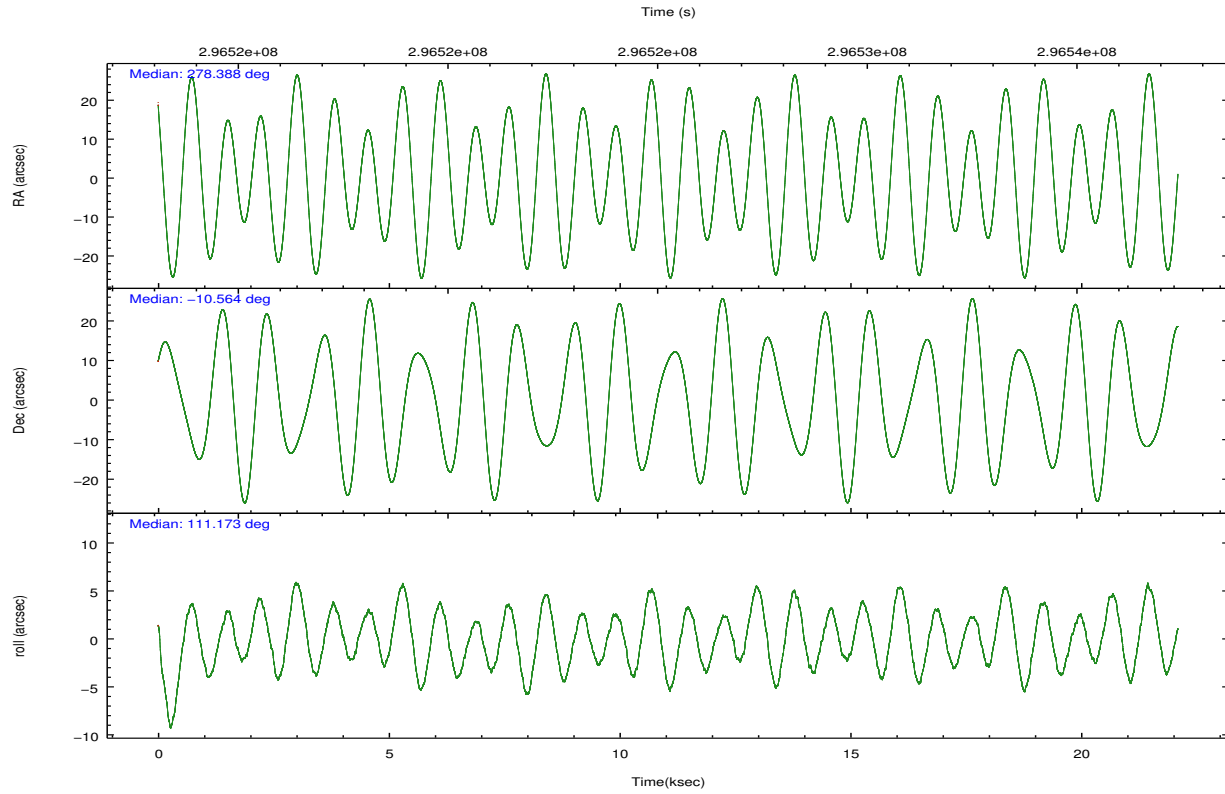
	segment 1	segment 2	segment 3
level 1 events	0	1447372	0
rejected events	0	2519	0
rejected %	0%	0%	0%

2.2 Compared Parameters

Parameter	Planned	Actual	Parameter	Planned	Actual
Instrument	HRC	HRC	Obspar format version number	7	7
Detector	HRC-S	HRC-S	Obspar file type	PREDICTED	ACTUAL
Grating	NONE	NONE	Obspar update status	NONE	UPDATED
Data mode	OBSERVING	OBSERVING			
Observation mode	POINTING	POINTING			
[deg] Pointing RA	278.411535	278.3878237364251			
[deg] Pointing Dec	-10.580921	-10.56401623060755			
[deg] Pointing Roll	111.112434	111.1754239517821			
[s] Window start time (MET)	286675265.184000	286675265.184000			
[s] Window stop time (MET)	296956865.184000	296956865.184000			
[mm] SIM focus pos	-1.533336	-1.526339935833849			
[mm] SIM defocus	7.710433287538843e-07	0.006996703570447904			
[mm] SIM translation stage pos	250.455976	250.466033080201			
[mm] SIM translation stage offset	0	-0.01005468664627074			
[s] Observation start time (MET)	296514381.184000	296514008.76305			
Observation start date	2007-05-25T21:05:16	2007-05-25T21:00:08			
[s] Observation end time (MET)	296535392.184000	296537789.78918			
Observation end date	2007-05-26T02:55:27	2007-05-26T03:36:29			

2.3 Aspect



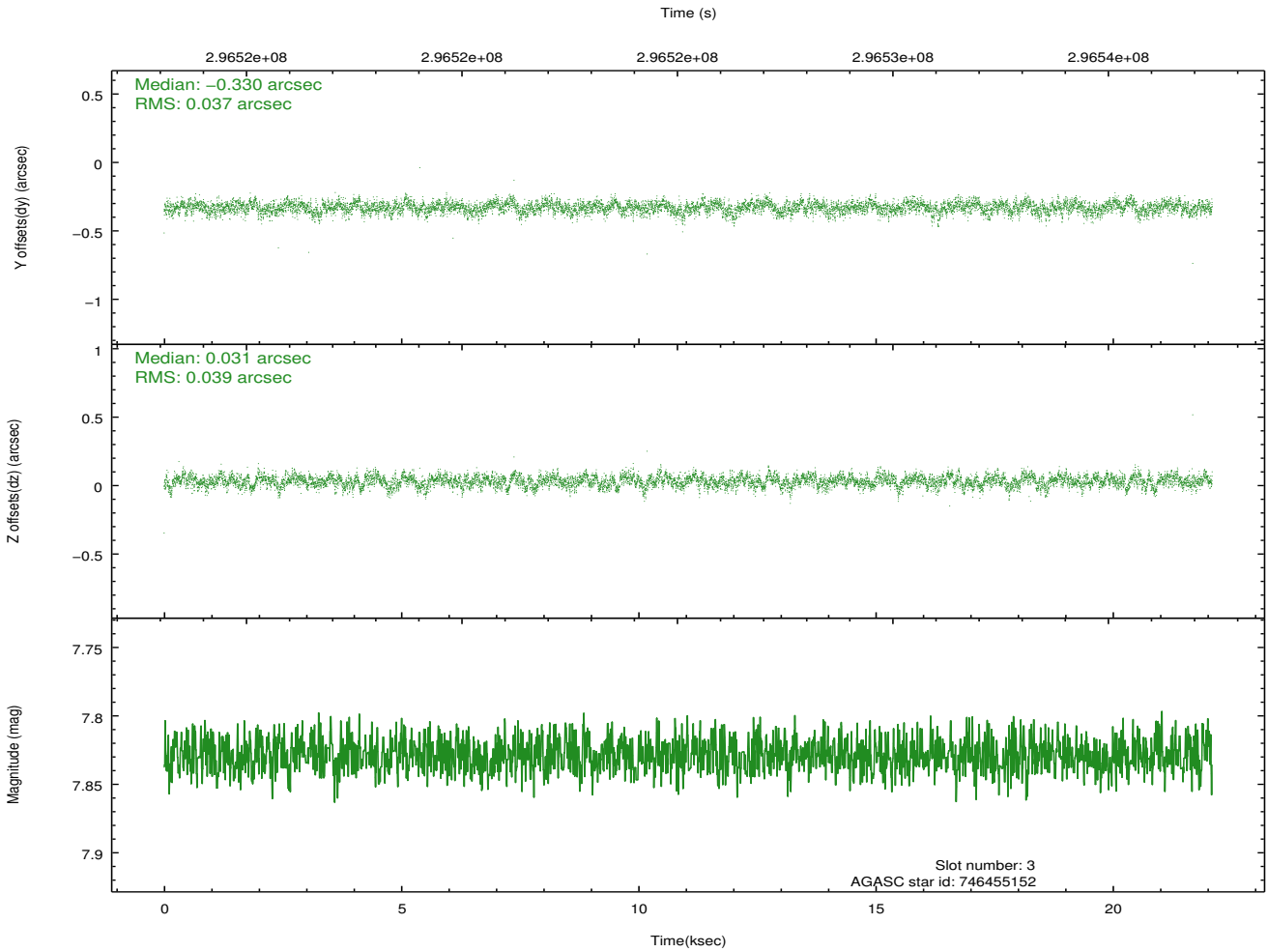
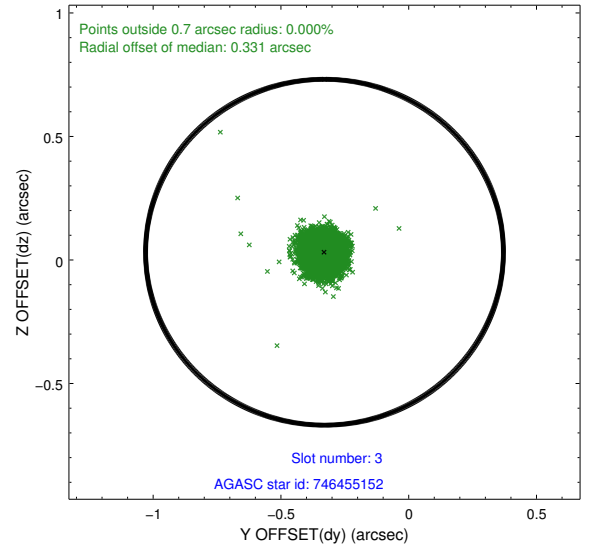
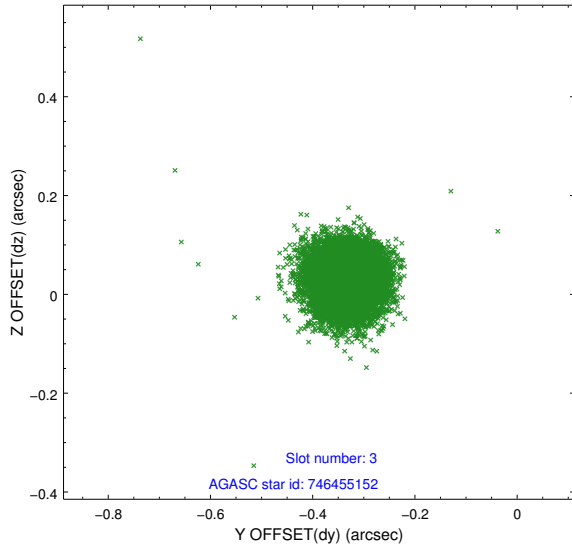


Slot Statistics

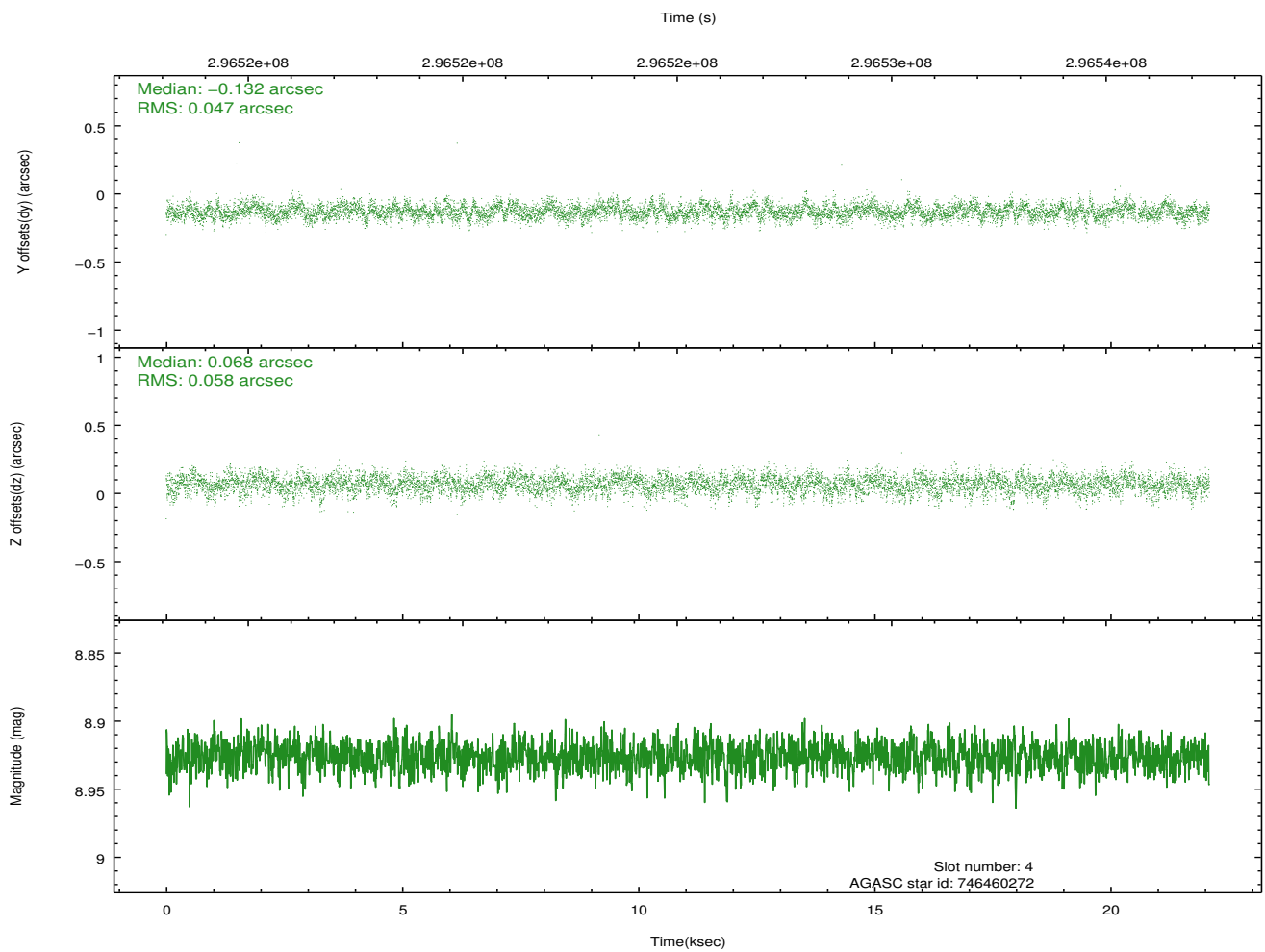
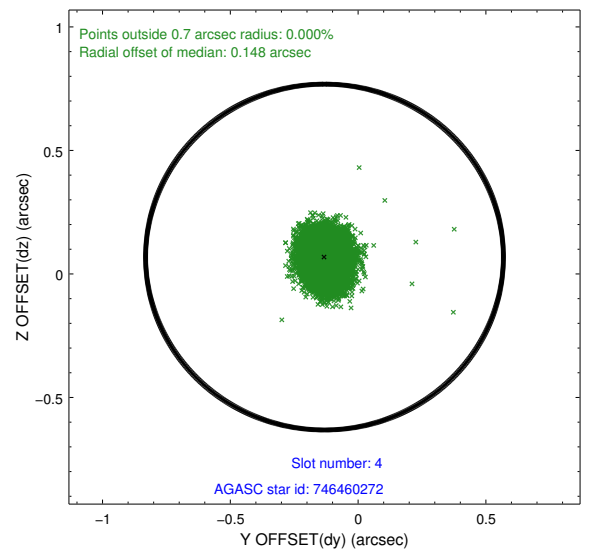
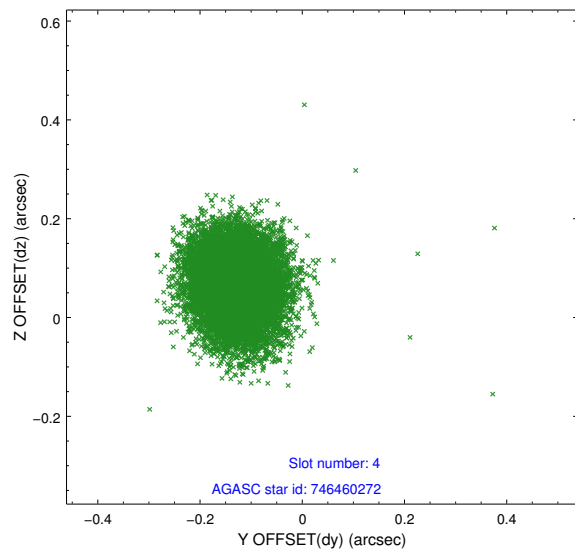
slot	status	id	mag	n_pts	med_dy	med_dz	dr1	dr2	ra	dec	mean_y	mean_z
0	FID	HRC-S-2	6.97	5389	0.129	-0.073	0.012	0.028	0.000000	0.000000	1231.35	-454.31
1	FID	HRC-S-3	6.99	5389	0.057	-0.101	0.007	0.013	0.000000	0.000000	-1170.85	567.77
2	FID	HRC-S-4	6.93	5389	0.220	-0.122	0.012	0.030	0.000000	0.000000	1229.82	570.46
3	GUIDE	746455152	7.83	10775	-0.330	0.031	0.056	0.092	278.447893	-9.976732	1982.57	-903.54
4	GUIDE	746460272	8.93	10748	-0.132	0.068	0.078	0.128	278.847488	-10.152127	882.94	-1996.73
5	GUIDE	746462392	8.53	10777	0.119	-0.014	0.082	0.128	279.038421	-10.890715	-1841.99	-1665.45
6	GUIDE	746462456	8.40	10775	0.176	-0.125	0.080	0.129	278.652171	-10.530173	-137.42	-860.25
7	GUIDE	746462680	9.03	10767	0.163	0.041	0.075	0.123	278.660755	-10.782756	-995.25	-560.34

2.4 Star Slots

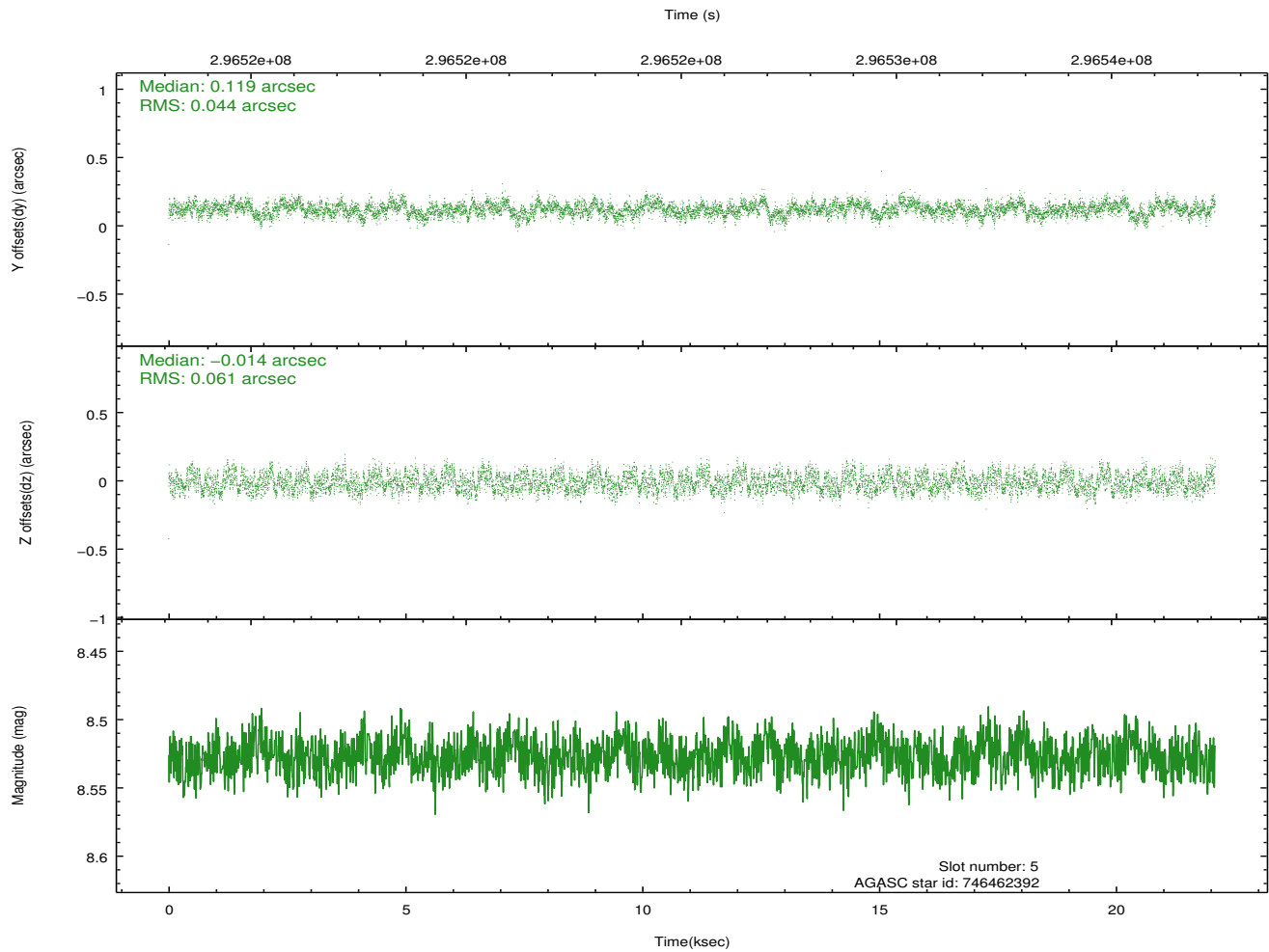
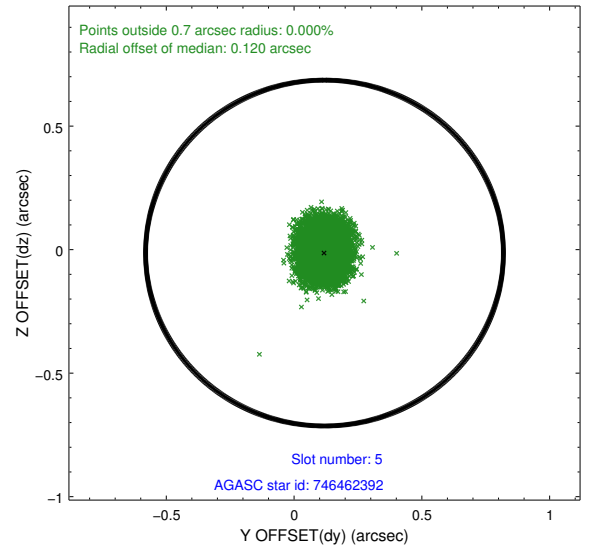
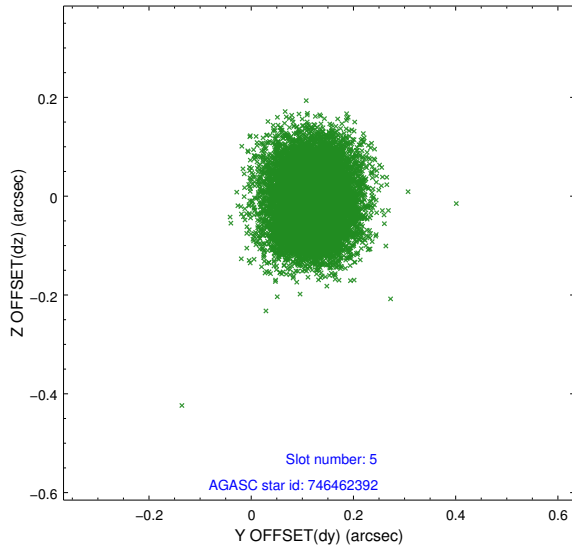
2.4.1 Slot 3



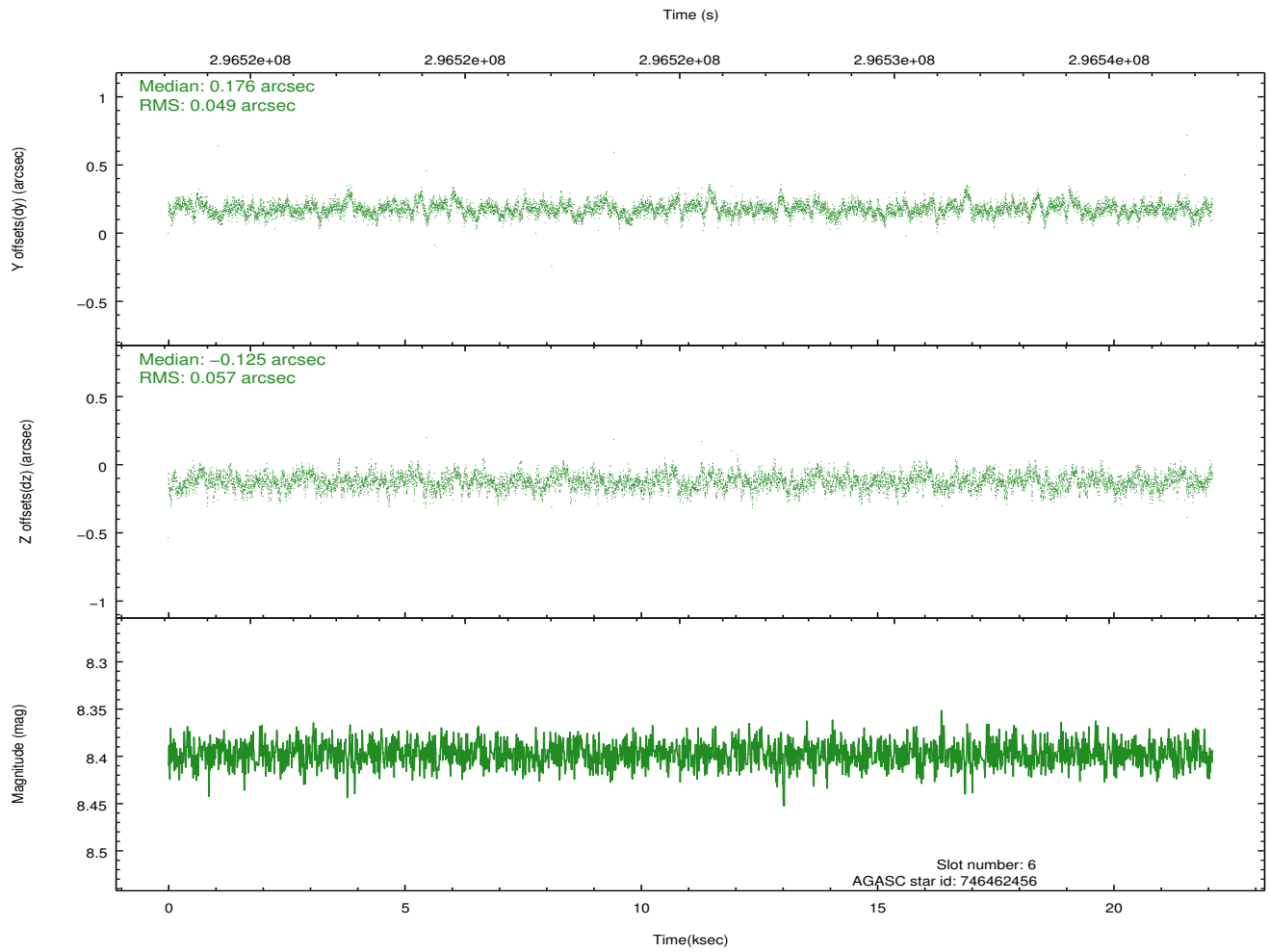
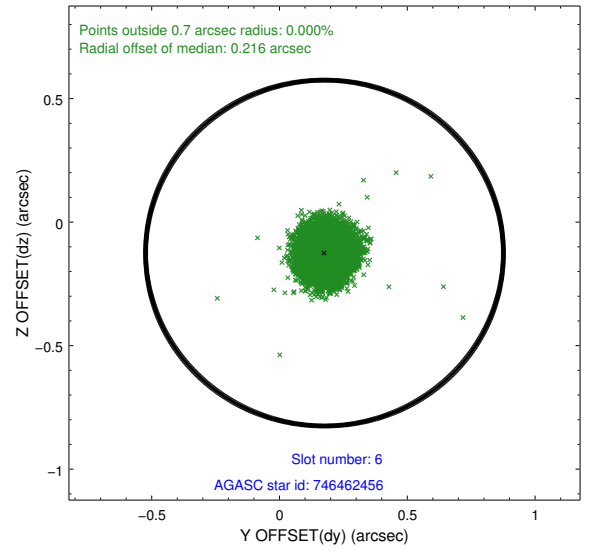
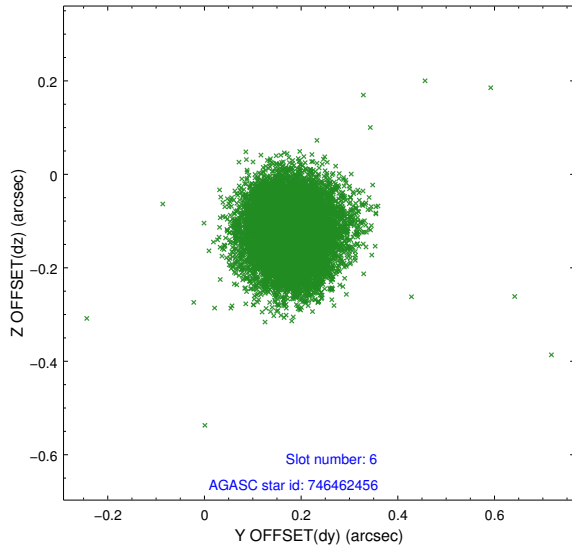
2.4.2 Slot 4



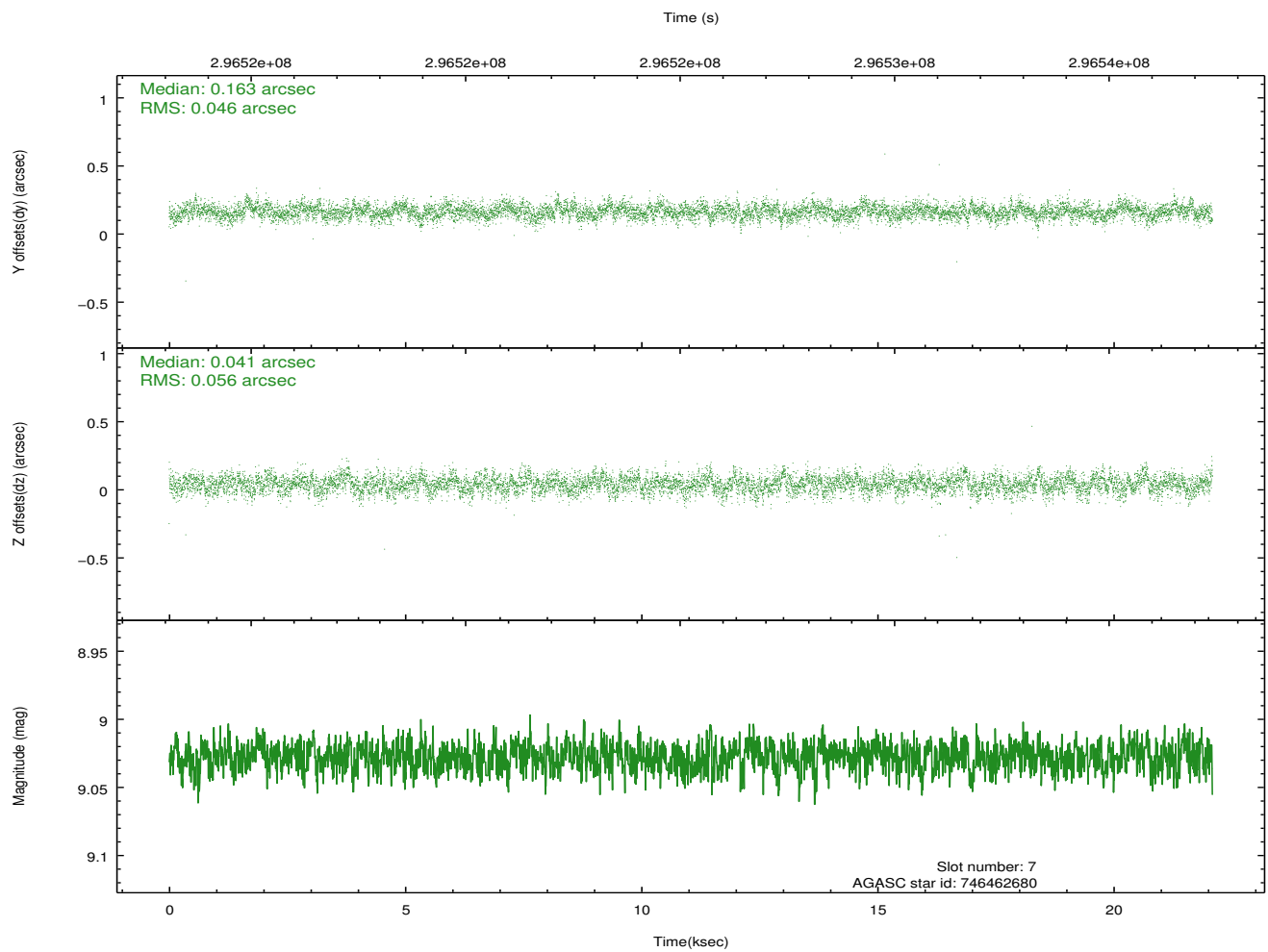
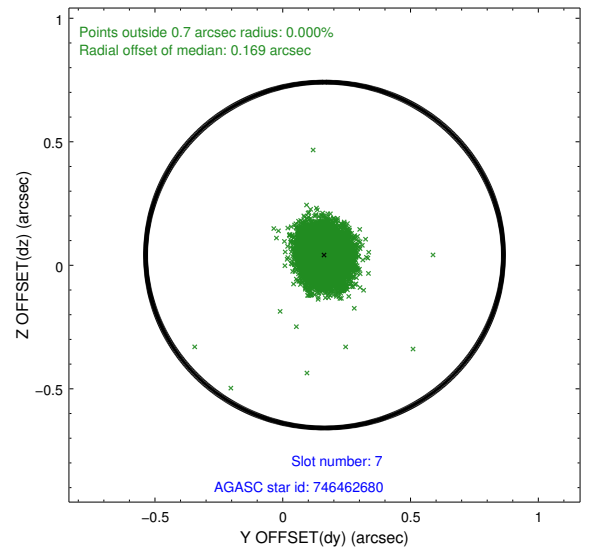
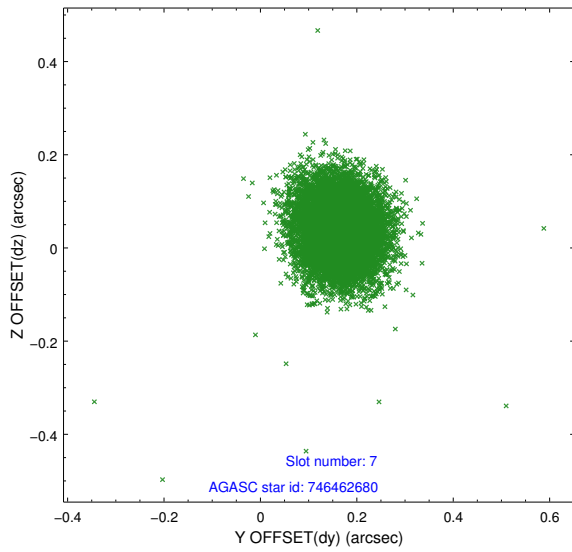
2.4.3 Slot 5



2.4.4 Slot 6

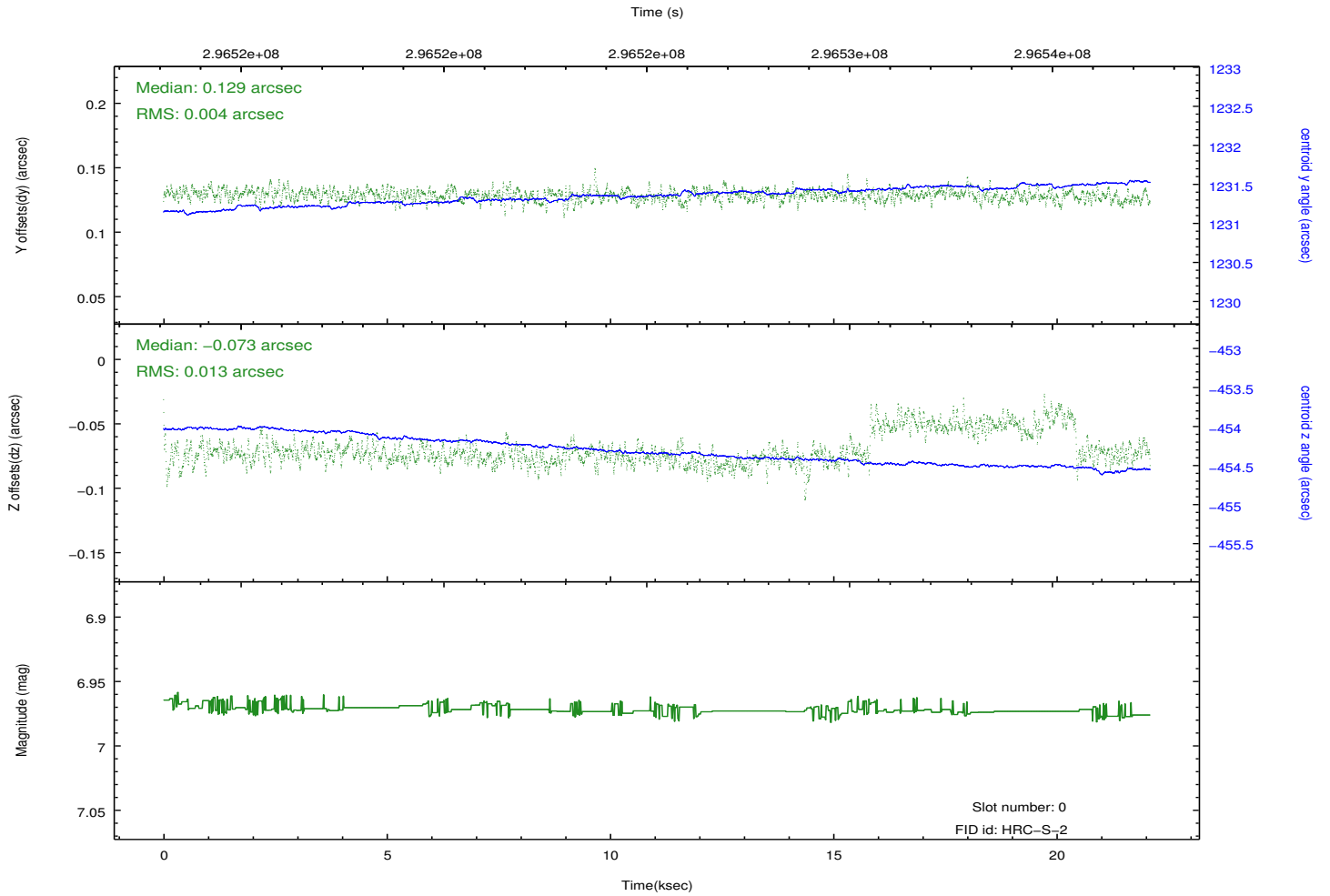
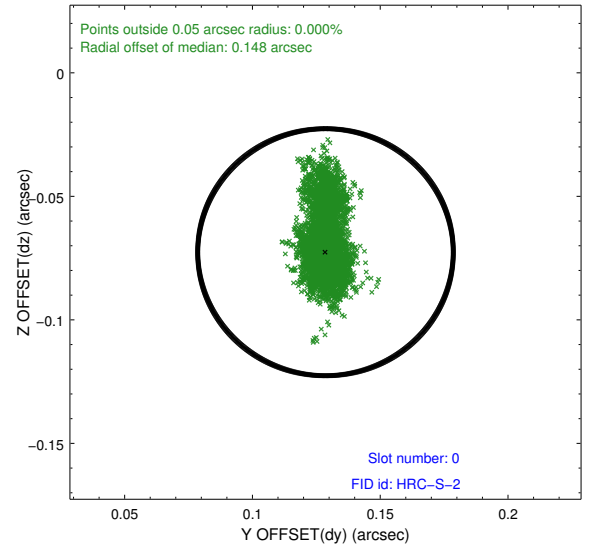
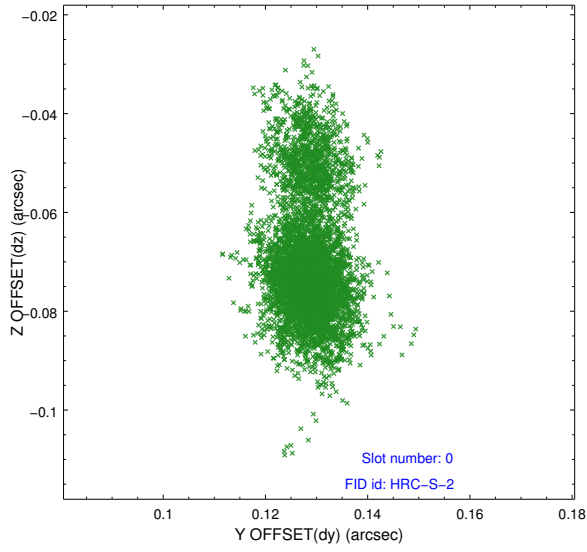


2.4.5 Slot 7

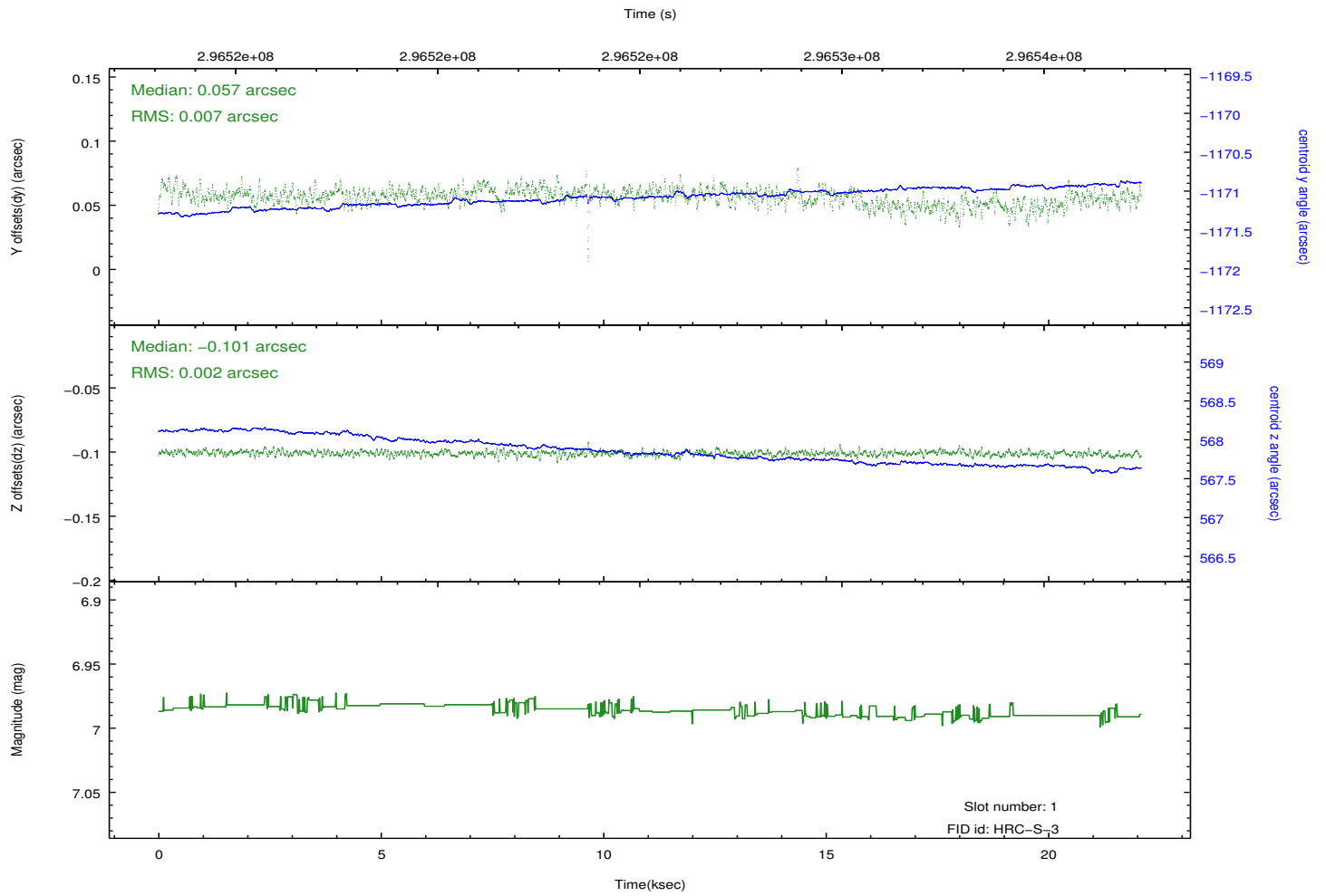
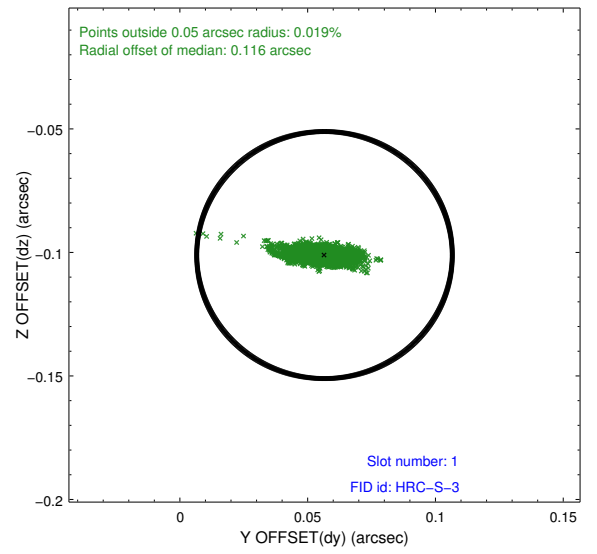
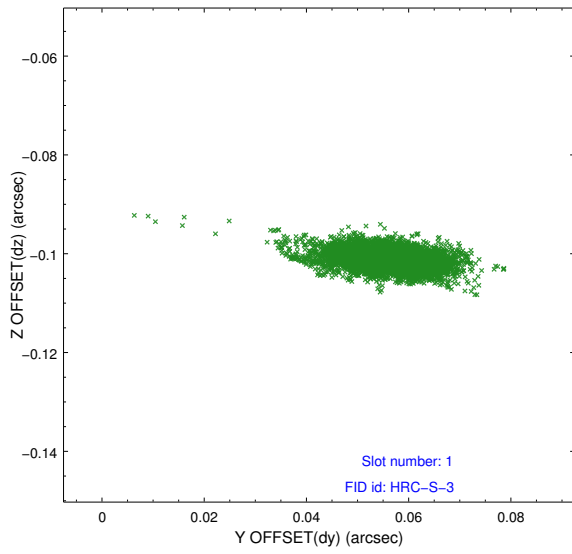


2.5 FID Slots

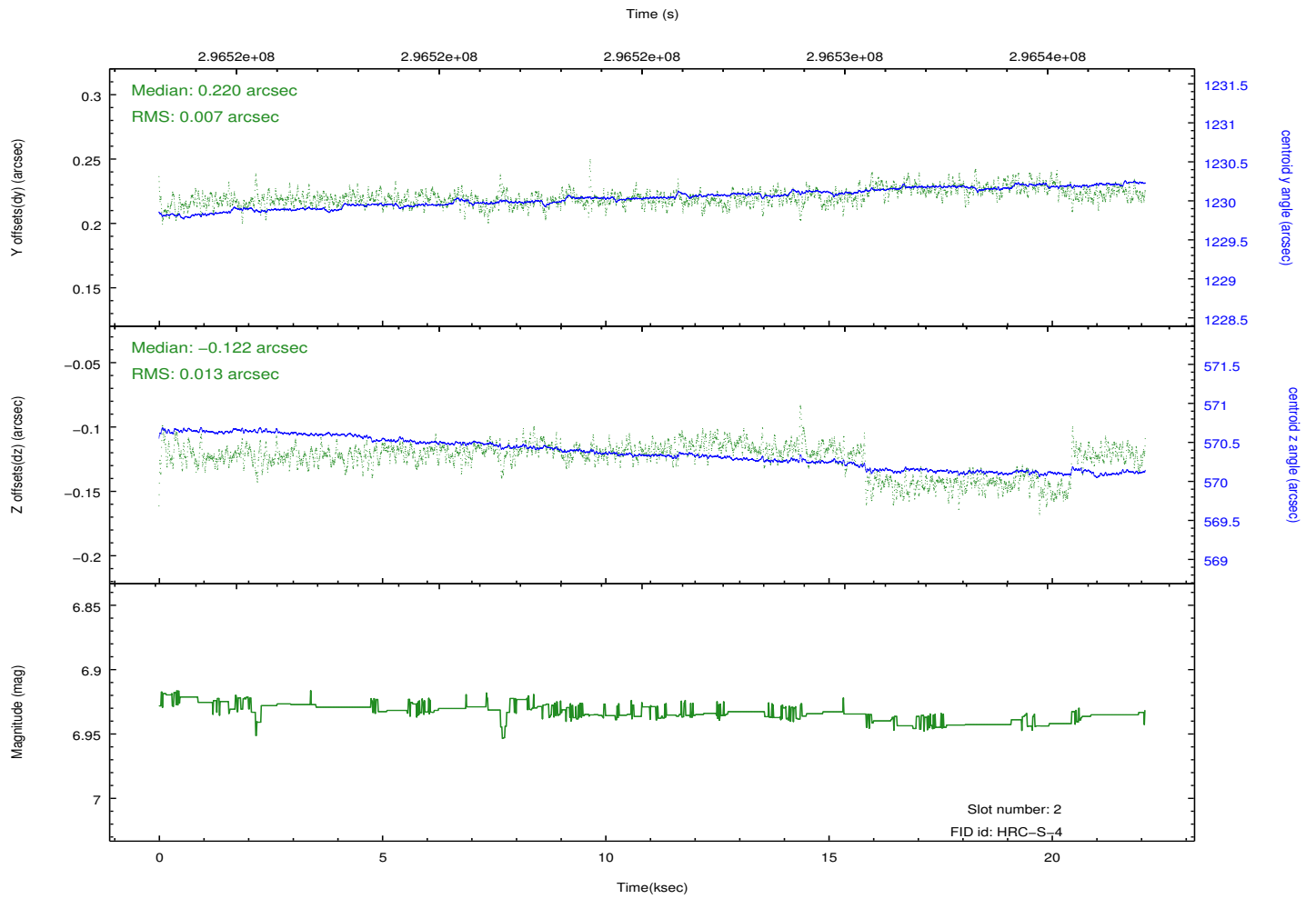
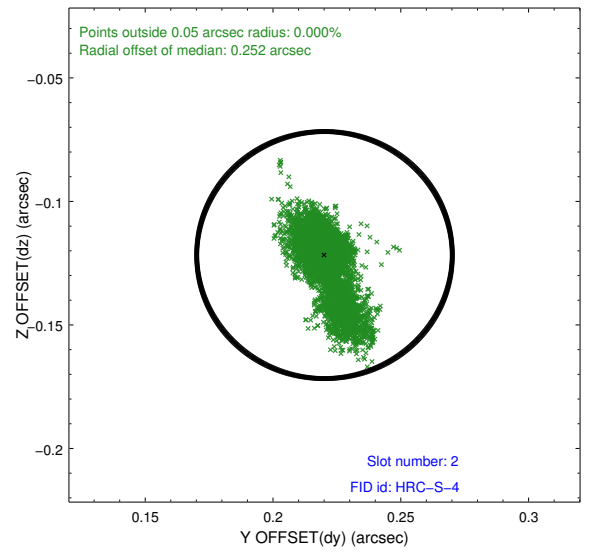
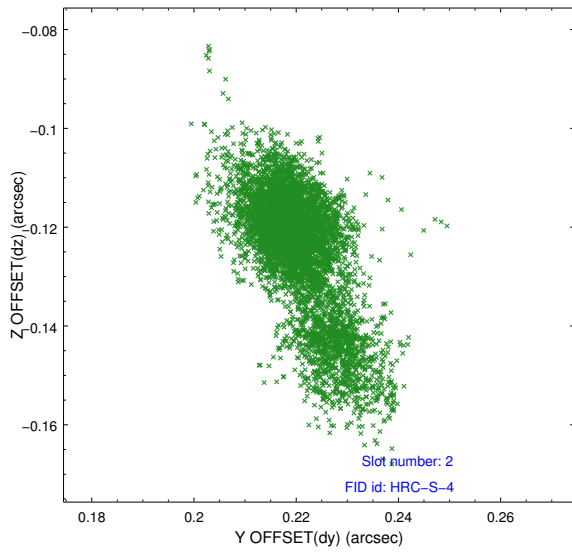
2.5.1 Slot 0



2.5.2 Slot 1



2.5.3 Slot 2



A Summary

A.1 Status

V&V Scientist	Jen Lauer
V&V Date (YYYY-MM-DD)	2012.08.15
V&V Edition	1
V&V Disposition and Status	OK
V&V Charge Time	21.5642072

A.2 Comments

Window constraint met.